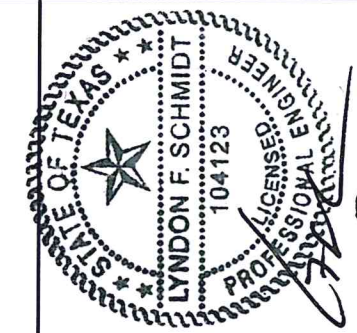


plastpro

5200 W. CENTURY BLVD.
LOS ANGELES, CA 90045

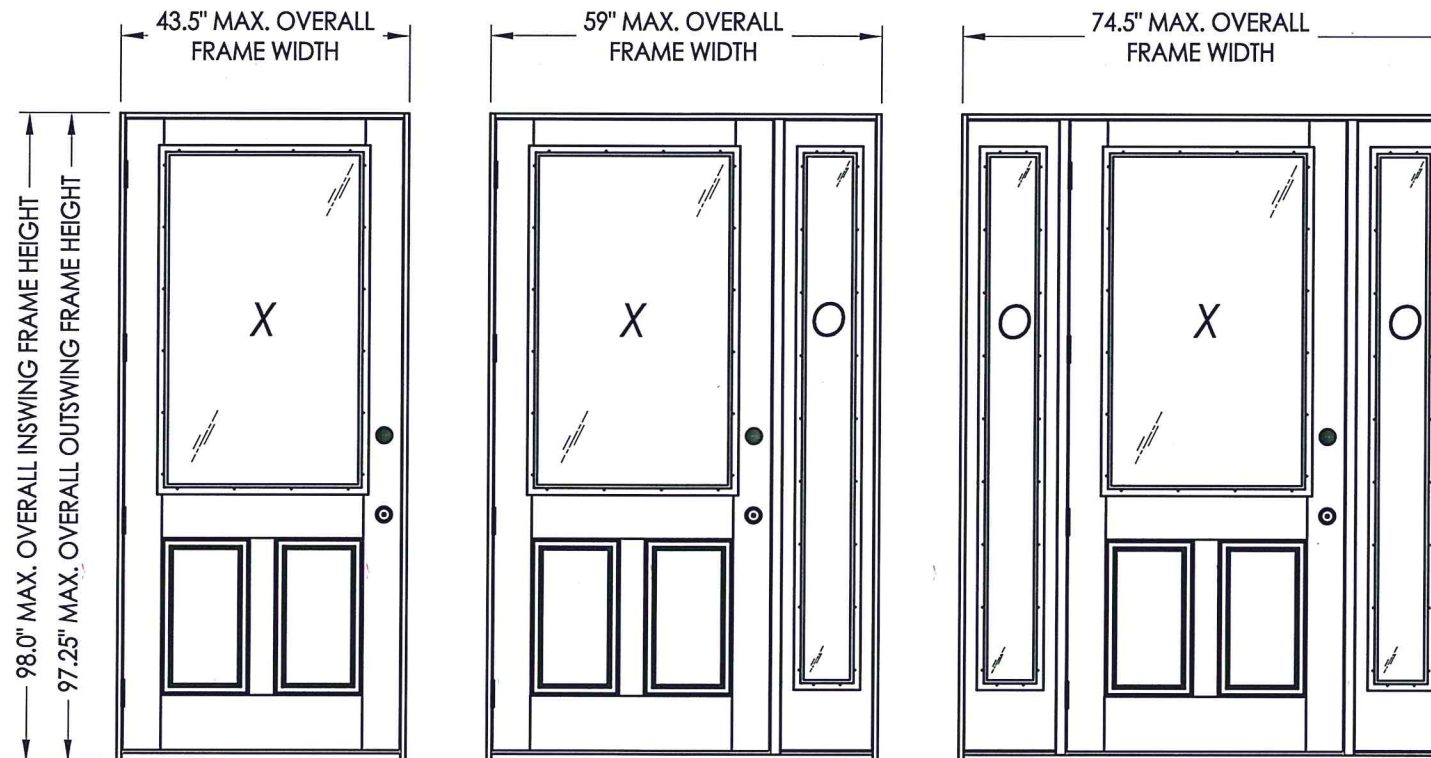
Mahogany / Rustic Series Fiberglass Door INSWING / OUTSWING "NON-IMPACT"



Documents Prepared By: Lyndon F. Schmidt, P.E.
TEXAS P.E. #104123

RW BUILDING CONSULTANTS, INC.
P.O. Box 230 Valrico FL, 33595
Phone No.: 813.659.9197

TEXAS BOARD OF PROFESSIONAL ENGINEERS
CERTIFICATE OF REGISTRATION # F-11852



EVALUATED FOR USE IN THE STATE OF TEXAS

The Fiberglass Door system described herein complies with the 2018 International Residential Code (IRC), Sections R301 & R609 and the 2018 International Building Code (IBC), Sections 1404.13, 1609, 1709.5, 2403 and 2404 subject to the following conditions:

1. Anchors shall be as listed and spaced as shown in the details. Anchor embedment to base material shall be beyond wall dressing or stucco.
2. When used in areas requiring wind-borne debris protection this product is required to be protected with an impact resistant covering that complies with Section R301.2.1.2 of the IRC and Section 1609.1.2 of the IBC.
3. Allowable design pressure requirements must be equal to or less than the design pressure rating shown in the design pressure chart, sheet 1 of this drawing.
4. Conditions not covered by this drawing are subject to further engineering analysis.

TABLE OF CONTENTS

| SHEET # | DESCRIPTION |
|---------|--|
| 1 | Typical Elevations, Design Pressures & General Notes |
| 2 | Door Panel Details |
| 3 | Sidelite Panel Details and Glazing Detail |
| 4 | Elevations |
| 5 | Horizontal & Vertical Cross Sections |
| 6 | Vertical Cross Sections |
| 7 | Frame Anchoring |
| 8 | Bill of Materials and components |

| CONFIGURATION | MAX. FRAME DIMENSION | MAX. SIDELITE D.L.O. DIMENSION | DESIGN PRESSURE (PSF) INSWING | | DESIGN PRESSURE (PSF) OUTSWING | |
|---------------|----------------------|--------------------------------|-------------------------------|----------|--------------------------------|----------|
| | | | POSITIVE | NEGATIVE | POSITIVE | NEGATIVE |
| X | 43.5" x 98.0" | N/A | +40.0 | -50.0 | +40.0 | -40.0 |
| OX/XO | 59.0" x 98.0" | 7" X 79" | +40.0 | -50.0 | +40.0 | -40.0 |
| OXO | 74.5" x 98.0" | 7" X 79" | +40.0 | -50.0 | +40.0 | -40.0 |

*See Sheet 2 for hardware limits on Design Pressure (PSF).

PRODUCT: PLASTPRO FIBERGLASS DOOR

PART OR ASSEMBLY: TYPICAL ELEVATION, DESIGN PRESSURES & GENERAL NOTES

| NO. | DATE | DESCRIPTION | BY |
|-----|---------|-----------------------------|-----|
| 1 | 5/26/20 | UPDATE TO 2018 IBC/IRC CODE | LFS |

DATE: 4/27/16

SCALE: N.T.S.

DWG. BY: JK

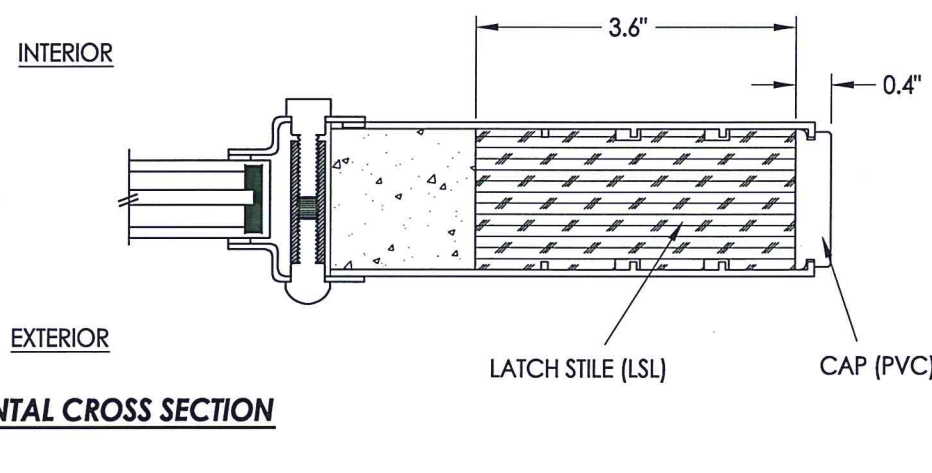
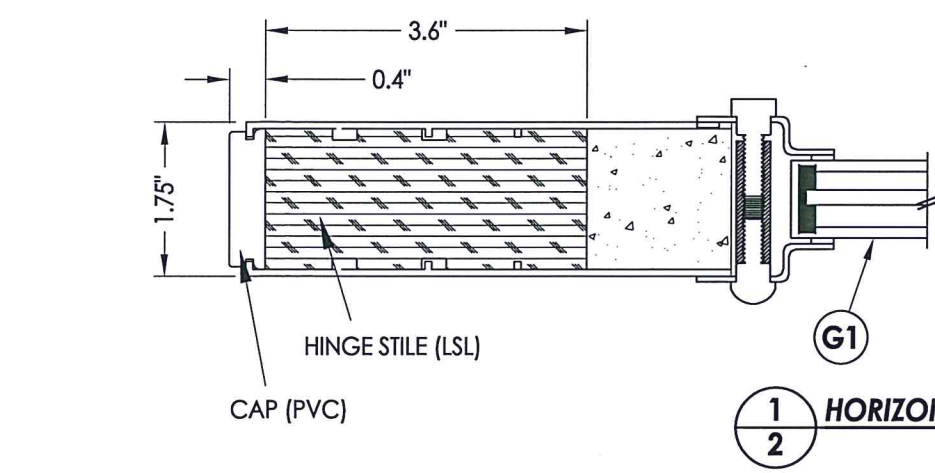
CHK. BY: LFS

DRAWING NO.:

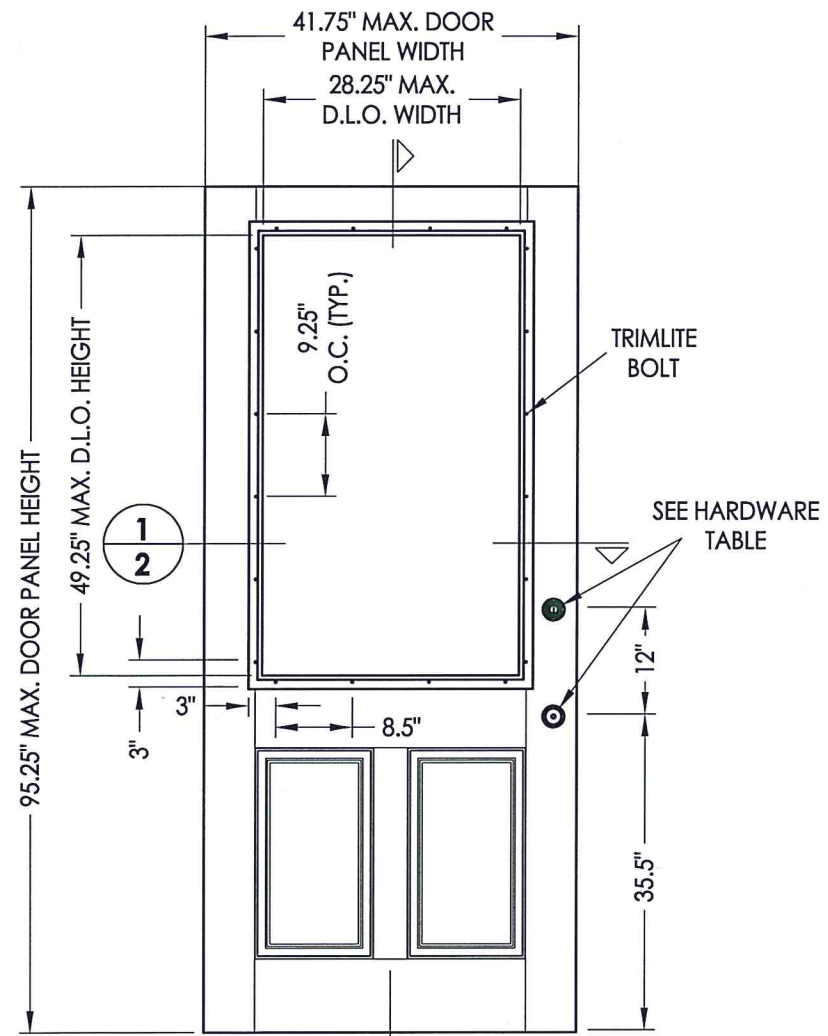
TX-4614

SHEET 1 OF 8

R:\Clients\Plastpro, Inc PERMANENT\B - TDI\TDI - DR 808 - Rustic Mahogany - Radius & Arch Radius Glazed NON-IMP\C - Drawings\TX-4613-14.dwg, 2.2



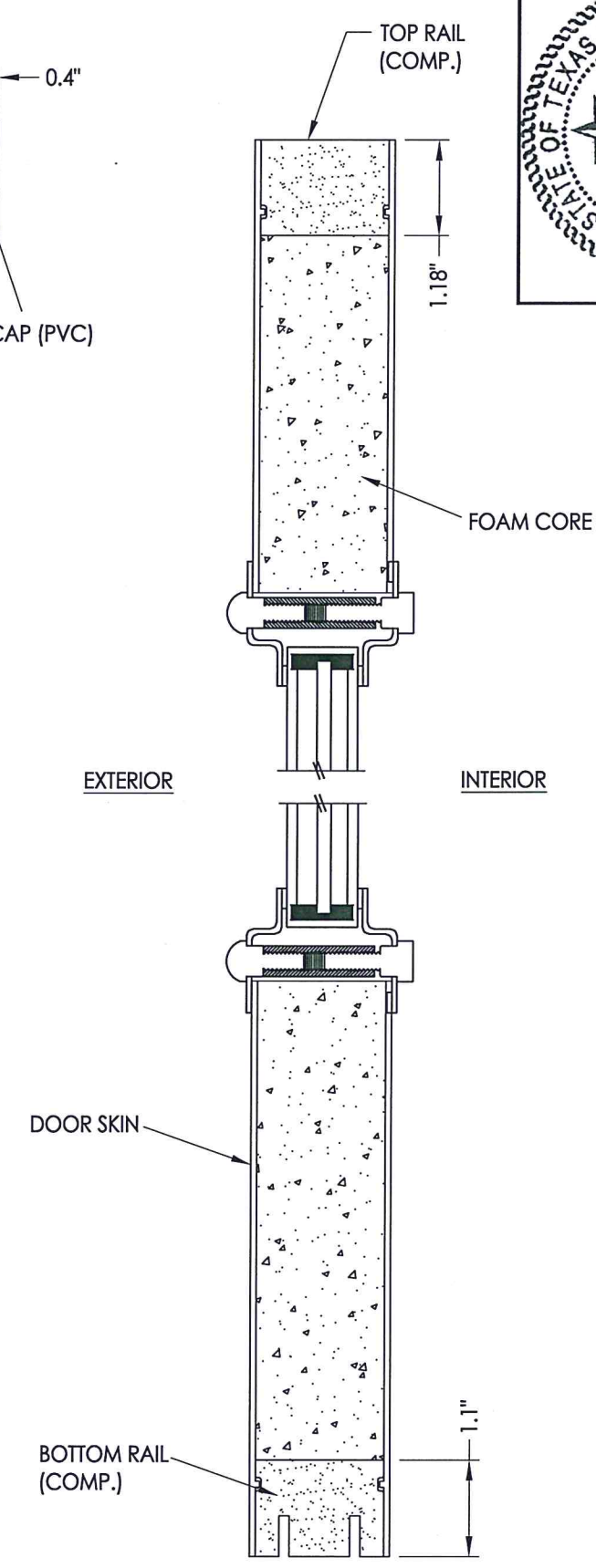
1
2 HORIZONTAL CROSS SECTION



40 DOOR PANEL
Plastpro
Fiberglass

FIBERGLASS DOOR SKIN: MIN. 0.095" THK.
CORE MATERIAL: POLYURETHANE FOAM (1.9 PCF MIN.)

| HARDWARE TABLE | | MAX. DESIGN PRESSURE (PSF) |
|----------------|------------------------|----------------------------|
| MANUFACTURER | MODEL | |
| KWIKSET | KNOB: SERIES (400) | +40/-50 |
| | DEADBOLT: SERIES (660) | |
| SCHLAGE | KNOB: F-SERIES | +35/-50 |
| | DEADBOLT: B-SERIES | |
| YALE | KNOB: 100 C | +40/-40 |
| | DEADBOLT: 820 | |



2
2 VERTICAL CROSS SECTION



Documents Prepared By: Lyndon F. Schmidt, P.E.
TEXAS P.E. #104123

RW BUILDING CONSULTANTS, INC.
P.O. Box 230 Vairico FL 33595
Phone No.: 813.659.9197

TEXAS BOARD OF PROFESSIONAL ENGINEERS
CERTIFICATE OF REGISTRATION # F-11852

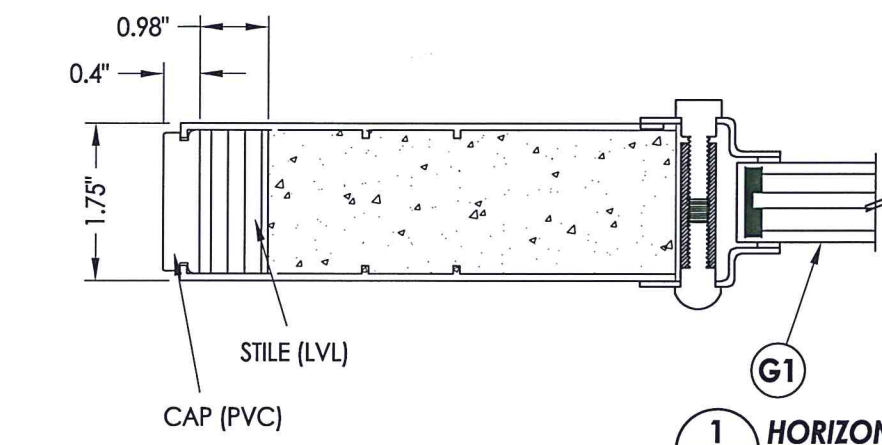
PRODUCT: PLASTPRO FIBERGLASS DOOR

PART OR ASSEMBLY: DOOR PANEL DETAILS

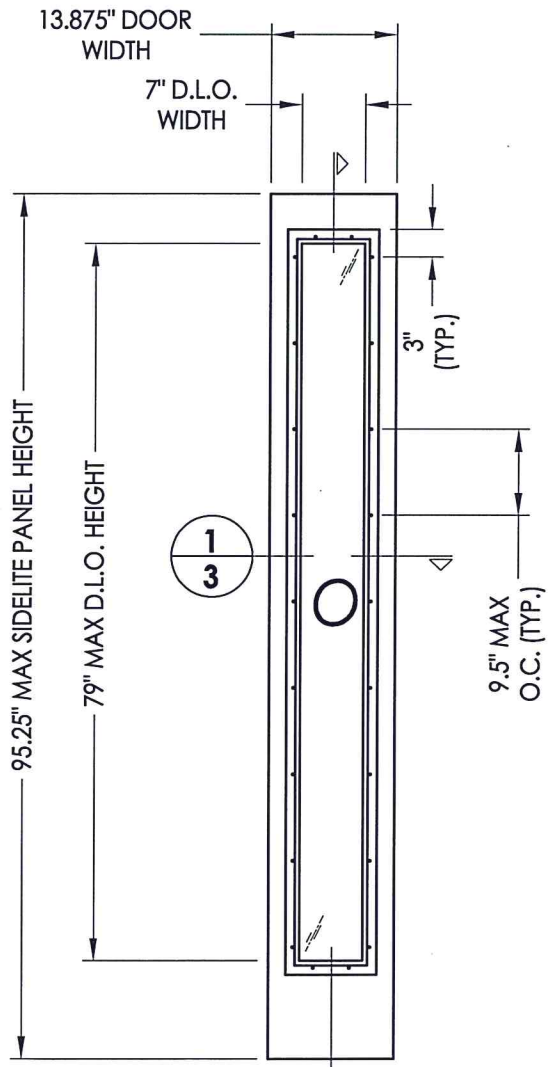
| REVISIONS | |
|-----------|---------|
| NO. | DATE |
| 1 | 5/26/20 |
| | DATE |
| | BY |
| | LFS |

DATE: 4/27/16
SCALE: N.T.S.
DWG. BY: JK
CHK. BY: LFS
DRAWING NO.: TX-4614
SHEET 2 OF 8

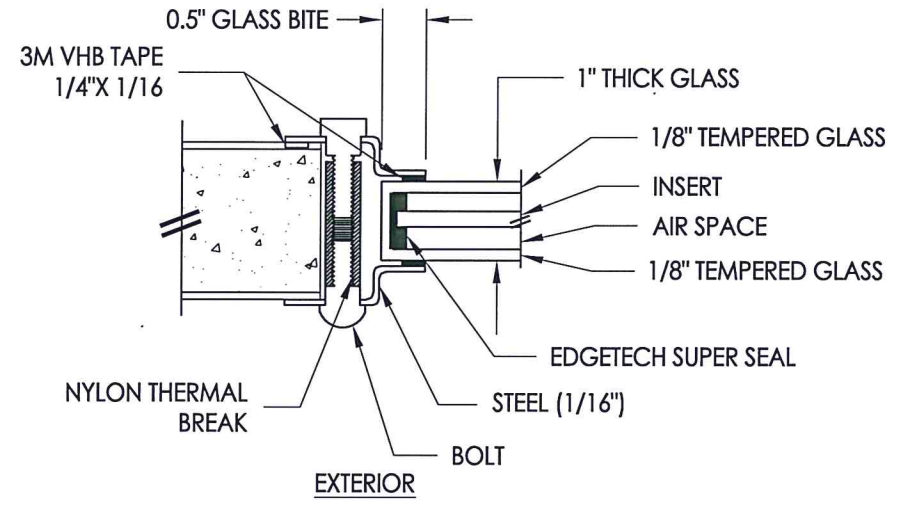
R:\Clients\Plastpro, Inc PERMANENT\B - TD\TDI - DR 808 - Rustic Mahogany - Radius & Arch Radius Glazed NON-IMP\C - Drawings\TX-4613-14.dwg, 3.2



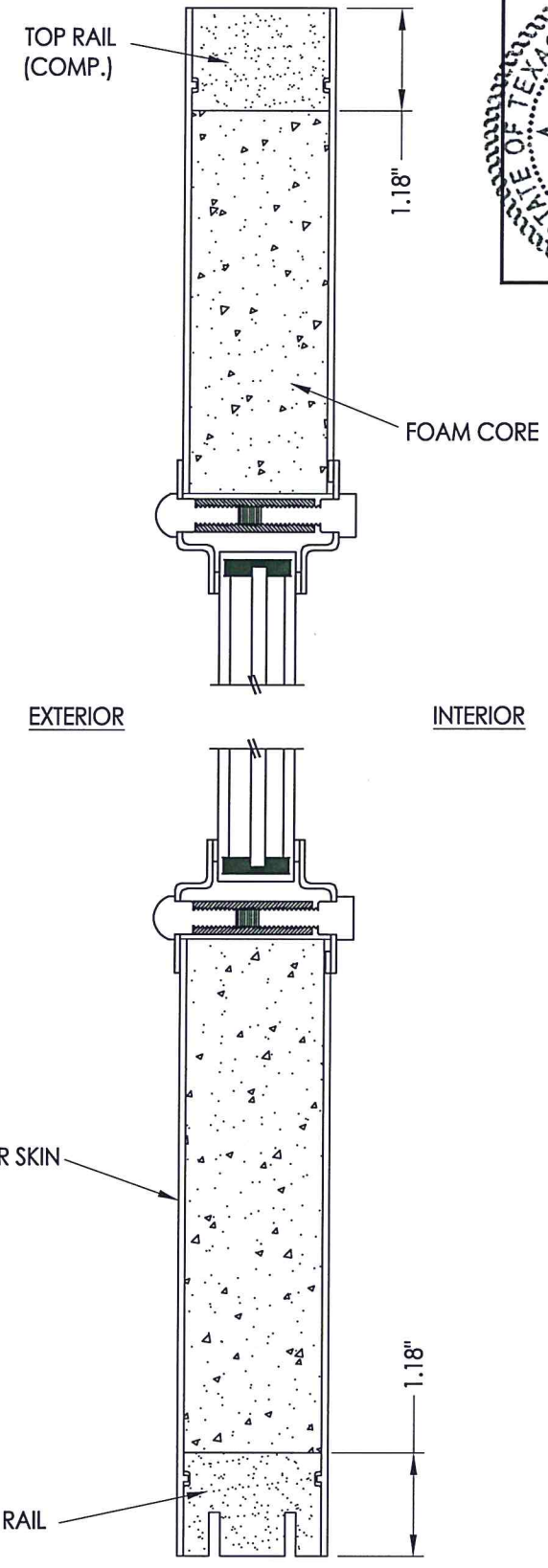
1
3 HORIZONTAL CROSS SECTION



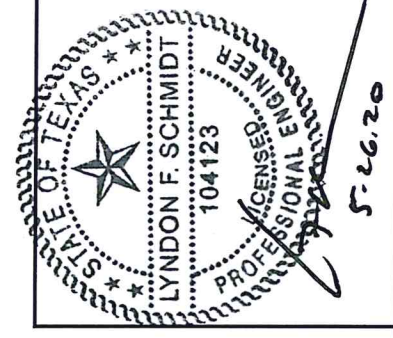
50 SIDELITE PANEL
Plastpro
Fiberglass



G1 GLAZING DETAIL
Trimlite Lite Frame



2
3 VERTICAL CROSS SECTION



Documents Prepared By: Lyndon F. Schmidt, P.E.
TEXAS P.E. #104123

RW BUILDING CONSULTANTS, INC.
P.O. Box 230 Volrico FL 33595
Phone No.: 813.659.9197

TEXAS BOARD OF PROFESSIONAL ENGINEERS
CERTIFICATE OF REGISTRATION # F-11852

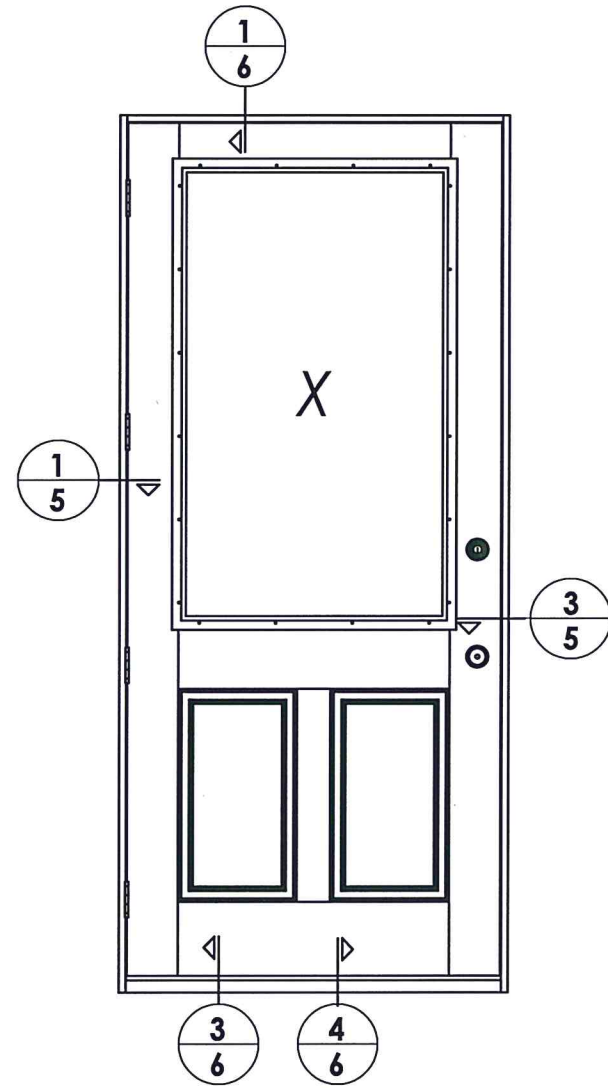
PRODUCT: PLASTPRO
FIBERGLASS DOOR

PART OR ASSEMBLY:
SIDELITE PANEL DETAILS
AND GLAZING DETAIL

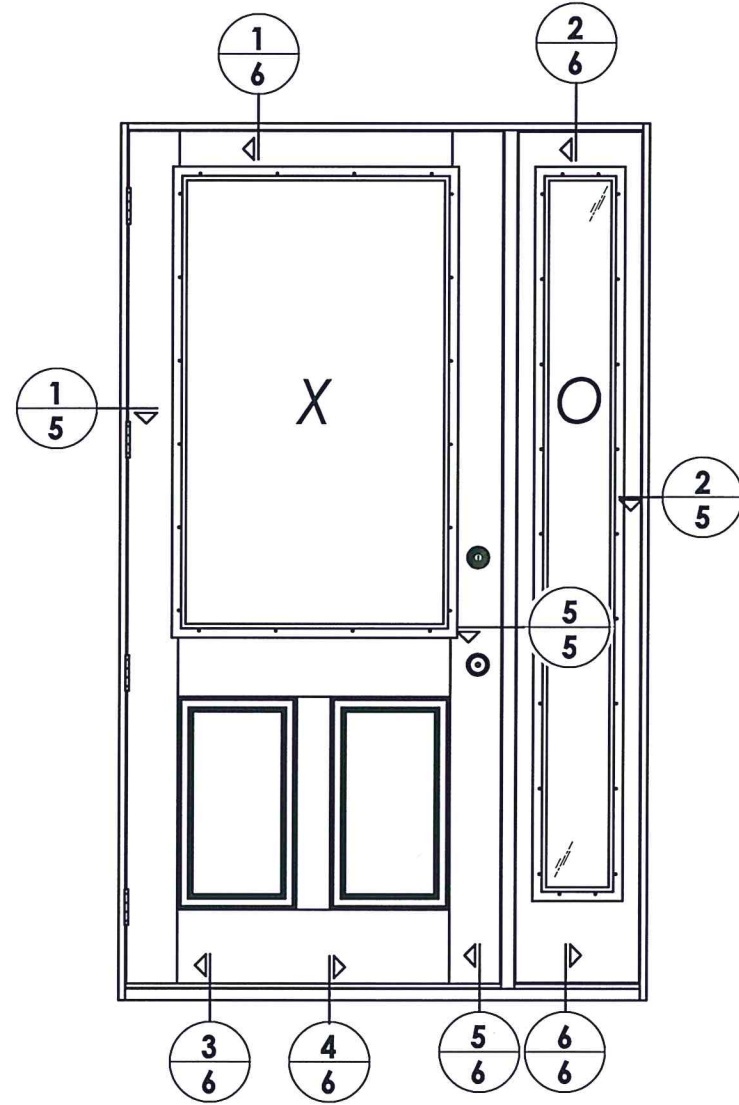
| NO. | DATE | DESCRIPTION | BY |
|-----|---------|-----------------------------|-----|
| 1 | 5/26/20 | UPDATE TO 2018 IBC/IRC CODE | LFS |

DATE: 4/27/16
SCALE: N.T.S.
DWG. BY: JK
CHK. BY: LFS
DRAWING NO.: TX-4614
SHEET 3 OF 8

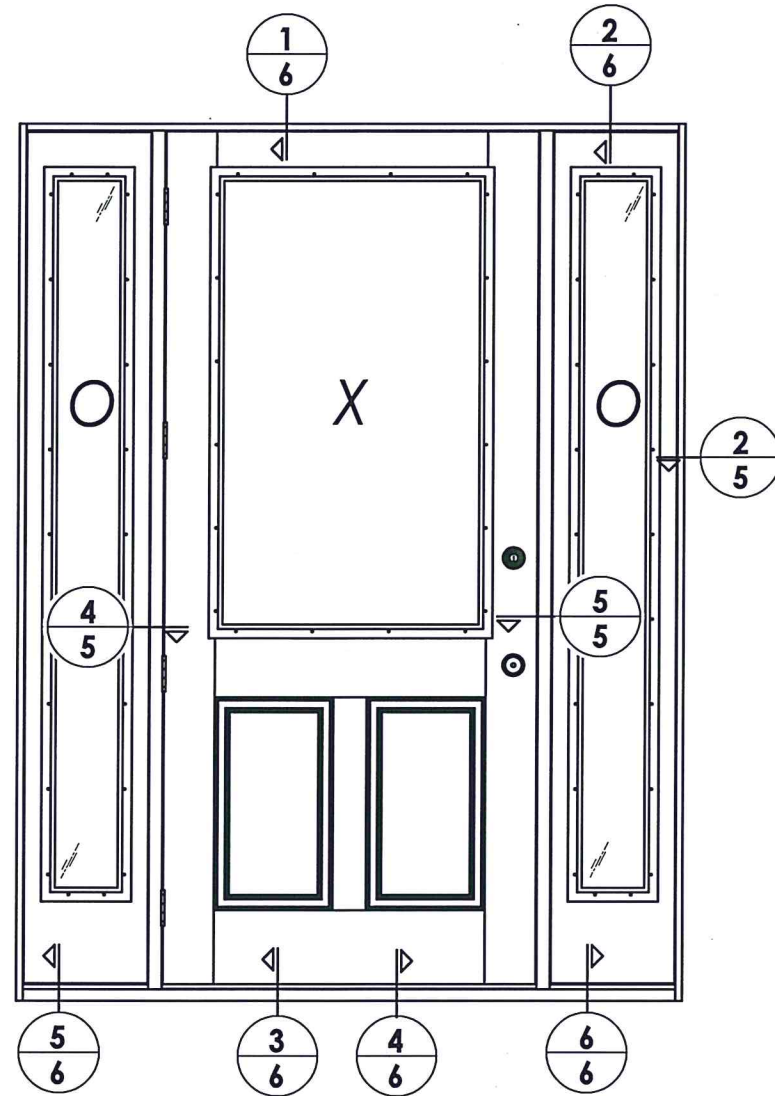
FIBERGLASS DOOR SKIN: MIN. 0.075" THK.
CORE MATERIAL: POLYURETHANE FOAM (1.9 PCF MIN.)



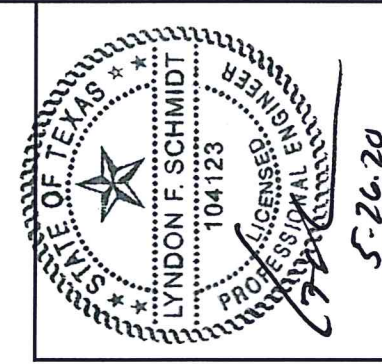
ELEVATION (X)



ELEVATION (XO)



ELEVATION (OXO)



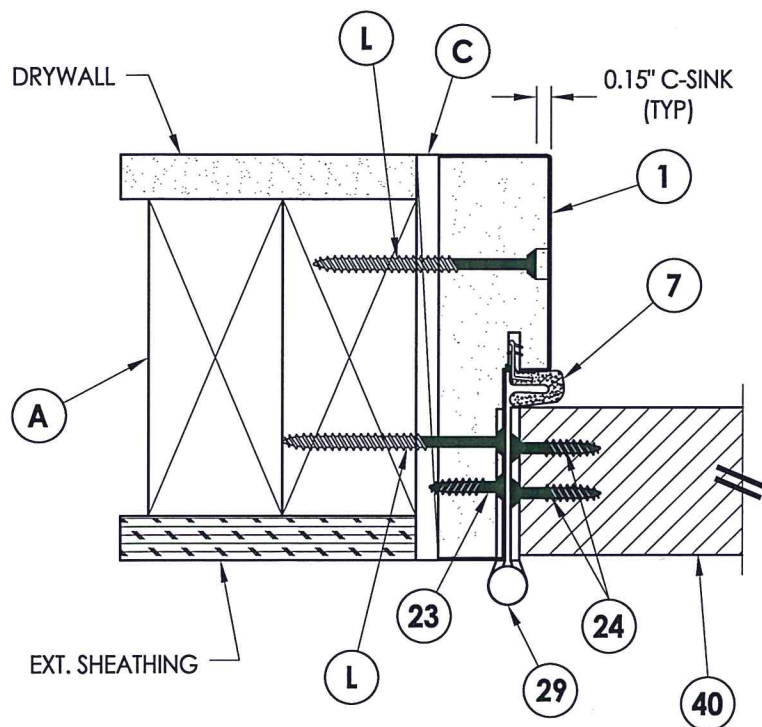
Documents Prepared By: Lyndon F. Schmidt, P.E.
TEXAS P.E. #104123

RW BUILDING CONSULTANTS, INC.
P.O. Box 230 Valrico FL 33595
Phone No.: 813.659.9197

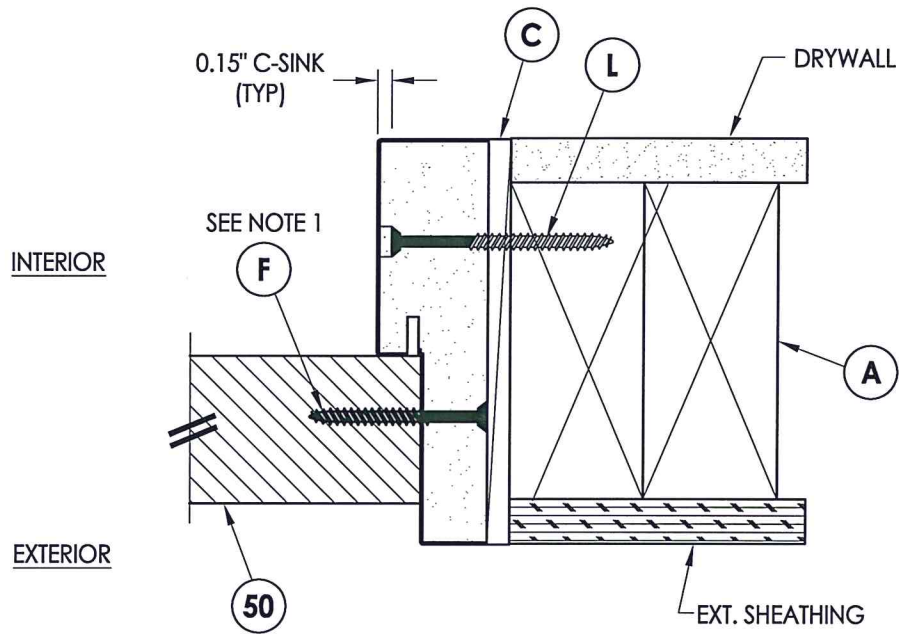
TEXAS BOARD OF PROFESSIONAL ENGINEERS
CERTIFICATE OF REGISTRATION # F-11852

| | |
|-----------------------------------|---------|
| PRODUCT: PLASTPRO FIBERGLASS DOOR | |
| PART OR ASSEMBLY: ELEVATIONS | |
| NO. | DATE |
| 1 | 5/26/20 |
| UPDATE TO 2018 IBC/IRC CODE | |
| LFS | BY |
| REVISIONS | |
| DATE: 4/27/16 | |
| SCALE: N.T.S. | |
| DWG. BY: JK | |
| CHK. BY: LFS | |
| DRAWING NO.: TX-4614 | |
| SHEET 4 OF 8 | |

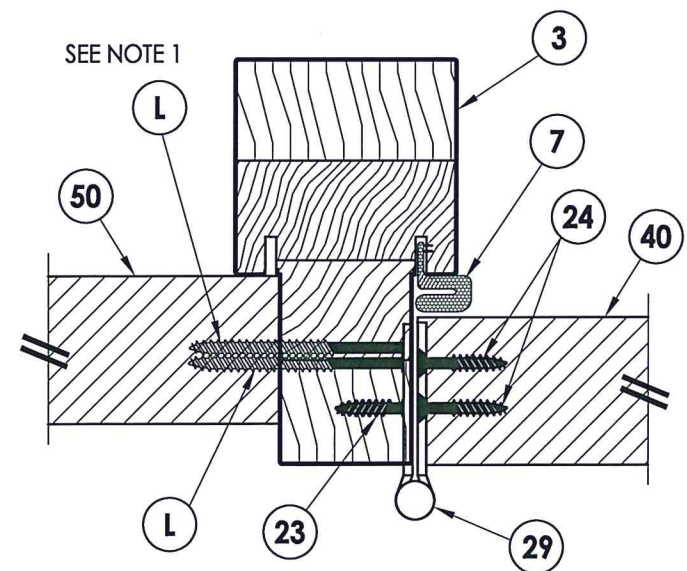
R:\Clients\Plastpro, Inc PERMANENT\B - TD\TDI - DR 808 - Rustic Mahogany - Radius & Arch Radius Glazed NON-IMP\C - Drawings\TX-4613-14.dwg, 5.2



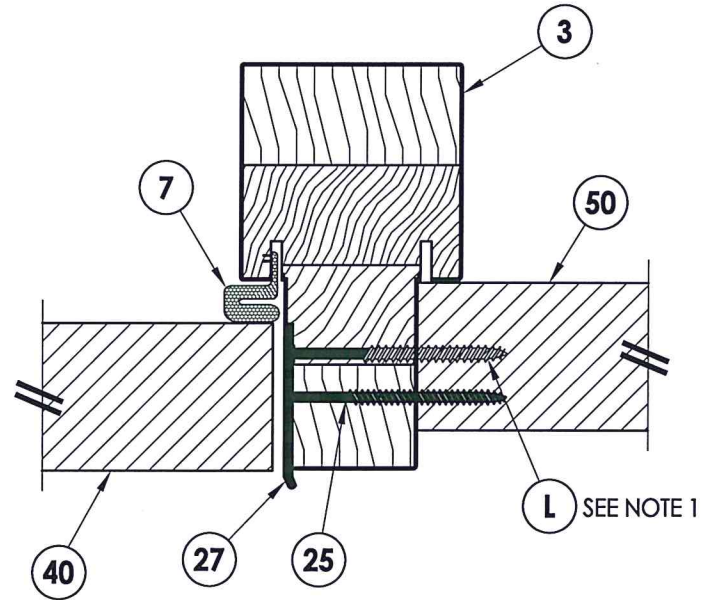
1 HORIZONTAL CROSS SECTION
5 Outswing shown (Inswing similar)



2 HORIZONTAL CROSS SECTION
5 Outswing shown (Inswing similar)

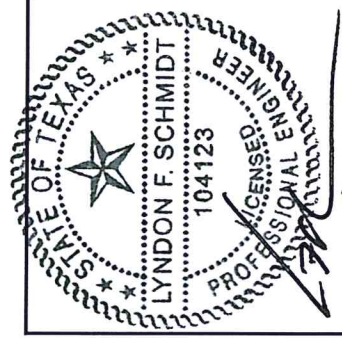


4 HORIZONTAL CROSS SECTION
5 Outswing shown (Inswing similar)



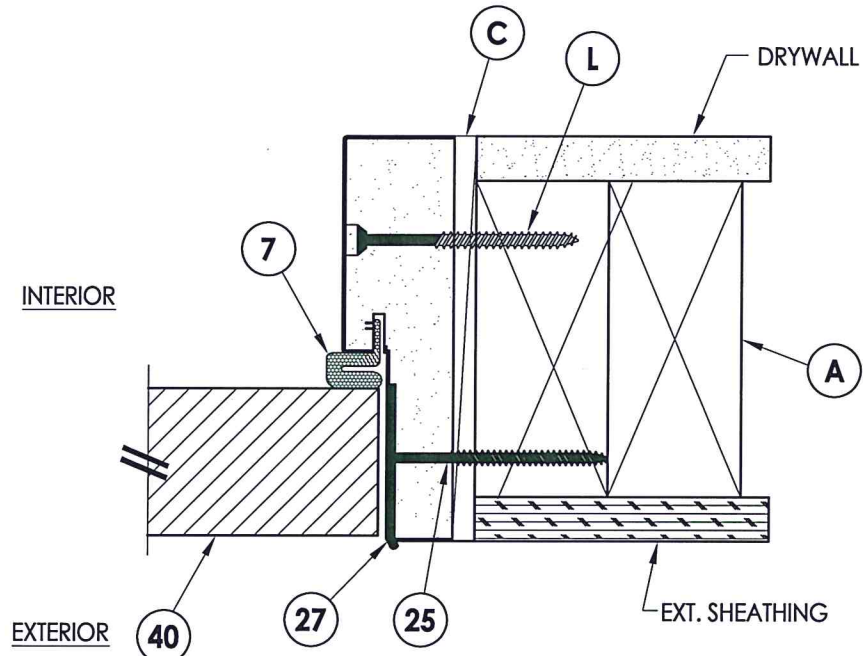
5 HORIZONTAL CROSS SECTION
5 Outswing shown (Inswing similar)

Note:
1. Sidelite assembly screws located 6" from top and bottom then 5 more equally spaced (7 total).



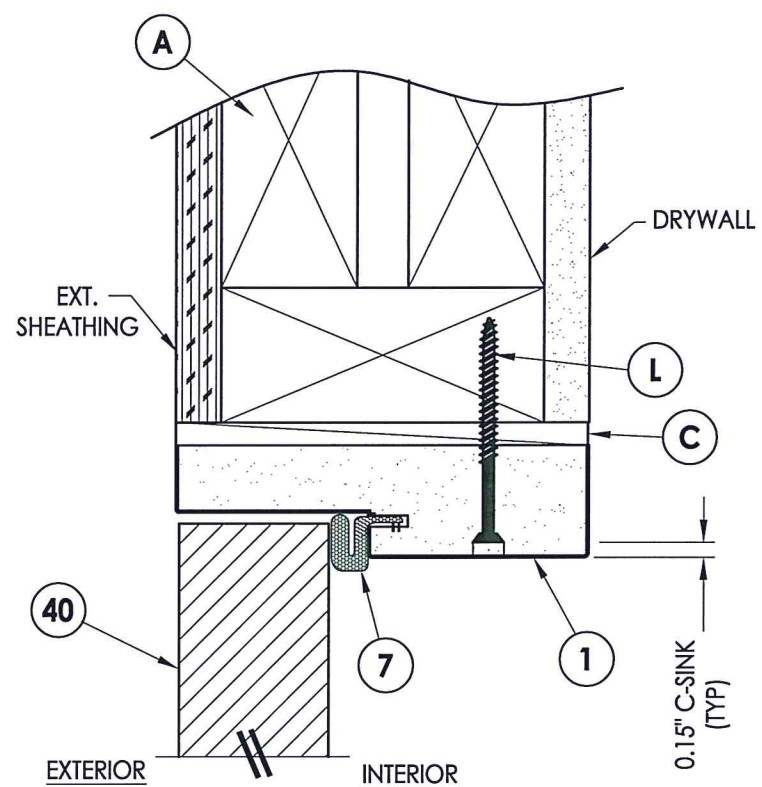
Documents Prepared By: Lyndon F. Schmidt, P.E.
TEXAS P.E. #104123

R.W. BUILDING CONSULTANTS, INC.
P.O. Box 230 Vairico FL, 33595
Phone No.: 813.659.9197
TEXAS BOARD OF PROFESSIONAL ENGINEERS
CERTIFICATE OF REGISTRATION # F-11852

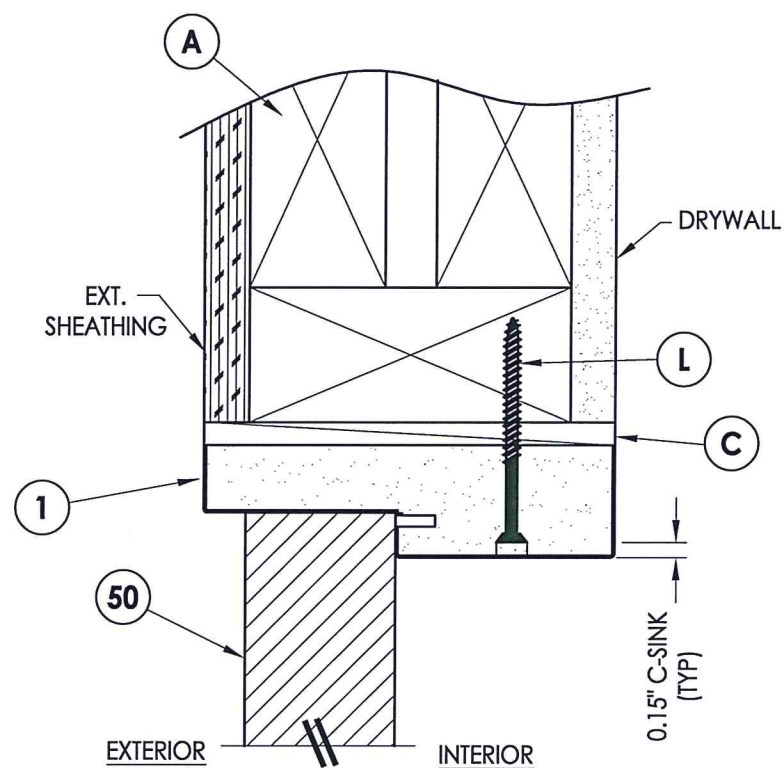


3 HORIZONTAL CROSS SECTION
5 Outswing shown (Inswing similar)

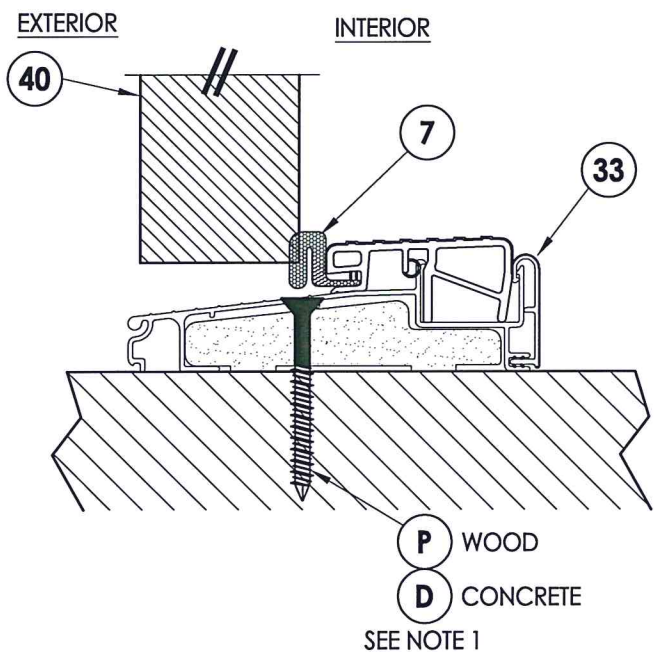
| | | | | | |
|-------------------|--------------------------------------|------|---------|-----------------------------|-----|
| PRODUCT: | PLASTPRO FIBERGLASS DOOR | | | | |
| PART OR ASSEMBLY: | HORIZONTAL & VERTICAL CROSS SECTIONS | | | | |
| NO. | 1 | DATE | 5/26/20 | UPDATE TO 2018 IBC/IRC CODE | LFS |
| BY | | | | | |
| REVISIONS | | | | | |
| DATE: | 4/27/16 | | | | |
| SCALE: | N.T.S. | | | | |
| DWG. BY: | JK | | | | |
| CHK. BY: | LFS | | | | |
| DRAWING NO.: | TX-4614 | | | | |
| SHEET | 5 | OF | 8 | | |



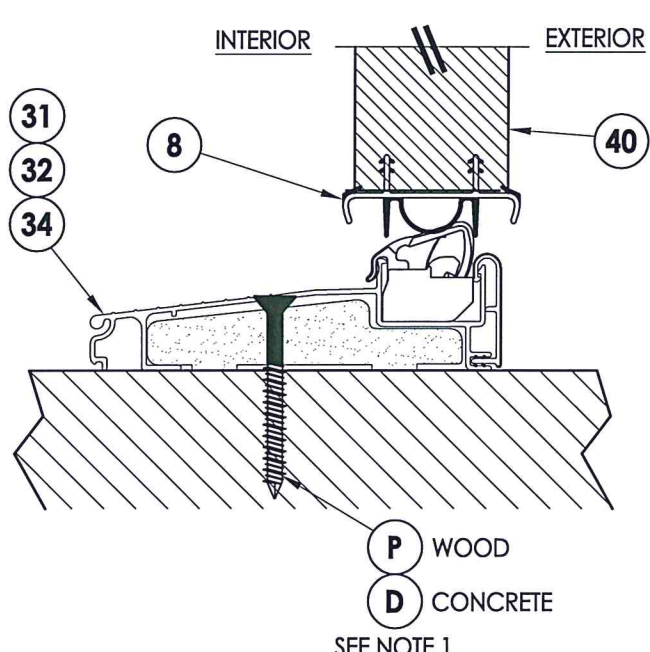
1 VERTICAL CROSS SECTION
6 Outswing shown (Inswing similar)



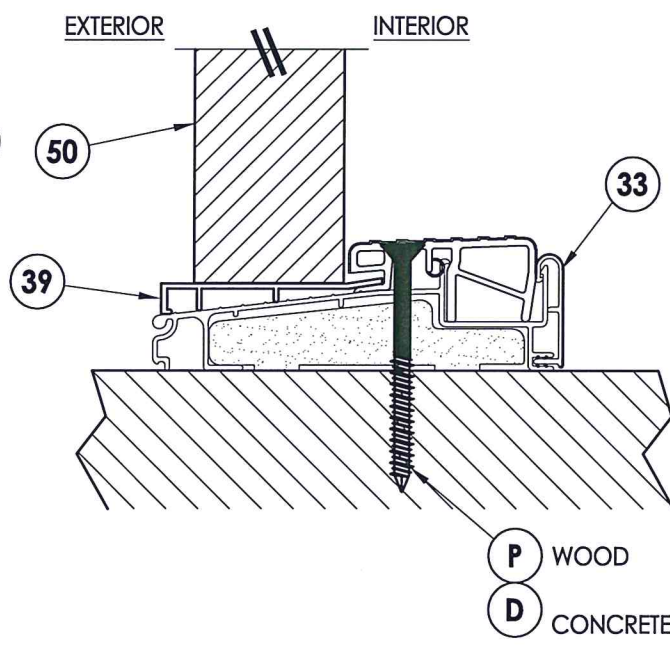
2 VERTICAL CROSS SECTION
6 Outswing shown (Inswing similar)



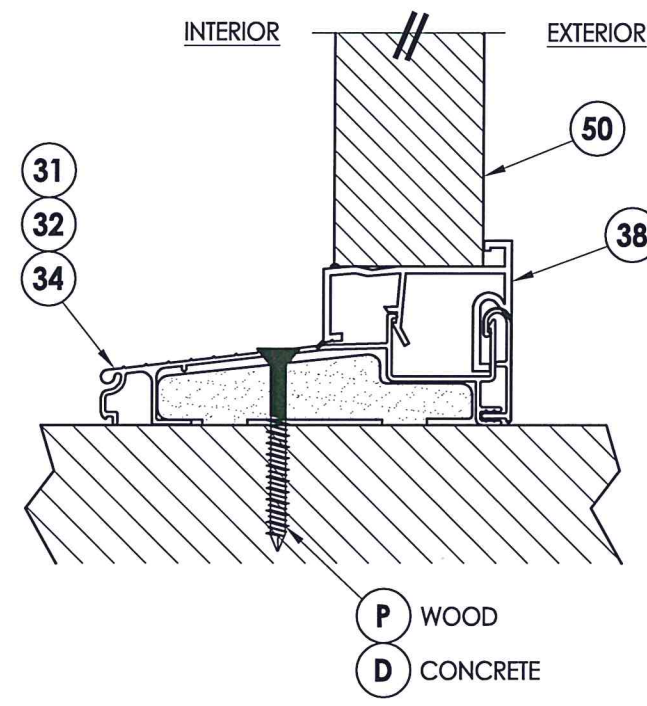
3 VERTICAL CROSS SECTION
6 Outswing configuration



4 VERTICAL CROSS SECTION
6 Inswing configuration



5 VERTICAL CROSS SECTION
6 Outswing configuration



6 VERTICAL CROSS SECTION
6 Inswing configuration

Note:
1. Sill anchor is not required for single (x) units.



Documents Prepared By: Lyndon F. Schmidt, P.E.
TEXAS P.E. #104123

RW BUILDING CONSULTANTS, INC.
P.O. Box 230 Valrico FL 33595
Phone No.: 813.659.9197

TEXAS BOARD OF PROFESSIONAL ENGINEERS
CERTIFICATE OF REGISTRATION # F-11852

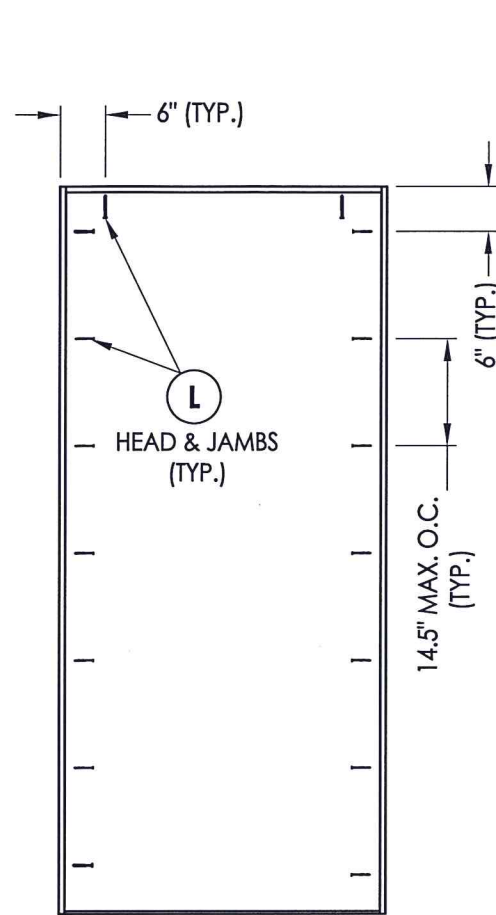
PRODUCT: PLASTPRO FIBERGLASS DOOR

PART OR ASSEMBLY: VERTICAL CROSS SECTIONS

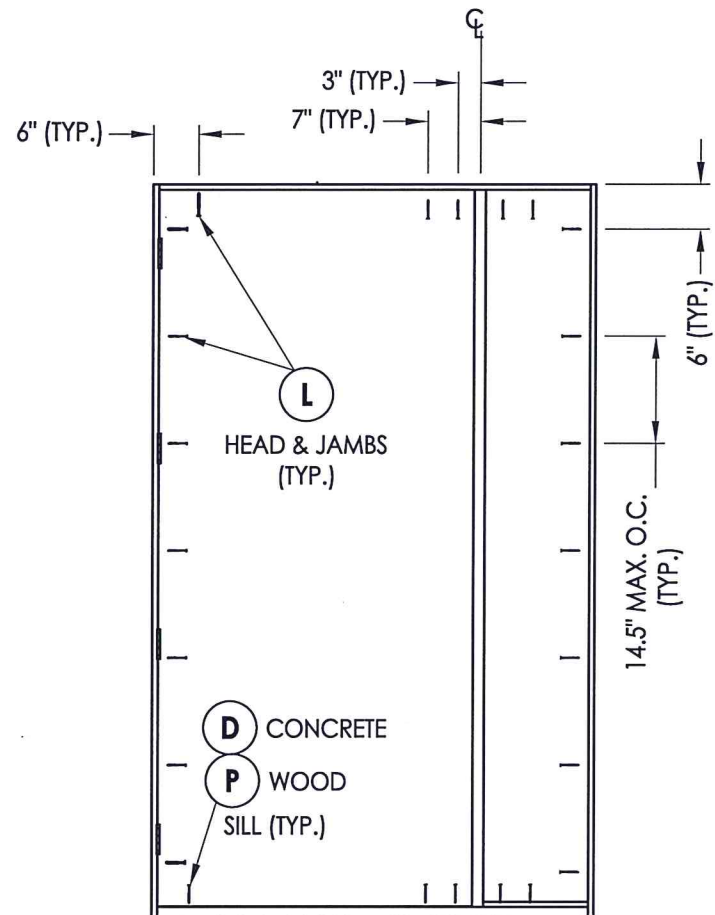
| NO. | DATE | UPDATE TO 2018 IBC/IRC CODE | LFS | BY |
|-----|---------|-----------------------------|-----|----|
| 1 | 5/26/20 | | | |

REVISIONS

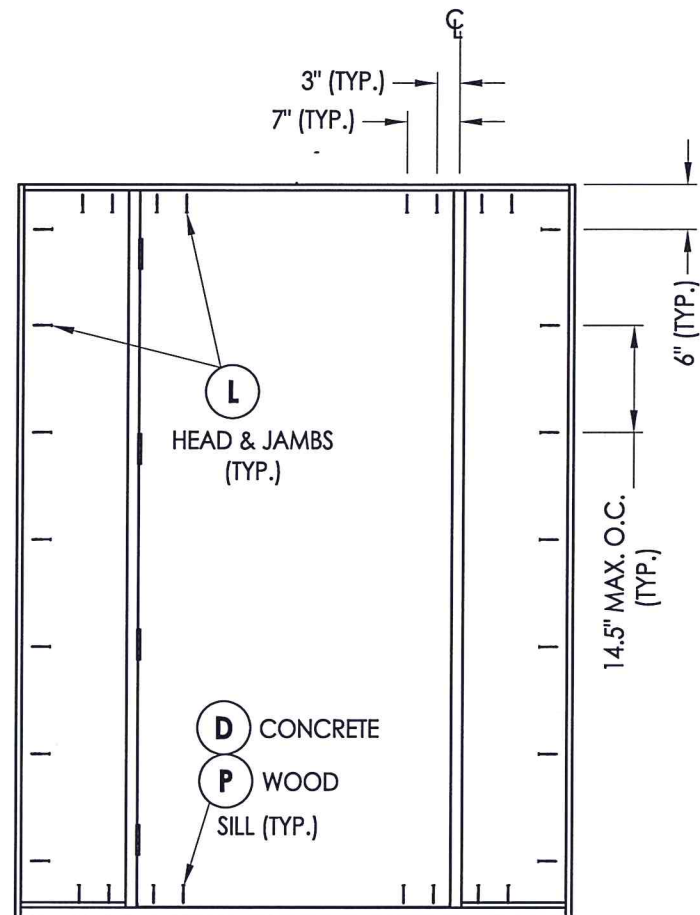
DATE: 4/27/16
SCALE: N.T.S.
DWG. BY: JK
CHK. BY: LFS
DRAWING NO.: TX-4614
SHEET 6 OF 8



X



XO/OX



OXO

FRAME ANCHORING

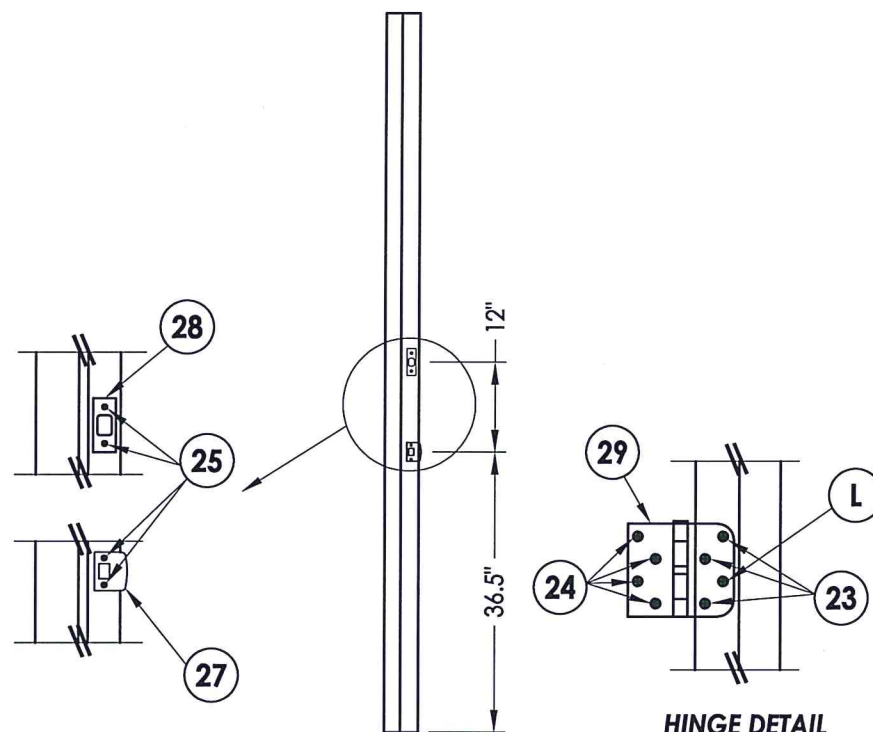
CONCRETE ANCHOR NOTES:

- Concrete anchor locations at the corners may be adjusted to maintain the min. edge distance to mortar joints.
- Concrete anchor locations noted as "MAX. ON CENTER" must be adjusted to maintain the min. edge distance to mortar joints, additional concrete anchors may be required to ensure the "MAX. ON CENTER" dimension are not exceeded.
- Concrete anchor table:

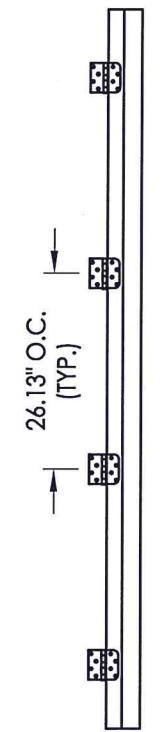
| ANCHOR TYPE | ANCHOR SIZE | MIN. EMBEDMENT | MIN. CLEARANCE TO MASONRY EDGE | MIN. CLEARANCE TO ADJACENT ANCHOR |
|----------------|-------------|----------------|--------------------------------|-----------------------------------|
| ITW TAPCON® | 1/4" | 1-3/4" | 2" | 4" |
| ELCO ULTRACON® | 1/4" | 1-3/4" | 1" | 4" |

WOOD SCREW INSTALLATION NOTES:

- Maintain a minimum 5/8" edge distance, 1" end distance, & 1" o.c. spacing of wood screws to prevent the splitting of wood.



LATCH AND DEADBOLT STRIKE PLATE DETAILS



HINGE JAMB



Documents Prepared By: Lyndon F. Schmidt, P.E.
TEXAS P.E. #104123

RW BUILDING CONSULTANTS, INC.
P.O. Box 230 Valrico FL 33595
Phone No.: 813.659.9197

TEXAS BOARD OF PROFESSIONAL ENGINEERS
CERTIFICATE OF REGISTRATION # F-11852

PRODUCT: PLASTPRO FIBERGLASS DOOR

PART OR ASSEMBLY: FRAME ANCHORING

| NO. | DATE | DESCRIPTION | BY |
|-----|---------|-----------------------------|-----|
| 1 | 5/26/20 | UPDATE TO 2018 IBC/IRC CODE | LFS |

DATE: 4/27/16

SCALE: N.T.S.

DWG. BY: JK

CHK. BY: LFS

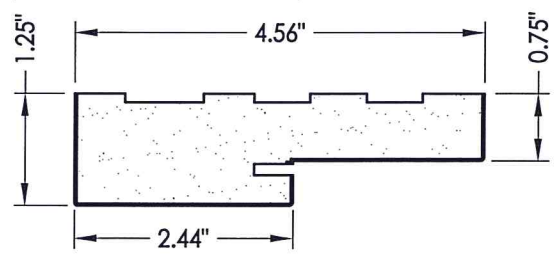
DRAWING NO.:

TX-4614

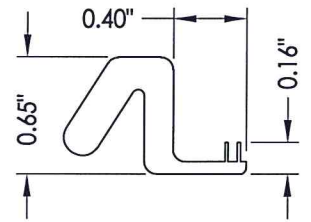
SHEET 7 OF 8

R:\Clients\Plastpro, Inc PERMANENT\B - TDI\TDI - DR 808 - Rustic Mahogany - Radius & Arch Radius Glazed NON-IMP\C - Drawings\TX-4613-14.dwg, 8.2

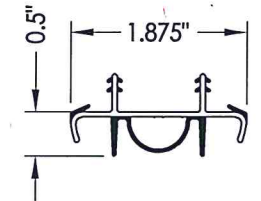
| BILL OF MATERIALS | | |
|-------------------|---|-------------|
| ITEM # | DESCRIPTION | MATERIAL |
| A | 2X FRAMING (G >= 0.42) | WOOD |
| C | 1/4" MAX. SHIM SPACE | - |
| D | 1/4" PFH CONCRETE SCREW (1-3/4" MIN. EMB.) | STEEL |
| F | #10 X 2" PFH WOOD SCREW | STEEL |
| L | #10 X 2-1/2" PFH WOOD SCREW (1.15" MIN. EMB.) | STEEL |
| P | #10 X 3" PFH WOOD SCREW (1.5" MIN. EMB.) | STEEL |
| 1 | POLY FIBER JAMB | POLY FIBER |
| 3 | MULLION (PINE) | WOOD |
| 7 | WEATHERSTRIP | FOAM |
| 8 | DOOR BOTTOM SWEEP | VINYL |
| 23 | #10 X 3/4" PFH WOOD SCREW | STEEL |
| 24 | #10 X 1" PFH WOOD SCREW | STEEL |
| 25 | #8 X 2-1/2" PFH WOOD SCREW | STEEL |
| 27 | LATCH STRIKE PLATE | STEEL |
| 28 | DEADBOLT STRIKE PLATE | STEEL |
| 29 | 4" X 4" BUTT HINGE | STEEL |
| 31 | INSWING THRESHOLD | ALUM / WOOD |
| 32 | INSWING THRESHOLD | ALUM / COMP |
| 33 | OUTSWING THRESHOLD | ALUM / COMP |
| 34 | INSWING THRESHOLD | ALUM / COMP |
| 38 | SIDELITE ADAPTER | VINYL |
| 39 | SIDELITE ADAPTER | VINYL |
| 40 | DOOR PANEL - SEE DOOR PANEL DETAIL SHEET FOR CONSTRUCTION DETAILS | - |
| 50 | SIDELITE PANEL - SEE SIDELITE PANEL DETAIL SHEET FOR CONSTRUCTION DETAILS | - |



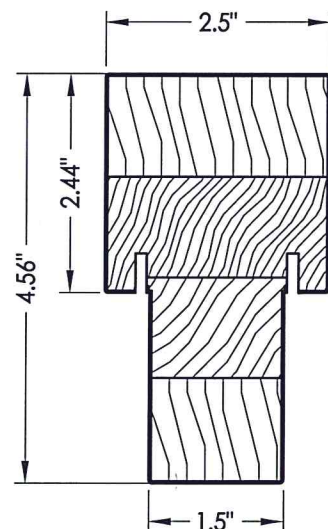
1 POLY FIBER JAMB



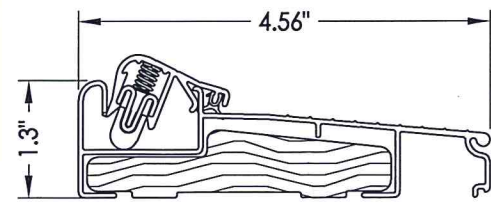
7 WEATHERSTRIP
Endura Force 5



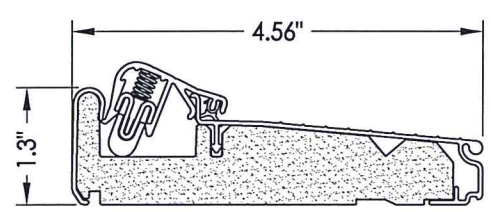
8 DOOR BOTTOM SWEEP
(Articulating)



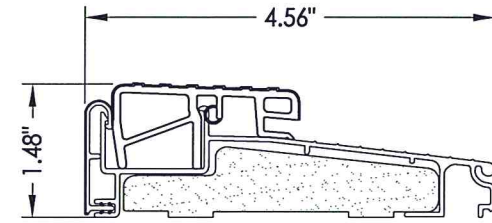
3 MULLION
Endura



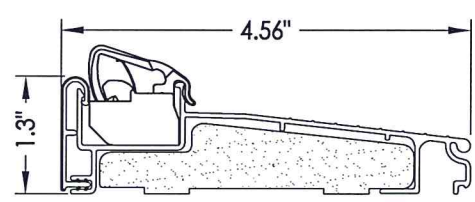
31 INSWING THRESHOLD
Endura (Articulating)
ALUM/WOOD



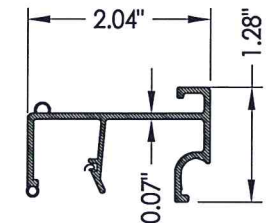
32 INSWING THRESHOLD
Endura (Articulating)
ALUM/COMP



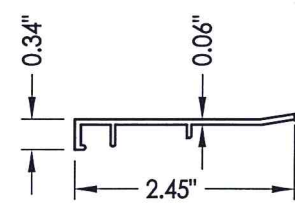
33 OUTSWING THRESHOLD
Endura
ALUM/COMP



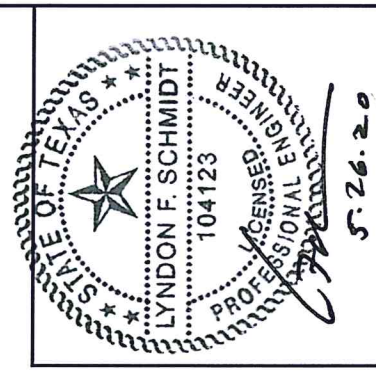
34 INSWING THRESHOLD
Endura (Articulating)
ALUM/COMP/VINYL



38 SIDELITE ADAPTER
Endura



39 SIDELITE ADAPTER
Endura



Documents Prepared By: Lyndon F. Schmidt, P.E.
TEXAS P.E. #104123

RW BUILDING CONSULTANTS, INC.
P.O. Box 230 Valrico FL, 33595
Phone No.: 813.659.9197

TEXAS BOARD OF PROFESSIONAL ENGINEERS
CERTIFICATE OF REGISTRATION # F-11852

PRODUCT: PLASTPRO
FIBERGLASS DOOR

PART OR ASSEMBLY:
BILL OF MATERIALS
&
COMPONENTS

| NO. | DATE | DESCRIPTION | LFS | BY |
|-----------|---------|-----------------------------|-----|----|
| 1 | 5/26/20 | UPDATE TO 2018 IBC/IRC CODE | | |
| REVISIONS | | | | |

DATE: 4/27/16

SCALE: N.T.S.

DWG. BY: JK

CHK. BY: LFS

DRAWING NO.: TX-4614

SHEET 8 OF 8