



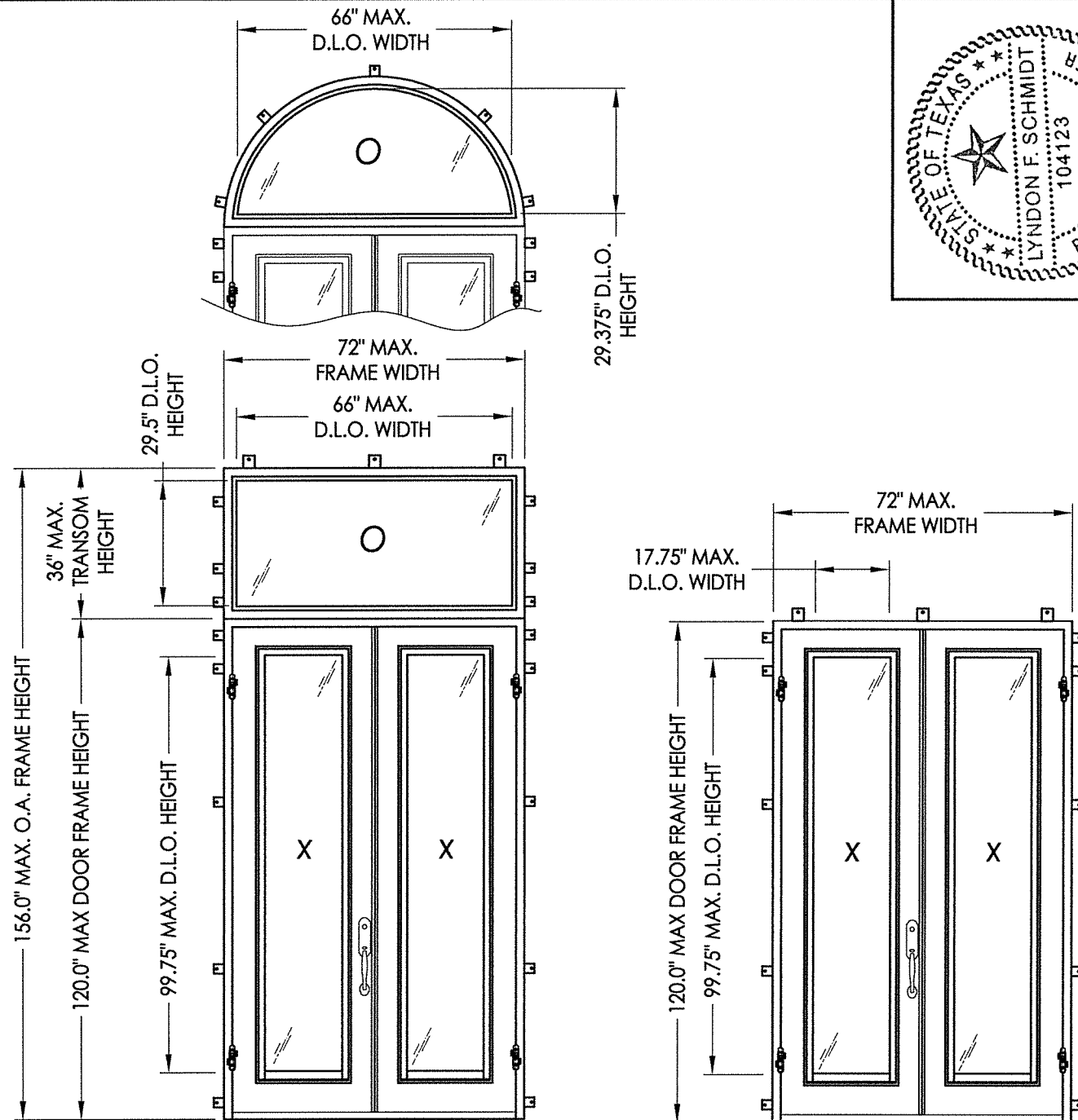
GLAZED IRON DOUBLE DOOR w/ & w/out TRANSOM IN SWING/OUT SWING "IMPACT"

EVALUATED FOR USE IN THE STATE OF TEXAS

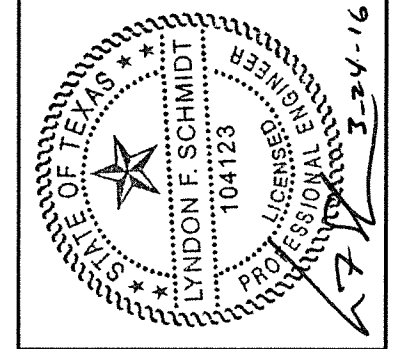
The Iron Door System described herein complies with the 2006 International Residential Code (IRC), Sections R301 & R613 and the 2006 International Building Code (IBC), Sections 1405.12, 1609, 1714.5, 2403 and 2404 (including Texas revisions) subject to the following conditions:

1. Anchors shall be as listed and spaced as shown in the details. Anchor embedment to base material shall be beyond wall dressing or stucco.
2. This system has been tested and evaluated as a large missile impact protective system for installation in the Seaward, Inland I and Inland II areas. This product meets missile level "D" as defined in ASTM E 1996.
3. Allowable design pressure requirements must be equal to or less than the design pressure rating shown in the design pressure chart, sheet 1 of this drawing.
4. For 2x stud framing construction, anchoring of these units shall be the same as that shown for 2x buck masonry construction.
5. Conditions not covered by this drawing are subject to further engineering analysis.

TABLE OF CONTENTS	
SHEET#	DESCRIPTION
1	Typical elevations, design pressures, & general notes
2	Door panel details & glazing details
3	Elevations
4	Horizontal & vertical cross sections
5	Vertical cross sections
6	Buck & frame anchoring (XX)
7	Buck & frame anchoring (O/XX)
8	Bill of materials & components



CONFIGURATION	OVERALL FRAME DIMENSION	GLASS TYPE	DESIGN PRESSURE (PSF)			
			IN SWING		OUT SWING	
			POS.	NEG.	POS.	NEG.
XX	72.0" x 120.0"	G1	+70.0	-70.0	+70.0	-70.0
O XX	72.0" x 156.0"	G1	+70.0	-70.0	+70.0	-70.0
XX	72.0" x 120.0"	G2	+50.0	-50.0	+50.0	-55.0
O XX	72.0" x 156.0"	G2	+50.0	-50.0	+50.0	-55.0



Documents Prepared By: Lyndon F. Schmidt, P.E.
TEXAS P.E. #104123

RW BUILDING CONSULTANTS, INC.
P.O. Box 230 Vairico FL 33595
Phone No.: 813.659.9197

TEXAS BOARD OF PROFESSIONAL ENGINEERS
CERTIFICATE OF REGISTRATION # F-11852

PRODUCT: FLORIDA IRON DOORS

PART OR ASSEMBLY: TYPICAL ELEVATIONS, DESIGN PRESSURES & GENERAL NOTES

NO.	DATE	BY	REVISIONS

DATE: 3/23/16

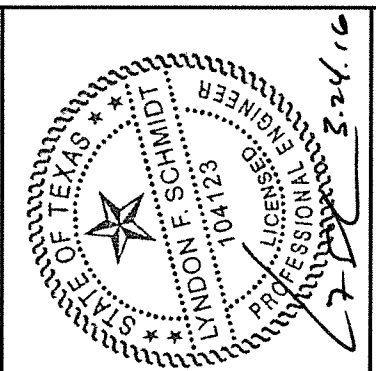
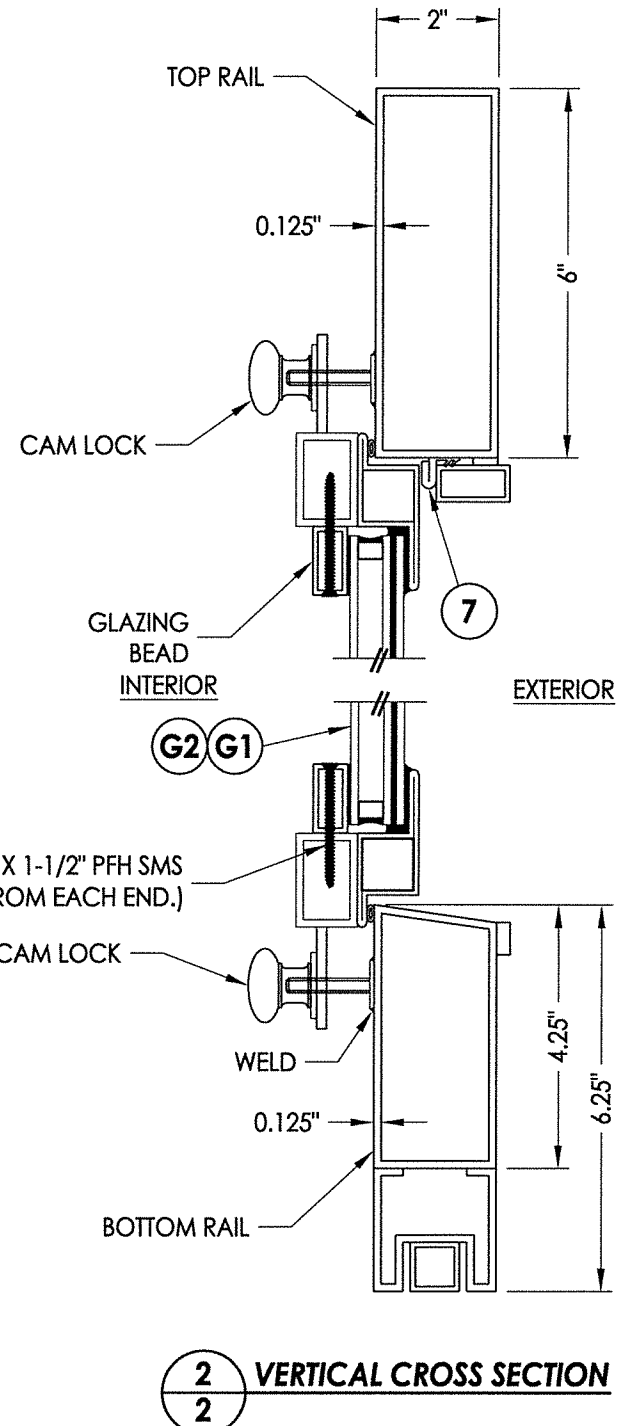
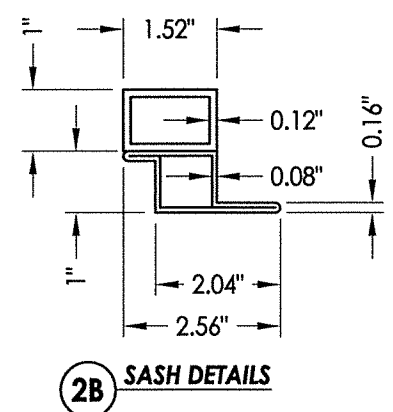
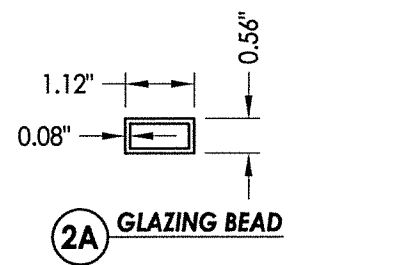
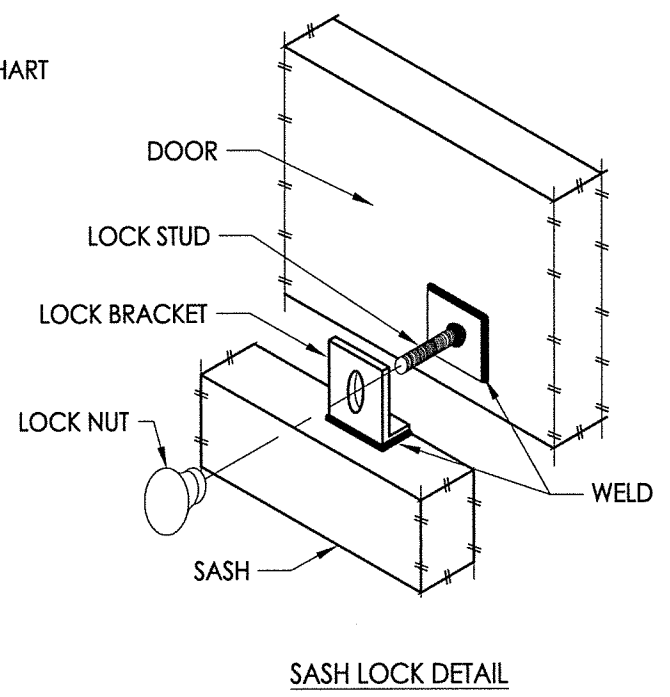
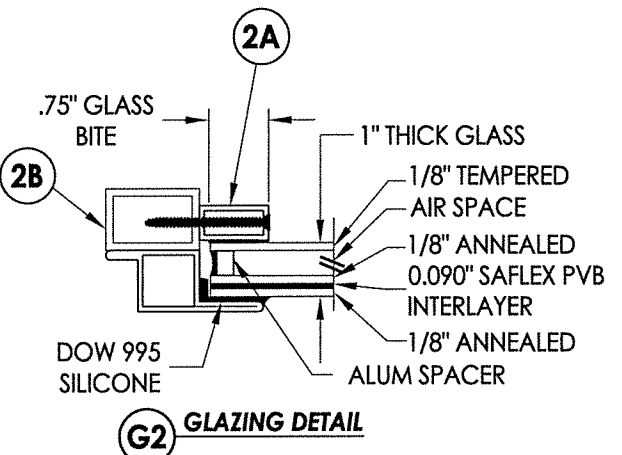
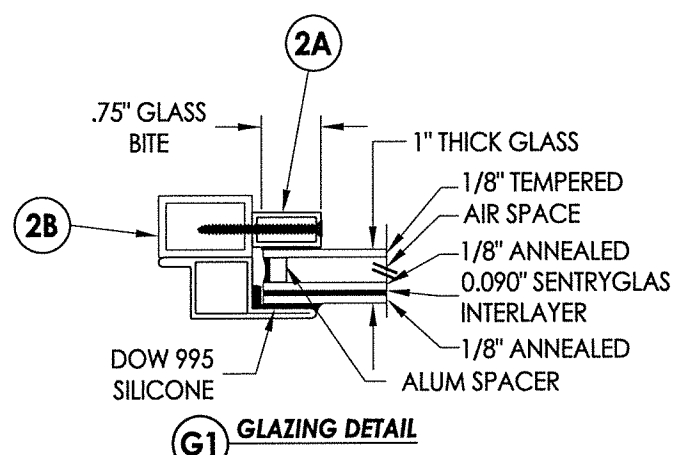
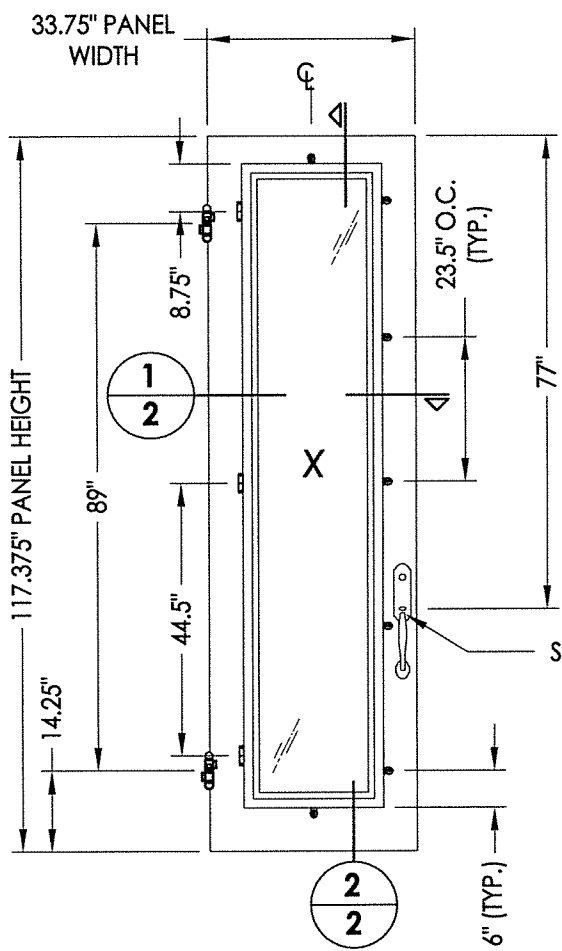
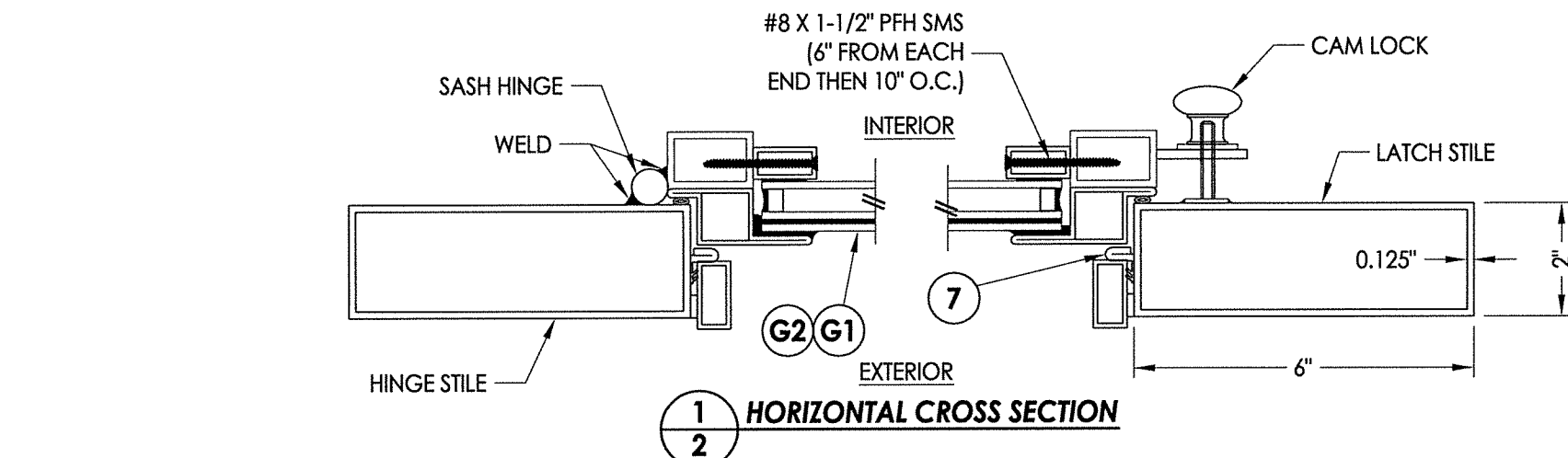
SCALE: N.T.S.

DWG. BY: JK

CHK. BY: LFS

DRAWING NO.: TX-4607

SHEET 1 OF 8



HARDWARE TABLE	
MANUFACTURER	MODEL
WESTIN	HANDLESET (F2)
BALDWIN	HANDLESET (ESTATE SERIES)

Documents Prepared By: Lyndon F. Schmidt, P.E.
TEXAS P.E. #104123

RW BUILDING CONSULTANTS, INC.
P.O. Box 230 Valrico FL 33595
Phone No.: 813.659.9197

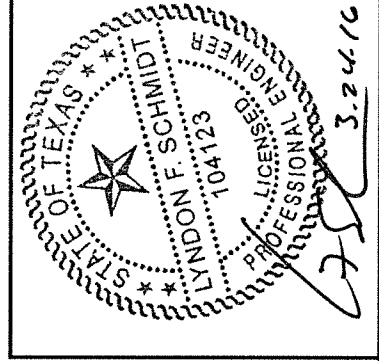
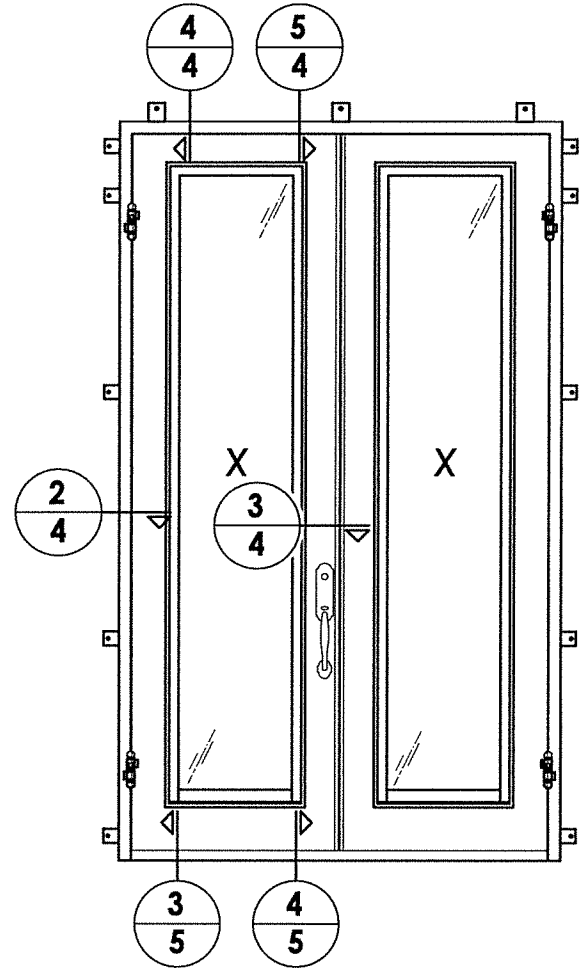
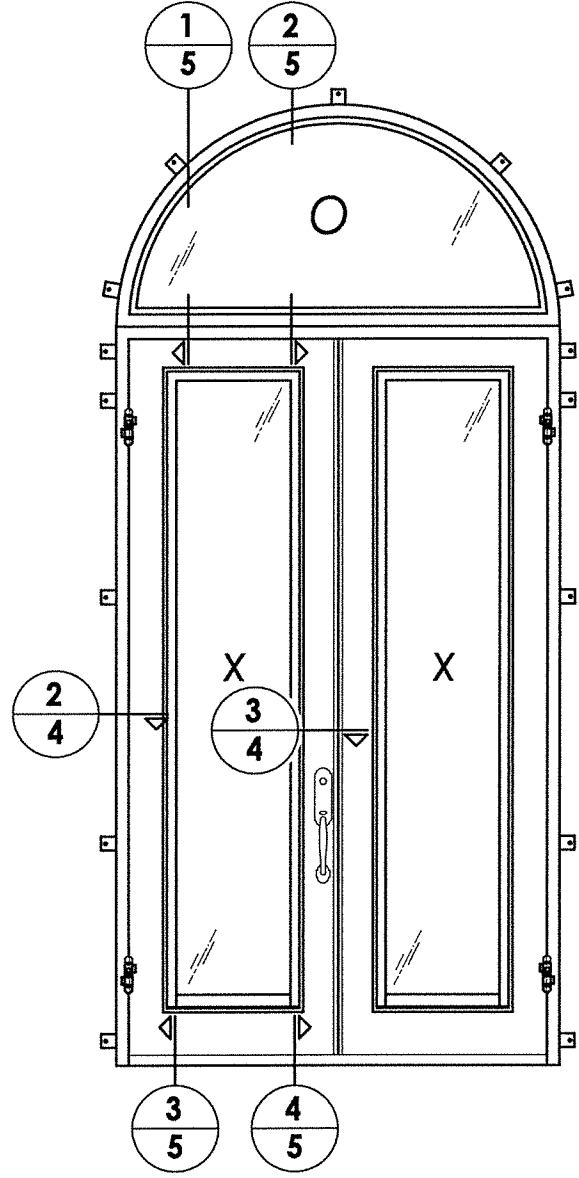
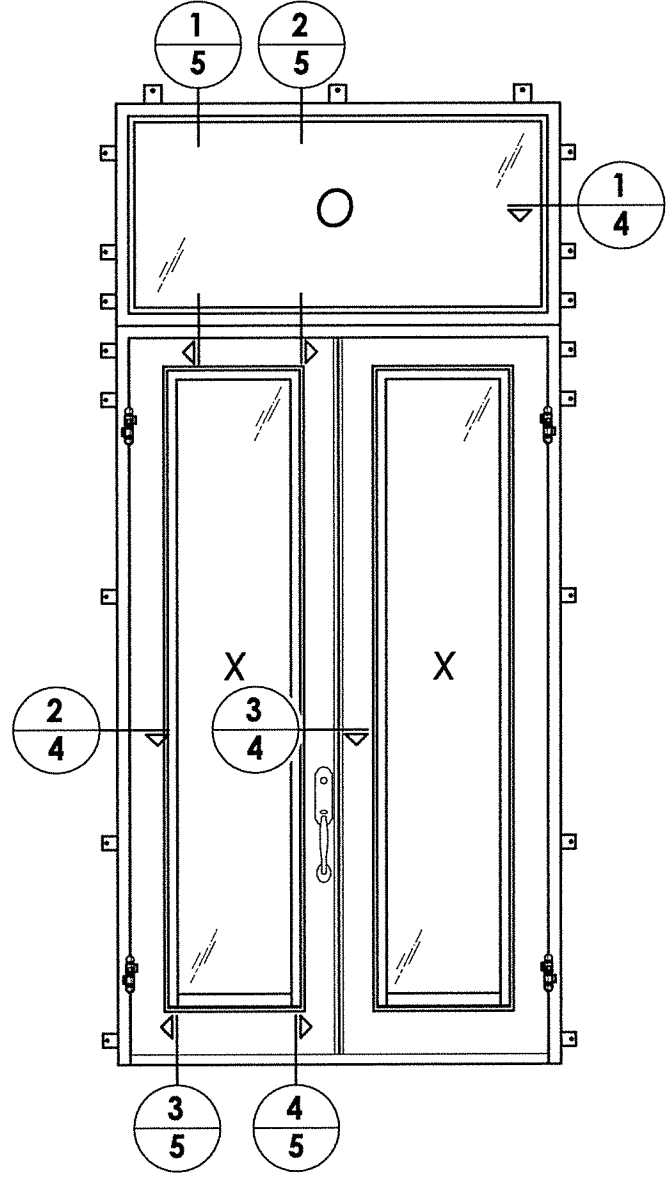
TEXAS BOARD OF PROFESSIONAL ENGINEERS
CERTIFICATE OF REGISTRATION # F-11852

PRODUCT: FLORIDA IRON DOORS

PART OR ASSEMBLY: DOOR PANEL DETAILS & GLAZING DETAILS

REVISIONS		
NO.	DATE	BY

DATE: 3/23/16
SCALE: N.T.S.
DWG. BY: JK
CHK. BY: LFS
DRAWING NO.: TX-4607
SHEET 2 OF 8



Documents Prepared By: Lyndon F. Schmidt, P.E.
TEXAS P.E. #104123

RW BUILDING CONSULTANTS, INC.
P.O. Box 230 Valrico FL 33595
Phone No.: 813.659.9197

TEXAS BOARD OF PROFESSIONAL ENGINEERS
CERTIFICATE OF REGISTRATION # F-11852

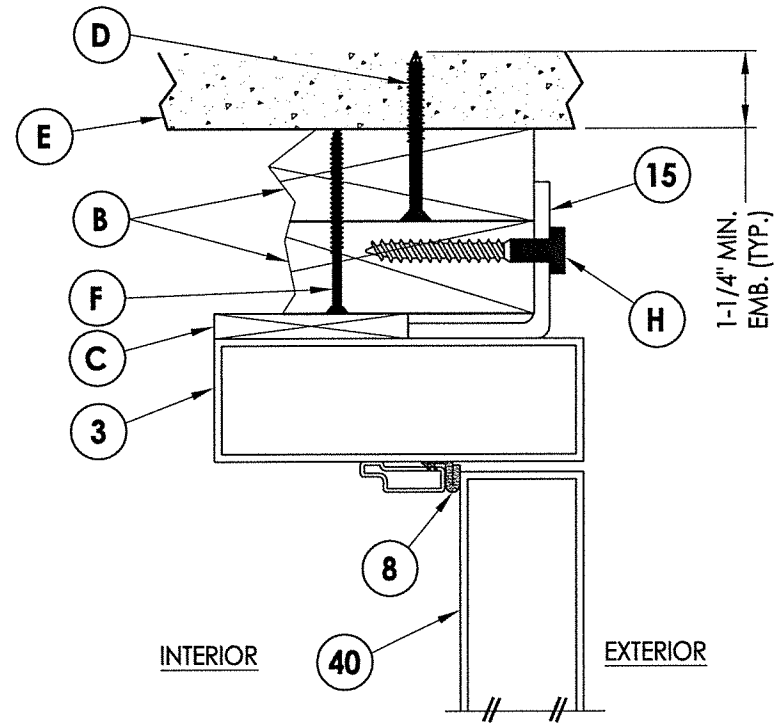
PRODUCT: FLORIDA IRON DOORS

PART OR ASSEMBLY: ELEVATIONS

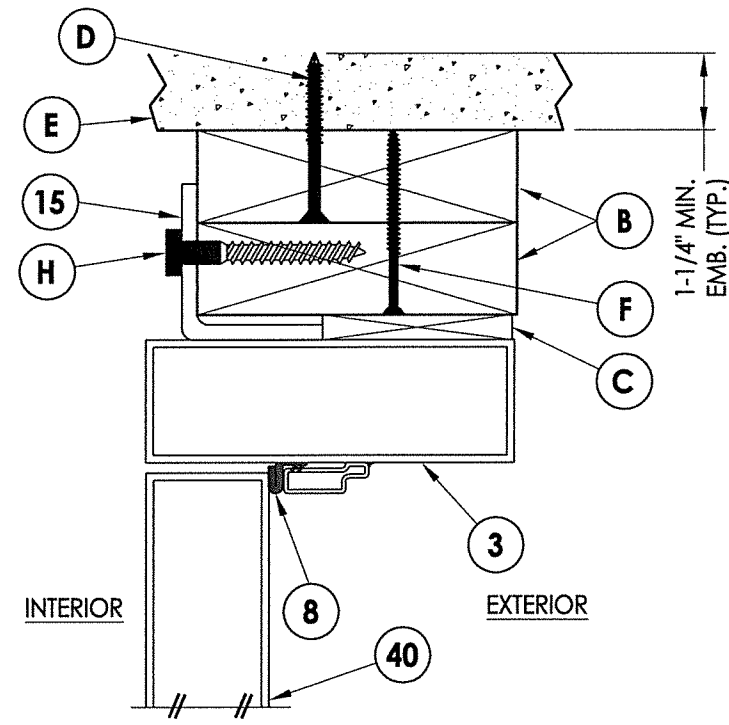
NO.	DATE	REVISIONS	BY

DATE: 3/23/16
SCALE: N.T.S.
DWG. BY: JK
CHK. BY: LFS
DRAWING NO.: TX-4607
SHEET 3 OF 8

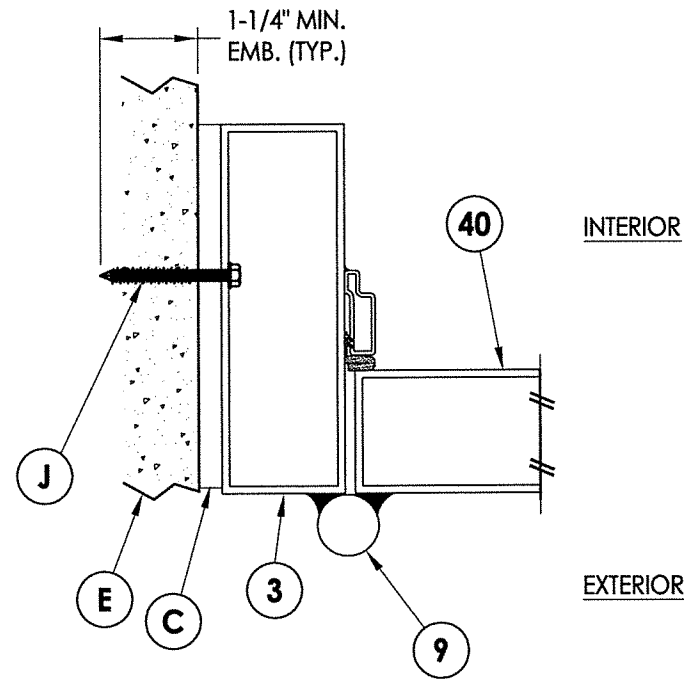
R:\Clients\Florida Iron Doors PermanentVA - Florida Product Approvals\FL-18588\C - Drawings\Current\TX-4604-7.dwg, 4.4



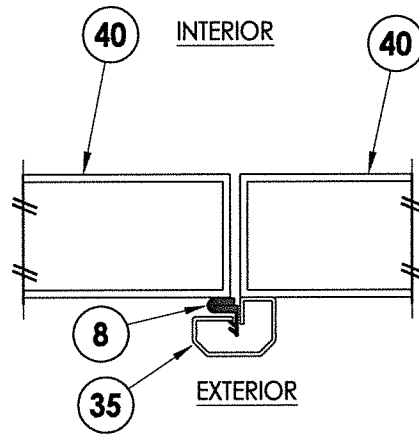
4 VERTICAL CROSS SECTION
4 Outswing



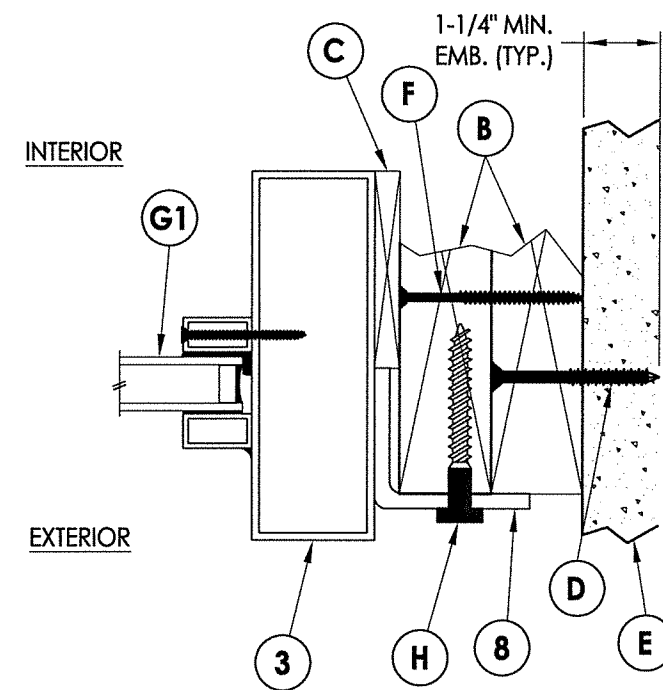
5 VERTICAL CROSS SECTION
4 Inswing



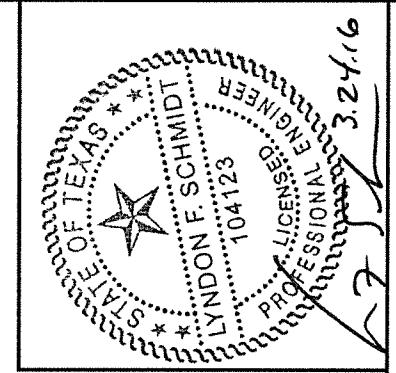
2 HORIZONTAL CROSS SECTION
4 Outswing Shown (Inswing Similar)
 Direct to Masonry Anchoring



3 HORIZONTAL CROSS SECTION
4 Outswing Shown (Inswing Similar)



1 HORIZONTAL CROSS SECTION
4 Outswing Shown (Inswing Similar)



Documents Prepared By: Lyndon F. Schmidt, P.E.
 TEXAS P.E. #104123

RW BUILDING CONSULTANTS, INC.
 P.O. Box 230 Vairico FL. 33595
 Phone No.: 813.659.9197

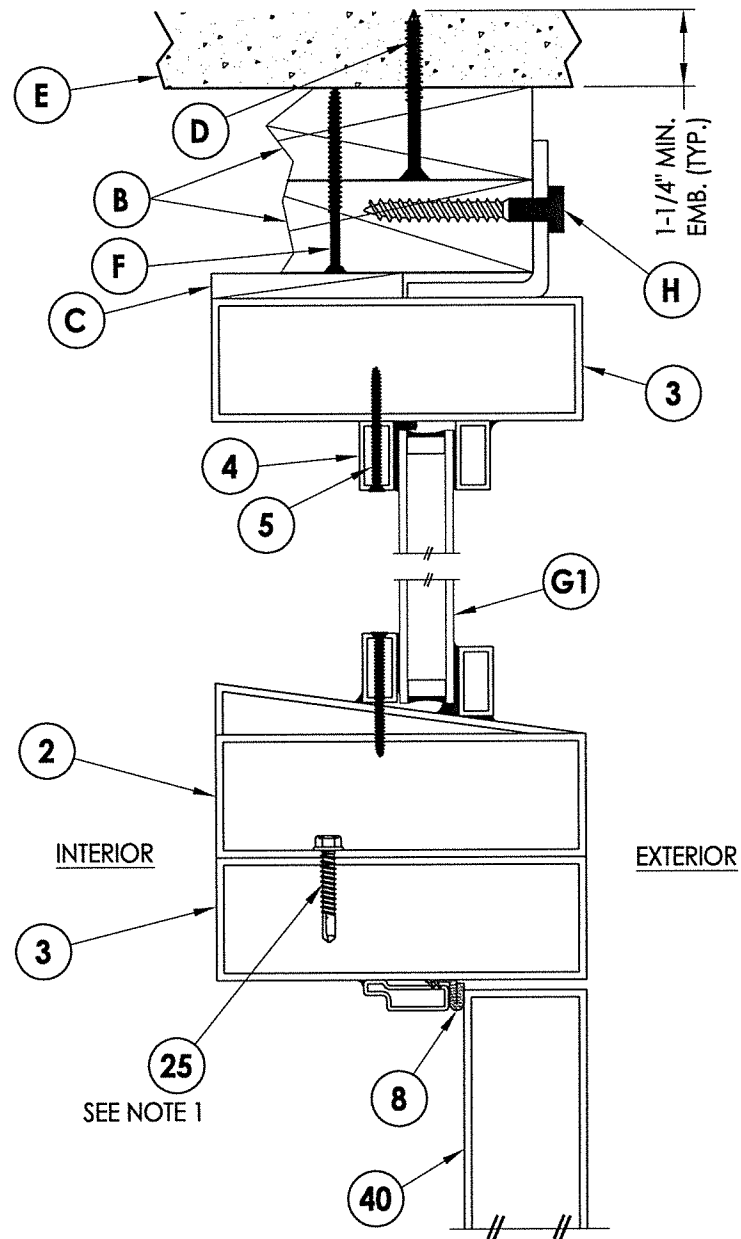
TEXAS BOARD OF PROFESSIONAL ENGINEERS
 CERTIFICATE OF REGISTRATION # F-11852

PRODUCT: FLORIDA IRON DOORS

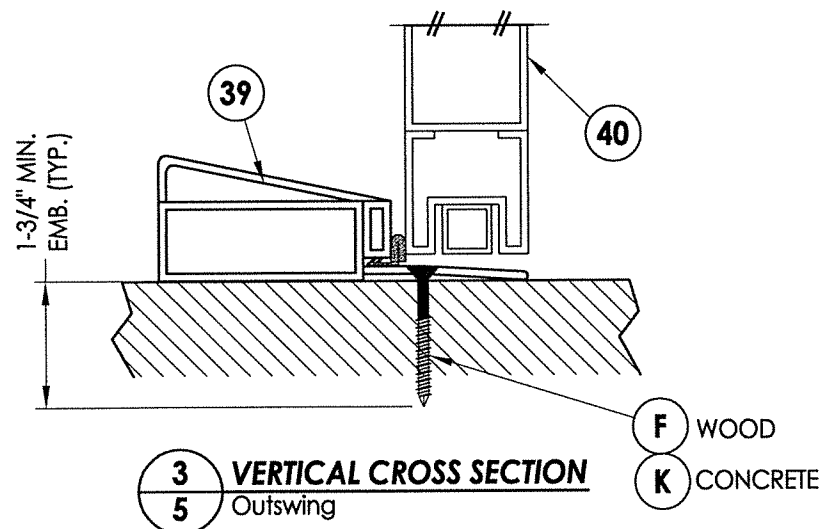
PART OR ASSEMBLY: HORIZONTAL AND VERTICAL CROSS SECTIONS

NO.	DATE	BY

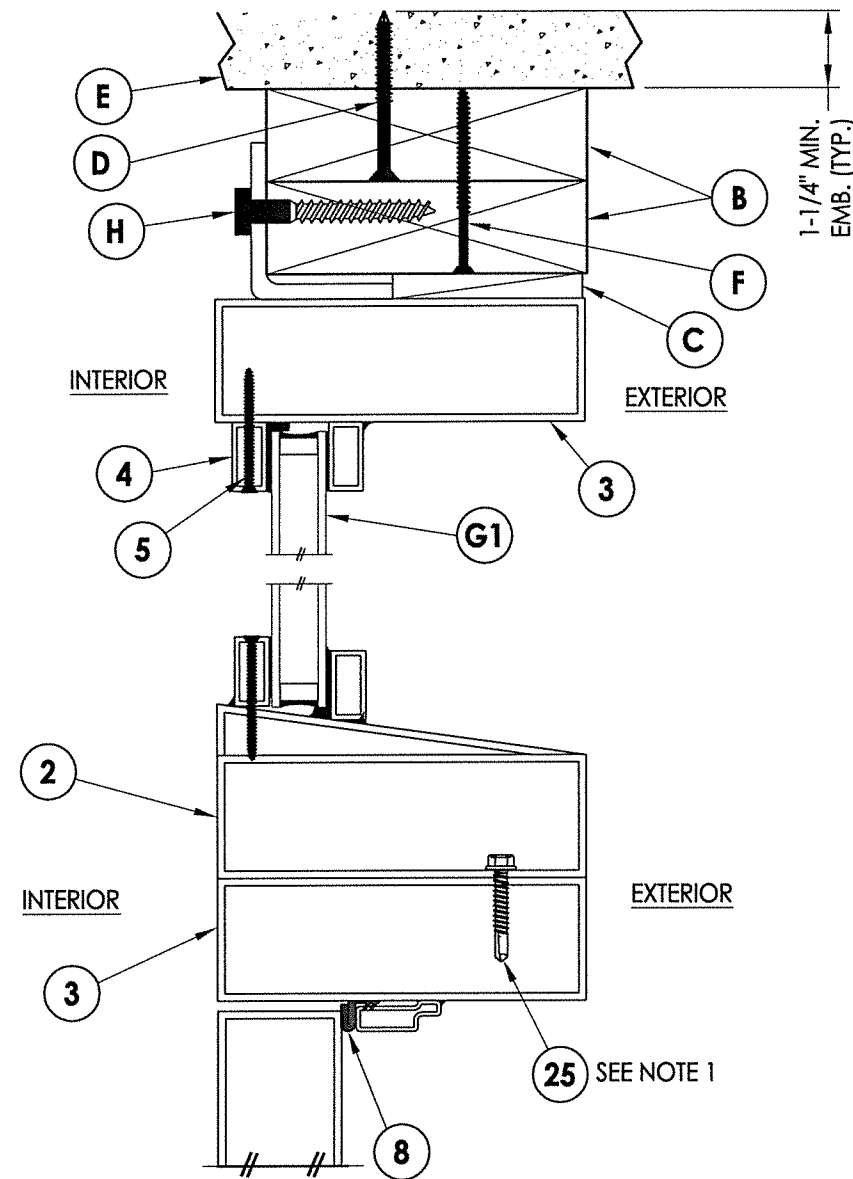
DATE: 3/23/16
 SCALE: N.T.S.
 DWG. BY: JK
 CHK. BY: LFS
 DRAWING NO.: TX-4607
 SHEET 4 OF 8



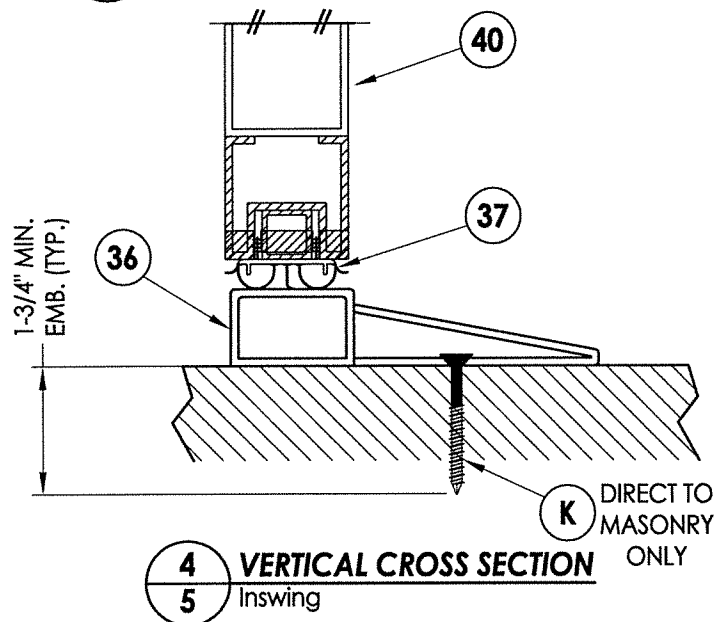
1 VERTICAL CROSS SECTION
5 Outswing



3 VERTICAL CROSS SECTION
5 Outswing

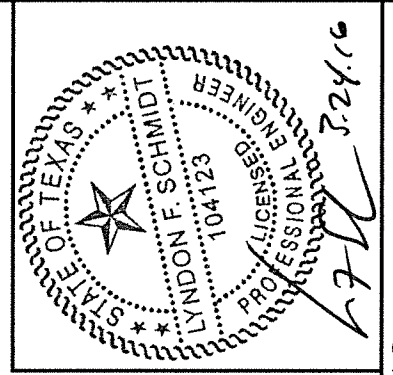


2 VERTICAL CROSS SECTION
5 Inswing



4 VERTICAL CROSS SECTION
5 Inswing

NOTE:
1. Item #35 location: 4" from each and (2) more equally spaced (4 total).



Documents Prepared By: Lyndon F. Schmidt, P.E.
TEXAS P.E. #104123

RW BUILDING CONSULTANTS, INC.
P.O. Box 230 Valrico FL 33595
Phone No.: 813.659.9197

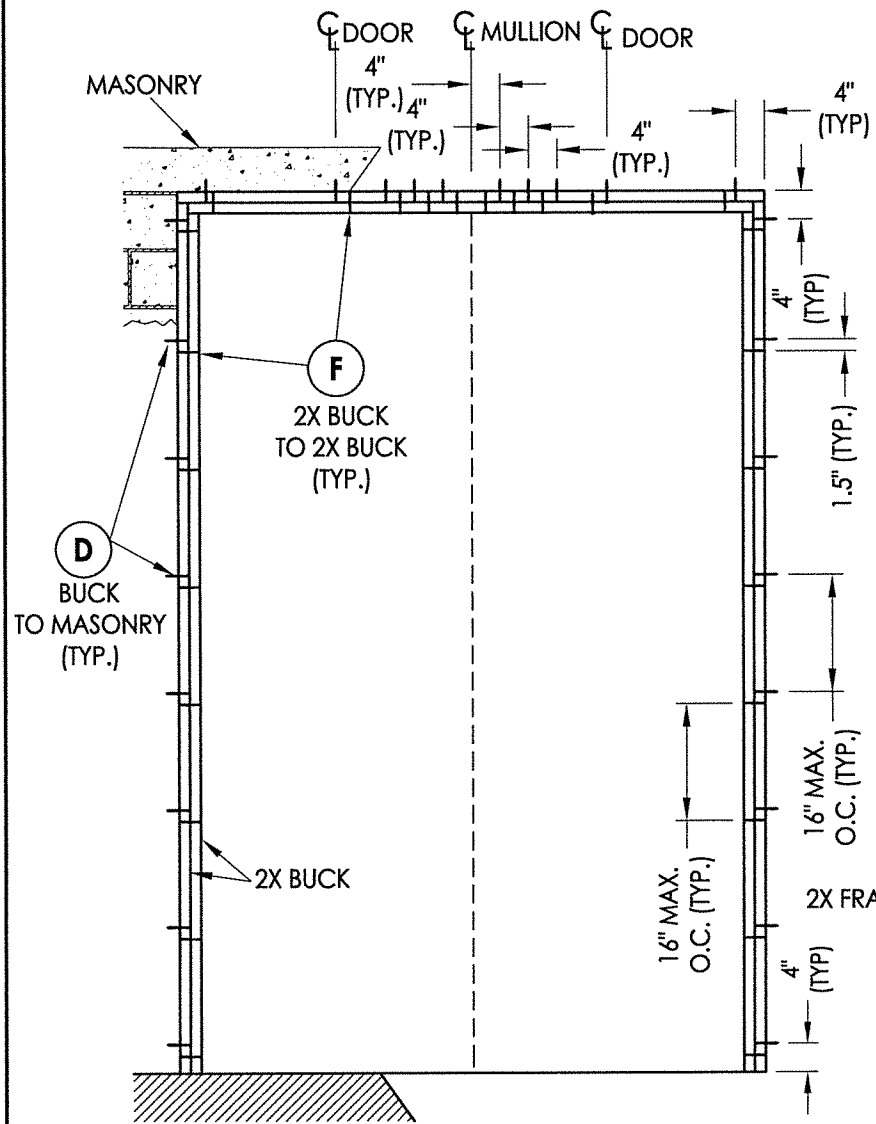
TEXAS BOARD OF PROFESSIONAL ENGINEERS
CERTIFICATE OF REGISTRATION # F-11852

PRODUCT: FLORIDA IRON DOORS
PART OR ASSEMBLY: VERTICAL CROSS SECTIONS

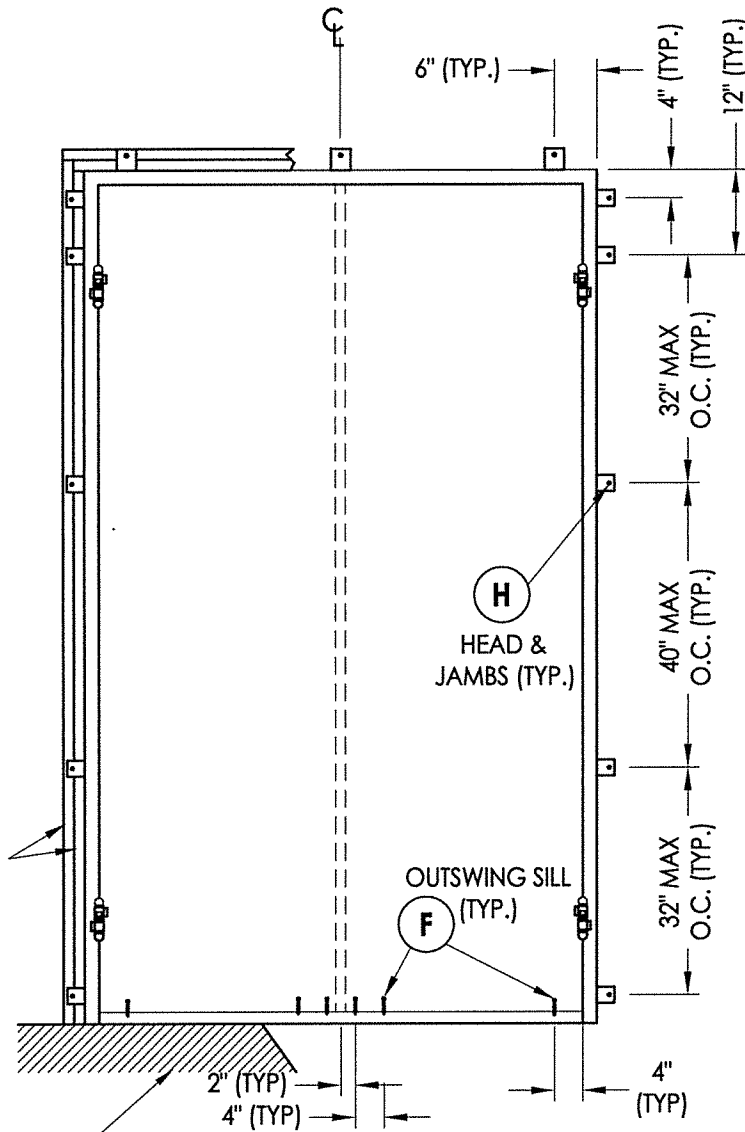
NO.	DATE	BY	REVISIONS

DATE: 3/23/16
SCALE: N.T.S.
DWG. BY: JK
CHK. BY: LFS
DRAWING NO.: TX-4607
SHEET 5 OF 8

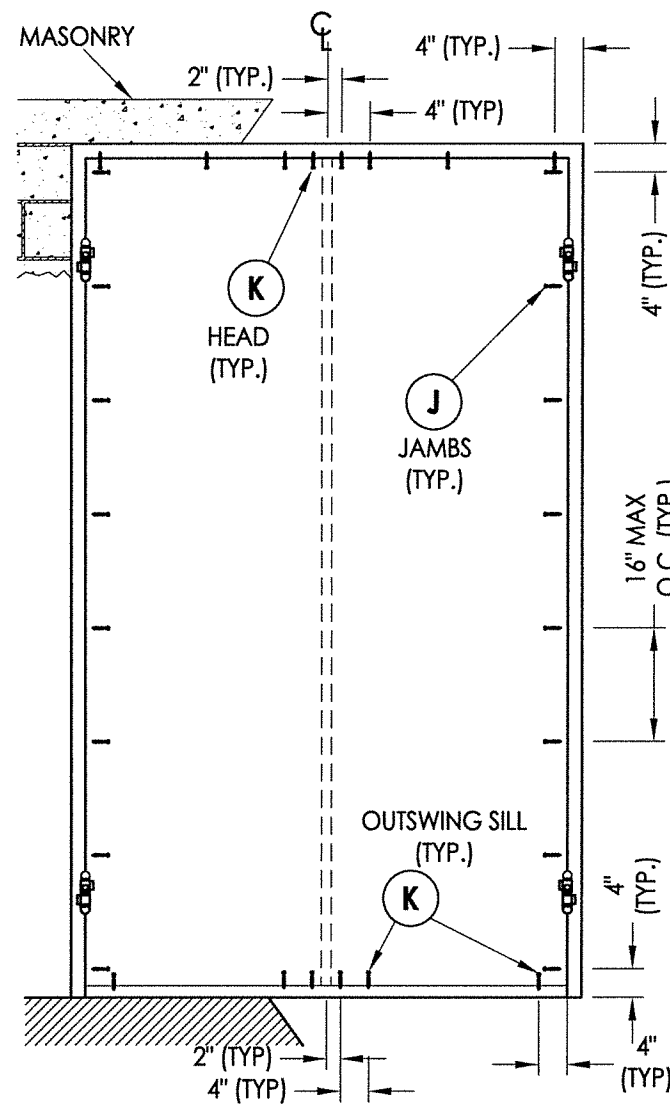
R:\Clients\Florida Iron Doors PERMANENT B - Texas Dept of Ins\TDI - XXX\Drawings\TX-4604-7.dwg, 4:6



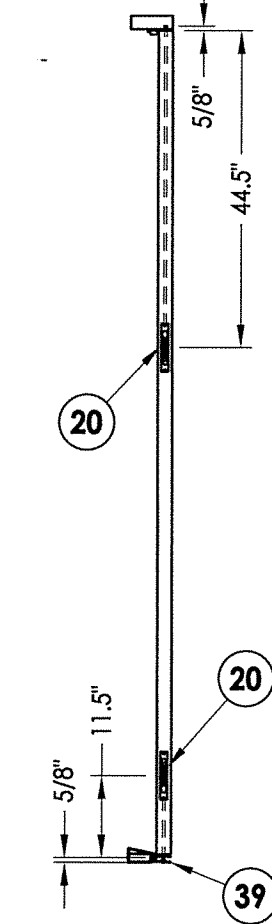
BUCK ANCHORING



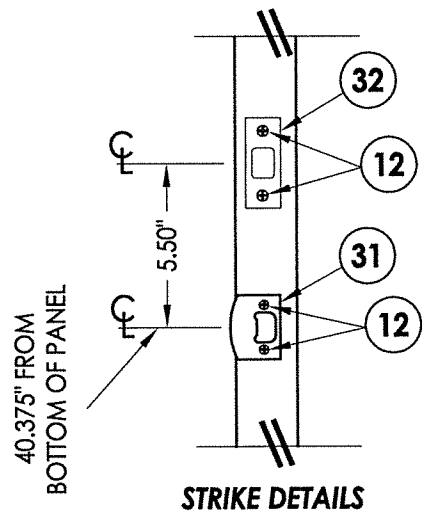
FRAME ANCHORING
Stud Construction



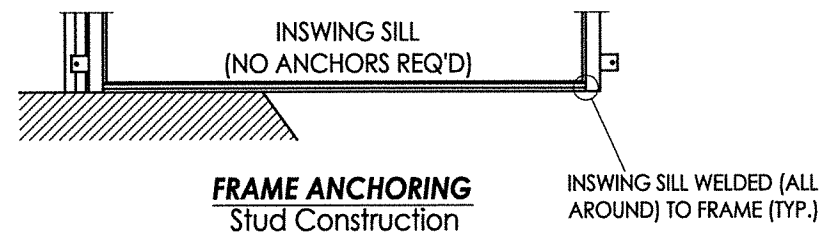
FRAME ANCHORING
Direct to masonry



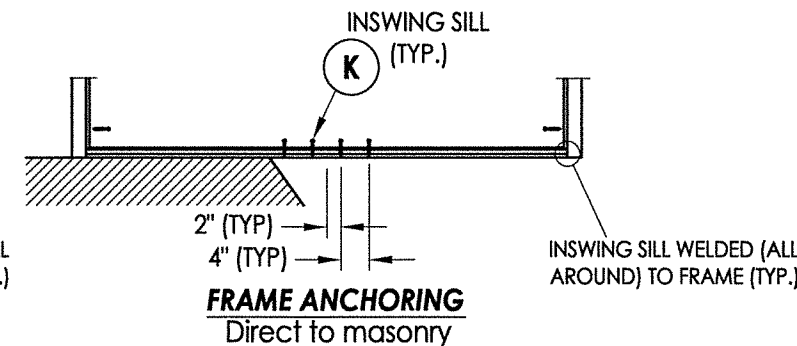
FLIP BOLT DETAILS



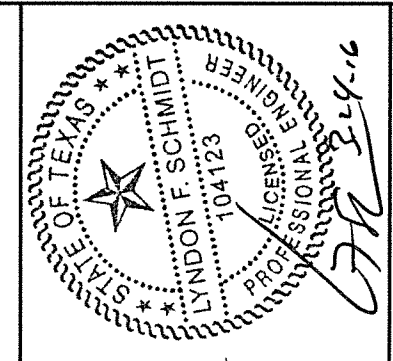
STRIKE DETAILS



FRAME ANCHORING
Stud Construction



FRAME ANCHORING
Direct to masonry



Documents Prepared By: Lyndon F. Schmidt, P.E.
TEXAS P.E. #104123

RW BUILDING CONSULTANTS, INC.
P.O. Box 230 Valrico FL 33595
Phone No.: 813.659.9197
TEXAS BOARD OF PROFESSIONAL ENGINEERS
CERTIFICATE OF REGISTRATION # F-11852

PRODUCT: FLORIDA IRON DOORS
PART OR ASSEMBLY: BUCK & FRAME ANCHORING (XX)

NO.	DATE	BY	REVISIONS

DATE: 3/23/16

SCALE: N.T.S.

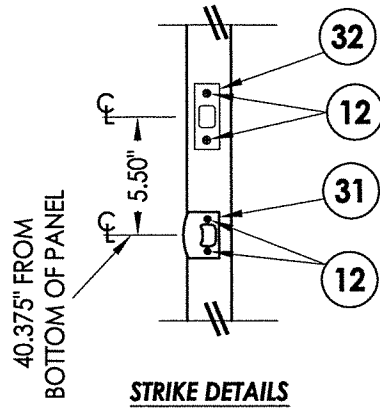
DWG. BY: JK

CHK. BY: LFS

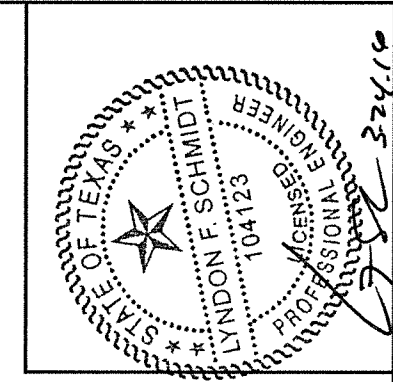
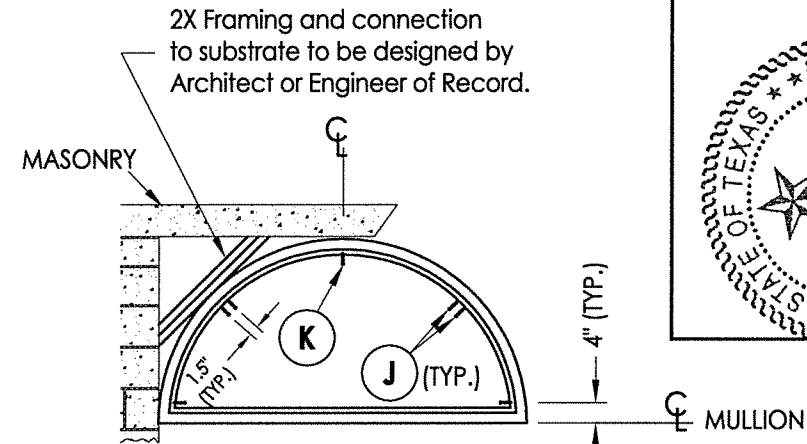
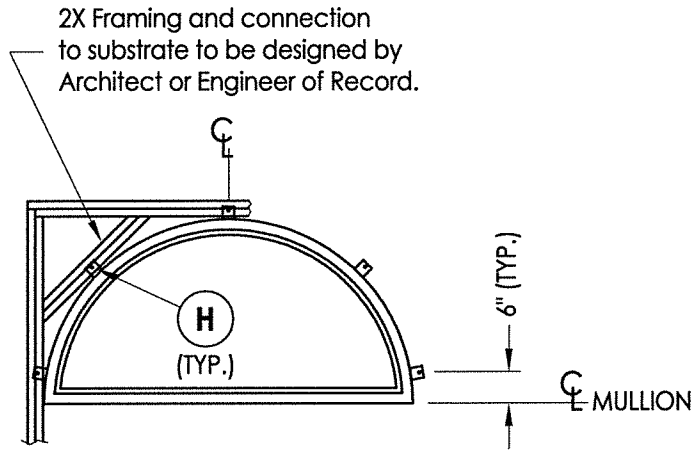
DRAWING NO.:

TX-4607

SHEET 6 OF 8



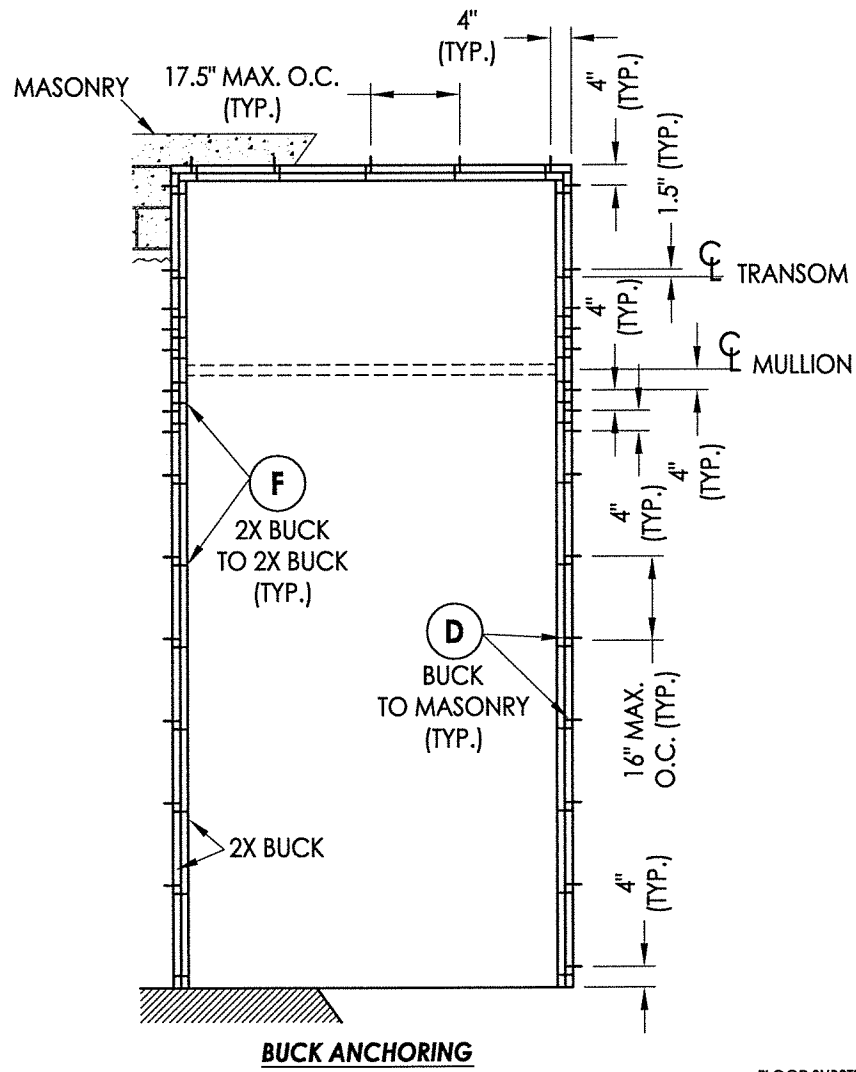
STRIKE DETAILS



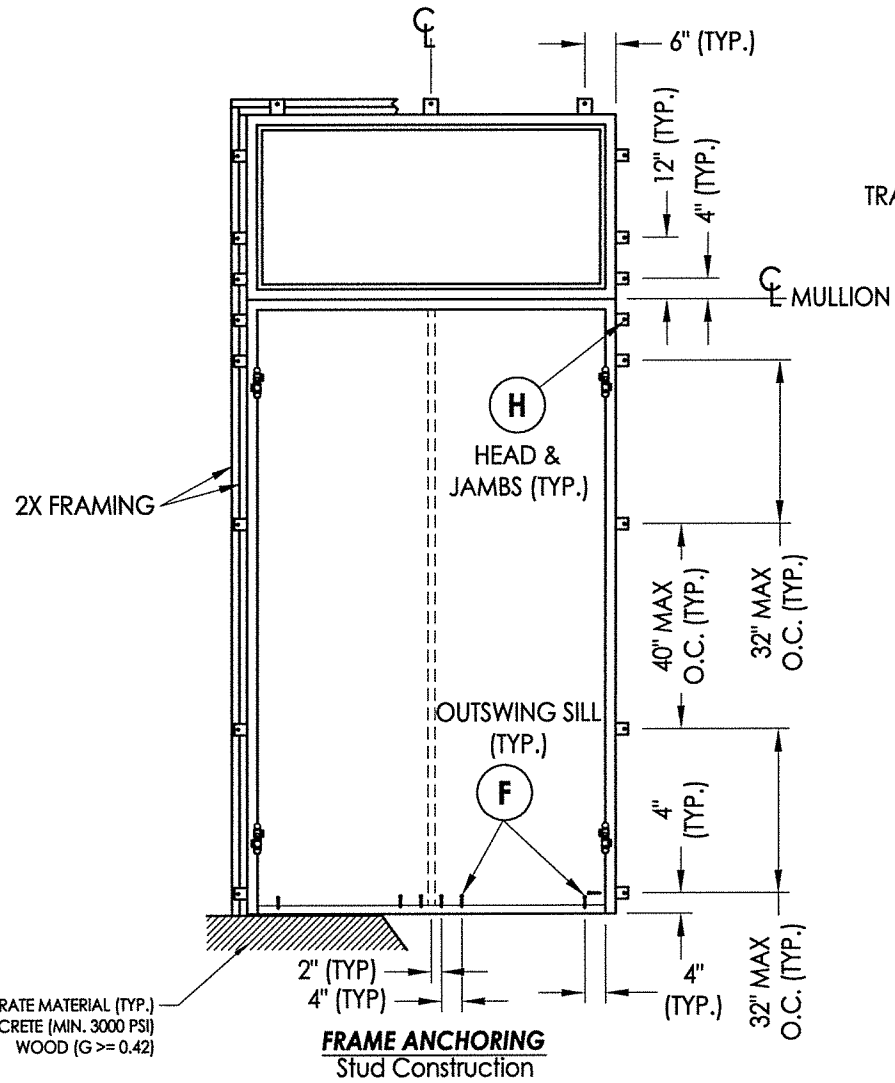
Documents Prepared By: Lyndon F. Schmidt, P.E.
TEXAS P.E. #104123

RW BUILDING CONSULTANTS, INC.
P.O. Box 230 Vairico FL 33595
Phone No.: 813.659.9197

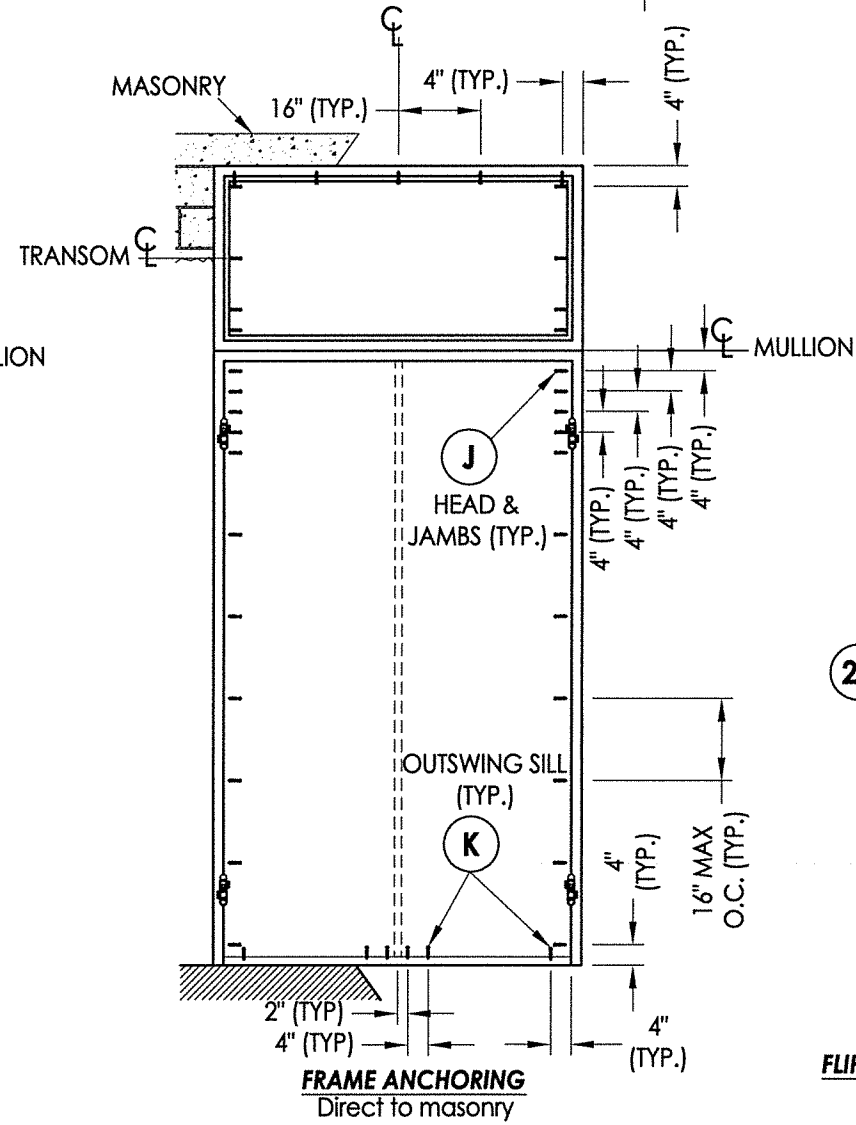
TEXAS BOARD OF PROFESSIONAL ENGINEERS
CERTIFICATE OF REGISTRATION # F-11852



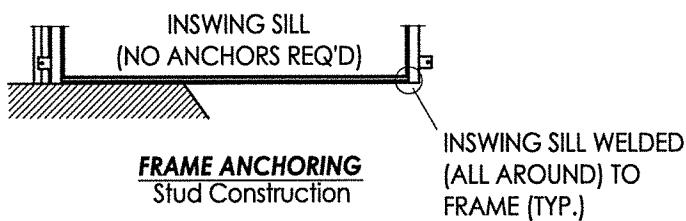
BUCK ANCHORING



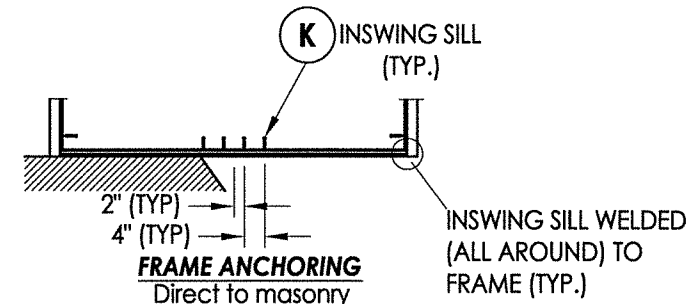
FRAME ANCHORING
Stud Construction



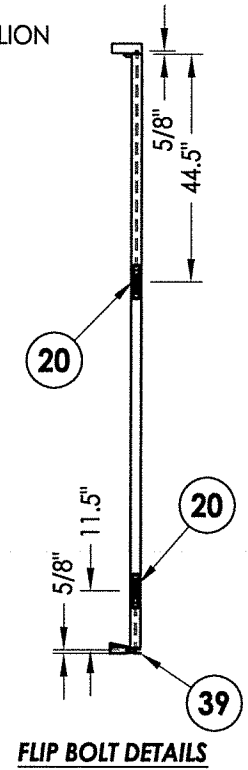
FRAME ANCHORING
Direct to masonry



FRAME ANCHORING
Stud Construction



FRAME ANCHORING
Direct to masonry



FLIP BOLT DETAILS

PRODUCT:	FLORIDA IRON DOORS
PART OR ASSEMBLY:	BUCK & FRAME ANCHORING (O/XX)

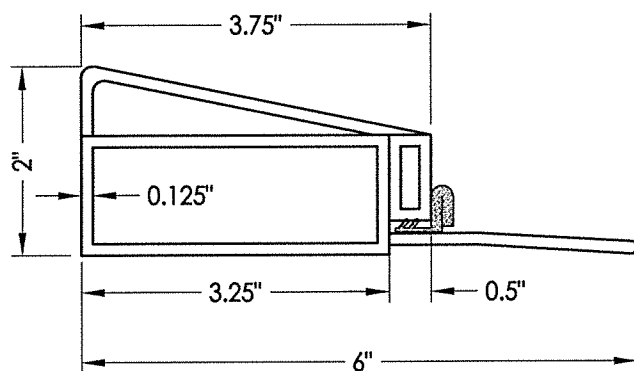
NO.	DATE	BY	REVISIONS

DATE:	3/23/16
SCALE:	N.T.S.
DWG. BY:	JK
CHK. BY:	LFS
DRAWING NO.:	TX-4607
SHEET	7 OF 8

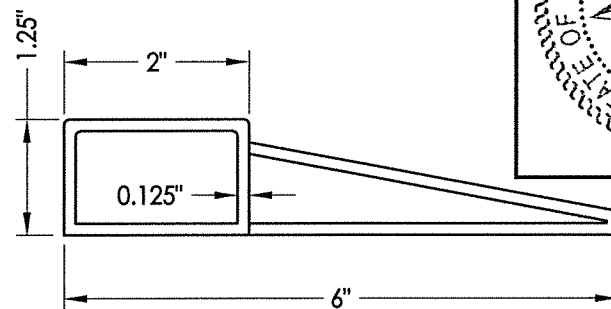
BILL OF MATERIALS

ITEM #	DESCRIPTION	MATERIAL
B	2X BUCK/FRAMING (SG >= 0.42)	WOOD
C	3/8" MAX. SHIM SPACE	-
D	1/4" X 2-3/4" PFH ELCO OR ITW CONCRETE SCREW	STEEL
E	MASONRY - 3,000 PSI MIN. CONCRETE CONFORMING TO ACI301 OR HOLLOW BLOCK CONFORMING TO ASTM C90	CONCRETE
F	#10 X 3" PFH WOOD SCREW (1-1/2" MIN. EMBEDMENT)	STEEL
H	3/8" X 3" HWH LAG SCREW (2-1/2" MIN. EMBEDMENT)	STEEL
J	1/4" X 2-1/4" HWH ELCO OR ITW CONCRETE SCREW (1-1/4" MIN. EMBEDMENT)	STEEL
K	1/4" X 2-1/4" HWH ITW CONCRETE SCREW (1-3/4" MIN. EMBEDMENT)	STEEL
2	TRANSOM SILL	STEEL
3	FRAME	STEEL
4	GLAZING BEAD	STEEL
5	#8 X 1-1/4" PFH SELF-DRILLING SMS	STEEL
7	WEATHERSTRIP GASKET (.5")	FOAM
8	WEATHERSTRIP GASKET (.67")	FOAM
9	DOOR HINGE	STEEL
12	#8 X 3/4" PFH SELF-DRILLING SMS	STEEL
15	ANCHORING BRACKET	STEEL
20	FLIP BOLT	-
25	#10 X 1-1/2" HWH SELF-DRILLING SMS	STEEL
31	LATCH STRIKE PLATE	STEEL
32	DEADBOLT STRIKE PLATE	STEEL
35	ASTRAGAL	STEEL
36	THRESHOLD	STEEL
37	DOOR SWEEP	PVC
39	THRESHOLD	STEEL
40	DOOR PANEL	STEEL

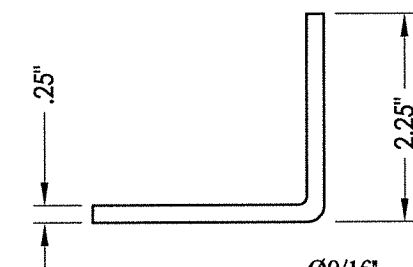
All Door Component Steel: ASTM A36



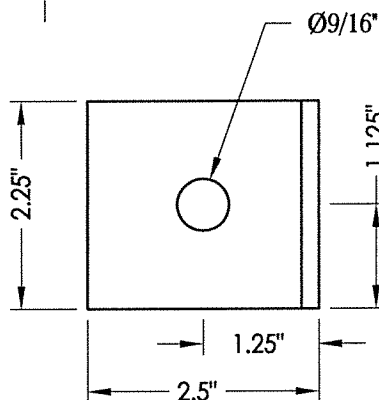
39 THRESHOLD
Outswing



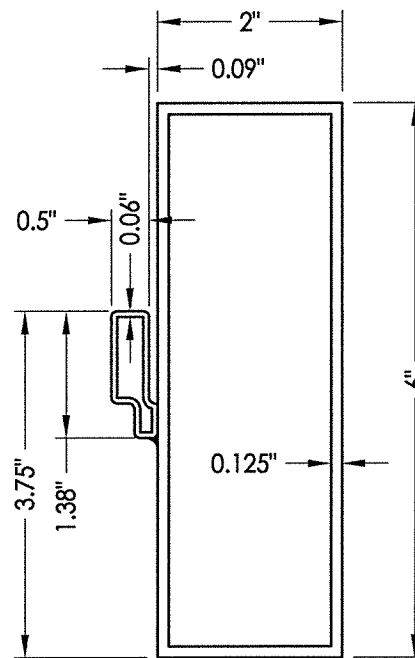
36 THRESHOLD
Inswing



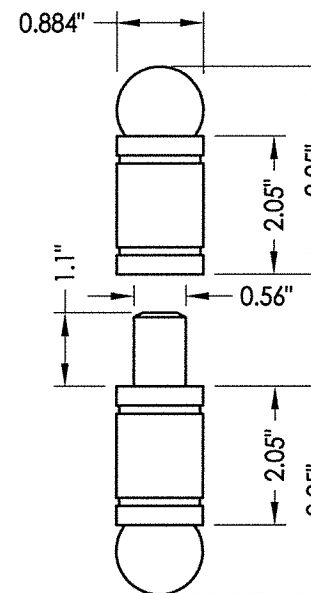
15 ANCHORING BRACKET



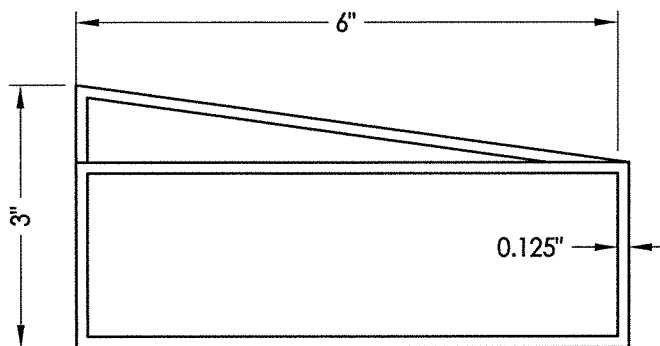
35 ASTRAGAL



3 FRAME



9 HINGE



2 TRANSOM SILL

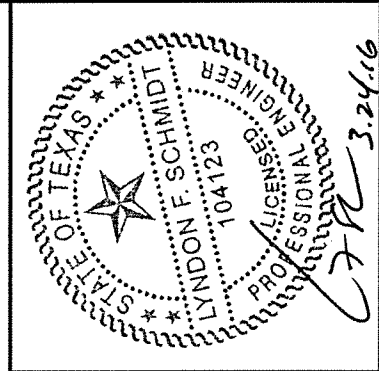
CONCRETE ANCHOR NOTES:

- Concrete anchor locations at the corners may be adjusted to maintain the min. edge distance to mortar joints.
- Concrete anchor locations noted as "MAX. ON CENTER" must be adjusted to maintain the min. edge distance to mortar joints, additional concrete anchors may be required to ensure the "MAX. ON CENTER" dimension are not exceeded.
- Concrete anchor table:

ANCHOR TYPE	ANCHOR SIZE	MIN. EMBEDMENT	MIN. CLEARANCE TO MASONRY EDGE	MIN. CLEARANCE TO ADJACENT ANCHOR
ITW TAPCON®	1/4"	1-1/4" (JAMBS) 1-3/4" (HEAD/SILL)	2-1/2"	4"
ELCO ULTRACON®	1/4"	1-1/4" (JAMBS) 1-3/4" (HEAD/SILL)	2-1/2"	4"

WOOD SCREW INSTALLATION NOTES:

- Maintain a minimum 5/8" edge distance, 1" end distance, & 1" o.c. spacing of wood screws to prevent the splitting of wood.



Documents Prepared By: Lyndon F. Schmidt, P.E.
TEXAS P.E. #104123

RW BUILDING CONSULTANTS, INC.
P.O. Box 230 Valrico FL 33595
Phone No.: 813.659.9197

TEXAS BOARD OF PROFESSIONAL ENGINEERS
CERTIFICATE OF REGISTRATION # F-11852

PRODUCT: FLORIDA IRON DOORS

PART OR ASSEMBLY: BILL OF MATERIALS & COMPONENTS

NO.	DATE	BY	REVISIONS

DATE: 3/23/16

SCALE: N.T.S.

DWG. BY: JK

CHK. BY: LFS

DRAWING NO.: TX-4607

SHEET 8 OF 8