



By **R3Composites**  
 14123 Roth Road  
 Grabill, IN 46741

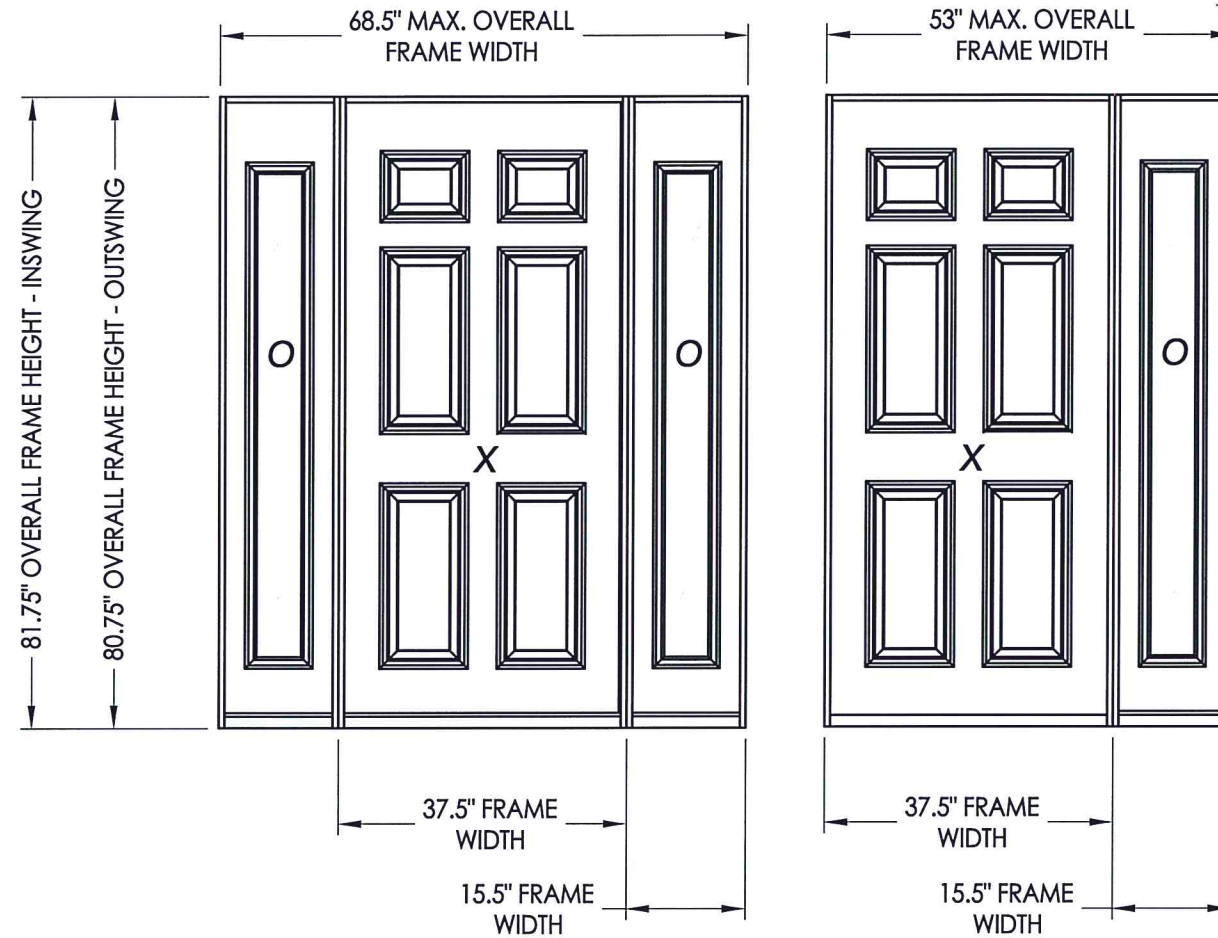
## Nicolette Fiberglass Door INSWING "NON-IMPACT"

### EVALUATED FOR USE IN THE STATE OF TEXAS

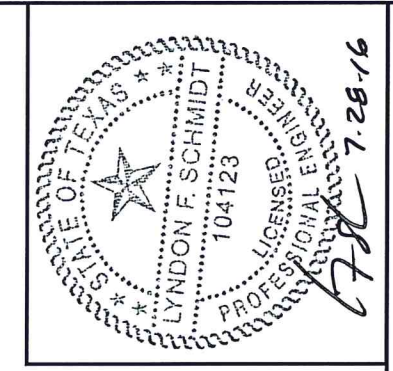
The Fiberglass Door described herein complies with the 2006 International Residential Code (IRC), Sections R301 & R613 and the 2006 International Building Code (IBC), Sections 1405.12, 1609, 1714.5, 2403 and 2404 (including Texas revisions) subject to the following conditions:

1. Anchors shall be as listed and spaced as shown in the details. Anchor embedment to base material shall be beyond wall dressing or stucco.
2. When used in areas requiring wind-borne debris protection this product is required to be protected with an impact resistant covering that complies with Section R301.2.1.2 of the IRC and Section 1609.1.2 of the IBC.
3. Allowable design pressure requirements must be equal to or less than the design pressure rating shown in the design pressure chart, sheet 1 of this drawing.
4. Conditions not covered by this drawing are subject to further engineering analysis.

TABLE OF CONTENTS	
SHEET#	DESCRIPTION
1	Typical elevations, design pressures & general notes
2	Door panel details
3	Sidelite panel details and glazing detail
4	Elevations
5	Horizontal cross sections
6	Vertical cross sections
7	Frame anchoring
8	Bill of materials and components



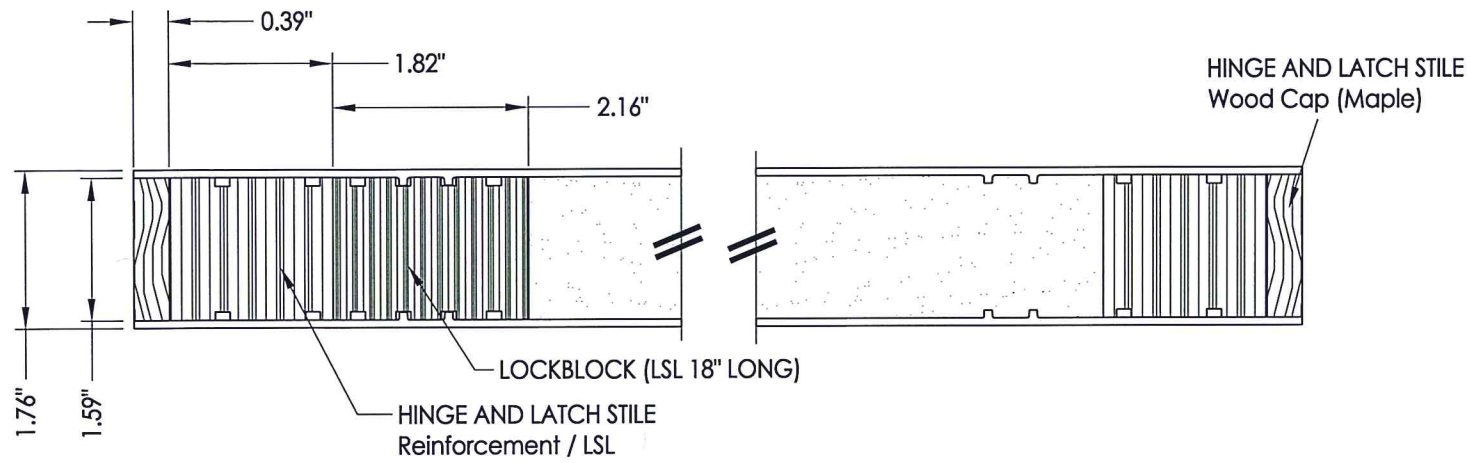
CONFIGURATION	MAX. FRAME DIMENSION	MAX. SIDELITE D.L.O. DIMENSION	DESIGN PRESSURE (PSF) INSWING	
			POSITIVE	NEGATIVE
OX or XO	53.0" x 81.75"	7.06" X 63.06"	+50.0	-60.0
OXO	68.5" x 81.75"	7.06" X 63.06"	+50.0	-60.0



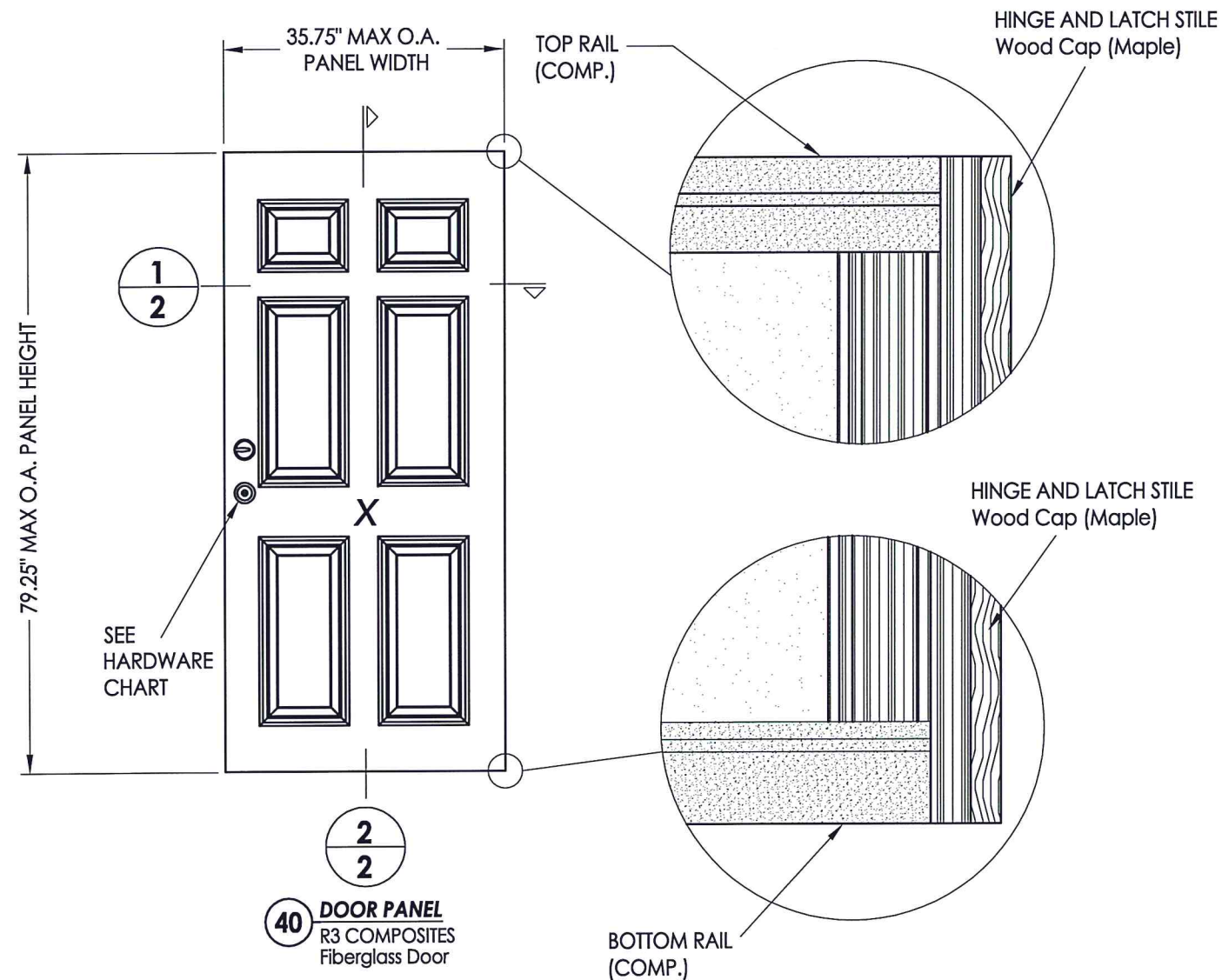
Documents Prepared By:  
 Lyndon F. Schmidt, P.E.  
 TEXAS P.E. #104123  
**RW** BUILDING CONSULTANTS, INC.  
 P.O. Box 230 Valrico FL 33595  
 Phone No.: 813.659.9197  
 TEXAS BOARD OF PROFESSIONAL ENGINEERS  
 CERTIFICATE OF REGISTRATION # F-11852

PRODUCT:	R3 COMPOSITES
PART OR ASSEMBLY:	TYPICAL ELEVATION, DESIGN PRESSURES & GENERAL NOTES
DATE:	7/20/15
SCALE:	N.T.S.
DWG. BY:	JK
CHK. BY:	LFS
DRAWING NO.:	TX-4551
SHEET	1 OF 8



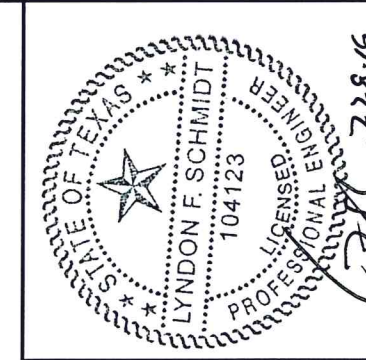


**1**  
**2** HORIZONTAL CROSS SECTION



**40** DOOR PANEL  
R3 COMPOSITES  
Fiberglass Door

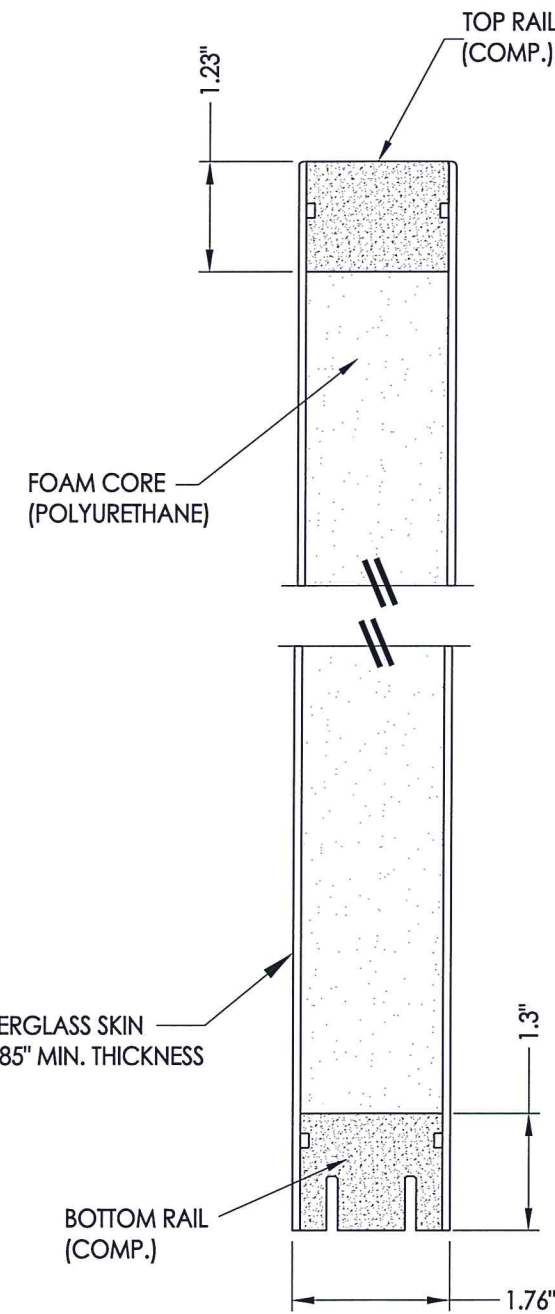
HARDWARE TABLE	
MANUFACTURER	MODEL
KWIKSET	KNOB: SERIES (400)
	DEADBOLT: SERIES (660)
SCHLAGE	KNOB: F51
	DEADBOLT: B60N



Documents Prepared By:  
Lyndon F. Schmidt, P.E.  
TEXAS P.E. #104123

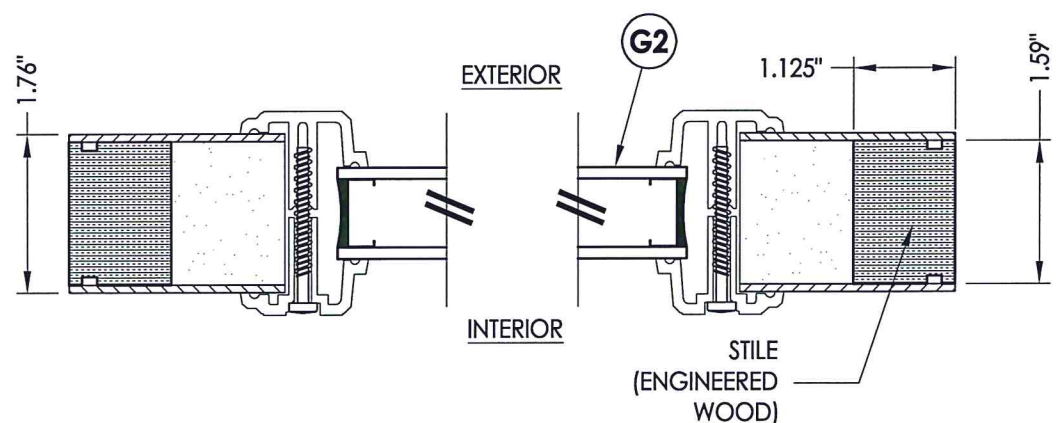
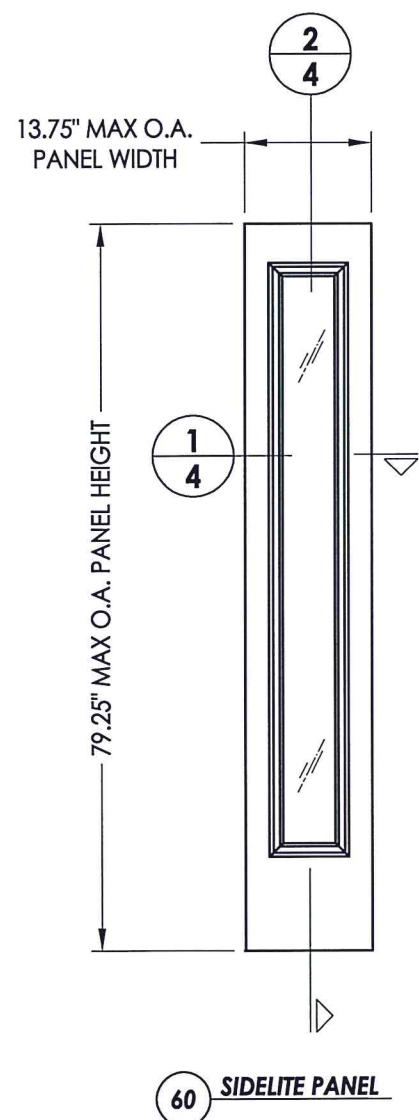
**RW** BUILDING CONSULTANTS, INC.  
P.O. Box 230 Vairco FL, 33595  
Phone No.: 813.659.9197

TEXAS BOARD OF PROFESSIONAL ENGINEERS  
CERTIFICATE OF REGISTRATION # F-11852

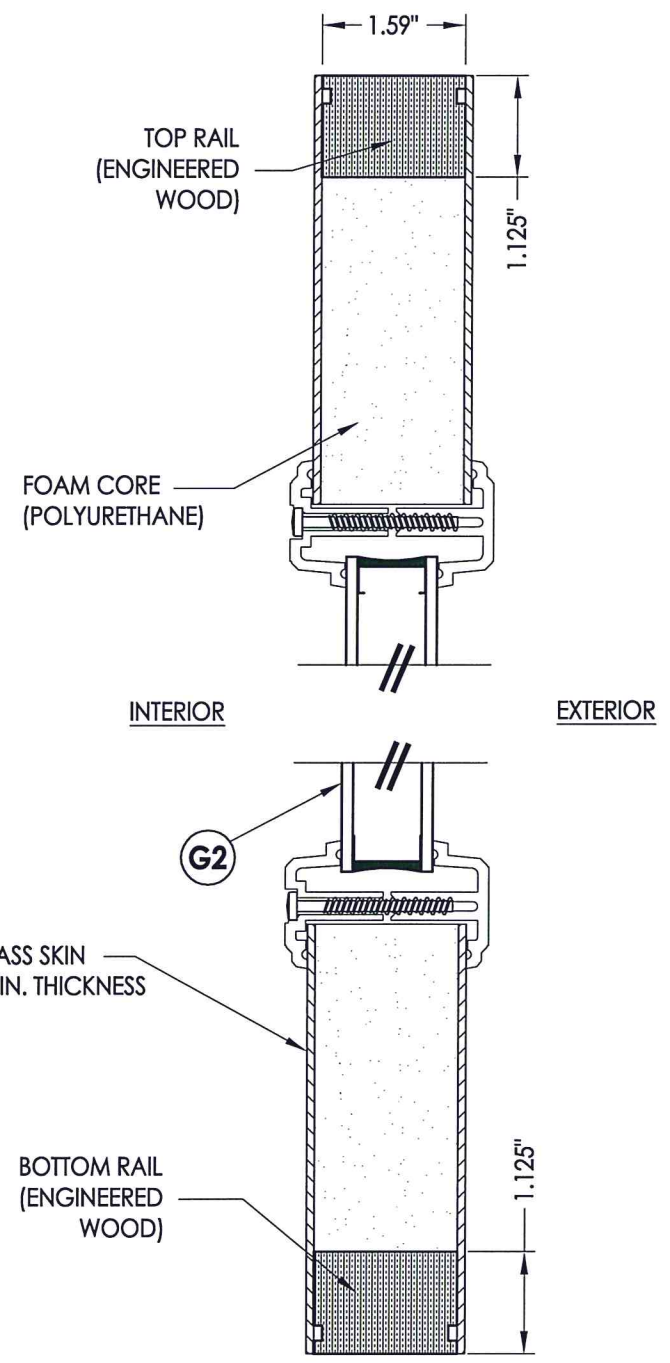
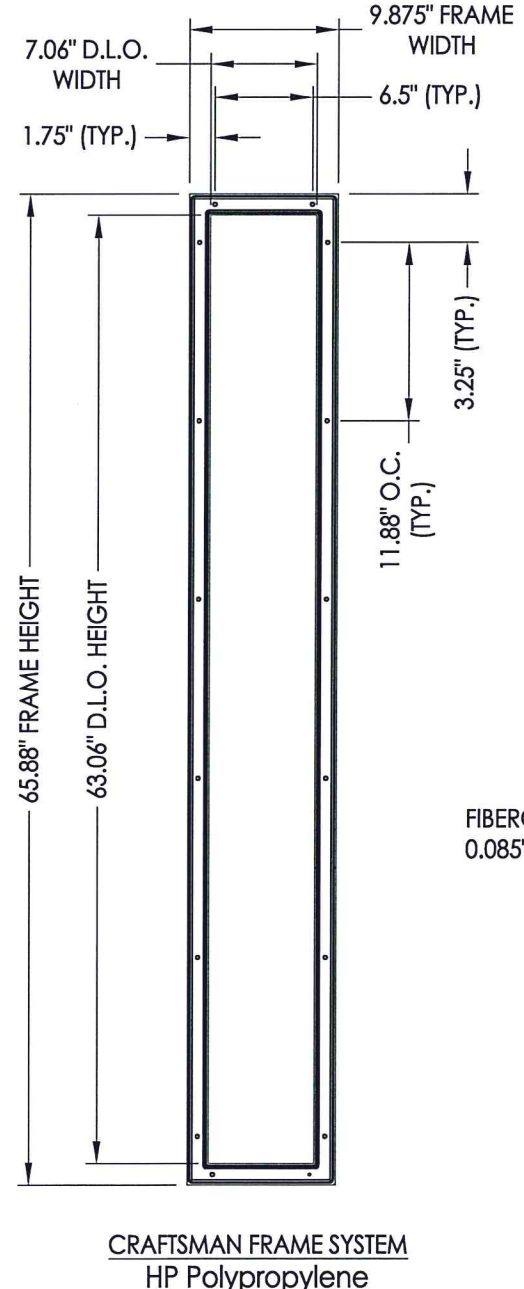
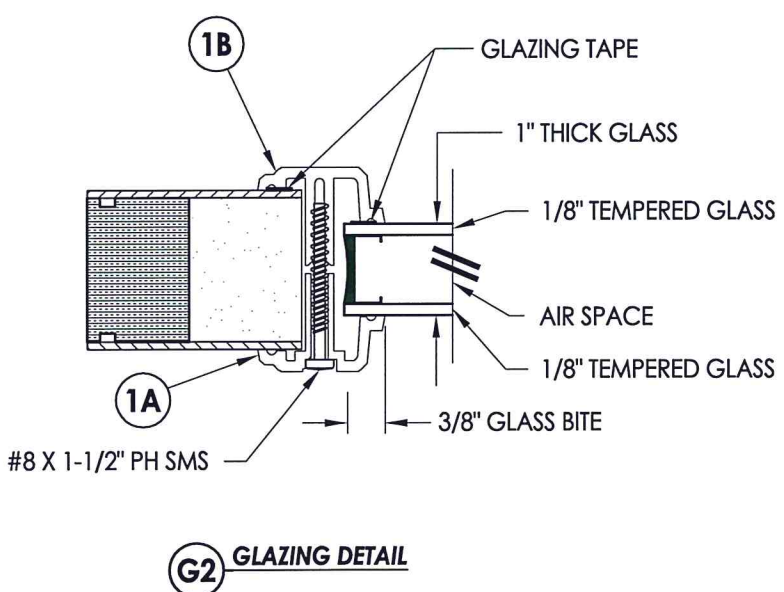
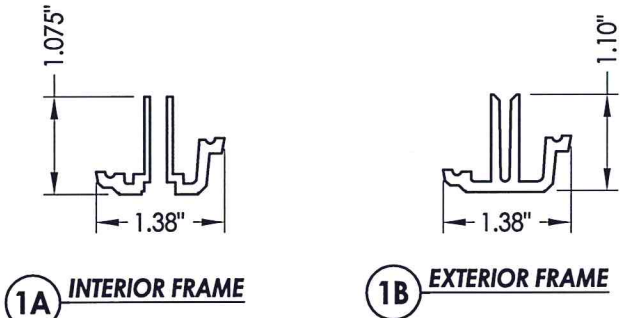


**2**  
**2** VERTICAL CROSS SECTION

PRODUCT:	R3 COMPOSITES	
PART OR ASSEMBLY:	DOOR PANEL DETAILS AND GLAZING DETAIL	
NO.	DATE	BY
REVISIONS		
DATE:	7/20/15	
SCALE:	N.T.S.	
DWG. BY:	JK	
CHK. BY:	LFS	
DRAWING NO.:	TX-4551	
SHEET	2	OF 8



**1 4 HORIZONTAL CROSS SECTION**



**2 4 VERTICAL CROSS SECTION**



Lyndon F. Schmidt, P.E.  
TEXAS P.E. #104123

**RW** BUILDING CONSULTANTS, INC.  
P.O. Box 230 Vairico FL, 33595  
Phone No.: 813.659.9197

TEXAS BOARD OF PROFESSIONAL ENGINEERS  
CERTIFICATE OF REGISTRATION # F-11852

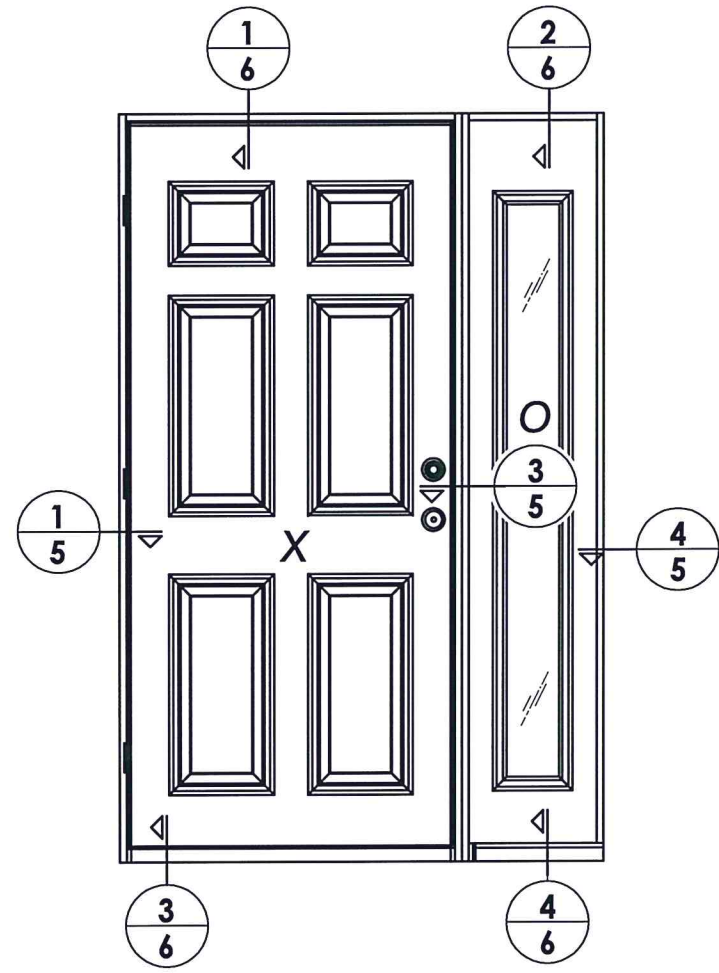
Documents Prepared By:

PRODUCT:	R3 COMPOSITES
PART OR ASSEMBLY:	SIDELITE PANEL DETAILS AND GLAZING DETAIL

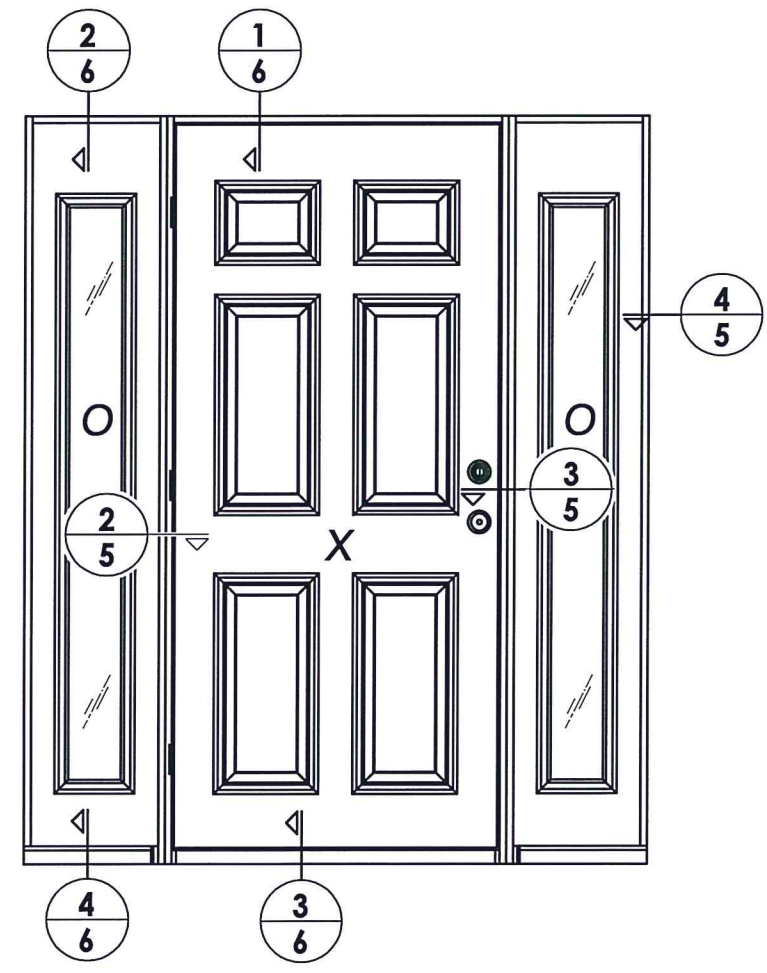
NO.	DATE	BY

DATE:	7/20/15
SCALE:	N.T.S.
DWG. BY:	JK
CHK. BY:	LFS
DRAWING NO.:	TX-4551
SHEET	3 OF 8

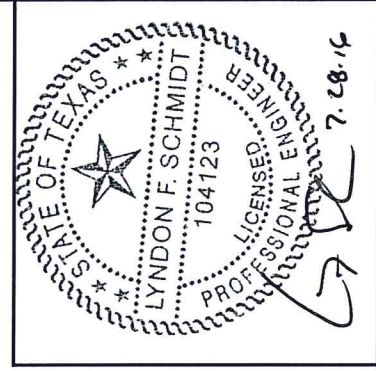




ELEVATION (XO - OX)



ELEVATION (OXO)



Documents Prepared By:  
 Lyndon F. Schmidt, P.E.  
 TEXAS P.E. #104123

**RW** BUILDING CONSULTANTS, INC.  
 P.O. Box 230 Valrico FL. 33595  
 Phone No.: 813.659.9197

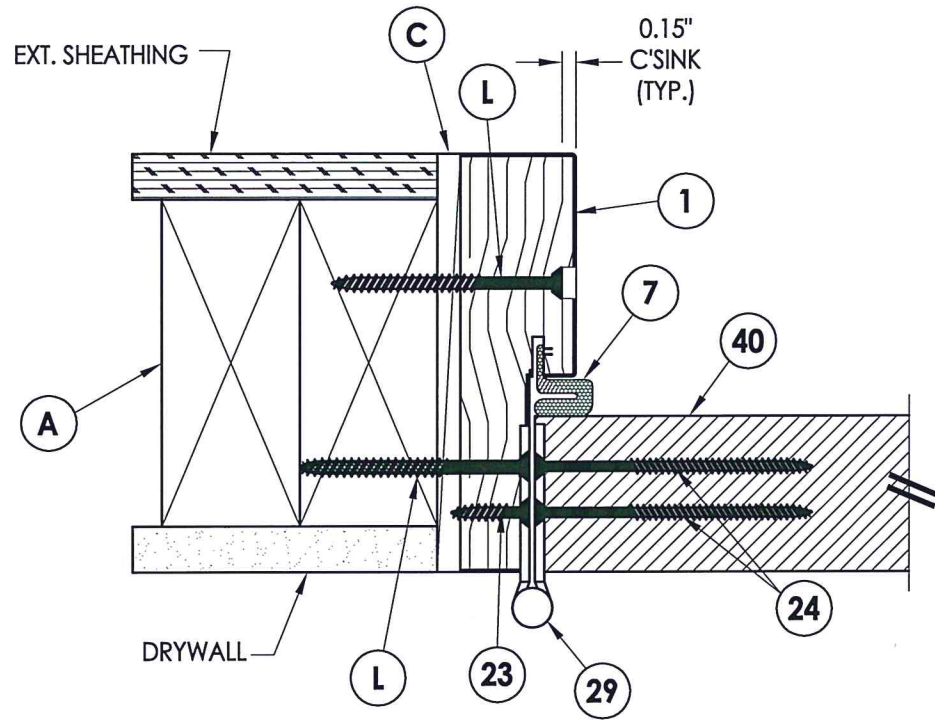
TEXAS BOARD OF PROFESSIONAL ENGINEERS  
 CERTIFICATE OF REGISTRATION # F-11852

PRODUCT: R3 COMPOSITES

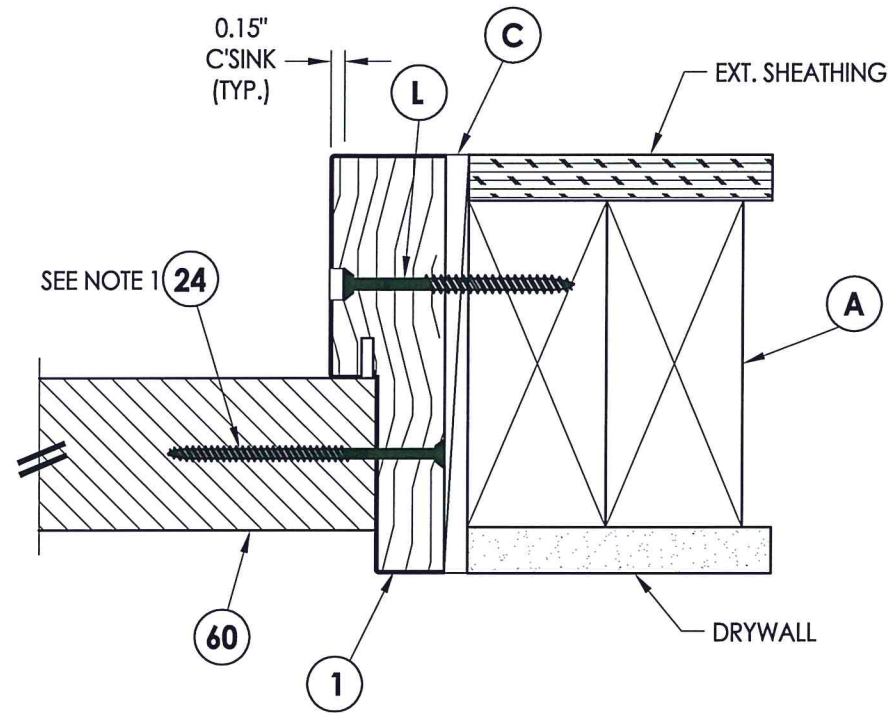
PART OR ASSEMBLY: ELEVATIONS

NO.	DATE	REVISIONS	BY

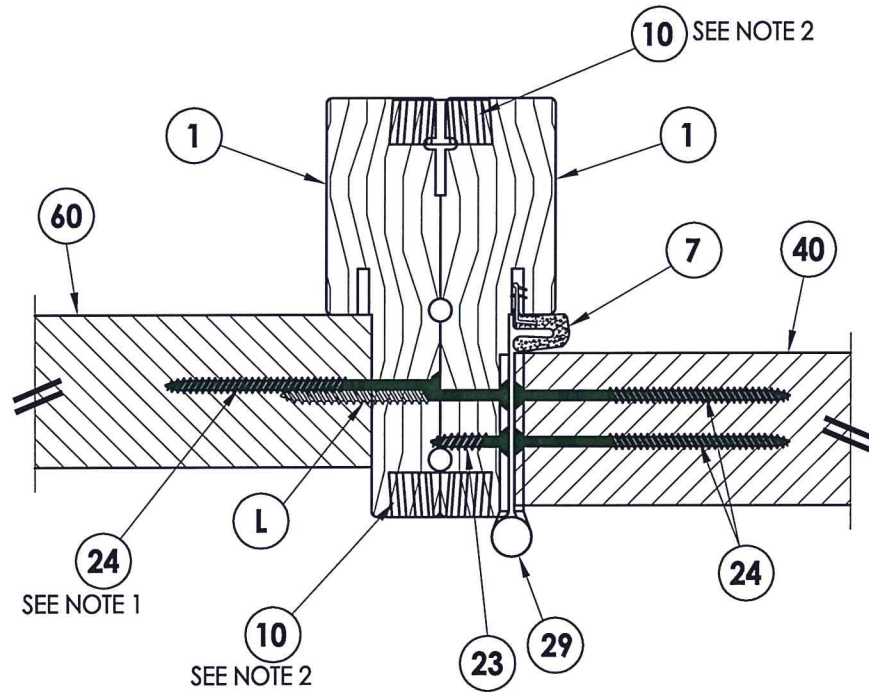
DATE: 7/20/15  
 SCALE: N.T.S.  
 DWG. BY: JK  
 CHK. BY: LFS  
 DRAWING NO.: TX-4551  
 SHEET 4 OF 8



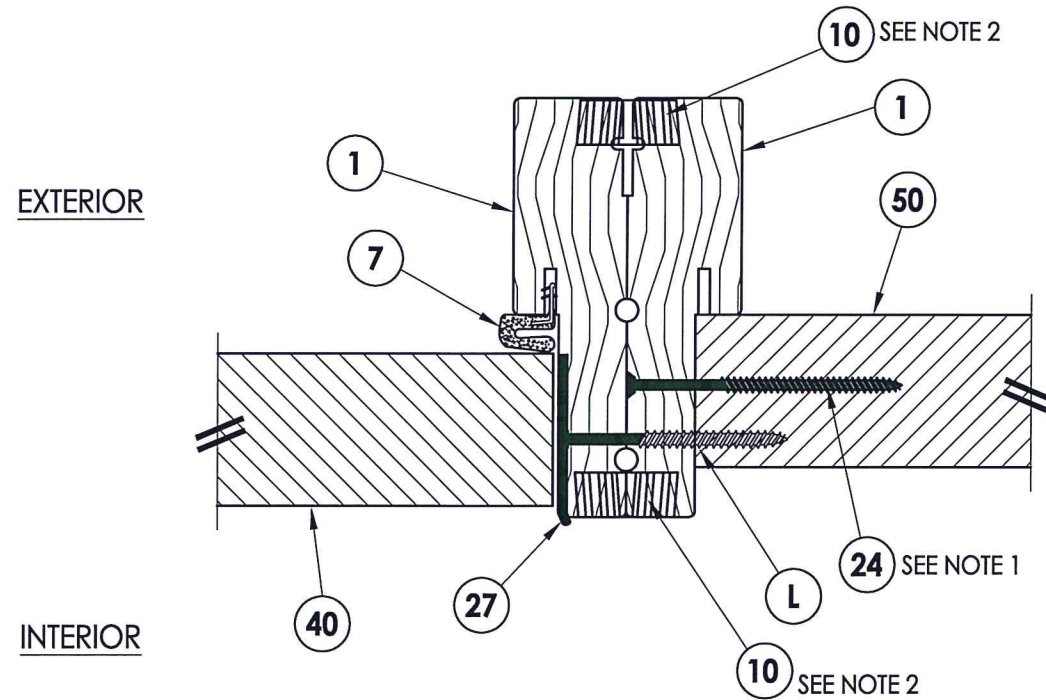
**1 HORIZONTAL CROSS SECTION**  
5 Inswing shown



**4 HORIZONTAL CROSS SECTION**  
5 Inswing shown

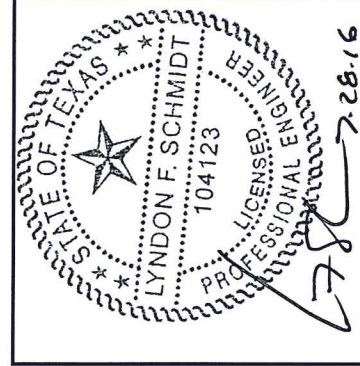


**2 HORIZONTAL CROSS SECTION**  
5 Inswing shown



**3 HORIZONTAL CROSS SECTION**  
5 Inswing shown

NOTE:  
1. Location for item #24 is 1 at the center jamb (1) total.  
2. Location for item #10 is 2" from each end then 8 more equally spaced (10) total.



Lyndon F. Schmidt, P.E.  
TEXAS P.E. #104123

**RW** BUILDING CONSULTANTS, INC.  
P.O. Box 230 Valrico FL 33595  
Phone No.: 813.659.9197

TEXAS BOARD OF PROFESSIONAL ENGINEERS  
CERTIFICATE OF REGISTRATION # F-11852

Documents Prepared By:

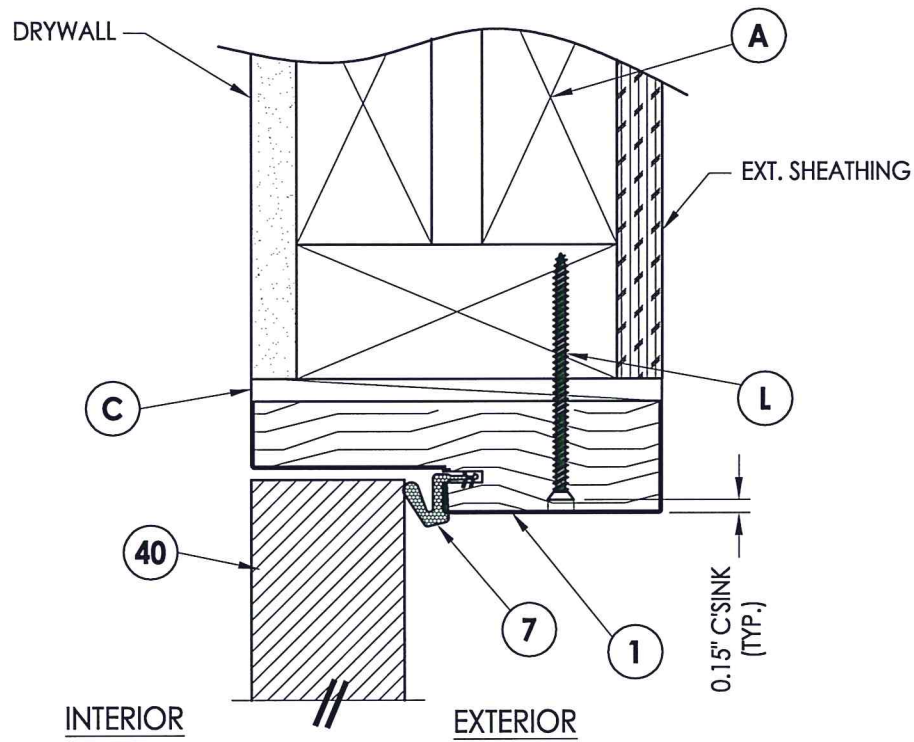
PRODUCT: R3 COMPOSITES

PART OR ASSEMBLY: HORIZONTAL CROSS SECTIONS

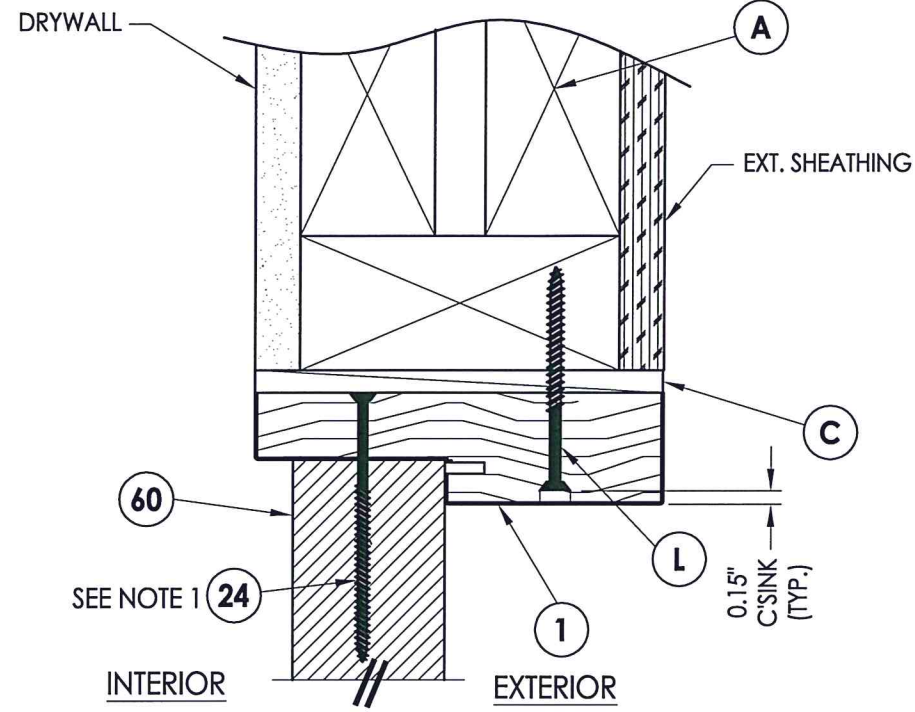
NO.	DATE	BY

DATE: 7/20/15  
SCALE: N.T.S.  
DWG. BY: JK  
CHK. BY: LFS  
DRAWING NO.: TX-4551  
SHEET 5 OF 8

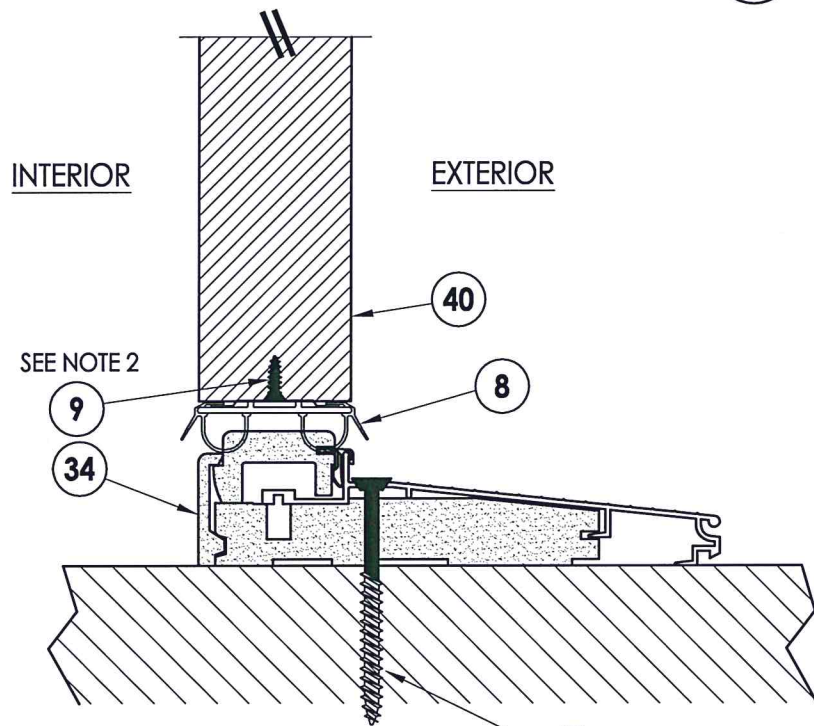




**1** VERTICAL CROSS SECTION  
**6** Inswing shown

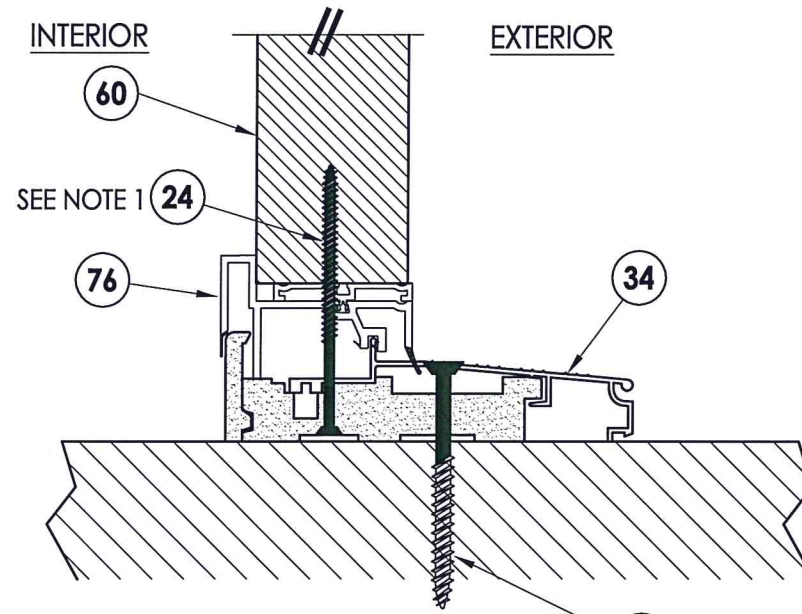


**2** VERTICAL CROSS SECTION  
**6** Inswing shown



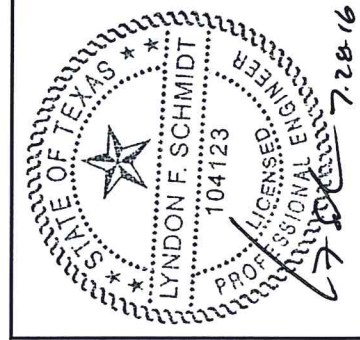
**3** VERTICAL CROSS SECTION  
**6** Inswing configuration

**L** WOOD  
**P** CONCRETE



**4** VERTICAL CROSS SECTION  
**6** Inswing configuration

**L** WOOD  
**P** CONCRETE



Documents Prepared By: Lyndon F. Schmidt, P.E.  
TEXAS P.E. #104123

**RW** BUILDING CONSULTANTS, INC.  
P.O. Box 230 Valrico FL 33595  
Phone No.: 813.659.9197

TEXAS BOARD OF PROFESSIONAL ENGINEERS  
CERTIFICATE OF REGISTRATION # F-11852

PRODUCT: R3 COMPOSITES  
PART OR ASSEMBLY: VERTICAL CROSS SECTIONS

NO.	DATE	BY	REVISIONS

DATE: 7/20/15  
SCALE: N.T.S.  
DWG. BY: JK  
CHK. BY: LFS  
DRAWING NO.: TX-4551  
SHEET 6 OF 8

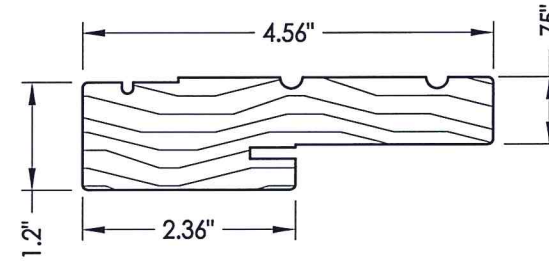




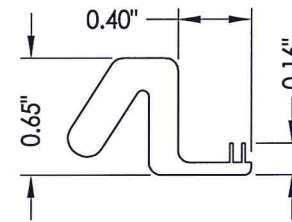
R:\Clients\R 3 Composites PERMANENT\B - Texas Dept of Ins\6'8 Opaque Fiberglass Door\C - Drawings\TX-4552.dwg, 8.1

**BILL OF MATERIALS**

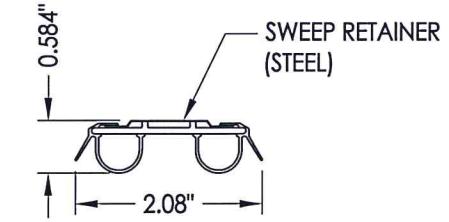
ITEM #	DESCRIPTION	MATERIAL
A	2X FRAMING (SG >= 0.42)	WOOD
C	1/4" MAX. SHIM SPACE	-
F	#8 X 2-1/2" PFH WOOD SCREW	STEEL
L	#10 X 2-1/2" PFH WOOD SCREW (1.15" MIN. EMBEDMENT)	STEEL
P	1/4" PFH CONCRETE SCREW (1-3/4" MIN. EMBEDMENT)	STEEL
1	JAMB - FINGER JOINTED PINE	WOOD
7	WEATHERSTRIP	FOAM
8	DOOR BOTTOM SWEEP WITH STEEL RETAINER	VINYL
9	#8 X 1/2" PFH WOOD SCREW	STEEL
10	CORRUGATED FASTENER (16 GA. 1.25" X .5")	STEEL
23	#10 X 3/4" PFH WOOD SCREW	STEEL
24	#9 X 3" PFH WOOD SCREW	STEEL
27	LATCH STRIKE PLATE	STEEL
28	DEADBOLT STRIKE PLATE	STEEL
29	4" X 4" HINGE	STEEL
34	INSWING ADJUSTABLE THRESHOLD	ALUM. / WOOD
40	DOOR PANEL - SEE DOOR PANEL DETAIL SHEET FOR CONSTRUCTION DETAILS	-
60	SIDELITE PANEL - SEE SIDELITE PANEL DETAIL SHEET FOR CONSTRUCTION DETAILS	-
76	INSWING SIDELITE ADAPTOR	PVC



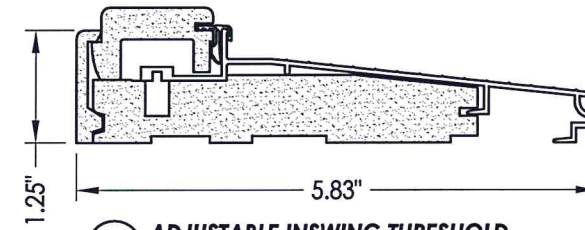
**1 WOOD JAMB**



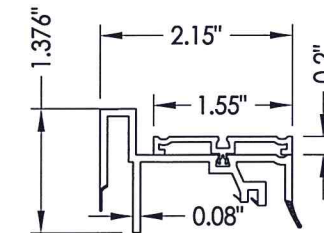
**7 WEATHERSTRIP**  
Endura Force 5



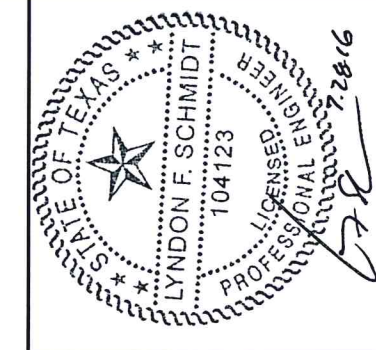
**8 DOOR BOTTOM SWEEP**



**34 ADJUSTABLE INSWING THRESHOLD**  
By Endura



**76 INSWING SIDELITE ADAPTOR**



Lyndon F. Schmidt, P.E.  
TEXAS P.E. #104123

**RW BUILDING CONSULTANTS, INC.**  
P.O. Box 230 Vairco FL, 33595  
Phone No.: 813.659.9197

TEXAS BOARD OF PROFESSIONAL ENGINEERS  
CERTIFICATE OF REGISTRATION # F-11852

Documents Prepared By:

PRODUCT: R3 COMPOSITES

PART OR ASSEMBLY: BILL OF MATERIALS AND COMPONENTS

NO.	DATE	BY	REVISIONS

DATE: 7/20/15

SCALE: N.T.S.

DWG. BY: JK

CHK. BY: LFS

DRAWING NO.: TX-4551

SHEET 8 OF 8

**CONCRETE ANCHOR NOTES:**

- Concrete anchor locations at the corners may be adjusted to maintain the min. edge distance to mortar joints.
- Concrete anchor locations noted as "MAX. ON CENTER" must be adjusted to maintain the min. edge distance to mortar joints, additional concrete anchors may be required to ensure the "MAX. ON CENTER" dimension are not exceeded.
- Concrete anchor table:

ANCHOR TYPE	ANCHOR SIZE	MIN. EMBEDMENT	MIN. CLEARANCE TO MASONRY EDGE	MIN. CLEARANCE TO ADJACENT ANCHOR
ITW TAPCON®	1/4"	1-1/4"	2"	4"
ELCO ULTRACON®	1/4"	1-1/4"	1"	4"