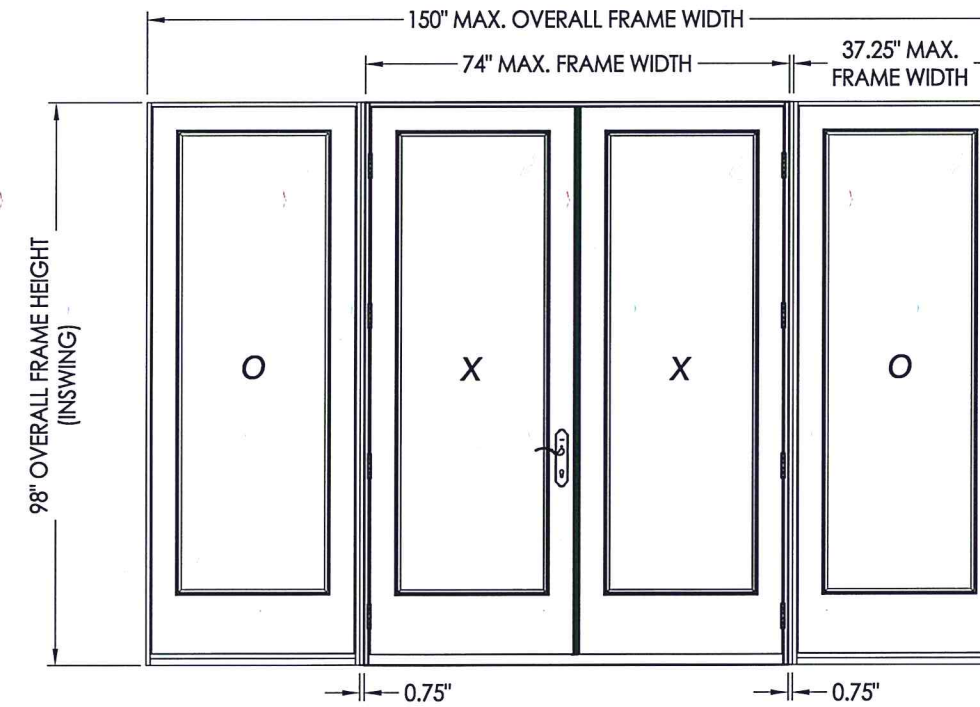
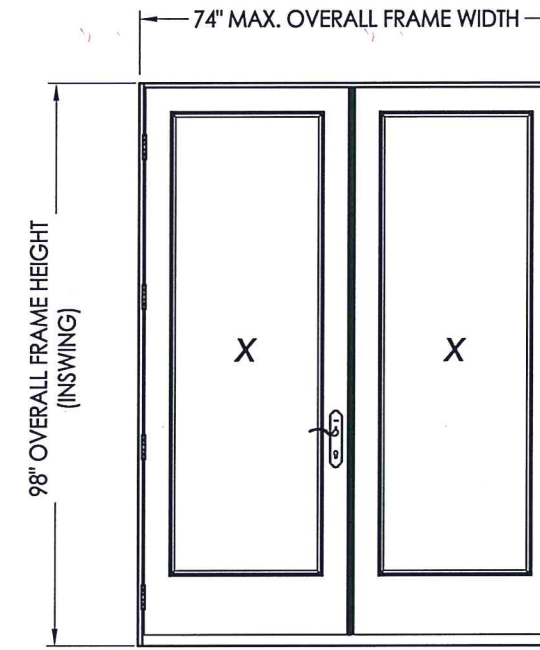


# plastpro

5200 W. CENTURY BLVD.  
LOS ANGELES, CA 90045

## FLUSH GLAZED FIBERGLASS DOORS DOUBLES w/ or w/out SIDELITES IN SWING "IMPACT"



CONFIG.	MAX. FRAME DIMENSION	DESIGN PRESSURE (PSF) INSWING	
		POS.	NEG.
XX	74.0" x 98.0"	+50.0	-55.0
OXXO	150.0" x 98.0"	+50.0	-55.0

### EVALUATED FOR USE IN THE STATE OF TEXAS

The Fiberglass Door system described herein complies with the 2018 International Residential Code (IRC), Sections R301 & R609 and the 2018 International Building Code (IBC), Sections 1404.13, 1609, 1709.5, 2403 and 2404 subject to the following conditions:

1. Anchors shall be as listed and spaced as shown in the details. Anchor embedment to base material shall be beyond wall dressing or stucco.
2. This system has been tested and evaluated as a large missile impact protective system for installation in areas that require wind borne debris protection. This product meets missile level "D" as defined in ASTM E 1996.
3. Allowable design pressure requirements must be equal to or less than the design pressure rating shown in the design pressure chart, sheet 1 of this drawing.
4. Conditions not covered by this drawing are subject to further engineering analysis.

### TABLE OF CONTENTS

SHEET#	DESCRIPTION
1	Typical elevations, design pressures & general notes
2	Door panel details
3	Sidelite panel details
4	Elevations
5	Vertical cross sections
6	Horizontal cross sections
7	Frame anchoring & hardware details
8	Bill of materials and components



Documents Prepared By: Lyndon F. Schmidt, P.E.  
TEXAS P.E. #104123

**RW** BUILDING CONSULTANTS, INC.  
P.O. Box 230 Valrico FL, 33595  
Phone No.: 813.659.9197  
TEXAS BOARD OF PROFESSIONAL ENGINEERS  
CERTIFICATE OF REGISTRATION # F-11852

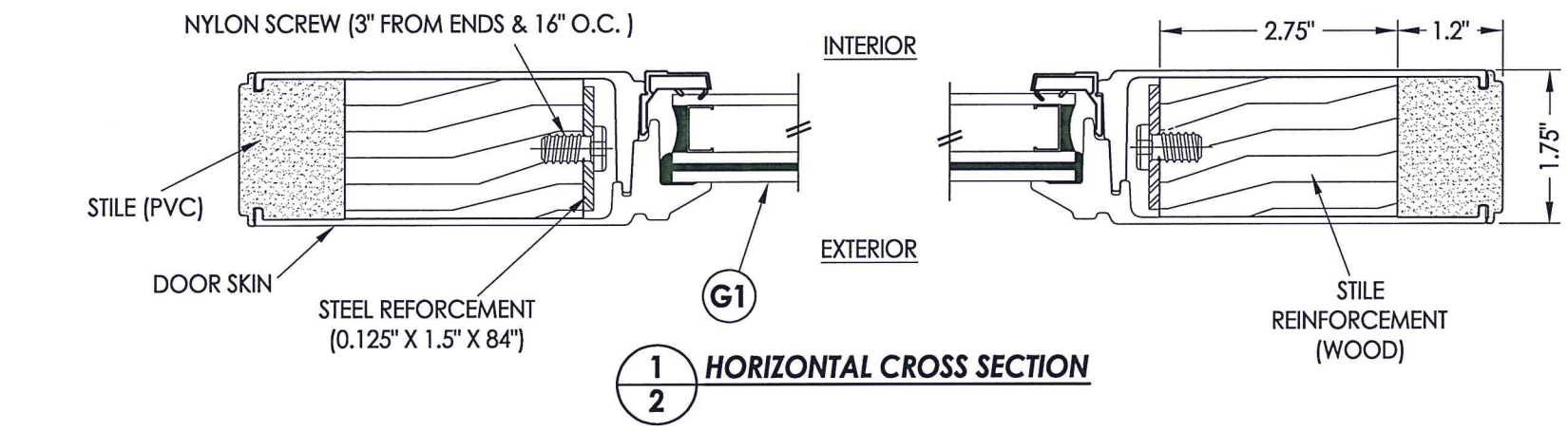
PRODUCT: PLASTPRO FIBERGLASS DOOR  
PART OR ASSEMBLY: TYPICAL ELEVATION, DESIGN PRESSURES & GENERAL NOTES

NO.	DATE	REVISIONS
1	5/05/20	UPDATE TO 2018 IBC/IRC CODE

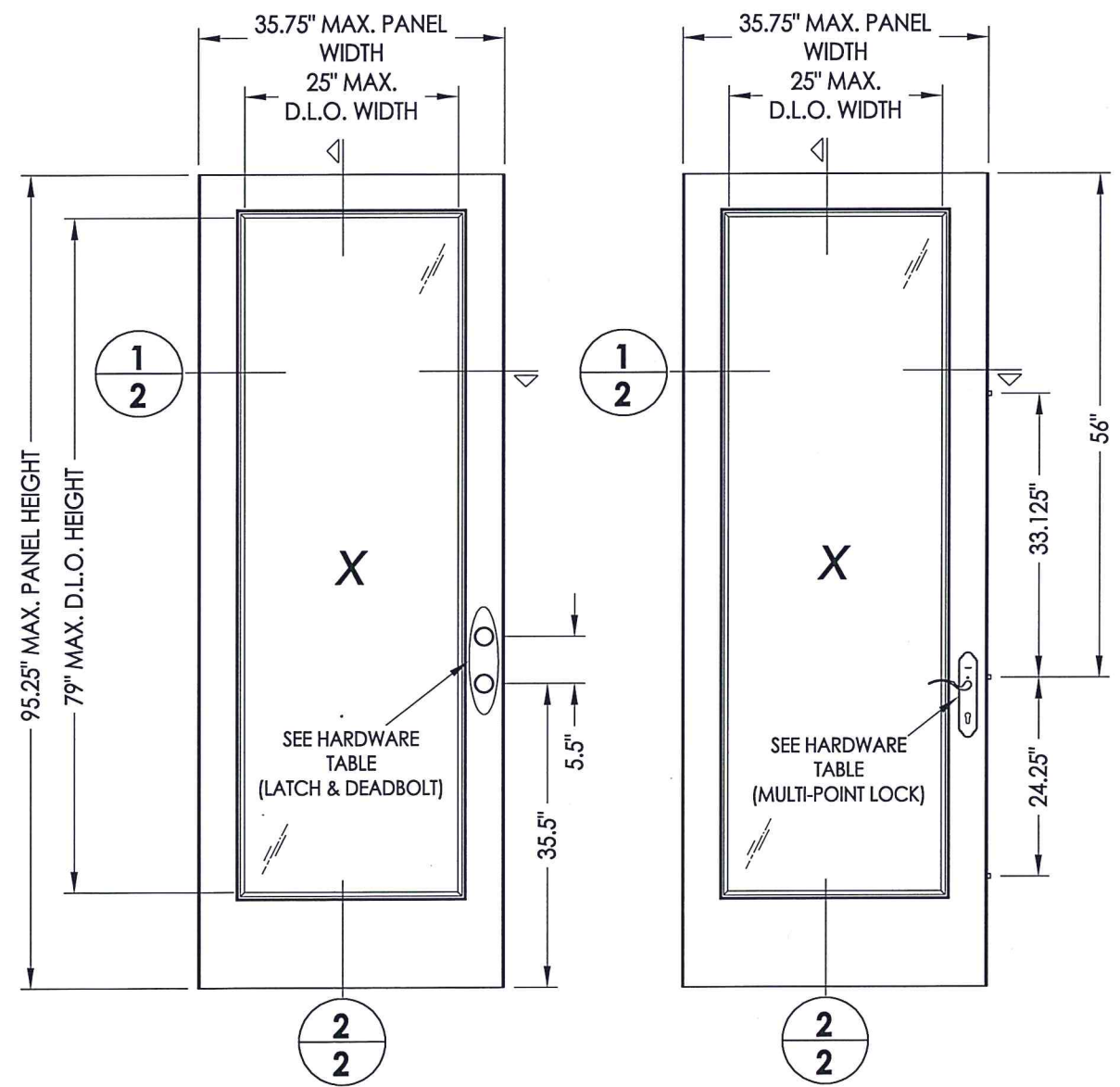
DATE: 1/13/16  
SCALE: N.T.S.  
DWG. BY: JK  
CHK. BY: LFS  
DRAWING NO.: TX-4597

SHEET 1 OF 8

R:\Clients\Plastpro, Inc PERMANENT B - TD\INDL - DR 786 Flush Glazed Impact C - Drawings\TX-4596.4597.dwg - 2

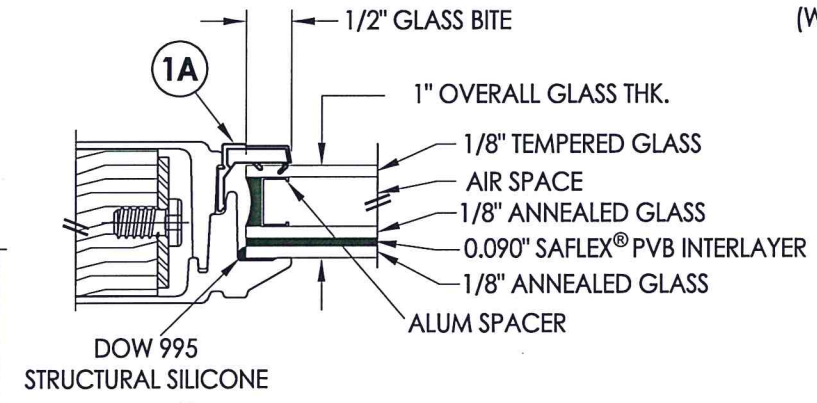


**1**  
**2** HORIZONTAL CROSS SECTION

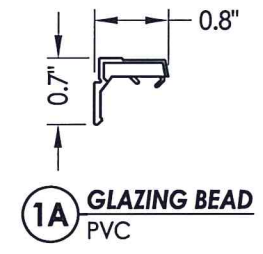


**40** PLASTPRO DOOR PANEL  
FLUSH GLAZED

DOOR SKIN: FIBERGLASS (0.086\"/>

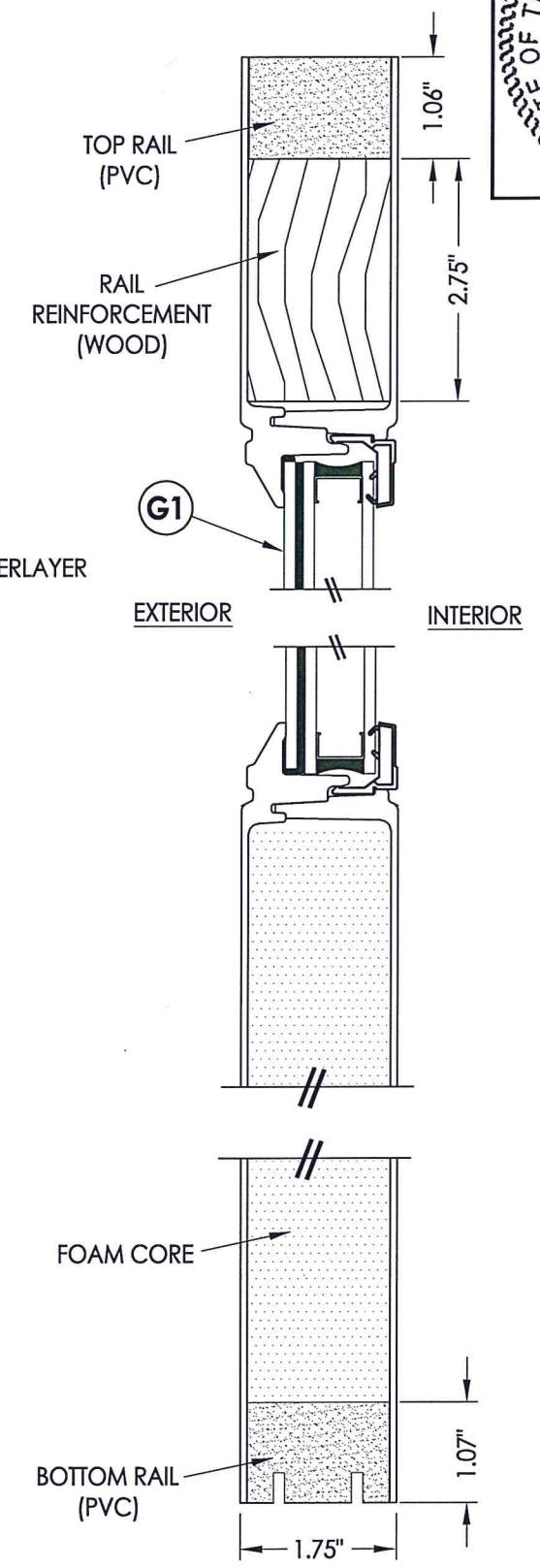


**G1** GLAZING DETAIL  
FLUSH GLAZED



**1A** GLAZING BEAD  
PVC

HARDWARE TABLE		
MANUFACTURER	MODEL	
KWIKSET	KNOB:	SIGNATURE SERIES
	DEADBOLT:	SERIES (660)
SCHLAGE	KNOB:	F51
	DEADBOLT:	B60N
YALE	KNOB:	NEW TRADITIONS
	DEADBOLT:	YH 82
ENDURA PRODUCTS	MULTI-POINT LOCK: TRILENNIUM 3000 SERIES (3 PT.)	



**2**  
**2** VERTICAL CROSS SECTION



Documents Prepared By: Lyndon F. Schmidt, P.E.  
TEXAS P.E. #104123

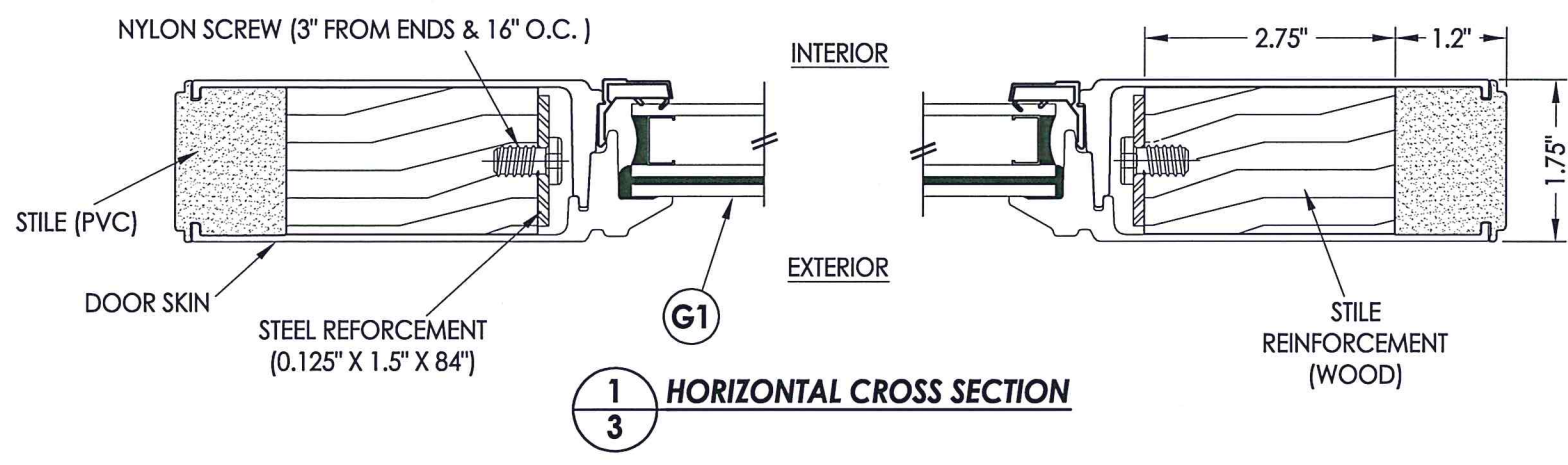
**RW** BUILDING CONSULTANTS, INC.  
P.O. Box 230 Vairico FL 33595  
Phone No.: 813.659.9197

TEXAS BOARD OF PROFESSIONAL ENGINEERS  
CERTIFICATE OF REGISTRATION # F-11852

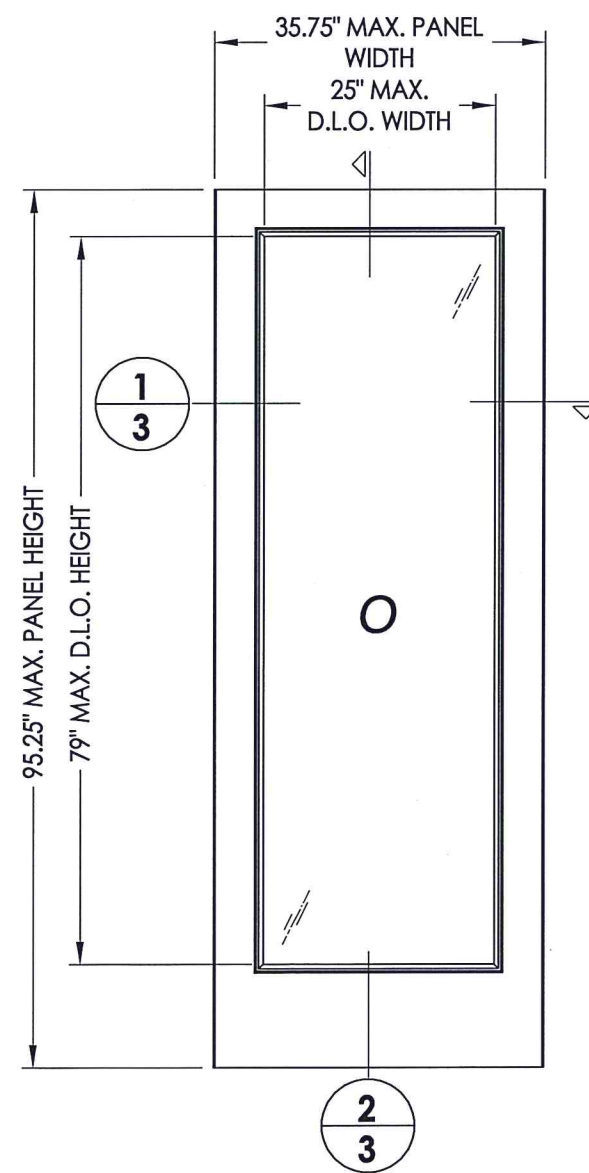
PRODUCT:	PLASTPRO FIBERGLASS DOOR
PART OR ASSEMBLY:	DOOR PANEL DETAILS
DATE:	1/13/16
SCALE:	N.T.S.
DWG. BY:	JK
CHK. BY:	LFS
DRAWING NO.:	TX-4597
SHEET	2 OF 8

© 2016 R.W. BUILDING CONSULTANTS INC.

R:\Clients\Plastpro, Inc PERMANENT B - TD\VIDL - DR 786 Flush Glazed Impact C - Drawings\TX-4596-4597.dwg, 3

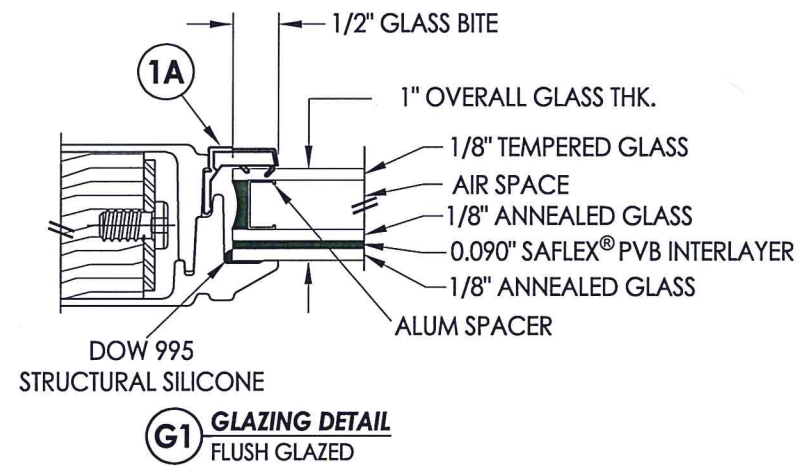


**1**  
**3** **HORIZONTAL CROSS SECTION**

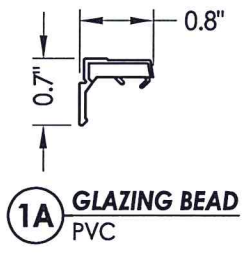


**50** **PLASTPRO SIDELITE PANEL**  
FLUSH GLAZED

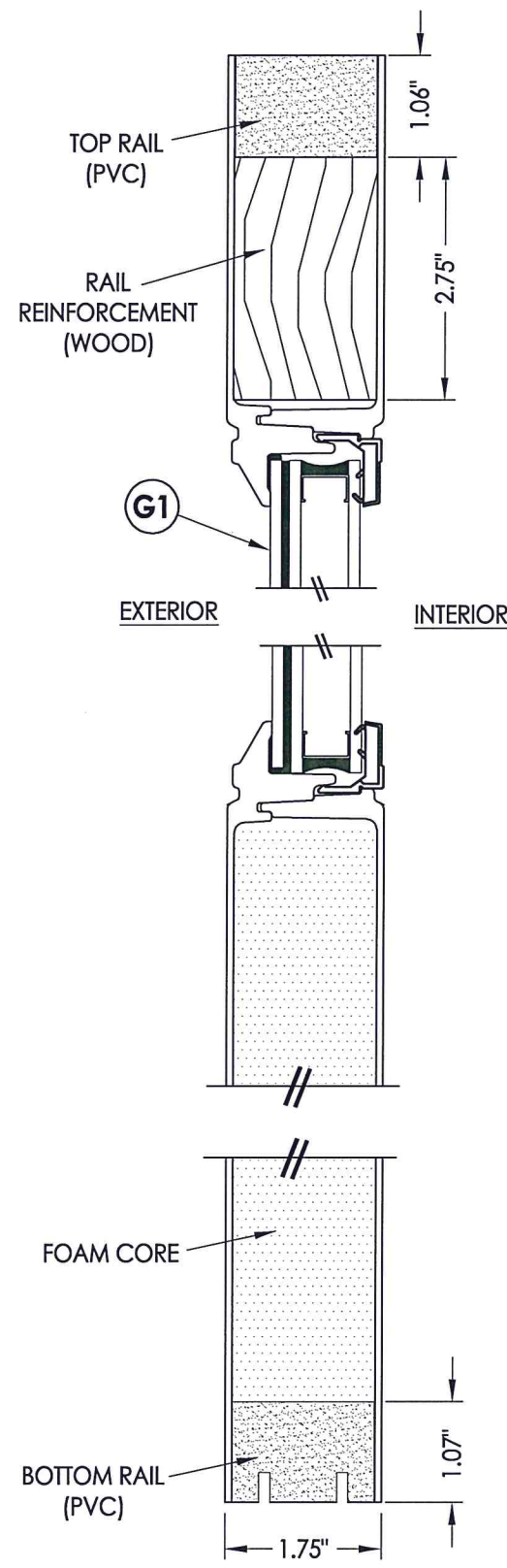
DOOR SKIN: FIBERGLASS (0.086" MIN. THK.)  
FOAM CORE: POLYURETHANE (1.9 PCF MIN.)



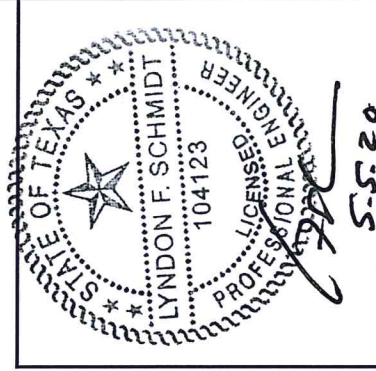
**G1** **GLAZING DETAIL**  
FLUSH GLAZED



**1A** **GLAZING BEAD**  
PVC



**2**  
**3** **VERTICAL CROSS SECTION**



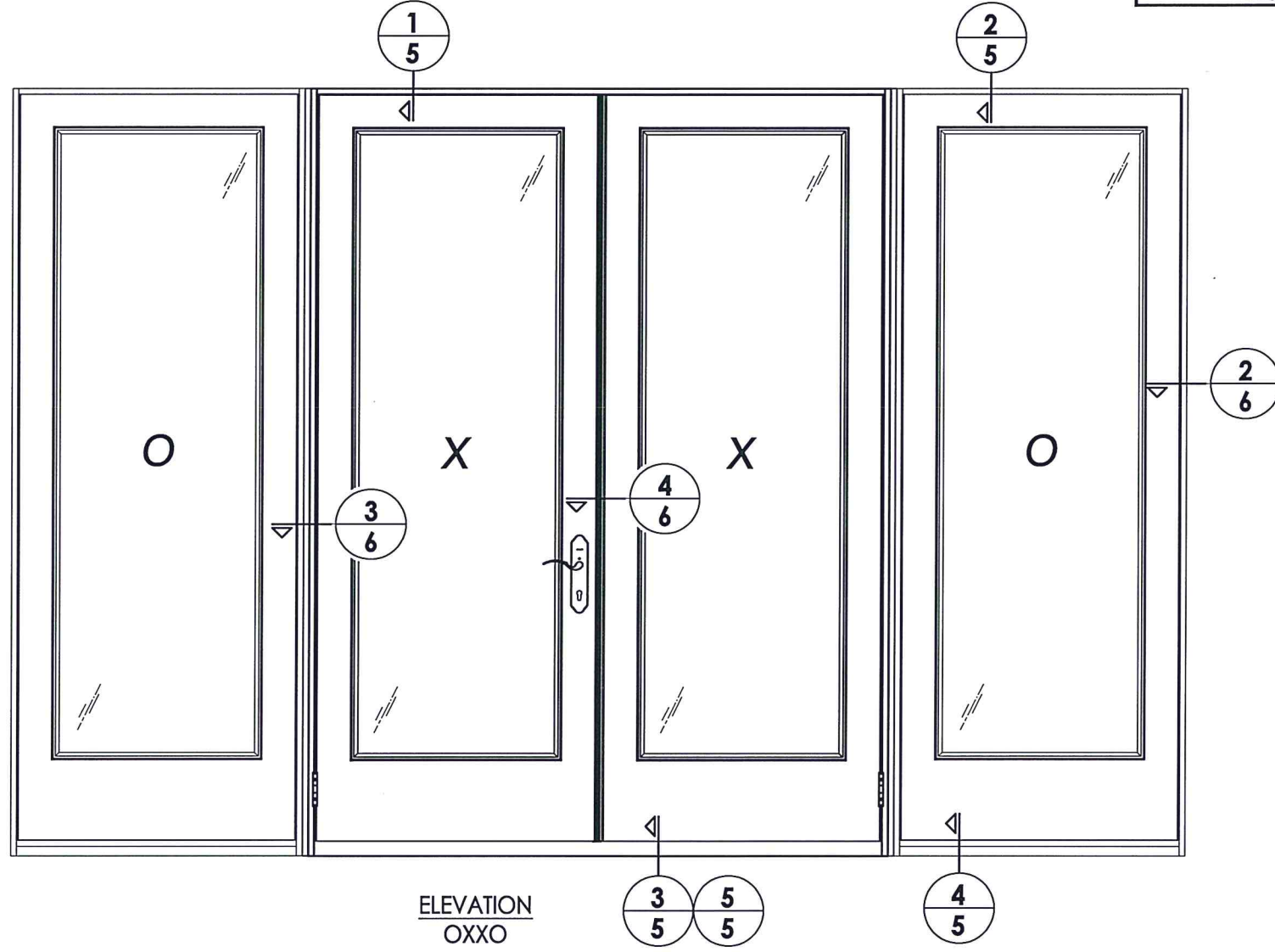
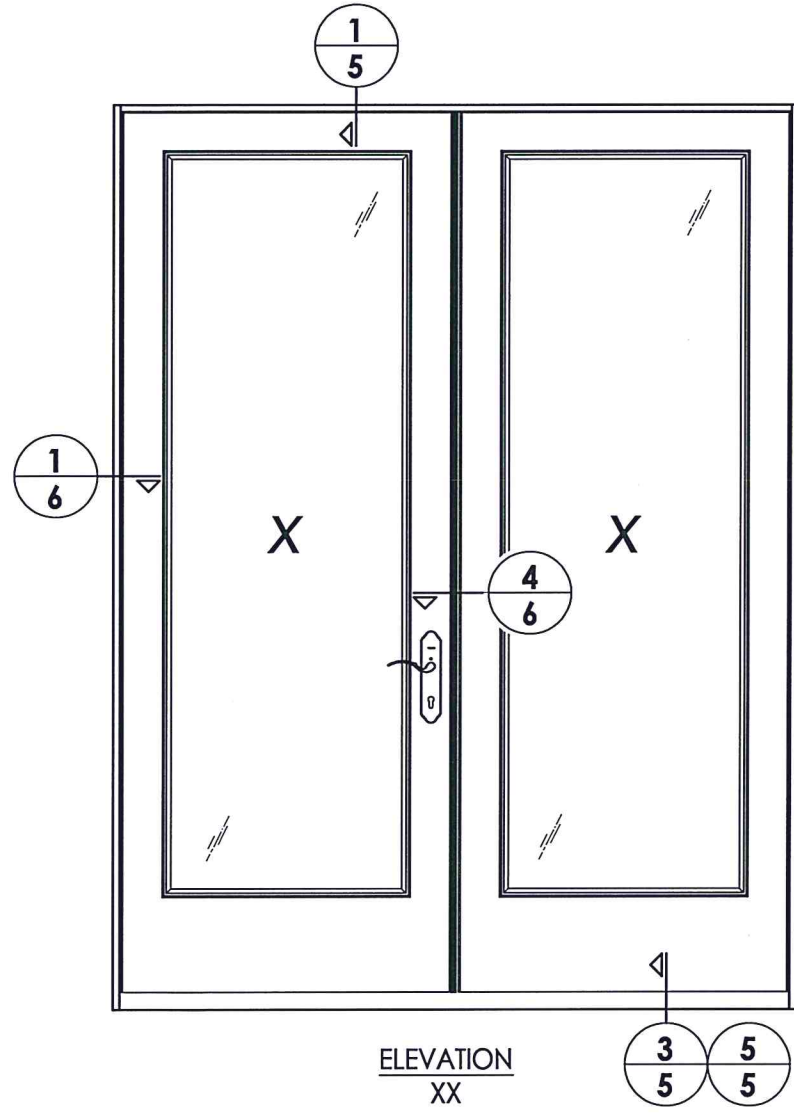
Documents Prepared By: Lyndon F. Schmidt, P.E.  
TEXAS P.E. #104123

**RW** BUILDING CONSULTANTS, INC.  
P.O. Box 230 Valrico FL, 33595  
Phone No.: 813.659.9197  
TEXAS BOARD OF PROFESSIONAL ENGINEERS  
CERTIFICATE OF REGISTRATION # F-11852

PRODUCT:	PLASTPRO FIBERGLASS DOOR
PART OR ASSEMBLY:	SIDELITE PANEL DETAILS

NO.	DATE	DESCRIPTION
1	5/05/20	UPDATE TO 2018 IBC/IRC CODE
		LFS
		BY

DATE:	1/13/16
SCALE:	N.T.S.
DWG. BY:	JK
CHK. BY:	LFS
DRAWING NO.:	TX-4597
SHEET	3 of 8



Documents Prepared By: Lyndon F. Schmidt, P.E.  
TEXAS P.E. #104123

**RW** BUILDING CONSULTANTS, INC.  
P.O. Box 230 Valrico FL, 33595  
Phone No.: 813.659.9197

TEXAS BOARD OF PROFESSIONAL ENGINEERS  
CERTIFICATE OF REGISTRATION # F-11852

PRODUCT: PLASTPRO FIBERGLASS DOOR

PART OR ASSEMBLY: ELEVATIONS

REVISIONS	
NO.	DATE
1	5/05/20
	UPDATE TO 2018 IBC/IRC CODE
	LFS
	BY

DATE: 1/13/16

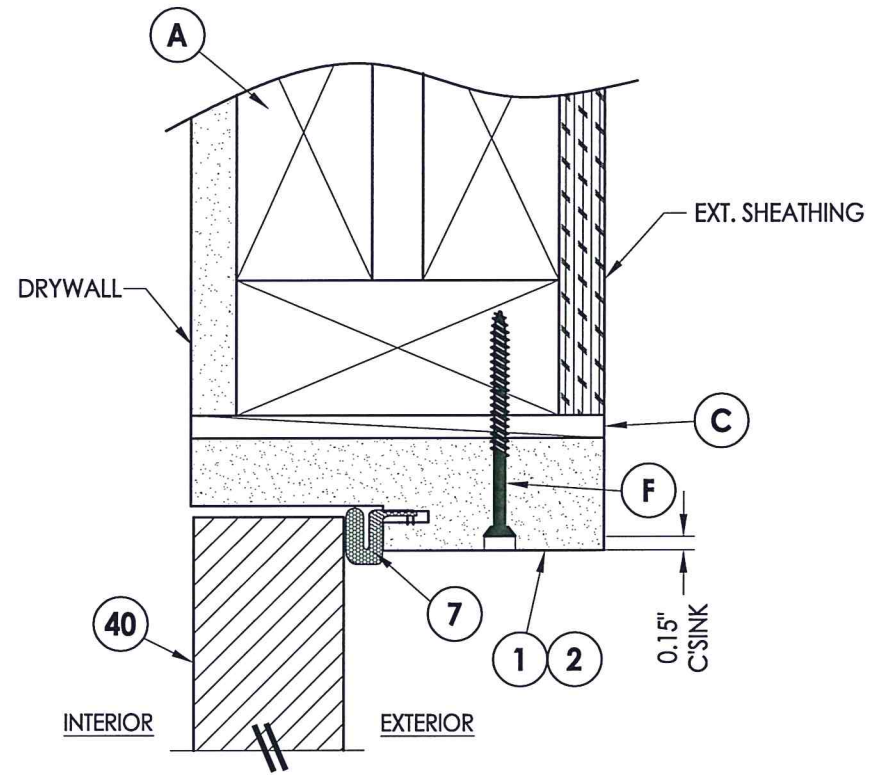
SCALE: N.T.S.

DWG. BY: JK

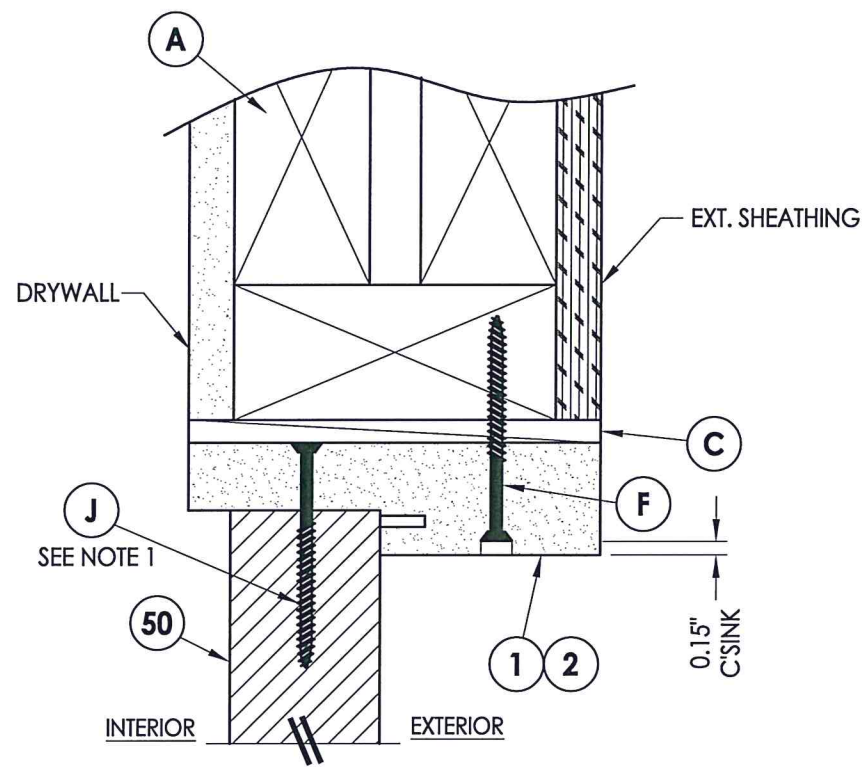
CHK. BY: LFS

DRAWING NO.: TX-4597

SHEET 4 OF 8

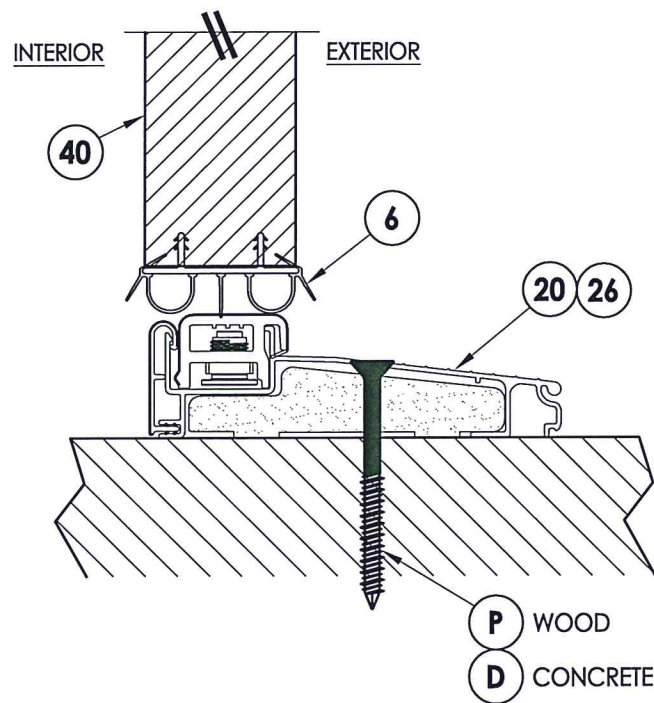


**1**  
**5** VERTICAL CROSS SECTION

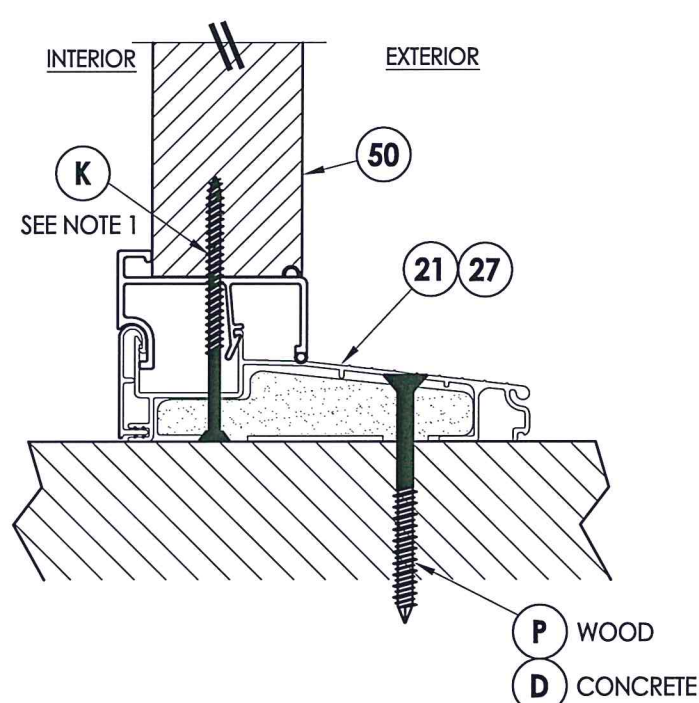


**2**  
**5** VERTICAL CROSS SECTION

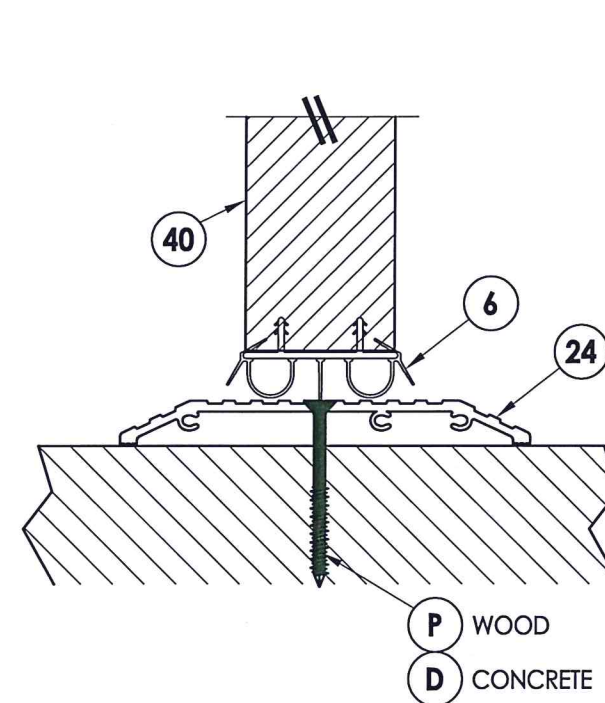
1. NOTE:  
Spacing for items J & K @ head & sill: 6" from each end.



**3**  
**5** VERTICAL CROSS SECTION  
Inswing sill



**4**  
**5** VERTICAL CROSS SECTION  
Inswing sill



**5**  
**5** VERTICAL CROSS SECTION  
ADA Sill

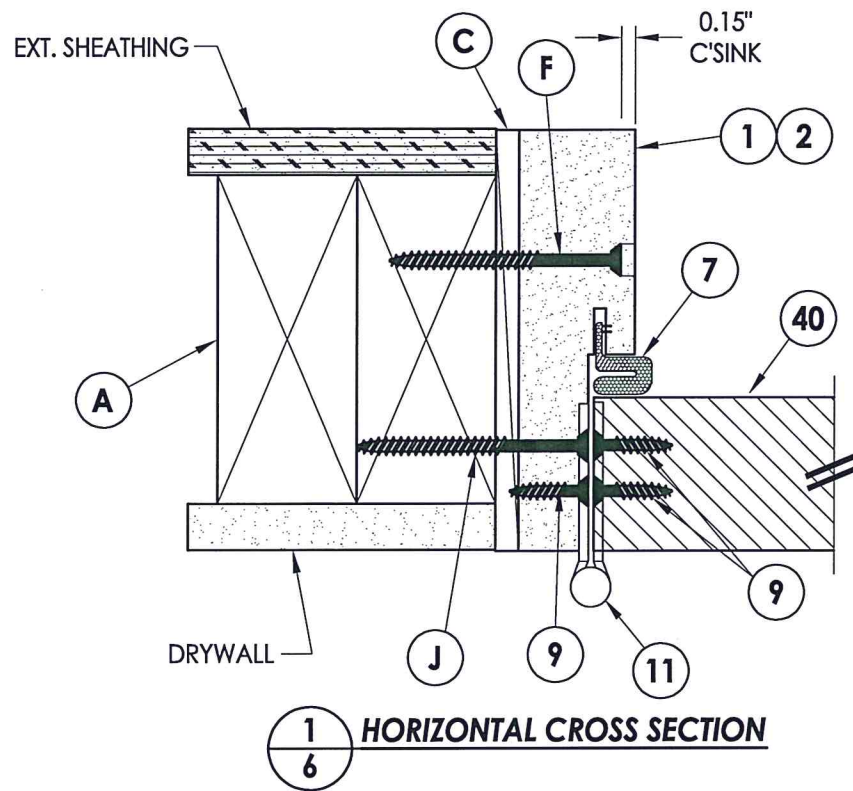


Documents Prepared By: Lyndon F. Schmidt, P.E.  
TEXAS P.E. #104123

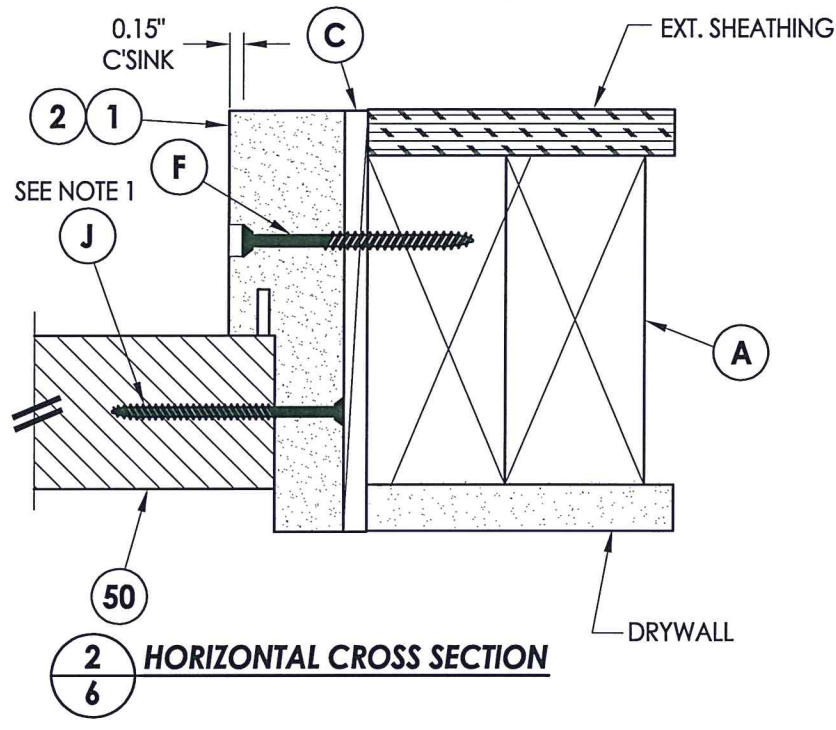
**R.W.** BUILDING CONSULTANTS, INC.  
P.O. Box 230 Valrico FL, 33595  
Phone No.: 813.659.9197

TEXAS BOARD OF PROFESSIONAL ENGINEERS  
CERTIFICATE OF REGISTRATION # F-11852

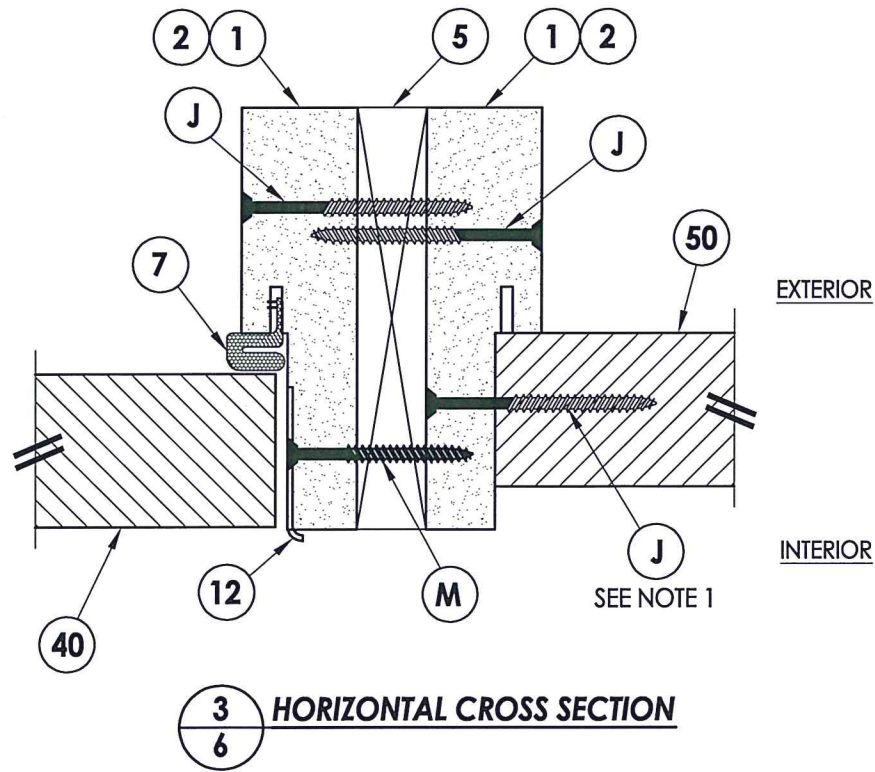
PRODUCT: PLASTPRO FIBERGLASS DOOR	
PART OR ASSEMBLY: VERTICAL CROSS SECTIONS	
NO.	DATE
1	5/05/20
UPDATE TO 2018 IBC/IRC CODE	
LFS	BY
REVISIONS	
DATE: 1/13/16	
SCALE: N.T.S.	
DWG. BY: JK	
CHK. BY: LFS	
DRAWING NO.: TX-4597	
SHEET 5 OF 8	



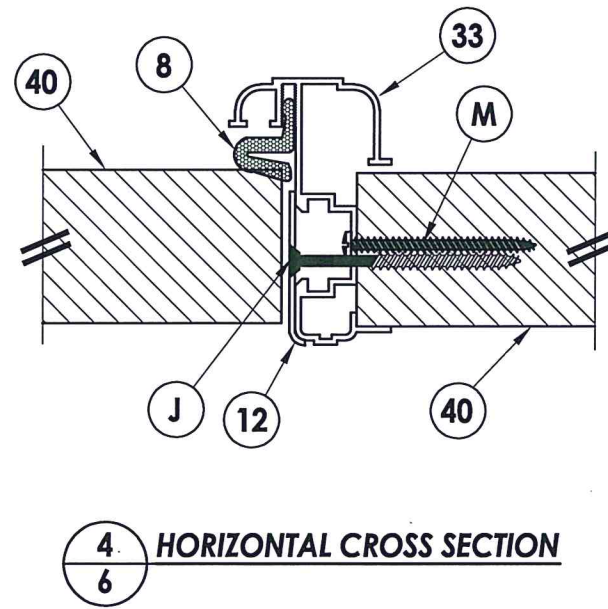
**1**  
**6** HORIZONTAL CROSS SECTION



**2**  
**6** HORIZONTAL CROSS SECTION

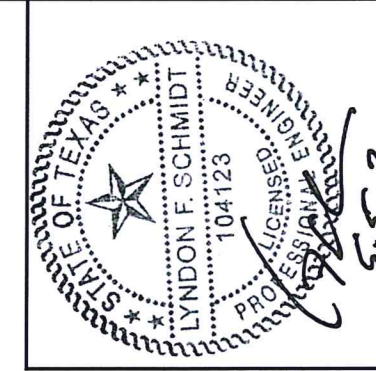


**3**  
**6** HORIZONTAL CROSS SECTION



**4**  
**6** HORIZONTAL CROSS SECTION

NOTE:  
1. Spacing for item J: 6" from each end and 5 more equally spaced along sidelite jamb (7 total).



Documents Prepared By: Lyndon F. Schmidt, P.E.  
TEXAS P.E. #104123

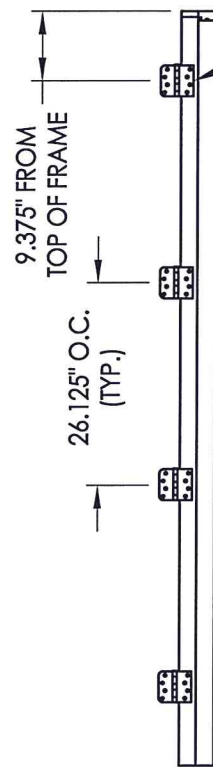
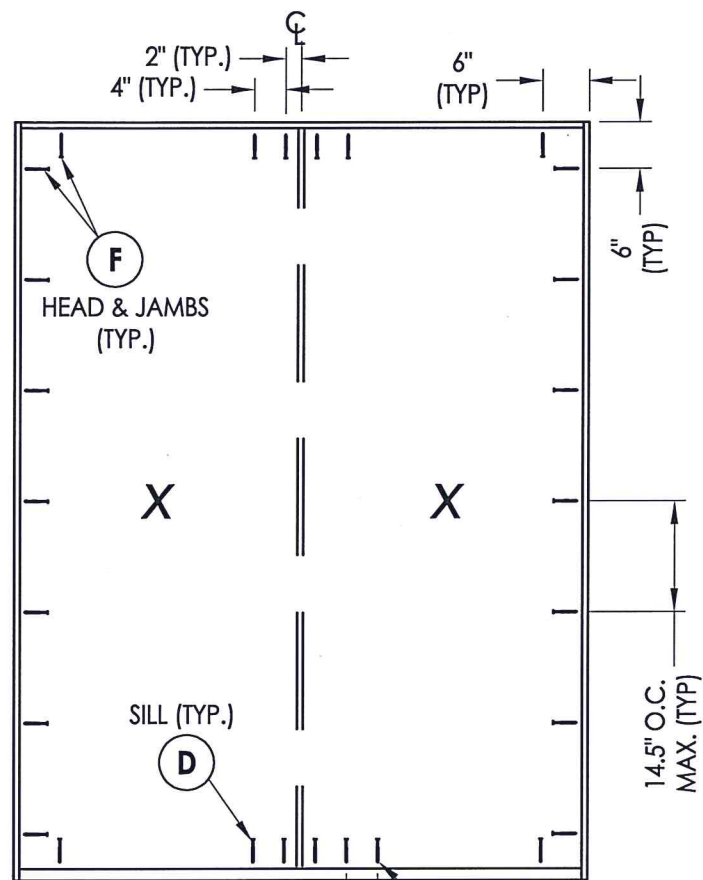
**RW** BUILDING CONSULTANTS, INC.  
P.O. Box 230 Vairico FL. 33595  
Phone No.: 813.659.9197  
TEXAS BOARD OF PROFESSIONAL ENGINEERS  
CERTIFICATE OF REGISTRATION # F-11852

PRODUCT:	PLASTPRO FIBERGLASS DOOR
PART OR ASSEMBLY:	HORIZONTAL CROSS SECTIONS

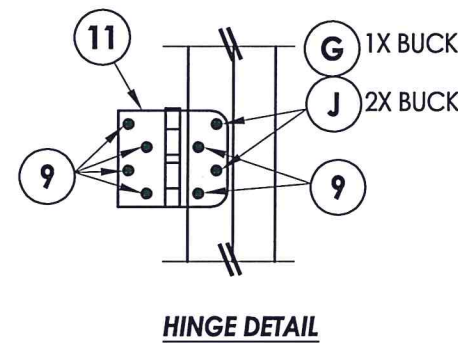
REVISIONS	
NO.	DATE
1	5/05/20
	UPDATE TO 2018 IBC/IRC CODE
	LFS
	BY

DATE:	1/13/16
SCALE:	N.T.S.
DWG. BY:	JK
CHK. BY:	LFS
DRAWING NO.:	TX-4597
SHEET	6 OF 8

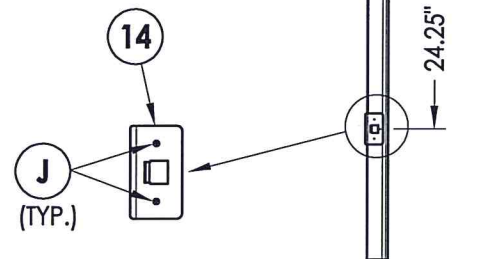
\* Additional anchor @ sill req'd for DP > 40 psf.



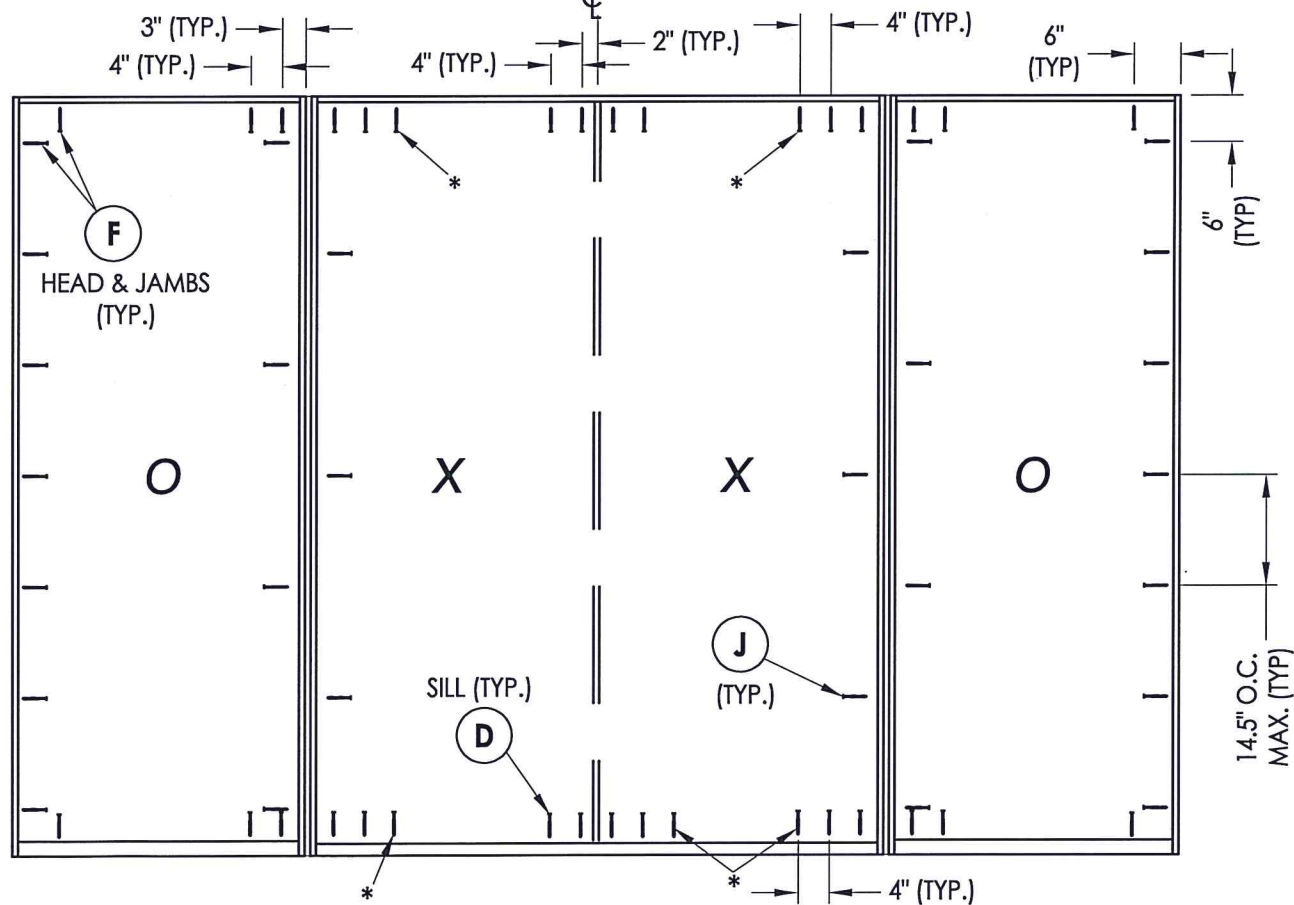
**HINGE JAMB**



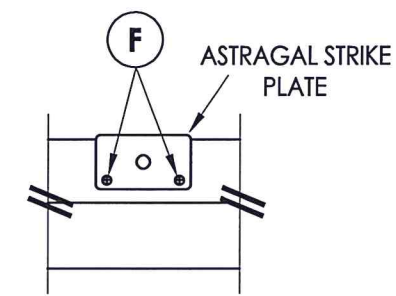
**HINGE DETAIL**



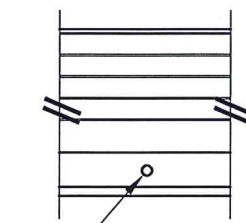
**MULTI-POINT LOCK STRIKE PLATE DETAIL**



**FRAME ANCHORING**

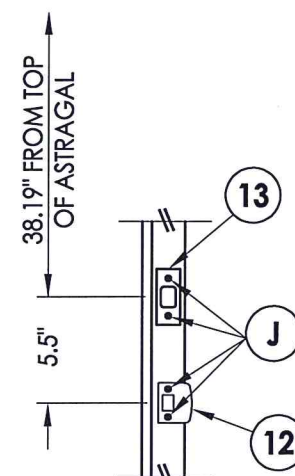


**ASTRAGAL BOLT DETAIL**  
Strike Plate @ Head

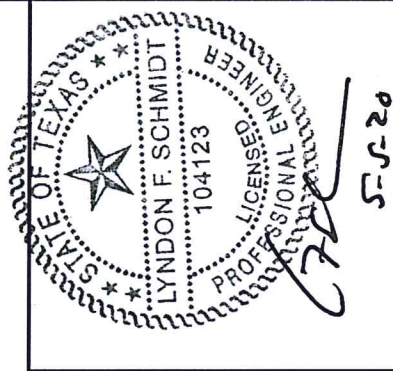


3/8" Ø BOLT HOLE

**ASTRAGAL BOLT DETAIL**  
Inswing Threshold



**LATCH AND DEADBOLT STRIKE PLATE DETAILS**



Documents Prepared By: Lyndon F. Schmidt, P.E.  
TEXAS P.E. #104123

**RW** BUILDING CONSULTANTS, INC.  
P.O. Box 230 Valrico FL 33595  
Phone No.: 813.659.9197

TEXAS BOARD OF PROFESSIONAL ENGINEERS  
CERTIFICATE OF REGISTRATION # F-11852

PRODUCT:	PLASTPRO FIBERGLASS DOOR
PART OR ASSEMBLY:	FRAME ANCHORING & HARDWARE DETAILS

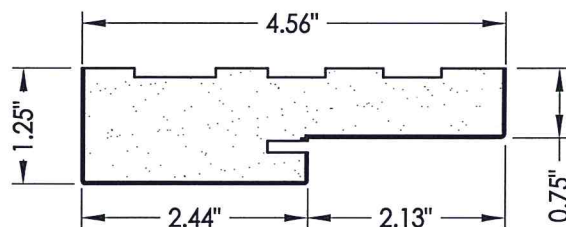
NO.	DATE	DESCRIPTION	LFS	BY
1	5/05/20	UPDATE TO 2018 IBC/IRC CODE	LFS	BY

DATE:	1/13/16
SCALE:	N.T.S.
DWG. BY:	JK
CHK. BY:	LFS
DRAWING NO.:	TX-4597
SHEET	7 OF 8

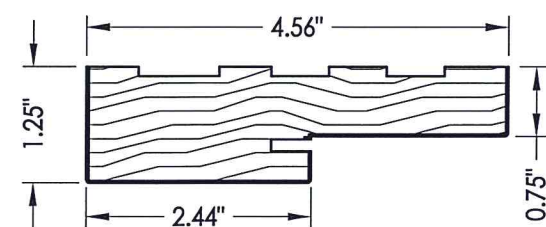
R:\Clients\Plastpro, Inc PERMANENT\B - TD\TDI - DR 786 Flush Glazed Impact\C - Drawings\TX-4596.4597.dwg, 8.

**BILL OF MATERIALS**

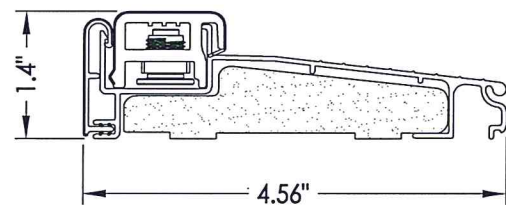
ITEM #	DESCRIPTION	MATERIAL
A	2X FRAMING (G >= 0.42)	WOOD
C	1/4" MAX. SHIM SPACE	-
D	1/4" PFH CONCRETE SCREW (1-1/4" MIN. EMB.)	STEEL
F	#10 X 2-1/2" PFH WOOD SCREW (1.15" MIN. EMB.)	STEEL
G	3/16" PFH CONCRETE SCREW (1-1/4" MIN. EMB.)	STEEL
J	#10 X 2-1/2" PFH WOOD SCREW	STEEL
K	#10 X 3" PFH WOOD SCREW	STEEL
M	#10 X 2" PH SMS	STEEL
1	POLY FIBER JAMB	COMP.
2	WOOD JAMB	WOOD
6	DOOR SWEEP	PVC
7	WEATHERSTRIP (ENDURA FORCE 5)	FOAM
8	WEATHERSTRIP (Q-LON)	FOAM
9	#9 x 3/4" PFH WOOD SCREW	STEEL
11	4" X 4" HINGE	STEEL
12	LATCH STRIKE PLATE	STEEL
13	DEADBOLT STRIKE PLATE	STEEL
20	INSWING THRESHOLD	ALUM/COMP
21	INSWING THRESHOLD w/ SIDELITE ADAPTER	ALUM/COMP
24	ADA THRESHOLD	ALUM
26	INSWING THRESHOLD	ALUM/WOOD
27	INSWING THRESHOLD w/ SIDELITE ADAPTER	ALUM/WOOD
33	ASTRAGAL (DLP OR ENDURA)	ALUM
40	DOOR PANEL	-
50	SIDELITE PANEL	-



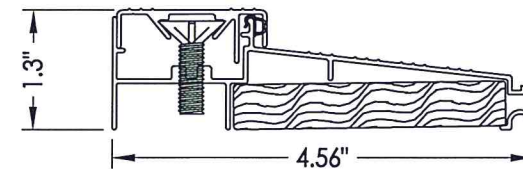
**1 POLY FIBER JAMB**



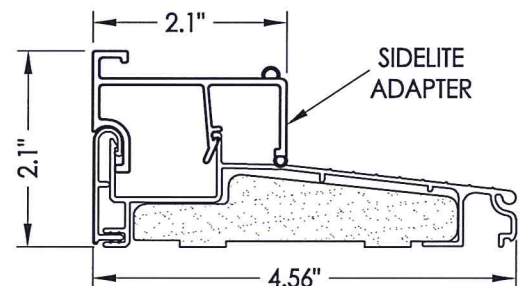
**2 WOOD JAMB**



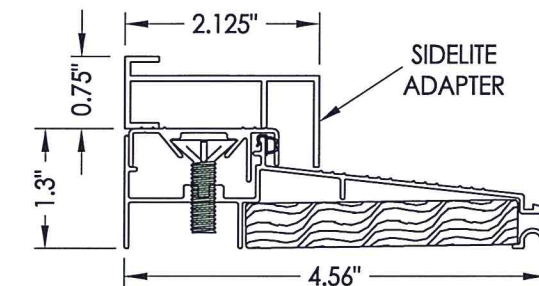
**20 INSWING THRESHOLD**  
Endura (Z-Series)



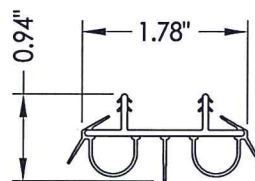
**26 INSWING THRESHOLD**  
DLP (ISCS)



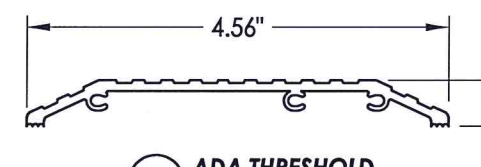
**21 INSWING THRESHOLD w/ SIDELITE ADAPTER**  
Endura (Z-Series)



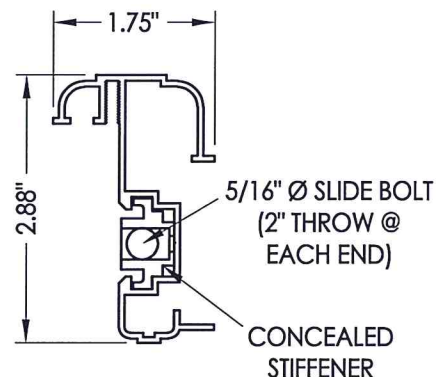
**27 INSWING THRESHOLD w/ SIDELITE ADAPTER**  
DLP (ISCS)



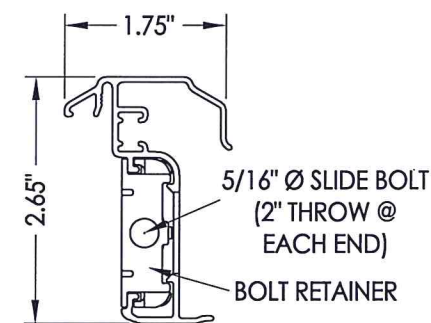
**6 SWEEP**



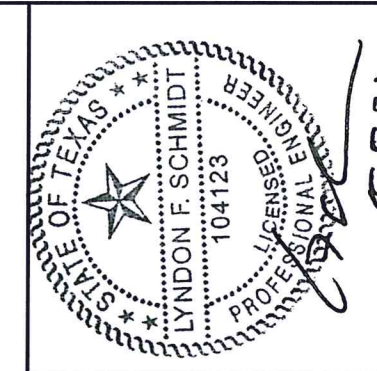
**24 ADA THRESHOLD**  
DLP



**33 DLP ASTRAGAL**  
(Latch & Deadbolt)



**33 ENDURA ASTRAGAL**  
Ultimate Hurricane (Latch & Deadbolt)  
Ultimate Trilennium (Multi-Pt. lock)



Documents Prepared By: Lyndon F. Schmidt, P.E.  
TEXAS P.E. #104123

RW BUILDING CONSULTANTS, INC.  
P.O. Box 230 Vairico FL. 33595  
Phone No.: 813.659.9197

TEXAS BOARD OF PROFESSIONAL ENGINEERS  
CERTIFICATE OF REGISTRATION # F-11852

PRODUCT: PLASTPRO FIBERGLASS DOOR  
PART OR ASSEMBLY: BILL OF MATERIALS & COMPONENTS

NO.	DATE	DESCRIPTION	LFS	BY
1	5/05/20	UPDATE TO 2018 IBC/IRC CODE		

DATE: 1/13/16  
SCALE: N.T.S.  
DWG. BY: JK  
CHK. BY: LFS  
DRAWING NO.: TX-4597  
SHEET 8 OF 8

**CONCRETE ANCHOR NOTES:**

- Concrete anchor locations at the corners may be adjusted to maintain the min. edge distance to mortar joints.
- Concrete anchor locations noted as "MAX. ON CENTER" must be adjusted to maintain the min. edge distance to mortar joints, additional concrete anchors may be required to ensure the "MAX. ON CENTER" dimension are not exceeded.
- Concrete anchor table:

ANCHOR TYPE	ANCHOR SIZE	MIN. EMBEDMENT	MIN. CLEARANCE TO MASONRY EDGE	MIN. CLEARANCE TO ADJACENT ANCHOR
ITW BUILDEX TAPCON®	3/16"	1-1/4"	3"	1-1/2"
	1/4"	1-1/4"	2"	4"
ELCO ULTRACON®	1/4"	1-1/4"	1"	4"

- Concrete: 3,000 psi min. conforming to ACI 301.

**WOOD SCREW INSTALLATION NOTES:**

- Maintain a minimum 5/8" edge distance, 1" end distance, & 1" o.c. spacing of wood screws to prevent the splitting of wood.