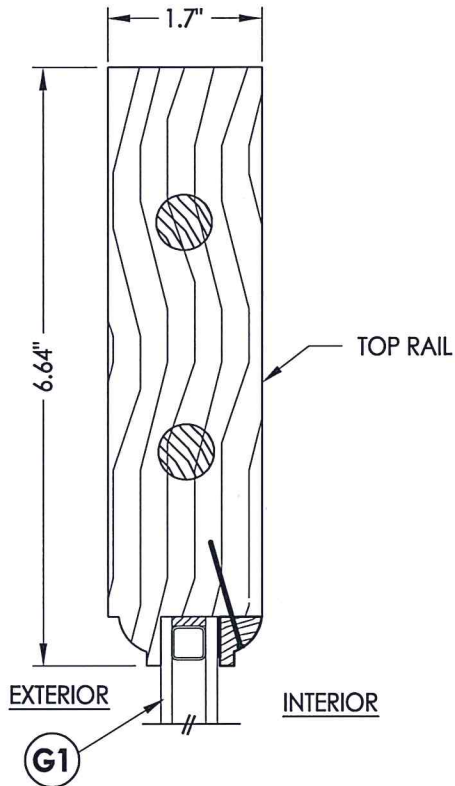
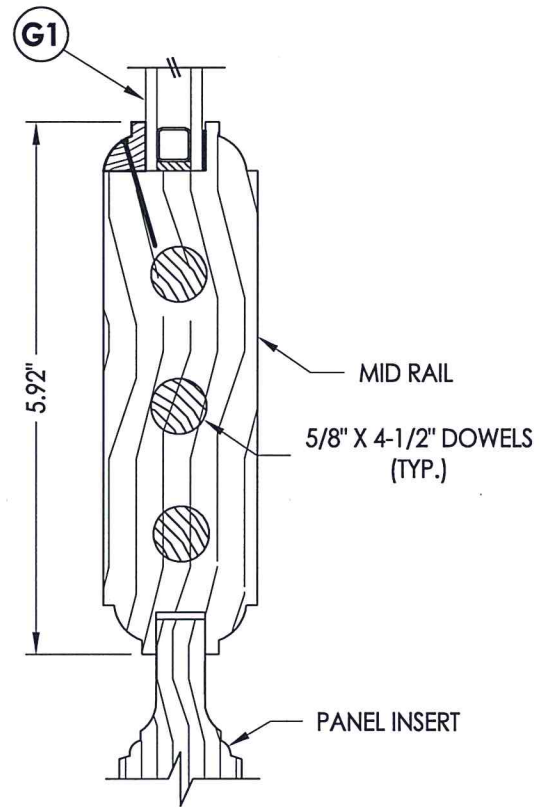


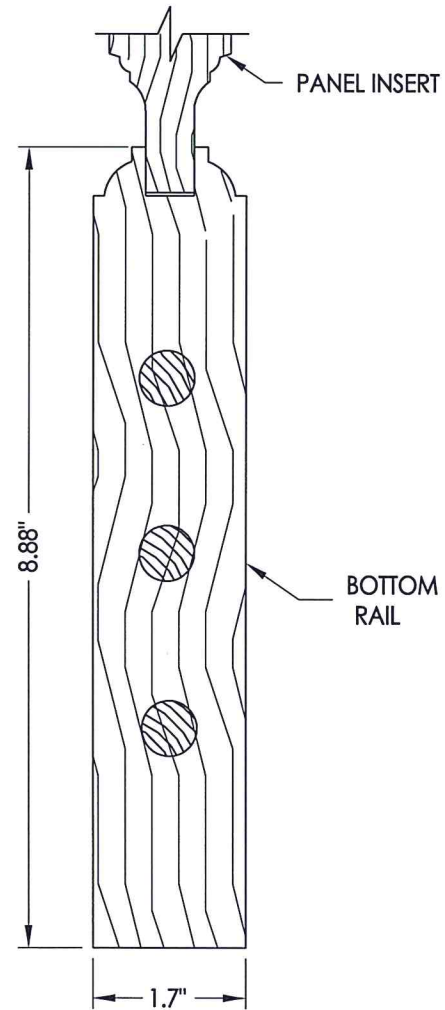
1
2 HORIZONTAL CROSS SECTION



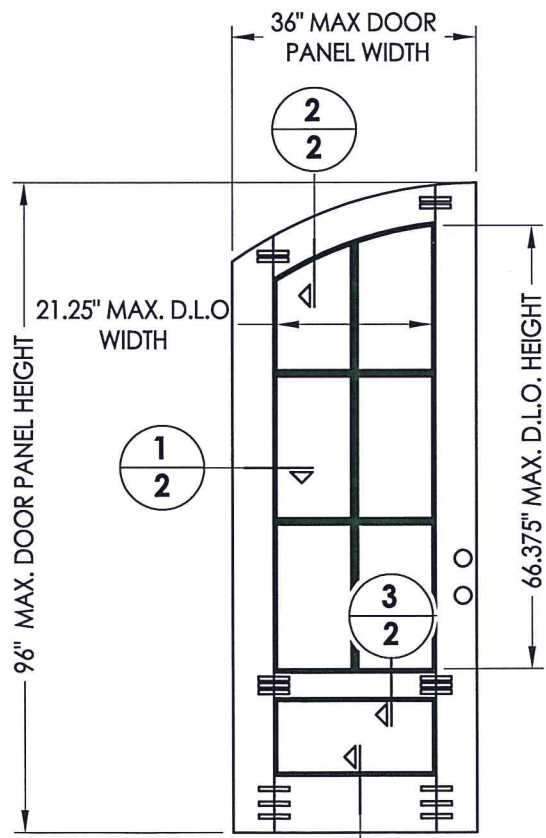
2
2 VERTICAL CROSS SECTION



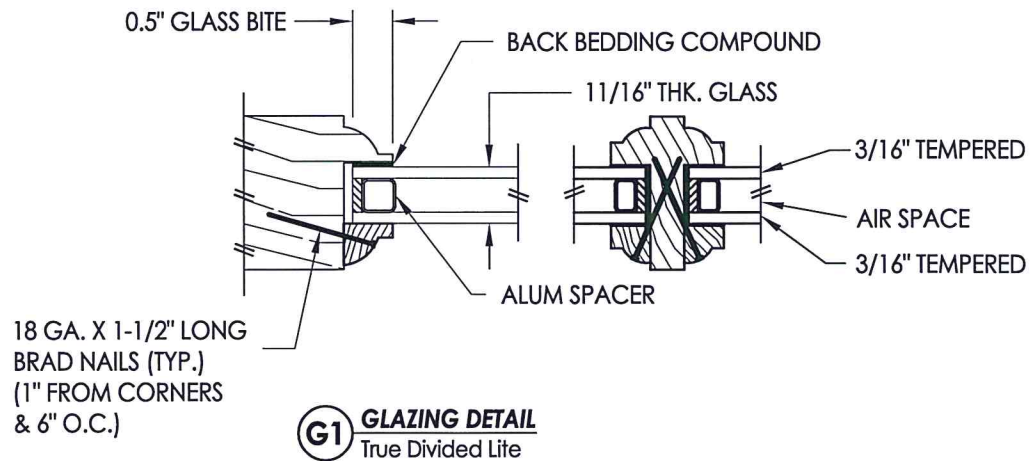
3
2 VERTICAL CROSS SECTION



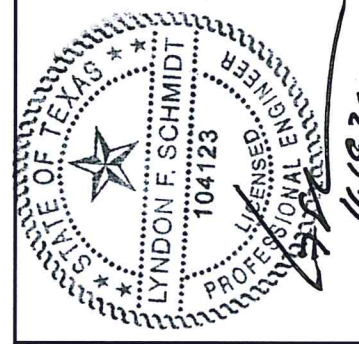
4
2 VERTICAL CROSS SECTION



40
2 DOOR PANEL Arch Top



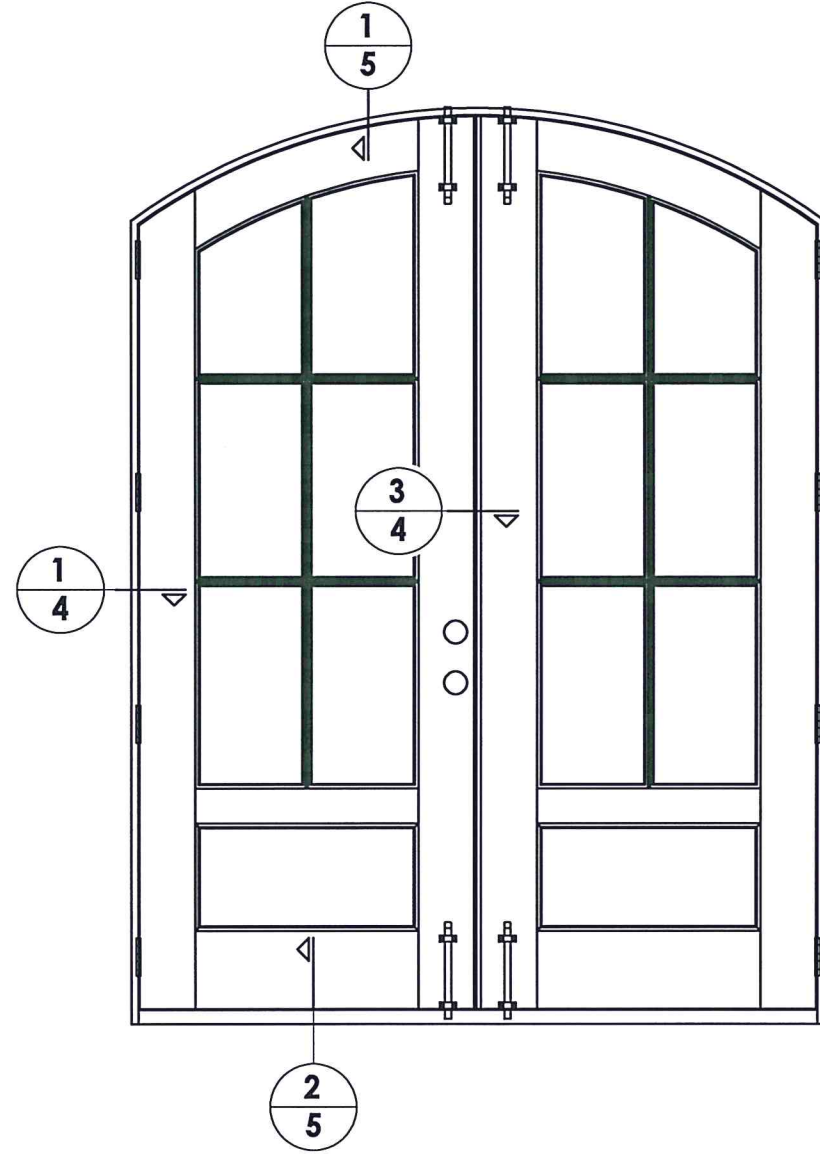
G1 GLAZING DETAIL True Divided Lite



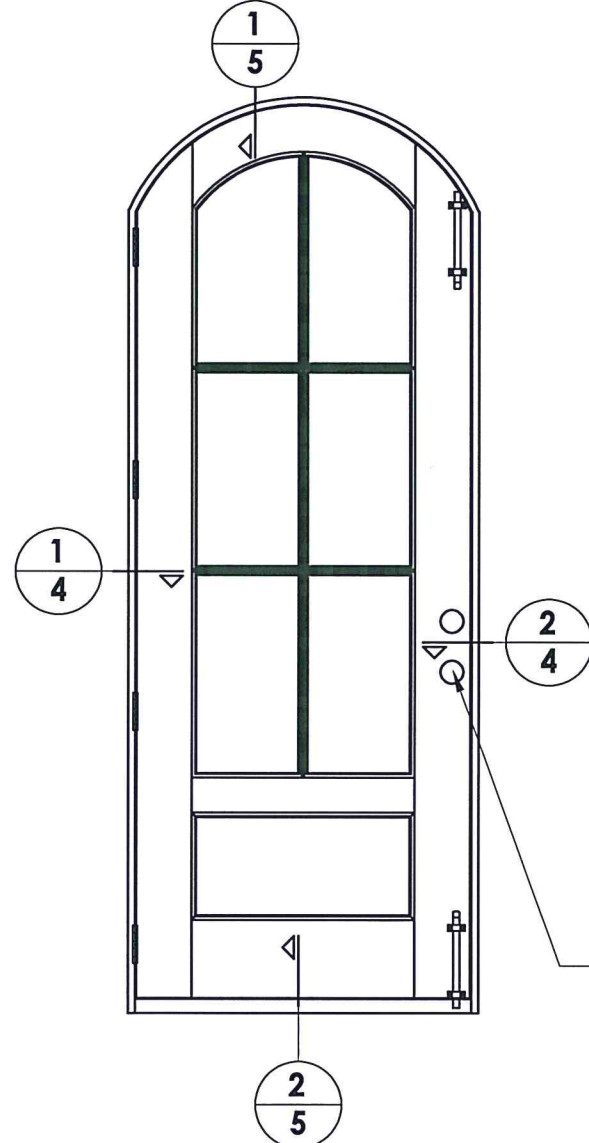
Documents Prepared By: Lyndon F. Schmidt, P.E.
TEXAS P.E. #104123

RW BUILDING CONSULTANTS, INC.
P.O. Box 230 Valrico FL, 33595
Phone No.: 813.659.9197
TEXAS BOARD OF PROFESSIONAL ENGINEERS
CERTIFICATE OF REGISTRATION # F-11852

PRODUCT:	STEVES AND SONS WOOD DOOR	
PART OR ASSEMBLY:	DOOR PANEL & GLAZING DETAILS	
NO.	DATE	BY
1	11/19/20	LFS
UPDATE TO 2018 IBC/IRC		
REVISIONS		
DATE:	9/29/15	
SCALE:	N.T.S.	
DWG. BY:	JK	
CHK. BY:	LFS	
DRAWING NO.:	TX-4565	
SHEET	2 OF 7	



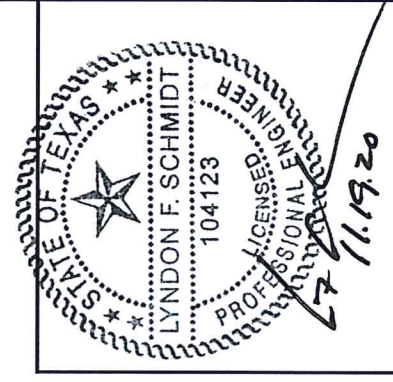
XX



X

SEE HARDWARE CHART
(TYP.)

HARDWARE TABLE	
MANUFACTURER	MODEL
DEXTER	KNOB: "J" Series DEADBOLT: "J" Series



Documents Prepared By: Lyndon F. Schmidt, P.E.
TEXAS P.E. #104123

RW BUILDING CONSULTANTS, INC.
P.O. Box 230 Valrico FL, 33595
Phone No.: 813.659.9197

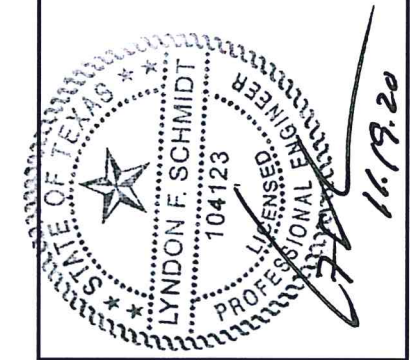
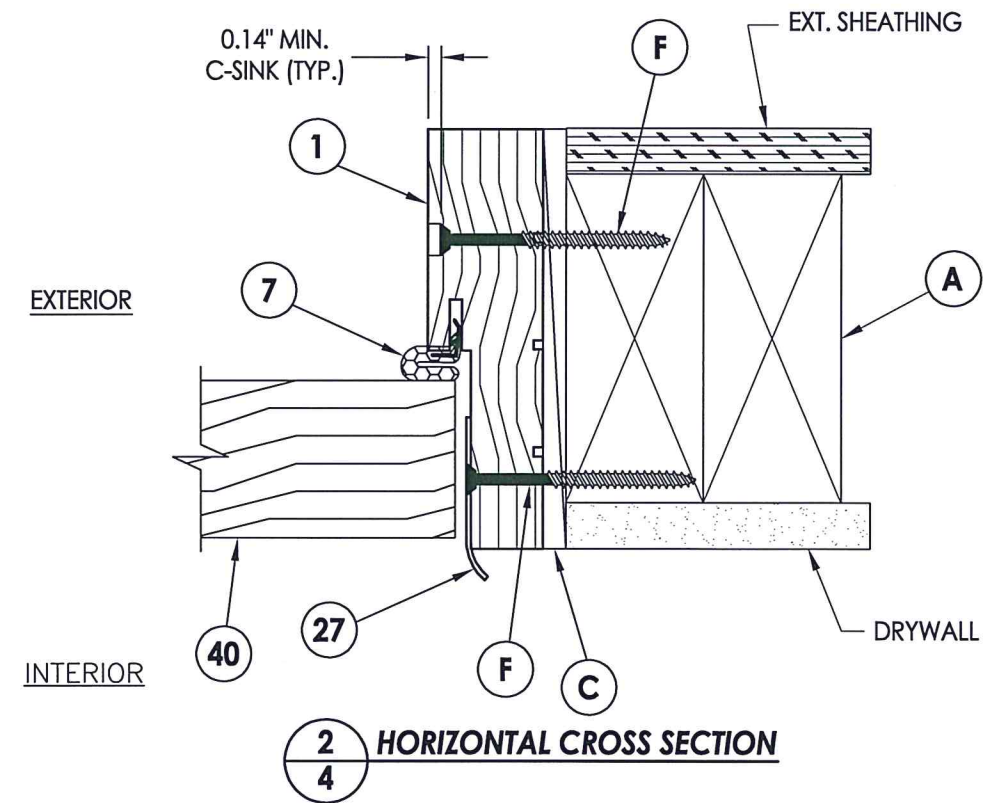
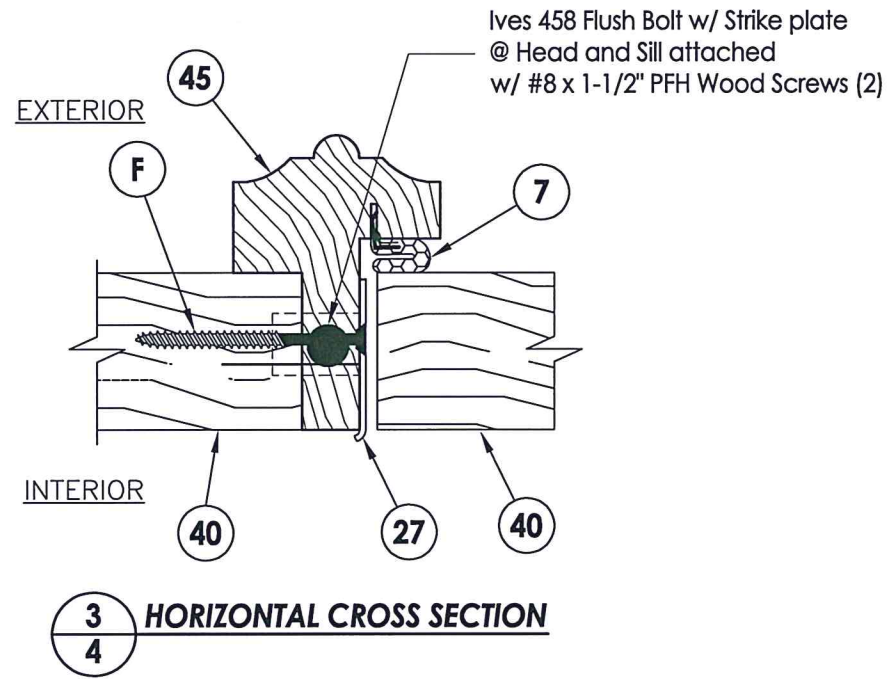
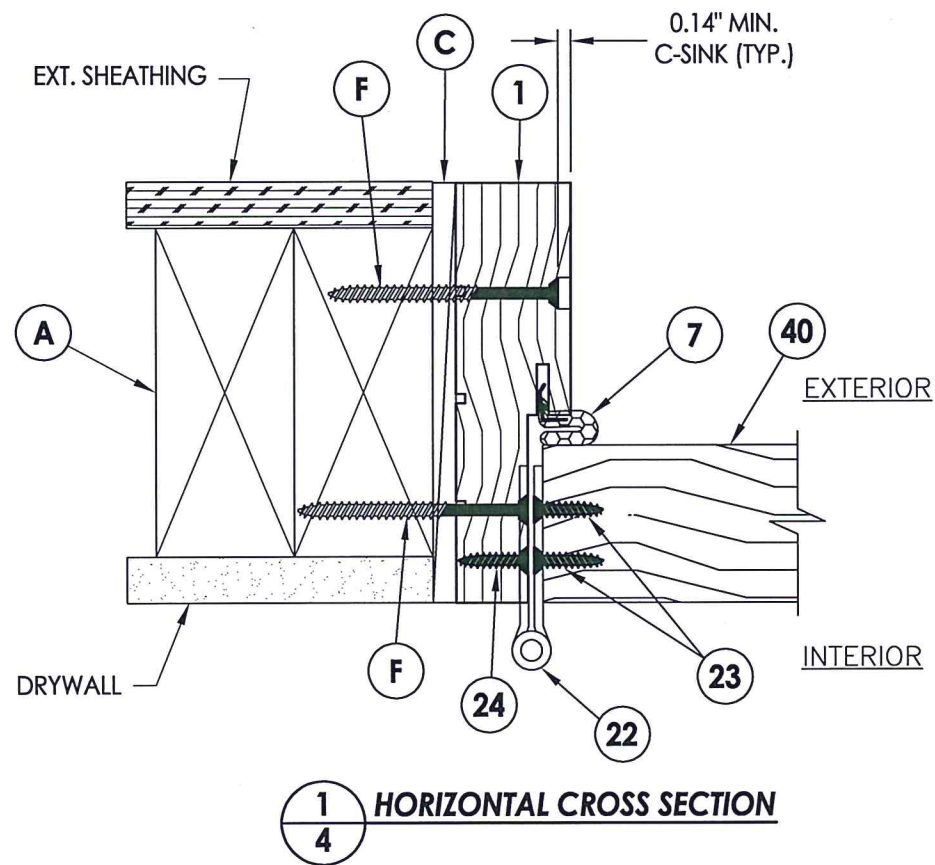
TEXAS BOARD OF PROFESSIONAL ENGINEERS
CERTIFICATE OF REGISTRATION # F-11852

PRODUCT: STEVES AND SONS
WOOD DOOR

PART OR ASSEMBLY:
ELEVATIONS

NO.	DATE	REVISIONS
1	11/19/20	UPDATE TO 2018 IBC/IRC
		LFS
		BY

DATE: 9/29/15
SCALE: N.T.S.
DWG. BY: JK
CHK. BY: LFS
DRAWING NO.: TX-4565
SHEET 3 OF 7

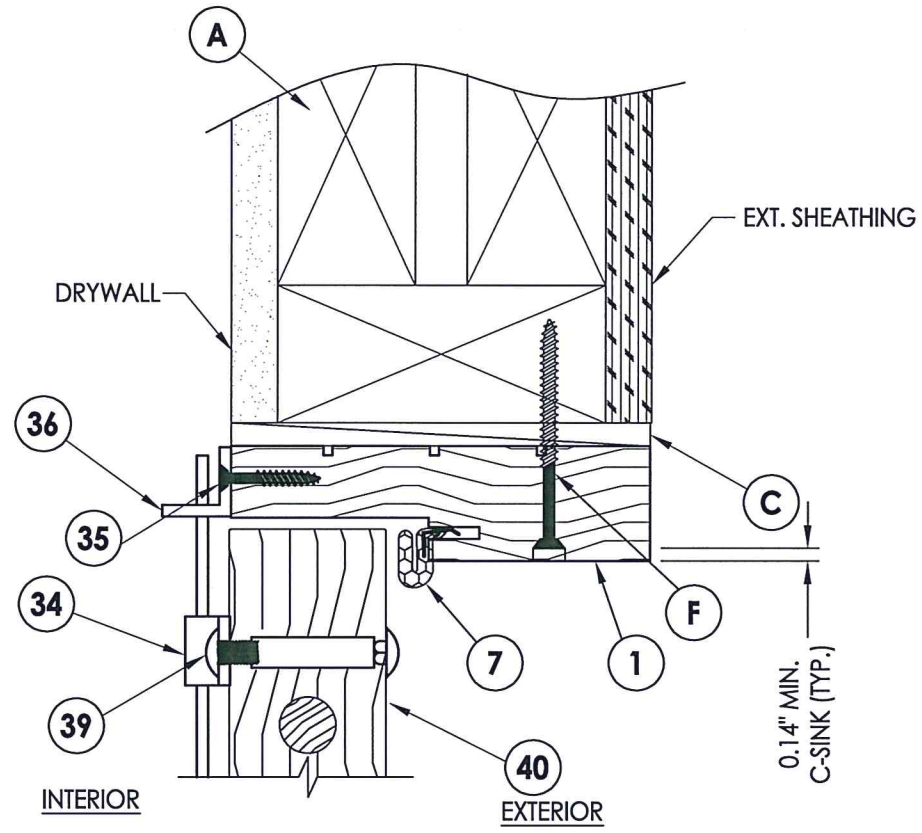


Documents Prepared By: Lyndon F. Schmidt, P.E.
TEXAS P.E. #104123

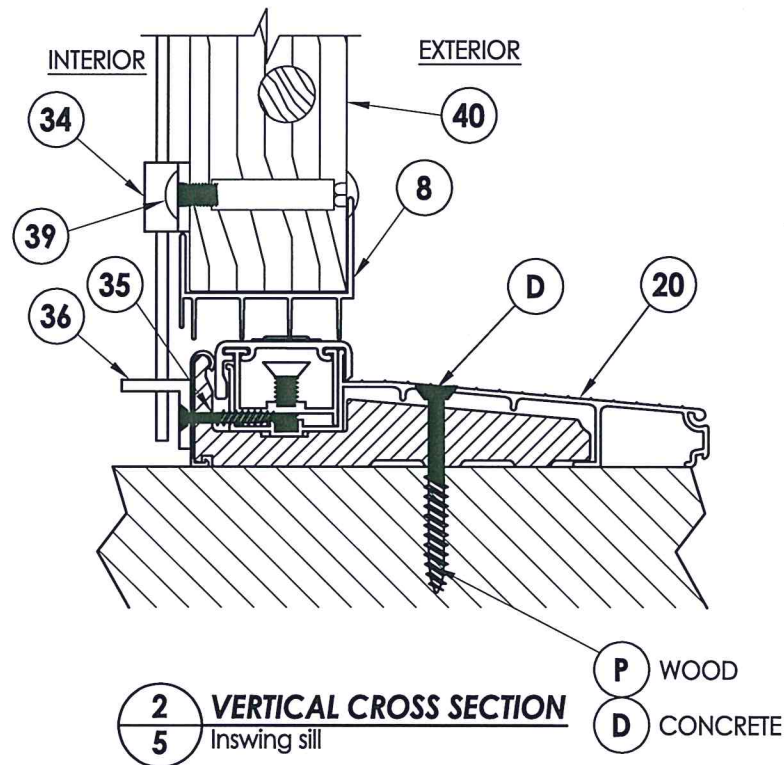
RW BUILDING CONSULTANTS, INC.
P.O. Box 230 Valrico FL, 33595
Phone No.: 813.659.9197

TEXAS BOARD OF PROFESSIONAL ENGINEERS
CERTIFICATE OF REGISTRATION # F-11852

PRODUCT: STEVES AND SONS WOOD DOOR		PART OR ASSEMBLY: HORIZONTAL CROSS SECTIONS	
NO.	DATE	BY	REVISIONS
1	11/19/20	LFS	UPDATE TO 2018 IBC/IRC
DATE			
DATE:	9/29/15		
SCALE:	N.T.S.		
DWG. BY:	JK		
CHK. BY:	LFS		
DRAWING NO.:	TX-4565		
SHEET	4	OF	7

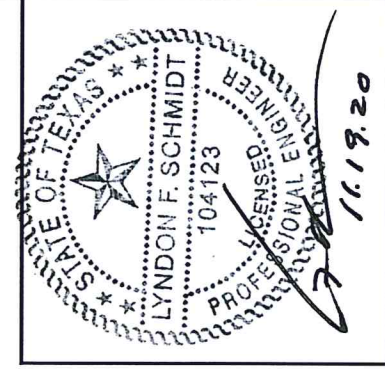


1
5 VERTICAL CROSS SECTION



2
5 VERTICAL CROSS SECTION
Inswing sill

P WOOD
D CONCRETE



Documents Prepared By: Lyndon F. Schmidt, P.E.
TEXAS P.E. #104123

RW BUILDING CONSULTANTS, INC.
P.O. Box 230 Valrico FL 33595
Phone No.: 813.659.9197
TEXAS BOARD OF PROFESSIONAL ENGINEERS
CERTIFICATE OF REGISTRATION # F-11852

PRODUCT: STEVES AND SONS
WOOD DOOR

PART OR ASSEMBLY:
VERTICAL
CROSS SECTIONS

NO.	DATE	REVISIONS
1	11/19/20	UPDATE TO 2018 IBC/IRC
		LFS
		BY

DATE: 9/29/15

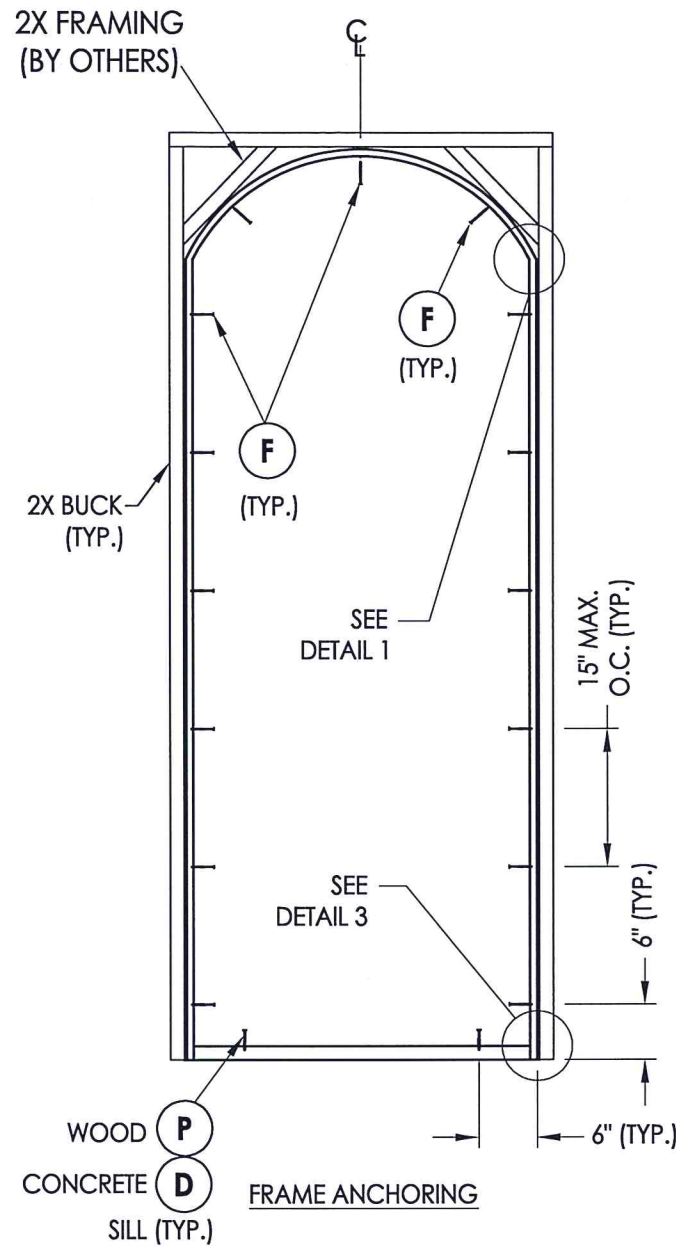
SCALE: N.T.S.

DWG. BY: JK

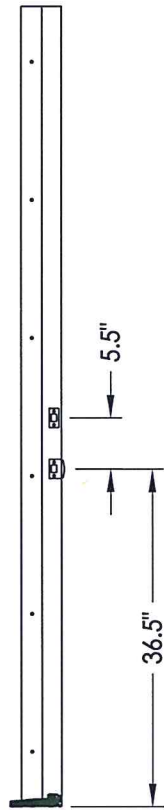
CHK. BY: LFS

DRAWING NO.:
TX-4565

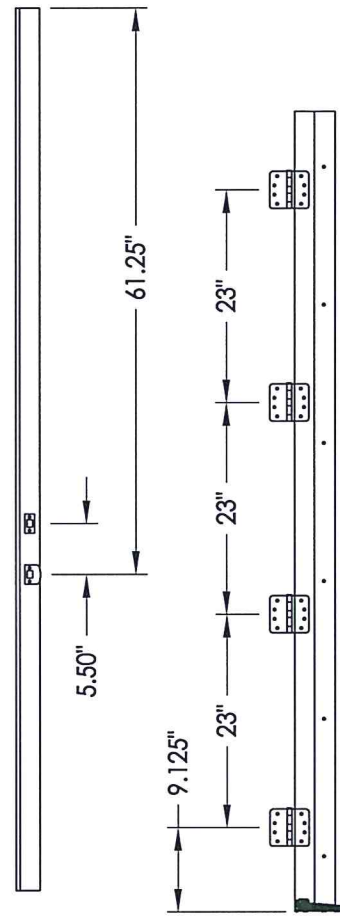
SHEET 5 OF 7



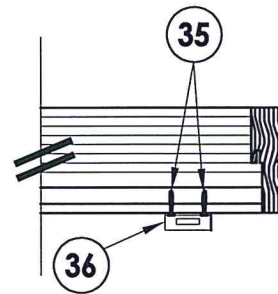
STRIKE JAMB



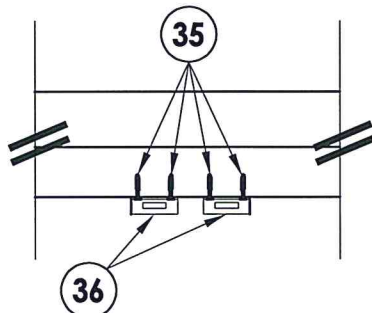
ASTRAGAL



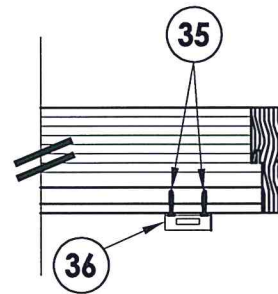
HINGE LOCATIONS



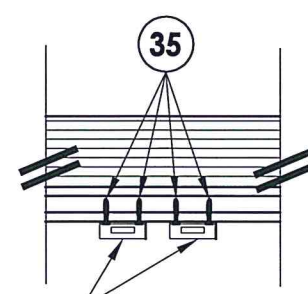
DETAIL 1
Inswing



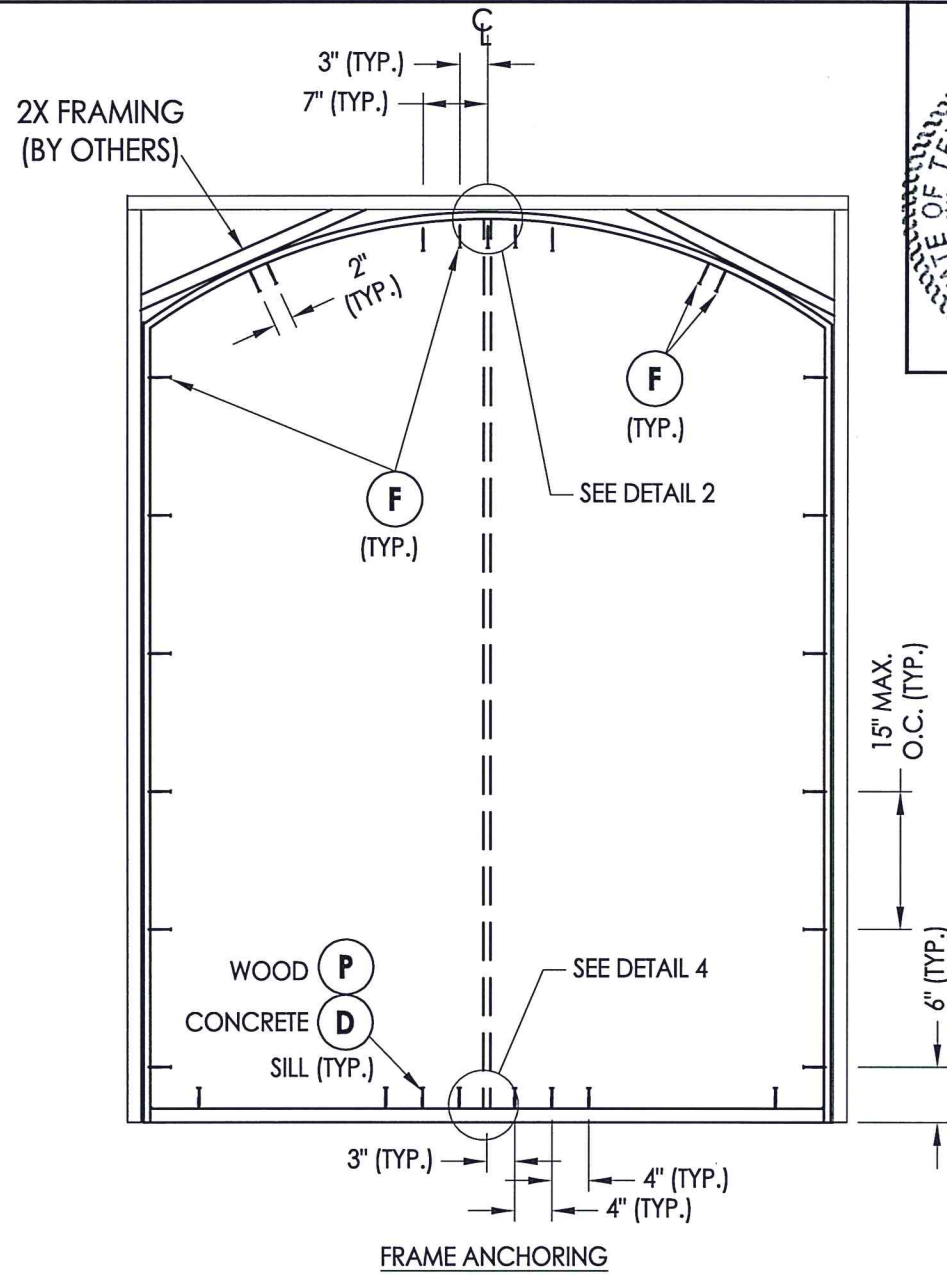
DETAIL 2
Inswing



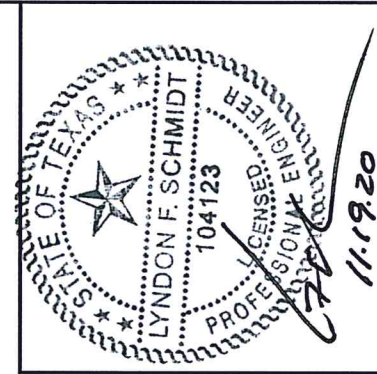
DETAIL 3
Inswing



DETAIL 4
Inswing



FRAME ANCHORING



Documents Prepared By: Lyndon F. Schmidt, P.E.
TEXAS P.E. #104123

RW BUILDING CONSULTANTS, INC.
P.O. Box 230 Valrico FL, 33595
Phone No.: 813.659.9197

REVISIONS

PRODUCT: STEVES AND SONS WOOD DOOR

PART OR ASSEMBLY: FRAME ANCHORING

NO.	DATE	DESCRIPTION	BY
1	11/19/20	UPDATE TO 2018 IBC/IRC	LFS

DATE: 9/29/15

SCALE: N.T.S.

DWG. BY: JK

CHK. BY: LFS

DRAWING NO.: TX-4565

SHEET 6 OF 7

R:\Clients\Steves and Sons - Permanent\B - Texas Dept of Ins\Hinged Doors - Wood\DR-781C - Drawings\TX-4565-68.dwg, 7.1

BILL OF MATERIALS

ITEM #	DESCRIPTION	MATERIAL
A	2X FRAMING (G >= 0.42)	WOOD
C	1/4" MAX. SHIM SPACE	-
D	1/4" PFH DeWALT OR ITW CONCRETE SCREW (1-3/4" MIN. EMBEDMENT)	STEEL
F	#8 X 2-1/2" PFH WOOD SCREW (1.15" MIN. EMBEDMENT)	STEEL
P	#10 PFH WOOD SCREW (1-3/4" MIN. EMBEDMENT)	STEEL
1	HEAD AND SIDE JAMB	WOOD
7	WEATHERSTRIP	FOAM
8	DOOR SWEEP	WOOD
20	INSWING SILL	WOOD
21	OUTSWING SILL	WOOD
22	4" x 4" HINGE	STEEL
23	#9 X 3/4" PFH WOOD SCREW	STEEL
24	#8 X 3/4" PFH WOOD SCREW	STEEL
27	LATCH STRIKE PLATE	STEEL
28	DEADBOLT STRIKE PLATE	STEEL
33	SURFACE BOLT SPACER	-
34	SURFACE BOLT (IVES 454 8" LONG)	STEEL
35	#8 X 1" PFH WOOD SCREW	STEEL
36	SURFACE BOLT GUIDE PLATE	STEEL
39	#10 X 2" SEX BOLT	STEEL
40	WOOD DOOR PANEL	-
45	ASTRAGAL (MAHOGANY)	WOOD

NOTE: WOOD DOOR COMPONENTS: MAHOGANY

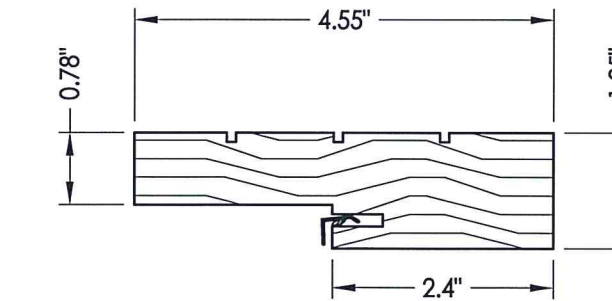
CONCRETE ANCHOR NOTES:

- Concrete anchor locations at the corners may be adjusted to maintain the min. edge distance to mortar joints.
- Concrete anchor locations noted as "MAX. ON CENTER" must be adjusted to maintain the min. edge distance to mortar joints, additional concrete anchors may be required to ensure the "MAX. ON CENTER" dimension are not exceeded.
- Concrete anchor table:

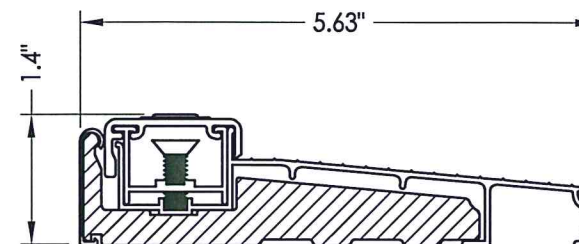
ANCHOR TYPE	ANCHOR SIZE	MIN. EMBEDMENT	MIN. CLEARANCE TO MASONRY EDGE	MIN. CLEARANCE TO ADJACENT ANCHOR
ITW TAPCON®	1/4"	1-1/4"	2"	4"
DeWALT ULTRACON+	1/4"	1-1/4"	1"	4"

WOOD SCREW INSTALLATION NOTES:

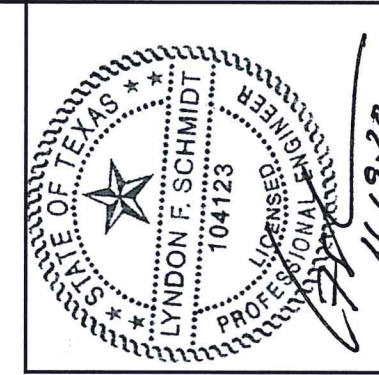
- Maintain a minimum 5/8" edge distance, 1" end distance, & 1" o.c. spacing of wood screws to prevent the splitting of wood.



1 FRAME



20 INSWING THRESHOLD



Documents Prepared By: Lyndon F. Schmidt, P.E.
TEXAS P.E. #104123

RW BUILDING CONSULTANTS, INC.
P.O. Box 230 Valrico FL 33595
Phone No.: 813.659.9197

TEXAS BOARD OF PROFESSIONAL ENGINEERS
CERTIFICATE OF REGISTRATION # F-11852

PRODUCT: STEVES AND SONS
WOOD DOOR

PART OR ASSEMBLY:
BILL OF MATERIALS
& COMPONENTS

NO.	DATE	REVISIONS
1	11/19/20	UPDATE TO 2018 IBC/IRC
LFS	BY	

DATE: 9/29/15

SCALE: N.T.S.

DWG. BY: JK

CHK. BY: LFS

DRAWING NO.: TX-4565

SHEET 7 OF 7