

WINCORE™

WINDOWS & DOORS

250 Staunton Turnpike, Parkersburg, WV 26104

400/500 Series Vinyl Fixed Window (Sidelite)

"NON-IMPACT"

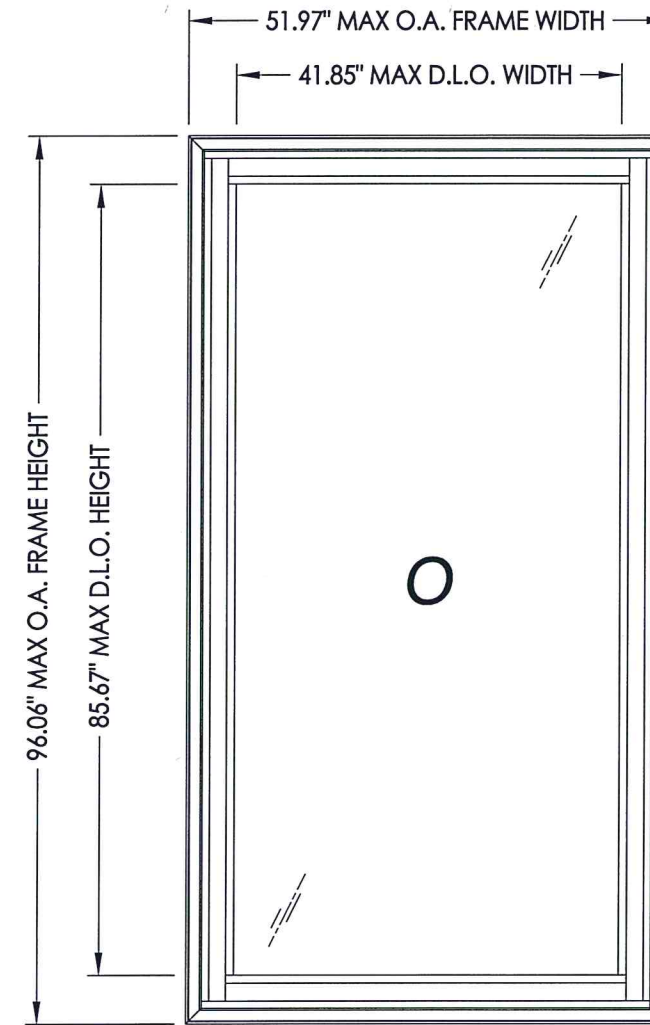
EVALUATED FOR USE IN THE STATE OF TEXAS

TDI DR-770

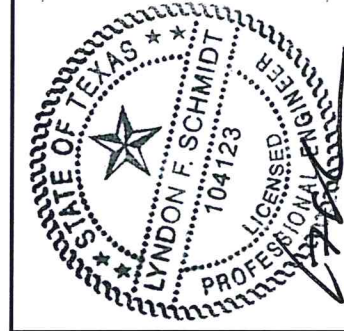
The Wincore Fixed Window described herein complies with the 2018 International Residential Code (IRC), Sections R301 & R609 and the 2018 International Building Code (IBC), Sections 1404.13, 1609, 1709.5, 2403 and 2404 subject to the following conditions:

1. Anchors shall be as listed and spaced as shown in the details. Anchor embedment to base material shall be beyond wall dressing or stucco.
2. When used in areas requiring wind-borne debris protection this product is required to be protected with an impact resistant covering that complies with Section R301.2.1.2 of the IRC and Section 1609.1.2 of the IBC.
3. Allowable design pressure requirements must be equal to or less than the design pressure rating shown in the design pressure chart, sheet 1 of this drawing.
4. Conditions not covered by this drawing are subject to further engineering analysis.

TABLE OF CONTENTS	
SHEET#	DESCRIPTION
1	Typical elevations, design pressures and general notes
2	Horizontal & vertical cross sections
3	Frame anchoring
4	Bill of materials, components and glazing details



MAX. FRAME DIMENSION	MAX. D.L.O. DIMENSION	GLASS TYPE	DESIGN PRESSURE (PSF)	
			POSITIVE	NEGATIVE
51.97" X 96.06"	41.85" X 85.67"	G1, G2	+35.0	-35.0



Documents Prepared By: Lyndon F. Schmidt, P.E.
TEXAS P.E. #104123

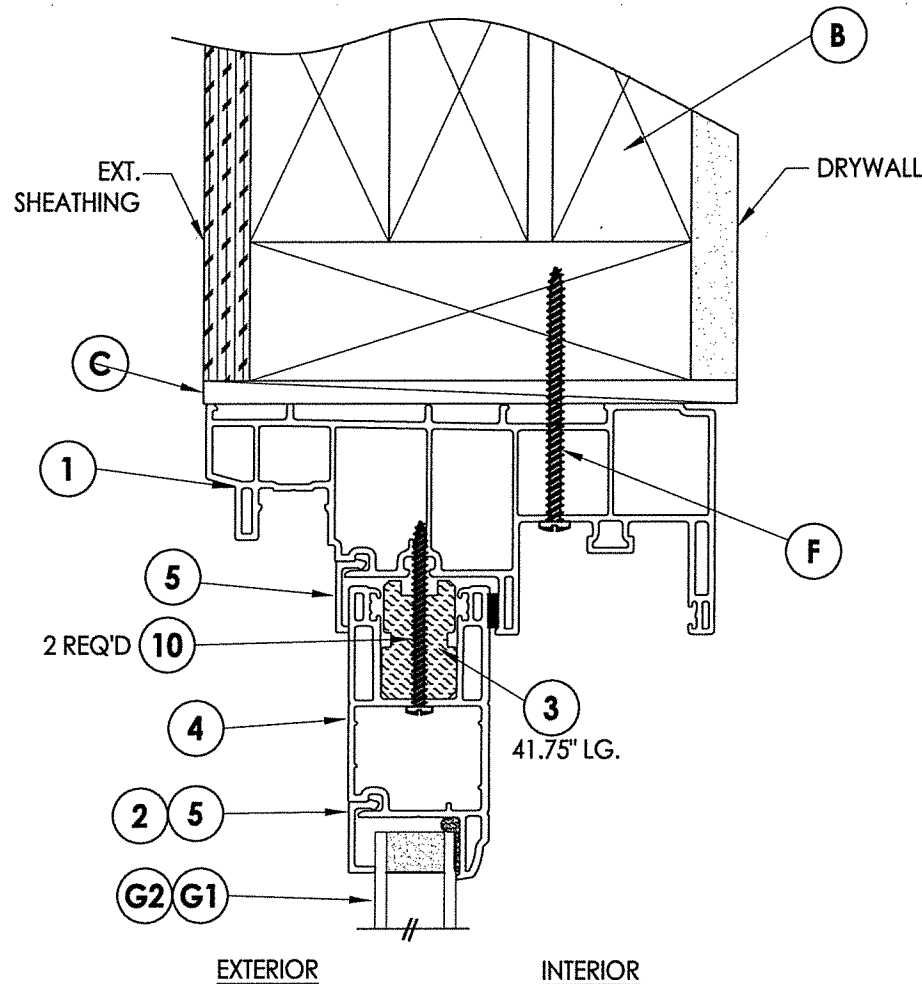
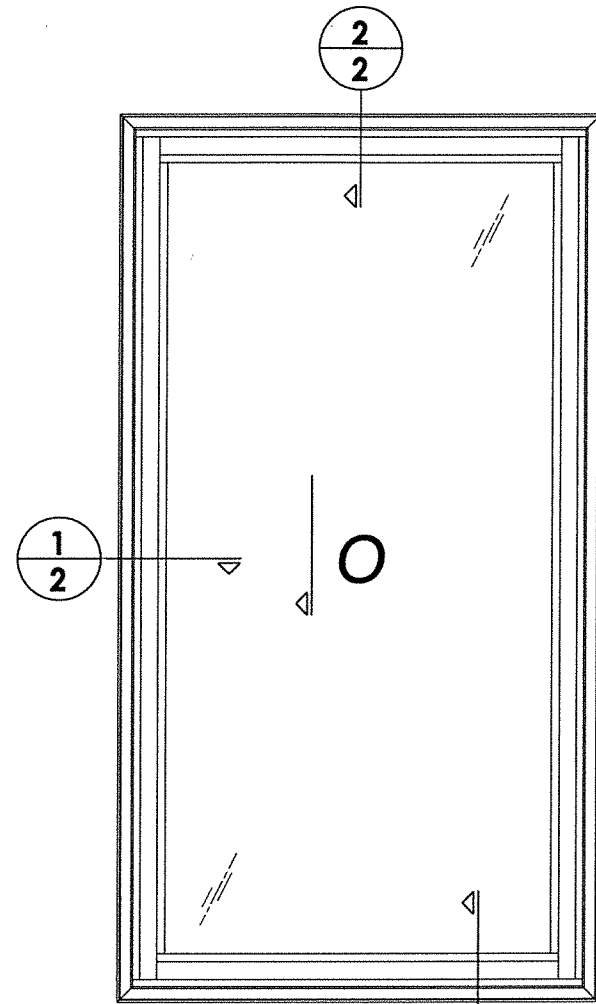
RW BUILDING CONSULTANTS, INC.
P.O. Box 230 Valrico FL 33595
Phone No.: 813.659.9197
TEXAS BOARD OF PROFESSIONAL ENGINEERS
CERTIFICATE OF REGISTRATION # F-11852

PRODUCT: 400/500 SERIES SIDELITE WINDOW
PART OR ASSEMBLY: TYPICAL ELEVATION, DESIGN PRESSURES & GENERAL NOTES

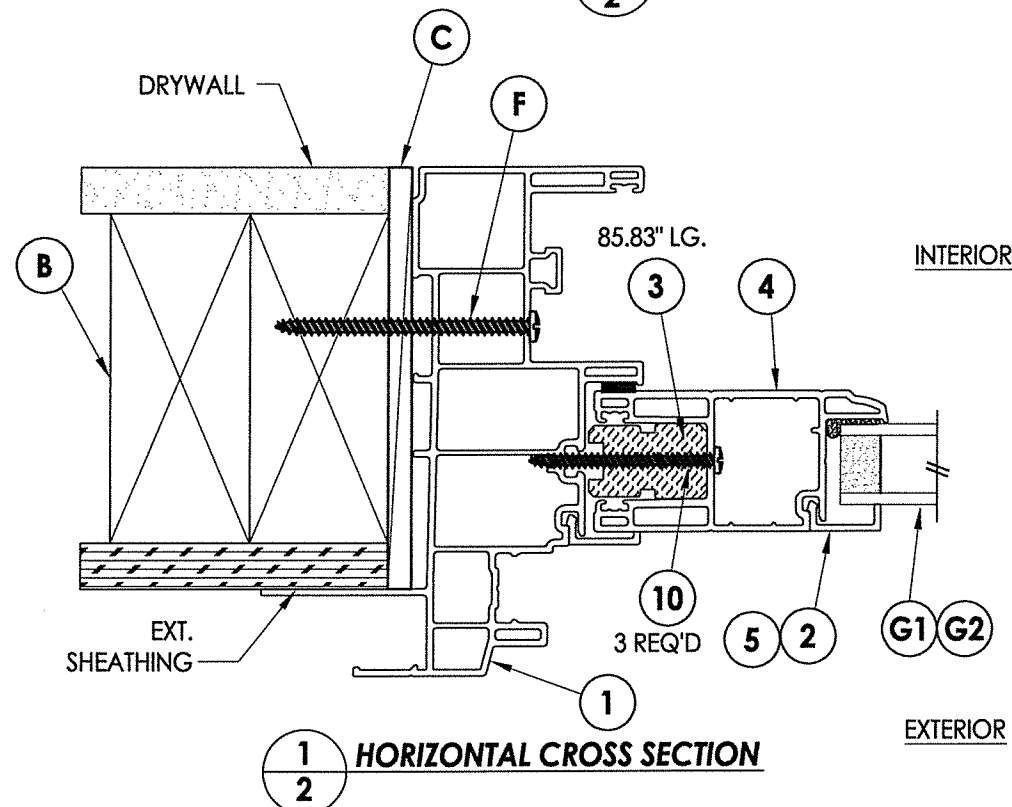
NO.	DATE	BY	REVISIONS
1	6/10/20	LFS	UPDATE TO 2018 IBC/IRC

DATE: 9/3/14
SCALE: N.T.S.
DWG. BY: JK
CHK. BY: LFS
DRAWING NO.: TX-4458
SHEET 1 OF 4

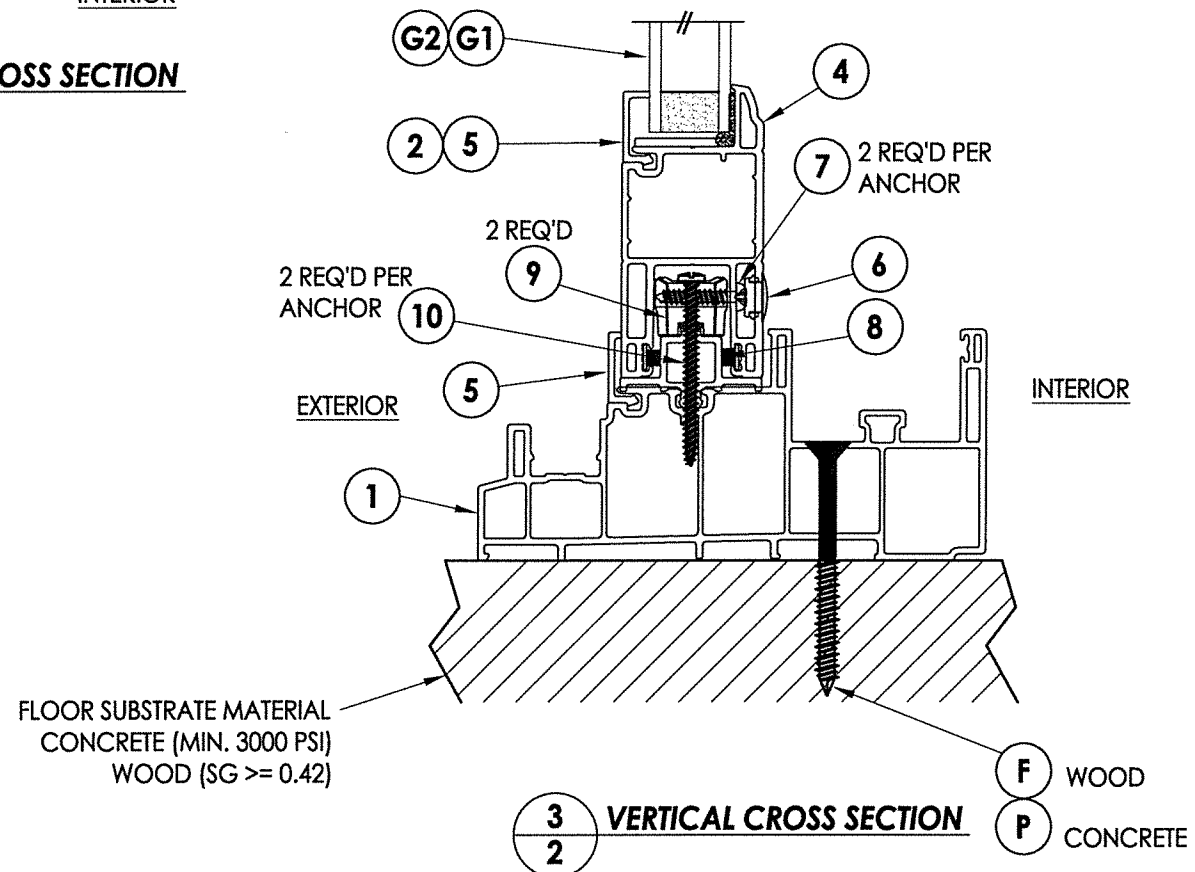
R:\Clients\Wincore PERMANENT\B - Texas Dept of Ins\Fixed Windows\DR-770 400-500 FW SIDELITE\C - Drawings\TX-4458.dwg, 2.3



2/2 VERTICAL CROSS SECTION

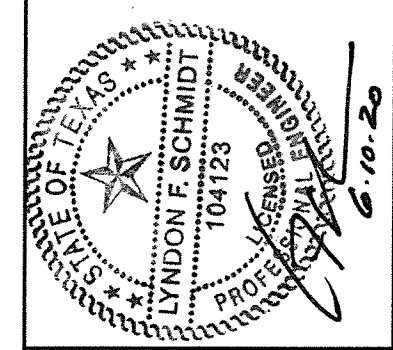


1/2 HORIZONTAL CROSS SECTION



3/2 VERTICAL CROSS SECTION

FLOOR SUBSTRATE MATERIAL
CONCRETE (MIN. 3000 PSI)
WOOD (SG >= 0.42)



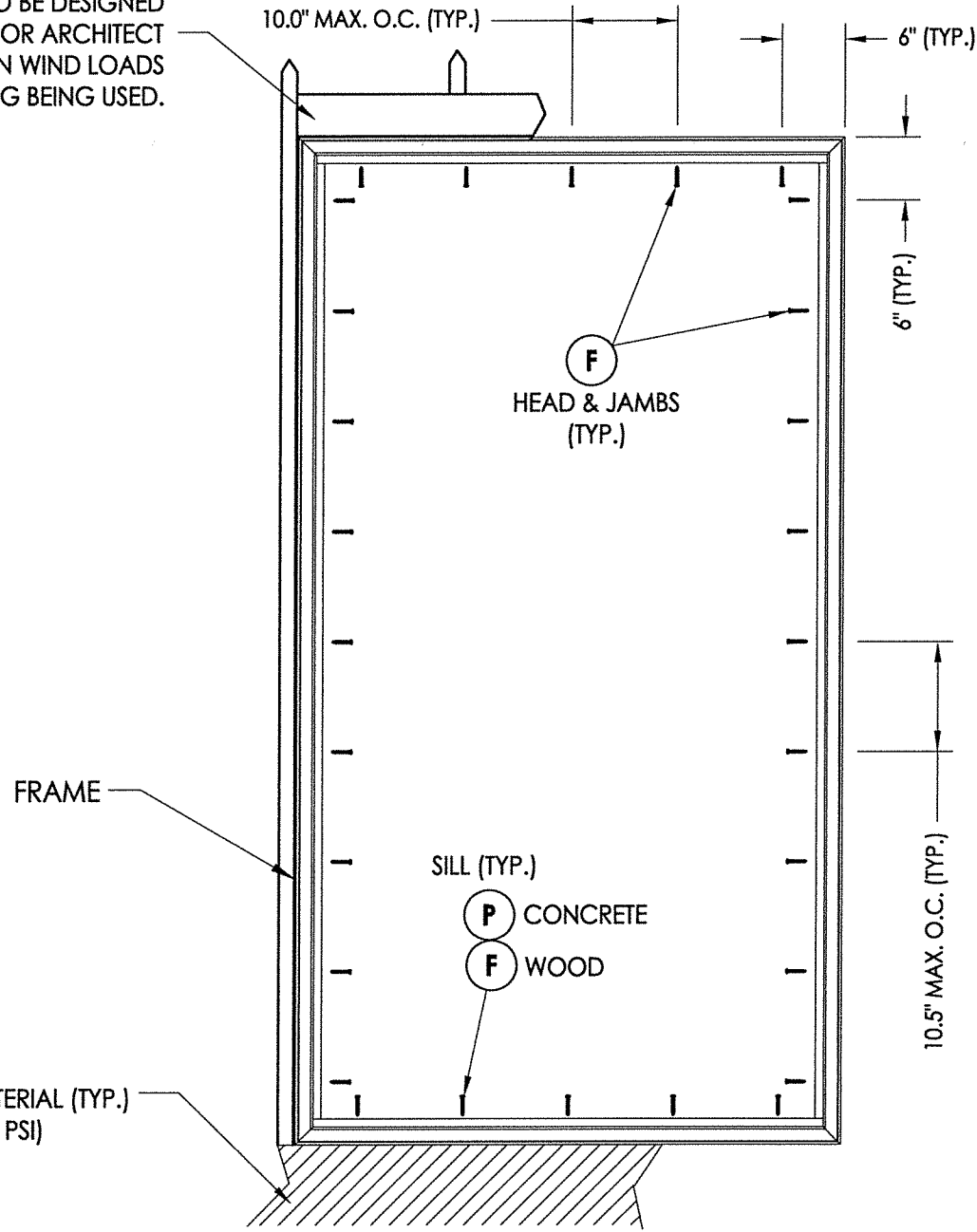
Documents Prepared By: Lyndon F. Schmidt, P.E.
TEXAS P.E. #104123
6.10.20
R.W. BUILDING CONSULTANTS, INC.
P.O. Box 230 Valrico FL 33595
Phone No.: 813.659.9197
TEXAS BOARD OF PROFESSIONAL ENGINEERS
CERTIFICATE OF REGISTRATION # F-11852

PRODUCT: 400/500 SERIES SIDELITE WINDOW
PART OR ASSEMBLY: HORIZONTAL & VERTICAL CROSS SECTIONS

NO.	DATE	DESCRIPTION	BY
1	6/10/20	UPDATE TO 2018 IBC/IRC	LFS

DATE: 9/3/14
SCALE: N.T.S.
DWG. BY: JK
CHK. BY: LFS
DRAWING NO.: TX-4458
SHEET 2 OF 4

2X FRAMING TO BE DESIGNED BY THE ENGINEER OR ARCHITECT OF RECORD BASED ON WIND LOADS AND THE CLADDING BEING USED.



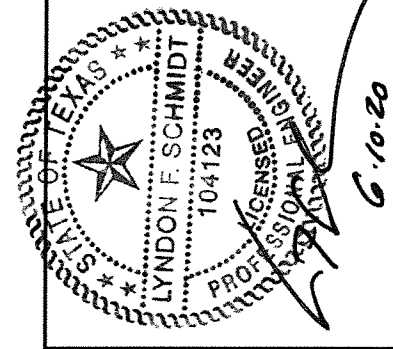
FLOOR SUBSTRATE MATERIAL (TYP.)
 CONCRETE (MIN. 3000 PSI)
 WOOD ($G \geq 0.42$)

FRAME ANCHORING

CONCRETE ANCHOR NOTES:

1. Concrete anchor locations at the corners may be adjusted to maintain the min. edge distance to mortar joints.
2. Concrete anchor locations noted as "MAX. ON CENTER" must be adjusted to maintain the min. edge distance to mortar joints, additional concrete anchors may be required to ensure the "MAX. ON CENTER" dimension are not exceeded.
3. Concrete anchor table:

ANCHOR TYPE	ANCHOR SIZE	MIN. EMBEDMENT	MIN. CLEARANCE TO MASONRY EDGE	MIN. CLEARANCE TO ADJACENT ANCHOR
ITW TAPCON®	1/4"	1-3/4"	1-1/2"	4"
ELCO ULTRACON®	1/4"	1-3/4"	1"	4"



Documents Prepared By: Lyndon F. Schmidt, P.E.
 TEXAS P.E. #104123

RW BUILDING CONSULTANTS, INC.
 P.O. Box 230 Vairico FL 33595
 Phone No.: 813.659.9197

TEXAS BOARD OF PROFESSIONAL ENGINEERS
 CERTIFICATE OF REGISTRATION # F-11852

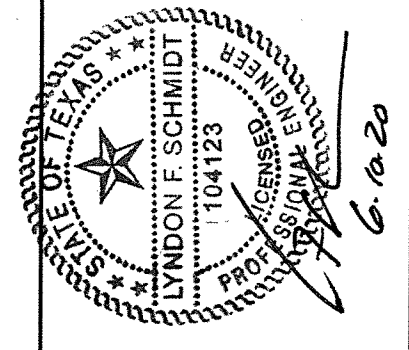
PRODUCT:	400/500 SERIES SIDELITE WINDOW
PART OR ASSEMBLY:	FRAME ANCHORING
NO.	1
DATE	6/10/20
UPDATE TO	2018 IBC/IRC
BY	LFS
REVISIONS	
DATE:	9/3/14
SCALE:	N.T.S.
DWG. BY:	JK
CHK. BY:	LFS
DRAWING NO.:	TX-4458
SHEET	3 OF 4

R:\Clients\Wincore PERMANENT\B - Texas Dept of Ins\Fixed Windows\DR-770 400-500 FW SIDELITE\B - Drawings\TX-4458.dwg, 4.3

BILL OF MATERIALS

ITEM #	DESCRIPTION	MATERIAL
B	2X FRAMING (SG >= 0.42)	WOOD
C	1/4" MAX. SHIM SPACE	-
F	#8 X 2-3/4" PH SMS (1-1/4" MIN. EMB.)	STEEL
P	1/4" X 2-1/4" PFH ELCO OR ITW CONCRETE SCREW (1-3/4" MIN. EMBEDMENT)	STEEL
1	FRAME (8090)*	PVC
2	3/4" GLAZING BEAD (5772)*	PVC
3	WOOD BLOCK ANCHOR (9882)	WOOD
4	FIXED SASH (7587)*	PVC
5	1" GLAZING BEAD (5771)*	PVC
6	BUTTON CAP (9667)*	PVC
7	#8 X 7/8" PH SMS	STEEL
8	BOTTOM FIXED PANEL SUPPORT (8001)*	PVC
9	ANCHOR BLOCK (7003)	-
10	#8 X 2" TRUSS HEAD, QUADREX SCREW	STEEL

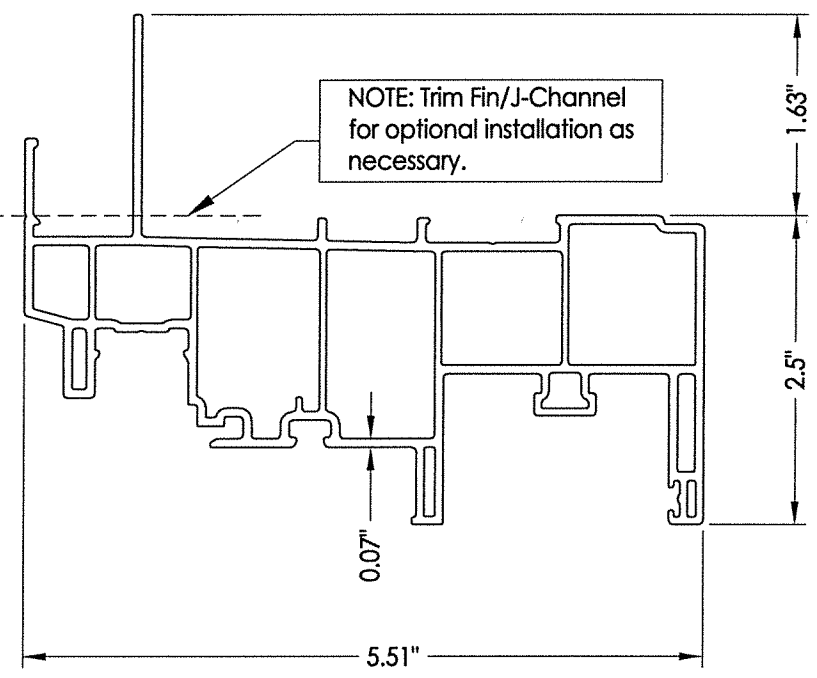
* THE APPROVED WHITE RIGID PVC EXTERIOR EXTRUSIONS FOR WINDOWS ARE TO BE PRODUCED BY EXTRUDERS LICENSEES IN "AAMA CERTIFICATION PROGRAMS FOR RIGID PVC EXTRUSIONS".



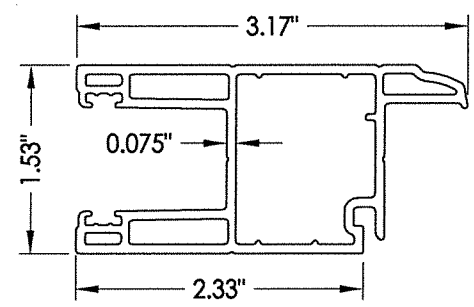
Documents Prepared By: Lyndon F. Schmidt, P.E.
TEXAS P.E. #104123

R.W. BUILDING CONSULTANTS, INC.
P.O. Box 230 Valrico FL 33595
Phone No.: 813.659.9197

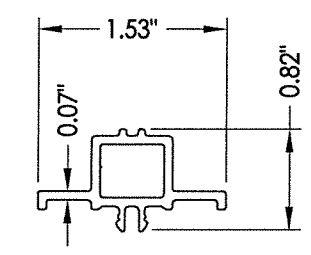
TEXAS BOARD OF PROFESSIONAL ENGINEERS
CERTIFICATE OF REGISTRATION # F-11852



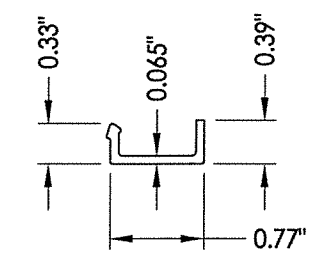
1 FRAME



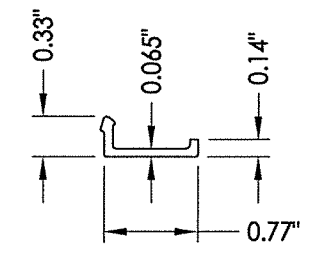
4 FIXED SASH



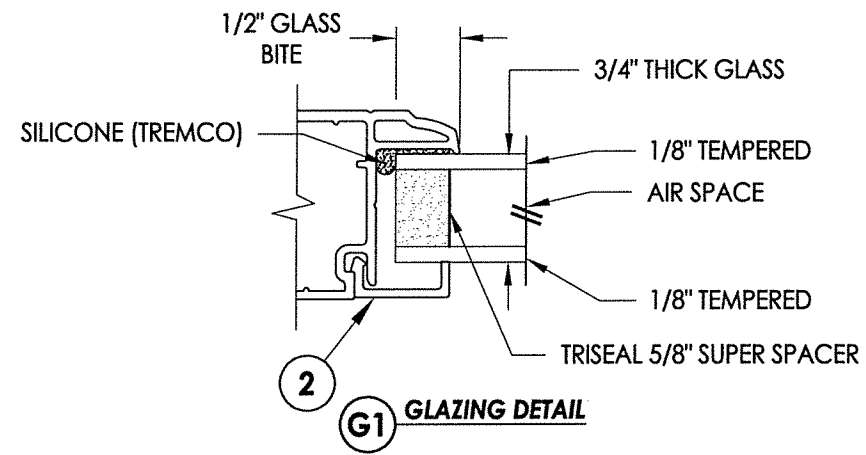
8 BOTTOM FIXED PANEL SUPPORT



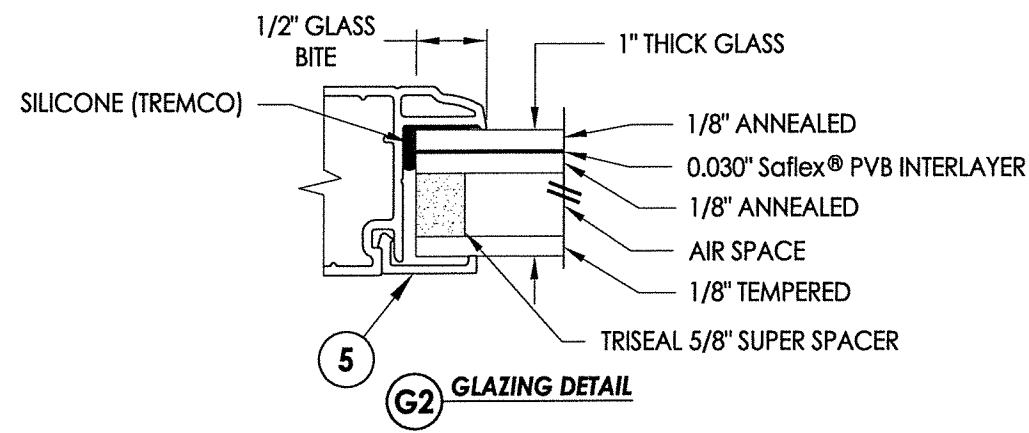
2 3/4" GLAZING BEAD



5 1" GLAZING BEAD



G1 GLAZING DETAIL



G2 GLAZING DETAIL

PRODUCT: 400/500 SERIES SIDELITE WINDOW

PART OR ASSEMBLY: BILL OF MATERIALS, COMPONENTS AND GLAZING DETAILS

NO.	DATE	DESCRIPTION	BY
1	6/10/20	UPDATE TO 2018 IBC/IRC	LFS

DATE: 9/3/14

SCALE: N.T.S.

DWG. BY: JK

CHK. BY: LFS

DRAWING NO.: TX-4458

SHEET 4 OF 4