

REVISIONS			
REV	DESCRIPTION	DATE	APPROVED
A	ADDED STRIKE AND GLASS DETAILS	01/06/16	R.L.

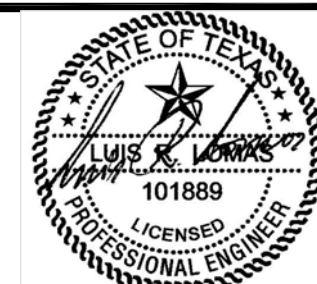
NOTES:

1. THE PRODUCT SHOWN HEREIN IS DESIGNED AND MANUFACTURED TO COMPLY WITH REQUIREMENTS OF THE 2006 IBC AND 2006 IRC WITH STATE OF TEXAS MODIFICATIONS.
2. WOOD FRAMING, METAL STRUCTURE AND MASONRY OPENING TO BE DESIGNED AND ANCHORED TO PROPERLY TRANSFER ALL LOADS TO STRUCTURE. FRAMING AND MASONRY OPENING IS THE RESPONSIBILITY OF THE ARCHITECT OR ENGINEER OF RECORD.
3. 1X BUCK OVER MASONRY/CONCRETE IS OPTIONAL. WHERE 1X BUCK IS NOT USED DISSIMILAR MATERIALS MUST BE SEPARATED WITH APPROVED COATING OR MEMBRANE. SELECTION OF COATING OR MEMBRANE IS THE RESPONSIBILITY OF THE ARCHITECT OR ENGINEER OF RECORD.
4. ALLOWABLE STRESS INCREASE OF 1/3 WAS NOT USED IN THE DESIGN OF THE PRODUCT SHOWN HEREIN. WIND LOAD DURATION FACTOR Cd=1.6 WAS USED FOR WOOD ANCHOR CALCULATIONS.
5. FRAME MATERIAL: COMPOSITE OR WOOD
DOOR SKIN MATERIAL: STEEL .033" THICK (MINIMUM), FIBERGLASS .085" THICK (MINIMUM).
6. UNITS MUST BE GLAZED PER ASTM E1300-04, SEE SHEET 8 FOR GLASS DETAILS.
7. APPROVED IMPACT PROTECTIVE SYSTEM IS REQUIRED FOR THIS PRODUCT IN WIND BORNE DEBRIS REGIONS.
8. SHIM AS REQUIRED AT EACH INSTALLATION ANCHOR WITH LOAD BEARING SHIM. SHIM WHERE SPACE OF 1/16" OR GREATER OCCURS. MAXIMUM ALLOWABLE SHIM STACK TO BE 1/4".
9. FOR ANCHORING INTO WOOD FRAMING OR 2X BUCK USE #10 WOOD SCREWS WITH SUFFICIENT LENGTH TO ACHIEVE A 1 3/8" MINIMUM EMBEDMENT INTO SUBSTRATE. LOCATE ANCHORS AS SHOWN IN ELEVATIONS AND INSTALLATION DETAILS.
10. FOR ANCHORING INTO MASONRY/CONCRETE USE 3/16" TAPCONS WITH SUFFICIENT LENGTH TO ACHIEVE A 1 1/4" MINIMUM EMBEDMENT INTO SUBSTRATE WITH 2 1/2" MINIMUM EDGE DISTANCE. LOCATE ANCHORS AS SHOWN IN ELEVATIONS AND INSTALLATION DETAILS.
11. FOR ANCHORING INTO METAL STRUCTURE USE #10 SMS OR SELF DRILLING SCREWS WITH SUFFICIENT LENGTH TO ACHIEVE 3 THREADS MINIMUM BEYOND STRUCTURE INTERIOR WALL. LOCATE ANCHORS AS SHOWN IN ELEVATIONS AND INSTALLATION DETAILS.
12. ALL FASTENERS TO BE CORROSION RESISTANT.
13. INSTALLATION ANCHORS SHALL BE INSTALLED IN ACCORDANCE WITH ANCHOR MANUFACTURER'S INSTALLATION INSTRUCTIONS AND ANCHORS SHALL NOT BE USED IN SUBSTRATES WITH STRENGTHS LESS THAN THE MINIMUM STRENGTH SPECIFIED BELOW:
 - A. WOOD – MINIMUM SPECIFIC GRAVITY OF G=0.42
 - B. CONCRETE – MINIMUM COMPRESSIVE STRENGTH OF 3,192 PSI.
 - C. MASONRY – STRENGTH CONFORMANCE TO ASTM C-90, GRADE N, TYPE 1 (OR GREATER).
 - D. METAL STRUCTURE: STEEL 18GA, 33KSI OR ALUMINUM 6063-T5 1/8" THICK MINIMUM

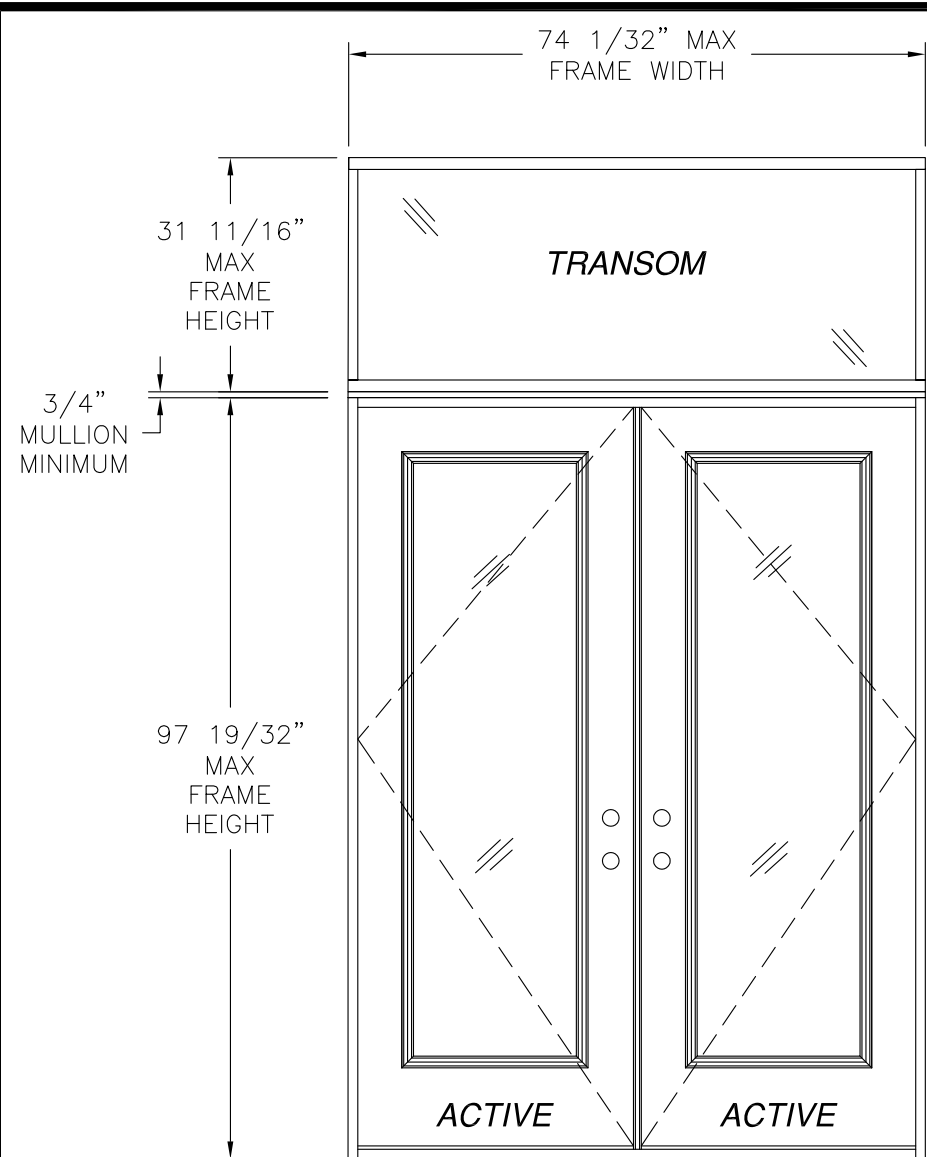
SIGNED: 01/07/2016

TABLE OF CONTENTS	
SHEET NO.	DESCRIPTION
1	NOTES
2	ELEVATION AND ANCHOR LAYOUT
3 – 8	INSTALLATION DETAILS

PROVIA DOOR, INC. 2150 STATE ROUTE 39 SUGARCREEK, OH 44681		
STEEL/FIBERGLASS INSWING GLAZED DOUBLE DOOR W/TRANSOM NON-IMPACT COMPOSITE/WOOD FRAME NOTES		
DRAWN: V.L.	DWG NO. 08-02401	REV A
SCALE NTS	DATE 07/21/14	SHEET 1 OF 8

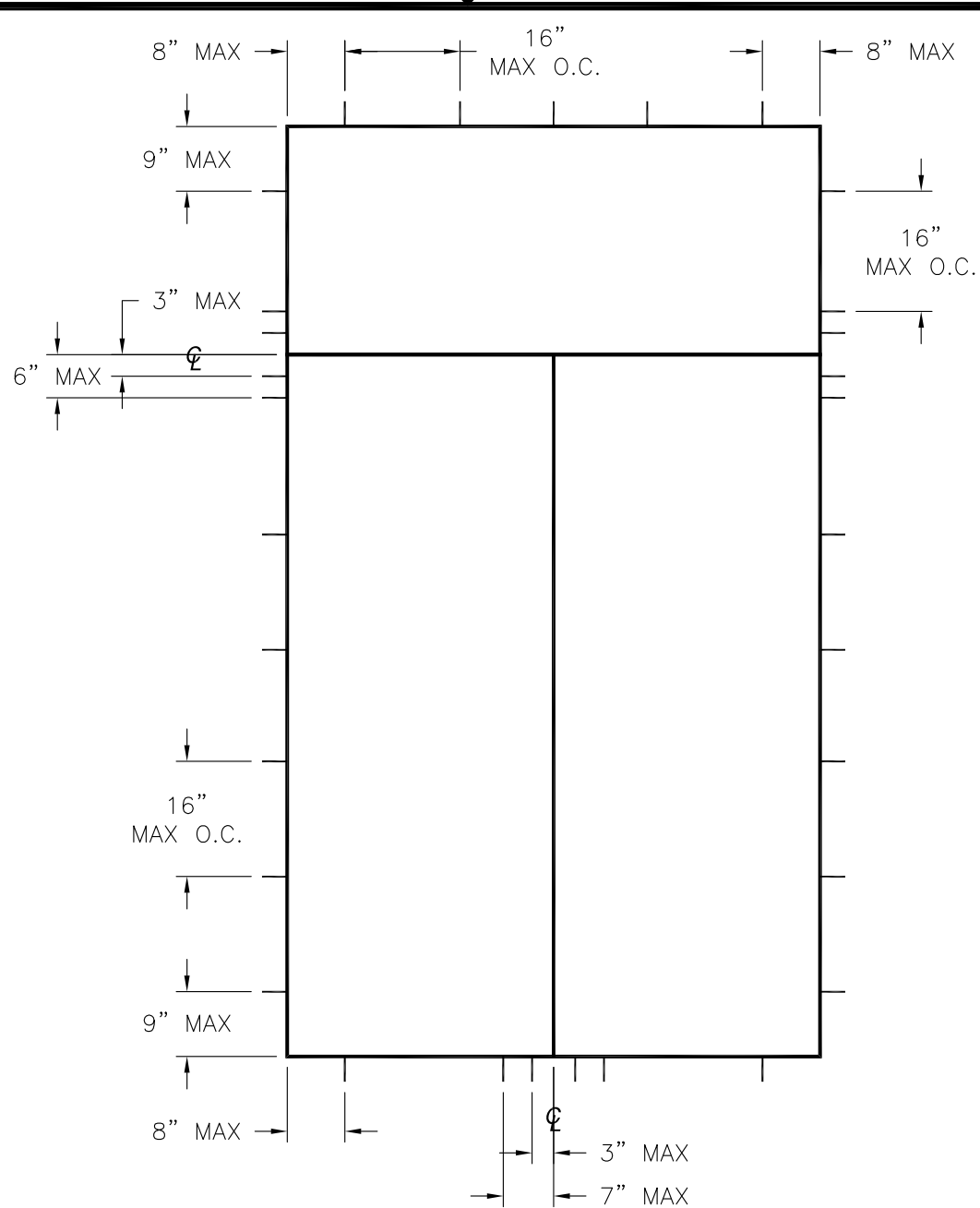


Luis R. Lomas P.E.
TX No.: 101889



DOUBLE DOOR W/ TRANSOM
EXTERIOR VIEW

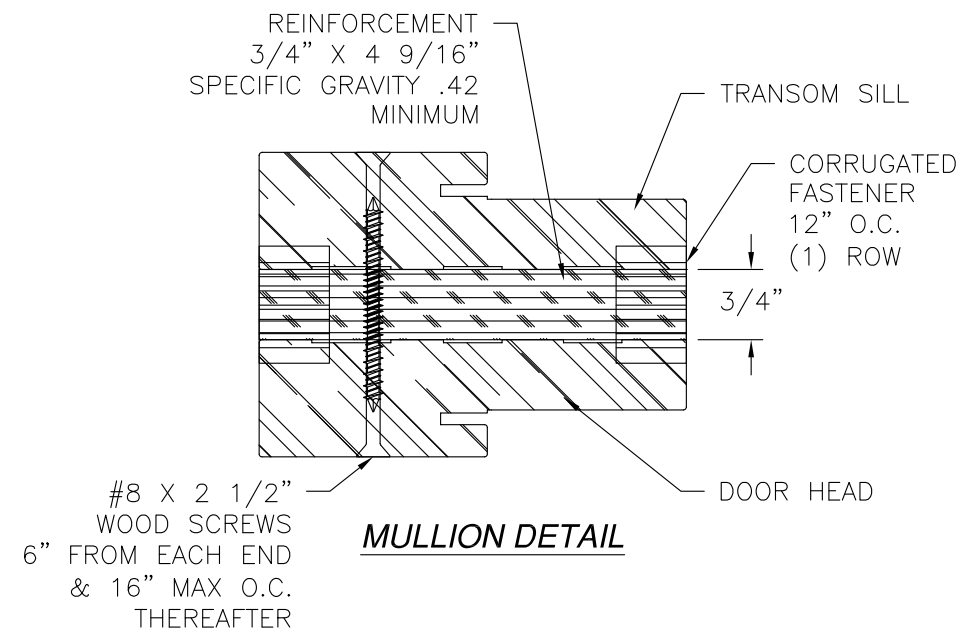
DESIGN PRESSURE RATING	IMPACT RATING
±55.0PSF	NONE



ANCHOR LAYOUT

REVISIONS			
REV	DESCRIPTION	DATE	APPROVED
A	ADDED STRIKE AND GLASS DETAILS	01/06/16	R.L.

D.L.O. NOTES:
 1. MAXIMUM DOOR D.L.O.: 20 3/8" X 78 1/2"
 2. MAXIMUM TRANSOM D.L.O.: 71 1/32" X 28 11/16"



MULLION DETAIL

HARDWARE SCHEDULE	
A.	F-SERIES LOCK ASSEMBLY DOOR KNOB BY SCHLAGE.
B.	B-SERIES DEADBOLT ASSEMBLY BY SCHLAGE.
C.	F-SERIES DEADBOLT ASSEMBLY BY SCHLAGE.
D.	RESIDENTIAL GRADE DOOR HANDLE ASSEMBLY BY EMTEK (ALTERNATE).
E.	MULTI-POINT LOCK HANDLE ASSEMBLY BY TRILENNIUM (ALTERNATE).
F.	(3) 4" x 4" BALL BEARING HINGES BY PENROD.
G.	(3) 4" x 4" SPRING BOMMER HINGES BY PENROD. (ALTERNATE)

PROVIA DOOR, INC.
 2150 STATE ROUTE 39
 SUGARCREEK, OH 44681

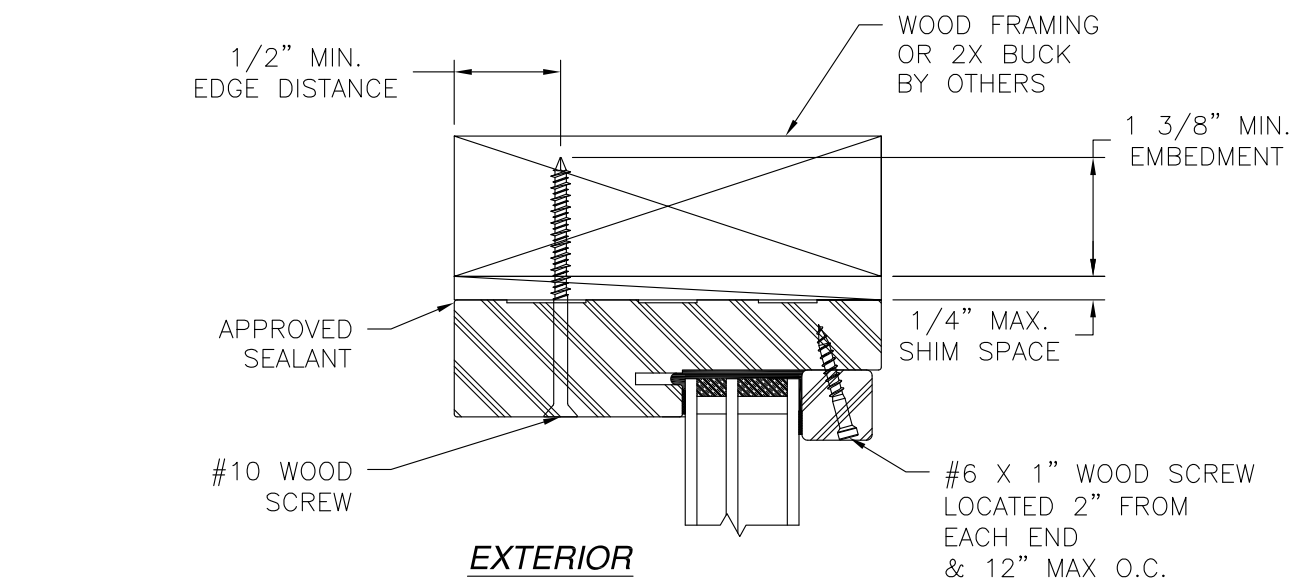
STEEL/FIBERGLASS INSWING GLAZED DOUBLE DOOR
 W/TRANSOM NON-IMPACT COMPOSITE/WOOD FRAME
 ELEVATION & ANCHORING LAYOUT

DRAWN: V.L.	DWG NO. 08-02401	REV A
SCALE NTS	DATE 07/21/14	SHEET 2 OF 8

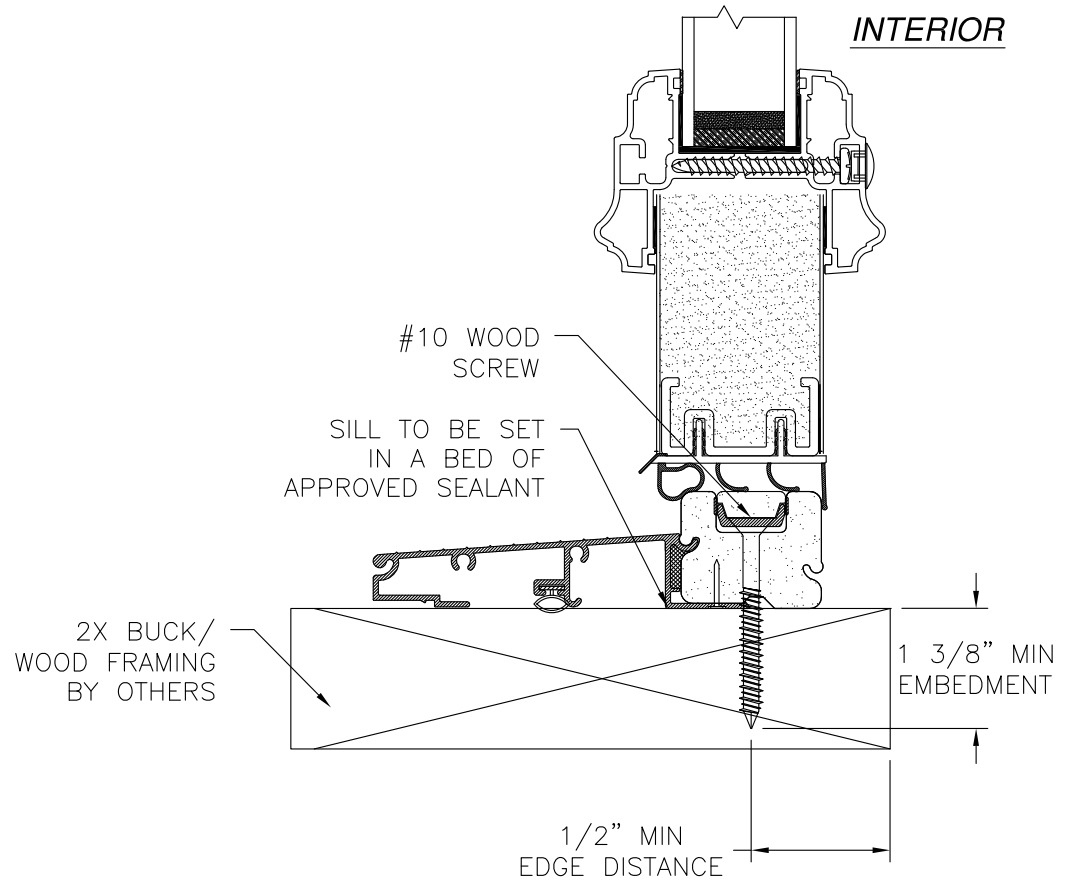
SIGNED: 01/07/2016

Luis R. Lomas P.E.
 TX No.: 101889

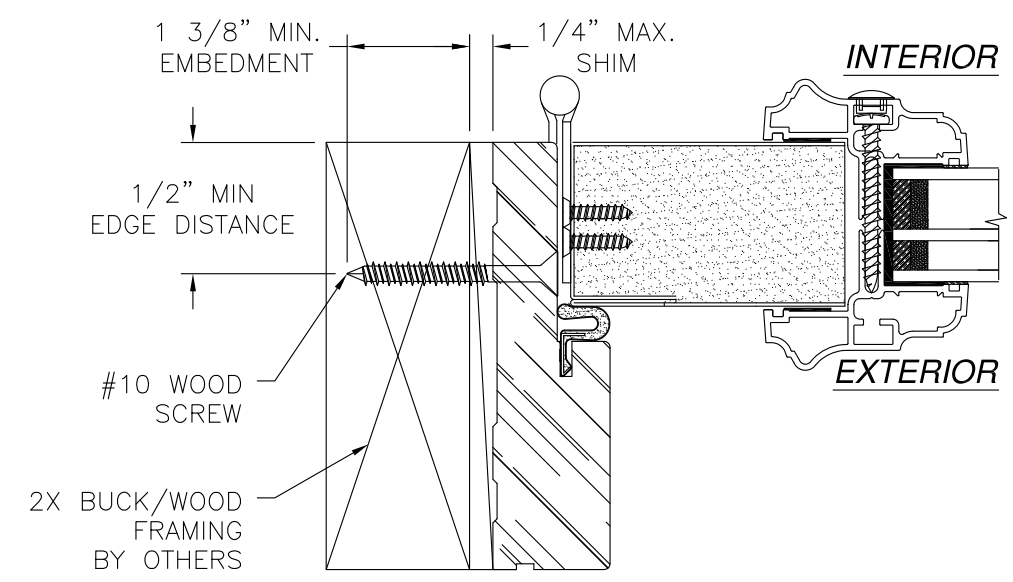
REVISIONS			
REV	DESCRIPTION	DATE	APPROVED
A	ADDED STRIKE AND GLASS DETAILS	01/06/16	R.L.



EXTERIOR
INTERIOR



VERTICAL CROSS SECTION
DOOR AND TRANSOM INSTALLATION - 2X BUCK/WOOD FRAMING
TRANSOM HEAD SHOWN
TRANSOM JAMB SIMILAR



HORIZONTAL CROSS SECTION
DOOR INSTALLATION - 2X BUCK/WOOD FRAMING

NOTES:
1. INTERIOR AND EXTERIOR FINISHES, BY OTHERS, NOT SHOWN FOR CLARITY.
2. PERIMETER AND JOINT SEALANT BY OTHERS TO BE DESIGNED IN ACCORDANCE WITH ASTM E2112

SIGNED: 01/07/2016

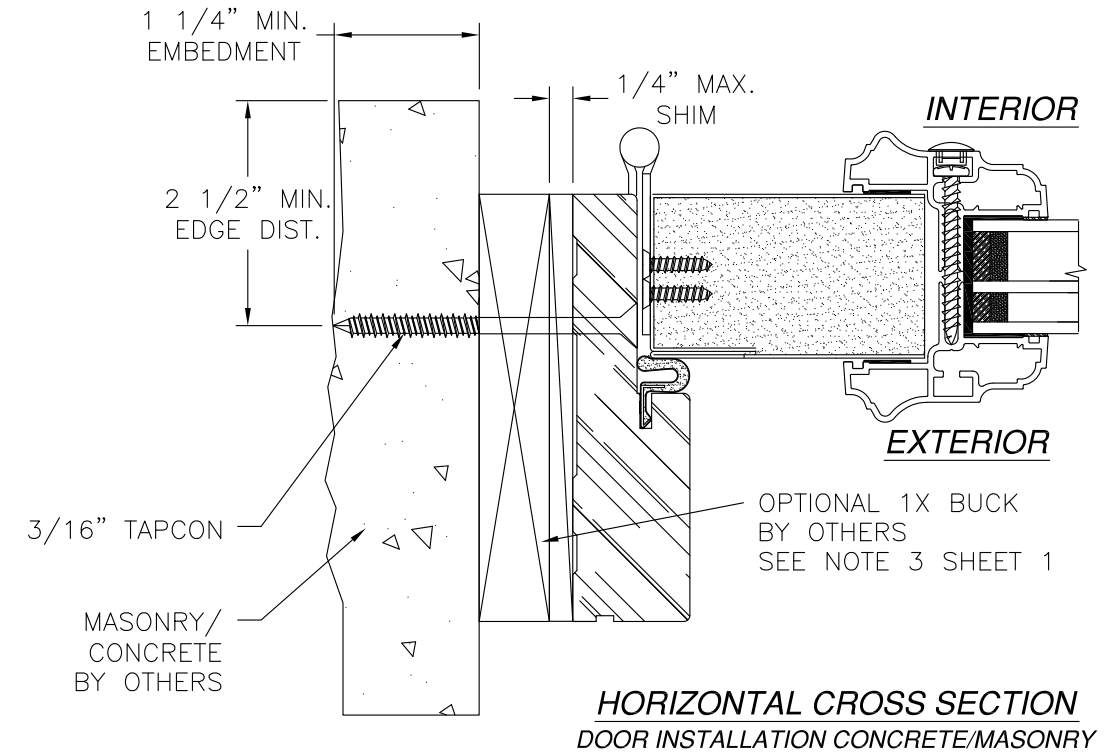
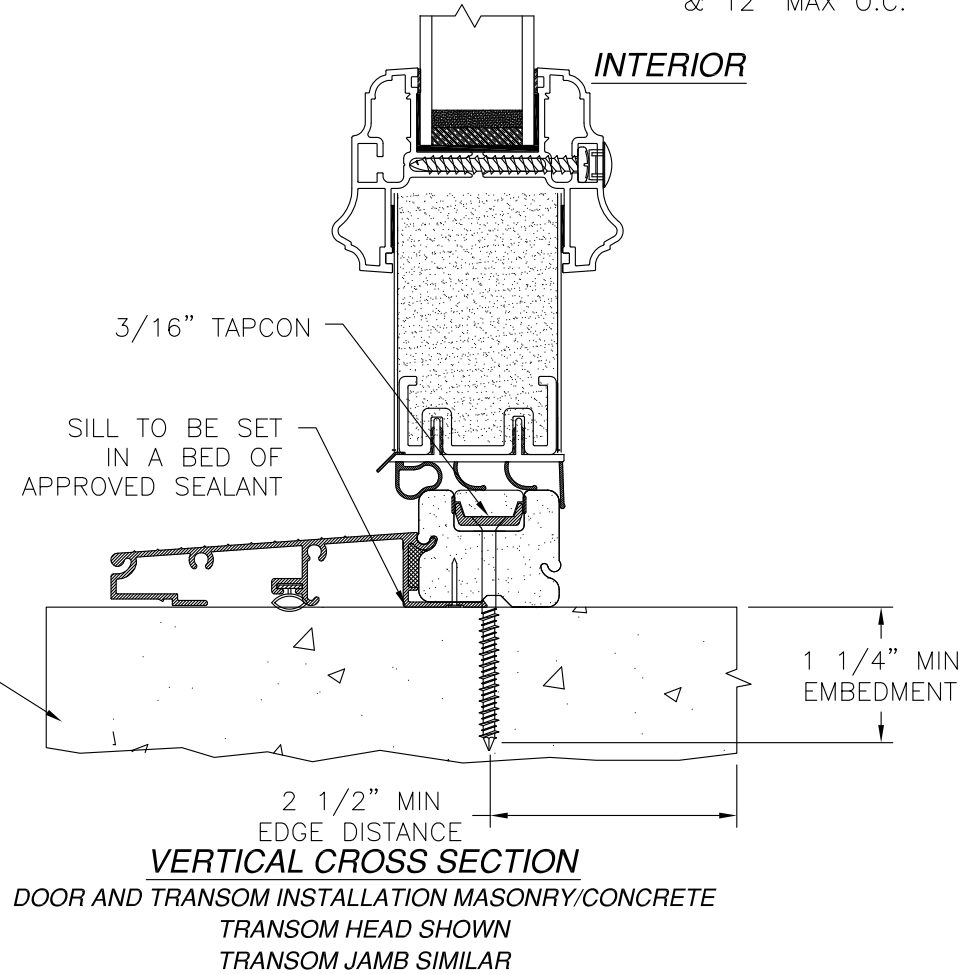
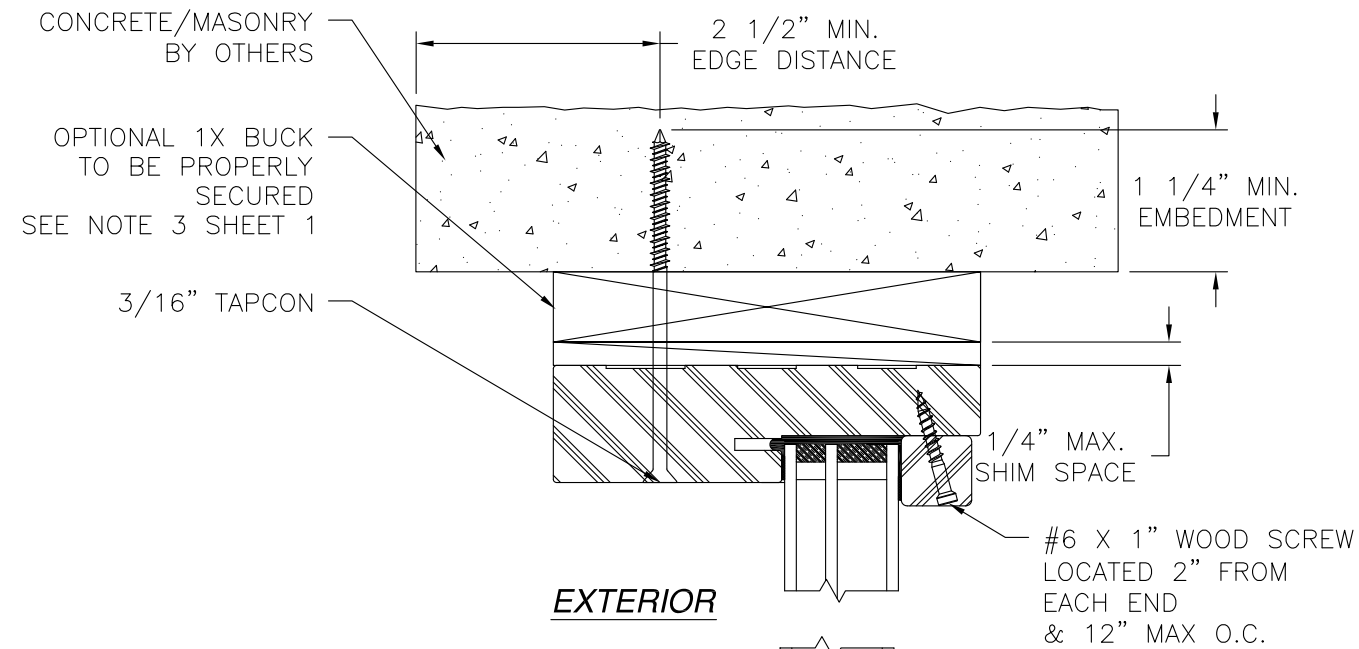
PROVIA DOOR, INC.
2150 STATE ROUTE 39
SUGARCREEK, OH 44681

STEEL/FIBERGLASS INSWING GLAZED DOUBLE DOOR
W/TRANSOM NON-IMPACT COMPOSITE/WOOD FRAME
INSTALLATION DETAILS

DRAWN: V.L.	DWG NO. 08-02401	REV A
SCALE NTS	DATE 07/21/14	SHEET 3 OF 8

Luis R. Lomas P.E.
TX No.: 101889

REVISIONS			
REV	DESCRIPTION	DATE	APPROVED
A	ADDED STRIKE AND GLASS DETAILS	01/06/16	R.L.



- NOTES:
1. INTERIOR AND EXTERIOR FINISHES, BY OTHERS, NOT SHOWN FOR CLARITY.
 2. PERIMETER AND JOINT SEALANT BY OTHERS TO BE DESIGNED IN ACCORDANCE WITH ASTM E2112

SIGNED: 01/07/2016

PROVIA DOOR, INC.
2150 STATE ROUTE 39
SUGARCREEK, OH 44681

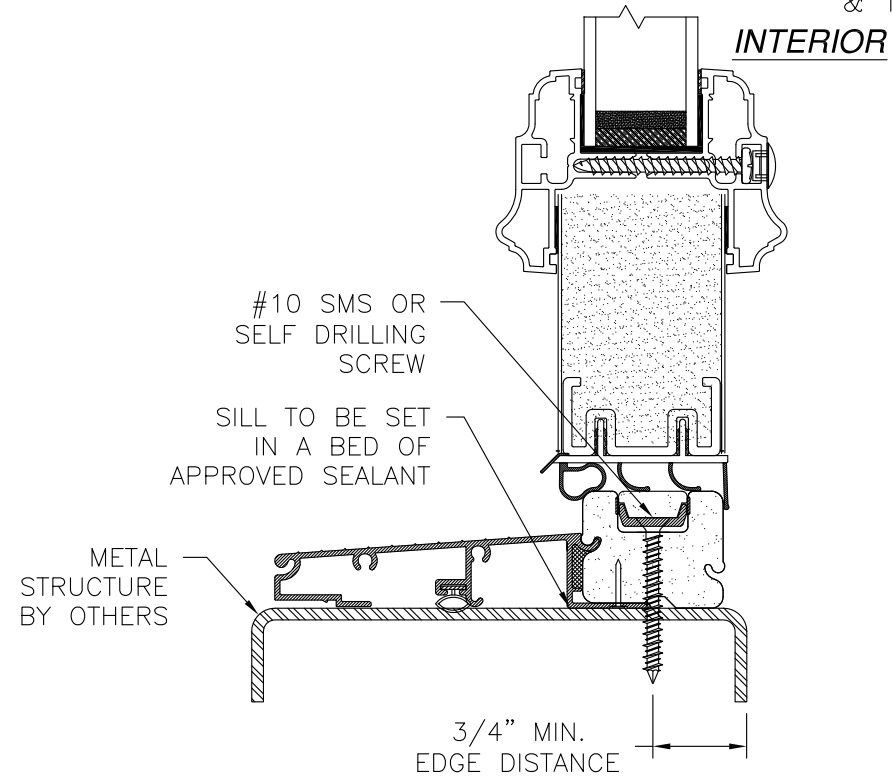
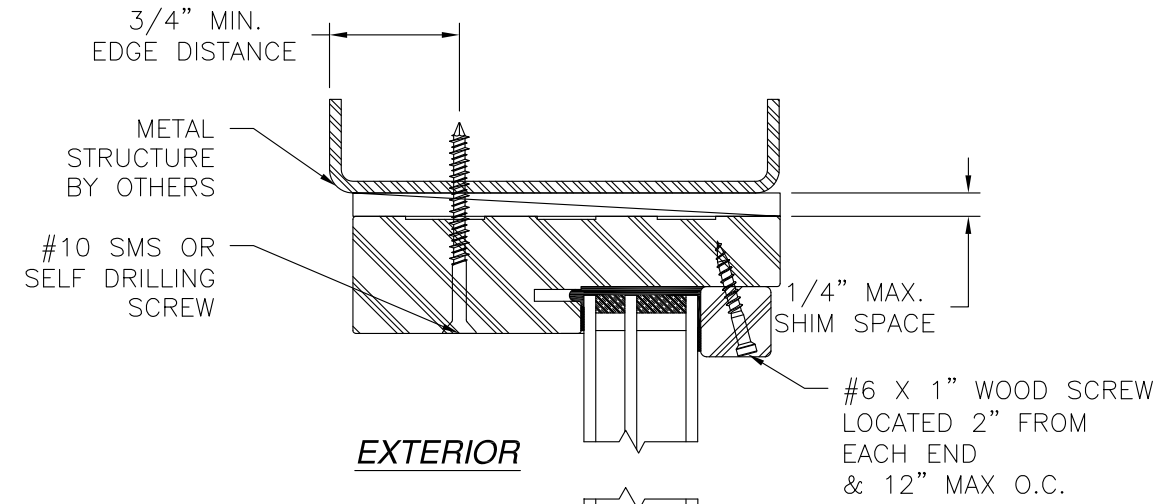
STEEL/FIBERGLASS INSWING GLAZED DOUBLE DOOR
W/TRANSOM NON-IMPACT COMPOSITE/WOOD FRAME
INSTALLATION DETAILS

DRAWN: V.L.	DWG NO. 08-02401	REV A
SCALE NTS	DATE 07/21/14	SHEET 4 OF 8

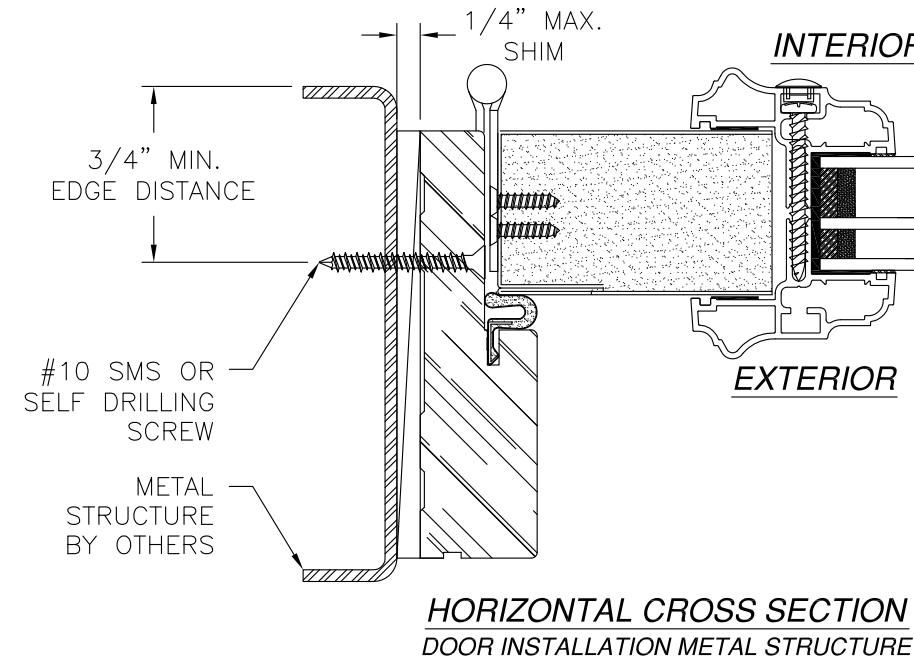


Luis R. Lomas P.E.
TX No.: 101889

REVISIONS			
REV	DESCRIPTION	DATE	APPROVED
A	ADDED STRIKE AND GLASS DETAILS	01/06/16	R.L.



VERTICAL CROSS SECTION
 DOOR AND TRANSOM INSTALLATION METAL STRUCTURE
 TRANSOM HEAD SHOWN
 TRANSOM JAMB SIMILAR



- NOTES:
1. INTERIOR AND EXTERIOR FINISHES, BY OTHERS, NOT SHOWN FOR CLARITY.
 2. PERIMETER AND JOINT SEALANT BY OTHERS TO BE DESIGNED IN ACCORDANCE WITH ASTM E2112

SIGNED: 01/07/2016

PROVIA DOOR, INC.
 2150 STATE ROUTE 39
 SUGARCREEK, OH 44681

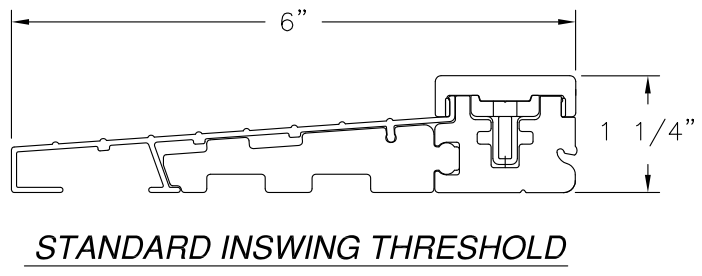
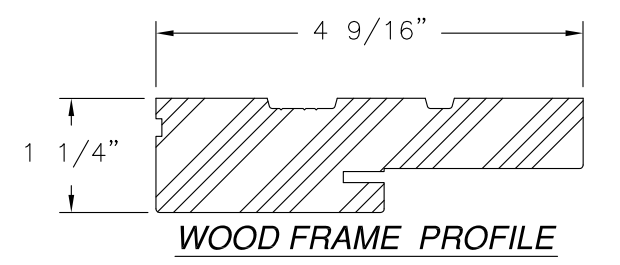
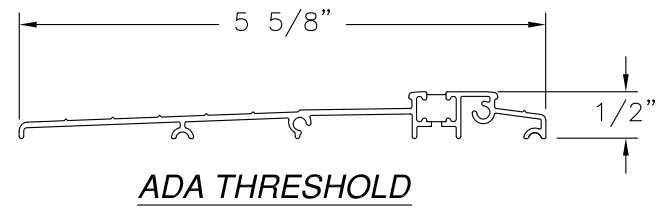
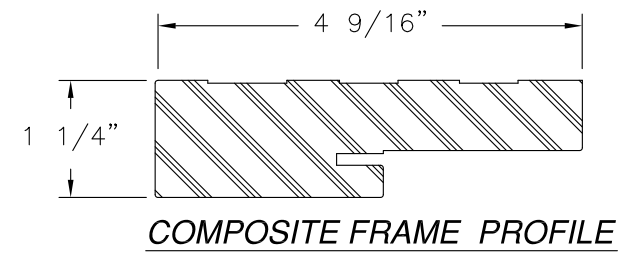
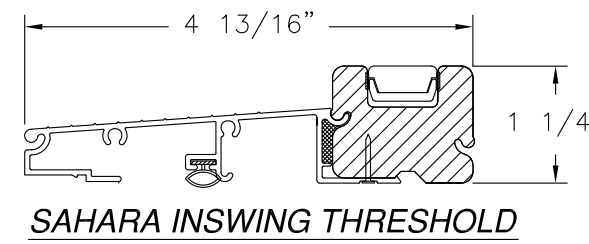
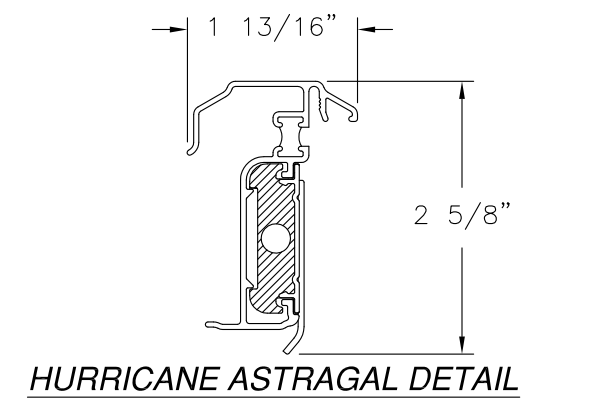
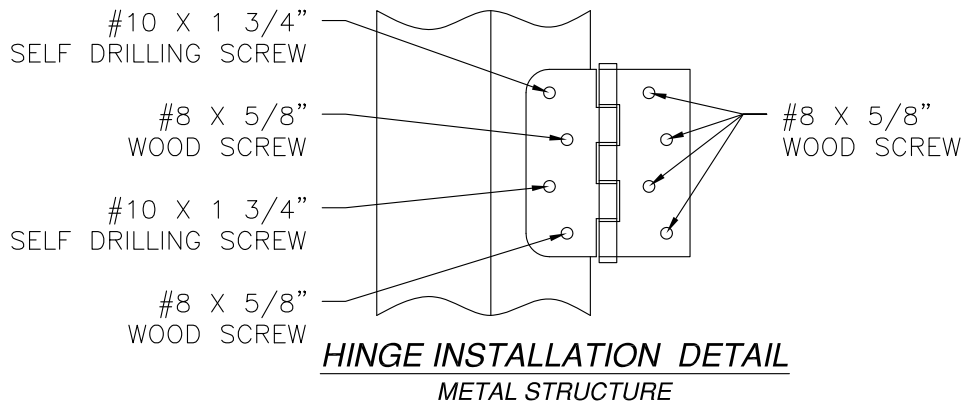
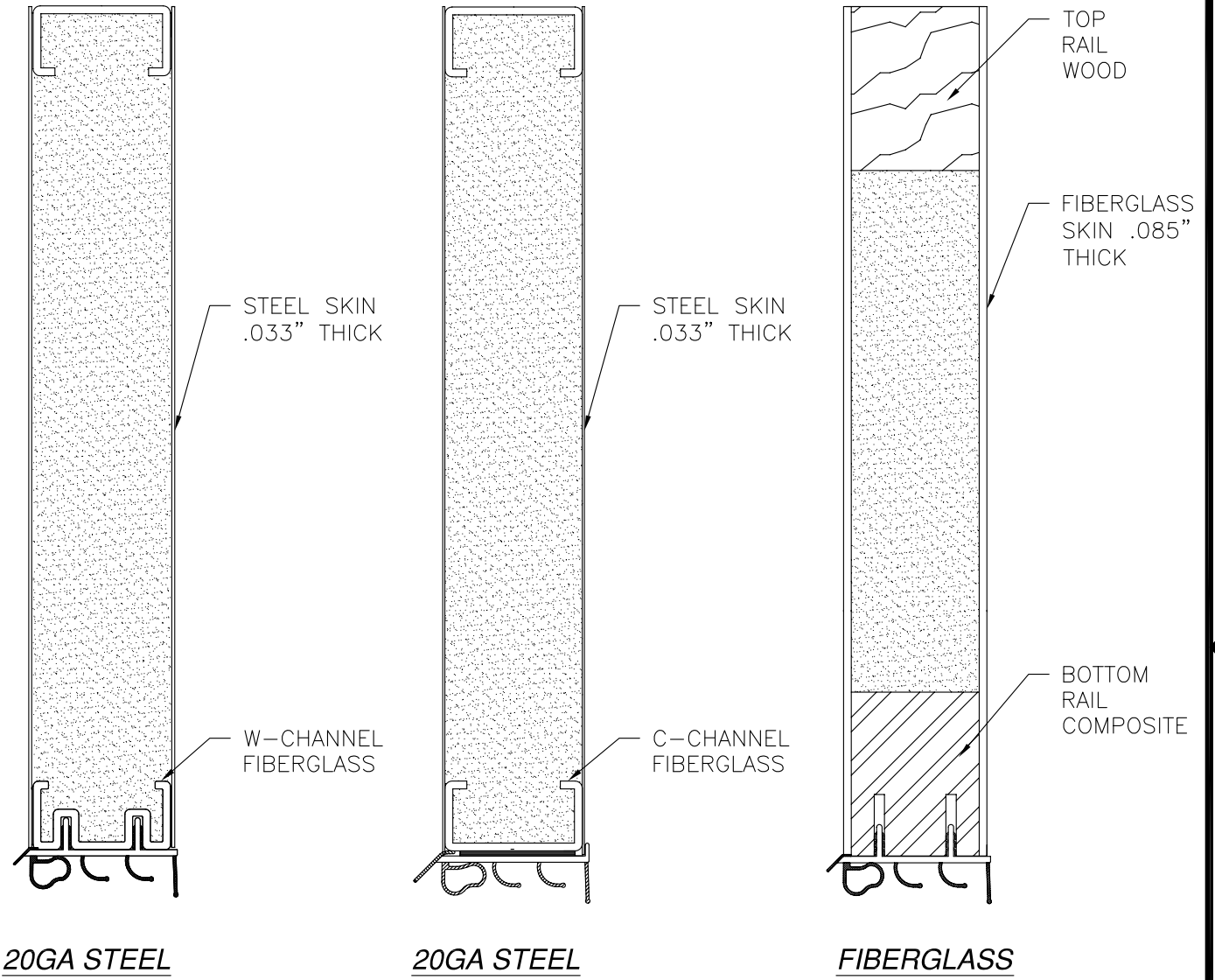
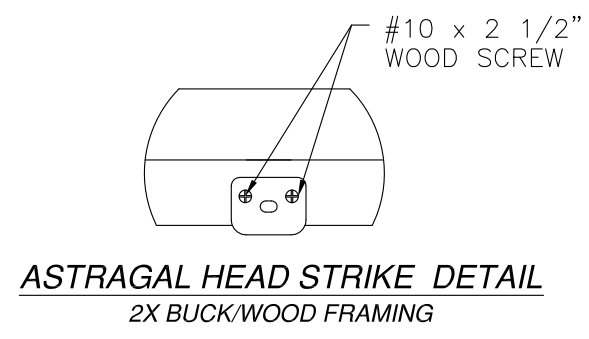
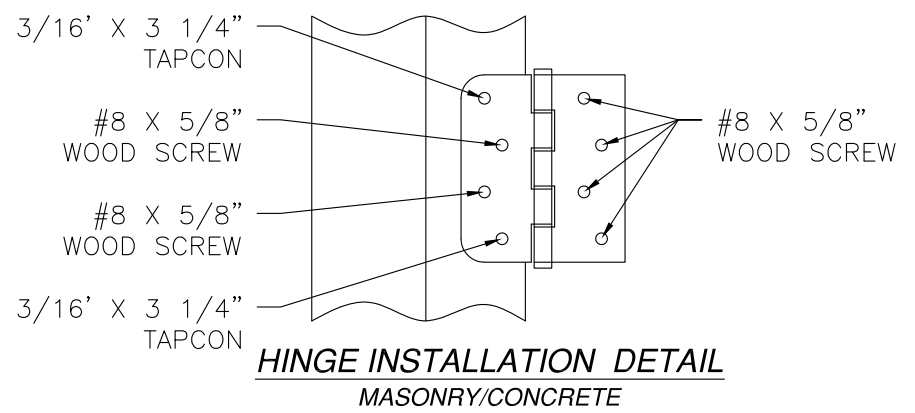
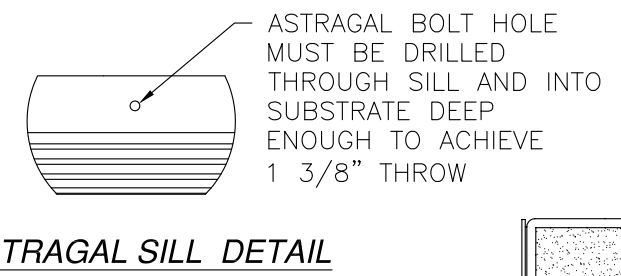
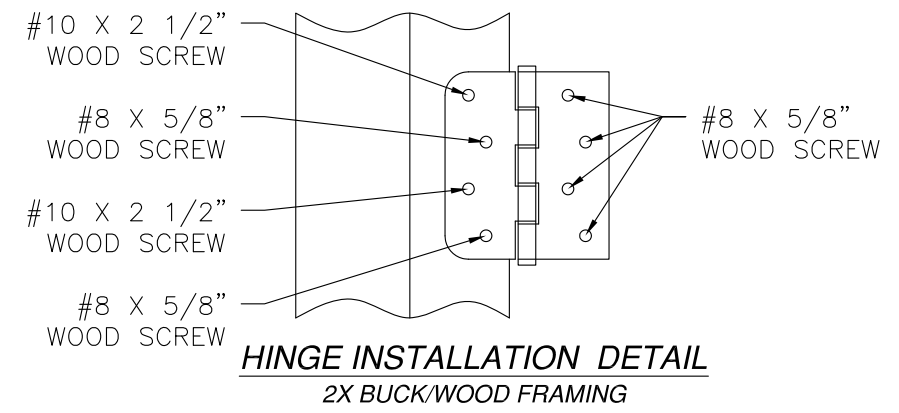
STEEL/FIBERGLASS INSWING GLAZED DOUBLE DOOR
 W/TRANSOM NON-IMPACT COMPOSITE/WOOD FRAME
 INSTALLATION DETAILS

DRAWN: V.L.	DWG NO. 08-02401	REV A
SCALE NTS	DATE 07/21/14	SHEET 5 OF 8



Luis R. Lomas P.E.
 TX No.: 101889

REVISIONS			
REV	DESCRIPTION	DATE	APPROVED
A	ADDED STRIKE AND GLASS DETAILS	01/06/16	R.L.



PROVIA DOOR, INC.
2150 STATE ROUTE 39
SUGARCREEK, OH 44681

STEEL/FIBERGLASS INSWING GLAZED DOUBLE DOOR
W/TRANSOM NON-IMPACT COMPOSITE/WOOD FRAME
INSTALLATION DETAILS

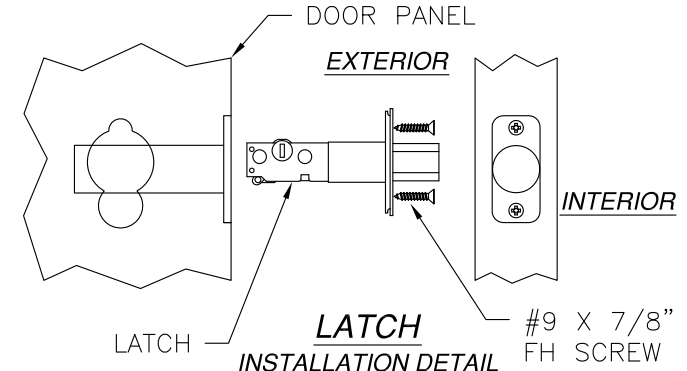
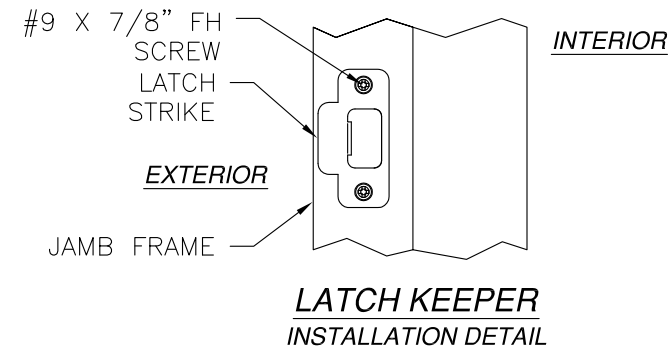
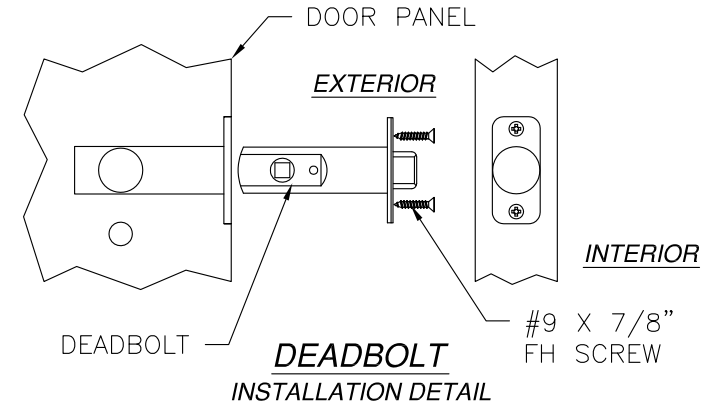
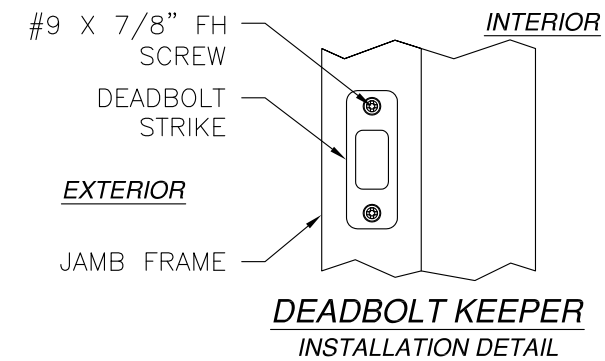
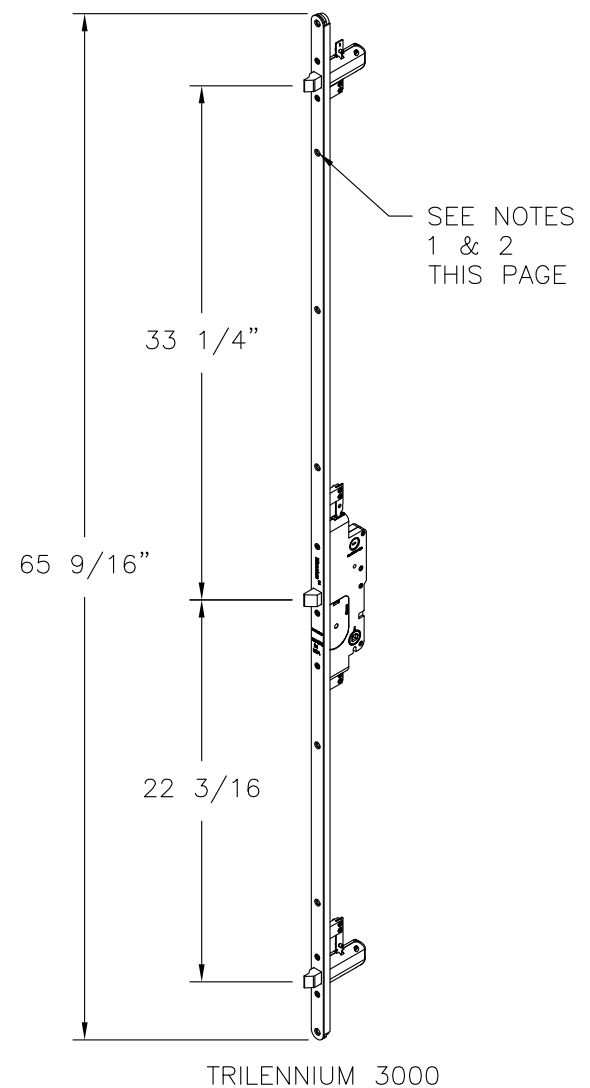
DRAWN: V.L.	DWG NO. 08-02401	REV A
SCALE NTS	DATE 07/21/14	SHEET 6 OF 8

SIGNED: 01/07/2016



Luis R. Lomas P.E.
TX No.: 101889

REVISIONS			
REV	DESCRIPTION	DATE	APPROVED
A	ADDED STRIKE AND GLASS DETAILS	01/06/16	R.L.



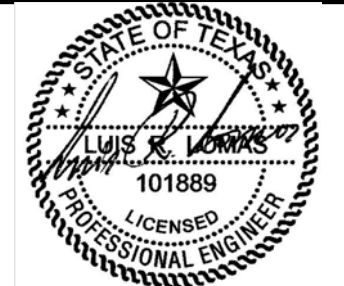
- NOTES:
- MULTIPOINT LOCK TO BE ATTACHED TO DOOR STILE USING (7) #10 X 1" FH WOOD SCREWS LOCATED IN PRE-DRILLED HOLES.
 - MULTIPOINT LOCK STRIKE PLATES TO BE ATTACHED TO JAMBS OR DOOR PANELS USING (2) #10 X 1" FH WOOD SCREWS & (1) #10 X 2 1/2" FH WOOD SCREW AT EACH LOCK LOCATION.

PROVIA DOOR, INC.
2150 STATE ROUTE 39
SUGARCREEK, OH 44681

STEEL/FIBERGLASS INSWING GLAZED DOUBLE DOOR
W/TRANSOM NON-IMPACT COMPOSITE/WOOD FRAME
INSTALLATION DETAILS

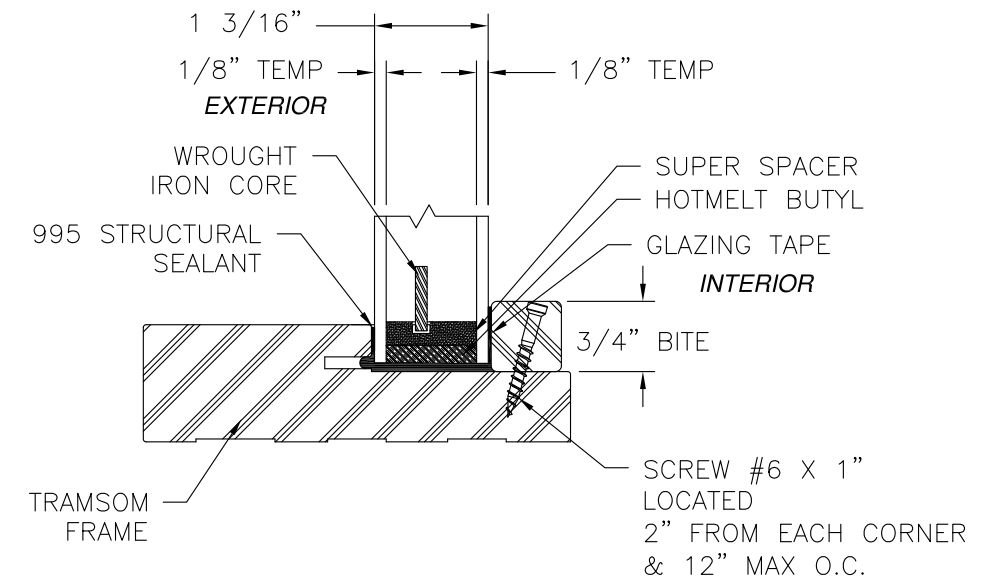
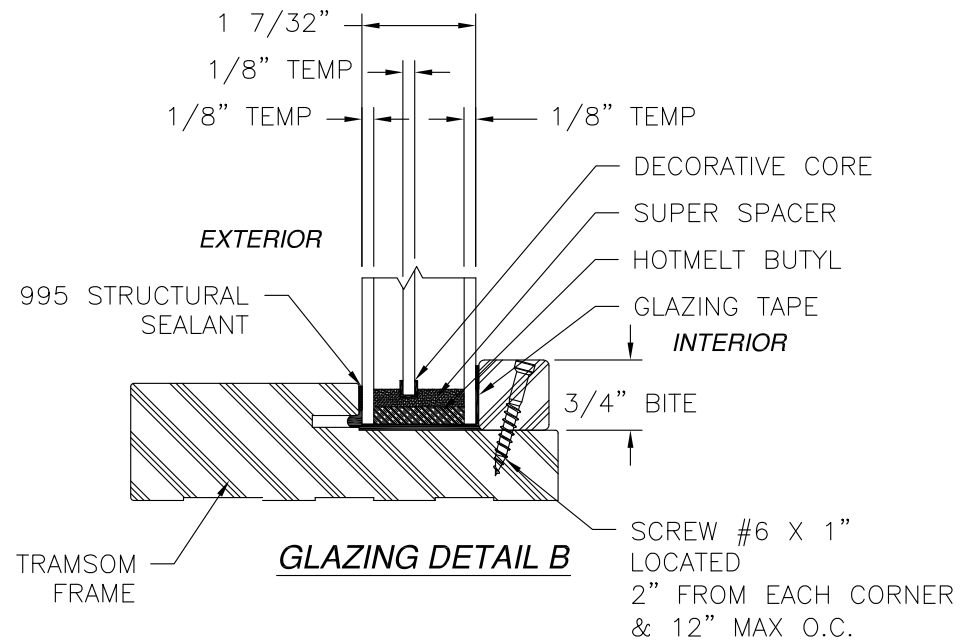
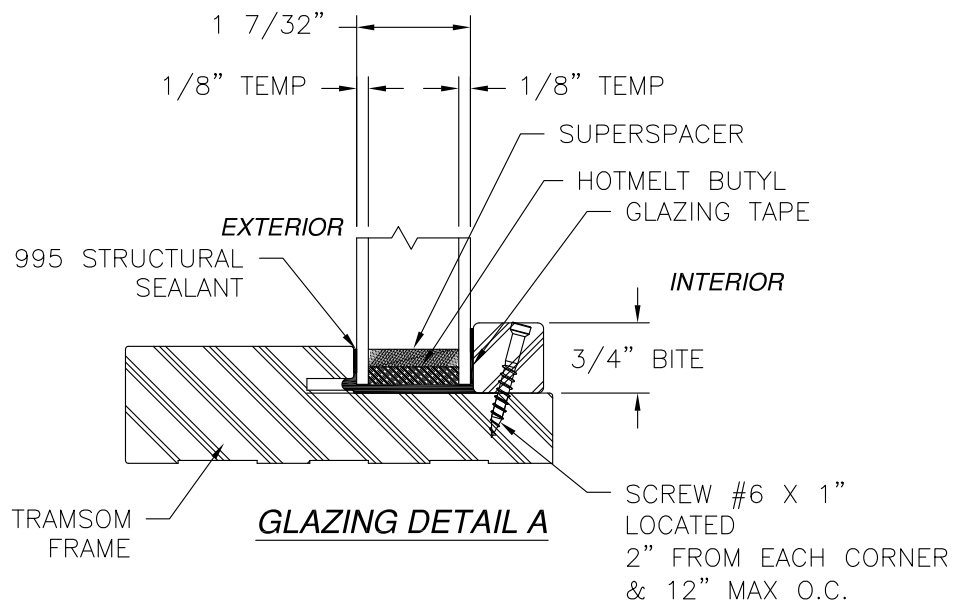
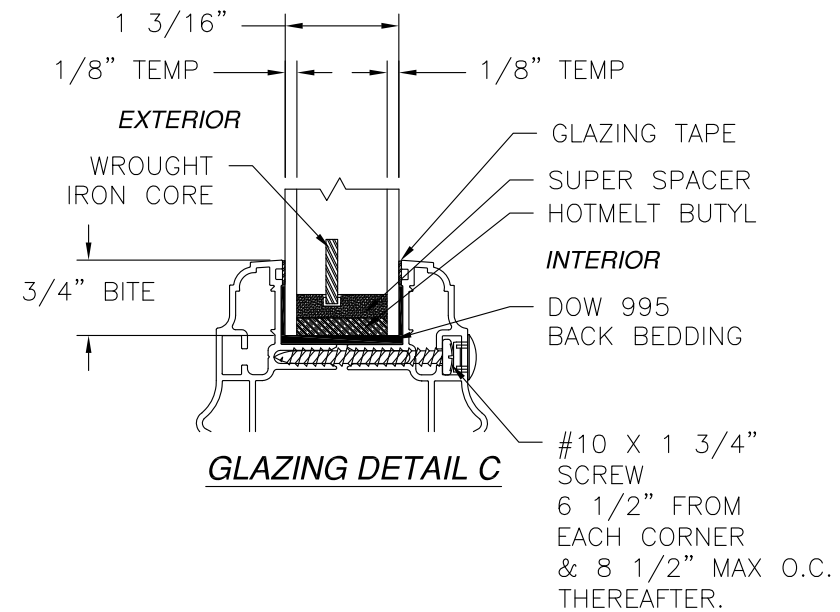
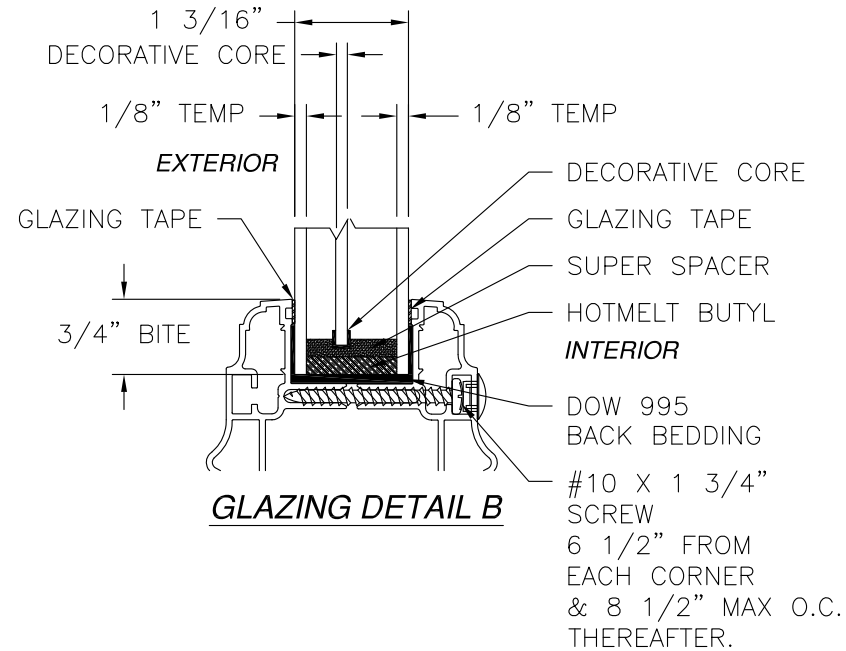
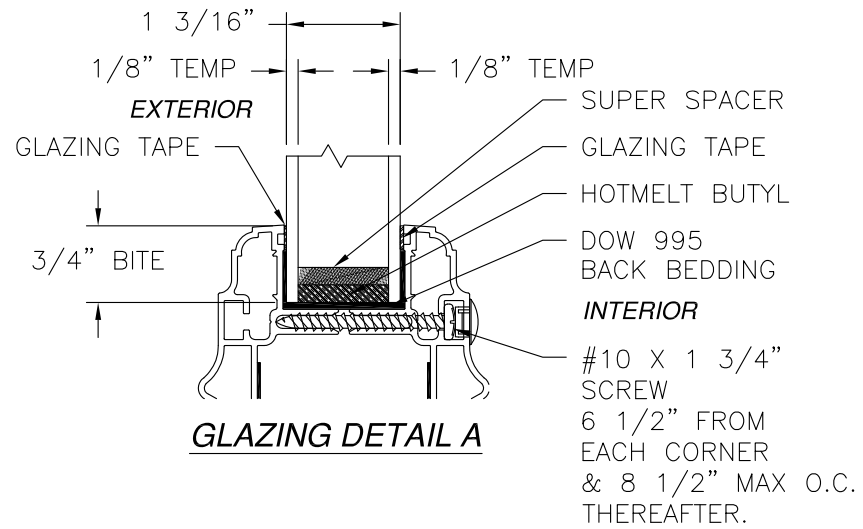
DRAWN: V.L.	DWG NO. 08-02401	REV A
SCALE NTS	DATE 07/21/14	SHEET 7 OF 8

SIGNED: 01/07/2016



Luis R. Lomas P.E.
TX No.: 101889

REVISIONS			
REV	DESCRIPTION	DATE	APPROVED
A	ADDED STRIKE AND GLASS DETAILS	01/06/16	R.L.



SIGNED: 01/07/2016

PROVIA DOOR, INC.
2150 STATE ROUTE 39
SUGARCREEK, OH 44681

STEEL/FIBERGLASS INSWING GLAZED DOUBLE DOOR
W/TRANSOM NON-IMPACT COMPOSITE/WOOD FRAME
INSTALLATION DETAILS

DRAWN: V.L.	DWG NO. 08-02401	REV A
SCALE NTS	DATE 07/21/14	SHEET 8 OF 8



Luis R. Lomas P.E.
TX No.: 101889