

GENERAL NOTES:

- ALL FASTENERS SHALL BE IN ACCORDANCE WITH THESE DRAWINGS. SPECIFIED ANCHOR EMBED TO BASE MATERIAL SHALL BE BEYOND WALL FINISH OR STUCCO.
- OPENINGS, BUCKING & BUCKING FASTENERS MUST BE PROPERLY DESIGNED & INSTALLED TO TRANSFER WIND LOADS TO THE STRUCTURE.
- THESE NON-IMPACT RATED PRODUCT INSTALLATIONS ARE IN ACCORDANCE WITH AND MEET THE REQUIREMENTS OF THE 2018 INTERNATIONAL BUILDING CODE (IBC).
- ALL ANCHORS SECURING PRODUCT FRAME TO PRESSURE TREATED BUCKS OR WOOD FRAMING SHALL BE CAPABLE OF RESISTING CORROSION CAUSED BY THE PRESSURE TREATING CHEMICALS IN THE WOOD.
- TO THE BEST OF OUR KNOWLEDGE, THE PRODUCT SHOWN HEREIN IS CERTIFIED & QUALITY ASSURED BY A NATIONALLY ACCREDITED CERTIFICATION/QA ENTITY & SHALL BE LABELED IN ACCORDANCE WITH CERTIFICATION/QA ENTITIES SPECIFICATIONS. PRODUCT ASSEMBLY IS NOT PART OF THIS DRAWING AND SHALL BE IN ACCORDANCE WITH THE MANUFACTURER'S QUALITY ASSURANCE SPECIFICATIONS & TESTING REPORTS.
- CERTIFICATION OF THESE PRODUCT INSTALLATIONS SHALL BE CONSIDERED VOID IF ANY OF THE FOLLOWING APPLY: 1) THEY ARE INSTALLED WITHOUT A BUILDING PERMIT FROM THE APPLICABLE LOCAL BUILDING DEPARTMENT. 2) IF THEY ARE INSTALLED BY ANYONE OTHER THAN A LICENSED CONTRACTOR EXPERIENCED WITH WINDOW/DOOR INSTALLATIONS. 3) IF CHANGES HAVE OCCURRED TO THE PRODUCT'S CERTIFICATION ENTITY'S CERTIFICATE THAT CAUSE THESE INSTALLATIONS TO BE INCORRECT OR INCONSISTENT WITH WHAT HAS BEEN TESTED.
- THE LEAST DESIGN PRESSURE SPECIFIED EITHER IN THIS DRAWING OR IN THE PRODUCTS CERTIFICATION SHALL CONTROL FOR THE INSTALLED PRODUCT.
- THESE DRAWINGS CERTIFY THE PRODUCT INSTALLATION ONLY. WATER PROOFING OF THE INSTALLED PRODUCT IS NOT PART OF THIS INSTALLATION CERTIFICATION. THAT RESPONSIBILITY SHALL BE THAT OF THE MANUFACTURER &/OR INSTALLER.

FRAME ANCHOR REQUIREMENTS TABLE

OPENING TYPE (SUBSTRATE)	FRAME/CLIP/NAIL FIN/HINGE/STRIKE TO OPENING FASTENER TYPE	MINIMUM EMBED	MINIMUM EDGE DIST.
FRAME/SILL SCREWS			
(4) MIN. 2X6 WOOD FRAME OR BUCK (MIN. GR. 3 & G=0.55)	NO. 10 SMS OR WOOD SCREW	1 1/4"	3/4"
MIN. 18 GA. 33 KSI METAL STUD	NO. 10 GR. 5 SELF TAP/DRILL SCREW	FULL	1/2"
MIN. 1/8" THK A36 STEEL	NO. 10 GR. 5 SELF TAP/DRILL SCREW	FULL	1/2"
MIN. 1/8" THK 6063-T5 ALUM.	NO. 10 GR. 5 SELF TAP/DRILL SCREW	FULL	1/2"
C-90 CMU/2500 PSI CONCRETE	(1) 1/4" CONCRETE SCREW	1 1/4"	2"

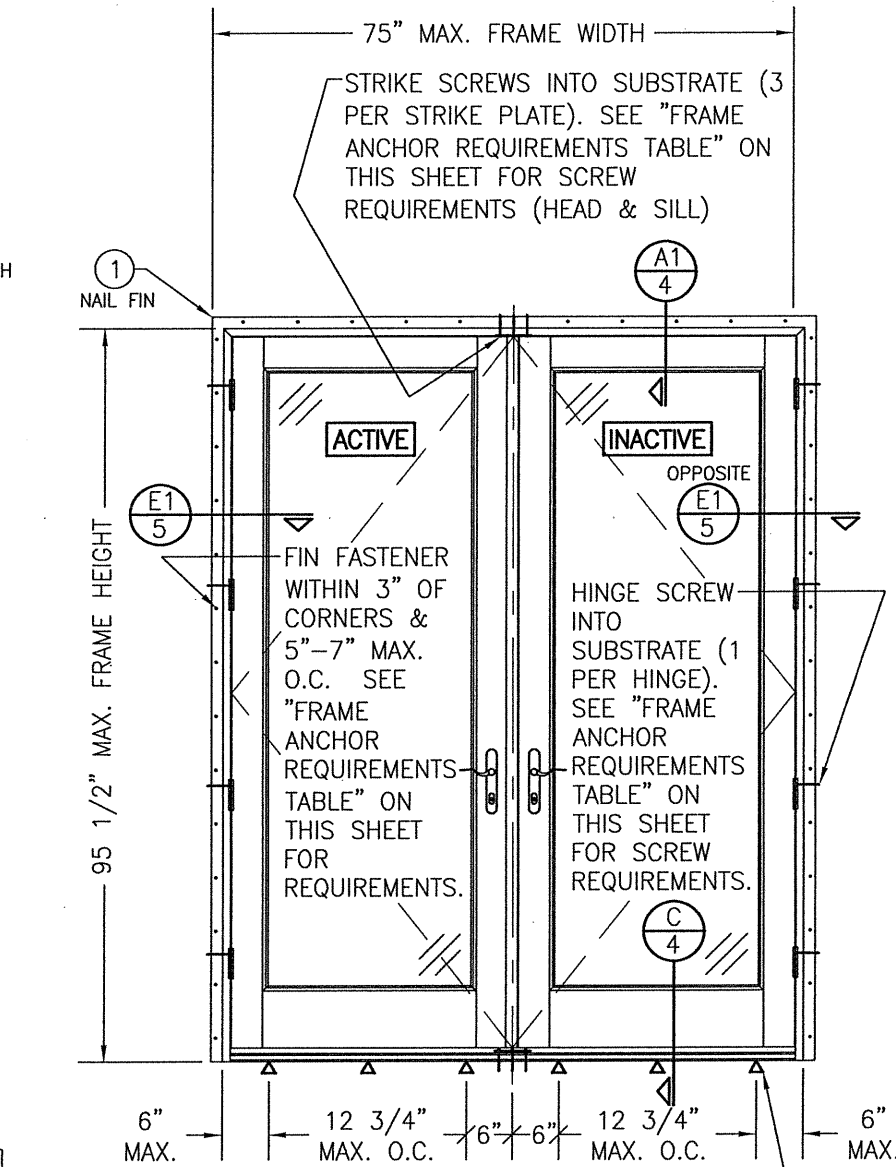
INSTALLATION CLIP SCREWS (STANDARD BENT CONDITION)			
(4) MIN. 2X6 WOOD FRAME OR BUCK (MIN. GR. 3 & G=0.55)	NO. 8 X 1 1/2" SMS	1 3/8"	(3) N/A
MIN. 1/8" THK A36 STEEL	NO. 8 GR. 5 SELF TAP/DRILL SCREW	FULL	(3) N/A
MIN. 1/8" THK 6063-T5 ALUM.	NO. 8 GR. 5 SELF TAP/DRILL SCREW	FULL	(3) N/A

(3) INSTALLATION CLIP SCREWS (ALTERNATE STRAIGHT CONDITION)			
MIN. 2X6 WOOD FRAME OR BUCK (MIN. GR. 3 & G=0.55)	NO. 8 X 1 1/2" SMS	1 3/8"	3/4"
MIN. 18 GA. 33 KSI METAL STUD	NO. 8 GR. 5 SELF TAP/DRILL SCREW	FULL	1/2"
MIN. 1/8" THK A36 STEEL	NO. 8 GR. 5 SELF TAP/DRILL SCREW	FULL	1/2"
MIN. 1/8" THK 6063-T5 ALUM.	NO. 8 GR. 5 SELF TAP/DRILL SCREW	FULL	1/2"

(2) NAILING FIN FASTENERS			
(4) MIN. 2X6 WOOD FRAME OR BUCK (MIN. GR. 3 & G=0.55)	NO. 8 SMS SCREW	1 3/8"	1/2"
(4) MIN. 2X6 WOOD FRAME OR BUCK (MIN. GR. 3 & G=0.55)	11 GA. ROOFING NAIL	1 3/8"	1/2"
MIN. 1/8" THK A36 STEEL	NO. 8 GR. 5 SELF TAP/DRILL SCREW	FULL	1/2"
MIN. 1/8" THK 6063-T5 ALUM.	NO. 8 GR. 5 SELF TAP/DRILL SCREW	FULL	1/2"

HINGE & STRIKE SCREWS			
(4) MIN. 2X6 WOOD FRAME OR BUCK (MIN. GR. 3 & G=0.55)	NO. 8 SMS OR WOOD SCREW	1 1/4"	3/4"
MIN. 18 GA. 33 KSI METAL STUD	NO. 8 GR. 5 SELF TAP/DRILL SCREW	FULL	1/2"
MIN. 1/8" THK A36 STEEL	NO. 8 GR. 5 SELF TAP/DRILL SCREW	FULL	1/2"
MIN. 1/8" THK 6063-T5 ALUM.	NO. 8 GR. 5 SELF TAP/DRILL SCREW	FULL	1/2"
C-90 CMU/2500 PSI CONCRETE	(1) 3/16" CONCRETE SCREW	1 1/4"	2"

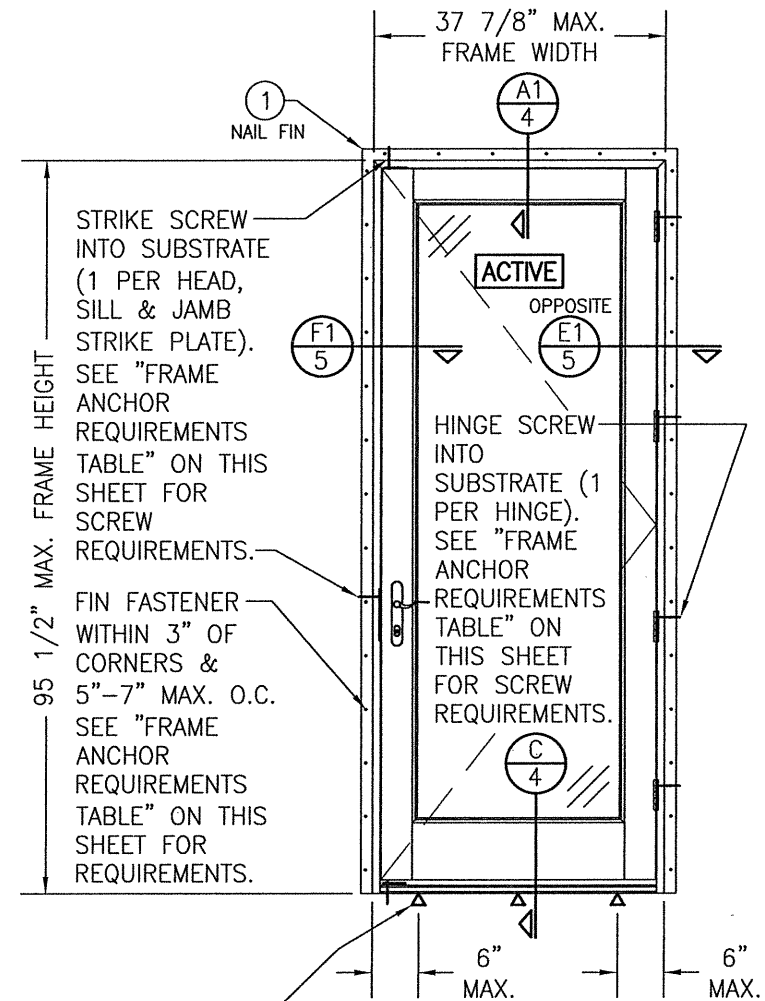
- CONCRETE SCREWS SHALL BE ELCO ULTRACONS (C.S.), ELCO CRETE-FLEX (S.S.), ITW RAMSET/RED HEAD TAPCONS (C.S. OR S.S.) OR HILTI KWIK-CON II (C.S. OR S.S.).
- WHEN SCREWS ARE USED WITH THE NAIL FIN, THEY MUST BE A WAFFLE HEAD SCREW OR HAVE A FLAT WASHER AT THE SCREW HEAD.
- ALTERNATE BENT CLIP INSTALLATION SCREWS SHALL BE POSITIONED WITHIN 1/4" OF THE BUCK/SUBSTRATE EDGE AND, IF INTO WOOD, ANGLED 15 TO 20 DEGREES INTO THE BUCK.
- 2X6 BUCKS MAY BE RIPPED DOWN TO MIN 4 3/4" DEPTH EXCEPT WHEN THE ALTERNATE INSTALLATION CLIP CONDITION APPLIES.



**INTERIOR ELEVATION:
DOUBLE XX DOOR**

SCALE: 1/2" = 1'-0"
(NAIL FIN MOUNT CONDITION)

EDGE DISTANCE MAY BE DECREASED TO 1/2" IF SCREWS ARE ANGLED 15 TO 20 DEGREES AWAY FROM THE EDGE.



**INTERIOR ELEVATION:
SINGLE X DOOR**

SCALE: 1/2" = 1'-0"
(NAIL FIN MOUNT CONDITION)

SILL SCREWS WHERE SHOWN. SEE "FRAME ANCHOR REQUIREMENTS TABLE" ON THIS SHEET FOR REQUIREMENTS.

ALLOWABLE DESIGN PRESSURE
+/-50 PSF

ALTERNATE ANCHOR/SUBSTRATE EVALUATION NOTE:
ALL ALTERNATE ANCHORS IN THEIR SPECIFIED SUBSTRATES HAVE BEEN ANALYZED IN ACCORDANCE WITH THEIR APPLICABLE STANDARD(S) AND ARE FOUND TO BE EQUIVALENT TO OR STRONGER THAN THE ANCHOR(S) USED IN TESTING WITH THIS PRODUCT.

INSTALLATION EVALUATION IS BASED ON APPLICABLE ANCHOR STANDARDS AND/OR INFORMATION & RESULTS FROM APPLICABLE TEST REPORTS. THE BUILDING CODE VERSION CONSIDERED WITH THE EVALUATION WAS THAT IN FORCE AT THE TIME OF THE EVALUATION. IN THE EVENT OF CODE VERSION CHANGES/UPDATES OR IN THE EVENT THAT NEW OR ADDITIONAL TESTING IS COMPLETED ON THE REFERENCED PRODUCT, PRIOR TO STATING CODE COMPLIANCE, THE MANUFACTURER SHALL CONFIRM WITH THE INSTALLATION EVALUATION ENGINEER OF RECORD THAT THE INSTALLATIONS SPECIFIED HERE-IN ARE CURRENT WITH THE THEN CURRENT TESTING, CODE AND APPLICABLE STANDARDS.

HINGE REQUIREMENTS	
FRAME HEIGHT	QUANTITY PER PANEL
OVER 83 1/2"	4
83 1/2" AND LESS	3

THESE DRAWINGS ARE APPLICABLE ONLY TO THE PRODUCT SPECIFIED. THEY MAY NOT BE USED FOR THE ASSEMBLY AND/OR INSTALLATION OF ANY OTHER PRODUCT NOR MAY THEY BE USED FOR RATIONAL AND/OR LOCAL APPROVAL OF ANY PRODUCT NOT PRODUCED BY THE MANUFACTURER STATED ON THESE DRAWINGS.

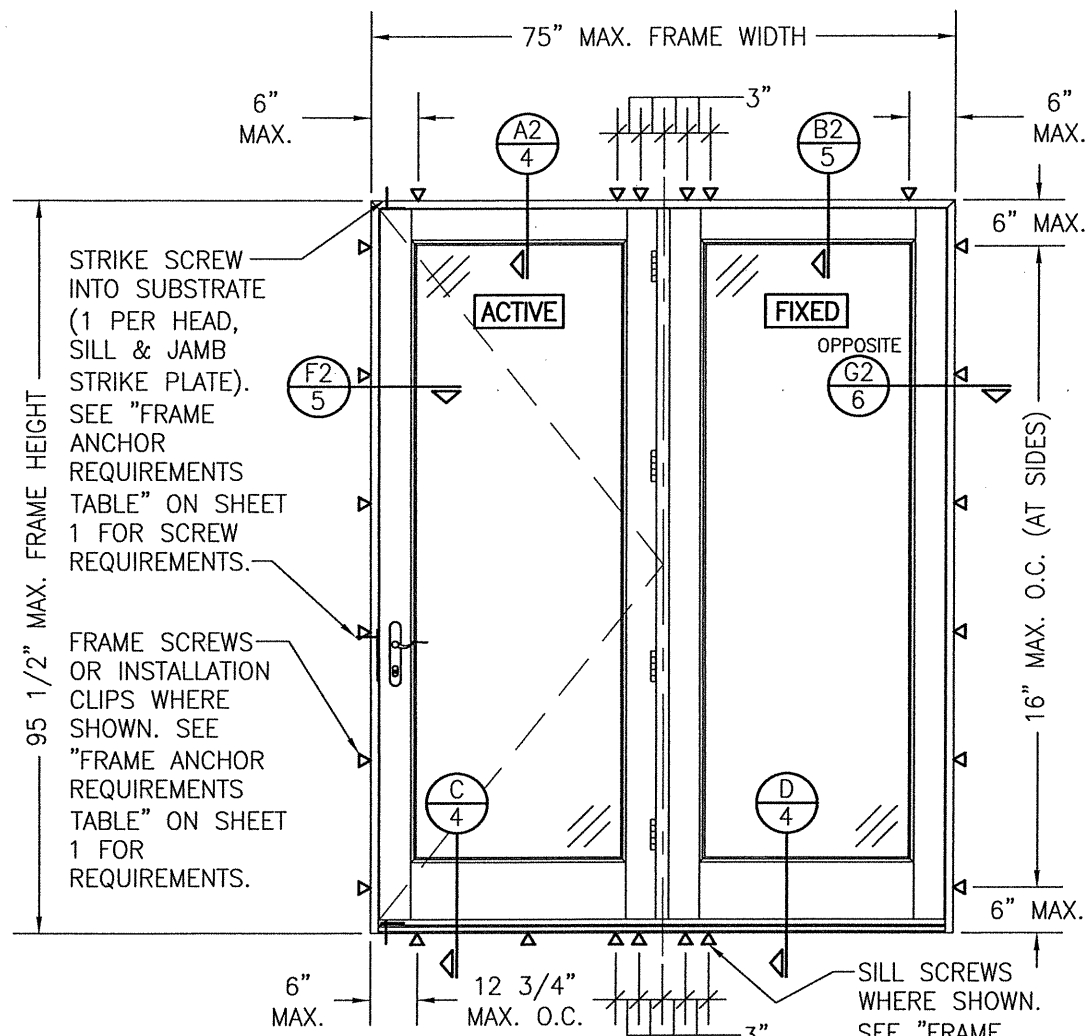
DRAWN BY: W.W.S.	CHECKED BY: W.W.S.
PLOT: 1=24	DATE: 03/12/15
DATE	BY
REVISION DESCRIPTION	NO.

JOB INFORMATION:
PELLA CORPORATION
102 MAIN STREET
PELLA, IA 50219
641-621-1000

CONSULTANTS:
W. W. SCHAEFER ENGINEERING & CONSULTING, P.A. (REG. NO. F-14980)
7480 150TH COURT NORTH
PALM BEACH GARDENS, FL 33418
PHONE: 561-744-3424

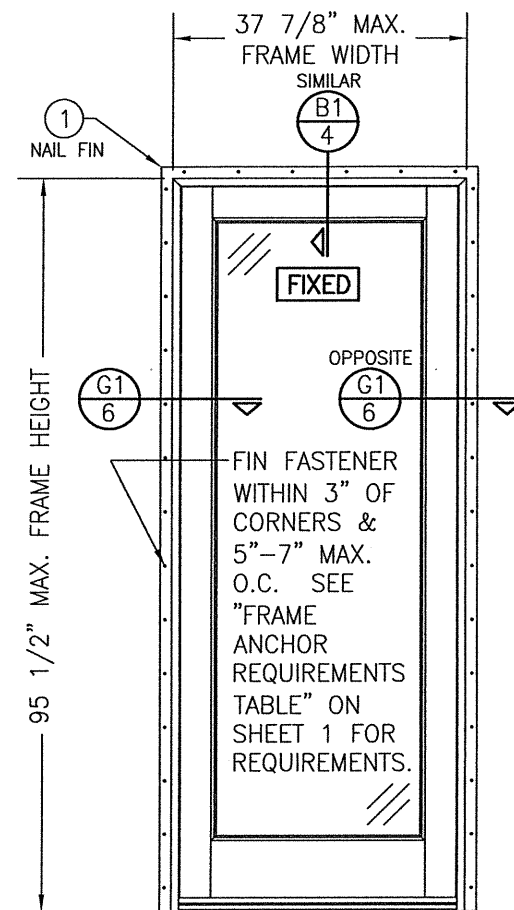
CERTIFICATION
JUL 17 2020
WARREN W. SCHAEFER, P.E.
P.E. NO. 113487

DRAWING NO. 1239T	REV.
SHEET NO. 1	OF 7

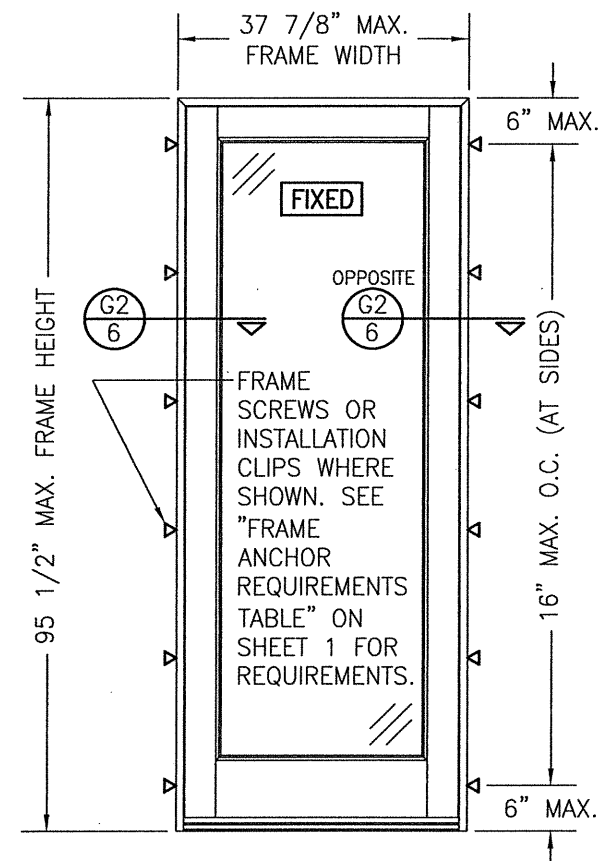


**INTERIOR ELEVATION:
DOUBLE XO DOOR**
SCALE: 1/2" = 1'-0"
(FRAME SCREW & CLIP
MOUNT CONDITION)

SILL SCREWS
WHERE SHOWN.
SEE "FRAME
ANCHOR
REQUIREMENTS
TABLE" ON SHEET
1 FOR
REQUIREMENTS.



**INTERIOR ELEVATION:
SINGLE FIXED PANEL DOOR**
SCALE: 1/2" = 1'-0"
(NAIL FIN MOUNT CONDITION)



**INTERIOR ELEVATION:
SINGLE FIXED PANEL DOOR**
SCALE: 1/2" = 1'-0"
(FRAME SCREW & CLIP MOUNT CONDITION)

DRAWN BY: W.W.S.	CHECKED BY: W.W.S.
PLOT: 1-24	DATE: 03/12/15
DATE	
BY	
REVISION DESCRIPTION	
NO.	

LIFESTYLE SERIES NON-IMPACT CLAD IN-SWING DOOR

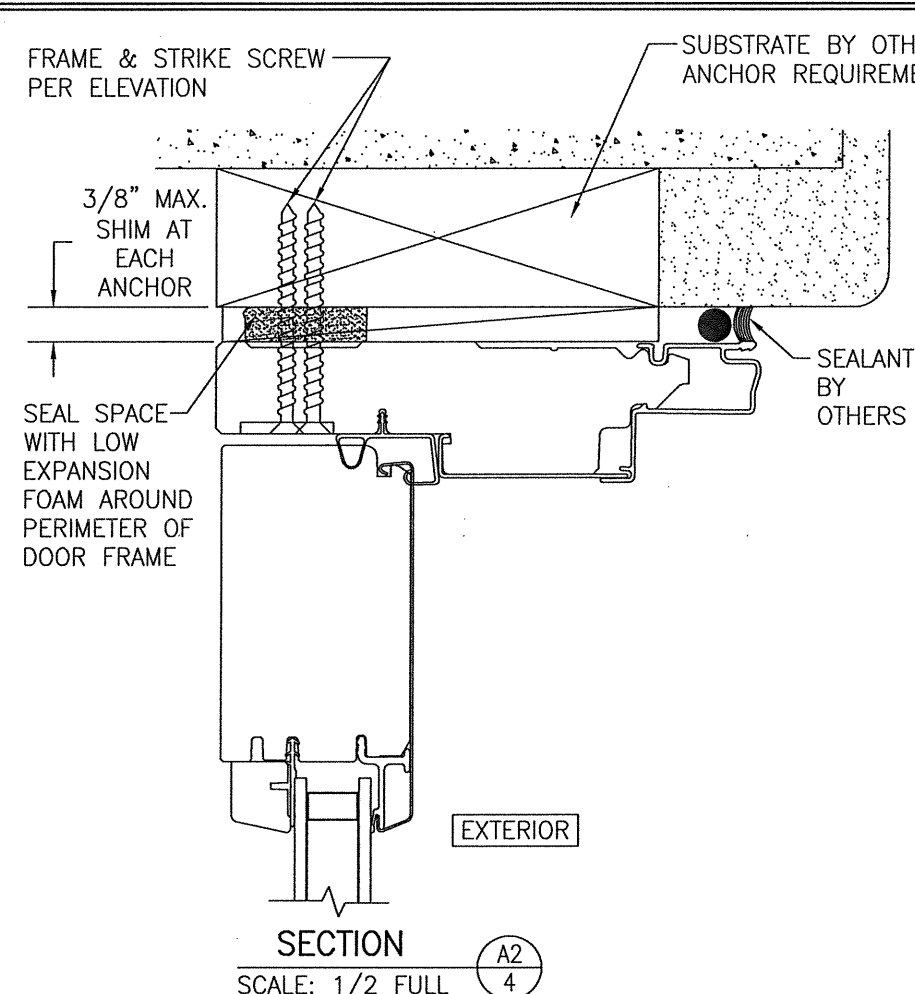
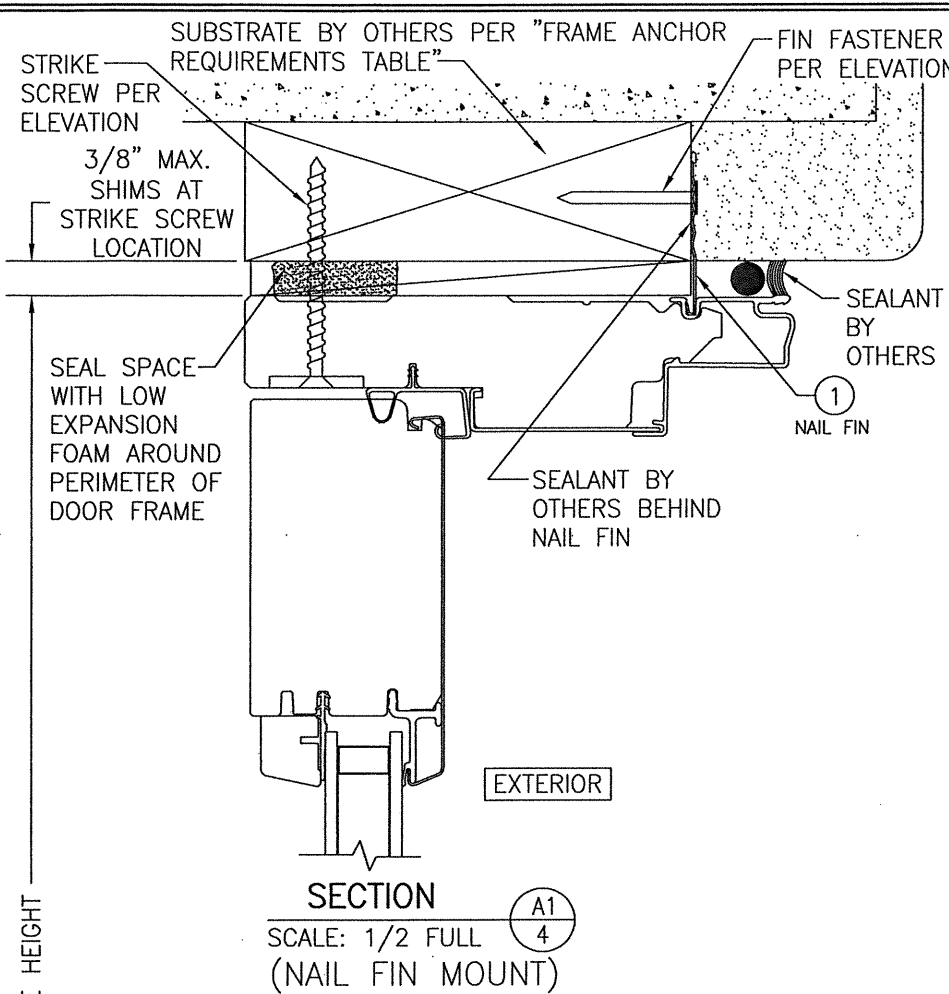
JOB INFORMATION:
PELLA CORPORATION
 102 MAIN STREET
 PELLA, IA 50219
 641-621-1000

CONSULTANTS
W. W. SCHAEFER ENGINEERING & CONSULTING, P.A. (REG. NO. F-14980)
 7480 150TH COURT NORTH
 PALM BEACH GARDENS, FL 33418
 PHONE: 561-744-3424

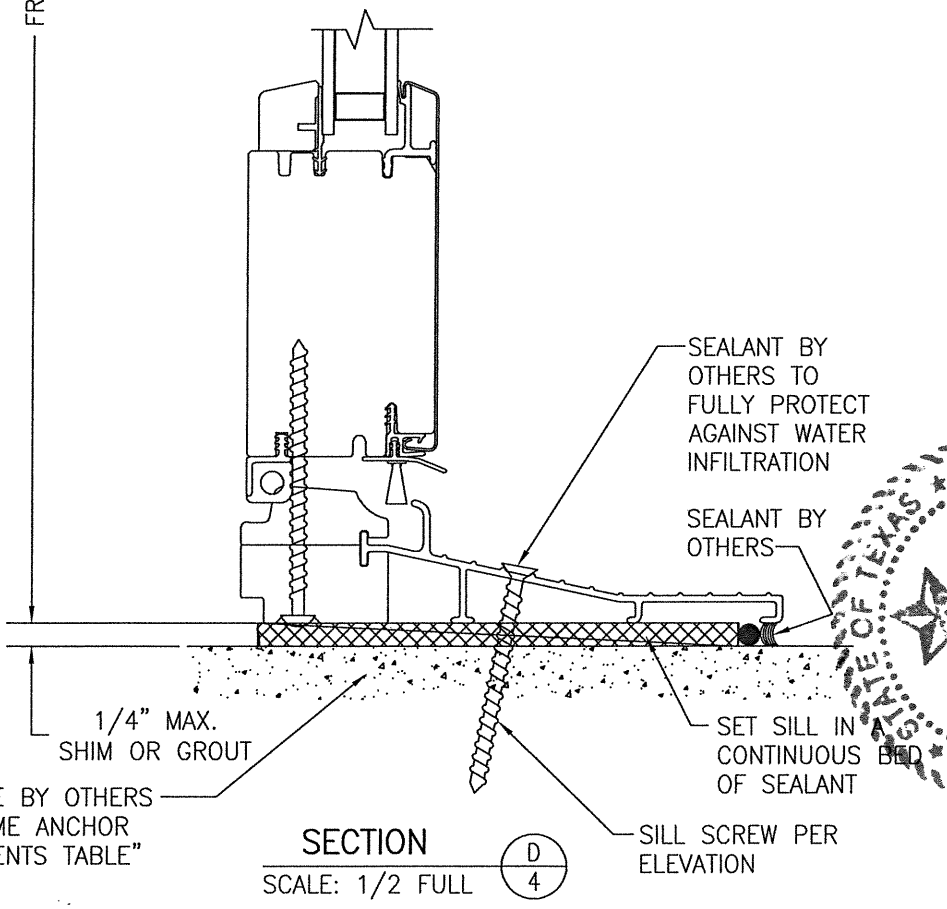
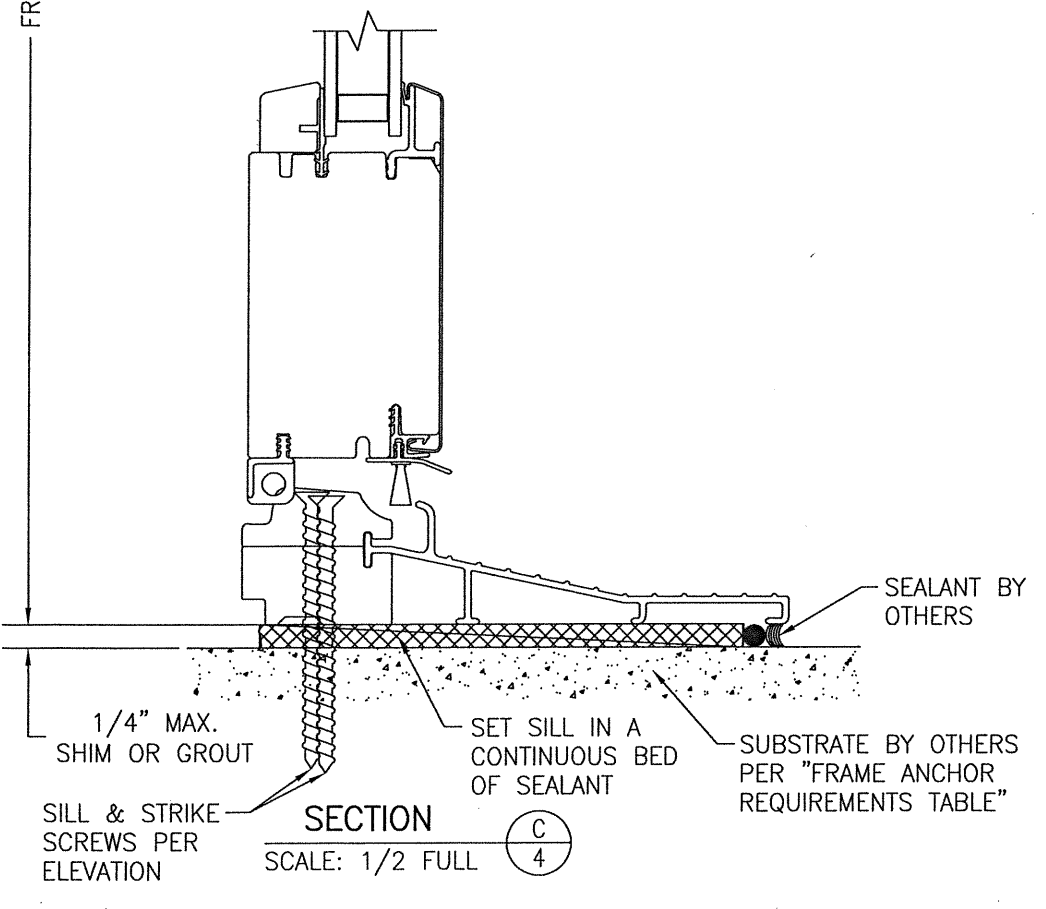
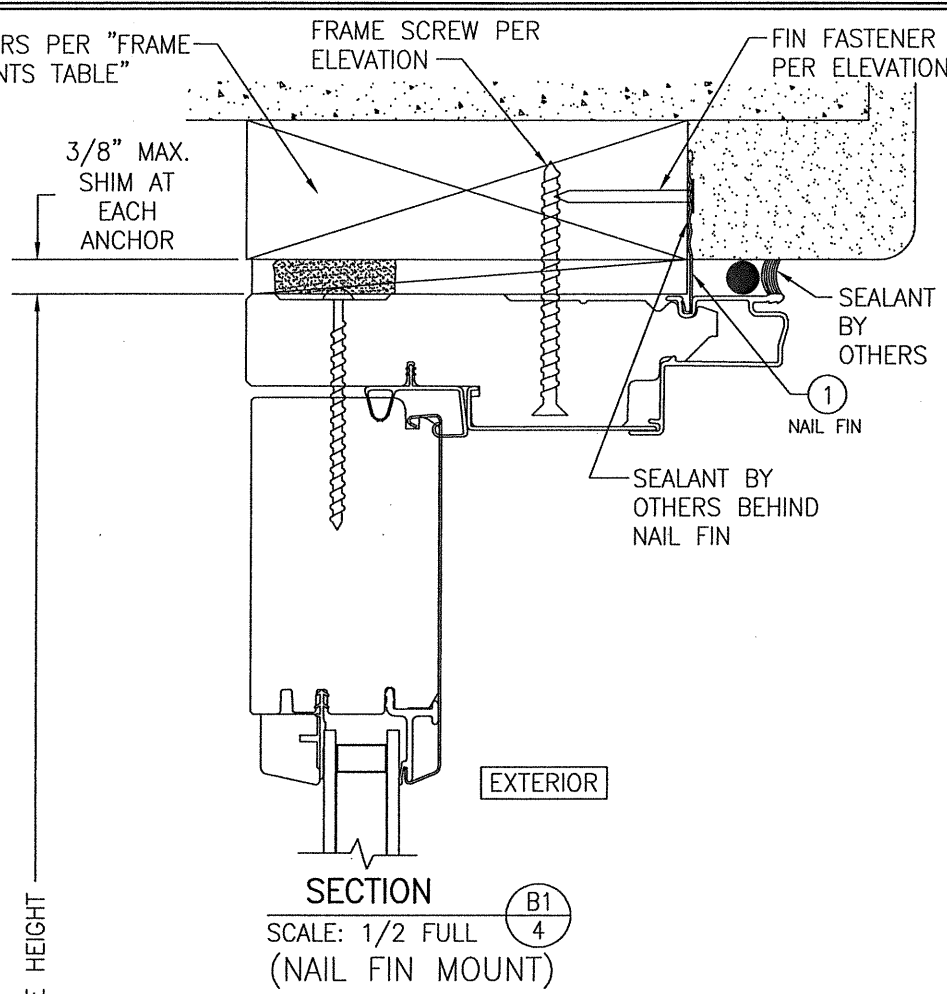
DRAWING TITLE
 LIFESTYLE SERIES NON-IMPACT CLAD IN-SWING DOOR


STATE OF TEXAS
 WARREN W. SCHAEFER
 113437
 PROFESSIONAL ENGINEER
 LICENSED
 JUL 17 2020
 WARREN W. SCHAEFER, P.E.
 P.E. NO. 113437

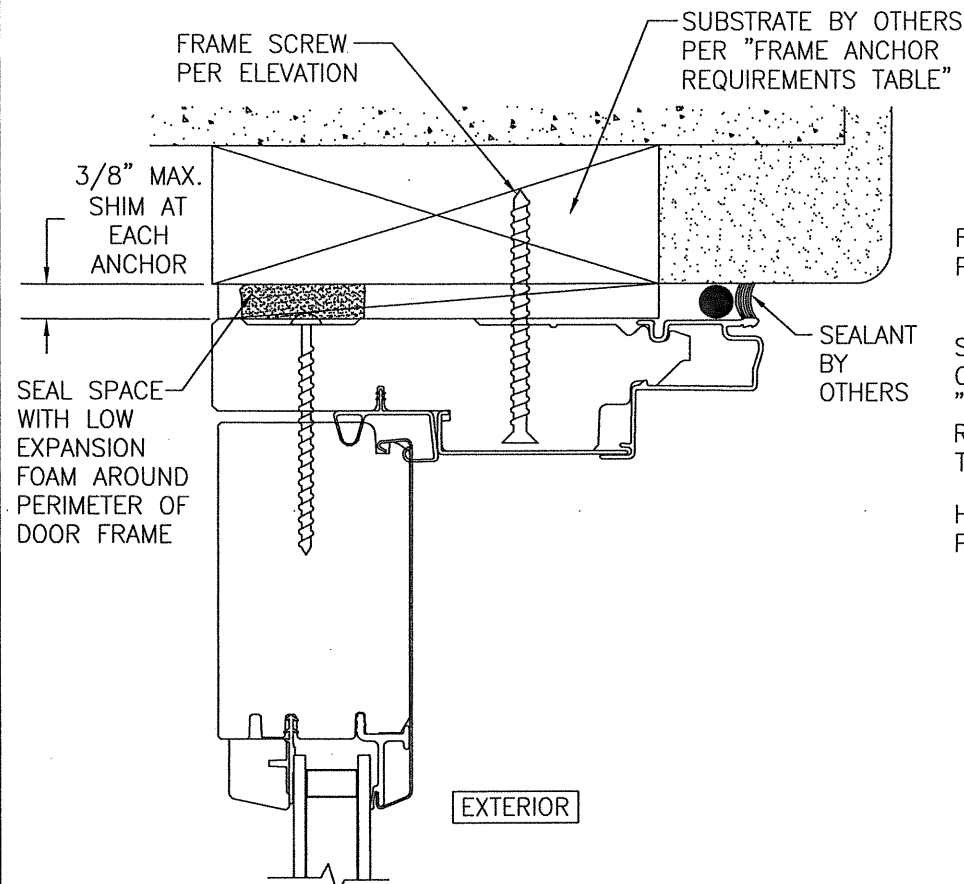
DRAWING NO. 1239T	REV.
SHEET NO. 3	OF 7



FRAME SCREW MOUNT SHOWN. SEE DETAILS ON SHEET 7 FOR DIRECT MOUNT & CLIP MOUNT DETAILS.

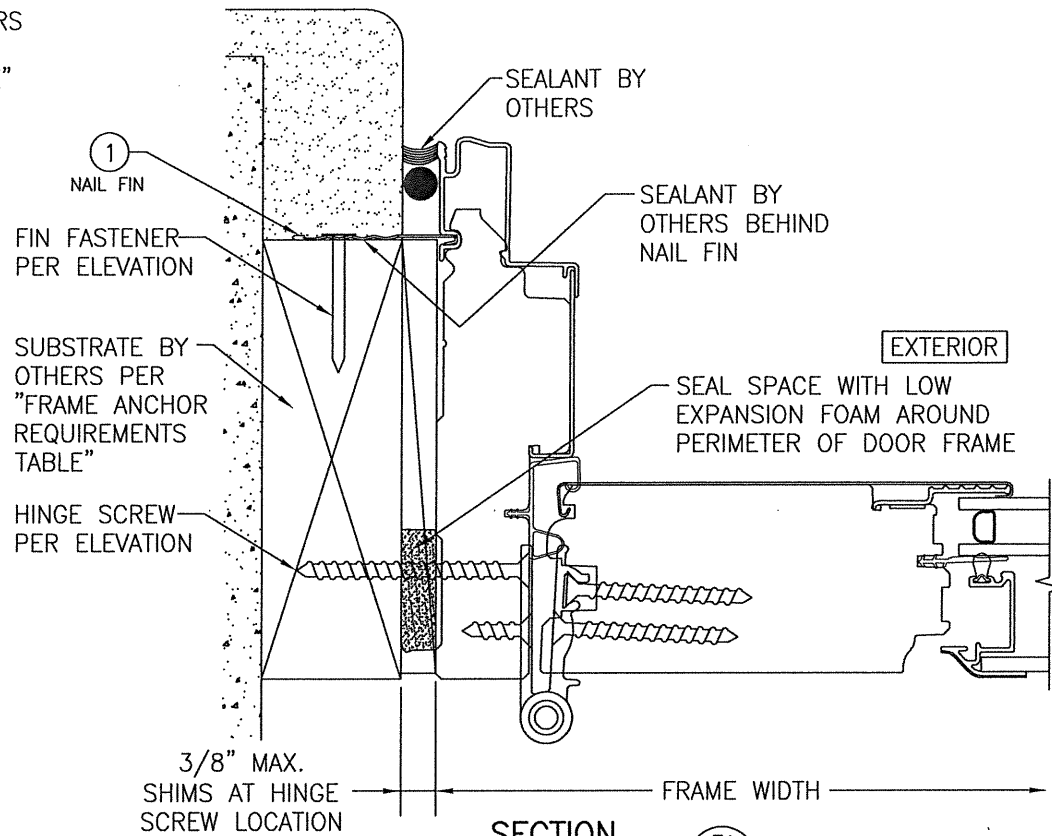


DRAWN BY: W.W.S.		CHECKED BY: W.W.S.	
PLOT: 1=2		DATE: 03/12/15	
NO.	REVISION DESCRIPTION	DATE	BY
DRAWING TITLE: LIFESTYLE SERIES NON-IMPACT CLAD IN-SWING DOOR JOB INFORMATION: PELLA CORPORATION 102 MAIN STREET PELLA, IA 50219 641-621-1000 			
CONSULTANTS: W. W. SCHAEFER ENGINEERING & CONSULTING, P.A. (REG. NO. F-14980) 7480 150TH COURT NORTH PALM BEACH GARDENS, FL 33418 PHONE: 561-744-3424			
CERTIFICATION: WARREN W. SCHAEFER REGISTERED PROFESSIONAL ENGINEER STATE OF TEXAS JUL 17 2020 LICENSE NO. 14527		DRAWING NO. 1239T SHEET NO. 4 OF 7	

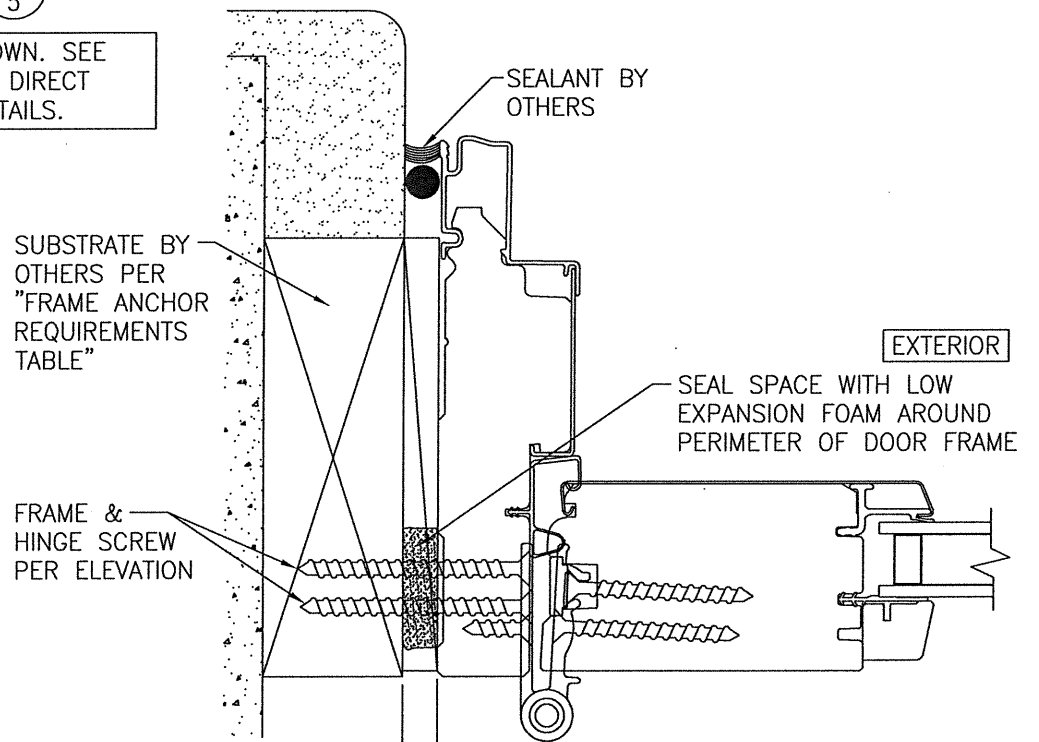


SECTION B2
SCALE: 1/2 FULL 5

FRAME SCREW MOUNT SHOWN. SEE DETAILS ON SHEET 7 FOR DIRECT MOUNT & CLIP MOUNT DETAILS.

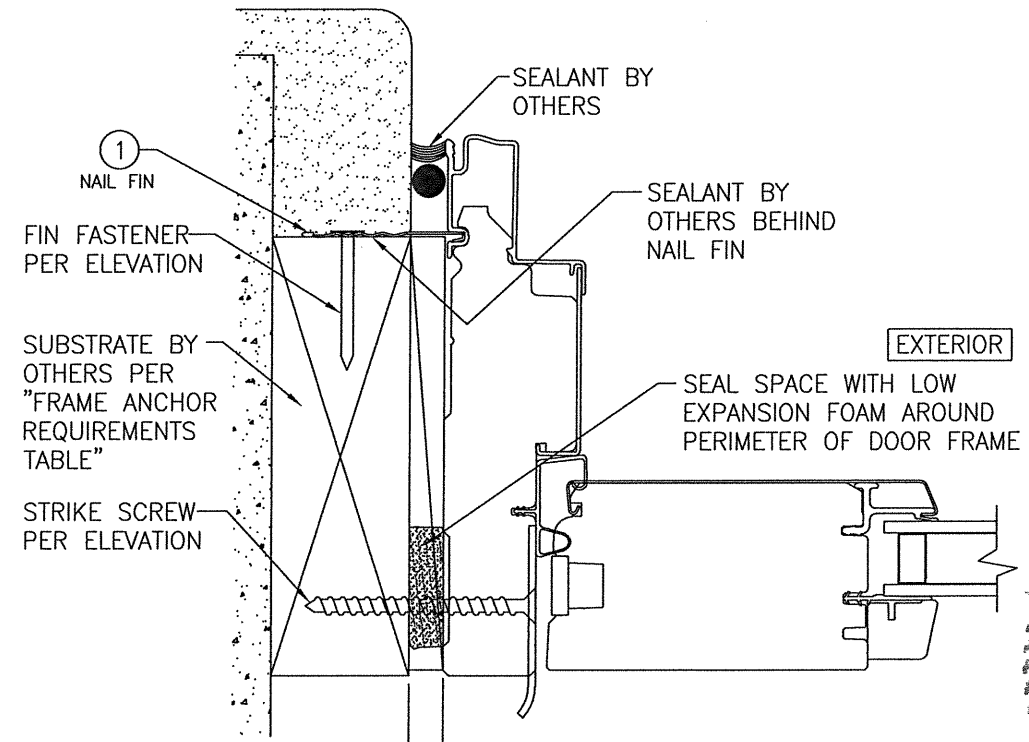


SECTION E1
SCALE: 1/2 FULL 5
(NAIL FIN MOUNT)



SECTION E2
SCALE: 1/2 FULL 5

FRAME SCREW MOUNT SHOWN. SEE DETAILS ON SHEET 7 FOR DIRECT MOUNT & CLIP MOUNT DETAILS.

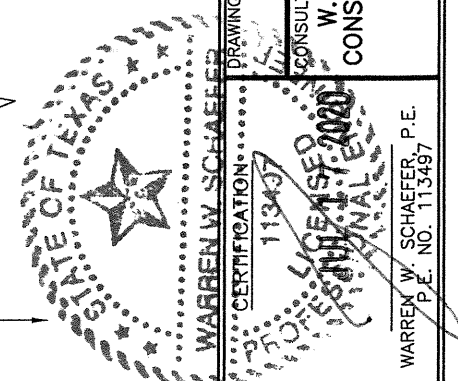


SECTION F1
SCALE: 1/2 FULL 5
(NAIL FIN MOUNT)

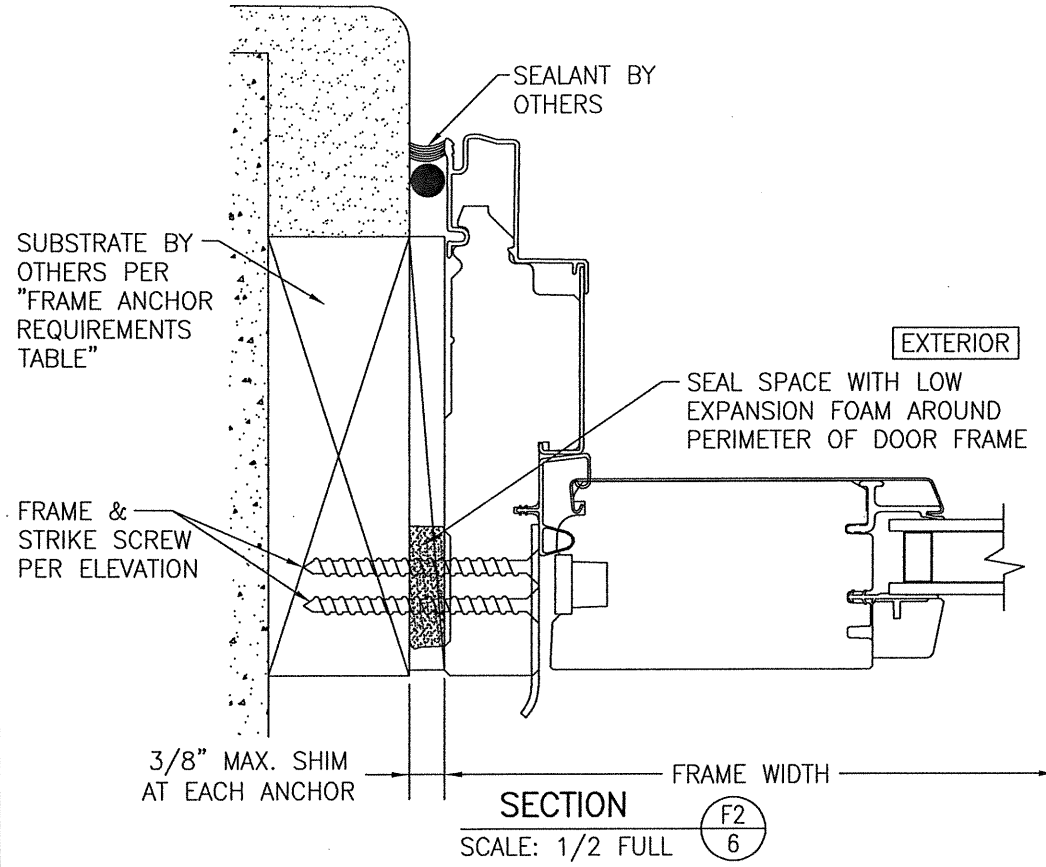
DRAWN BY: W.W.S.	CHECKED BY: W.W.S.
PLOT: 1=2	DATE: 03/12/15
DATE	
BY	
REVISION DESCRIPTION	
NO.	

JOB INFORMATION:
LIFESTYLE SERIES NON-IMPACT CLAD IN-SWING DOOR
PELLA CORPORATION
102 MAIN STREET
PELLA, IA 50219
641-621-1000

CONSULTANTS
W. W. SCHAEFER ENGINEERING & CONSULTING, P.A. (REG. NO. F-14980)
7480 150TH COURT NORTH
PALM BEACH GARDENS, FL 33418
PHONE: 561-744-3424

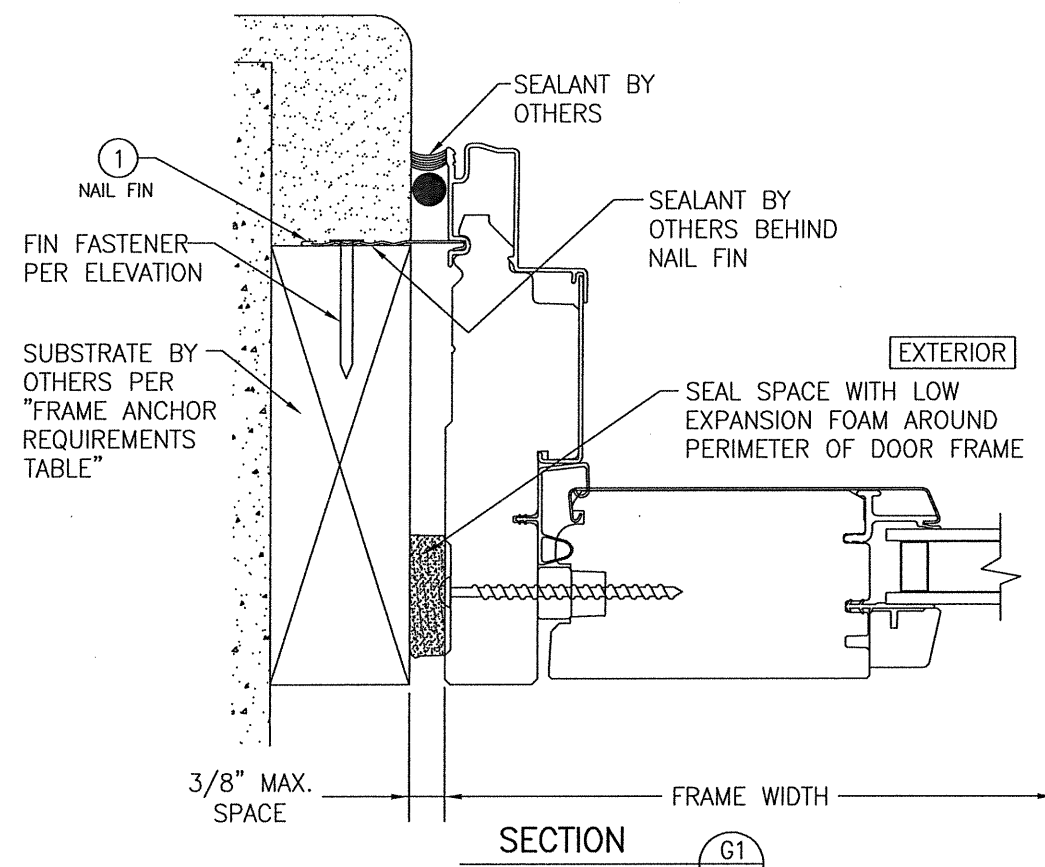


DRAWING NO. 1239T	REV.
SHEET NO. 5	OF 7

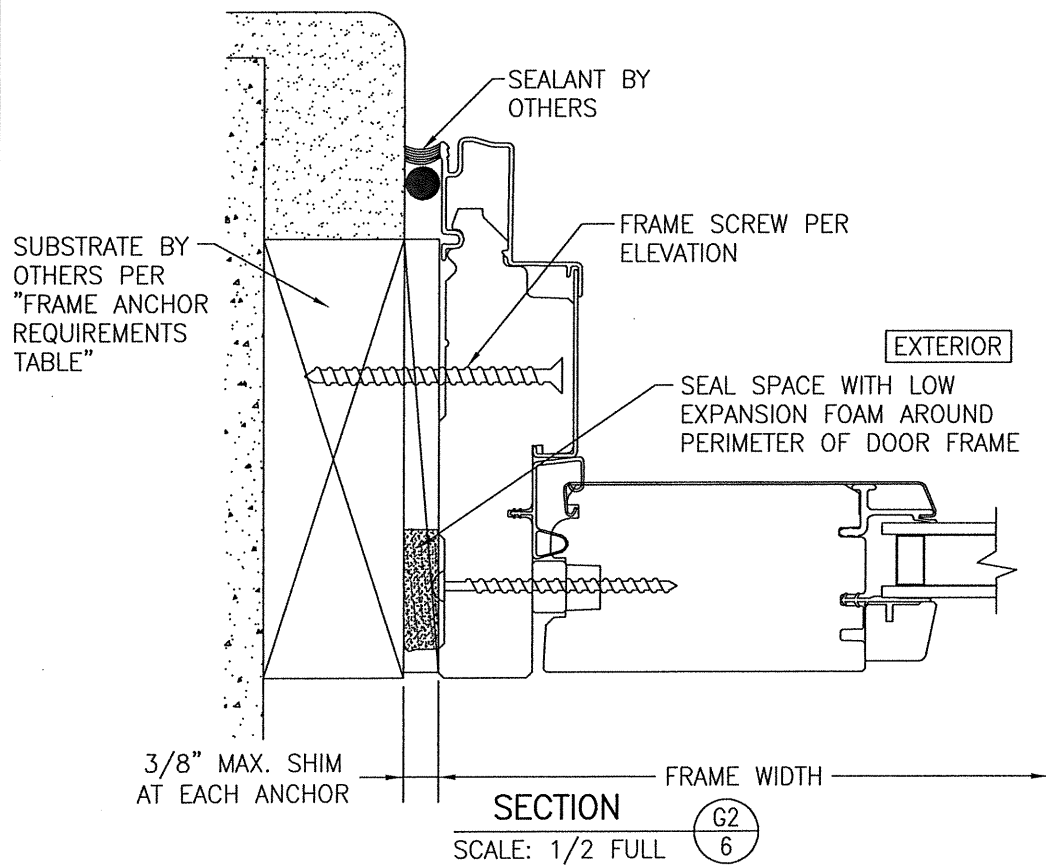


SECTION (F2)
SCALE: 1/2 FULL (6)

FRAME SCREW MOUNT SHOWN. SEE DETAILS ON SHEET 7 FOR DIRECT MOUNT & CLIP MOUNT DETAILS.


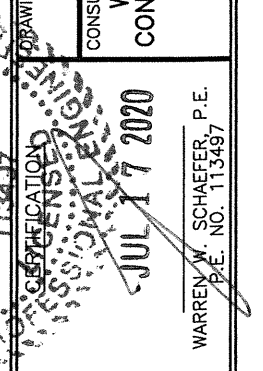


SECTION (G1)
SCALE: 1/2 FULL (6)
(NAIL FIN MOUNT)

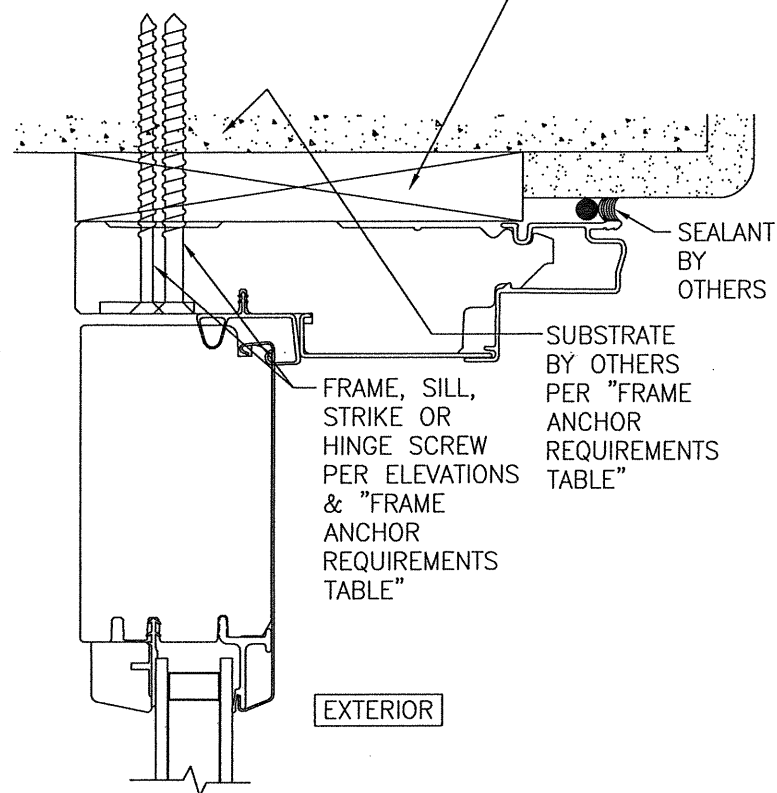


SECTION (G2)
SCALE: 1/2 FULL (6)

FRAME SCREW MOUNT SHOWN. SEE DETAILS ON SHEET 7 FOR DIRECT MOUNT & CLIP MOUNT DETAILS.

DRAWN BY: W.W.S.	CHECKED BY: W.W.S.
PLOT: 1=2	DATE: 03/12/15
DATE	
BY	
REVISION DESCRIPTION	
NO.	
DRAWING TITLE: LIFESTYLE SERIES NON-IMPACT CLAD IN-SWING DOOR CONSULTANTS: W. W. SCHAEFER ENGINEERING & CONSULTING, P.A. (REG. NO. F-14980) 7480 150TH COURT NORTH, PALM BEACH GARDENS, FL 33418, PHONE: 561-744-3424 JOB INFORMATION: PELLA CORPORATION, 102 MAIN STREET, PELLA, IA 50219, 641-621-1000 	
 WARREN W. SCHAEFER, P.E. P.E. NO. 113497	
DRAWING NO. 1239T	REV.
SHEET NO. 6	OF 7

CONTINUOUS WOOD MEMBER LESS IN THICKNESS THAN A 2X_ BUCK TO BE MIN. 4 3/4" DEEP (NOT REQUIRED WHEN SHIM SPACE IS WITHIN ALLOWABLE DIMENSIONS SHOWN IN SECTIONS).

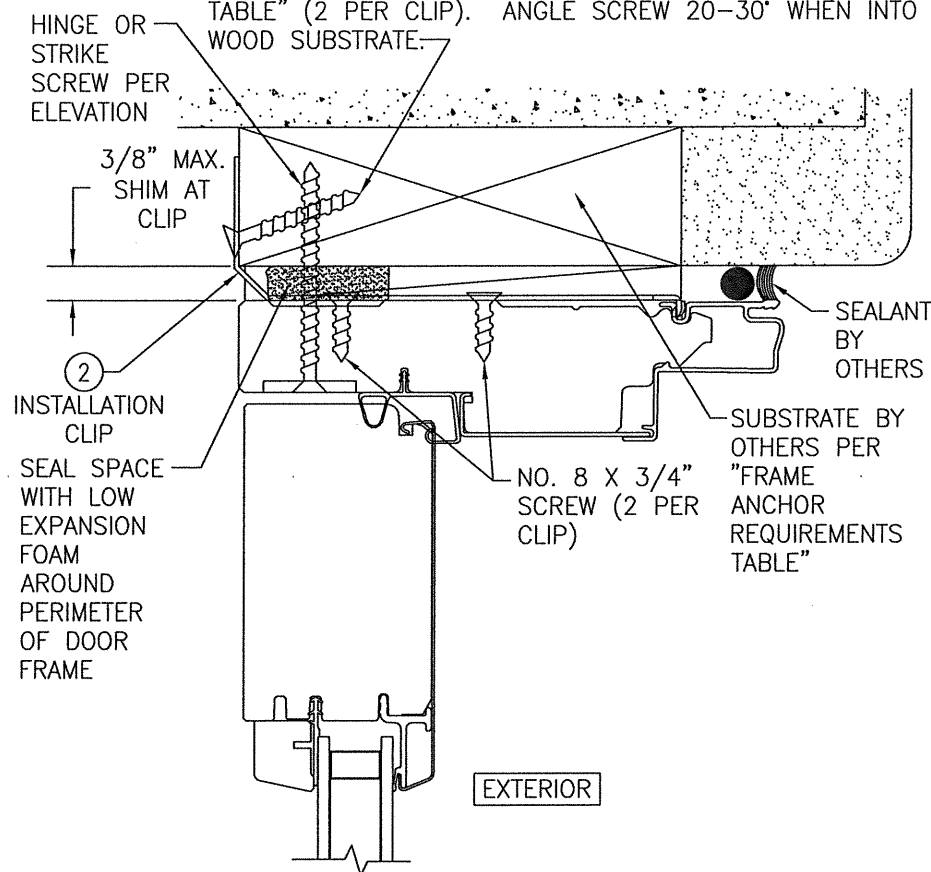


OPTIONAL DIRECT MOUNT DETAIL TO SUBSTRATE WITH SPACER

(HEAD SECTION SHOWN; SILL & SIDES ARE INSTALLED THE SAME)
(FOR DETAIL NOT SHOWN, SEE OTHER SECTIONS)

(OPERABLE DOOR SHOWN, FIXED PANEL DOORS ALSO APPLY)

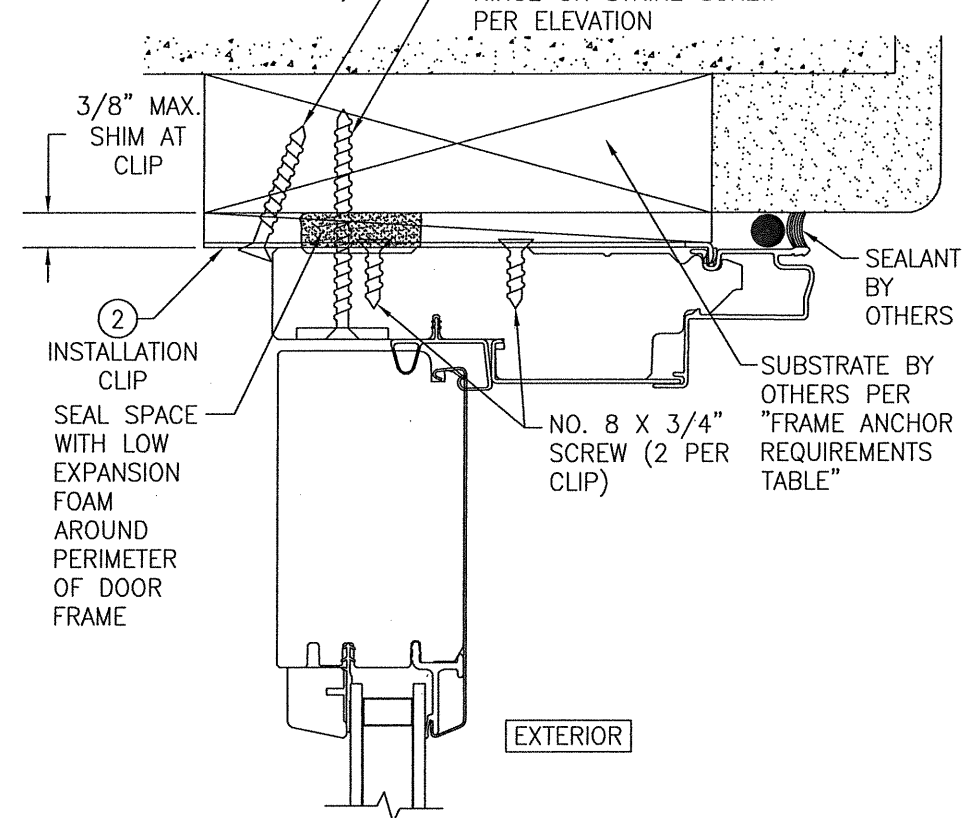
INSTALLATION CLIP SCREW PER "FRAME ANCHOR REQUIREMENTS TABLE" (2 PER CLIP). ANGLE SCREW 20-30° WHEN INTO WOOD SUBSTRATE.



STANDARD INSTALLATION CLIP DETAIL

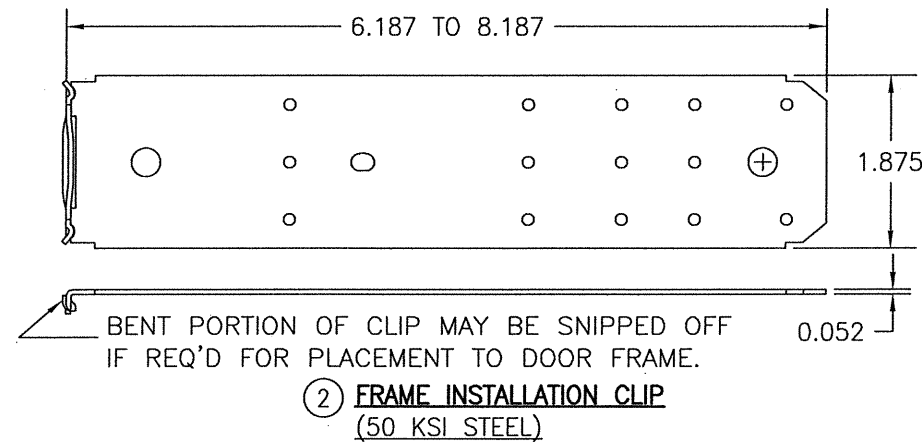
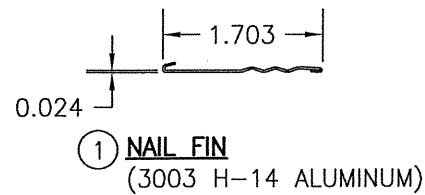
(HEAD SECTION SHOWN; SIDES ARE INSTALLED THE SAME)
(FOR DETAIL NOT SHOWN, SEE OTHER SECTIONS)
(OPERABLE DOOR SHOWN, FIXED PANEL DOORS ALSO APPLY)
(INSTALLATION CLIPS ARE NOT APPLICABLE AT SILL)

INSTALLATION CLIP SCREW PER "FRAME ANCHOR REQUIREMENTS TABLE" (2 PER CLIP ANGLED 15 TO 20 DEGREES IF NECESSARY TO MEET EDGE DISTANCE REQUIREMENTS)




ALTERNATE INSTALLATION CLIP DETAIL

(HEAD SECTION SHOWN; SIDES ARE INSTALLED THE SAME)
(FOR DETAIL NOT SHOWN, SEE OTHER SECTIONS)
(OPERABLE DOOR SHOWN, FIXED PANEL DOORS ALSO APPLY)
(INSTALLATION CLIPS ARE NOT APPLICABLE AT SILL)



② **FRAME INSTALLATION CLIP**
(50 KSI STEEL)

DRAWN BY: W.W.S.	CHECKED BY: W.W.S.
PLOT: 1=2	DATE: 03/12/15
DATE	BY
REVISION DESCRIPTION	NO.
DRAWING TITLE: LIFESTYLE SERIES NON-IMPACT CLAD IN-SWING DOOR JOB INFORMATION: PELLA CORPORATION 102 MAIN STREET PELLA, IA 50219 641-621-1000 	
CONSULTANTS: W. W. SCHAEFER ENGINEERING & CONSULTING, P.A. (REG. NO. F-14980) 7480 150TH COURT NORTH PALM BEACH GARDENS, FL 33418 PHONE: 561-744-3424	
CERTIFICATION: WARREN W. SCHAEFER 113437 LICENSED PROFESSIONAL ENGINEER STATE OF TEXAS JUL 17 2020 WARREN W. SCHAEFER, P.E. P.E. NO. 113497	
DRAWING NO. 1239T	REV.
SHEET NO. 7	OF 7