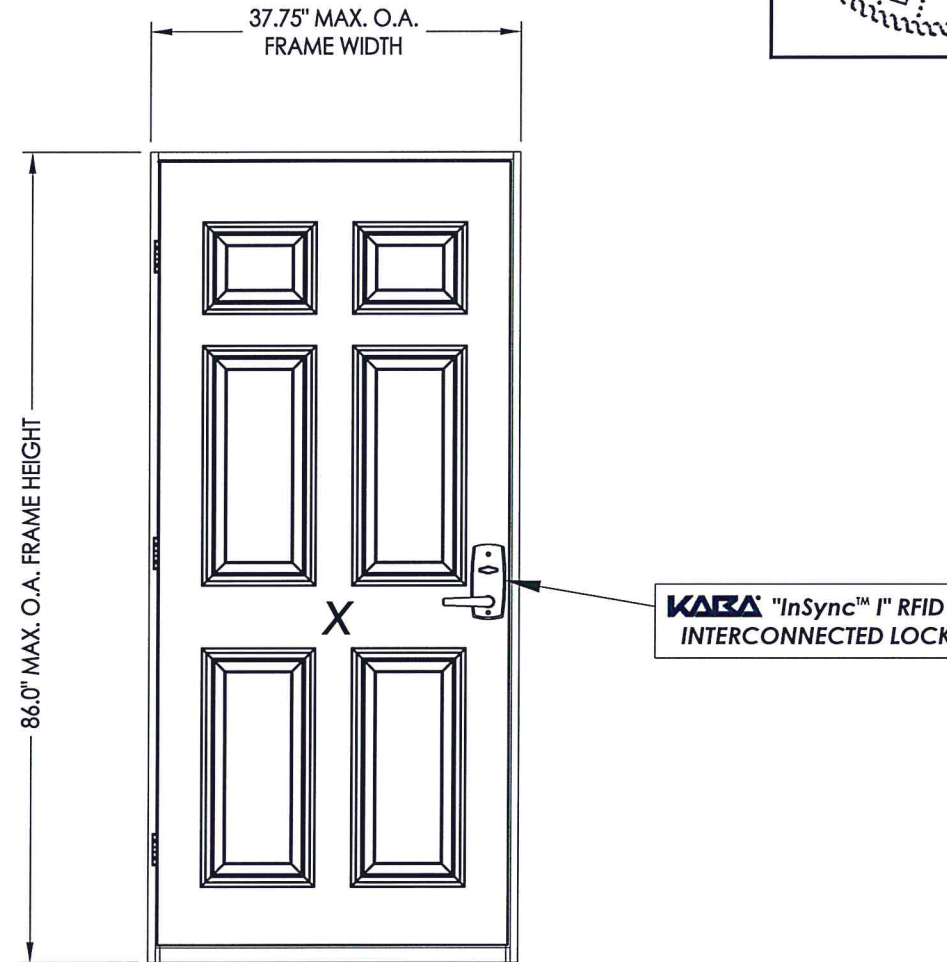




Kaba Access and Data Systems
 2941 Indiana Avenue, Winston-Salem, NC 27105
 Ph. 800.849.8324

"InSync™ I" RFID INTERCONNECTED LOCK

in a
FIBERGLASS DOOR
 INSWING / OUTSWING
 "IMPACT"



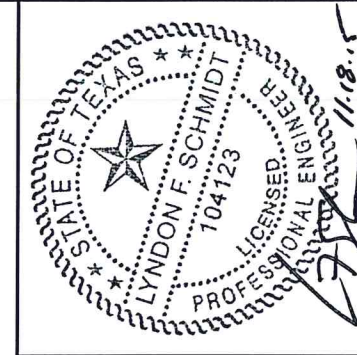
EVALUATED FOR USE IN THE STATE OF TEXAS

The Fiberglass Door System described herein complies with the 2006 International Residential Code (IRC), Sections R301 & R613 and the 2006 International Building Code (IBC), Sections 1405.12, 1609, 1714.5, 2403 and 2404 (including Texas revisions) subject to the following conditions:

1. Anchors shall be as listed and spaced as shown in the details. Anchor embedment to base material shall be beyond wall dressing or stucco.
2. This system has been tested and evaluated as a large missile impact protective system for installation in the Seaward, Inland I and Inland II areas. This product meets missile level "D" as defined in ASTM E 1996.
3. Allowable design pressure requirements must be equal to or less than the design pressure rating shown in the design pressure chart, sheet 1 of this drawing.
4. Conditions not covered by this drawing are subject to further engineering analysis.

TABLE OF CONTENTS	
SHEET#	DESCRIPTION
1	Typical elevations, design pressures & general notes
2	Door panel details
3	Vertical cross sections
4	Horizontal cross section
5	Frame anchoring details
6	Bill of materials and components

MAX FRAME DIMENSION	DOOR PANEL MANUFACTURER	SWING	DESIGN PRESSURE (PSF)	
			POSITIVE	NEGATIVE
37.75" x 86.0"	Therma-Tru	INSWING	+65.0	-75.0
37.75" x 84.5"	Therma-Tru	OUTSWING	+65.0	-65.0



Documents Prepared By: Lyndon F. Schmidt, P.E.
 TEXAS P.E. #104123

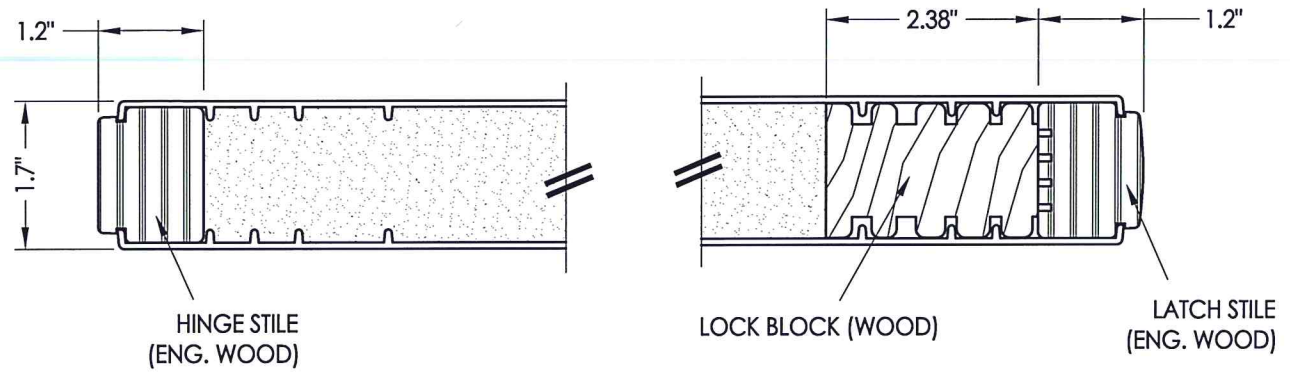
RW BUILDING CONSULTANTS, INC.
 P.O. Box 230 Valrico FL 33595
 Phone No.: 813.659.9197

TEXAS BOARD OF PROFESSIONAL ENGINEERS
 CERTIFICATE OF REGISTRATION # F-11852

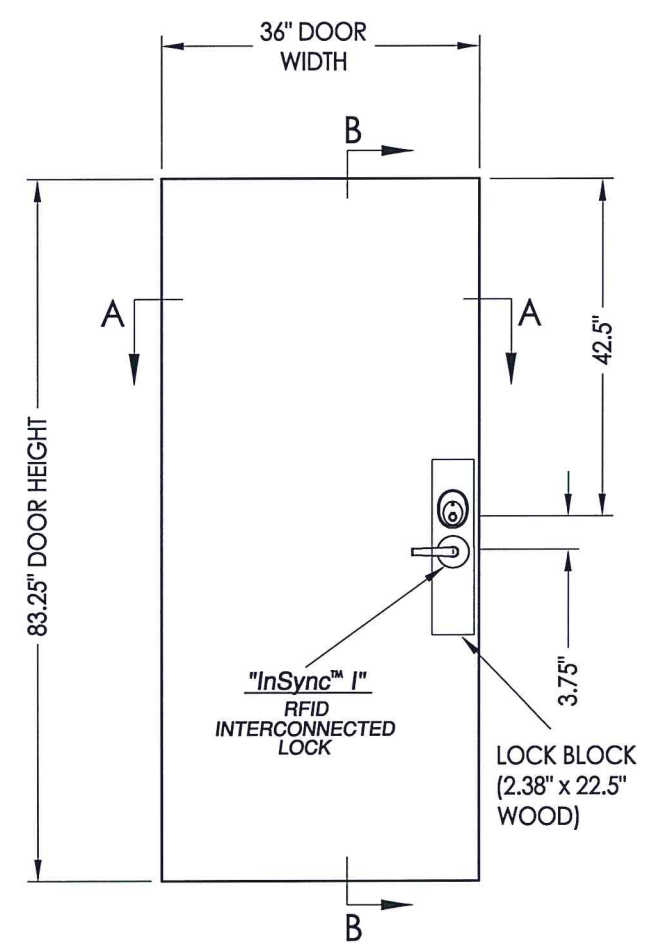
PRODUCT: PLASTPRO FIBERGLASS DOOR
 PART OR ASSEMBLY: TYPICAL ELEVATIONS, DESIGN PRESSURES & GENERAL NOTES

NO.	DATE	BY	REVISIONS

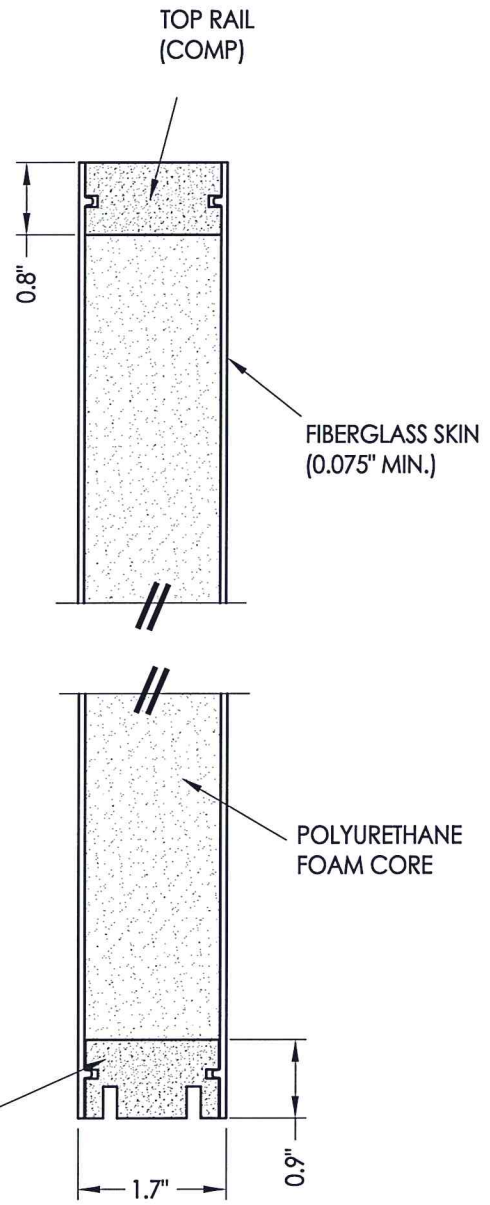
DATE: 1/07/15
 SCALE: N.T.S.
 DWG. BY: JK
 CHK. BY: LFS
 DRAWING NO.: TX-4523
 SHEET 1 OF 6



SECTION A-A



40 FIBERGLASS DOOR PANEL
Therma-Tru 7' 0"



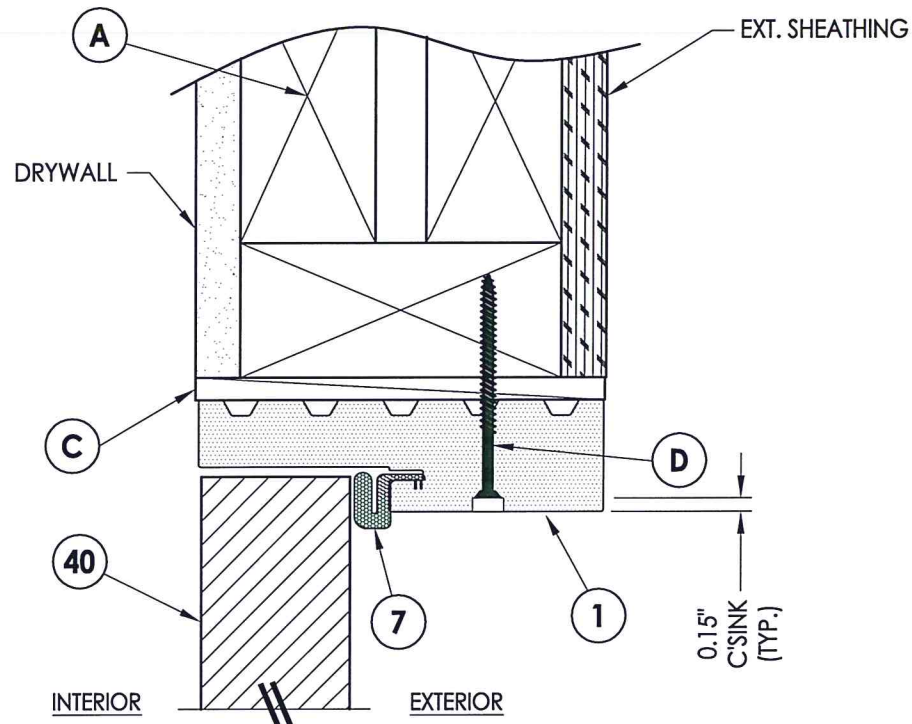
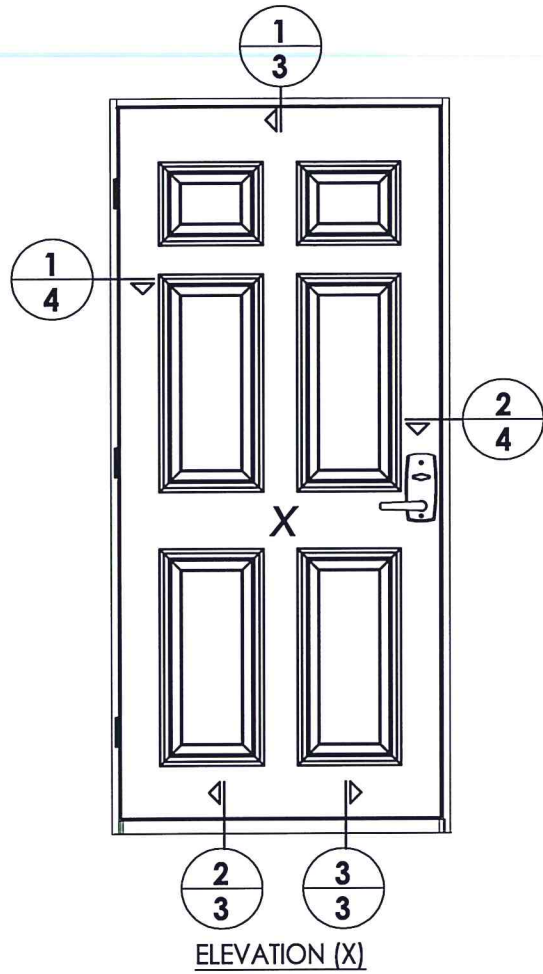
SECTION B-B



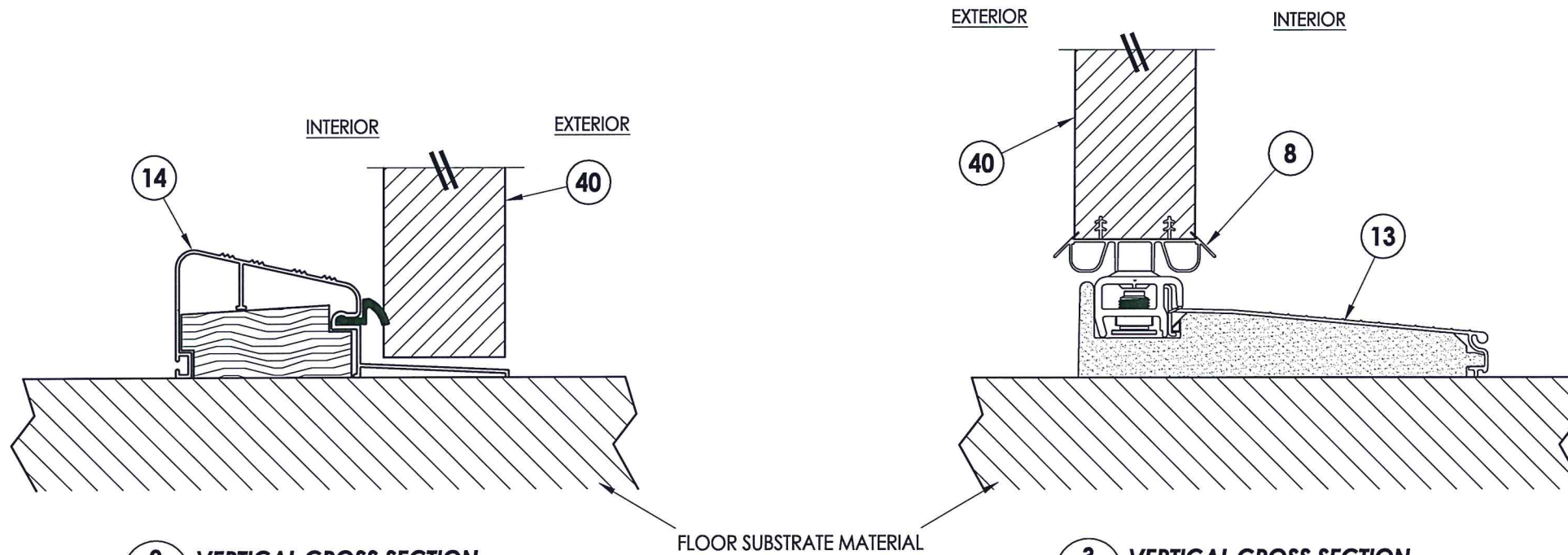
Documents Prepared By: Lyndon F. Schmidt, P.E.
TEXAS P.E. #104123

RW BUILDING CONSULTANTS, INC.
P.O. Box 230 Vairico FL 33595
Phone No.: 813.659.9197
TEXAS BOARD OF PROFESSIONAL ENGINEERS
CERTIFICATE OF REGISTRATION # F-11852

PRODUCT: KABA RFID LOCK FIBERGLASS DOOR	
PART OR ASSEMBLY:	
DOOR PANELS DETAILS	
NO.	DATE
BY	REVISIONS
DATE: 1/07/15	
SCALE: N.T.S.	
DWG. BY: JK	
CHK. BY: LFS	
DRAWING NO.: TX-4523	
SHEET 2 OF 6	

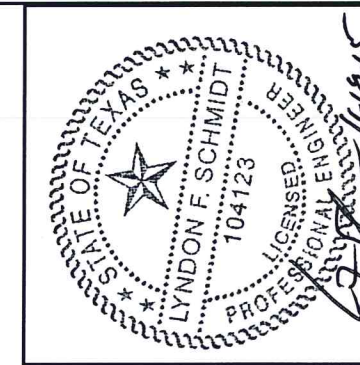


1/3 VERTICAL CROSS SECTION
Inswing shown (Outswing similar)



2/3 VERTICAL CROSS SECTION
Outswing configuration

3/3 VERTICAL CROSS SECTION
Inswing configuration



Documents Prepared By: Lyndon F. Schmidt, P.E.
TEXAS P.E. #104123

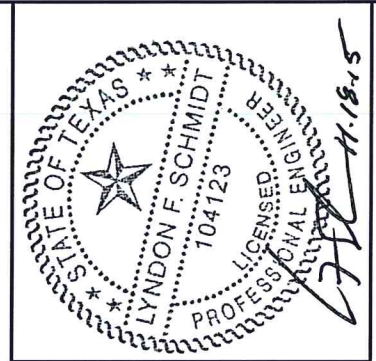
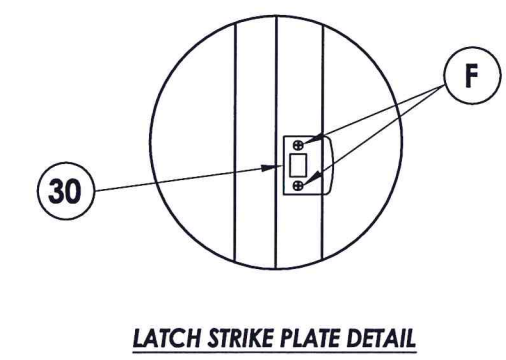
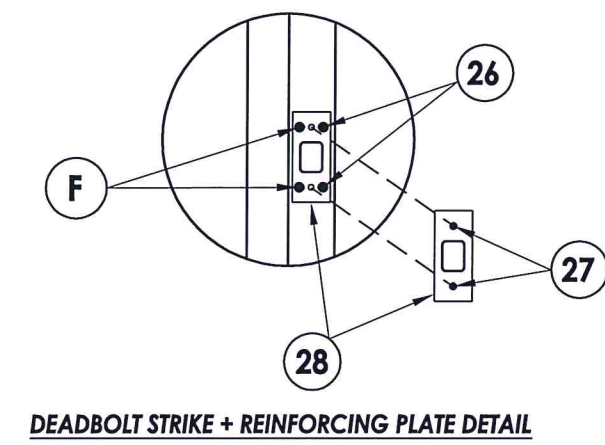
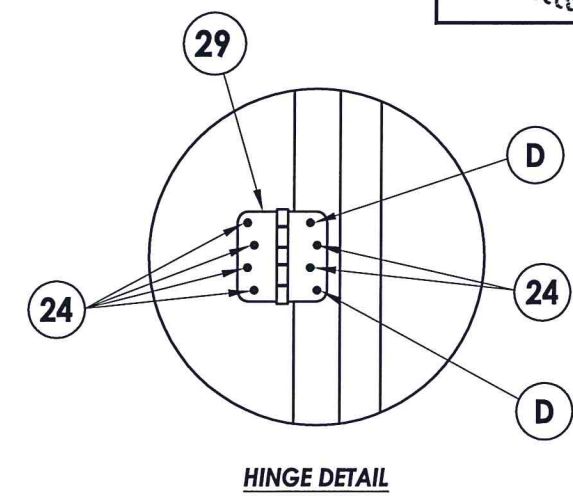
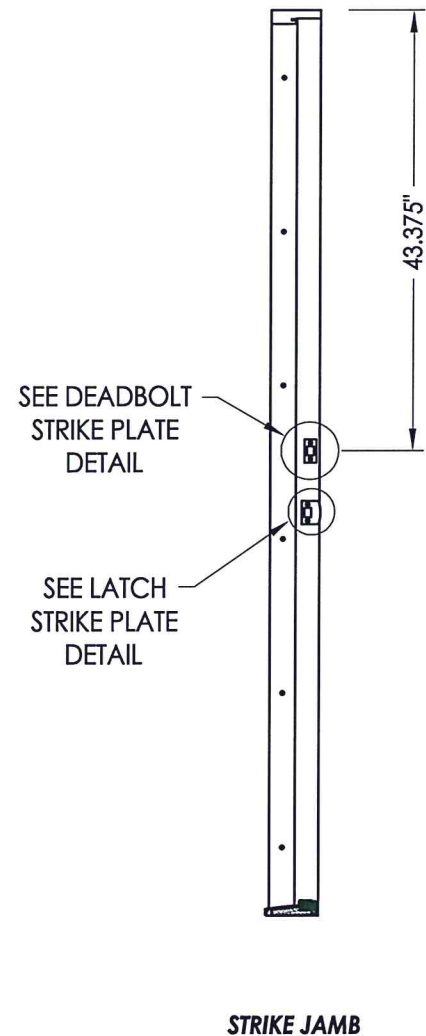
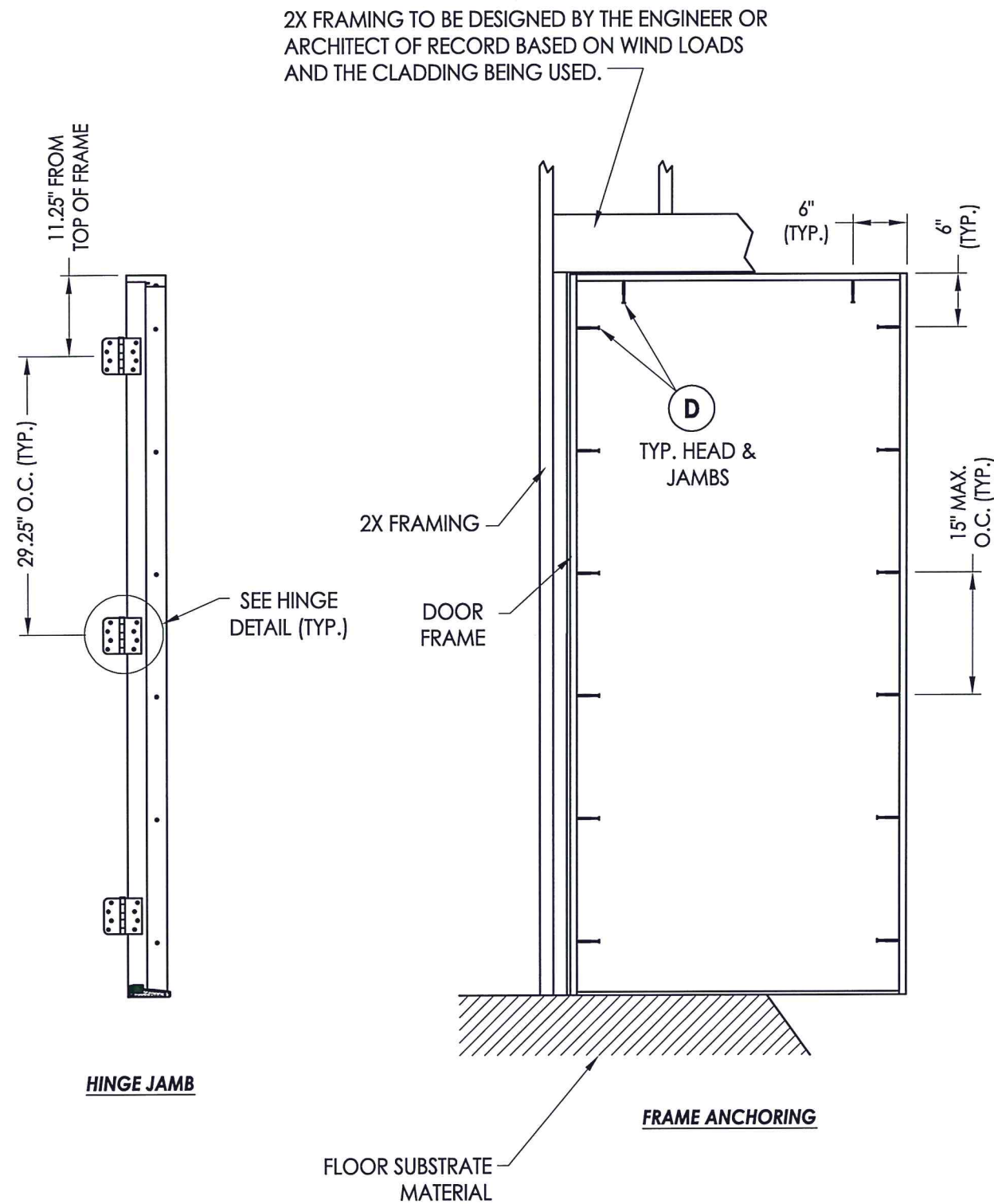
RW BUILDING CONSULTANTS, INC.
P.O. Box 230 Vairico FL 33595
Phone No.: 813.659.9197

TEXAS BOARD OF PROFESSIONAL ENGINEERS
CERTIFICATE OF REGISTRATION # F-11852

PRODUCT: KABA RFID LOCK FIBERGLASS DOOR
PART OR ASSEMBLY: VERTICAL CROSS SECTIONS

NO.	DATE	BY	REVISIONS

DATE: 1/07/15
SCALE: N.T.S.
DWG. BY: JK
CHK. BY: LFS
DRAWING NO.: TX-4523
SHEET 3 OF 6



Documents Prepared By: Lyndon F. Schmidt, P.E.
TEXAS P.E. #104123

RW BUILDING CONSULTANTS, INC.
P.O. Box 230 Vairico FL, 33596
Phone No.: 813.659.9197

TEXAS BOARD OF PROFESSIONAL ENGINEERS
CERTIFICATE OF REGISTRATION # F-11652

PRODUCT: KABA RFID LOCK FIBERGLASS DOOR

PART OR ASSEMBLY: FRAME ANCHORING DETAILS

NO.	DATE	BY	REVISIONS

DATE: 1/07/15

SCALE: N.T.S.

DWG. BY: JK

CHK. BY: LFS

DRAWING NO.: TX-4523

SHEET 5 OF 6

