

ANDERSEN CORPORATION

A-SERIES OUTSWING DOOR - IMPACT



100 FOURTH AVE NORTH
BAYPORT, MN 55003-1096
PH: (651) 264-5150 FX: (651) 264-5485

INSTALLATION NOTES:

- ONE (1) INSTALLATION ANCHOR IS REQUIRED AT EACH ANCHOR LOCATION SHOWN, UNLESS OTHERWISE STATED.
- THE NUMBER OF INSTALLATION ANCHORS DEPICTED IS THE MINIMUM NUMBER OF ANCHORS TO BE USED FOR PRODUCT INSTALLATION.
- INSTALL INDIVIDUAL INSTALLATION ANCHORS WITHIN A TOLERANCE OF ±1/2 INCH OF THE DEPICTED LOCATION IN THE ANCHOR LAYOUT DETAIL (I.E., WITHOUT CONSIDERATION OF TOLERANCES). TOLERANCES ARE NOT CUMULATIVE FROM ONE INSTALLATION ANCHOR TO THE NEXT.
- FOR INSTALLATION THROUGH 1X BUCK TO CONCRETE/MASONRY, OR DIRECTLY INTO CONCRETE/MASONRY, USE 3/16 INCH ITW TAPCON OF SUFFICIENT LENGTH TO ACHIEVE 1 1/4 INCH MINIMUM EMBEDMENT.
- FOR INSTALLATION INTO 2X BUCK USE #10 WOOD SCREW OF SUFFICIENT LENGTH TO ACHIEVE 1 1/2 INCH MINIMUM EMBEDMENT INTO WOOD SUBSTRATE.
- FOR INSTALLATION THROUGH METAL FRAME USE #10 SELF-TAPPING SCREW OF SUFFICIENT LENGTH TO ACHIEVE 3 THREADS MINIMUM PENETRATION BEYOND METAL FRAME SUBSTRATE.
- MINIMUM EMBEDMENT AND EDGE DISTANCE EXCLUDE WALL FINISHES, INCLUDING BUT NOT LIMITED TO STUCCO, FOAM, BRICK VENEER, AND SIDING.
- INSTALLATION ANCHORS AND ASSOCIATED HARDWARE MUST BE MADE OF CORROSION RESISTANT MATERIAL OR HAVE A CORROSION RESISTANT COATING.
- FOR HOLLOW BLOCK AND GROUT FILLED BLOCK, DO NOT INSTALL INSTALLATION ANCHORS INTO MORTAR JOINTS. EDGE DISTANCE IS MEASURED FROM FREE EDGE OF BLOCK OR EDGE OF MORTAR JOINT INTO FACE SHELL OF BLOCK.
- INSTALLATION ANCHORS SHALL BE INSTALLED IN ACCORDANCE WITH ANCHOR MANUFACTURER'S INSTALLATION INSTRUCTIONS, AND ANCHORS SHALL NOT BE USED IN SUBSTRATES WITH STRENGTHS LESS THAN THE MINIMUM STRENGTH SPECIFIED BY THE ANCHOR MANUFACTURER.
- INSTALLATION ANCHOR CAPACITIES FOR PRODUCTS HEREIN ARE BASED ON SUBSTRATE MATERIALS WITH THE FOLLOWING PROPERTIES:
 - WOOD - MINIMUM SPECIFIC GRAVITY OF 0.42.
 - CONCRETE - MINIMUM COMPRESSIVE STRENGTH OF 2700 PSI.
 - GROUT-FILLED CMU - UNIT STRENGTH CONFORMS TO ASTM C-90 WITH MINIMUM COMPRESSIVE STRENGTH OF 1924 PSI AND GROUT CONFORMS TO ASTM C 476, MINIMUM GROUT COMPRESSIVE STRENGTH OF 2000 PSI.
 - HOLLOW BLOCK CMU - UNIT STRENGTH CONFORMS TO ASTM C-90 WITH MINIMUM COMPRESSIVE STRENGTH OF 1924 PSI.
 - STEEL - MINIMUM YIELD STRENGTH OF 36 KSI. MINIMUM WALL THICKNESS OF 33 MILS (0.033" or 20 GAUGE). MIN. 1/2" EDGE DISTANCE.
 - ALUMINUM - MINIMUM 1/8" THICKNESS. (6063-T5)

GENERAL NOTES:

- THE PRODUCT SHOWN HEREIN IS DESIGNED AND MANUFACTURED TO COMPLY WITH THE 2006 INTERNATIONAL BUILDING CODE (IBC) AND INTERNATIONAL RESIDENTIAL CODE (IRC) WITH 2006 TEXAS REVISIONS, EFFECTIVE JANUARY 1, 2008 AND HAS BEEN EVALUATED ACCORDING TO THE FOLLOWING:
 - AAMA/WDMA/CSA 101/I.S.2/A440-08/11
 - ASTM E1886-02
 - ASTM E1996-02
- ADEQUACY OF THE EXISTING STRUCTURAL CONCRETE/MASONRY, 2X AND METAL STUD FRAMING AS A MAIN WIND FORCE RESISTING SYSTEM CAPABLE OF WITHSTANDING AND TRANSFERRING APPLIED PRODUCT LOADS TO THE FOUNDATION IS THE RESPONSIBILITY OF THE ENGINEER OR ARCHITECT OF RECORD FOR THE PROJECT OF INSTALLATION.
- 1X AND 2X BUCKS (WHEN USED) SHALL BE DESIGNED AND ANCHORED TO PROPERLY TRANSFER ALL LOADS TO THE STRUCTURE. BUCK DESIGN AND INSTALLATION IS THE RESPONSIBILITY OF THE ENGINEER OR ARCHITECT OF RECORD FOR THE PROJECT OF INSTALLATION.
- THE INSTALLATION DETAILS DESCRIBED HEREIN ARE GENERIC AND MAY NOT REFLECT ACTUAL CONDITIONS FOR A SPECIFIC SITE. IF SITE CONDITIONS CAUSE INSTALLATION TO DEVIATE FROM THE REQUIREMENTS DETAILED HEREIN, A LICENSED ENGINEER OR ARCHITECT SHALL PREPARE SITE SPECIFIC DOCUMENTS FOR USE WITH THIS DOCUMENT.
- APPROVED IMPACT PROTECTIVE SYSTEM IS NOT REQUIRED TO PROTECT THIS PRODUCT IN AREAS REQUIRING IMPACT RESISTANCE.
- DOOR FRAME MATERIAL: *PONDEROSA PINE OR EQUIVALENT WITH FIBERGLASS CLADDING.*
(MIN SG = 0.40)
- GLASS MEETS THE REQUIREMENTS OF ASTM E1300-04 GLASS CHARTS. SEE SHEET 4 FOR GLAZING DETAILS..
- DESIGNATIONS "X" AND "O" STAND FOR THE FOLLOWING:
X: OPERABLE PANEL
O: FIXED PANEL
- CUSTOM SIZES AVAILABLE UPON REQUEST. CUSTOM DESIGN PRESSURE WILL BE ASSIGNED EQUAL TO NEXT LARGER STANDARD SIZE.
- WOOD COMPONENTS SHALL HAVE BEEN PRESERVATIVE TREATED OR SHALL BE OF A DURABLE SPECIES AS DEFINED IN SECTION 2326.2.
- DISSIMILAR METALS INCLUDING FASTENERS THAT MAY COME INTO CONTACT WITH ALUMINUM UNIT FRAMING SHALL HAVE A PROTECTIVE COATING.

TABLE OF CONTENTS		
SHEET	REVISION	SHEET DESCRIPTION
1	-	GENERAL AND INSTALLATION NOTES
2	-	ELEVATION AND ANCHOR LAYOUT
3	-	ELEVATION AND ANCHOR LAYOUT
4	A	PRESSURE TABLES & GLAZING DETAILS
5	-	VERTICAL SECTIONS
6	-	HORIZONTAL SECTIONS
7	-	COMPONENTS & BILL OF MATERIALS

WATER RATING	MISSILE IMPACT RATING
W/ WATER INFILTRATION	LARGE AND SMALL MISSILE IMPACT RATED

TITLE: A-SERIES FWOD
GENERAL AND INTALLATION NOTES
PREPARED BY: BUILDING DROPS, INC.
398 E. DANIA BEACH BLVD. #338
DANIA BEACH, FL 33004
PH: (954) 399-8478 FX: (954) 744-4738

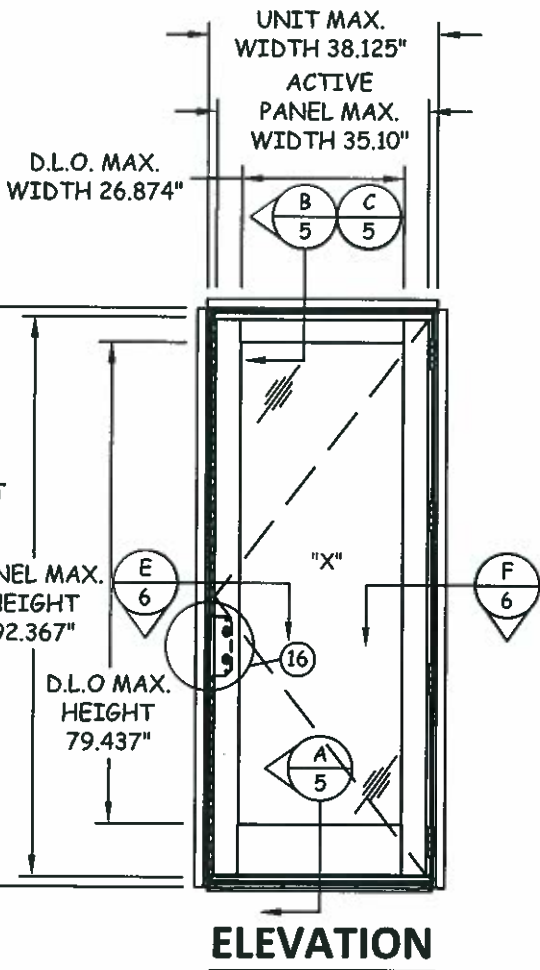
NO.	DESCRIPTION	BY	DATE
		MS	4.30.14
A	UPDATE GLAZING DETAILS		

[Handwritten Signature]
8-6-2015
HERNAN F. MORRIS, P.E.
TEXAS P. E. 14118471
398 E. DANIA BEACH BLVD. #338
DANIA BEACH, FL 33004

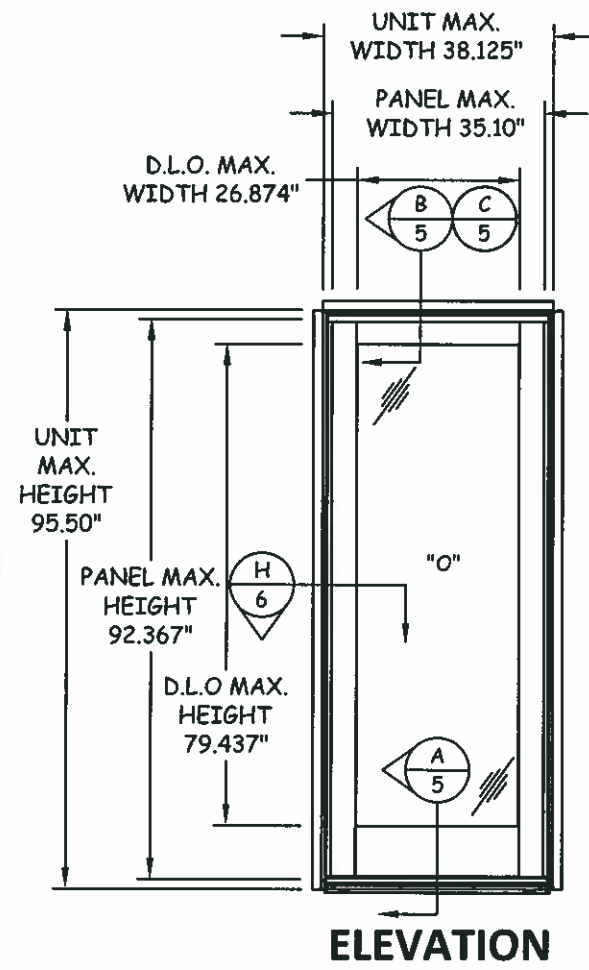
DATE: 8.03.12
DWN BY: MSS
CHK BY: HN
SCALE: NTS
DWG #: AWD062
SHEET: 1 OF 7

8/4/2015 4:27 PM
s:\projects\andersen\windows\12-0631 (dfi submit) - windows and doors\12-0631 and 062 a series framenwood as in\dwg\awd062.in.dwg

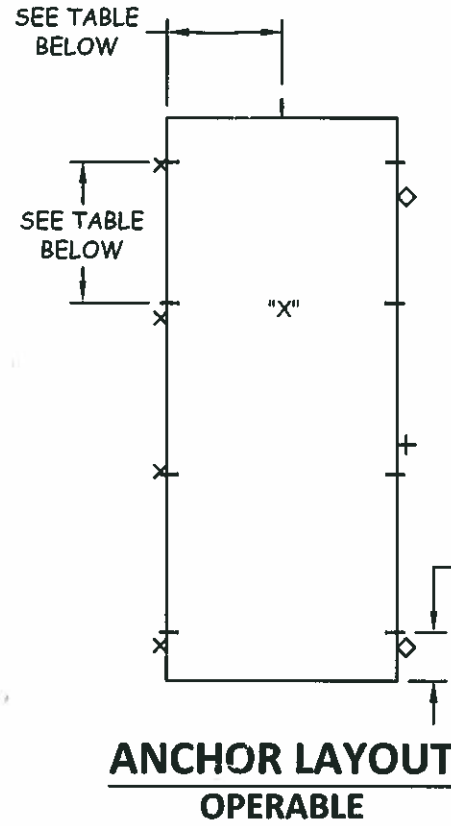
s:\projects\andersen\windows and doors\12-0631 (rd submital - windows and doors)\awd024-awd062 a series (ranchwood of int)\dgs\awd062.dwg
 8/4/2015 4:27 PM



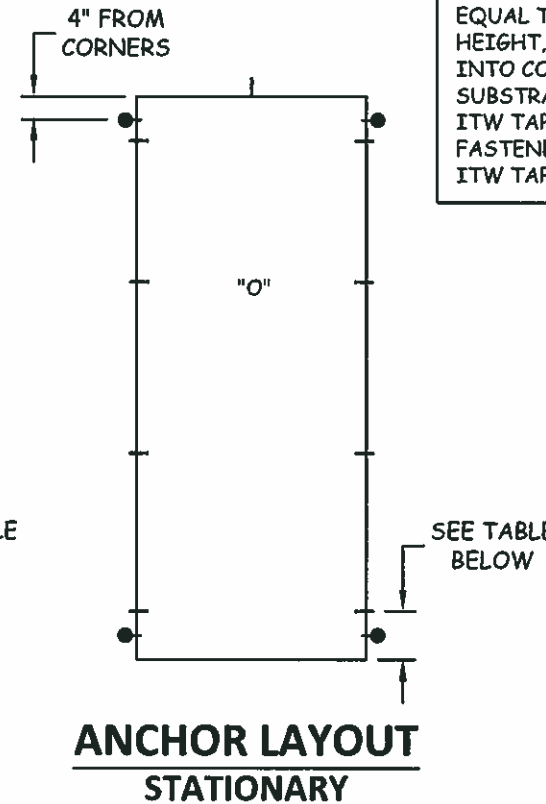
ELEVATION



ELEVATION



ANCHOR LAYOUT OPERABLE



ANCHOR LAYOUT STATIONARY

ACTIVE DOOR LEGEND (X)

X = ONE (1) ANCHOR THRU HINGE PLATE

◇ = ANCHORS THRU END RECEIVER

- WOOD OR METAL: THREE (3)

- CONCRETE/MASONRY: TWO (2)

+ = ANCHORS THRU CENTER RECEIVER

- WOOD OR STEEL: FOUR (4)

- CONCRETE/MASONRY: TWO (2)

STATIONARY DOOR LEGEND (O)

● = ADDITIONAL FIELD DRILLED 3/16" ITW TAPCON ANCHOR FOR DOORS EQUAL TO AND LESS THAN 10' IN HEIGHT, APPLIES TO INSTALLATION INTO CONCRETE/MASONRY SUBSTRATES WHEN UTILIZING 3/16" ITW TAPCONS ONLY. ADDITIONAL FASTENERS NOT REQUIRED WHEN 1/4" ITW TAPCONS ARE UTILIZED.



100 FOURTH AVE NORTH
 BAYPORT, MN 55003-1096
 PH: (651) 264-5150 FX: (651) 264-5485

TITLE: **A-SERIES FWOOD ELEVATION AND ANCHOR LAYOUT**

PREPARED BY: **BUILDING DROPS, INC.**
 398 E. DANIA BEACH BLVD. #338
 DANIA BEACH, FL 33004
 PH: (954) 399-8478 FX: (954) 744-4738

NO.	DESCRIPTION	REVISIONS	
		BY	DATE

[Signature]
 8-Jun-2015
 HERJES F. MORRIS, P.E.
 398 E. DANIA BEACH BLVD. #338
 DANIA BEACH, FL 33004

DATE: 8.03.12
 DWN BY: MSS
 CHK BY: HN
 SCALE: NTS

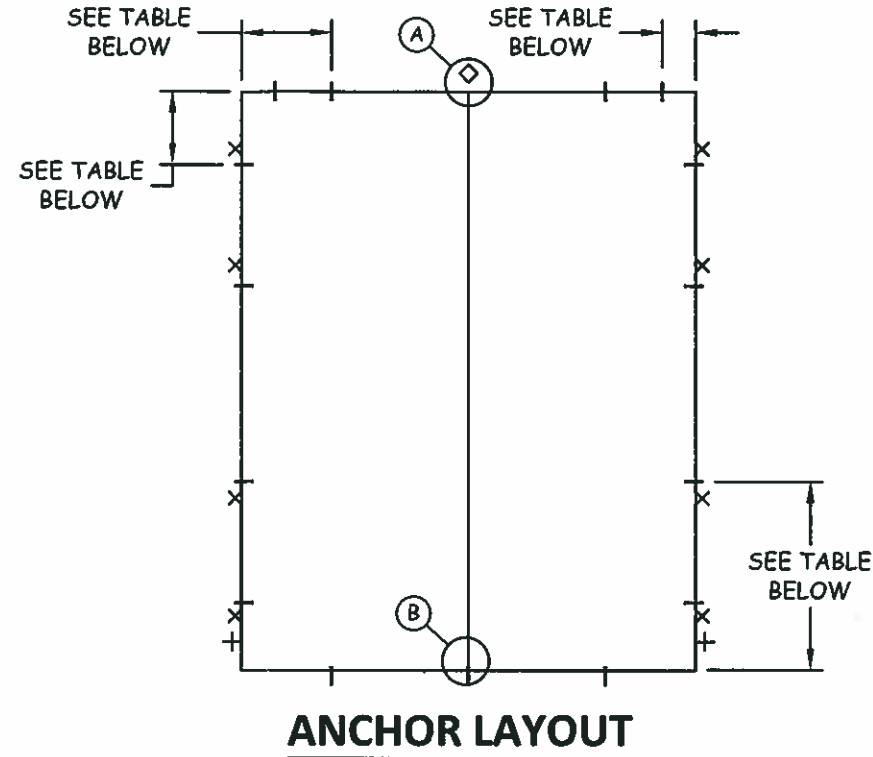
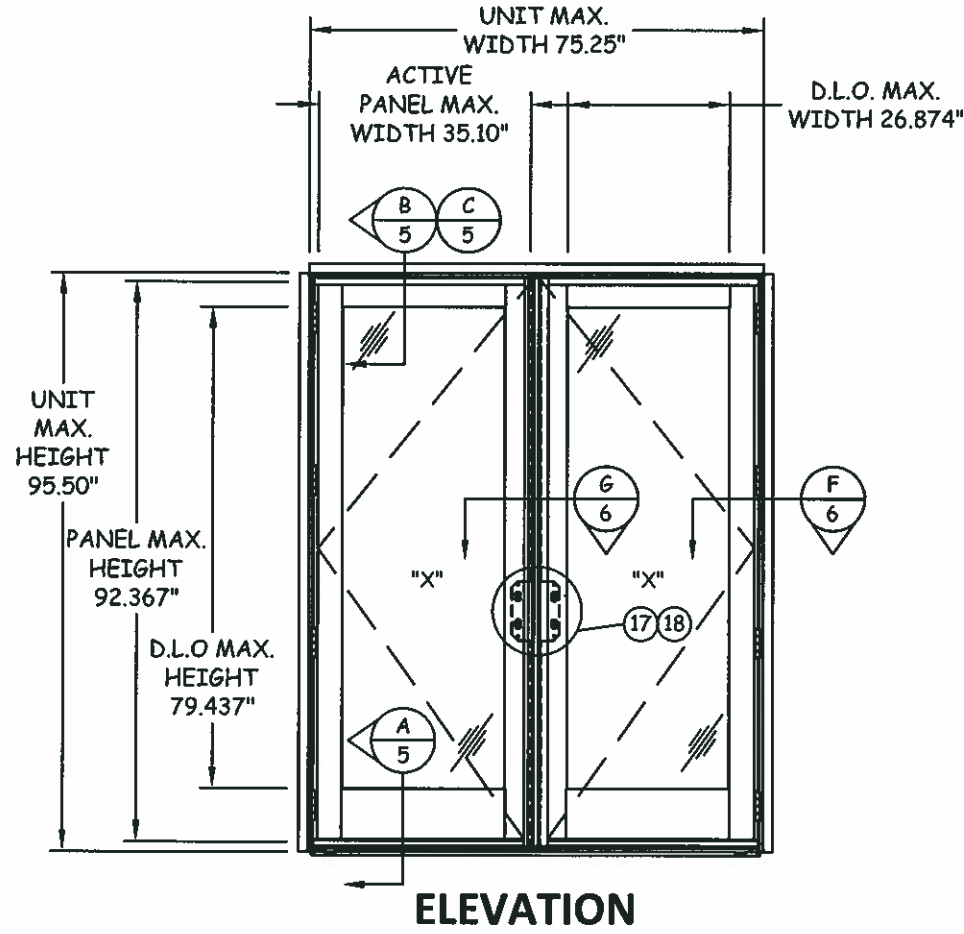
DWG #: **AWD062**
 SHEET: **2 OF 7**

ANCHOR SCHEDULE								
SIZE (IN.)	CONFIGURATION	HEAD			JAMBS			
		MAX. FROM CORNER (IN.)	MAX. O.C. (IN.)	ANCHOR QUANTITY	MAX. FROM CORNER (IN.)	MIN. ANCHOR QUANTITY AT HINGE JAMB	MIN. ANCHOR QUANTITY AT LOCK JAMB	MIN. ANCHOR QUANTITY AT STATIONARY JAMBS
38.125 X 95.50	X or O	19.1	N/A	1	8.0 & 34.0	8	10	4
38.125 X 82.38	X or O	19.1	N/A	1	8.0 & MIDSPAN	6	9	3
38.125 X 79.50	X or O	19.1	N/A	1	8.0 & MIDSPAN	6	9	3

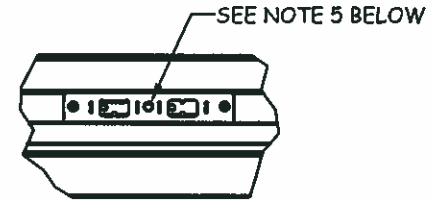
- NOTE:**
- FOR SILL ANCHORAGE SEE LEGEND ABOVE.
 - SEE ANCHOR LEGEND FOR ADDITIONAL ANCHORS THROUGH HEAD RECEIVER, HINGE PLATES, AND ADDITIONAL ANCHOR THROUGH JAMB.
 - ANCHOR SCHEDULE REFLECTS MINIMUM NUMBER OF ANCHORS REQUIRED, TOTAL QUANTITY MAY VARY DEPENDING ON LEGEND REQUIREMENTS.
 - FOR INSTALLATION OF HINGES, ITEM#12
 - USE (2) 10-12 X 1 1/2" FLAT HD SCREWS PER HINGE RECEIVER TO DOOR PANEL.
 - USE (4) 10-12 X 1 1/2" FLAT HD SCREWS AND (1) INSTALL ANCHOR IN ACCORDANCE WITH SHEET 1, INSTALL. NOTES 4-6, PER HINGE THRU DOOR FRAME IN ACCORDANCE WITH LEGEND ABOVE.
 - END RECEIVER & CENTER RECEIVER STRIKE PLATES SHALL BE FASTENED IN ACCORDANCE WITH LEGEND ABOVE. INSTALLATION ANCHORS SHALL BE IN ACCORDANCE WITH SHEET 1, INSTALL. NOTES 4-6 AND LEGEND ABOVE. LEFTOVER HOLES SHALL UTILIZE 10-12 X 1" PH SCREWS TO DOOR FRAME.



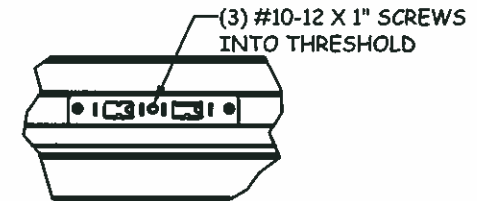
100 FOURTH AVE NORTH
BAYPORT, MN 55003-1096
PH: (651) 264-5150 FX: (651) 264-5485



LEGEND	
X	= ONE (1) ANCHOR THRU HINGE PLATE
◇	= ANCHORS THRU HEAD RECEIVER - WOOD OR METAL: FIVE (5) - CONCRETE/MASONRY: THREE (3)
+	= EXTRA ANCHOR THRU JAMB, 3" FROM BOTTOM CORNER



DETAIL A
HEAD RECEIVER
SEE ANCHOR LEGEND FOR QTY OF ANCHORS REQUIRED



DETAIL B
SILL RECEIVER

ANCHOR SCHEDULE						
SIZE (IN.)	CONFIGURATION	HEAD/SILL			JAMBS	
		MAX. FROM CORNER (IN.)	MAX. O.C. (IN.)	ANCHOR QUANTITY	MAX. FROM CORNER (IN.)	MIN. ANCHOR QUANTITY AT HINGE JAMBS
75.25 X 95.50*	XX	17.75	MIDSPAN	3	8.0 & 34.0	8
75.25 X 82.38*	XX	17.75	MIDSPAN	3	8.0 & MIDSPAN	6
75.25 X 79.50*	XX	17.75	MIDSPAN	3	8.0 & MIDSPAN	6

NOTE:

- FOR SILL ANCHORAGE SEE LEGEND ABOVE.
- SEE ANCHOR LEGEND FOR ADDITIONAL ANCHORS THROUGH HEAD RECEIVER, HINGE PLATES, AND ADDITIONAL ANCHOR THROUGH JAMB.
- ANCHOR SCHEDULE REFLECTS MINIMUM NUMBER OF ANCHORS REQUIRED, TOTAL QUANTITY MAY VARY DEPENDING ON LEGEND REQUIREMENTS.
- FOR INSTALLATION OF HINGES, ITEM#12
 - USE (2) 10-12 X 1 1/2" FLAT HD SCREWS PER HINGE RECEIVER TO DOOR PANEL.
 - USE (4) 10-12 X 1 1/2" FLAT HD SCREWS PER HINGE TO FRAME AND (1) INSTALL. ANCHOR IN ACCORDANCE WITH SHEET 1, INSTALL. NOTES 4-6, PER HINGE THRU DOOR FRAME IN ACCORDANCE WITH LEGEND ABOVE.
- FOR INSTALLATION OF HEAD & SILL RECEIVER, DETAIL A & B ABOVE RESPECTIVELY, SEE LEGEND ABOVE FOR QUANTITY REQUIREMENTS. INSTALLATION ANCHORS SHALL BE IN ACCORDANCE WITH SHEET 1, INSTALL. NOTES 4-6 AND LEGEND ABOVE. LEFTOVER HOLES SHALL UTILIZE 10-12 X 1" PH SCREWS TO DOOR FRAME.
- ASTRAGALS SHALL BE ATTACHED THROUGH EACH MULTI-POINT STRIKE & MULTI-POINT LATCH LOCATIONS (ITEM #16 & #17) WITH (2) 10-12 X 3 1/2" PH SCREWS PER STRIKE OR FACE PLATE.

TITLE: A-SERIES FWOD
ELEVATION AND ANCHOR LAYOUT
PREPARED BY: BUILDING DROPS, INC.
398 E. DANIA BEACH BLVD. #338
DANIA BEACH, FL 33004
PH: (954) 399-8478 FX: (954) 744-4738

NO.	DESCRIPTION	BY	DATE

Handwritten signature and date: 8-6-2015
WYNES F. MORENO, P.E.
12245 P. E. RD. 110471
398 E. DANIA BEACH, FL 33004

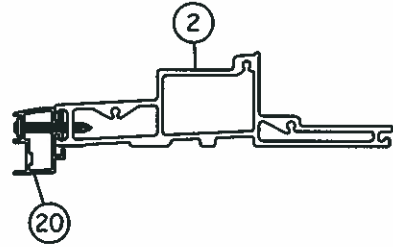
DATE: 8.03.12
DWN BY: MSS
CHK BY: HN
SCALE: NTS

DWG #: **AWD062**
SHEET: **3 OF 7**

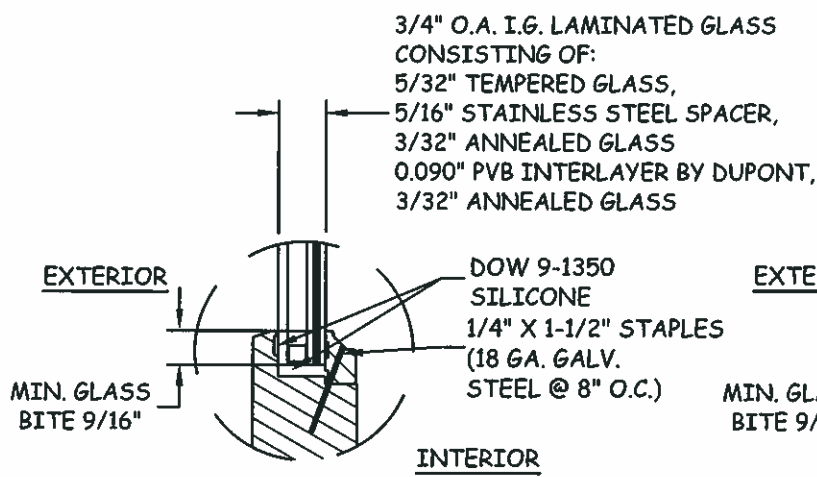
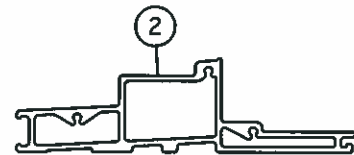


100 FOURTH AVE NORTH
BAYPORT, MN 55003-1096
PH: (651) 264-5150 FX: (651) 264-5485

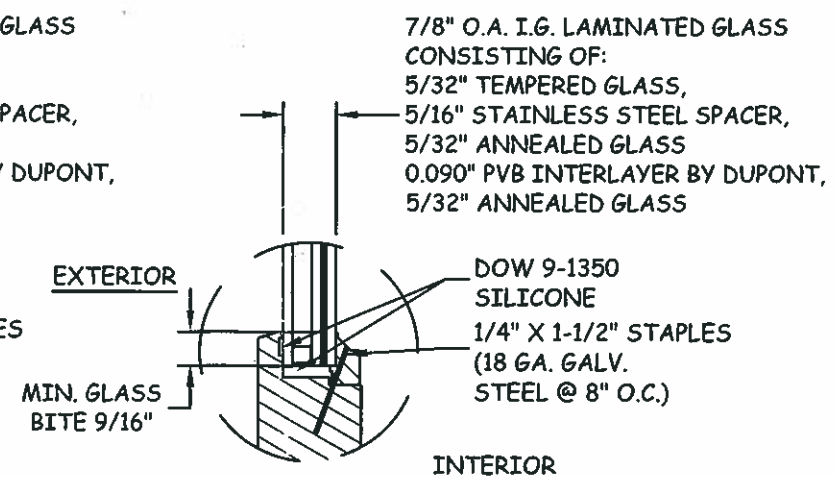
A-SERIES OUTSWING DOOR UNITS WITH DROP-NOSE SILL (ITEM 20)						
CONFIGURATION	HEIGHT (IN.)	WIDTH (IN.)	DESIGN PRESSURE (PSF)			
			G1		G2	
			POS.	NEG.	POS.	NEG.
XX	79.50	75.25	65.0	80.0	-	-
XX	82.38	75.25	65.0	80.0	-	-
XX	95.50	75.25	-	-	65.0	70.0
X or O	79.50	38.125	65.0	80.0	-	-
X or O	82.38	38.125	65.0	80.0	-	-
X	95.50	38.125	-	-	65.0	70.0
O	95.50	38.125	-	-	65.0	80.0



A-SERIES OUTSWING DOOR UNITS WITHOUT DROP-NOSE SILL (ITEM 20)						
CONFIGURATION	HEIGHT (IN.)	WIDTH (IN.)	DESIGN PRESSURE (PSF)			
			G1		G2	
			POS.	NEG.	POS.	NEG.
XX	79.50	75.25	45.0	80.0	-	-
XX	82.38	75.25	45.0	80.0	-	-
XX	95.50	75.25	-	-	45.0	70.0
X or O	79.50	38.125	45.0	80.0	-	-
X or O	82.38	38.125	45.0	80.0	-	-
X	95.50	38.125	-	-	45.0	70.0
O	95.50	38.125	-	-	45.0	80.0



GLAZING DETAIL 1



GLAZING DETAIL 2

ALL GLAZING MEETS SAFETY GLAZING REQUIREMENTS AS PER SECT 2406 OF THE IBC

TITLE: A-SERIES FWOOD
PRESSURE TABLES AND
GLAZING DETAILS
PREPARED BY:
BUILDING DROPS, INC.
398 E. DANIA BEACH BLVD. #338
DANIA BEACH, FL 33004
PH: (954) 399-8478 FX: (954) 744-4738

REVISIONS		
NO.	DESCRIPTION	DATE
A	UPDATE GLAZING DETAILS	4.30.14

8-6-2015
MERRIS F. NORRIS, P.E.
TECHNICAL P.E. NO. 10471
398 E. DANIA BEACH BLVD. #338
DANIA BEACH, FL 33004

DATE: 8.03.12
DWN BY: MSS
CHK BY: HN
SCALE: NTS

DWG #: **AWD062**
SHEET: 4 OF 7

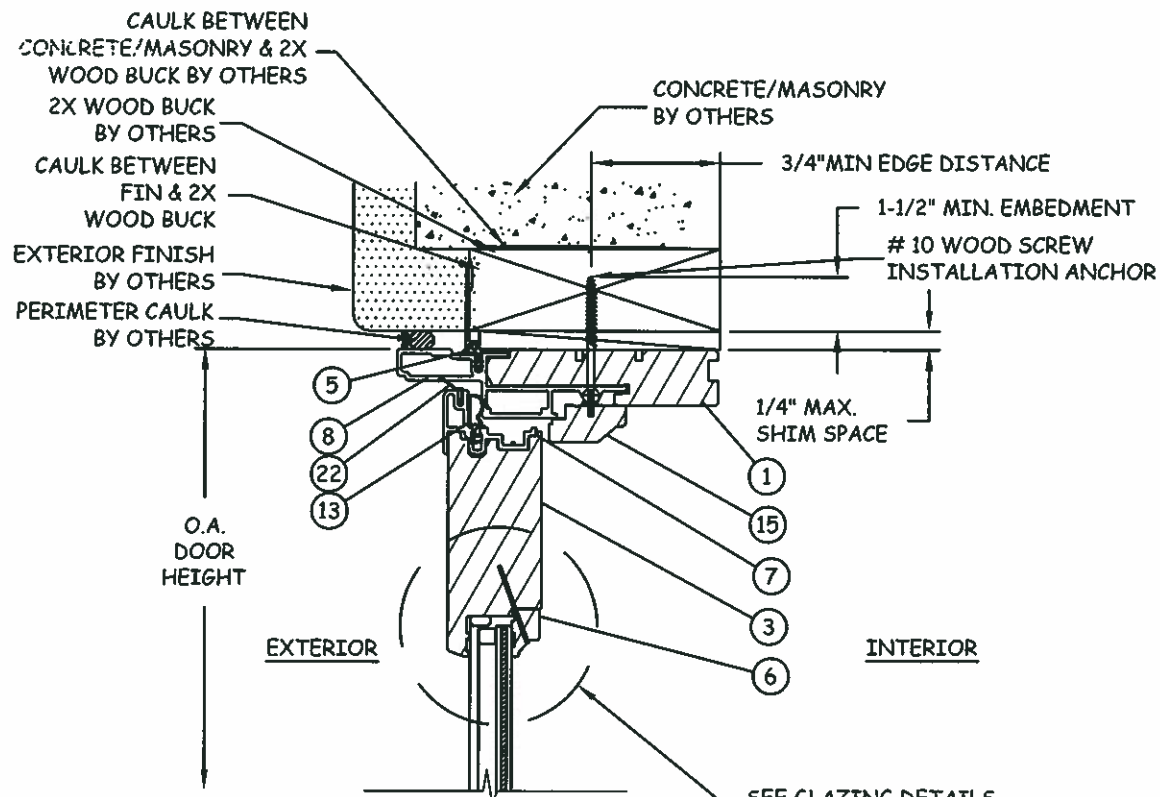
8/4/2015 4:27 PM

s:\projects\andersen\windows\tdi-12-0631 (tdi submittal - windows and doors)\awd062 a series frenchwood or lm\awd062 hn.dwg

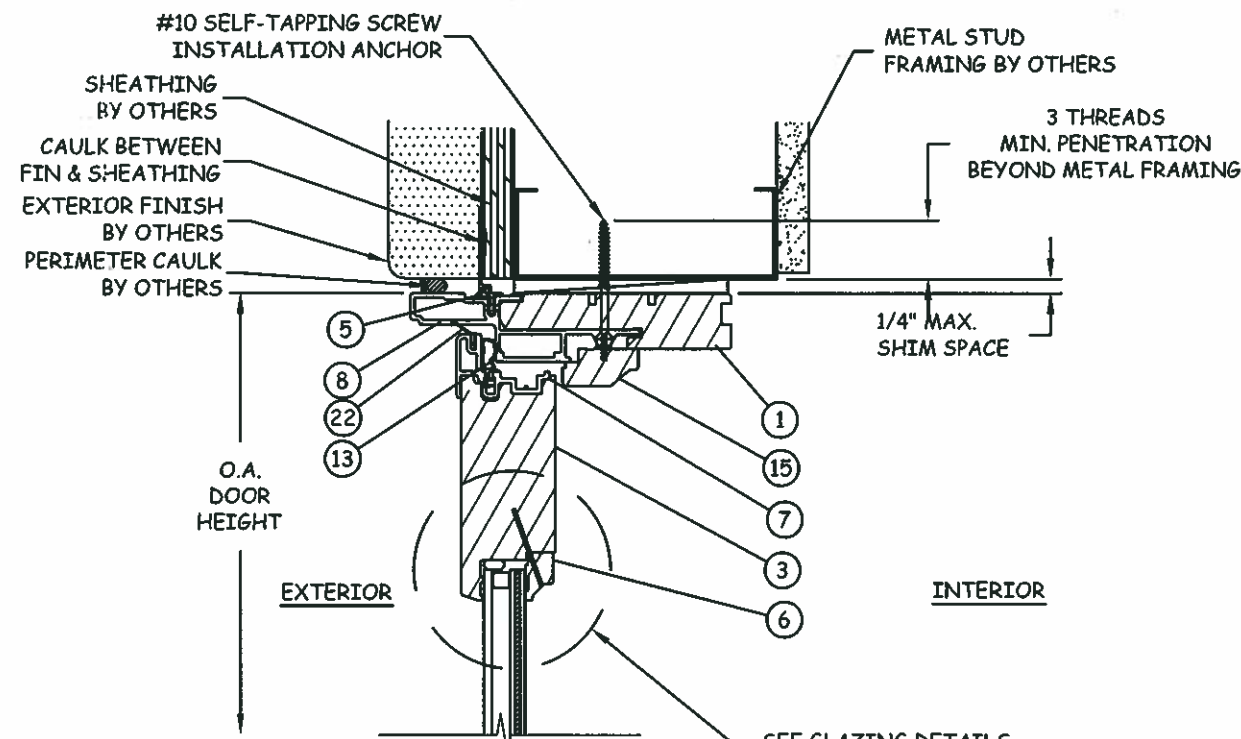


100 FOURTH AVE NORTH
 BAYPORT, MN 55003-1096
 PH: (651) 264-5150 FX: (651) 264-5485

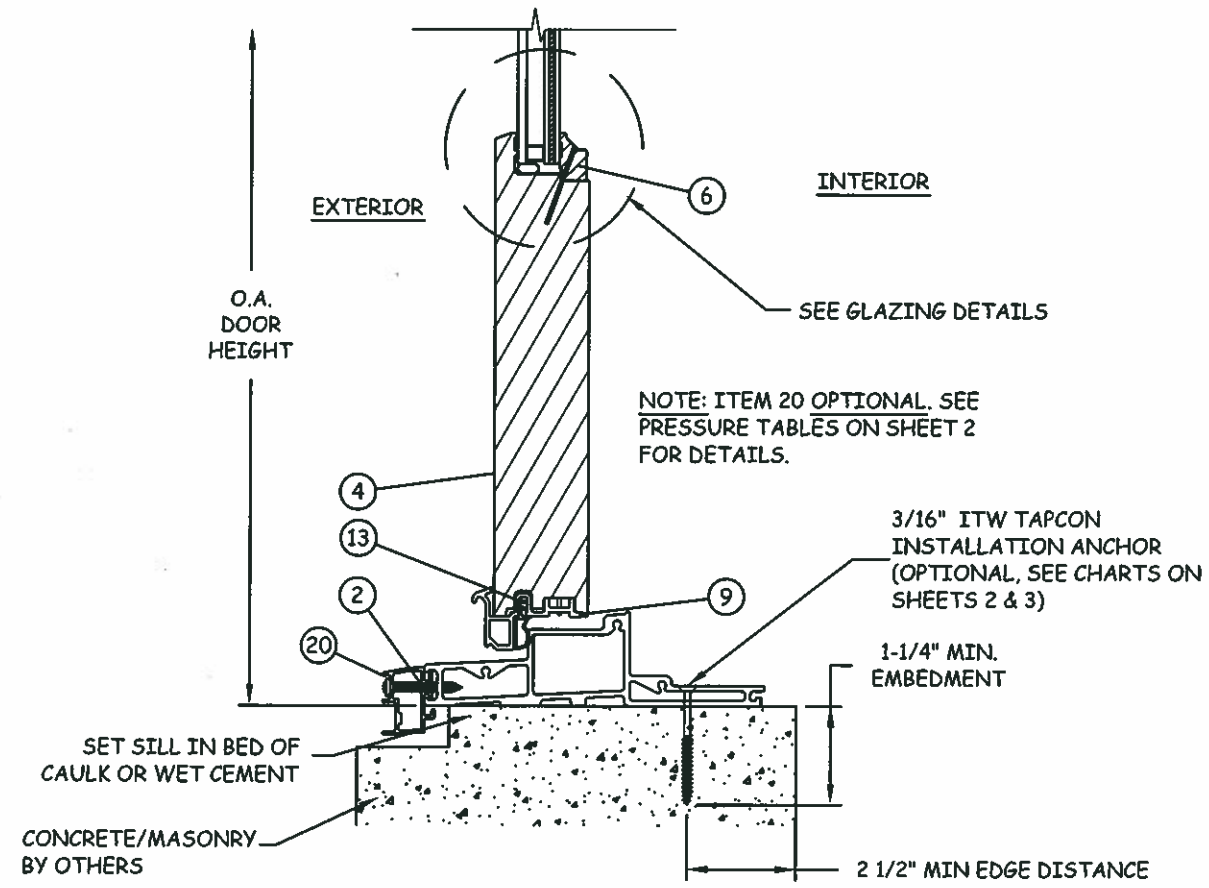
TITLE: A-SERIES FWOOD
 VERTICAL SECTIONS
 PREPARED BY:
 BUILDING DROPS, INC.
 398 E. DANIA BEACH BLVD. #338
 DANIA BEACH, FL 33004
 PH: (954) 399-8478 FX: (954) 744-4738



B
5 VERTICAL SECTION
 HEAD - 2X WOOD FRAME



C
5 VERTICAL SECTION
 HEAD - STEEL STUD FRAME



A
5 VERTICAL SECTION
 SILL - CONCRETE

REVISIONS		NO.	DESCRIPTION	BY	DATE

[Signature]
 8-6-2015
 HOMES F. MYERS, P.E.
 398 E. DANIA BEACH BLVD. #338
 DANIA BEACH, FL 33004

DATE: 8.03.12
 DWN BY: MSS
 CHK BY: HN
 SCALE: NTS

DWG #: **AWD062**
 SHEET: **5 OF 7**

8/4/2015 4:27 PM

s:\projects\andersen\windows\12-0631 (rdl submital - windows and doors)\awd062-awd062 a series framewood as lin\awd062 hn.dwg



100 FOURTH AVE NORTH
BAYPORT, MN 55003-1096
PH: (651) 264-5150 FX: (651) 264-5485

TITLE: A-SERIES FWOOD
HORIZONTAL SECTIONS

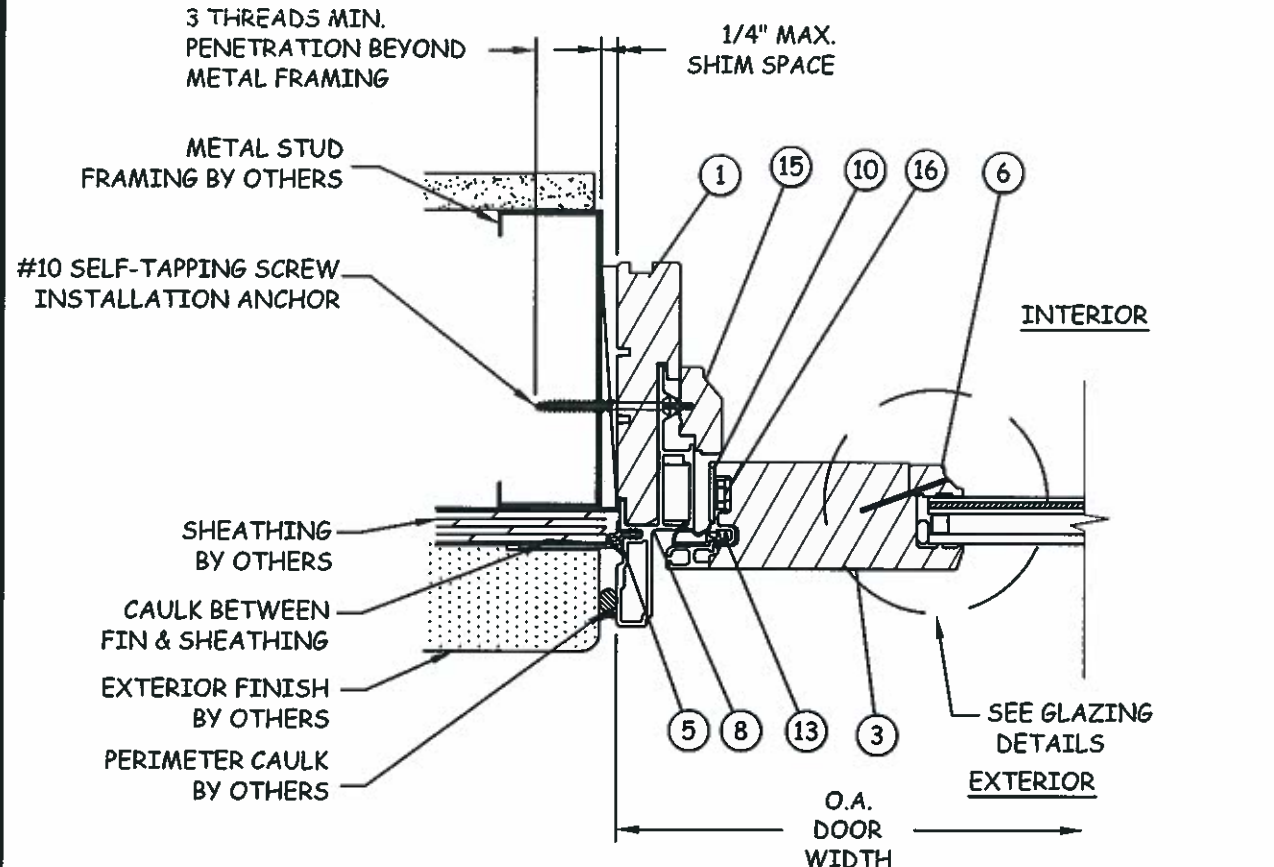
PREPARED BY:
BUILDING DROPS, INC.
398 E. DANIA BEACH BLVD. #338
DANIA BEACH, FL 33004
PH: (954) 399-8478 FX: (954) 744-4738

NO.	DESCRIPTION	BY	DATE

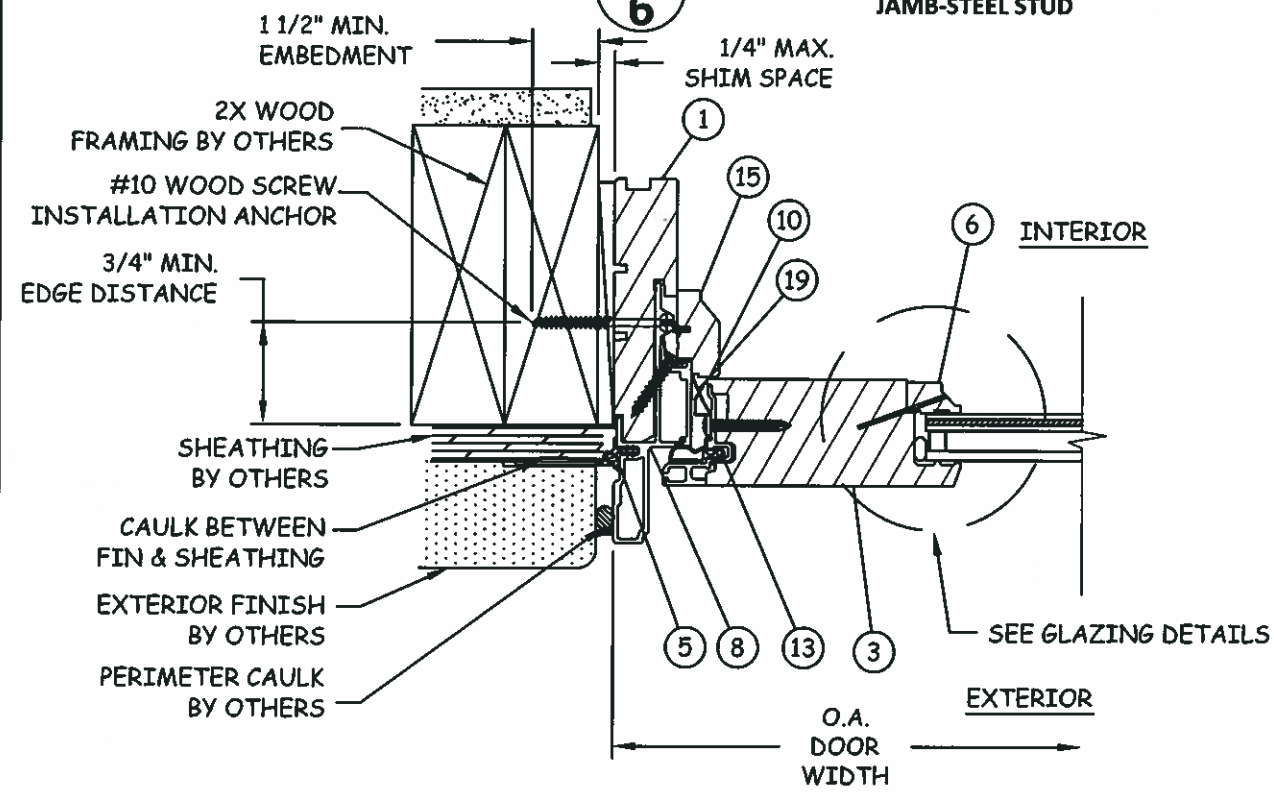
8-6-2015
PERMES F. MORENO, P.E.
TEXAS P. E. NO. 118471
398 E. DANIA BEACH BLVD. #338
DANIA BEACH, FL 33004

DATE: 8.03.12
DWN BY: MSS
CHK BY: HN
SCALE: NTS

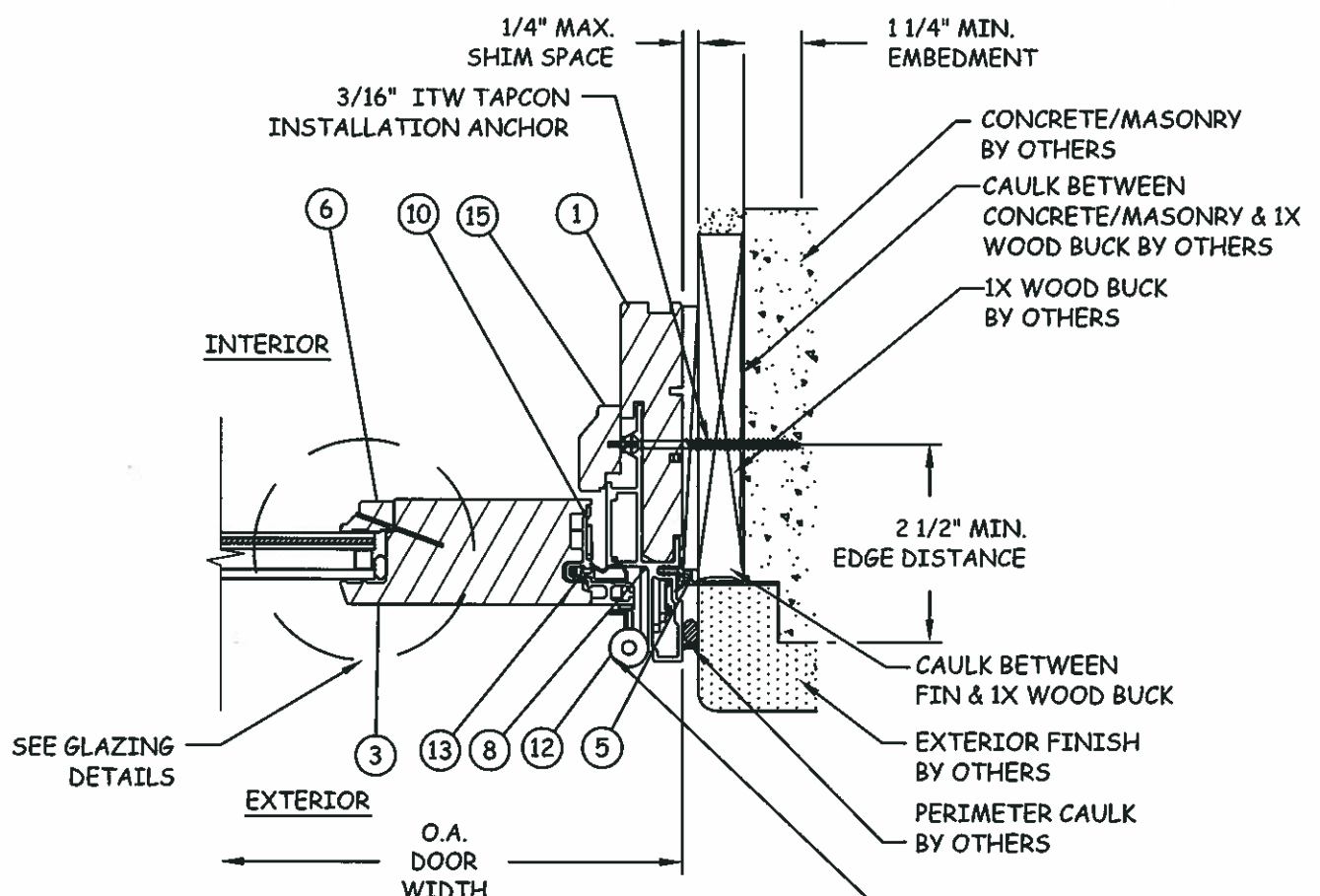
DWG #: AWD062
SHEET: 6 OF 7



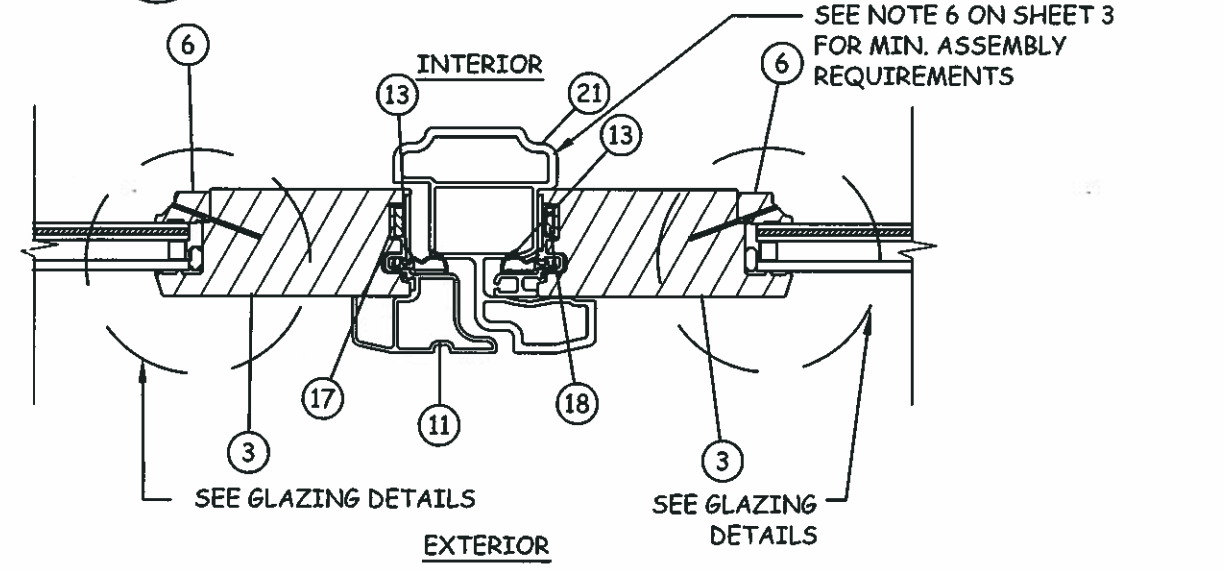
E
6 HORIZONTAL SECTION
JAMB-STEEL STUD



H
6 HORIZONTAL SECTION
STATIONARY JAMB-2X WOOD FRAME



F
6 HORIZONTAL SECTION
JAMB-1X WOOD FRAME

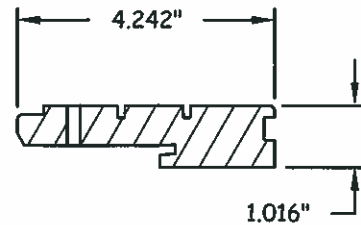


G
6 HORIZONTAL SECTION
ASTRAGAL

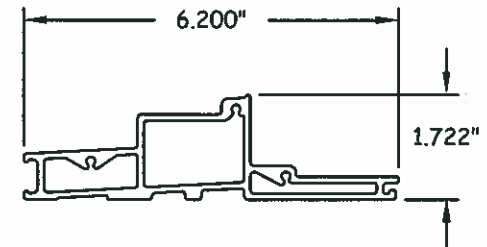
s:\projects\andersen\windows\12-0631 (rd\submital - windows and doors)\awd024-awd062 a series frenchwood as im\dwg\awd062.hrdwg
 8/1/2015 4:27 PM

BILL OF MATERIALS				
NO.	PART NUMBER	DESCRIPTION	MATERIAL	MANUFACTURER
1		FRAME HEAD/SIDE JAMB	WOOD	ANDERSEN
2		FRAME SILL	FIBERGLASS	ANDERSEN
3		PANEL TOP RAIL & STILE	WOOD	ANDERSEN
4		PANEL BOTTOM RAIL	WOOD	ANDERSEN
5		FLANGE	PVC	ANDERSEN
6		PANEL GLAZING STOP	WOOD	ANDERSEN
7		PANEL TOP RAIL FILLER	FIBERGLASS	ANDERSEN
8		HEAD/SIDE FRAME CLADDING	FIBERGLASS	ANDERSEN
9		BOTTOM RAIL FILLER	FIBERGLASS	ANDERSEN
10		PANEL STILE FILLER	FIBERGLASS	ANDERSEN
11		ASTRAGAL (ACTIVE)	FIBERGLASS	ANDERSEN
12		HINGE	STEEL	ANDERSEN
13		WEATHERSTRIPPING	SANTOPRENE	ANDERSEN
14		HANDLE	-	ANDERSEN
15		PANEL STOP	WOOD	ANDERSEN
16		3 PT. LOCK SYSTEM	STEEL	ANDERSEN
17		5 PT. LOCK SYSTEM	STEEL	ANDERSEN
18		PASSIVE LOCK SYSTEM	STEEL	ANDERSEN
19		STATIONARY PANEL CLIP	STEEL	ANDERSEN
20		DROP CHANNEL	ALUMINUM 6063-T5	ANDERSEN
21		ASTRAGAL (PASSIVE)	FIBERGLASS	ANDERSEN
22		WEATHERSTRIPPING (HEAD)	PVC	ANDERSEN

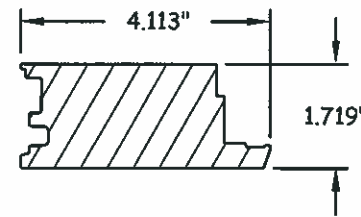
1 FRAME HEAD/SIDE JAMB WOOD



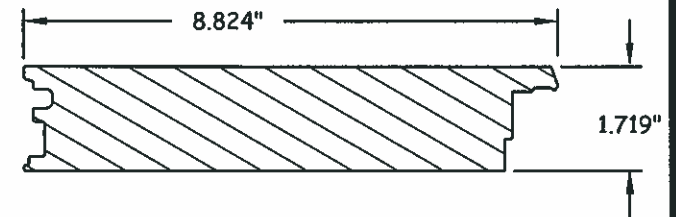
2 FRAME SILL FIBERGLASS TYP. WALL THICKNESS 0.090"



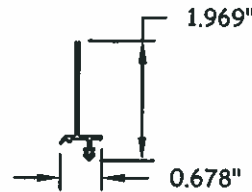
3 PANEL TOP RAIL & STILE WOOD



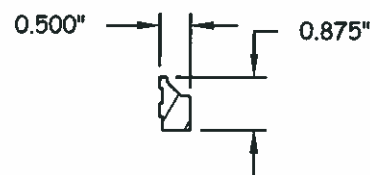
4 PANEL BOTTOM RAIL WOOD



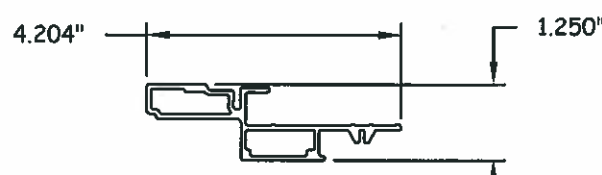
5 FLANGE PVC TYP. WALL THICKNESS 0.05"



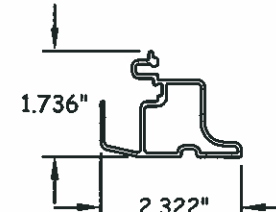
6 PANEL GLAZING STOP WOOD



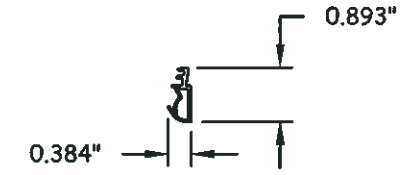
8 HEAD/SIDE FRAME CLADDING FIBERGLASS TYP. WALL THICKNESS 0.082"



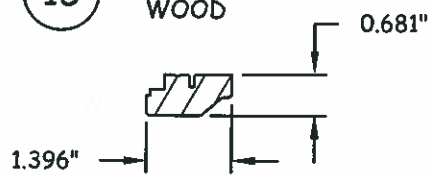
11 ASTRAGAL (ACTIVE) FIBERGLASS



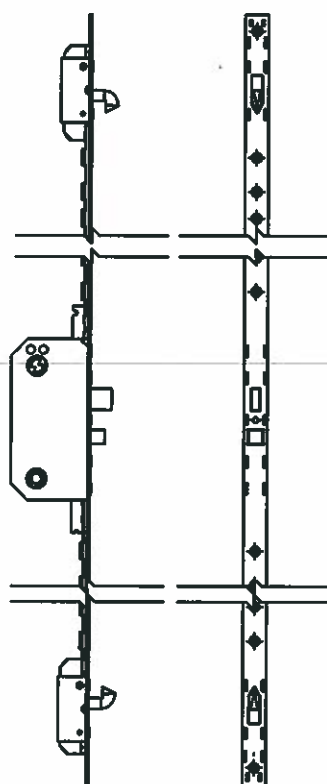
13 WEATHERSTRIPPING SANTOPRENE (DUROMETER: 70) TYP. WALL THICKNESS 0.047"



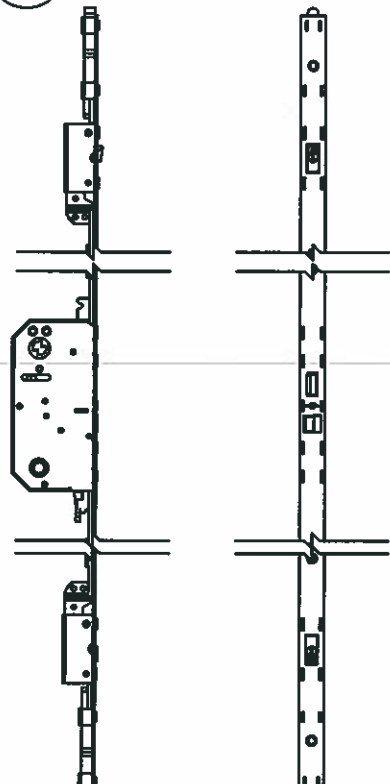
15 PANEL STOP WOOD



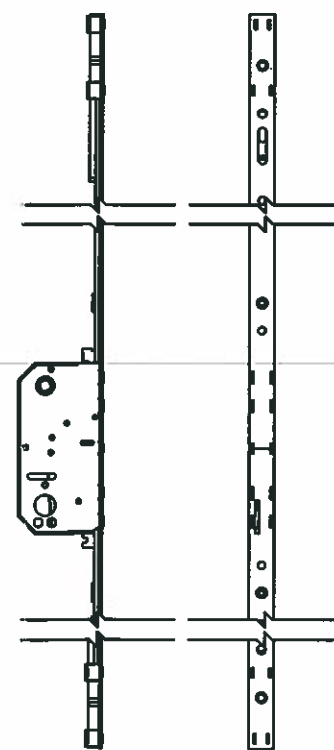
16 ACTIVE SINGLE DOOR 3 PT. LOCK SYSTEM STEEL



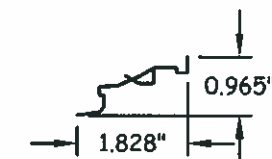
17 ACTIVE DOUBLE DOOR 5 PT. LOCK SYSTEM STEEL



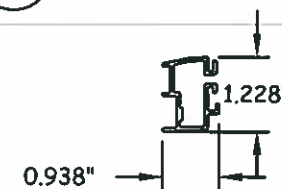
18 PASSIVE DOUBLE DOOR PASSIVE LOCK SYSTEM STEEL



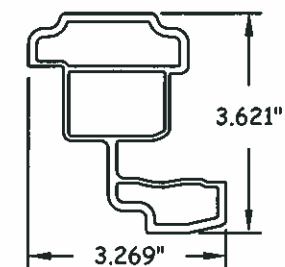
19 STATIONARY PANEL CLIP STEEL TYP. WALL THICKNESS 0.015"



20 DROP CHANNEL ALUMINUM 6063-T5



21 ASTRAGAL (PASSIVE) FIBERGLASS



100 FOURTH AVE NORTH
BAYPORT, MN 55003-1096
PH: (651) 264-5150 FX: (651) 264-5485

TITLE: A-SERIES FWOOD COMPONENTS & BILL OF MATERIALS
PREPARED BY: BUILDING DROPS, INC.
398 E. DANIA BEACH BLVD. #338
DANIA BEACH, FL 33004
PH: (954) 399-8478 FX: (954) 744-4738

NO.	REVISIONS DESCRIPTION	DATE	BY

HERNANDEZ, P.E.
THOMAS P. ELIASH
398 E. DANIA BEACH BLVD. #338
DANIA BEACH, FL 33004
8-6-2015

DATE: 8.03.12
DWN BY: MSS
CHK BY: HN
SCALE: NTS
DWG #: AWD062
SHEET: 7 OF 7

s:\projects\andersen\windows\td-12-0631\td-submittal - windows and doors\awd02-awd02 a series framewood or im\dwg\awd062.in.dwg 8/4/2015 4:27 PM