

**GENERAL NOTES: SERIES 5455 NON-IMPACT-RESISTANT,
VINYL, REINFORCED, OUTSWING
FRENCH DOOR & SIDELITE/TRANSOM**

TDI PRODUCT EVALUATION #738

DESIGN PRESSURE RATING	IMPACT RATING
VARIES, SEE SHEETS 4 & 5	NOT RATED FOR MISSILE IMPACT RESISTANCE

- 1) THIS PRODUCT HAS BEEN DESIGNED & TESTED TO COMPLY WITH THE REQUIREMENTS OF THE 2018 INTERNATIONAL BUILDING CODE (IBC) AND 2018 INTERNATIONAL RESIDENTIAL CODE (IRC).
- 2) SHUTTERS ARE REQUIRED WHEN USED IN WIND-BORNE DEBRIS REGIONS.
- 3) MATERIALS USED FOR ANCHOR EVALUATIONS WERE SOUTHERN PINE, ASTM C90 CONCRETE MASONRY UNITS AND CONCRETE WITH MIN. KSI PER ANCHOR TYPE.
- 4) MASONRY ANCHORS MAY BE USED INTO WOOD AS PER TABLE 1, THIS SHEET. ALL WOOD BUCKS LESS THAN 1-1/2" THICK ARE TO BE CONSIDERED 1X INSTALLATIONS. 1X WOOD BUCKS ARE OPTIONAL IF UNIT IS INSTALLED DIRECTLY TO SUBSTRATE. WOOD BUCKS DEPICTED AS 2X ARE 1-1/2" THICK OR GREATER. 1X AND 2X BUCKS (WHEN USED) SHALL BE DESIGNED TO PROPERLY TRANSFER LOADS TO THE STRUCTURE. WOOD BUCK DESIGN AND INSTALLATION IS THE RESPONSIBILITY OF THE ENGINEER OR ARCHITECT OF RECORD.
- 5) IF SILL IS TIGHT TO SUBSTRATE, GROUT IS NOT REQUIRED. IF USED, NON-SHRINK, NON-METALLIC GROUT, 3400 PSI MIN., (DONE BY OTHERS) (MAX. 1/4" SHIM SPACE FOR GROUT) MUST FULLY SUPPORT THE ENTIRE LENGTH OF THE SILL THAT IS NOT TIGHT TO THE SUBSTRATE, AND TRANSFER SHEAR LOAD TO SUBSTRATE. IF SUBSTRATE IS WOOD, 30# FELT PAPER OR MASTIC IS REQUIRED BETWEEN THE GROUT AND WOOD SUBSTRATE, OR AS APPROVED BY THE AUTHORITY HAVING JURISDICTION, COMPLYING WITH THE IRC/IBC.
- 6) ANCHOR EMBEDMENT TO BASE MATERIAL SHALL BE BEYOND WALL DRESSING OR STUCCO. USE ANCHORS OF SUFFICIENT LENGTH TO ACHIEVE THE EMBEDMENT SHOWN ON TABLE 1, THIS SHEET. NARROW JOINT SEALANT IS USED ON ALL FOUR CORNERS OF THE FRAME. EXTERIOR INSTALLATION ANCHORS SHOULD BE SEALED. OVERALL SEALING/FLASHING STRATEGY FOR WATER RESISTANCE OF INSTALLATION SHALL BE DONE BY OTHERS AND IS BEYOND THE SCOPE OF THESE INSTRUCTIONS.
- 7) SHIMS ARE REQUIRED AT EACH ANCHOR LOCATION WHERE THE PRODUCT IS NOT FLUSH TO THE SUBSTRATE. USE SHIMS CAPABLE OF TRANSFERRING APPLIED LOADS. WOOD BUCKS, BY OTHERS, MUST BE SUFFICIENTLY ANCHORED TO RESIST LOADS IMPOSED ON THEM BY THE DOOR, SIDELITE OR TRANSOM.
- 8) DESIGN PRESSURES:
A. NEGATIVE DESIGN LOADS BASED ON STRUCTURAL TEST PRESSURE AND GLASS PER ASTM E1300.
B. POSITIVE DESIGN LOADS BASED ON WATER TEST PRESSURE, STRUCTURAL TEST PRESSURE, AND GLASS PER ASTM E1300.
- 8) THE ANCHORAGE METHODS SHOWN HAVE BEEN DESIGNED TO RESIST THE WINDLOADS CORRESPONDING TO THE REQUIRED DESIGN PRESSURE. THE 33-1/3% STRESS INCREASE HAS NOT BEEN USED IN THE DESIGN OF THIS PRODUCT. THE 1.6 LOAD DURATION FACTOR WAS USED FOR THE EVALUATION OF ANCHORS INTO WOOD. ANCHORS THAT COME INTO CONTACT WITH OTHER DISSIMILAR MATERIALS SHALL BE COATED OR CORROSION RESISTANT AS SPECIFIED IN THE IRC/IBC.
- 9) ALL RIGID AND CELLULAR PVC MANUFACTURED BY ENERGI FENESTRATION SOLUTIONS USA, INC. OR VISION EXTRUSION, LTD. HAS BEEN TESTED TO COMPLY WITH THE FLORIDA BUILDING CODE FOR PLASTICS.
- 10) SIZES MUST BE VERIFIED FOR COMPLIANCE WITH EGRESS REQUIREMENTS PER IRC/IBC.
- 11) REFERENCES: TEST REPORTS FTL-7401, 7416, 7417 & 7418.
- 12) SERIES FD-5455 WAS FORMERLY KNOWN AS FD-455.

TABLE 1:

Group	Anchor	Substrate	Min. Edge Distance	Min. Embedment	
A	3/16" Ultracon	Concrete (min. 2.85 ksi)	1"	1-3/8"	
		UngROUTED CMU, (ASTM C-90)	1"	1-1/4"	
	3/16" Ultracon+	Concrete (min. 3 ksi)	1-1/8"	1-3/4"	
		UngROUTED CMU, (ASTM C-90)	1"	1-1/4"	
B	#10 Steel SMS (G5) #10 410 S.S. SMS #10 18-8 S.S. SMS	P.T. Southern Pine (SG=0.55)	1/2"	1-3/8"	
		Aluminum, 6063-T5*	5/16"	0.063"	
		Steel, A36*	5/16"	0.063"	
		Steel Stud, A653 Gr. 33*	5/16"	0.063"	
	3/16" Ultracon	P.T. Southern Pine (SG=0.55)	1/2"	1-3/8"	
		Grouted CMU, (ASTM C-90)	2-1/2"	2-1/4"	
		Concrete (min. 2.85 ksi)	1"	1-3/8"	
	3/16" Ultracon+	P.T. Southern Pine (SG=0.55)	1/2"	1-3/8"	
		UngROUTED CMU, (ASTM C-90)	2-1/2"	1-1/4"	
		Concrete (min. 3 ksi)	1-1/8"	1-3/4"	
	1/4" Ultracon	UngROUTED CMU, (ASTM C-90)	2-1/2"	1-1/4"	
	1/4" Ultracon+	UngROUTED CMU, (ASTM C-90)	1-1/16"	1-1/4"	
	C	#12 Steel SMS (G5) #12 410 S.S. SMS #12 18-8 S.S. SMS	P.T. Southern Pine (SG=0.55)	9/16"	1-3/8"
			Aluminum, 6063-T5*	3/8"	0.071"
			Steel, A36*	3/8"	0.071"
			Steel Stud, A653 Gr. 33*	3/8"	0.071" (14 Ga)
1/4" Ultracon		P.T. Southern Pine (SG=0.55)	1"	1-3/8"	
		Grouted CMU, (ASTM C-90)	2-1/2"	1-3/4"	
		Concrete (min. 2.85 ksi)	1"	1-3/8"	
1/4" Ultracon+		P.T. Southern Pine (SG=0.55)	1"	1-3/8"	
		Grouted CMU, (ASTM C-90)	1-1/8"	1-3/4"	
		Concrete (min. 3 ksi)	1-1/4"	1-3/8"	
1/4" 410 S.S. CreteFlex		Concrete (min. 3.35 ksi)	1"	1-3/4"	
		UngROUTED CMU, (ASTM C-90)	2-1/2"	1-1/4"	
		1/4" 18-8 S.S. Aggre-Gator	P.T. Southern Pine (SG=0.55)	1"	1-3/8"
			Concrete (min. 3.27 ksi)	1-1/2"	1-3/8"
1/4" 18-8 S.S. Aggre-Gator		UngROUTED CMU, (ASTM C-90)	4"	1-1/4"	
		D	1/4" Ultracon	Concrete (min. 2.85 ksi)	2-1/2"
1/4" Ultracon+	Concrete (min. 3 ksi)		2-1/2"	1-3/8"	
1/4" 410 S.S. CreteFlex	Concrete (min. 3.35 ksi)		2-1/2"	1-3/4"	

- 1) * MIN. OF 3 THREADS BEYOND THE METAL SUBSTRATE.
2) UNGROUTED CMU VALUES MAY BE USED FOR GROUTED CMU APPLICATIONS.
3) ALL ANCHOR HEAD TYPES ARE APPLICABLE.

Product	Size	DP	Certification #
Mullion	96"	+/-70 psf	190-1010
Door	38-3/4" x 96" (X) 76" x 96" (XX)	+/-70 psf	190-1008
Sidelite or Transom	40" x 111" 111" x 40"	+/-70 psf	190-1004, 1005

SEE TABLE 3 FOR GLAZING-SPECIFIC DOOR DESIGN PRESSURES.

TABLE 2:


Type #	Description
1	1/8" Tempered - 5/8" Airspace - 1/8" Tempered
2	3/16" Tempered - 1/2" Airspace - 3/16" Tempered

GUIDE TO SHEETS:

GENERAL NOTES.....	1
ELEVATIONS.....	2
GLAZING DETAILS.....	3
DESIGN PRESSURES.....	4-5
SIDELITE/TRANSOM ANCHORS.....	4-5
INSTALLATION.....	6-8
EXTRUSION PROFILES.....	9
PARTS LIST.....	10
CORNER DETAILS.....	10
HARDWARE DETAILS.....	11

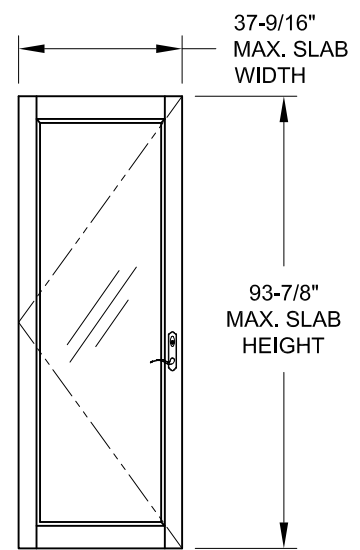
COPYRIGHT © 2021
PGT INDUSTRIES, INC.
LIMITED LICENSE TO MAKE
COPIES FOR PERMITTING.

A) UPDATED TO NEW BUILDING
CODE, ADDED ANCHOR TYPE,
REVISED TABLES 1, 4 & 6 - JR -
01/22/21

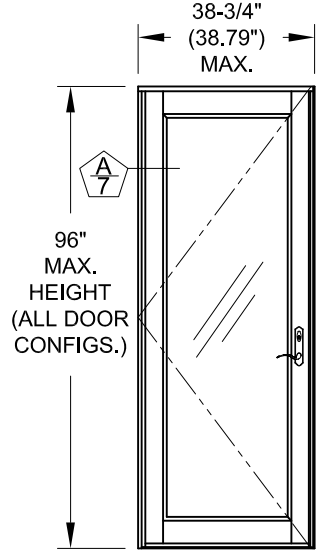
1070 TECHNOLOGY DRIVE N. VENICE, FL 34275 (941)-480-1600	REGISTRATION #29296	Date	5/7/13	J ROSOWSKI	A
		By			
		DWG No.	TDI-5455.1		
		Sheet	1 OF 11		
		VINYL FRENCH DOOR & SDLT/TRAN. (NI)		GENERAL NOTES	
		FD-5455		NTS	
		Scale		Series	

STATE OF TEXAS
ANTHONY LYNN MILLER
106954
LICENSED PROFESSIONAL ENGINEER
A. Lynn Miller 1/25/21
A. LYNN MILLER, P.E.
P.E.# 106954

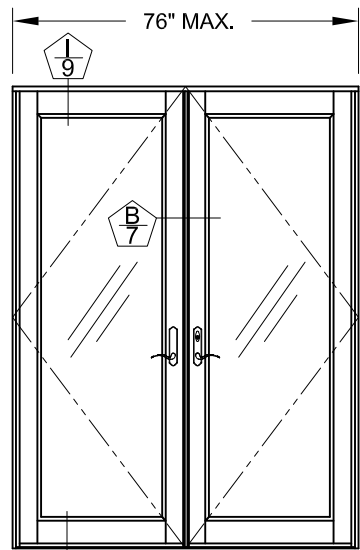
EXAMPLE CONFIGURATIONS



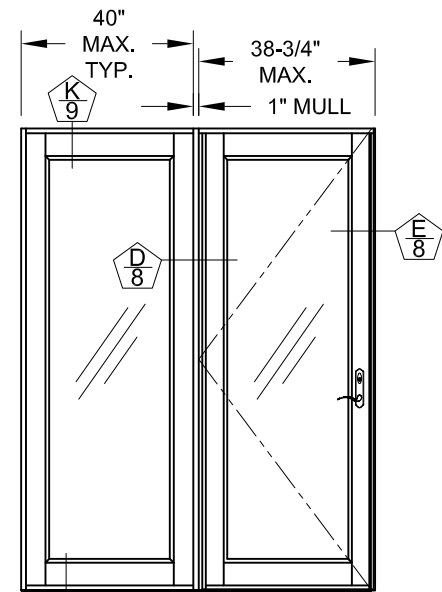
TYP. DOOR SLAB



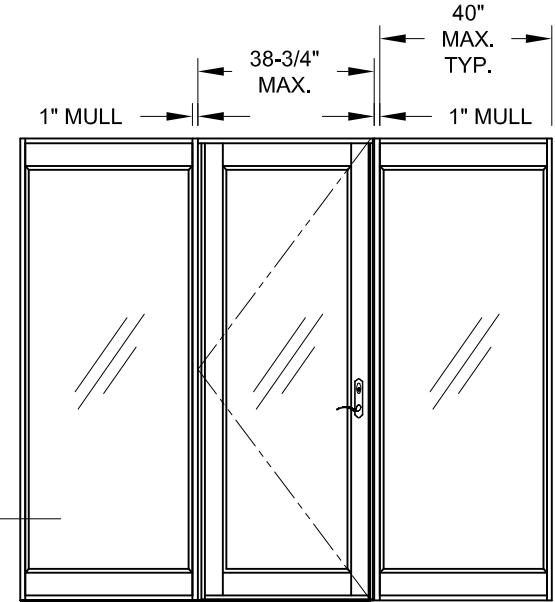
X



XX

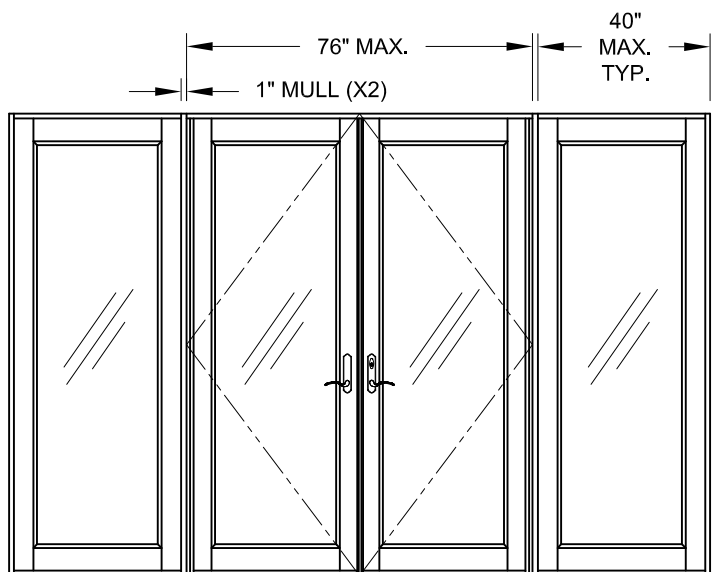


OIX (SHOWN) OR XI O
(WIDE STILES AND WIDE RAILS SHOWN ON SIDELITES)

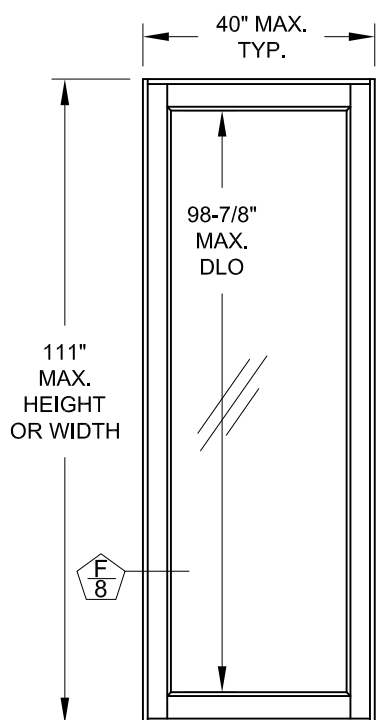


OIXIO
(NARROW STILES AND WIDE RAILS SHOWN ON SIDELITES)

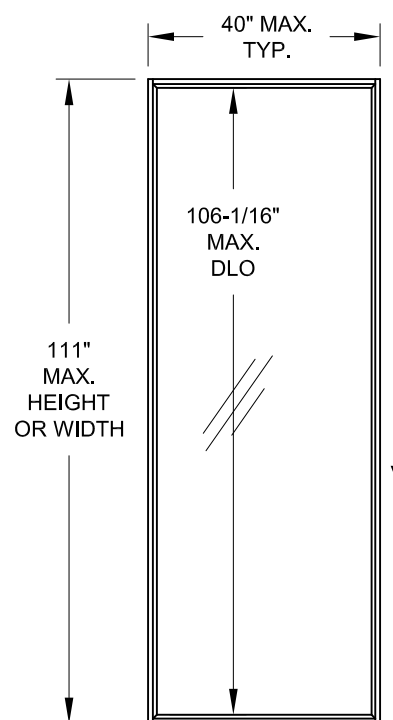
DETAIL SHEET #



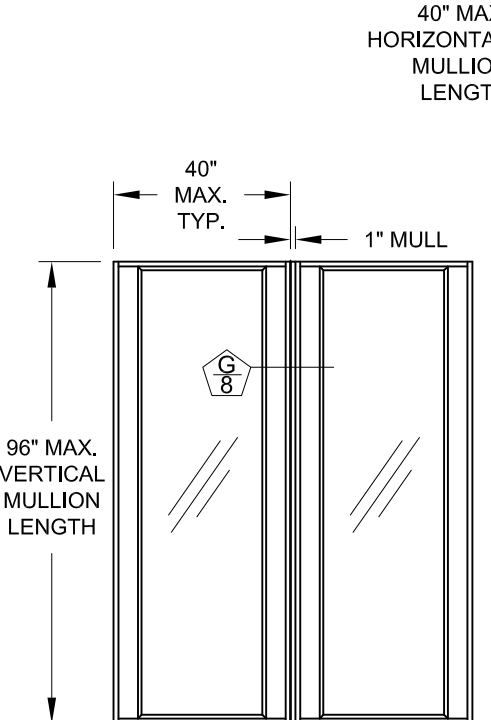
OIXXIO
(WIDE STILES AND WIDE RAILS SHOWN ON SIDELITES)



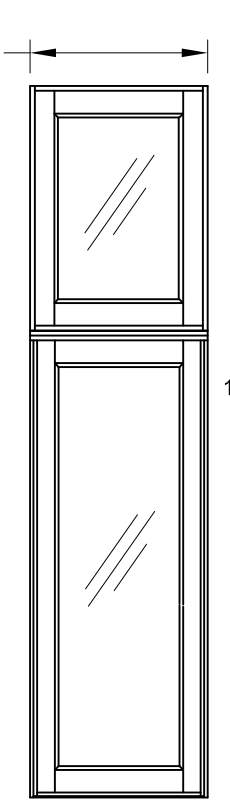
SINGLE O
(WIDE STILES AND WIDE RAILS SHOWN ON SIDELITES)



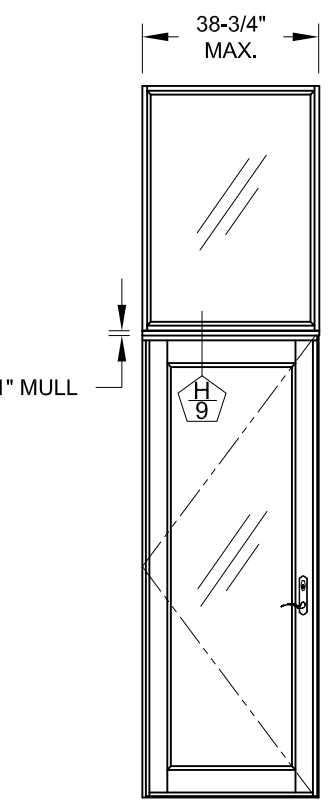
SINGLE O
(NARROW STILES AND NARROW RAILS SHOWN ON SIDELITES)



OJO (ADDITIONAL MULLED LITES ALLOWED)
(WIDE STILES AND NARROW RAILS SHOWN ON SIDELITES)



O/O WITH HORIZONTAL MULLION
(WIDE STILES AND WIDE RAILS SHOWN ON SIDELITE & TRANSOM)



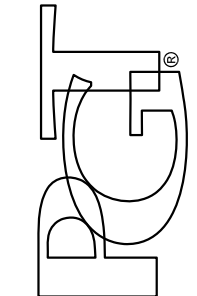
O/X WITH HORIZONTAL MULLION
(NARROW STILES AND NARROW RAILS SHOWN ON TRANSOM)

- NOTES:
- 1) SINGLE DOORS MAY BE LEFT OR RIGHT-HANDED.
 - 2) MULLIONS SHOWN ARE STANDARD 1" FRENCH DOOR MULLIONS PER THIS APPROVAL.
 - 3) MULLED CONFIGURATIONS NOT SHOWN MAY BE POSSIBLE USING OTHER MULLION TYPES, SEE SEPARATE APPROVAL.
 - 4) FRENCH DOOR MULLION IS LIMITED TO 96" IN VERTICAL APPLICATIONS AND 40" IN HORIZONTAL APPLICATIONS.
 - 5) NARROW OR WIDE STILES AND RAILS MAY BE MIXED WITHIN THE SAME SLT/TR OR MULLED ASSEMBLY.
 - 6) ADDITIONAL CONFIGURATIONS USING THE 1" FRENCH DOOR MULLION ARE POSSIBLE. USE THE ABOVE DRAWINGS AS A REFERENCE FOR SIZE LIMITATIONS.

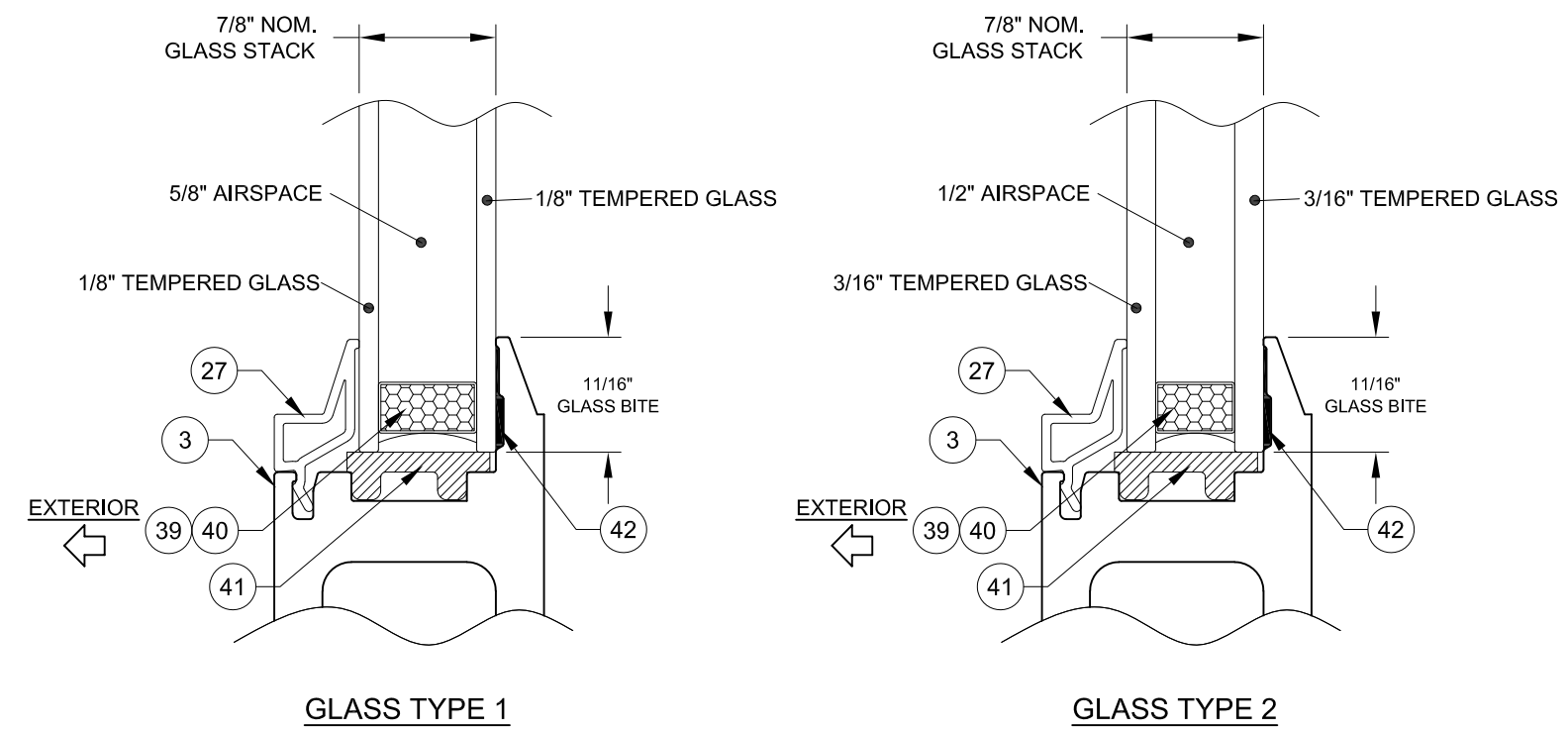
COPYRIGHT © 2021 PGT INDUSTRIES, INC. LIMITED LICENSE TO MAKE COPIES FOR PERMITTING.

Revision A) UPDATED TO NEW BUILDING CODE, ADDED ANCHOR TYPE, REVISED TABLES 1, 4 & 6 - JR - 01/22/21

1070 TECHNOLOGY DRIVE N. VENICE, FL 34275 (941)-480-1600	REGISTRATION #29296	Date	5/7/13	Rev.	A
		By	J ROSOWSKI	DWG No.	TDI-5455.1
		VINYL FRENCH DOOR & SLT/TRAN. (NI)		Sheet	2 OF 11
		EXAMPLE CONFIGURATIONS		Scale	NTS
FD-5455		Series			

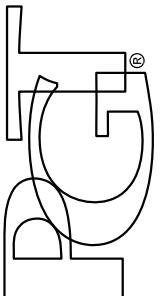


**DOOR, SIDELITE & TRANSOM
GLAZING DETAILS**



COPYRIGHT © 2021
PGT INDUSTRIES, INC.
LIMITED LICENSE TO MAKE
COPIES FOR PERMITTING.

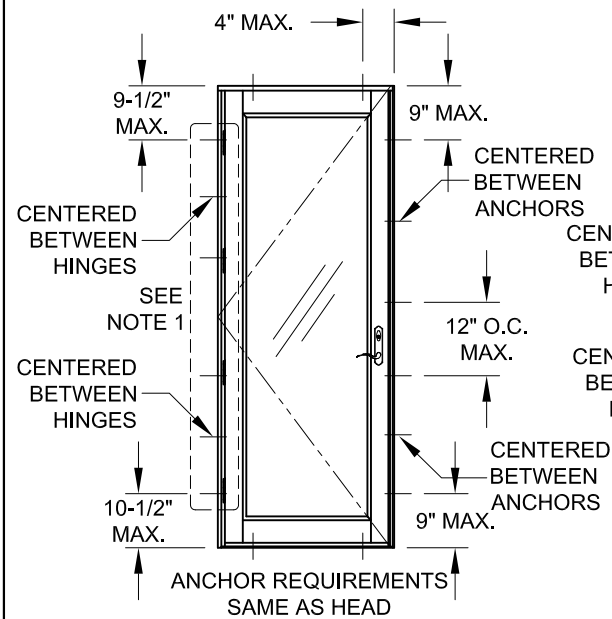
Revision
A) UPDATED TO NEW BUILDING
CODE, ADDED ANCHOR TYPE,
REVISED TABLES 1, 4 & 6 - JR -
01/22/21

1070 TECHNOLOGY DRIVE N. VENICE, FL 34275 (941)-480-1600	REGISTRATION #29296	Date	5/7/13	Rev.	A
		By	J ROSOWSKI	DWG No.	TDI-5455.1
	VINYL FRENCH DOOR & SDLT/TRAN. (NI)	GLAZING DETAILS	Sheet	3 OF 11	Scale
			Series	FD-5455	NTS

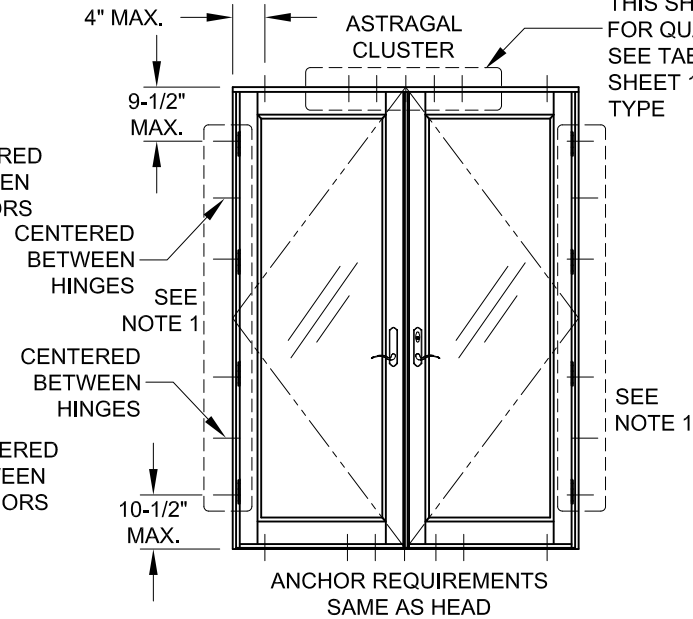


A. Lynn Miller 1/25/21
A. LYNN MILLER, P.E.
P.E.# 106954

**SINGLE DOOR
INSTALLATION
(X)**

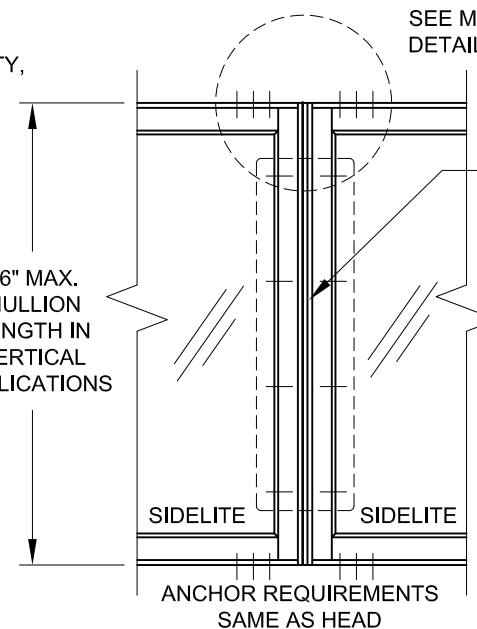


**DOUBLE DOOR
INSTALLATION
(XX)**



**SIDELITE-TO-SIDELITE
MULLION INSTALLATION
(O|O, O|O|O, ETC.)**

4" O.C. MIN.,
SEE TABLE 4,
THIS SHEET,
FOR QUANTITY,
SEE TABLE 1,
SHEET 1 FOR
TYPE

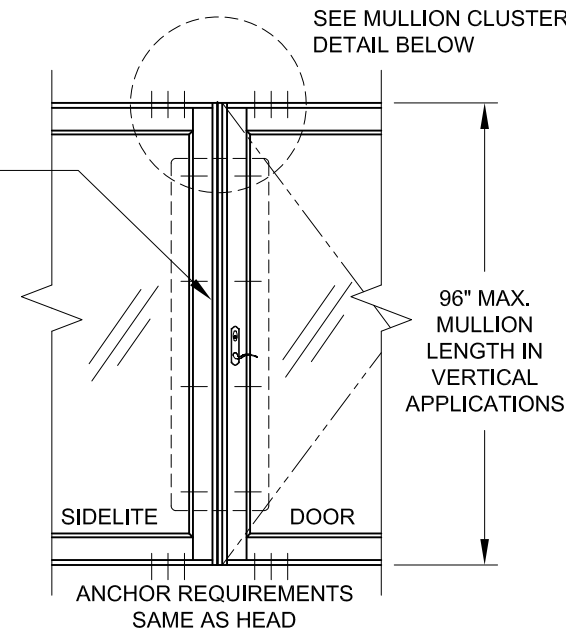


**SIDELITE-TO-DOOR
MULLION INSTALLATION
(X|O, O|X, X|X, O|X|O, X|O|X, O|XX|O, ETC)**

SEE MULLION CLUSTER
DETAIL BELOW

SEE MULLION CLUSTER
DETAIL BELOW

ATTACH DOORS AND
SIDELITES TO THE
MULLION AS PER
THE INSTRUCTION
OF THE INDIVIDUAL
DOOR OR SIDELITE



**TABLE 3:
DOOR DESIGN PRESSURE**

+/-50.0 PSF	Glass Type 1
+/-70.0 PSF	Glass Type 2

**TABLE 4:
XX Door: Astragal Cluster Anchors Required
@ Head & Sill**

Door Height (in)	Door Width (in)							
	48		60		72		76	
	Anchor Group A-D	Anchor Group A&B	Anchor Group C&D	Anchor Group A&B	Anchor Group C&D	Anchor Group A&B	Anchor Group C	Anchor Group D
80	4	4	4	5	4	5	4	4
96	4	5	4	6	4	6	5	4

**TABLE 6:
Anchors Required for a Vertical Mullion (each mullion end)**

Mullion Height (in)	Door or Sidelite/Transom Width (in)											
	12		24		32		38-3/4		40			
	Anchor Group A-D	Anchor Group A-C	Anchor Group D	Anchor Group A&B	Anchor Group C	Anchor Group D	Anchor Group A&B	Anchor Group C	Anchor Group D	Anchor Group A&B	Anchor Group C	Anchor Group D
Door	N/A	2	1	2	2	1	3	2	1	N/A	N/A	N/A
SLT/TR	1	2	1	2	2	1	3	2	1	3	2	1
Door	N/A	2	1	3	2	1	3	3	2	N/A	N/A	N/A
SLT/TR	1	2	1	3	2	1	3	3	2	3	3	2

FOR "O|XX|O"
AND SIMILAR
CONFIGURATIONS
CONTAINING A
DOUBLE DOOR
(XX), USE
ONLY HALF OF
THE FRAME
WIDTH OF THE
DOUBLE DOOR
WHEN USING
THIS TABLE.

INSTRUCTIONS:

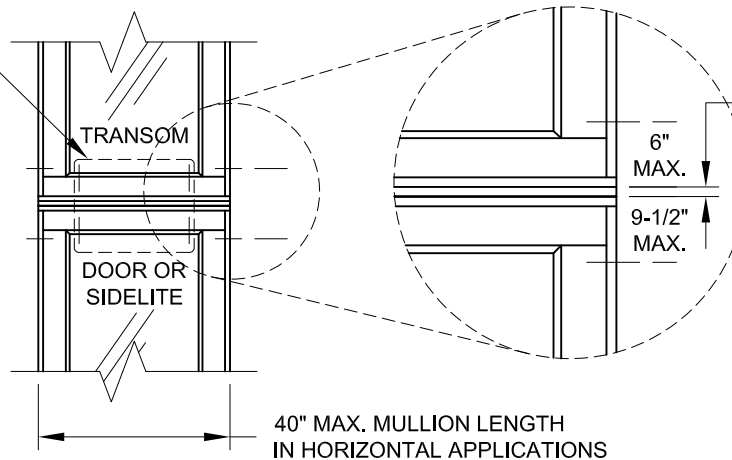
- 1) DOOR HINGE JAMBS OF ALL HEIGHTS TO ALWAYS BE ANCHORED WITH SIX ANCHORS. SEE TABLE 1, SHEET 1, FOR ALL APPROVED ANCHORS. FOUR OF THE SIX ANCHORS MUST BE INSTALLED THROUGH THE HINGES, ONE AT EACH HINGE LOCATION (RECOMMENDED #10 FLATHEAD SMS OR 3/16" FLATHEAD ULTRACON FOR EACH HINGE ANCHOR).
- 2) FOR A MULLED UNIT, DETERMINE THE DESIGN PRESSURE OF EACH COMPONENT IN THAT CONFIGURATION. FOR EXAMPLE, ON AN "X|O" CONFIGURATION, THE DP FOR THE DOOR, THE MULLION AND THE SIDELITE MUST EACH BE DETERMINED. THE LOWEST DP APPLIES TO THE ENTIRE ASSEMBLY.

NOTES:

- 1) SINGLE DOOR MAY BE LEFT OR RIGHT-HANDED.
- 2) MULLIONS SHOWN ARE STANDARD 1" FRENCH DOOR MULLIONS.
- 3) MULLED CONFIGURATIONS NOT SHOWN MAY BE POSSIBLE USING OTHER MULLION TYPES, SEE SEPARATE APPROVAL. THE LOWEST COMPONENT DP IS TO BE THE OVERALL ASSEMBLY DP.
- 4) FRENCH DOOR MULLION IS LIMITED TO 96" IN VERTICAL APPLICATIONS AND 40" IN HORIZONTAL APPLICATIONS.
- 5) NARROW OR WIDE STILES AND RAILS MAY BE MIXED WITHIN THE SAME SIDELITE/TRANSOM OR MULLED ASSEMBLY.
- 6) FOR SIZES NOT SHOWN, ROUND UP TO THE NEXT AVAILABLE SHORT OR LONG DIMENSION.

**TRANSOM-TO-DOOR (X|O) OR TRANSOM-TO-SIDELITE (O|O)
MULLION ATTACHMENT & INSTALLATION**

ATTACH DOORS,
SIDELITES &
TRANSOMS TO THE
MULLION AS PER
THE INSTRUCTION
OF THE INDIVIDUAL
PRODUCT



**TABLE 7:
HORIZONTAL MULLION
DESIGN PRESSURE**

+/-70.0 PSF

COPYRIGHT © 2021
PGT INDUSTRIES, INC.
LIMITED LICENSE TO MAKE
COPIES FOR PERMITTING.

Revision
A) UPDATED TO NEW BUILDING
CODE, ADDED ANCHOR TYPE,
REVISED TABLES 1, 4 & 6 - JR -
01/22/21

1070 TECHNOLOGY DRIVE
N. VENICE, FL 34275
(941)-480-1600

REGISTRATION #29296

5/7/13

J ROSOWSKI

By

Drawn

NO. 4 OF 11

DWG

TDI-5455.1

Rev. A

FD-5455

Scale

NTS

Sheet

DESIGN PRESSURE 1

VINYL FRENCH DOOR & SLT/TRAN. (NI)

REGISTRATION #29296

5/7/13

J ROSOWSKI

By

Drawn

NO. 4 OF 11

DWG

TDI-5455.1

Rev. A

STATE OF TEXAS

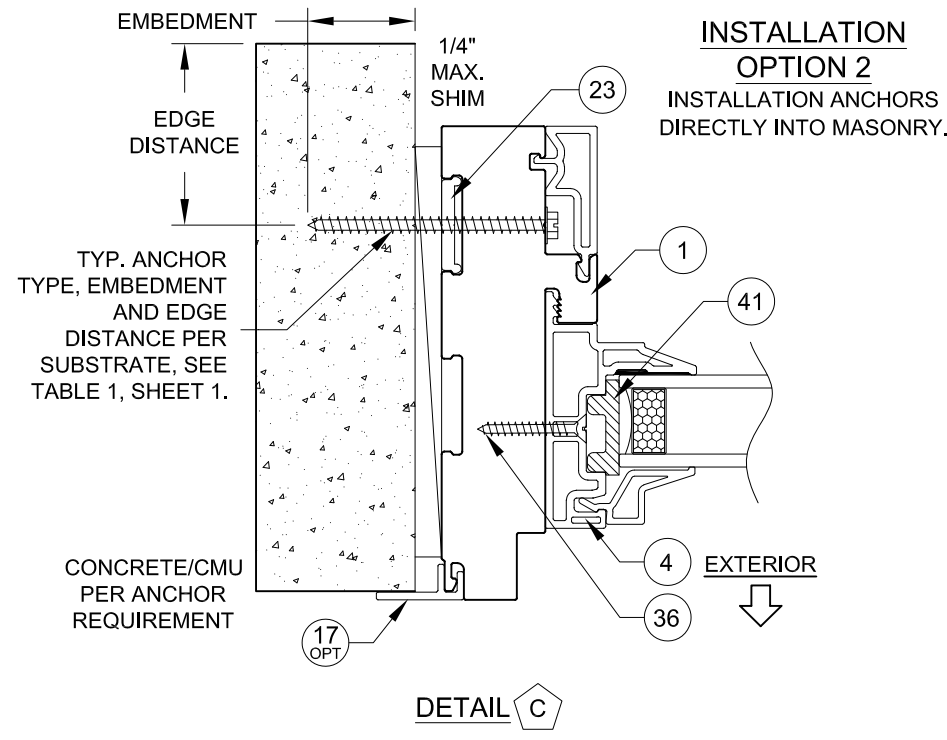
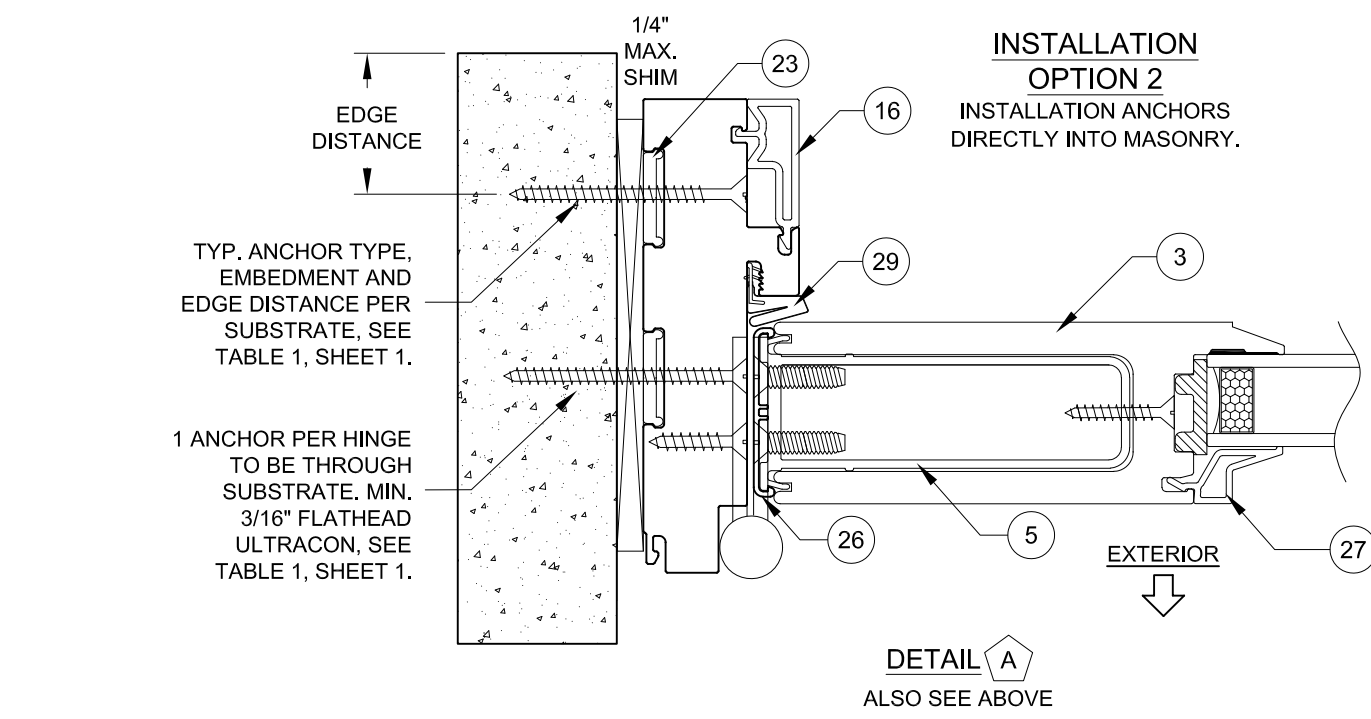
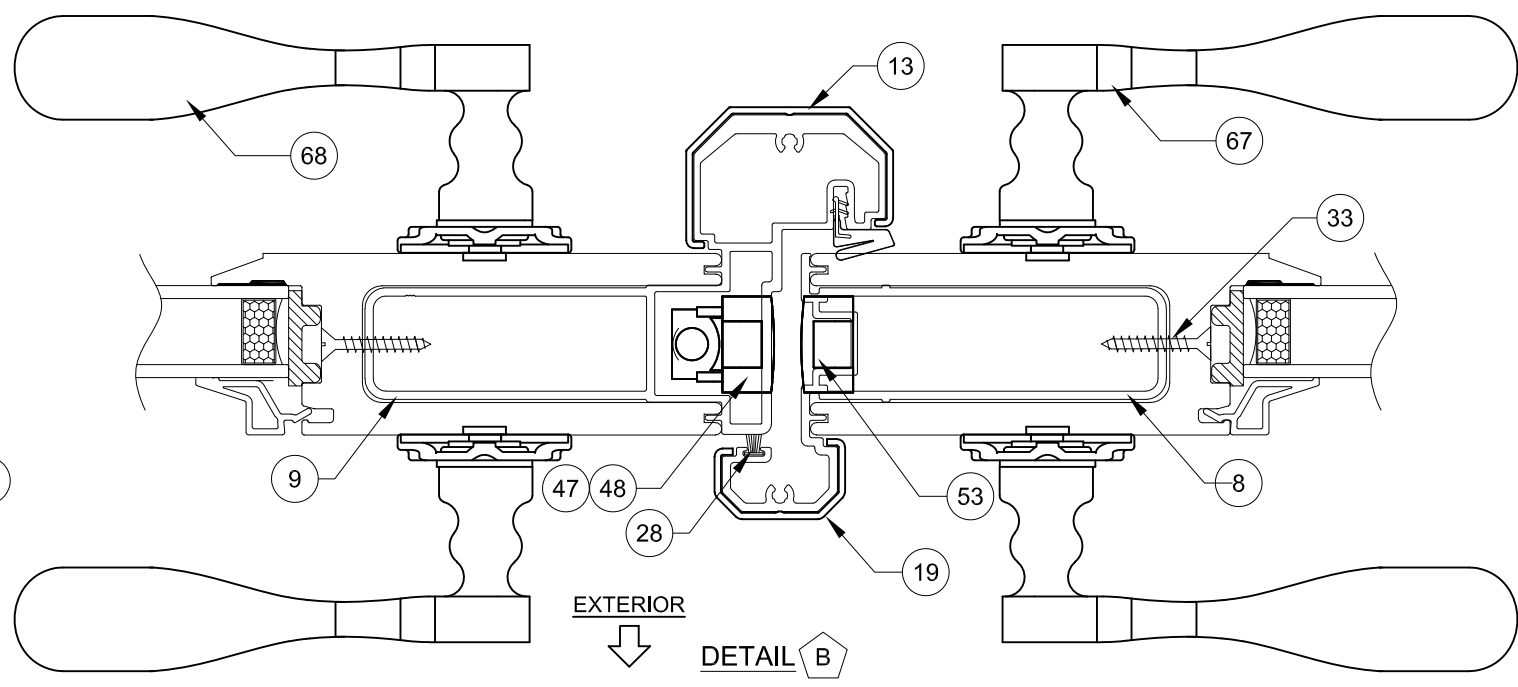
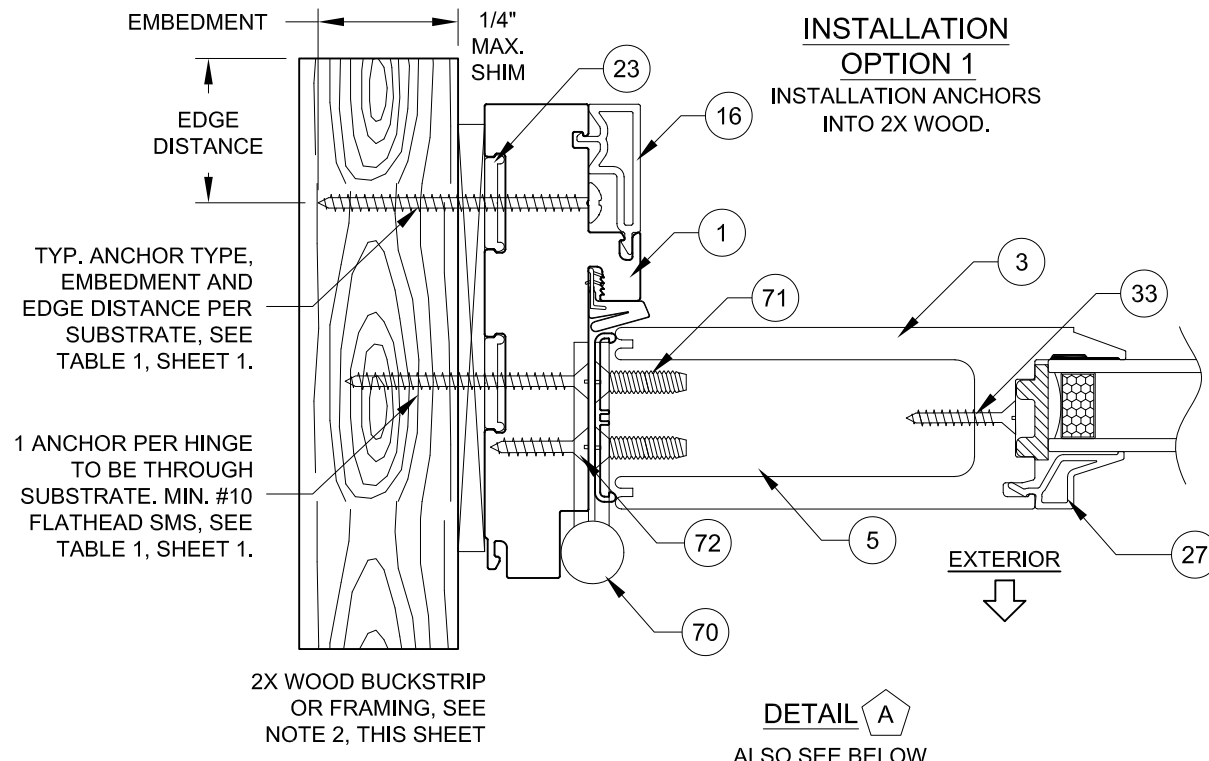
ANTHONY LYNN MILLER

106954

LICENSED
PROFESSIONAL ENGINEER

A. Lynn Miller 1/25/21

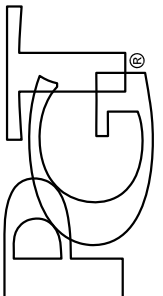
A. LYNN MILLER, P.E.
P.E.# 106954

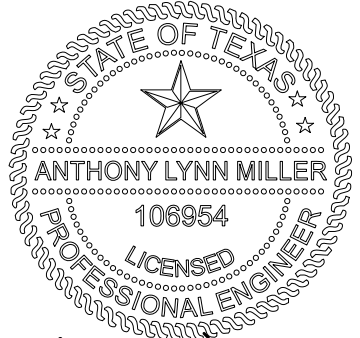


- INSTALLATION NOTES:**
- 1) USE ONLY SUBSTRATE-APPROPRIATE ANCHORS LISTED ON TABLE 1, SHEET 1. FOLLOW EMBEDMENT AND EDGE DISTANCE LIMITS. ANY INSTALLATION OPTION SHOWN MAY BE USED ON ANY SIDE OF THE DOOR, SIDELITE OR TRANSOM.
 - 2) WOOD BUCKS DEPICTED ON THIS SHEET AS "1X", ARE BUCKS WHOSE TOTAL THICKNESS IS LESS THAN 1-1/2". 1X WOOD BUCKS ARE OPTIONAL IF UNIT CAN BE INSTALLED DIRECTLY TO MASONRY. WOOD BUCKS DEPICTED AS "2X" ARE 1-1/2" THICK OR GREATER. INSTALLATION TO THE SUBSTRATE OF WOOD BUCKS TO BE ENGINEERED BY OTHERS OR AS APPROVED BY THE AUTHORITY HAVING JURISDICTION.
 - 3) FOR ATTACHMENT TO METAL: THE STRUCTURAL MEMBER SHALL BE OF A SIZE TO PROVIDE FULL SUPPORT TO THE FRAME OF THE DOOR, SIDELITE OR TRANSOM.
 - 4) IF APPLICABLE, LOWEST DESIGN PRESSURE FROM DOOR, SIDELITE, TRANSOM OR MULLION APPLIES TO THE WHOLE SYSTEM.

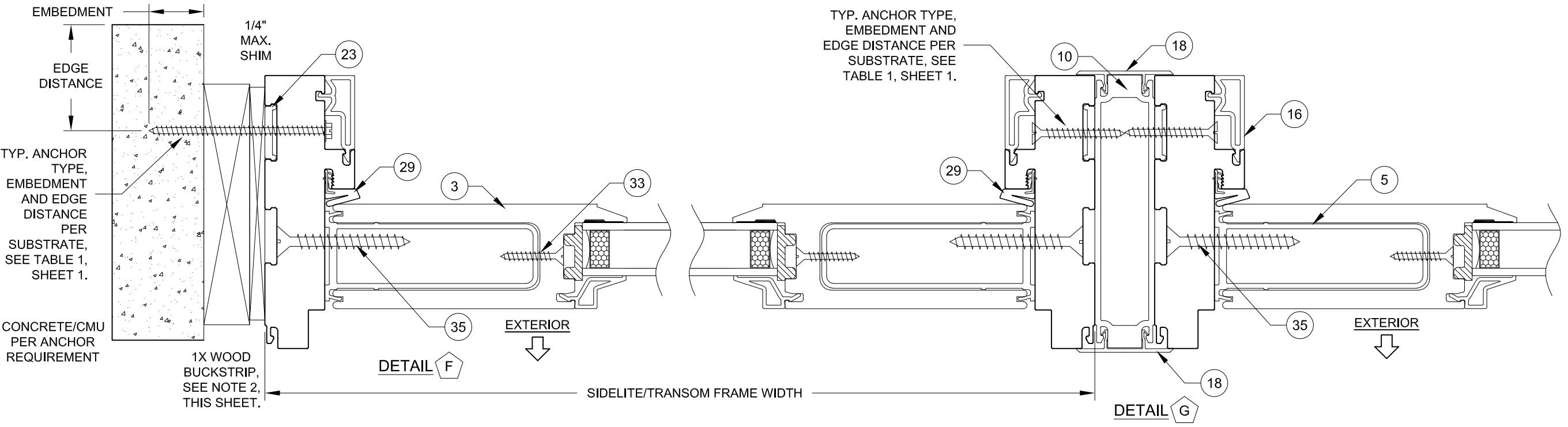
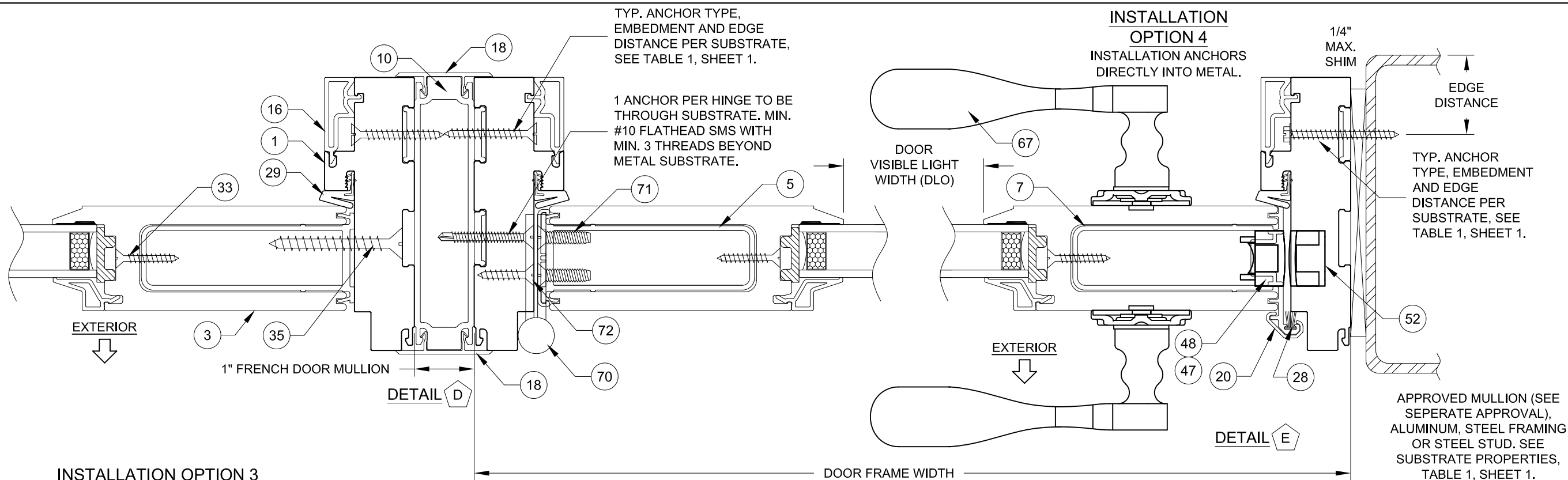
COPYRIGHT © 2021
PGT INDUSTRIES, INC.
LIMITED LICENSE TO MAKE
COPIES FOR PERMITTING.

Revision
A) UPDATED TO NEW BUILDING
CODE, ADDED ANCHOR TYPE,
REVISED TABLES 1, 4 & 6 - JR -
01/22/21

1070 TECHNOLOGY DRIVE N. VENICE, FL 34275 (941)-480-1600	REGISTRATION #29296	Date	5/7/13	J ROSOWSKI	Rev.	A
		Drawn By				TDI-5455.1
	VINYL FRENCH DOOR & SIDL/TRAN. (NI)	Sheet	6 OF 11	INSTALLATION 1	DWG No.	6 OF 11
		Scale	NTS		Series	FD-5455
		Title				



A. Lynn Miller 1/25/21
A. LYNN MILLER, P.E.
P.E.# 106954



INSTALLATION NOTES:

- 1) USE ONLY SUBSTRATE-APPROPRIATE ANCHORS LISTED ON TABLE 1, SHEET 1. FOLLOW EMBEDMENT AND EDGE DISTANCE LIMITS. ANY INSTALLATION OPTION SHOWN MAY BE USED ON ANY SIDE OF THE DOOR, SIDELITE OR TRANSOM.
- 2) WOOD BUCKS DEPICTED ON THIS SHEET AS "1X", ARE BUCKS WHOSE TOTAL THICKNESS IS LESS THAN 1-1/2". 1X WOOD BUCKS ARE OPTIONAL IF UNIT CAN BE INSTALLED DIRECTLY TO MASONRY. WOOD BUCKS DEPICTED AS "2X" ARE 1-1/2" THICK OR GREATER. INSTALLATION TO THE SUBSTRATE OF WOOD BUCKS TO BE ENGINEERED BY OTHERS OR AS APPROVED BY THE AUTHORITY HAVING JURISDICTION.
- 3) FOR ATTACHMENT TO METAL: THE STRUCTURAL MEMBER SHALL BE OF A SIZE TO PROVIDE FULL SUPPORT TO THE FRAME OF THE DOOR, SIDELITE OR TRANSOM.
- 4) IF APPLICABLE, LOWEST DESIGN PRESSURE FROM DOOR, SIDELITE, TRANSOM OR MULLION APPLIES TO THE WHOLE SYSTEM.

COPYRIGHT © 2021
PGT INDUSTRIES, INC.
LIMITED LICENSE TO MAKE
COPIES FOR PERMITTING.

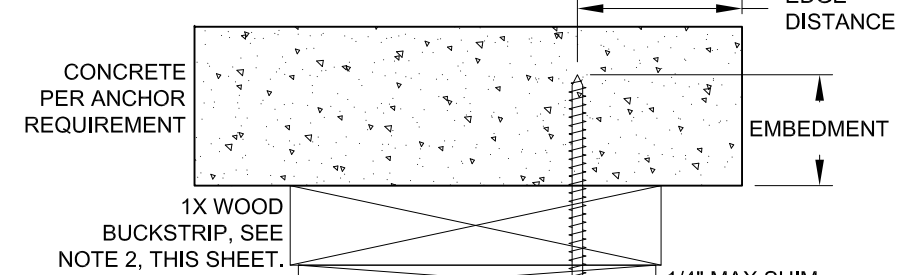
Revision
A) UPDATED TO NEW BUILDING
CODE, ADDED ANCHOR TYPE,
REVISED TABLES 1, 4 & 6 - JR -
01/22/21

1070 TECHNOLOGY DRIVE N. VENICE, FL 34275 (941)-480-1600	REGISTRATION #29296	Date	5/7/13	J ROSOWSKI	A
		Rev.			
VINYL FRENCH DOOR & SDLT/TRAN. (NI)	INSTALLATION 2	Drawn By	J ROSOWSKI	TDI-5455.1	A
		DWG No.	7 OF 11		
FD-5455	NTS	Scale		7 OF 11	7 OF 11
		Sheet			

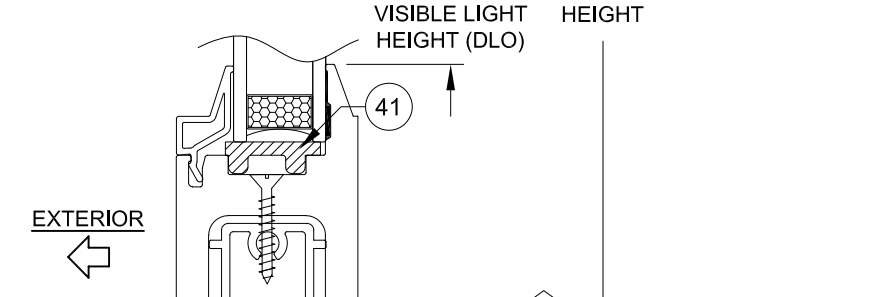
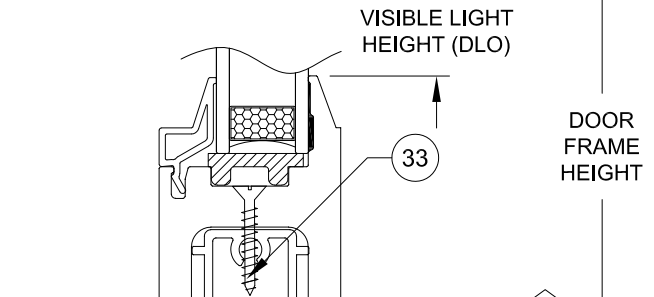
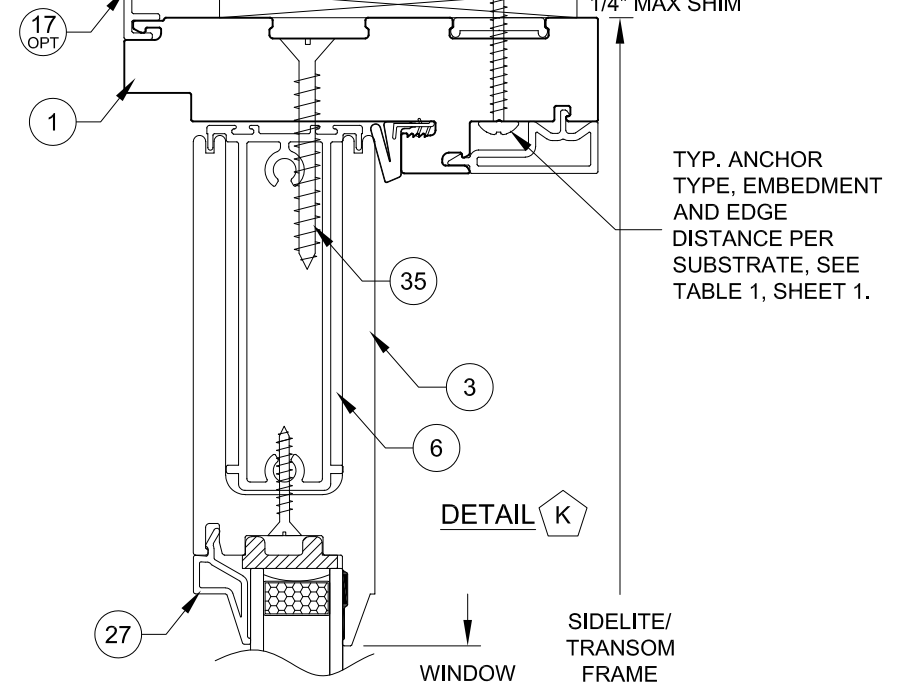
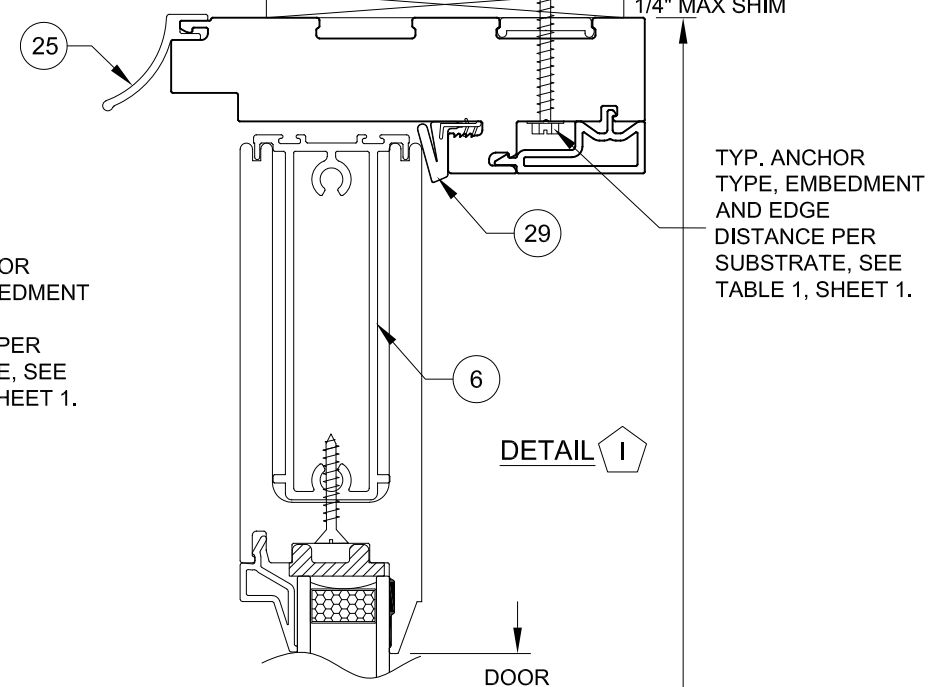
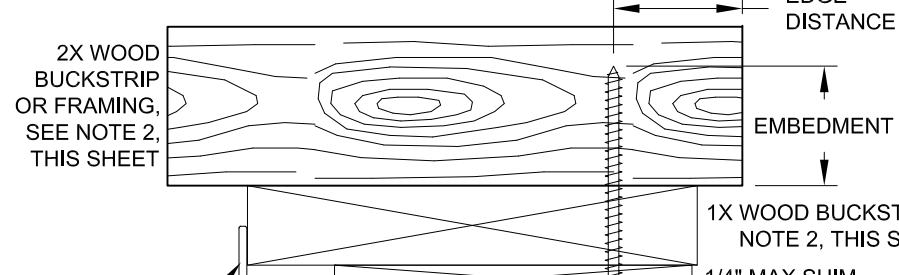
ANTHONY LYNN MILLER
106954
LICENSED PROFESSIONAL ENGINEER

A. Lynn Miller 1/25/21
A. LYNN MILLER, P.E.
P.E.# 106954

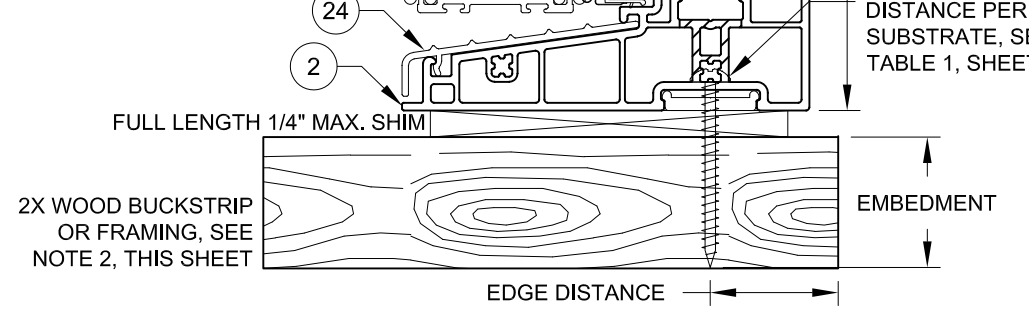
INSTALLATION OPTION 3
INSTALLATION ANCHORS THROUGH
1X BUCKSTRIP INTO MASONRY.



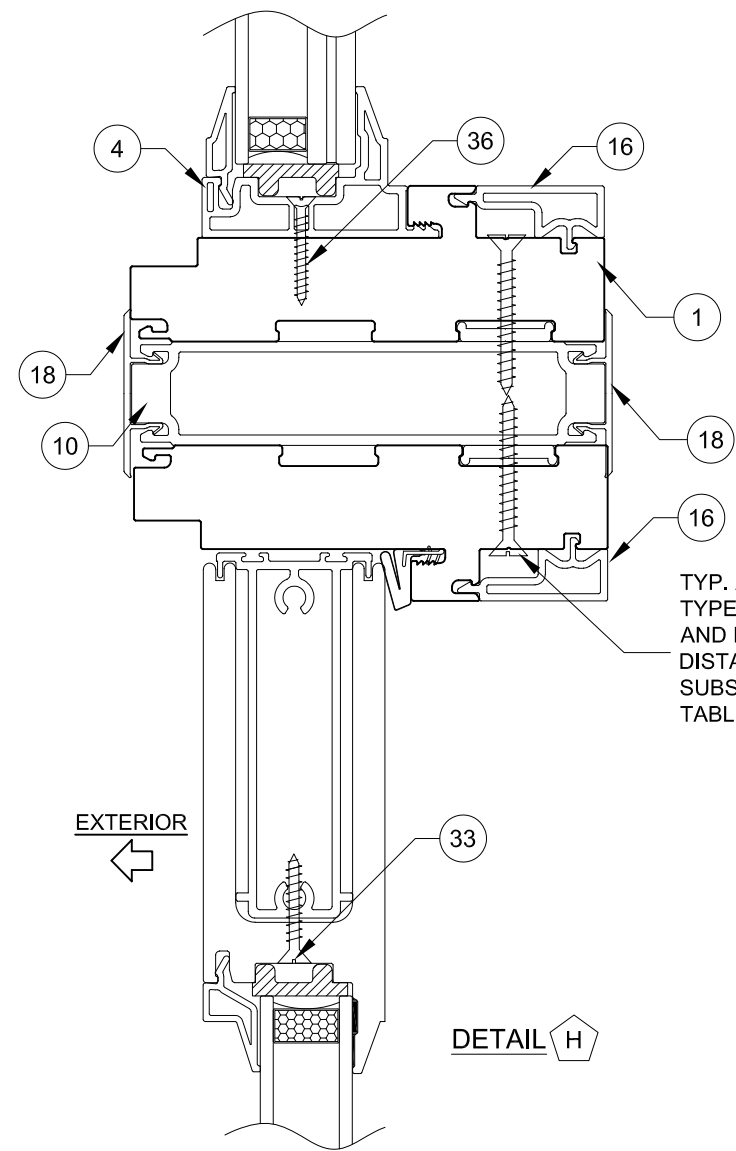
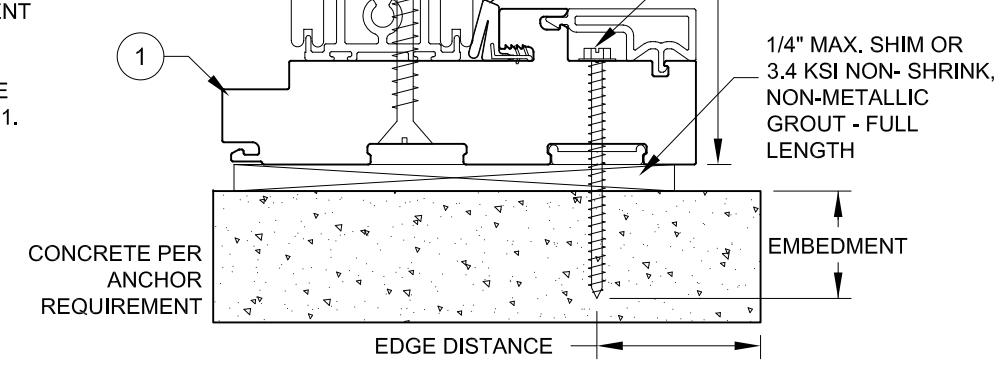
INSTALLATION OPTION 4
INSTALLATION ANCHORS THROUGH
1X BUCKSTRIP INTO WOOD.



INSTALLATION OPTION 1
INSTALLATION ANCHORS INTO 2X WOOD.



INSTALLATION OPTION 2
INSTALLATION ANCHORS DIRECTLY INTO MASONRY.



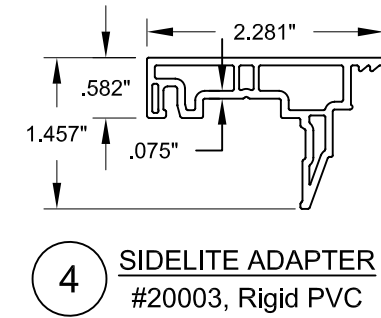
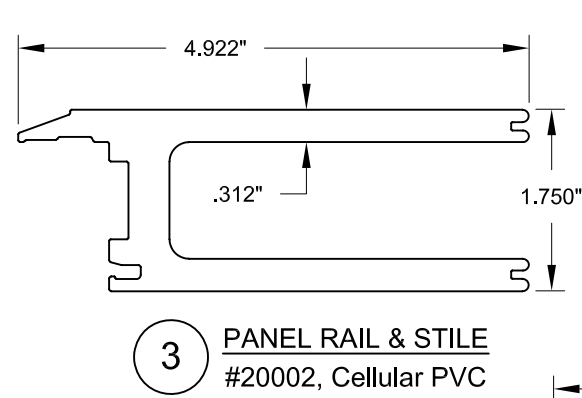
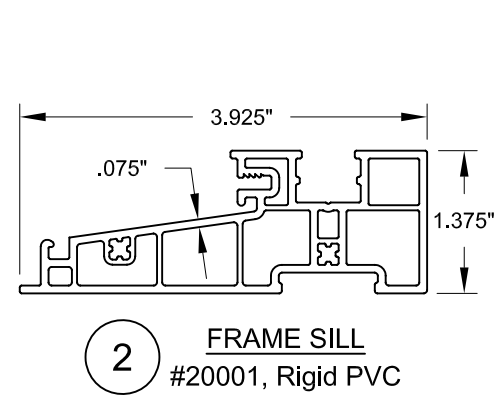
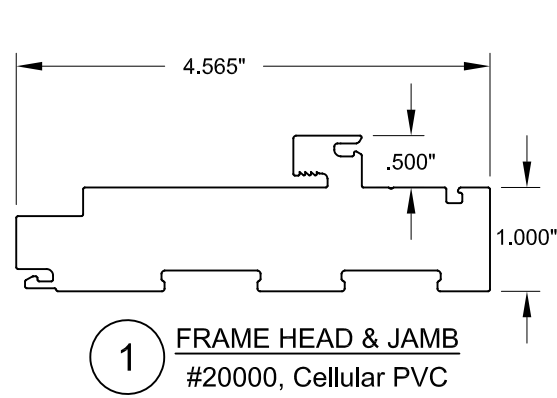
- INSTALLATION NOTES:**
- 1) USE ONLY SUBSTRATE-APPROPRIATE ANCHORS LISTED ON TABLE 1, SHEET 1. FOLLOW EMBEDMENT AND EDGE DISTANCE LIMITS. ANY INSTALLATION OPTION SHOWN MAY BE USED ON ANY SIDE OF THE DOOR, SIDELITE OR TRANSOM.
 - 2) WOOD BUCKS DEPICTED ON THIS SHEET AS "1X", ARE BUCKS WHOSE TOTAL THICKNESS IS LESS THAN 1-1/2". 1X WOOD BUCKS ARE OPTIONAL IF UNIT CAN BE INSTALLED DIRECTLY TO MASONRY. WOOD BUCKS DEPICTED AS "2X" ARE 1-1/2" THICK OR GREATER. INSTALLATION TO THE SUBSTRATE OF WOOD BUCKS TO BE ENGINEERED BY OTHERS OR AS APPROVED BY THE AUTHORITY HAVING JURISDICTION.
 - 3) FOR ATTACHMENT TO METAL: THE STRUCTURAL MEMBER SHALL BE OF A SIZE TO PROVIDE FULL SUPPORT TO THE FRAME OF THE DOOR, SIDELITE OR TRANSOM.
 - 4) IF APPLICABLE, LOWEST DESIGN PRESSURE FROM DOOR, SIDELITE, TRANSOM OR MULLION APPLIES TO THE WHOLE SYSTEM.

COPYRIGHT © 2021
PGT INDUSTRIES, INC.
LIMITED LICENSE TO MAKE
COPIES FOR PERMITTING.

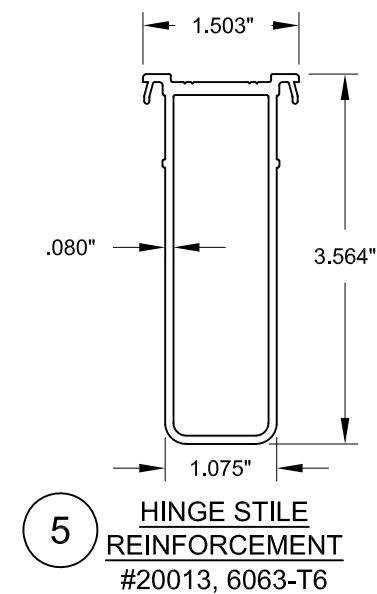
Revision
A) UPDATED TO NEW BUILDING
CODE, ADDED ANCHOR TYPE,
REVISED TABLES 1, 4 & 6 - JR -
01/22/21

1070 TECHNOLOGY DRIVE N. VENICE, FL 34275 (941)-480-1600	REGISTRATION #29296	Date	5/7/13	J ROSOWSKI	A
		By			
VINYL FRENCH DOOR & SDLT/TRAN. (NI)	INSTALLATION 3	DWG No.	8 OF 11	NTS	FD-5455
		Sheet	TDI-5455.1		
Series		Title			

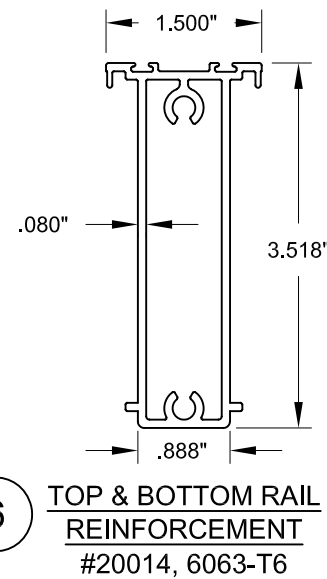
A. Lynn Miller
A. LYNN MILLER, P.E.
P.E.# 106954



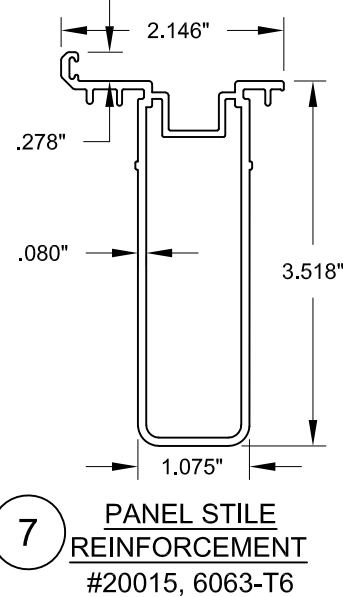
4 SIDELITE ADAPTER
#20003, Rigid PVC



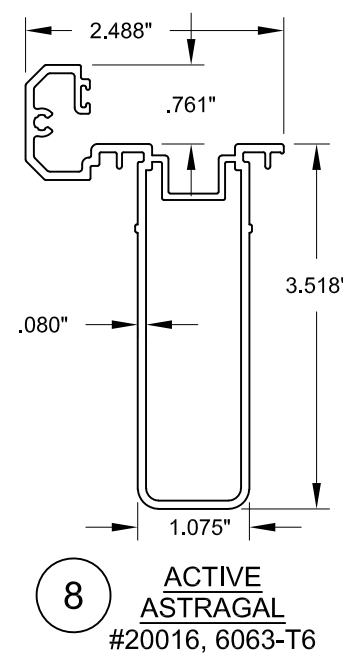
5 HINGE STILE
REINFORCEMENT
#20013, 6063-T6



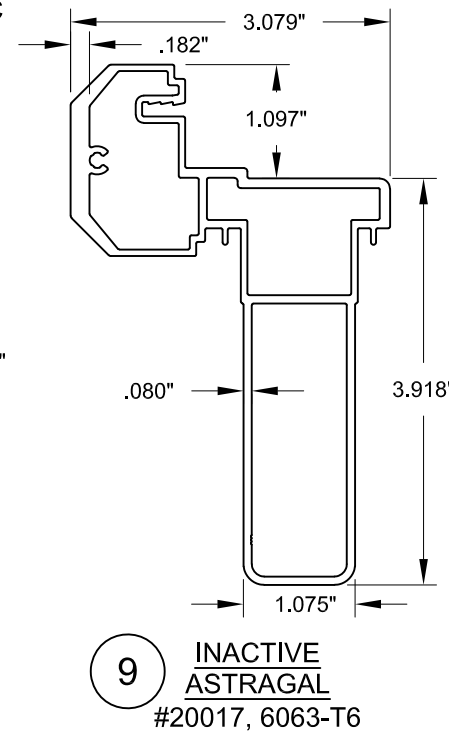
6 TOP & BOTTOM RAIL
REINFORCEMENT
#20014, 6063-T6



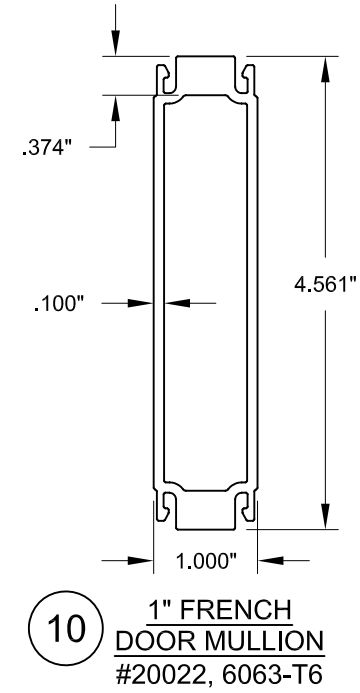
7 PANEL STILE
REINFORCEMENT
#20015, 6063-T6



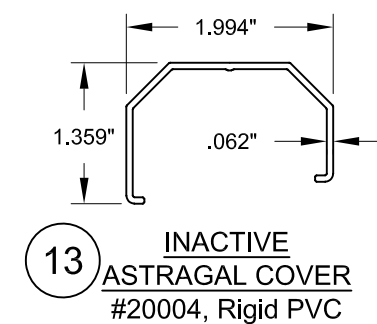
8 ACTIVE
ASTRAGAL
#20016, 6063-T6



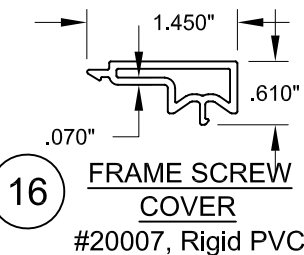
9 INACTIVE
ASTRAGAL
#20017, 6063-T6



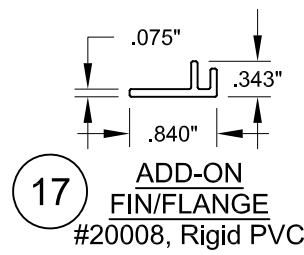
10 1" FRENCH
DOOR MULLION
#20022, 6063-T6



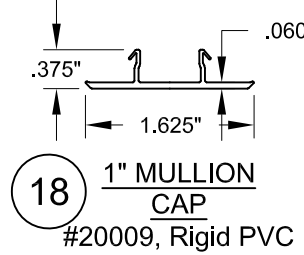
13 INACTIVE
ASTRAGAL COVER
#20004, Rigid PVC



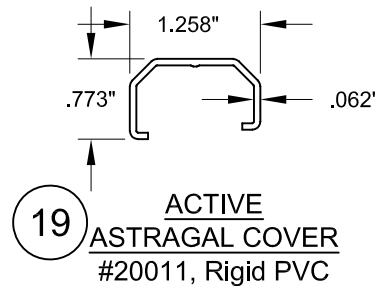
16 FRAME SCREW
COVER
#20007, Rigid PVC



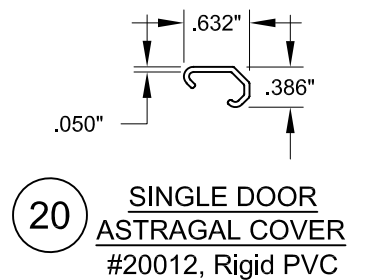
17 ADD-ON
FIN/FLANGE
#20008, Rigid PVC



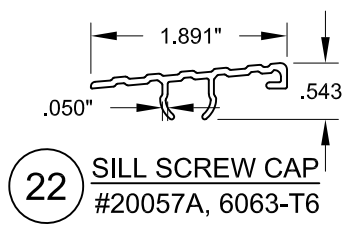
18 1" MULLION
CAP
#20009, Rigid PVC



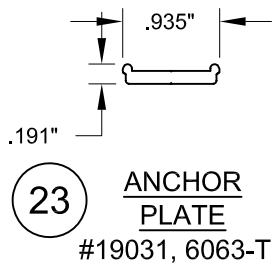
19 ACTIVE
ASTRAGAL COVER
#20011, Rigid PVC



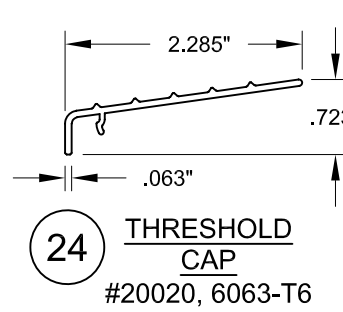
20 SINGLE DOOR
ASTRAGAL COVER
#20012, Rigid PVC



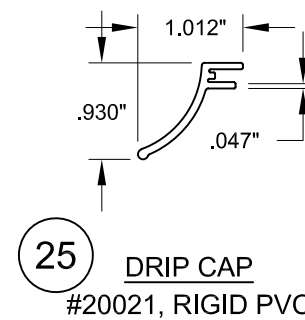
22 SILL SCREW CAP
#20057A, 6063-T6



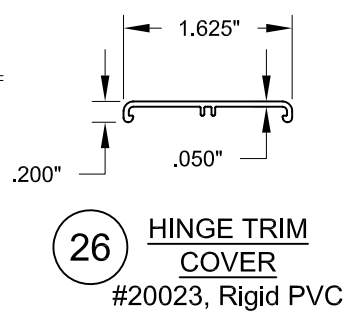
23 ANCHOR
PLATE
#19031, 6063-T6



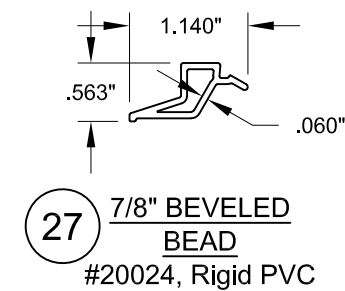
24 THRESHOLD
CAP
#20020, 6063-T6



25 DRIP CAP
#20021, RIGID PVC



26 HINGE TRIM
COVER
#20023, Rigid PVC



27 7/8" BEVELED
BEAD
#20024, Rigid PVC

COPYRIGHT © 2021
PGT INDUSTRIES, INC.
LIMITED LICENSE TO MAKE
COPIES FOR PERMITTING.

Revision
A) UPDATED TO NEW BUILDING
CODE, ADDED ANCHOR TYPE,
REVISED TABLES 1, 4 & 6 - JR -
01/22/21

1070 TECHNOLOGY DRIVE N. VENICE, FL 34275 (941)-480-1600	REGISTRATION #29296	Date	5/7/13	J ROSOWSKI	A
		By			
VINYL FRENCH DOOR & SIDL/TRAN. (NI) EXTRUSIONS	FD-5455	DWG No.	TDI-5455.1	9 OF 11	Sheet
		Scale	NTS		
Series		Title			

ANTHONY LYNN MILLER
106954
LICENSED
PROFESSIONAL ENGINEER

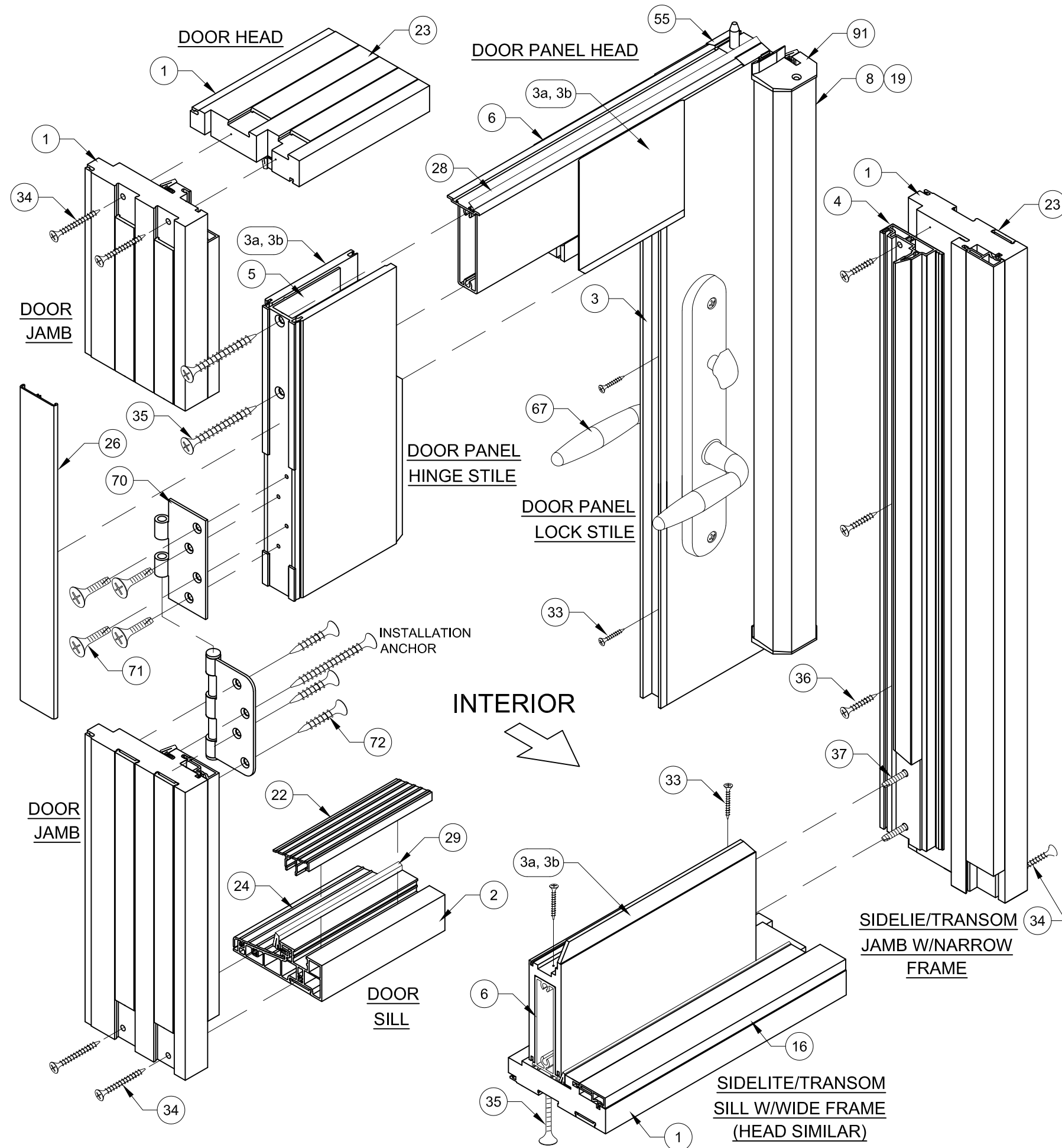
A. Lynn Miller 1/25/21
A. LYNN MILLER, P.E.
P.E.# 106954

TABLE 10:

#	PGT Part #	Description	Material
1	20000	Door & Sidelite/Transom Main Frame	Cellular PVC
2	20001	Door Frame Sill	Rigid PVC
3	20002	Panel Stile & Rail	Cellular PVC
4	20003	Sidelite Adapter	Rigid PVC
5	20013	Hinge Stile Reinforcement	Alum., 6063-T6
6	20014	Panel Rail Reinforcement	Alum., 6063-T6
7	20015	Panel Stile Reinforcement	Alum., 6063-T6
8	20016	Active Astragal	Alum., 6063-T6
9	20017	Inactive Astragal	Alum., 6063-T6
10	20022	1" French Door Mullion	Alum., 6063-T6
13	20004	Inactive Astragal Cover	Rigid PVC
16	20007	Screw Cover	Rigid PVC
17	20008	Add-on Fin/Flange	Rigid PVC
18	20009	1" Mullion Cap	Rigid PVC
19	20011	Active Astragal Cover	Rigid PVC
20	20012	Single Door Astragal Cover	Rigid PVC
22	19009	Sill Screw Cover	Alum., 6063-T6
23	19031	Anchor Plate	Alum., 6063-T6
24	20020	Threshold Cover	Alum., 6063-T6
25	20021	Drip Cap	Rigid PVC
26	20023	Hinge Trim Cover	Rigid PVC
27	20024	7/8" Beveled Bead	Rigid PVC
28		Fin Weatherstrip	
29	1671/3	Frame Weatherstrip	
31	714FPT410XW	Frame-to-Wide Slab Screw: #14 X 1-1/2" Phil. FH	Stainless Steel
32	7S101X	Frame-to-Narrow Slab Screw: #10 X 1" Phil. FH	Stainless Steel
33	78X1FPT410	Reinforcement Screw: #8 X 1" Phil. FH	Stainless Steel
34	710X2FPAX	Frame Assembly Screw: #10 X 2" Phil. FH	Stainless Steel
35	714FPT410XW	W-W Slab Assembly Screw: #14 X 1-1/2" Phil. FH	Stainless Steel
36	7S101X	N-N Slab Assembly Screw: #10 X 1" Phil. FH	Stainless Steel
37	71420X2.25	N-W Slab Assembly Screw: #14 X 2-1/4" Phil. FH	Stainless Steel
39		DuraSeal Spacer	
40	62689	SuperSpacer	
41	720026	Setting Block, (Duro.=85 +/- 5)	EPDM
42		Backbedding: Dow-791, 983, 995 or GE-7700	Silicone
43		Argon Gas	
44	6HL5140	Hot Melt Butyl	
47 - 73		see Hardware BOM, Table 9, Sheet 12	
90	20033	Inactive Astragal Cap	Acetal

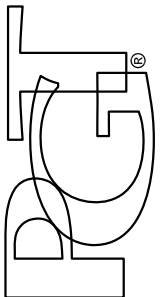
DAYLITE OPENING (DLO) SIZES

WHEN USING PART # 3: (WIDE RAILS OR STILES)
 X DOOR FRAME HEIGHT - 12.1 = DLO HEIGHT
 X DOOR FRAME WIDTH - 12.3 = DLO WIDTH
 (XX DOOR FRAME HEIGHT / 2) - 12.1 = DLO HEIGHT
 (XX DOOR FRAME WIDTH / 2) - 11.7 = DLO WIDTH
 SLT/TR FRAME HEIGHT - 12.1 = DLO HEIGHT
 SLT/TR FRAME WIDTH - 12.1 = DLO WIDTH
 WHEN USING PART # 4: (NARROW RAILS OR STILES)
 SLT/TR FRAME HEIGHT - 4.9 = DLO HEIGHT
 SLT/TR FRAME WIDTH - 4.9 = DLO WIDTH



COPYRIGHT © 2021
 PGT INDUSTRIES, INC.
 LIMITED LICENSE TO MAKE
 COPIES FOR PERMITTING.

Revision
 A) UPDATED TO NEW BUILDING
 CODE, ADDED ANCHOR TYPE,
 REVISED TABLES 1, 4 & 6 - JR -
 01/22/21

1070 TECHNOLOGY DRIVE N. VENICE, FL 34275 (941)-480-1600	REGISTRATION #29296	Date	5/7/13	Rev.	A
		By	J ROSOWSKI	DWG No.	TDI-5455.1
 VINYL FRENCH DOOR & SDLT/TRAN. (NI) CORNER DETAILS AND BOM	REGISTRATION #29296 CORNER DETAILS AND BOM	Scale	NTS	Sheet	10 OF 11
		Series	FD-5455	Desc.	NTS

STATE OF TEXAS
 ANTHONY LYNN MILLER
 106954
 LICENSED PROFESSIONAL ENGINEER
 A. Lynn Miller 1/25/21
 A. LYNN MILLER, P.E.
 P.E.# 106954

HARDWARE DETAILS & LOCATIONS

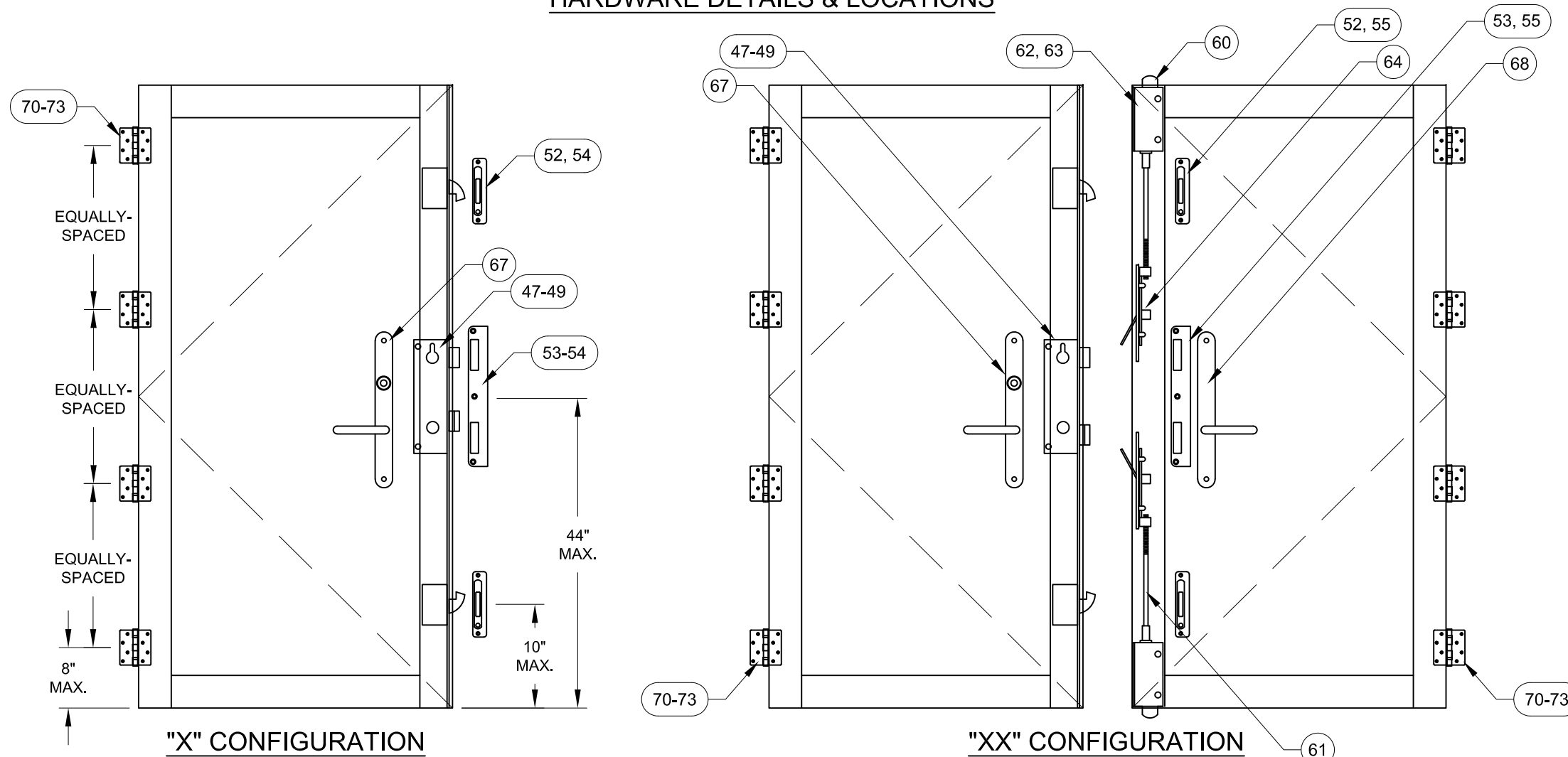
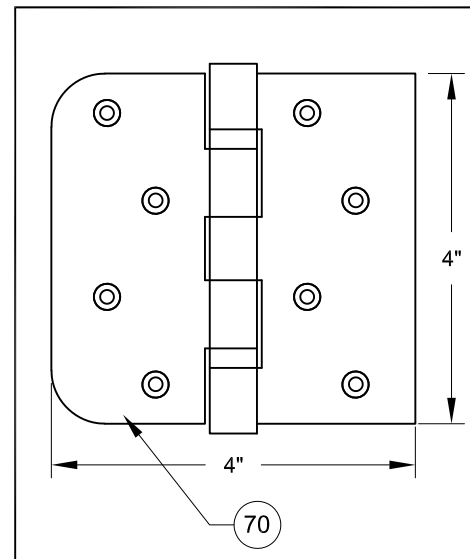


TABLE 11:

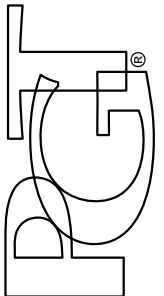
#	PGT Part #	Description	Material
47	666032701	P3000 3-PT Rhino Lock (6'8")	
48	666032702	P3000 3-PT Rhino Lock (over 6'8")	
49	71032X1FPFX	Rhino Lock Screw: 10-32 X 1" Phil. FH	
52	20027	Adjustable Strike Plate Assembly	Stainless Steel
53	20028	Center Strike Plate Assembly	Stainless Steel
54	7S101X	Strike Plate Screw, (X): #10 X 1" Phil. FH	410 S.S.
55	78X12PFHUX	Strike Plate Screw, (XX): #8 X 1/2" Phil. FH	410 S.S.
60	7SB1202	Flush Bolt (XX)	
61	7803725	Flush Bolt Rod (XX)	
62	420034	Flush Bolt Guides (XX)	
63	7832X12FPXP	Flush Bolt Screw: 8-32 X 1/2" Phil. FH	
64	48033N	Guide Pin (XX)	
65	78036	Flush Bolt Strike Plate (XX)	Stainless Steel
66	7832X12FPXP	Flush Bolt Strike Plate Screw, (XX): #8 X 3/4" Phil. FH	410 S.S.
67	varies	Handle/Lever	
68	varies	Dummy Handle/Lever	
70	20025	Butt Hinge	Stainless Steel
71	71032X1FPFX	Hinge, Slab Screw: #10-32 X 1" Phil FH	Stainless Steel
72	7S101X	Hinge, Frame Screw: #10 X 1" Phil. FH	Stainless Steel

HINGE DETAIL:



COPYRIGHT © 2021
PGT INDUSTRIES, INC.
LIMITED LICENSE TO MAKE
COPIES FOR PERMITTING.

Revision
A) UPDATED TO NEW BUILDING
CODE, ADDED ANCHOR TYPE,
REVISED TABLES 1, 4 & 6 - JR -
01/22/21

1070 TECHNOLOGY DRIVE N. VENICE, FL 34275 (941)-480-1600	REGISTRATION #29296	Date 5/7/13	By J ROSOWSKI	Rev. A
	VINYL FRENCH DOOR & SDLT/TRAN. (NI)	Drawn J ROSOWSKI	DWG No. TDI-5455.1	Sheet A
	DESIGN PRESSURE TABLES 3	Scale NTS	Series FD-5455	11 OF 11


ANTHONY LYNN MILLER
 106954
 LICENSED
 PROFESSIONAL ENGINEER
A. Lynn Miller 1/25/21
 A. LYNN MILLER, P.E.
 P.E.# 106954