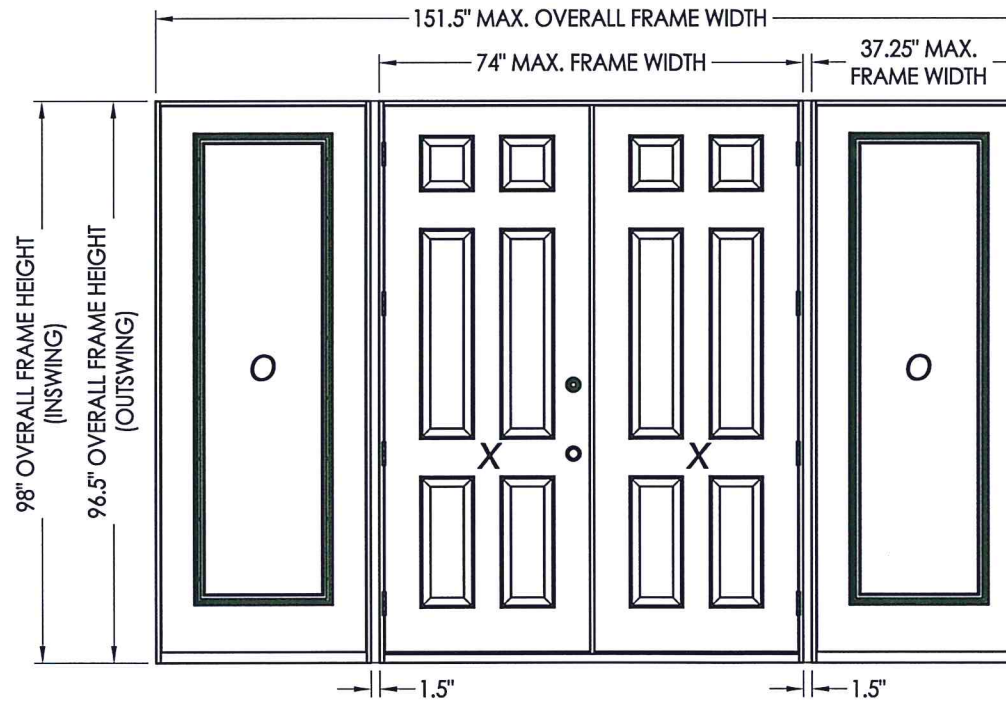
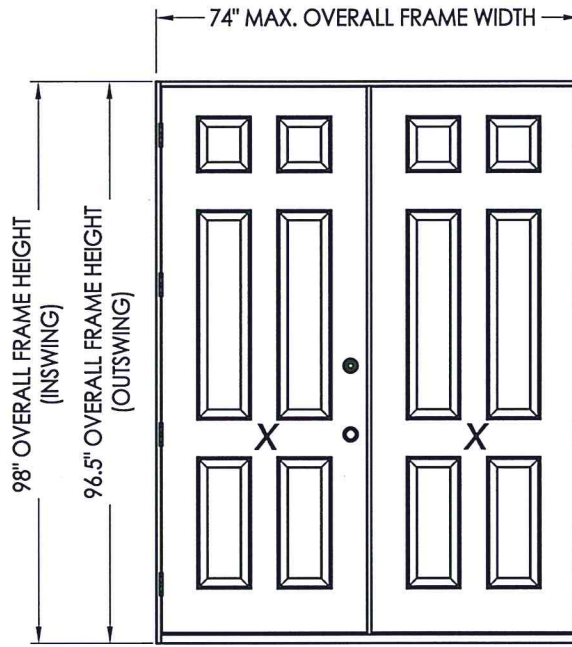




AMERICA'S DOORMAKER
631 N. FIRST ST. WEST BRANCH, MI 48661

OPAQUE STEEL DOORS DOUBLES w/ or w/o SIDELITES IN SWING / OUT SWING "IMPACT"



EVALUATED FOR USE IN THE STATE OF TEXAS

The Steel Door system described herein complies with the 2018 International Residential Code (IRC), Sections R301 & R609 and the 2018 International Building Code (IBC), Sections 1404.13, 1609, 1709.5, 2403 and 2404 subject to the following conditions:

1. Anchors shall be as listed and spaced as shown in the details. Anchor embedment to base material shall be beyond wall dressing or stucco.
2. This system has been tested and evaluated as a large missile impact protective system for installation in areas that require wind borne debris protection. This product meets missile level "D" as defined in ASTM E 1996.
3. Allowable design pressure requirements must be equal to or less than the design pressure rating shown in the design pressure chart, sheet 1 of this drawing.
4. Conditions not covered by this drawing are subject to further engineering analysis.

TABLE OF CONTENTS

SHEET#	DESCRIPTION
1	Typical elevations, design pressures & general notes
2	Door panel details
3	Sidelite panel details
4	Elevations
5	Vertical cross sections
6	Horizontal cross sections
7	Hardware details
8	Frame anchoring
9	Bill of materials and components

CONFIG.	MAX. FRAME DIMENSION	DESIGN PRESSURE (PSF) INSWING		DESIGN PRESSURE (PSF) OUTSWING	
		POS.	NEG.	POS.	NEG.
XX	74.0" x 98.0"	+50.0	-50.0	+50.0	-50.0
OXXO	151.5" x 98.0"	+50.0	-50.0	+50.0	-50.0



Documents Prepared By: Lyndon F. Schmidt, P.E.
TEXAS P.E. #104123

RW BUILDING CONSULTANTS, INC.
P.O. Box 230 Vairco FL 33595
Phone No.: 813.659.9197

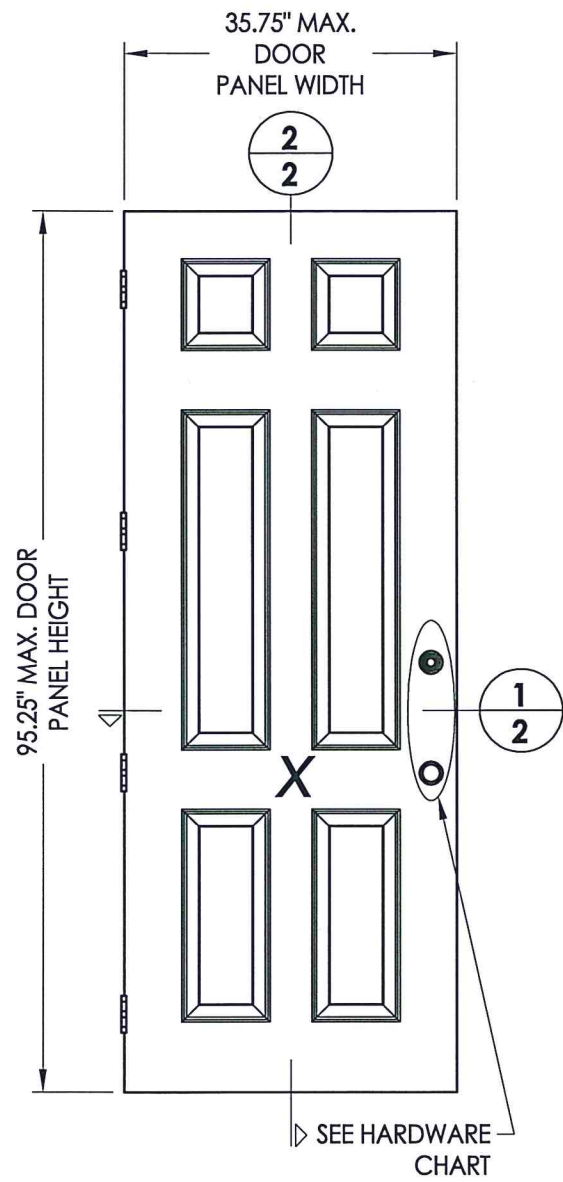
TEXAS BOARD OF PROFESSIONAL ENGINEERS
CERTIFICATE OF REGISTRATION # F-11852

PRODUCT: TAYLOR DOOR STEEL DOOR

PART OR ASSEMBLY: TYPICAL ELEVATION, DESIGN PRESSURES & GENERAL NOTES

NO.	DATE	REVISIONS
1	8/18/20	UPDATE TO 2018 IBC/IRC CODE
		LFS
		BY

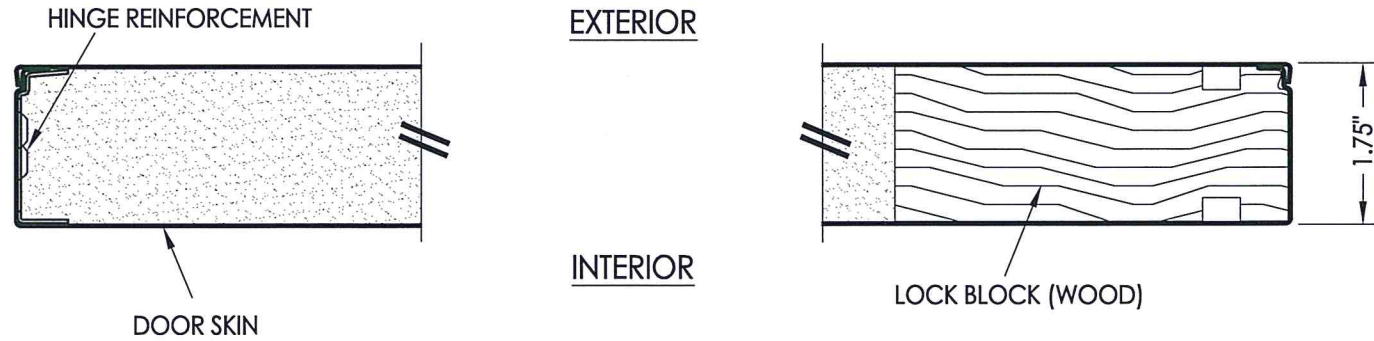
DATE: 11/3/14
SCALE: N.T.S.
DWG. BY: JK
CHK. BY: LFS
DRAWING NO.: TX-4511
SHEET 1 OF 9



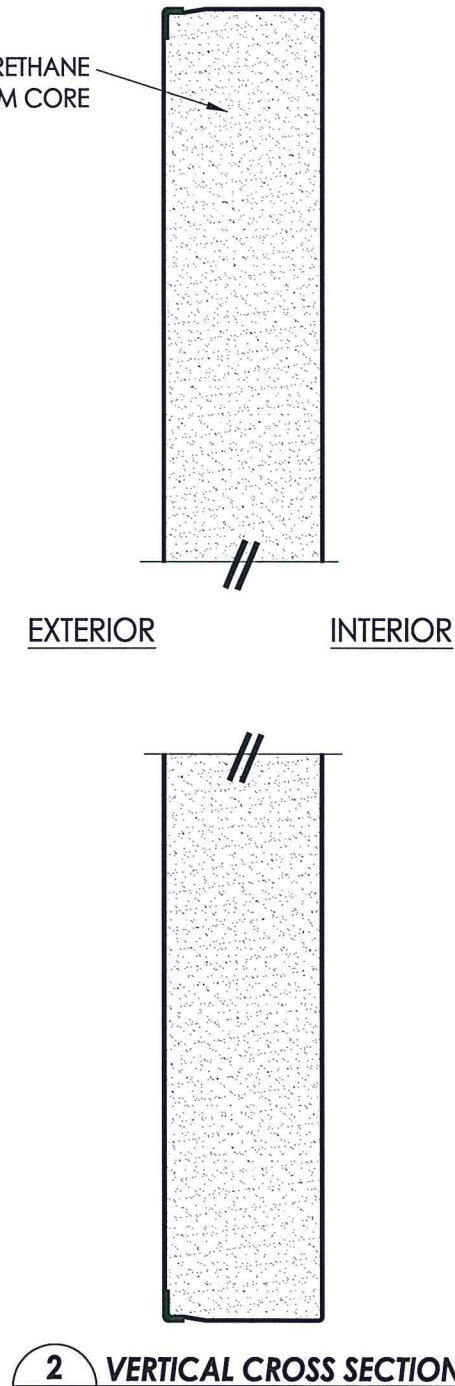
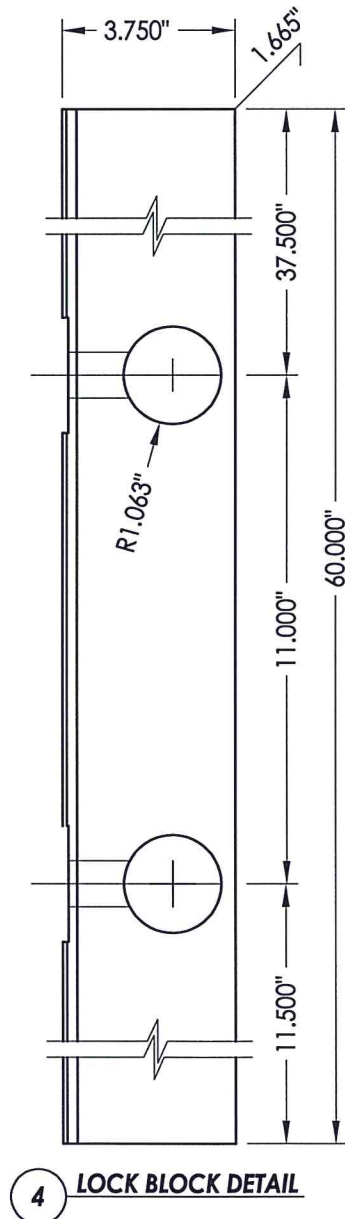
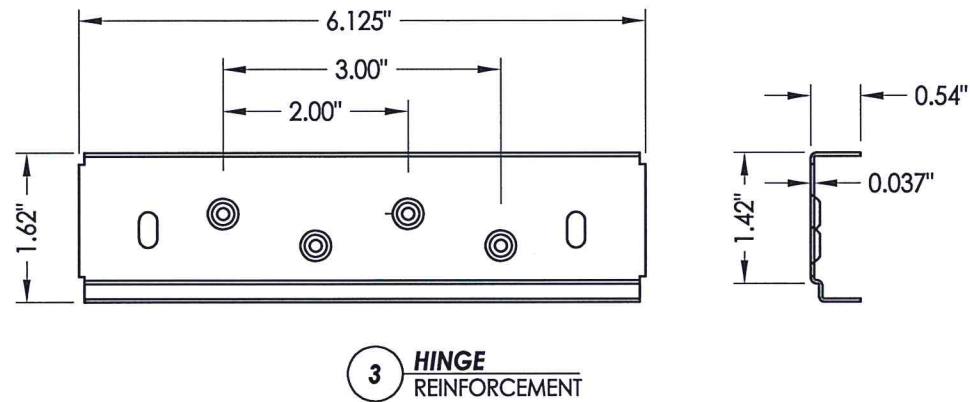
40 STEEL EDGE DOOR PANEL

DOOR SKIN: 0.022" MIN. THK. STEEL
CORE MATERIAL: POLYURETHANE FOAM

HARDWARE CHART	
MANUFACTURER	MODEL
YALE	KNOB: NEW TRADITIONS DEADBOLT: NEW TRADITIONS (800 SERIES)
SCHLAGE	KNOB/LEVER: "F" SERIES DEADBOLT: B60/62



1 HORIZONTAL CROSS SECTION



Documents Prepared By: Lyndon F. Schmidt, P.E.
TEXAS P.E. #104123

RW BUILDING CONSULTANTS, INC.
P.O. Box 230 Valrico FL, 33595
Phone No.: 813.659.9197

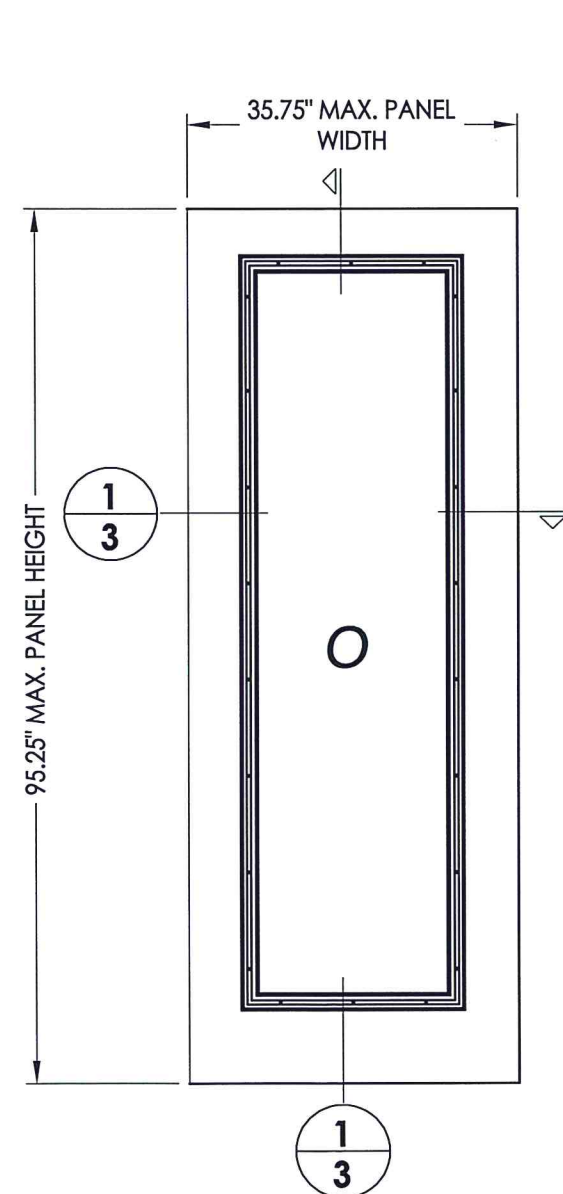
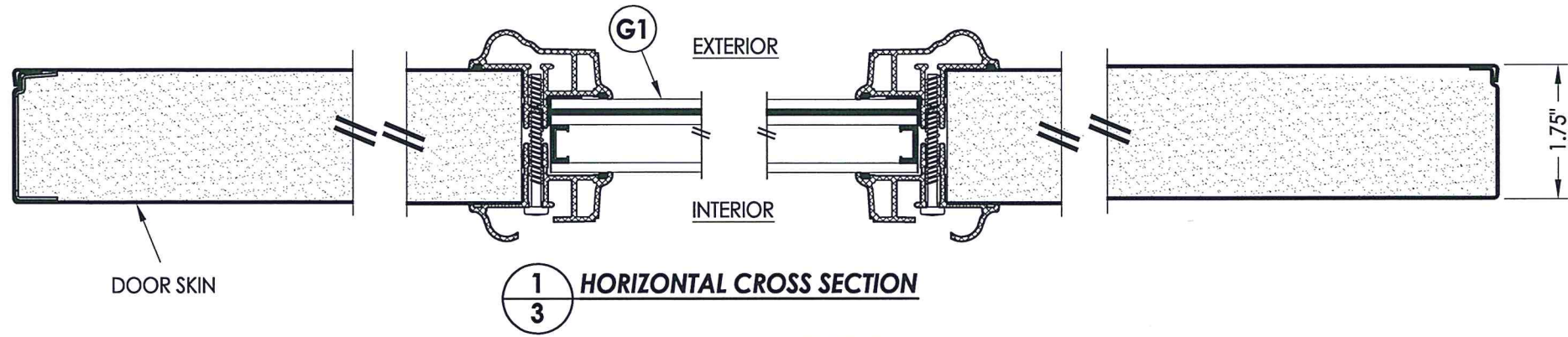
TEXAS BOARD OF PROFESSIONAL ENGINEERS
CERTIFICATE OF REGISTRATION # F-11852

PRODUCT:	TAYLOR DOOR STEEL DOOR
PART OR ASSEMBLY:	DOOR PANEL DETAILS

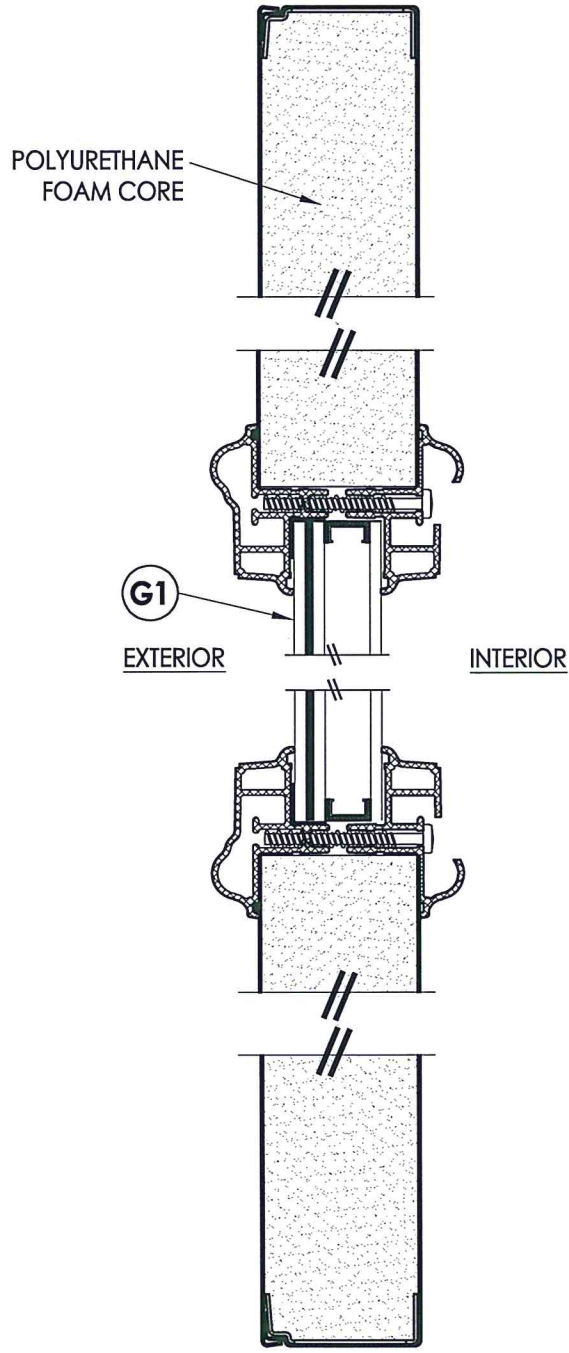
NO.	DATE	BY
1	8/18/20	LFS
UPDATE TO 2018 IBC/IRC CODE		

DATE:	11/3/14
SCALE:	N.T.S.
DWG. BY:	JK
CHK. BY:	LFS
DRAWING NO.:	TX-4511
SHEET	2 OF 9

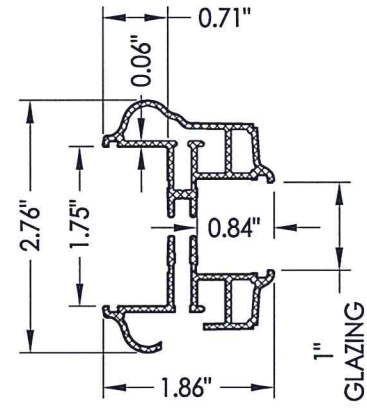
R:\Clients\Taylor Permanent\B - Texas Dept of Ins\TDI - DR 735 6'8 & 8'0 Opaque Steel Doors Impact\Drawings\TX-4508-11.dwg, 3.4



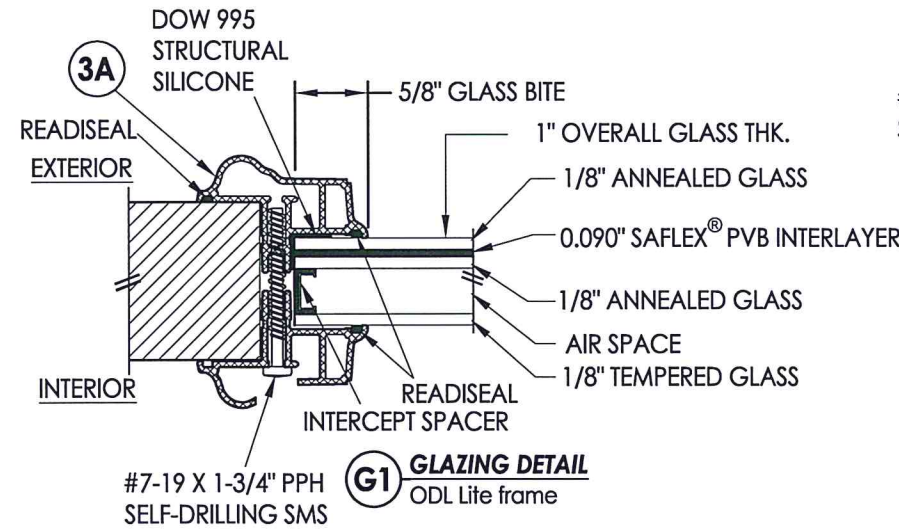
50 TAYLOR SIDELITE PANEL
 DOOR SKIN: 0.022" MIN. THK. STEEL
 CORE MATERIAL: POLYURETHANE FOAM



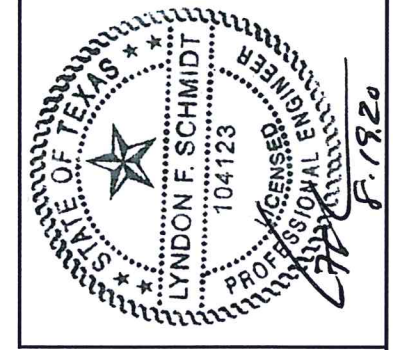
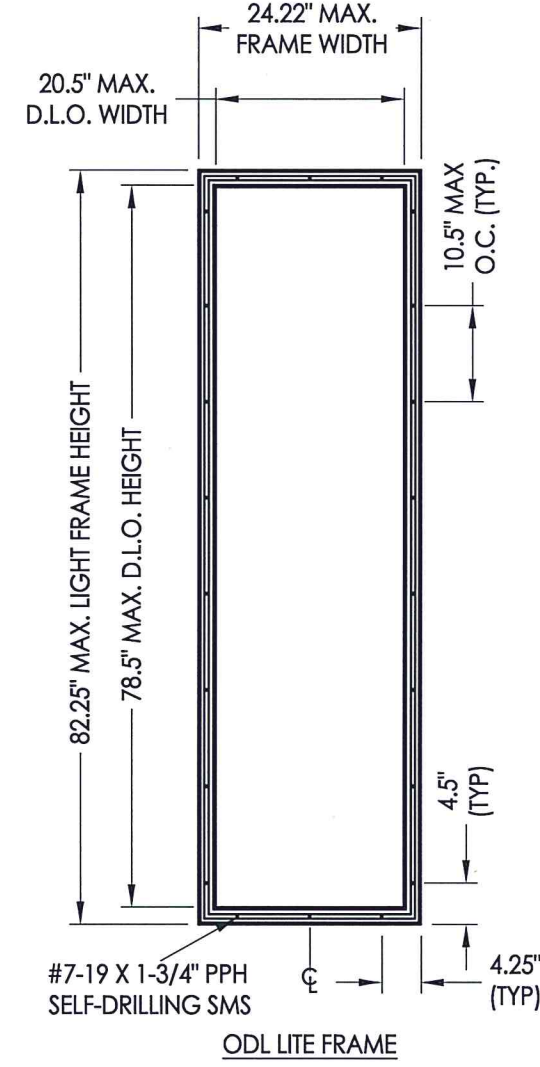
2 VERTICAL CROSS SECTION



3A OD LITE FRAME
 Aluminum



G1 GLAZING DETAIL
 OD LITE frame

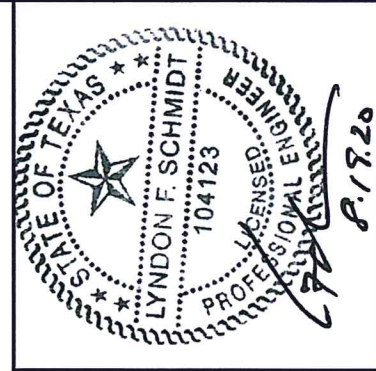
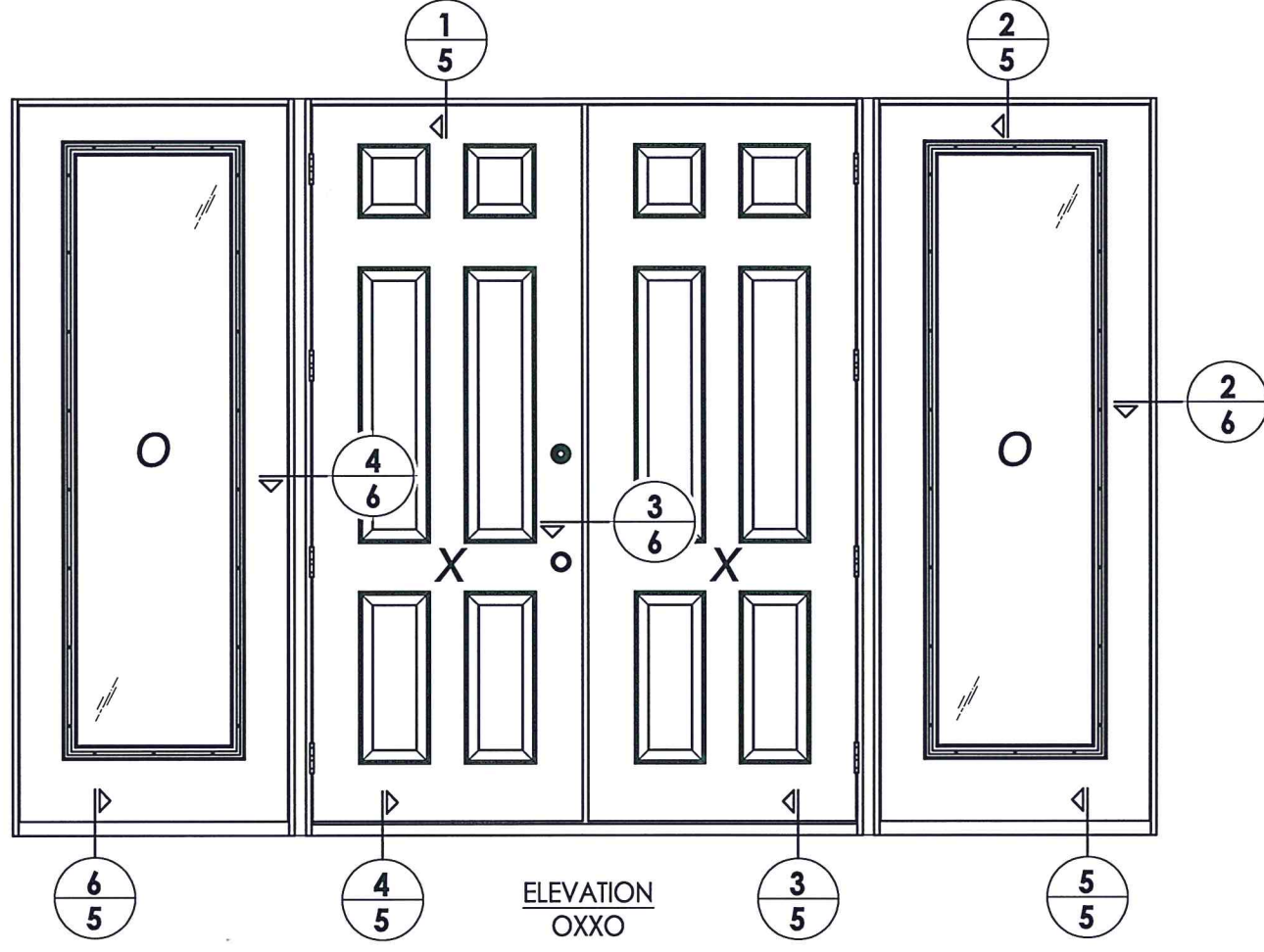
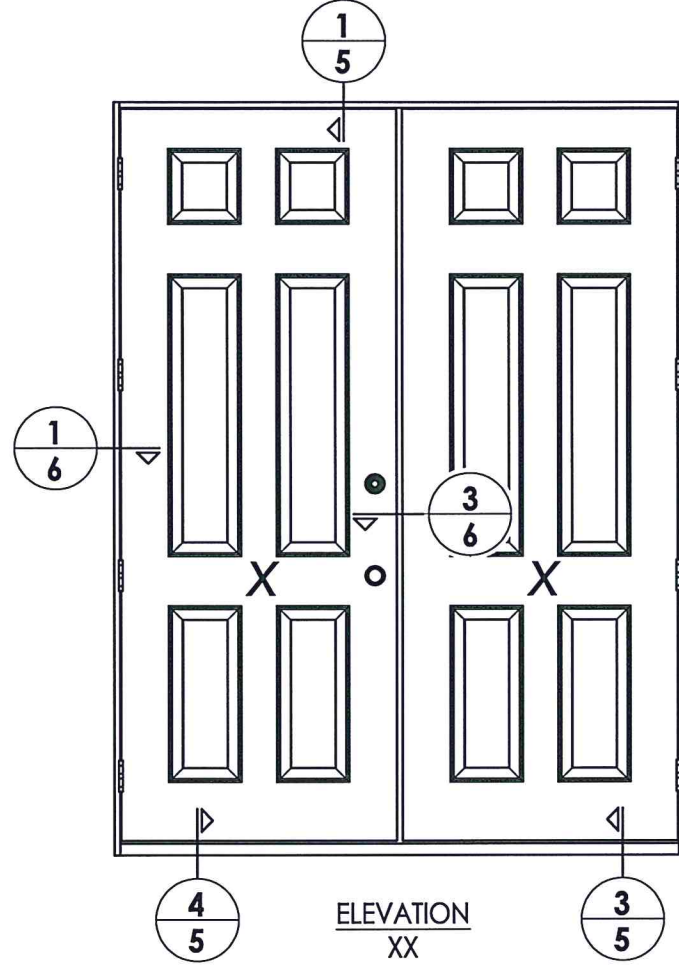


Documents Prepared By: Lyndon F. Schmidt, P.E.
 TEXAS P.E. #104123
RW BUILDING CONSULTANTS, INC.
 P.O. Box 230 Valrico FL 33595
 Phone No.: 813.659.9197
 TEXAS BOARD OF PROFESSIONAL ENGINEERS
 CERTIFICATE OF REGISTRATION # F-11652

PRODUCT: TAYLOR DOOR
 STEEL DOOR
 PART OR ASSEMBLY:
 SIDELITE
 PANEL DETAILS

NO.	DATE	REVISIONS
1	8/18/20	UPDATE TO 2018 IBC/IRC CODE
		LFS
		BY

DATE: 11/3/14
 SCALE: N.T.S.
 DWG. BY: JK
 CHK. BY: LFS
 DRAWING NO.: TX-4511
 SHEET 3 OF 9



Documents Prepared By: Lyndon F. Schmidt, P.E.
TEXAS P.E. #104123

RW BUILDING CONSULTANTS, INC.
P.O. Box 230 Vairico FL, 33595
Phone No.: 813.659.9197

TEXAS BOARD OF PROFESSIONAL ENGINEERS
CERTIFICATE OF REGISTRATION # F-11852

PRODUCT: TAYLOR DOOR
STEEL DOOR

PART OR ASSEMBLY:
ELEVATIONS

NO.	DATE	DESCRIPTION	LFS	BY
1	8/18/20	UPDATE TO 2018 IBC/IRC CODE	LFS	BY

DATE: 11/3/14

SCALE: N.T.S.

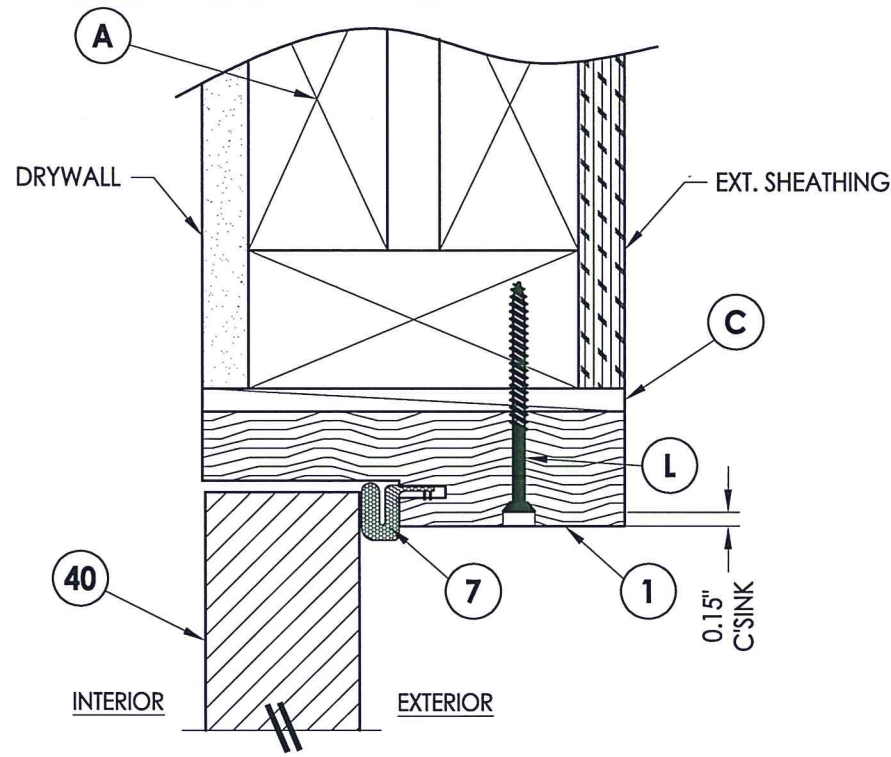
DWG. BY: JK

CHK. BY: LFS

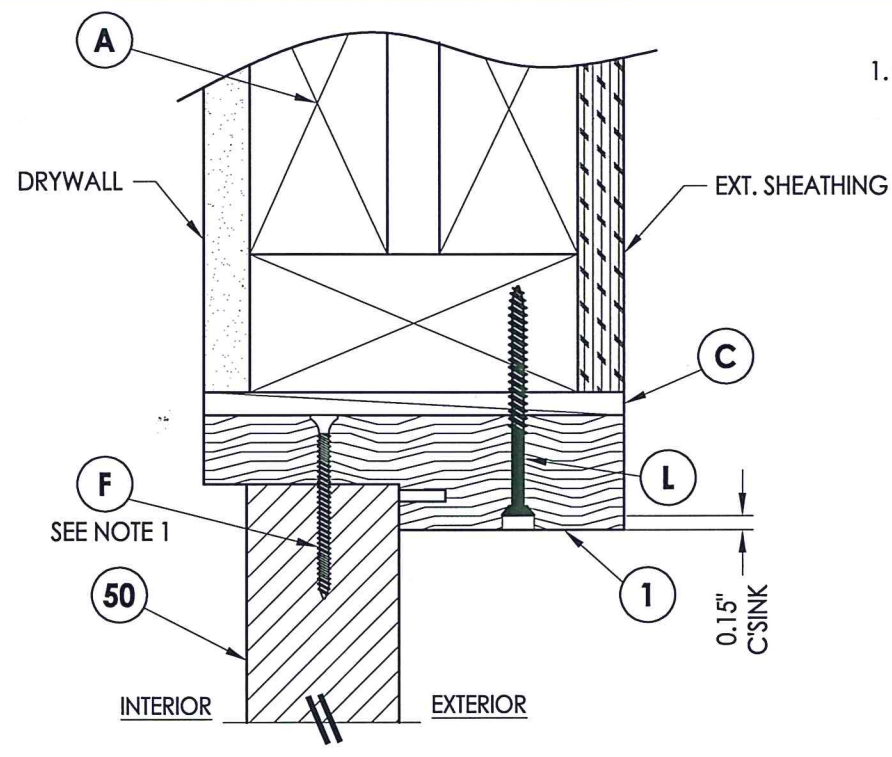
DRAWING NO.: TX-4511

SHEET 4 OF 9

R:\Clients\Taylor Permanent\B - Texas Dept of Ins\TDI - DR 735 68 & 80 Opaque Steel Doors Impact\Drawings\TX-4508-11.dwg, 5.4

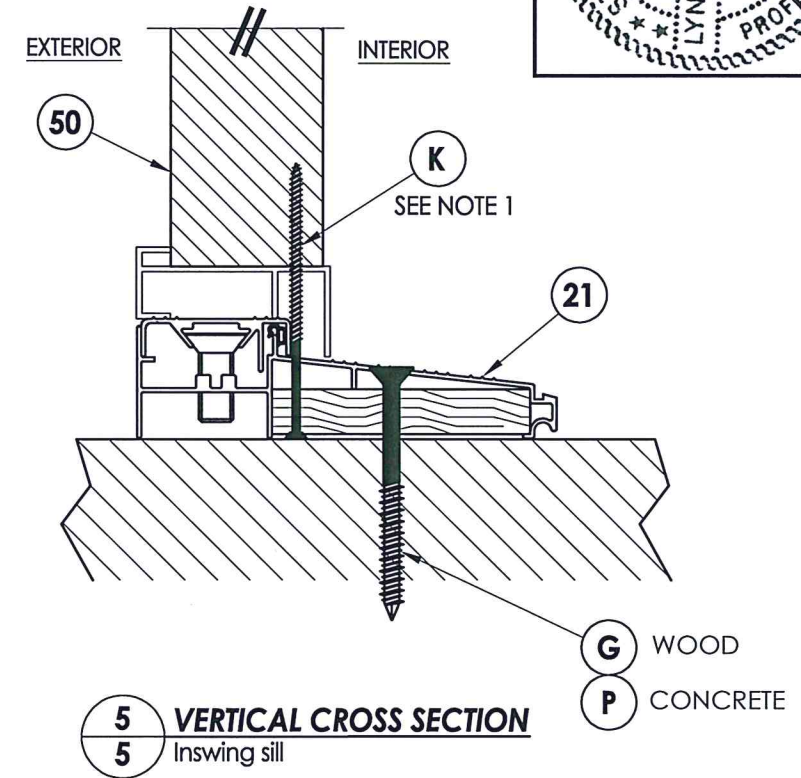


1 VERTICAL CROSS SECTION
5 Inswing shown (Outswing similar)



2 VERTICAL CROSS SECTION
5 Inswing shown (Outswing similar)

NOTE:
 1. Spacing for item F or K @ head & sill: 6" from each end plus 1 @ centerline (3 total).

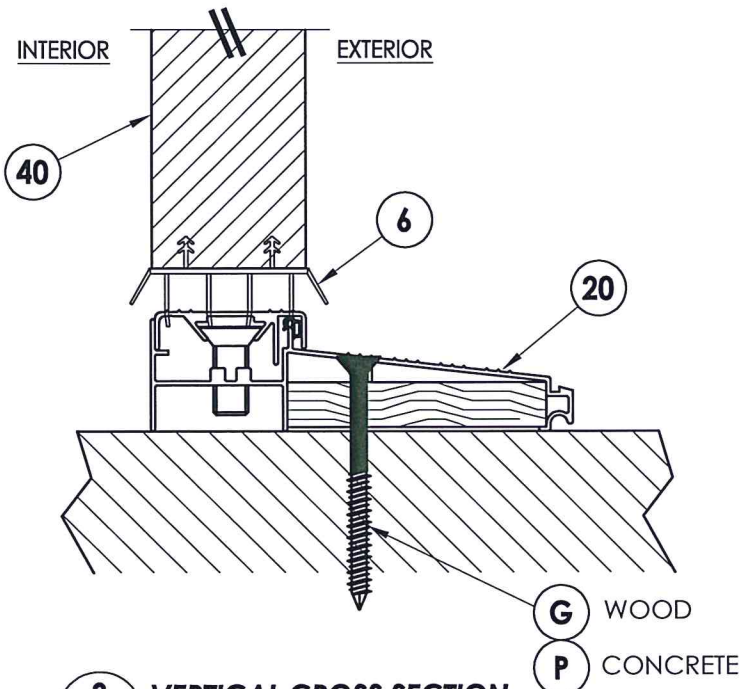


5 VERTICAL CROSS SECTION
5 Inswing sill

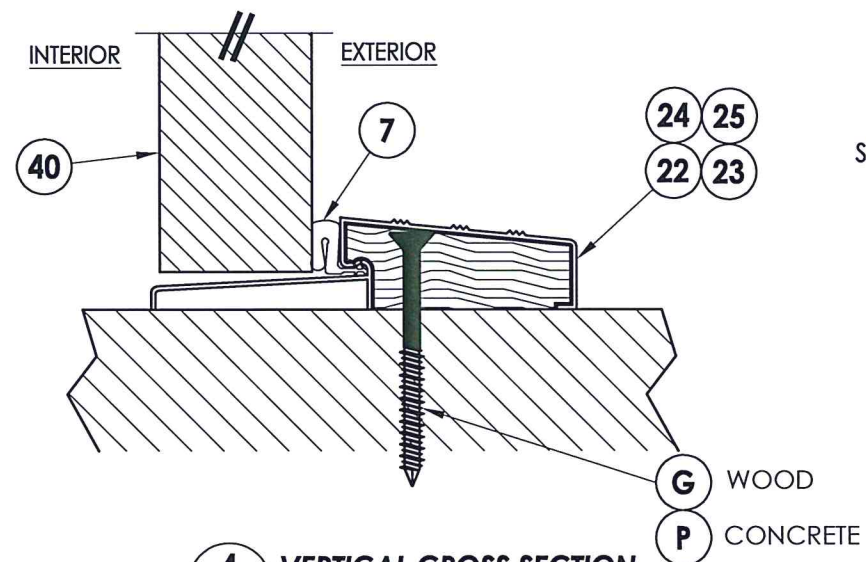


Documents Prepared By: Lyndon F. Schmidt, P.E.
 TEXAS P.E. #104123

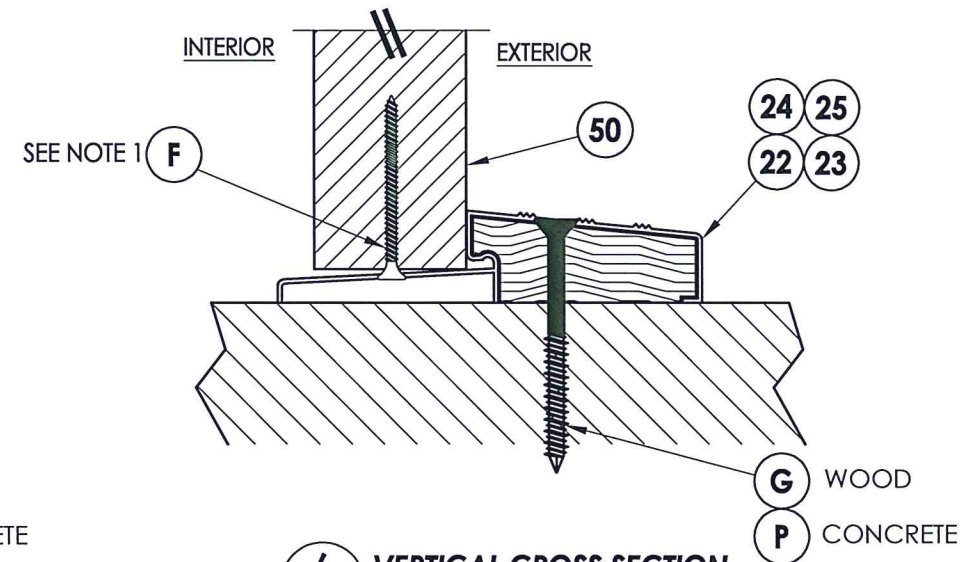
RW BUILDING CONSULTANTS, INC.
 P.O. Box 230 Valrico FL 33595
 Phone No.: 813.659.9197
 TEXAS BOARD OF PROFESSIONAL ENGINEERS
 CERTIFICATE OF REGISTRATION # F-11852



3 VERTICAL CROSS SECTION
5 Inswing sill



4 VERTICAL CROSS SECTION
5 Outswing sill



6 VERTICAL CROSS SECTION
5 Outswing sill

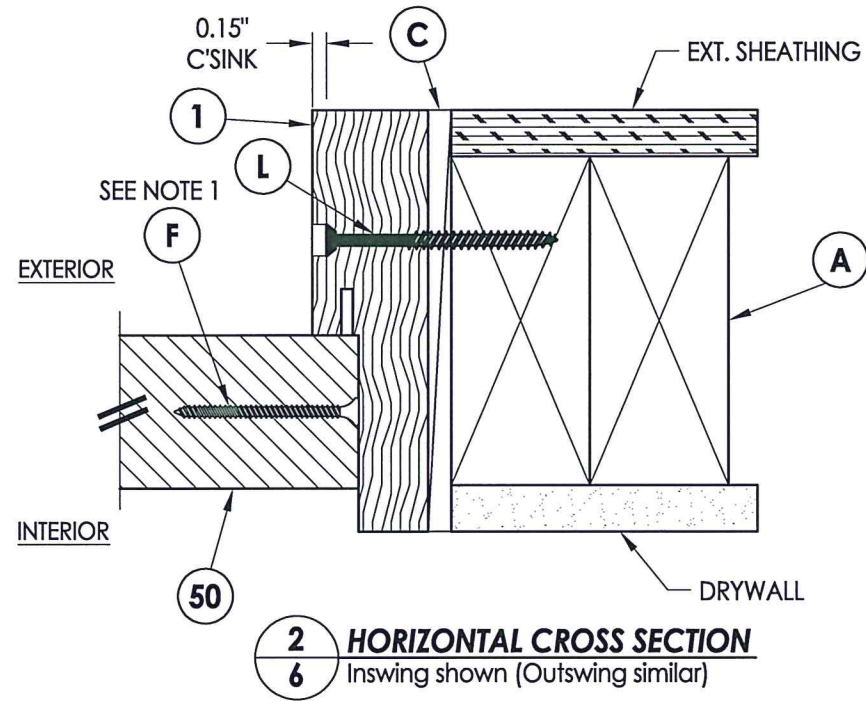
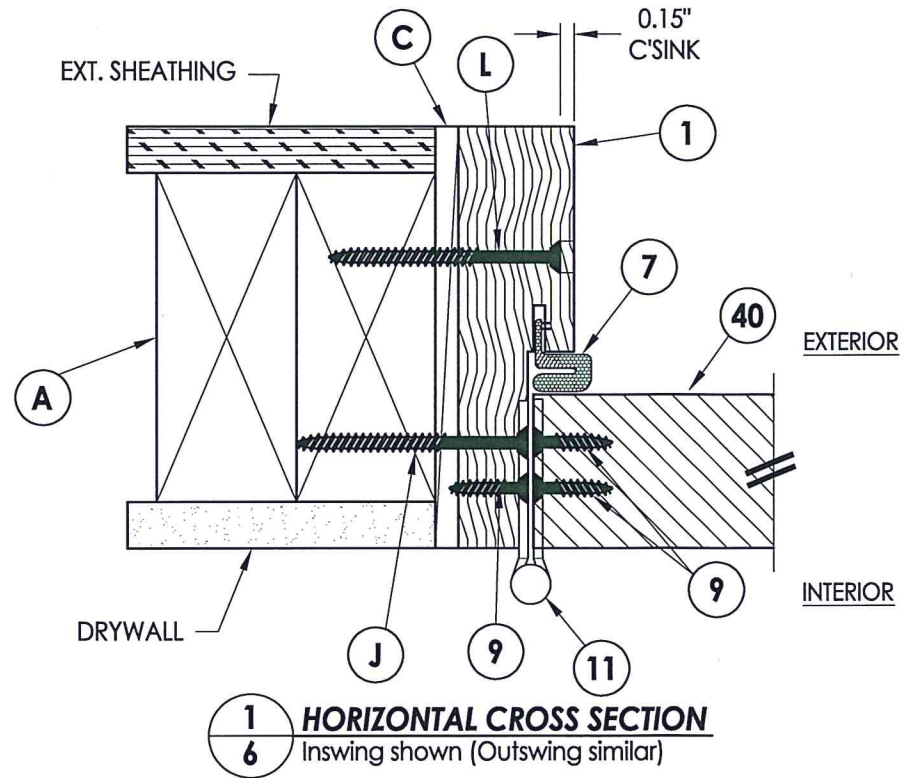
PRODUCT: TAYLOR DOOR
 STEEL DOOR
 PART OR ASSEMBLY: VERTICAL CROSS
 SECTIONS

NO.	DATE	DESCRIPTION	BY
1	8/18/20	UPDATE TO 2018 IBC/IRC CODE	LFS

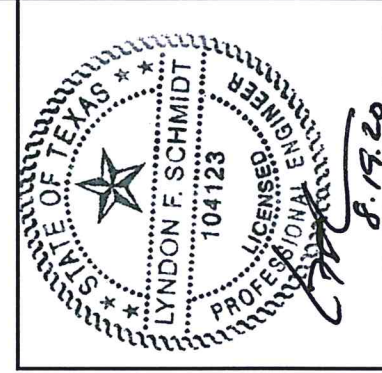
DATE: 11/3/14
 SCALE: N.T.S.
 DWG. BY: JK
 CHK. BY: LFS
 DRAWING NO.: TX-4511
 SHEET 5 OF 9

© 2014 R.W. BUILDING CONSULTANTS INC.

R:\Clients\Taylor Permanent\B - Texas Dept of Ins\TDI - DR 735 6'8 & 8'0 Opaque Steel Doors Impact\Drawings\TX-4508-11.dwg, 6.4



NOTE:
1. Spacing for item F: 6" from each end and 6 more equally spaced along sidelite jamb (8 total).



Documents Prepared By: Lyndon F. Schmidt, P.E.
TEXAS P.E. #104123

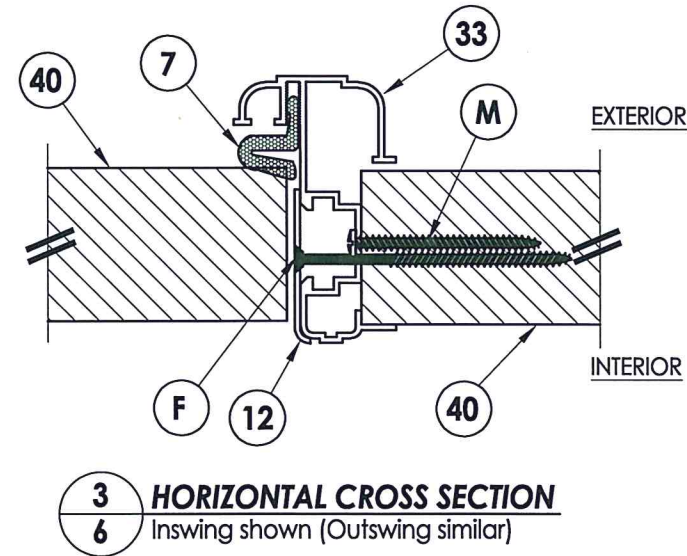
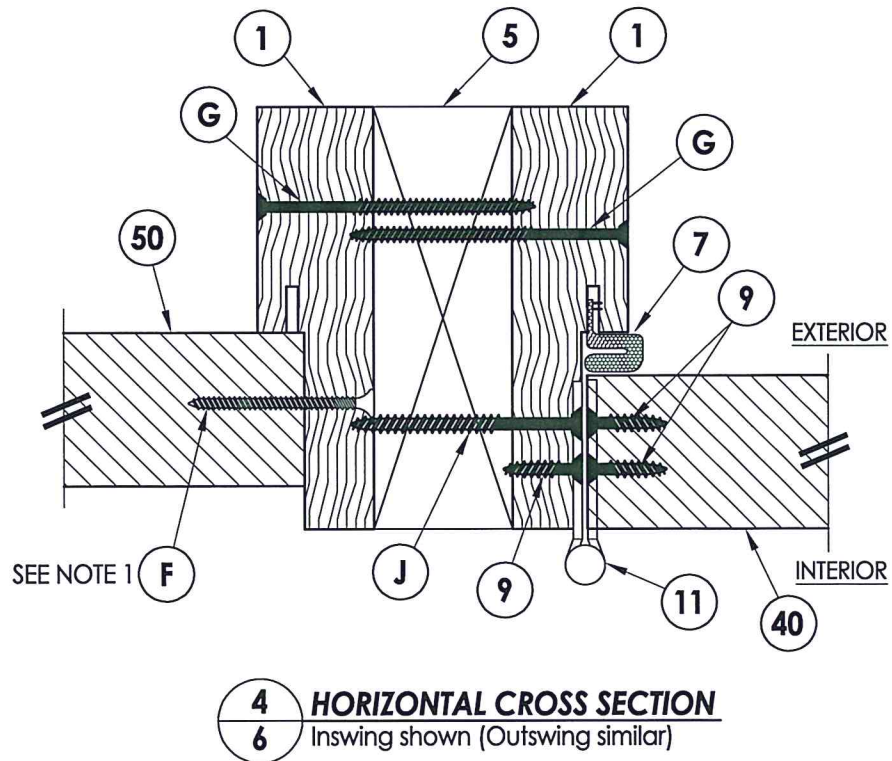
RW BUILDING CONSULTANTS, INC.
P.O. Box 230 Varico FL 33595
Phone No.: 813.659.9197
TEXAS BOARD OF PROFESSIONAL ENGINEERS
CERTIFICATE OF REGISTRATION # F-11852

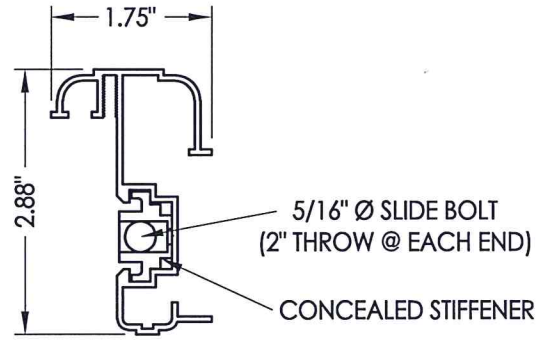
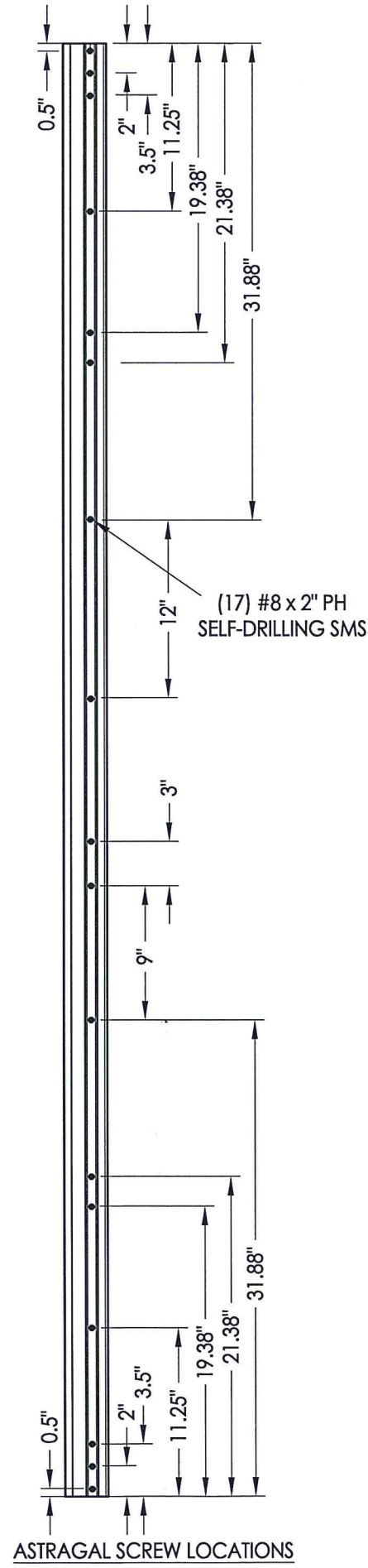
PRODUCT: TAYLOR DOOR STEEL DOOR
PART OR ASSEMBLY: HORIZONTAL CROSS SECTIONS

NO.	DATE	REVISIONS
1	8/18/20	UPDATE TO 2018 IBC/IRC CODE
		LFS
		BY

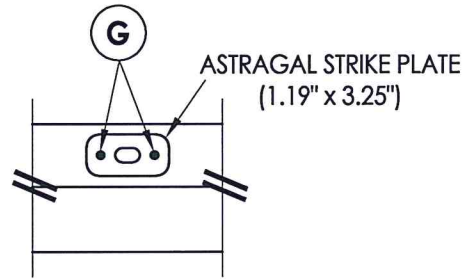
DATE: 11/3/14
SCALE: N.T.S.
DWG. BY: JK
CHK. BY: LFS
DRAWING NO.: TX-4511
SHEET 6 of 9

© 2014 R.W. BUILDING CONSULTANTS INC.

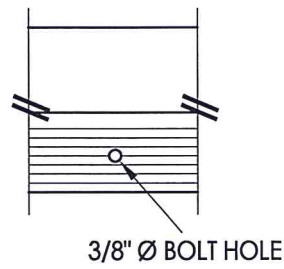




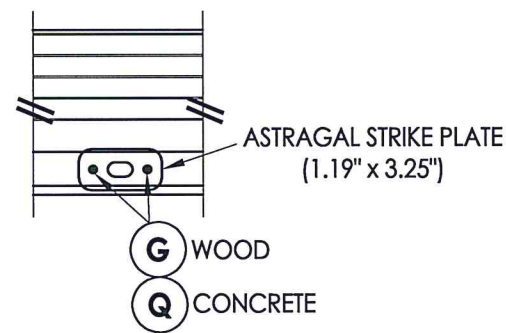
33 ASTRAGAL DLP



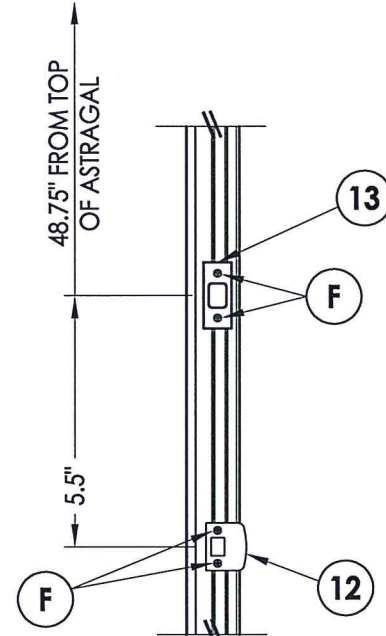
ASTRAGAL BOLT DETAIL
Strike Plate @ Head



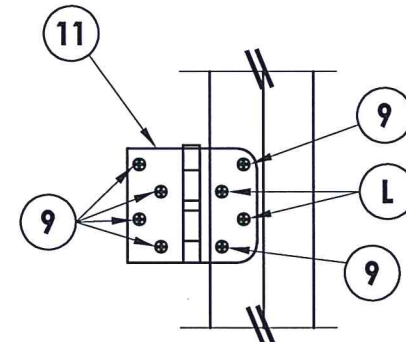
ASTRAGAL BOLT DETAIL
Outswing Threshold



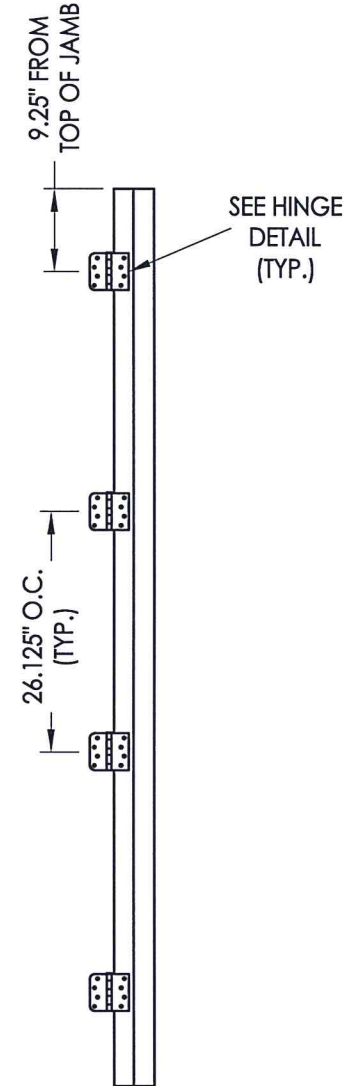
ASTRAGAL BOLT DETAIL
Inswing Threshold



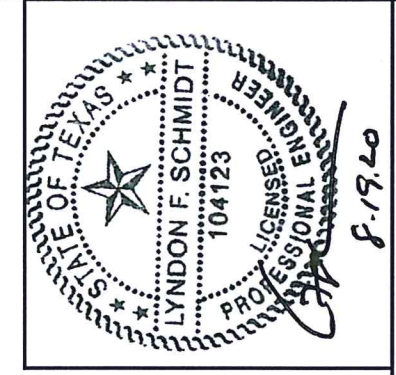
LATCH AND DEADBOLT DETAILS



HINGE DETAIL



HINGE JAMB



Documents Prepared By: Lyndon F. Schmidt, P.E.
TEXAS P.E. #104123

RW BUILDING CONSULTANTS, INC.
P.O. Box 230 Valrico FL 33595
Phone No.: 813.659.9197

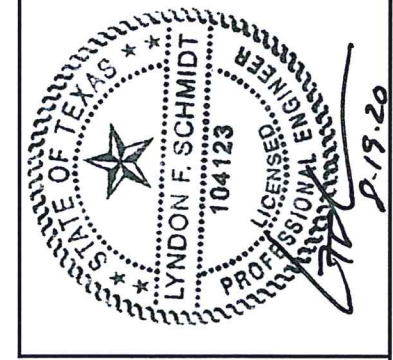
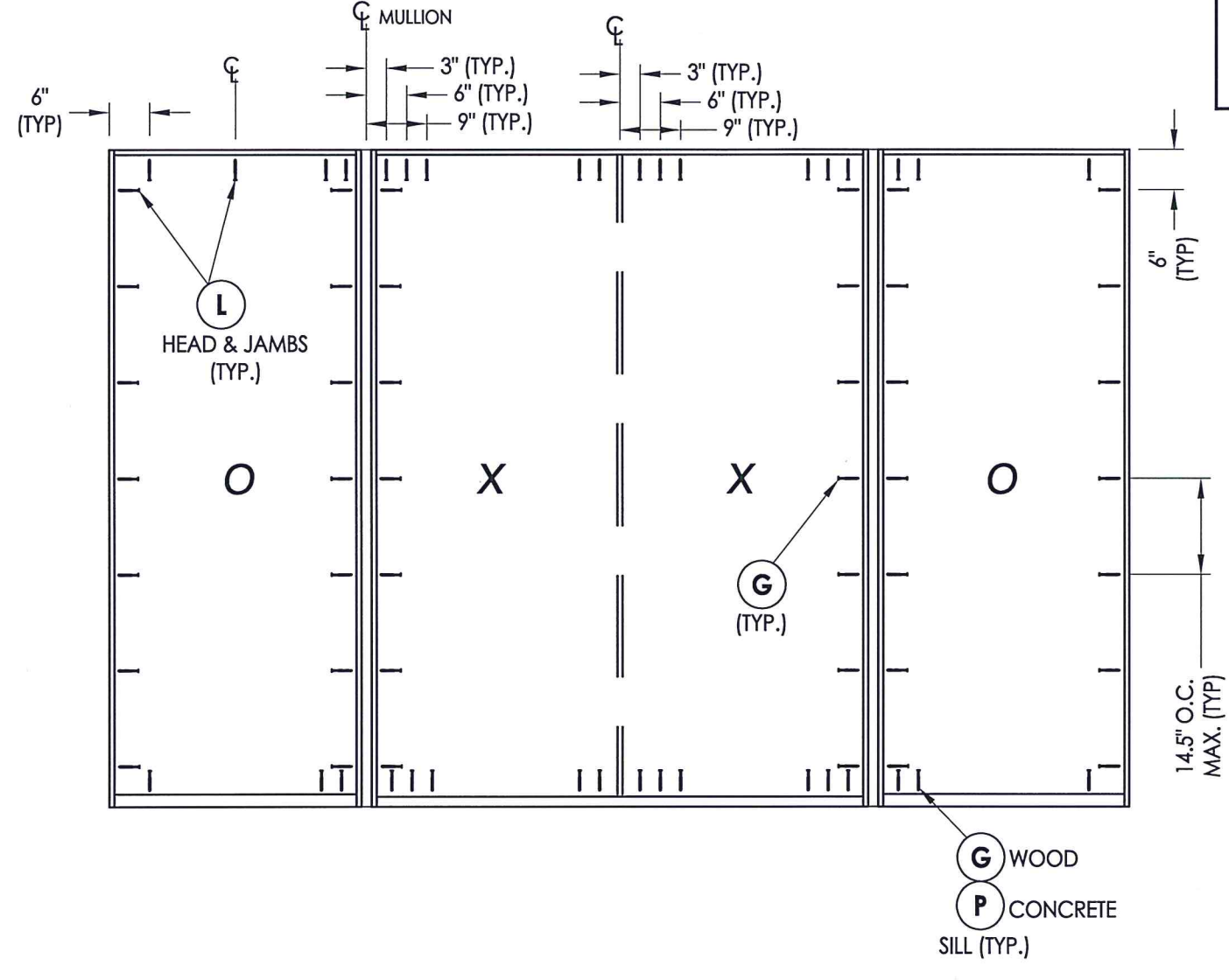
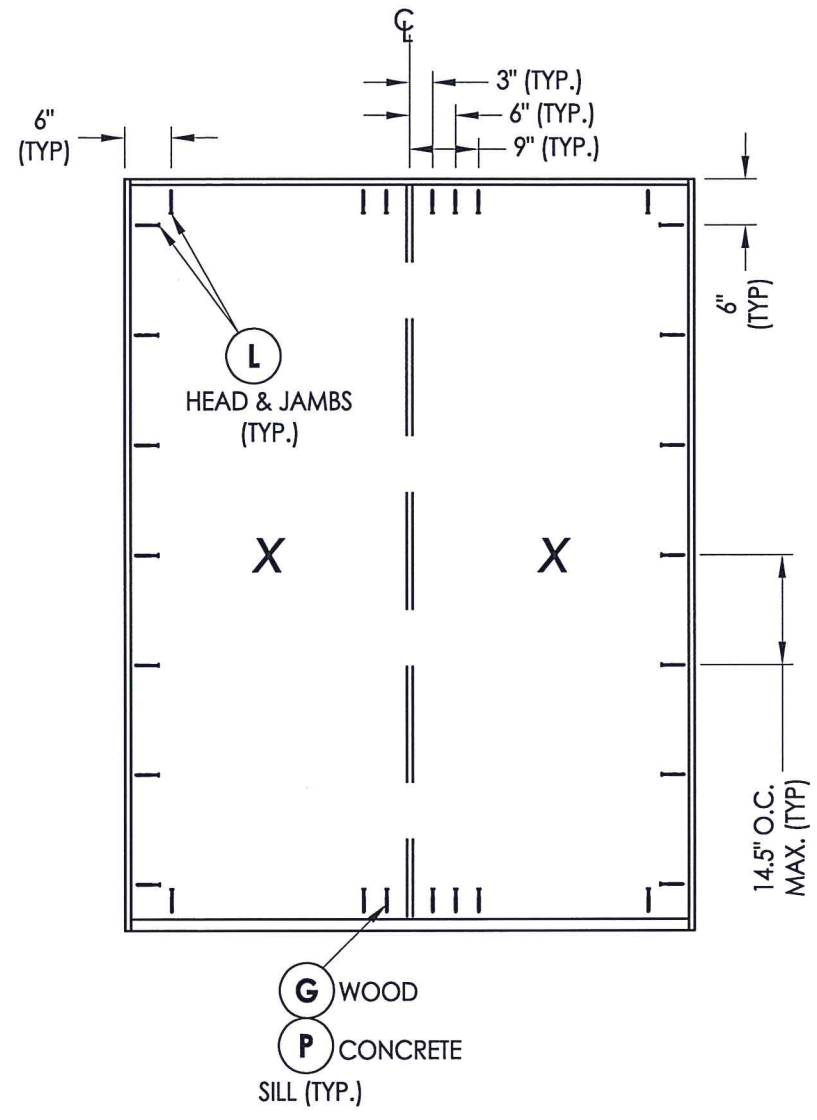
TEXAS BOARD OF PROFESSIONAL ENGINEERS
CERTIFICATE OF REGISTRATION # F-11852

PRODUCT:	TAYLOR DOOR STEEL DOOR
PART OR ASSEMBLY:	HARDWARE DETAILS

NO.	DATE	REVISIONS
1	8/18/20	UPDATE TO 2018 IBC/IRC CODE
		LFS
		BY

DATE:	11/3/14
SCALE:	N.T.S.
DWG. BY:	JK
CHK. BY:	LFS
DRAWING NO.:	TX-4511
SHEET	7 OF 9

R:\Clients\Taylor Permanent\B - Texas Dept of Ins\TDI - DR 735 6'8 & 8'0 Opaque Steel Doors Impact\Drawings\TX-4508-11.dwg, 8.4



Documents Prepared By: Lyndon F. Schmidt, P.E.
 TEXAS P.E. #104123
RW BUILDING CONSULTANTS, INC.
 P.O. Box 230 Valrico FL 33595
 Phone No.: 813.659.9197
 TEXAS BOARD OF PROFESSIONAL ENGINEERS
 CERTIFICATE OF REGISTRATION # F-11852

PRODUCT: TAYLOR DOOR STEEL DOOR
 PART OR ASSEMBLY: FRAME ANCHORING

NO.	DATE	DESCRIPTION	BY
1	8/18/20	UPDATE TO 2018 IBC/IRC CODE	LFS

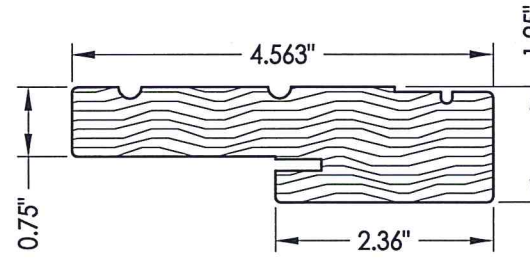
DATE: 11/3/14
 SCALE: N.T.S.
 DWG. BY: JK
 CHK. BY: LFS
 DRAWING NO.: TX-4511
 SHEET 8 OF 9

FRAME ANCHORING
 2X stud framing
 w/ wood/concrete substrate

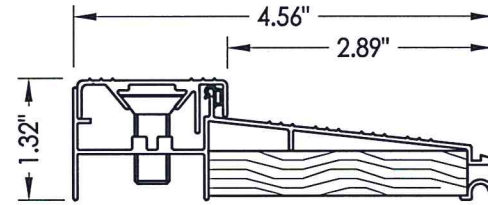
R:\Clients\Taylor Permanent\B - Texas Dept of Ins\TDI - DR 735 6'8 & 8'0 Opaque Steel Doors Impact\Drawings\TX-4508-11.dwg, 9.4

BILL OF MATERIALS

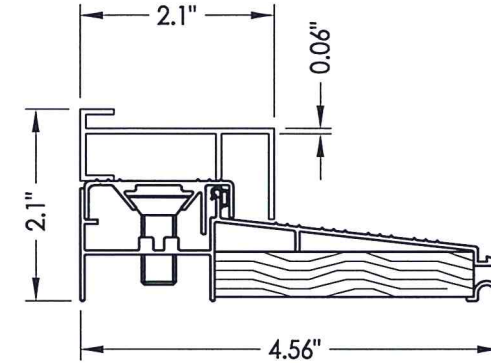
ITEM #	DESCRIPTION	MATERIAL
A	2X FRAMING (SG >= 0.42)	WOOD
C	1/4" MAX. SHIM SPACE	-
F	#7 X 2" PFH DRYWALL SCREW	STEEL
G	#10 X 3" PFH WOOD SCREW (1-1/2" MIN. EMB.)	STEEL
J	#10 X 2-1/2" PFH WOOD SCREW	STEEL
K	#6 X 3" PFH WOOD SCREW	STEEL
L	#10 X 2-1/2" PFH WOOD SCREW (1.15" MIN. EMB.)	STEEL
M	#8 X 2" PH SMS	STEEL
P	1/4" PFH CONCRETE SCREW (1-3/4" MIN. EMB.)	STEEL
1	WOOD JAMB (FINGER-JOINT PINE)	WOOD
5	2X MULLION (SG >= 0.55)	WOOD
6	SWEEP	PVC
7	WEATHERSTRIP	FOAM
9	#10 x 3/4" PFH WOOD SCREW	STEEL
11	4" X 4" HINGE	STEEL
12	LATCH STRIKE PLATE	STEEL
13	DEADBOLT STRIKE PLATE	STEEL
20	INSWING THRESHOLD	ALUM/WOOD
21	INSWING THRESHOLD w/ SIDELITE ADAPTER	ALUM/WOOD
22	OUTSWING THRESHOLD	ALUM/WOOD
23	OUTSWING THRESHOLD	ALUM/WOOD
24	OUTSWING THRESHOLD	ALUM/WOOD
25	OUTSWING THRESHOLD	ALUM
33	ASTRAGAL (DLP)	ALUM
40	DOOR PANEL	-
50	SIDELITE PANEL	-



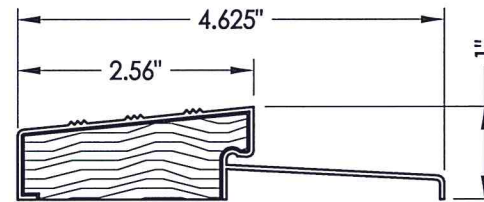
1 WOOD JAMB



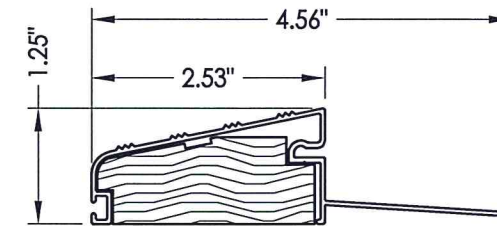
20 INSWING THRESHOLD DLP



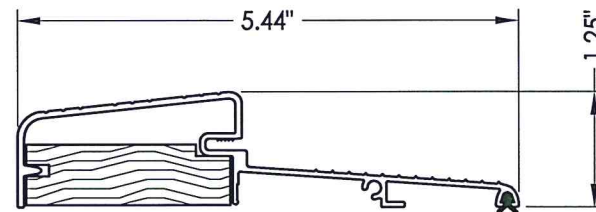
21 INSWING THRESHOLD w/ SIDELITE ADAPTER DLP



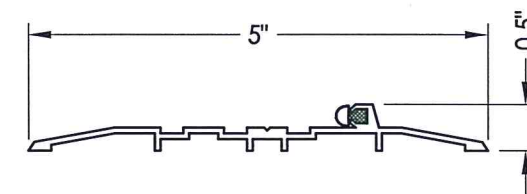
22 OUTSWING THRESHOLD DLP (QOS)



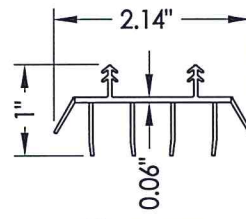
23 OUTSWING THRESHOLD DLP (QOSH)



24 OUTSWING THRESHOLD Combo



25 OUTSWING THRESHOLD DLP (OSHC)

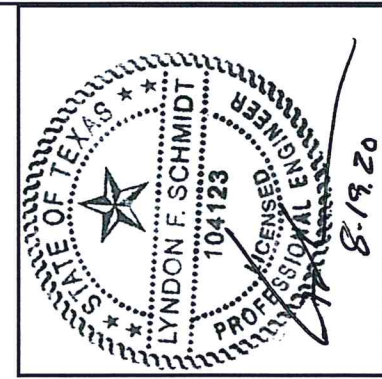


6 SWEEP

CONCRETE ANCHOR NOTES:

- Concrete anchor locations at the corners may be adjusted to maintain the min. edge distance to mortar joints.
- Concrete anchor locations noted as "MAX. ON CENTER" must be adjusted to maintain the min. edge distance to mortar joints, additional concrete anchors may be required to ensure the "MAX. ON CENTER" dimension are not exceeded.
- Concrete anchor table:

ANCHOR TYPE	ANCHOR SIZE	MIN. EMBEDMENT	MIN. CLEARANCE TO MASONRY EDGE	MIN. CLEARANCE TO ADJACENT ANCHOR
ITW TAPCON®	3/16"	1-3/4"	3"	1-1/2"
	1/4"	1-3/4"	1-1/2"	4"
DeWALT ULTRACON®	1/4"	1-3/4"	1"	4"



Documents Prepared By: Lyndon F. Schmidt, P.E.
TEXAS P.E. #104123

RW BUILDING CONSULTANTS, INC.
P.O. Box 230 Valrico FL, 33595
Phone No.: 813.659.9197
TEXAS BOARD OF PROFESSIONAL ENGINEERS
CERTIFICATE OF REGISTRATION # F-11852

PRODUCT: TAYLOR DOOR
STEEL DOOR

PART OR ASSEMBLY:
BILL OF MATERIALS
& COMPONENTS

NO.	DATE	DESCRIPTION	LFS	BY
1	8/18/20	UPDATE TO 2018 IBC/IRC CODE		

DATE: 11/3/14

SCALE: N.T.S.

DWG. BY: JK

CHK. BY: LFS

DRAWING NO.: TX-4511

SHEET 9 OF 9