

Documents Prepared By: Lyndon F. Schmidt, P.E.  
TEXAS P.E. #104123

**RW** BUILDING CONSULTANTS, INC.  
P.O. Box 230 Valrico FL 33595  
Phone No.: 813.659.9197

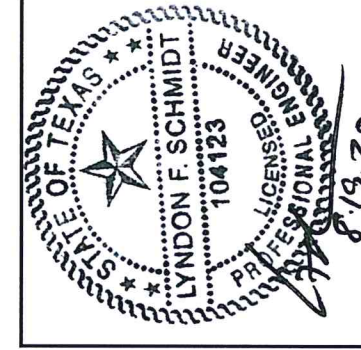
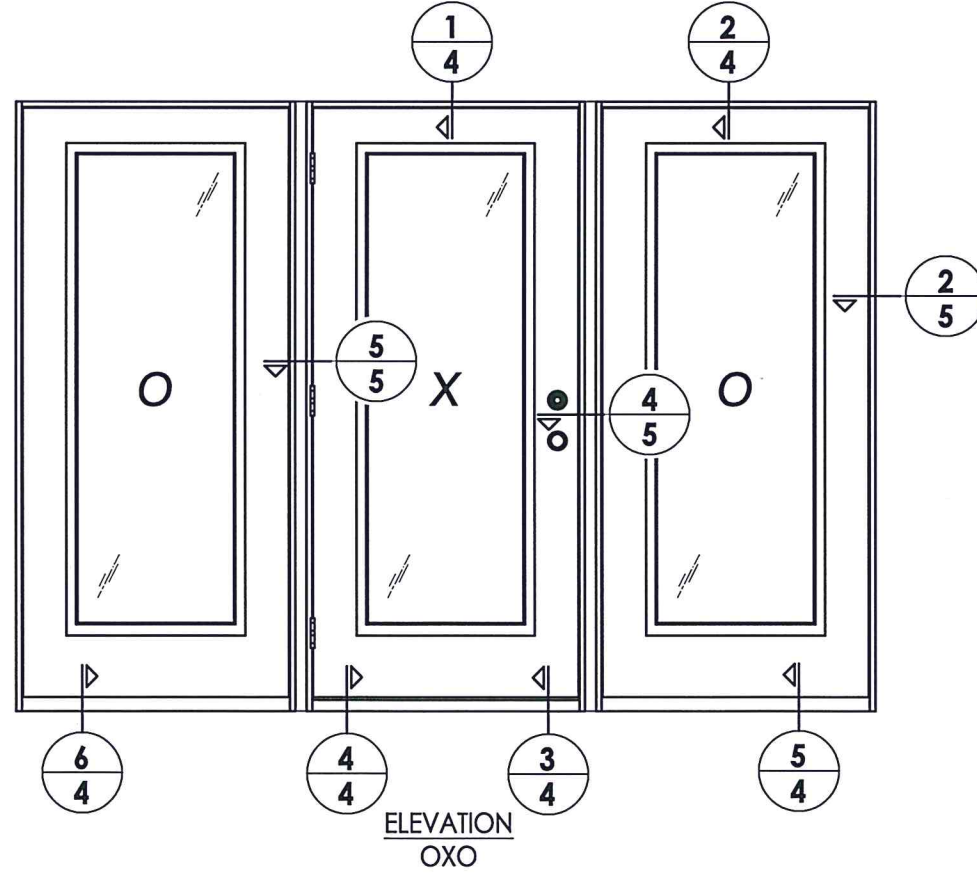
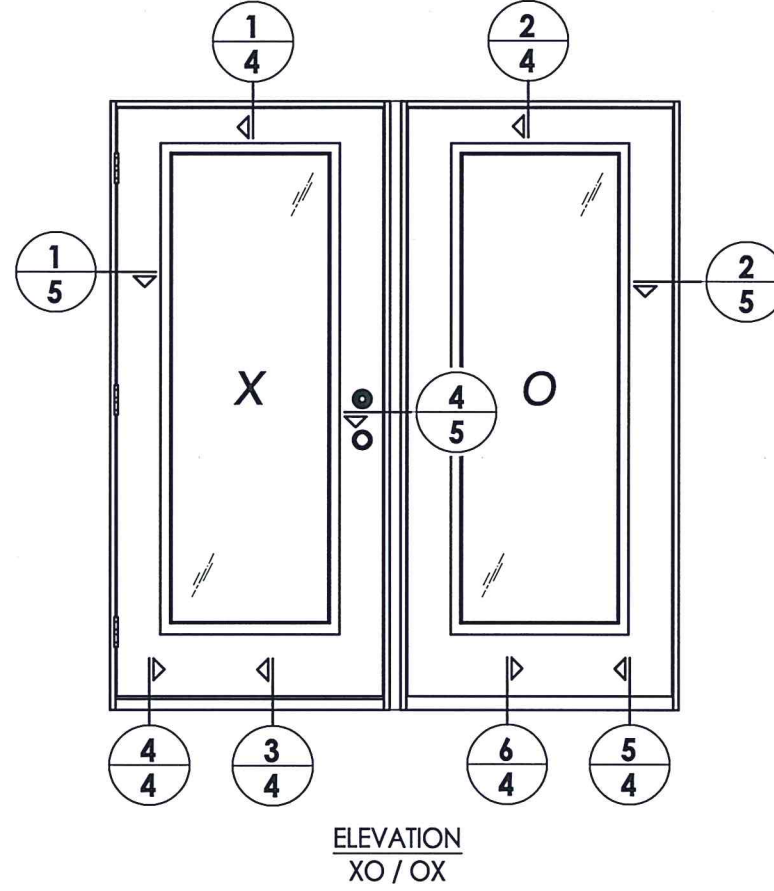
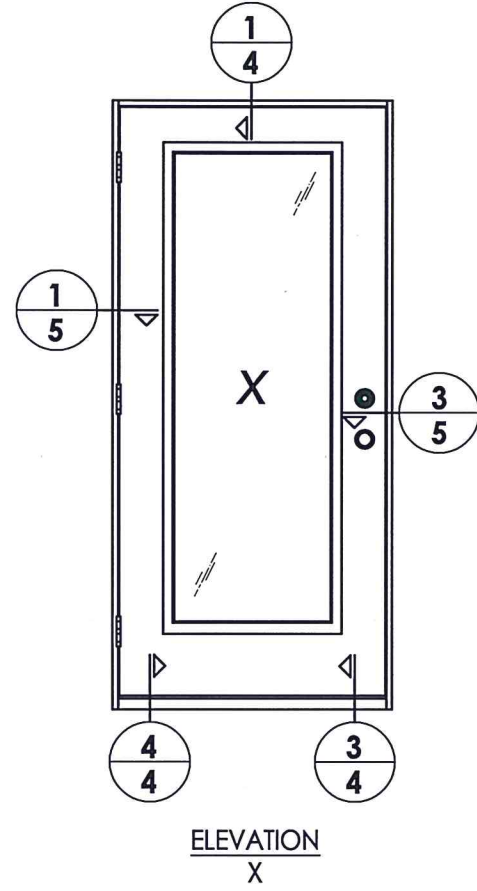
TEXAS BOARD OF PROFESSIONAL ENGINEERS  
CERTIFICATE OF REGISTRATION # F-11852

- 40** TAYLOR DOOR PANEL
- 50** TAYLOR SIDELITE PANEL

DOOR SKIN: 0.022" MIN. THK. STEEL  
CORE MATERIAL: POLYURETHANE FOAM

HARDWARE CHART	
MANUFACTURER	MODEL
YALE	KNOB: NEW TRADITIONS DEADBOLT: NEW TRADITIONS (800 SERIES)
SCHLAGE	KNOB/LEVER: "F" SERIES DEADBOLT: B60/62

PRODUCT:	TAYLOR DOOR STEEL DOOR	
PART OR ASSEMBLY:	DOOR & SIDELITE PANEL DETAILS	
NO.	DATE	BY
1	7/18/20	LFS
UPDATE TO 2018 IBC/IRC CODE		
REVISIONS		
DATE:	11/3/14	
SCALE:	N.T.S.	
DWG. BY:	JK	
CHK. BY:	LFS	
DRAWING NO.:	TX-4495	
SHEET	2	OF 7



Documents Prepared By: Lyndon F. Schmidt, P.E.  
TEXAS P.E. #104123

**RW** BUILDING CONSULTANTS, INC.  
P.O. Box 230 Valrico FL 33595  
Phone No.: 813.659.9197

TEXAS BOARD OF PROFESSIONAL ENGINEERS  
CERTIFICATE OF REGISTRATION # F-11852

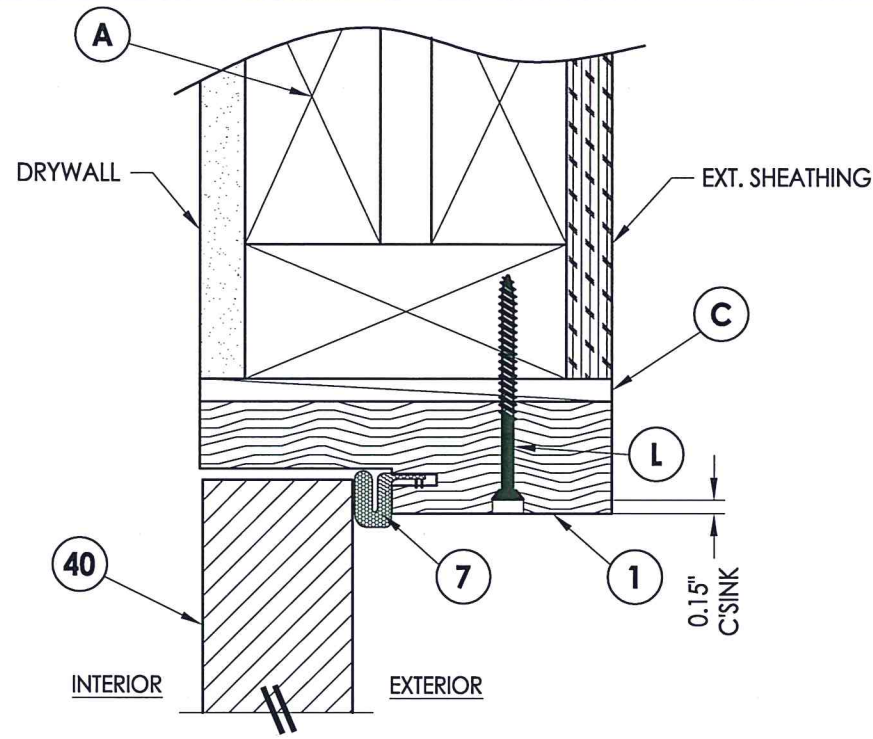
PRODUCT: TAYLOR DOOR  
STEEL DOOR

PART OR ASSEMBLY:  
ELEVATIONS

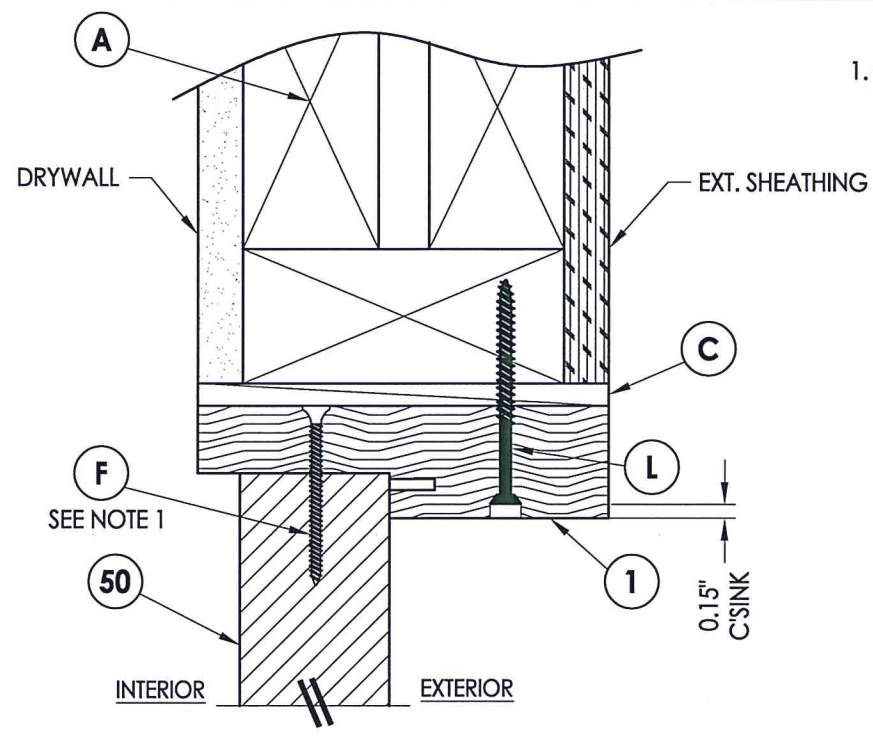
NO.	DATE	DESCRIPTION	LFS	BY
1	7/18/20	UPDATE TO 2018 IBC/IRC CODE	LFS	BY

DATE: 11/3/14  
SCALE: N.T.S.  
DWG. BY: JK  
CHK. BY: LFS  
DRAWING NO.: TX-4495  
SHEET 3 OF 7



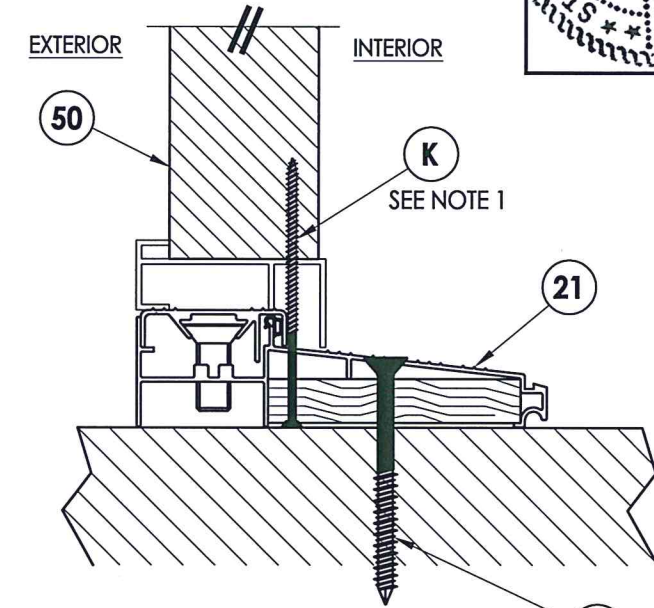
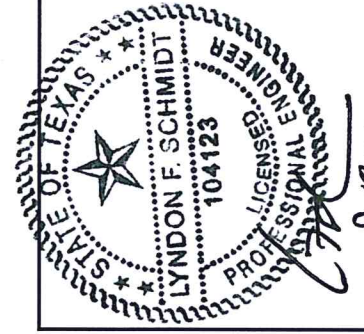


**1** VERTICAL CROSS SECTION  
**4** Inswing shown (Outswing similar)



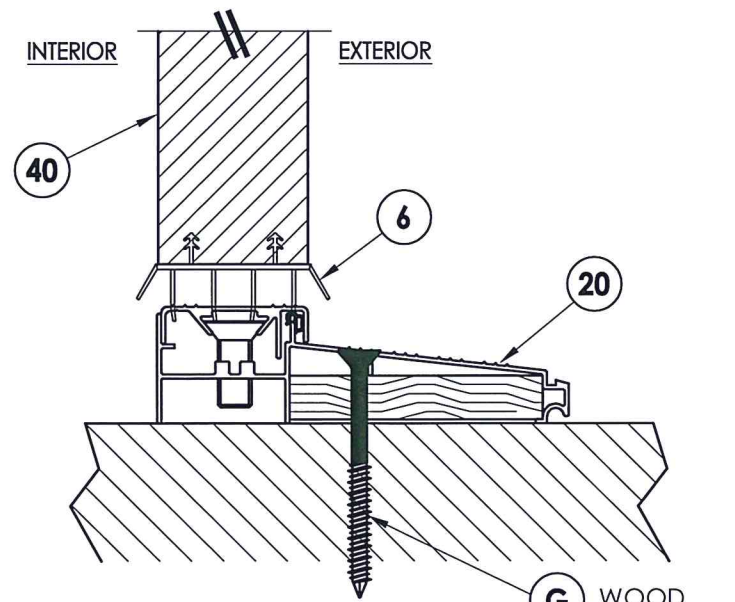
**2** VERTICAL CROSS SECTION  
**4** Inswing shown (Outswing similar)

NOTE:  
1. Spacing for item F or K @ head & sill: 6" from each end plus 1 @ centerline (3 total).



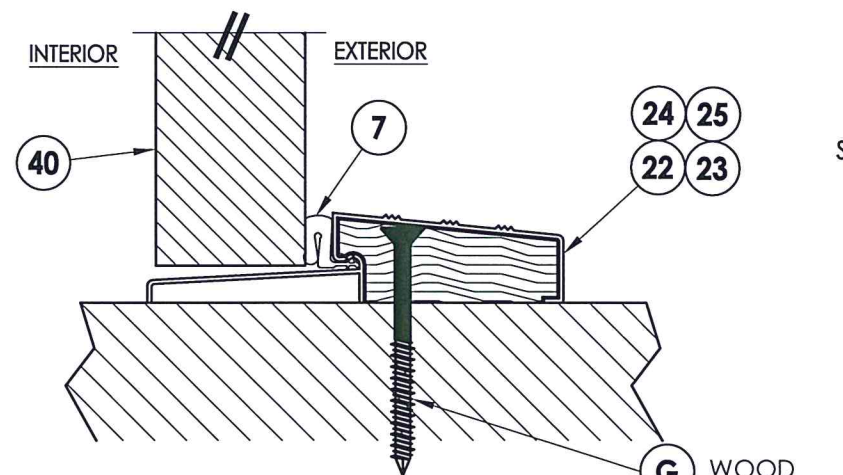
**5** VERTICAL CROSS SECTION  
**4** Inswing sill

**G** WOOD  
**P** CONCRETE



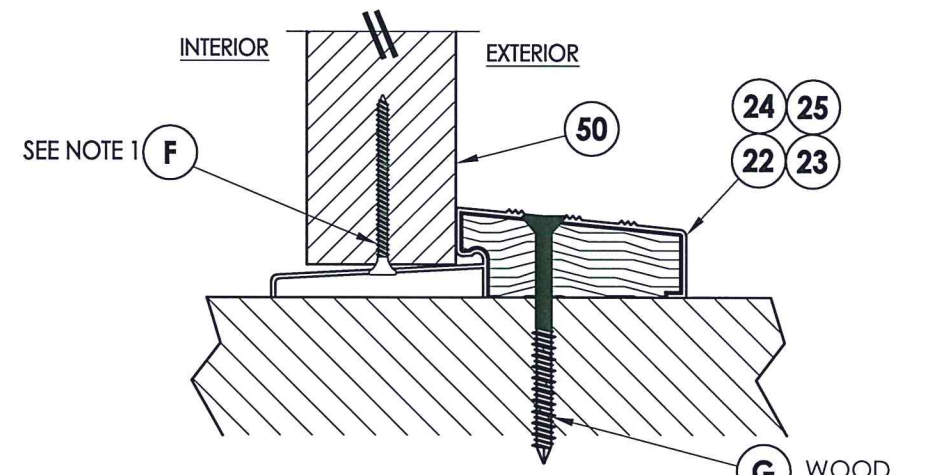
**3** VERTICAL CROSS SECTION  
**4** Inswing sill

**G** WOOD  
**P** CONCRETE



**4** VERTICAL CROSS SECTION  
**4** Outswing sill

**G** WOOD  
**P** CONCRETE



**6** VERTICAL CROSS SECTION  
**4** Outswing sill

**G** WOOD  
**P** CONCRETE

Documents Prepared By: Lyndon F. Schmidt, P.E.  
TEXAS P.E. #104123

**RW** BUILDING CONSULTANTS, INC.  
P.O. Box 230 Valrico FL 33595  
Phone No.: 813.659.9197  
TEXAS BOARD OF PROFESSIONAL ENGINEERS  
CERTIFICATE OF REGISTRATION # F-11852

PRODUCT: TAYLOR DOOR  
STEEL DOOR

PART OR ASSEMBLY:  
VERTICAL CROSS  
SECTIONS

NO.	DATE	REVISIONS	LFS	BY
1	7/18/20	UPDATE TO 2018 IBC/IRC CODE		

DATE: 11/3/14

SCALE: N.T.S.

DWG. BY: JK

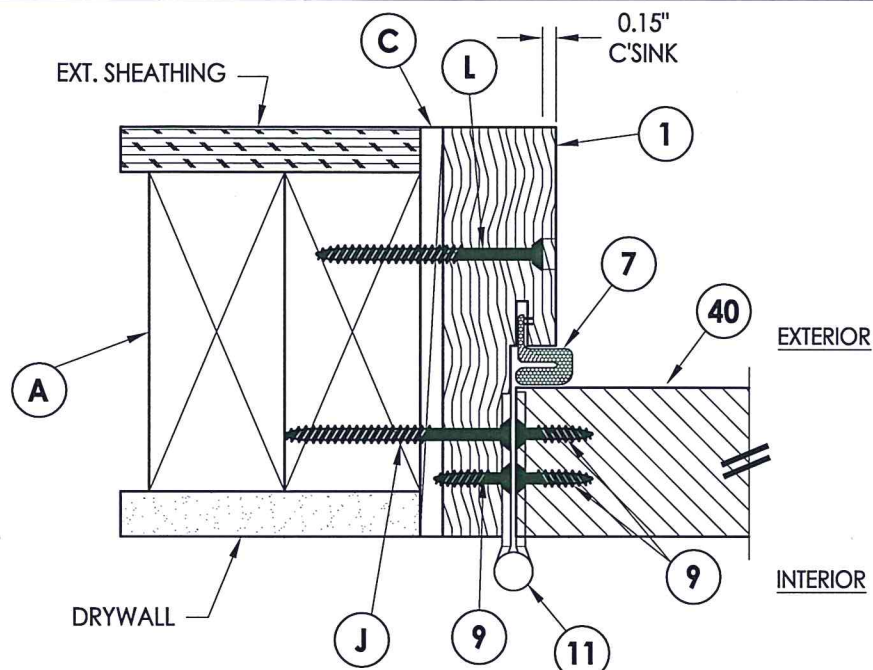
CHK. BY: LFS

DRAWING NO.:

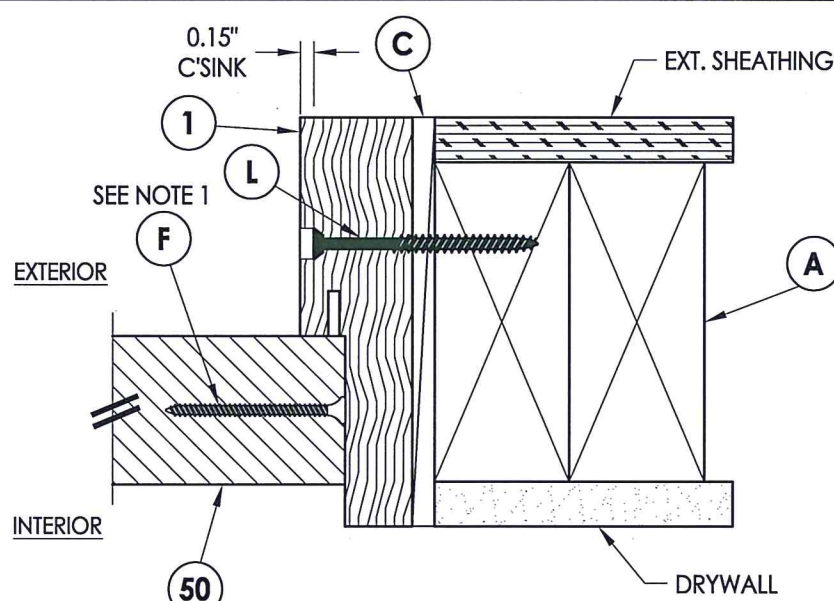
TX-4495

SHEET 4 OF 7

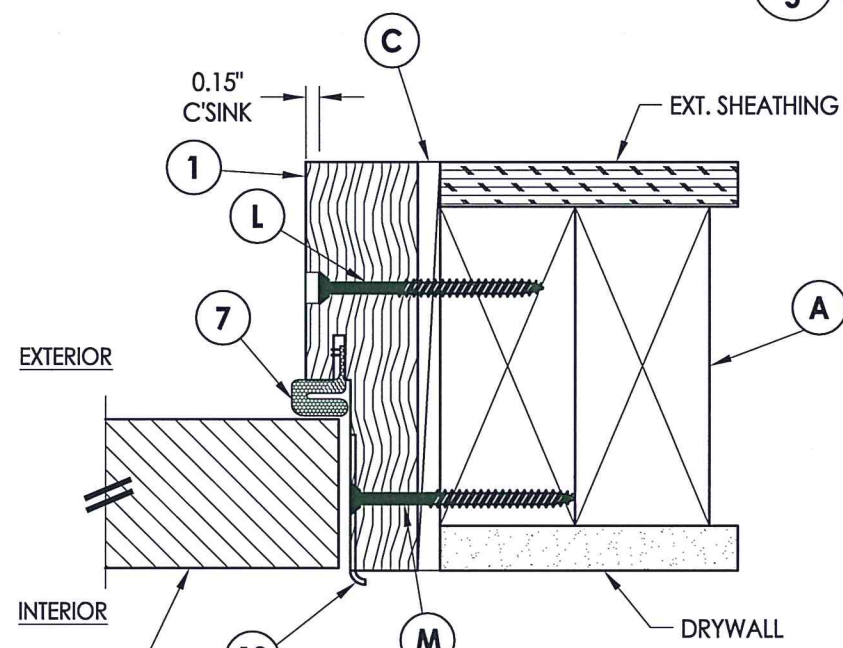




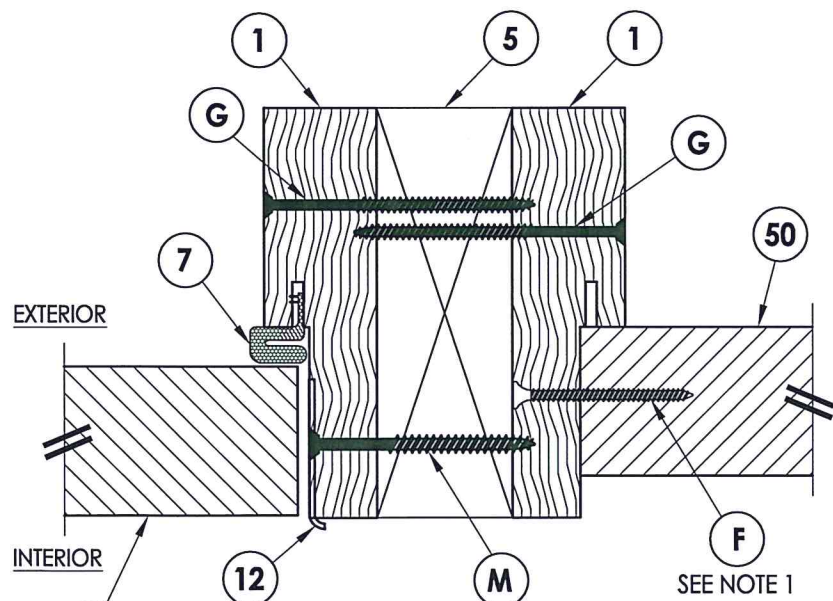
**1** HORIZONTAL CROSS SECTION  
**5** Inswing shown (Outswing similar)



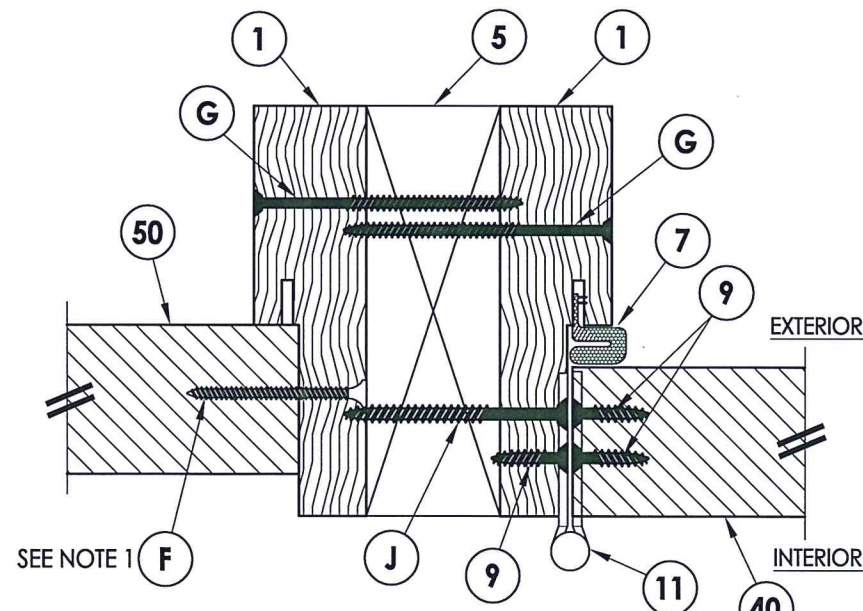
**2** HORIZONTAL CROSS SECTION  
**5** Inswing shown (Outswing similar)



**3** HORIZONTAL CROSS SECTION  
**5** Inswing shown (Outswing similar)



**4** HORIZONTAL CROSS SECTION  
**5** Inswing shown (Outswing similar)



**5** HORIZONTAL CROSS SECTION  
**5** Inswing shown (Outswing similar)



NOTE:  
 1. Spacing for item F: 6" from each end and 6 more equally spaced along sidelite jamb (8 total).

Documents Prepared By: Lyndon F. Schmidt, P.E.  
 TEXAS P.E. #104123

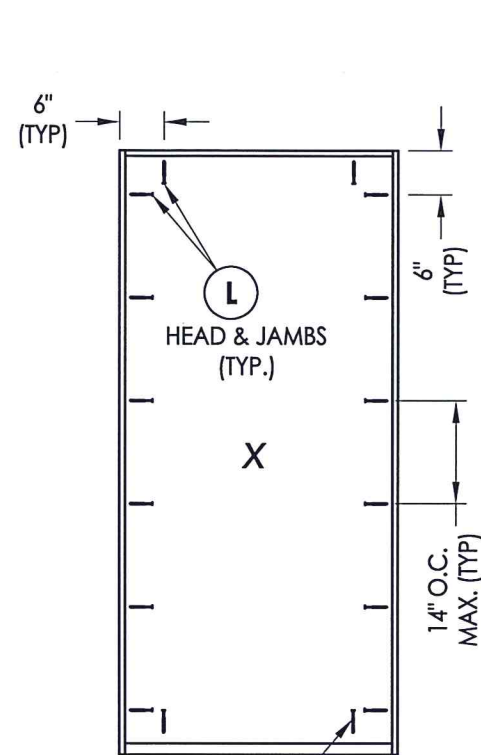
**RW** BUILDING CONSULTANTS, INC.  
 P.O. Box 230 Vairico FL, 33595  
 Phone No.: 813.659.9197  
 TEXAS BOARD OF PROFESSIONAL ENGINEERS  
 CERTIFICATE OF REGISTRATION # F-11852

PRODUCT: TAYLOR DOOR  
 STEEL DOOR  
 PART OR ASSEMBLY:  
 HORIZONTAL CROSS  
 SECTIONS

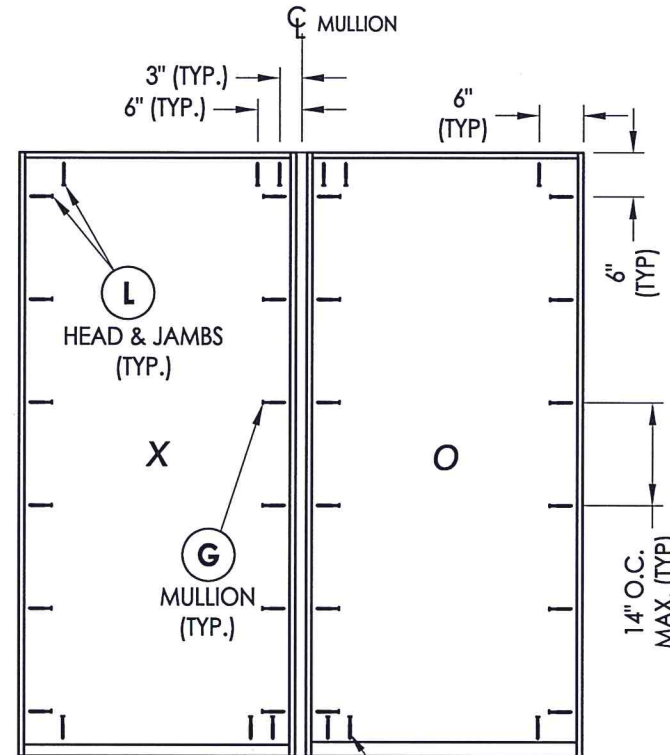
NO.	DATE	DESCRIPTION	LFS	BY
1	7/18/20	UPDATE TO 2018 IBC/IRC CODE		

DATE: 11/3/14  
 SCALE: N.T.S.  
 DWG. BY: JK  
 CHK. BY: LFS  
 DRAWING NO.: TX-4495  
 SHEET 5 OF 7

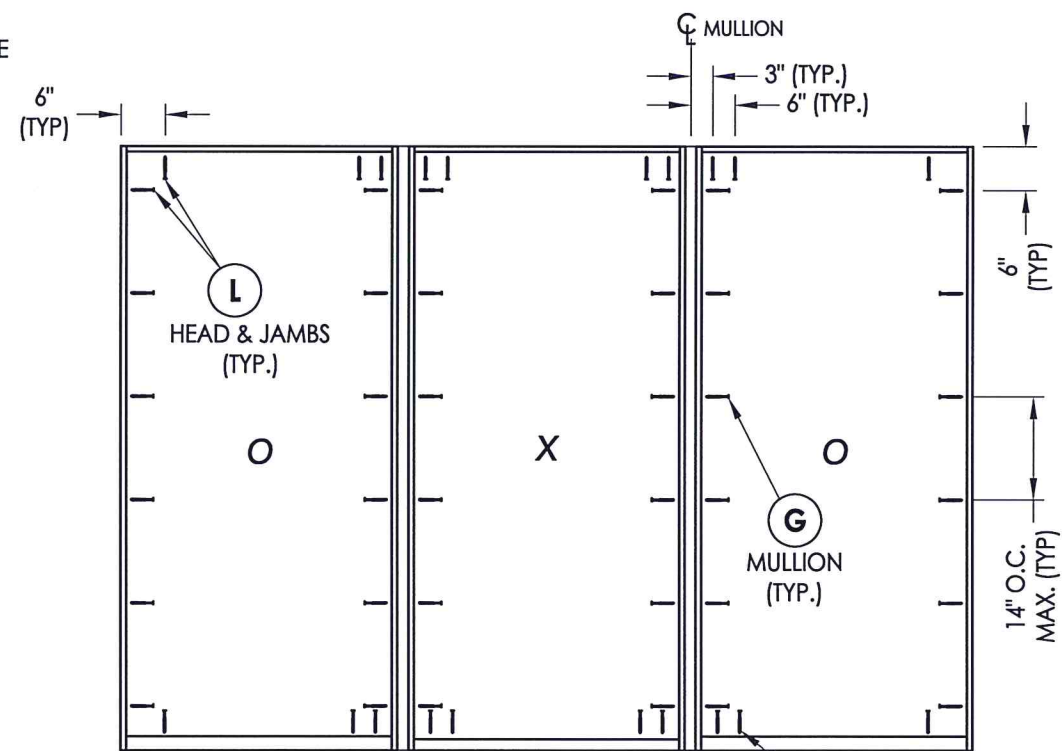




(G) WOOD  
(P) CONCRETE  
SILL (TYP.)



(G) WOOD  
(P) CONCRETE  
SILL (TYP.)



(G) WOOD  
(P) CONCRETE  
SILL (TYP.)

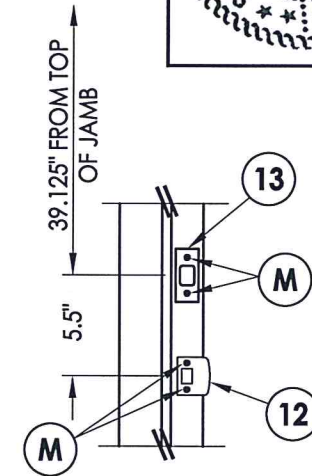
**FRAME ANCHORING**  
2X stud framing  
w/ wood/concrete substrate



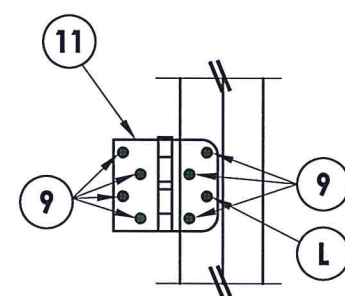
Documents Prepared By: Lyndon F. Schmidt, P.E.  
TEXAS P.E. #104123

**R.W.** BUILDING CONSULTANTS, INC.  
P.O. Box 230 Valrico FL 33595  
Phone No.: 813.659.9197

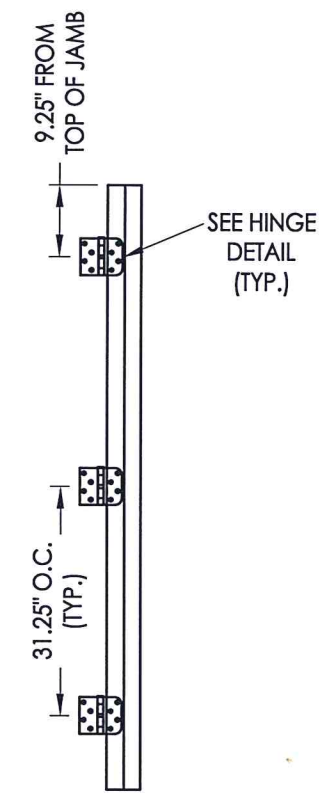
TEXAS BOARD OF PROFESSIONAL ENGINEERS  
CERTIFICATE OF REGISTRATION # F-11852



**LATCH AND DEADBOLT DETAILS**



**HINGE DETAIL**

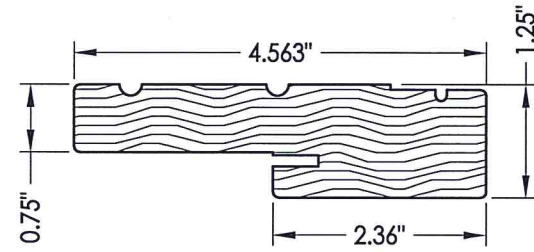


**HINGE JAMB**

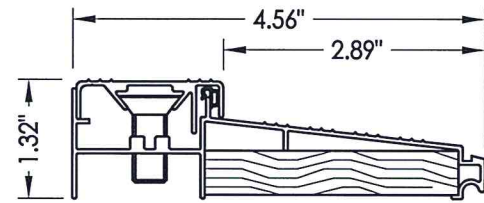
PRODUCT:	TAYLOR DOOR STEEL DOOR			
PART OR ASSEMBLY:	FRAME ANCHORING & HARDWARE DETAILS			
NO.	DATE	UPDATE TO 2018 IBC/IRC CODE	LFS	BY
1	7/18/20			
REVISIONS				
DATE:	11/3/14			
SCALE:	N.T.S.			
DWG. BY:	JK			
CHK. BY:	LFS			
DRAWING NO.:	TX-4495			
SHEET	6	OF	7	

**BILL OF MATERIALS**

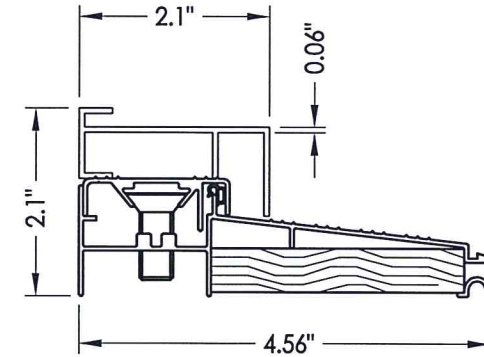
ITEM #	DESCRIPTION	MATERIAL
A	2X FRAMING (SG >= 0.42)	WOOD
C	1/4" MAX. SHIM SPACE	-
F	#7 X 2" PFH DRYWALL SCREW	STEEL
G	#10 X 3" PFH WOOD SCREW (1-1/2" MIN. EMB.)	STEEL
J	#10 X 2-1/2" PFH WOOD SCREW	STEEL
K	#6 X 3" PFH WOOD SCREW	STEEL
L	#10 X 2-1/2" PFH WOOD SCREW (1.15" MIN. EMB.)	STEEL
M	#8 X 2-1/2" PFH SMS	STEEL
P	1/4" PFH CONCRETE SCREW (1-3/4" MIN. EMB.)	STEEL
1	WOOD JAMB (FINGER-JOINT PINE)	WOOD
5	2X MULLION (SG >= 0.55)	WOOD
6	SWEEP	PVC
7	WEATHERSTRIP	FOAM
9	#10 x 3/4" PFH WOOD SCREW	STEEL
11	4" X 4" HINGE	STEEL
12	LATCH STRIKE PLATE	STEEL
13	DEADBOLT STRIKE PLATE	STEEL
20	INSWING THRESHOLD	ALUM/WOOD
21	INSWING THRESHOLD w/ SIDELITE ADAPTER	ALUM/WOOD
22	OUTSWING THRESHOLD	ALUM/WOOD
23	OUTSWING THRESHOLD	ALUM/WOOD
24	OUTSWING THRESHOLD	ALUM/WOOD
25	OUTSWING THRESHOLD	ALUM
40	DOOR PANEL	-
50	SIDELITE PANEL	-



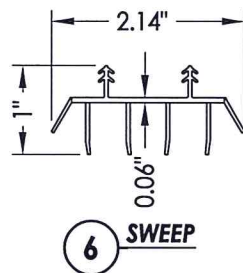
**1 WOOD JAMB**



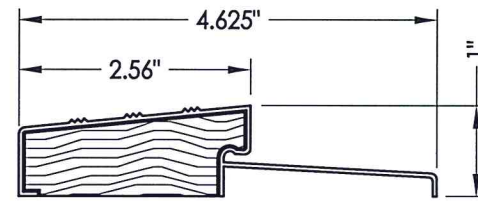
**20 INSWING THRESHOLD**  
DLP



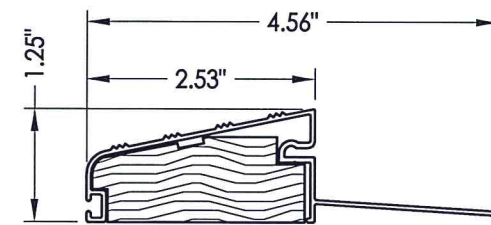
**21 INSWING THRESHOLD w/ SIDELITE ADAPTER**  
DLP



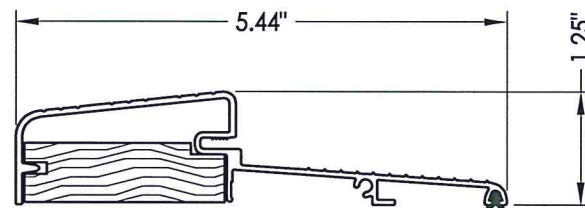
**6 SWEEP**



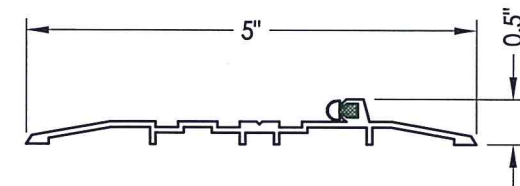
**22 OUTSWING THRESHOLD**  
DLP (QOS)



**23 OUTSWING THRESHOLD**  
DLP (QOSH)



**24 OUTSWING THRESHOLD**  
Combo

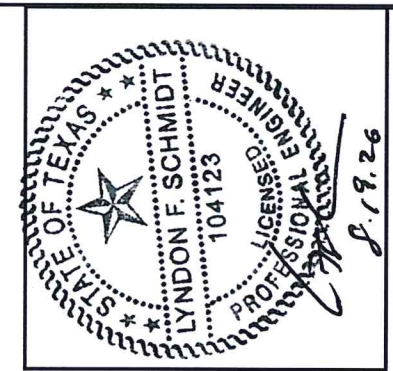


**25 OUTSWING THRESHOLD**  
DLP (OSHC)

**CONCRETE ANCHOR NOTES:**

- Concrete anchor locations at the corners may be adjusted to maintain the min. edge distance to mortar joints.
- Concrete anchor locations noted as "MAX. ON CENTER" must be adjusted to maintain the min. edge distance to mortar joints, additional concrete anchors may be required to ensure the "MAX. ON CENTER" dimension are not exceeded.
- Concrete anchor table:

ANCHOR TYPE	ANCHOR SIZE	MIN. EMBEDMENT	MIN. CLEARANCE TO MASONRY EDGE	MIN. CLEARANCE TO ADJACENT ANCHOR
ITW TAPCON®	1/4"	1-3/4"	1-1/2"	4"
DeWALT ULTRACON®	1/4"	1-3/4"	1"	4"



Documents Prepared By: Lyndon F. Schmidt, P.E.  
TEXAS P.E. #104123

**RW** BUILDING CONSULTANTS, INC.  
P.O. Box 230 Valrico FL 33595  
Phone No.: 813.659.9197  
TEXAS BOARD OF PROFESSIONAL ENGINEERS  
CERTIFICATE OF REGISTRATION # F-11852

PRODUCT: TAYLOR DOOR  
STEEL DOOR

PART OR ASSEMBLY:  
BILL OF MATERIALS  
& COMPONENTS

NO.	DATE	DESCRIPTION	BY
1	7/18/20	UPDATE TO 2018 IBC/IRC CODE	LFS

REVISIONS

DATE: 11/3/14  
SCALE: N.T.S.  
DWG. BY: JK  
CHK. BY: LFS  
DRAWING NO.: TX-4495  
SHEET 7 OF 7