

REVISIONS			
REV	DESCRIPTION	DATE	APPROVED
C	REVISED PER NEW CODE	02/09/2021	R.L.

NOTES:

1. THE PRODUCT SHOWN HEREIN IS DESIGNED AND MANUFACTURED TO COMPLY WITH REQUIREMENTS OF THE 2018 IBC AND 2018 IRC.
2. WOOD FRAMING AND MASONRY OPENING TO BE DESIGNED AND ANCHORED TO PROPERLY TRANSFER ALL LOADS TO STRUCTURE. FRAMING AND MASONRY OPENING IS THE RESPONSIBILITY OF THE ARCHITECT OR ENGINEER OF RECORD.
3. 1X BUCK OVER MASONRY/CONCRETE IS OPTIONAL.
4. WHERE SHIM OR BUCK THICKNESS IS LESS THAN 1-1/2" UNITS MUST BE ANCHORED THROUGH THE FRAME IN ACCORDANCE WITH MANUFACTURER'S PUBLISHED INSTALLATION INSTRUCTIONS. ANCHORS SHALL BE SECURELY FASTENED DIRECTLY INTO MASONRY, CONCRETE OR OTHER STRUCTURAL SUBSTRATE MATERIAL.
5. WHERE WOOD BUCK THICKNESS IS 1-1/2" OR GREATER, BUCK SHALL BE SECURELY FASTENED TO MASONRY, CONCRETE OR OTHER STRUCTURAL SUBSTRATE. UNITS MAY BE ANCHORED THROUGH FRAME TO SECURED WOOD BUCK IN ACCORDANCE WITH MANUFACTURER'S PUBLISHED INSTALLATION INSTRUCTIONS.
6. WHERE 1X BUCK IS NOT USED DISSIMILAR MATERIALS MUST BE SEPARATED WITH APPROVED COATING OR MEMBRANE. SELECTION OF COATING OR MEMBRANE IS THE RESPONSIBILITY OF THE ARCHITECT OR ENGINEER OF RECORD.
7. BUCKS SHALL EXTEND BEYOND UNIT FRAME INTERIOR FACE SO THAT FULL FRAME SUPPORT IS PROVIDED.
8. SHIM AS REQUIRED AT EACH ANCHOR LOCATION WITH LOAD BEARING SHIM. SHIM WHERE SPACE OF 1/16" OR GREATER OCCURS. MAXIMUM ALLOWABLE SHIM STACK TO BE 1/4".
9. SHIMS SHALL BE LOCATED, APPLIED AND MADE FROM MATERIALS AND THICKNESS CAPABLE OF SUSTAINING APPLICABLE LOADS.
10. WIND LOAD DURATION FACTOR Cd=1.6 WAS USED FOR WOOD ANCHOR CALCULATIONS.
11. FRAME JAMB AND HEAD MATERIAL: CO-EXTRUDED PVC FOAM 1 1/2" THICK.
12. FRAME SILL MATERIAL: CO-EXTRUDED PVC FOAM 2" THICK WITH ALUMINUM CLADDING .063" THICK.
13. DOOR PANEL AND SIDELITE MATERIAL: PVC FOAM TOP AND BOTTOM RAILS, AND PVC FOAM VERTICAL STILES WITH PINE REINFORCEMENTS AND POLYURETHANE FOAM CORE.
14. UNITS MUST BE GLAZED PER ASTM E1300, SEE SHEET 3 FOR GLASS DETAILS.
15. APPROVED IMPACT PROTECTIVE SYSTEM IS NOT REQUIRED FOR THIS PRODUCT IN WIND BORNE DEBRIS REGIONS.

16. FOR ANCHORING THROUGH FRAME INTO WOOD FRAMING OR 2X BUCK USE #10 WOOD SCREWS WITH SUFFICIENT LENGTH TO ACHIEVE A 1 1/4" MINIMUM EMBEDMENT INTO SUBSTRATE. LOCATE ANCHORS AS SHOWN IN ELEVATIONS AND INSTALLATION DETAILS.
17. FOR ANCHORING THROUGH FRAME INTO MASONRY/CONCRETE USE 1/4" TAPCONS WITH SUFFICIENT LENGTH TO ACHIEVE A 1 1/4" MINIMUM EMBEDMENT INTO SUBSTRATE WITH 2" MINIMUM EDGE DISTANCE. LOCATE ANCHORS AS SHOWN IN ELEVATIONS AND INSTALLATION DETAILS.
18. FOR ANCHORING THROUGH FRAME INTO METAL STRUCTURE USE #10 SMS OR SELF DRILLING SCREWS WITH SUFFICIENT LENGTH TO ACHIEVE 3 THREADS MINIMUM BEYOND STRUCTURE INTERIOR WALL. LOCATE ANCHORS AS SHOWN IN ELEVATIONS AND INSTALLATION DETAILS.
19. ALL FASTENERS TO BE CORROSION RESISTANT.
20. INSTALLATION ANCHORS SHALL BE INSTALLED IN ACCORDANCE WITH ANCHOR MANUFACTURER'S INSTALLATION INSTRUCTIONS AND ANCHORS SHALL NOT BE USED IN SUBSTRATES WITH STRENGTHS LESS THAN THE MINIMUM STRENGTH SPECIFIED BELOW:
  - A. WOOD: MINIMUM SPECIFIC GRAVITY OF G=0.42
  - B. CONCRETE: MINIMUM COMPRESSIVE STRENGTH OF 2,000 PSI.
  - C. MASONRY: HOLLOW/FILLED BLOCK PER ASTM C90 WITH Fm=2,000PSI MINIMUM.
  - D. METAL STRUCTURE: STEEL 18GA (.048") FY=33KSI/FU=52KSI OR ALUMINUM 6063-T5 FU=30KSI .125" THICK MINIMUM
21. APPROVED CONFIGURATIONS: OX, XO AND OXXO. SEE SHEET 2.

SIGNED: 04/08/2021

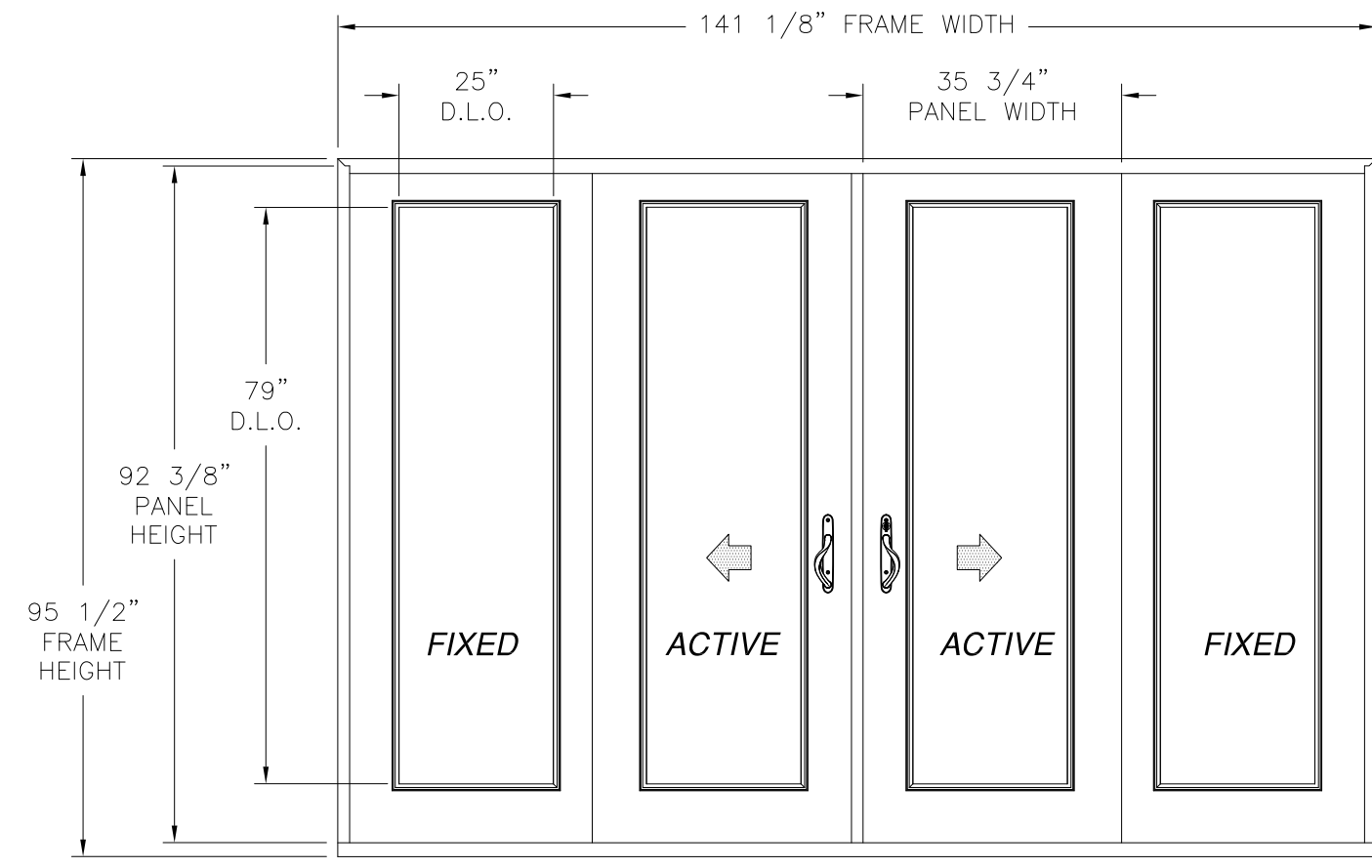
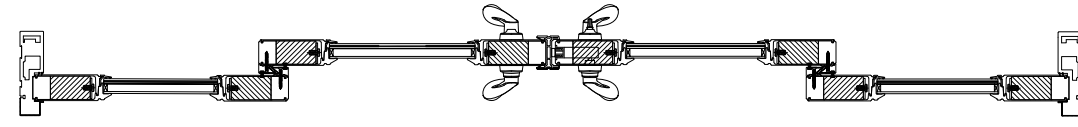
TABLE OF CONTENTS	
SHEET NO.	DESCRIPTION
1	OXXO ELEVATION AND NOTES
2	ADDITIONAL CONFIGURATIONS & HARDWARE
3	ANCHORING LAYOUTS
4 - 5	INSTALLATION DETAILS

NAN YA PLASTICS CORP. USA 8989 NORTH LOOP EAST HOUSTON, TX 77029		
SERIES SPLS FIBERGLASS GLAZED SLIDING GLASS DOOR ASSEMBLY - IMPACT NOTES		
DRAWN: N.G.	DWG NO. 08-02094	REV C
SCALE NTS	DATE 07/10/13	SHEET 1 OF 8
L. ROBERTO LOMAS P.E. 1432 WOODFORD RD LEWISVILLE, NC 27023 434-688-0609 rllomas@rlomaspe.com		

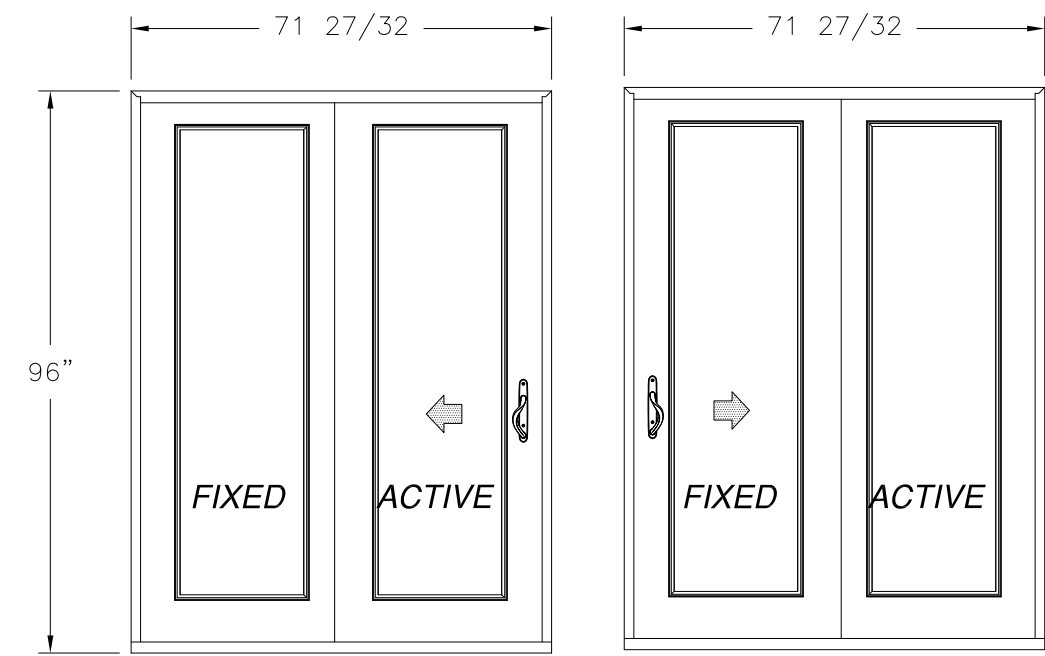


Luis R. Lomas P.E.  
Texas No. 101889

REVISIONS			
REV	DESCRIPTION	DATE	APPROVED
C	REVISED PER NEW CODE	02/09/2021	R.L.



**SERIES 12080 SPLS GLIDING PATIO DOUBLE DOOR W/ SIDELITES**  
EXTERIOR VIEW



**SINGLE W/SIDELITE**  
EXTERIOR VIEW

**SINGLE W/SIDELITE**  
EXTERIOR VIEW

DESIGN PRESSURE RATING	IMPACT RATING
±50PSF	LARGE AND SMALL MISSILE IMPACT

MISSILE LEVEL D, WIND ZONE 4

HARDWARE SCHEDULE	
A.	(1) MULTI-POINT LOCK WITH KEEPERS AT ACTIVE PANEL
B.	(1) GLIDING HANDLE AT ACTIVE PANEL
C.	(1) ANTI-LIFT STOPPER AT FRAME HEAD
D.	(1) HEAD BUMPER AT FRAME HEAD
E.	(2) ADJUSTABLE ROLLER AT FRAME SILL ACTIVE PANEL
F.	WIND STOPPER (A) AT STATIONARY SIDELITE HEAD
G.	WIND STOPPER (B) AT STATIONARY SIDELITE SILL
H.	REINFORCEMENT WOOD (A) ON STATIONARY AND ACTIVE PANEL STILES
I.	REINFORCEMENT WOOD (B) AT ALL PANEL TOP RAILS AND DOUBLE ON PANEL BOTTOM RAILS
J.	1/8" REINFORCEMENT STEEL AT PANEL STILES

SIGNED: 04/08/2021

NAN YA PLASTICS CORP. USA  
8989 NORTH LOOP EAST  
HOUSTON, TX 77029

SERIES SPLS FIBERGLASS GLAZED  
SLIDING GLASS DOOR ASSEMBLY – IMPACT  
ELEVATIONS

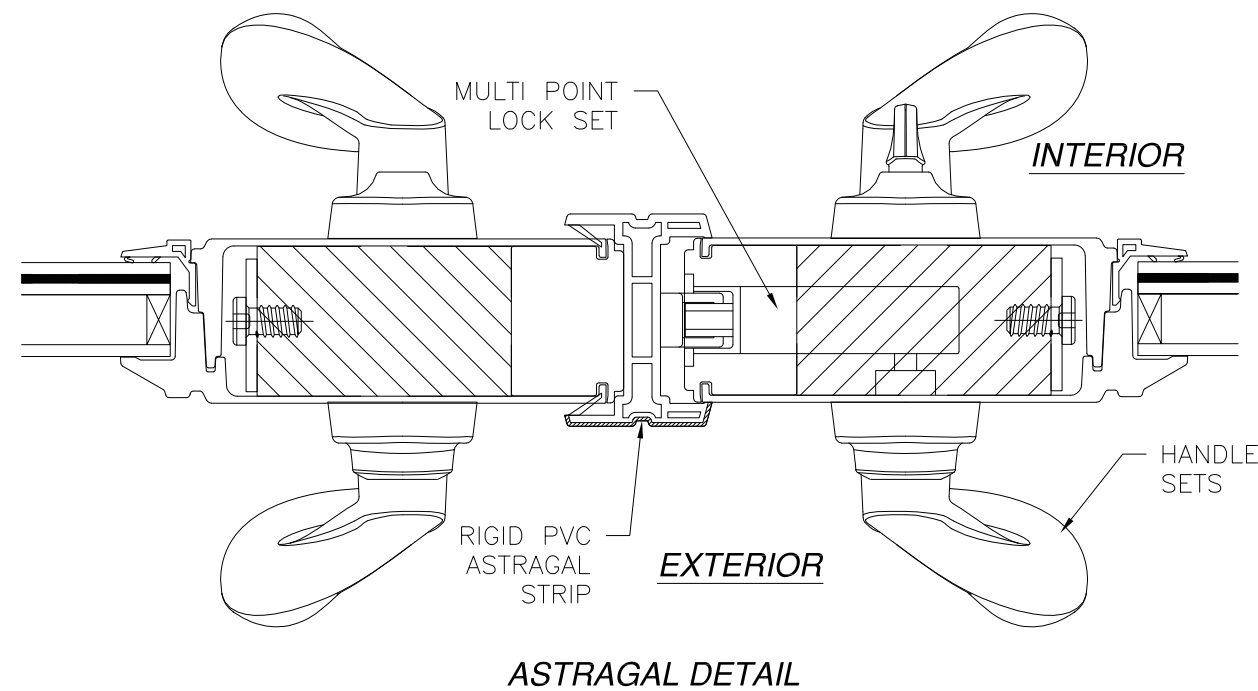
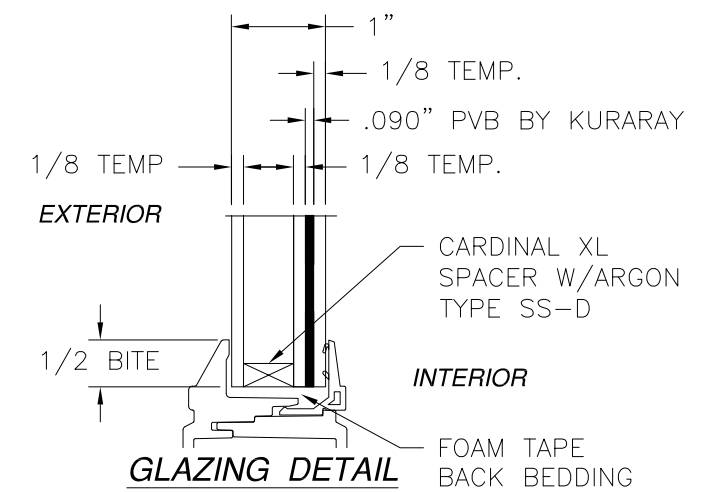
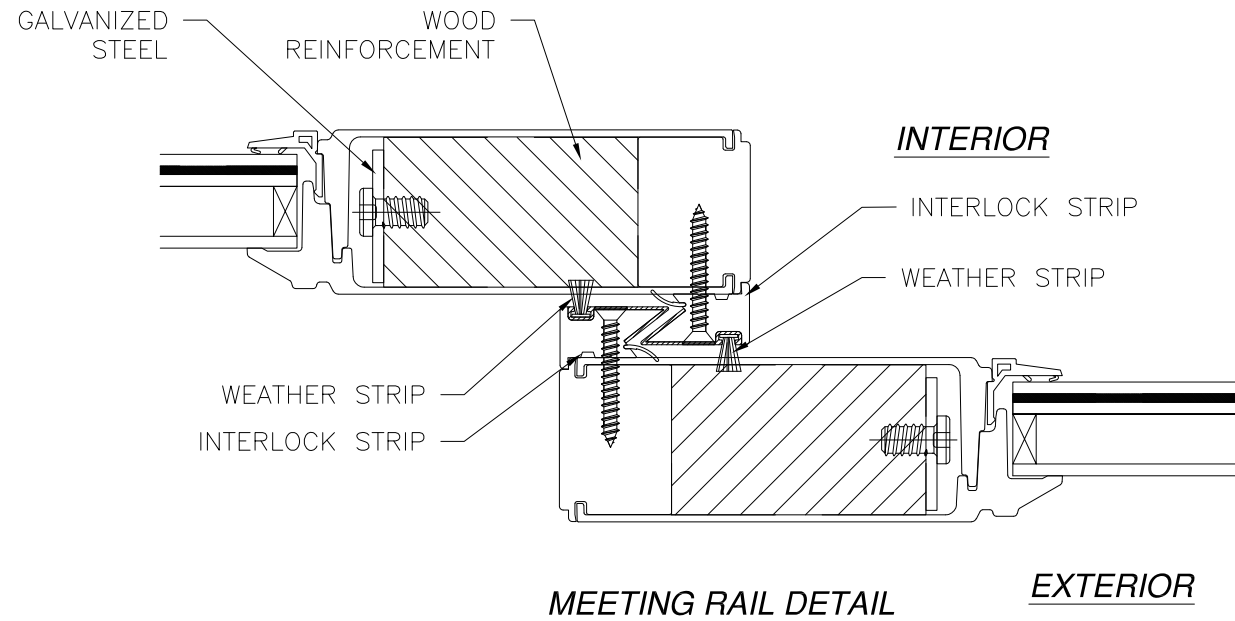
DRAWN: N.G.	DWG NO. 08-02094	REV C
SCALE NTS	DATE 07/10/13	SHEET 2 OF 8

L. ROBERTO LOMAS P.E.  
1432 WOODFORD RD LEWISVILLE, NC 27023  
434-688-0609 rllomas@rlomaspe.com



Luis R. Lomas P.E.  
Texas No. 101889

REVISIONS			
REV	DESCRIPTION	DATE	APPROVED
C	REVISED PER NEW CODE	02/09/2021	R.L.



SIGNED: 04/08/2021

NAN YA PLASTICS CORP. USA  
 8989 NORTH LOOP EAST  
 HOUSTON, TX 77029

SERIES SPLS FIBERGLASS GLAZED  
 SLIDING GLASS DOOR ASSEMBLY - IMPACT  
 ADDITIONAL CONFIGURATIONS & HARDWARE DETAILS

DRAWN: N.G.	DWG NO. 08-02094	REV C
----------------	---------------------	----------

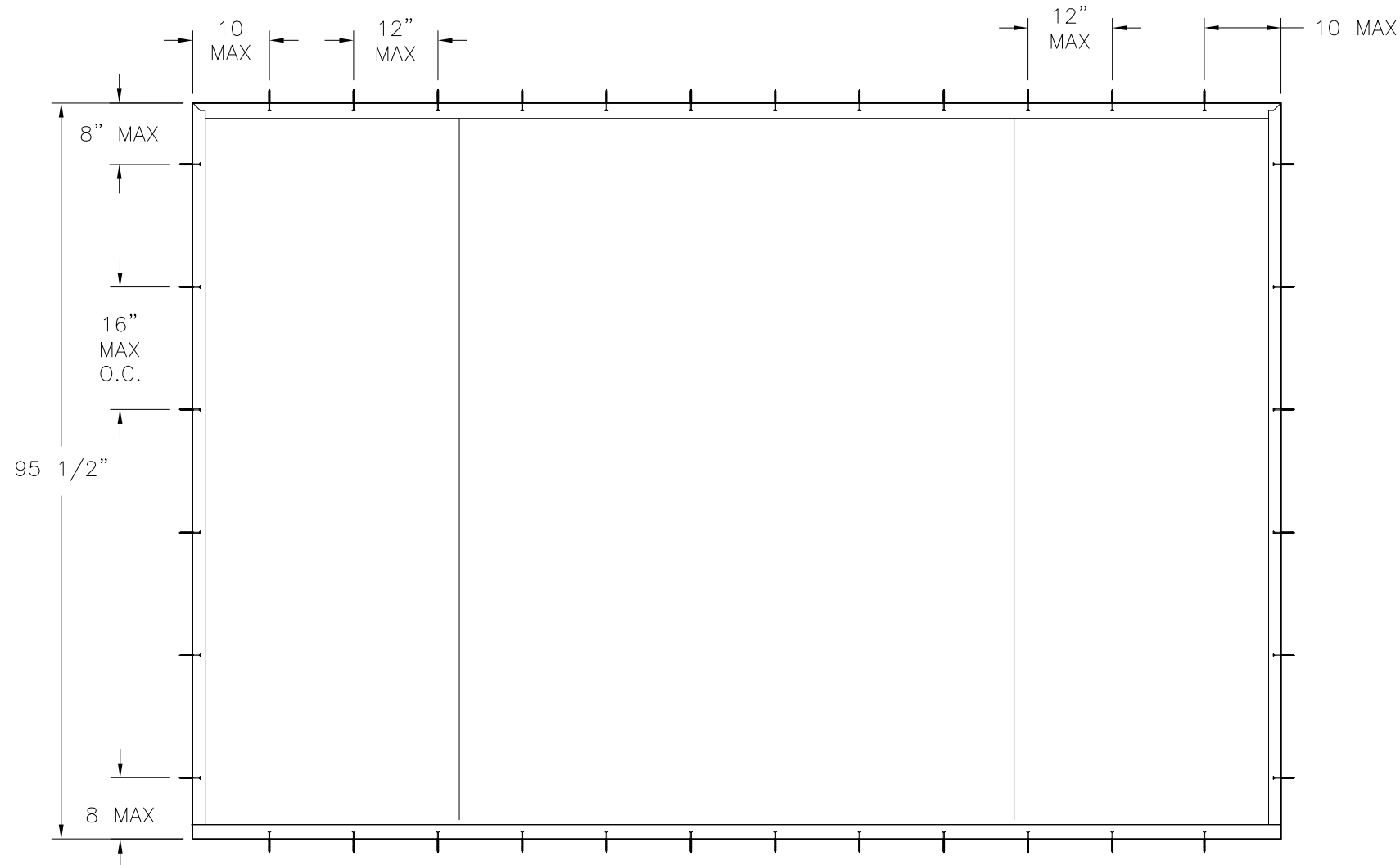
SCALE NTS	DATE 07/10/13	SHEET 3 OF 8
--------------	------------------	-----------------

L. ROBERTO LOMAS P.E.  
 1432 WOODFORD RD LEWISVILLE, NC 27023  
 434-688-0609 rllomas@lrlomaspe.com

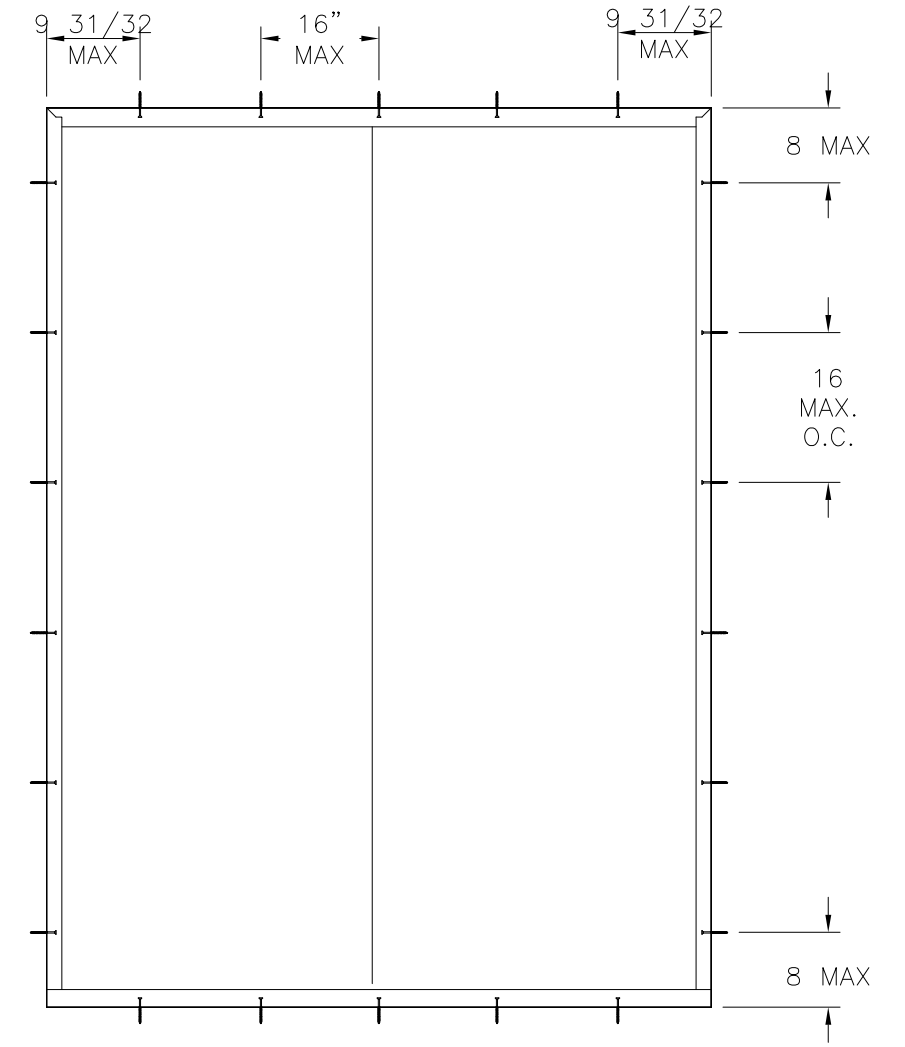


Luis R. Lomas P.E.  
 Texas No. 101889

REVISIONS			
REV	DESCRIPTION	DATE	APPROVED
C	REVISED PER NEW CODE	02/09/2021	R.L.



ANCHORING LAYOUT FOR DOUBLE W/SIDELITES  
EXTERIOR VIEW



ANCHORING LAYOUT FOR SINGLE W/SIDELITE  
EXTERIOR VIEW

SIGNED: 04/08/2021

NAN YA PLASTICS CORP. USA  
8989 NORTH LOOP EAST  
HOUSTON, TX 77029

SERIES SPLS FIBERGLASS GLAZED  
SLIDING GLASS DOOR ASSEMBLY - IMPACT  
ANCHORING LAYOUTS

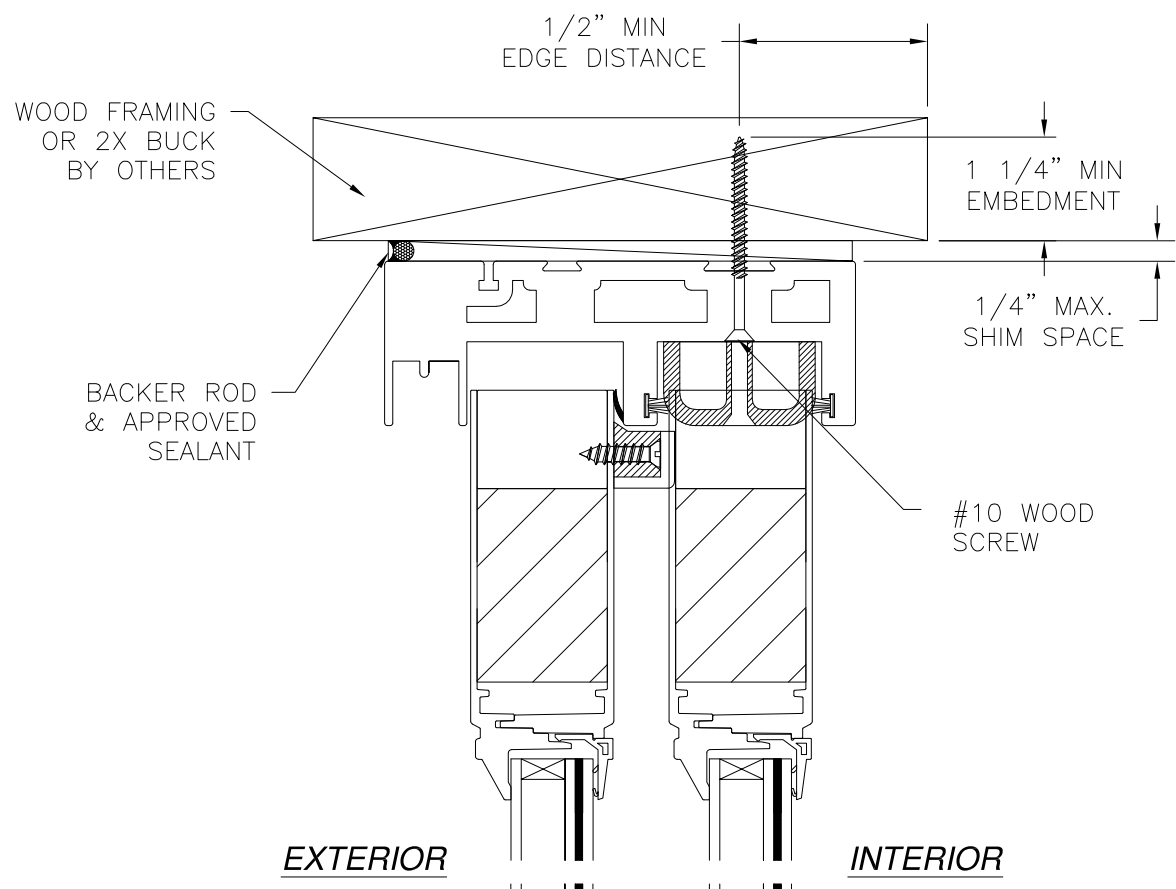
DRAWN: N.G.	DWG NO. 08-02094	REV C
SCALE NTS	DATE 07/10/13	SHEET 4 OF 8

L. ROBERTO LOMAS P.E.  
1432 WOODFORD RD LEWISVILLE, NC 27023  
434-688-0609 rllomas@rlomaspe.com

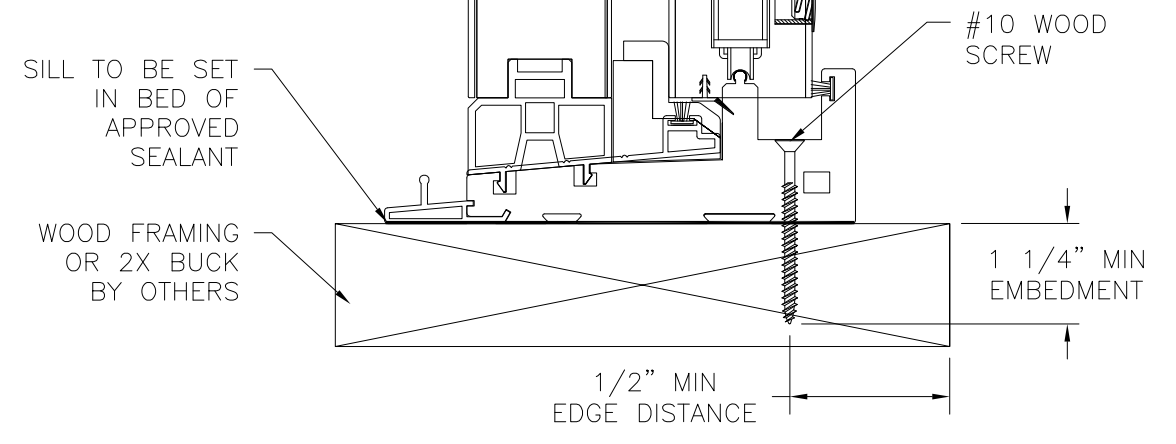


Luis R. Lomas P.E.  
Texas No. 101889

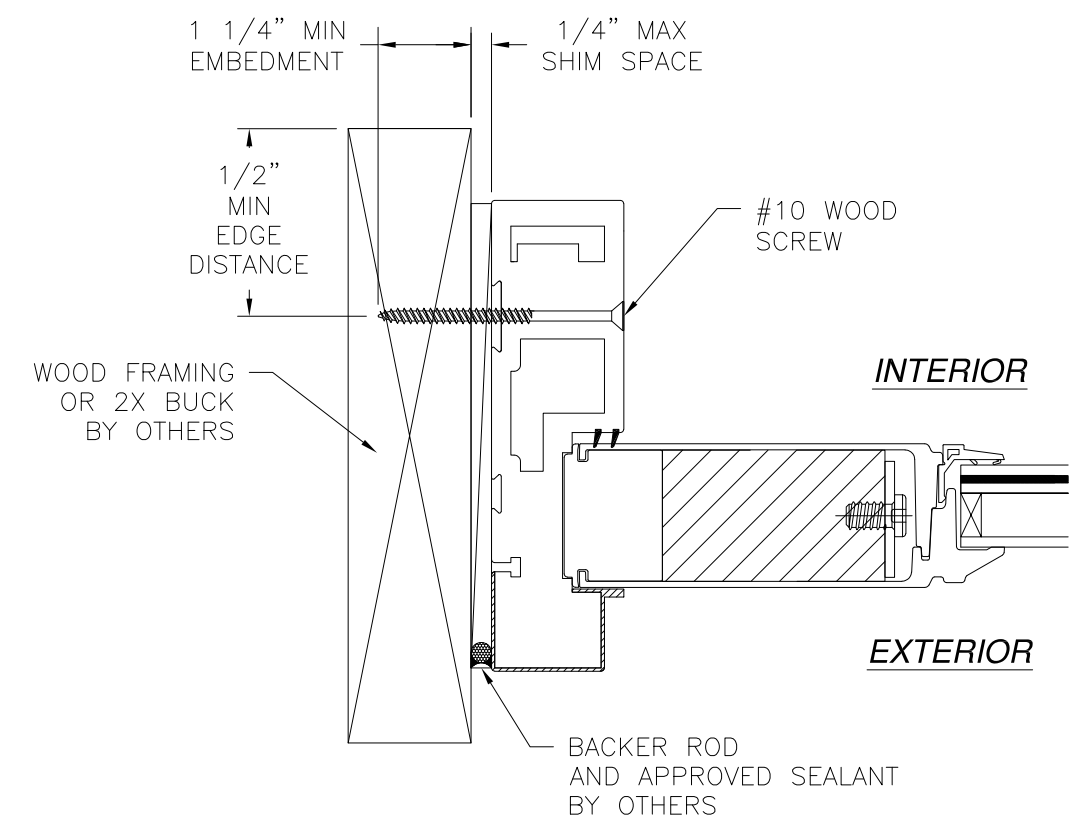
REVISIONS			
REV	DESCRIPTION	DATE	APPROVED
C	REVISED PER NEW CODE	02/09/2021	R.L.



EXTERIOR INTERIOR



**VERTICAL CROSS SECTION**  
DOOR SHOWN, SIDELITE SIMILAR  
2X BUCK/WOOD FRAMING INSTALLATION



**HORIZONTAL CROSS SECTION**  
2X BUCK/WOOD FRAMING INSTALLATION

- NOTES:**
1. INTERIOR AND EXTERIOR FINISHES, BY OTHERS, NOT SHOWN FOR CLARITY.
  2. PERIMETER AND JOINT SEALANT BY OTHERS TO BE DESIGNED IN ACCORDANCE WITH ASTM E2112

SIGNED: 04/08/2021

NAN YA PLASTICS CORP. USA  
8989 NORTH LOOP EAST  
HOUSTON, TX 77029

SERIES SPLS FIBERGLASS GLAZED  
SLIDING GLASS DOOR ASSEMBLY - IMPACT  
INSTALLATION DETAILS

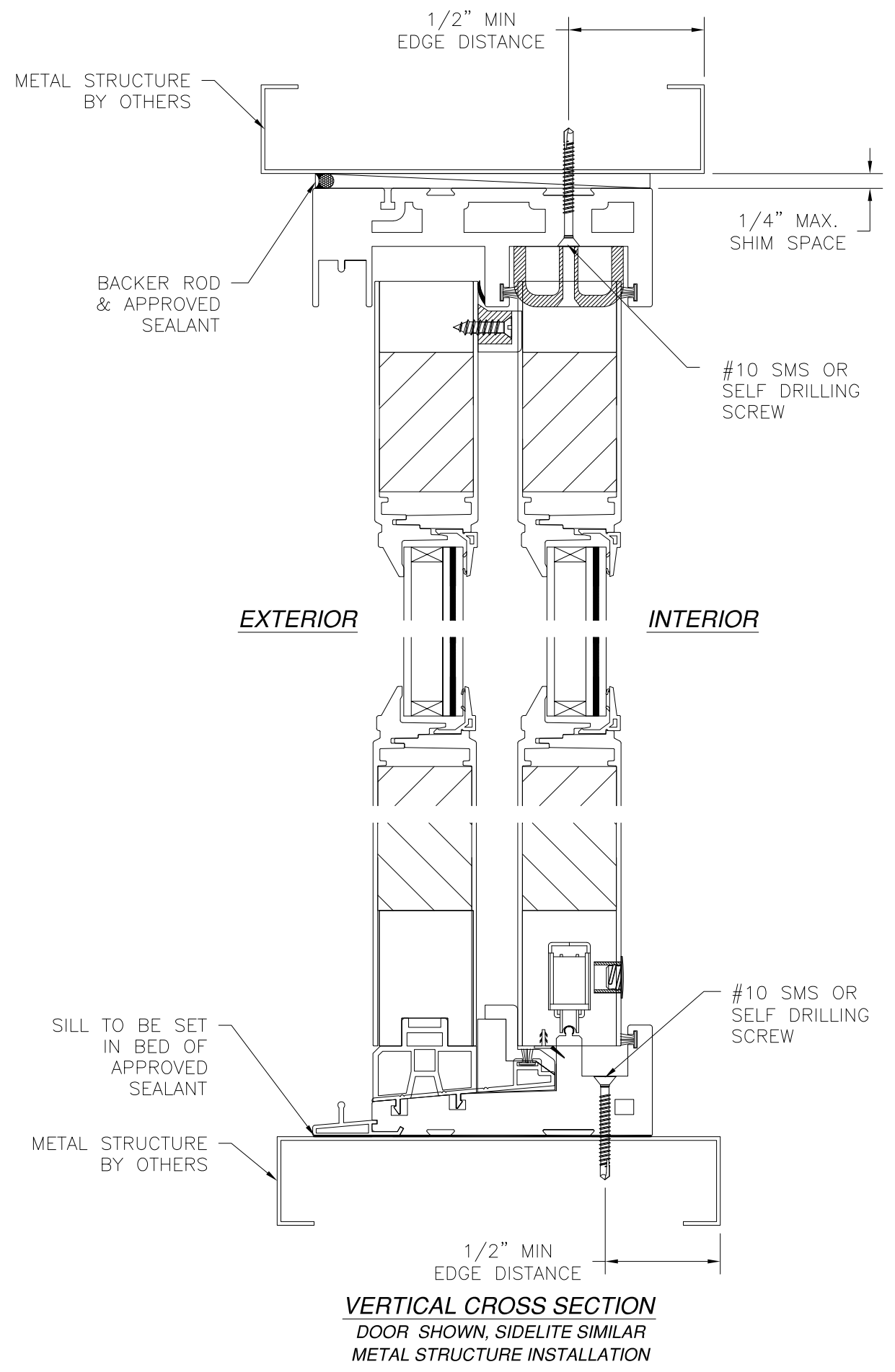
DRAWN: N.G.	DWG NO. 08-02094	REV C
SCALE NTS	DATE 07/10/13	SHEET 5 OF 8

L. ROBERTO LOMAS P.E.  
1432 WOODFORD RD LEWISVILLE, NC 27023  
434-688-0609 rllomas@rlomaspe.com

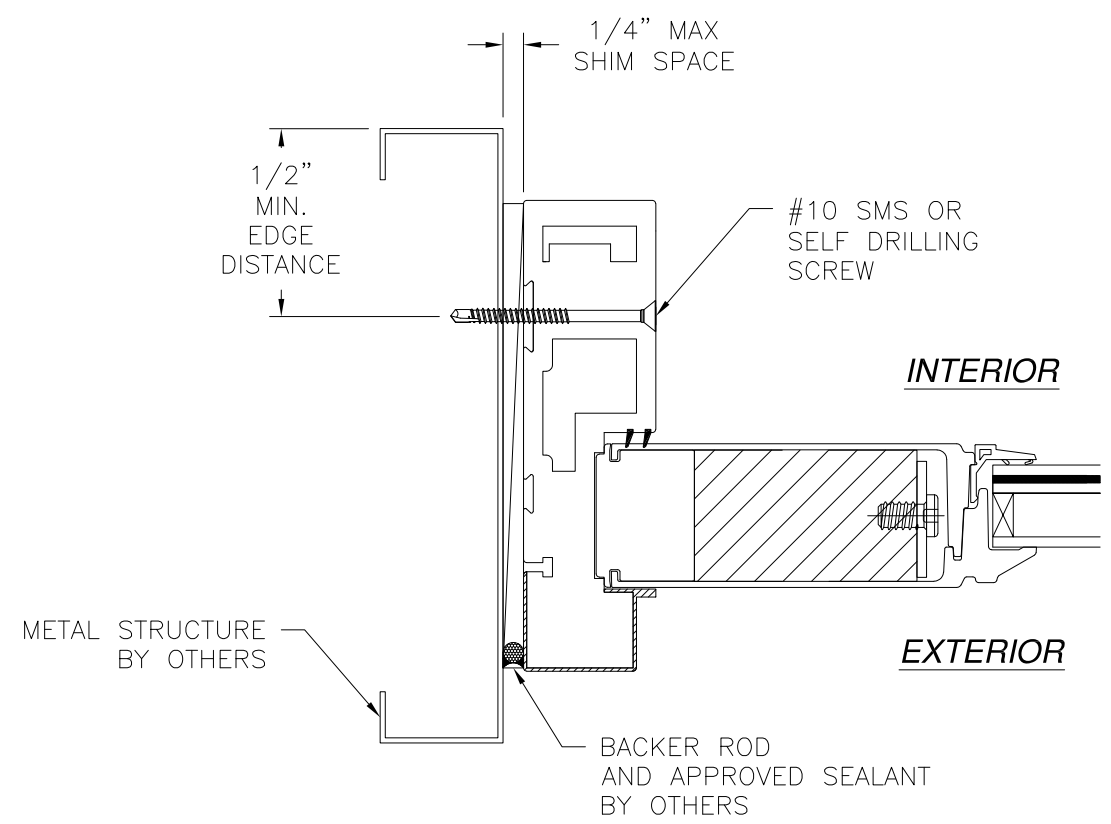


Luis R. Lomas P.E.  
Texas No. 101889

REVISIONS			
REV	DESCRIPTION	DATE	APPROVED
C	REVISED PER NEW CODE	02/09/2021	R.L.



**VERTICAL CROSS SECTION**  
 DOOR SHOWN, SIDELITE SIMILAR  
 METAL STRUCTURE INSTALLATION



**HORIZONTAL CROSS SECTION**  
 METAL STRUCTURE INSTALLATION

- NOTES:**
1. INTERIOR AND EXTERIOR FINISHES, BY OTHERS, NOT SHOWN FOR CLARITY.
  2. PERIMETER AND JOINT SEALANT BY OTHERS TO BE DESIGNED IN ACCORDANCE WITH ASTM E2112

SIGNED: 04/08/2021

NAN YA PLASTICS CORP. USA  
 8989 NORTH LOOP EAST  
 HOUSTON, TX 77029

SERIES SPLS FIBERGLASS GLAZED  
 SLIDING GLASS DOOR ASSEMBLY - IMPACT  
 INSTALLATION DETAILS

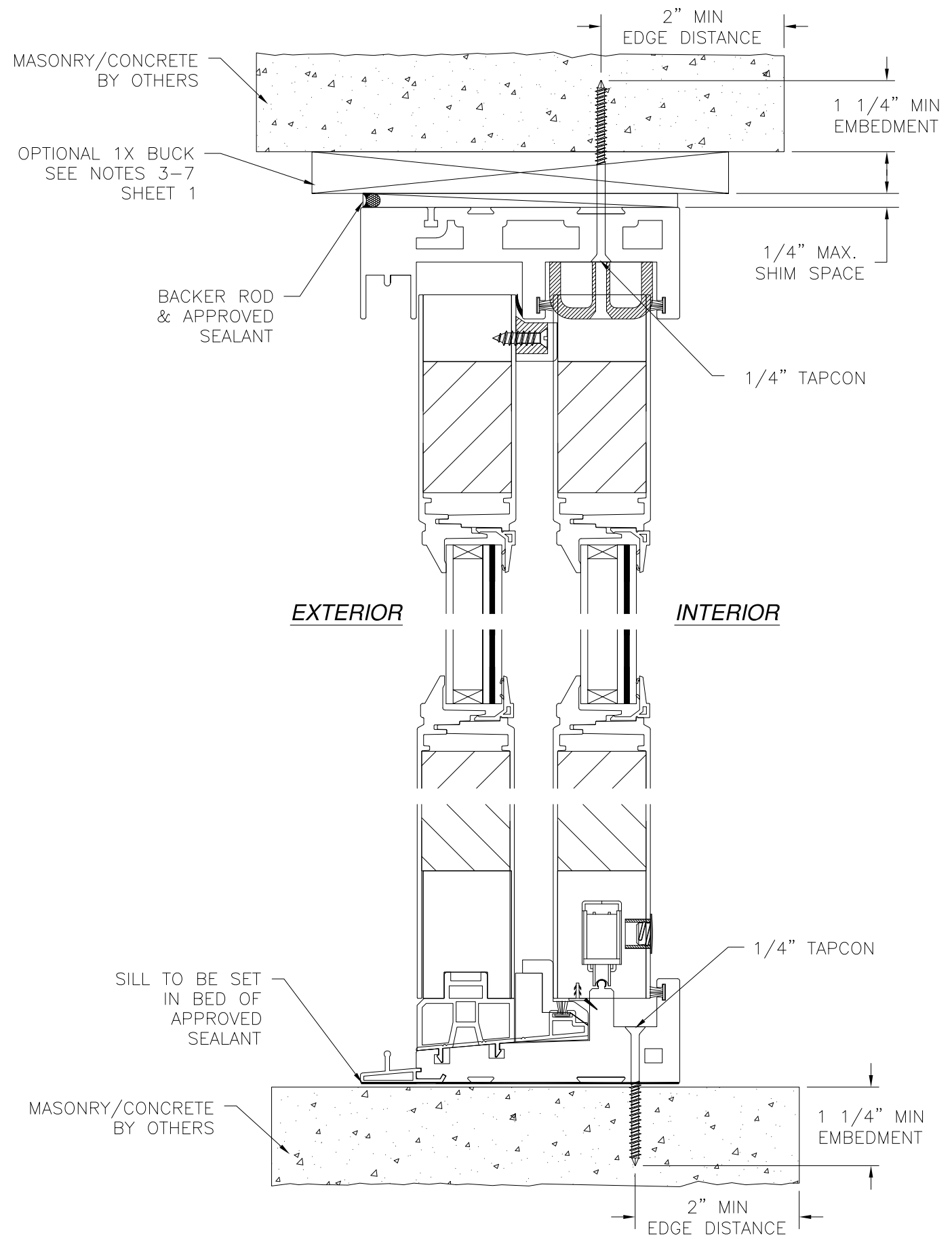
DRAWN: N.G.	DWG NO. 08-02094	REV C
SCALE NTS	DATE 07/10/13	SHEET 6 OF 8

L. ROBERTO LOMAS P.E.  
 1432 WOODFORD RD LEWISVILLE, NC 27023  
 434-688-0609 rllomas@rlomaspe.com

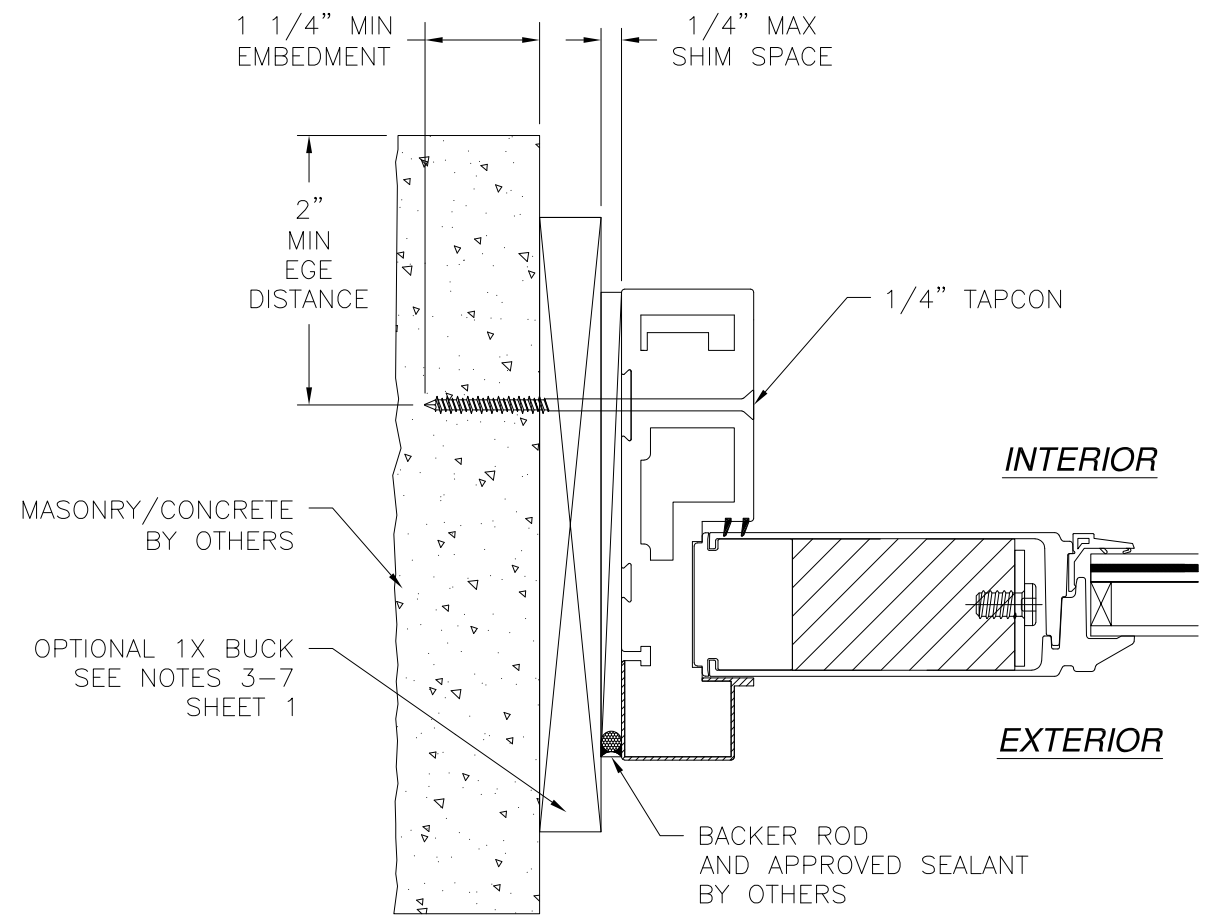


Luis R. Lomas P.E.  
 Texas No. 101889

REVISIONS			
REV	DESCRIPTION	DATE	APPROVED
C	REVISED PER NEW CODE	02/09/2021	R.L.



**VERTICAL CROSS SECTION**  
 DOOR SHOWN, SIDELITE SIMILAR  
 MASONRY/CONCRETE INSTALLATION



**HORIZONTAL CROSS SECTION**  
 MASONRY/CONCRETE INSTALLATION

- NOTES:**
1. INTERIOR AND EXTERIOR FINISHES, BY OTHERS, NOT SHOWN FOR CLARITY.
  2. PERIMETER AND JOINT SEALANT BY OTHERS TO BE DESIGNED IN ACCORDANCE WITH ASTM E2112

SIGNED: 04/08/2021

**NAN YA PLASTICS CORP. USA**  
 8989 NORTH LOOP EAST  
 HOUSTON, TX 77029

---

SERIES SPLS FIBERGLASS GLAZED  
 SLIDING GLASS DOOR ASSEMBLY – IMPACT  
 INSTALLATION DETAILS

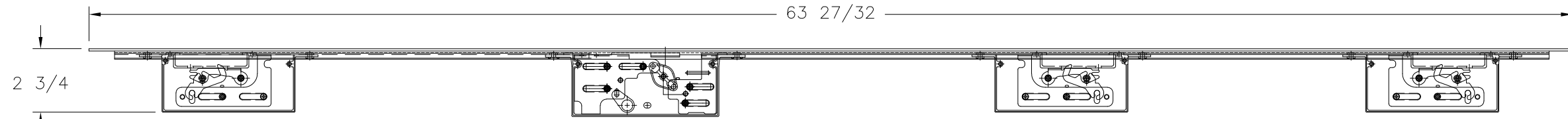
DRAWN: N.G.	DWG NO. 08-02094	REV C
SCALE NTS	DATE 07/10/13	SHEET 7 OF 8

L. ROBERTO LOMAS P.E.  
 1432 WOODFORD RD LEWISVILLE, NC 27023  
 434-688-0609 rllomas@rlomaspe.com

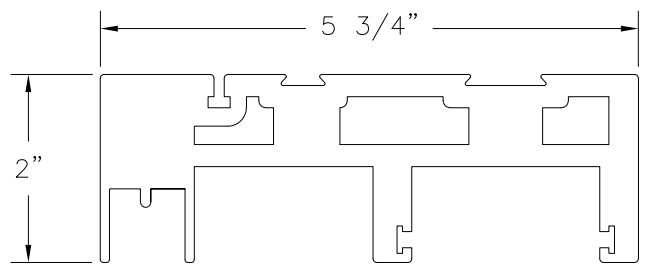


Luis R. Lomas P.E.  
 Texas No. 101889

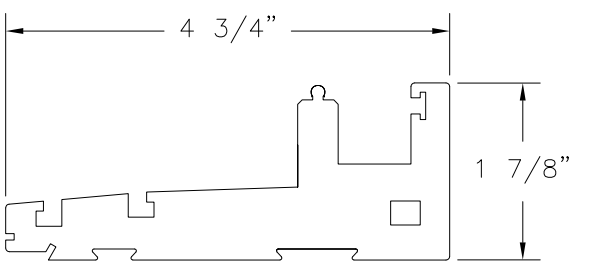
REVISIONS			
REV	DESCRIPTION	DATE	APPROVED
C	REVISED PER NEW CODE	02/09/2021	R.L.



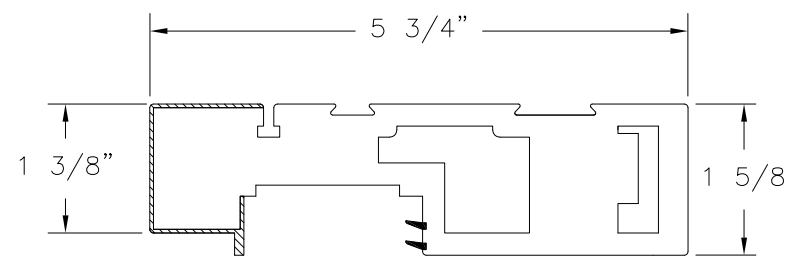
**MULTI-POINT LOCK**  
STAINLESS STEEL



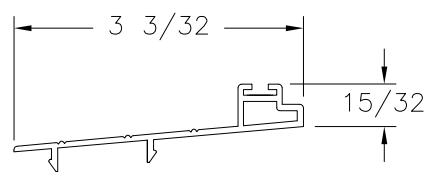
**HEAD FRAME**  
FOAM PVC CO-EX



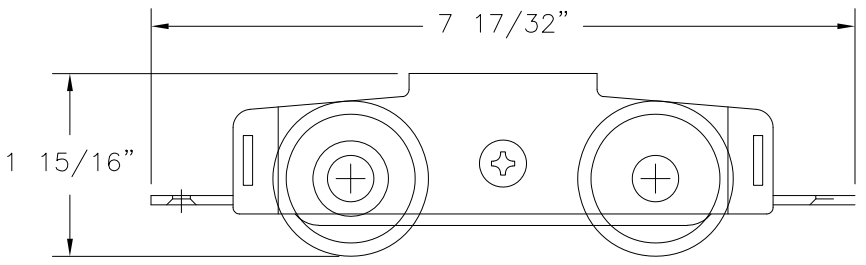
**SILL**  
FOAM PVC



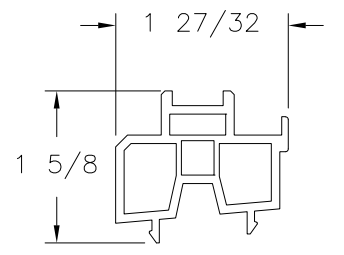
**SIDE JAMB**  
FOAM PVC



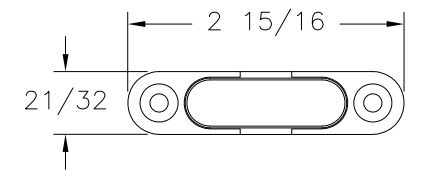
**SILL BOARD**  
ALUMINUM



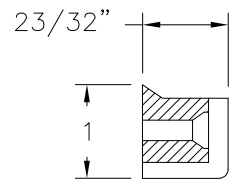
**ADJUSTABLE ROLLER**  
STAINLESS STEEL



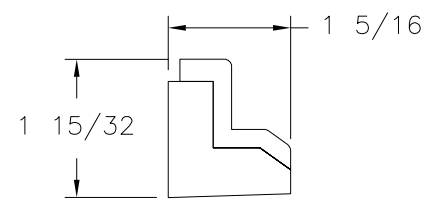
**STATIONARY BASE**  
RIGID PVC



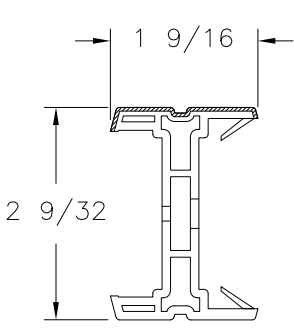
**ANTI-LIFT STOPPER**  
DIE CASTING



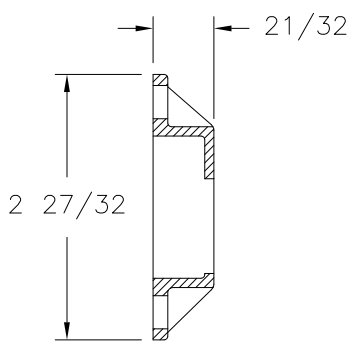
**WIND STOPPER (A)**  
FOAM EPDM



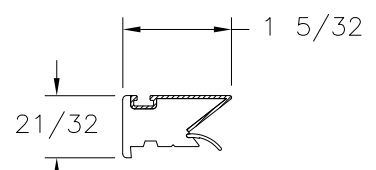
**WIND STOPPER (B)**  
FOAM EPDM



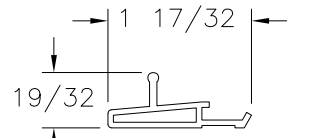
**ASTRAGAL STRIP**  
RIGID PVC



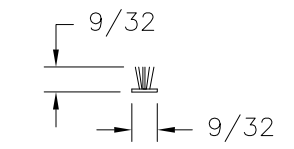
**LOCK KEEPER**  
DIE CASTING



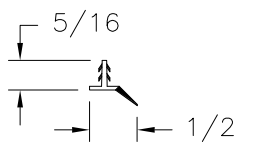
**INTERLOCK STRIP**  
FOAM PVC



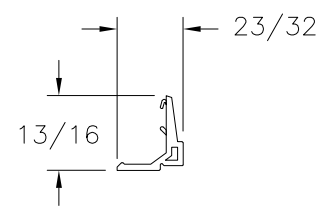
**SCREEN TRACK**  
ALUMINUM



**WEATHER PILE**  
PVC



**WEATHER STRIP**  
SOFT PVC



**GLAZING BEAD**  
PVC

SIGNED: 04/08/2021

NAN YA PLASTICS CORP. USA  
8989 NORTH LOOP EAST  
HOUSTON, TX 77029

SERIES SPLS FIBERGLASS GLAZED  
SLIDING GLASS DOOR ASSEMBLY - IMPACT  
COMPONENTS

DRAWN: N.G.	DWG NO. 08-02094	REV C
SCALE NTS	DATE 07/10/13	SHEET 8 OF 8

L. ROBERTO LOMAS P.E.  
1432 WOODFORD RD LEWISVILLE, NC 27023  
434-688-0609 rllomas@lrlomaspe.com



Luis R. Lomas P.E.  
Texas No. 101889