

# WINCORE™

## WINDOWS & DOORS

250 Staunton Turnpike, Parkersburg, WV 26104

### 400/500 Series Vinyl Sliding Patio Door w/ Transom "NON-IMPACT"

EVALUATED FOR USE IN THE STATE OF TEXAS

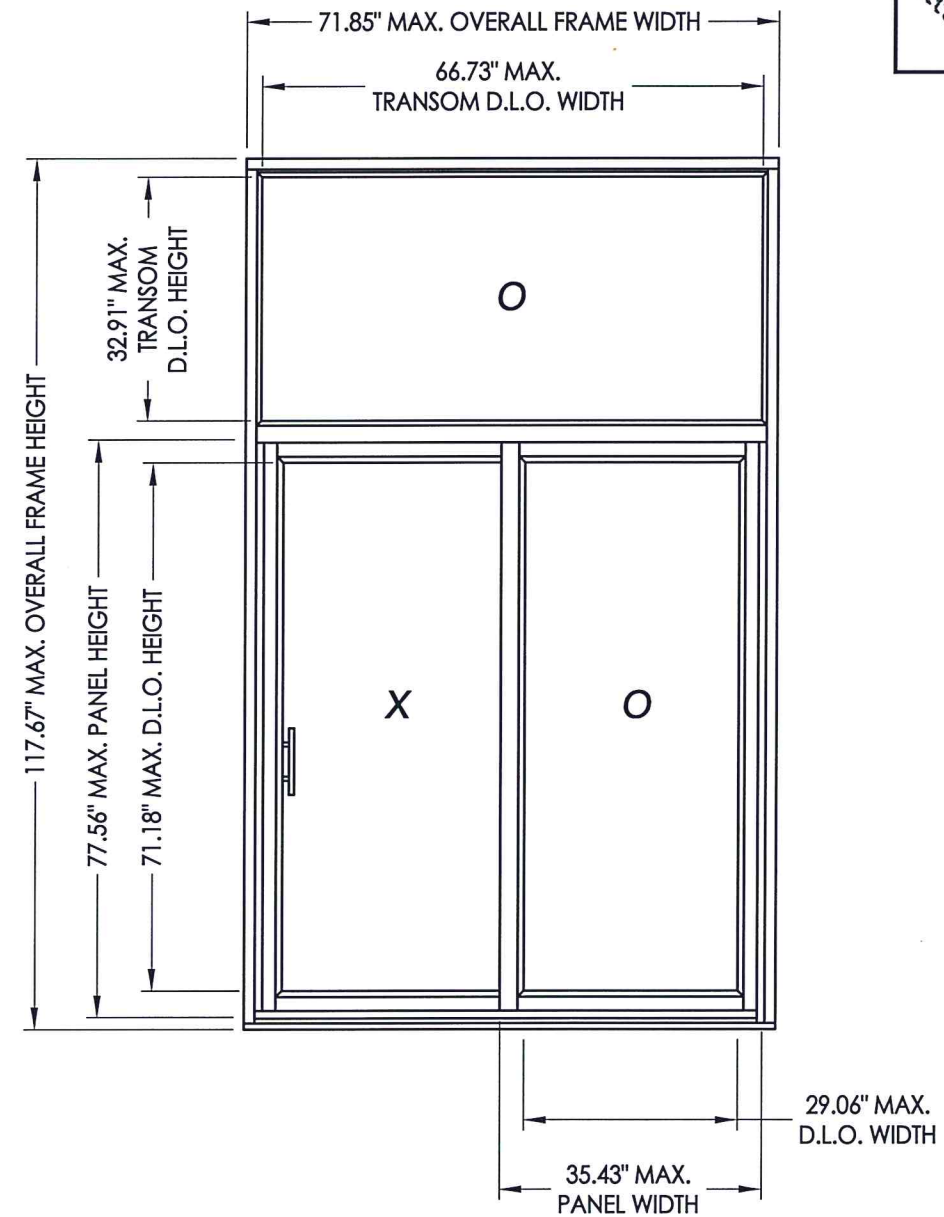
**TDI DR-676**

The Wincore Sliding Patio Door described herein complies with the 2018 International Residential Code (IRC), Sections R301 & R609 and the 2018 International Building Code (IBC), Sections 1404.13, 1609, 1709.5, 2403 and 2404 subject to the following conditions:

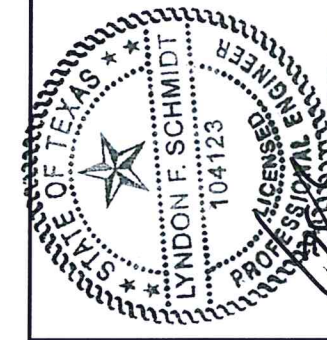
1. Anchors shall be as listed and spaced as shown in the details. Anchor embedment to base material shall be beyond wall dressing or stucco.
2. When used in areas requiring wind-borne debris protection this product is required to be protected with an impact resistant covering that complies with Section R301.2.1.2 of the IRC and Section 1609.1.2 of the IBC.
3. Allowable design pressure requirements must be equal to or less than the design pressure rating shown in the design pressure chart, sheet 1 of this drawing.
4. Conditions not covered by this drawing are subject to further engineering analysis.

**TABLE OF CONTENTS**

SHEET#	DESCRIPTION
1	Typical elevation, design pressures & general notes
2	Horizontal & vertical cross sections
3	Frame anchoring
4	Glazing details
5	Bill of materials & components



OVERALL FRAME DIMENSION	MAX. PANEL DIMENSION	MAX. DOOR D.L.O. DIMENSION	MAX. TRANSOM D.L.O. DIMENSION	GLASS TYPE	DESIGN PRESSURE (PSF)	
					POSITIVE	NEGATIVE
71.85" x 117.67"	35.43" X 77.56"	29.06" X 71.18"	66.73" X 32.91"	G1, G2, G3	+40.0	-40.0



Documents Prepared By: Lyndon F. Schmidt, P.E.  
TEXAS P.E. #104123

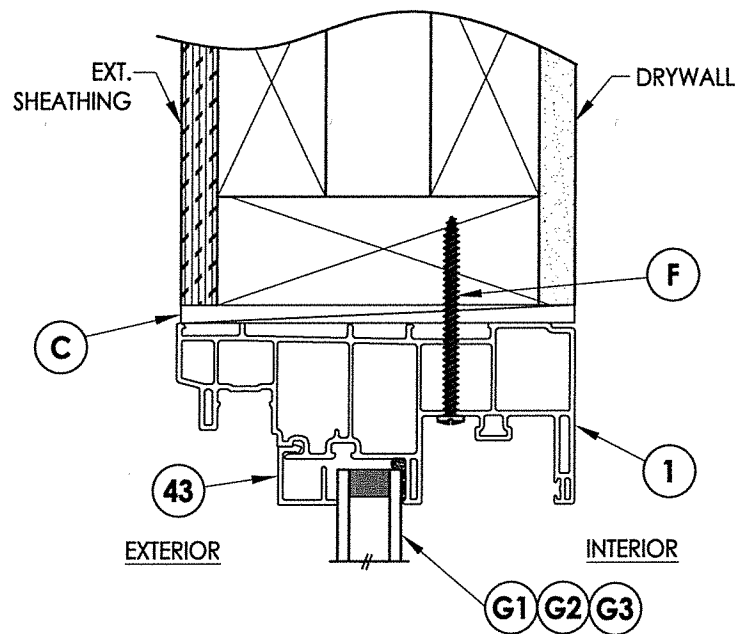
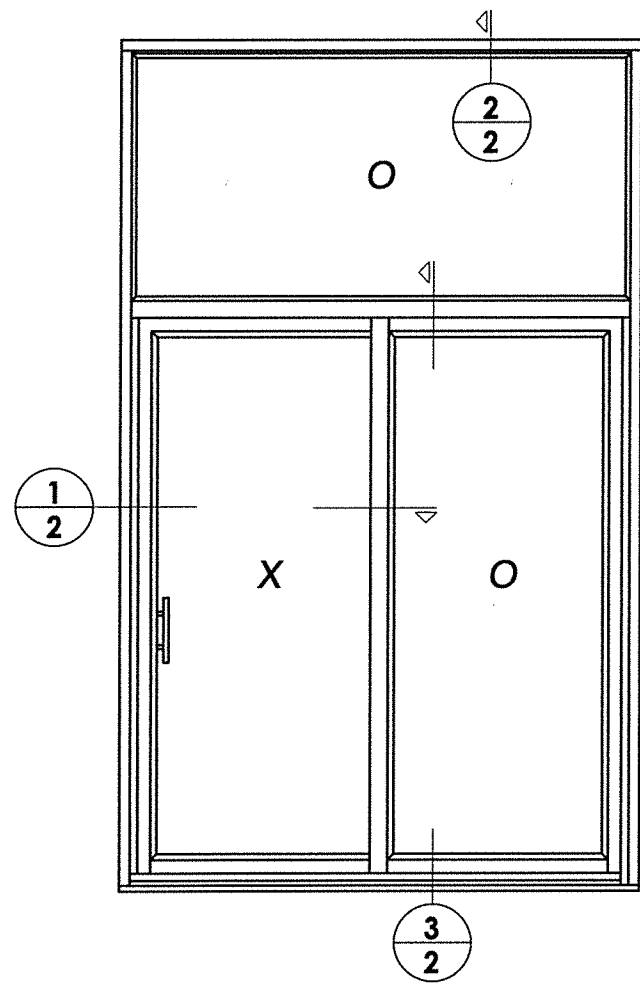
**RW** BUILDING CONSULTANTS, INC.  
P.O. Box 230 Valrico FL 33595  
Phone No.: 813.659.9197

TEXAS BOARD OF PROFESSIONAL ENGINEERS  
CERTIFICATE OF REGISTRATION # F-11852

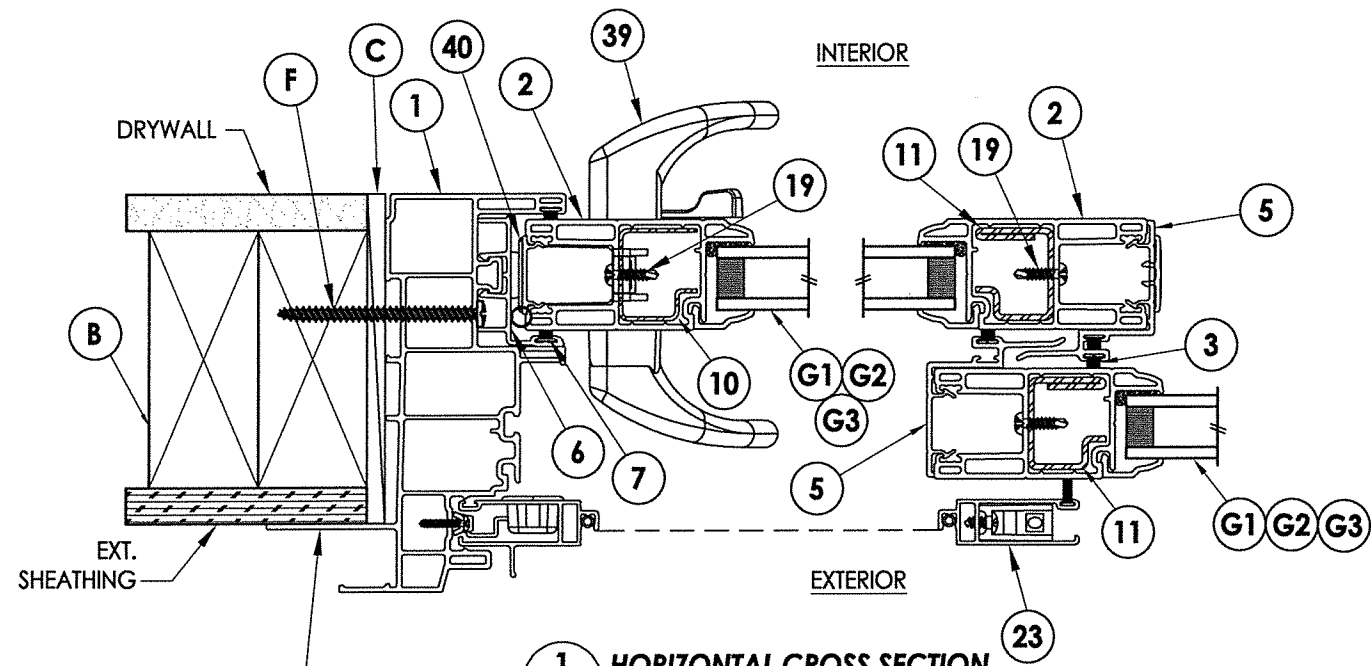
PRODUCT: 400/500 SERIES SLIDING PATIO DOORS  
PART OR ASSEMBLY: TYPICAL ELEVATION, DESIGN PRESSURES & GENERAL NOTES

NO.	DATE	BY	REVISIONS
1	6/10/20	LFS	UPDATE TO 2018 IBC/IRC

DATE: 9/4/14  
SCALE: N.T.S.  
DWG. BY: JK  
CHK. BY: LFS  
DRAWING NO.: TX-4469  
SHEET 1 OF 5



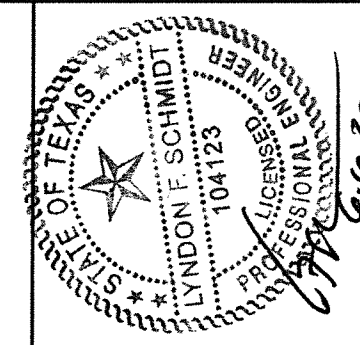
2/2 VERTICAL CROSS SECTION



1/2 HORIZONTAL CROSS SECTION

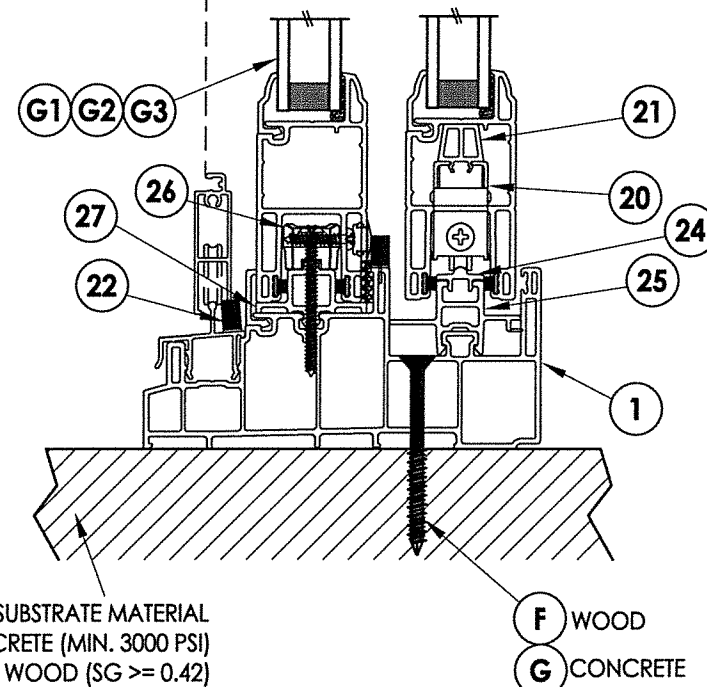
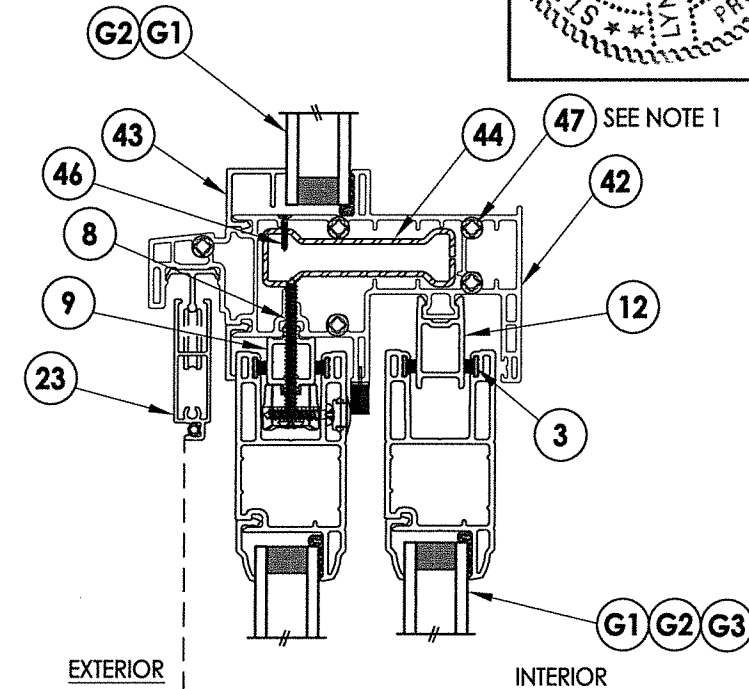
NOTE: Install sealant under fin when optional fin installation is used. Anchor through frame as shown - anchors not required through fin.

- NOTES:  
 1. Attach Horizontal Transom Mullion Frame (Item #42) to Main Frame (Item #1) with (5) #10 x 2-1/2" screws (Item #47) at each end.



Documents Prepared By: Lyndon F. Schmidt, P.E.  
 TEXAS P.E. #104123

**RW** BUILDING CONSULTANTS, INC.  
 P.O. Box 230 Valrico FL 33595  
 Phone No.: 813.659.9197  
 TEXAS BOARD OF PROFESSIONAL ENGINEERS  
 CERTIFICATE OF REGISTRATION # F-11852

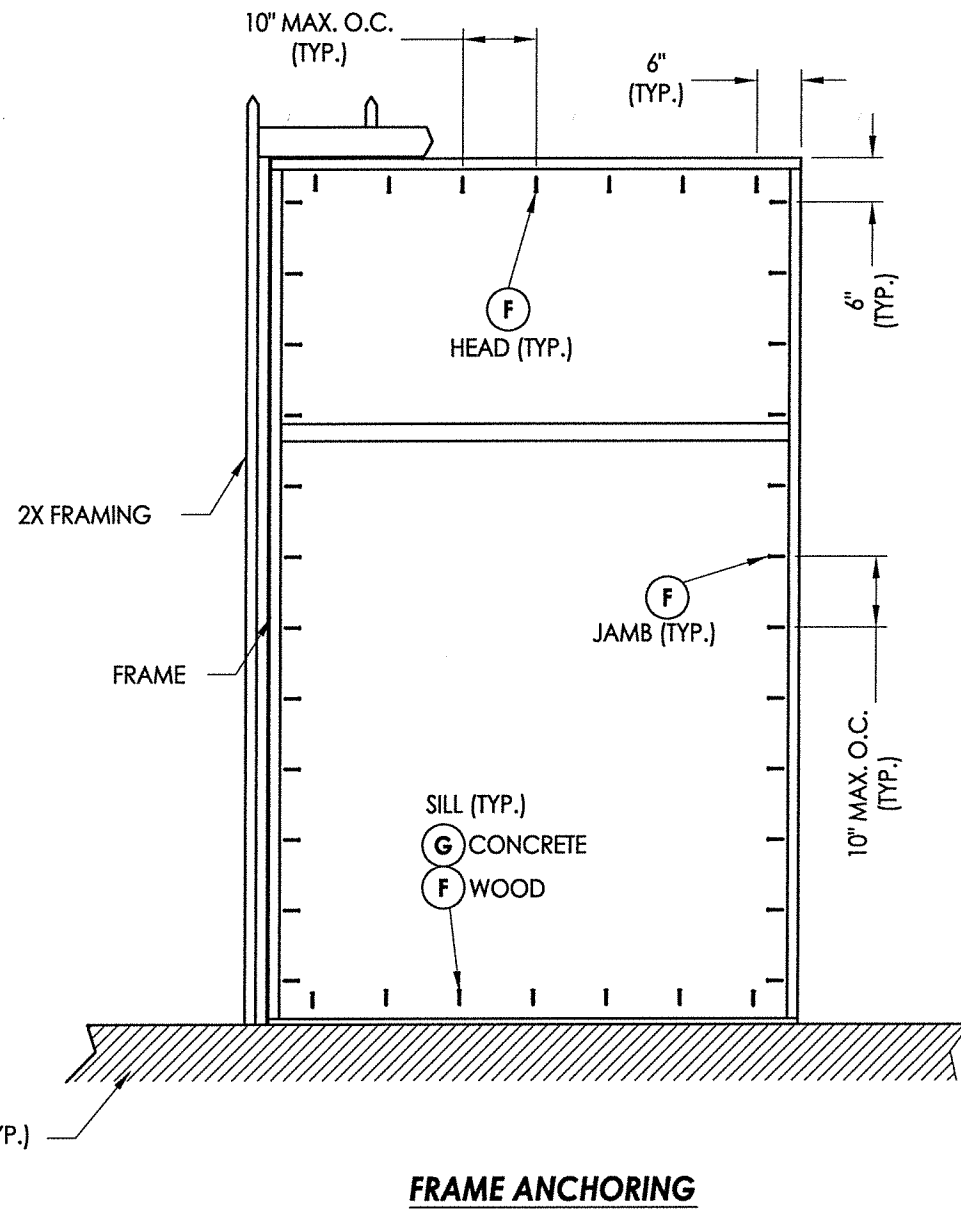


3/2 VERTICAL CROSS SECTION

FLOOR SUBSTRATE MATERIAL  
 CONCRETE (MIN. 3000 PSI)  
 WOOD (SG >= 0.42)

F WOOD  
 G CONCRETE

PRODUCT:	400/500 SERIES SLIDING PATIO DOORS	
PART OR ASSEMBLY:	HORIZONTAL & VERTICAL CROSS SECTIONS	
DATE:	9/4/14	
SCALE:	N.T.S.	
DWG. BY:	JK	
CHK. BY:	LFS	
DRAWING NO.:	TX-4469	
SHEET	2 OF 5	
NO.	DATE	BY
1	6/10/20	LFS
REVISIONS		
UPDATE TO 2018 IBC/IRC		



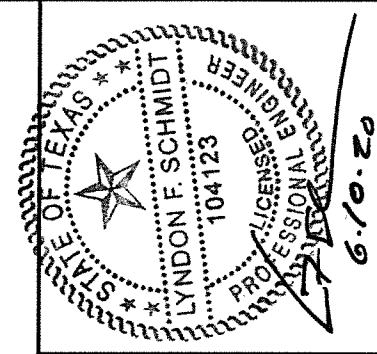
FLOOR SUBSTRATE MATERIAL (TYP.)  
 CONCRETE (MIN. 3000 PSI)  
 WOOD (G >= 0.42)

**FRAME ANCHORING**

**CONCRETE ANCHOR NOTES:**

1. Concrete anchor locations at the corners may be adjusted to maintain the min. edge distance to mortar joints.
2. Concrete anchor locations noted as "MAX. ON CENTER" must be adjusted to maintain the min. edge distance to mortar joints, additional concrete anchors may be required to ensure the "MAX. ON CENTER" dimension are not exceeded.
3. Concrete anchor table:

ANCHOR TYPE	ANCHOR SIZE	MIN. EMBEDMENT	MIN. CLEARANCE TO MASONRY EDGE	MIN. CLEARANCE TO ADJACENT ANCHOR
ITW TAPCON®	1/4"	1-3/4"	1-1/2"	4"
ELCO ULTRACON®	1/4"	1-3/4"	2-1/2"	3"



Documents Prepared By: Lyndon F. Schmidt, P.E.  
 TEXAS P.E. #104123

**RW** BUILDING CONSULTANTS, INC.  
 P.O. Box 230 Vairico FL 33595  
 Phone No.: 813.659.9197

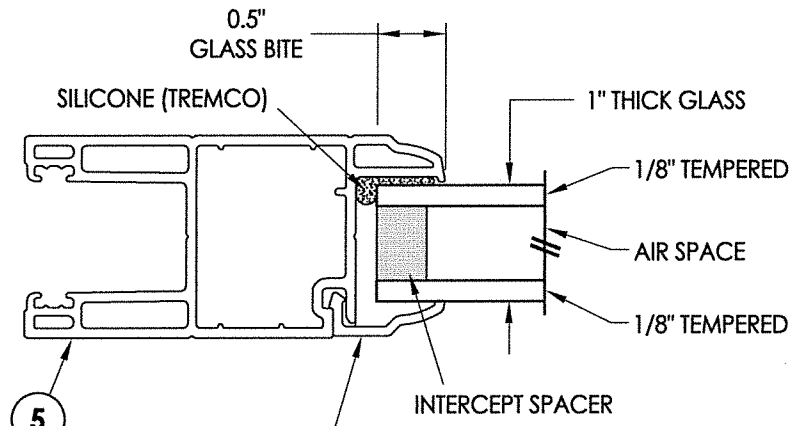
TEXAS BOARD OF PROFESSIONAL ENGINEERS  
 CERTIFICATE OF REGISTRATION # F-11852

PRODUCT: 400/500 SERIES  
 SLIDING PATIO DOORS

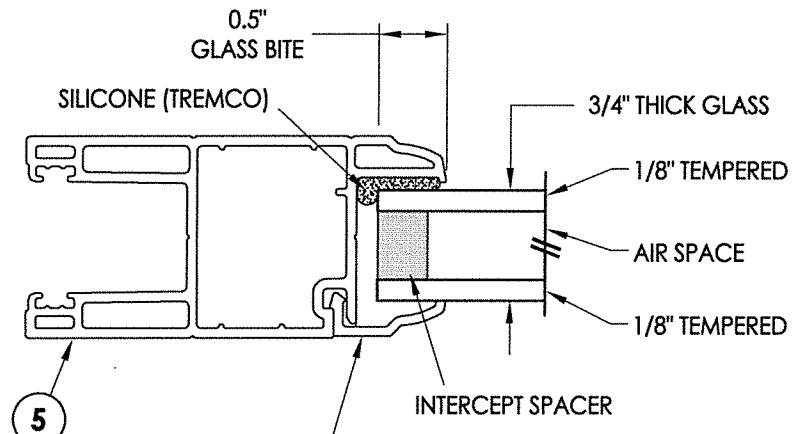
PART OR ASSEMBLY:  
 FRAME ANCHORING

NO.	DATE	REVISIONS
1	6/10/20	UPDATE TO 2018 IBC/IRC
		LFS
		BY

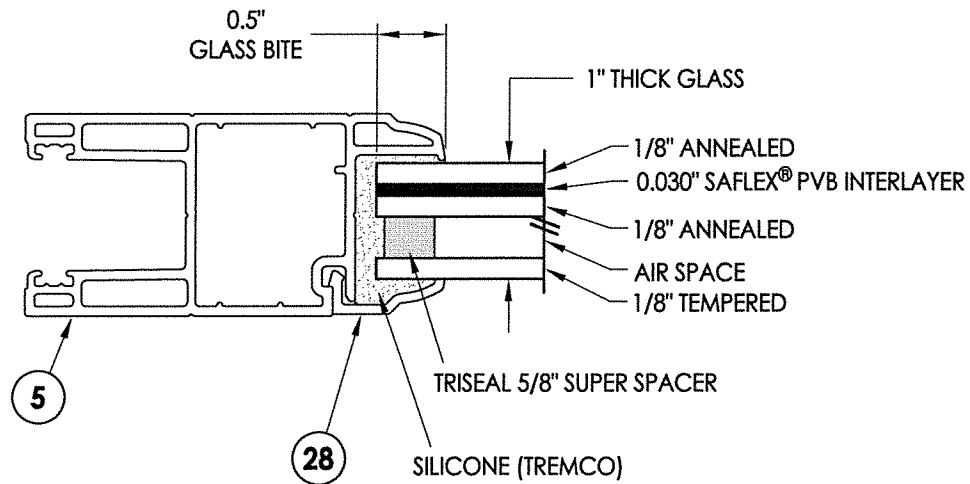
DATE: 9/4/14  
 SCALE: N.T.S.  
 DWG. BY: JK  
 CHK. BY: LFS  
 DRAWING NO.: TX-4469  
 SHEET 3 OF 5



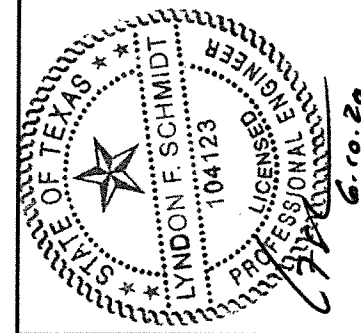
G1 GLAZING DETAIL



G2 GLAZING DETAIL



G3 GLAZING DETAIL



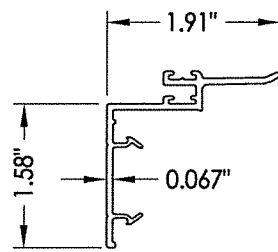
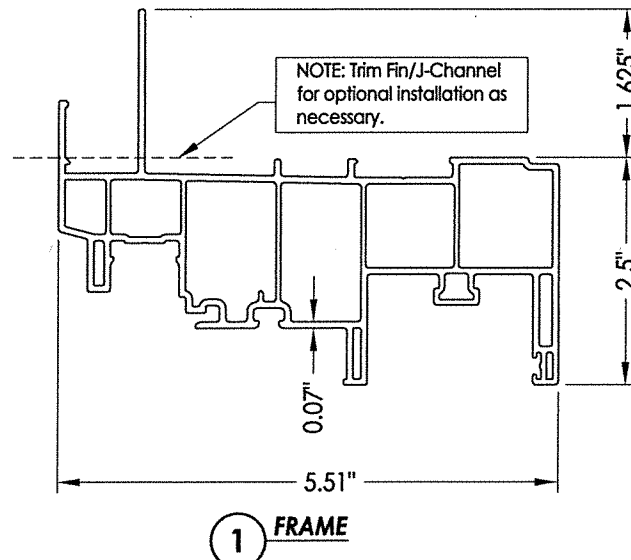
Documents Prepared By: Lyndon F. Schmidt, P.E.  
 TEXAS P.E. #104123

RW BUILDING CONSULTANTS, INC.  
 P.O. Box 230 Vairico FL 33595  
 Phone No.: 813.659.9197  
 TEXAS BOARD OF PROFESSIONAL ENGINEERS  
 CERTIFICATE OF REGISTRATION # F-11852

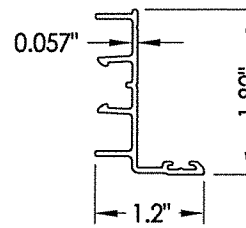
PRODUCT:	400/500 SERIES SLIDING PATIO DOORS	
PART OR ASSEMBLY:	GLAZING DETAILS	
NO.	DATE	BY
1	6/10/20	LFS
UPDATE TO 2018 IBC/IRC		BY
REVISIONS		
DATE:	9/4/14	
SCALE:	N.T.S.	
DWG. BY:	JK	
CHK. BY:	LFS	
DRAWING NO.:	TX-4469	
SHEET	4 OF 5	

BILL OF MATERIALS		
ITEM #	DESCRIPTION	MATERIAL
B	2X FRAMING (SG >= 0.42)	WOOD
C	1/4" MAX. SHIM SPACE	-
F	#10 PPH WOOD SCREW (1-3/8" MIN. EMBEDMENT REQ'D INTO WOOD)	STEEL
G	1/4" ELCO OR ITW CONCRETE SCREW (1-3/4" MIN. EMBEDMENT REQ'D. INTO CONCRETE)	STEEL
1	FRAME*	PVC
2	STILE/RAIL*	PVC
3	WEATHERSTRIP (SCHLEGEL #HF-7522-270)	-
4	GLAZING BEAD*	PVC
5	INTERLOCK*	PVC
6	JAMB TRACK*	PVC
7	WEATHERSTRIP (SCHLEGEL #PB-8420-187)	-
8	#8 X 2" PAN HEAD QUADREX SCREW	STEEL
9	FIXED SUPPORT PANEL*	PVC
10	STILE REINFORCEMENT	STEEL
11	STILE REINFORCEMENT	STEEL
12	HEAD TRACK*	PVC
19	#8 X 5/8" PAN HEAD, SQUARE, SELF-DRILLING SCREW	STEEL
20	TANDEM WHEEL (TRUTH)	-
21	TANDEM WHEEL SHIM*	PVC
22	INSECT STOP	-
23	SCREEN	-
24	SLIDING PANEL RAIL	ALUM
25	OPERATING PANEL SUPPORT*	PVC
26	FIXED SASH ANCHOR BLOCK	-
27	FIXED PANEL SUPPORT*	PVC
39	HANDLE KIT	STEEL
40	MORTISE LOCK KIT/KEEPER	S.S.
42	TRANSOM FRAME MULLION*	PVC
43	TRANSOM GLAZING BEAD*	PVC
44	TRANSOM MULLION REINFORCEMENT	STEEL
46	#7 X 1/2" FLAT HEAD SELF-DRILLING QUADREX SCREW	STEEL
47	#10 X 2-1/2" FLAT HEAD QUADREX WOOD SCREW	STEEL

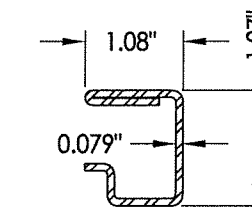
\* THE APPROVED WHITE RIGID PVC EXTRUSIONS FOR WINDOWS ARE TO BE PRODUCED BY EXTRUDERS LICENSEES IN "CERTIFICATION PROGRAMS FOR RIGID PVC EXTRUSIONS".



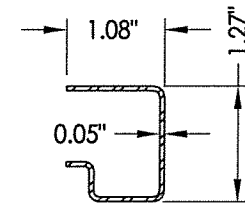
5 INTERLOCK



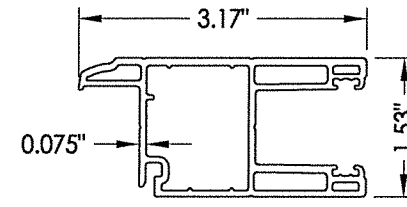
6 JAMB TRACK



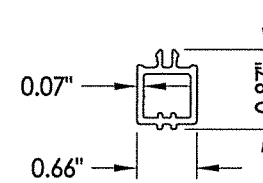
10 STILE REINFORCEMENT



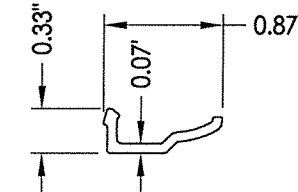
11 STILE REINFORCEMENT



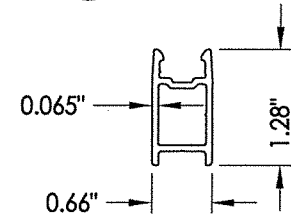
2 STILE/RAIL



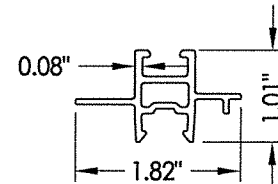
9 FIXED SUPPORT PANEL



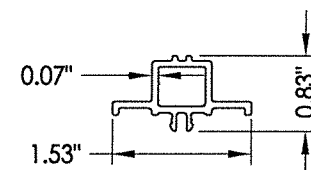
4 GLAZING BEAD



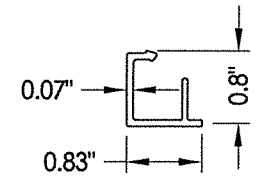
12 HEAD TRACK



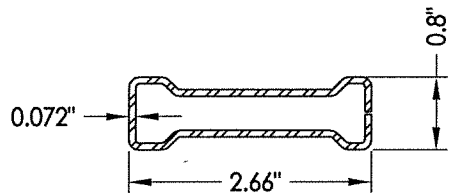
25 OPERATING PANEL SUPPORT



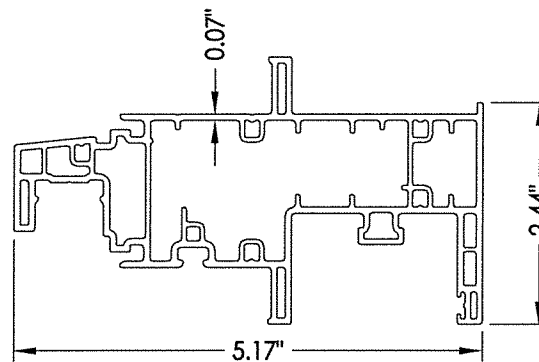
27 FIXED PANEL SUPPORT



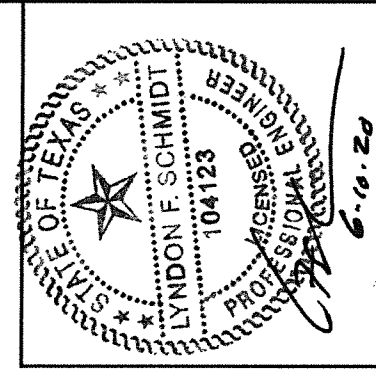
43 TRANSOM GLAZING BEAD



44 TRANSOM MULLION REINFORCEMENT



42 TRANSOM FRAME MULLION



Documents Prepared By: Lyndon F. Schmidt, P.E.  
TEXAS P.E. #104123

**RW** BUILDING CONSULTANTS, INC.  
P.O. Box 230 Valrico FL 33595  
Phone No.: 813.659.9197  
TEXAS BOARD OF PROFESSIONAL ENGINEERS  
CERTIFICATE OF REGISTRATION # F-11852

PRODUCT: 400/500 SERIES SLIDING PATIO DOORS  
PART OR ASSEMBLY: BILL OF MATERIALS & COMPONENTS

NO.	DATE	REVISIONS
1	6/10/20	UPDATE TO 2018 IBC/IRC
		LFS
		BY

DATE: 9/4/14  
SCALE: N.T.S.  
DWG. BY: JK  
CHK. BY: LFS  
DRAWING NO.: TX-4469  
SHEET 5 OF 5