

# plastpro

5200 W. CENTURY BLVD.  
LOS ANGELES, CA 90045

## OPAQUE FIBERGLASS SINGLE DOOR IN SWING / OUT SWING "NON-IMPACT"

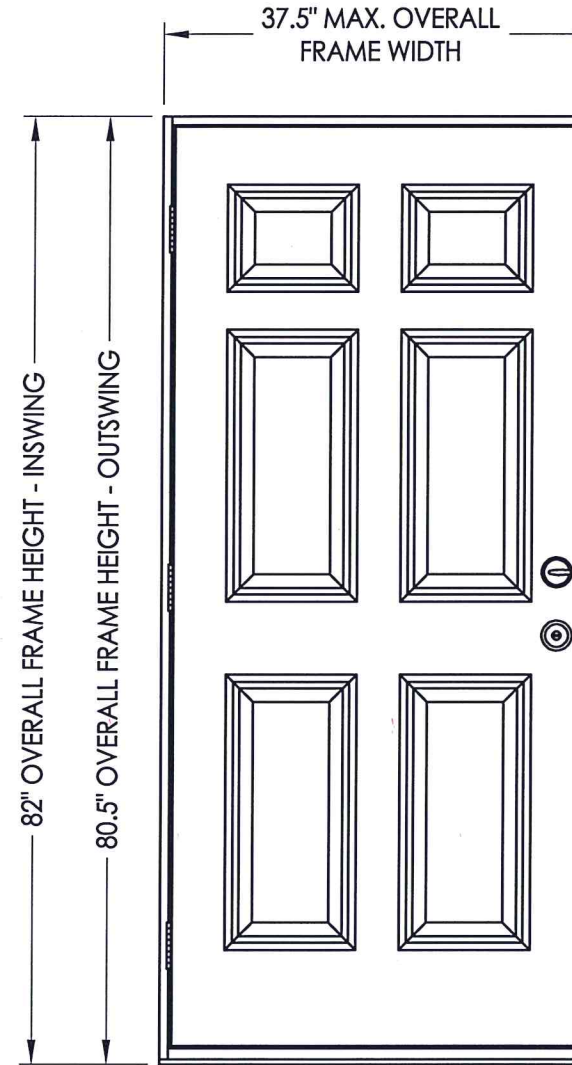
### EVALUATED FOR USE IN THE STATE OF TEXAS

The Fiberglass Door system described herein complies with the 2018 International Residential Code (IRC), Sections R301 & R609 and the 2018 International Building Code (IBC), Sections 1404.13, 1609, 1709.5, 2403 and 2404 subject to the following conditions:

1. Anchors shall be as listed and spaced as shown in the details. Anchor embedment to base material shall be beyond wall dressing or stucco.
2. When used in areas requiring wind-borne debris protection this product is required to be protected with an impact resistant covering that complies with Section R301.2.1.2 of the IRC and Section 1609.1.2 of the IBC.
3. Allowable design pressure requirements must be equal to or less than the design pressure rating shown in the design pressure chart, sheet 1 of this drawing.
4. Conditions not covered by this drawing are subject to further engineering analysis.

TABLE OF CONTENTS

SHEET #	DESCRIPTION
1	Typical elevation, design pressures, & general notes
2	Door panel details
3	Horizontal cross sections
4	Vertical cross sections
5	Buck and frame anchoring
6	Bill of materials & components



CONFIGURATION	MAX. FRAME DIMENSION	DESIGN PRESSURE (PSF) INSWING		DESIGN PRESSURE (PSF) OUTSWING	
		POSITIVE	NEGATIVE	POSITIVE	NEGATIVE
X	37.5" x 82.0"	+70.0	-70.0	+70.0	-70.0



Documents Prepared By: Lyndon F. Schmidt, P.E.  
TEXAS P.E. #104123

**RW** BUILDING CONSULTANTS, INC.  
P.O. Box 230 Valrico FL 33595  
Phone No.: 813.659.9197

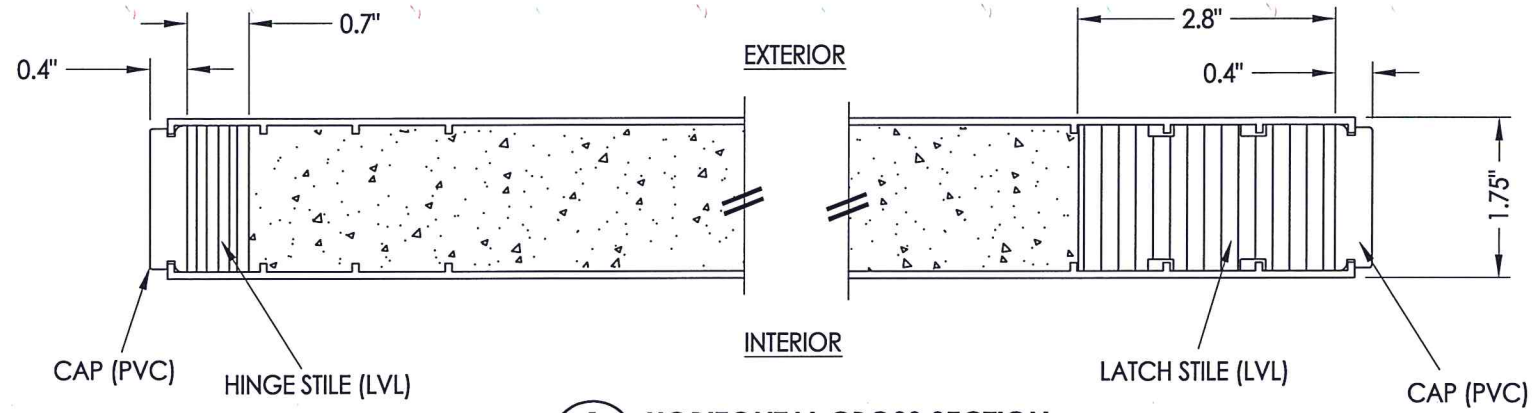
TEXAS BOARD OF PROFESSIONAL ENGINEERS  
CERTIFICATE OF REGISTRATION # F-11852

PRODUCT: PLASTPRO INC. FIBERGLASS DOOR  
PART OR ASSEMBLY: TYPICAL ELEVATION, DESIGN PRESSURES & GENERAL NOTES

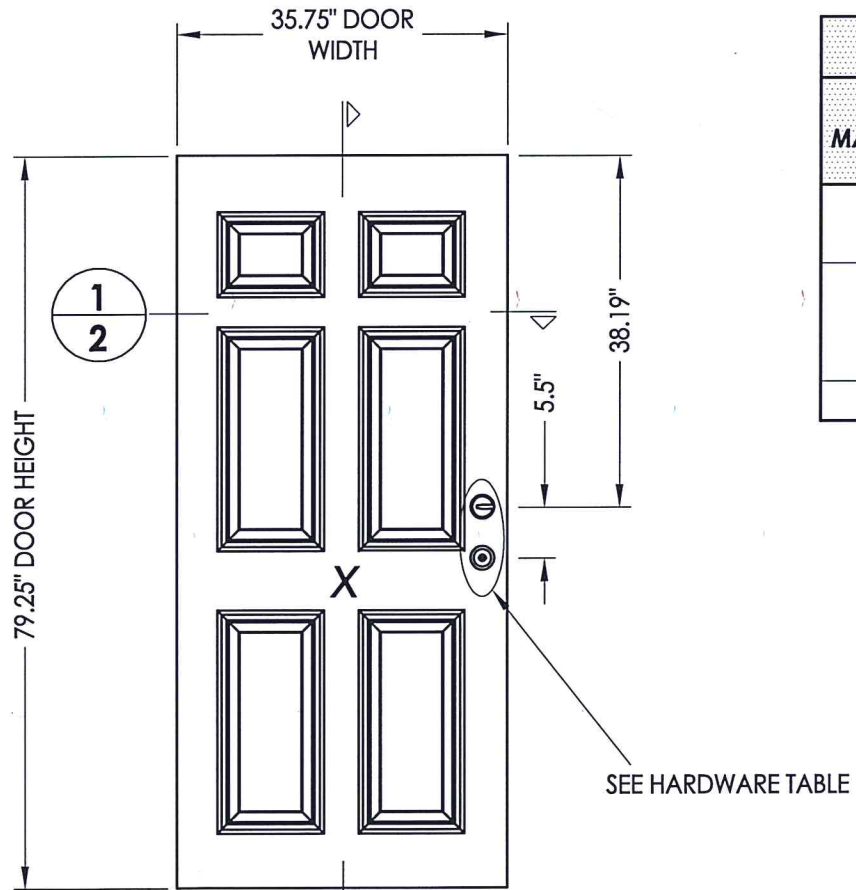
NO.	DATE	DESCRIPTION
1	5/27/20	UPDATE TO 2018 IBC/IRC CODE

DATE: 1/17/11  
SCALE: N.T.S.  
DWG. BY: JK  
CHK. BY: LFS  
DRAWING NO.: TX-4114  
SHEET 1 OF 6

R:\Clients\Plastpro, Inc PERMANENT\B - TD\Hinged Doors - Fiberglass (Non-Impact)\C - Drawings\TX-4114.dwg, 2.1

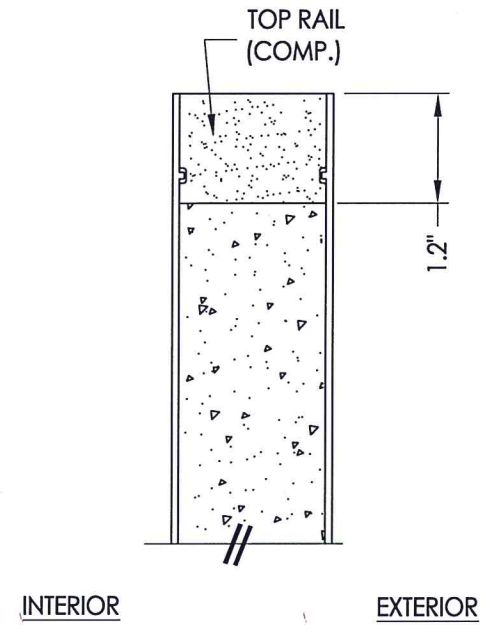


**1**  
**2** **HORIZONTAL CROSS SECTION**

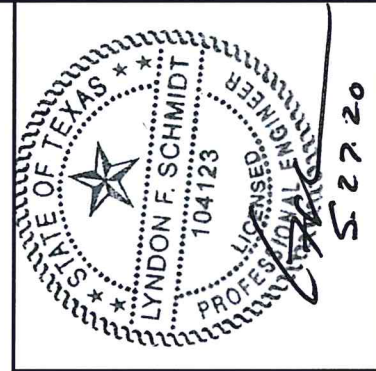


**40** **DOOR PANEL**  
Plastpro  
Fiberglass

HARDWARE TABLE			
MANUFACTURER	MODEL	MAX. DESIGN PRESSURE (PSF)	
		POSITIVE	NEGATIVE
KWIKSET	KNOB: SIGNATURE SERIES DEADBOLT: SIGNATURE SERIES (780)	+70.0	-70.0
SCHLAGE	KNOB: "F" SERIES (F10) LEVER: "F" SERIES (F10) DEADBOLT: "B" SERIES (B60/62)	+45.0	-45.0
SCHLAGE	HANDLE SET W/DEADBOLT: "F" SERIES (F60)	+45.0	-45.0



**2**  
**2** **VERTICAL CROSS SECTION**



Documents Prepared By: Lyndon F. Schmidt, P.E.  
TEXAS P.E. #104123

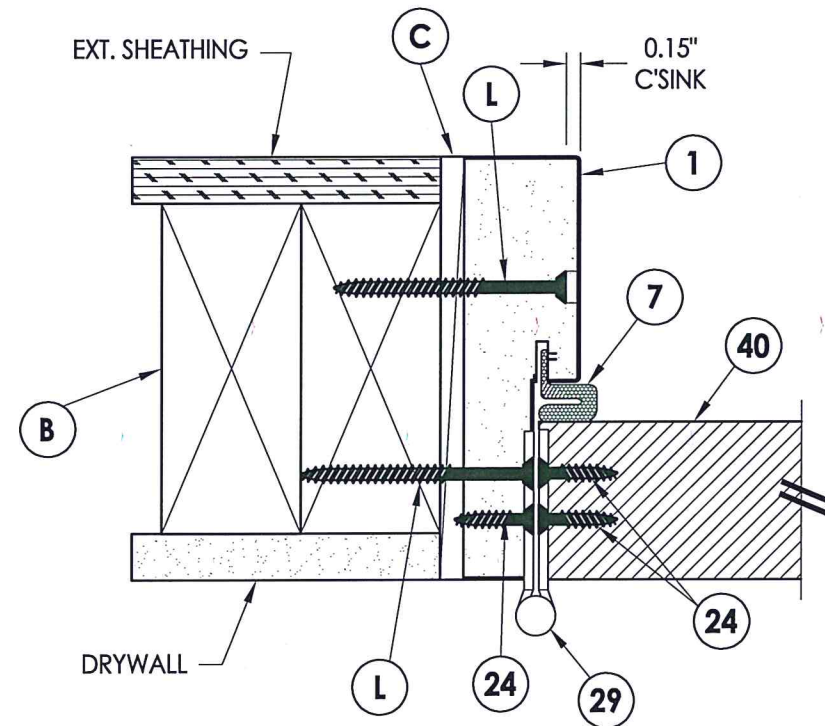
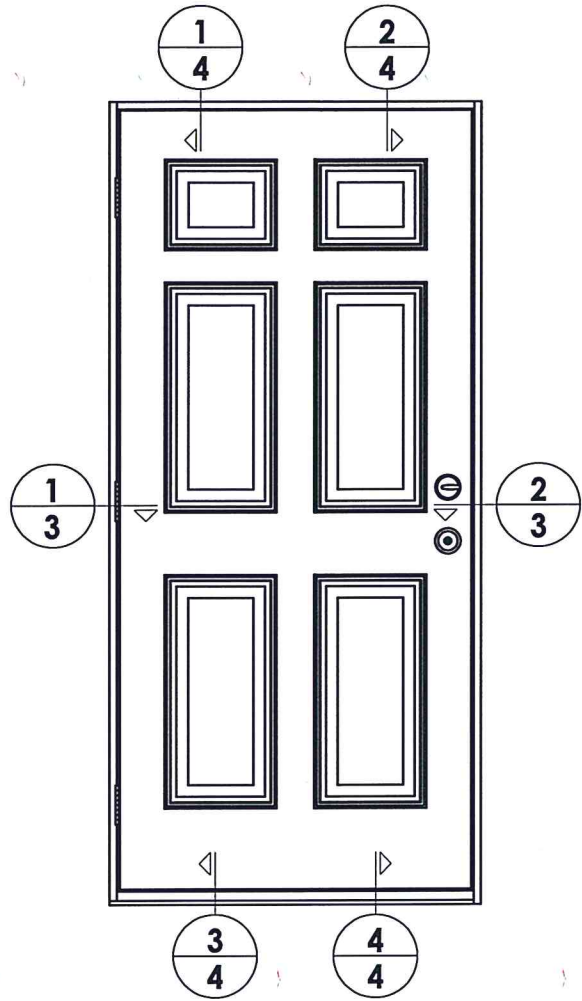
**RW** BUILDING CONSULTANTS, INC.  
P.O. Box 230 Valrico FL 33595  
Phone No.: 813.659.9197  
TEXAS BOARD OF PROFESSIONAL ENGINEERS  
CERTIFICATE OF REGISTRATION # F-11852

PRODUCT: PLASTPRO FIBERGLASS DOOR  
PART OR ASSEMBLY: DOOR PANEL DETAILS

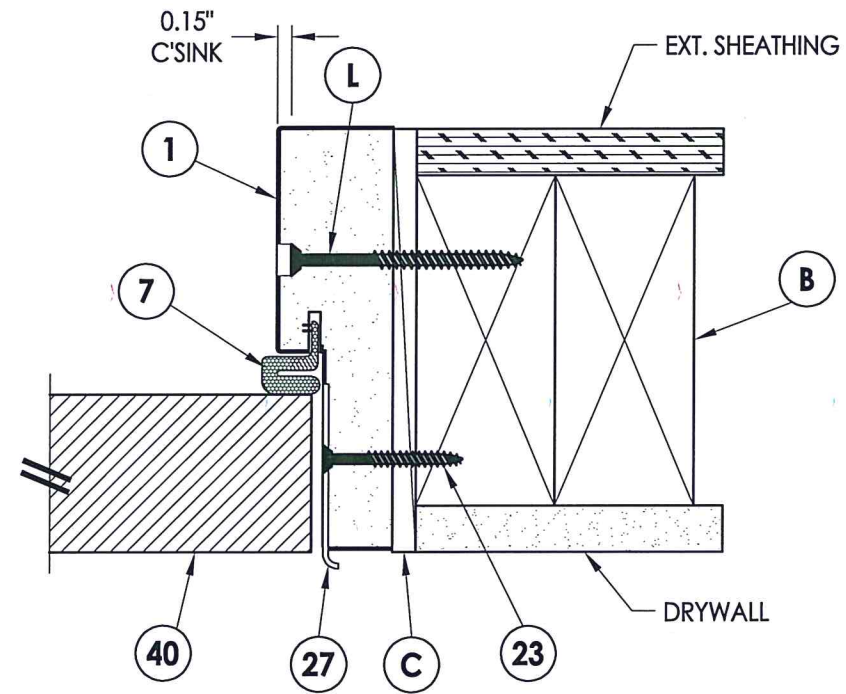
NO.	DATE	REVISIONS
1	5/27/20	UPDATE TO 2018 IBC/IRC CODE
LFS		
BY		

DATE: 1/17/11  
SCALE: N.T.S.  
DWG. BY: JK  
CHK. BY: LFS  
DRAWING NO.: TX-4114  
SHEET 2 OF 6

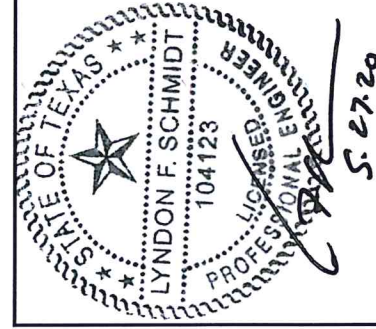
R:\Clients\Plastpro, Inc PERMANENT\B - TD\Hinged Doors - Fiberglass\DR - 637 Opaque Fiberglass (Non-Impact)\C - Drawings\TX-4114.dwg, 3.1



**1** HORIZONTAL CROSS SECTION  
**3** Inswing shown - outswing also approved



**2** HORIZONTAL CROSS SECTION  
**3** Inswing shown - outswing also approved

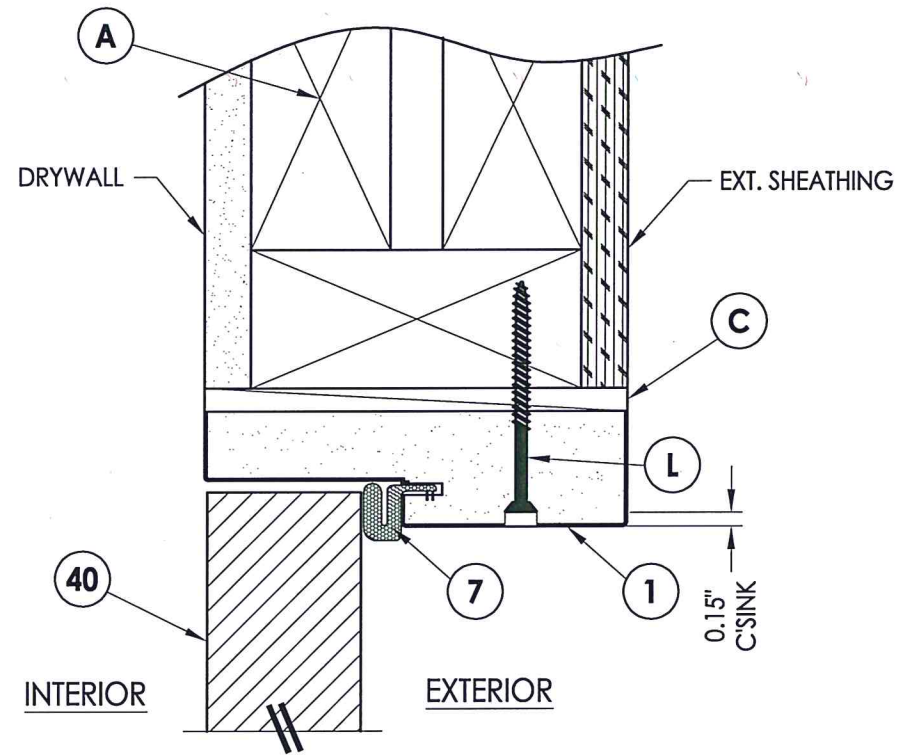


Documents Prepared By: Lyndon F. Schmidt, P.E.  
TEXAS P.E. #104123

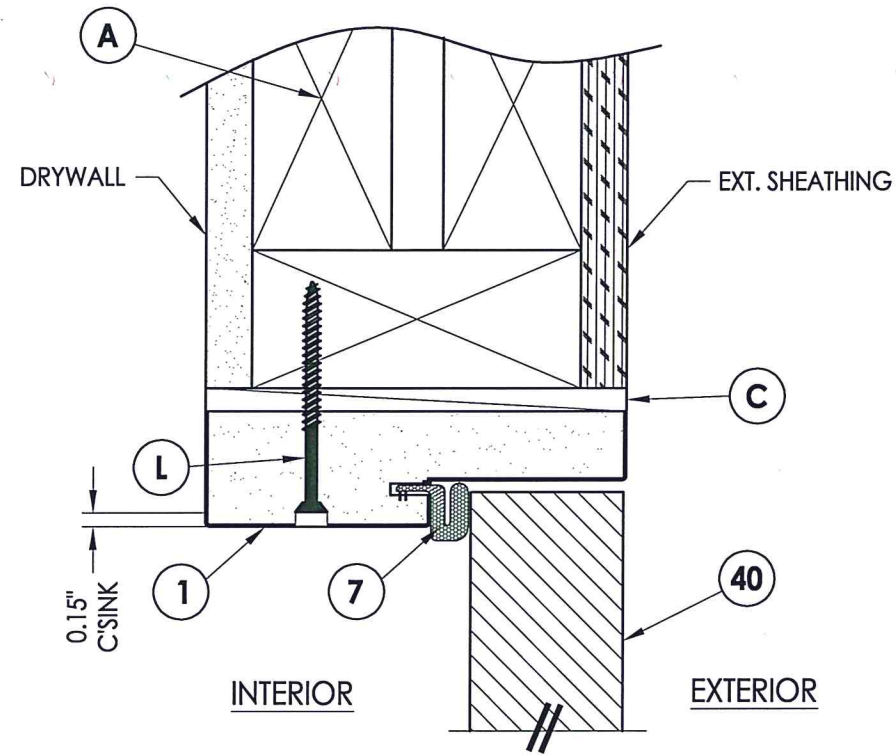
**RW** BUILDING CONSULTANTS, INC.  
P.O. Box 230 Vairico FL, 33595  
Phone No.: 813.659.9197  
TEXAS BOARD OF PROFESSIONAL ENGINEERS  
CERTIFICATE OF REGISTRATION # F-11852

PRODUCT:	PLASTPRO INC. FIBERGLASS DOOR	
PART OR ASSEMBLY:	HORIZONTAL CROSS SECTIONS	
DATE:	1/17/11	
SCALE:	N.T.S.	
DWG. BY:	JK	
CHK. BY:	LFS	
DRAWING NO.:	TX-4114	
SHEET	3 OF 6	
NO.	DATE	REVISIONS
1	5/27/20	UPDATE TO 2018 IBC/IRC CODE
		LFS
		BY

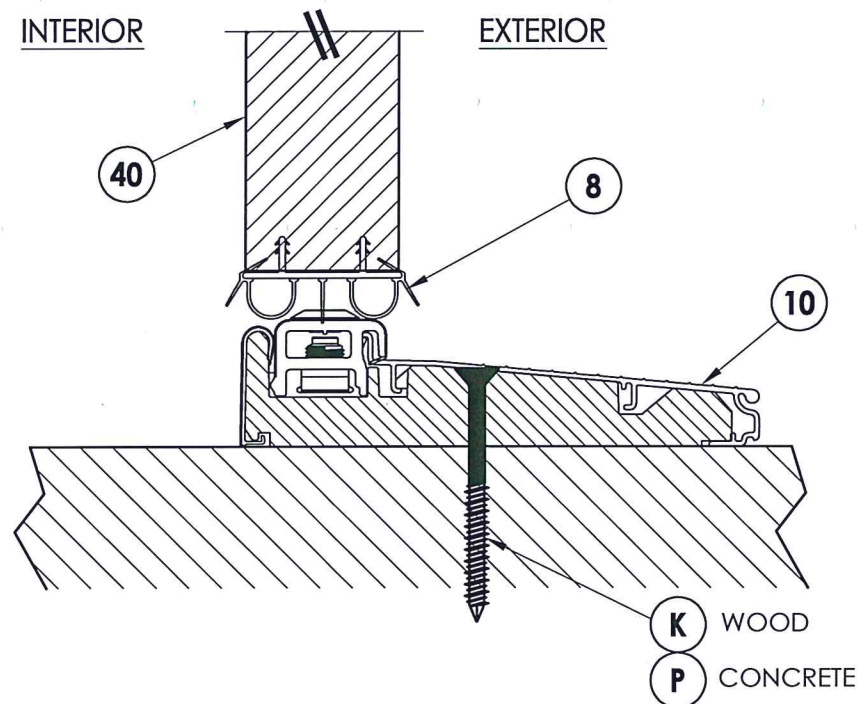
R:\Clients\Plastpro, Inc PERMANENT\B - TD\Hinged Doors - Fiberglass (DR - 637 Opaque Fiberglass (Non-Impact))\C - Drawings\TX-4114.dwg, 4.1



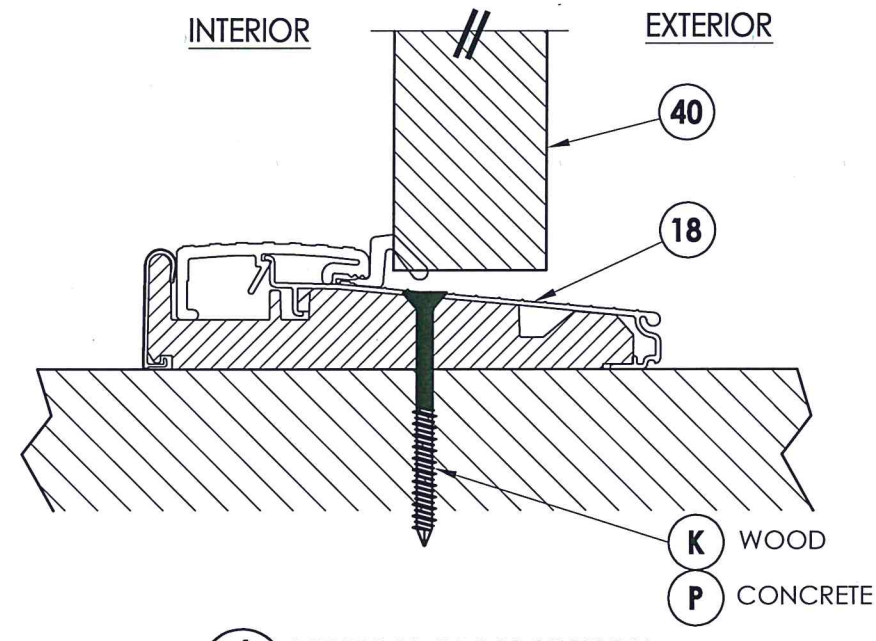
**1** VERTICAL CROSS SECTION  
**4** Inswing shown



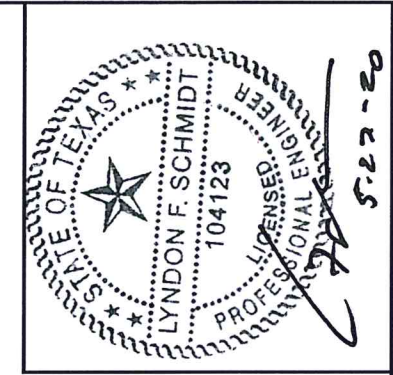
**2** VERTICAL CROSS SECTION  
**4** Outswing shown



**3** VERTICAL CROSS SECTION  
**4** Inswing shown



**4** VERTICAL CROSS SECTION  
**4** Outswing shown



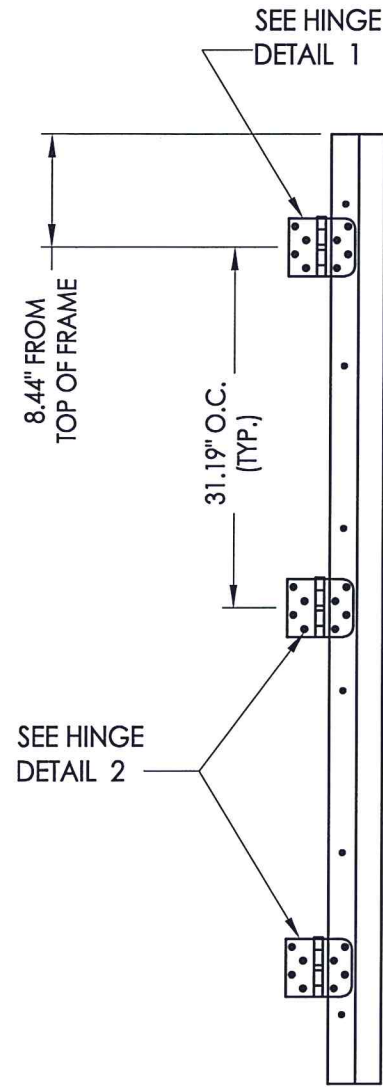
Documents Prepared By: Lyndon F. Schmidt, P.E.  
 TEXAS P.E. #104123

**RW** BUILDING CONSULTANTS, INC.  
 P.O. Box 230 Valrico FL 33595  
 Phone No.: 813.659.9197  
 TEXAS BOARD OF PROFESSIONAL ENGINEERS  
 CERTIFICATE OF REGISTRATION # F-11852

PRODUCT: PLASTPRO FIBERGLASS DOOR  
 PART OR ASSEMBLY: VERTICAL CROSS SECTIONS

NO.	DATE	DESCRIPTION	BY
1	5/27/20	UPDATE TO 2018 IBC/IRC CODE	LFS

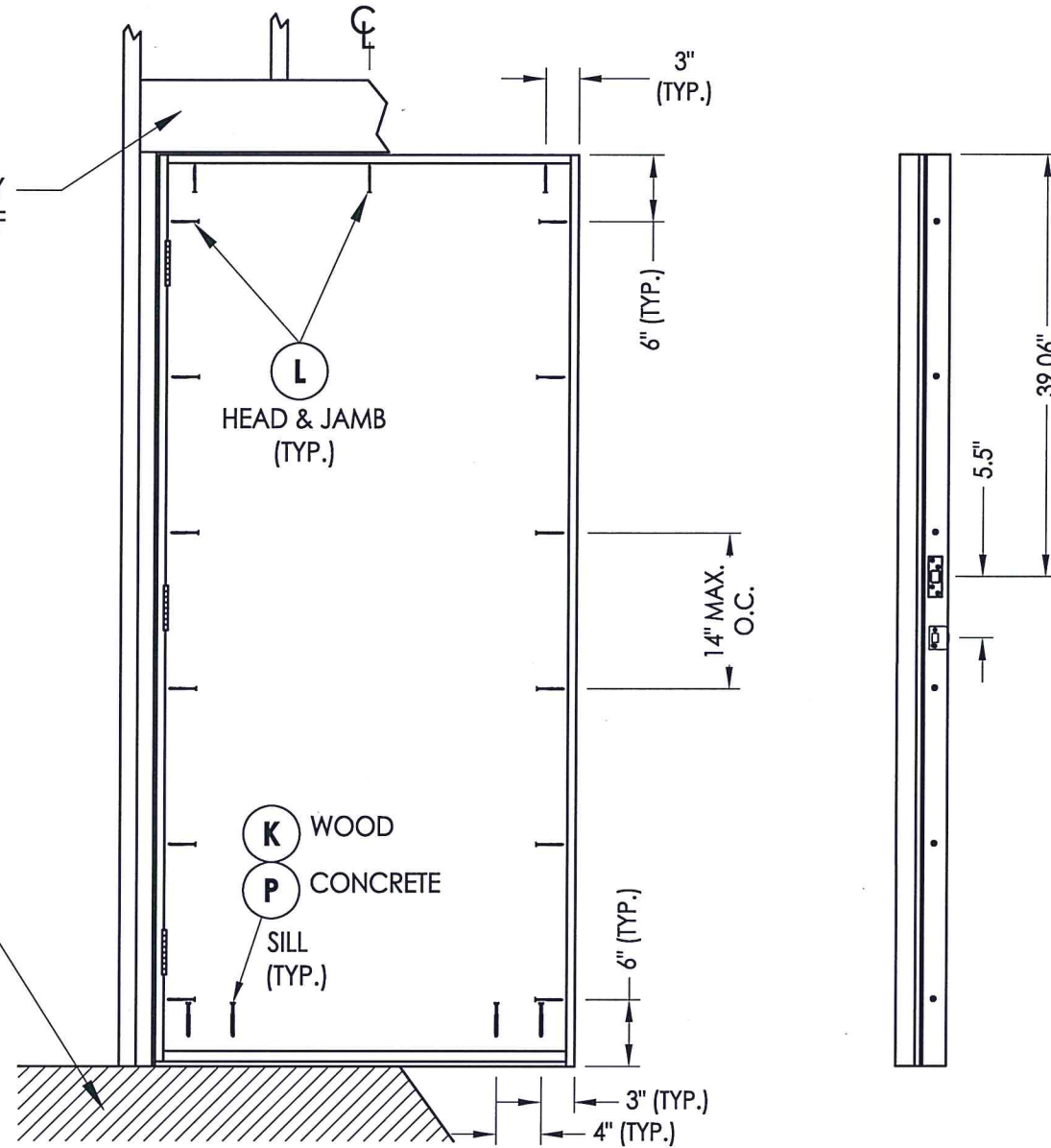
DATE: 1/17/11  
 SCALE: N.T.S.  
 DWG. BY: JK  
 CHK. BY: LFS  
 DRAWING NO.: TX-4114  
 SHEET 4 OF 6



**HINGE JAMB**

2X FRAMING TO BE DESIGNED BY THE ENGINEER OR ARCHITECT OF RECORD

FLOOR SUBSTRATE MATERIAL  
CONCRETE (MIN. 3000 PSI)  
WOOD (S.G. >= 0.42)



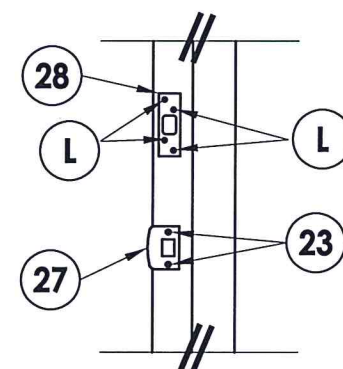
**FRAME ANCHORING**

**STRIKE JAMB**

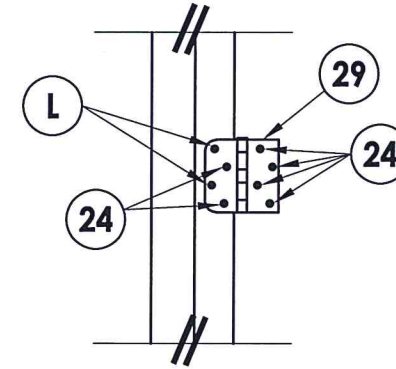
**CONCRETE ANCHOR NOTES:**

1. Substitution of equal concrete anchors from a different supplier may have different edge distance and center distance requirements.
2. Concrete anchor locations at the corners may be adjusted to maintain the min. edge distance to mortar joints. Concrete anchor locations noted as "MAX. ON CENTER" must be adjusted to maintain the min. edge distance to mortar joints, additional concrete anchors may be required to ensure the "MAX. ON CENTER" dimension are not exceeded.
3. Concrete anchor table:

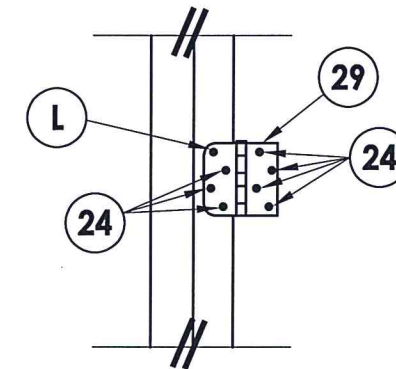
ANCHOR TYPE	ANCHOR SIZE	MIN. EMBEDMENT	MIN. CLEARANCE TO MASONRY EDGE	MIN. CLEARANCE TO ADJACENT ANCHOR
ITW	1/4"	1-1/4"	2-1/2"	3"
ELCO	1/4"	1-1/4"	1"	4"
ITW	3/16"	1-1/4"	2-5/8"	1-1/8"



**LATCH & DEADBOLT DETAIL**



**HINGE DETAIL 1**



**HINGE DETAIL 2**



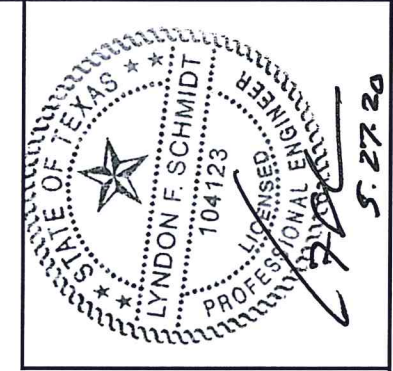
Documents Prepared By: Lyndon F. Schmidt, P.E.  
TEXAS P.E. #104123

**RW** BUILDING CONSULTANTS, INC.  
P.O. Box 230 Valrico FL 33595  
Phone No.: 813.659.9197

© 2011 R.W. BUILDING CONSULTANTS INC.

PRODUCT:		PLASTPRO INC. FIBERGLASS DOOR	
PART OR ASSEMBLY:		BUCK AND FRAME ANCHORING	
NO.	DATE	UPDATE TO 2018 IBC/IRC CODE	BY
1	5/27/20		LFS
REVISIONS			
DATE: 1/17/11			
SCALE: N.T.S.			
DWG. BY: JK			
CHK. BY: LFS			
DRAWING NO.: TX-4114			
SHEET 5 OF 6			

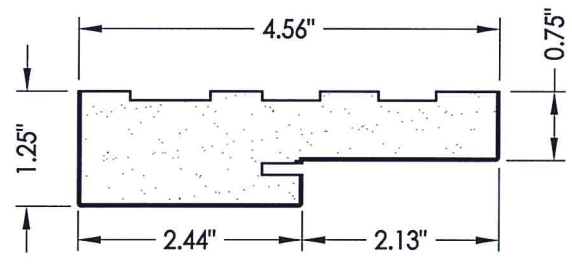
BILL OF MATERIALS		
ITEM #	DESCRIPTION	MATERIAL
A	2X HEADER FRAMING (SG >= 0.42)	WOOD
B	2X BUCK (SG >= 0.42)	WOOD
C	1/4" MAX. SHIM SPACE	-
L	#10 X 2-1/2" PFH WOOD SCREW (1.15" MIN. EMBEDMENT)	STEEL
K	#10 X 3" PFH WOOD SCREW	STEEL
P	1/4" PFH ELCO OR ITW CONCRETE SCREW (1-3/4" MIN. EMB.)	STEEL
1	POLY FIBER JAMB	COMP.
2	WOOD JAMB (FINGER JOINTED PINE)	WOOD
7	FORCE 5 WEATHER STRIPPING BY ENDURA	FOAM
8	SWEEP	VINYL
10	INSWING THRESHOLD	ALUM/COMP
18	OUTSWING THRESHOLD	ALUM/COMP
23	#8 X 1-1/2" PFH WOOD SCREW	STEEL
24	#9 X 3/4" PFH WOOD SCREW	STEEL
27	LATCH STRIKE PLATE	STEEL
28	DEADBOLT STRIKE PLATE (SECURITY STRIKE)	STEEL
29	4" X 4" HINGE	STEEL
40	DOOR PANEL	-



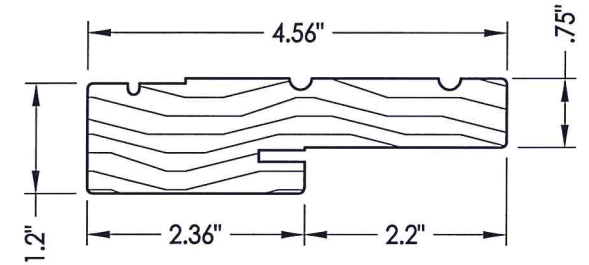
Documents Prepared By: Lyndon F. Schmidt, P.E.  
TEXAS P.E. #104123

**RW** BUILDING CONSULTANTS, INC.  
P.O. Box 230 Valrico FL 33595  
Phone No.: 813.659.9197

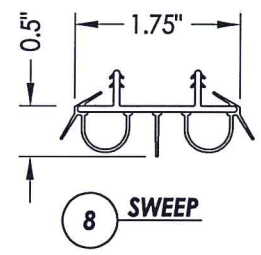
TEXAS BOARD OF PROFESSIONAL ENGINEERS  
CERTIFICATE OF REGISTRATION # F-11852



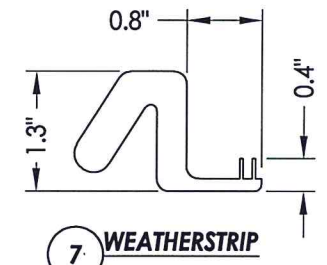
1 POLY FIBER JAMB



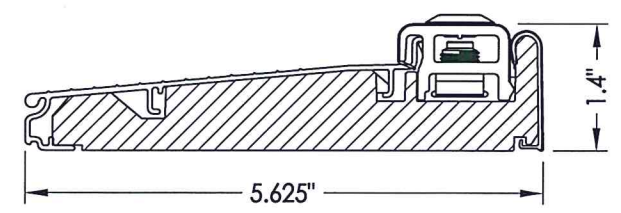
2 WOOD JAMB



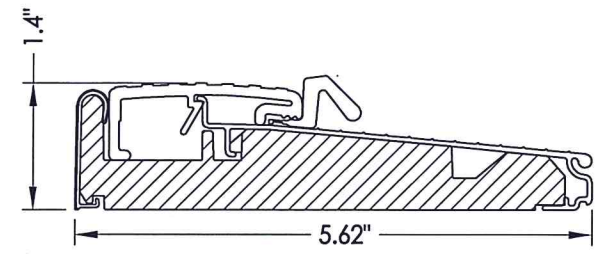
8 SWEEP



7 WEATHERSTRIP



10 INSWING THRESHOLD  
By PLASTPRO



18 OUTSWING THRESHOLD  
By Endura

PRODUCT: PLASTPRO INC.  
FIBERGLASS DOOR

PART OR ASSEMBLY: BILL OF MATERIALS & COMPONENTS

NO.	DATE	DESCRIPTION	LFS	BY
1	5/27/20	UPDATE TO 2018 IBC/IRC CODE	LFS	BY

REVISIONS

DATE: 1/17/11  
SCALE: N.T.S.  
DWG. BY: JK  
CHK. BY: LFS  
DRAWING NO.: TX-4114  
SHEET 6 OF 6