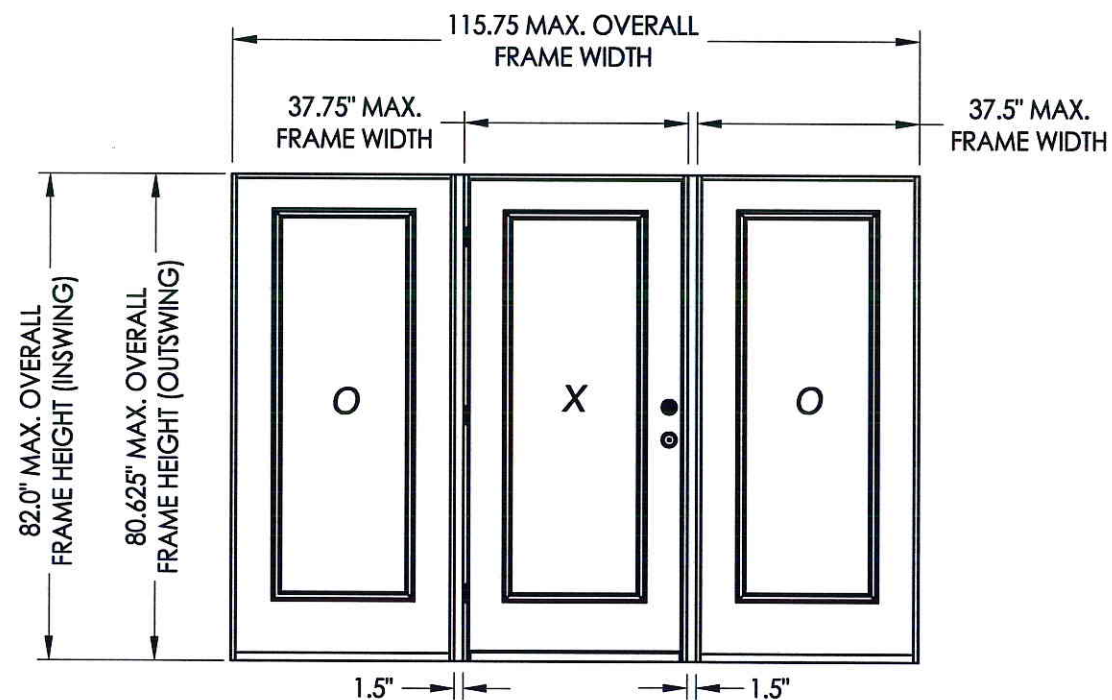
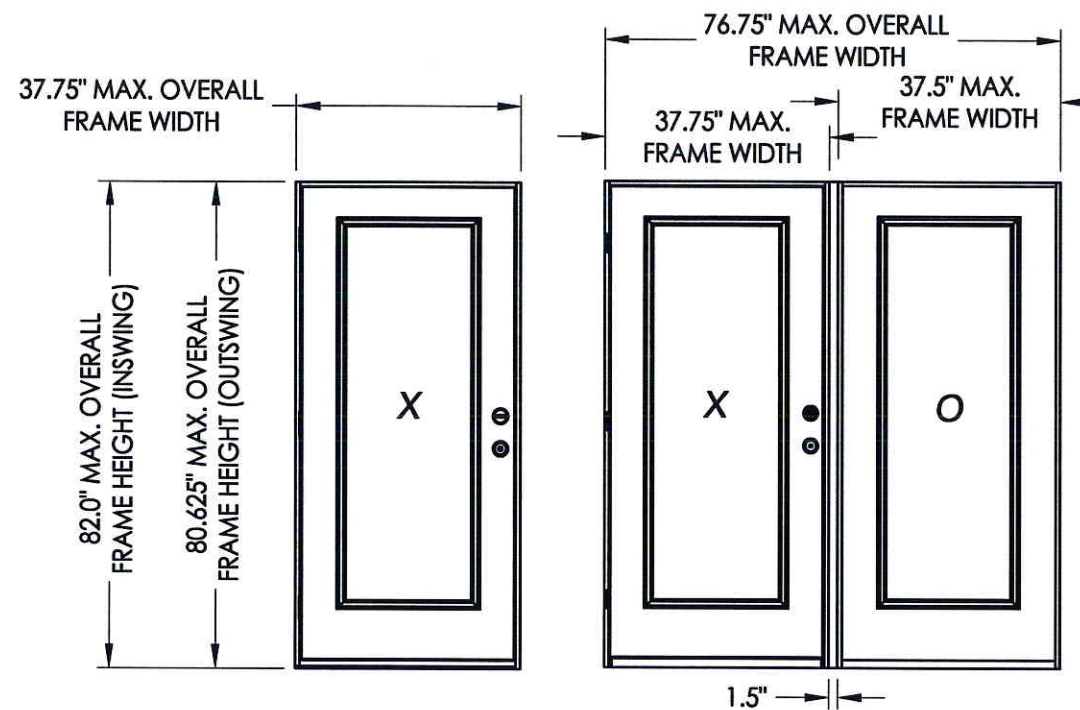


**Distributed by: Guardian Building Products**  
 7603 Prairie Oak Drive  
 Building 6, Suite 100  
 Houston, TX 77086

## FIBERGLASS ENTRY DOOR INSWING / OUTSWING "IMPACT"



CONFIGURATION	MAX. FRAME DIMENSION	DESIGN PRESSURE (PSF) INSWING		DESIGN PRESSURE (PSF) OUTSWING	
		POSITIVE	NEGATIVE	POSITIVE	NEGATIVE
X	37.75" x 82.0"	+45.0	-50.0	+45.0	-45.0
OX/XO	76.75" x 82.0"	+45.0	-50.0	+45.0	-45.0
OXO	115.75" x 82.0"	+45.0	-50.0	+45.0	-45.0

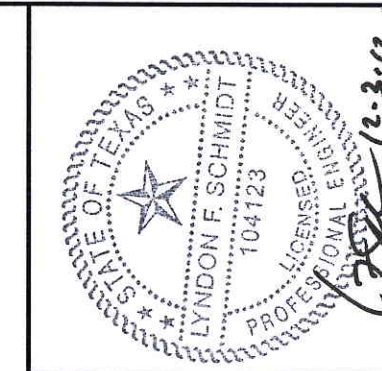
### EVALUATED FOR USE IN THE STATE OF TEXAS

The Fiberglass Glazed Door described herein complies with the 2006 International Residential Code (IRC), Sections R301 & R613 and the 2006 International Building Code (IBC), Sections 1405.12, 1609, 1714.5, 2403 and 2404 (including Texas revisions) subject to the following conditions:

1. Anchors shall be as listed and spaced as shown in the details. Anchor embedment to base material shall be beyond wall dressing or stucco.
2. This system has been tested and evaluated as a large missile impact protective system for installation in the Seaward, Inland I and Inland II areas. This product meets missile level "D" as defined in ASTM E 1996.
3. Allowable design pressure requirements must be equal to or less than the design pressure rating shown in the design pressure chart, sheet 1 of this drawing.
4. Conditions not covered by this drawing are subject to further engineering analysis.

### TABLE OF CONTENTS

SHEET #	DESCRIPTION
1	Typical elevations, design pressures & general notes
2	Door/Sidelite panel details
3	Lite frame and glazing details
4	Elevations
5	Horizontal cross sections
6	Vertical cross sections
7	Vertical cross sections
8	Frame anchoring
9	Bill of materials & components



Documents Prepared By: Lyndon F. Schmidt, P.E.  
 TEXAS P.E. #104123

RW BUILDING CONSULTANTS, INC.  
 P.O. Box 230 Valrico FL 33595  
 Phone No.: 813.659.9197

TEXAS BOARD OF PROFESSIONAL ENGINEERS  
 CERTIFICATE OF REGISTRATION # F-11852

PRODUCT: FIBERGLASS DOOR

PART OR ASSEMBLY: TYPICAL ELEVATION, DESIGN PRESSURES & GENERAL NOTES

NO.	DATE	BY	REVISIONS

DATE: 11/8/12

SCALE: N.T.S.

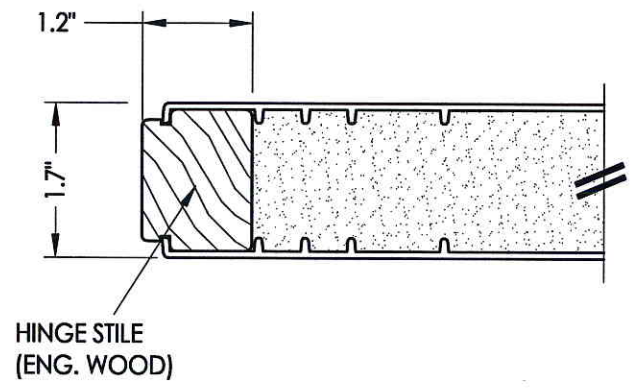
DWG. BY: JK

CHK. BY: LFS

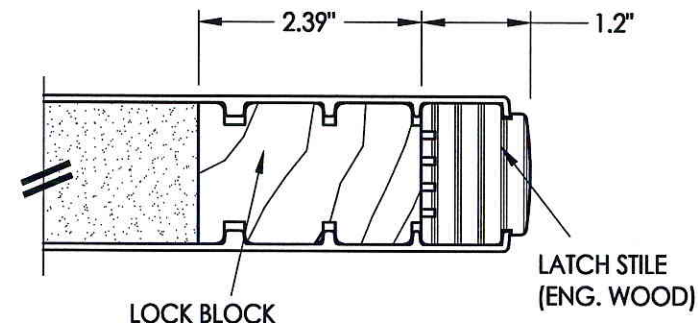
DRAWING NO.: TX-4270

SHEET 1 OF 9

R:\A - Projects\Project Folders\Proj 1601 - 1700\PF 1676\DWG\RWBC Drawings\TX-4270-71.dwg, 2.1



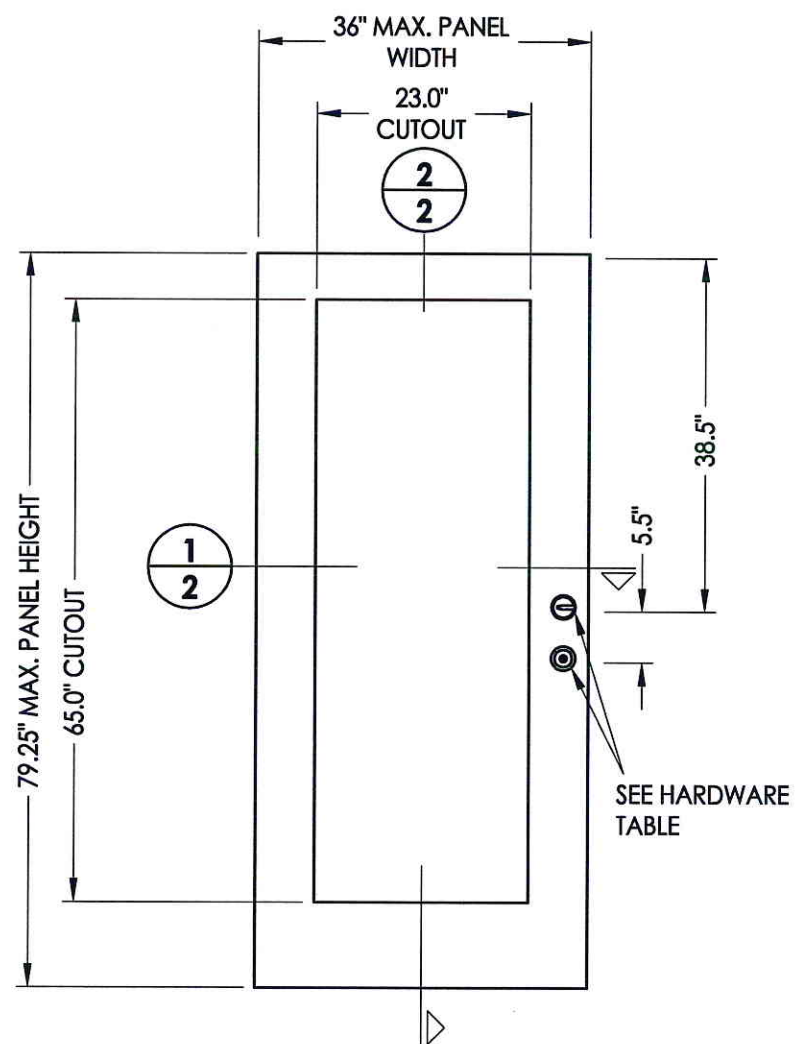
HINGE STILE  
(ENG. WOOD)



LOCK BLOCK  
21.5" LONG (WOOD)

LATCH STILE  
(ENG. WOOD)

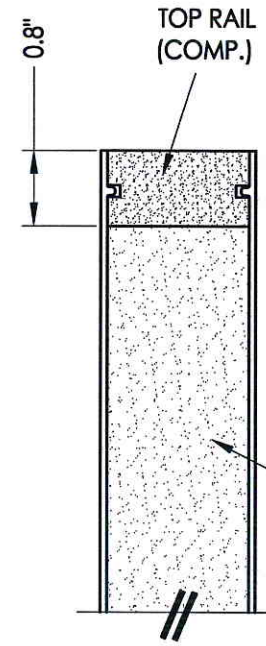
**1**  
**2** HORIZONTAL CROSS SECTION



SEE HARDWARE TABLE

- 40 DOOR PANEL**  
Fiber Classic (Therma-Tru)
- 50 SIDELITE PANEL**  
Fiber Classic (Therma-Tru)

HARDWARE TABLE		
MANUFACTURER	MODEL	
KWIKSET	KNOB:	SIGNATURE SERIES
	DEADBOLT:	SIGNATURE SERIES (980)

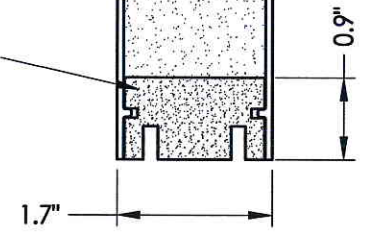


TOP RAIL  
(COMP.)

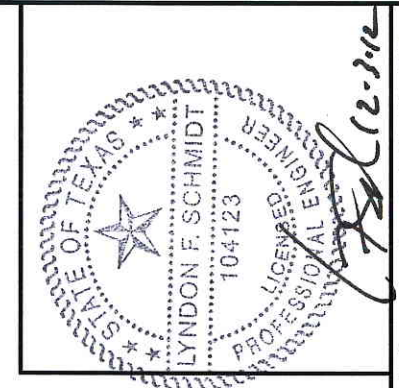
FOAM CORE  
(POLYURETHANE -  
1.9 PCF MIN.)

FIBERGLASS SKIN  
(0.075" MIN. THK.)

BOTTOM RAIL  
(COMP.)



**2**  
**2** VERTICAL CROSS SECTION



Documents Prepared By: Lyndon F. Schmidt, P.E.  
TEXAS P.E. #104123

**RW** BUILDING CONSULTANTS, INC.  
P.O. Box 230 Valrico FL 33595  
Phone No.: 813.659.9197

TEXAS BOARD OF PROFESSIONAL ENGINEERS  
CERTIFICATE OF REGISTRATION # F-11852

PRODUCT: FIBERGLASS DOOR

PART OR ASSEMBLY: DOOR/SIDELITE PANEL DETAILS

NO.	DATE	BY	REVISIONS

DATE: 11/8/12

SCALE: N.T.S.

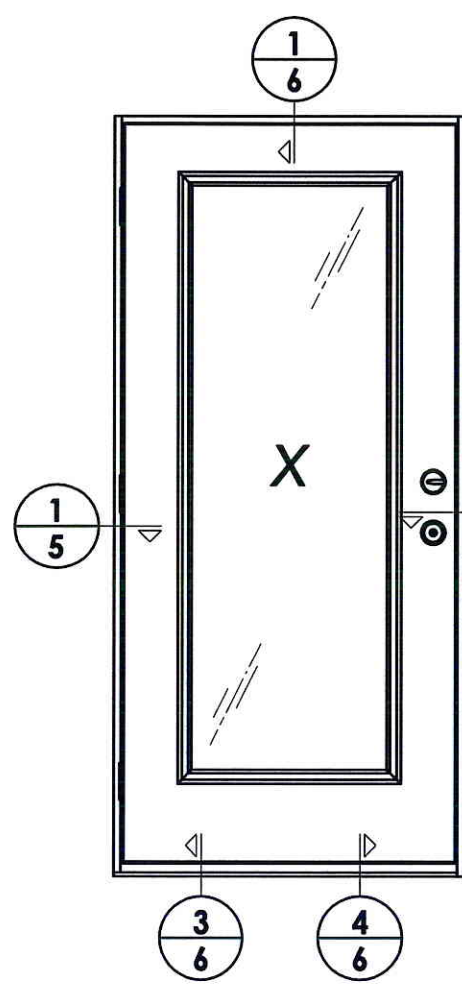
DWG. BY: JK

CHK. BY: LFS

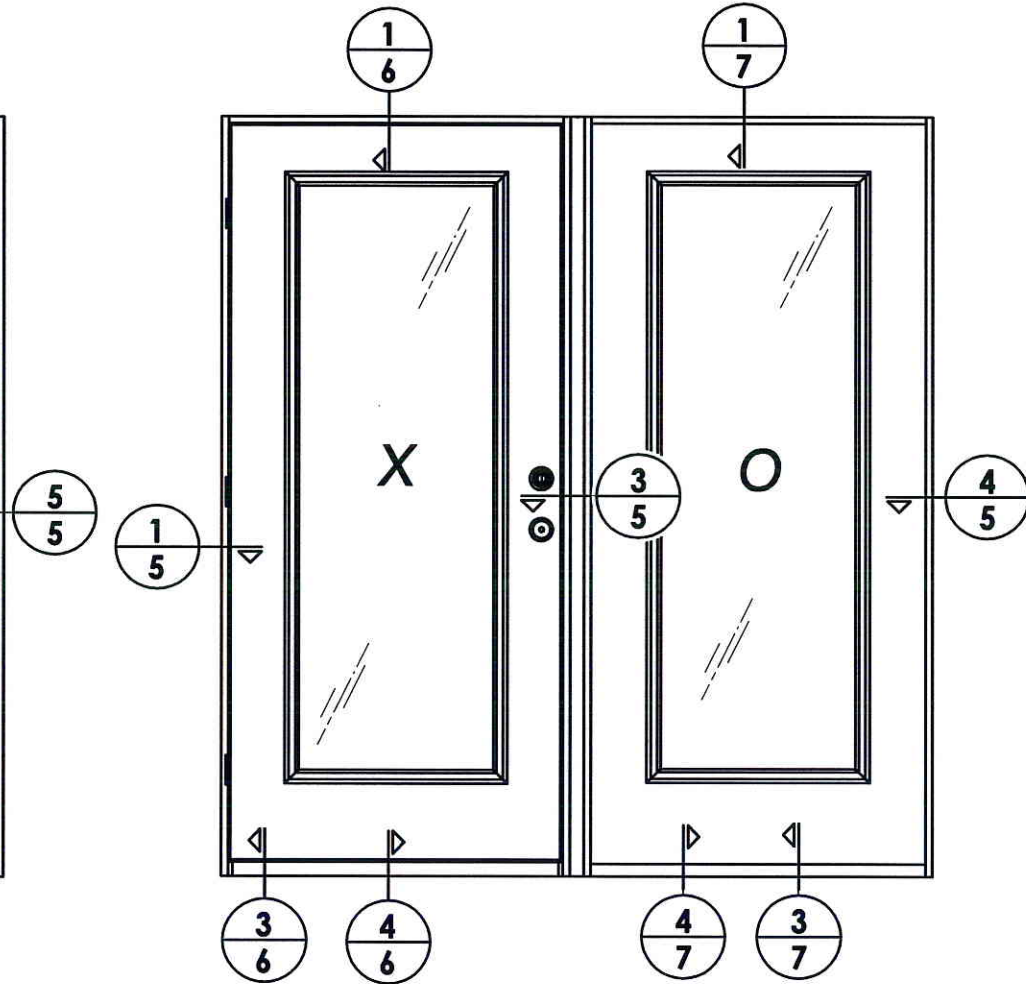
DRAWING NO.: TX-4270

SHEET 2 OF 9

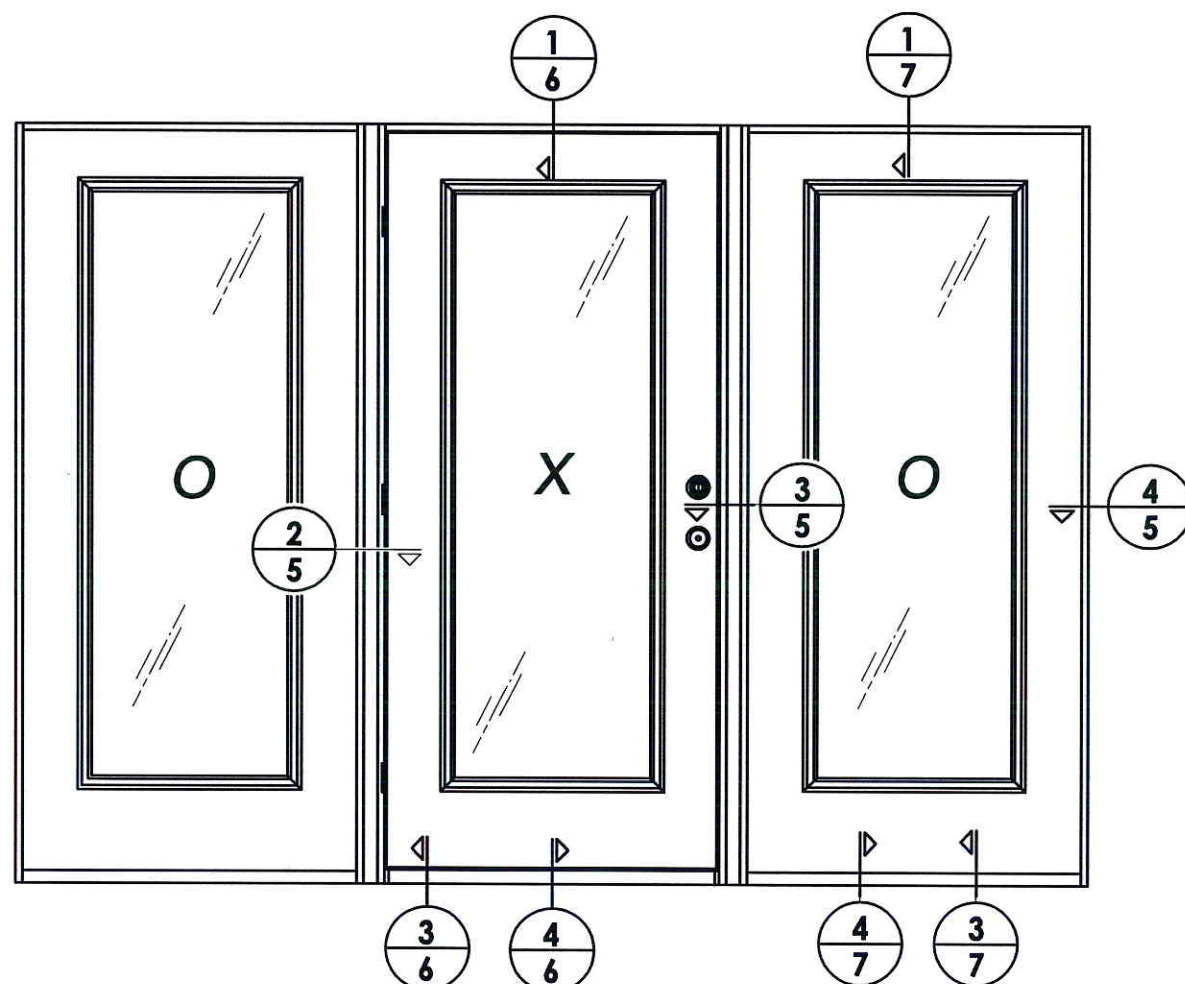




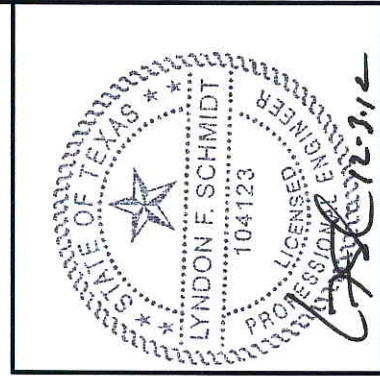
ELEVATION  
X



ELEVATION  
XO / OX



ELEVATION  
OXO

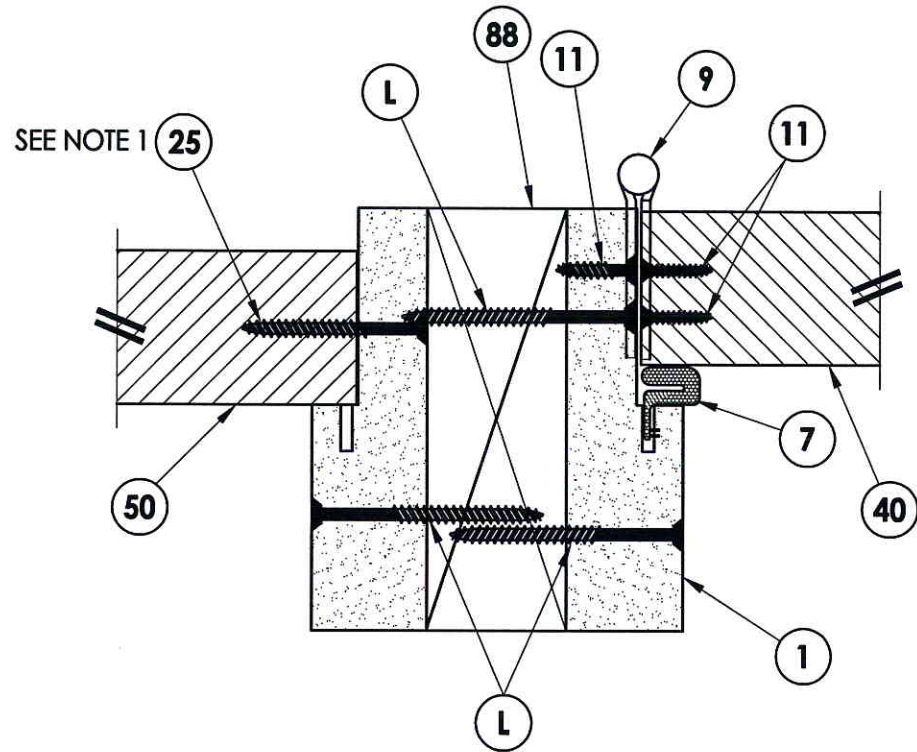


Documents Prepared By: Lyndon F. Schmidt, P.E.  
TEXAS P.E. #104123

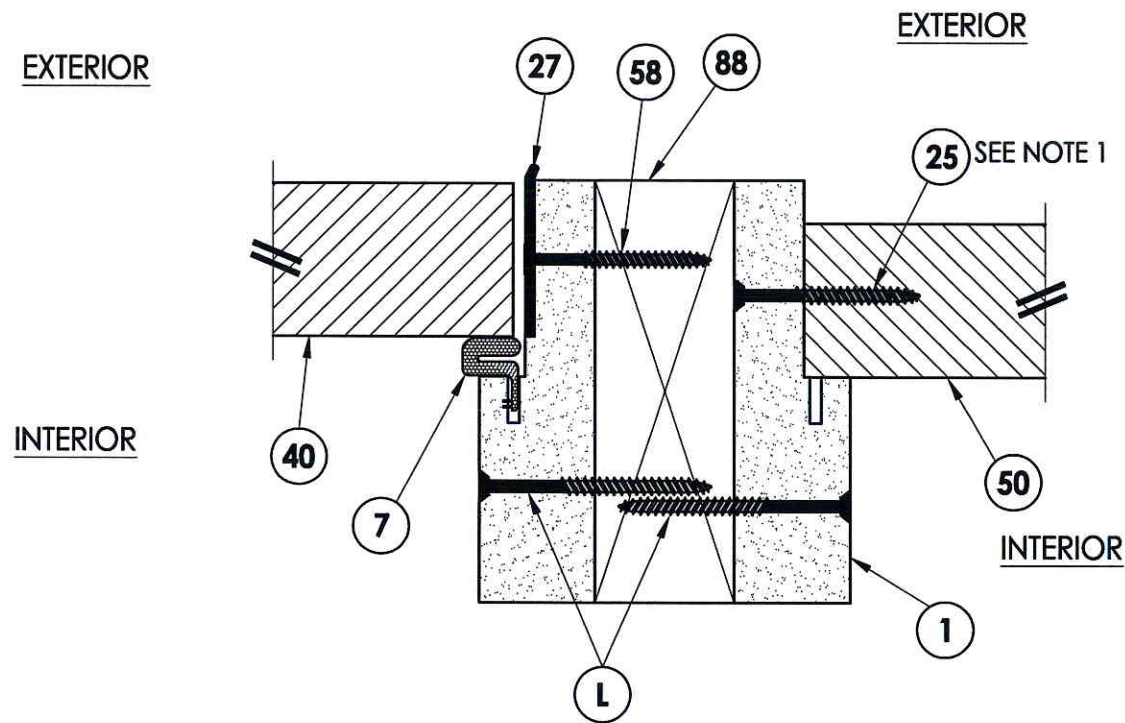
**RW** BUILDING CONSULTANTS, INC.  
P.O. Box 230 Valrico FL 33595  
Phone No.: 813.659.9197  
TEXAS BOARD OF PROFESSIONAL ENGINEERS  
CERTIFICATE OF REGISTRATION # F-11852

PRODUCT: FIBERGLASS DOOR	
PART OR ASSEMBLY: ELEVATIONS	
NO.	DATE
BY	REVISIONS
DATE: 11/8/12	
SCALE: N.T.S.	
DWG. BY: JK	
CHK. BY: LFS	
DRAWING NO.: TX-4270	
SHEET 4 OF 9	

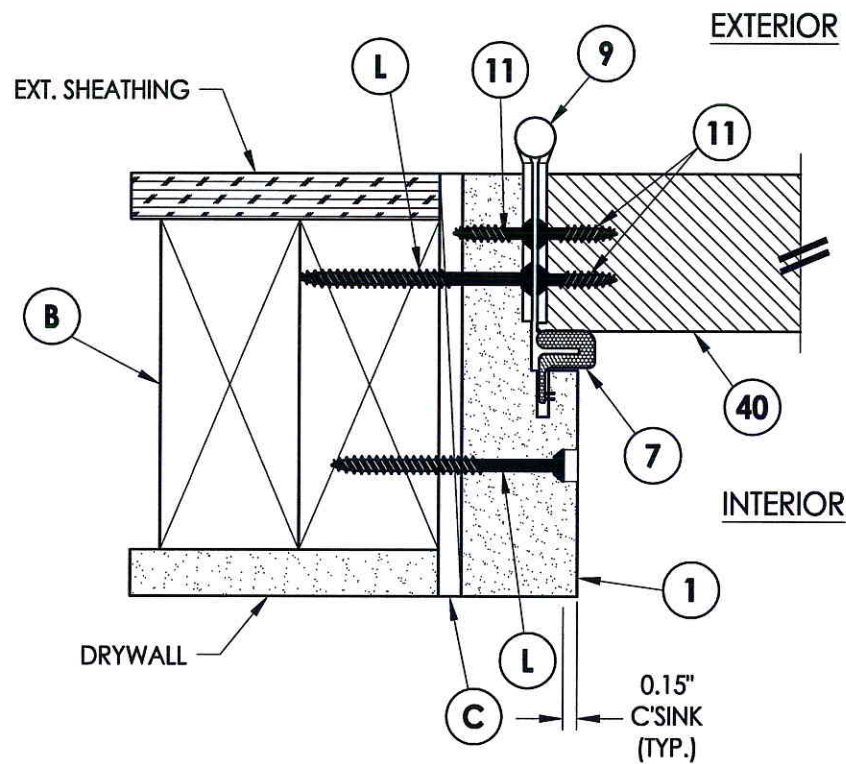
R:\A - Projects\Project Folders\Proj\_1601 - 1700\PF 1676\DWG\TX-4270-71.dwg, 5.1



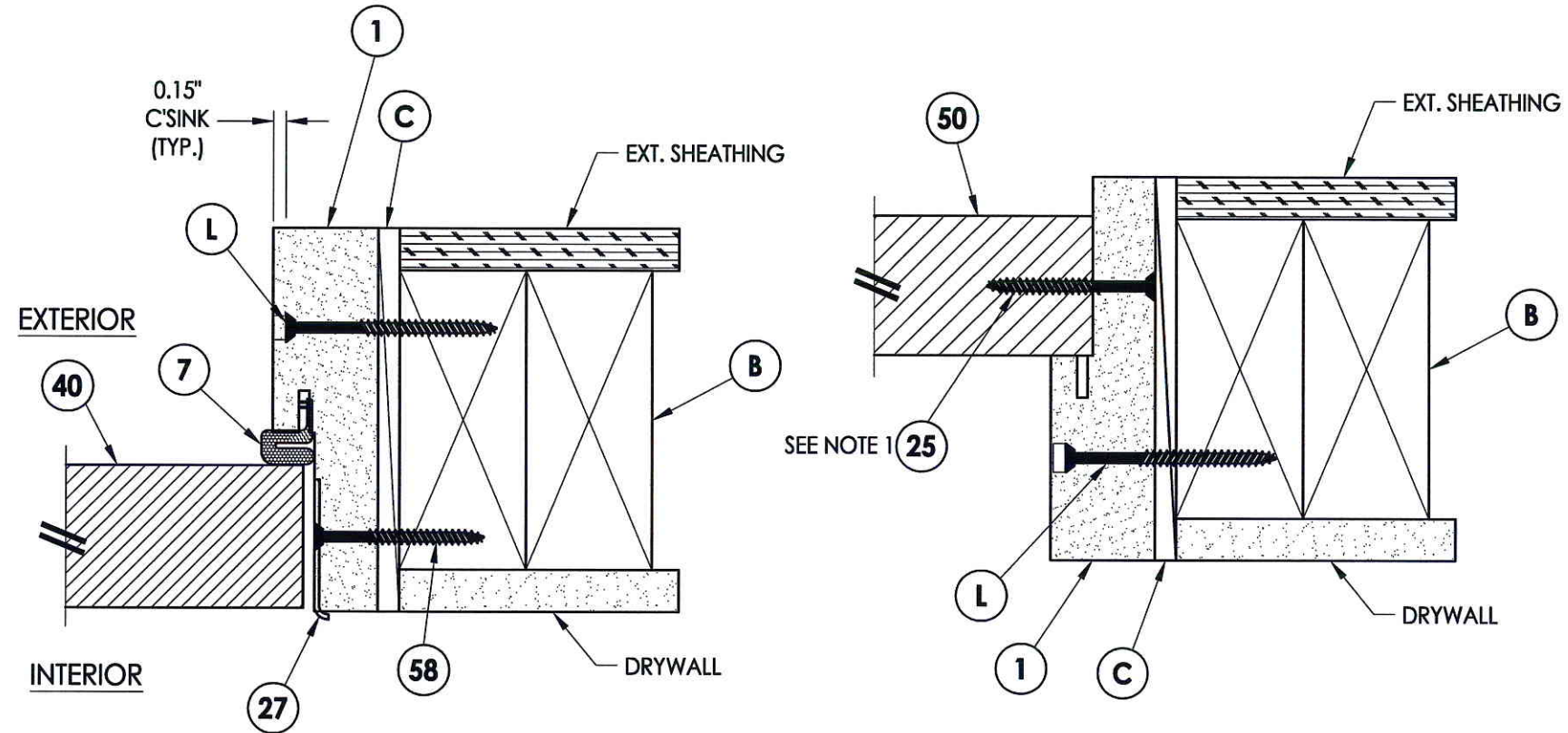
**2** HORIZONTAL CROSS SECTION  
**5** Outswing shown - Inswing also approved



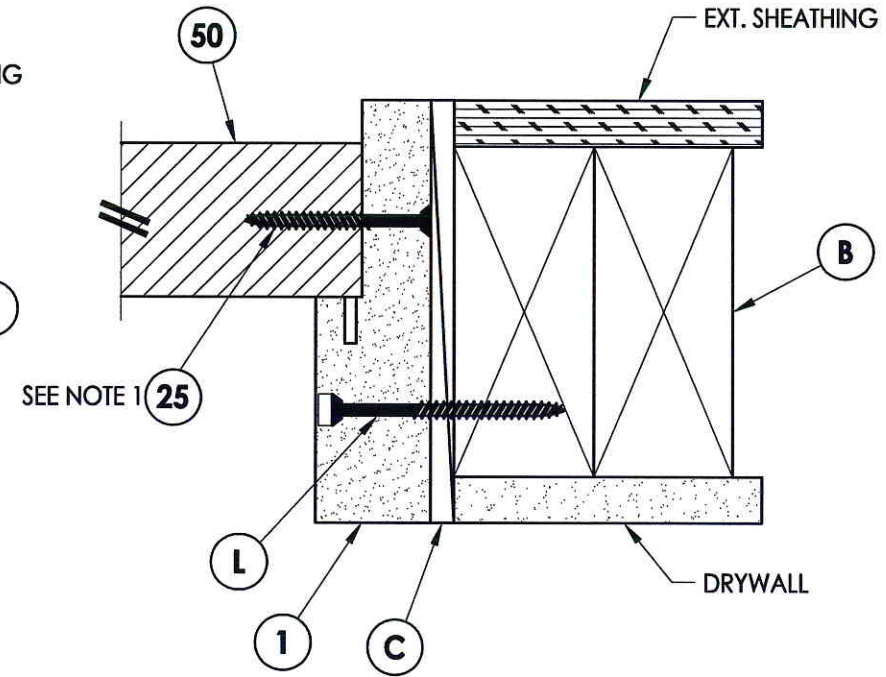
**3** HORIZONTAL CROSS SECTION  
**5** Outswing shown - Inswing also approved



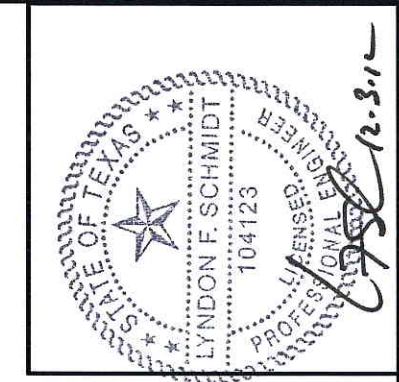
**1** HORIZONTAL CROSS SECTION  
**5** Outswing shown - Inswing also approved



**5** HORIZONTAL CROSS SECTION  
**5** Inswing shown - inswing also approved



**4** HORIZONTAL CROSS SECTION  
**5** Outswing shown - Inswing also approved



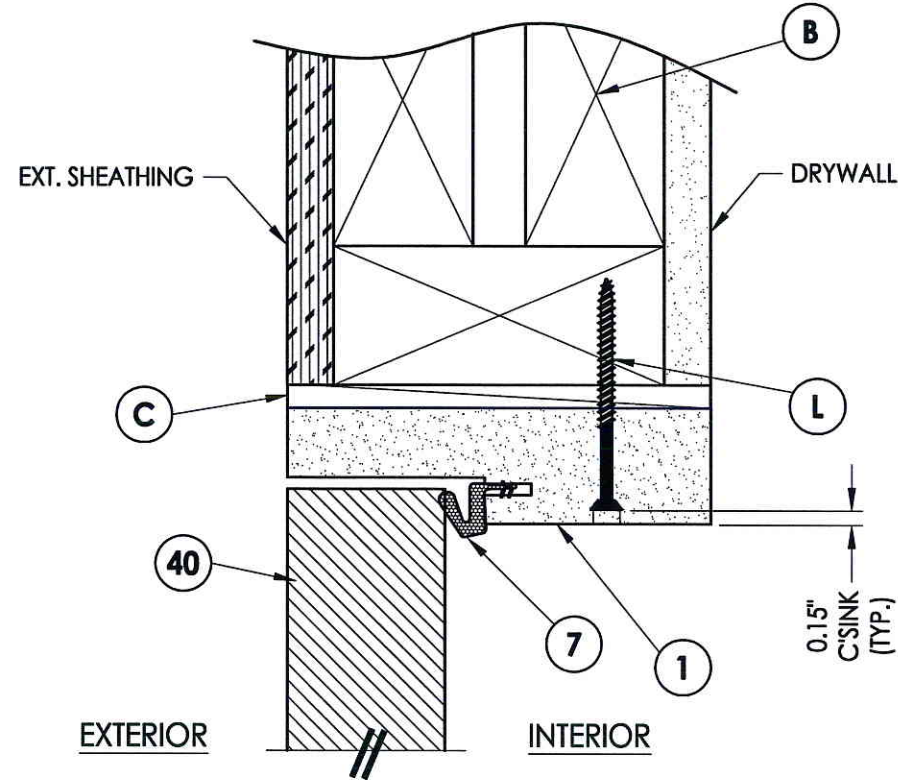
Documents Prepared By: Lyndon F. Schmidt, P.E.  
TEXAS P.E. #104123

*RW* BUILDING CONSULTANTS, INC.  
P.O. Box 230 Valrico FL 33595  
Phone No.: 813.659.9197

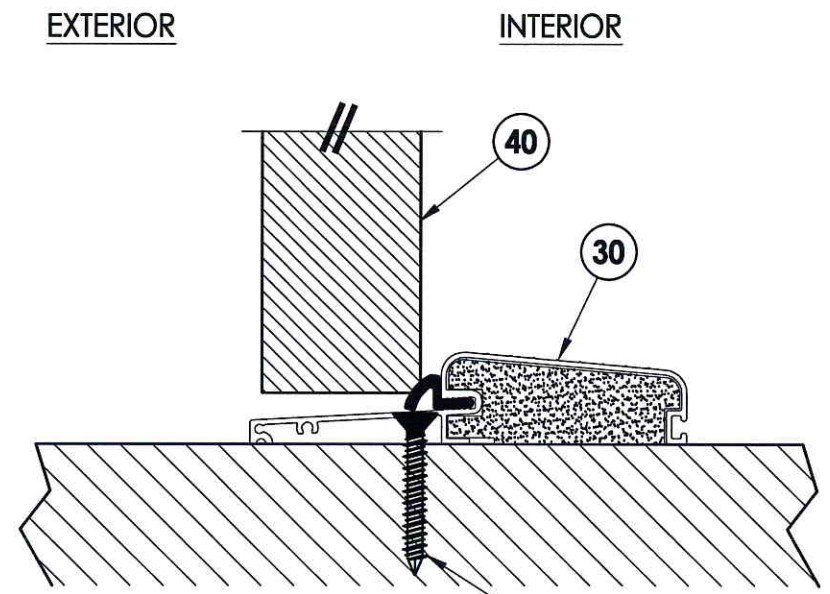
TEXAS BOARD OF PROFESSIONAL ENGINEERS  
CERTIFICATE OF REGISTRATION # F-11852

NOTE:  
1. Sidelite panel screws located 6" from each end plus 4 more equally spaced (6 screws total).

PRODUCT:		FIBERGLASS DOOR	
PART OR ASSEMBLY:		HORIZONTAL CROSS SECTIONS	
NO.	DATE	BY	REVISIONS
DATE: 11/8/12			
SCALE: N.T.S.			
DWG. BY: JK			
CHK. BY: LFS			
DRAWING NO.: TX-4270			
SHEET 5 OF 9			

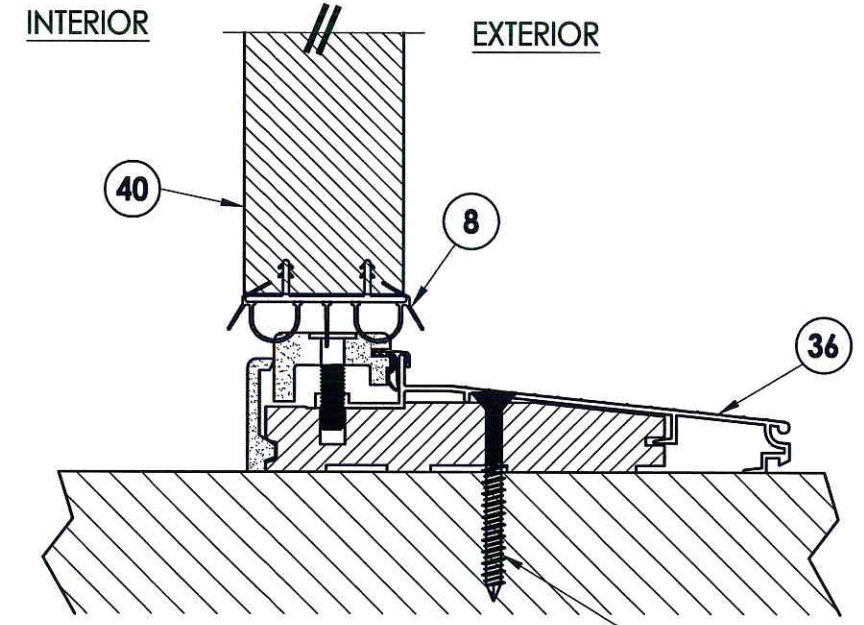


**1** VERTICAL CROSS SECTION  
**6** Outswing shown - inswing also approved



**2** VERTICAL CROSS SECTION  
**6** Outswing configuration

**J** WOOD  
**D** CONCRETE



**3** VERTICAL CROSS SECTION  
**6** Inswing configuration

**J** WOOD  
**D** CONCRETE



Documents Prepared By: Lyndon F. Schmidt, P.E.  
 TEXAS P.E. #104123

**RW** BUILDING CONSULTANTS, INC.  
 P.O. Box 230 Valrico FL 33595  
 Phone No.: 813.659.9197

TEXAS BOARD OF PROFESSIONAL ENGINEERS  
 CERTIFICATE OF REGISTRATION # F-11852

PRODUCT: FIBERGLASS DOOR

PART OR ASSEMBLY: VERTICAL CROSS SECTIONS

NO.	DATE	BY	REVISIONS

DATE: 11/8/12

SCALE: N.T.S.

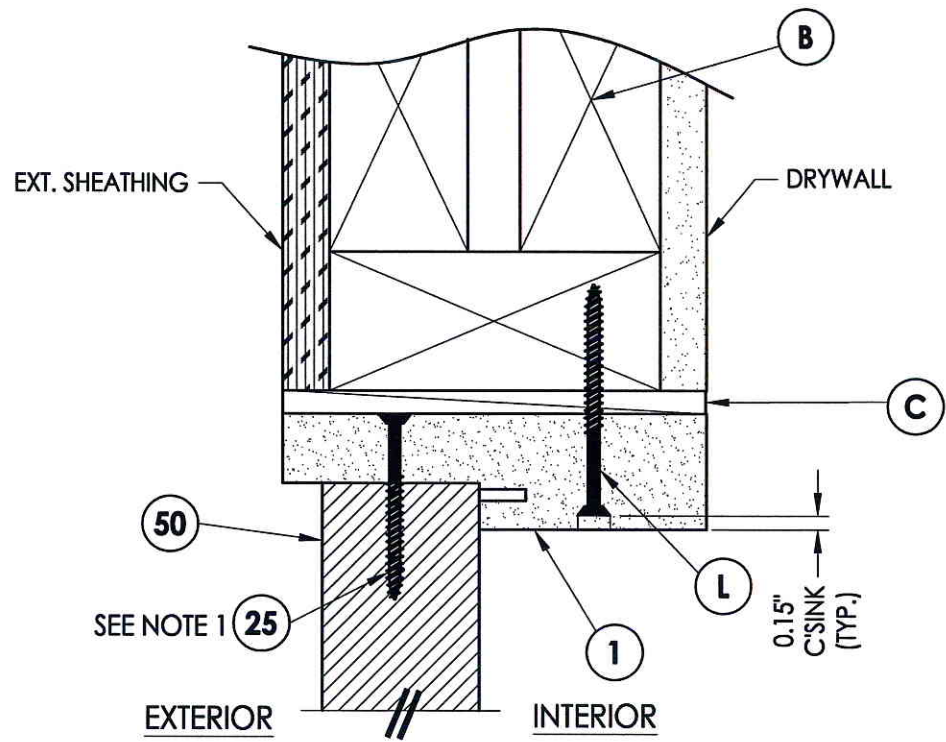
DWG. BY: JK

CHK. BY: LFS

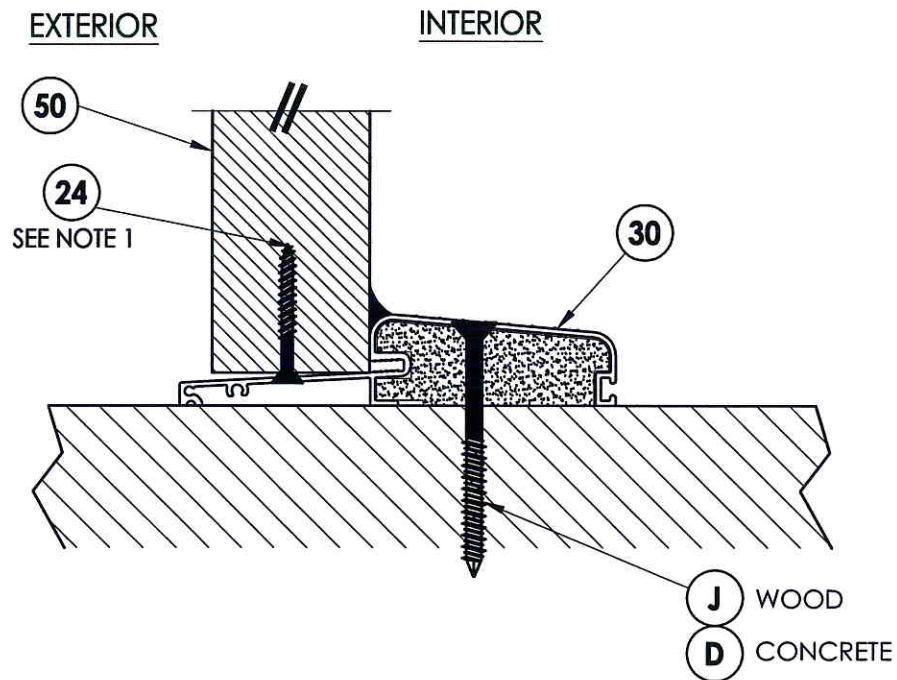
DRAWING NO.: TX-4270

SHEET 6 OF 9

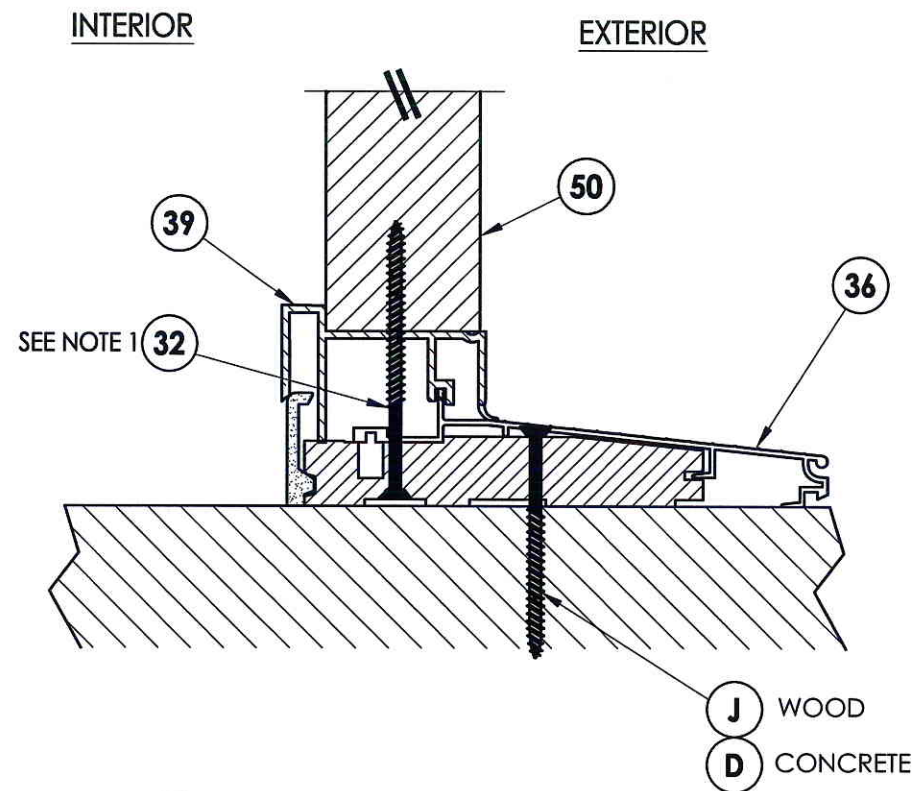
R:\A - Projects\Project Folders\Proj 1601 - 1700\PF 1676\D. RWBC Drawings\TX-4270-71.dwg, 7.1



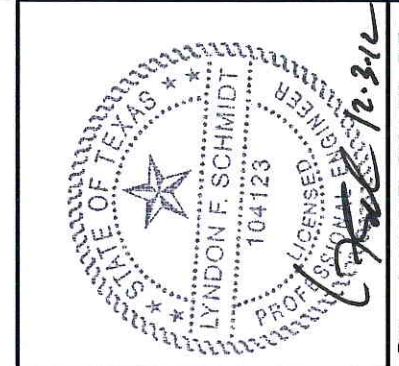
**1**  
**7** **VERTICAL CROSS SECTION**  
Outswing shown - Inswing also approved



**2**  
**7** **VERTICAL CROSS SECTION**  
Outswing shown



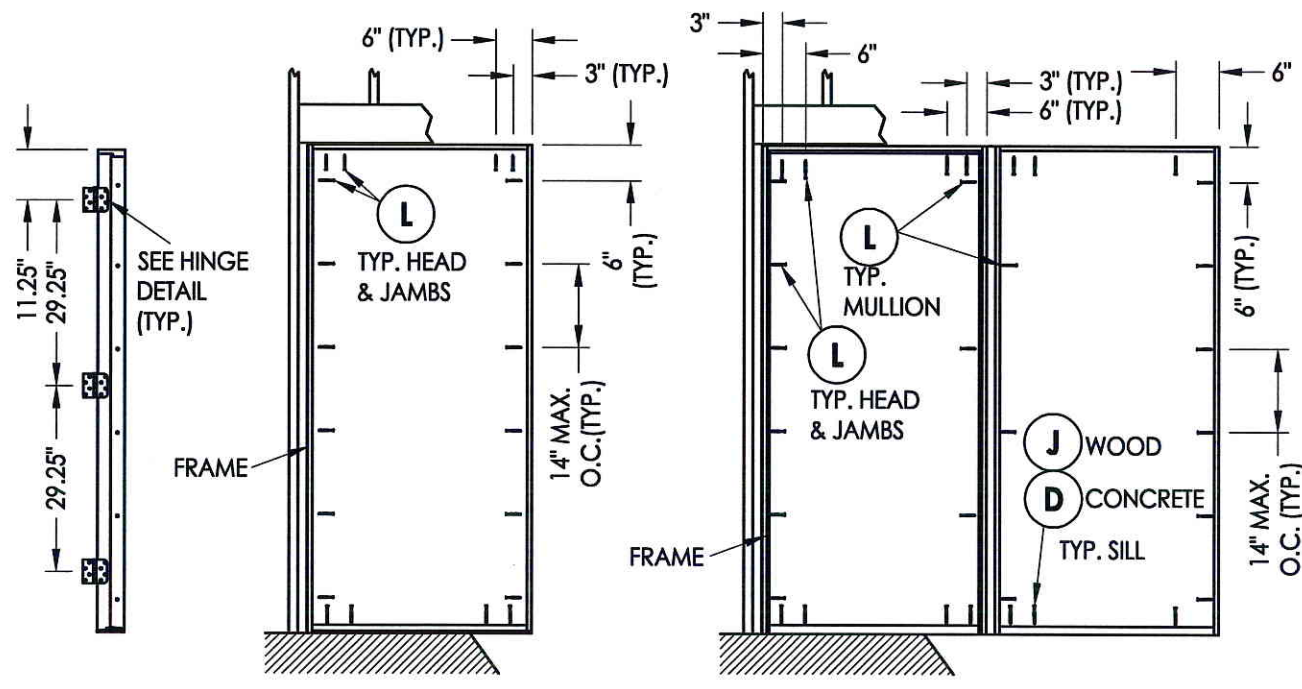
**3**  
**7** **VERTICAL CROSS SECTION**  
Inswing shown



NOTE:  
1. Sidelite panel screws located 6" from each end (2 Total).

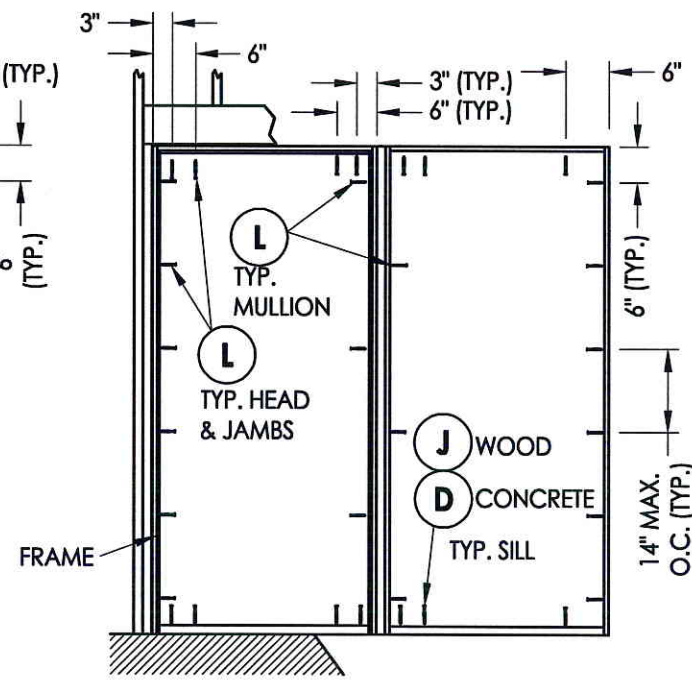
Documents Prepared By: Lyndon F. Schmidt, P.E.  
TEXAS P.E. #104123  
*RW* BUILDING CONSULTANTS, INC.  
P.O. Box 230 Valrico FL 33595  
Phone No.: 813.659.9197  
TEXAS BOARD OF PROFESSIONAL ENGINEERS  
CERTIFICATE OF REGISTRATION # F-11852

PRODUCT:	FIBERGLASS DOOR	
PART OR ASSEMBLY:	VERTICAL CROSS SECTIONS	
NO.	DATE	BY
REVISIONS		
DATE:	11/8/12	
SCALE:	N.T.S.	
DWG. BY:	JK	
CHK. BY:	LFS	
DRAWING NO.:	TX-4270	
SHEET	7 OF 9	



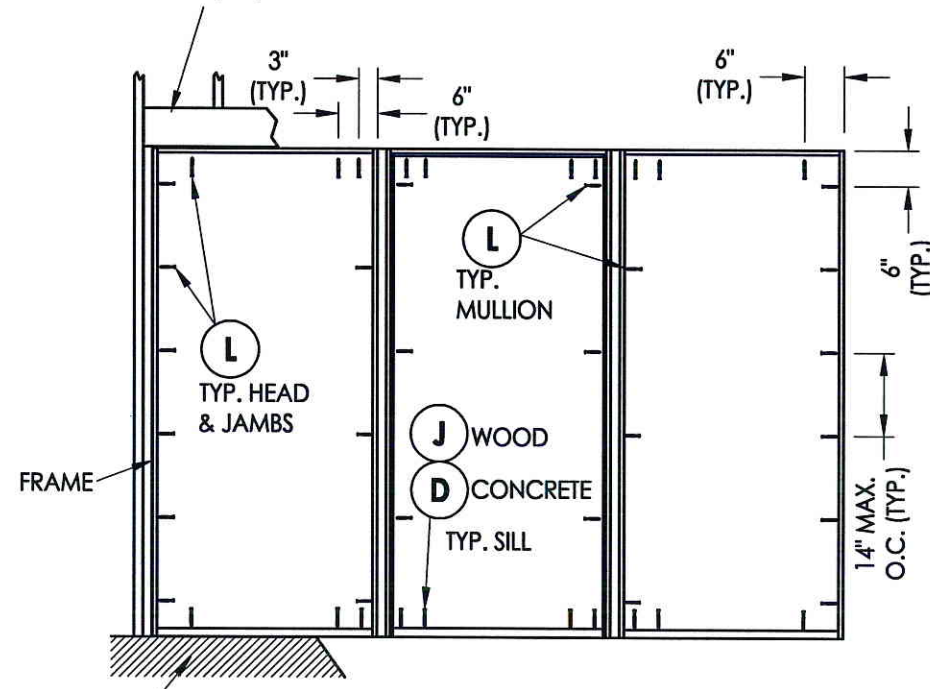
**HINGE JAMB**

**FRAME ANCHORING  
X**



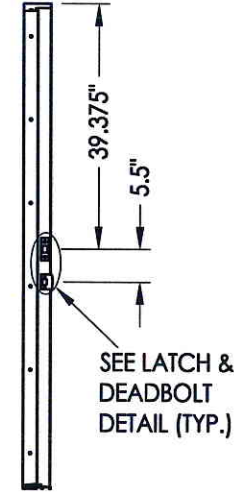
**FRAME ANCHORING  
XO (shown)  
OX (similar)**

2X FRAMING TO BE DESIGNED BY THE ENGINEER OR ARCHITECT OF RECORD BASED ON WIND LOADS AND THE CLADDING BEING USED (TYP).

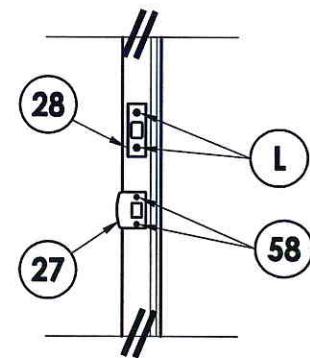


**FRAME ANCHORING  
OXO**

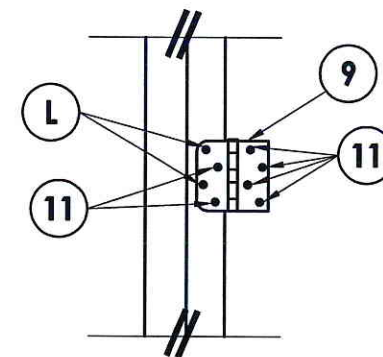
FLOOR SUBSTRATE MATERIAL (TYP.)  
CONCRETE (MIN. 3000 PSI)  
WOOD (G >= 0.42)



**STRIKE JAMB**



**LATCH & DEADBOLT DETAIL**



**HINGE DETAIL**



Documents Prepared By: Lyndon F. Schmidt, P.E.  
TEXAS P.E. #104123

**RW** BUILDING CONSULTANTS, INC.  
P.O. Box 230 Valrico FL 33595  
Phone No.: 813.659.9197  
TEXAS BOARD OF PROFESSIONAL ENGINEERS  
CERTIFICATE OF REGISTRATION # F-11852

PRODUCT:	FIBERGLASS DOOR
PART OR ASSEMBLY:	FRAME ANCHORING

NO.	DATE	BY	REVISIONS

DATE:	8/28/12
SCALE:	N.T.S.
DWG. BY:	JK
CHK. BY:	LFS
DRAWING NO.:	TX-4270
SHEET	8 OF 9

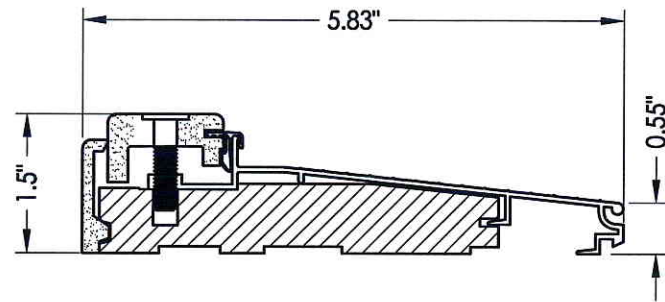
**CONCRETE ANCHOR NOTES:**

- Concrete anchor locations at the corners may be adjusted to maintain the min. edge distance to mortar joints.
- Concrete anchor locations noted as "MAX. ON CENTER" must be adjusted to maintain the min. edge distance to mortar joints, additional concrete anchors may be required to ensure the "MAX. ON CENTER" dimension are not exceeded.
- Concrete anchor table:

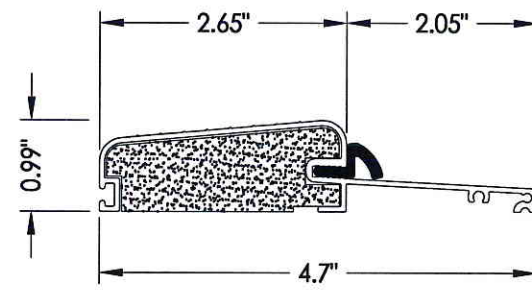
ANCHOR TYPE	ANCHOR SIZE	MIN. EMBEDMENT	MIN. CLEARANCE TO MASONRY EDGE	MIN. CLEARANCE TO ADJACENT ANCHOR
ITW TAPCON®	1/4"	1-3/4"	2-1/2"	3"
ELCO ULTRACON®	1/4"	1-3/4"	1"	3"



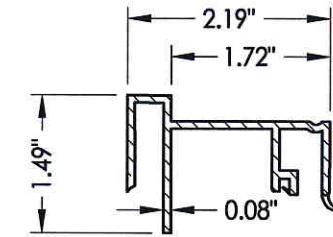
BILL OF MATERIALS		
ITEM #	DESCRIPTION	MATERIAL
B	2X FRAMING (G >= 0.42)	WOOD
C	1/4" MAX. SHIM SPACE	-
D	1/4" PFH ELCO OR ITW CONCRETE SCREW (1-3/4" MIN. EMB.)	STEEL
J	#10 X 3" PFH WOOD SCREW (1-1/2" MIN. EMB.)	STEEL
L	#10 X 2-1/2" PFH WOOD SCREW (1.15" MIN. EMB.)	STEEL
1	HEAD & JAMB	COMP
7	WEATHERSTRIP (THERMA-TRU)	FOAM
8	DOOR BOTTOM SWEEP	VINYL
9	4" HINGE (THERMA-TRU) W/ 5/8" RADIUS CORNERS	STEEL
11	#9 X 3/4" PFH WOOD SCREW	STEEL
24	#10 X 1-1/2" PFH WOOD SCREW	STEEL
25	#10 X 2" PFH WOOD SCREW	STEEL
27	LATCH STRIKE PLATE	STEEL
28	DEADBOLT STRIKE PLATE	STEEL
30	OUTSWING THRESHOLD	ALUM/COMP
32	#8 X 3" PFH WS	STEEL
36	INSWING THRESHOLD	ALUM/COMP
39	INSWING SIDELITE SEAT	PVC
40	DOOR PANEL - SEE DOOR PANEL DETAIL SHEET FOR DETAILS	-
50	SIDELITE PANEL - SEE SIDELITE PANEL DETAIL SHEET FOR DETAILS	-
58	#8 X 2-1/2" PFH WOOD SCREW	STEEL
88	2X MULLION REINFORCEMENT (G >= 0.55)	WOOD



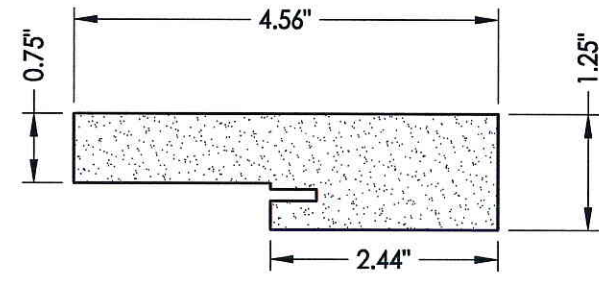
**36 INSWING THRESHOLD**  
Therma-Tru



**30 OUTSWING THRESHOLD**  
Columbia 775 Series  
w/ Composite Substrate



**39 INSWING SIDELITE SEAT**  
Therma-Tru



**1 HEAD & JAMB**  
Composite



Documents Prepared By: Lyndon F. Schmidt, P.E.  
TEXAS P.E. #104123

**RW** BUILDING CONSULTANTS, INC.  
P.O. Box 230 Valrico FL 33595  
Phone No.: 813.659.9197  
TEXAS BOARD OF PROFESSIONAL ENGINEERS  
CERTIFICATE OF REGISTRATION # F-11852

PRODUCT: FIBERGLASS DOOR  
PART OR ASSEMBLY: BILL OF MATERIALS & COMPONENTS

NO.	DATE	BY	REVISIONS

DATE: 11/8/12  
SCALE: N.T.S.  
DWG. BY: JK  
CHK. BY: LFS  
DRAWING NO.: TX-4270  
SHEET 9 OF 9