

plastpro

5200 W. CENTURY BLVD.
LOS ANGELES, CA 90045

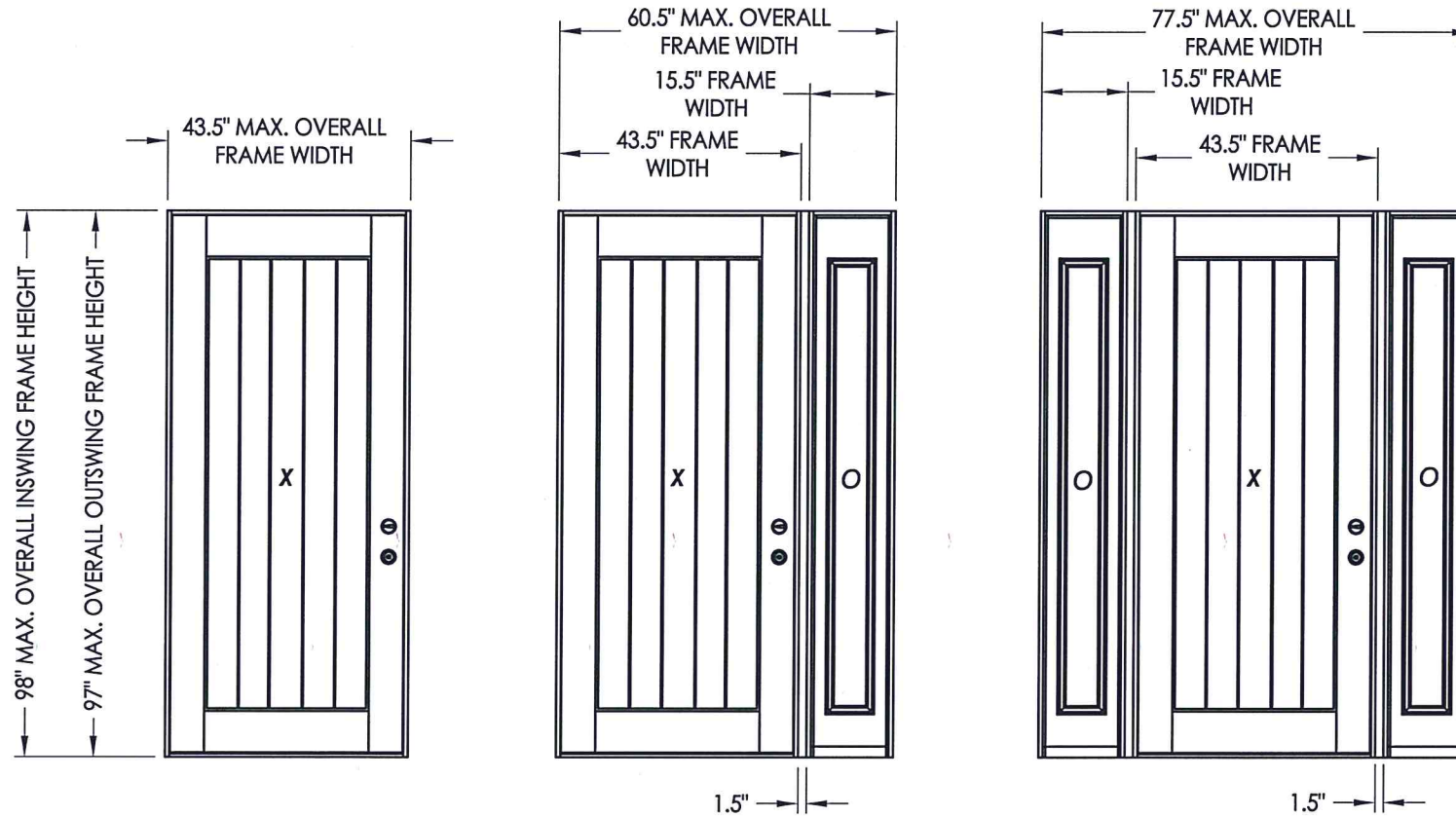
RUSTIC/MAHOGANY SERIES FIBERGLASS SINGLE DOORS w/ or w/o SIDELITES INSWING / OUTSWING "NON-IMPACT"

EVALUATED FOR USE IN THE STATE OF TEXAS

The Fiberglass Door system described herein complies with the 2018 International Residential Code (IRC), Sections R301 & R609 and the 2018 International Building Code (IBC), Sections 1404.13, 1609, 1709.5, 2403 and 2404 subject to the following conditions:

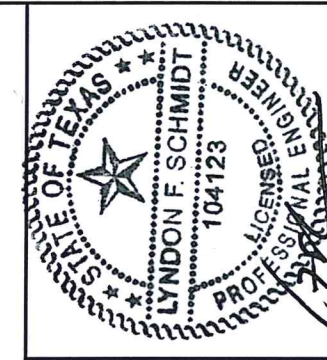
1. Anchors shall be as listed and spaced as shown in the details. Anchor embedment to base material shall be beyond wall dressing or stucco.
2. When used in areas requiring wind-borne debris protection this product is required to be protected with an impact resistant covering that complies with Section R301.2.1.2 of the IRC and Section 1609.1.2 of the IBC.
3. Allowable design pressure requirements must be equal to or less than the design pressure rating shown in the design pressure chart, sheet 1 of this drawing.
4. Conditions not covered by this drawing are subject to further engineering analysis.

TABLE OF CONTENTS	
SHEET#	DESCRIPTION
1	Typical elevations, design pressures & general notes
2	Door panel details
3	Sidelite panel details
4	Elevations
5	Vertical cross sections
6	Horizontal cross sections
7	Frame anchoring & hardware details
8	Bill of materials and components



CONFIGURATION	MAX. FRAME DIMENSION	JAMB REINFORCEMENT	DESIGN PRESSURE (PSF) INSWING		DESIGN PRESSURE (PSF) OUTSWING	
			POSITIVE	NEGATIVE	POSITIVE	NEGATIVE
X	43.5" x 98.0"	N/A	+60.0	-65.0	+60.0	-60.0
OX/XO	59.0" x 98.0"	N/A	+30.0	-30.0	+30.0	-30.0
	59.75" x 98.0"	1X	+40.0	-40.0	+40.0	-40.0
OXO	60.5" x 98.0"	2X	+55.0	-55.0	+55.0	-55.0
	74.5" x 98.0"	N/A	+30.0	-30.0	+30.0	-30.0
	76.0" x 98.0"	1X	+40.0	-40.0	+40.0	-40.0
	77.5" x 98.0"	2X	+55.0	-55.0	+55.0	-55.0

SEE SHEET 3 FOR TRIMLITE LITE FRAME DESIGN PRESSURE LIMITATIONS.



Documents Prepared By: Lyndon F. Schmidt, P.E.
TEXAS P.E. #104123

RW BUILDING CONSULTANTS, INC.
P.O. Box 230 Vairico FL 33595
Phone No.: 813.659.9197

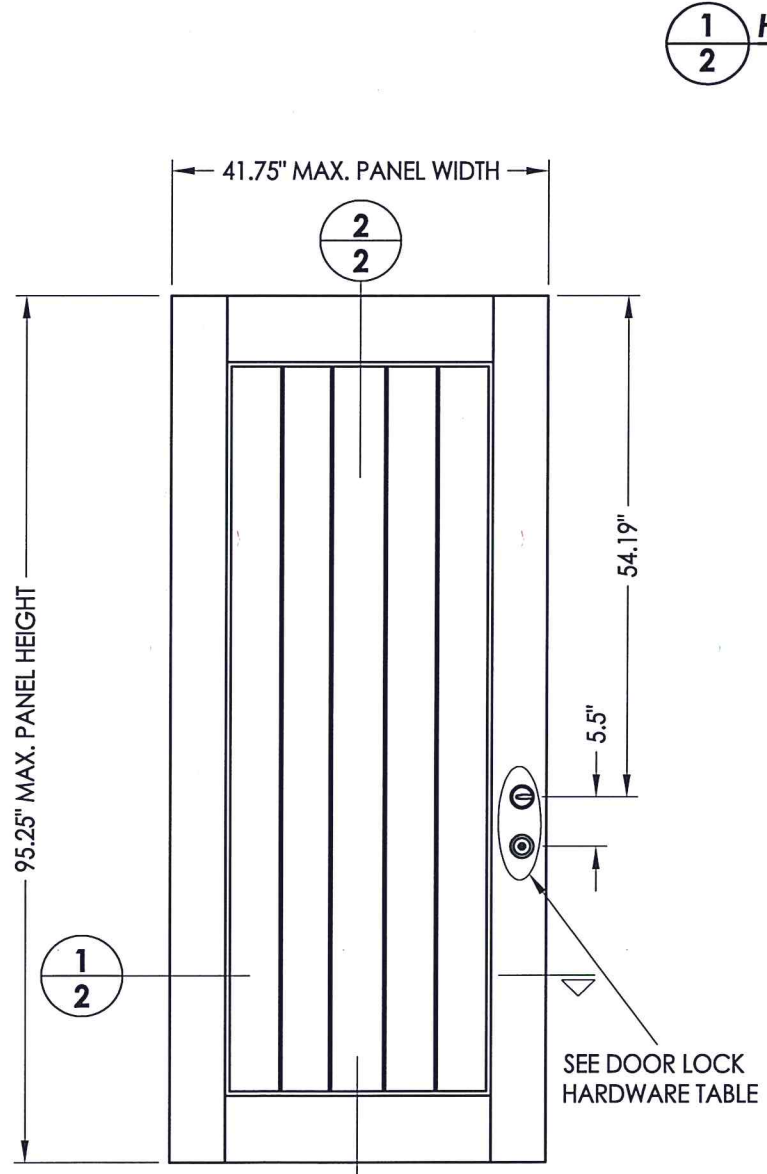
TEXAS BOARD OF PROFESSIONAL ENGINEERS
CERTIFICATE OF REGISTRATION # F-11852

PRODUCT: PLASTPRO FIBERGLASS DOOR
PART OR ASSEMBLY: TYPICAL ELEVATION, DESIGN PRESSURES & GENERAL NOTES

NO.	DATE	BY	REVISIONS
2	5/26/20	LFS	UPDATE TO 2018 IRC/IBC CODE
1	4/26/16	LFS	ADDED TRIMLITE LITE FRAME

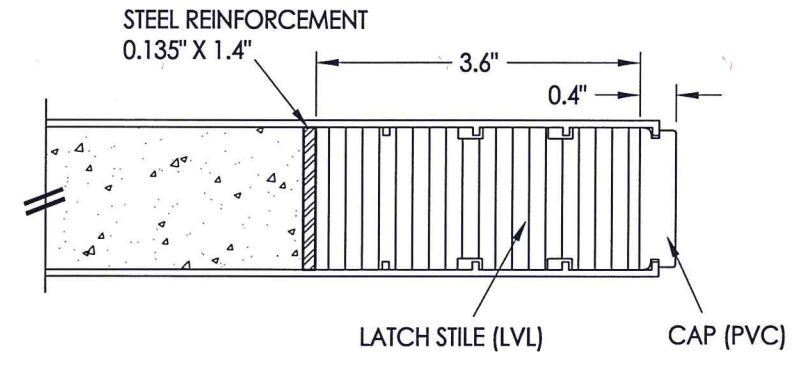
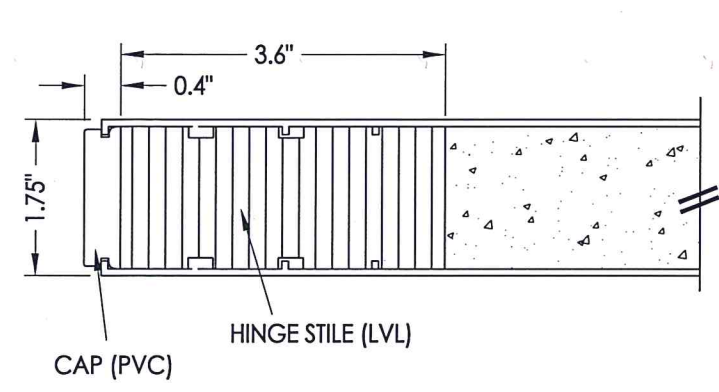
DATE: 11/13/14
SCALE: N.T.S.
DWG. BY: JK
CHK. BY: LFS
DRAWING NO.: TX-4481
SHEET 1 OF 8

R:\Clients\Plastpro, Inc PERMANENT\B - TD\TDI - DR 629 Rustic 36 x 80 Non-Impact (4-28-16)\Drawings\TX-4481 REV.dwg, 2.3



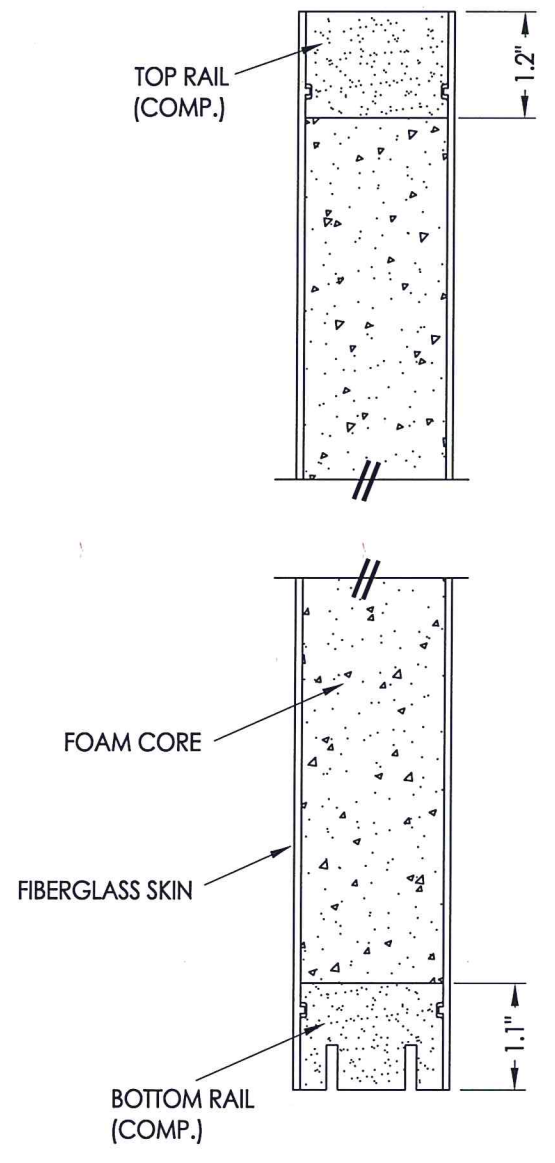
40 DOOR PANEL
Rustic/Mahogany Series

FIBERGLASS DOOR SKIN: MIN. 0.100\"/>

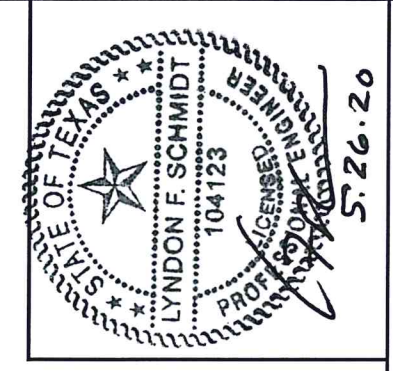


1 HORIZONTAL CROSS SECTION

HARDWARE TABLE	
MANUFACTURER	MODEL
KWIKSET	KNOB: KWIKSET SERIES (400) DEADBOLT: KWIKSET SERIES (660)



2 VERTICAL CROSS SECTION



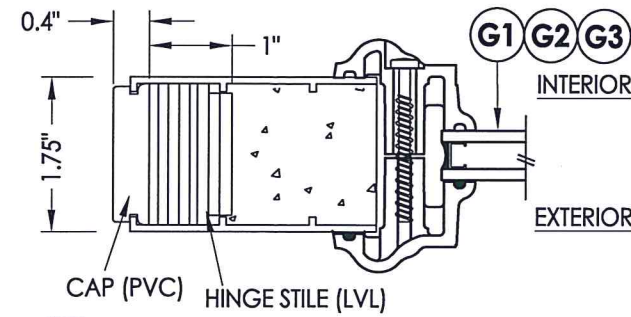
Documents Prepared By: Lyndon F. Schmidt, P.E.
TEXAS P.E. #104123

RW BUILDING CONSULTANTS, INC.
P.O. Box 230 Valrico FL, 33595
Phone No.: 813.659.9197

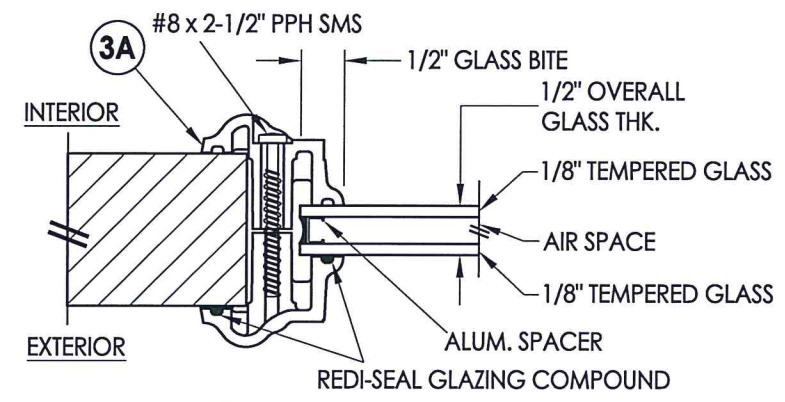
TEXAS BOARD OF PROFESSIONAL ENGINEERS
CERTIFICATE OF REGISTRATION # F-11852

PRODUCT:	PLASTPRO FIBERGLASS DOOR
PART OR ASSEMBLY:	DOOR PANEL DETAILS
DATE:	11/13/14
SCALE:	N.T.S.
DWG. BY:	JK
CHK. BY:	LFS
DRAWING NO.:	TX-4481
SHEET	2 OF 8

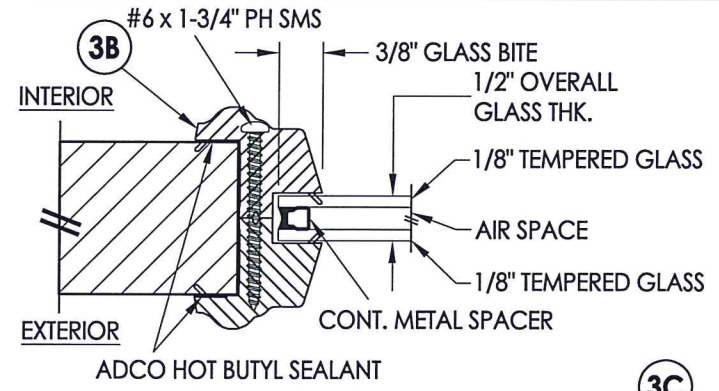
R:\Clients\Plastpro, Inc PERMANENT\B - TD\TDI - DR 629 Rustic 36 x 80 Non-Impact (4-28-16)\Drawings\TX-4481 REV.dwg, 3.3



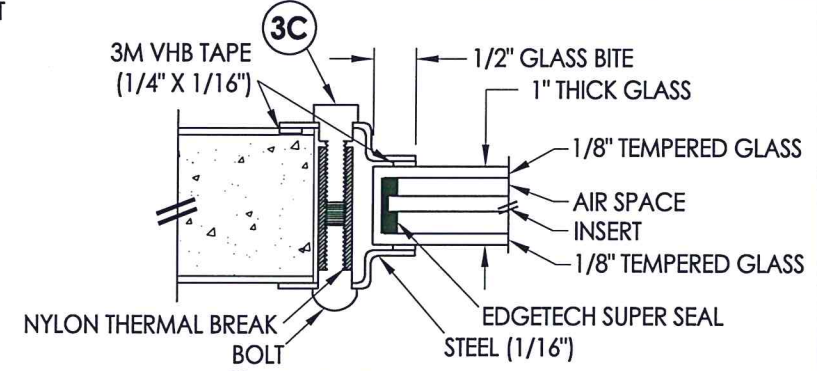
1 HORIZONTAL CROSS SECTION
3 Shown w/ ODL Lite Frame
 (RSL & Trimlite Lite Frames Similar)



G1 GLAZING DETAIL
 ODL LITE FRAME



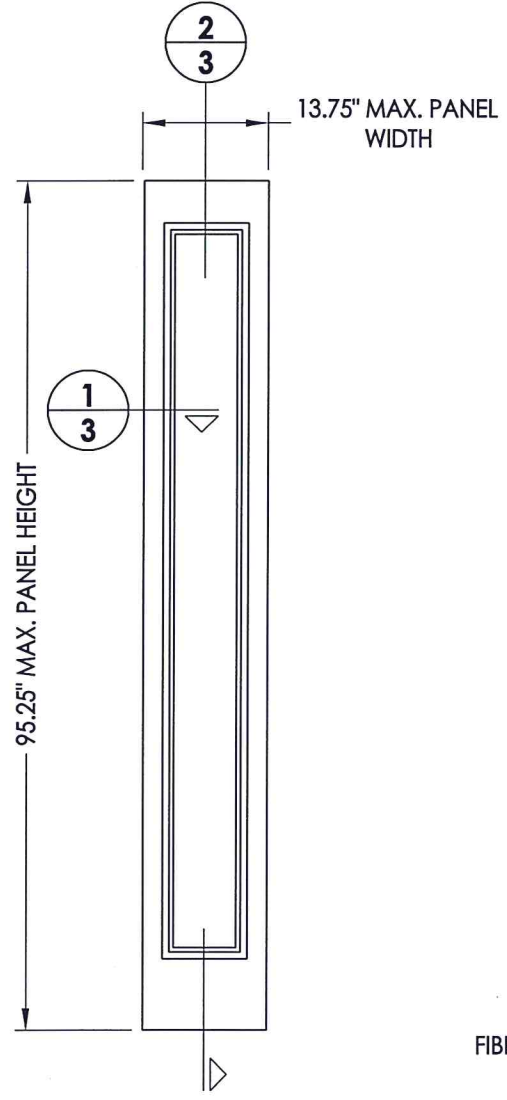
G2 GLAZING DETAIL
 RSL LITE FRAME



G3 GLAZING DETAIL
 TRIMLITE LITE FRAME
 MAX. DESIGN PRESSURE = ± 50 PSF

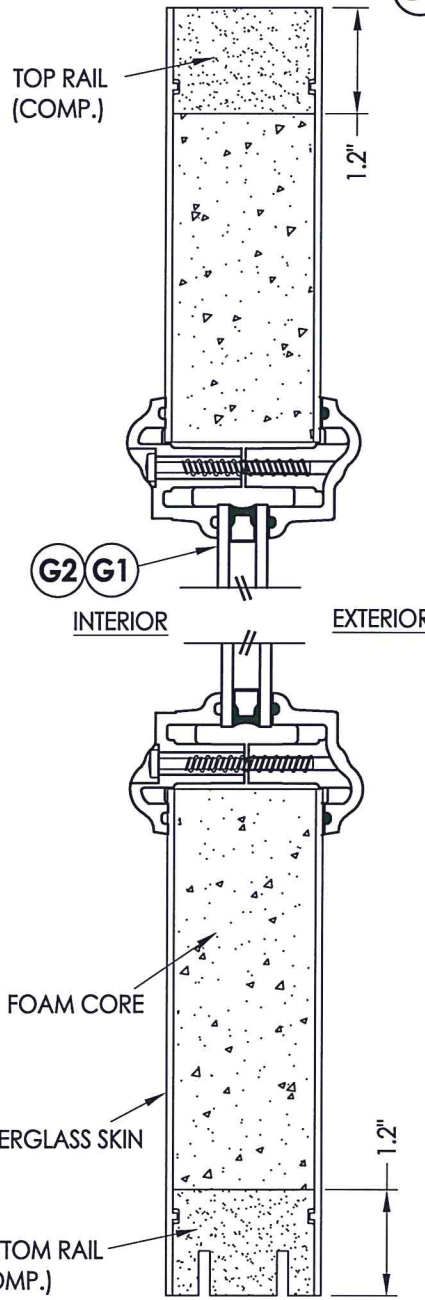


Documents Prepared By: Lyndon F. Schmidt, P.E.
 TEXAS P.E. #104123
RW BUILDING CONSULTANTS, INC.
 P.O. Box 230 Valrico FL 33595
 Phone No.: 813.659.9197
 TEXAS BOARD OF PROFESSIONAL ENGINEERS
 CERTIFICATE OF REGISTRATION # F-11852

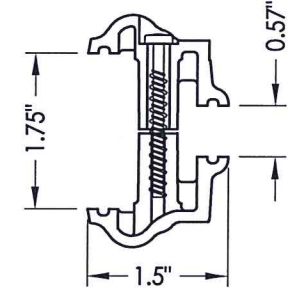


50 PLASTPRO SIDELITE PANEL

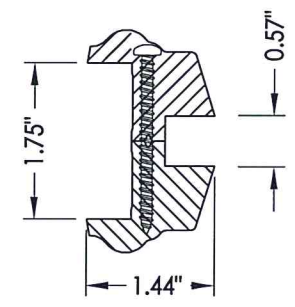
FIBERGLASS DOOR SKIN: MIN. 0.086" THK.
 CORE MATERIAL: POLYURETHANE FOAM
 (1.9 PCF MIN.)



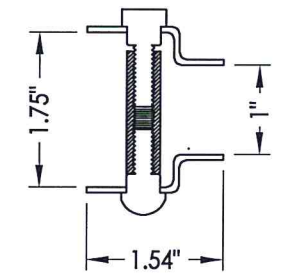
2 VERTICAL CROSS SECTION
3



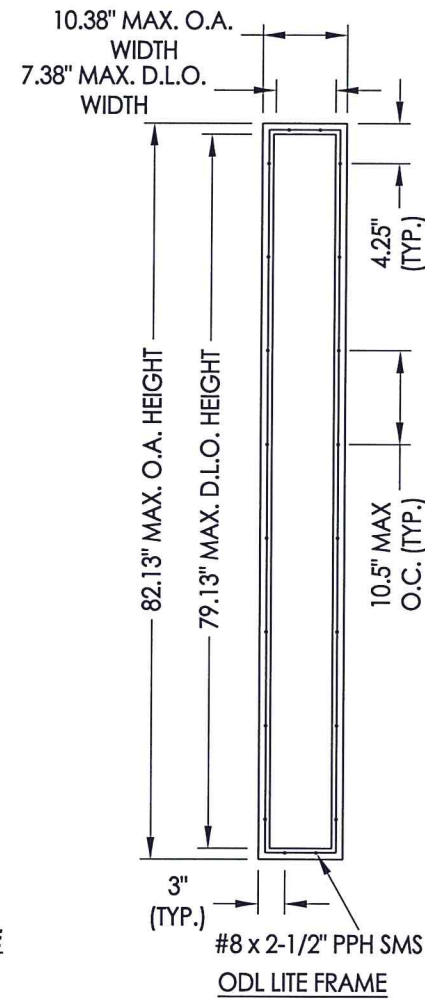
3A ODL LITE FRAME
 HP Polypropylene



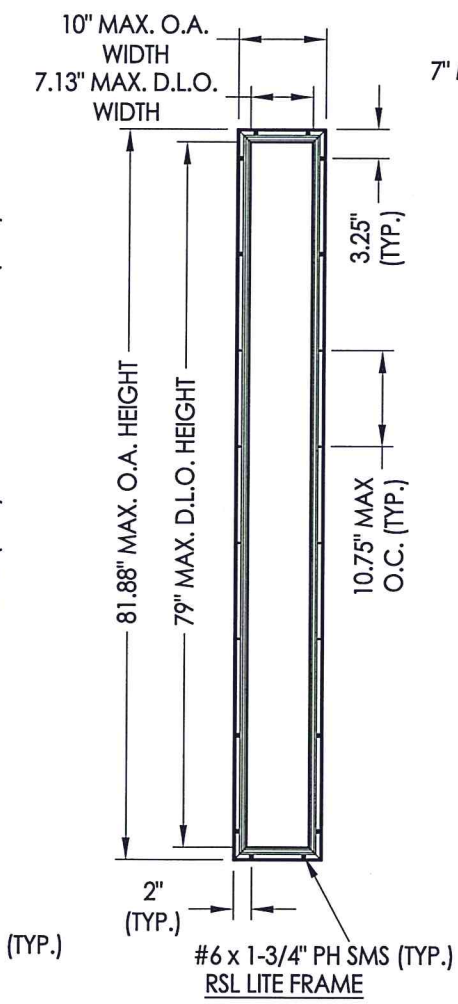
3B RSL LITE FRAME
 PVC



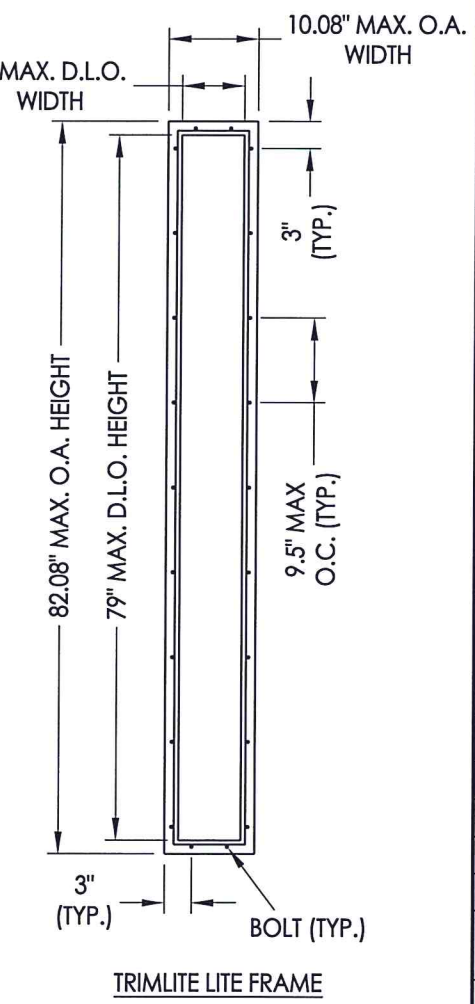
3C TRIMLITE LITE FRAME
 Wrought Iron



ODL LITE FRAME

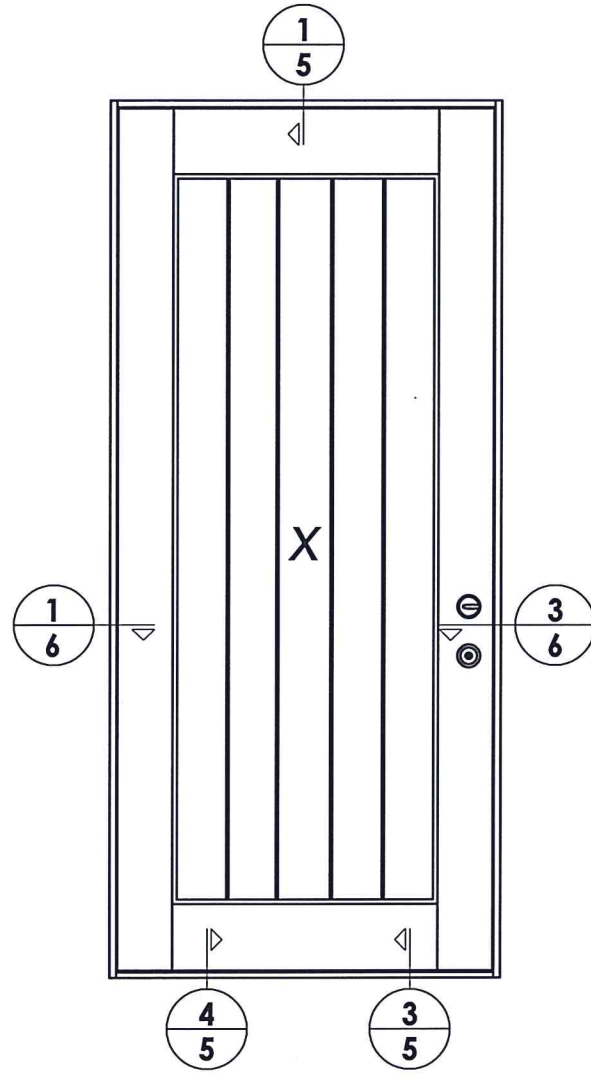


RSL LITE FRAME

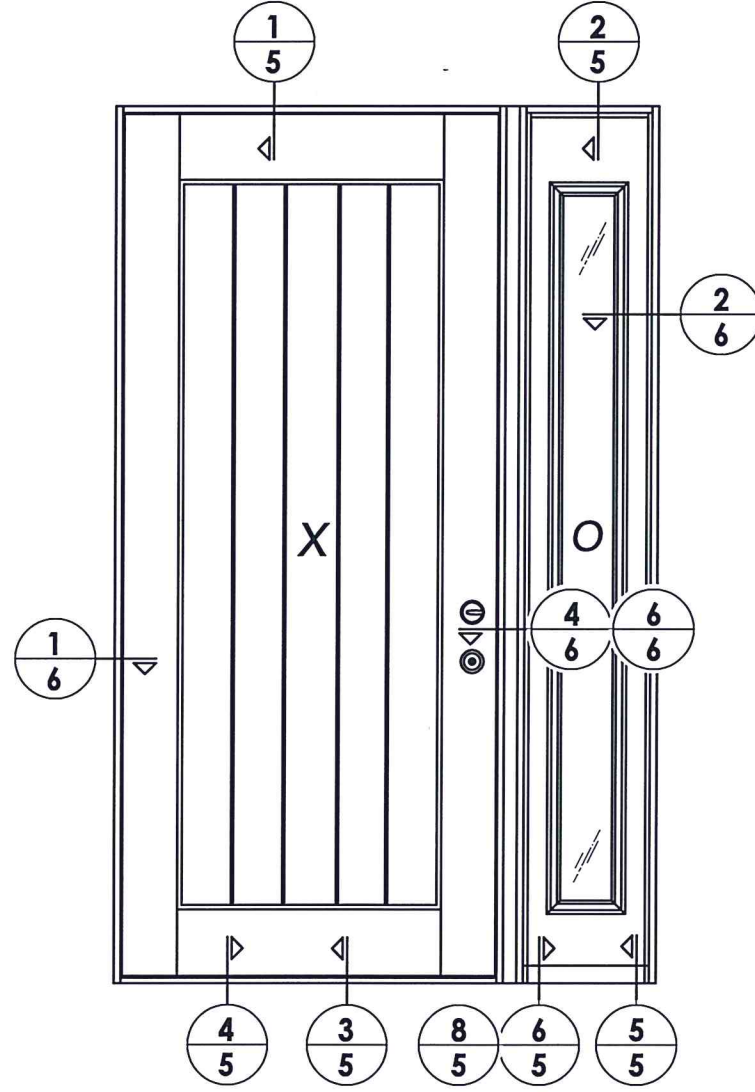


TRIMLITE LITE FRAME

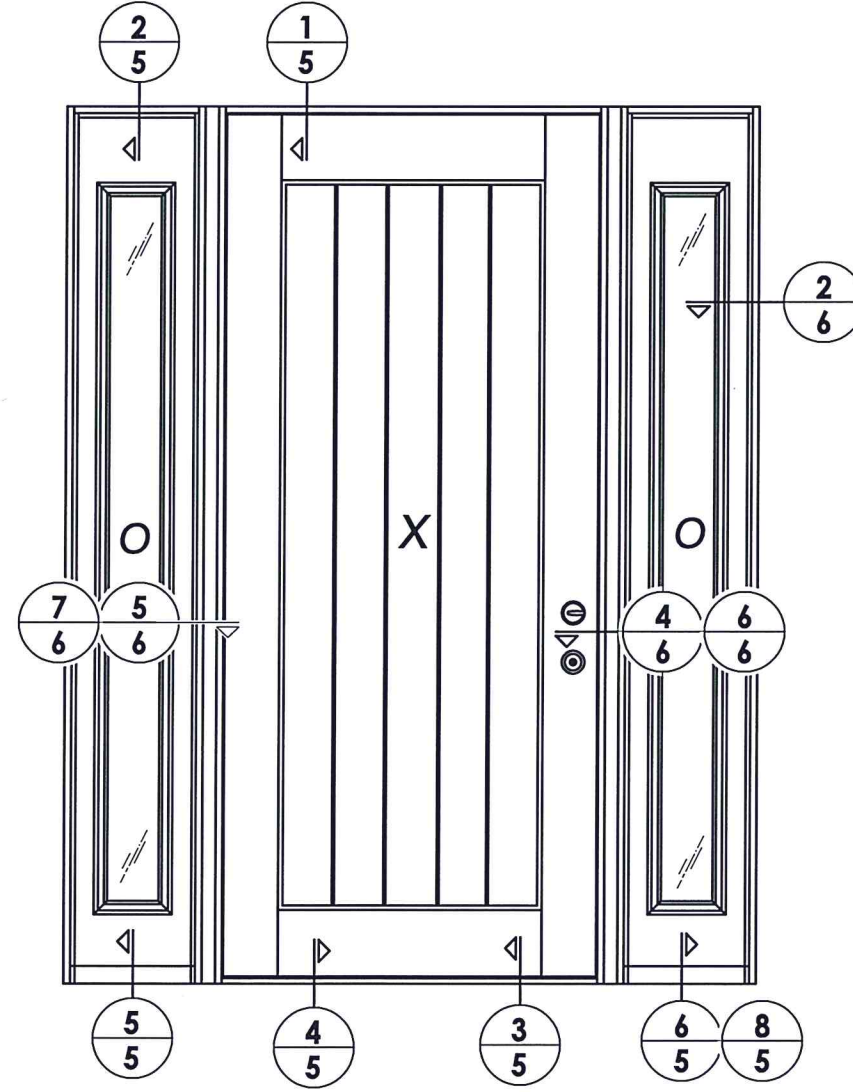
PRODUCT:	PLASTPRO FIBERGLASS DOOR	
PART OR ASSEMBLY:	SIDELITE PANEL DETAILS	
DATE:	11/13/14	
SCALE:	N.T.S.	
DWG. BY:	JK	
CHK. BY:	LFS	
DRAWING NO.:	TX-4481	
SHEET	3 OF 8	
NO.	DATE	REVISIONS
2	5/26/20	UPDATE TO 2018 IBC/IRC CODE
1	4/26/16	ADDED TRIMLITE LITE FRAME
LFS		
BY		



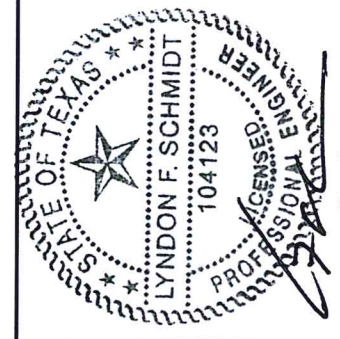
ELEVATION
X



ELEVATION
XO / OX



ELEVATION
OXO



Documents Prepared By: Lyndon F. Schmidt, P.E.
TEXAS P.E. #104123

RW BUILDING CONSULTANTS, INC.
P.O. Box 230 Valrico FL 33595
Phone No.: 813.659.9197

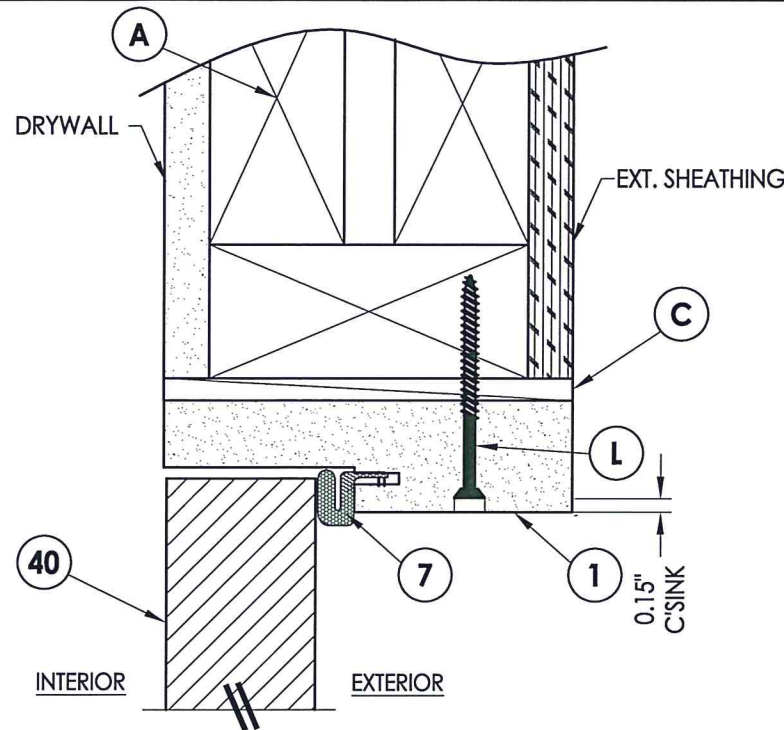
TEXAS BOARD OF PROFESSIONAL ENGINEERS
CERTIFICATE OF REGISTRATION # F-11852

PRODUCT:
PLASTPRO
FIBERGLASS DOOR

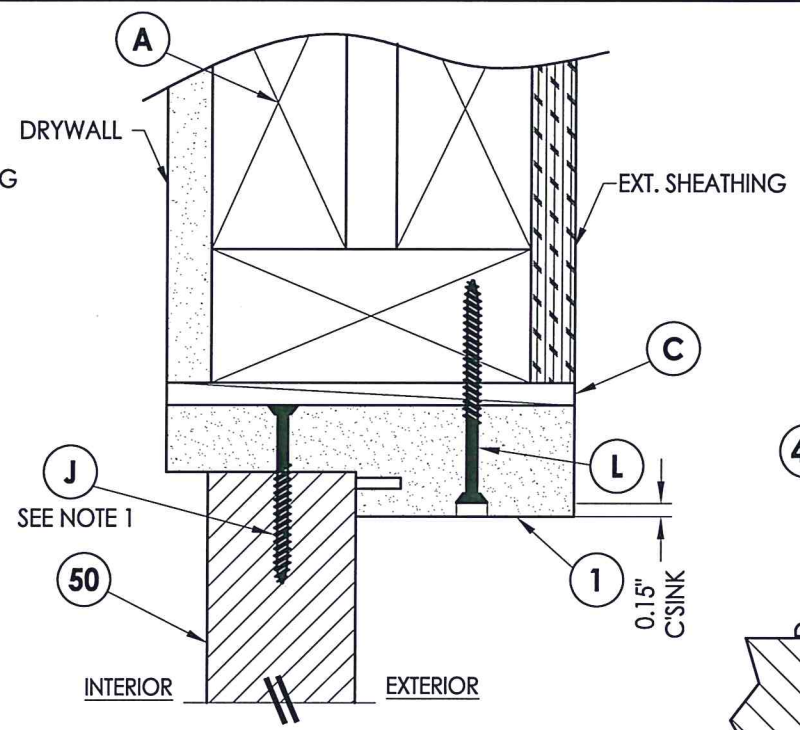
PART OR ASSEMBLY:
ELEVATIONS

NO.	DATE	REVISIONS
2	5/26/20	UPDATE TO 2018 IBC/IRC CODE
1	4/26/16	ADDED TRIMLITE LITE FRAME

DATE: 11/13/14
SCALE: N.T.S.
DWG. BY: JK
CHK. BY: LFS
DRAWING NO.: TX-4481
SHEET 4 OF 8

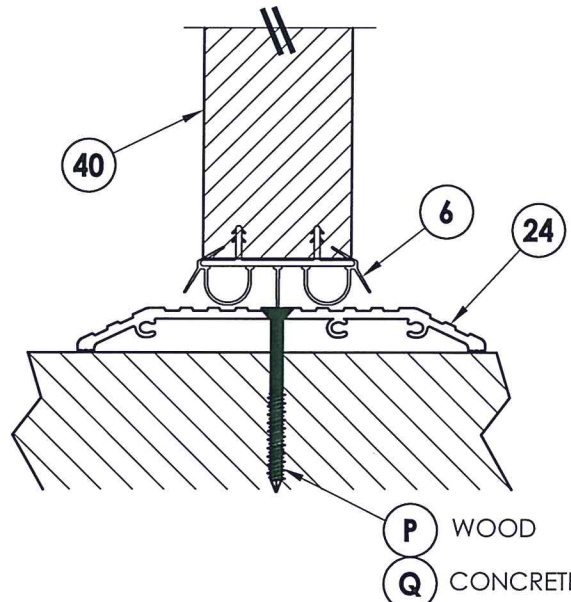


1 VERTICAL CROSS SECTION
5 Inswing shown (Outswing similar)

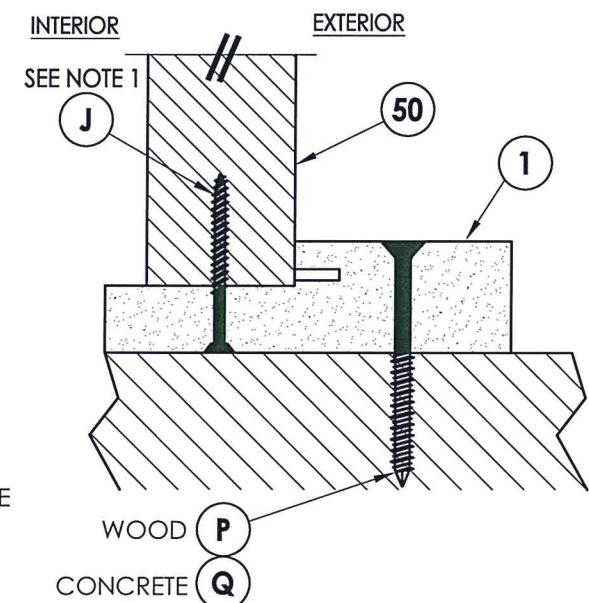


2 VERTICAL CROSS SECTION
5 Inswing shown (Outswing similar)

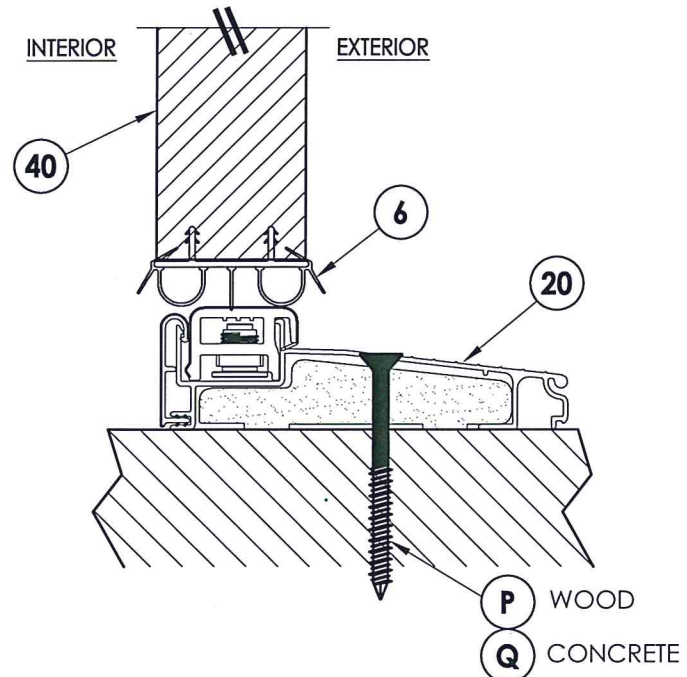
NOTE:
1. Spacing for sidelite to frame screws @ head & sill: 3" from each end (2 total).



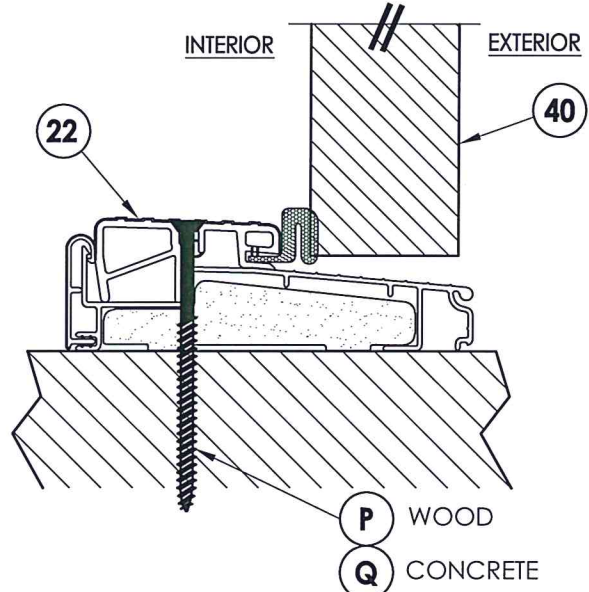
7 VERTICAL CROSS SECTION
5 ADA sill



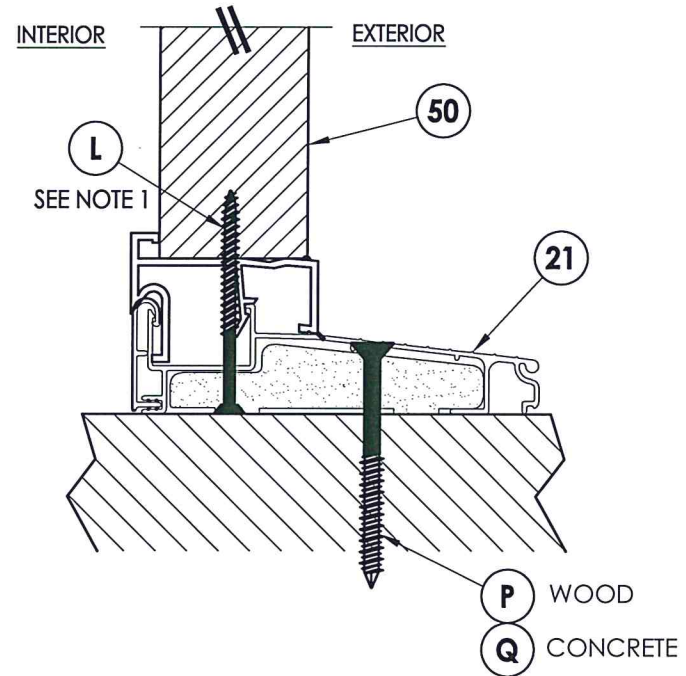
8 VERTICAL CROSS SECTION
5 Inswing shown (Outswing similar)



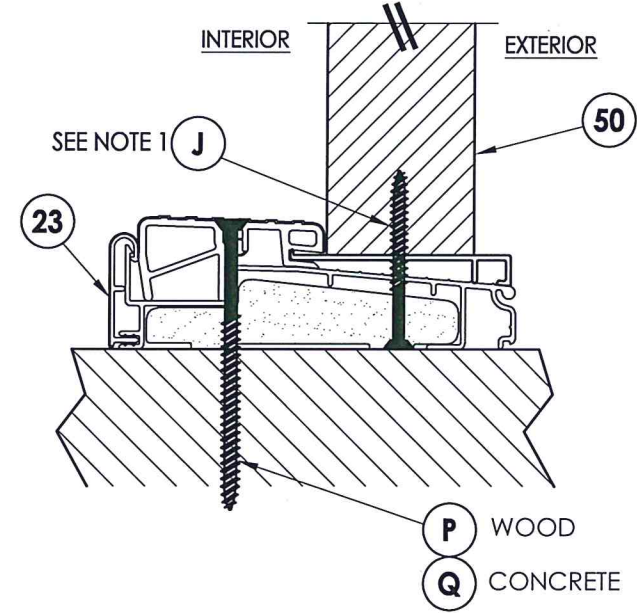
3 VERTICAL CROSS SECTION
5 Inswing sill



4 VERTICAL CROSS SECTION
5 Outswing sill



5 VERTICAL CROSS SECTION
5 Inswing sill



6 VERTICAL CROSS SECTION
5 Outswing sill



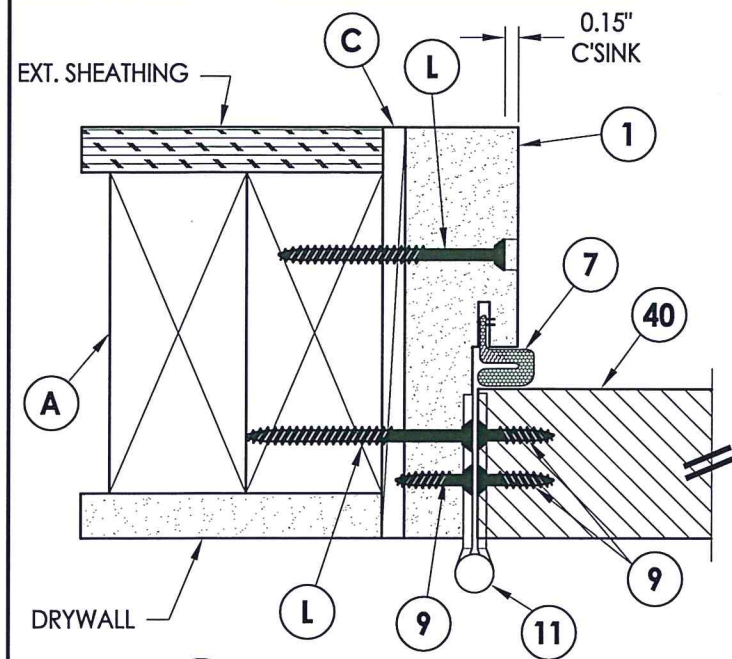
Documents Prepared By: Lyndon F. Schmidt, P.E.
TEXAS P.E. #104123

RW BUILDING CONSULTANTS, INC.
P.O. Box 230 Valrico FL 33595
Phone No.: 813.659.9197

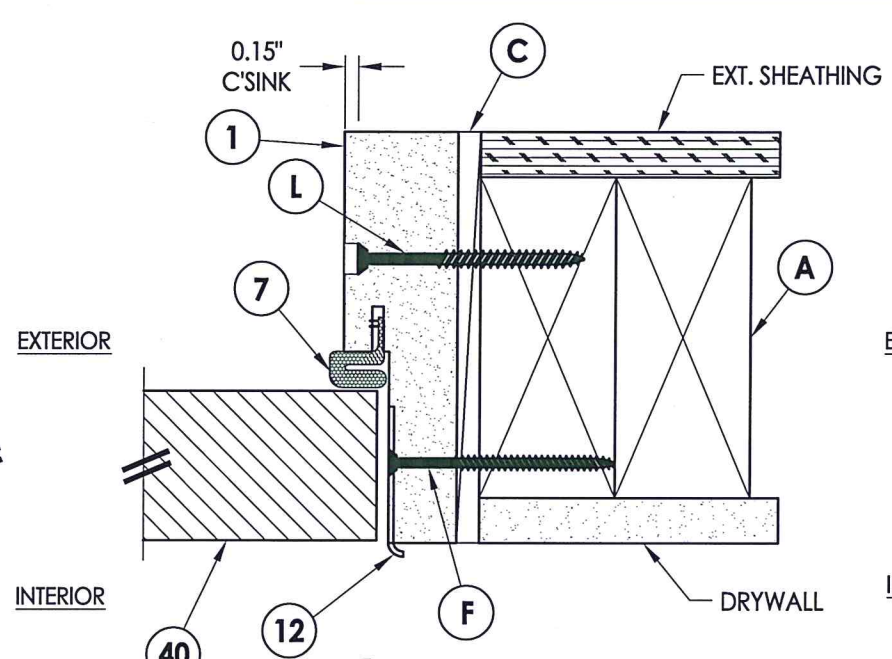
TEXAS BOARD OF PROFESSIONAL ENGINEERS
CERTIFICATE OF REGISTRATION # F-11852

PRODUCT:	PLASTPRO FIBERGLASS DOOR	
PART OR ASSEMBLY:	VERTICAL CROSS SECTIONS	
DATE:	11/13/14	
SCALE:	N.T.S.	
DWG. BY:	JK	
CHK. BY:	LFS	
DRAWING NO.:	TX-4481	
SHEET	5 OF 8	
NO.	DATE	BY
2	5/26/20	LFS
1	4/26/16	LFS
REVISIONS		

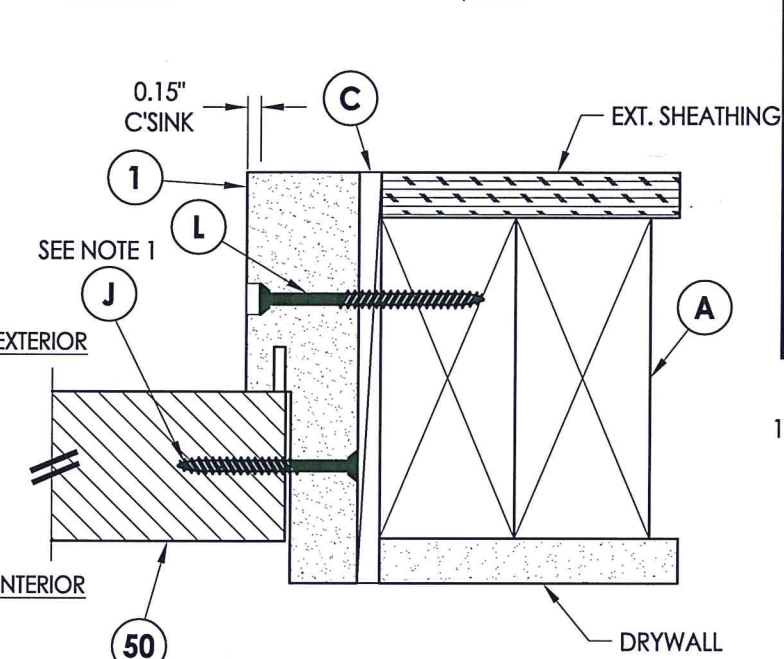
R:\Clients\Plastpro, Inc PERMANENT\B - TD\TDI - DR 629 Rustic 36 x 80 Non-Impact (4-28-16)\Drawings\TX-4481 REV.dwg, 6.3



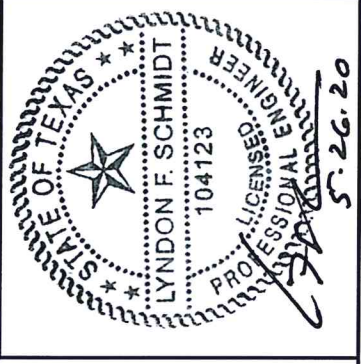
1
6 **HORIZONTAL CROSS SECTION**
Inswing shown (Outswing similar)



3
6 **HORIZONTAL CROSS SECTION**
Inswing shown (Outswing similar)

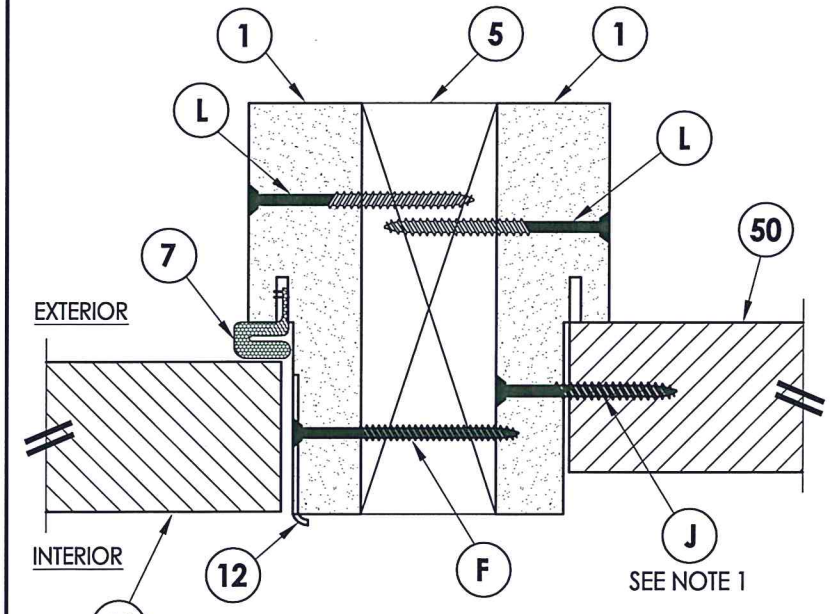


2
6 **HORIZONTAL CROSS SECTION**
Inswing shown (Outswing similar)

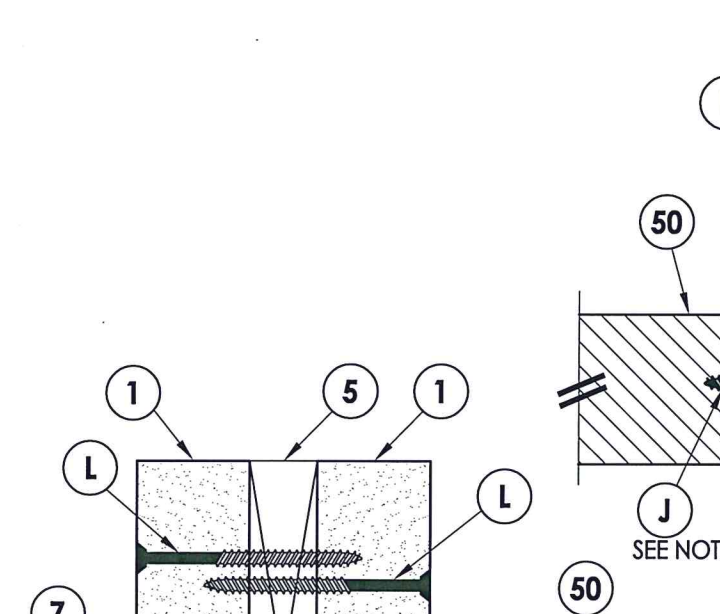


NOTE:
1. Spacing for sidelite to frame screws: 6" from each end and 5 more equally spaced along sidelite jamb (7 total).

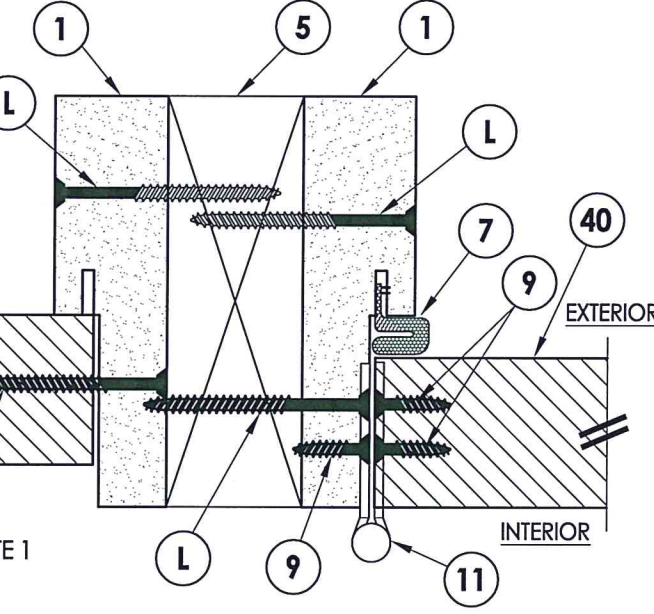
Documents Prepared By: Lyndon F. Schmidt, P.E.
TEXAS P.E. #104123
RW BUILDING CONSULTANTS, INC.
P.O. Box 230 Valrico FL 33595
Phone No.: 813.659.9197
TEXAS BOARD OF PROFESSIONAL ENGINEERS
CERTIFICATE OF REGISTRATION # F-11852



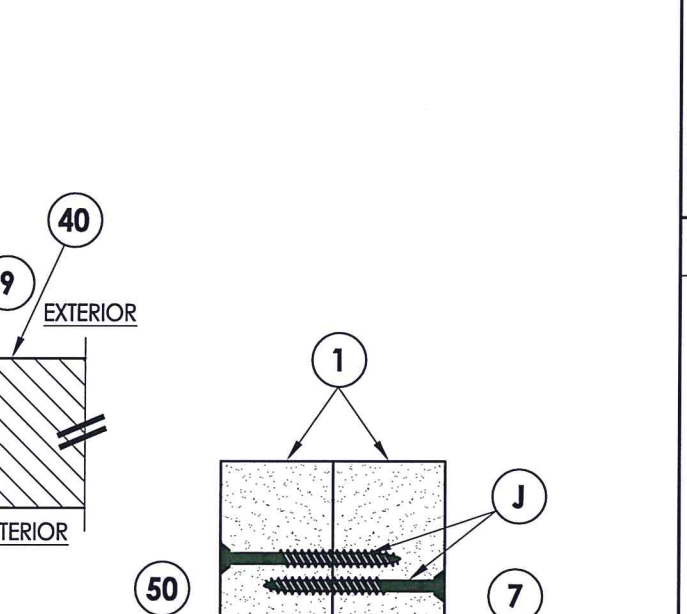
4
6 **HORIZONTAL CROSS SECTION**
Inswing shown (Outswing similar)
(Shown w/ 2X Reinforcement)



6
6 **HORIZONTAL CROSS SECTION**
Inswing shown (Outswing similar)
(Shown w/ 1X Reinforcement)



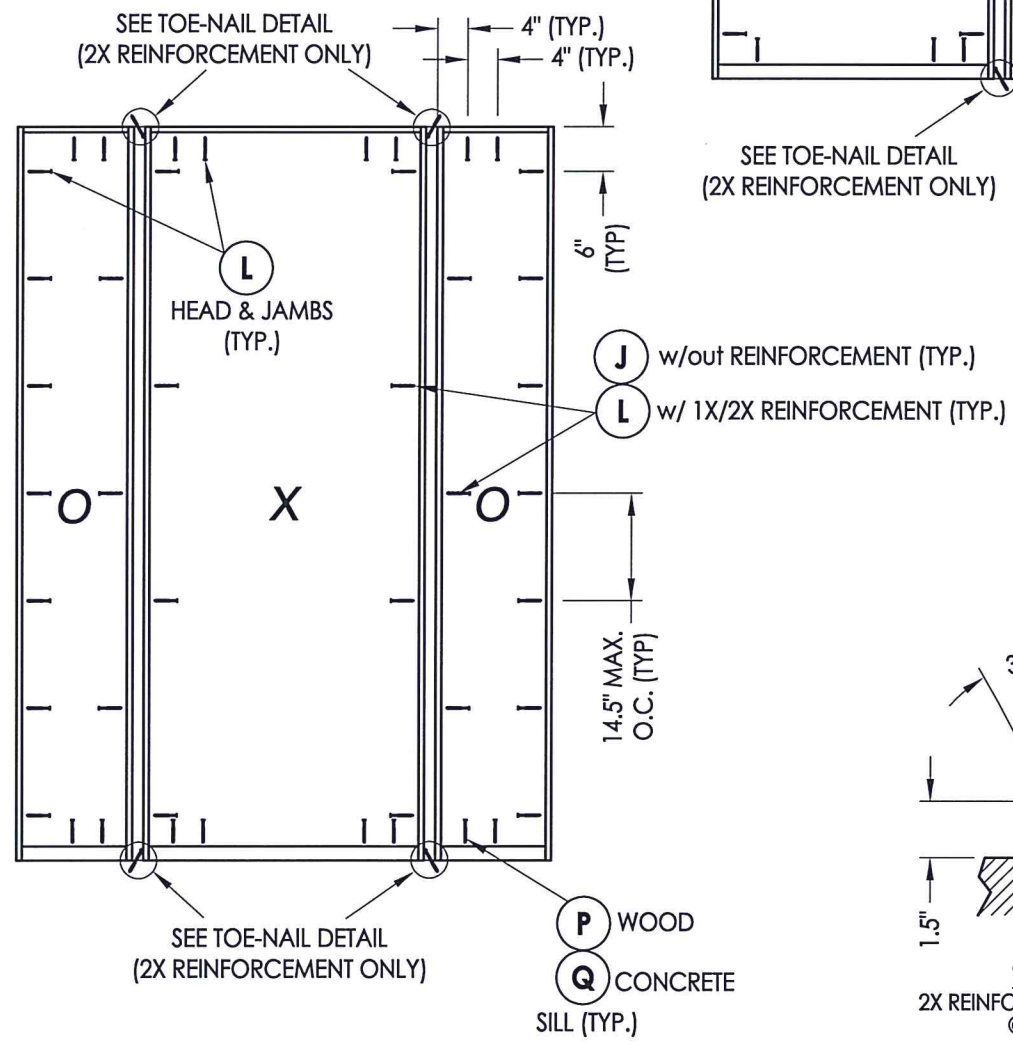
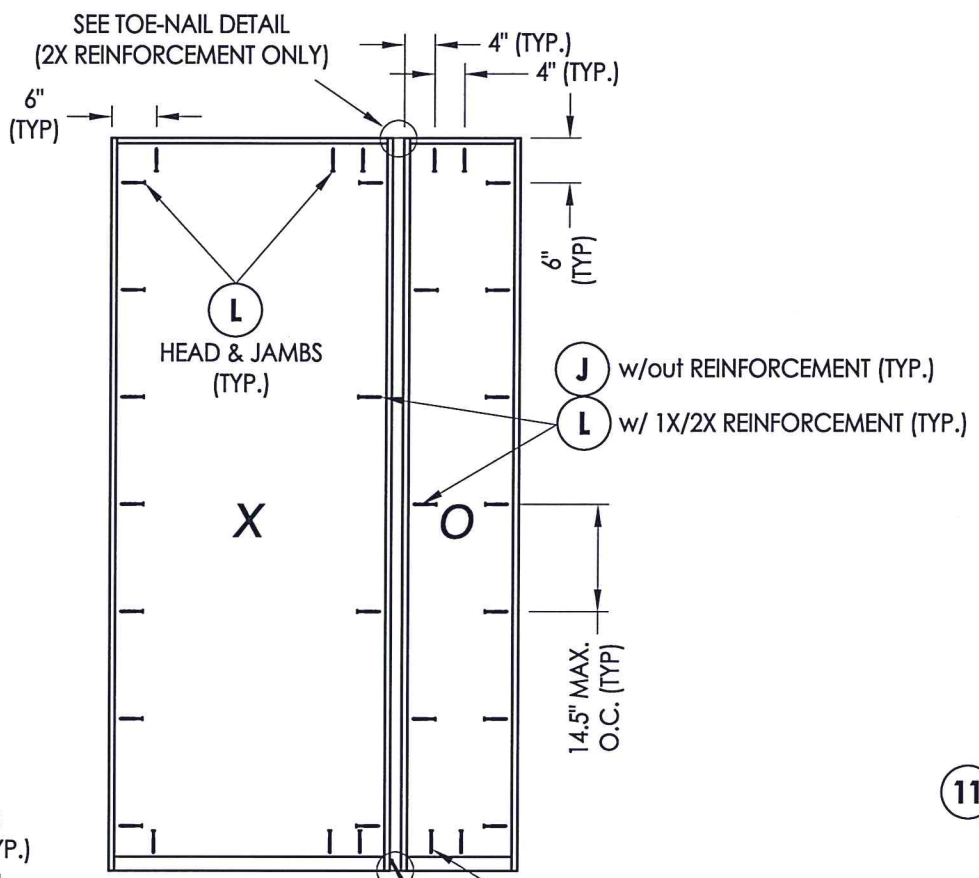
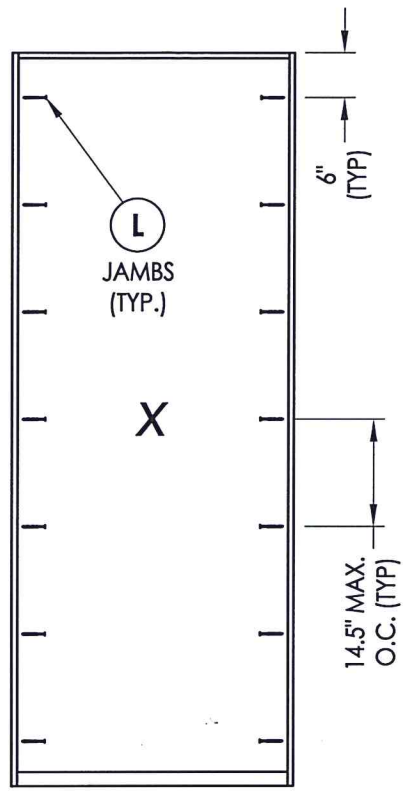
5
6 **HORIZONTAL CROSS SECTION**
Inswing shown (Outswing similar)
(Shown w/ 2X Reinforcement)



7
6 **HORIZONTAL CROSS SECTION**
Inswing shown (Outswing similar)
(Shown w/out Reinforcement)

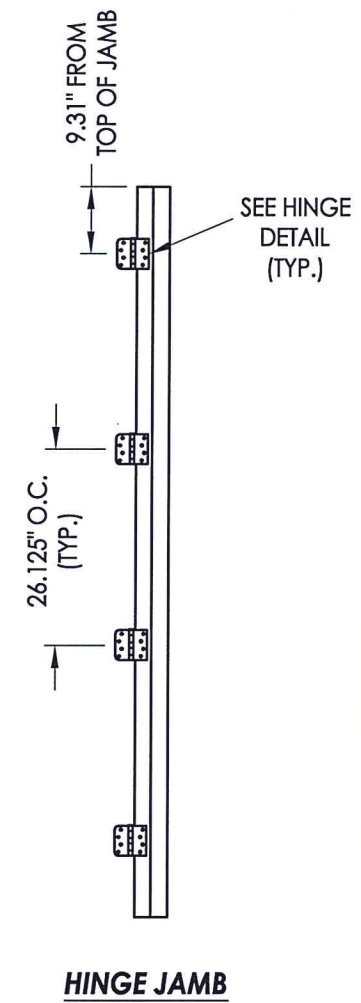
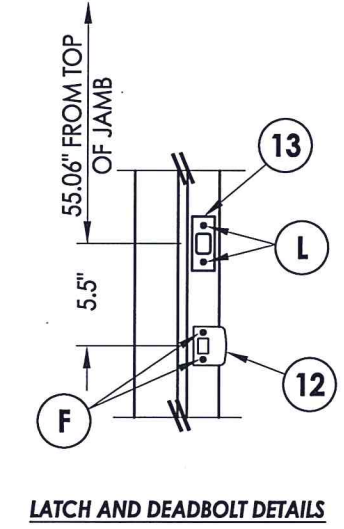
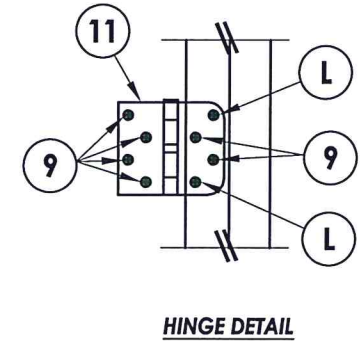
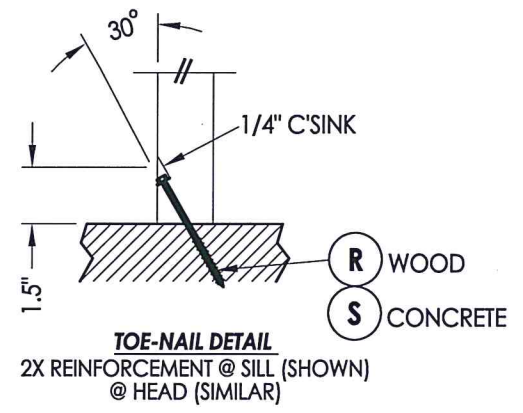
PRODUCT: PLASTPRO FIBERGLASS DOOR		PART OR ASSEMBLY: HORIZONTAL CROSS SECTIONS	
NO.	DATE	BY	REVISIONS
2	5/26/20	LFS	UPDATE TO 2018 IBC/IRC CODE
1	4/26/16	LFS	ADDED TRIMLITE LITE FRAME
DATE: 11/13/14			
SCALE: N.T.S.			
DWG. BY: JK			
CHK. BY: LFS			
DRAWING NO.: TX-4481			
SHEET 6 OF 8			

© 2014 R.W. BUILDING CONSULTANTS INC.

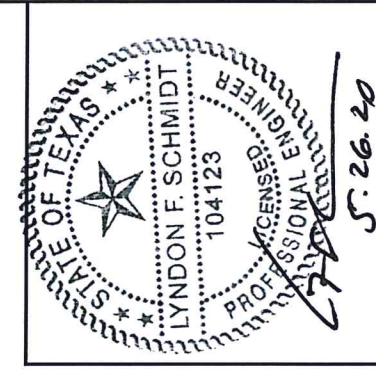


P WOOD
Q CONCRETE
SILL (TYP.)

P WOOD
Q CONCRETE
SILL (TYP.)



FRAME ANCHORING
2X stud framing
w/ wood/concrete substrate



Documents Prepared By: Lyndon F. Schmidt, P.E.
TEXAS P.E. #104123

RW BUILDING CONSULTANTS, INC.
P.O. Box 230 Valrico FL, 33595
Phone No.: 813.659.9197

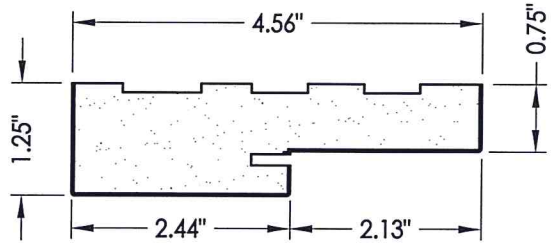
TEXAS BOARD OF PROFESSIONAL ENGINEERS
CERTIFICATE OF REGISTRATION # F-11852

PRODUCT:	PLASTPRO FIBERGLASS DOOR
PART OR ASSEMBLY:	FRAME ANCHORING & HARDWARE DETAILS
DATE:	11/13/14
SCALE:	N.T.S.
DWG. BY:	JK
CHK. BY:	LFS
DRAWING NO.:	TX-4481
SHEET	7 OF 8

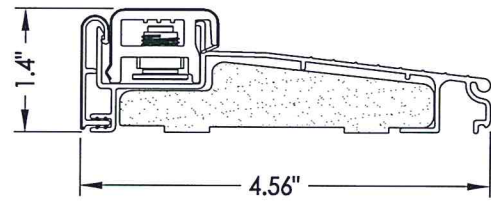
NO.	DATE	BY	REVISIONS
2	5/26/20	LFS	UPDATE TO 2018 IBC/IRC CODE
1	4/26/16	LFS	ADDED TRIMLITE LITE FRAME

BILL OF MATERIALS

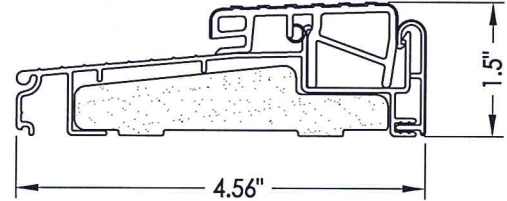
ITEM #	DESCRIPTION	MATERIAL
A	2X FRAMING (SG >= 0.42)	WOOD
C	1/4" MAX. SHIM SPACE	-
F	#8 X 2-1/2" PFH WOOD SCREW	STEEL
J	#10 X 2" PFH WOOD SCREW	STEEL
L	#10 X 2-1/2" PFH WOOD SCREW (1.15" MIN. EMB.)	STEEL
P	#10 PFH WOOD SCREW (1-1/2" MIN. EMB.)	STEEL
Q	1/4" PFH CONCRETE SCREW (1-3/4" MIN. EMB.)	STEEL
R	#10 X 3" HWH SMS (1-1/2" MIN. EMB.)	STEEL
S	3/16" X 3-1/4" HWH CONCRETE SCREW (1-1/2" MIN. EMB.)	STEEL
1	POLY FIBER JAMB	COMP.
5	1X/2X WOOD REINFORCEMENT (SG >= 0.55)	WOOD
6	SWEEP	PVC
7	WEATHERSTRIP (ENDURA FORCE 5)	FOAM
8	WEATHERSTRIP (Q-LON)	FOAM
9	#10 x 1" PFH WOOD SCREW	STEEL
11	4" X 4" HINGE	STEEL
12	LATCH STRIKE PLATE	STEEL
13	DEADBOLT STRIKE PLATE	STEEL
20	INSWING THRESHOLD	ALUM/COMP
21	INSWING THRESHOLD w/ SIDELITE ADAPTER	ALUM/COMP
22	OUTSWING THRESHOLD	ALUM/COMP
23	OUTSWING THRESHOLD w/ SIDELITE ADAPTER	ALUM/COMP
24	ADA THRESHOLD	ALUM
40	DOOR PANEL	-
50	SIDELITE PANEL	-



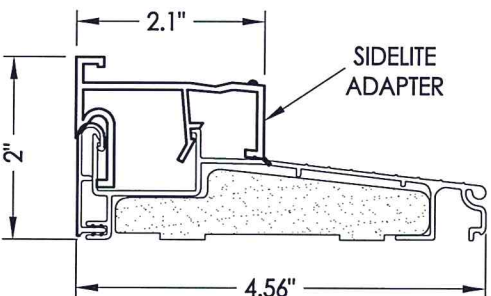
1 POLY FIBER JAMB



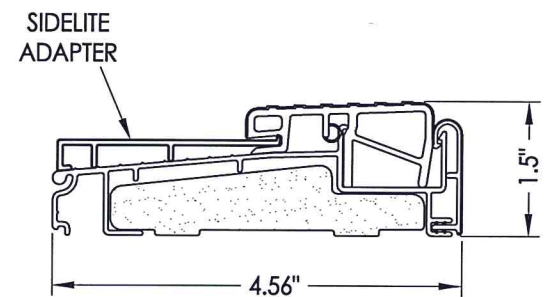
20 INSWING THRESHOLD
Endura (Z-Series)



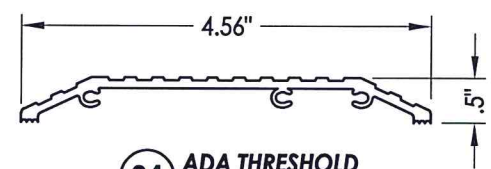
22 OUTSWING THRESHOLD
Endura (Z-Series)



21 INSWING THRESHOLD w/ SIDELITE ADAPTER
Endura (Z-Series)



23 OUTSWING THRESHOLD w/ SIDELITE ADAPTER
Endura (Z-Series)



24 ADA THRESHOLD
DLP

CONCRETE ANCHOR NOTES:

- Concrete anchor locations at the corners may be adjusted to maintain the min. edge distance to mortar joints.
- Concrete anchor locations noted as "MAX. ON CENTER" must be adjusted to maintain the min. edge distance to mortar joints, additional concrete anchors may be required to ensure the "MAX. ON CENTER" dimension are not exceeded.
- Concrete anchor table:

ANCHOR TYPE	ANCHOR SIZE	MIN. EMBEDMENT	MIN. CLEARANCE TO MASONRY EDGE	MIN. CLEARANCE TO ADJACENT ANCHOR
ITW TAPCON®	1/4"	1-3/4"	2"	4"
ELCO ULTRACON®	1/4"	1-3/4"	1"	4"



Documents Prepared By: Lyndon F. Schmidt, P.E.
TEXAS P.E. #104123

RW BUILDING CONSULTANTS, INC.
P.O. Box 230 Vairico FL 33595
Phone No.: 813.659.9197

TEXAS BOARD OF PROFESSIONAL ENGINEERS
CERTIFICATE OF REGISTRATION # F-11852

PRODUCT: PLASTPRO FIBERGLASS DOOR		PART OR ASSEMBLY: BILL OF MATERIALS & COMPONENTS	
NO.	DATE	REVISIONS	BY
2	5/26/20	UPDATE TO 2018 IBC/IRC CODE	LFS
1	4/26/16	ADDED TRIMLITE LITE FRAME	LFS
DATE: 11/13/14			
SCALE: N.T.S.			
DWG. BY: JK			
CHK. BY: LFS			
DRAWING NO.: TX-4481			
SHEET 8 OF 8			