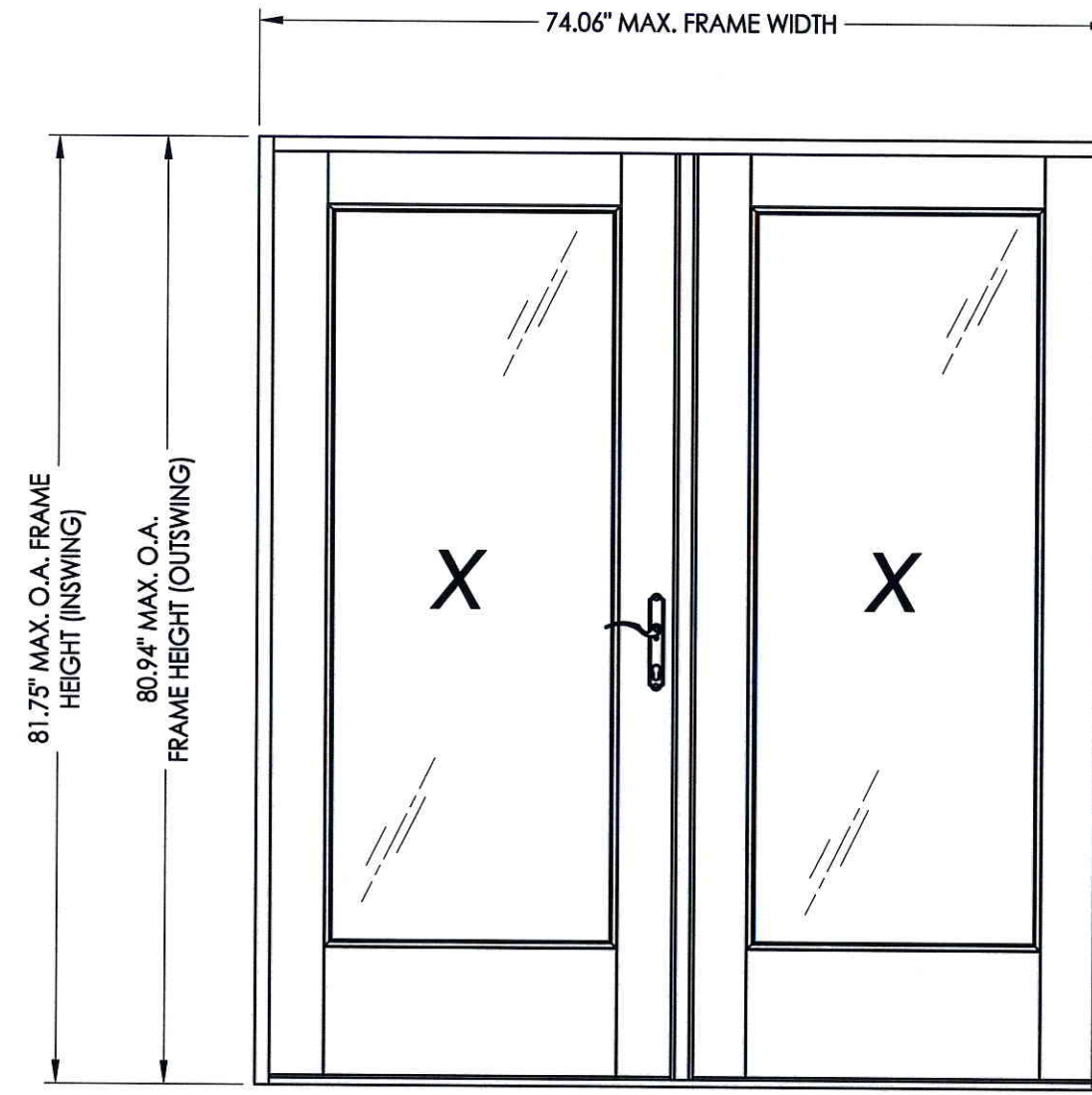
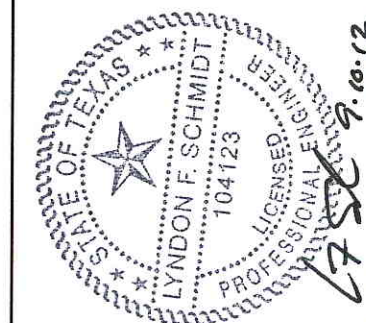




8811 West Market Street  
Colfax, NC 27235

## Glazed Fiberglass Door

**"NON-IMPACT"**  
INSWING / OUTSWING



**EVALUATED FOR USE IN THE STATE OF TEXAS**

The Glazed Steel Door system described herein complies with the 2006 International Residential Code (IRC), Sections R301 & R613 and the 2006 International Building Code (IBC), Sections 1405.12, 1609, 1714.5, 2403 and 2404 (including Texas revisions) subject to the following conditions:

1. Anchors shall be as listed and spaced as shown in the details. Anchor embedment to base material shall be beyond wall dressing or stucco.
2. When used in areas requiring wind-borne debris protection this product is required to be protected with an impact resistant covering that complies with Section R301.2.1.2 of the IRC and Section 1609.1.2 of the IBC.
3. Allowable design pressure requirements must be equal to or less than the design pressure rating shown in the design pressure chart, sheet 1 of this drawing.
4. Conditions not covered by this drawing are subject to further engineering analysis.

TABLE OF CONTENTS	
SHEET#	DESCRIPTION
1	Typical elevations, design pressures & general notes
2	Astragal details (Ultimate Hoppe)
3	Lock details (Hoppe HLS 9000)
4	Door panel details (Fiber Classic - flush glazed)
5	Door panel details (Smooth Star - flush glazed)
6	Horizontal cross sections
7	Vertical cross sections
8	Frame anchoring

CONFIG.	MODEL	DESIGN PRESSURE (PSF) INSWING		DESIGN PRESSURE (PSF) OUTSWING	
		POSITIVE	NEGATIVE	POSITIVE	NEGATIVE
XX	<i>FIBER CLASSIC</i>	<b>+35.0</b>	<b>-35.0</b>	<b>+40.0</b>	<b>-40.0</b>
	<i>SMOOTH STAR</i>	<b>+35.0</b>	<b>-35.0</b>	<b>+45.0</b>	<b>-45.0</b>

Documents Prepared By: Lyndon F. Schmidt, P.E.  
TEXAS P.E. #104123

**RW** BUILDING CONSULTANTS, INC.  
P.O. Box 230 Vairico FL 33595  
Phone No.: 813.659.9197

TEXAS BOARD OF PROFESSIONAL ENGINEERS  
CERTIFICATE OF REGISTRATION # F-11852

---

PRODUCT: ENDURA

PART OR ASSEMBLY: TYPICAL ELEVATION, DESIGN PRESSURES & GENERAL NOTES

NO.	DATE	BY	REVISIONS

DATE: 9/06/12

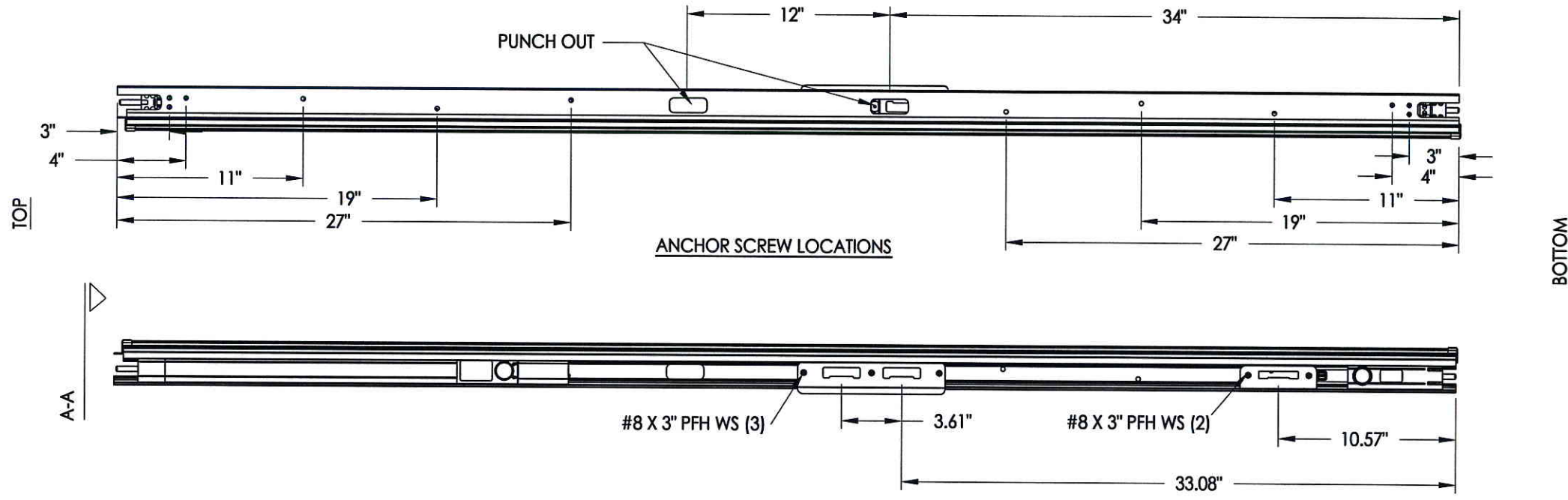
SCALE: N.T.S.

DWG. BY: JK

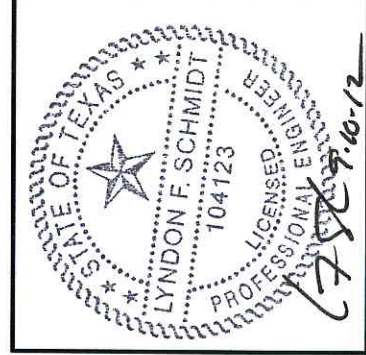
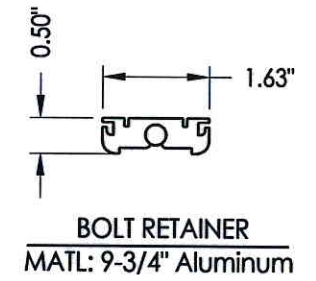
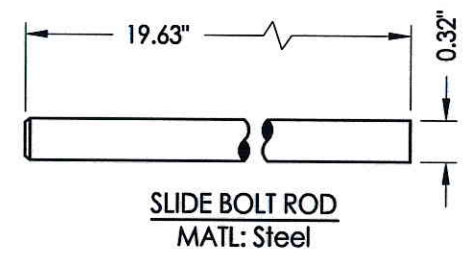
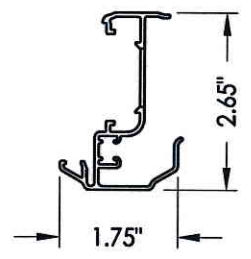
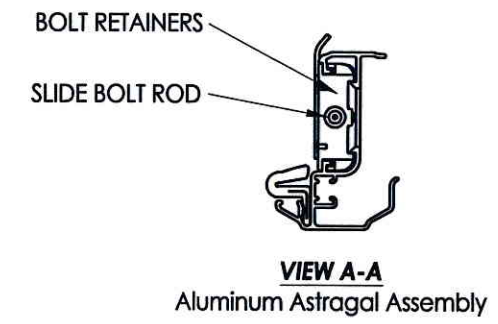
CHK. BY: LFS

DRAWING NO.: TX-4216

SHEET 1 OF 8



**6'-8" ALUMINUM ASTRAGAL ASSEMBLY**  
By Endura



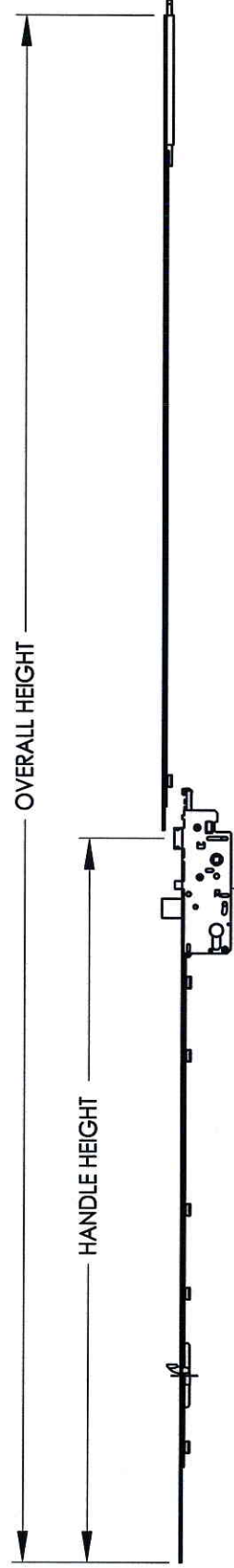
Documents Prepared By: Lyndon F. Schmidt, P.E.  
TEXAS P.E. #104123

**RW** BUILDING CONSULTANTS, INC.  
P.O. Box 230 Valrico FL, 33595  
Phone No.: 813.659.9197

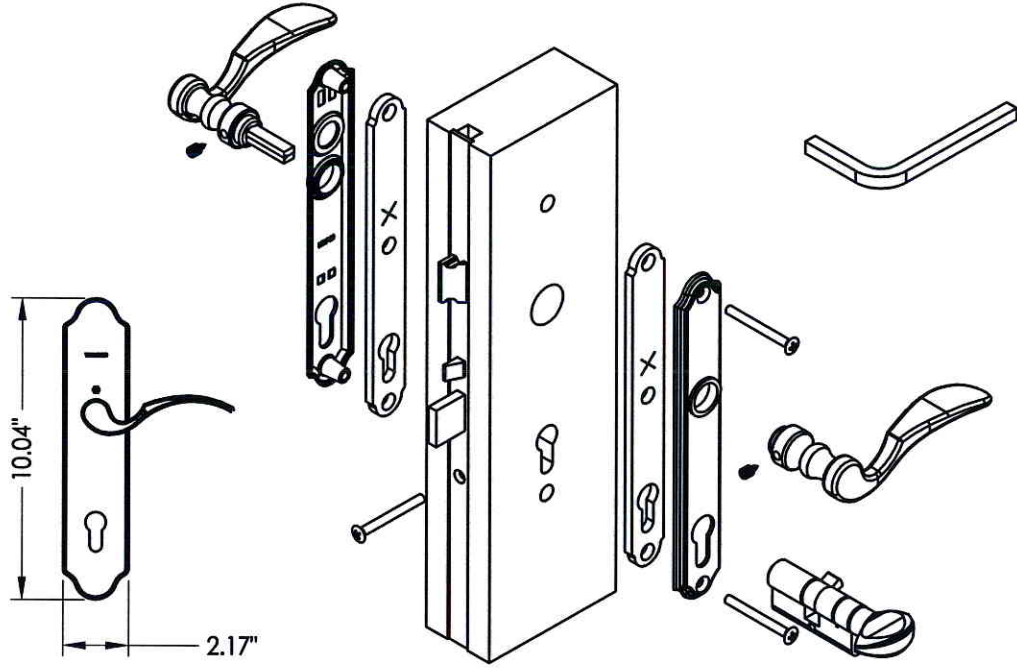
TEXAS BOARD OF PROFESSIONAL ENGINEERS  
CERTIFICATE OF REGISTRATION # F-11852

PRODUCT: ENDURA	
PART OR ASSEMBLY: ASTRAGAL DETAILS (ULTIMATE HOPPE)	
NO.	DATE
BY	REVISIONS
DATE: 9/06/12	
SCALE: N.T.S.	
DWG. BY: JK	
CHK. BY: LFS	
DRAWING NO.: TX-4216	
SHEET 2 OF 8	

MANUAL TONGUE/SHOOTBOLT GEAR SYSTEM

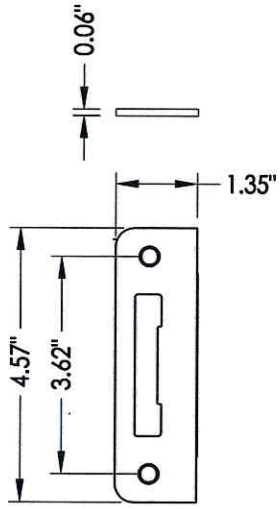


HOPPE MULTI-POINT LOCKSET

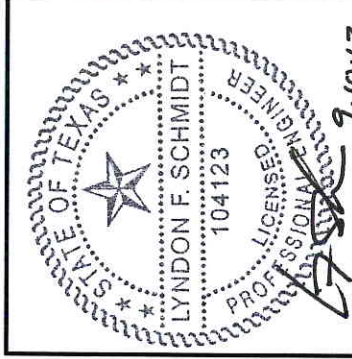
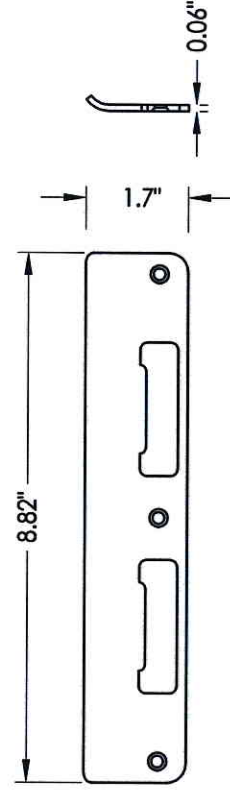


HOPPE MULTI-POINT LOCKSET  
Manual Tongue/Shootbolt

MULTI-POINT STRIKE PLATE



LATCH & DEADBOLT STRIKE PLATE



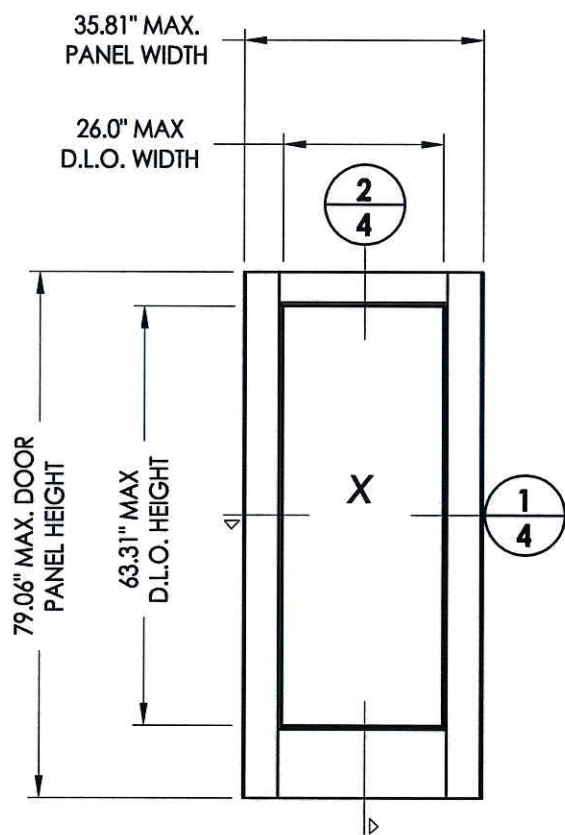
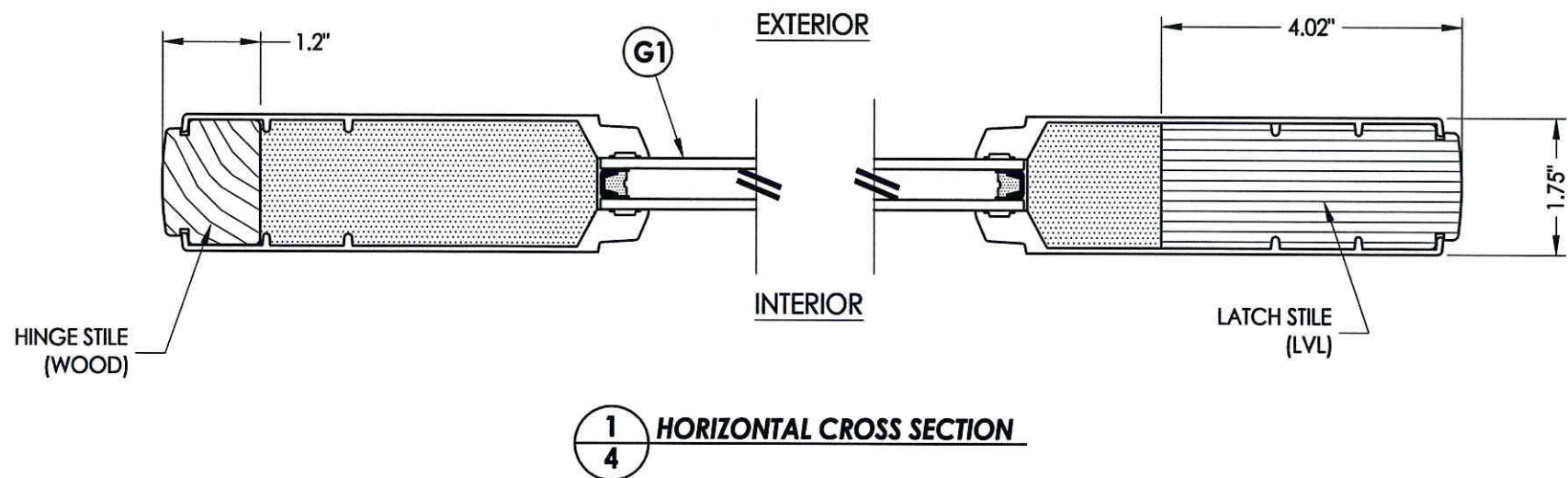
Documents Prepared By: Lyndon F. Schmidt, P.E.  
TEXAS P.E. #104123

**RW** BUILDING CONSULTANTS, INC.  
P.O. Box 230 Valrico FL 33595  
Phone No.: 813.659.9197  
TEXAS BOARD OF PROFESSIONAL ENGINEERS  
CERTIFICATE OF REGISTRATION # F-11852

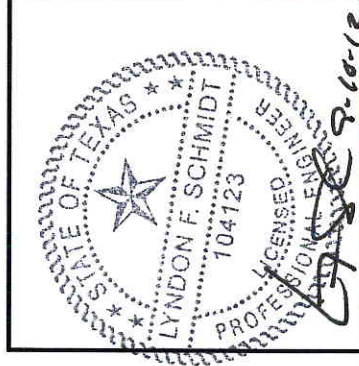
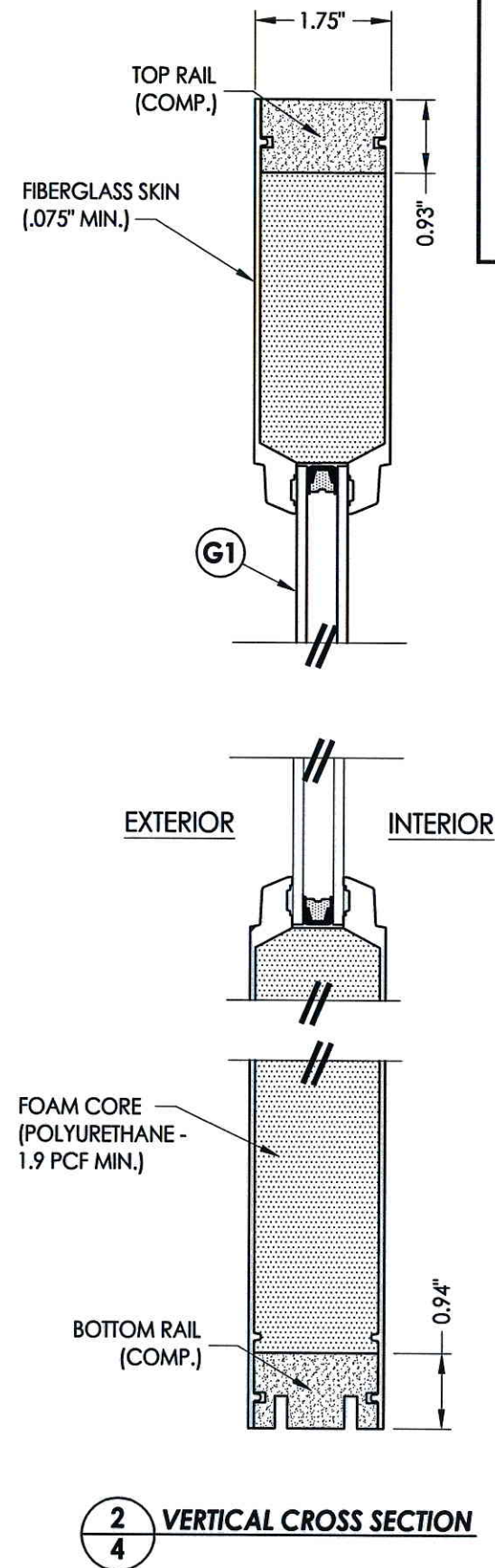
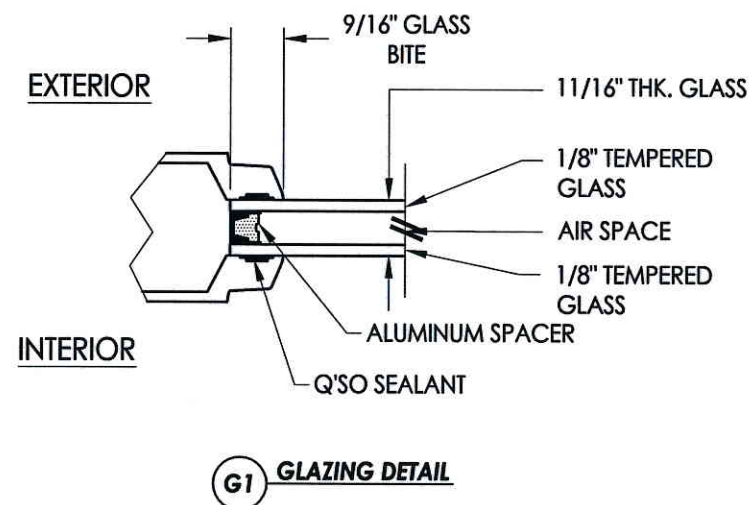
PRODUCT:	ENDURA
PART OR ASSEMBLY:	LOCK DETAILS (HOPPE HLS 9000)

NO.	DATE	BY	REVISIONS

DATE: 9/06/12  
SCALE: N.T.S.  
DWG. BY: JK  
CHK. BY: LFS  
DRAWING NO.: TX-4216  
SHEET 3 OF 8



**THERMA TRU - Fiber Classic Panel**  
Flush glazed  
(fiberglass)



Documents Prepared By: Lyndon F. Schmidt, P.E.  
TEXAS P.E. #104123

**RW** BUILDING CONSULTANTS, INC.  
P.O. Box 230 Vairico FL 33595  
Phone No.: 813.659.9197

TEXAS BOARD OF PROFESSIONAL ENGINEERS  
CERTIFICATE OF REGISTRATION # F-11852

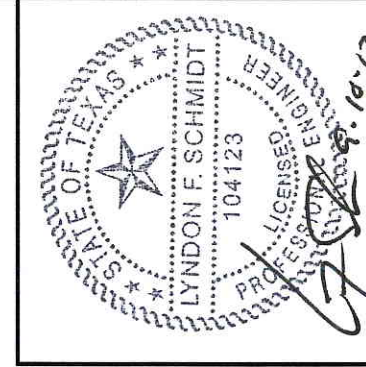
PRODUCT: ENDURA

PART OR ASSEMBLY:  
DOOR PANEL DETAILS  
(FIBER CLASSIC - FLUSH GLAZED)

NO.	DATE	REVISIONS	BY

DATE: 9/06/12  
SCALE: N.T.S.  
DWG. BY: JK  
CHK. BY: LFS  
DRAWING NO.: TX-4216  
SHEET 4 OF 8

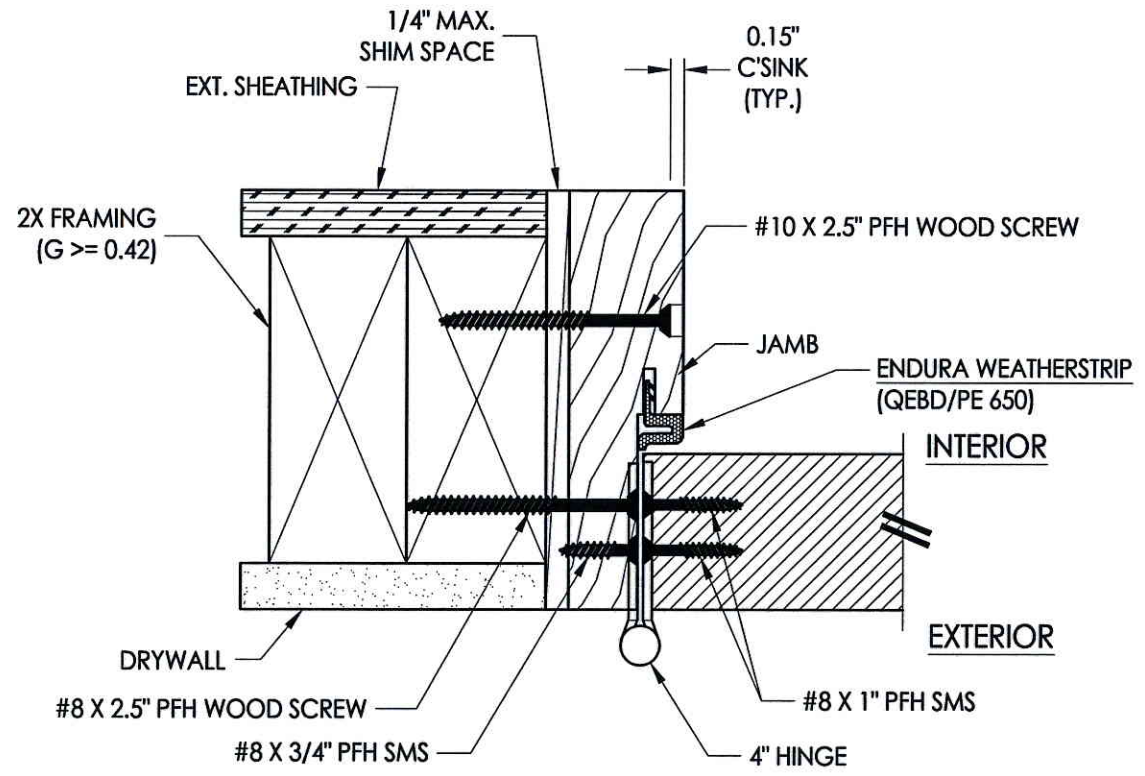
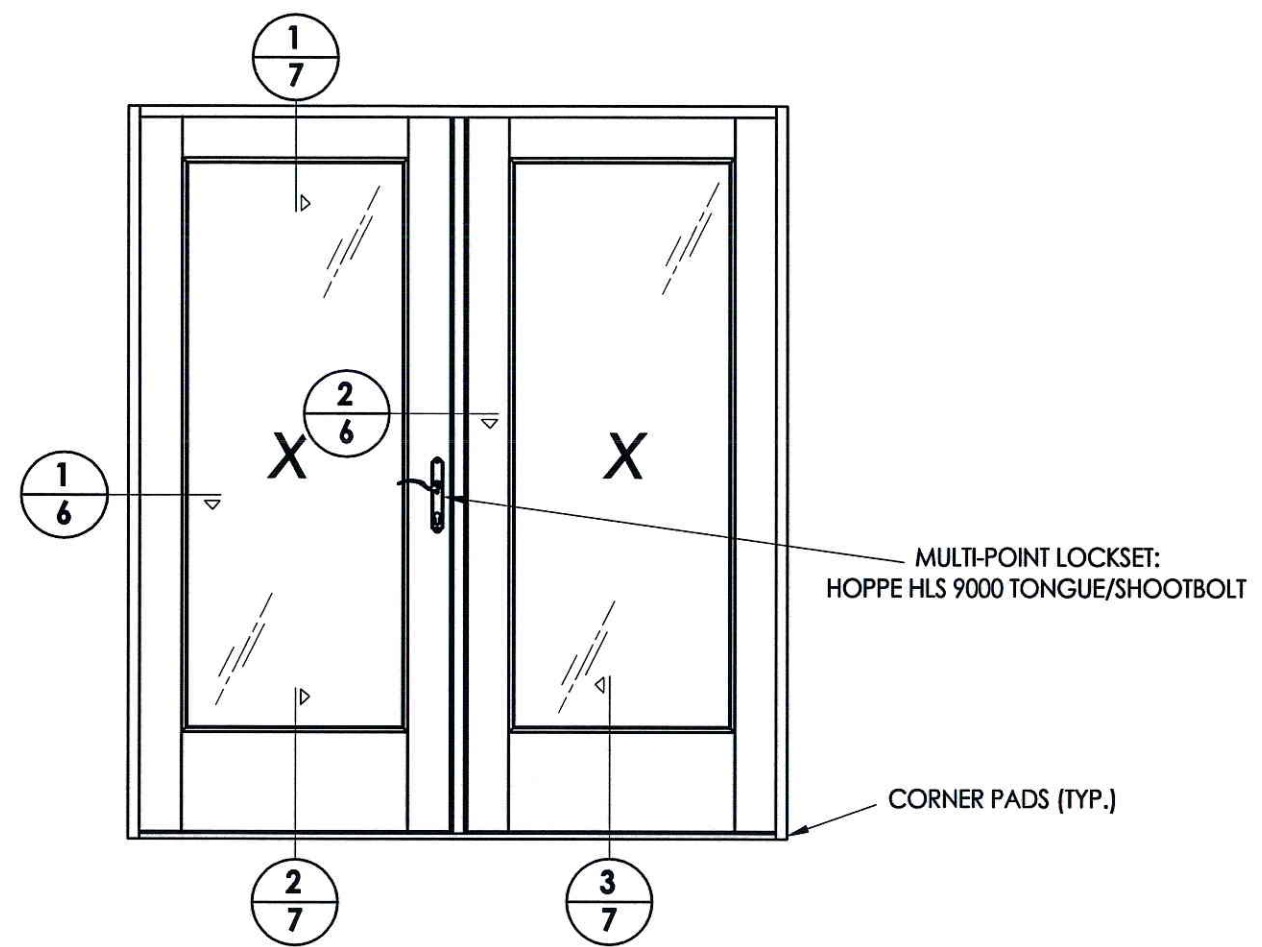




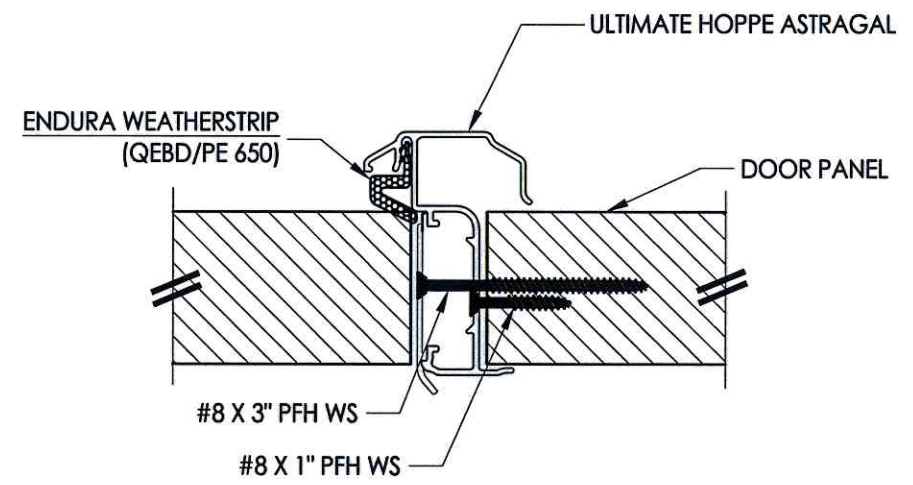
Documents Prepared By: Lyndon F. Schmidt, P.E.  
TEXAS P.E. #104123

**RW** BUILDING CONSULTANTS, INC.  
P.O. Box 230 Valrico FL 33595  
Phone No.: 813.659.9197

TEXAS BOARD OF PROFESSIONAL ENGINEERS  
CERTIFICATE OF REGISTRATION # F-11852



**1**  
**6** **HORIZONTAL CROSS SECTION**  
Inswing shown - Outswing also approved



**2**  
**6** **HORIZONTAL CROSS SECTION**

PRODUCT: ENDURA

PART OR ASSEMBLY: HORIZONTAL CROSS SECTIONS

NO.	DATE	REVISIONS	BY

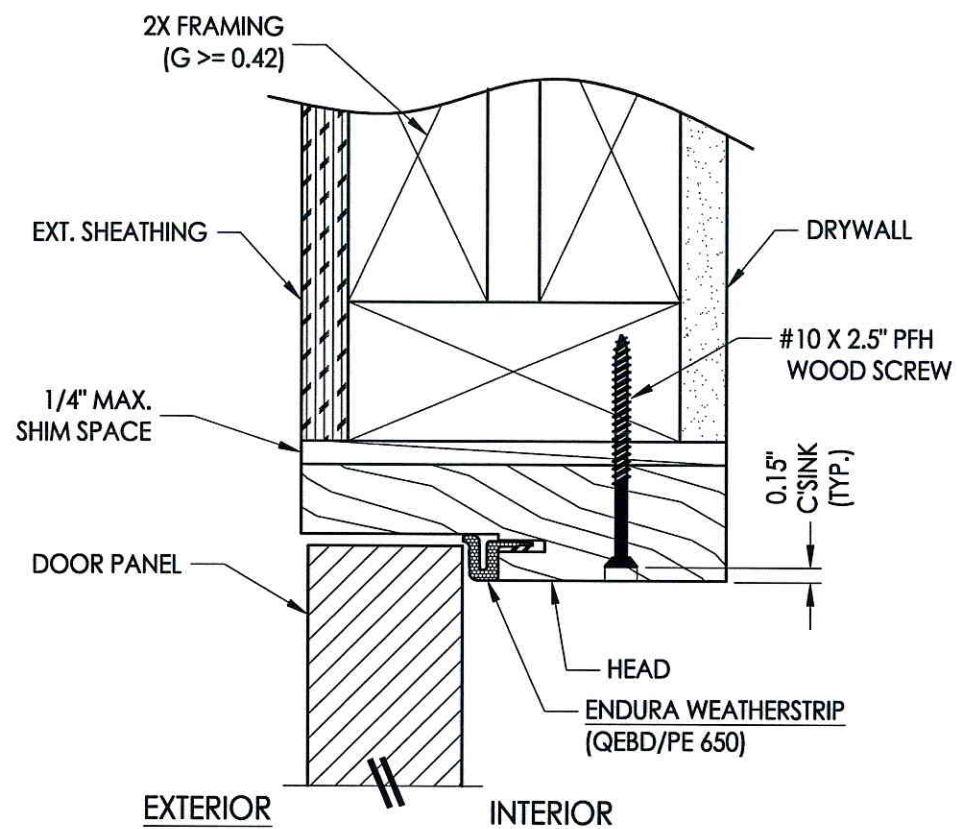
DATE: 9/06/12  
SCALE: N.T.S.  
DWG. BY: JK  
CHK. BY: LFS  
DRAWING NO.: TX-4216  
SHEET 6 OF 8

R:\A - Projects\Project Folders\Proj 1601 - 1700\PF 1675\ID\_RWBC Drawings\TX-4216-19.dwg, 1-7-

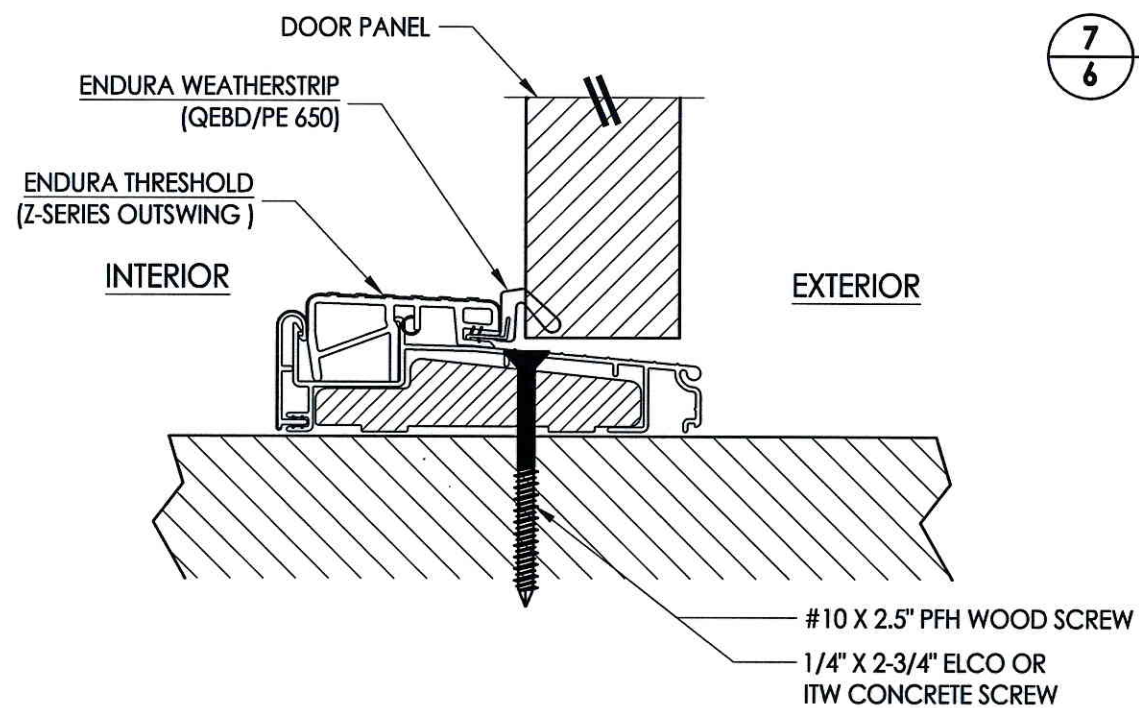
STATE OF TEXAS  
 LYNDON F. SCHMIDT  
 104123  
 LICENSED PROFESSIONAL ENGINEER

Documents Prepared By: Lyndon F. Schmidt, P.E. TEXAS P.E. #104123  
**RW** BUILDING CONSULTANTS, INC.  
 P.O. Box 230 Valrico FL, 33595  
 Phone No.: 813.659.9197

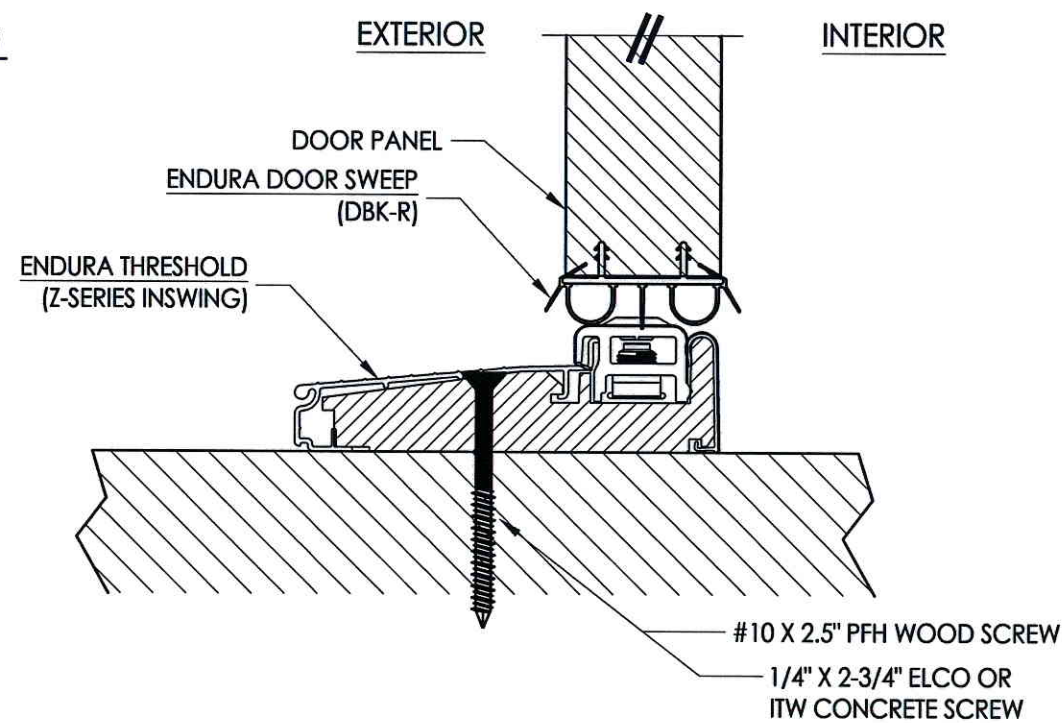
TEXAS BOARD OF PROFESSIONAL ENGINEERS  
 CERTIFICATE OF REGISTRATION # F-11852



**7** VERTICAL CROSS SECTION  
 6 Outswing shown - inswing also approved

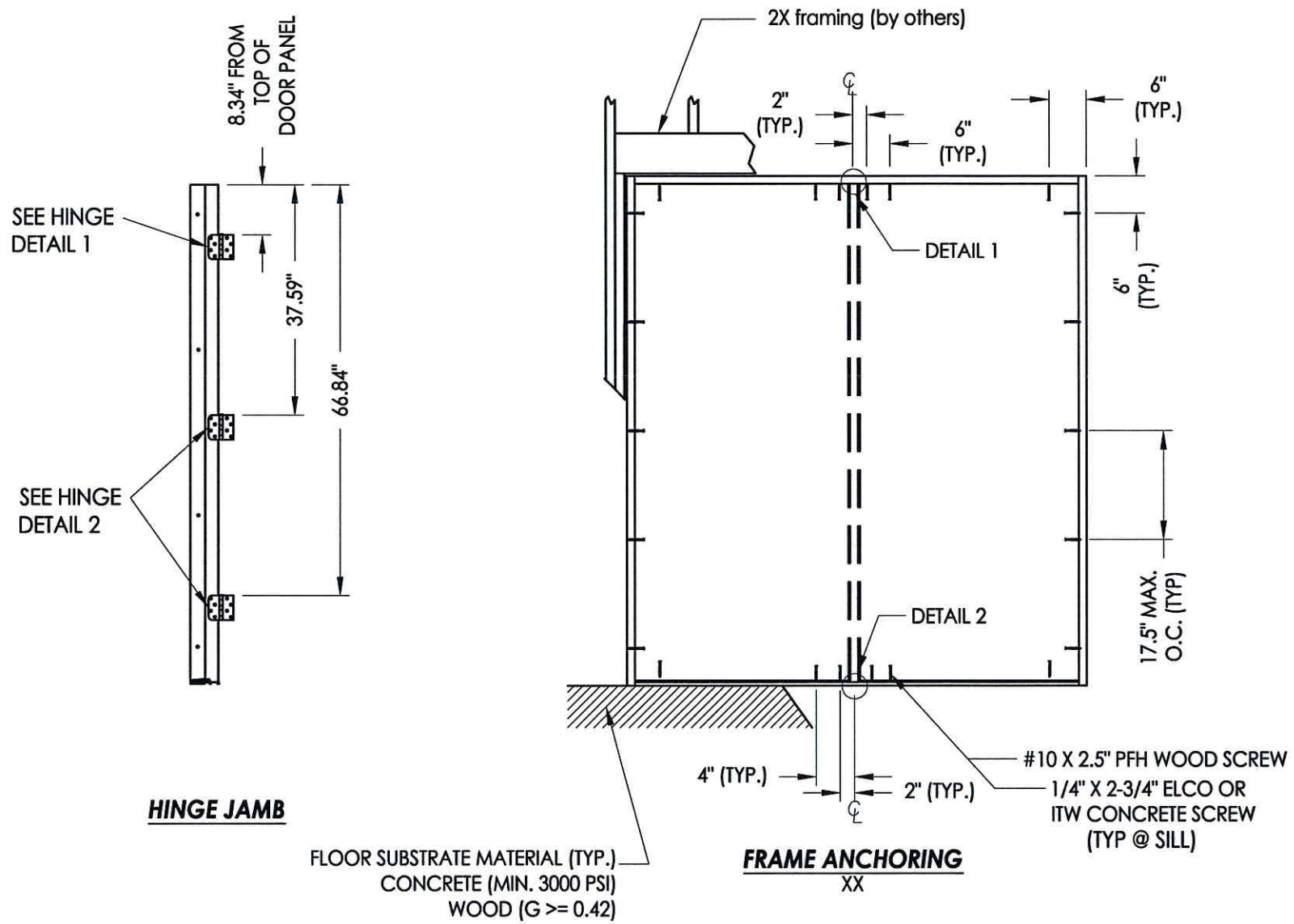


**2** VERTICAL CROSS SECTION  
 7 Outswing shown



**3** VERTICAL CROSS SECTION  
 7 Inswing configuration

ENDURA					
PRODUCT:			PART OR ASSEMBLY:	VERTICAL CROSS SECTIONS	
	NO.	DATE	BY	REVISIONS	
DATE: 9/06/12			SCALE: N.T.S.		
DWG. BY: JK			CHK. BY: LFS		
DRAWING NO.: TX-4216					
SHEET 7 OF 8					



**HINGE JAMB**

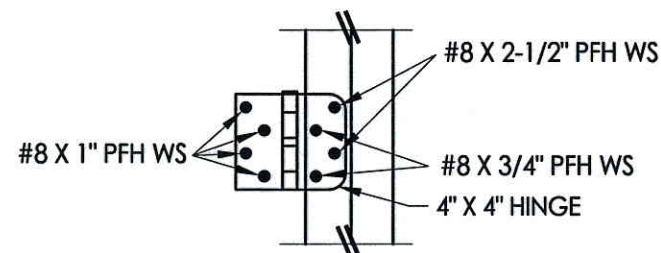
FLOOR SUBSTRATE MATERIAL (TYP.)  
 CONCRETE (MIN. 3000 PSI)  
 WOOD (G >= 0.42)

**FRAME ANCHORING**  
 XX

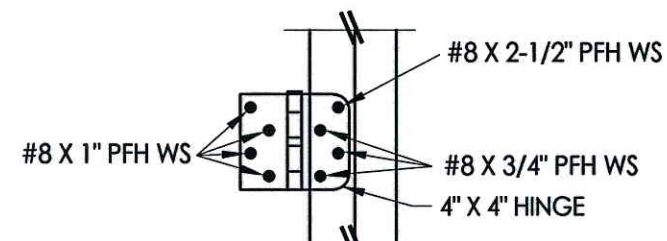
**CONCRETE ANCHOR NOTES:**

- Concrete anchor locations at the corners may be adjusted to maintain the min. edge distance to mortar joints.
- Concrete anchor locations noted as "MAX. ON CENTER" must be adjusted to maintain the min. edge distance to mortar joints, additional concrete anchors may be required to ensure the "MAX. ON CENTER" dimension are not exceeded.
- Concrete anchor table:

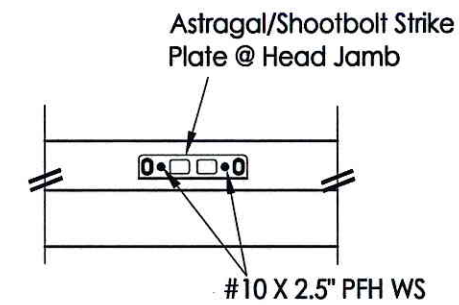
ANCHOR TYPE	ANCHOR SIZE	MIN. EMBEDMENT	MIN. CLEARANCE TO MASONRY EDGE	MIN. CLEARANCE TO ADJACENT ANCHOR
ITW TAPCON®	1/4"	1-3/4"	2-1/2"	3"
ELCO ULTRACON®	1/4"	1-3/4"	1"	3"



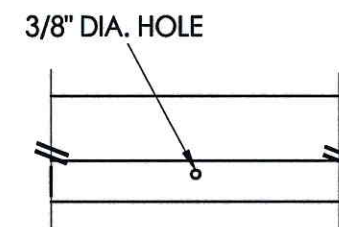
**HINGE DETAIL 1**



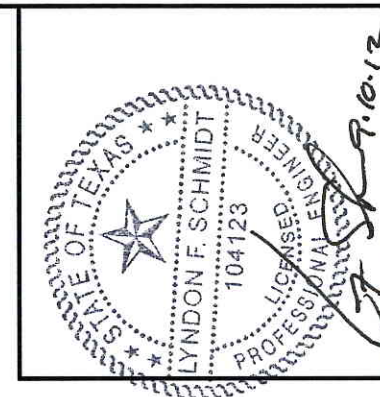
**HINGE DETAIL 2**



**DETAIL 1**



**DETAIL 2**



Documents Prepared By: Lyndon F. Schmidt, P.E.  
 TEXAS P.E. #104123

**RW** BUILDING CONSULTANTS, INC.

P.O. Box 230 Vairico FL 33595  
 Phone No.: 813.659.9197

TEXAS BOARD OF PROFESSIONAL ENGINEERS  
 CERTIFICATE OF REGISTRATION # F-11852

PRODUCT:	ENDURA
PART OR ASSEMBLY:	FRAME ANCHORING

NO.	DATE	BY	REVISIONS

DATE:	9/06/12
SCALE:	N.T.S.
DWG. BY:	JK
CHK. BY:	LFS
DRAWING NO.:	TX-4216
SHEET	8 OF 8