



AMERICA'S DOORMAKER  
631 N. FIRST ST. WEST BRANCH, MI 48661

# TIMBERLINE DELUXE OPAQUE FIBERGLASS SINGLE DOOR IN SWING / OUT SWING "IMPACT"

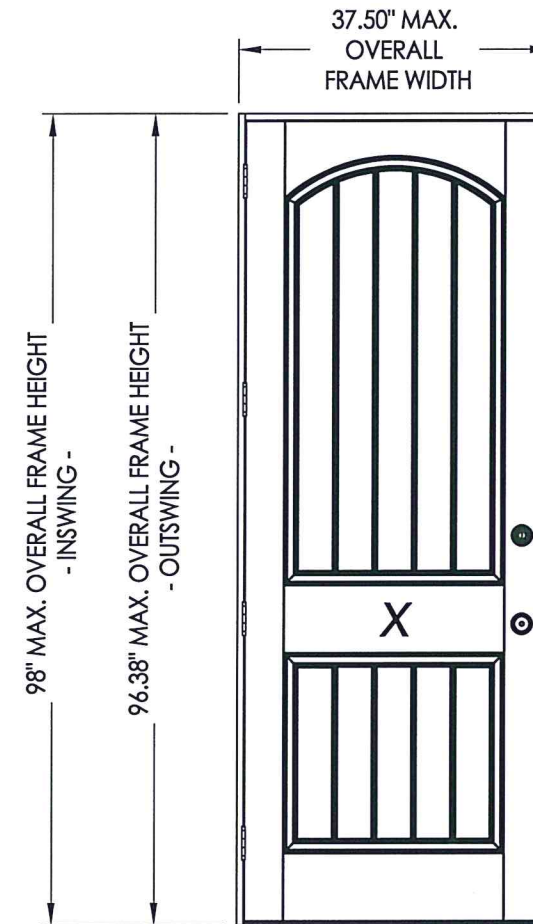
### EVALUATED FOR USE IN THE STATE OF TEXAS

The Fiberglass Door system described herein complies with the 2018 International Residential Code (IRC), Sections R301 & R609 and the 2018 International Building Code (IBC), Sections 1404.13, 1609, 1709.5, 2403 and 2404 subject to the following conditions:

1. Anchors shall be as listed and spaced as shown in the details. Anchor embedment to base material shall be beyond wall dressing or stucco.
2. When used in areas requiring wind-borne debris protection, the opaque door does not require impact protection and meets missile level "D" as defined in ASTM E 1996.
3. Allowable design pressure requirements must be equal to or less than the design pressure rating shown in the design pressure chart, sheet 1 of this drawing.
4. Conditions not covered by this drawing are subject to further engineering analysis.

TABLE OF CONTENTS

SHEET#	DESCRIPTION
1	Typical elevations, design pressures & general notes
2	Door panel details
3	Horizontal cross sections
4	Vertical cross sections
5	Frame anchoring
6	Bill of materials and components



CONFIGURATION	MAX. FRAME DIMENSION	DESIGN PRESSURE (PSF) INSWING		DESIGN PRESSURE (PSF) OUTSWING	
		POSITIVE	NEGATIVE	POSITIVE	NEGATIVE
X	37.50" x 98.00"	+65.0	-65.0	+70.0	-70.0

NOTE: See Sheet 2 for hardware design pressure limitations.



Documents Prepared By: Lyndon F. Schmidt, P.E.  
TEXAS P.E. #104123

RW BUILDING CONSULTANTS, INC.  
P.O. Box 230 Valrico FL 33595  
Phone No.: 813.659.9197

TEXAS BOARD OF PROFESSIONAL ENGINEERS  
CERTIFICATE OF REGISTRATION # F-11852

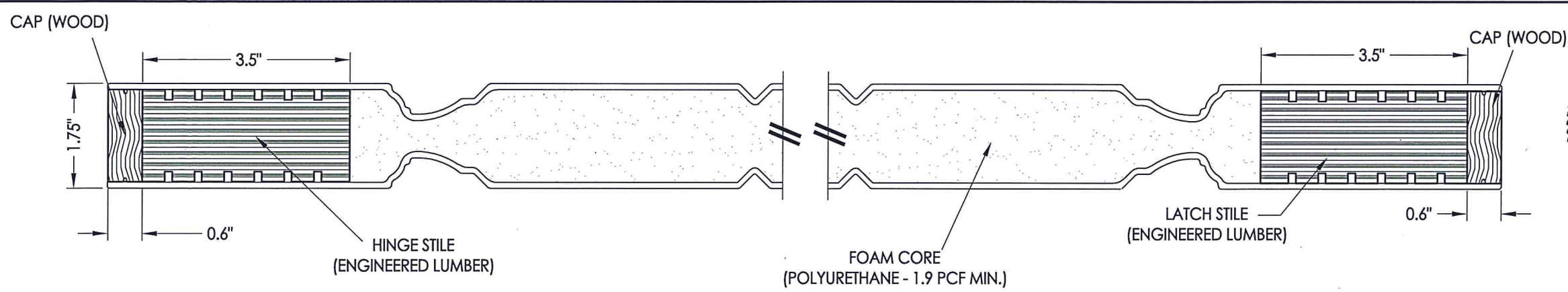
PRODUCT: TAYLOR FIBERGLASS DOOR  
PART OR ASSEMBLY: TYPICAL ELEVATION, DESIGN PRESSURES & GENERAL NOTES

NO.	DATE	DESCRIPTION	BY
1	7/06/20	UPDATE TO 2018 IBC/IRC CODE	LFS

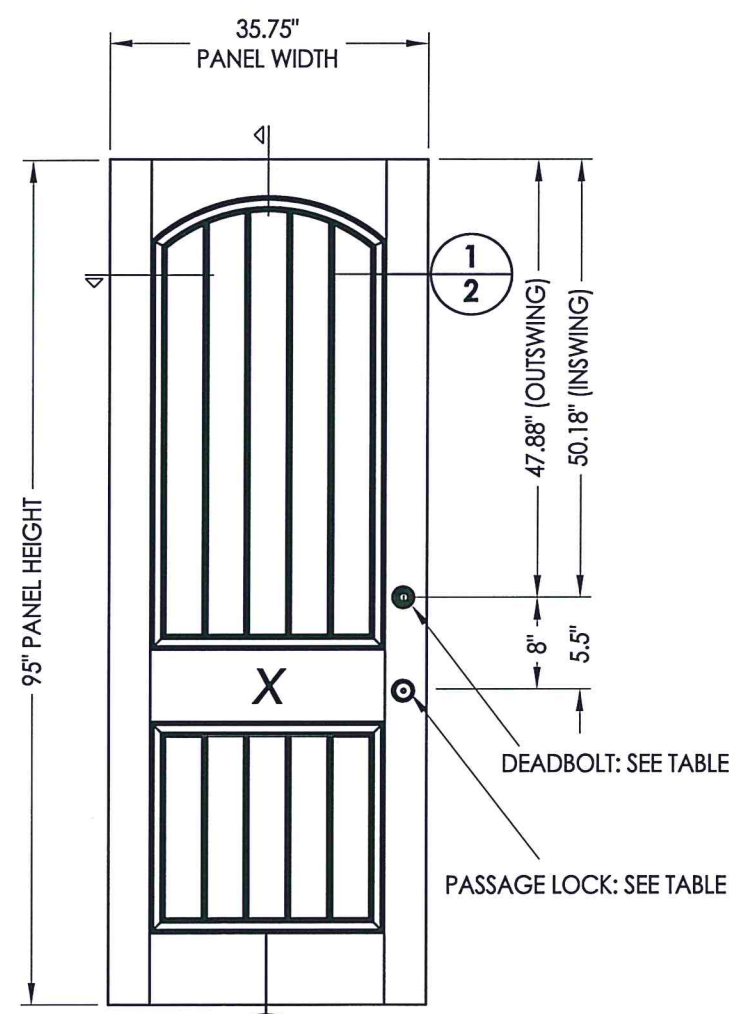
DATE: 11/26/14  
SCALE: N.T.S.  
DWG. BY: JK  
CHK. BY: LFS  
DRAWING NO.: TX-4513  
SHEET 1 OF 6



R:\Clients\Taylor Permanent\B - Texas Dept of Ins\TDI - DR 606 6'8 & 8'0 Sgl Opaque FG Doors Impact\Drawings\2018 IBC Update\TX-4512-13.dwg, 2 (2)

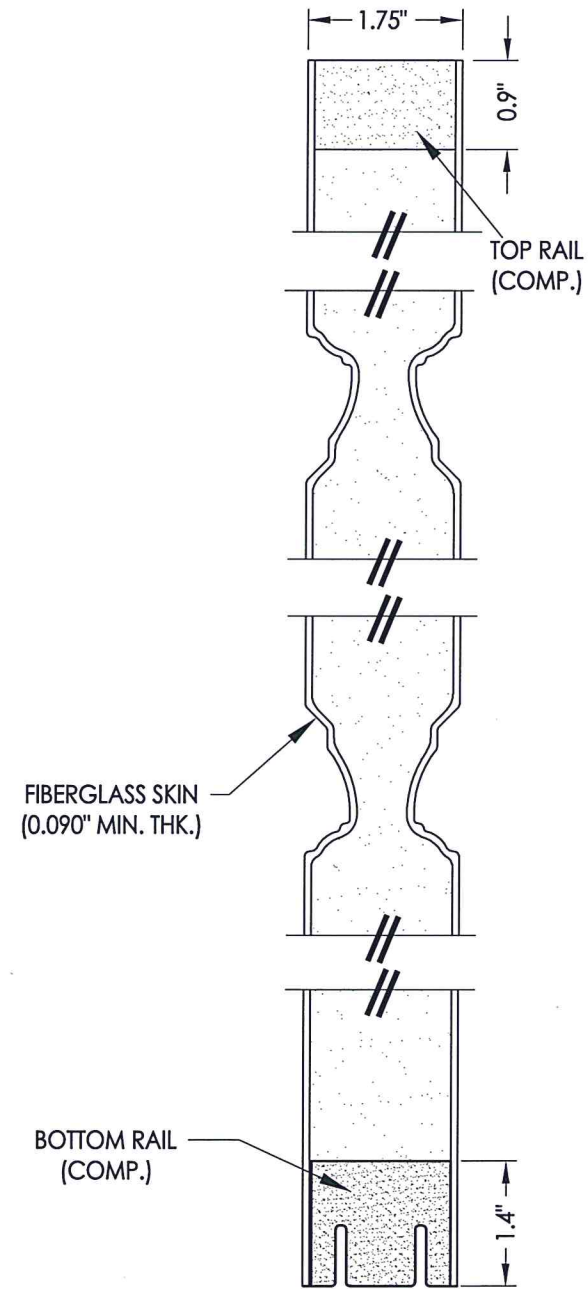


1 HORIZONTAL CROSS SECTION  
2

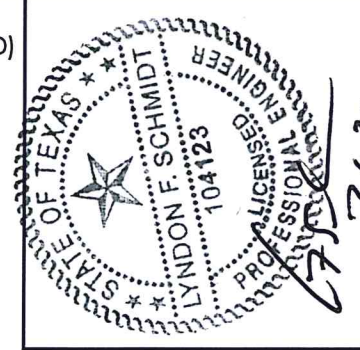


40 DOOR PANEL  
Taylor Door  
w/ Mastergrain Fiberglass skins

HARDWARE TABLE			
MANUFACTURER	MODEL		MAX. DESIGN PRESSURE
KWIKSET	KNOB:	KWIKSET SIGNATURE SERIES	70 PSF
	DEADBOLT:	KWIKSET SIGNATURE SERIES (980)	
SCHLAGE	KNOB:	"F" SERIES	65 PSF
	DEADBOLT:	"B" SERIES	

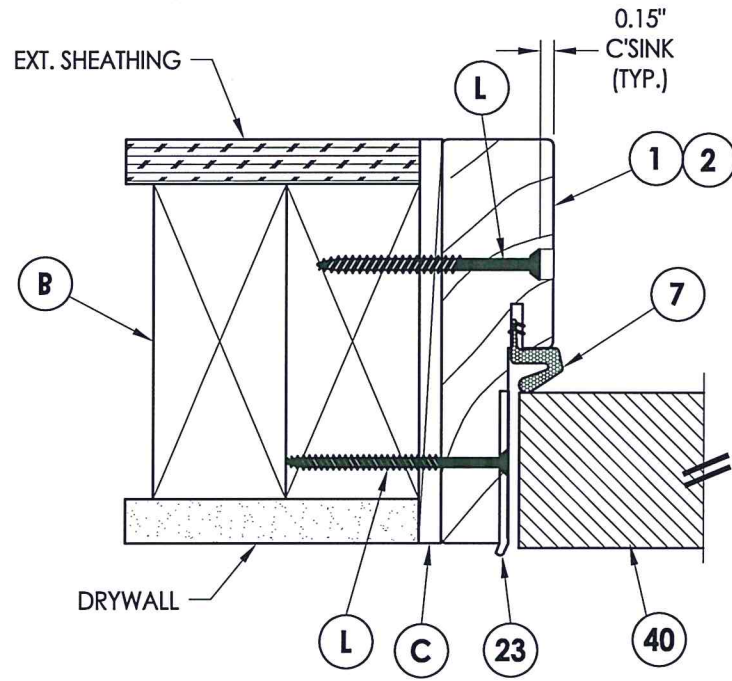
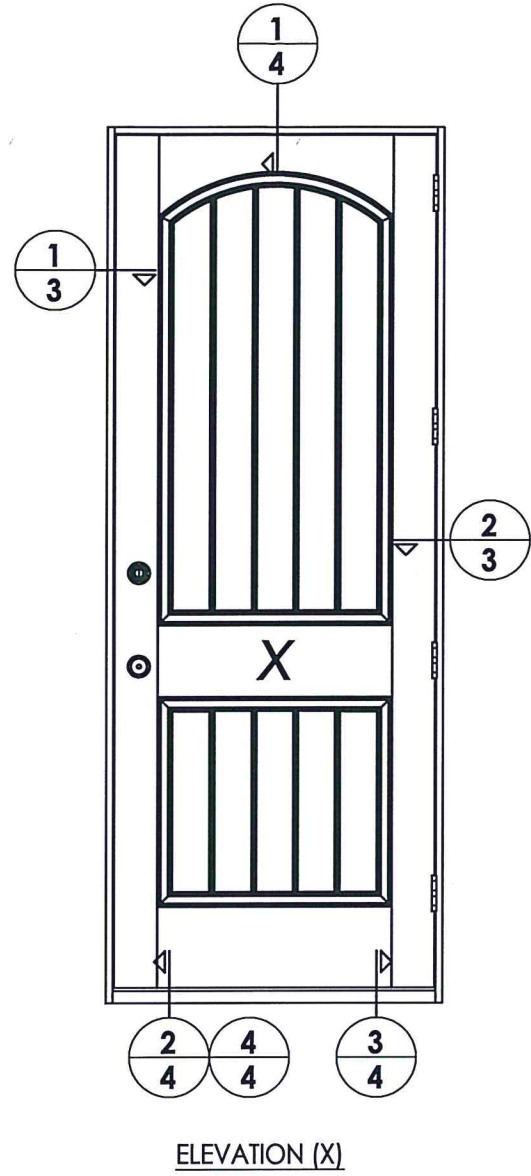


2 VERTICAL CROSS SECTION  
2



Documents Prepared By: Lyndon F. Schmidt, P.E.  
TEXAS P.E. #104123  
7-6-20  
R.W. BUILDING CONSULTANTS, INC.  
P.O. Box 230 Valrico FL, 33595  
Phone No.: 813.659.9197  
TEXAS BOARD OF PROFESSIONAL ENGINEERS  
CERTIFICATE OF REGISTRATION # F-11852

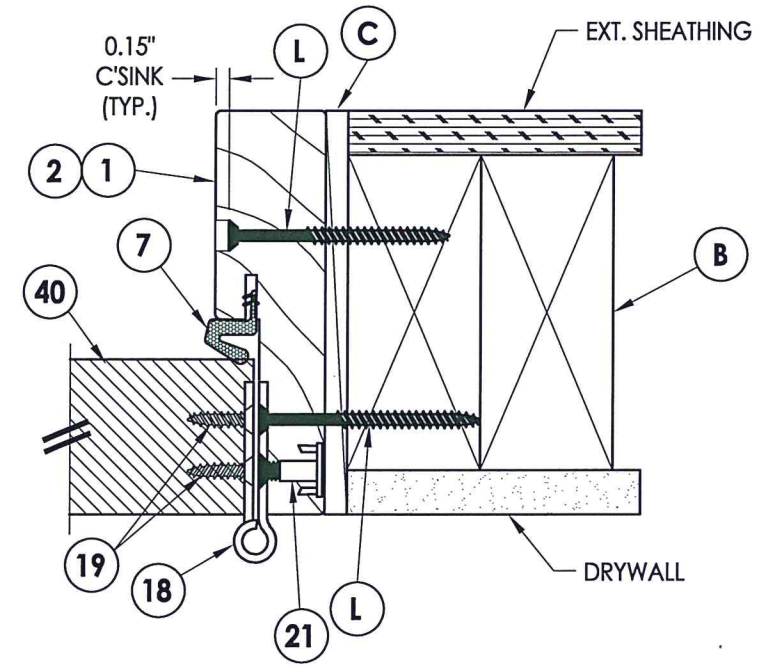
PRODUCT:	TAYLOR FIBERGLASS DOOR
PART OR ASSEMBLY:	DOOR PANEL DETAILS
DATE:	11/26/14
SCALE:	N.T.S.
DWG. BY:	JK
CHK. BY:	LFS
DRAWING NO.:	TX-4513
SHEET	2 OF 6



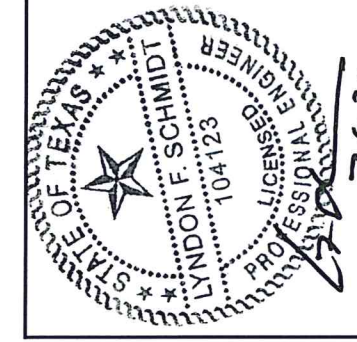
**1 HORIZONTAL CROSS SECTION**  
**3** Inswing shown - outswing also approved

EXTERIOR

INTERIOR



**2 HORIZONTAL CROSS SECTION**  
**3** Inswing shown - outswing also approved



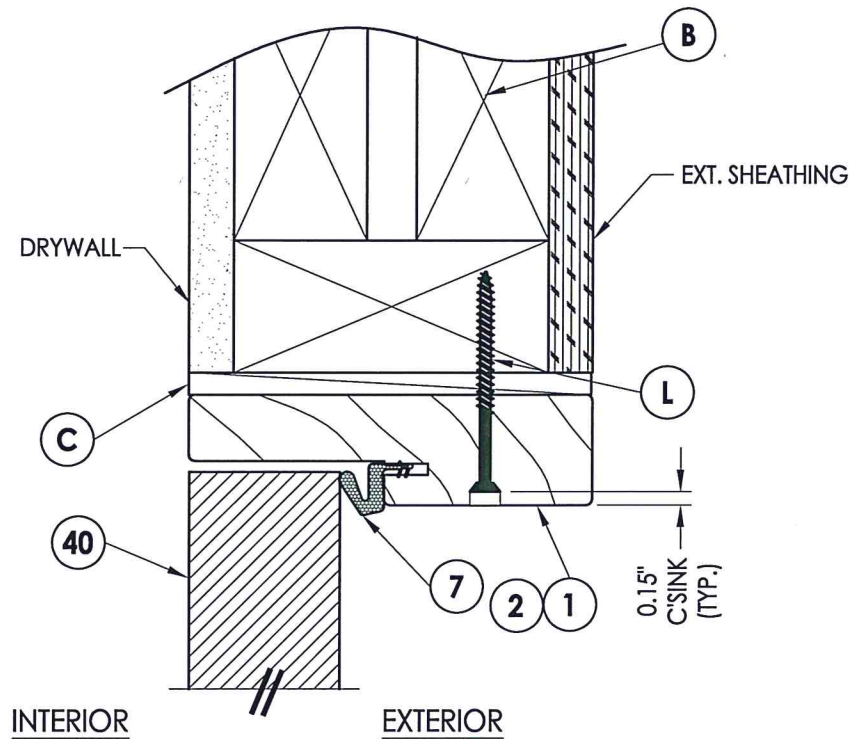
Documents Prepared By: Lyndon F. Schmidt, P.E.  
 TEXAS P.E. #104123

**RW** BUILDING CONSULTANTS, INC.  
 P.O. Box 230 Valrico FL 33595  
 Phone No.: 813.659.9197

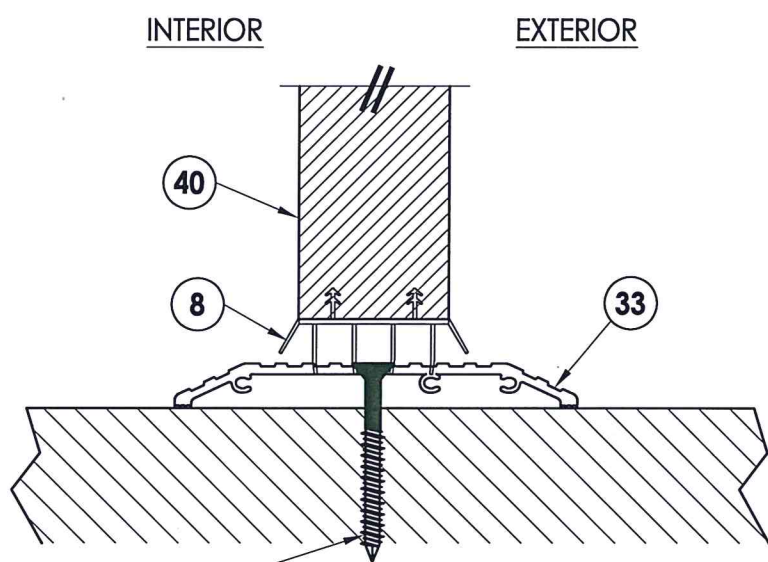
TEXAS BOARD OF PROFESSIONAL ENGINEERS  
 CERTIFICATE OF REGISTRATION # F-11852

PRODUCT:	TAYLOR FIBERGLASS DOOR	
PART OR ASSEMBLY:	HORIZONTAL CROSS SECTIONS	
NO.	DATE	BY
1	7/06/20	LFS
UPDATE TO 2018 IBC/IRC CODE		
REVISIONS		
DATE:	11/26/14	
SCALE:	N.T.S.	
DWG. BY:	JK	
CHK. BY:	LFS	
DRAWING NO.:	TX-4513	
SHEET	3	OF 6

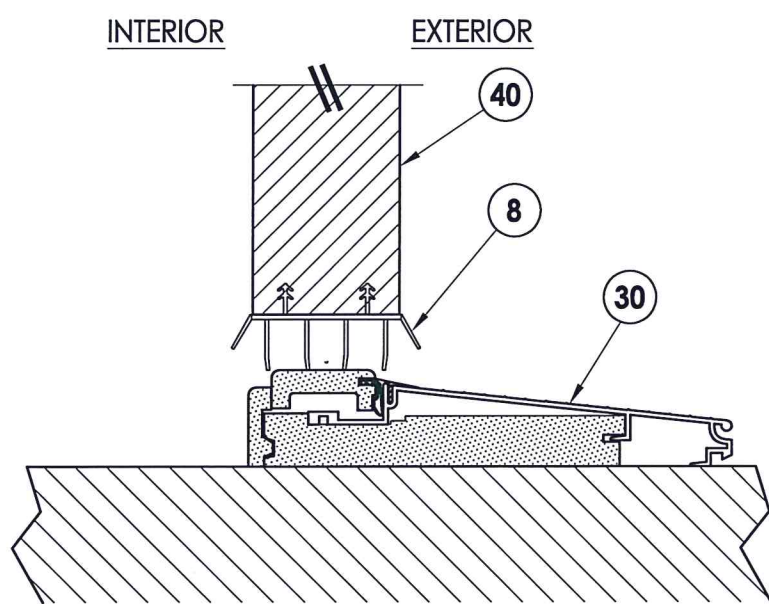




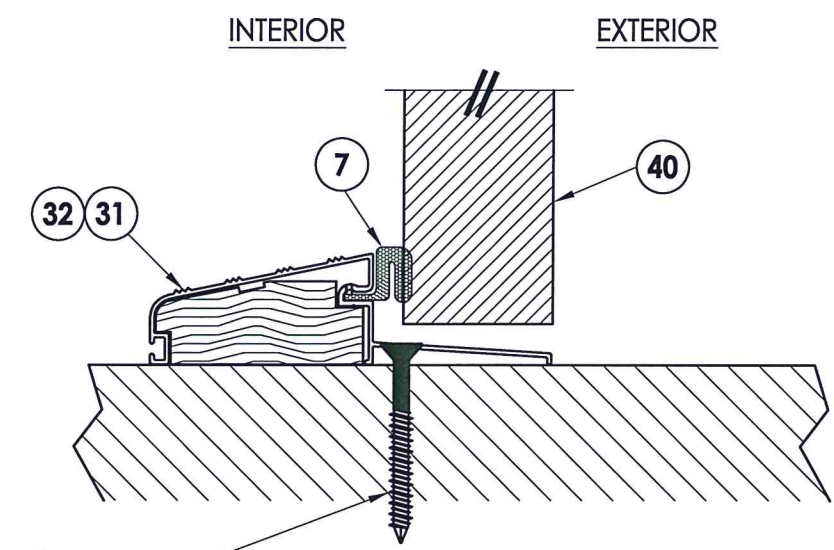
**1 VERTICAL CROSS SECTION**  
**4** Inswing shown - outswing also approved



**J** WOOD  
**P** CONCRETE  
**4 VERTICAL CROSS SECTION**  
**4** Shown w/ ADA threshold



**2 VERTICAL CROSS SECTION**  
**4** Inswing configuration



**J** WOOD  
**P** CONCRETE  
**3 VERTICAL CROSS SECTION**  
**4** Outswing configuration



Documents Prepared By: Lyndon F. Schmidt, P.E.  
 TEXAS P.E. #104123

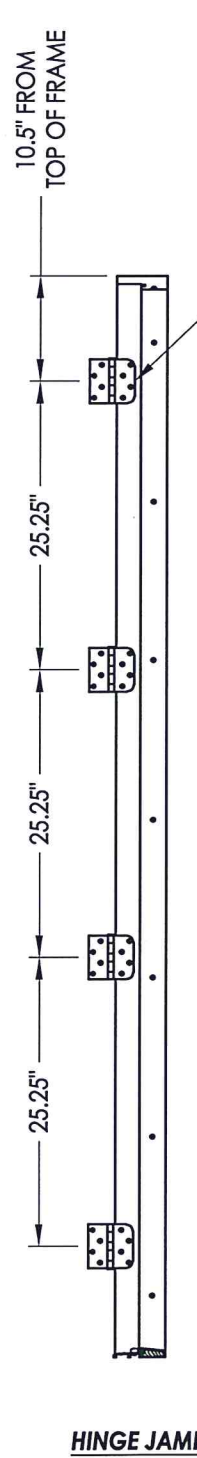
**RW** BUILDING CONSULTANTS, INC.  
 P.O. Box 230 Vairico FL, 33595  
 Phone No.: 813.659.9197

TEXAS BOARD OF PROFESSIONAL ENGINEERS  
 CERTIFICATE OF REGISTRATION # F-11852

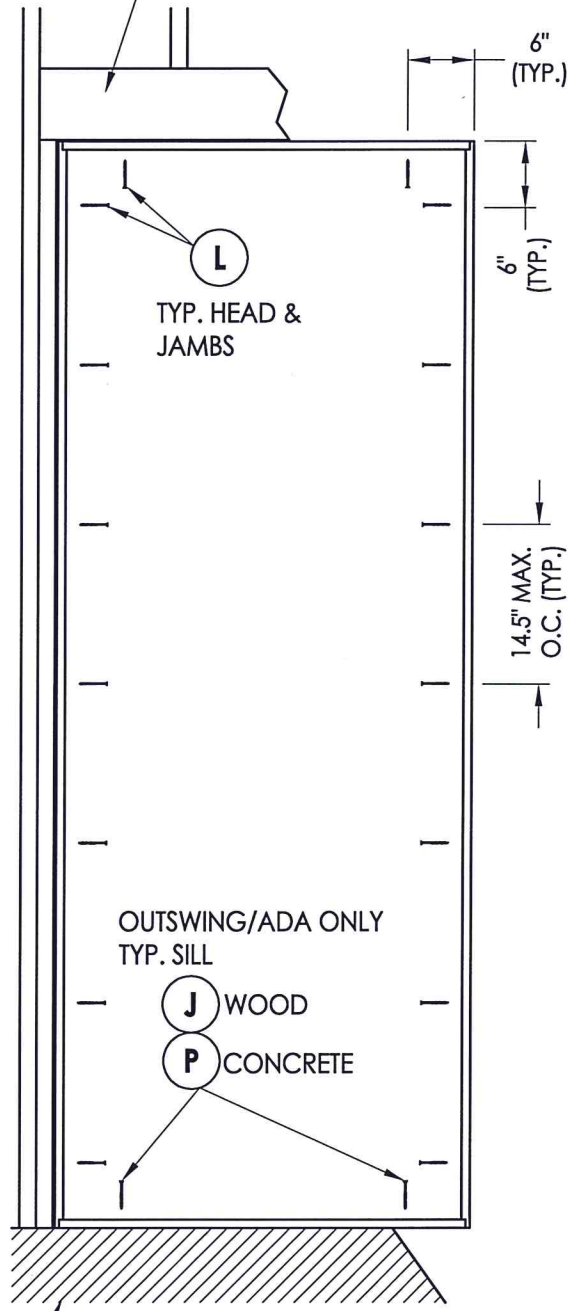
PRODUCT: TAYLOR FIBERGLASS DOOR  
 PART OR ASSEMBLY: VERTICAL CROSS SECTIONS

NO.	DATE	DESCRIPTION	BY
1	7/06/20	UPDATE TO 2018 IBC/IRC CODE	LFS

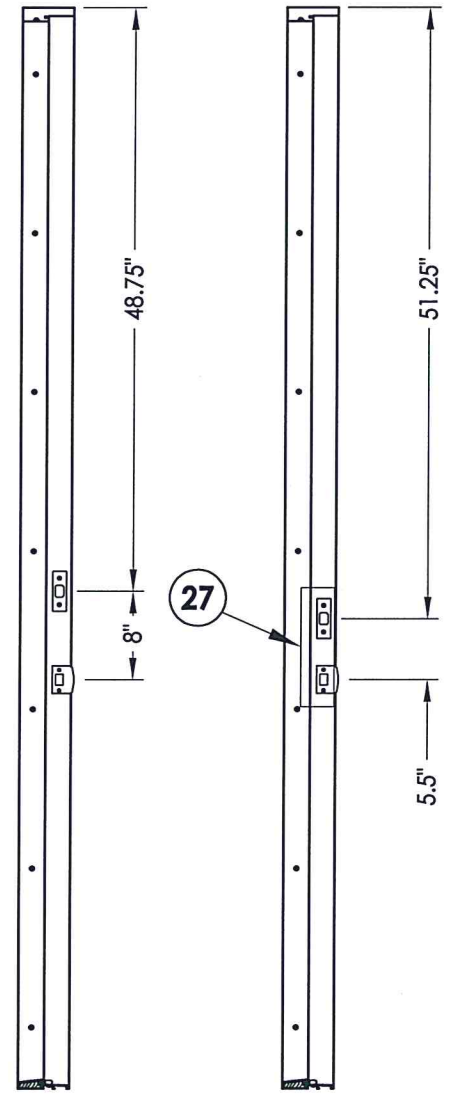
DATE: 11/26/14  
 SCALE: N.T.S.  
 DWG. BY: JK  
 CHK. BY: LFS  
 DRAWING NO.: TX-4513  
 SHEET 4 OF 6



2X FRAMING TO BE DESIGNED BY THE ENGINEER OR ARCHITECT OF RECORD BASED ON WIND LOADS AND THE CLADDING BEING USED (TYP).

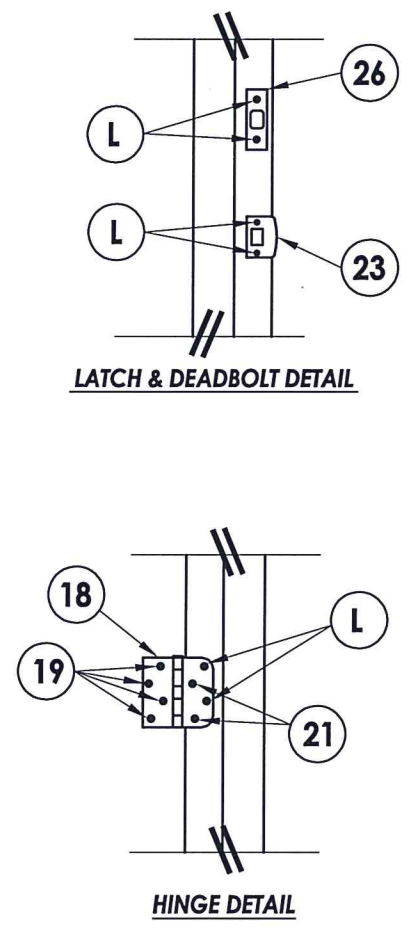


FLOOR SUBSTRATE MATERIAL  
CONCRETE (MIN. 3000 PSI)  
WOOD (G >= 0.42)



STRIKE JAMB  
Outswing

STRIKE JAMB  
Inswing



HINGE DETAIL

LATCH & DEADBOLT DETAIL



Documents Prepared By: Lyndon F. Schmidt, P.E.  
TEXAS P.E. #104123

**RW** BUILDING CONSULTANTS, INC.  
P.O. Box 230 Valrico FL 33595  
Phone No.: 813.659.9197

TEXAS BOARD OF PROFESSIONAL ENGINEERS  
CERTIFICATE OF REGISTRATION # F-11852

PRODUCT:		TAYLOR FIBERGLASS DOOR	
PART OR ASSEMBLY:		FRAME ANCHORING	
NO.	DATE	DESCRIPTION	BY
1	7/06/20	UPDATE TO 2018 IBC/IRC CODE	LFS
			REVISIONS
DATE: 11/26/14			
SCALE: N.T.S.			
DWG. BY: JK			
CHK. BY: LFS			
DRAWING NO.: TX-4513			
SHEET 5 OF 6			



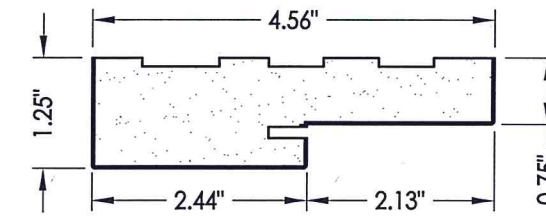
R:\Clients\Taylor Permanent\B - Texas Dept of Ins\TDI - DR 606 6'8 & 8'0 Sgl Opaque FG Doors Impact\Drawings\2018 IBC Update\TX-4512-13.dwg, 6 (2)

BILL OF MATERIALS		
ITEM #	DESCRIPTION	MATERIAL
B	2X FRAMING (G >= 0.42)	WOOD
C	1/4" MAX. SHIM SPACE	-
J	#10 X 3 PFH WOOD SCREW	STEEL
L	#10 X 2-1/2" PFH WOOD SCREW	
P	1/4" PFH ELCO OR ITW CONCRETE SCREW (1-3/4" MIN. EMBEDMENT)	STEEL
1	JAMB - FINGERJOINT PINE	WOOD
2	JAMB - POLY FIBER	POLY FIBER
7	WEATHER STRIP (Q-LON)	FOAM
8	DOOR BOTTOM SWEEP	VINYL
18	4" X 4" HINGE	STEEL
19	#10 X 3/4" PFH WS	STEEL
21	#10 X 3/4" PFH WS (Wood Jamb) #10-24 X 5/8" M.S. w/ 1/2" STAFast INSERT P/N D102413 (Wood or Poly Fiber Jamb) #10-24 X 5/8" M.S. w/ 3/8" STAFast PRONG TEE NUT (Wood or Poly Fiber Jamb)	STEEL
23	LATCH STRIKE PLATE	STEEL
25	#8 X 2-1/2" PFH WOOD SCREW	STEEL
26	DEADBOLT STRIKE PLATE	STEEL
27	REINFORCEMENT PLATE	STEEL
30	INSWING THRESHOLD	ALUM/COMP
31	OUTSWING THRESHOLD	ALUM/WOOD
32	OUTSWING THRESHOLD	ALUM/WOOD
33	ADA THRESHOLD	ALUM
40	DOOR PANEL - SEE DOOR PANEL DETAIL SHEET FOR CONSTRUCTION DETAILS	-

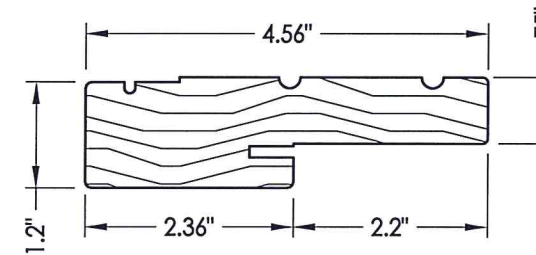
**CONCRETE ANCHOR NOTES:**

- Concrete anchor locations at the corners may be adjusted to maintain the min. edge distance to mortar joints.
- Concrete anchor locations noted as "MAX. ON CENTER" must be adjusted to maintain the min. edge distance to mortar joints, additional concrete anchors may be required to ensure the "MAX. ON CENTER" dimension are not exceeded.
- Concrete anchor table:

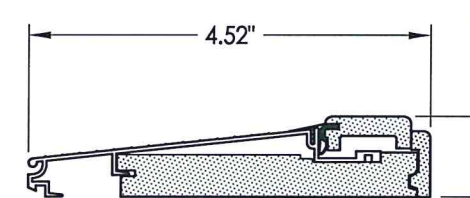
ANCHOR TYPE	ANCHOR SIZE	MIN. EMBEDMENT	MIN. CLEARANCE TO MASONRY EDGE	MIN. CLEARANCE TO ADJACENT ANCHOR
ITW TAPCON®	1/4"	1-3/4"	2-1/2"	3"
ELCO ULTRACON®	1/4"	1-3/4"	1"	3"



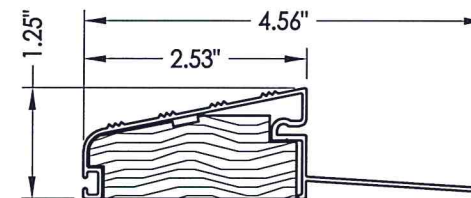
1 POLY FIBER JAMB



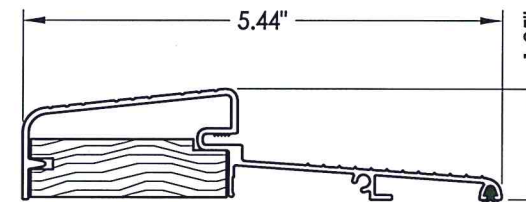
2 WOOD JAMB



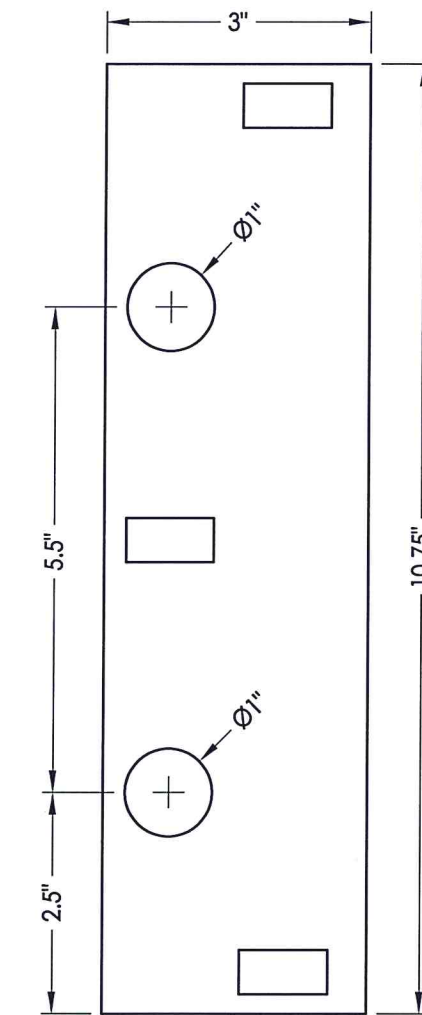
30 INSWING THRESHOLD  
By Imperial



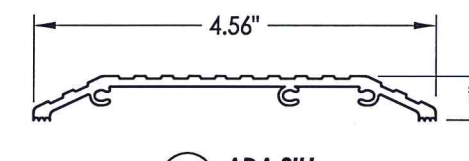
31 OUTSWING THRESHOLD  
QOSH by DLP



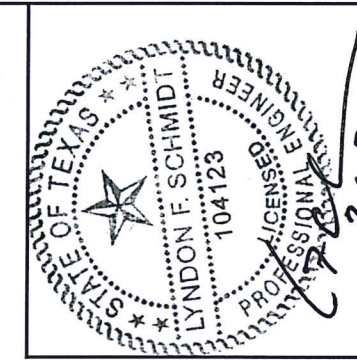
32 OUTSWING THRESHOLD  
By Combo



27 REINFORCEMENT PLATE  
16 GA.  
(Inswing only)



33 ADA SILL



Documents Prepared By: Lyndon F. Schmidt, P.E.  
TEXAS P.E. #104123

**RW** BUILDING CONSULTANTS, INC.  
P.O. Box 230 Valrico, FL 33595  
Phone No.: 813.659.9197

TEXAS BOARD OF PROFESSIONAL ENGINEERS  
CERTIFICATE OF REGISTRATION # F-11852

PRODUCT: TAYLOR  
FIBERGLASS DOOR

PART OR ASSEMBLY:  
BILL OF MATERIALS  
AND COMPONENTS

NO.	DATE	UPDATE TO 2018 IBC/IRC CODE	LFS	BY
1	7/06/20			

REVISIONS

DATE: 11/26/14  
SCALE: N.T.S.  
DWG. BY: JK  
CHK. BY: LFS  
DRAWING NO.: TX-4513  
SHEET 6 OF 6