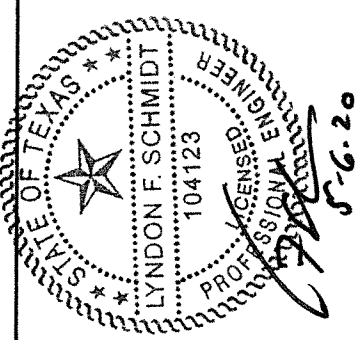
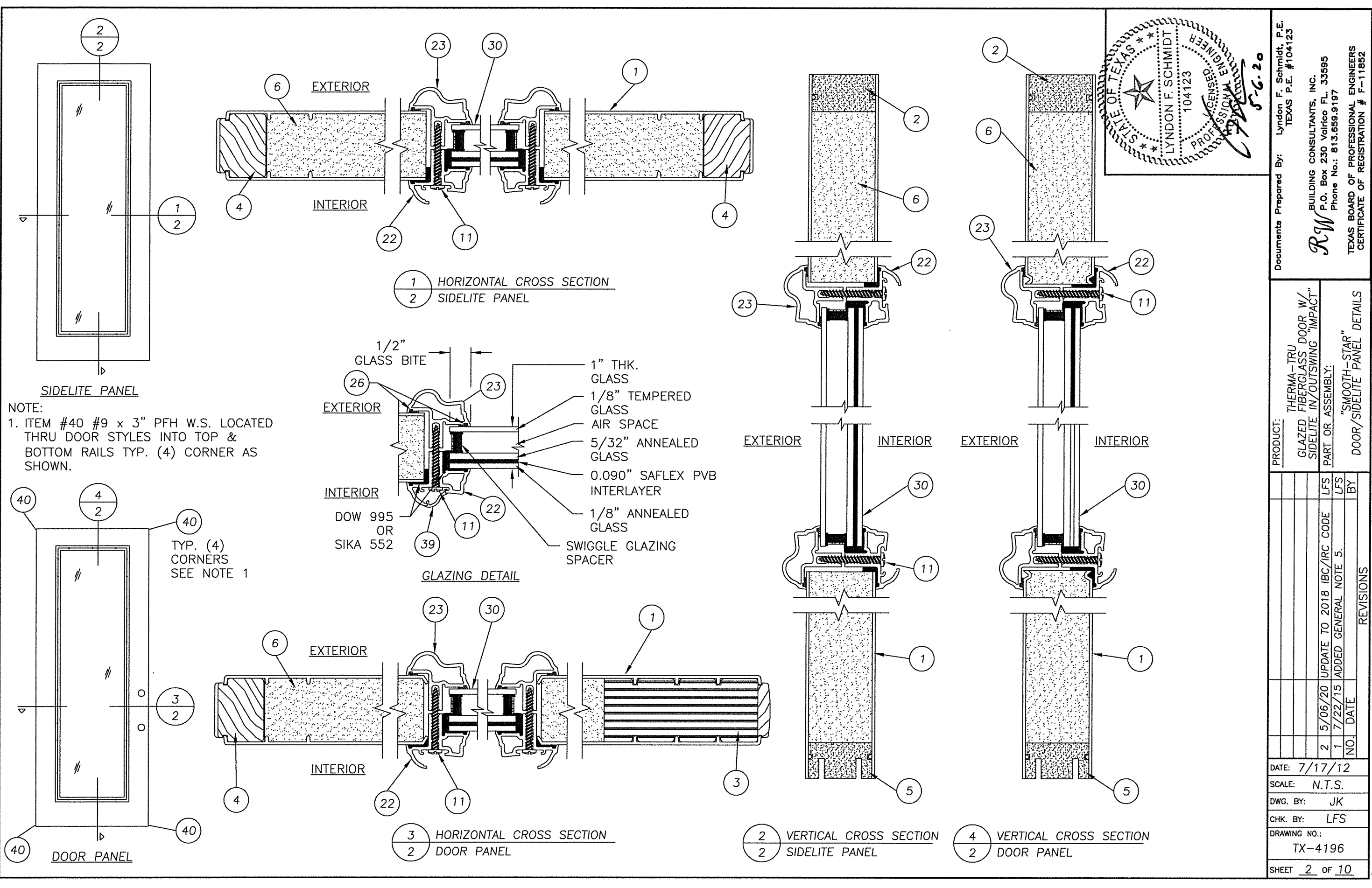




R:\Clients\Therma Tru PERMANENT\B - Texas Dept of Ins\TDI - DR 599 - 80 Glazed FG Imp IS - OS Sgls Dbls w-wo Imp SLAC - Drawings\Current\TX-4195-99.dwg, 2.6



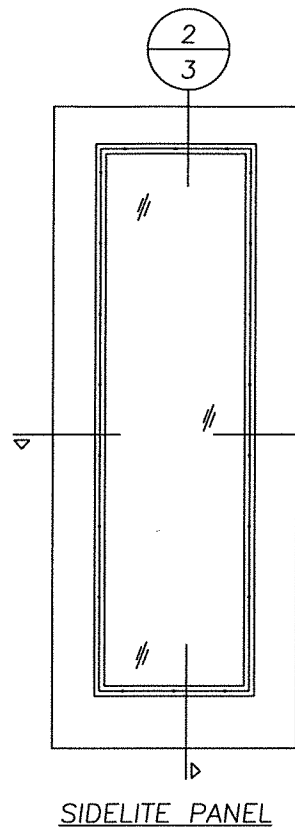
Documents Prepared By: Lyndon F. Schmidt, P.E.  
TEXAS P.E. #104123

**RW** BUILDING CONSULTANTS, INC.  
P.O. Box 230 Valrico FL 33595  
Phone No.: 813.659.9197

TEXAS BOARD OF PROFESSIONAL ENGINEERS  
CERTIFICATE OF REGISTRATION # F-11852

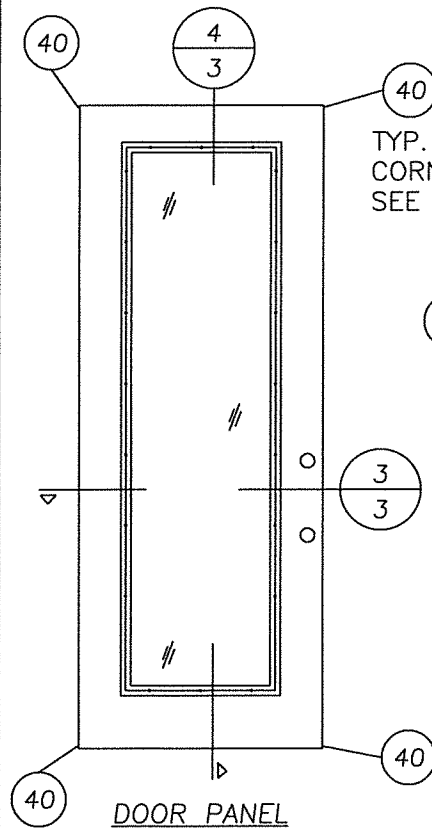
PRODUCT:	THERMA-TRU GLAZED FIBERGLASS DOOR W/ SIDELITE IN/OUTSWING "IMPACT"		
	PART OR ASSEMBLY:		
	"SMOOTH-STAR" DOOR/SIDELITE PANEL DETAILS		
	NO.	DATE	BY
	2	5/06/20	LFS
	1	7/22/15	LFS
	UPDATE TO 2018 IBC/IRC CODE ADDED GENERAL NOTE 5.		
DATE:	7/17/12		
SCALE:	N.T.S.		
DWG. BY:	JK		
CHK. BY:	LFS		
DRAWING NO.:	TX-4196		
SHEET	2	OF 10	

© 2012 R.W. BUILDING CONSULTANTS INC.

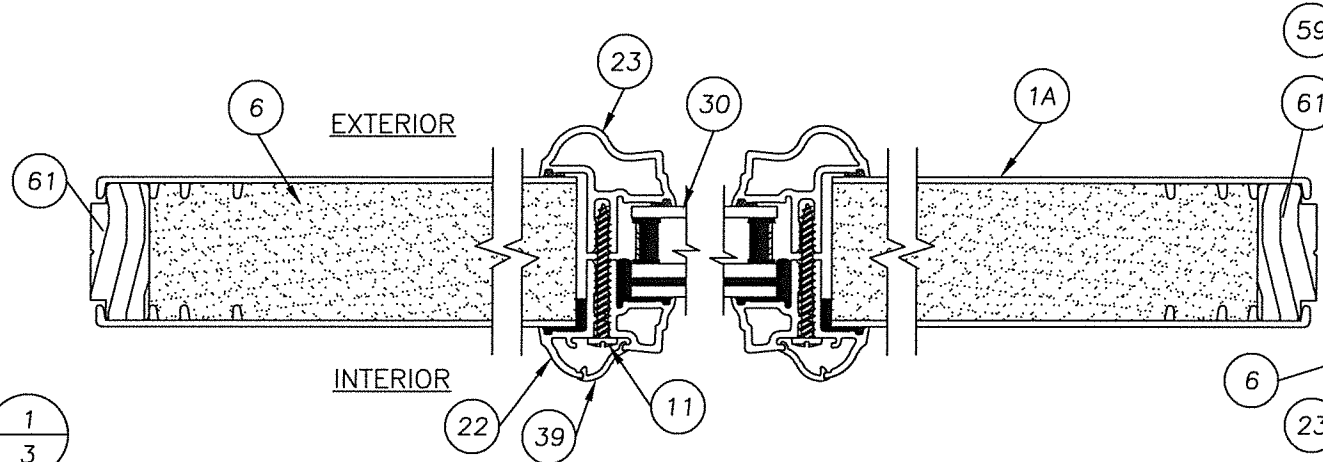


SIDELITE PANEL

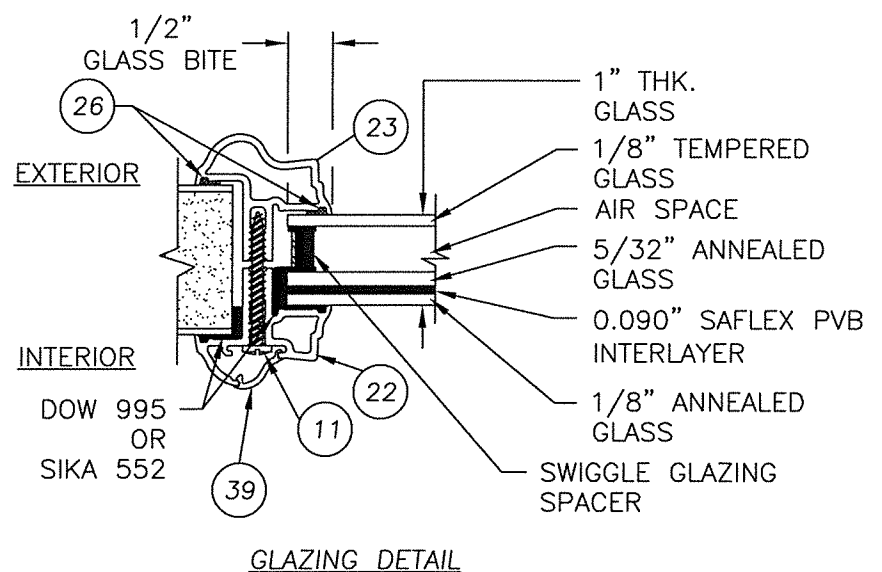
NOTE:  
1. ITEM #40 #9 x 3" PFH W.S. LOCATED THRU DOOR STYLES INTO TOP & BOTTOM RAILS TYP. (4) CORNER AS SHOWN.



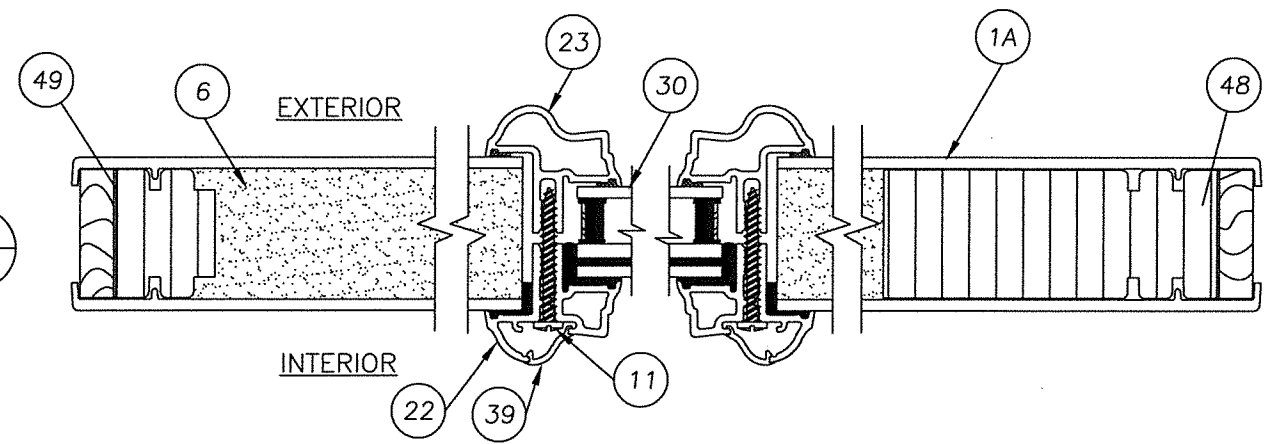
DOOR PANEL



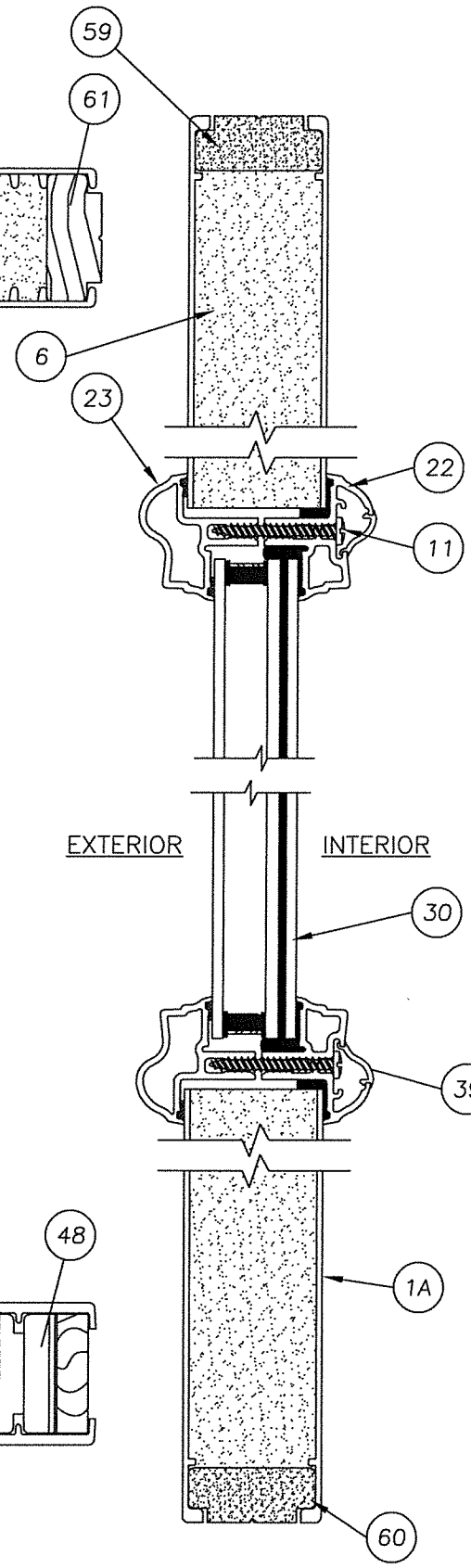
1 HORIZONTAL CROSS SECTION  
3 SIDELITE PANEL



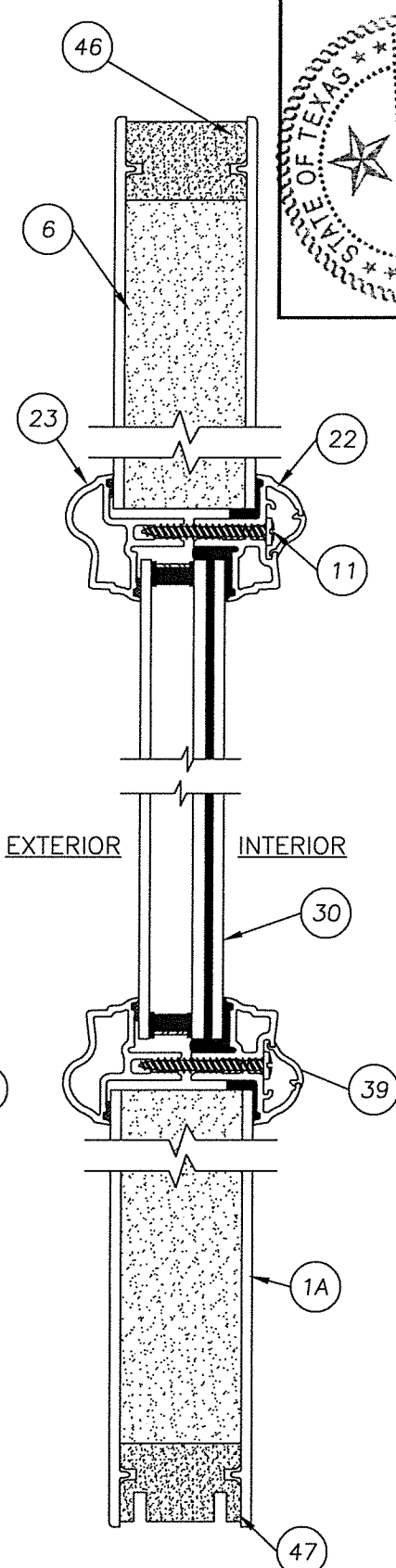
GLAZING DETAIL



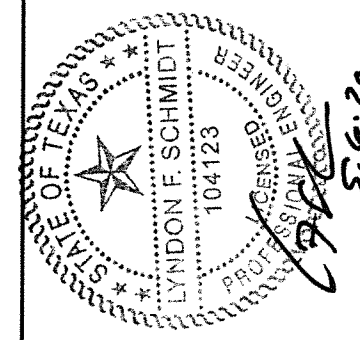
3 HORIZONTAL CROSS SECTION  
3 DOOR PANEL



2 VERTICAL CROSS SECTION  
3 SIDELITE PANEL



4 VERTICAL CROSS SECTION  
3 DOOR PANEL



Documents Prepared By: Lyndon F. Schmidt, P.E.  
TEXAS P.E. #104123

**RW** BUILDING CONSULTANTS, INC.  
P.O. Box 230 Valrico FL 33595  
Phone No.: 813.659.9197

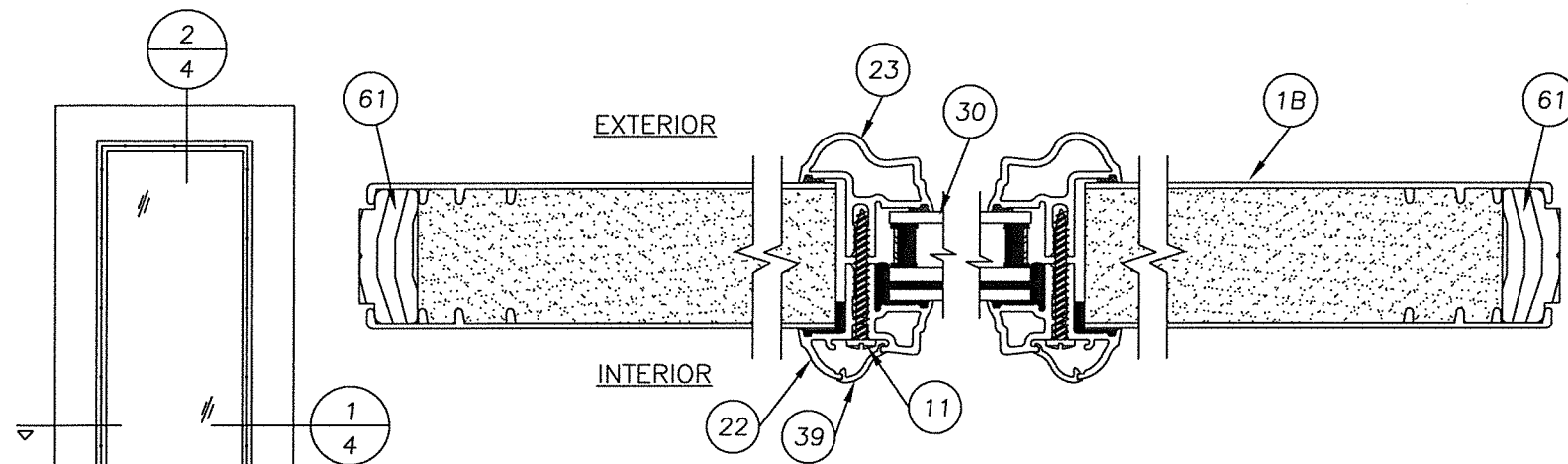
TEXAS BOARD OF PROFESSIONAL ENGINEERS  
CERTIFICATE OF REGISTRATION # F-11852

PRODUCT: THERMA-TRU GLAZED FIBERGLASS DOOR W/ SIDELITE IN/OUTSWING "IMPACT"

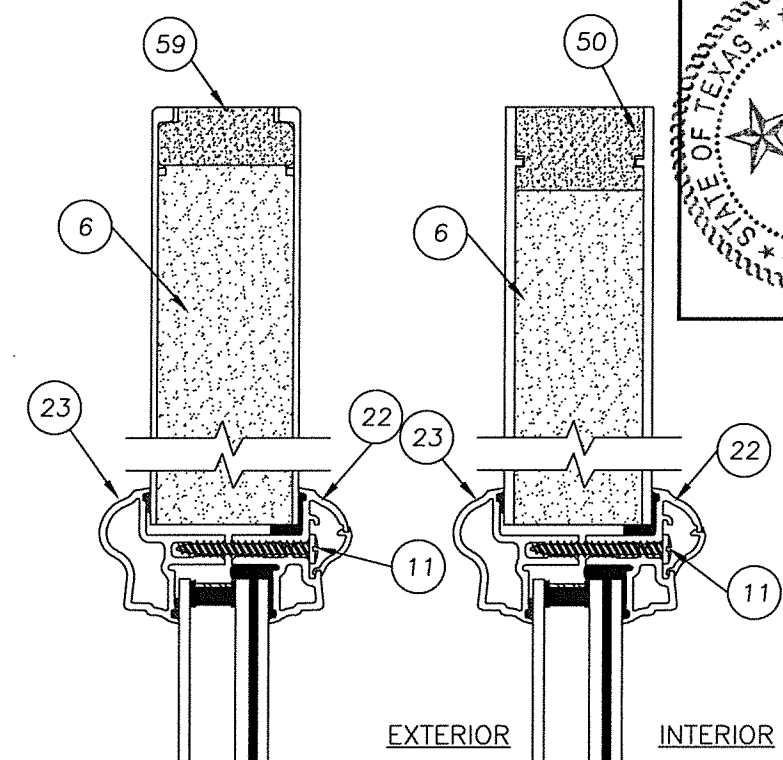
PART OR ASSEMBLY: "CLASSIC-CRAFT" & "CC RUSTIC" DOOR/SIDELITE PANEL DETAILS

NO.	DATE	REVISIONS
2	5/06/20	UPDATE TO 2018 IBC/IRC CODE
1	7/22/15	ADDED GENERAL NOTE 5.

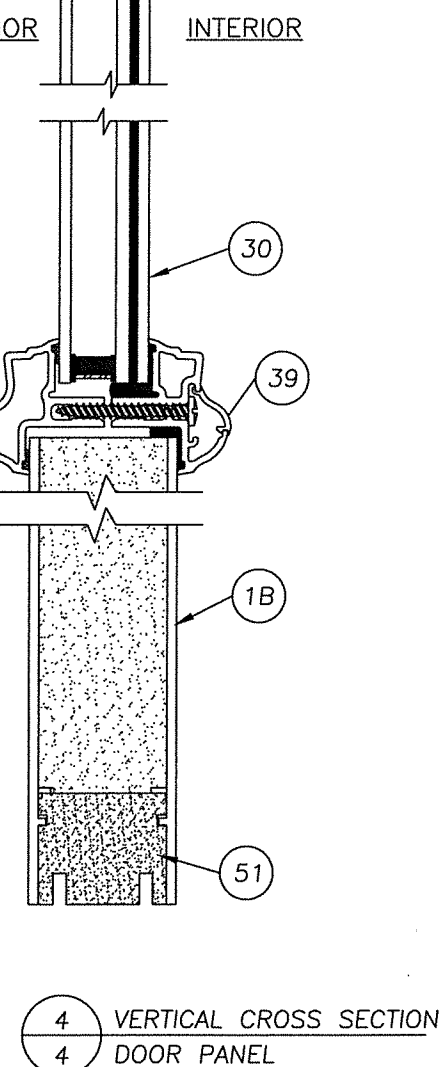
DATE: 7/17/12  
SCALE: N.T.S.  
DWG. BY: JK  
CHK. BY: LFS  
DRAWING NO.: TX-4196  
SHEET 3 OF 10



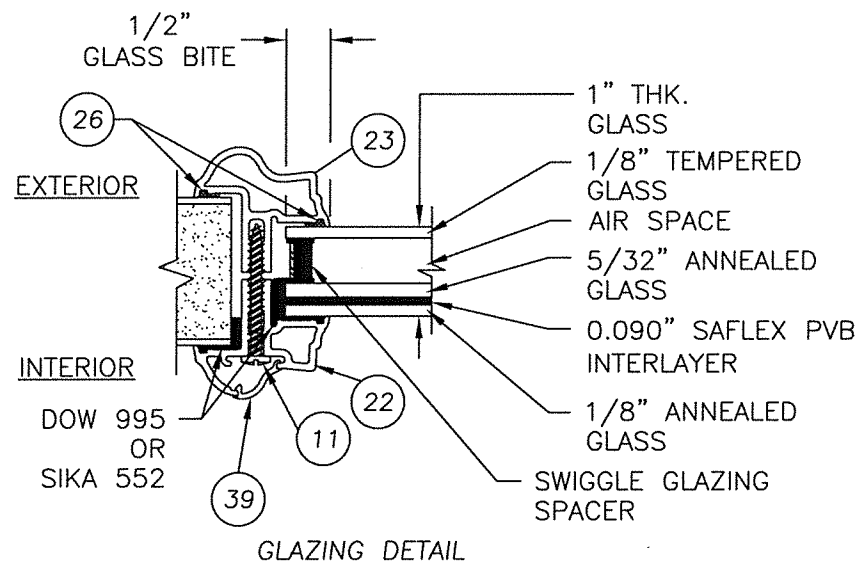
1 HORIZONTAL CROSS SECTION  
4 SIDELITE PANEL



2 VERTICAL CROSS SECTION  
4 SIDELITE PANEL

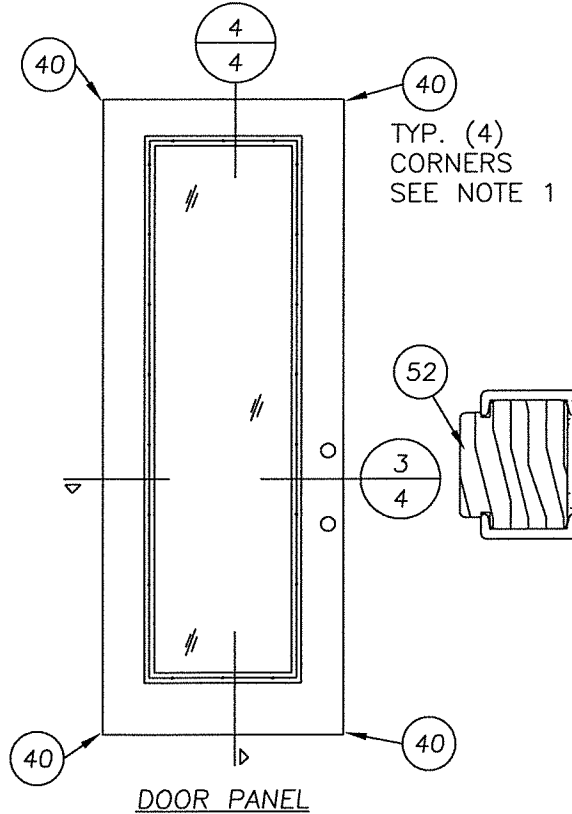


4 VERTICAL CROSS SECTION  
4 DOOR PANEL

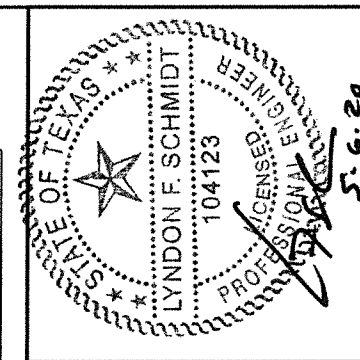


GLAZING DETAIL

NOTE:  
1. ITEM #40 #9 x 3" PFH W.S. LOCATED THRU DOOR STYLES INTO TOP & BOTTOM RAILS TYP. (4) CORNER AS SHOWN.



3 HORIZONTAL CROSS SECTION  
4 DOOR PANEL



Documents Prepared By: Lyndon F. Schmidt, P.E.  
TEXAS P.E. #104123

**RW** BUILDING CONSULTANTS, INC.  
P.O. Box 230 Veroico FL 33595  
Phone No.: 813.659.9197

TEXAS BOARD OF PROFESSIONAL ENGINEERS  
CERTIFICATE OF REGISTRATION # F-11852

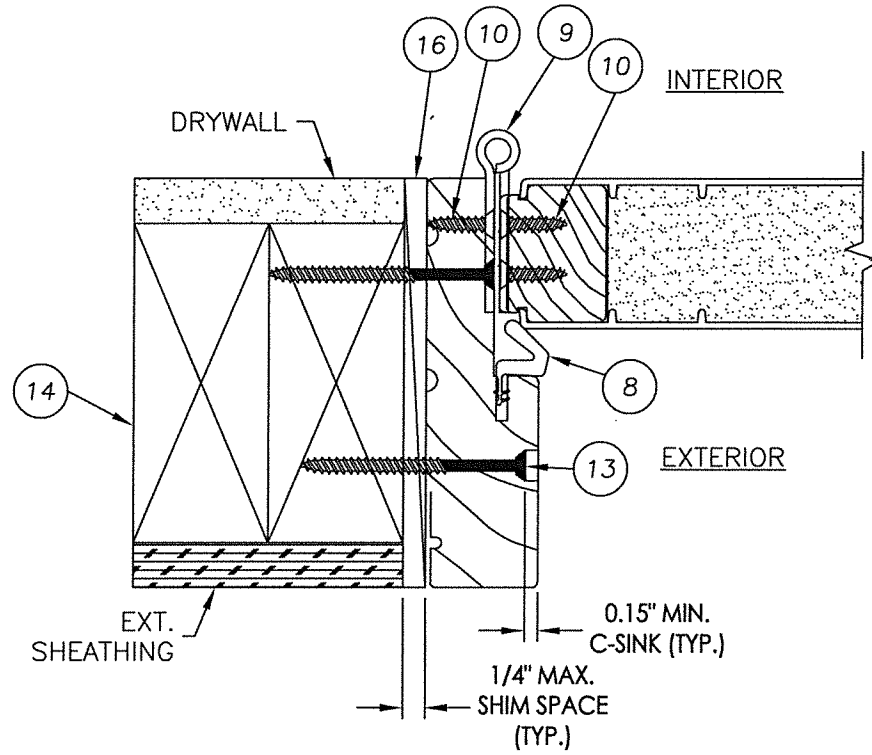
PRODUCT: THERMA-TRU GLAZED FIBERGLASS DOOR W/ SIDELITE IN/OUTSWING "IMPACT"

PART OR ASSEMBLY: "FIBER-CLASSIC" DOOR/SIDELITE PANEL DETAILS

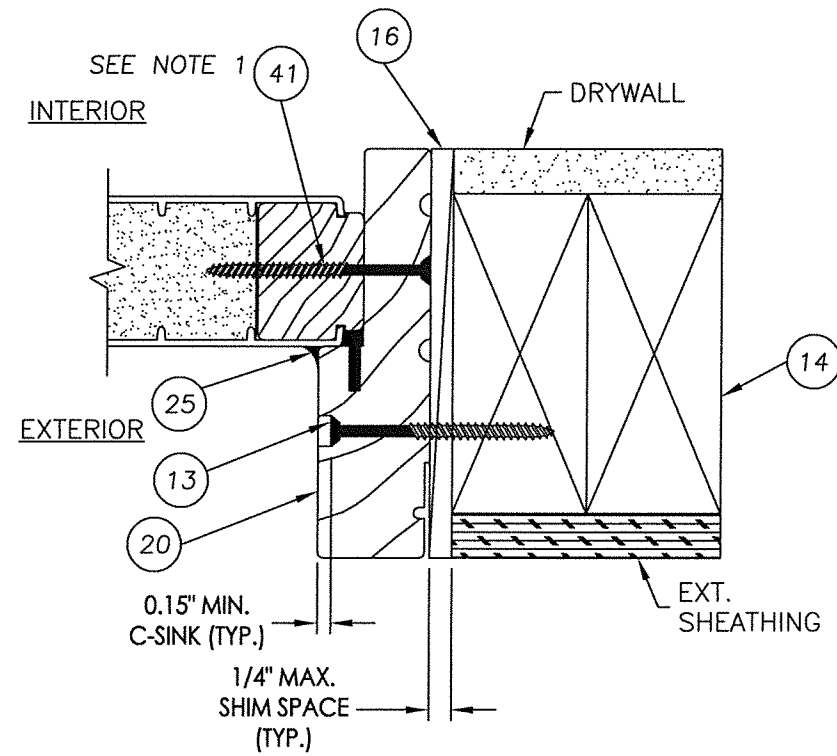
NO.	DATE	BY
2	5/06/20	LFS
1	7/22/15	LFS

DATE: 7/17/12  
SCALE: N.T.S.  
DWG. BY: JK  
CHK. BY: LFS  
DRAWING NO.: TX-4196  
SHEET 4 OF 10

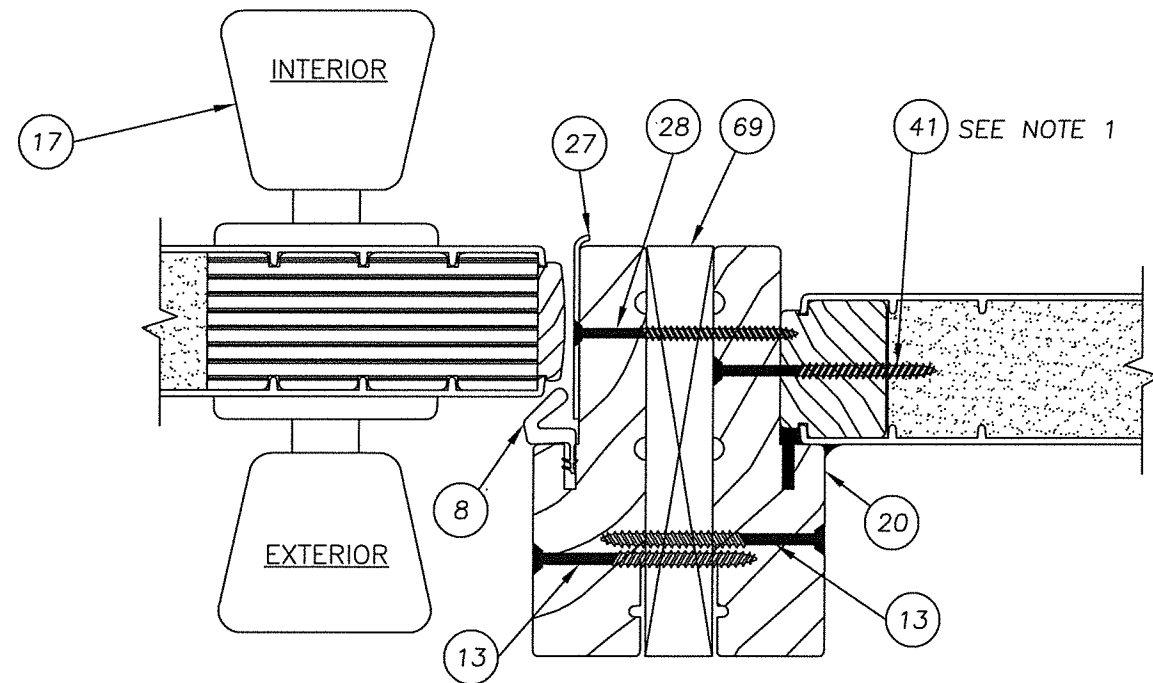
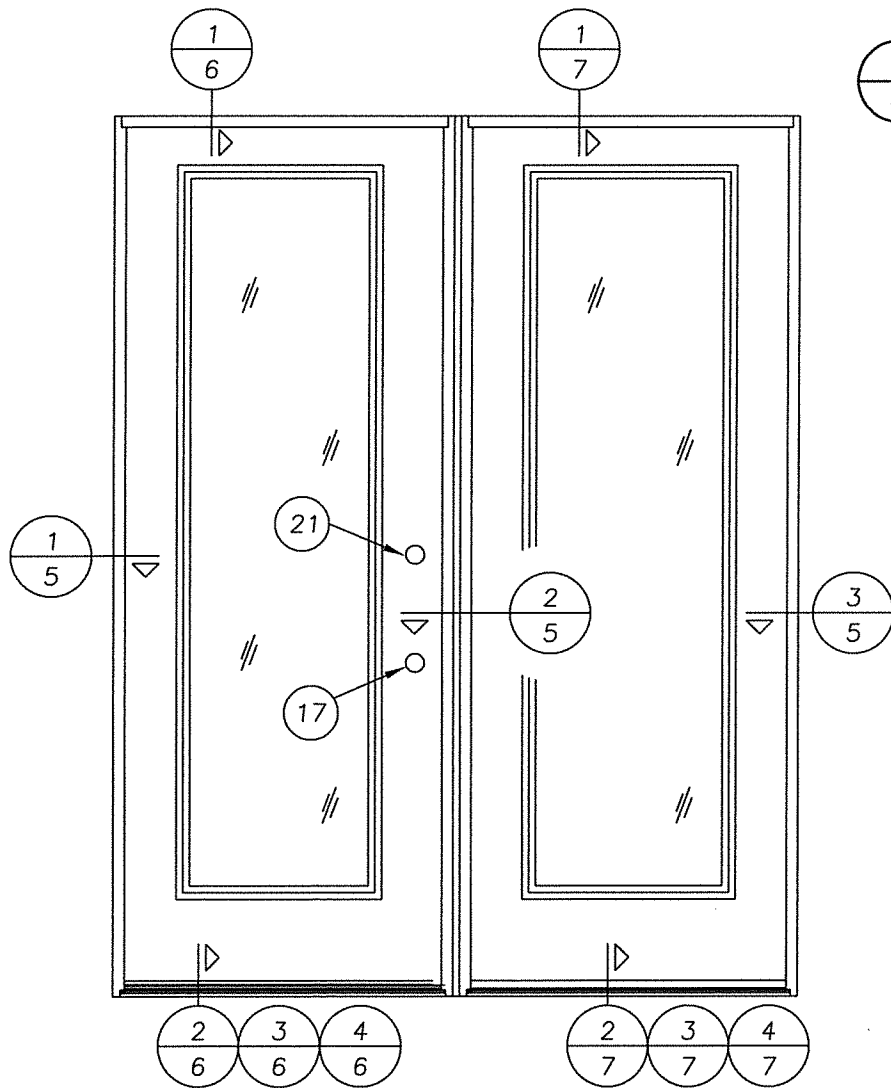
**NOTE:**  
 1. SIDELITE ASSEMBLY FASTENERS LOCATED 6" FROM ENDS PLUS 6 MORE EQUALLY SPACED (8 TOTAL).



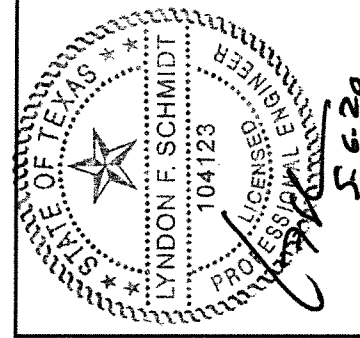
**1 HORIZONTAL CROSS SECTION**  
 5 INSWING SHOWN (OUTSWING ALSO APPROVED)  
 ("SMOOTH-STAR Series" shown)



**3 HORIZONTAL CROSS SECTION**  
 5 INSWING SHOWN (OUTSWING ALSO APPROVED)  
 ("SMOOTH-STAR Series" shown)



**2 HORIZONTAL CROSS SECTION**  
 5 INSWING SHOWN (OUTSWING ALSO APPROVED)  
 ("SMOOTH-STAR Series" shown)



Documents Prepared By: Lyndon F. Schmidt, P.E.  
 TEXAS P.E. #104123

**RW** BUILDING CONSULTANTS, INC.  
 P.O. Box 230 Valrico FL 33595  
 Phone No.: 813.659.9197

TEXAS BOARD OF PROFESSIONAL ENGINEERS  
 CERTIFICATE OF REGISTRATION # F-11852

PRODUCT: THERMA-TRU  
 GLAZED FIBERGLASS DOOR W/  
 SIDELITE IN/OUTSWING "IMPACT"  
 PART OR ASSEMBLY:  
 HORIZONTAL  
 CROSS SECTIONS

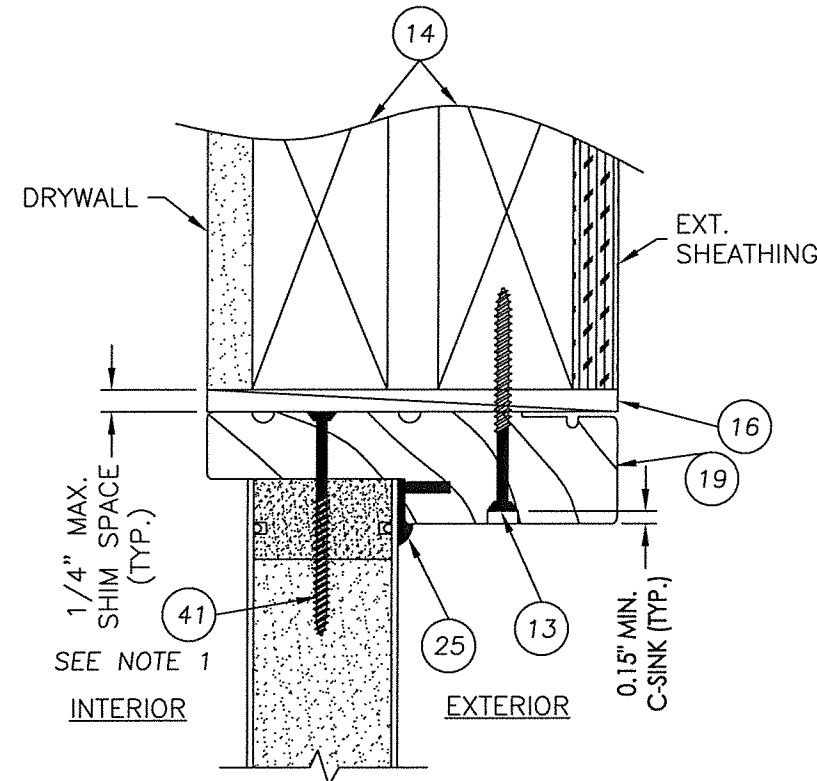
NO.	DATE	REVISIONS
2	5/06/20	UPDATE TO 2018 IBC/IRC CODE
1	7/22/15	ADDED GENERAL NOTE 5.

DATE: 7/17/12  
 SCALE: N.T.S.  
 DWG. BY: JK  
 CHK. BY: LFS  
 DRAWING NO.: TX-4196  
 SHEET 5 of 10



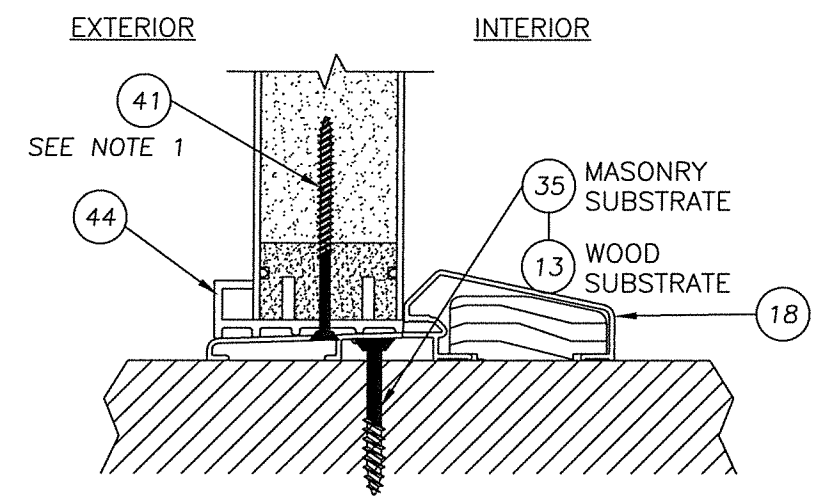


R:\Clients\Therma Tru PERMANENT\B - Texas Dept of Ins\TDI - DR 599 - 80 Glazed FG Imp IS - OS Sgls Dbls w-wo Imp SLAC - Drawings\Current\TX-4195-99.dwg, 7.6

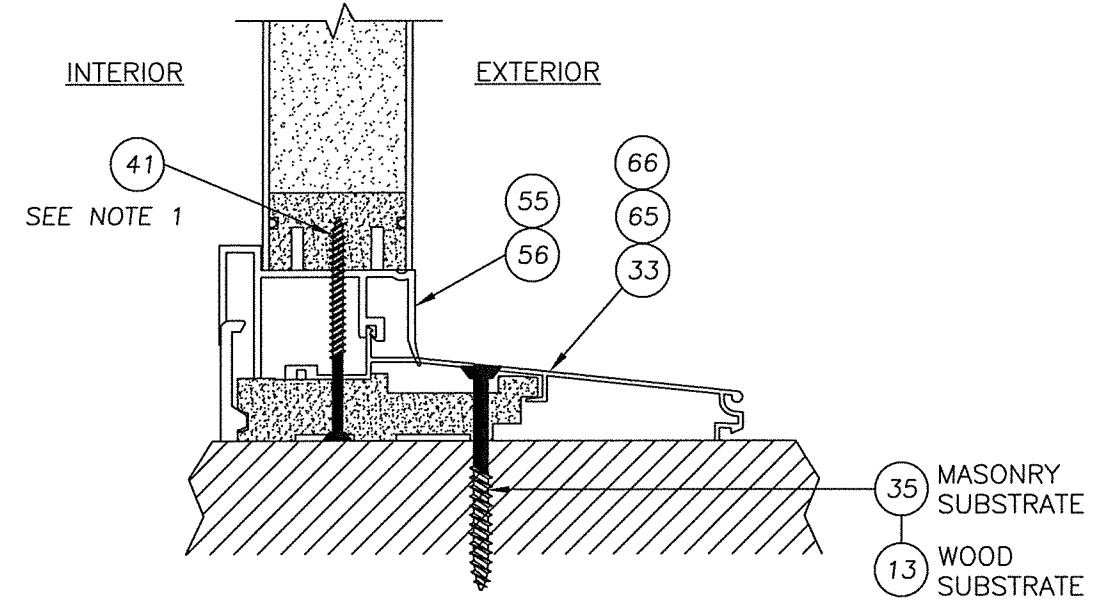


1 VERTICAL CROSS SECTION  
7 INSWING SHOWN (OUTSWING ALSO APPROVED)  
("SMOOTH-STAR SERIES" SHOWN)

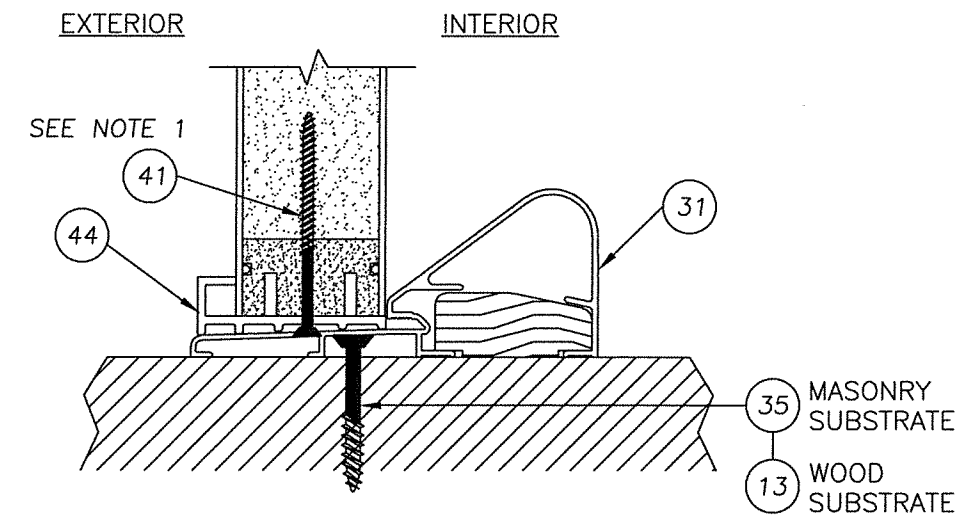
NOTE:  
1. SIDELITE ASSEMBLY FASTENERS LOCATED 6" FROM ENDS PLUS ONE AT CENTERLINE (3 TOTAL).



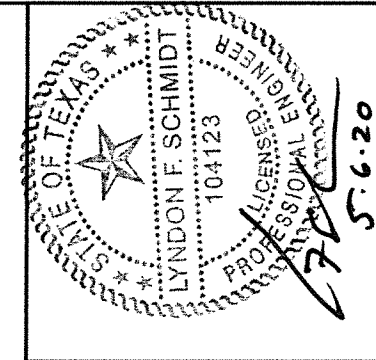
3 VERTICAL CROSS SECTION  
7 OUTSWING CONFIGURATION  
("SMOOTH-STAR SERIES" SHOWN)



2 VERTICAL CROSS SECTION  
7 INSWING CONFIGURATION  
("SMOOTH-STAR SERIES" SHOWN)



4 VERTICAL CROSS SECTION  
7 OUTSWING CONFIGURATION  
("SMOOTH-STAR SERIES" SHOWN)



Documents Prepared By: Lyndon F. Schmidt, P.E.  
TEXAS P.E. #104123  
**RW** BUILDING CONSULTANTS, INC.  
P.O. Box 230 Valrico FL 33595  
Phone No.: 813.659.9197  
TEXAS BOARD OF PROFESSIONAL ENGINEERS  
CERTIFICATE OF REGISTRATION # F-11852

PRODUCT: THERMA-TRU GLAZED FIBERGLASS DBL DOOR W/ SIDELITE IN/OUTSWING "IMPACT"  
PART OR ASSEMBLY: VERTICAL CROSS SECTIONS

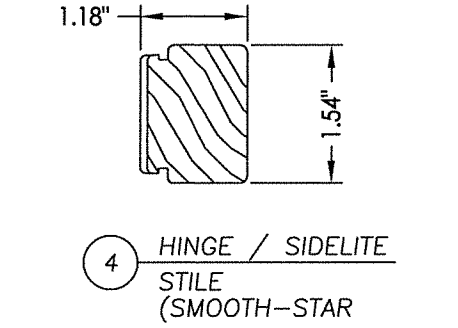
NO.	DATE	REVISIONS
2	5/06/20	UPDATE TO 2018 IBC/IRC CODE
1	7/22/15	ADDED GENERAL NOTE 5.
		LFS BY

DATE: 7/17/12  
SCALE: N.T.S.  
DWG. BY: JK  
CHK. BY: LFS  
DRAWING NO.: TX-4196  
SHEET 7 OF 10

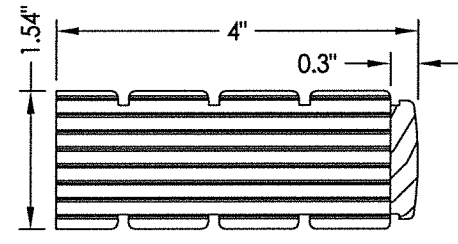




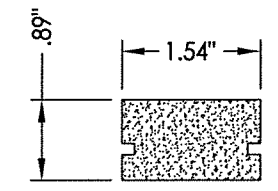
R:\Clients\Therma Tru PERMANENT\B - Texas Dept of Ins\TDI - DR 599 - 80 Glazed FG Imp IS - OS Sgls Dbis w-wo Imp SLAC - Drawings\Current\TX-4195-99.dwg, 9.6



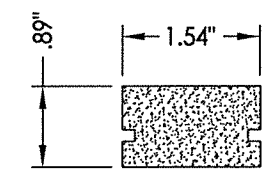
4 HINGE / SIDELITE STILE (SMOOTH-STAR)



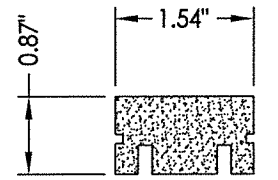
3 LATCH STILE (SMOOTH-STAR)



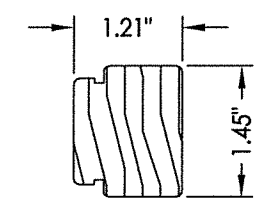
42 SIDELITE TOP RAIL (SMOOTH-STAR)



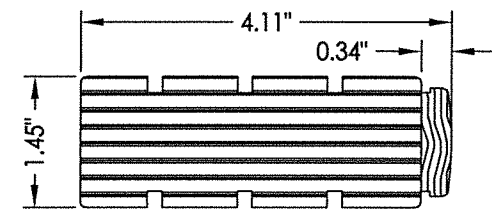
2 DOOR TOP RAIL (SMOOTH-STAR)



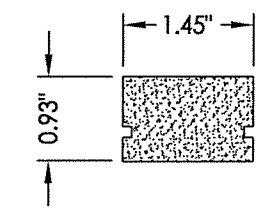
5 BOTTOM RAIL DOOR / SIDELITE (SMOOTH-STAR)



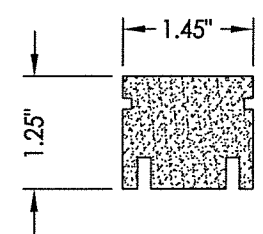
52 HINGE STILE (FIBER-CLASSIC)



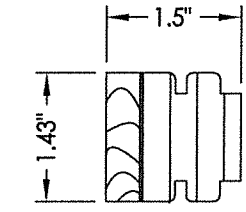
54 LOCK STILE (FIBER-CLASSIC)



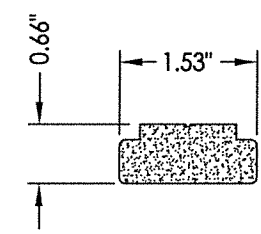
50 DOOR TOP RAIL (FIBER-CLASSIC)



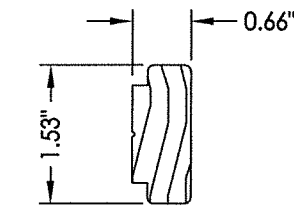
51 DOOR BOTTOM RAIL (FIBER-CLASSIC)



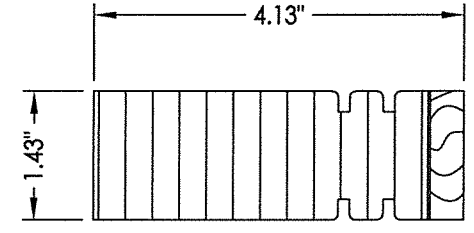
49 HINGE STILE (CLASSIC-CRAFT & RUSTIC)



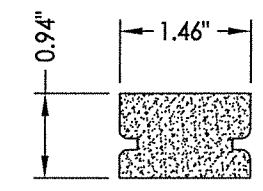
59 SIDELITE TOP & BOTTOM RAIL (CLASSIC-CRAFT & RUSTIC) (FIBER-CLASSIC)



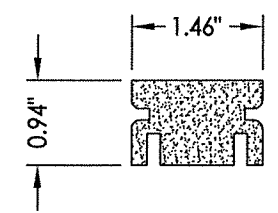
61 SIDELITE STILE (CLASSIC-CRAFT & RUSTIC) (FIBER-CLASSIC)



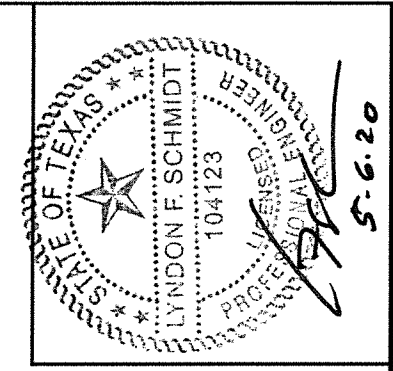
48 LATCH STILE (CLASSIC-CRAFT & RUSTIC)



46 DOOR TOP RAIL (CLASSIC-CRAFT & RUSTIC)



47 DOOR BOTTOM RAIL (CLASSIC-CRAFT & RUSTIC)



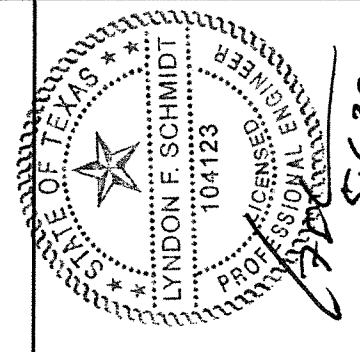
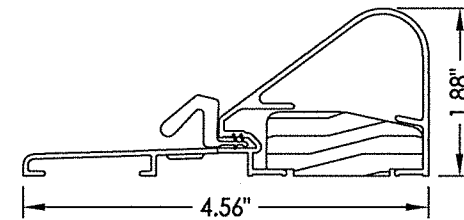
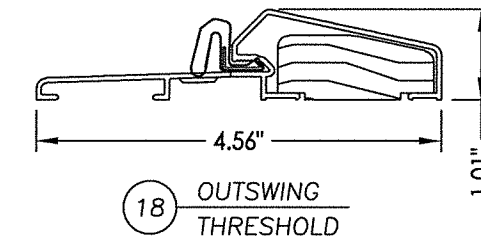
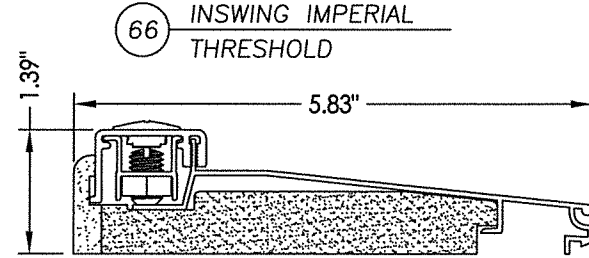
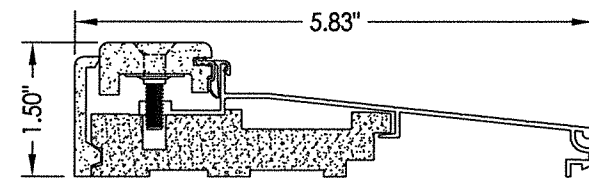
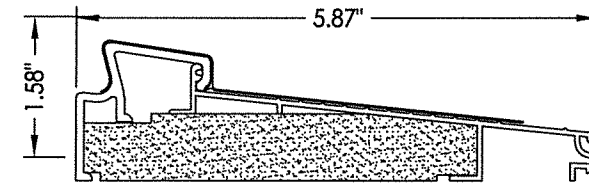
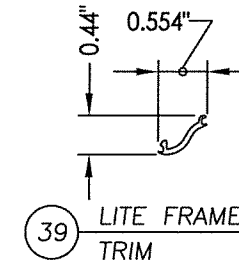
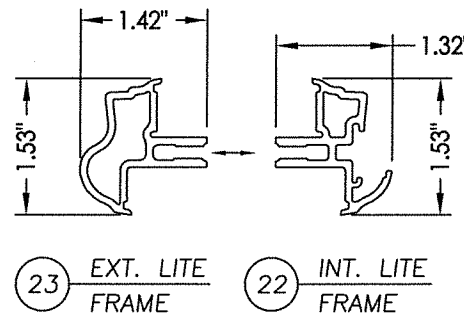
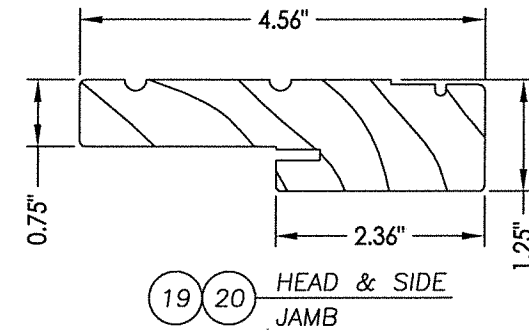
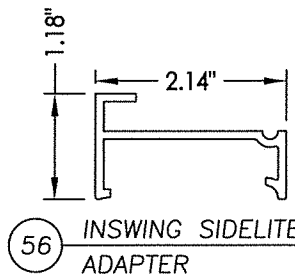
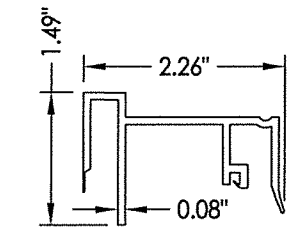
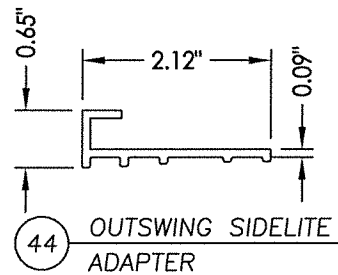
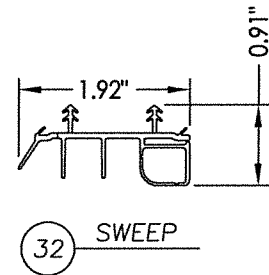
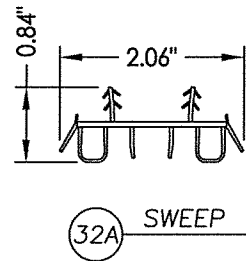
Documents Prepared By: Lyndon F. Schmidt, P.E. TEXAS P.E. #104123

RW BUILDING CONSULTANTS, INC. P.O. Box 230 Valrico FL 33595 Phone No.: 813.659.9197

TEXAS BOARD OF PROFESSIONAL ENGINEERS CERTIFICATE OF REGISTRATION # F-11852

PRODUCT:		THERMA-TRU DOOR W/ GLAZED FIBERGLASS SIDELITE IN/OUTSWING "IMPACT"	
PART OR ASSEMBLY:		COMPONENTS	
NO.	DATE	REVISIONS	BY
2	5/06/20	UPDATE TO 2018 IBC/IRC CODE	LFS
1	7/22/15	ADDED GENERAL NOTE 5.	LFS
DATE: 7/17/12		SCALE: N.T.S.	
DWG. BY: JK		CHK. BY: LFS	
DRAWING NO.: TX-4196		SHEET 9 OF 10	

Item	DESCRIPTION	Material
1	DOOR SKIN; SMOOTH-STAR SERIES (.075" MIN.)	FIBERGLASS
1A	DOOR SKIN; CLASSIC-CRAFT & RUSTIC SERIES (0.090" MIN.)	FIBERGLASS
1B	DOOR SKIN; FIBER-CLASSIC SERIES (.065" MIN.)	FIBERGLASS
2	TOP RAIL DOOR THERMA-TRU (SMOOTH-STAR)	COMP.
3	LATCH STILE DOOR THERMA-TRU (SMOOTH-STAR)	LVL
4	HINGE STILE / DOOR, STILE / SIDELITE THERMA-TRU (SMOOTH-STAR)	WOOD
5	BOTTOM RAIL DOOR THERMA-TRU (SMOOTH-STAR)	COMP.
6	POLYURETHANE FOAM (1.9lbs. DENSITY)	FOAM
7	MEDIUM REACH COMPRESSION WEATHER-STRIP (THERMA-TRU)	FOAM
8	LONG REACH COMPRESSION WEATHER-STRIP (THERMA-TRU)	FOAM
9	4" x 4" HINGE .097" THK. (THERMA-TRU)	STEEL
10	#10 x 3/4" PFH WOOD SCREW (Hinge to Frame)	STEEL
12	#10 x 2" PFH WOOD SCREW	STEEL
13	#10 x 2-1/2" PFH WOOD SCREW	STEEL
14	2X FRAMING (G >= 0.42)	WOOD
16	MAX. 1/4" SHIM MATERIAL	WOOD
17	LOCK - KWIKSET 200 SERIES	STEEL
18	THRESHOLD OUTSWING (THERMA-TRU)	ALUM./WOOD
19	HEADER JAMB (4.656" x 1.25" THERMA-TRU, PINE)	WOOD
20	SIDE JAMB (4.656" x 1.25" THERMA-TRU) (FJ PINE)	WOOD
21	DEADBOLT - KWIKSET 780 SERIES	STEEL
22	INTERIOR LITE FRAME	ALUM.
23	EXTERIOR LITE FRAME	ALUM.
24	LOCK BLOCK (SMOOTH-STAR)	WOOD
25	SILICONE CAULK	SILICONE
26	CELLULAR GLAZING TAPE	FOAM
27	LATCH STRIKE	STEEL
28	#8 x 2-1/2" PFH WOOD SCREW	STEEL
29	#8 x 3" PFH SCREW	STEEL
30	1" THK. INSUL. LAMINATED GLASS (SAFLEX PVB INTERLAYER) 1/8" TEMP.- AIR - 5/32" ANN. / 0.090" SAFLEX PVB / 1/8" ANN.	GLASS
31	OUTSWING THRESHOLD COASTAL	ALUM./WOOD
32	DOOR BOTTOM SWEEP (INSWING)	PVC
32A	DOOR BOTTOM SWEEP (INSWING)	PVC
33	INSWING THRESHOLD HPA	ALUM./COMP.
35	1/4" ELCO OR ITW CONCRETE SCREW (1-3/4" MIN. EMB.)	STEEL
39	LITE FRAME TRIM	ALUM.
40	#9 x 3" PFH WOOD SCREW	STEEL
41	#9 x 2-1/2" PFH SCREW	STEEL
44	OUTSWING SIDELITE ADAPTER	PVC
46	TOP RAIL (CLASSIC-CRAFT & RUSTIC)	COMP.
47	BOTTOM RAIL (CLASSIC-CRAFT & RUSTIC)	COMP.
48	LATCH SIDE STILE (CLASSIC-CRAFT & RUSTIC)	LSL / OAK
49	HINGE SIDE STILE (CLASSIC-CRAFT & RUSTIC)	LSL / OAK
50	TOP RAIL (FIBER-CLASSIC)	COMP.
51	BOTTOM RAIL (FIBER-CLASSIC)	COMP.
52	HINGE SIDE STILE (FIBER-CLASSIC)	WOOD
54	LATCH SIDE STILE (FIBER-CLASSIC)	LVL / OAK
55	INSWING SIDELITE SPACER	PVC
56	INSWING SIDELITE SPACER	PVC
59	SIDELITE TOP & BOTTOM RAIL (CLASSIC-CRAFT, RUSTIC & FIBER-CLASSIC)	COMP.
61	SIDELITE STILE (CLASSIC-CRAFT, RUSTIC & FIBER-CLASSIC)	WOOD
65	INSWING THRESHOLD SELF ADJUSTING	ALUM./COMP.
66	INSWING THRESHOLD IMPERIAL	ALUM./COMP.
67	DEAD BOLT STRIKE PLATE	STEEL
69	2X MULLION (G >= 0.42)	WOOD



Documents Prepared By: Lyndon F. Schmidt, P.E.  
TEXAS P.E. #104123

**RW** BUILDING CONSULTANTS, INC.  
P.O. Box 230 Valrico FL 33595  
Phone No.: 813.659.9197

TEXAS BOARD OF PROFESSIONAL ENGINEERS  
CERTIFICATE OF REGISTRATION # F-11852

PRODUCT: THERMA-TRU GLAZED FIBERGLASS DOOR WITH SIDELITE IN/OUTSWING "IMPACT"

PART OR ASSEMBLY: BILL OF MATERIAL & COMPONENTS

NO.	DATE	REVISIONS
2	5/06/20	UPDATE TO 2018 IBC/IRC CODE
1	7/22/15	ADDED GENERAL NOTE 5.

DATE: 7/17/12  
SCALE: N.T.S.  
DWG. BY: JK  
CHK. BY: LFS  
DRAWING NO.: TX-4196  
SHEET 10 OF 10