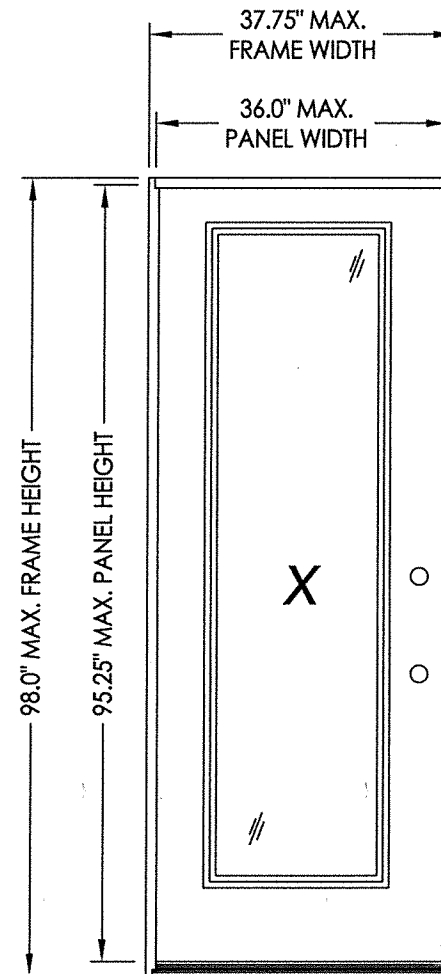


THERMA TRU®

118 INDUSTRIAL DR., EDGERTON, OH 43517

"SMOOTH-STAR", "FIBER-CLASSIC", "CLASSIC-CRAFT" & "CLASSIC-CRAFT RUSTIC" GLAZED FIBERGLASS SINGLE DOOR IN SWING / OUT SWING "IMPACT"



"SMOOTH-STAR", "FIBER-CLASSIC"
"CLASSIC-CRAFT" & "CLASSIC-CRAFT RUSTIC"

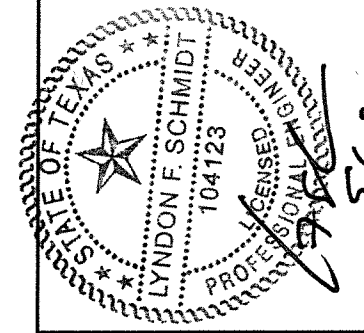
EVALUATED FOR USE IN THE STATE OF TEXAS

The Fiberglass Door system described herein complies with the 2018 International Residential Code (IRC), Sections R301 & R609 and the 2018 International Building Code (IBC), Sections 1404.13, 1609, 1709.5, 2403 and 2404 subject to the following conditions:

1. Anchors shall be as listed and spaced as shown in the details. Anchor embedment to base material shall be beyond wall dressing or stucco.
2. This system has been tested and evaluated as a large missile impact protective system for installation in areas that require wind borne debris protection. This product meets missile level "D" as defined in ASTM E 1996.
3. Allowable design pressure requirements must be equal to or less than the design pressure rating shown in the design pressure chart, sheet 1 of this drawing.
4. Conditions not covered by this drawing are subject to further engineering analysis.
5. Fiber-Classic and Smooth-Star Door and Sidelite panels require the use of "J" part numbers. These door and sidelite panels must be stained or painted within six months of installation.

TABLE OF CONTENTS	
SHEET #	DESCRIPTION
1	TYPICAL ELEVATION, DESIGN PRESSURES & GENERAL NOTES
2	"SMOOTH-STAR" DOOR PANEL DETAILS
3	"CLASSIC-CRAFT" & "CLASSIC-CRAFT RUSTIC" DOOR PANEL DETAILS
4	"FIBER-CLASSIC" DOOR PANEL DETAILS
5	HORIZONTAL CROSS SECTIONS
6	VERTICAL CROSS SECTIONS
7	FRAME ANCHORING
8	COMPONENTS
9	BILL OF MATERIALS & COMPONENTS

SWING	OVERALL FRAME DIMENSION	OVERALL D.L.O. DOOR / SIDELITE DIMENSION	DESIGN PRESSURE (PSF)	
			POSITIVE	NEGATIVE
IN SWING	37.75" X 98.0"	21.0" X 78.75"	+50.0	-50.0
OUT SWING	37.75" X 96.75"	21.0" X 78.75"	+50.0	-50.0

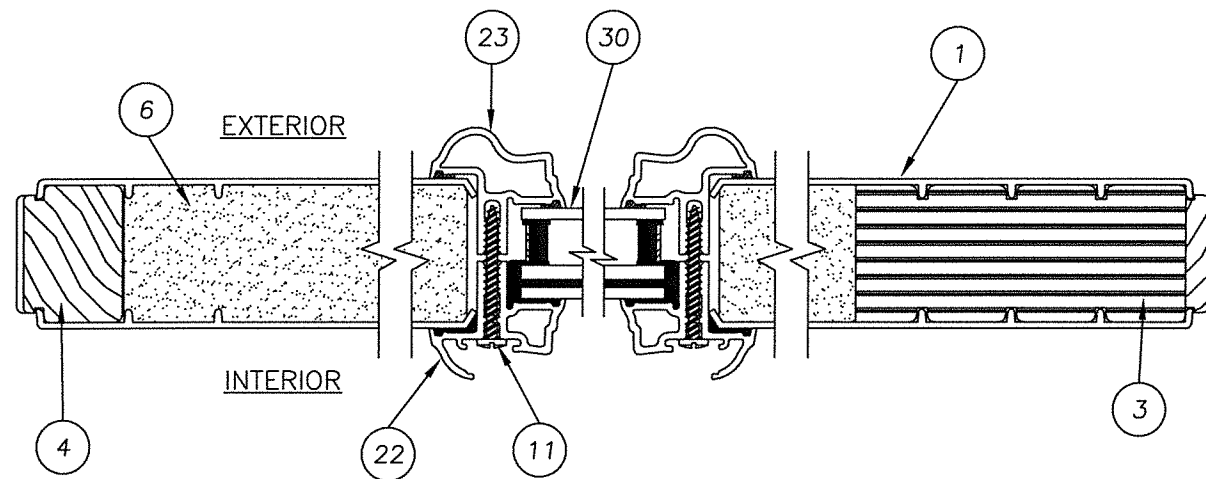
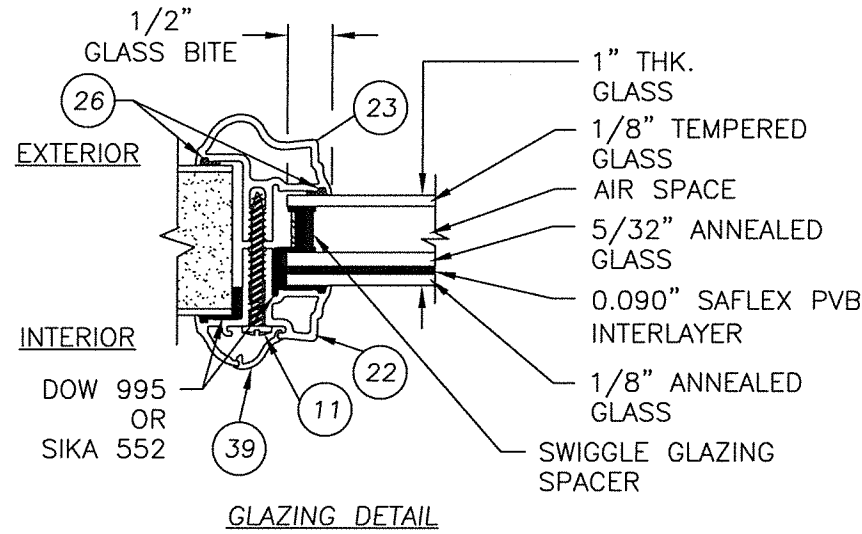
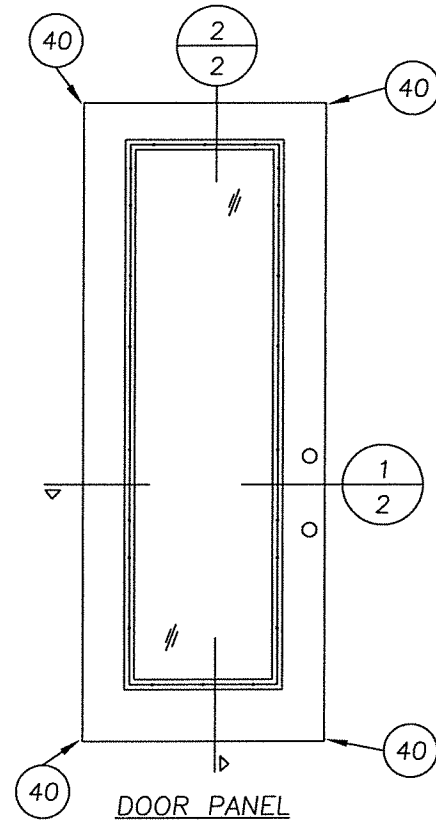


Documents Prepared By: Lyndon F. Schmidt, P.E.
TEXAS P.E. #104123

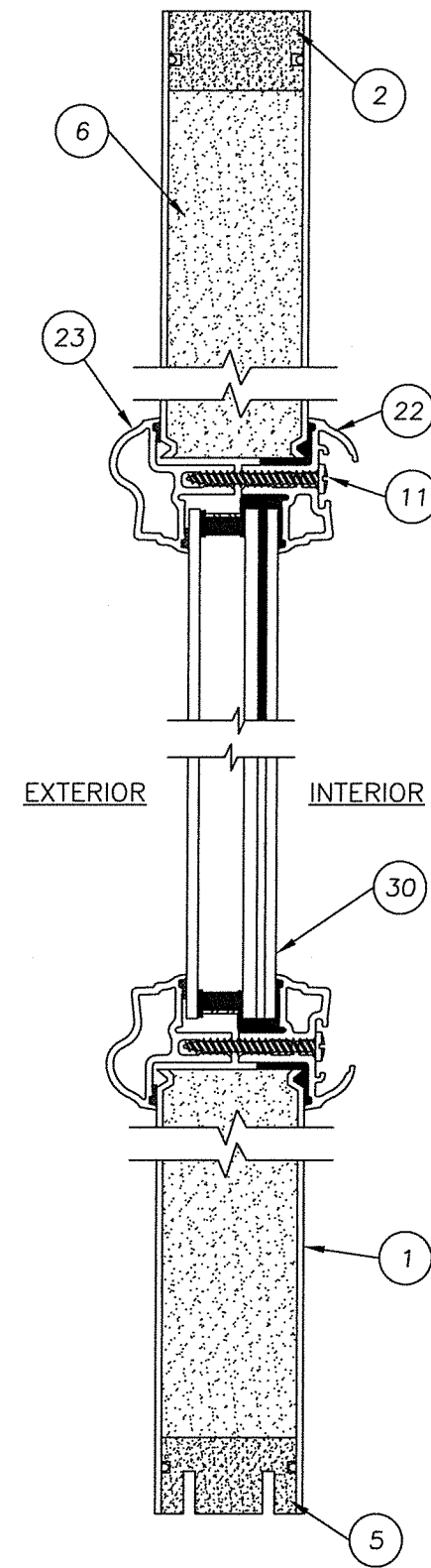
RW BUILDING CONSULTANTS, INC.
P.O. Box 230 Valrico FL 33595
Phone No.: 813.659.9197

TEXAS BOARD OF PROFESSIONAL ENGINEERS
CERTIFICATE OF REGISTRATION # F-11852

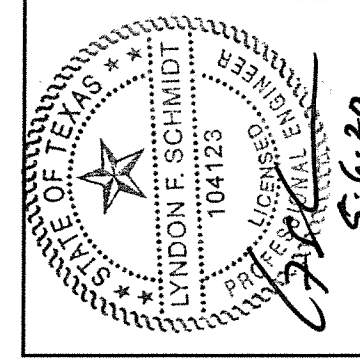
PRODUCT:		THERMA-TRU GLAZED FIBERGLASS DOOR IN/OUTSWING "IMPACT"	
PART OR ASSEMBLY:		TYPICAL ELEVATION, DESIGN PRESSURES & GENERAL NOTES	
		LFS	BY
2	5/06/20 UPDATE TO 2018 IBC/IRC CODE	LFS	
1	7/22/15 ADDED GENERAL NOTE 5.		
	NO. DATE		
REVISIONS			
DATE: 7/17/12			
SCALE: N.T.S.			
DWG. BY: JK			
CHK. BY: LFS			
DRAWING NO.: TX-4195			
SHEET 1 OF 9			



1 HORIZONTAL CROSS SECTION
2 DOOR PANEL



2 VERTICAL CROSS SECTION
2 DOOR PANEL

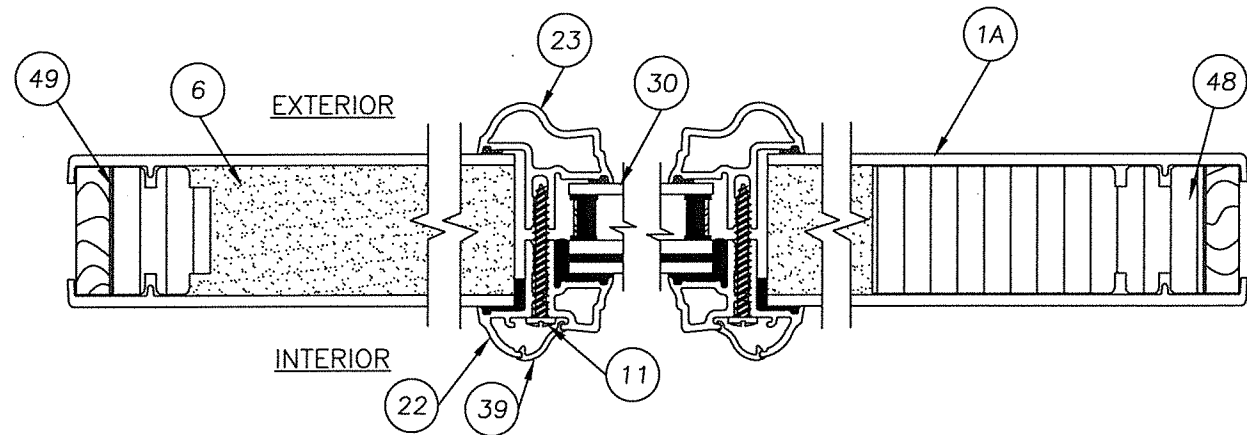
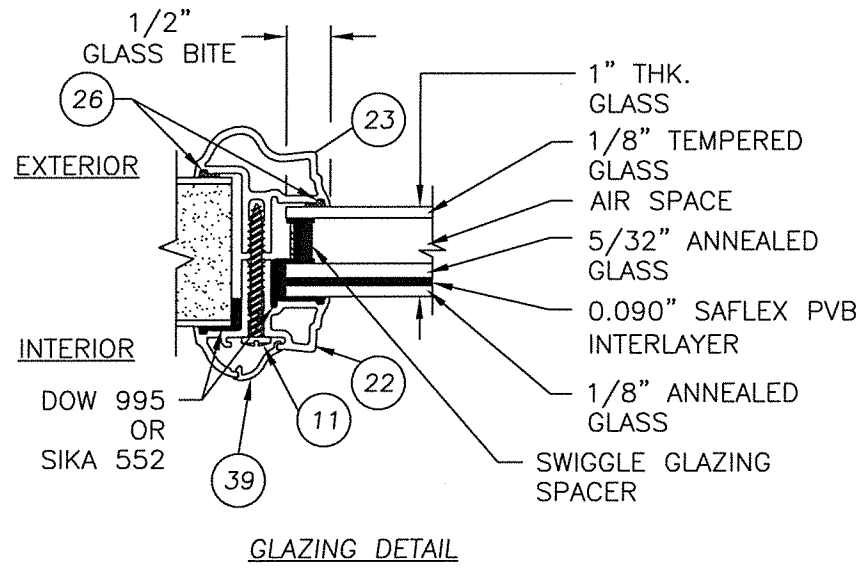
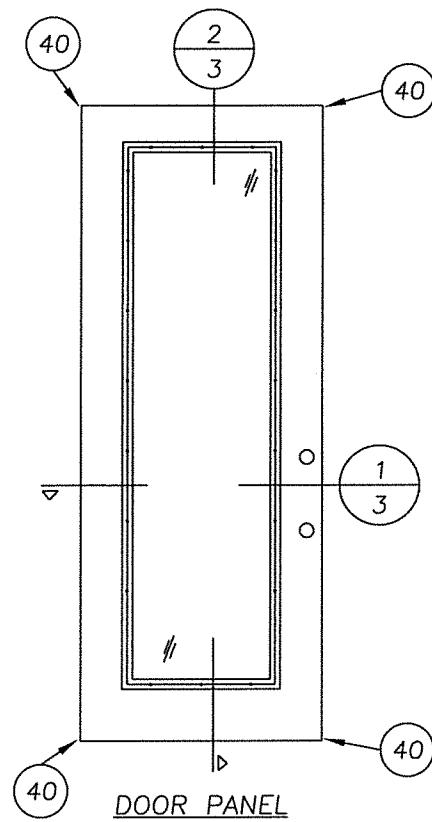


Documents Prepared By: Lyndon F. Schmidt, P.E.
TEXAS P.E. #104123

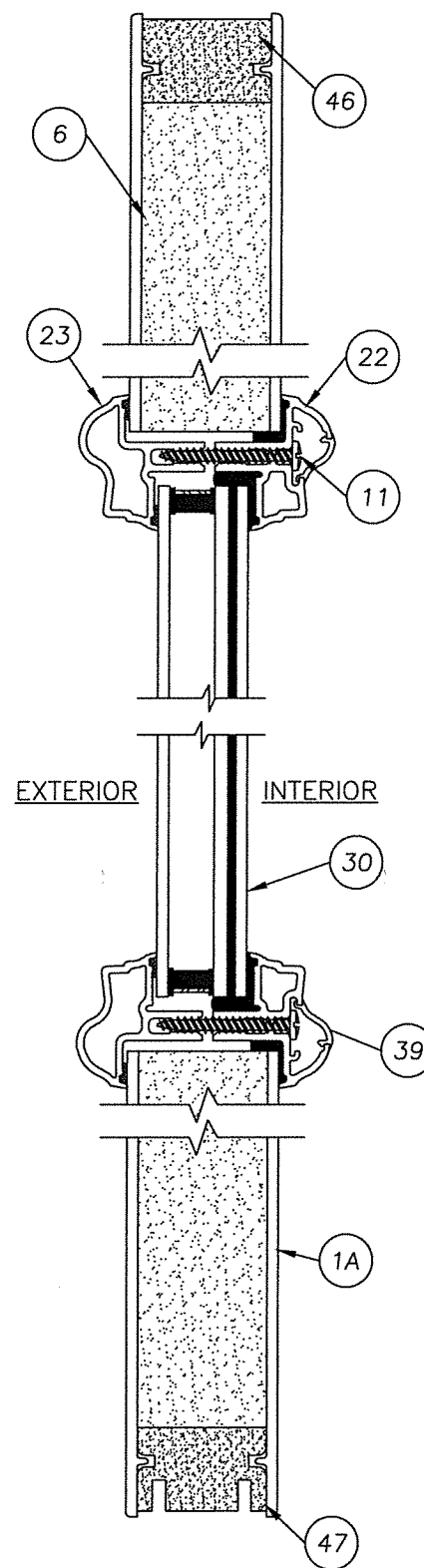
RW BUILDING CONSULTANTS, INC.
P.O. Box 230 Valrico FL 33595
Phone No.: 813.659.9197

TEXAS BOARD OF PROFESSIONAL ENGINEERS
CERTIFICATE OF REGISTRATION # F-11852

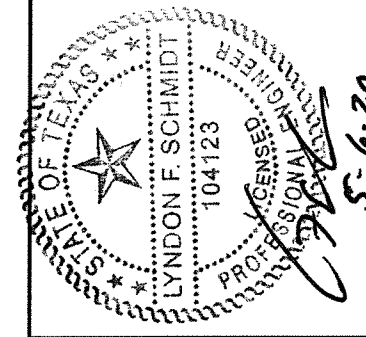
PRODUCT:		THERMA-TRU GLAZED FIBERGLASS DOOR IN/OUTSWING "IMPACT"	
PART OR ASSEMBLY:		"SMOOTH-STAR" DOOR PANEL DETAILS	
NO.	DATE	BY	REVISIONS
2	5/06/20	LFS	UPDATE TO 2018 IBC/IRC CODE
1	7/22/15	LFS	ADDED GENERAL NOTE 5.
DATE:		7/17/12	
SCALE:		N.T.S.	
DWG. BY:		JK	
CHK. BY:		LFS	
DRAWING NO.:		TX-4195	
SHEET		2 OF 9	



1 HORIZONTAL CROSS SECTION
3 DOOR PANEL



2 VERTICAL CROSS SECTION
3 DOOR PANEL



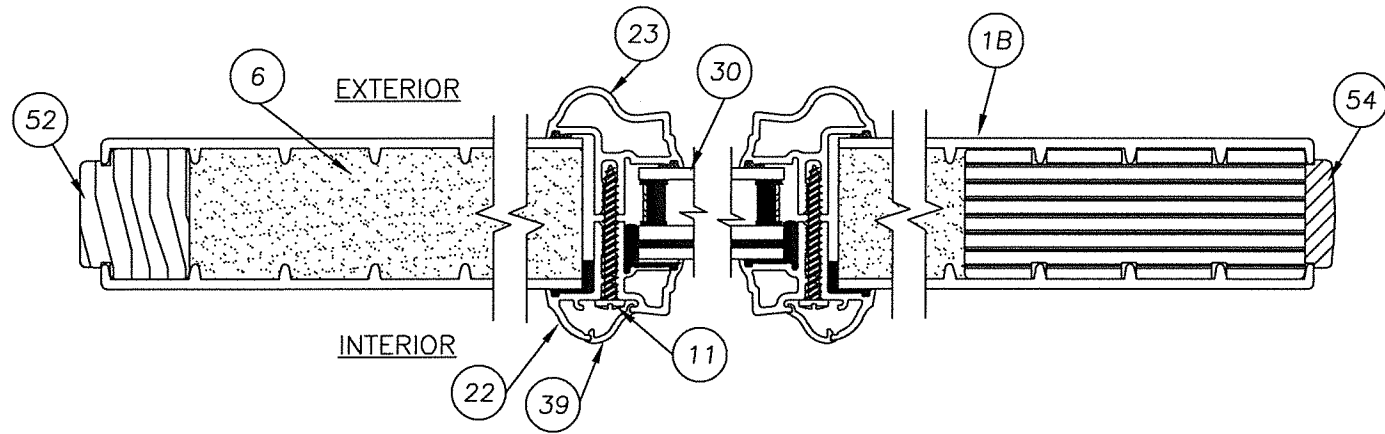
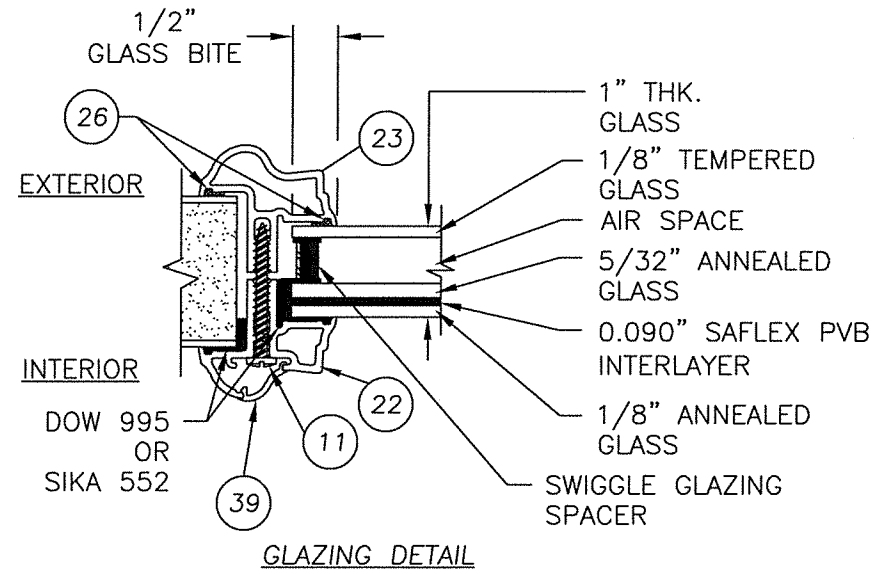
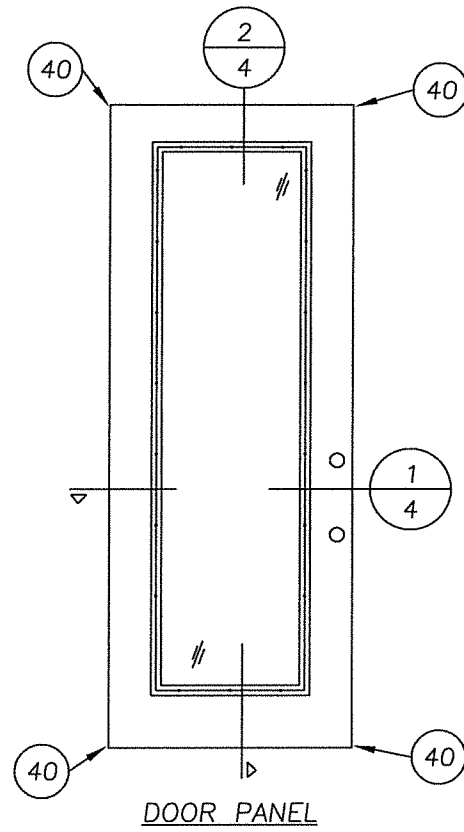
Documents Prepared By: Lyndon F. Schmidt, P.E.
TEXAS P.E. #104123

RW BUILDING CONSULTANTS, INC.
P.O. Box 230 Valrico FL, 33595
Phone No.: 813.659.9197
TEXAS BOARD OF PROFESSIONAL ENGINEERS
CERTIFICATE OF REGISTRATION # F-11852

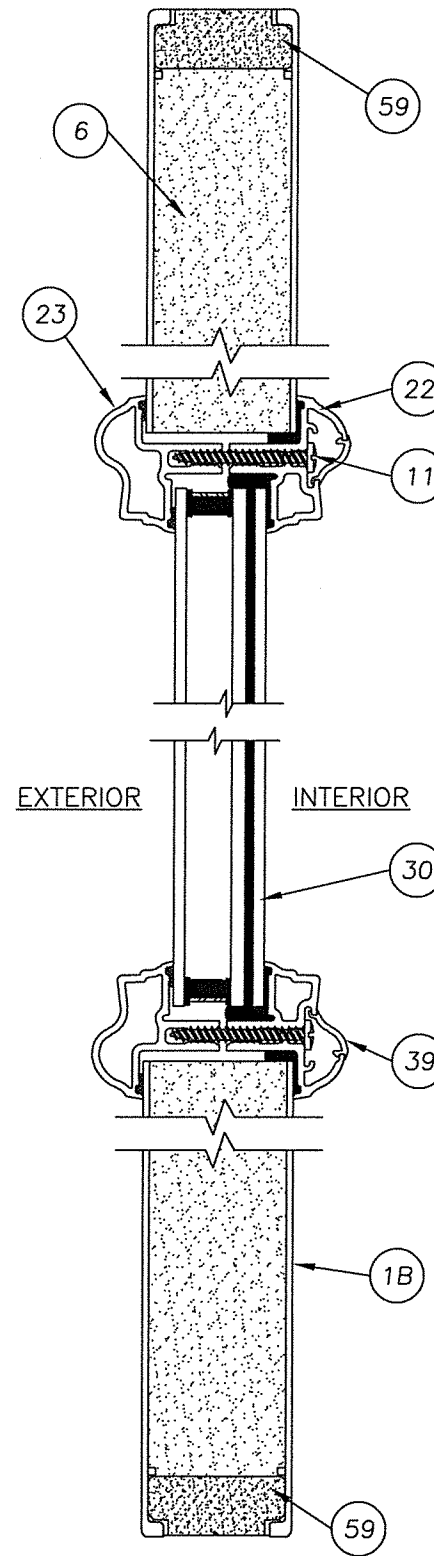
PRODUCT: THERMA-TRU
GLAZED FIBERGLASS DOOR
IN/OUTSWING "IMPACT"
PART OR ASSEMBLY:
"CLASSIC-CRAFT" & "C.C. RUSTIC"
DOOR PANEL DETAILS

NO.	DATE	BY	REVISIONS
2	5/06/20	LFS	UPDATE TO 2018 IBC/IRC CODE
1	7/22/15	LFS	ADDED GENERAL NOTE 5.

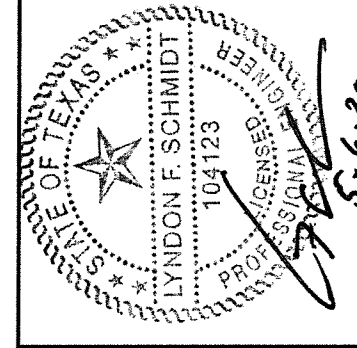
DATE: 7/17/12
SCALE: N.T.S.
DWG. BY: JK
CHK. BY: LFS
DRAWING NO.: TX-4195
SHEET 3 OF 9



1 HORIZONTAL CROSS SECTION
4 DOOR PANEL



2 VERTICAL CROSS SECTION
4 DOOR PANEL



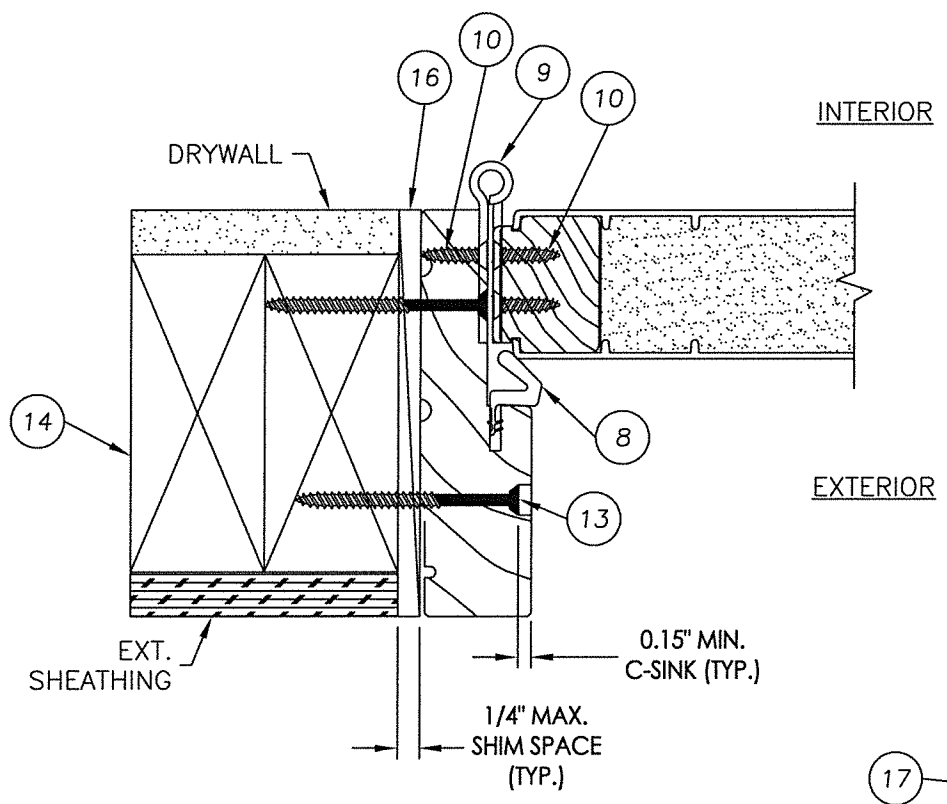
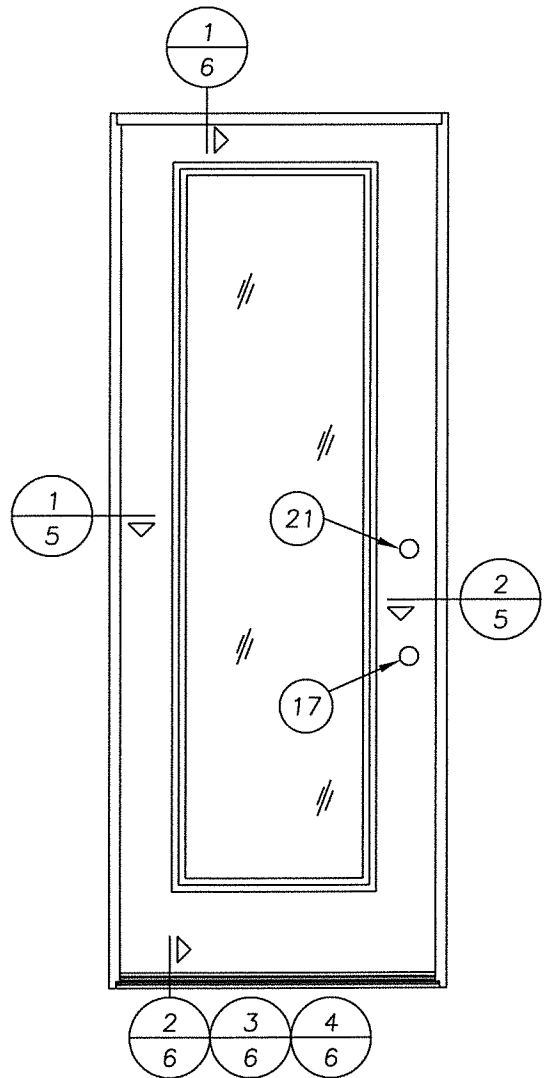
Documents Prepared By: Lyndon F. Schmidt, P.E.
TEXAS P.E. #104123

R.W. BUILDING CONSULTANTS, INC.
P.O. Box 230 Valrico FL 33595
Phone No.: 813.659.9197

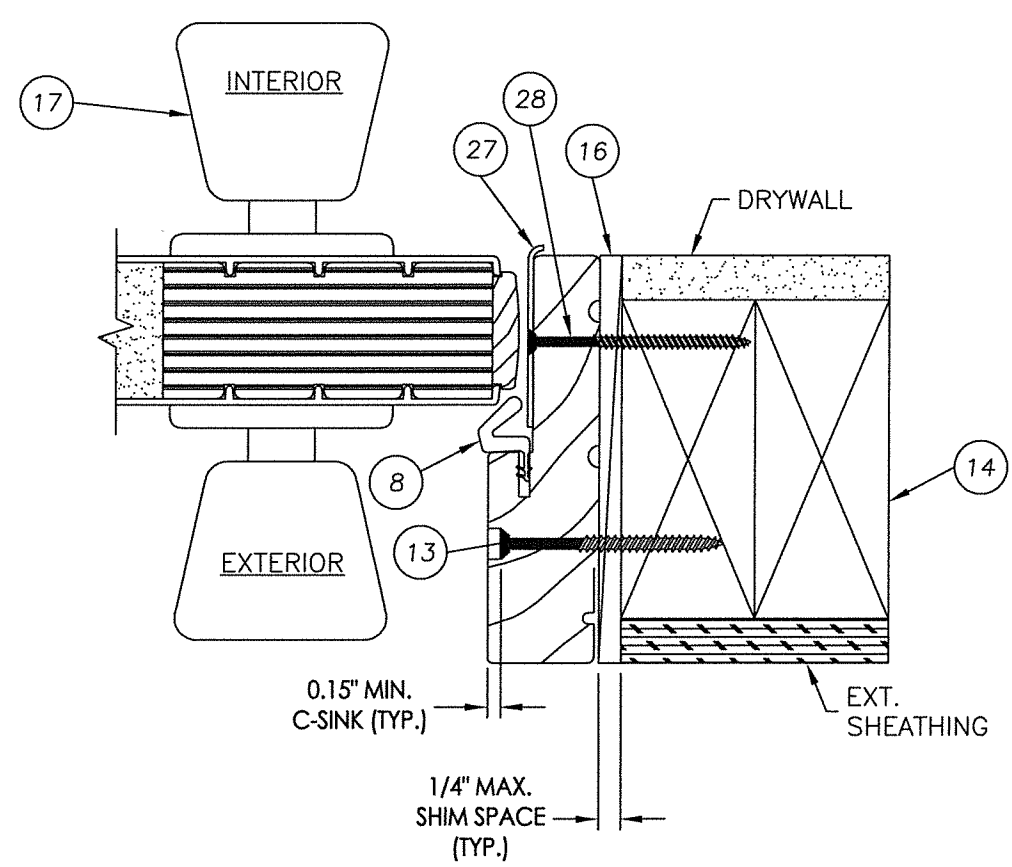
TEXAS BOARD OF PROFESSIONAL ENGINEERS
CERTIFICATE OF REGISTRATION # F-11852

PRODUCT:		THERMA-TRU GLAZED FIBERGLASS DOOR IN/OUTSWING "IMPACT"	
PART OR ASSEMBLY:		"FIBER-CLASSIC" DOOR PANEL DETAILS	
NO.	DATE	BY	REVISIONS
2	5/06/20	LFS	UPDATE TO 2018 IBC/IRC CODE
1	7/22/15	LFS	ADDED GENERAL NOTE 5.
DATE: 7/17/12		SCALE: N.T.S.	
DWG. BY: JK		CHK. BY: LFS	
DRAWING NO.: TX-4195		SHEET 4 OF 9	

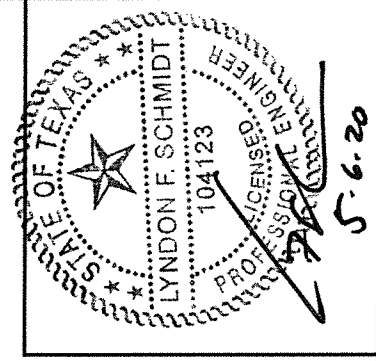
R:\Clients\Therma Tru PERMANENT\B - Texas Dept of Ins\TDI - DR 599 - 80 Glazed FG Imp IS - OS Sgls Dbls w-wo Imp SLAC - Drawings\Current\TX-4195-99.dwg, 5.5



1 HORIZONTAL CROSS SECTION
5 INSWING SHOWN (OUTSWING ALSO APPROVED)
 ("SMOOTH-STAR Series" shown)



2 HORIZONTAL CROSS SECTION
5 INSWING SHOWN (OUTSWING ALSO APPROVED)
 ("SMOOTH-STAR Series" shown)

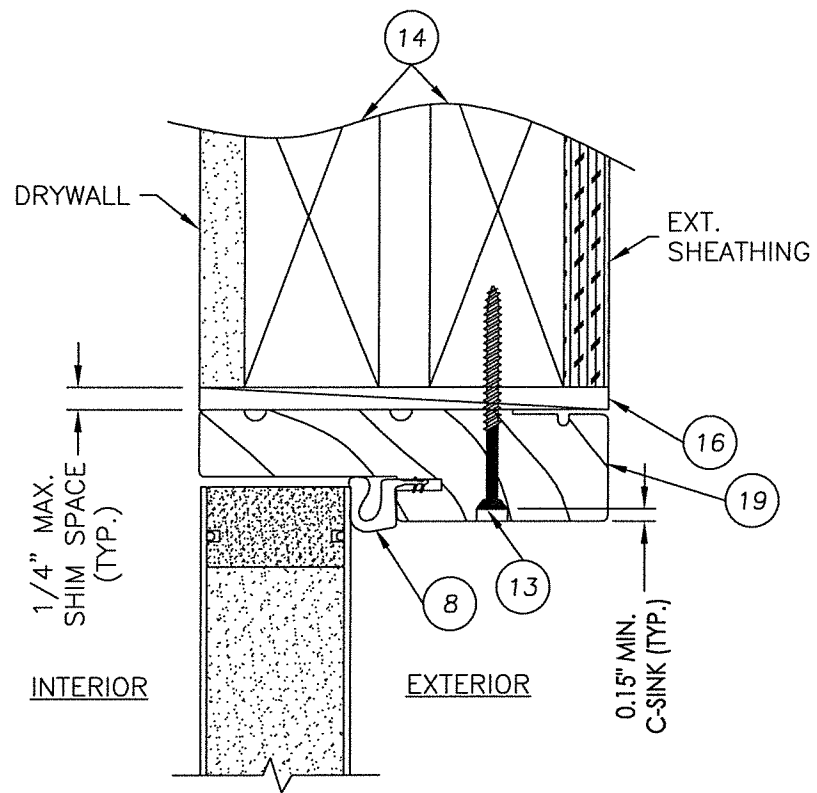


Documents Prepared By: Lyndon F. Schmidt, P.E.
 TEXAS P.E. #104123

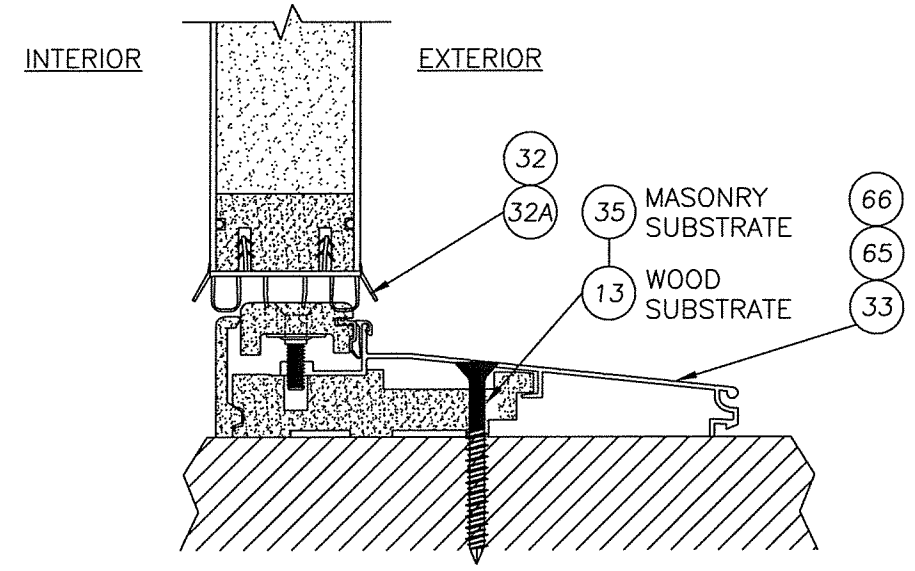
RW BUILDING CONSULTANTS, INC.
 P.O. Box 230 Volrico FL 33595
 Phone No.: 813.659.9197

TEXAS BOARD OF PROFESSIONAL ENGINEERS
 CERTIFICATE OF REGISTRATION # F-11852

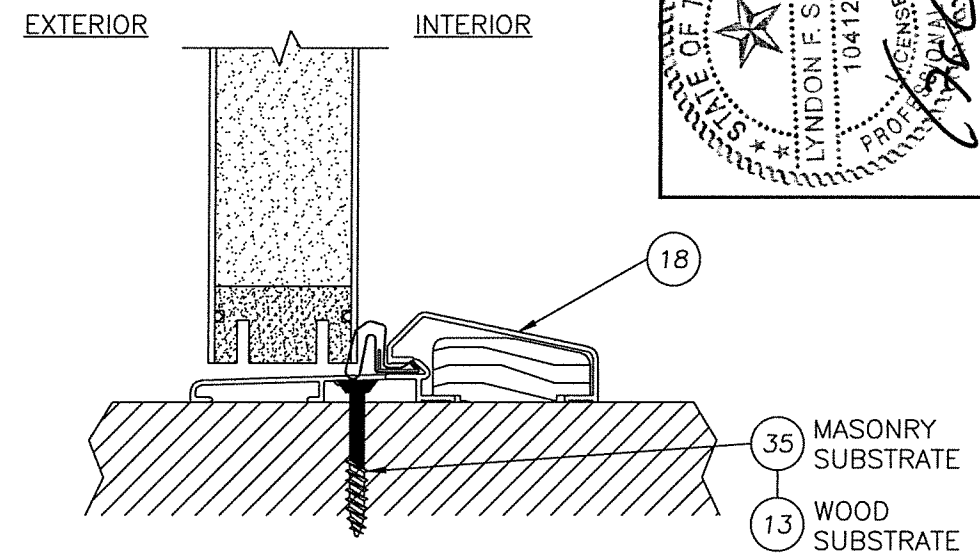
PRODUCT:	Therma-TRU GLAZED FIBERGLASS DOOR IN/OUTSWING "IMPACT"	
PART OR ASSEMBLY:	HORIZONTAL CROSS SECTIONS	
NO.	DATE	BY
2	5/06/20	LFS
1	7/22/15	LFS
REVISIONS		
DATE: 7/17/12		
SCALE: N.T.S.		
DWG. BY: JK		
CHK. BY: LFS		
DRAWING NO.: TX-4195		
SHEET 5 OF 9		



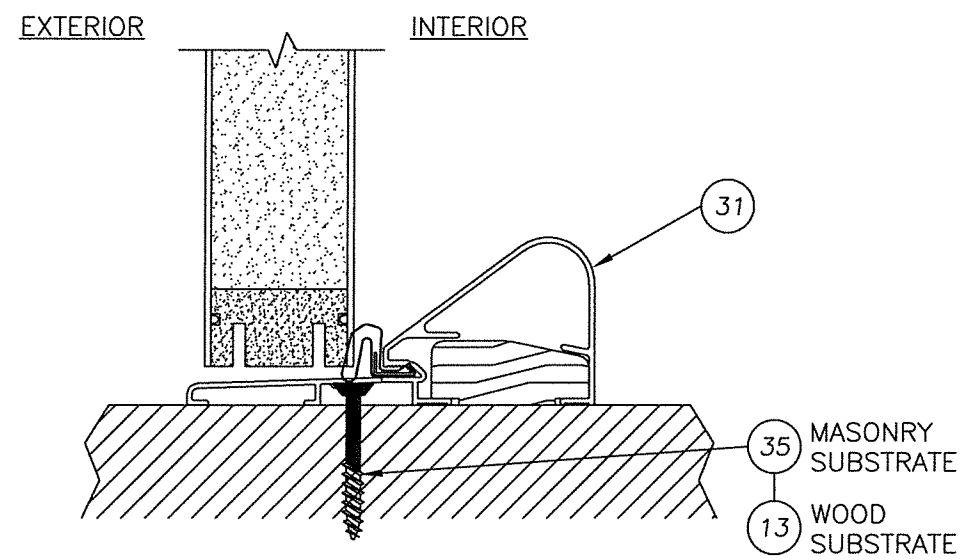
1 VERTICAL CROSS SECTION
6 INSWING SHOWN (OUTSWING ALSO APPROVED)
("SMOOTH-STAR SERIES" SHOWN)



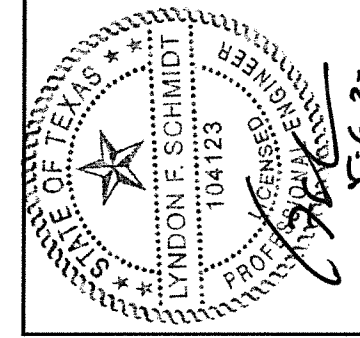
2 VERTICAL CROSS SECTION
6 INSWING CONFIGURATION
("SMOOTH-STAR SERIES" SHOWN)



3 VERTICAL CROSS SECTION
6 OUTSWING CONFIGURATION
("SMOOTH-STAR SERIES" SHOWN)



4 VERTICAL CROSS SECTION
6 OUTSWING CONFIGURATION
("SMOOTH-STAR SERIES" SHOWN)



Documents Prepared By: Lyndon F. Schmidt, P.E.
TEXAS P.E. #104123

RW BUILDING CONSULTANTS, INC.
P.O. Box 230 Valrico FL 33595
Phone No.: 813.659.9197

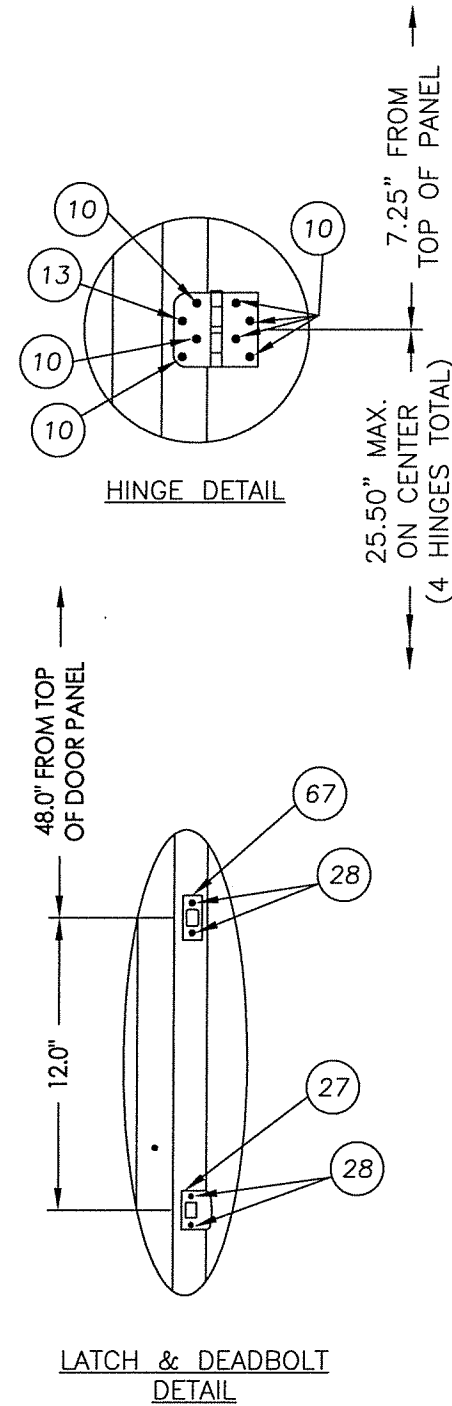
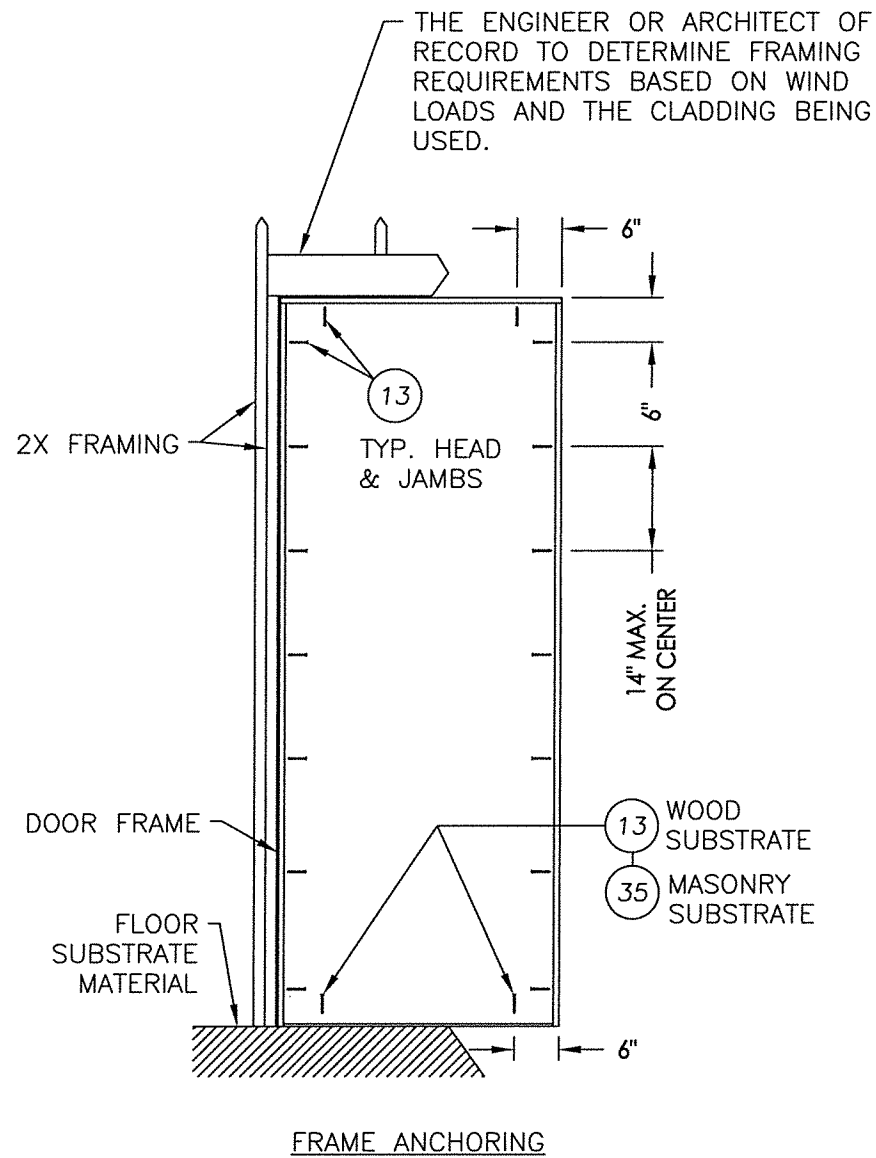
TEXAS BOARD OF PROFESSIONAL ENGINEERS
CERTIFICATE OF REGISTRATION # F-11852

PRODUCT: THERMA-TRU
GLAZED FIBERGLASS DOOR
IN/OUTSWING IMPACT

PART OR ASSEMBLY: VERTICAL
CROSS SECTIONS

NO.	DATE	REVISIONS
2	5/06/20	UPDATE TO 2018 IBC/IRC CODE
1	7/22/15	ADDED GENERAL NOTE 5.

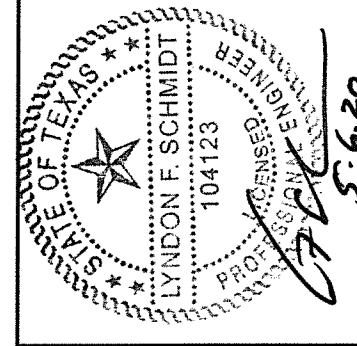
DATE: 7/17/12
SCALE: N.T.S.
DWG. BY: JK
CHK. BY: LFS
DRAWING NO.: TX-4195
SHEET 6 OF 9



CONCRETE ANCHOR NOTES:

1. Concrete anchor locations at the corners may be adjusted to maintain the min. edge distance to mortar joints.
2. Concrete anchor locations noted as "MAX. ON CENTER" must be adjusted to maintain the min. edge distance to mortar joints, additional concrete anchors may be required to ensure the "MAX. ON CENTER" dimension are not exceeded.
3. Concrete anchor table:

ANCHOR TYPE	ANCHOR SIZE	MIN. EMBEDMENT	MIN. CLEARANCE TO MASONRY EDGE	MIN. CLEARANCE TO ADJACENT ANCHOR
ITW TAPCON®	1/4"	1-3/4"	2-1/2"	3"
ELCO ULTRACON®	1/4"	1-3/4"	1"	3"



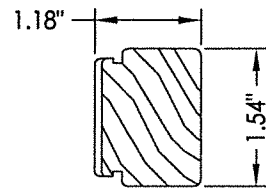
Documents Prepared By: Lyndon F. Schmidt, P.E.
TEXAS P.E. #104123

RW BUILDING CONSULTANTS, INC.

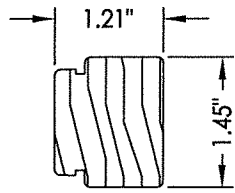
P.O. Box 230 Valrico FL 33595
Phone No.: 813.659.9197

TEXAS BOARD OF PROFESSIONAL ENGINEERS
CERTIFICATE OF REGISTRATION # F-11852

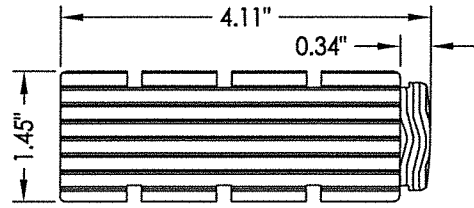
PRODUCT:		THERMA-TRU GLAZED FIBERGLASS DOOR IN/OUTSWING IMPACT	
PART OR ASSEMBLY:		FRAME ANCHORING	
NO.	DATE	LFS	BY
2	5/06/20	UPDATE TO 2018 IBC/IRC CODE	LFS
1	7/22/15	ADDED GENERAL NOTE 5.	LFS
REVISIONS			
DATE: 7/17/12			
SCALE: N.T.S.			
DWG. BY: JK			
CHK. BY: LFS			
DRAWING NO.: TX-4195			
SHEET 7 OF 9			



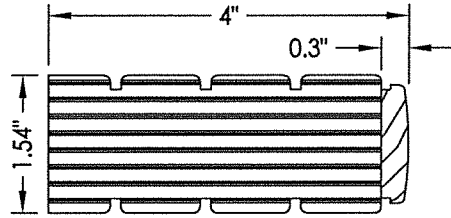
4 HINGE STILE
(SMOOTH-STAR)



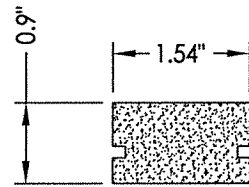
52 HINGE STILE
(FIBER-CLASSIC)



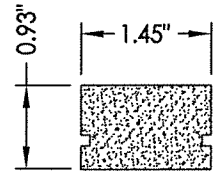
54 LOCK STILE
(FIBER-CLASSIC)



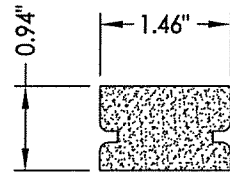
3 LATCH STILE
(SMOOTH-STAR)



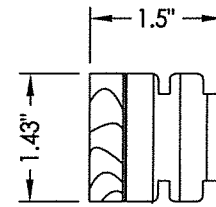
2 DOOR TOP RAIL
(SMOOTH-STAR)



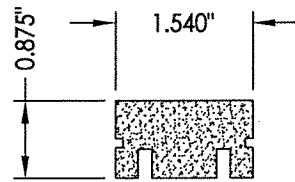
50 DOOR TOP RAIL
(FIBER-CLASSIC)



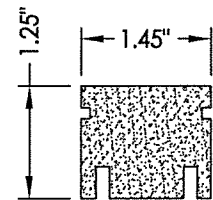
46 DOOR TOP RAIL
(CLASSIC-CRAFT
& RUSTIC)



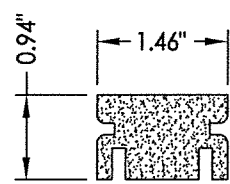
49 HINGE STILE
(CLASSIC-CRAFT
& RUSTIC)



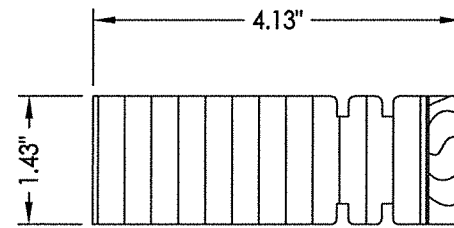
5 BOTTOM RAIL DOOR
(SMOOTH-STAR)



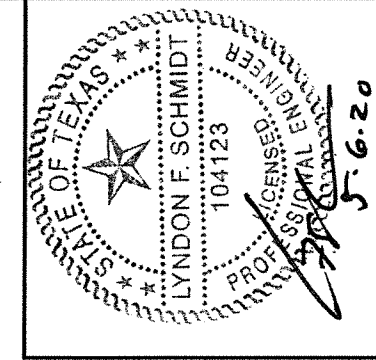
51 DOOR BOTTOM RAIL
(FIBER-CLASSIC)



47 DOOR BOTTOM RAIL
(CLASSIC-CRAFT
& RUSTIC)



48 LATCH STILE
(CLASSIC-CRAFT
& RUSTIC)



Documents Prepared By: Lyndon F. Schmidt, P.E.
TEXAS P.E. #104123

RW BUILDING CONSULTANTS, INC.
P.O. Box 230 Vairico FL 33595
Phone No.: 813.659.9197

TEXAS BOARD OF PROFESSIONAL ENGINEERS
CERTIFICATE OF REGISTRATION # F-11852

PRODUCT: THERMA-TRU
GLAZED FIBERGLASS DOOR
IN/OUTSWING "IMPACT"

PART OR ASSEMBLY:
COMPONENTS

NO.	DATE	REVISIONS
2	5/06/20	UPDATE TO 2018 IBC/IRC CODE
1	7/22/15	ADDED GENERAL NOTE 5.
		LFS
		BY

DATE: 7/17/12

SCALE: N.T.S.

DWG. BY: JK

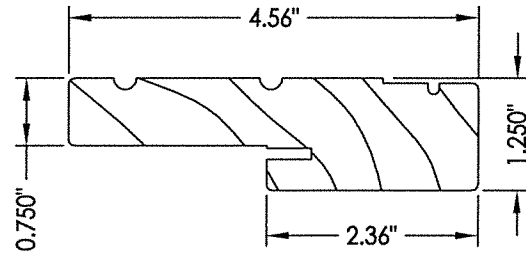
CHK. BY: LFS

DRAWING NO.:

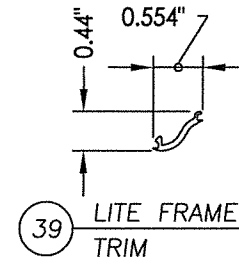
TX-4195

SHEET 8 OF 9

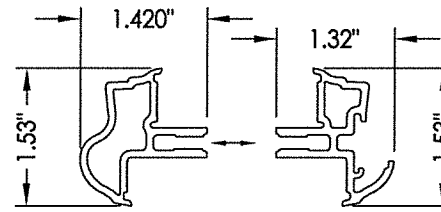
Item	DESCRIPTION	Material
1	DOOR SKIN; SMOOTH-STAR SERIES (.075" MIN.)	FIBERGLASS
1A	DOOR SKIN; CLASSIC-CRAFT & RUSTIC SERIES (0.090" MIN.)	FIBERGLASS
1B	DOOR SKIN; FIBER-CLASSIC SERIES (.065" MIN.)	FIBERGLASS
2	TOP RAIL DOOR THERMA-TRU (SMOOTH-STAR)	COMP.
3	LATCH STILE DOOR THERMA-TRU (SMOOTH-STAR)	LVL
4	HINGE STILE / DOOR, STILE / SIDELITE THERMA-TRU (SMOOTH-STAR)	WOOD
5	BOTTOM RAIL DOOR THERMA-TRU (SMOOTH-STAR)	COMP.
6	POLYURETHANE FOAM (1.9lbs. DENSITY)	FOAM
7	MEDIUM REACH COMPRESSION WEATHER-STRIP (THERMA-TRU)	FOAM
8	LONG REACH COMPRESSION WEATHER-STRIP (THERMA-TRU)	FOAM
9	4" x 4" HINGE .097" THK. (THERMA-TRU)	STEEL
10	#10 x 3/4" PFH WOOD SCREW (Hinge to Frame)	STEEL
12	#10 x 2" PFH WOOD SCREW	STEEL
13	#10 x 2-1/2" PFH WOOD SCREW	STEEL
14	2X FRAMING (G>= 0.42)	WOOD
16	MAX. 1/4" SHIM MATERIAL	WOOD
17	LOCK - KWIKSET 200 SERIES	STEEL
18	THRESHOLD OUTSWING (THERMA-TRU)	ALUM./WOOD
19	HEADER JAMB (4.656" x 1.25" THERMA-TRU, PINE)	WOOD
20	SIDE JAMB (4.656" x 1.25" THERMA-TRU) (FJ PINE)	WOOD
21	DEADBOLT - KWIKSET 780 SERIES	STEEL
22	INTERIOR LITE FRAME	ALUM.
23	EXTERIOR LITE FRAME	ALUM.
25	SILICONE CAULK	SILICONE
26	CELLULAR GLAZING TAPE	FOAM
27	LATCH STRIKE	STEEL
28	#8 x 2-1/2" PFH WOOD SCREW	STEEL
29	#8 x 3" PFH SCREW	STEEL
30	1" THK. INSUL. LAMINATED GLASS (SAFLEX PVB INTERLAYER) / 1/8" TEMP.- AIR - 5/32" ANN. / 0.090" SAFLEX PVB / 1/8" ANN.	GLASS
31	OUTSWING THRESHOLD COASTAL	ALUM./WOOD
32	DOOR BOTTOM SWEEP (INSWING)	PVC
32A	DOOR BOTTOM SWEEP (INSWING)	PVC
33	INSWING THRESHOLD HPA	ALUM./COMP.
35	1/4" ELCO OR ITW CONCRETE SCREW (1-3/4" MIN. EMB.)	STEEL
39	LITE FRAME TRIM	ALUM.
40	#9 x 3" PFH WOOD SCREW	STEEL
46	TOP RAIL (CLASSIC-CRAFT & RUSTIC)	COMP.
47	BOTTOM RAIL (CLASSIC-CRAFT & RUSTIC)	COMP.
48	LATCH SIDE STILE (CLASSIC-CRAFT & RUSTIC)	LSL / OAK
49	HINGE SIDE STILE (CLASSIC-CRAFT & RUSTIC)	LSL / OAK
50	TOP RAIL (FIBER-CLASSIC)	COMP.
51	BOTTOM RAIL (FIBER-CLASSIC)	COMP.
52	HINGE SIDE STILE (FIBER-CLASSIC)	WOOD
54	LATCH SIDE STILE (FIBER-CLASSIC)	LVL / OAK
65	INSWING THRESHOLD SELF ADJUSTING	ALUM./COMP.
66	INSWING THRESHOLD IMPERIAL	ALUM./COMP.
67	DEAD BOLT STRIKE PLATE	STEEL



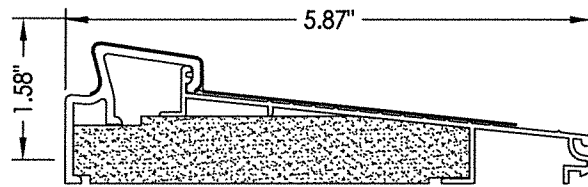
19 20 HEAD & SIDE JAMB



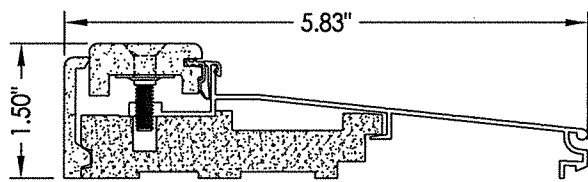
39 LITE FRAME TRIM



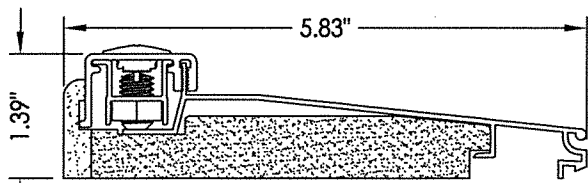
23 EXT. LITE FRAME 22 INT. LITE FRAME



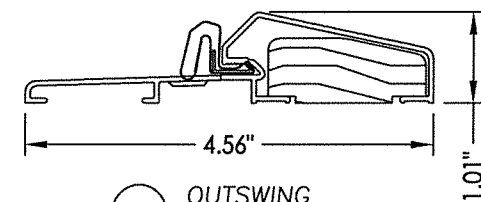
65 INSWING SELF ADJUST THRESHOLD



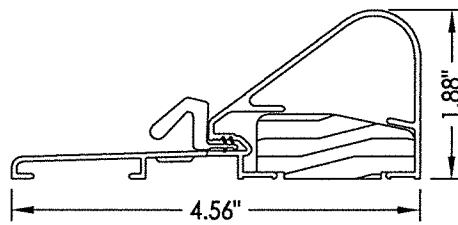
66 INSWING IMPERIAL THRESHOLD



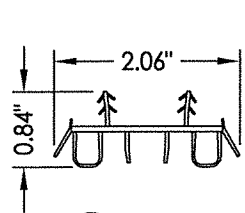
33 INSWING HPA THRESHOLD



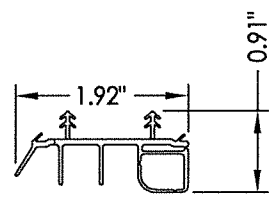
18 OUTSWING THRESHOLD



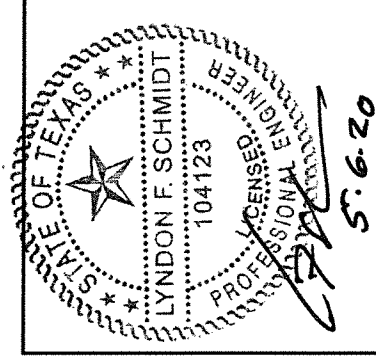
31 OUTSWING COASTAL THRESHOLD



32A SWEEP



32 SWEEP



Documents Prepared By: Lyndon F. Schmidt, P.E.
TEXAS P.E. #104123

RW BUILDING CONSULTANTS, INC.
P.O. Box 230 Valrico FL 33595
Phone No.: 813.659.9197

TEXAS BOARD OF PROFESSIONAL ENGINEERS
CERTIFICATE OF REGISTRATION # F-11852

PRODUCT: THERMA-TRU GLAZED FIBERGLASS DOOR IN/OUTSWING "IMPACT"

PART OR ASSEMBLY: BILL OF MATERIAL & COMPONENTS

NO.	DATE	REVISIONS
2	5/06/20	UPDATE TO 2018 IBC/IRC CODE
1	7/22/15	ADDED GENERAL NOTE 5.
		LFS
		BY

DATE: 7/17/12
SCALE: N.T.S.
DWG. BY: JK
CHK. BY: LFS
DRAWING NO.: TX-4195
SHEET 9 OF 9