

**GENERAL NOTES:**

- ALL FASTENERS SHALL BE IN ACCORDANCE WITH THESE DRAWINGS. SPECIFIED ANCHOR EMBED TO BASE MATERIAL SHALL BE BEYOND WALL FINISH OR STUCCO.
- OPENINGS, BUCKING & BUCKING FASTENERS MUST BE PROPERLY DESIGNED & INSTALLED TO TRANSFER WIND LOADS TO THE STRUCTURE.
- THESE IMPACT RATED PRODUCT INSTALLATIONS ARE IN ACCORDANCE WITH AND MEET THE REQUIREMENTS OF THE 2018 INTERNATIONAL BUILDING CODE (IBC).
- ALL ANCHORS SECURING PRODUCT FRAME TO PRESSURE TREATED BUCKS OR WOOD FRAMING SHALL BE CAPABLE OF RESISTING CORROSION CAUSED BY THE PRESSURE TREATING CHEMICALS IN THE WOOD.
- TO THE BEST OF OUR KNOWLEDGE, THE PRODUCT SHOWN HEREIN IS CERTIFIED & QUALITY ASSURED BY A NATIONALLY ACCREDITED CERTIFICATION/QA ENTITY & SHALL BE LABELED IN ACCORDANCE WITH CERTIFICATION/QA ENTITIES SPECIFICATIONS. PRODUCT ASSEMBLY IS NOT PART OF THIS DRAWING AND SHALL BE IN ACCORDANCE WITH THE MANUFACTURER'S QUALITY ASSURANCE SPECIFICATIONS & TESTING REPORTS.
- CERTIFICATION OF THESE PRODUCT INSTALLATIONS SHALL BE CONSIDERED VOID IF ANY OF THE FOLLOWING APPLY: 1) THEY ARE INSTALLED WITHOUT A BUILDING PERMIT FROM THE APPLICABLE LOCAL BUILDING DEPARTMENT. 2) IF THEY ARE INSTALLED BY ANYONE OTHER THAN A LICENSED CONTRACTOR EXPERIENCED WITH WINDOW/DOOR INSTALLATIONS. 3) IF CHANGES HAVE OCCURRED TO THE PRODUCT'S CERTIFICATION ENTITY'S CERTIFICATE THAT CAUSE THESE INSTALLATIONS TO BE INCORRECT OR INCONSISTENT WITH WHAT HAS BEEN TESTED.
- THE LEAST DESIGN PRESSURE SPECIFIED EITHER IN THIS DRAWING OR IN THE PRODUCTS CERTIFICATION SHALL CONTROL FOR THE INSTALLED PRODUCT.
- THESE DRAWINGS CERTIFY THE PRODUCT INSTALLATION ONLY. WATER PROOFING OF THE INSTALLED PRODUCT IS NOT PART OF THIS INSTALLATION CERTIFICATION. THAT RESPONSIBILITY SHALL BE THAT OF THE MANUFACTURER &/OR INSTALLER.

**HINGE REQUIREMENTS**

| MAX. FRAME HEIGHT | QUANTITY PER PANEL |
|-------------------|--------------------|
| 119.5"            | 6                  |
| 107.875"          | 5                  |
| 99.375"           | 4                  |
| 83.875"           | 3                  |

INSTALLATION EVALUATION IS BASED ON APPLICABLE ANCHOR STANDARDS AND/OR INFORMATION & RESULTS FROM APPLICABLE TEST REPORTS. THE BUILDING CODE VERSION CONSIDERED WITH THE EVALUATION WAS THAT IN FORCE AT THE TIME OF THE EVALUATION. IN THE EVENT OF CODE VERSION CHANGES/UPDATES OR IN THE EVENT THAT NEW OR ADDITIONAL TESTING IS COMPLETED ON THE REFERENCED PRODUCT, PRIOR TO STATING CODE COMPLIANCE, THE MANUFACTURER SHALL CONFIRM WITH THE INSTALLATION EVALUATION ENGINEER OF RECORD THAT THE INSTALLATIONS SPECIFIED HERE-IN ARE CURRENT WITH THE THEN CURRENT TESTING, CODE AND APPLICABLE STANDARDS.

**ANCHOR/SUBSTRATE EVALUATION NOTE:**  
ALL ANCHORS IN THEIR SPECIFIED SUBSTRATES HAVE BEEN ANALYZED IN ACCORDANCE WITH THEIR APPLICABLE STANDARD(S) AND ARE FOUND TO BE CAPABLE OF SUPPORTING ALL LOADS IMPOSED ON THEM UNDER THE GUIDELINES OF THIS DOCUMENT. ANY SUBSTRATES OR CONDITIONS OUTSIDE OF WHAT IS SHOWN HERE-IN SHALL BE SUBJECT TO JOB SPECIFIC ENGINEER'S REVIEW & CERTIFICATION.

CONDITIONS SHOWN ON THIS DRAWING ARE GOVERNED BY INSTALLATION REQUIREMENTS ONLY. THE GOVERNING CONDITIONS ON ANY SPECIFIC DOOR SHALL BE THE LESSER OF THOSE SPECIFIED IN THE DOORS STATE APPROVAL OR THAT SHOWN IN THESE DRAWINGS.

**INSTALLATION NOTE:**  
WHEN NECESSARY, INSTALLATION METHODS MAY BE MIXED WITH ANY ONE DOOR SUCH THAT INDIVIDUAL SIDES OF THE DOOR MAY USE ONE OR THE OTHER ANCHOR METHOD (EXAMPLE: LEFT SIDE MAY USE CLIP METHOD WHILE OTHER SIDES USE FRAME SCREWS)

EDGE DISTANCE MAY BE DECREASED TO 1/2" IF SCREWS ARE ANGLED 15 TO 20 DEGREES AWAY FROM THE EDGE.

THESE DRAWINGS ARE APPLICABLE ONLY TO THE PRODUCT SPECIFIED. THEY MAY NOT BE USED FOR THE ASSEMBLY AND/OR INSTALLATION OF ANY OTHER PRODUCT NOR MAY THEY BE USED FOR RATIONAL AND/OR LOCAL APPROVAL OF ANY PRODUCT NOT PRODUCED BY THE MANUFACTURER STATED ON THESE DRAWINGS.

|                      |                       |
|----------------------|-----------------------|
| DRAWN BY:<br>W.W.S.  | CHECKED BY:<br>W.W.S. |
| PLOT:<br>1=24        | DATE:<br>06/08/21     |
| DATE                 |                       |
| BY                   |                       |
| REVISION DESCRIPTION |                       |
| NO.                  |                       |

PELLA CORPORATION  
102 MAIN STREET  
PELLA, IA 50219  
641-621-1000



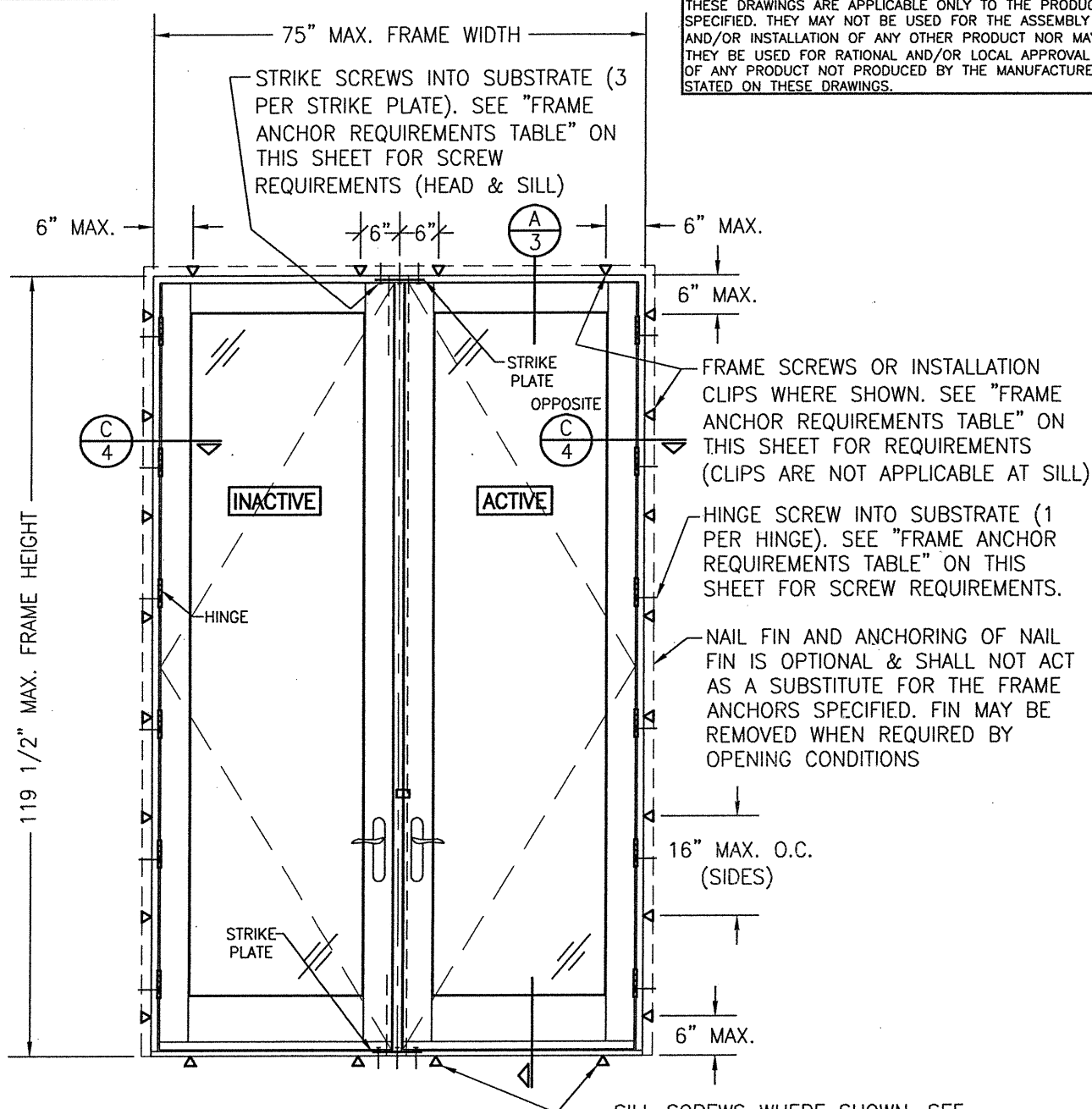
PELLA ARCHITECT OUT-SWING IMPACT ALUMINUM CLAD WOOD DOOR INSTALLATION REQUIREMENTS  
JOB INFORMATION:  
CONSULTANTS:  
W. W. SCHAEFER ENGINEERING & CONSULTING, P.A. (REG. NO. F-14980)  
7480 150TH COURT NORTH  
PALM BEACH GARDENS, FL 33418  
PHONE: 561-744-3424

CERTIFICATION  
WARREN W. SCHAEFER  
P.E. NO. 113497  
JUL 08 2021

|                      |         |
|----------------------|---------|
| DRAWING NO.<br>1730T | REV.    |
| SHEET NO.<br>1       | OF<br>4 |

**FRAME ANCHOR REQUIREMENTS TABLE**

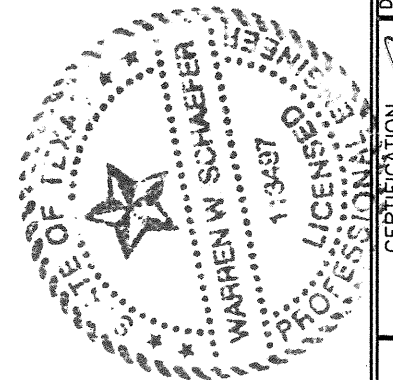
| OPENING TYPE (SUBSTRATE)                              | FRAME/CLIP TO OPENING FASTENER TYPE | MINIMUM EMBED | MINIMUM EDGE DIST. |
|---|-------------------------------------|---------------|--------------------|
| <b>FRAME/SILL SCREWS</b>                              |                                     |               |                    |
| (3) MIN. 2X6 WOOD FRAME OR BUCK (MIN. GR. 3 & G=0.55) | NO. 10 SMS OR WOOD SCREW            | 1 1/4"        | 3/4"               |
| MIN. 18 GA. 33 KSI METAL STUD                         | NO. 10 GR. 5 SELF TAP/DRILL SCREW   | FULL          | 1/2"               |
| MIN. 1/8" THK A36 STEEL                               | NO. 10 GR. 5 SELF TAP/DRILL SCREW   | FULL          | 1/2"               |
| MIN. 1/8" THK 6063-T5 ALUM.                           | NO. 10 GR. 5 SELF TAP/DRILL SCREW   | FULL          | 1/2"               |
| (2) MIN. C-90 CMU                                     | (1) 1/4" CONCRETE SCREW             | 1 1/4"        | 2"                 |
| MIN. 2500 PSI CONCRETE                                | (1) 1/4" CONCRETE SCREW             | 1 1/2"        | 2"                 |
| <b>HINGE SCREWS</b>                                   |                                     |               |                    |
| (3) MIN. 2X6 WOOD FRAME OR BUCK (MIN. GR. 3 & G=0.55) | NO. 12 SMS OR WOOD SCREW            | 1 1/4"        | 3/4"               |
| MIN. 18 GA. 33 KSI METAL STUD                         | NO. 12 GR. 5 SELF TAP/DRILL SCREW   | FULL          | 1/2"               |
| MIN. 1/8" THK A36 STEEL                               | NO. 12 GR. 5 SELF TAP/DRILL SCREW   | FULL          | 1/2"               |
| MIN. 1/8" THK 6063-T5 ALUM.                           | NO. 12 GR. 5 SELF TAP/DRILL SCREW   | FULL          | 1/2"               |
| MIN. C-90 CMU OR 2500 PSI CONCRETE                    | (1) 1/4" CONCRETE SCREW             | 1 1/4"        | 2"                 |
| <b>STRIKE SCREWS</b>                                  |                                     |               |                    |
| (3) MIN. 2X6 WOOD FRAME OR BUCK (MIN. GR. 3 & G=0.55) | NO. 8 SMS OR WOOD SCREW             | 1 1/4"        | 3/4"               |
| MIN. 18 GA. 33 KSI METAL STUD                         | NO. 8 GR. 5 SELF TAP/DRILL SCREW    | FULL          | 1/2"               |
| MIN. 1/8" THK A36 STEEL                               | NO. 8 GR. 5 SELF TAP/DRILL SCREW    | FULL          | 1/2"               |
| MIN. 1/8" THK 6063-T5 ALUM.                           | NO. 8 GR. 5 SELF TAP/DRILL SCREW    | FULL          | 1/2"               |
| (2) MIN. C-90 CMU                                     | (1) 3/16" CONCRETE SCREW            | 1 1/4"        | 2"                 |
| MIN. 2500 PSI CONCRETE                                | (1) 3/16" CONCRETE SCREW            | 1 1/2"        | 2"                 |
| <b>INSTALLATION CLIP SCREWS</b>                       |                                     |               |                    |
| MIN. 2X6 WOOD FRAME OR BUCK (MIN. GR. 3 & G=0.55)     | NO. 8 SMS SCREW                     | 1 3/8"        | 3/4"               |
| MIN. 18 GA. 33 KSI METAL STUD                         | NO. 8 GR. 5 SELF TAP/DRILL SCREW    | FULL          | 1/2"               |
| MIN. 1/8" THK A36 STEEL                               | NO. 8 GR. 5 SELF TAP/DRILL SCREW    | FULL          | 1/2"               |
| MIN. 1/8" THK 6063-T5 ALUM.                           | NO. 8 GR. 5 SELF TAP/DRILL SCREW    | FULL          | 1/2"               |



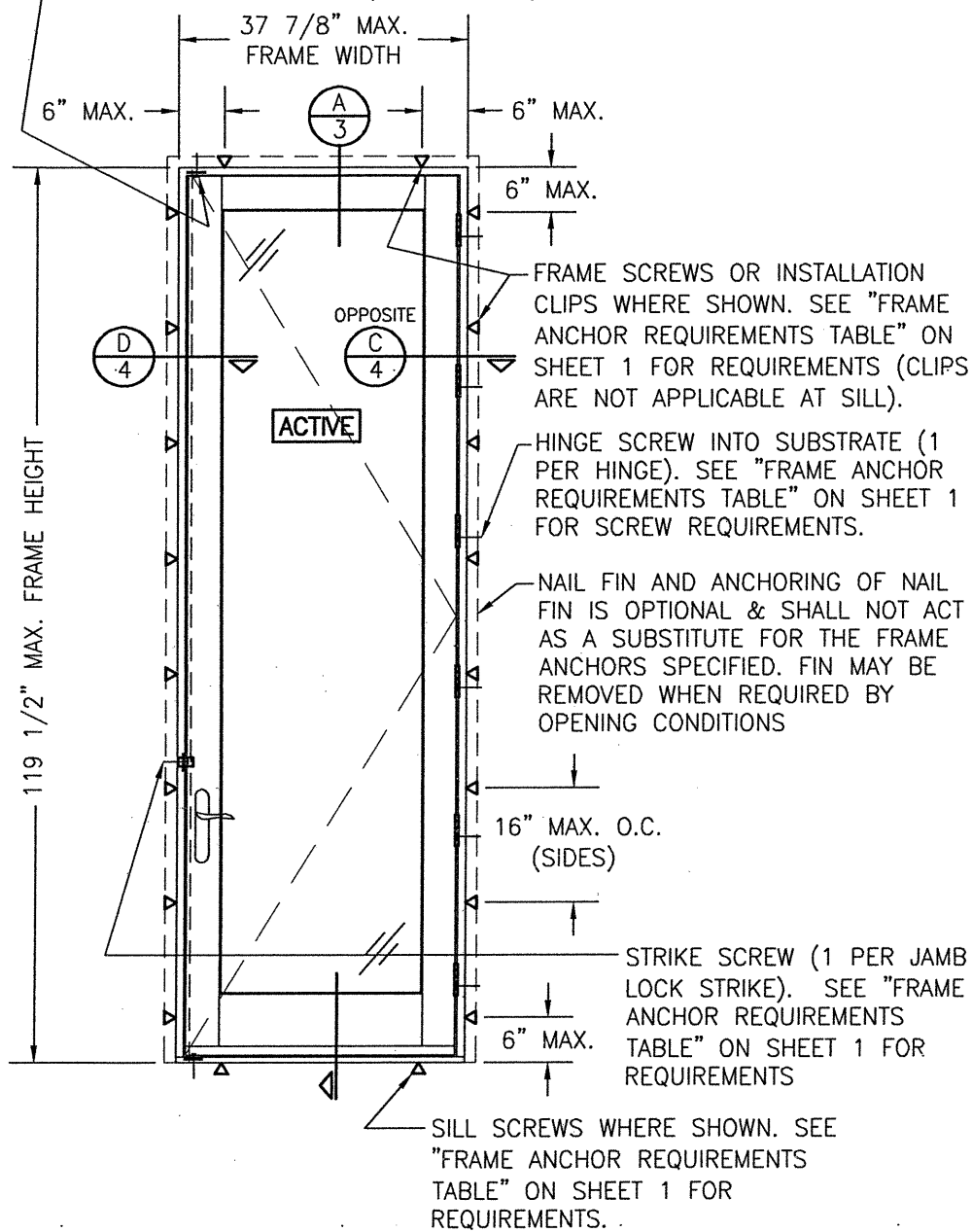
**EXTERIOR ELEVATION:  
DOUBLE RECTANGULAR DOOR**  
SCALE: 1/2" = 1'-0"

**ALLOWABLE DESIGN PRESSURE (DOUBLE SWING DOORS)**

| MAX. FRAME HEIGHT (IN.) | ALLOWABLE PRESSURE |                |
|-------------------------|--------------------|----------------|
|                         | POSITIVE (PSF)     | NEGATIVE (PSF) |
| 119 1/2                 | 50                 | 50             |
| 95 1/2                  | 70                 | 70             |



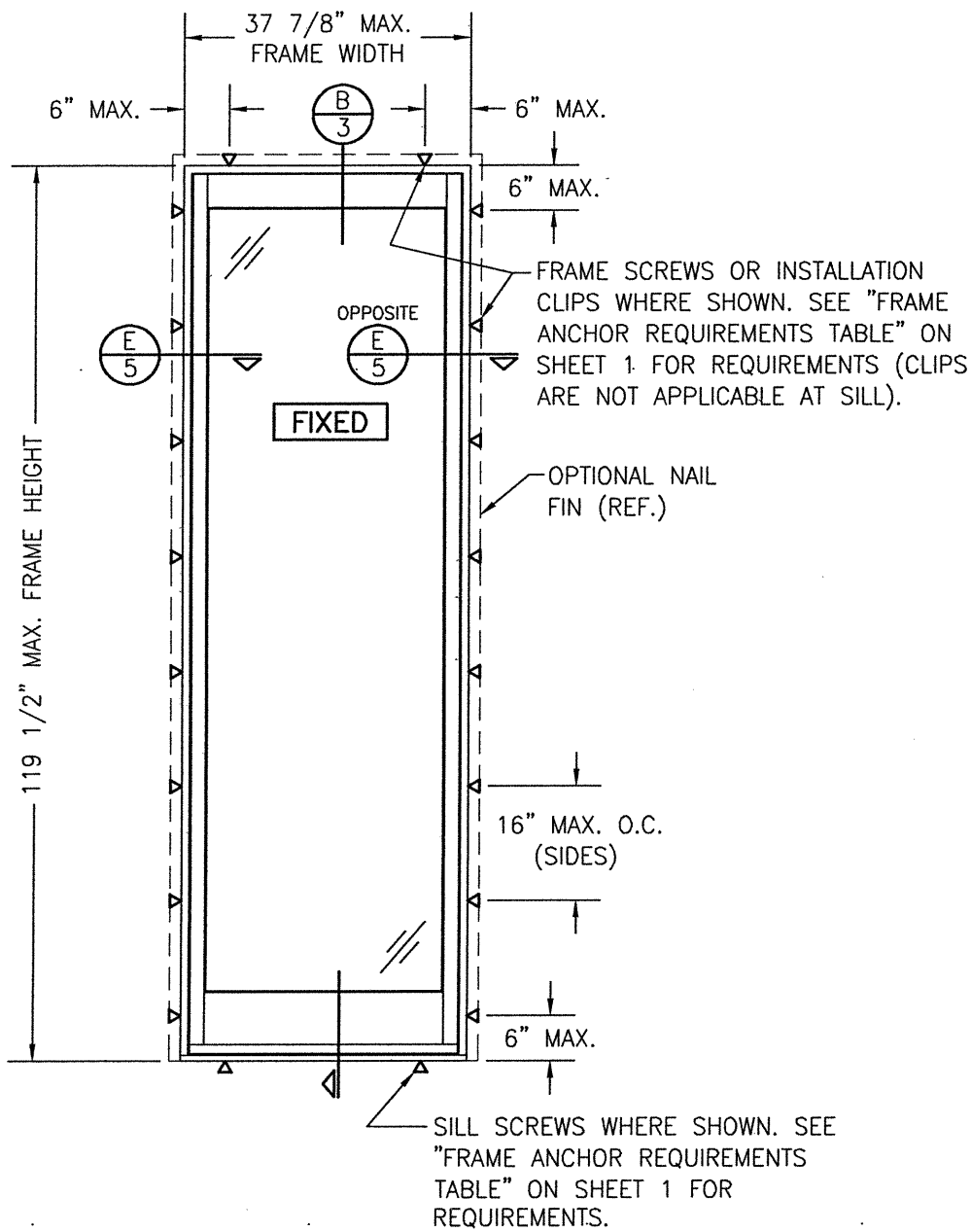
STRIKE SCREW INTO SUBSTRATE (1 PER STRIKE PLATE). SEE "FRAME ANCHOR REQUIREMENTS TABLE" ON SHEET 1 FOR SCREW REQUIREMENTS (HEAD & SILL)



**EXTERIOR ELEVATION:  
SINGLE RECTANGULAR DOOR**

SCALE: 1/2" = 1'-0"

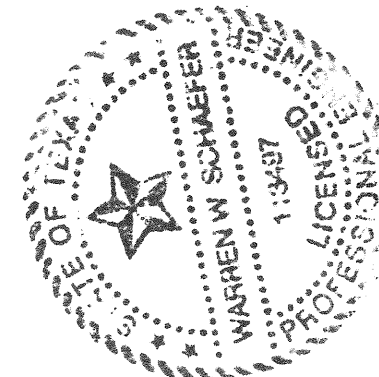
| ALLOWABLE DESIGN PRESSURE<br>(SINGLE SWING DOORS) |                    |                |
|---|--------------------|----------------|
| MAX. FRAME HEIGHT (IN.)                           | ALLOWABLE PRESSURE |                |
|   | POSITIVE (PSF)     | NEGATIVE (PSF) |
| 119 1/2   | 50                 | 50             |
| 95 1/2  | 70                 | 70             |



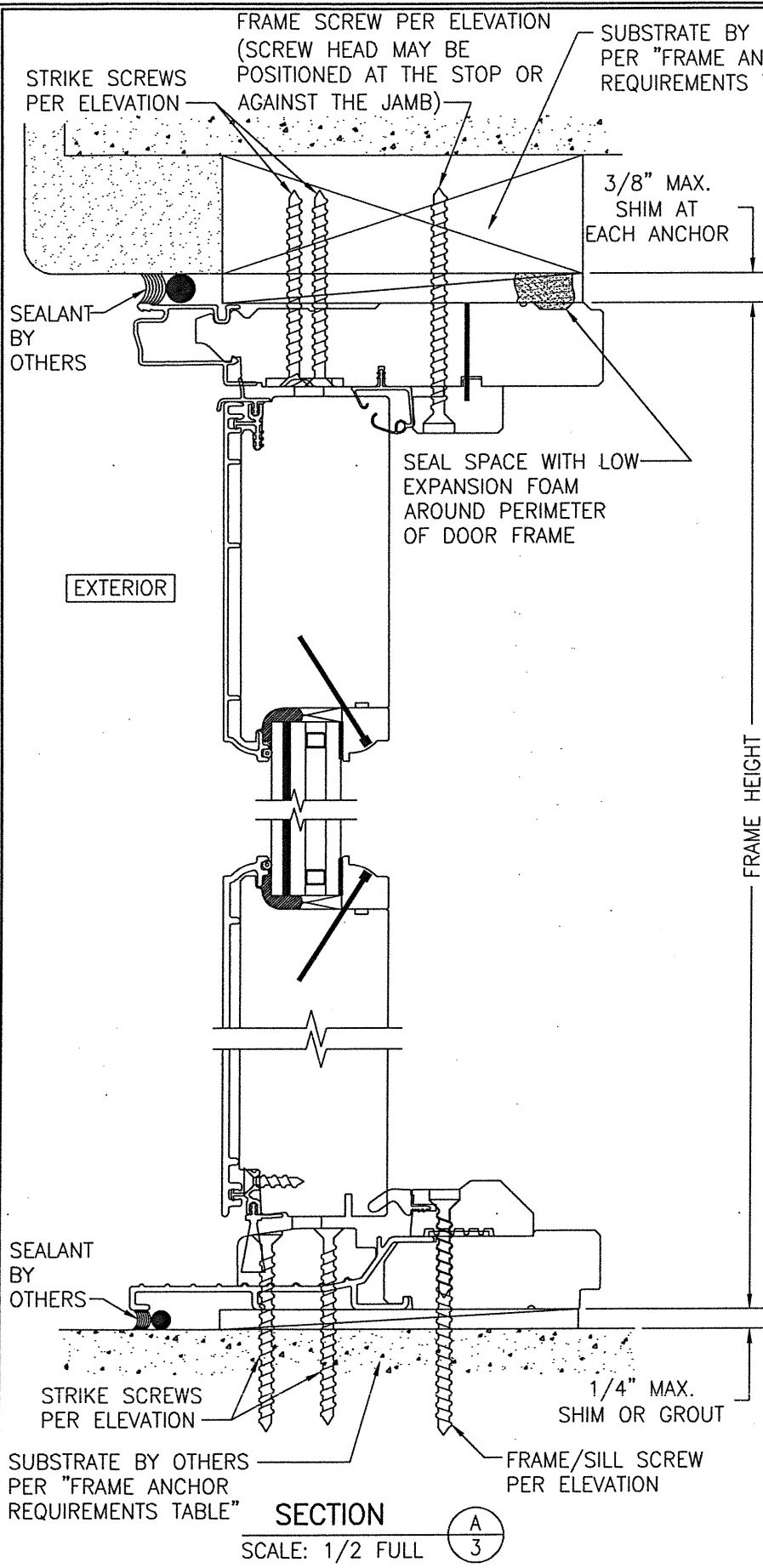
**EXTERIOR ELEVATION  
SINGLE FIXED PANEL**

SCALE: 1/2" = 1'-0"

| ALLOWABLE DESIGN PRESSURE<br>(FIXED PANEL DOOR) |                    |                |
|---|--------------------|----------------|
| MAX. FRAME HEIGHT (IN.)                         | ALLOWABLE PRESSURE |                |
|   | POSITIVE (PSF)     | NEGATIVE (PSF) |
| 119 1/2   | 50                 | 50             |
| 95 1/2  | 70                 | 70             |

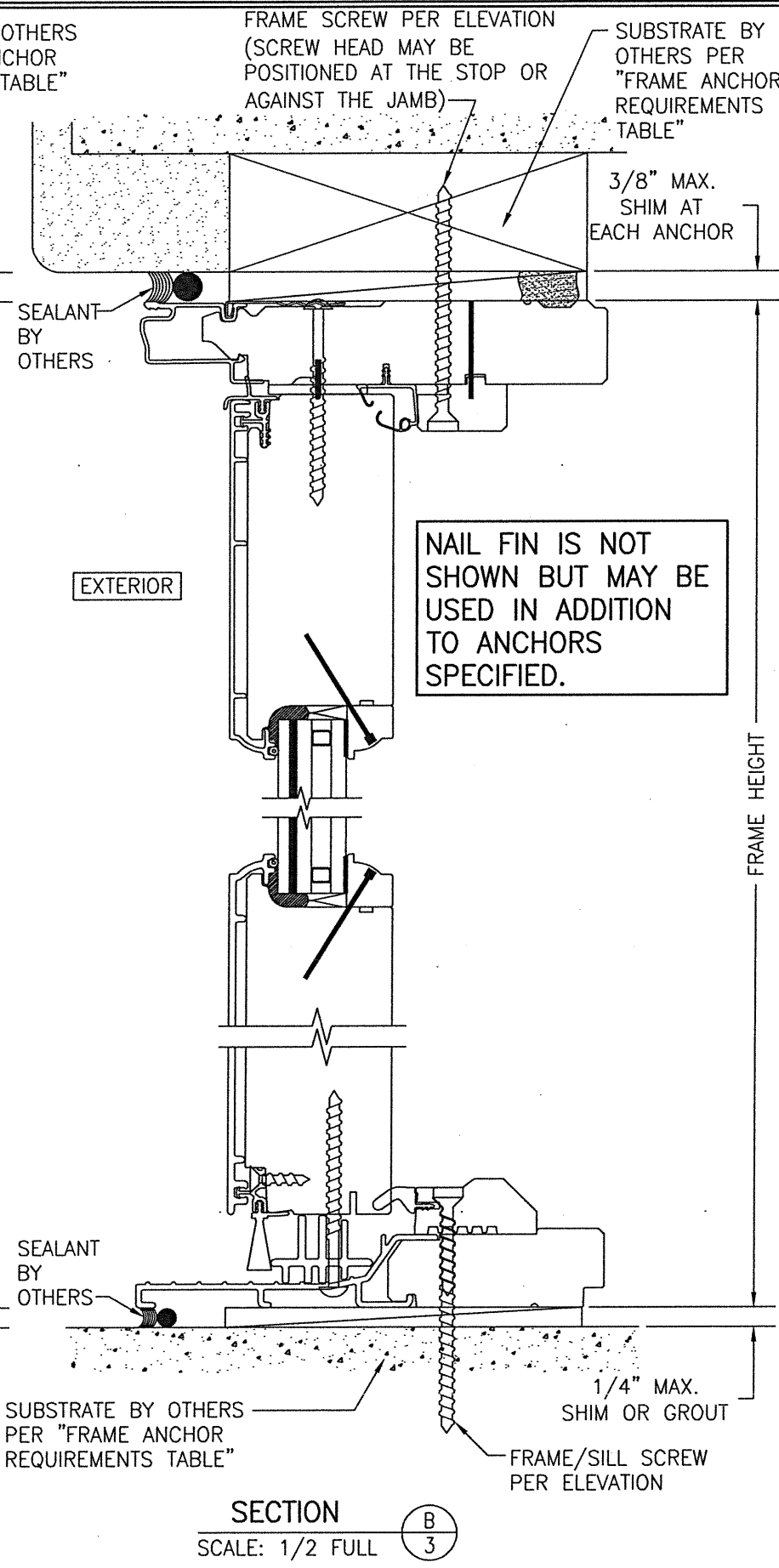


|   |   |
|---|---|
| DRAWN BY:<br>W.W.S.   | CHECKED BY:<br>W.W.S.                       |
| PLOT:<br>1=24   | DATE:<br>06/08/21                           |
| DATE  | BY  |
| REVISION DESCRIPTION  | NO.   |
| DRAWING TITLE: PELLA ARCHITECT OUT-SWING IMPACT ALUMINUM CLAD WOOD DOOR INSTALLATION REQUIREMENTS   |   |
| JOB INFORMATION:<br>PELLA CORPORATION<br>102 MAIN STREET<br>PELLA, IA 50219<br>641-621-1000   |   |
| CONSULTANTS:<br>W. W. SCHAEFER ENGINEERING & CONSULTING, P.A. (REG. NO. F-14980)<br>7480 150TH COURT NORTH<br>PALM BEACH GARDENS, FL 33418<br>PHONE: 561-744-3424 |   |
| CERTIFICATION:<br>JUN 08 2021   | WARREN W. SCHAEFER, P.E.<br>P.E. NO. 113497 |
| DRAWING NO.<br>1730T  | REV.  |
| SHEET NO.<br>2 OF 4   |   |



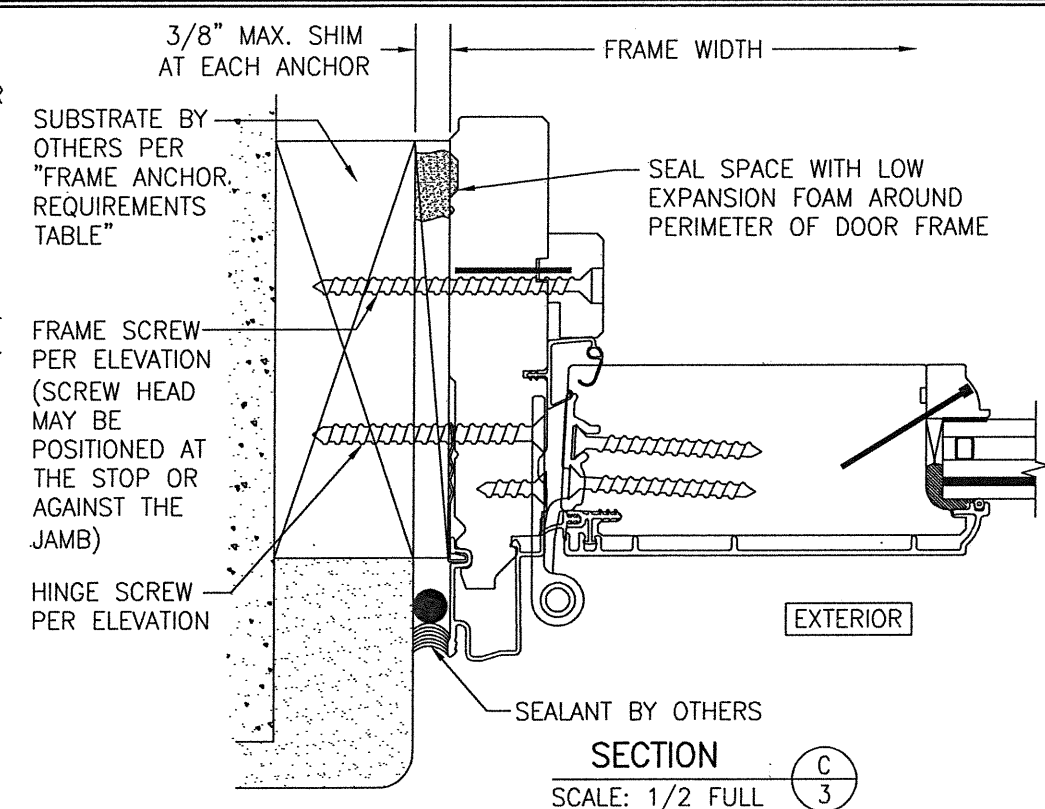
SECTION A  
SCALE: 1/2 FULL

FRAME SCREW MOUNT SHOWN. SEE DETAILS ON SHEET 4 FOR DIRECT MOUNT & CLIP MOUNT DETAILS.



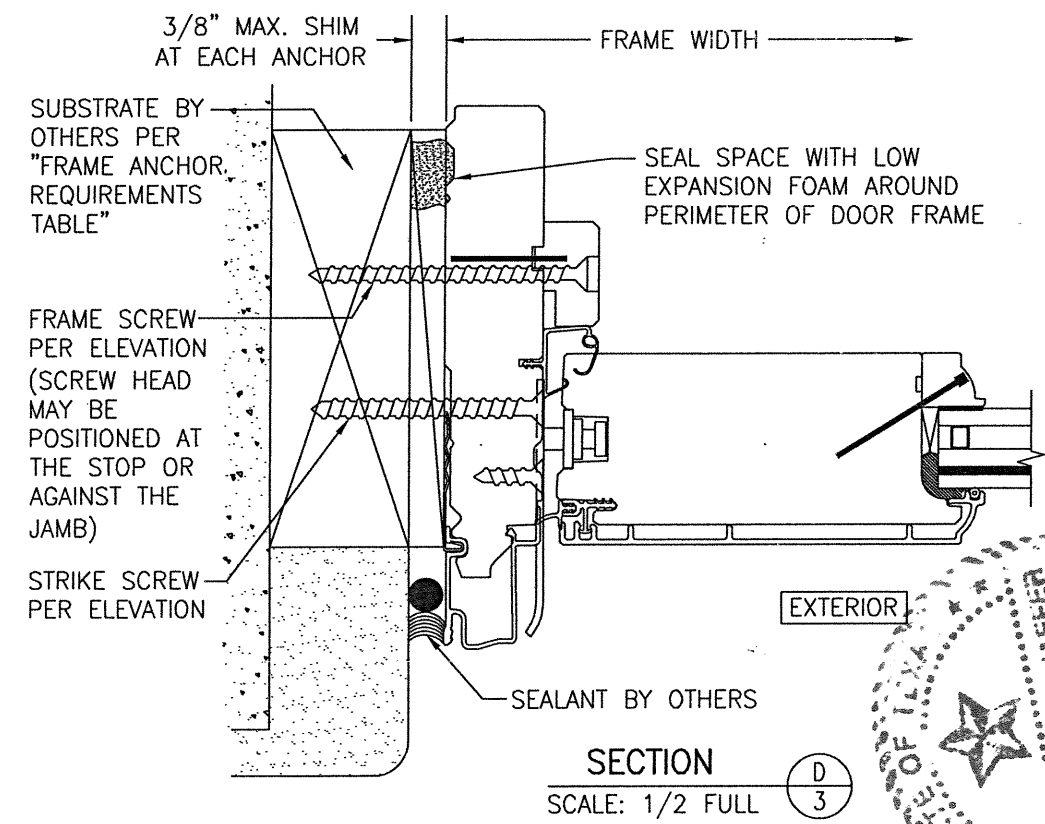
SECTION B  
SCALE: 1/2 FULL

FRAME SCREW MOUNT SHOWN. SEE DETAILS ON SHEET 4 FOR DIRECT MOUNT & CLIP MOUNT DETAILS.



SECTION C  
SCALE: 1/2 FULL

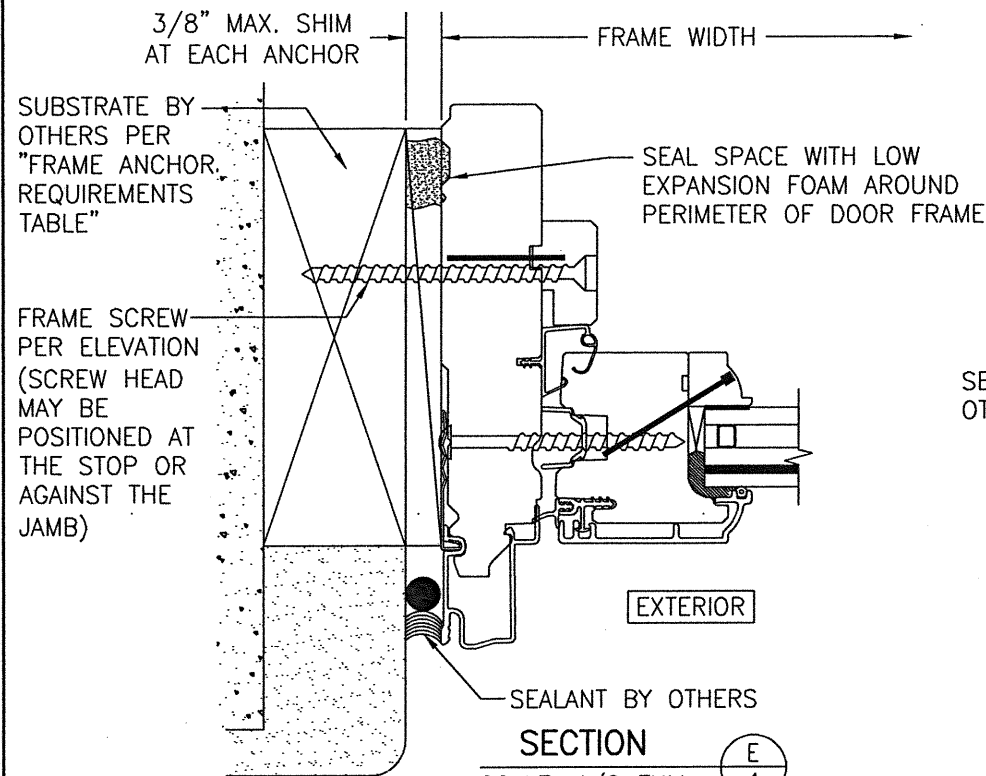
FRAME SCREW MOUNT SHOWN. SEE DETAILS ON SHEET 4 FOR DIRECT MOUNT & CLIP MOUNT DETAILS.



SECTION D  
SCALE: 1/2 FULL

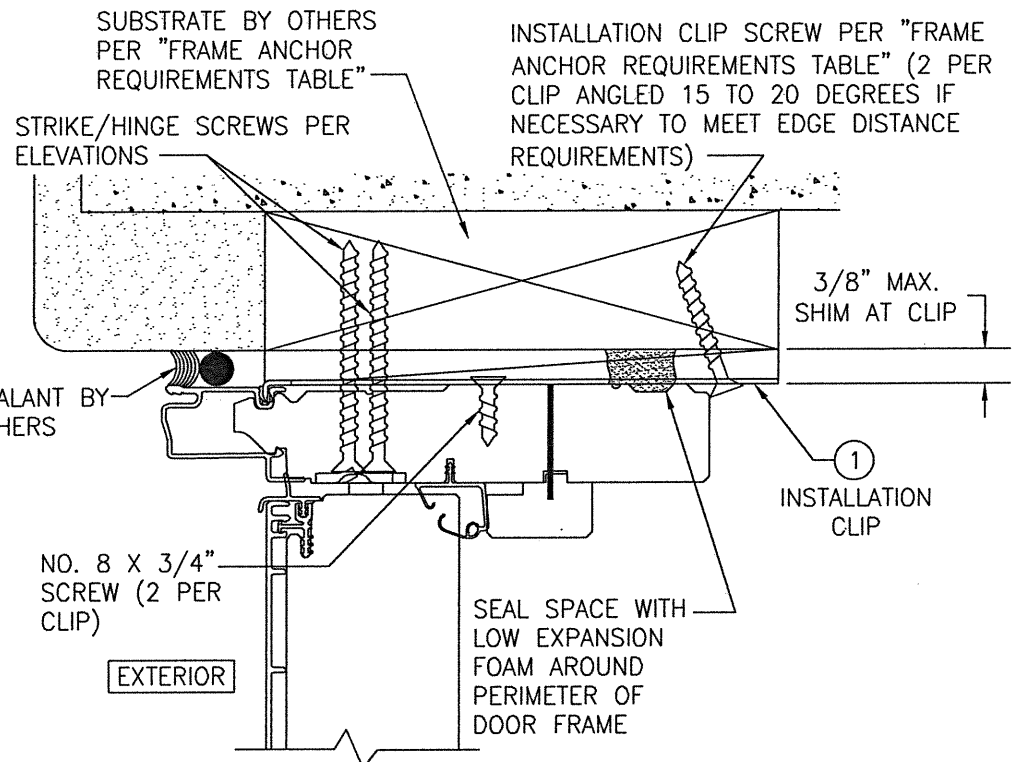
FRAME SCREW MOUNT SHOWN. SEE DETAILS ON SHEET 4 FOR DIRECT MOUNT & CLIP MOUNT DETAILS.

|   |                       |
|---|-----------------------|
| DRAWN BY:<br>W.W.S.   | CHECKED BY:<br>W.W.S. |
| PLLOT:<br>1=2   | DATE:<br>06/08/21     |
| DATE  |                       |
| BY  |                       |
| NO.   |                       |
| REVISION DESCRIPTION  |                       |
| DRAWING TITLE: PELLA ARCHITECT OUT-SWING IMPACT ALUMINUM CLAD WOOD DOOR INSTALLATION REQUIREMENTS<br>JOB INFORMATION:<br>CONSULTANTS:<br>W. W. SCHAEFER ENGINEERING & CONSULTING, P.A. (REG. NO. F-14980)<br>7480 150TH COURT NORTH, 33418<br>PALM BEACH GARDENS, FL<br>PHONE: 561-744-3424 |                       |
| PELLA CORPORATION<br>102 MAIN STREET<br>PELLA, IA 50219<br>641-621-1000   |                       |
| PROFESSIONAL SEAL<br>WARREN W. SCHAEFER, P.E.<br>P.E. NO. 113497  |                       |
| DRAWING NO.   | REV.                  |
| 1730T   |                       |
| SHEET NO.   | OF                    |
| 3   | 4                     |



SECTION E  
SCALE: 1/2 FULL

FRAME SCREW MOUNT SHOWN. SEE DETAILS ON THIS SHEET FOR DIRECT MOUNT & CLIP MOUNT DETAILS.

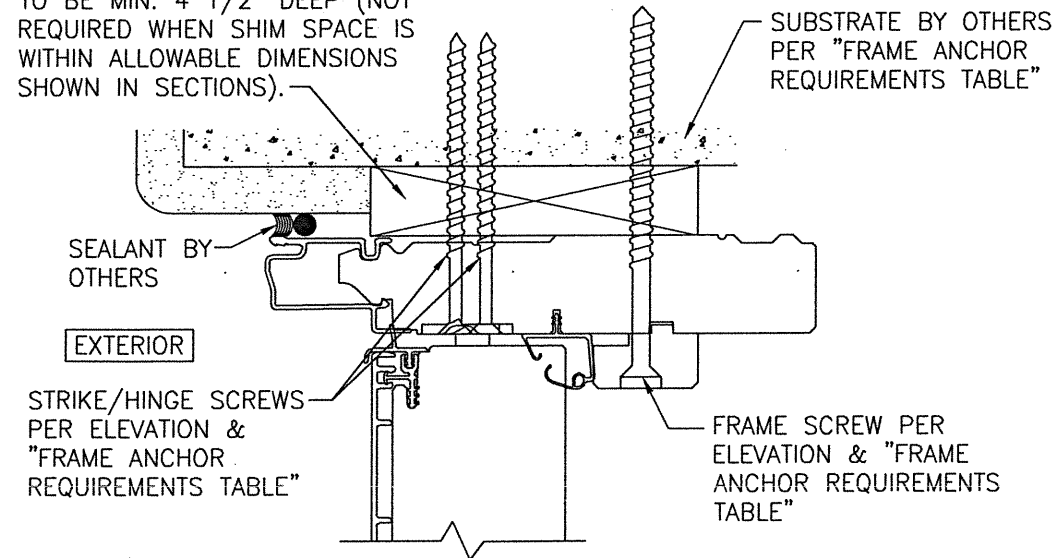


INSTALLATION CLIP DETAIL

CLIP INSTALL NOTES:

- 1) HEAD SECTION SHOWN. CLIP IS INSTALLED THE SAME AT THE SIDES.
- 2) INSTALLATION CLIP IS NOT APPLICABLE AT THE SILL.
- 3) FOR DETAIL NOT SHOWN, SEE OTHER SECTIONS.

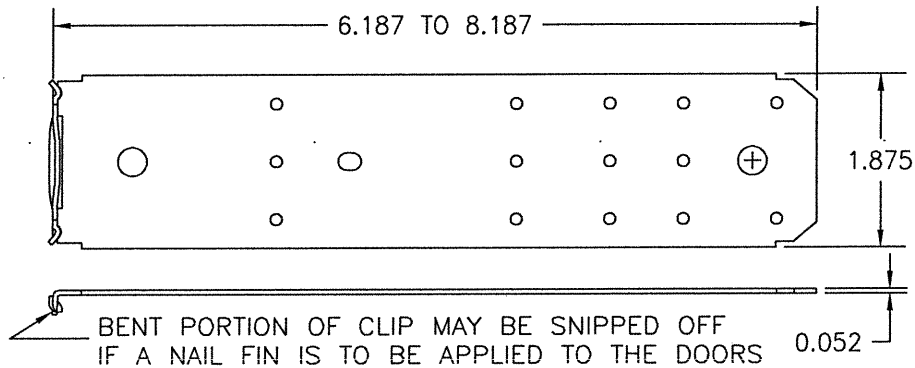
CONTINUOUS WOOD MEMBER LESS IN THICKNESS THAN A 2X BUCK TO BE MIN. 4 1/2" DEEP (NOT REQUIRED WHEN SHIM SPACE IS WITHIN ALLOWABLE DIMENSIONS SHOWN IN SECTIONS).



OPTIONAL DIRECT MOUNT DETAIL TO SUBSTRATE WITH SPACER

(HEAD SECTION SHOWN; SILL & SIDES ARE INSTALLED THE SAME)  
(FOR DETAIL NOT SHOWN, SEE OTHER SECTIONS)

NAIL FIN IS NOT SHOWN BUT MAY BE USED IN ADDITION TO ANCHORS SPECIFIED.



① FRAME INSTALLATION CLIP (50 KSI STEEL)

|   |                       |
|---|-----------------------|
| DRAWN BY:<br>W.W.S.   | CHECKED BY:<br>W.W.S. |
| PLOT:<br>1=2  | DATE:<br>06/08/21     |
| NO.   | REVISION DESCRIPTION  |
|   |                       |
|   |                       |
|   |                       |
|   |                       |
|   |                       |
| DRAWING TITLE: PELLA ARCHITECT OUT-SWING IMPACT ALUMINUM CLAD WOOD DOOR INSTALLATION REQUIREMENTS<br>CONSULTANTS: W. W. SCHAEFER ENGINEERING & CONSULTING, P.A. (REG. NO. F-14980)<br>7480 150TH COURT NORTH, PALM BEACH GARDENS, FL 33418<br>PHONE: 561-744-3424 |                       |
| JOB INFORMATION:<br><br>PELLA CORPORATION<br>102 MAIN STREET<br>PELLA, IA 50219<br>641-621-1000   |                       |
| PROFESSIONAL ENGINEER<br>WARREN W. SCHAEFER<br>P.E. NO. 11,3497<br>JUN 08 2021  |                       |
| DRAWING NO.<br>1730T  | REV.                  |
| SHEET NO.<br>4 OF 4   |                       |