

WINCORE™

WINDOWS & DOORS

250 Staunton Turnpike, Parkersburg, WV 26104

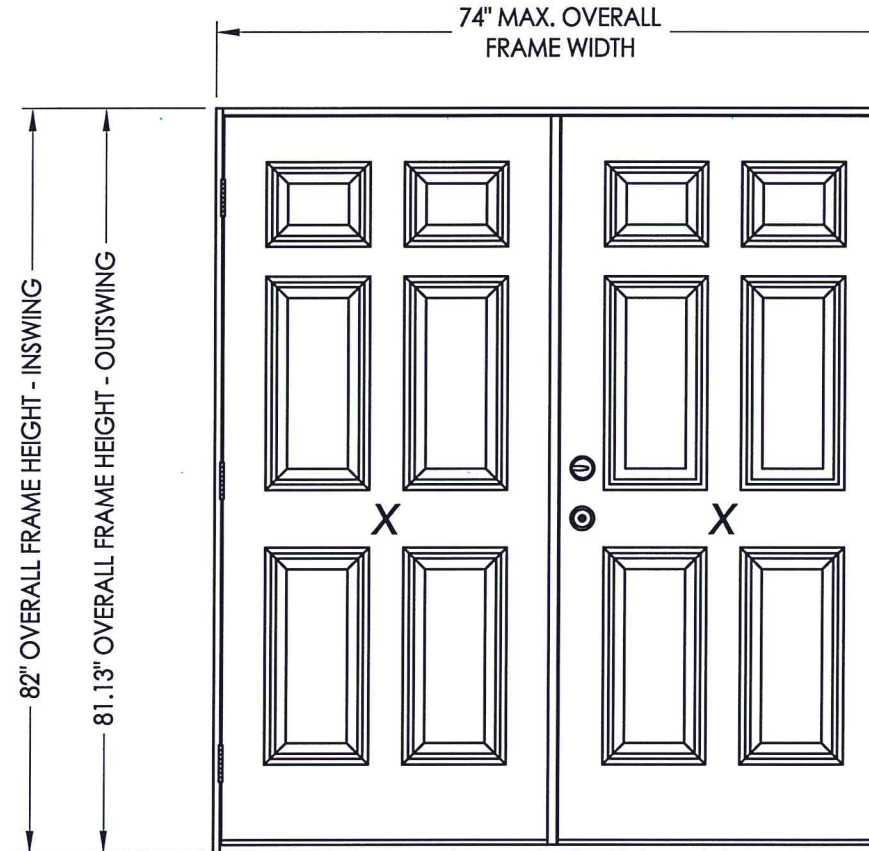
FIBERGLASS ENTRY DOOR IN SWING / OUT SWING "IMPACT"

EVALUATED FOR USE IN THE STATE OF TEXAS

The Wincore Fiberglass Door described herein complies with the 2018 International Residential Code (IRC), Sections R301 & R609 and the 2018 International Building Code (IBC), Sections 1404.13, 1609, 1709.5, 2403 and 2404 subject to the following conditions:

1. Anchors shall be as listed and spaced as shown in the details. Anchor embedment to base material shall be beyond wall dressing or stucco.
2. This system has been tested and evaluated as a large missile impact protective system for installation in the Seaward, Inland I and Inland II areas. This product meets missile level "D" as defined in ASTM E 1996.
3. Allowable design pressure requirements must be equal to or less than the design pressure rating shown in the design pressure chart, sheet 1 of this drawing.
4. Conditions not covered by this drawing are subject to further engineering analysis.

TABLE OF CONTENTS	
SHEET #	DESCRIPTION
1	Typical elevation, design pressures, & general notes
2	Door panel details
3	Horizontal cross section
4	Vertical cross sections
5	3-point lock details
6	3-point lock details
7	Frame anchoring
8	Astragal details
9	Bill of materials & components



CONFIGURATION	MAX. FRAME DIMENSION	DESIGN PRESSURE (PSF)	
		POSITIVE	NEGATIVE
XX	74" x 82"	+55.0	-55.0

See sheet 2 for hardware design pressure limitations



Documents Prepared By: Lyndon F. Schmidt, P.E.
TEXAS P.E. #104123

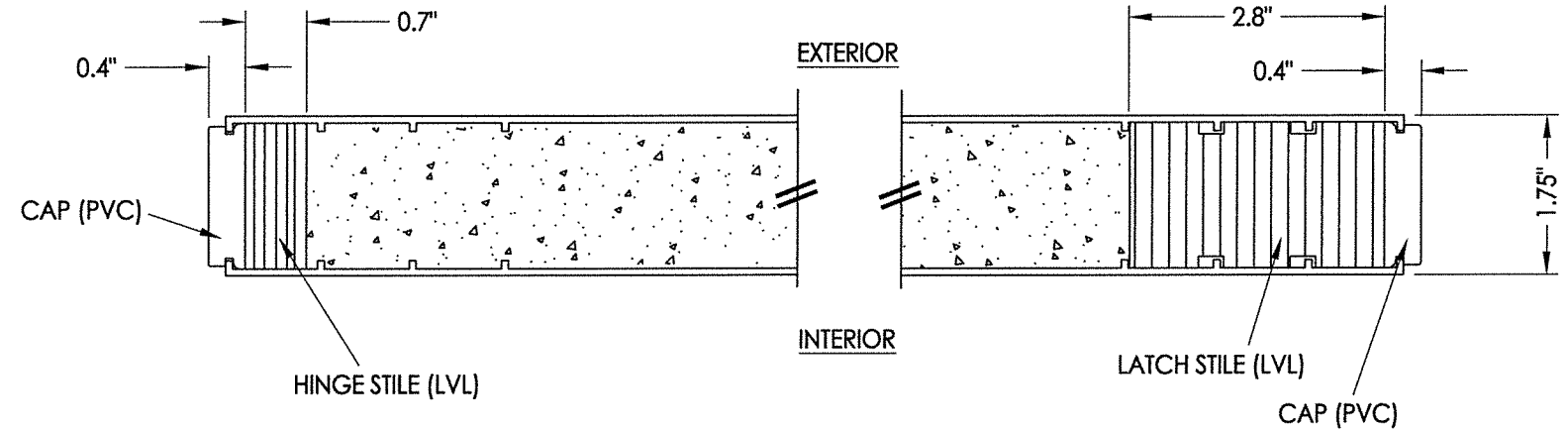
RW BUILDING CONSULTANTS, INC.
P.O. Box 230 Valrico FL 33595
Phone No.: 813.659.9197
TEXAS BOARD OF PROFESSIONAL ENGINEERS
CERTIFICATE OF REGISTRATION # F-11852

PRODUCT: WINCORE FIBERGLASS DOOR
PART OR ASSEMBLY:
TYPICAL ELEVATION, DESIGN PRESSURES & GENERAL NOTES

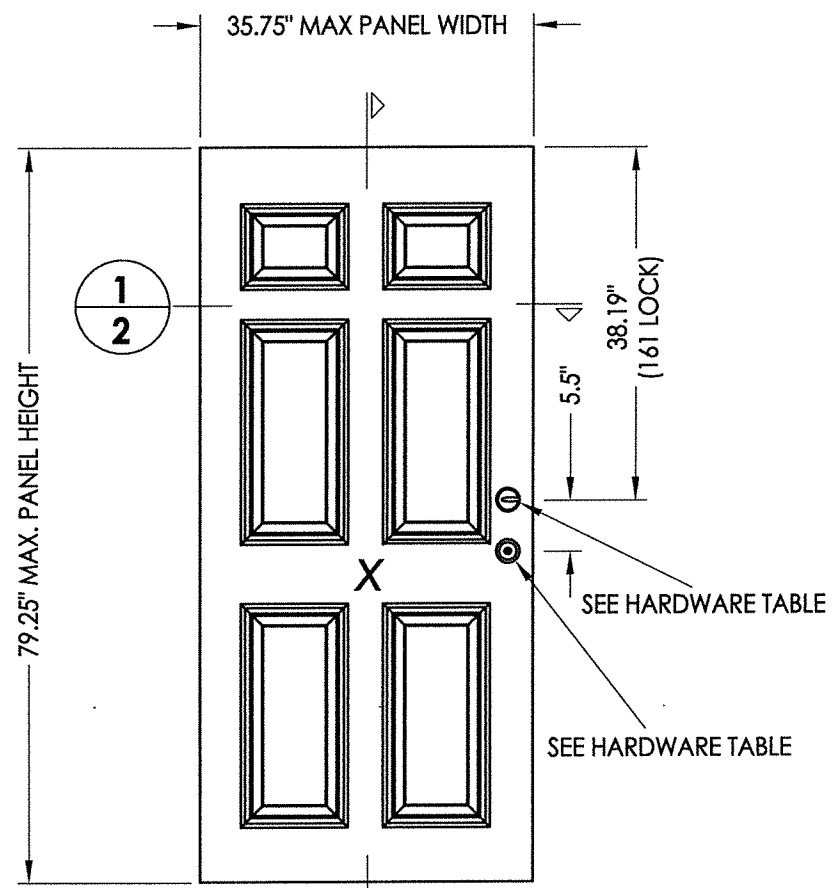
NO.	DATE	BY	REVISIONS
1	9/18/19	LFS	REMOVE OXO CONFIGURATION & UPDATE TO 2018 IBC

DATE: 05/30/12
SCALE: N.T.S.
DWG. BY: JK
CHK. BY: LFS
DRAWING NO.: TX-4160
SHEET 1 OF 9

R:\Clients\Wincore PERMANENT\B - Texas Dept of Ins\Doors\DR-555 - Opaque FG Entry Doors\C - Drawings\RWBC Drawings\TX-4160 REV.dwg, 2.3



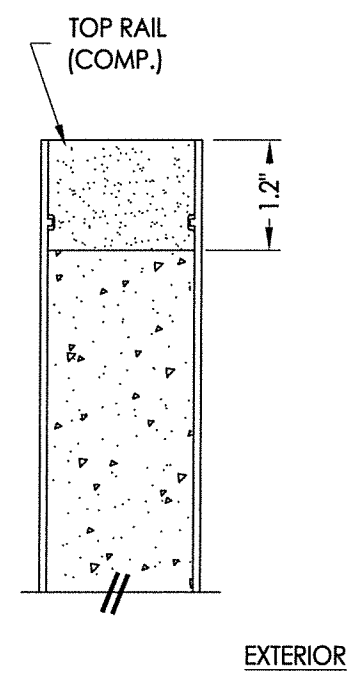
1
2 **HORIZONTAL CROSS SECTION**



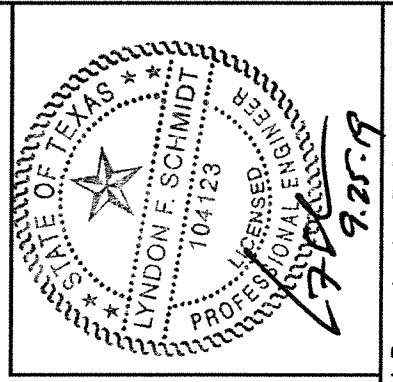
2
2
40 DOOR PANEL
Plastpro
Fiberglass

HARDWARE TABLE			
MANUFACTURER	MODEL		MAX. DESIGN PRESSURE (PSF)
KWIKSET	KNOB:	SIGNATURE SERIES	± 55
	DEADBOLT:	SIGNATURE SERIES (980)	
SCHLAGE	KNOB:	"F" SERIES (F51)	± 55
	DEADBOLT:	"B" SERIES (B60/62)	
PAMEX	LEVER:	FL3B SERIES	± 55
	DEADBOLT:	FD7 SERIES	
HOPPE	MULTI-POINT LOCK:	3-POINT TONGUE	± 50
W & F	MULTI-POINT LOCK:	TRILENNIUM "3000" SERIES	± 55

See sheets 5 and 6 for multi-point lock details.



2
2 **VERTICAL CROSS SECTION**



Documents Prepared By: Lyndon F. Schmidt, P.E.
TEXAS P.E. #104123

RW BUILDING CONSULTANTS, INC.
P.O. Box 230 Vairico FL 33595
Phone No.: 813.659.9197

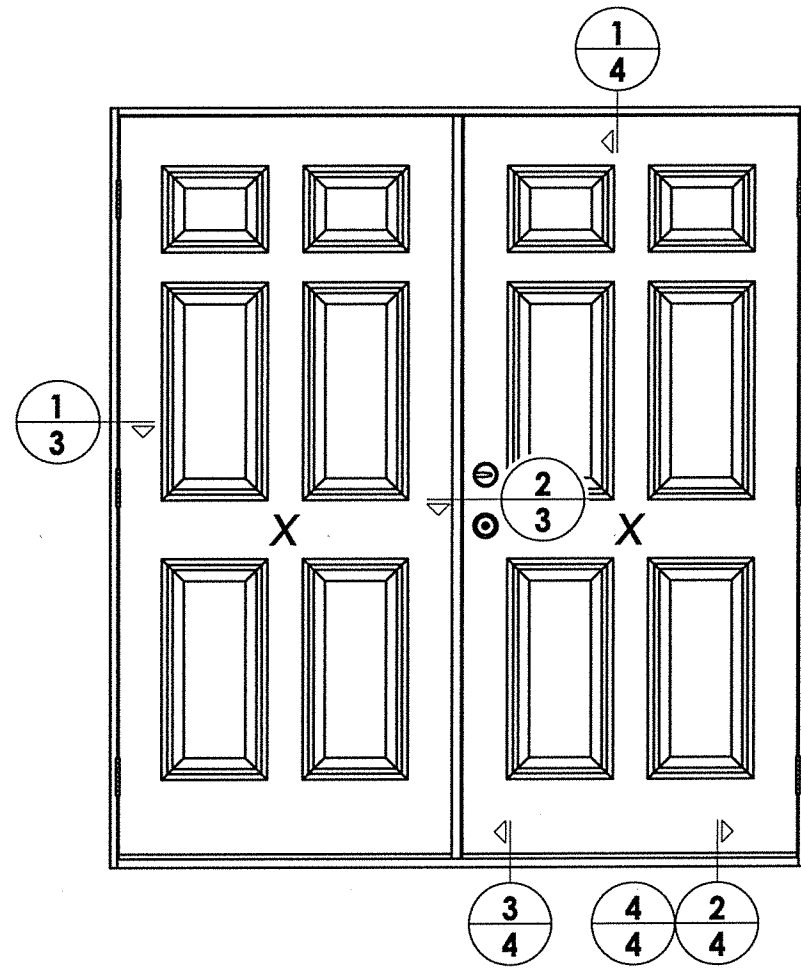
TEXAS BOARD OF PROFESSIONAL ENGINEERS
CERTIFICATE OF REGISTRATION # F-11852

PRODUCT: WINCORE FIBERGLASS DOOR

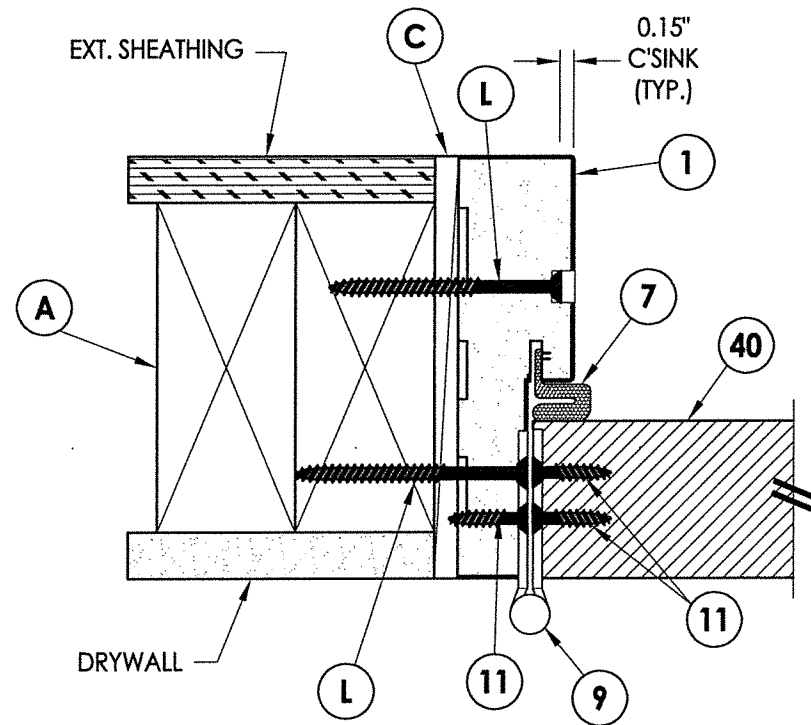
PART OR ASSEMBLY: DOOR PANEL DETAILS

NO.	DATE	REVISIONS
1	9/18/19	REMOVE OXO CONFIGURATION & UPDATE TO 2018 IBC

DATE: 05/30/12
SCALE: N.T.S.
DWG. BY: JK
CHK. BY: LFS
DRAWING NO.: TX-4160
SHEET 2 OF 9



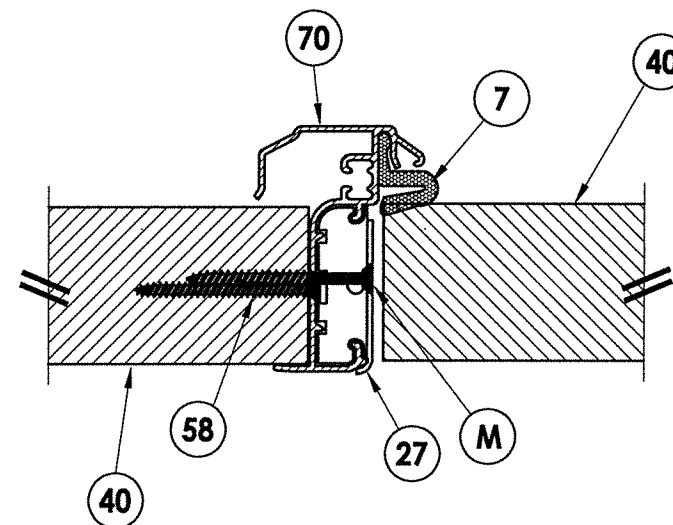
ELEVATION (XX)



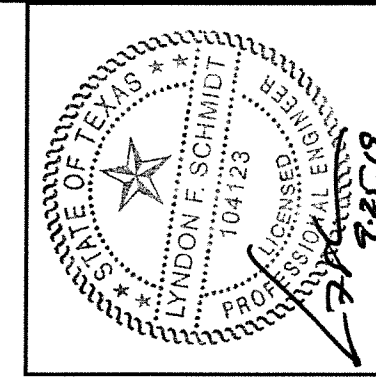
1 HORIZONTAL CROSS SECTION
3 Inswing shown - outswing also approved

EXTERIOR

INTERIOR



2 HORIZONTAL CROSS SECTION
3 Inswing shown - outswing also approved



Documents Prepared By: Lyndon F. Schmidt, P.E.
 TEXAS P.E. #104123

R.W. BUILDING CONSULTANTS, INC.
 P.O. Box 230 Valrico FL 33595
 Phone No.: 813.659.9197

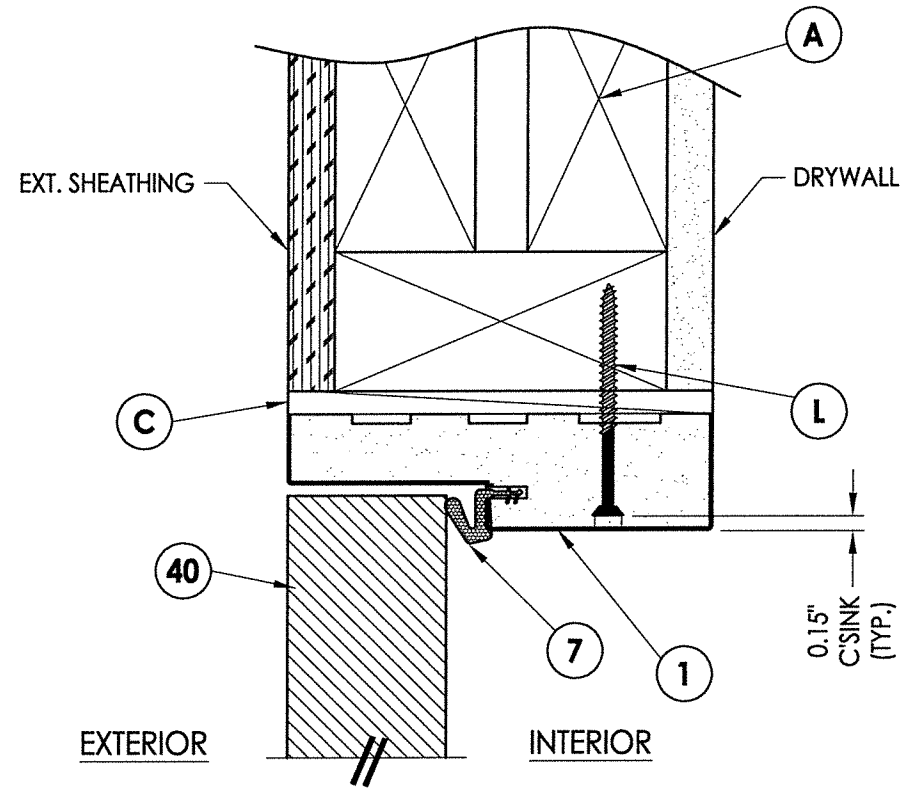
TEXAS BOARD OF PROFESSIONAL ENGINEERS
 CERTIFICATE OF REGISTRATION # F-11852

PRODUCT: WINCORE FIBERGLASS DOOR
 PART OR ASSEMBLY: ELEVATIONS

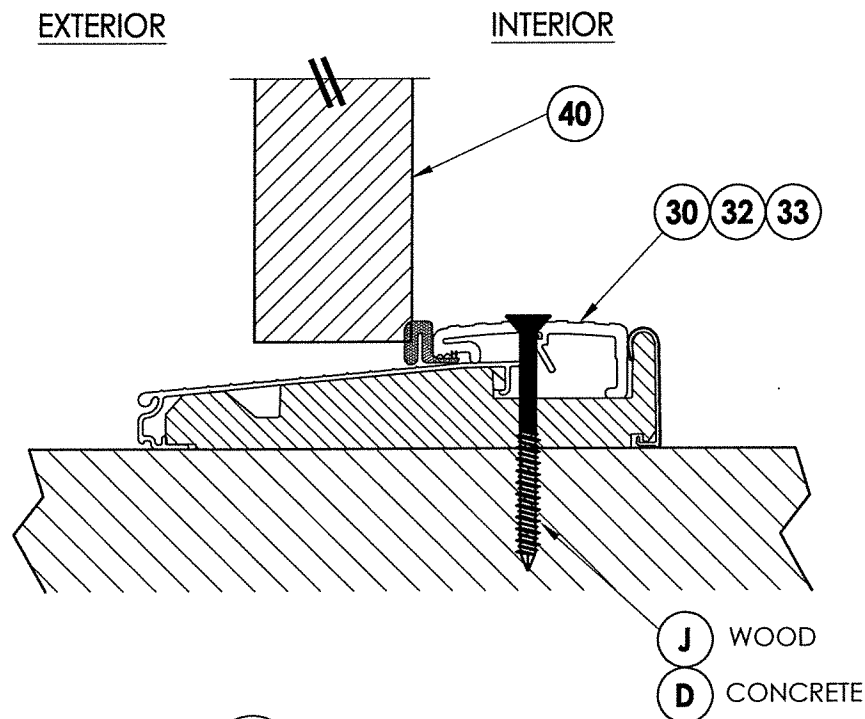
NO.	DATE	REVISIONS	BY
1	9/18/19	REMOVE OXXO CONFIGURATION & UPDATE TO 2018 IBC	LFS

DATE: 05/30/12
 SCALE: N.T.S.
 DWG. BY: JK
 CHK. BY: LFS
 DRAWING NO.: TX-4160
 SHEET 3 OF 9

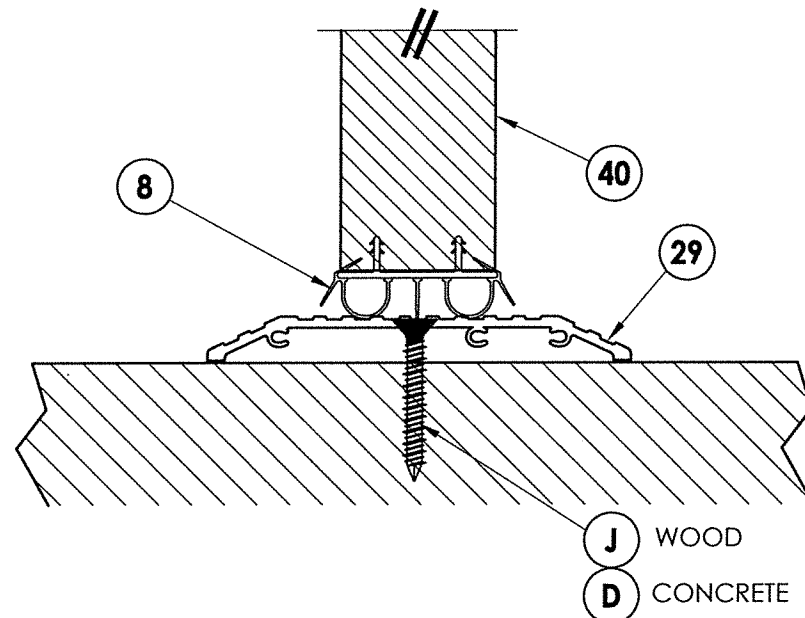
R:\Clients\Wincore PERMANENT\B - Texas Dept of Ins\Doors\DR-555 - Opaque FG Entry Doors\C - Drawings\RWBC Drawings\TX-4160 REV.dwg, 4.3



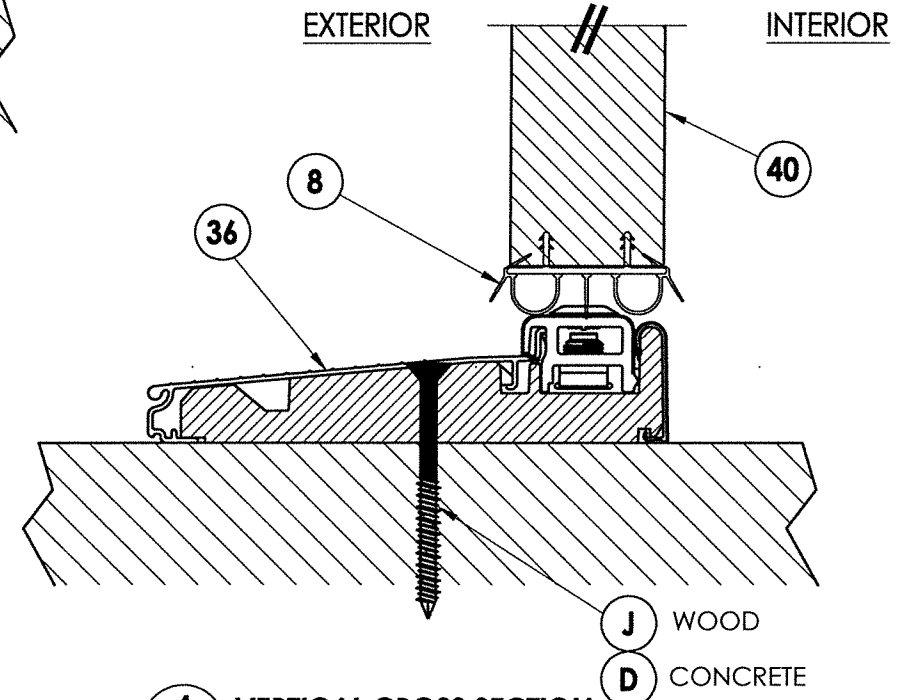
1 VERTICAL CROSS SECTION
4 Outswing shown - inswing also approved



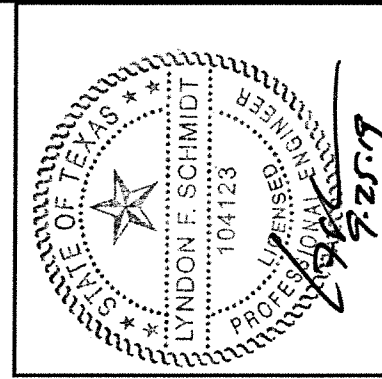
3 VERTICAL CROSS SECTION
4 Outswing configuration



2 VERTICAL CROSS SECTION
4 Shown w/ ADA threshold



4 VERTICAL CROSS SECTION
4 Inswing configuration



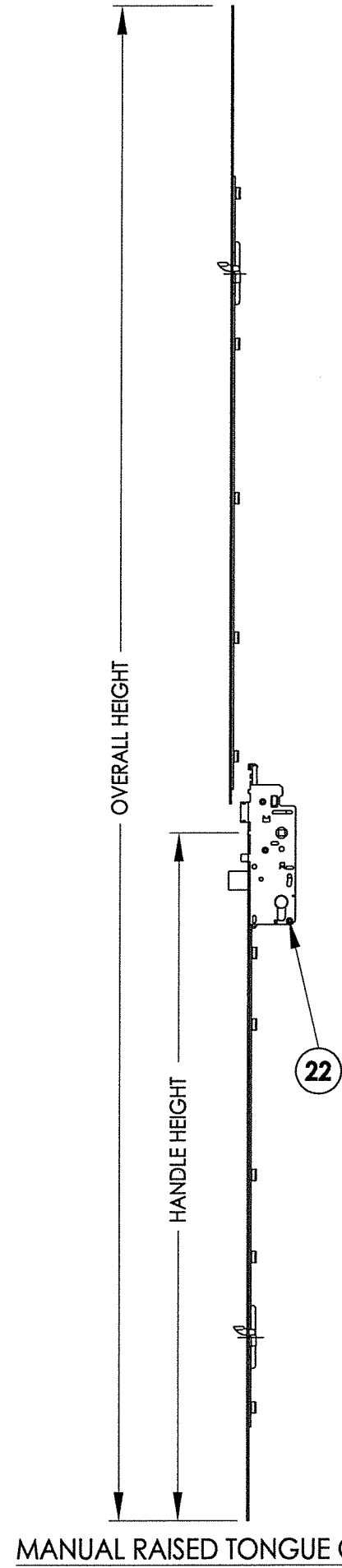
Documents Prepared By: Lyndon F. Schmidt, P.E.
 TEXAS P.E. #104123

RW BUILDING CONSULTANTS, INC.
 P.O. Box 230 Valrico FL, 33595
 Phone No.: 813.659.9197
 TEXAS BOARD OF PROFESSIONAL ENGINEERS
 CERTIFICATE OF REGISTRATION # F-11852

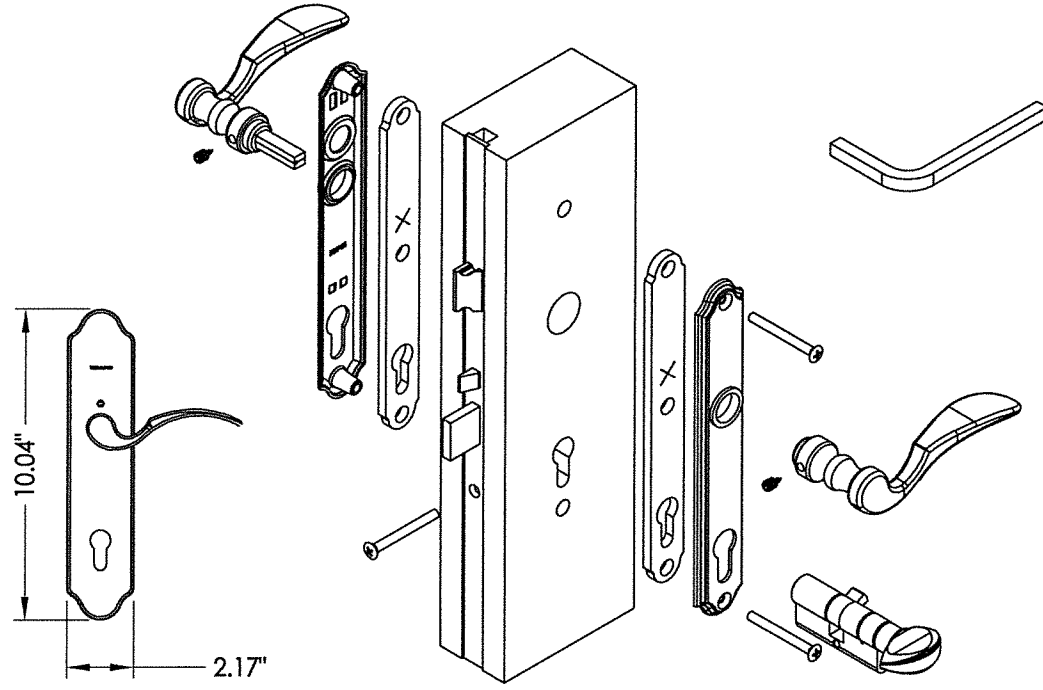
PRODUCT: WINCORE FIBERGLASS DOOR
 PART OR ASSEMBLY: VERTICAL CROSS SECTIONS

NO.	DATE	BY	REVISIONS
1	9/18/19	LFS	REMOVE OXXO CONFIGURATION & UPDATE TO 2018 IBC

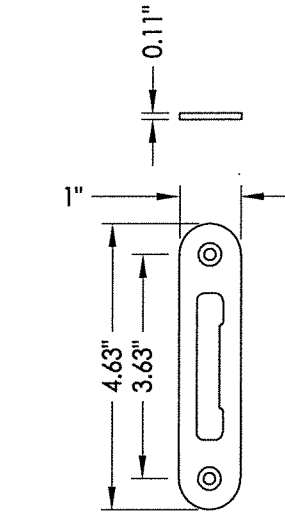
DATE: 05/30/12
 SCALE: N.T.S.
 DWG. BY: JK
 CHK. BY: LFS
 DRAWING NO.: TX-4160
 SHEET 4 OF 9



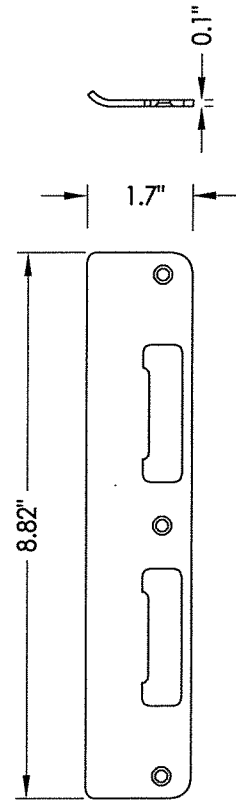
MANUAL RAISED TONGUE GEAR SYSTEM



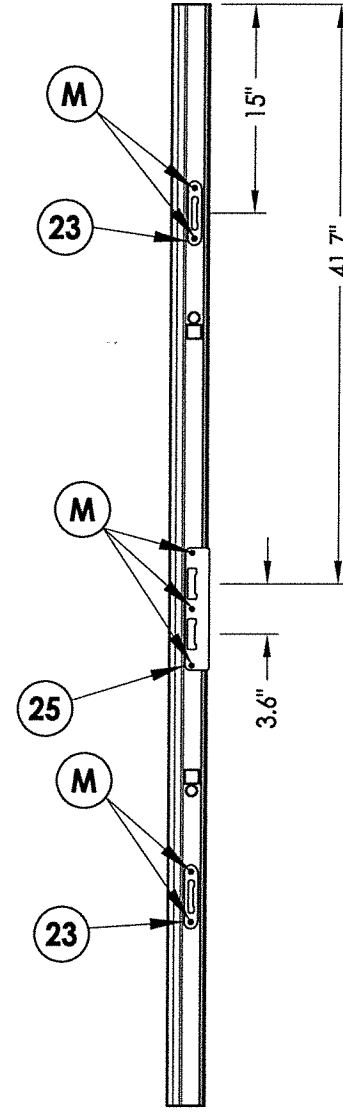
22 HOPPE MULTI-POINT LOCKSET
3-Point "Tongue"



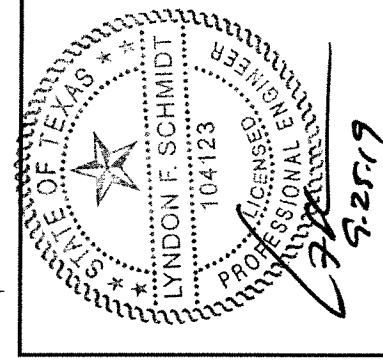
23 MULTI-POINT STRIKE PLATE



25 LATCH AND DEADBOLT STRIKE PLATE
Tongue system



STRIKE JAMB

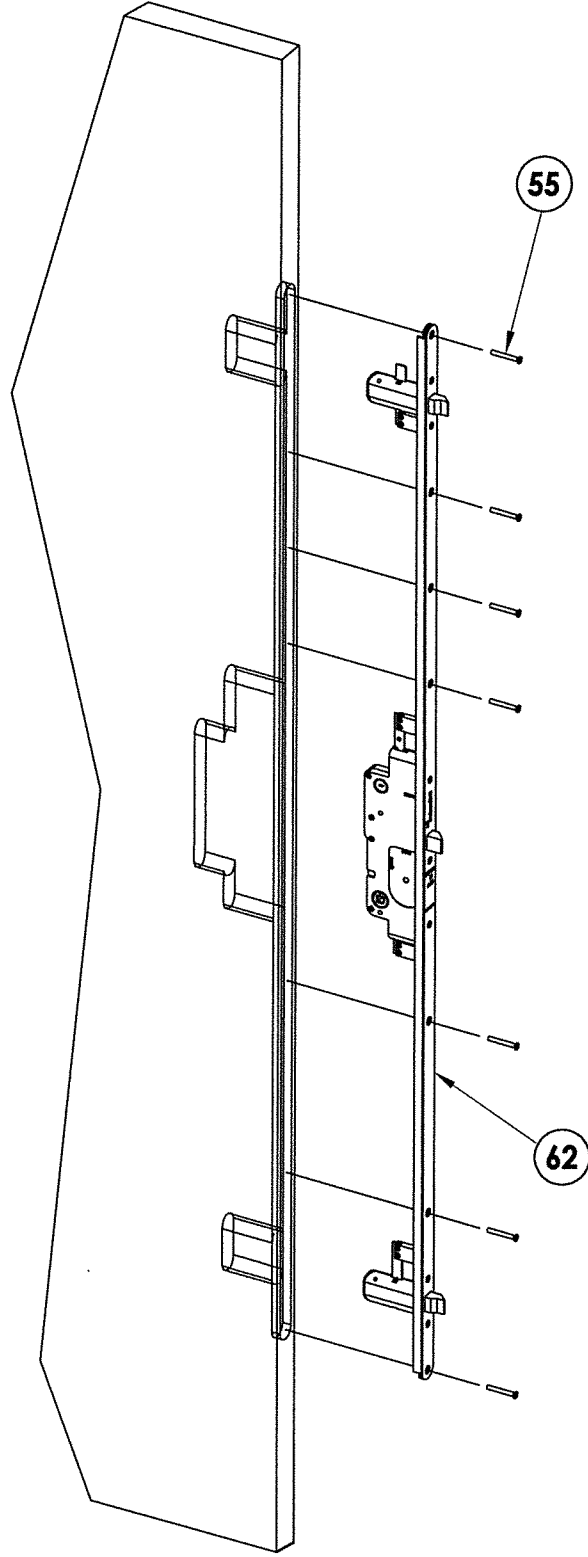


Documents Prepared By: Lyndon F. Schmidt, P.E.
TEXAS P.E. #104123

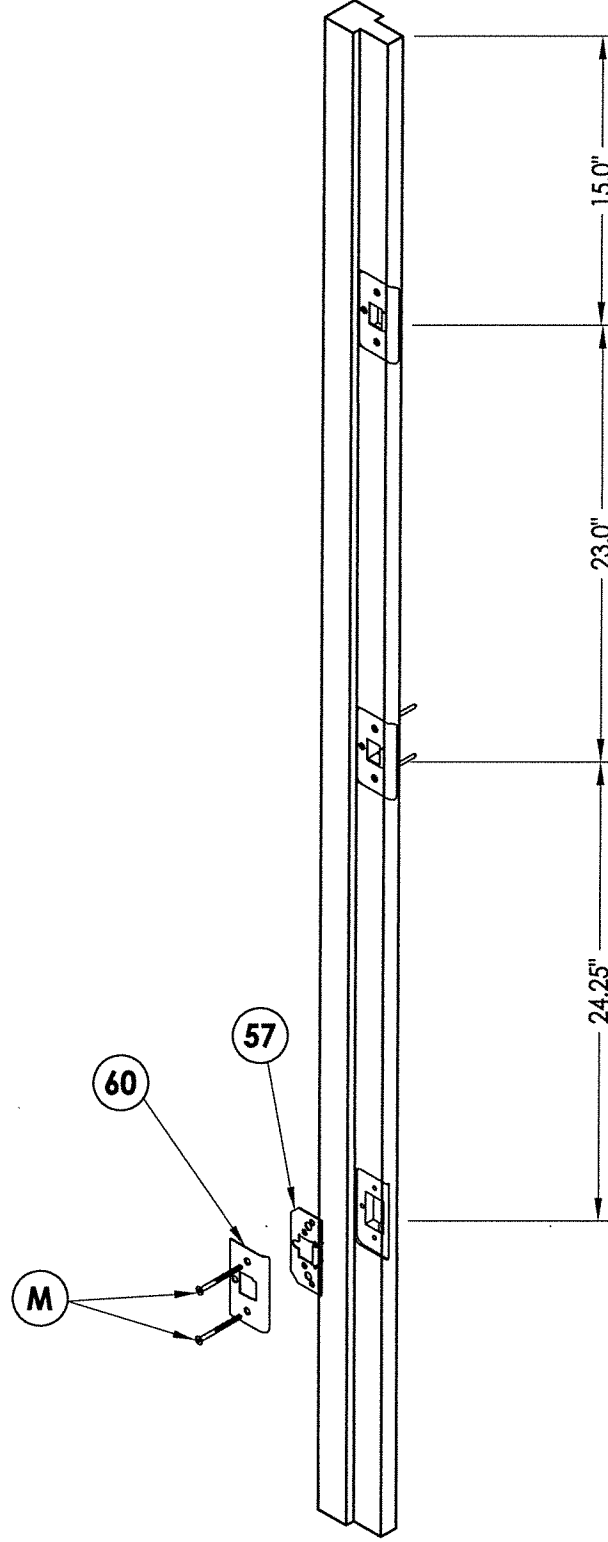
RW BUILDING CONSULTANTS, INC.
P.O. Box 230 Vairico FL 33595
Phone No.: 813.659.9197

TEXAS BOARD OF PROFESSIONAL ENGINEERS
CERTIFICATE OF REGISTRATION # F-11852

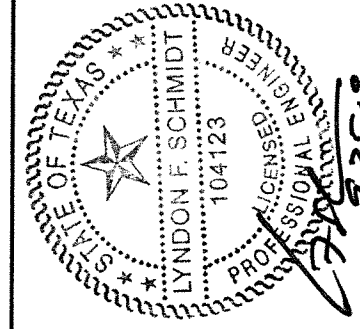
PRODUCT:		WINCORE FIBERGLASS DOOR	
		PART OR ASSEMBLY: 3-POINT LOCK DETAILS	
1	9/18/19	REMOVE OXO CONFIGURATION & LFS UPDATE TO 2018 IBC	LFS
NO.	DATE		BY
REVISIONS			
DATE: 05/30/12			
SCALE: N.T.S.			
DWG. BY: JK			
CHK. BY: LFS			
DRAWING NO.: TX-4160			
SHEET 5 OF 9			



59 **W & F TRILENNIUM 3000 SERIES**
3-Point Lock



ASTRAGAL STRIKE DETAIL



Documents Prepared By: Lyndon F. Schmidt, P.E.
TEXAS P.E. #104123

RW BUILDING CONSULTANTS, INC.
P.O. Box 230 Vairico FL. 33595
Phone No.: 813.659.9197
TEXAS BOARD OF PROFESSIONAL ENGINEERS
CERTIFICATE OF REGISTRATION # F-11852

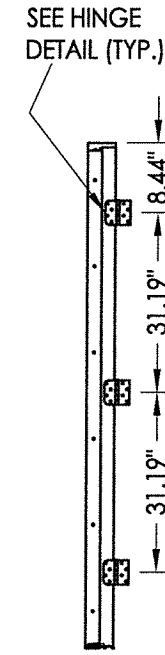
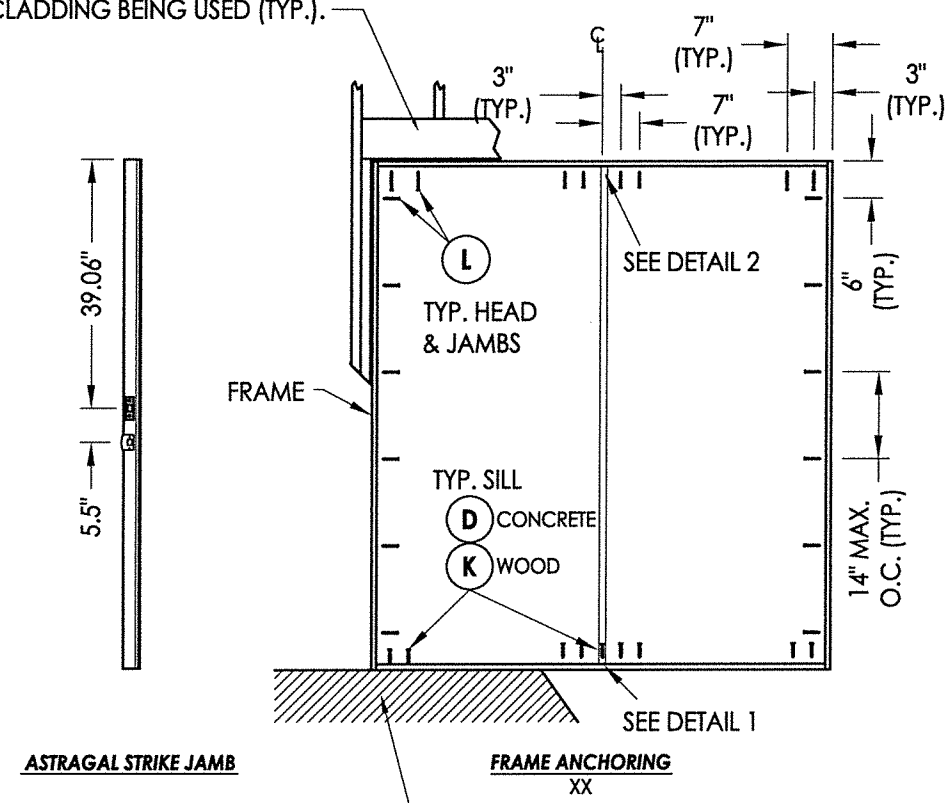
PRODUCT: WINCORE FIBERGLASS DOOR
PART OR ASSEMBLY: 3-POINT LOCK DETAILS

NO.	DATE	REVISIONS	BY
1	9/18/19	REMOVE OXO CONFIGURATION & UPDATE TO 2018 IBC	LFS

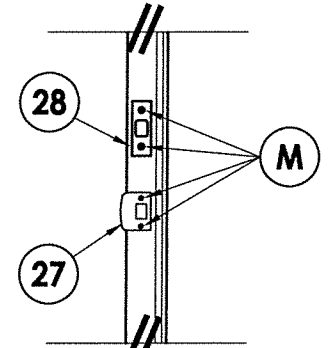
DATE: 05/30/12
SCALE: N.T.S.
DWG. BY: JK
CHK. BY: LFS
DRAWING NO.: TX-4160
SHEET 6 OF 9

R:\Clients\Wincore PERMANENT.B - Texas Dept of Ins\Doors\DR-555 - Opaque Fg Entry Doors\C - Drawings\RWBC Drawings\TX-4160 REV.dwg, 7.3

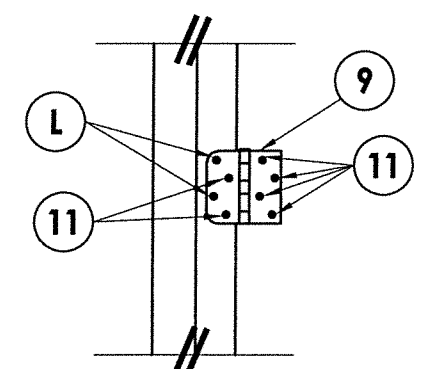
2X FRAMING TO BE DESIGNED BY THE ENGINEER OR ARCHITECT OF RECORD BASED ON WIND LOADS AND THE CLADDING BEING USED (TYP.).



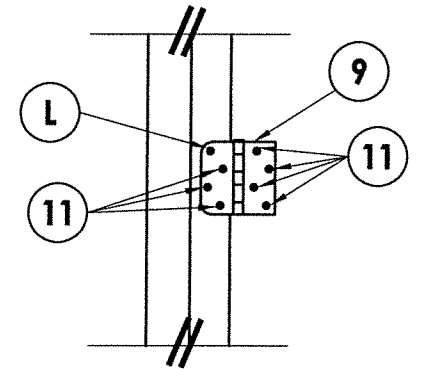
HINGE JAMB



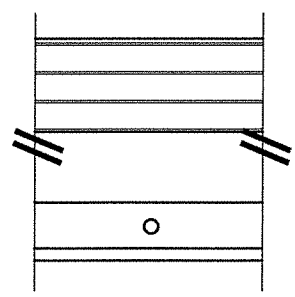
LATCH & DEAD BOLT DETAIL



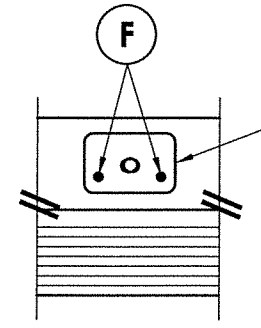
HINGE DETAIL Inswing



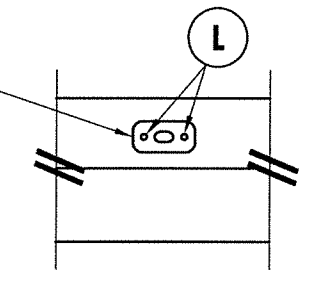
HINGE DETAIL Outswing



DETAIL 1
Astragal throw bolts at the threshold (Inswing)



DETAIL 1
Astragal throw bolt strike plate @ threshold (Outswing)



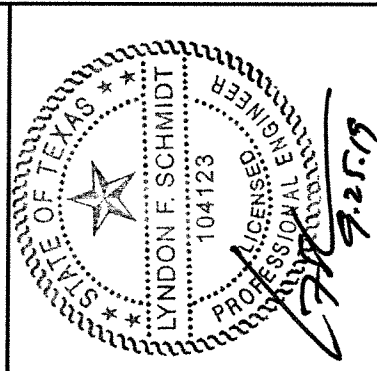
DETAIL 2
Attach astragal throw bolt strike plate to frame as shown

CONCRETE ANCHOR NOTES:

- Concrete anchor locations at the corners may be adjusted to maintain the min. edge distance to mortar joints. Concrete anchor locations noted as "MAX. ON CENTER" must be adjusted to maintain the min. edge distance to mortar joints, additional concrete anchors may be required to ensure the "MAX. ON CENTER" dimension are not exceeded.

Concrete anchor table:

ANCHOR TYPE	ANCHOR SIZE	MIN. EMBEDMENT	MIN. CLEARANCE TO MASONRY EDGE	MIN. CLEARANCE TO ADJACENT ANCHOR
ITW TAPCON®	1/4"	1-1/4"	2-1/2"	3"
ITW TAPCON®	3/16"	1-1/4"	3"	1-1/2"

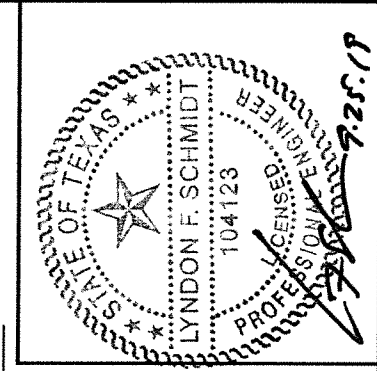
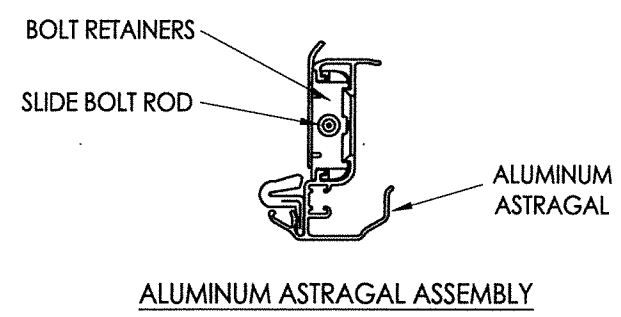
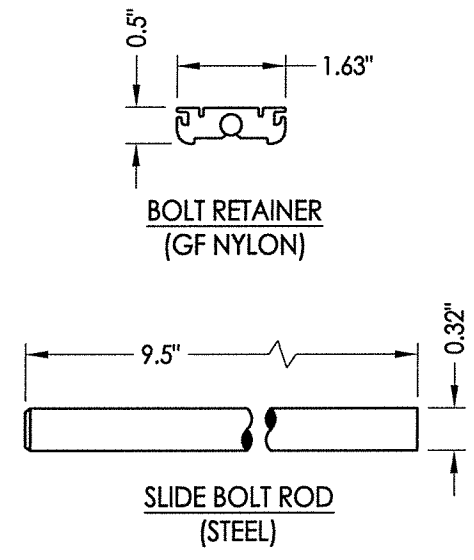
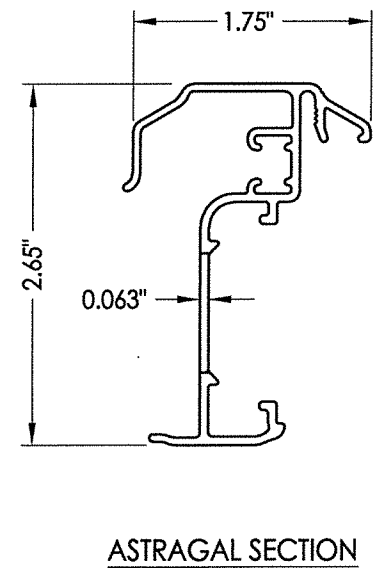
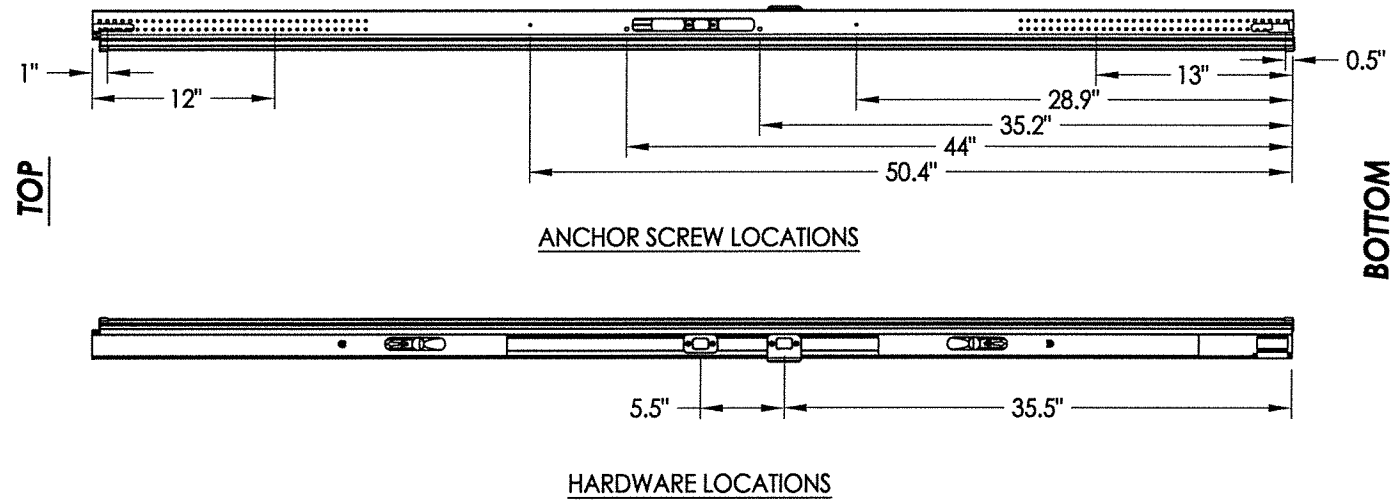
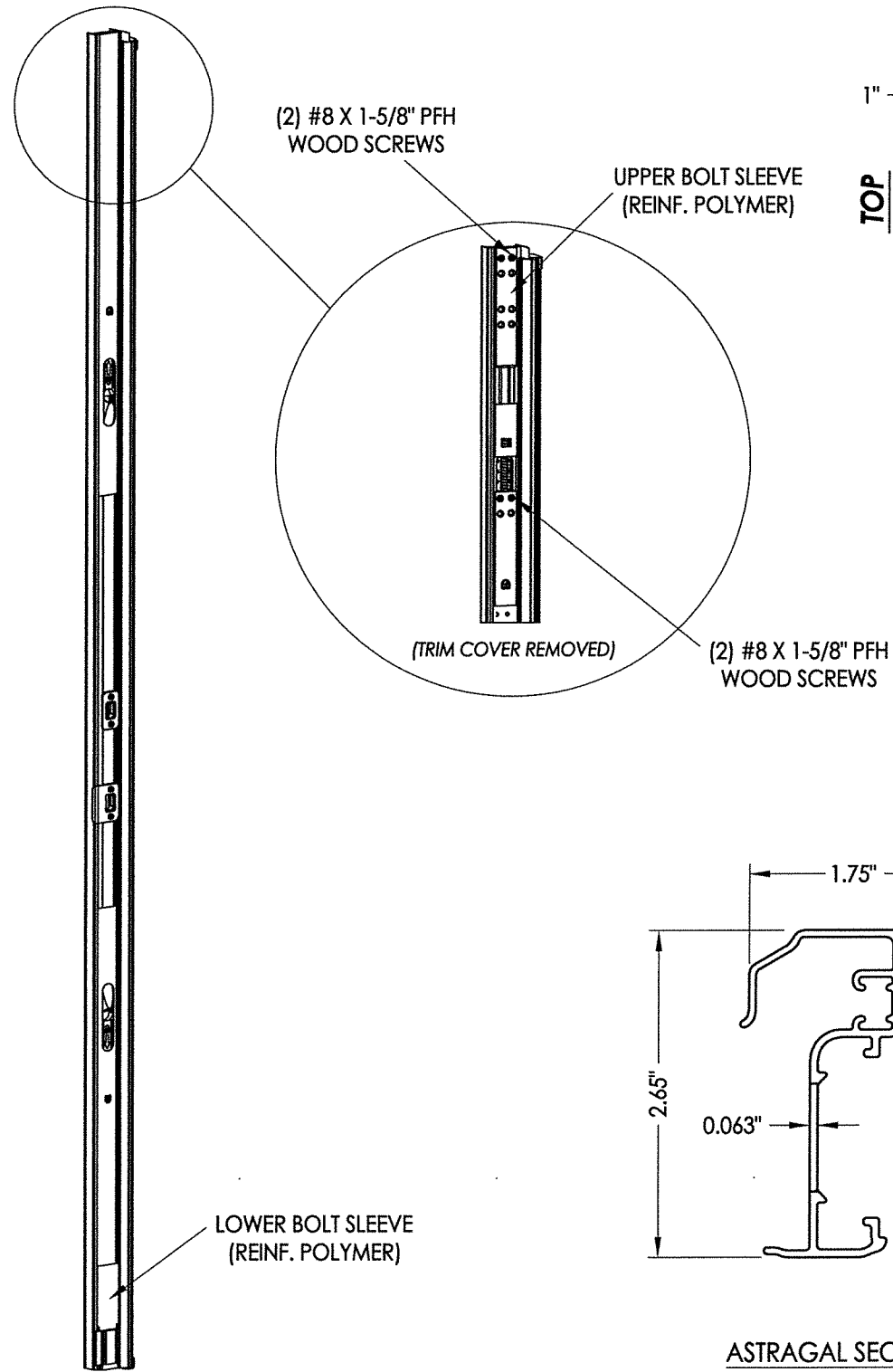


Documents Prepared By: Lyndon F. Schmidt, P.E.
TEXAS P.E. #104123

RW BUILDING CONSULTANTS, INC.
P.O. Box 230 Vairico FL 33595
Phone No.: 813.659.9197

TEXAS BOARD OF PROFESSIONAL ENGINEERS
CERTIFICATE OF REGISTRATION # F-11852

PRODUCT:	WINCORE FIBERGLASS DOOR	
PART OR ASSEMBLY:	FRAME ANCHORING	
REVISIONS		
NO.	DATE	BY
1	9/18/19	LFS
REMOVE OXXO CONFIGURATION & UPDATE TO 2018 IBC		
DATE:	05/30/12	
SCALE:	N.T.S.	
DWG. BY:	JK	
CHK. BY:	LFS	
DRAWING NO.:	TX-4160	
SHEET	7 of 9	



Documents Prepared By: Lyndon F. Schmidt, P.E.
TEXAS P.E. #104123

RW BUILDING CONSULTANTS, INC.
P.O. Box 230 Valrico FL 33595
Phone No.: 813.659.9197

TEXAS BOARD OF PROFESSIONAL ENGINEERS
CERTIFICATE OF REGISTRATION # F-11852

PRODUCT:		WINCORE FIBERGLASS DOOR	
PART OR ASSEMBLY:		ASTRAGAL DETAILS	
NO.	DATE	REVISIONS	BY
1	9/18/19	REMOVE OXXO CONFIGURATION & UPDATE TO 2018 IBC	LFS

DATE: 05/30/12

SCALE: N.T.S.

DWG. BY: JK

CHK. BY: LFS

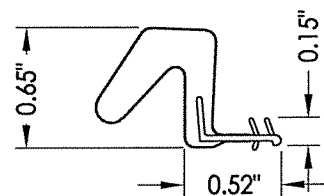
DRAWING NO.: TX-4160

SHEET 8 OF 9

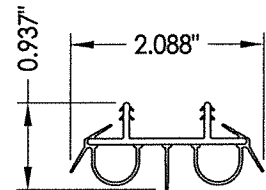
R:\Clients\Wincore PERMANENT\B - Texas Dept of Ins\Doors\DR-555 - Opaque FG Entry Doors\C - Drawings\RWBC Drawings\TX-4160 REV.dwg, 9.3

BILL OF MATERIALS

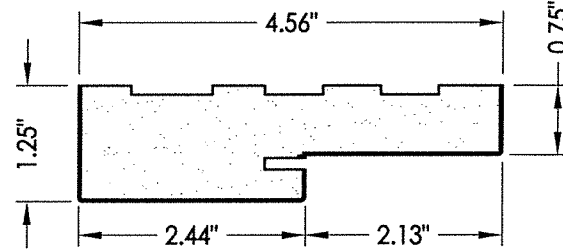
ITEM #	DESCRIPTION	MATERIAL
A	2X FRAMING (G >= 0.55)	WOOD
B	2X BUCK SG >= 0.55	WOOD
C	1/4" MAX. SHIM SPACE	-
D	1/4" PFH ITW CONCRETE SCREW (1-3/4" MIN. EMB.)	STEEL
F	3/16" PFH ITW CONCRETE SCREW (1-3/4" MIN. EMB.)	STEEL
J	#10 X 3" PFH WOOD SCREW	STEEL
L	#8 X 2-1/2" PFH WOOD SCREW	STEEL
M	#8 X 1-1/2" PFH WOOD SCREW	STEEL
1	POLY FIBER JAMB	COMP. / VINYL
7	WEATHERSTRIP	FOAM
8	DOOR BOTTOM SWEEP	VINYL
9	4" X 4" BUTT HINGE	STEEL
11	#9 X 3/4" PFH WOOD SCREW	STEEL
12	NON-STRUCTURAL SEALANT	SILICONE
13	STRUCTURAL SILICONE (DOW 995)	SILICONE
22	HOPPE - 3 POINT "TONGUE" MULTI-POINT LOCKSET	STEEL
23	MULTI-POINT STRIKE PLATE (TONGUE SYSTEM)	STEEL
25	LATCH AND DEADBOLT STRIKE PLATE (TONGUE SYSTEM)	STEEL
27	LATCH STRIKE PLATE	STEEL
29	ADA THRESHOLD	ALUM
30	OUTSWING THRESHOLD	ALUM/WOOD
32	OUTSWING THRESHOLD	ALUM/WOOD
33	OUTSWING THRESHOLD	ALUM/COMP
36	INSWING THRESHOLD	ALUM/COMP
40	DOOR PANEL - SEE DOOR PANEL DETAIL SHEET FOR CONSTRUCTION DETAILS	-
42	ASTRAGAL THROW BOLT STRIKE PLATE	STEEL
55	#10 X 1-1/2" PFH SCREW	STEEL
57	BACKING PLATE	STEEL
58	#8 X 2" PFH WS	STEEL
59	W & F TRILENNIUM SERIES 3000 - 3 POINT LOCK	-
60	MULTI-POINT STRIKE PLATE	STEEL
62	LOCK ASSEMBLY	STEEL
70	ASTRAGAL BY ENDURA	ALUM
88	2X REINFORCEMENT SG >= 0.55	WOOD



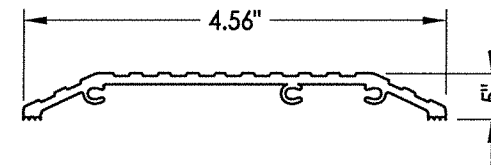
7 WEATHERSTRIP
Endura Force 5



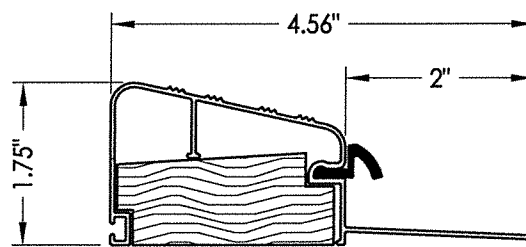
8 DOOR BOTTOM SWEEP



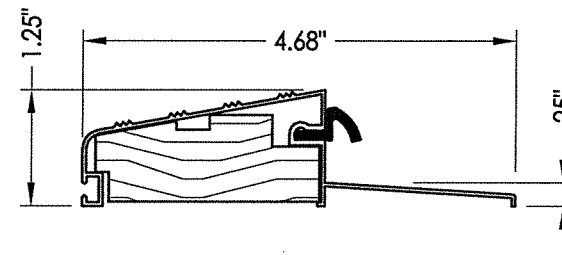
1 POLY FIBER JAMB
Plastpro



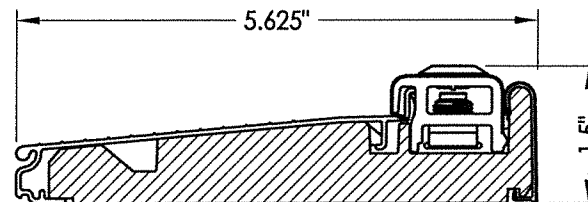
29 ADA THRESHOLD
DLP



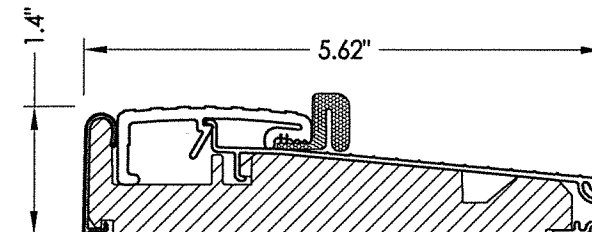
30 OUTSWING THRESHOLD
DLP (QOSR)



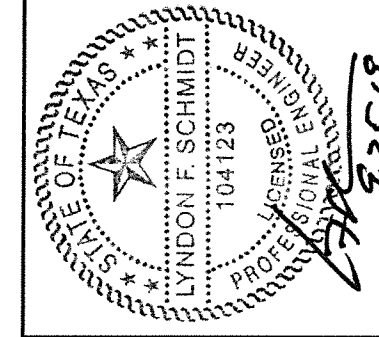
32 OUTSWING THRESHOLD
DLP (QOSH)



36 INSWING THRESHOLD
Endura (Z-Series)



33 OUTSWING THRESHOLD
Endura (Z-Series)



Documents Prepared By: Lyndon F. Schmidt, P.E.
TEXAS P.E. #104123

RW BUILDING CONSULTANTS, INC.
P.O. Box 230 Valrico FL 33595
Phone No.: 813.659.9197

TEXAS BOARD OF PROFESSIONAL ENGINEERS
CERTIFICATE OF REGISTRATION # F-11852

PRODUCT: WINCORE FIBERGLASS DOOR
PART OR ASSEMBLY: BILL OF MATERIALS

NO.	DATE	REVISIONS	BY
1	9/18/19	REMOVE OXO CONFIGURATION & UPDATE TO 2018 IBC	LFS

DATE: 05/30/12
SCALE: N.T.S.
DWG. BY: JK
CHK. BY: LFS
DRAWING NO.: TX-4160
SHEET 9 OF 9

© 2012 R.W. BUILDING CONSULTANTS INC.