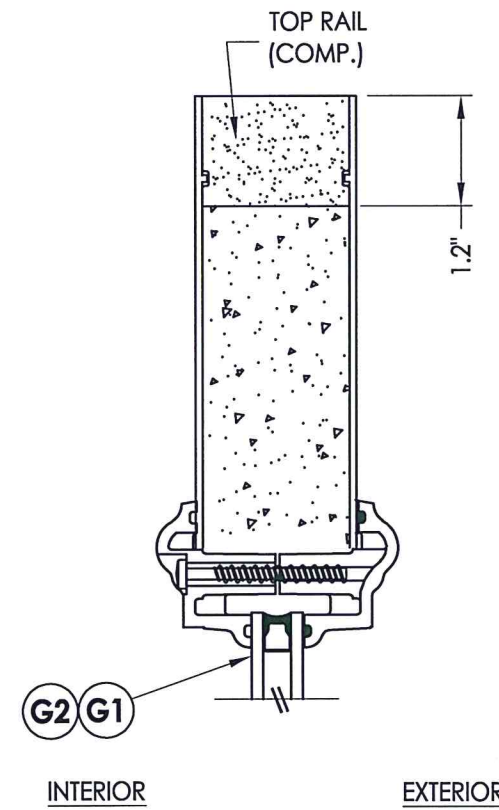
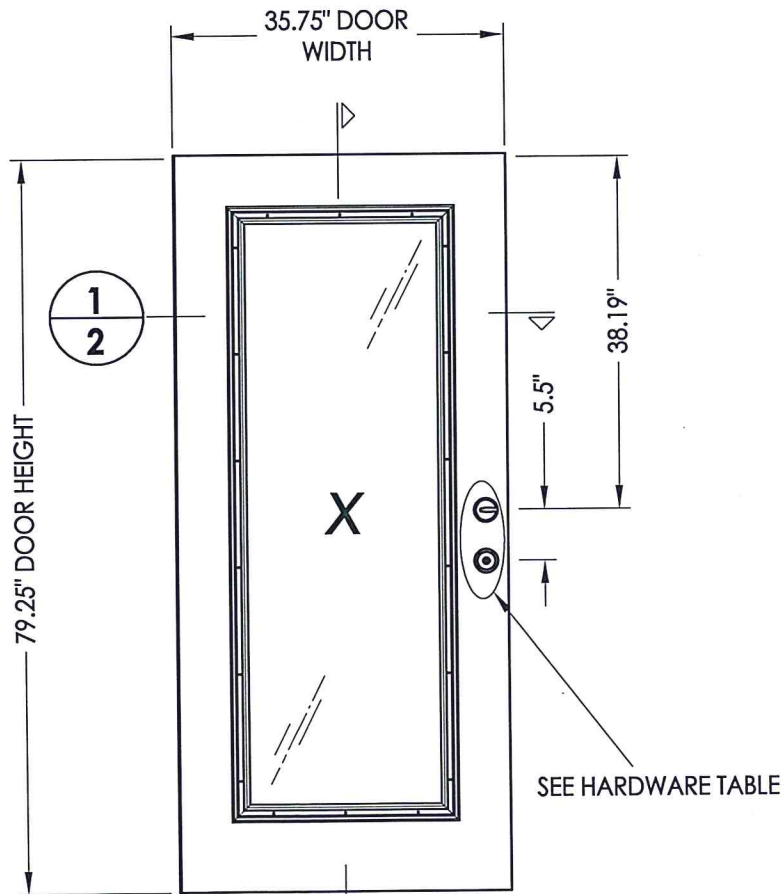


1 HORIZONTAL CROSS SECTION

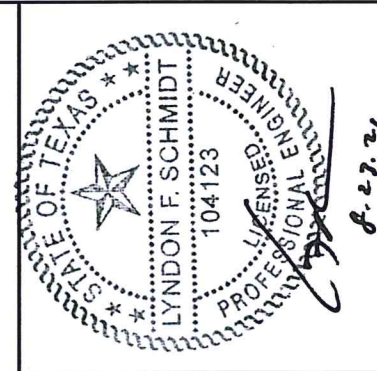
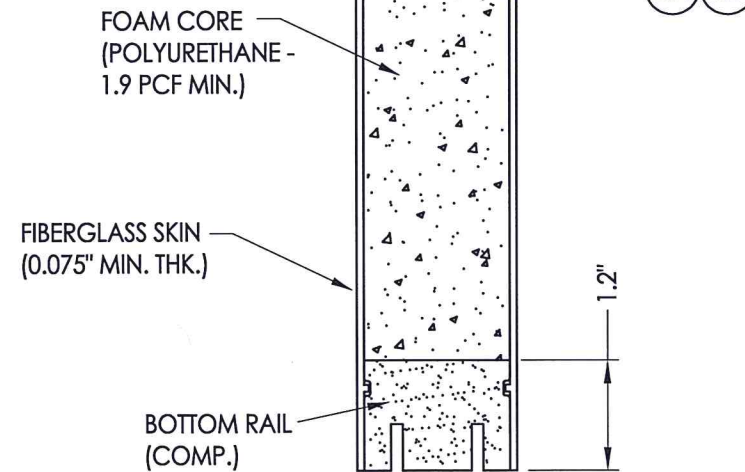
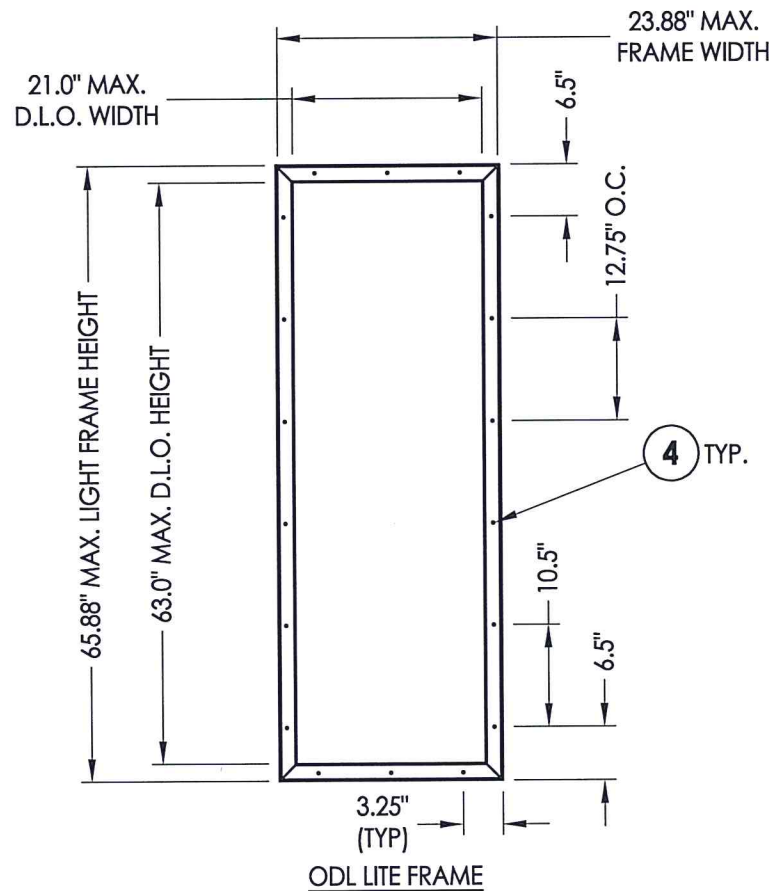
HARDWARE TABLE	
MANUFACTURER	MODEL
KWIKSET	KNOB: SIGNATURE SERIES DEADBOLT: SIGNATURE SERIES (780)
SCHLAGE	KNOB: "F" SERIES (F10) LEVER: "F" SERIES (F10) DEADBOLT: "B" SERIES (B60/62)
SCHLAGE	HANDLE SET W/DEADBOLT: "F" SERIES (F60)



2 VERTICAL CROSS SECTION



40 DOOR PANEL  
Plastpro  
Fiberglass



Documents Prepared By: Lyndon F. Schmidt, P.E.  
TEXAS P.E. #104123

**RW** BUILDING CONSULTANTS, INC.  
P.O. Box 230 Valrico FL, 33595  
Phone No.: 813.659.9197

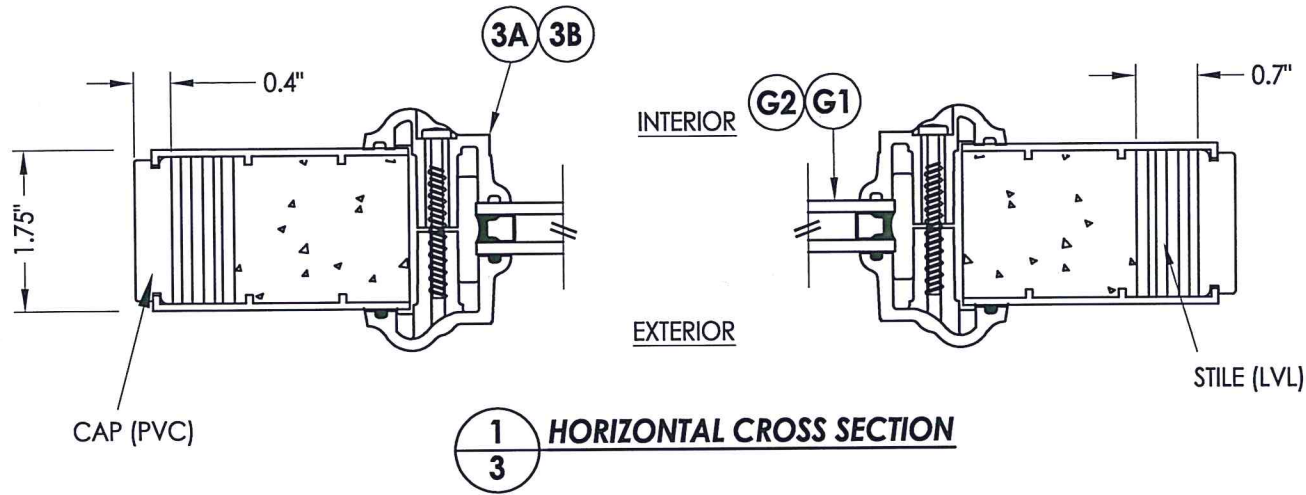
TEXAS BOARD OF PROFESSIONAL ENGINEERS  
CERTIFICATE OF REGISTRATION # F-11852

PRODUCT: PLASTPRO FIBERGLASS DOOR

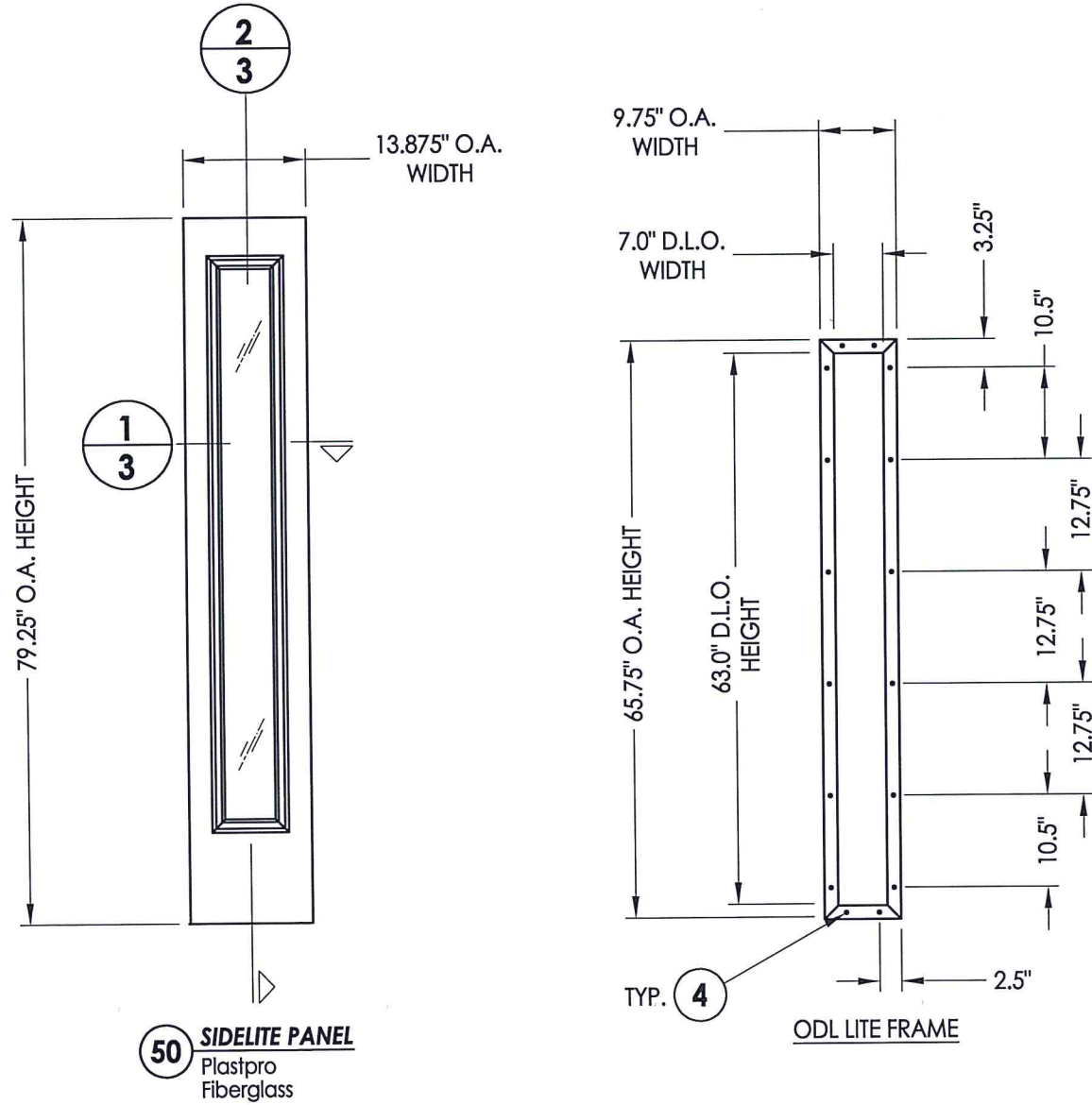
PART OR ASSEMBLY: DOOR PANEL DETAILS

NO.	DATE	REVISIONS	BY
2	8/19/20	REVISE B.O.M./COMPONENTS SHT.	LFS
1	5/27/20	UPDATE TO 2018 IBC/IRC CODE	LFS

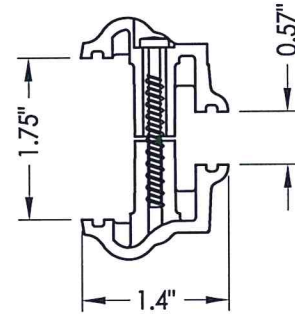
DATE: 1/17/11  
SCALE: N.T.S.  
DWG. BY: JK  
CHK. BY: LFS  
DRAWING NO.: TX-4121  
SHEET 2 OF 11



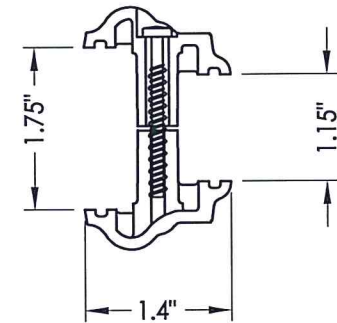
**1**  
**3** HORIZONTAL CROSS SECTION



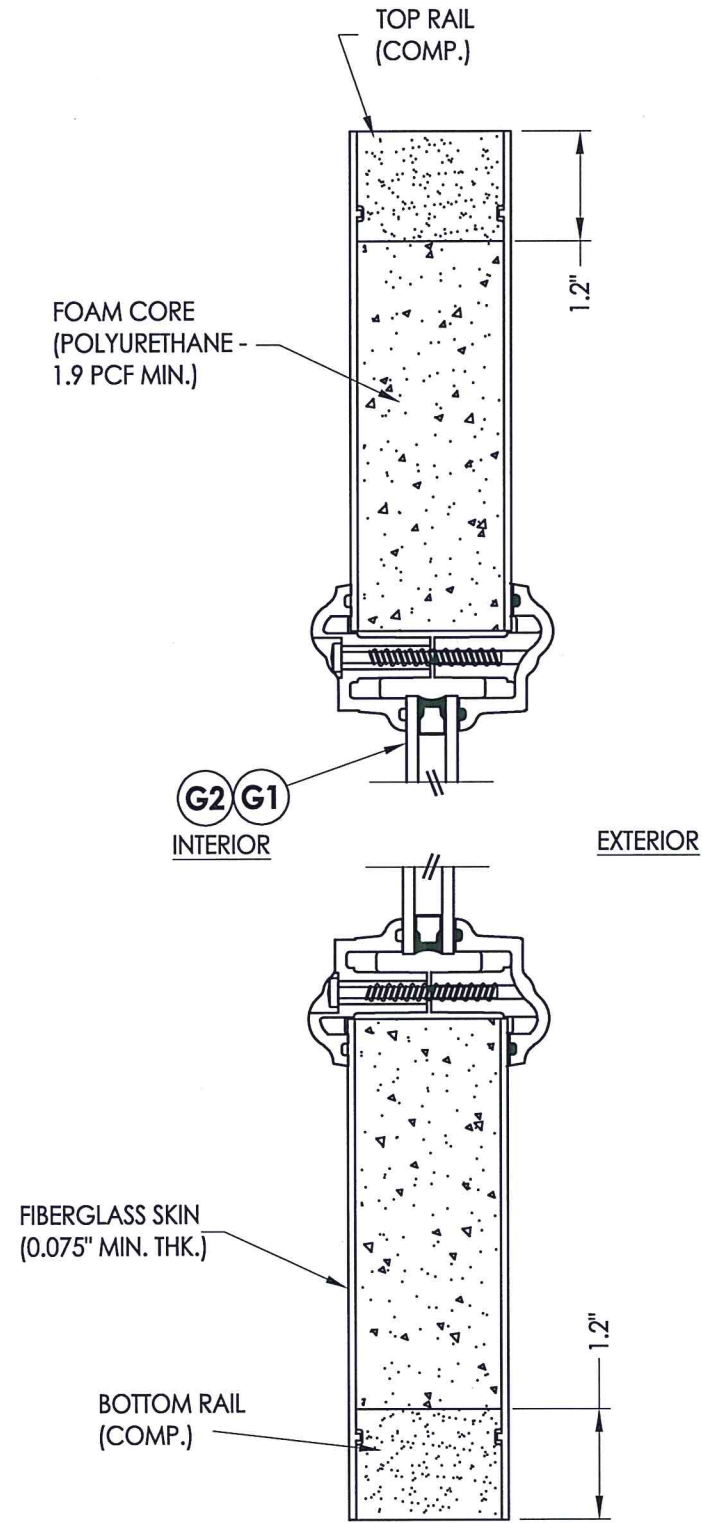
**50** SIDELITE PANEL  
Plastpro  
Fiberglass



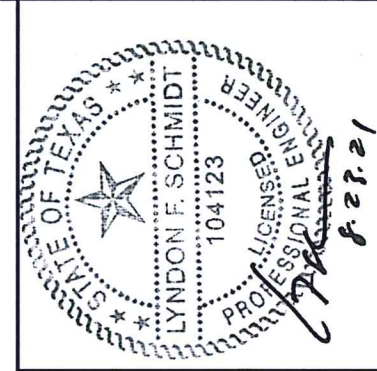
**3A** OD LITE FRAME  
HP Polypropylene  
1/2\" I.G.



**3B** OD LITE FRAME  
HP Polypropylene  
1\" I.G.



**2**  
**3** VERTICAL CROSS SECTION



Documents Prepared By: Lyndon F. Schmidt, P.E.  
TEXAS P.E. #104123

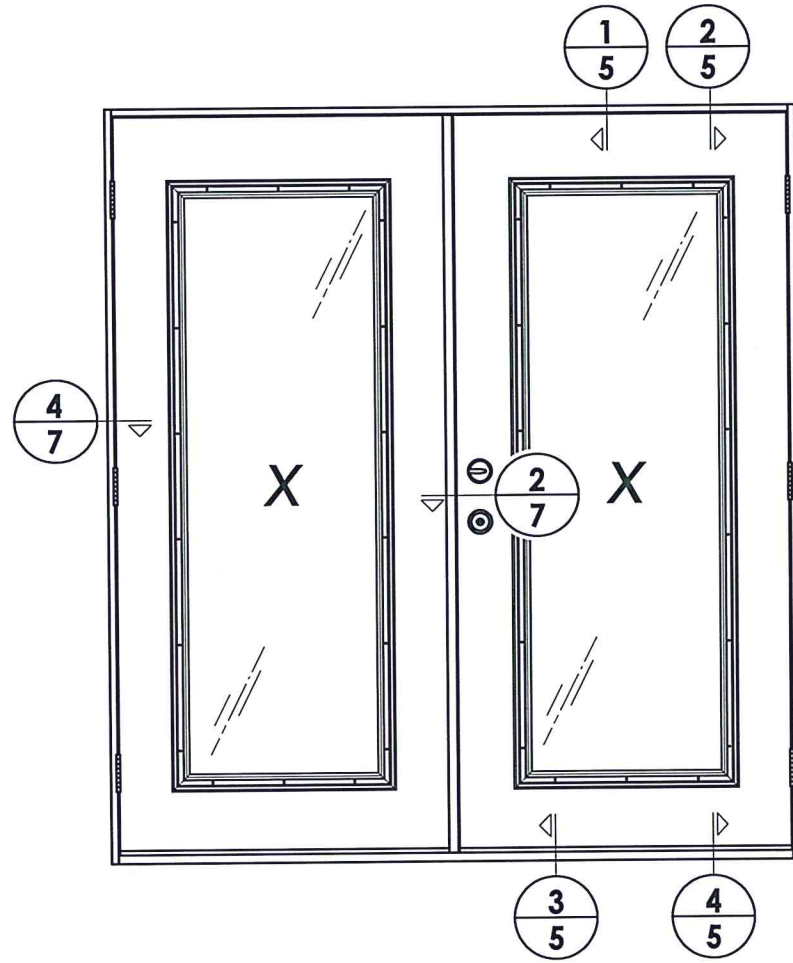
**RW** BUILDING CONSULTANTS, INC.  
P.O. Box 230 Vairico FL, 33595  
Phone No.: 813.659.9197  
TEXAS BOARD OF PROFESSIONAL ENGINEERS  
CERTIFICATE OF REGISTRATION # F-11852

PRODUCT: PLASTPRO  
FIBERGLASS DOOR  
PART OR ASSEMBLY: SIDELITE PANEL DETAILS

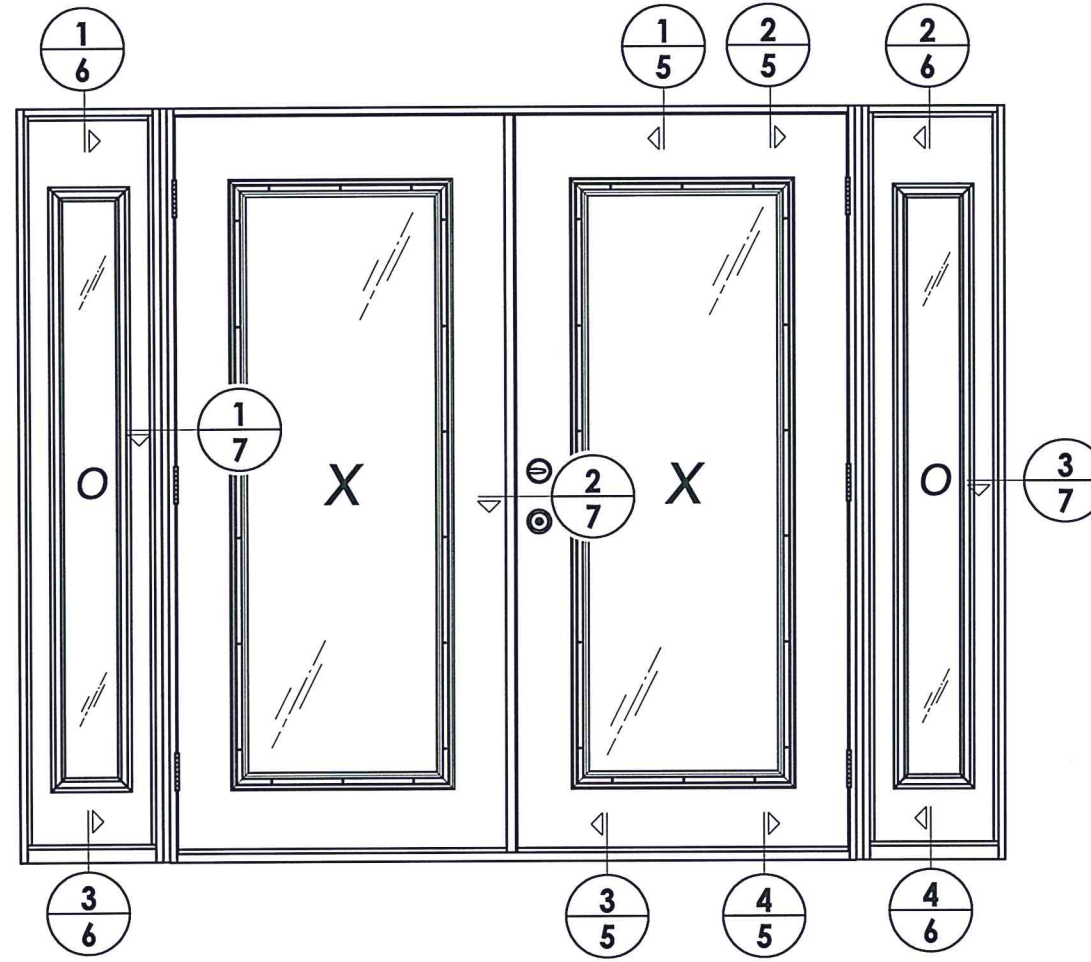
NO.	DATE	REVISIONS
2	8/19/20	REVISE B.O.M./COMPONENTS SHT.
1	5/27/20	UPDATE TO 2018 IBC/IRC CODE
		LFS
		LFS
		BY

DATE: 1/17/11  
SCALE: N.T.S.  
DWG. BY: JK  
CHK. BY: LFS  
DRAWING NO.: TX-4121  
SHEET 3 OF 11

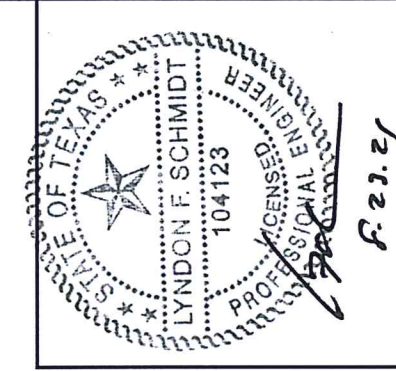




ELEVATION (XX)



ELEVATION (OXXO)

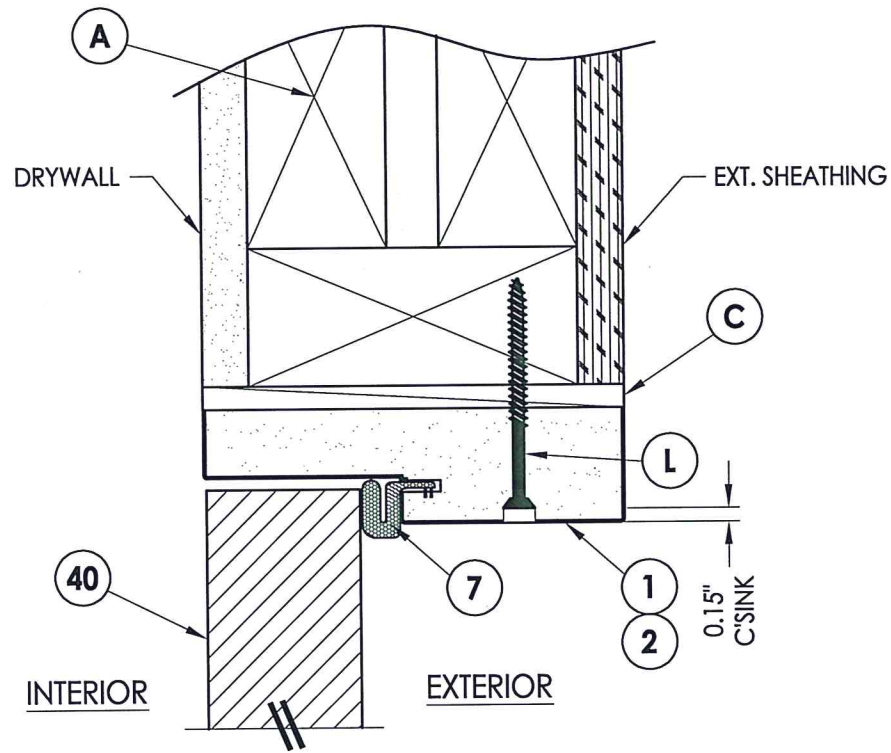


Documents Prepared By: Lyndon F. Schmidt, P.E.  
TEXAS P.E. #104123

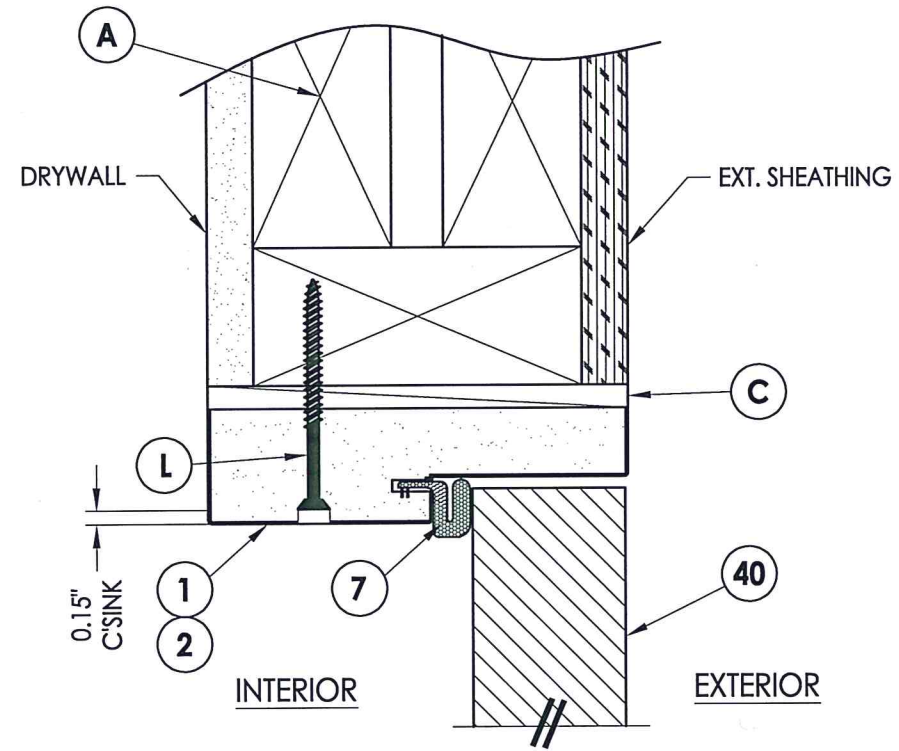
**RW** BUILDING CONSULTANTS, INC.  
P.O. Box 230 Vairico FL. 33595  
Phone No.: 813.659.9197  
TEXAS BOARD OF PROFESSIONAL ENGINEERS  
CERTIFICATE OF REGISTRATION # F-11852

PRODUCT:		PLASTIPRO FIBERGLASS DOOR	
PART OR ASSEMBLY:		ELEVATIONS	
NO.	DATE	REVISE B.O.M./COMPONENTS SHT.	BY
2	8/19/20	UPDATE TO 2018 IBC/IRC CODE	LFS
1	5/27/20		LFS
DATE: 1/17/11		REVISIONS	
SCALE: N.T.S.			
DWG. BY: JK			
CHK. BY: LFS			
DRAWING NO.: TX-4121			
SHEET 4 OF 11			

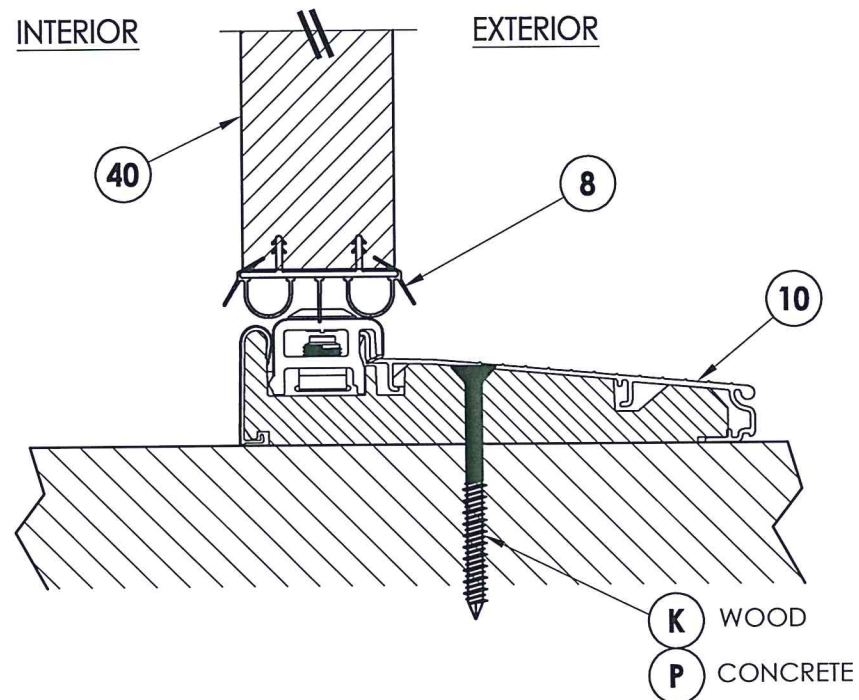




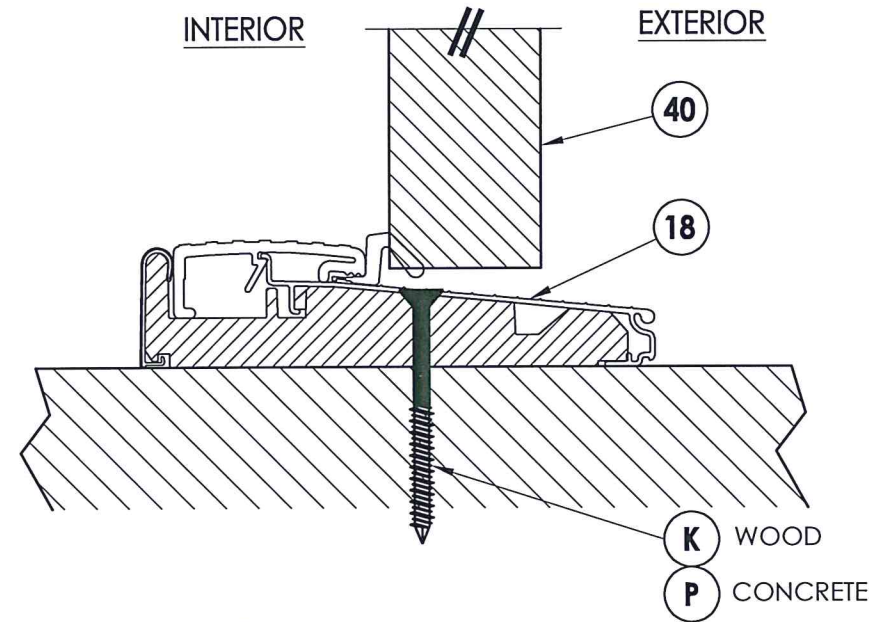
**1** VERTICAL CROSS SECTION  
**5** Inswing shown



**2** VERTICAL CROSS SECTION  
**5** Outswing shown



**3** VERTICAL CROSS SECTION  
**5** Inswing shown



**4** VERTICAL CROSS SECTION  
**5** Outswing shown



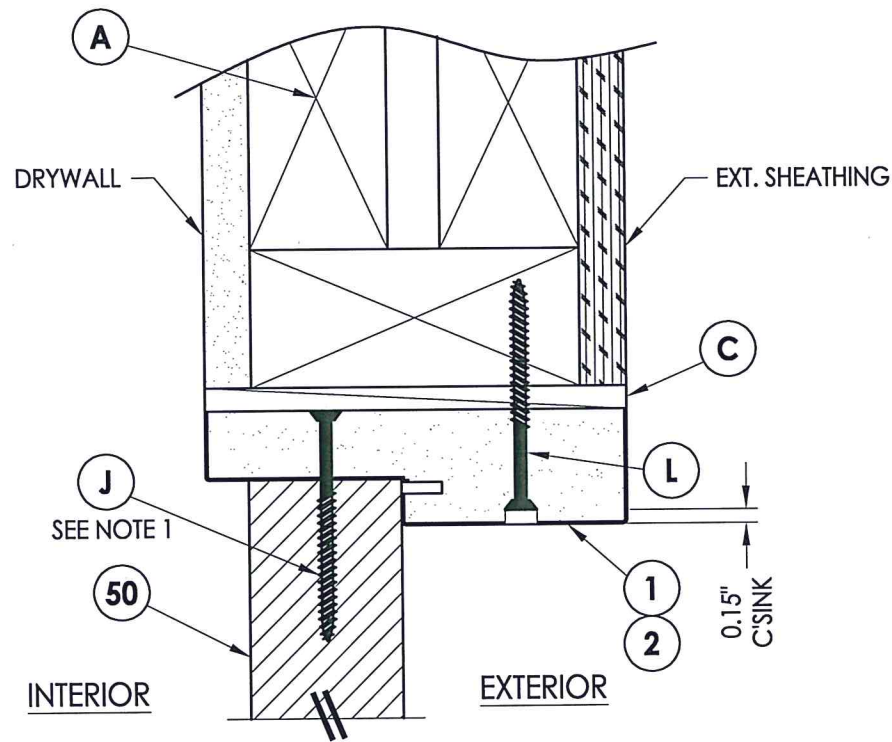
Documents Prepared By: Lyndon F. Schmidt, P.E.  
 TEXAS P.E. #104123

**RW** BUILDING CONSULTANTS, INC.  
 P.O. Box 230 Valrico FL, 33595  
 Phone No.: 813.659.9197  
 TEXAS BOARD OF PROFESSIONAL ENGINEERS  
 CERTIFICATE OF REGISTRATION # F-11852

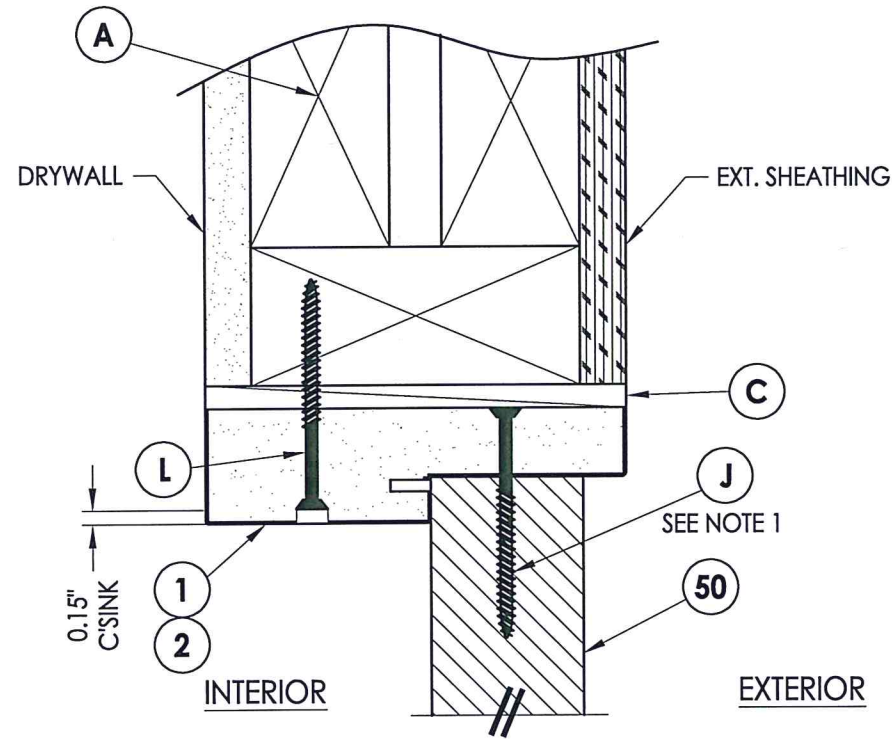
PRODUCT:		PLASTPRO FIBERGLASS DOOR	
PART OR ASSEMBLY:		VERTICAL CROSS SECTIONS	
NO.	DATE	BY	REVISIONS
2	8/19/20	LFS	REVISE B.O.M./COMPONENTS SHT.
1	5/27/20	LFS	UPDATE TO 2018 IBC/IRC CODE
DATE: 1/17/11			
SCALE: N.T.S.			
DWG. BY: JK			
CHK. BY: LFS			
DRAWING NO.: TX-4121			
SHEET 5 OF 11			



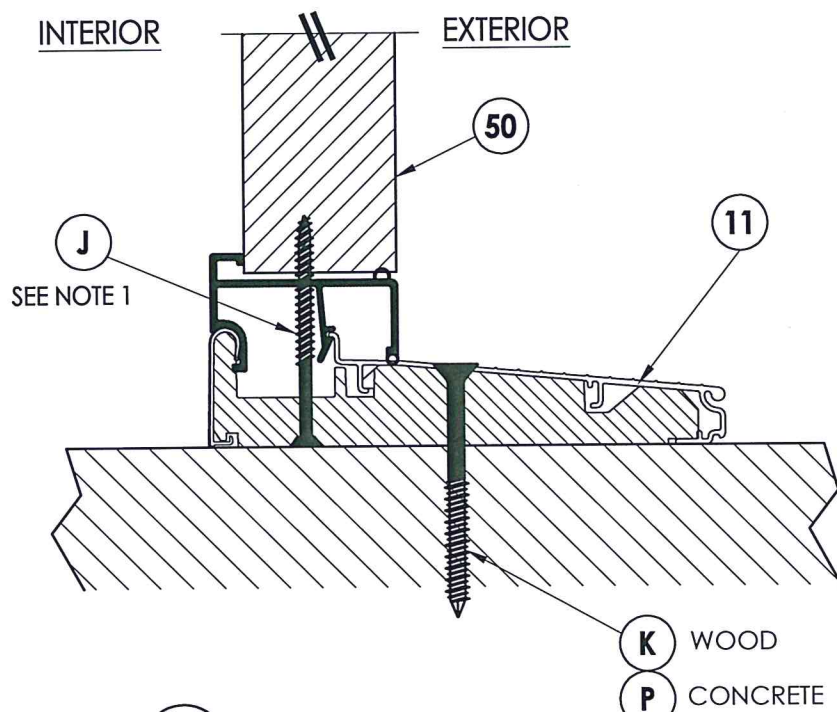
Z:\Clients\Plastpro, Inc PERMANENT\B - TDI\TDI - DR 488\Drawings\TX-4121.dwg



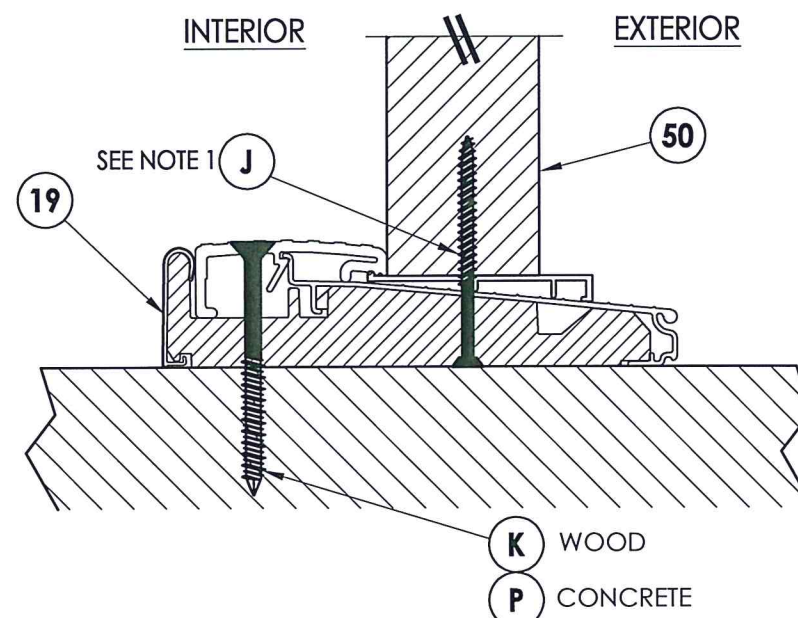
**1** VERTICAL CROSS SECTION  
**6** Inswing shown



**2** VERTICAL CROSS SECTION  
**6** Outswing shown

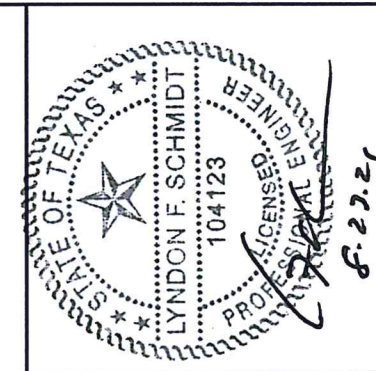


**3** VERTICAL CROSS SECTION  
**6** Inswing shown



**4** VERTICAL CROSS SECTION  
**6** Outswing shown

NOTE:  
1. Spacing for item J:  
3.75" from each end.



Documents Prepared By: Lyndon F. Schmidt, P.E.  
TEXAS P.E. #104123

**RW** BUILDING CONSULTANTS, INC.  
P.O. Box 230 Valrico FL 33595  
Phone No.: 813.659.9197

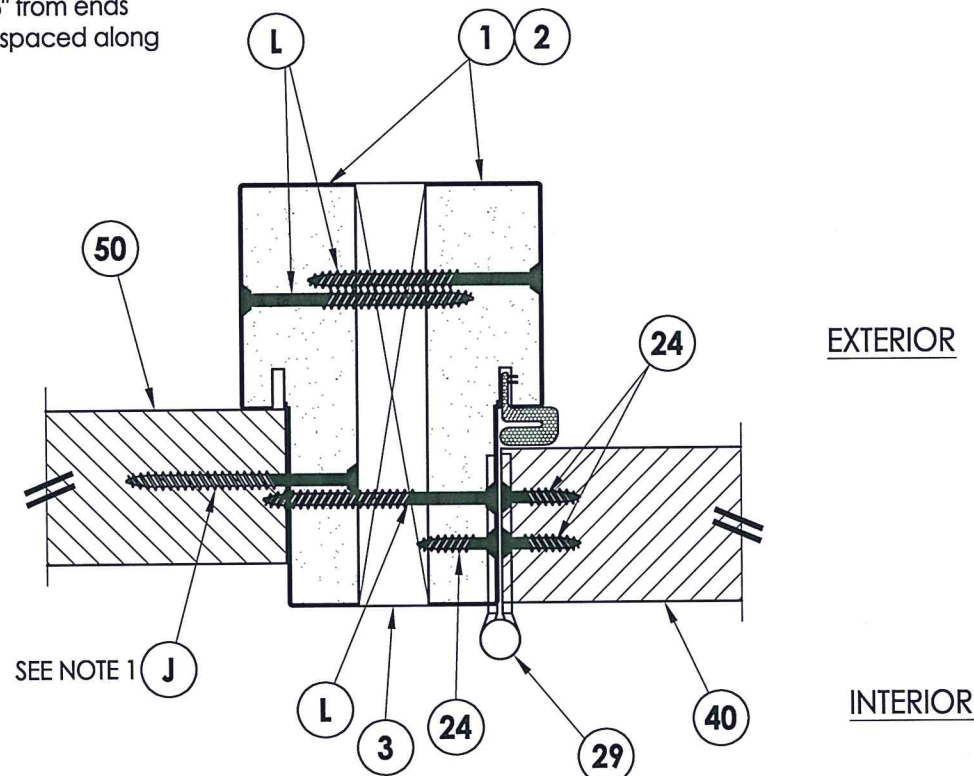
TEXAS BOARD OF PROFESSIONAL ENGINEERS  
CERTIFICATE OF REGISTRATION # F-11852

PRODUCT:	PLASTPRO FIBERGLASS DOOR	
PART OR ASSEMBLY:	VERTICAL CROSS SECTIONS	
NO.	DATE	BY
2	8/19/20	LFS
1	5/27/20	LFS
REVISE B.O.M./COMPONENTS SHT. UPDATE TO 2018 IBC/IRC CODE		
REVISIONS		
DATE:	1/17/11	
SCALE:	N.T.S.	
DWG. BY:	JK	
CHK. BY:	LFS	
DRAWING NO.:	TX-4121	
SHEET	6 OF 11	

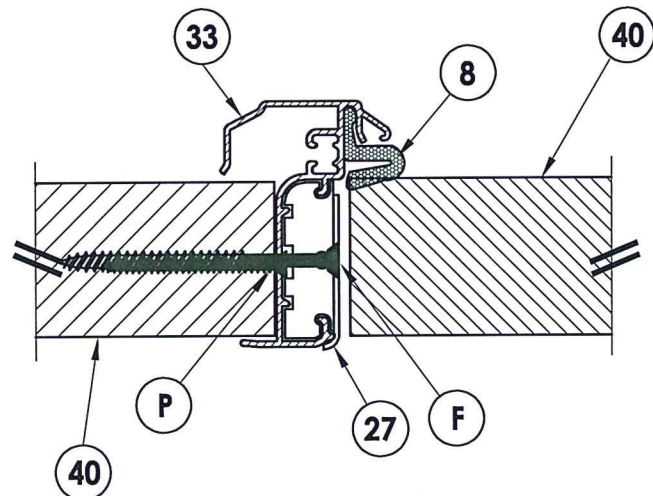


**NOTE:**

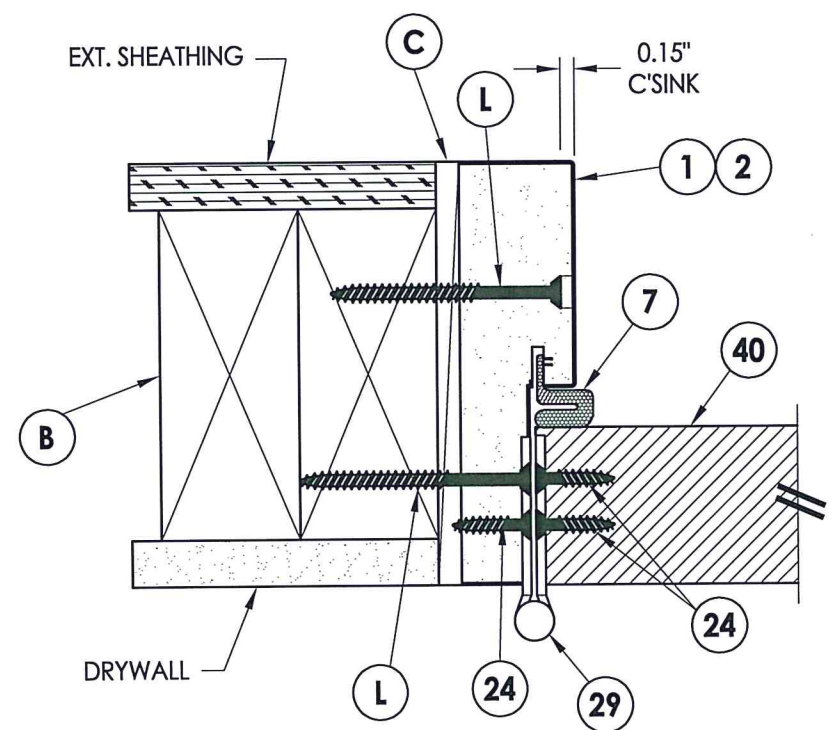
1. Spacing for item J: 6" from ends and 4 more equally spaced along sidelite (6 total).



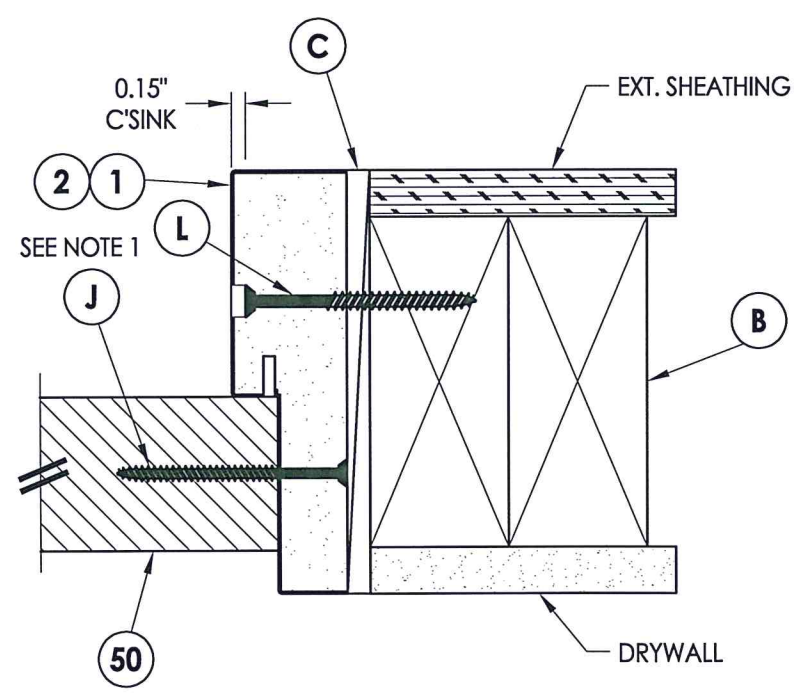
**1** HORIZONTAL CROSS SECTION  
**7** Inswing shown - outswing also approved



**2** HORIZONTAL CROSS SECTION  
**7** Inswing shown - outswing also approved



**4** HORIZONTAL CROSS SECTION  
**7** Inswing shown - outswing also approved



**3** HORIZONTAL CROSS SECTION  
**7** Inswing shown - outswing also approved



Documents Prepared By: Lyndon F. Schmidt, P.E.  
 TEXAS P.E. #104123

**RW** BUILDING CONSULTANTS, INC.  
 P.O. Box 230 Valrico FL, 33595  
 Phone No.: 813.659.9197

TEXAS BOARD OF PROFESSIONAL ENGINEERS  
 CERTIFICATE OF REGISTRATION # F-11852

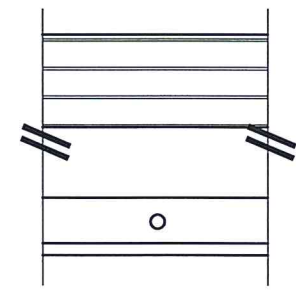
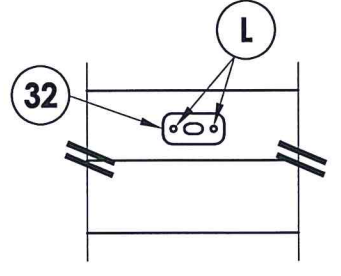
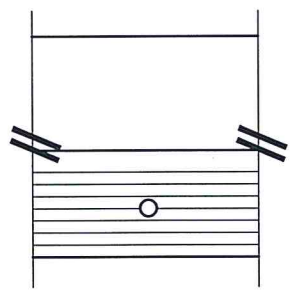
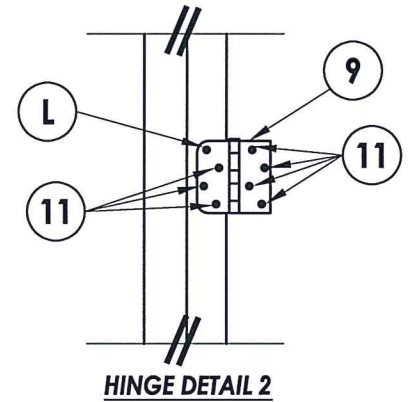
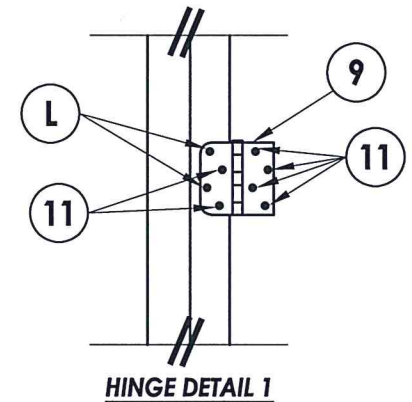
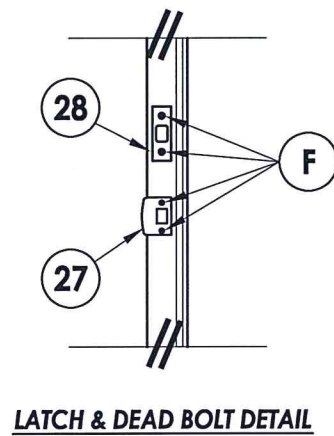
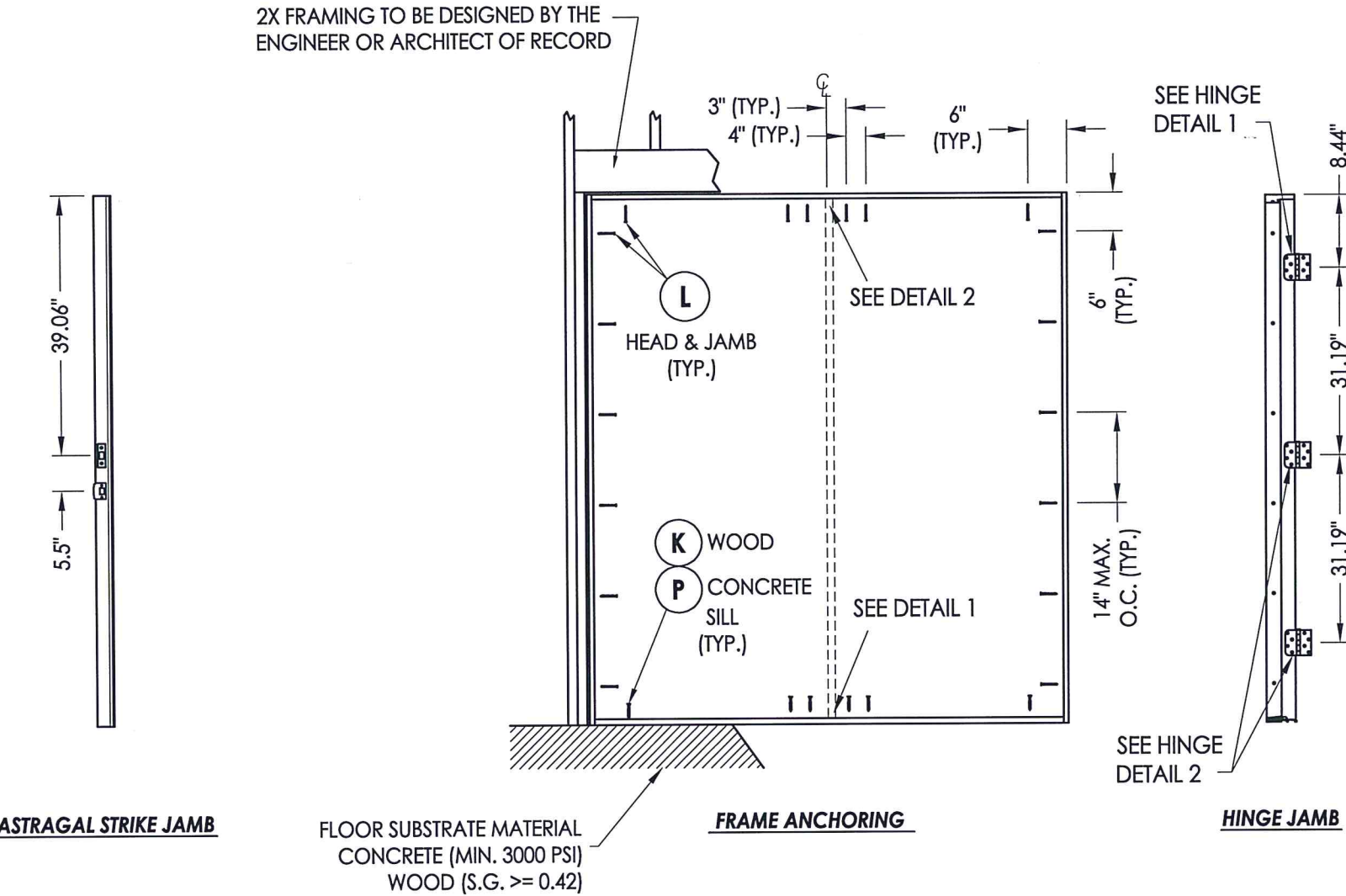
PRODUCT: PLASTPRO FIBERGLASS DOOR  
 PART OR ASSEMBLY: HORIZONTAL CROSS SECTIONS

NO.	DATE	REVISIONS	BY
2	8/19/20	REVISE B.O.M./COMPONENTS SHT.	LFS
1	5/27/20	UPDATE TO 2018 IBC/IRC CODE	LFS

DATE: 1/17/11  
 SCALE: N.T.S.  
 DWG. BY: JK  
 CHK. BY: LFS  
 DRAWING NO.: TX-4121  
 SHEET 7 OF 11



Z:\Clients\Plastpro, Inc PERMANENT\B - TD\ITDI - DR 488\Drawings\TX-4121.dwg



**CONCRETE ANCHOR NOTES:**

- Concrete anchor locations at the corners may be adjusted to maintain the min. edge distance to mortar joints.
- Concrete anchor locations noted as "MAX. ON CENTER" must be adjusted to maintain the min. edge distance to mortar joints, additional concrete anchors may be required to ensure the "MAX. ON CENTER" dimension are not exceeded.
- Concrete anchor table:

ANCHOR TYPE	ANCHOR SIZE	MIN. EMBEDMENT	MIN. CLEARANCE TO MASONRY EDGE	MIN. CLEARANCE TO ADJACENT ANCHOR
ITW BUILDEX TAPCON®	1/4"	1-3/4"	2"	4"
ELCO ULTRACON®	1/4"	1-3/4"	1"	4"

- Concrete: 3,000 psi min. conforming to ACI 301.

**WOOD SCREW INSTALLATION NOTES:**

- Maintain a minimum 5/8" edge distance, 1" end distance, & 1" o.c. spacing of wood screws to prevent the splitting of wood.



Documents Prepared By: Lyndon F. Schmidt, P.E.  
TEXAS P.E. #104123

**RW** BUILDING CONSULTANTS, INC.  
P.O. Box 230 Valrico FL 33595  
Phone No.: 813.659.9197

TEXAS BOARD OF PROFESSIONAL ENGINEERS  
CERTIFICATE OF REGISTRATION # F-11852

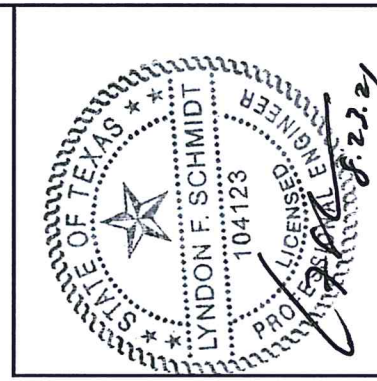
PRODUCT: PLASTPRO INC. FIBERGLASS DOOR  
PART OR ASSEMBLY: BUCK AND FRAME ANCHORING (XX)

NO.	DATE	REVISIONS
2	8/19/20	REVISE B.O.M./COMPONENTS SHT. LFS
1	5/27/20	UPDATE TO 2018 IBC/IRC CODE LFS

DATE: 1/17/11  
SCALE: N.T.S.  
DWG. BY: JK  
CHK. BY: LFS  
DRAWING NO.: TX-4121  
SHEET 8 OF 11



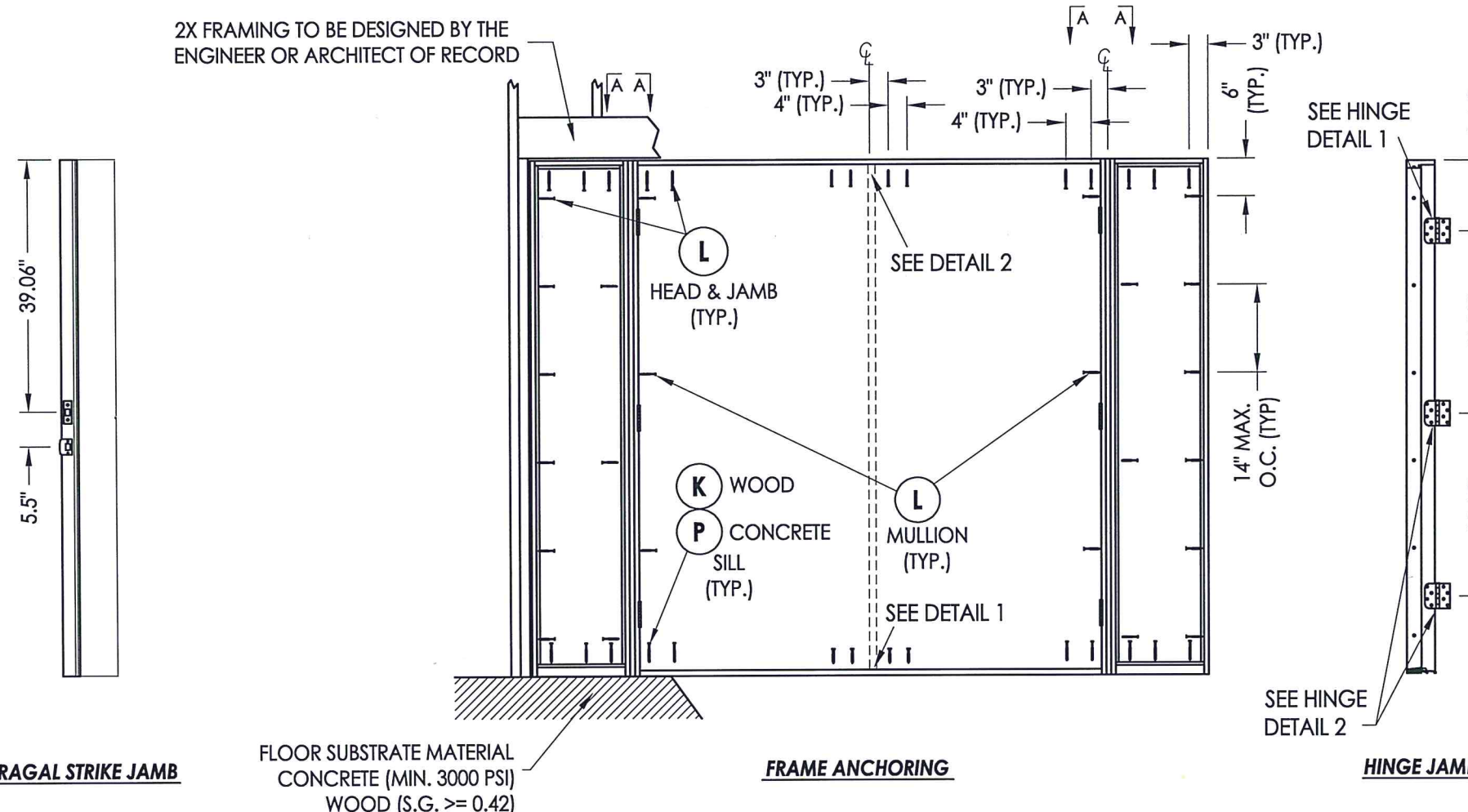
Z:\Clients\Plastpro, Inc PERMANENT\B - TD\TDI - DR 488\Drawings\TX-4121.dwg



Documents Prepared By: Lyndon F. Schmidt, P.E.  
TEXAS P.E. #104123

**RW** BUILDING CONSULTANTS, INC.  
P.O. Box 230 Valrico FL 33595  
Phone No.: 813.659.9197

TEXAS BOARD OF PROFESSIONAL ENGINEERS  
CERTIFICATE OF REGISTRATION # F-11852

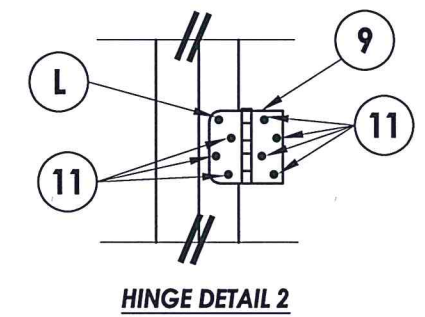
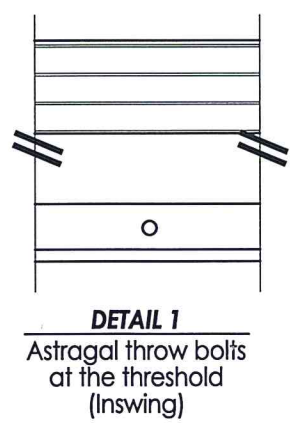
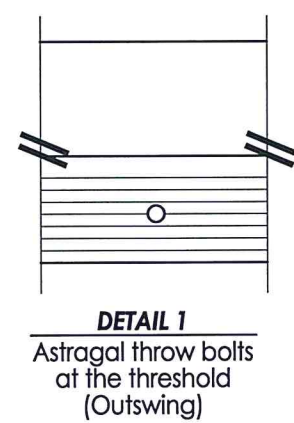
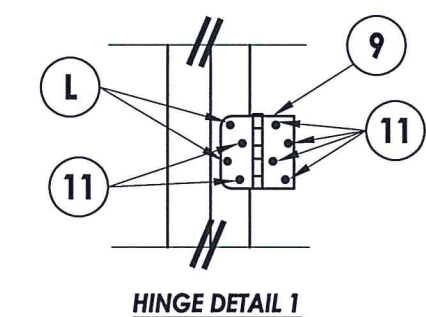
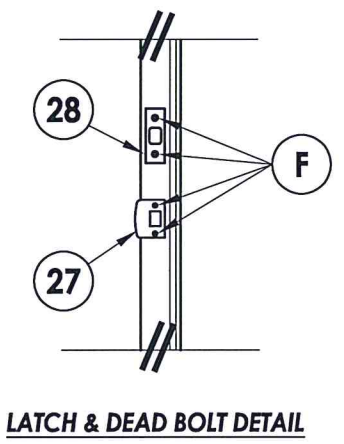
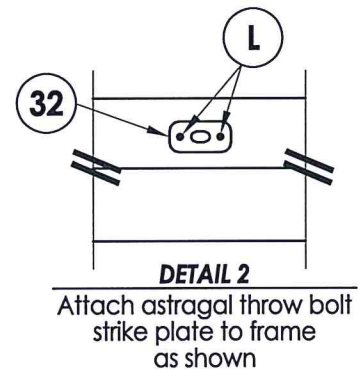
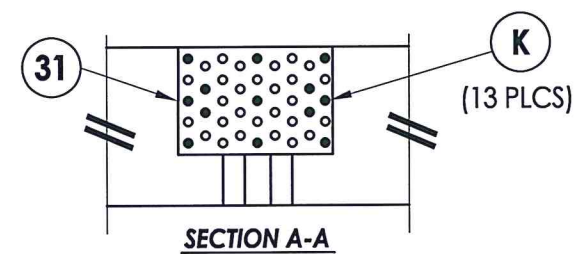


**ASTRAGAL STRIKE JAMB**

FLOOR SUBSTRATE MATERIAL  
CONCRETE (MIN. 3000 PSI)  
WOOD (S.G. >= 0.42)

**FRAME ANCHORING**

**HINGE JAMB**



**CONCRETE ANCHOR NOTES:**

- Concrete anchor locations at the corners may be adjusted to maintain the min. edge distance to mortar joints.
- Concrete anchor locations noted as "MAX. ON CENTER" must be adjusted to maintain the min. edge distance to mortar joints, additional concrete anchors may be required to ensure the "MAX. ON CENTER" dimension are not exceeded.
- Concrete anchor table:

ANCHOR TYPE	ANCHOR SIZE	MIN. EMBEDMENT	MIN. CLEARANCE TO MASONRY EDGE	MIN. CLEARANCE TO ADJACENT ANCHOR
ITW BUILDEX TAPCON®	1/4"	1-3/4"	2"	4"
ELCO ULTRACON®	1/4"	1-3/4"	1"	4"

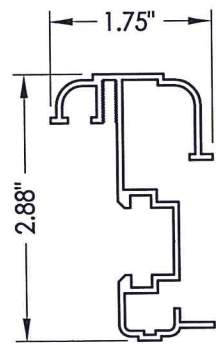
4. Concrete: 3,000 psi min. conforming to ACI 301.

**WOOD SCREW INSTALLATION NOTES:**

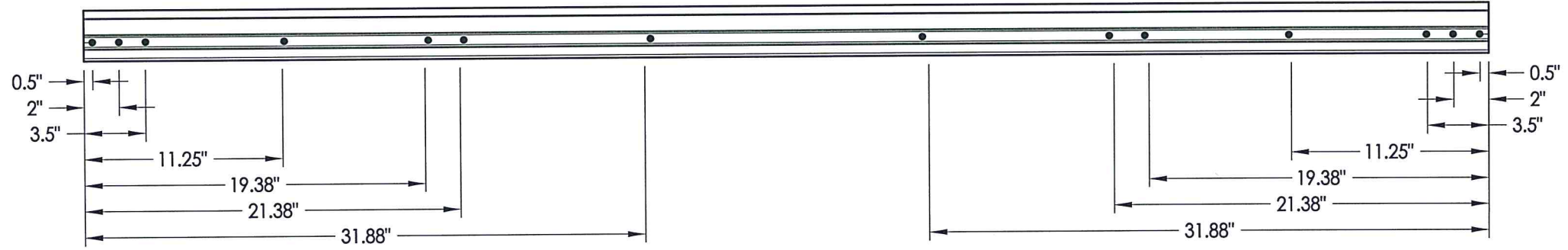
- Maintain a minimum 5/8" edge distance, 1" end distance, & 1" o.c. spacing of wood screws to prevent the splitting of wood.

PRODUCT:		PLASTPRO FIBERGLASS DOOR	
PART OR ASSEMBLY:		BUCK AND FRAME ANCHORING (OXXO)	
NO.	DATE	REVISIONS	
2	8/19/20	REVISE B.O.M./COMPONENTS SHT.	LFS
1	5/27/20	UPDATE TO 2018 IBC/IRC CODE	LFS
			BY
DATE: 1/17/11			
SCALE: N.T.S.			
DWG. BY: JK			
CHK. BY: LFS			
DRAWING NO.: TX-4121			
SHEET 9 OF 11			

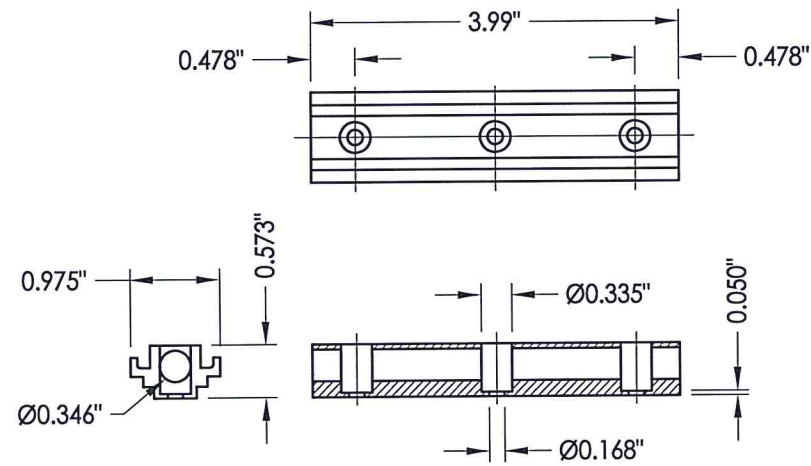




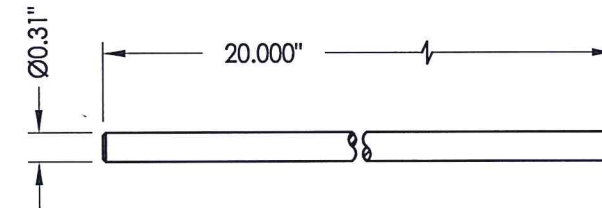
**33** ASTRAGAL  
DLP



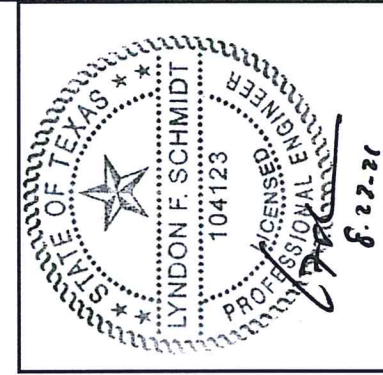
ASTRAGAL SCREW LOCATIONS



**34** CONCEALED STIFFENER



**35** SLIDE BOLT ROD  
Typ. top & bottom of astragal top through 1.98" bottom through 1.98"



Documents Prepared By: Lyndon F. Schmidt, P.E.  
TEXAS P.E. #104123

**RW** BUILDING CONSULTANTS, INC.  
P.O. Box 230 Vairico FL 33595  
Phone No.: 813.659.9197  
TEXAS BOARD OF PROFESSIONAL ENGINEERS  
CERTIFICATE OF REGISTRATION # F-11852

PRODUCT: PLASTPRO FIBERGLASS DOOR  
PART OR ASSEMBLY: ASTRAGAL DETAILS

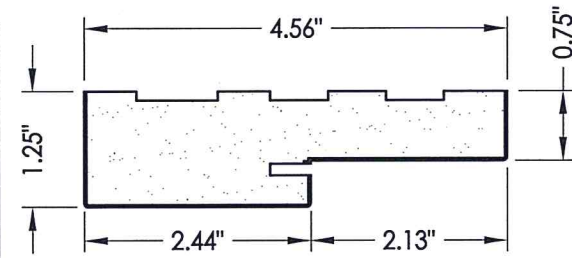
NO.	DATE	REVISIONS
2	8/19/20	REVISE B.O.M./COMPONENTS SHT.
1	5/27/20	UPDATE TO 2018 IBC/IRC CODE
		BY

DATE: 1/17/11  
SCALE: N.T.S.  
DWG. BY: JK  
CHK. BY: LFS  
DRAWING NO.: TX-4121  
SHEET 10 OF 11

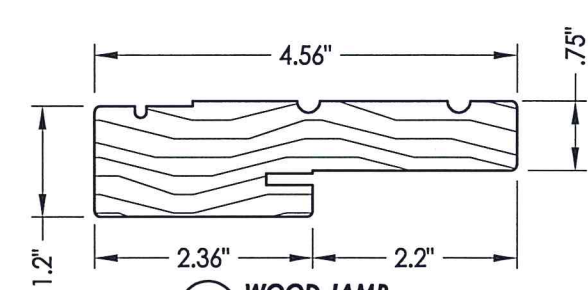


Z:\Clients\Plastpro, Inc. PERMANENT\B - TD\TD1 - DR 488\Drawings\TX-4121.dwg

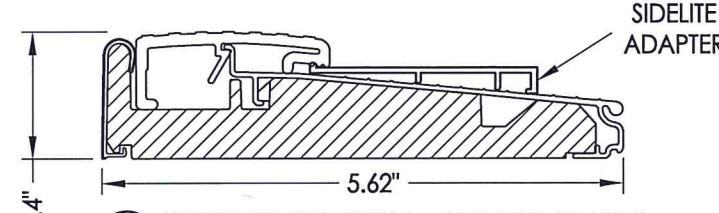
BILL OF MATERIALS		
ITEM #	DESCRIPTION	MATERIAL
A	2X HEADER FRAMING (SG >= 0.42)	WOOD
B	2X BUCK (SG >= 0.42)	WOOD
C	1/4" MAX. SHIM SPACE	-
F	#9 X 3" PFH WOOD SCREW	STEEL
J	#9 X 2-1/2" WOOD SCREW	STEEL
K	#8 X 1-1/4" PFH WOOD SCREW	STEEL
L	#10 X 2-1/2" PFH WOOD SCREW (1.15" MIN. EMBEDMENT)	STEEL
M	#10 X 2-1/2" PFH WOOD SCREW	STEEL
P	1/4" PFH DeWALT OR ITW CONCRETE SCREW (1-3/4" MIN. EMB.)	STEEL
1	POLY FIBER JAMB	COMP.
2	WOOD JAMB (FINGER JOINTED PINE)	WOOD
3	1X MULLION REINFORCEMENT (SG >= 0.55)	WOOD
4	#8 X 1-1/2" PPH SMS	STEEL
5	INT. FRAME	HP POLY
6	EXT. FRAME	HP POLY
7	FORCE 5 WEATHER STRIPPING BY ENDURA	FOAM
8	SWEEP	VINYL
9	ALUMINUM SPACER	ALUMINUM
10	COMPRESSION WEATHER STRIP (QLON)	STEEL
11	#9 X 3/4" PFH WOOD SCREW	STEEL
12	HOMERUN SEALANT	-
13	READISEAL SEALANT	-
24	#9 X 3/4" PFH WOOD SCREW	STEEL
27	LATCH STRIKE PLATE	STEEL
28	DEADBOLT STRIKE PLATE	STEEL
29	4" X 4" HINGE	STEEL
31	TIE PLATE	STEEL
32	ASTRAGAL STRIKE PLATE	STEEL
33	EXTRUDED ALUMINUM ASTRAGAL BY DLP	ALUM
34	CONCEALED STIFFENER	ALUM
35	SLIDE BOLT ROD	ALUM
40	DOOR PANEL	-
42	INSWING THRESHOLD w/ SIDELITE ADAPTER	ALUM/COMP
43	OUTSWING THRESHOLD	ALUM/COMP
44	INSWING THRESHOLD	ALUM/COMP
45	OUTSWING THRESHOLD w/ SIDELITE ADAPTER	ALUM/COMP
50	SIDELITE PANEL	-



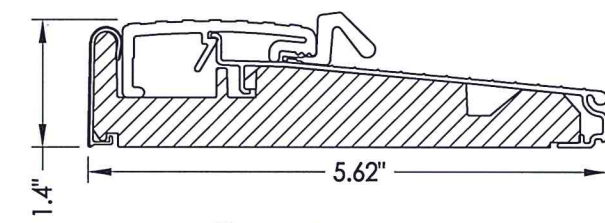
1 POLY FIBER JAMB



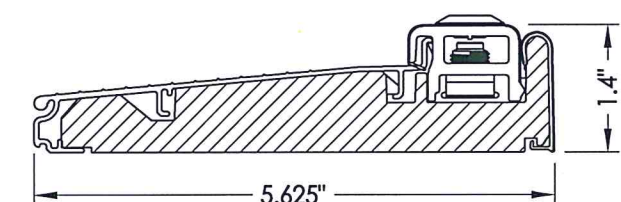
2 WOOD JAMB



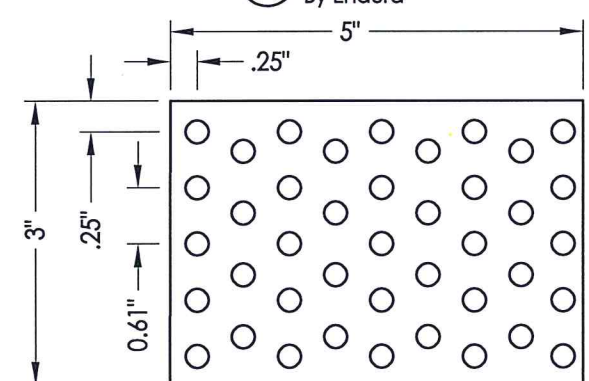
45 OUTSWING THRESHOLD w/ SIDELITE ADAPTER  
By Endura



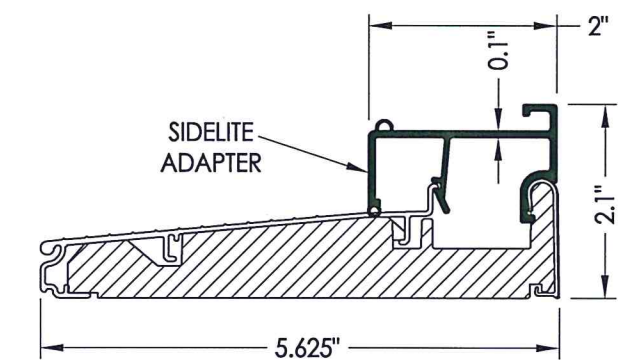
43 OUTSWING THRESHOLD  
By Endura



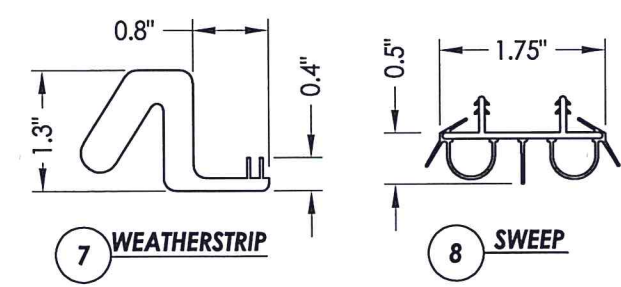
44 INSWING THRESHOLD  
By Endura



31 TIE PLATE

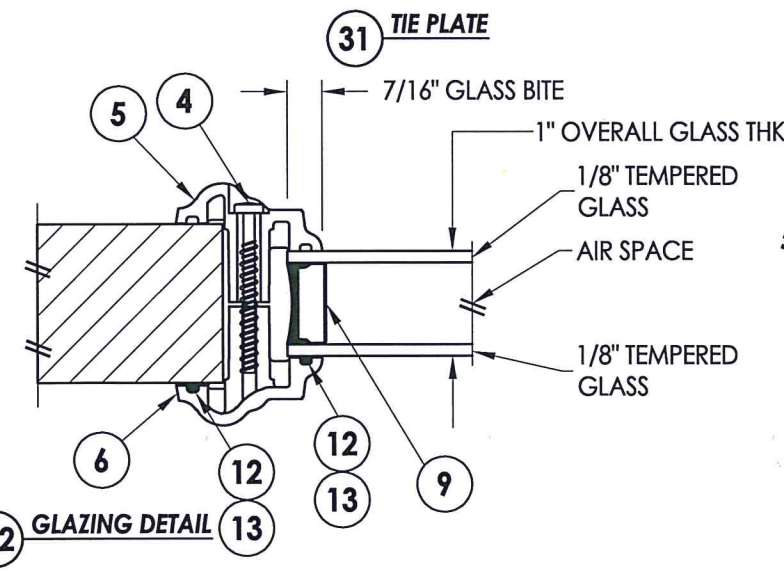


42 INSWING THRESHOLD w/ SIDELITE ADAPTER  
By Endura

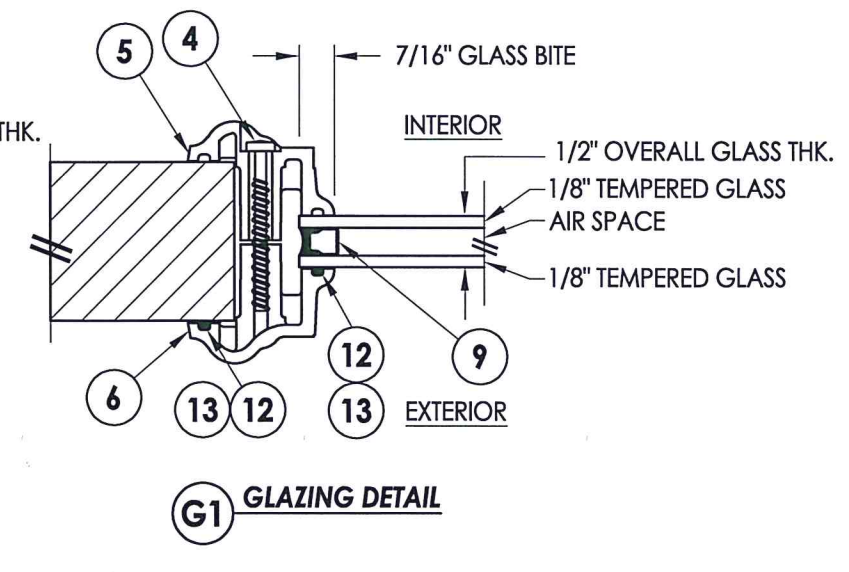


7 WEATHERSTRIP

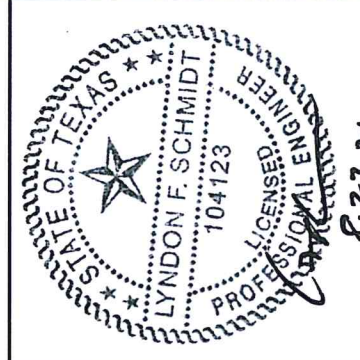
8 SWEEP



G2 GLAZING DETAIL



G1 GLAZING DETAIL



Documents Prepared By: Lyndon F. Schmidt, P.E.  
TEXAS P.E. #104123

R.W. BUILDING CONSULTANTS, INC.  
P.O. Box 230 Valrico FL 33595  
Phone No.: 813.659.9197

© 2011 R.W. BUILDING CONSULTANTS INC.

PRODUCT:	PLASTPRO FIBERGLASS DOOR	
PART OR ASSEMBLY:	BILL OF MATERIALS, COMPONENTS & GLAZING DETAIL	
REVISIONS		
NO.	DATE	BY
2	8/19/20	LFS
1	5/27/20	LFS
UPDATE TO 2018 IBC/IRC CODE		
REVISIONS		
DATE:	1/17/11	
SCALE:	N.T.S.	
DWG. BY:	JK	
CHK. BY:	LFS	
DRAWING NO.:	TX-4121	
SHEET	11 OF 11	