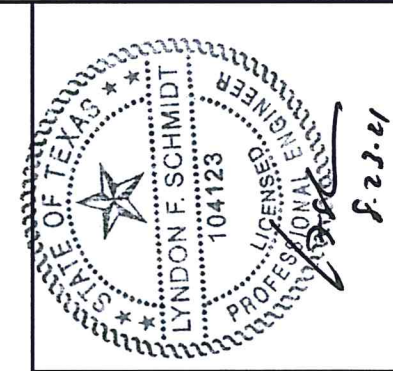


# plastpro

5200 W. CENTURY BLVD.  
LOS ANGELES, CA 90045



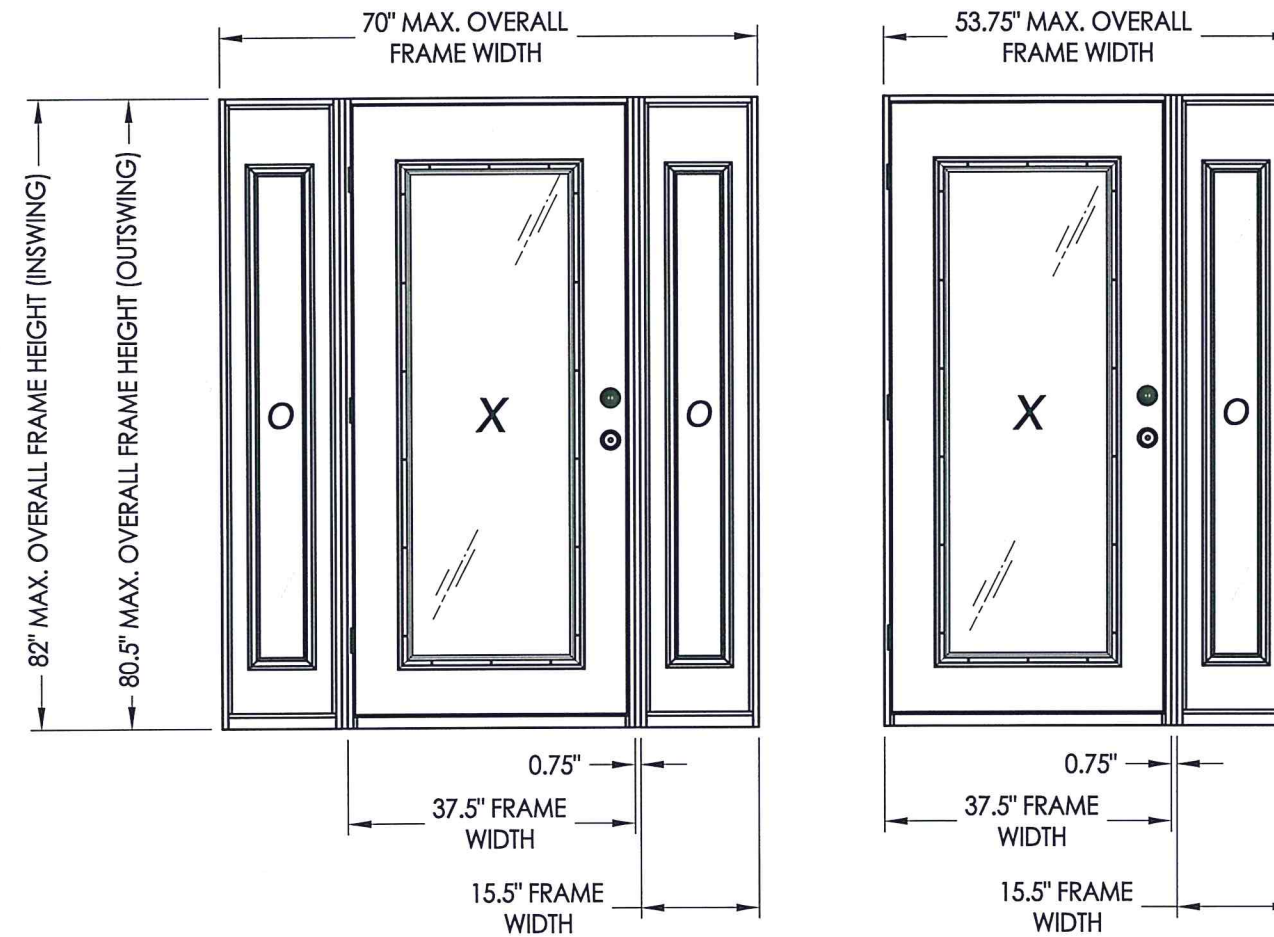
Documents Prepared By: Lyndon F. Schmidt, P.E.  
TEXAS P.E. #104123

**RW** BUILDING CONSULTANTS, INC.  
P.O. Box 230 Vairico FL 33595  
Phone No.: 813.659.9197

TEXAS BOARD OF PROFESSIONAL ENGINEERS  
CERTIFICATE OF REGISTRATION # F-11852

## GLAZED FIBERGLASS SINGLE DOOR w/ SIDELITES

### INSWING / OUTSWING "NON-IMPACT"



#### EVALUATED FOR USE IN THE STATE OF TEXAS

The Fiberglass Door system described herein complies with the 2018 International Residential Code (IRC), Sections R301 & R609 and the 2018 International Building Code (IBC), Sections 1404.13, 1609, 1709.5, 2403 and 2404 subject to the following conditions:

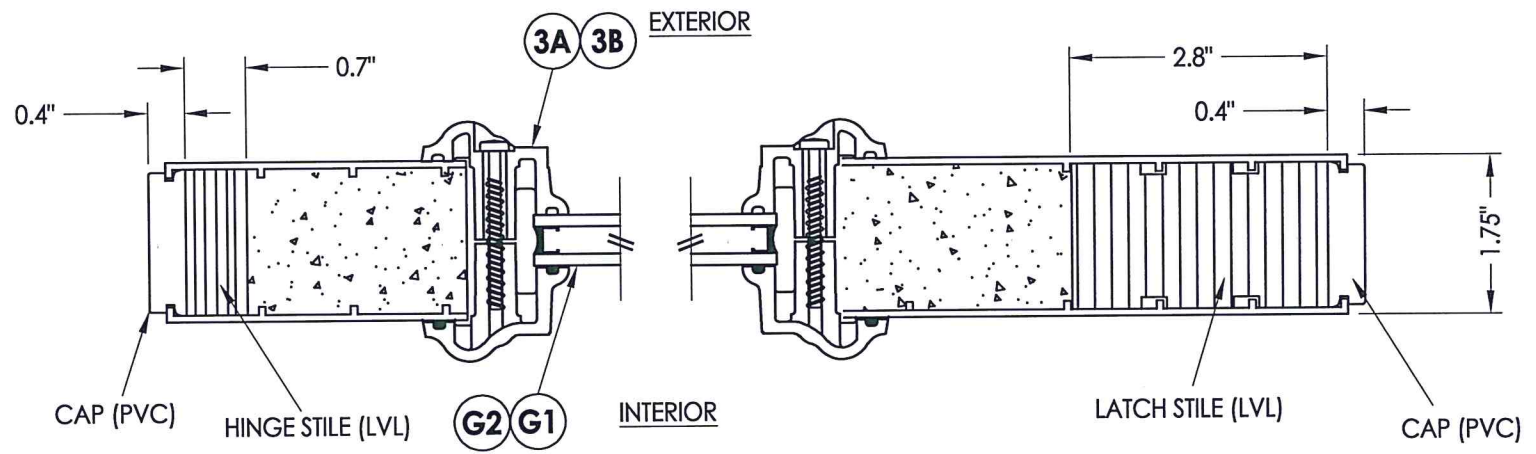
1. Anchors shall be as listed and spaced as shown in the details. Anchor embedment to base material shall be beyond wall dressing or stucco.
2. When used in areas requiring wind-borne debris protection this product is required to be protected with an impact resistant covering that complies with Section R301.2.1.2 of the IRC and Section 1609.1.2 of the IBC.
3. Allowable design pressure requirements must be equal to or less than the design pressure rating shown in the design pressure chart, sheet 1 of this drawing.
4. Conditions not covered by this drawing are subject to further engineering analysis.

#### TABLE OF CONTENTS

SHEET#	DESCRIPTION
1	Typical elevations, design pressures & general notes
2	Door panel details
3	Sidelite panel details
4	Elevations
5	Vertical cross sections
6	Vertical cross sections
7	Horizontal cross sections
8	Frame anchoring
9	Bill of materials, components and glazing details

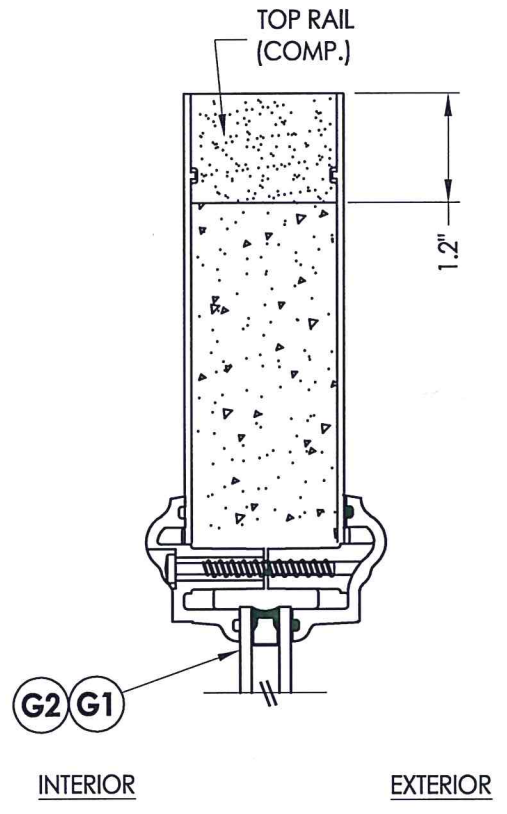
CONFIGURATION	MAX. FRAME DIMENSION	MAX. D.L.O. DIMENSION	DESIGN PRESSURE (PSF) INSWING		DESIGN PRESSURE (PSF) OUTSWING	
			POSITIVE	NEGATIVE	POSITIVE	NEGATIVE
OX or XO	53.75" x 82.0"	21.0" X 63.0"	+45.0	-45.0	+45.0	-45.0
OXO	70.0" x 82.0"	21.0" X 63.0"	+45.0	-45.0	+45.0	-45.0

PRODUCT:	PLASTPRO FIBERGLASS DOOR	
PART OR ASSEMBLY:	TYPICAL ELEVATION, DESIGN PRESSURES & GENERAL NOTES	
NO.	DATE	BY
2	8/19/20	LFS
1	5/27/20	LFS
REVISIONS		
DATE:	1/17/11	
SCALE:	N.T.S.	
DWG. BY:	JK	
CHK. BY:	LFS	
DRAWING NO.:	TX-4120	
SHEET	1 OF 9	

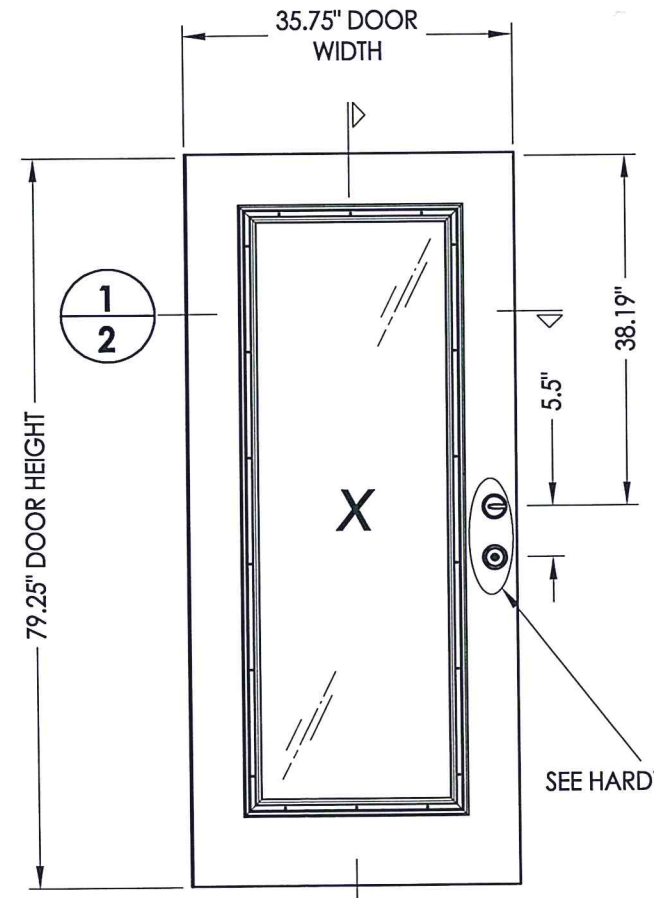


**1**  
**2** HORIZONTAL CROSS SECTION

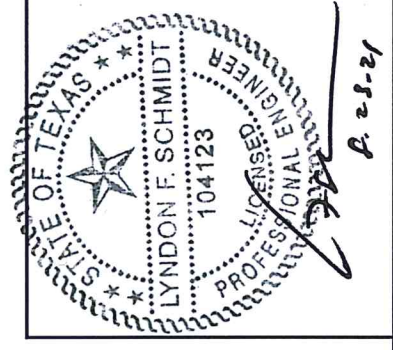
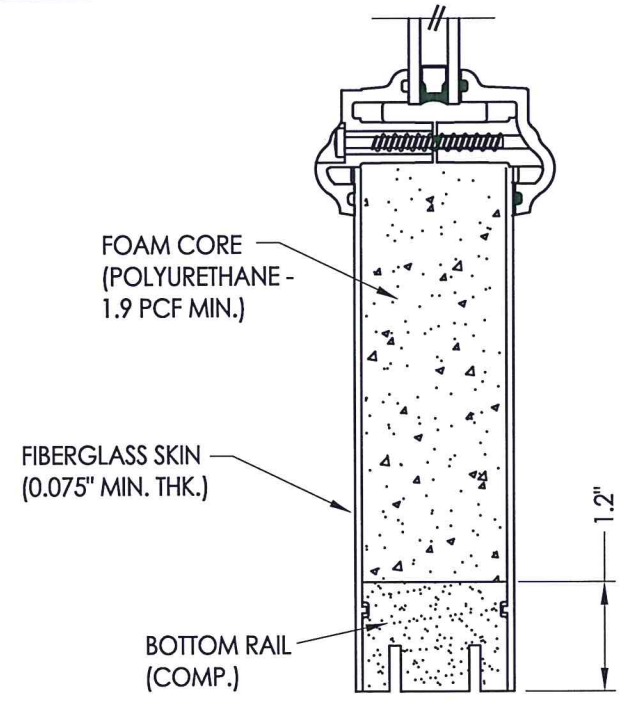
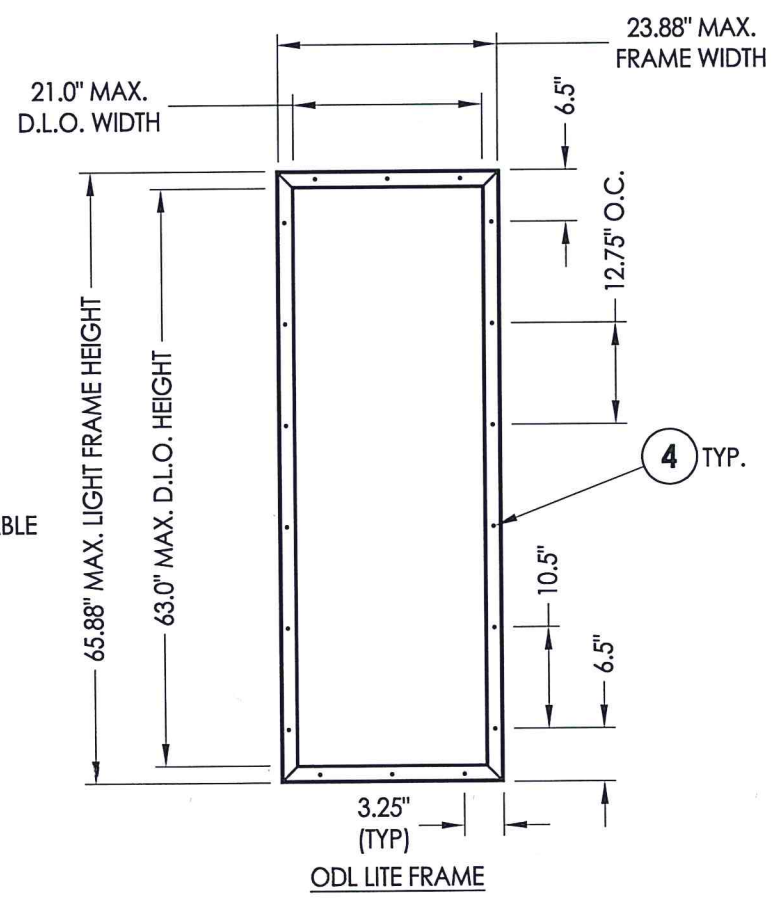
HARDWARE TABLE	
MANUFACTURER	MODEL
KWIKSET	KNOB: SIGNATURE SERIES DEADBOLT: SIGNATURE SERIES (780)
SCHLAGE	KNOB: "F" SERIES (F10) LEVER: "F" SERIES (F10) DEADBOLT: "B" SERIES (B60/62)
SCHLAGE	HANDLE SET W/DEADBOLT: "F" SERIES (F60)



**2**  
**2** VERTICAL CROSS SECTION



**40** DOOR PANEL  
Plastpro  
Fiberglass



Documents Prepared By: Lyndon F. Schmidt, P.E.  
TEXAS P.E. #104123

**RW** BUILDING CONSULTANTS, INC.  
P.O. Box 230 Valrico FL 33595  
Phone No.: 813.659.9197

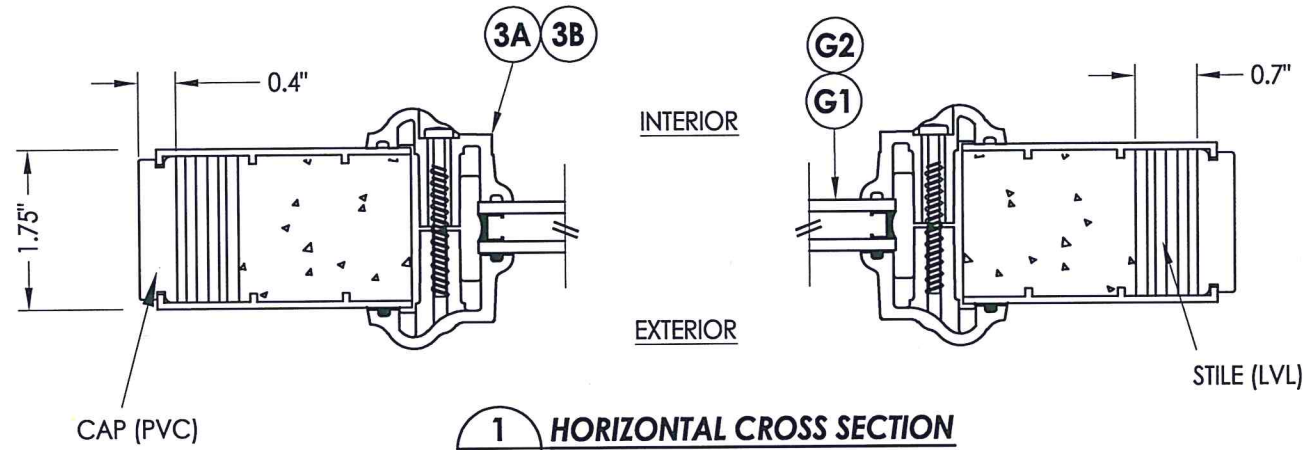
TEXAS BOARD OF PROFESSIONAL ENGINEERS  
CERTIFICATE OF REGISTRATION # F-11852

PRODUCT: PLASTPRO  
FIBERGLASS DOOR

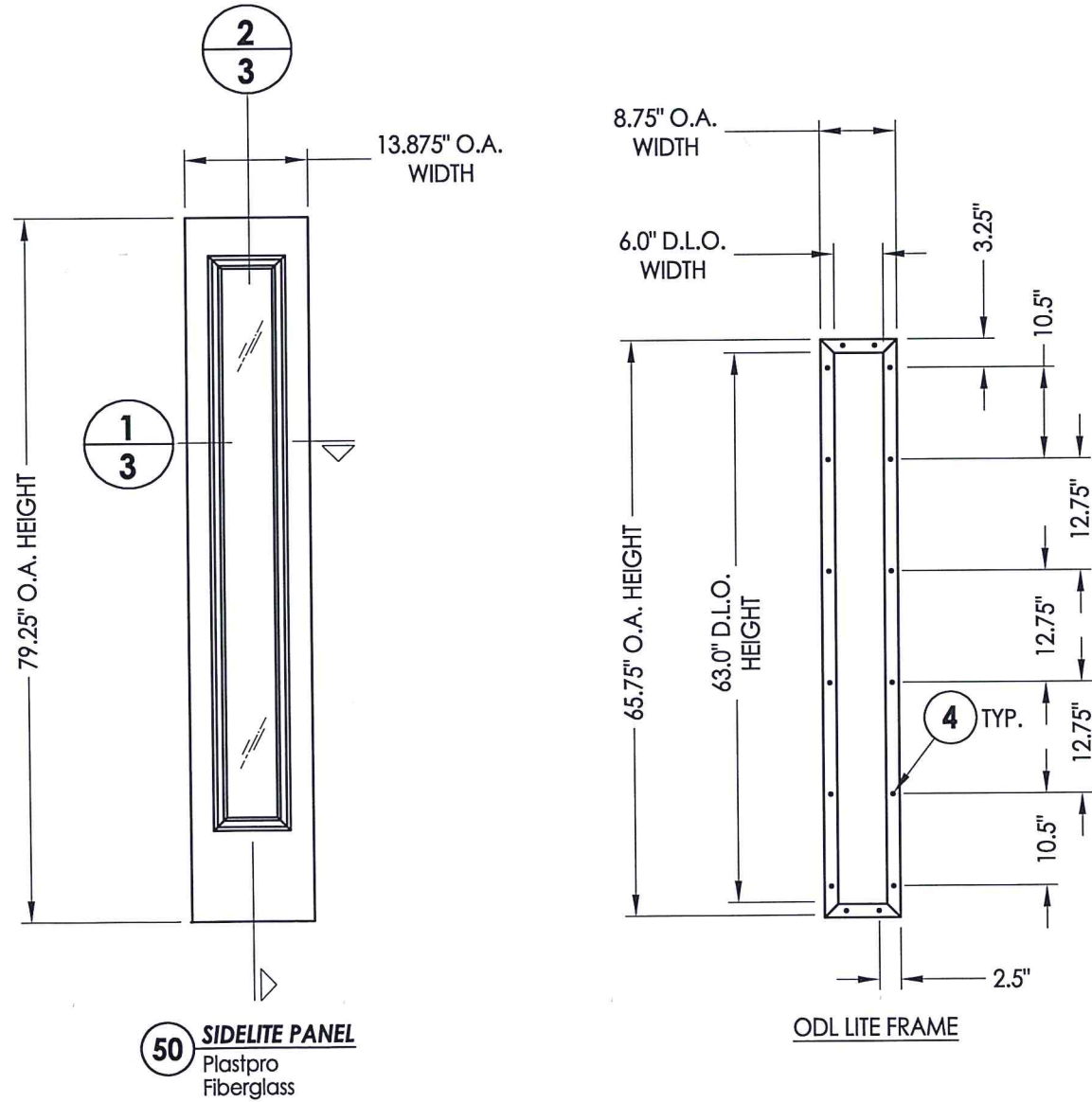
PART OR ASSEMBLY:  
DOOR PANEL DETAILS

NO.	DATE	REVISIONS	BY
2	8/19/20	REVISE COMPONENTS SHEET	LFS
1	5/27/20	UPDATE TO 2018 IBC/IRC CODE	LFS

DATE: 1/17/11  
SCALE: N.T.S.  
DWG. BY: JK  
CHK. BY: LFS  
DRAWING NO.: TX-4120  
SHEET 2 OF 9

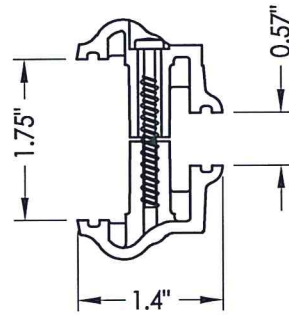


**1**  
**3** HORIZONTAL CROSS SECTION

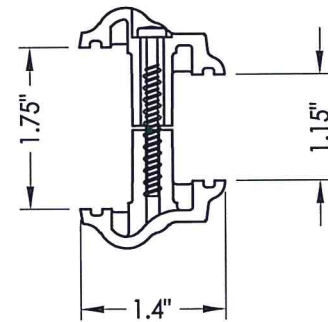


**50** SIDELITE PANEL  
Plastpro  
Fiberglass

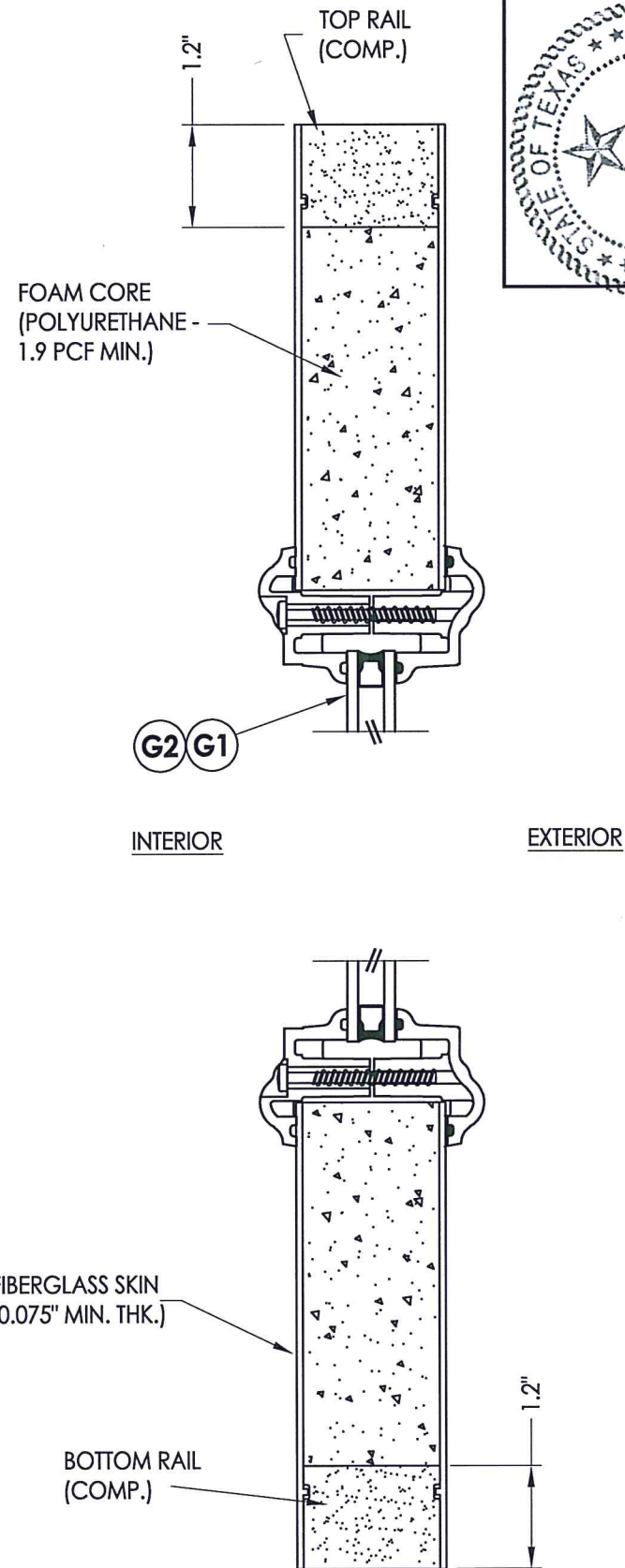
ODL LITE FRAME



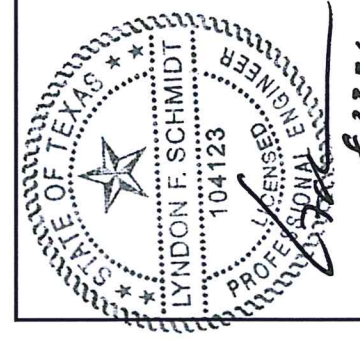
**3A** ODL LITE FRAME  
HP Polypropylene  
1/2" I.G.



**3B** ODL LITE FRAME  
HP Polypropylene  
1" I.G.



**2**  
**3** VERTICAL CROSS SECTION

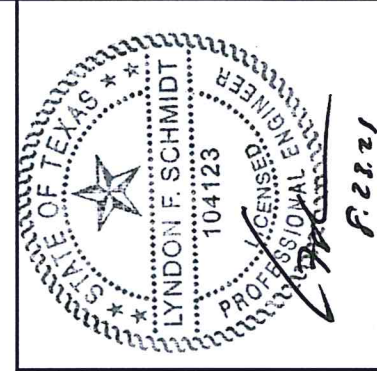
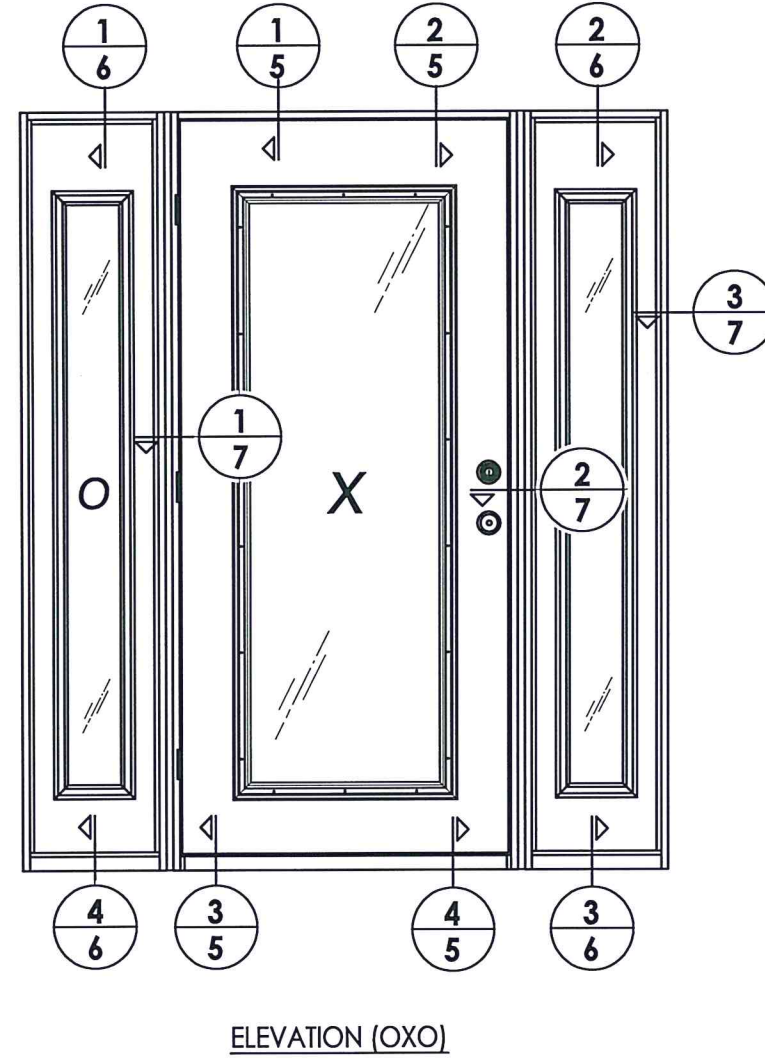
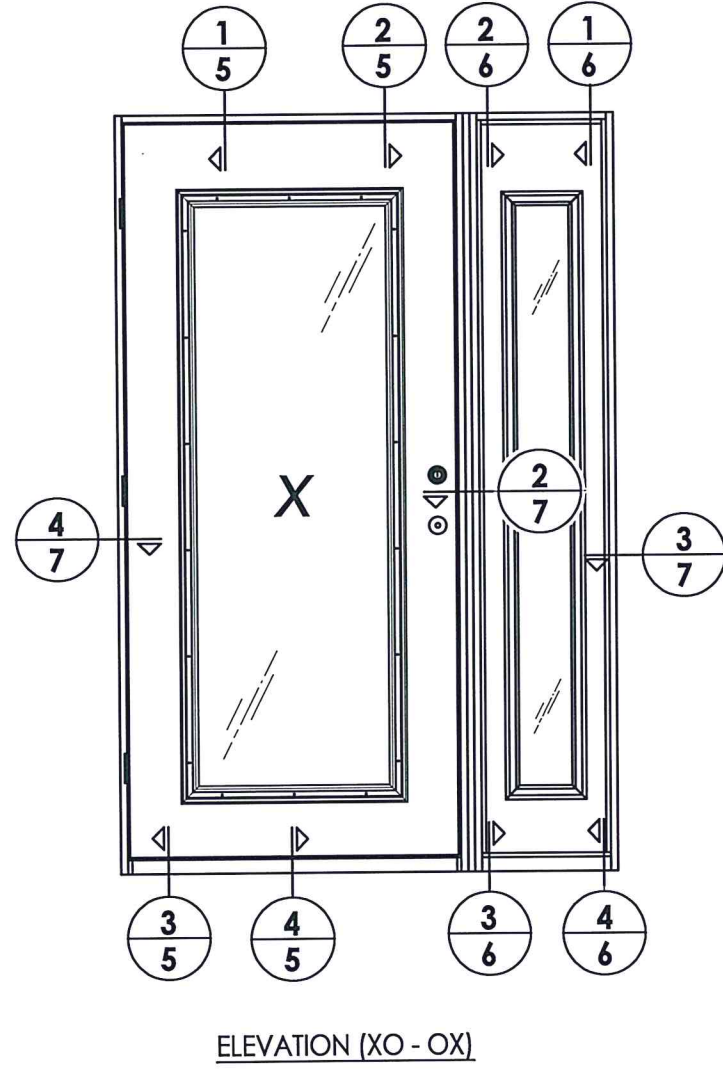


f.2.2.21

Documents Prepared By: Lyndon F. Schmidt, P.E.  
TEXAS P.E. #104123

**RW** BUILDING CONSULTANTS, INC.  
P.O. Box 230 Vairico FL 33595  
Phone No.: 813.659.9197  
TEXAS BOARD OF PROFESSIONAL ENGINEERS  
CERTIFICATE OF REGISTRATION # F-11852

PRODUCT:	PLASTPRO FIBERGLASS DOOR	
PART OR ASSEMBLY:	SIDELITE PANEL DETAILS	
NO.	DATE	REVISIONS
2	8/19/20	REVISE COMPONENTS SHEET
1	5/27/20	UPDATE TO 2018 IBC/IRC CODE
DATE:	1/17/11	
SCALE:	N.T.S.	
DWG. BY:	JK	
CHK. BY:	LFS	
DRAWING NO.:	TX-4120	
SHEET	3 OF 9	



Documents Prepared By: Lyndon F. Schmidt, P.E.  
TEXAS P.E. #104123

**RW** BUILDING CONSULTANTS, INC.  
P.O. Box 230 Valrico FL 33595  
Phone No.: 813.659.9197

TEXAS BOARD OF PROFESSIONAL ENGINEERS  
CERTIFICATE OF REGISTRATION # F-11852

PRODUCT: PLASTPRO FIBERGLASS DOOR

PART OR ASSEMBLY: ELEVATIONS

NO.	DATE	REVISIONS
2	8/19/20	REVISE COMPONENTS SHEET
1	5/27/20	UPDATE TO 2018 IBC/IRC CODE
		LFS
		LFS
		BY

DATE: 1/17/11

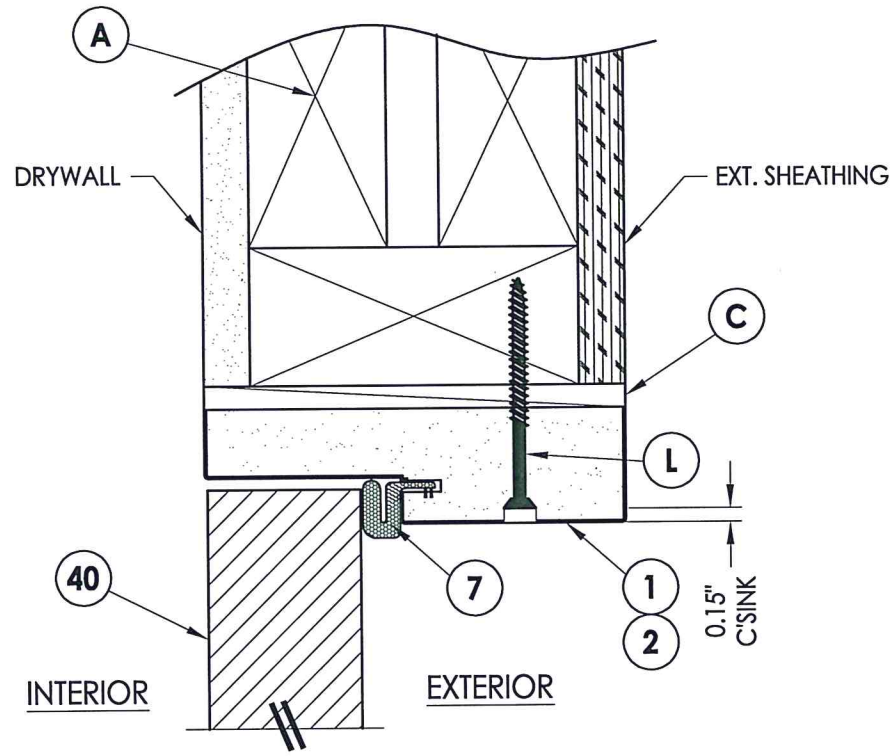
SCALE: N.T.S.

DWG. BY: JK

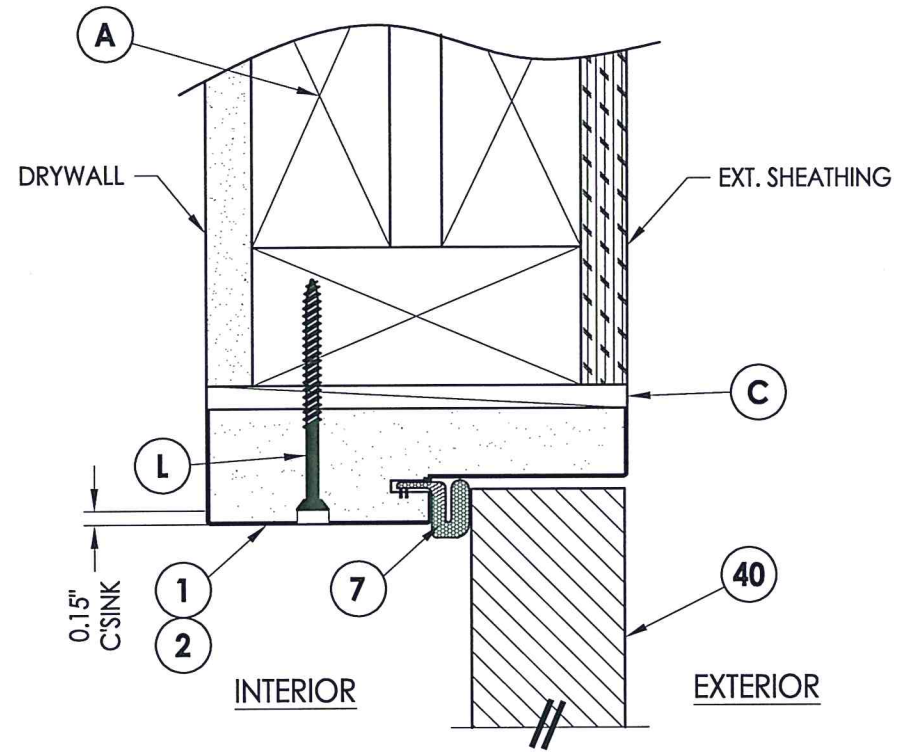
CHK. BY: LFS

DRAWING NO.: TX-4120

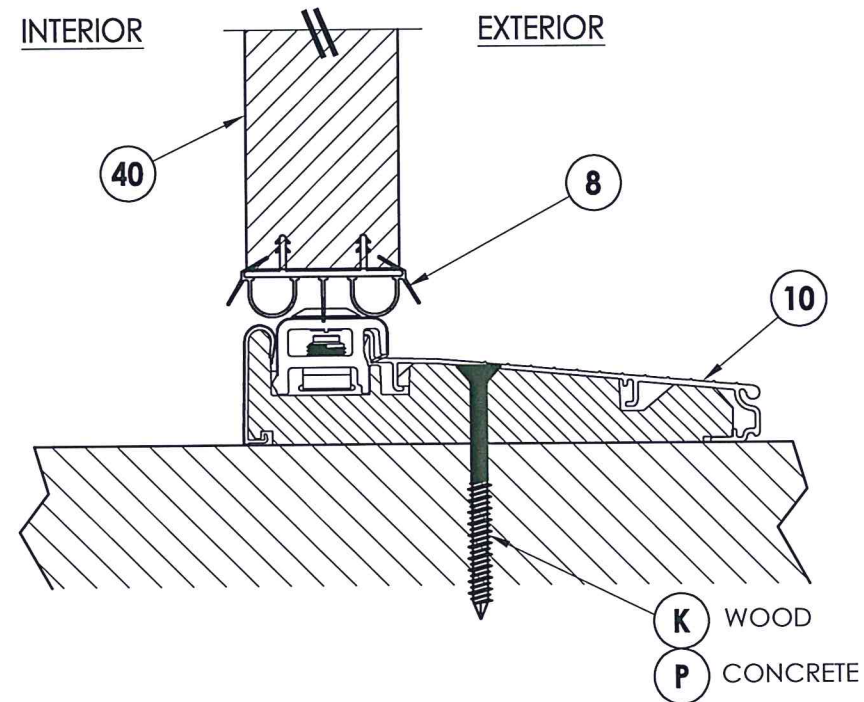
SHEET 4 OF 9



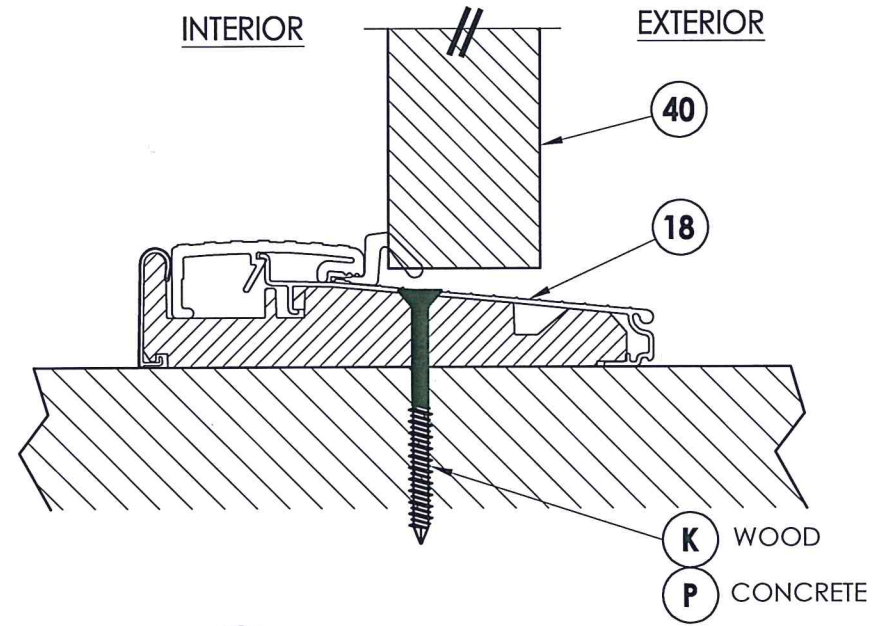
**1** VERTICAL CROSS SECTION  
**5** Inswing shown



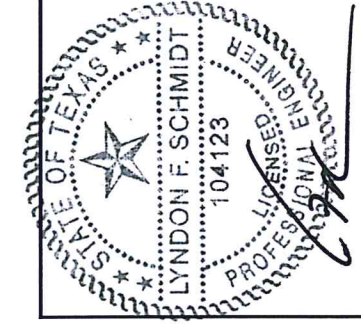
**2** VERTICAL CROSS SECTION  
**5** Outswing shown



**3** VERTICAL CROSS SECTION  
**5** Inswing shown



**4** VERTICAL CROSS SECTION  
**5** Outswing shown



Documents Prepared By: Lyndon F. Schmidt, P.E.  
TEXAS P.E. #104123

**RW** BUILDING CONSULTANTS, INC.  
P.O. Box 230 Valrico FL, 33595  
Phone No.: 813.659.9197

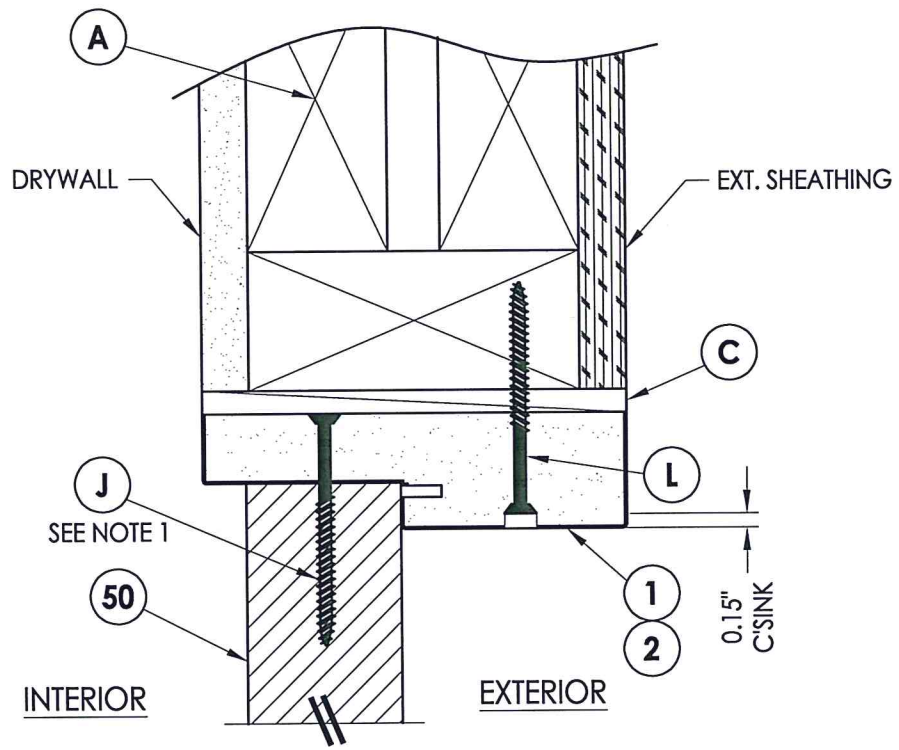
TEXAS BOARD OF PROFESSIONAL ENGINEERS  
CERTIFICATE OF REGISTRATION # F-11852

PRODUCT: PLASTPRO FIBERGLASS DOOR

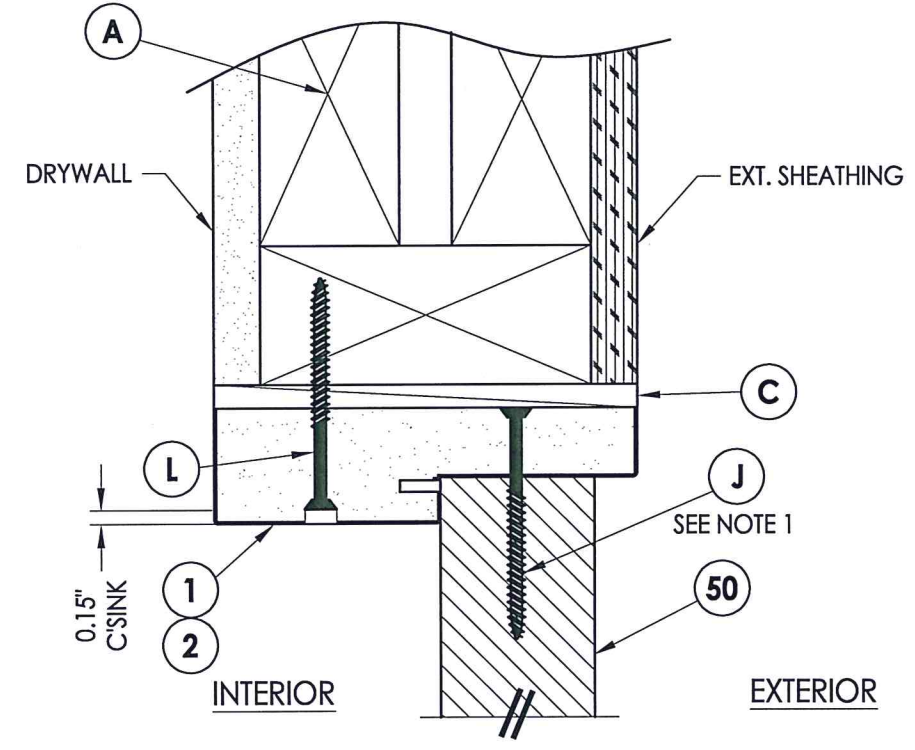
PART OR ASSEMBLY: VERTICAL CROSS SECTIONS

NO.	DATE	REVISIONS
2	8/19/20	REVISE COMPONENTS SHEET
1	5/27/20	UPDATE TO 2018 IBC/IRC CODE

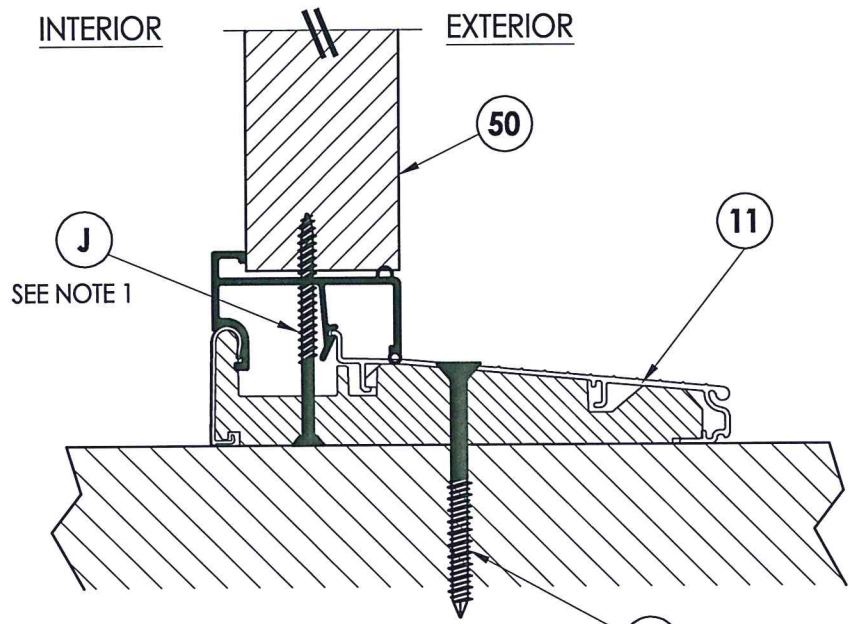
DATE: 1/17/11  
SCALE: N.T.S.  
DWG. BY: JK  
CHK. BY: LFS  
DRAWING NO.: TX-4120  
SHEET 5 OF 9



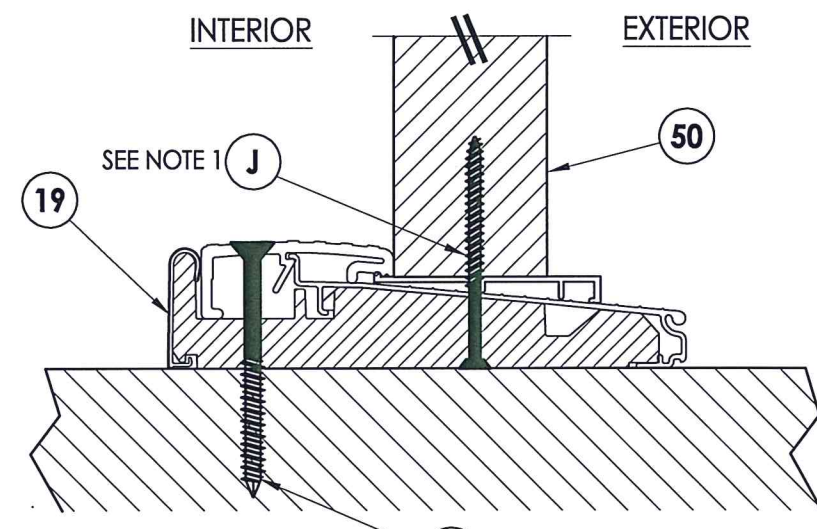
**1** VERTICAL CROSS SECTION  
6 Inswing shown



**2** VERTICAL CROSS SECTION  
6 Outswing shown



**3** VERTICAL CROSS SECTION  
6 Inswing shown

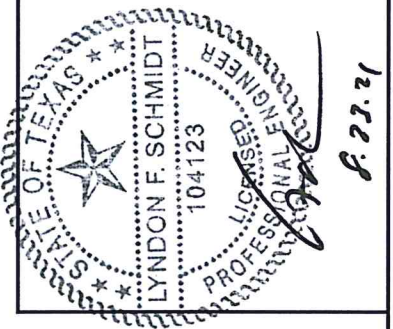


**4** VERTICAL CROSS SECTION  
6 Outswing shown

NOTE:  
1. Spacing for item J:  
3.75" from each end.

**K** WOOD  
**P** CONCRETE

**K** WOOD  
**P** CONCRETE



P. 22.21

Documents Prepared By: Lyndon F. Schmidt, P.E.  
TEXAS P.E. #104123

**RW** BUILDING CONSULTANTS, INC.  
P.O. Box 230 Valrico FL, 33595  
Phone No.: 813.659.9197  
TEXAS BOARD OF PROFESSIONAL ENGINEERS  
CERTIFICATE OF REGISTRATION # F-11852

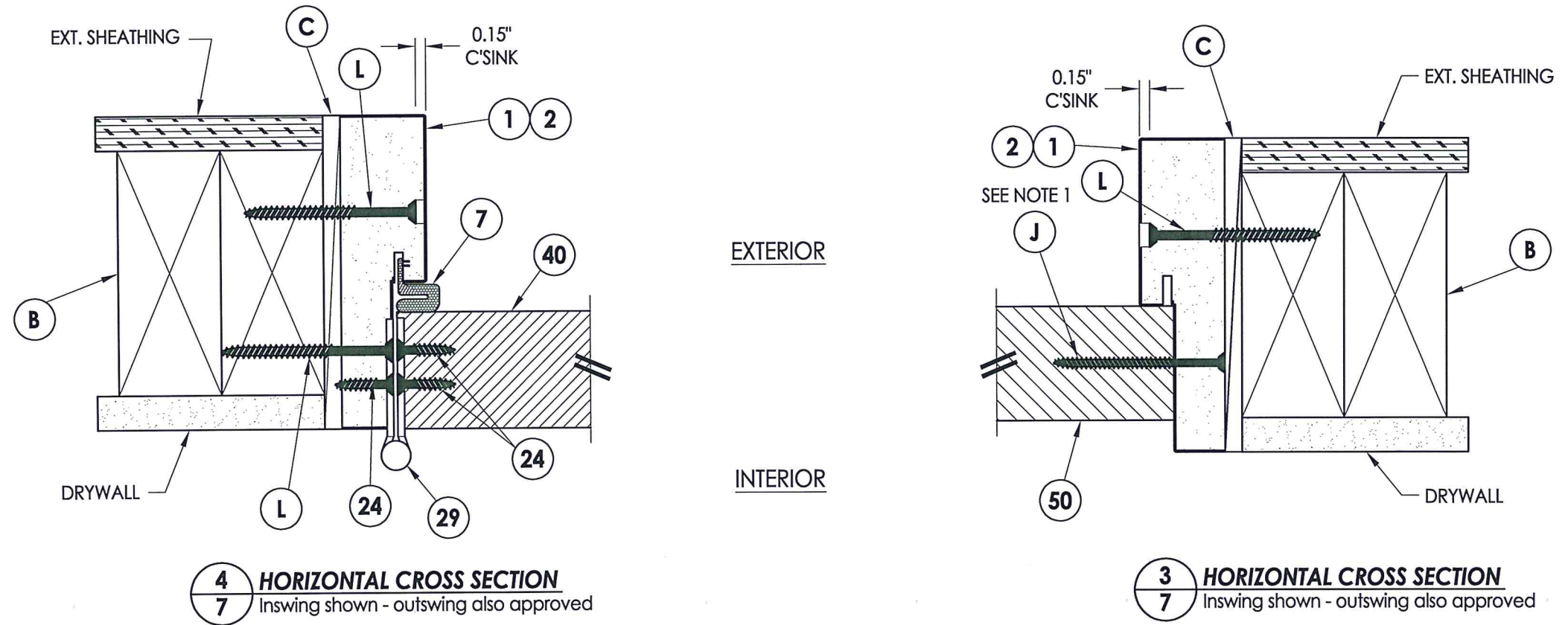
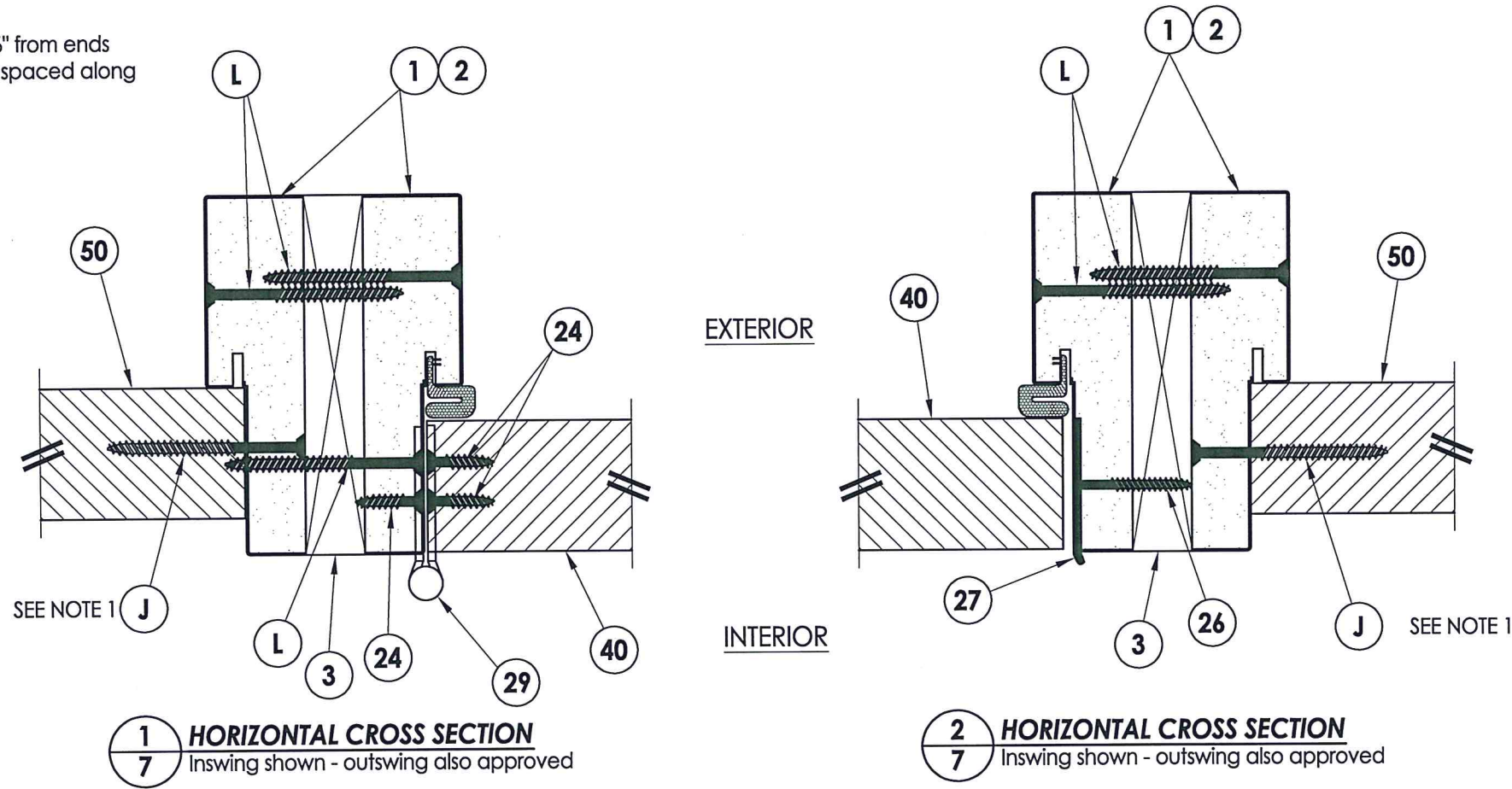
PRODUCT: PLASTPRO FIBERGLASS DOOR  
PART OR ASSEMBLY: VERTICAL CROSS SECTIONS

NO.	DATE	REVISIONS
2	8/19/20	REVISE COMPONENTS SHEET
1	5/27/20	UPDATE TO 2018 IBC/IRC CODE

DATE: 1/17/11  
SCALE: N.T.S.  
DWG. BY: JK  
CHK. BY: LFS  
DRAWING NO.: TX-4120  
SHEET 6 OF 9

**NOTE:**

1. Spacing for item J: 6" from ends and 4 more equally spaced along sidelite (6 total).



Documents Prepared By: Lyndon F. Schmidt, P.E.  
TEXAS P.E. #104123

**RW** BUILDING CONSULTANTS, INC.  
P.O. Box 230 Valrico FL 33595  
Phone No.: 813.659.9197

TEXAS BOARD OF PROFESSIONAL ENGINEERS  
CERTIFICATE OF REGISTRATION # F-11852

PRODUCT: PLASTPRO FIBERGLASS DOOR

PART OR ASSEMBLY: HORIZONTAL CROSS SECTIONS

NO.	DATE	BY
2	8/19/20	LFS
1	5/27/20	LFS

REVISIONS

DATE: 1/17/11

SCALE: N.T.S.

DWG. BY: JK

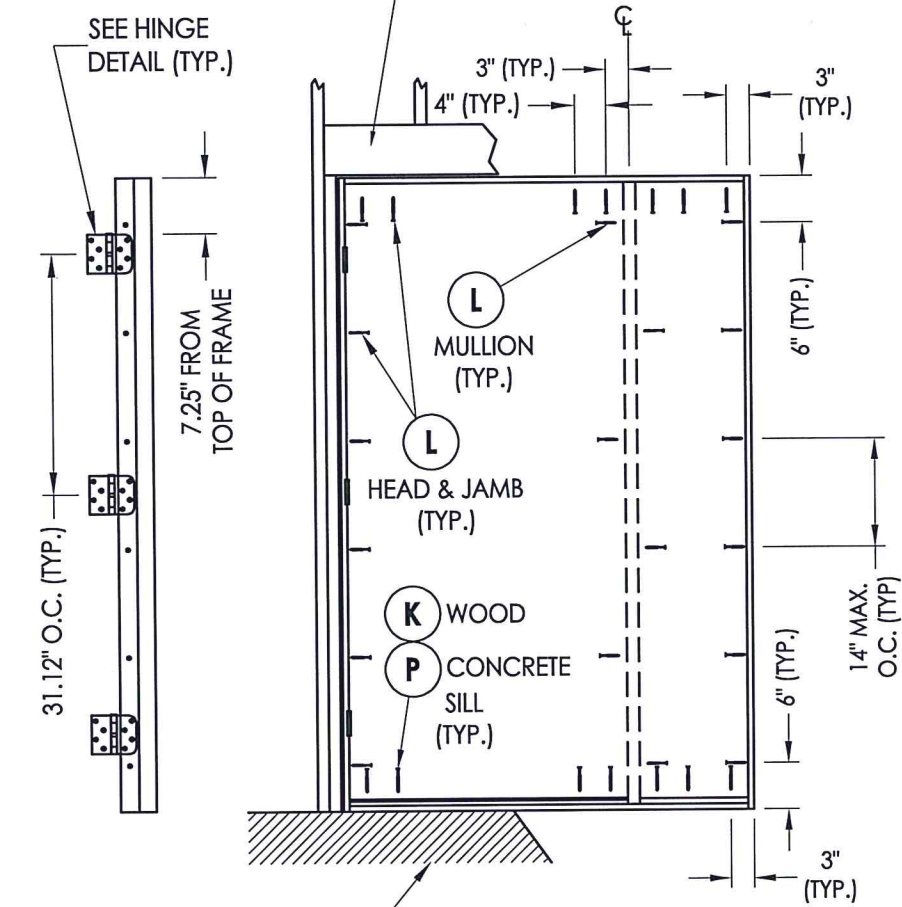
CHK. BY: LFS

DRAWING NO.: TX-4120

SHEET 7 OF 9

Z:\Clients\Plastpro, Inc PERMANENT\B - TDI\TDI - DR 488\Drawings\TX-4120.dwg

2X FRAMING TO BE DESIGNED BY THE ENGINEER OR ARCHITECT OF RECORD

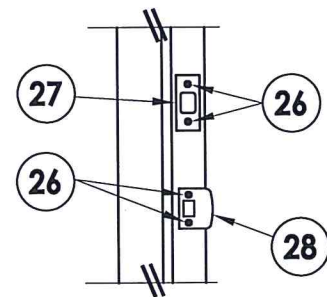


FLOOR SUBSTRATE MATERIAL  
CONCRETE (MIN. 3000 PSI)  
WOOD (S.G. >= 0.42)

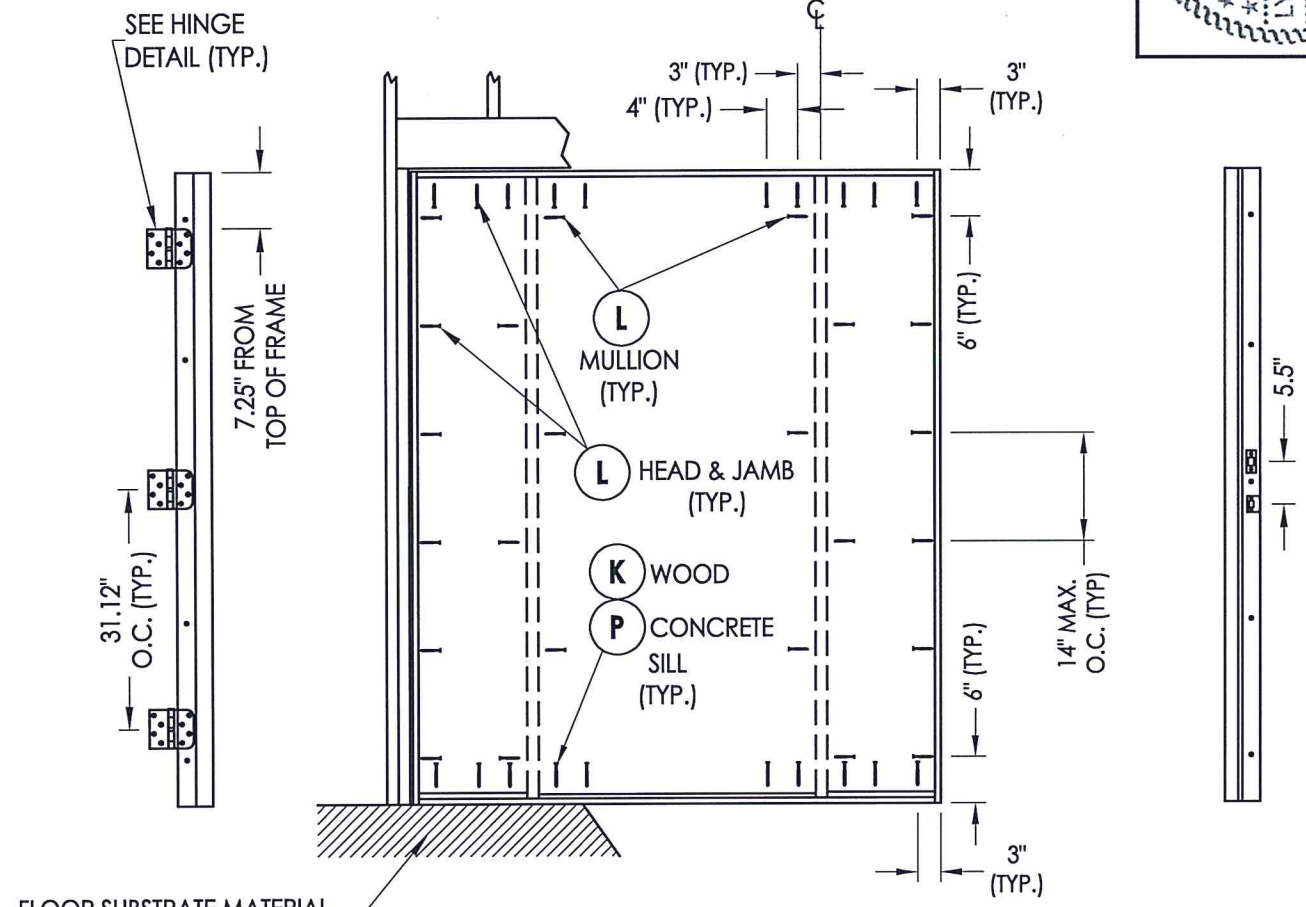
**HINGE JAMB**

**FRAME ANCHORING  
OX**

**STRIKE MULLION**



**LATCH AND DEADBOLT  
Details**

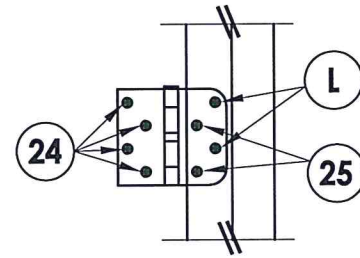


FLOOR SUBSTRATE MATERIAL  
CONCRETE (MIN. 3000 PSI)  
WOOD (S.G. >= 0.42)

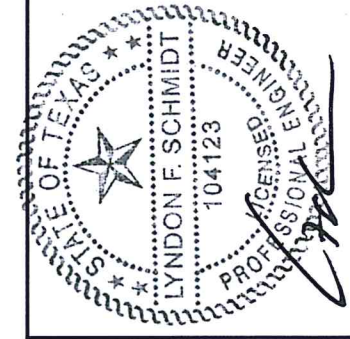
**HINGE MULLION**

**FRAME ANCHORING  
OXO**

**STRIKE MULLION**



**HINGE DETAIL**



Documents Prepared By: Lyndon F. Schmidt, P.E.  
TEXAS P.E. #104123

**RW** BUILDING CONSULTANTS, INC.  
P.O. Box 230 Valrico FL, 33595  
Phone No.: 813.659.9197

TEXAS BOARD OF PROFESSIONAL ENGINEERS  
CERTIFICATE OF REGISTRATION # F-11852

PRODUCT:		PLASTIPRO FIBERGLASS DOOR	
PART OR ASSEMBLY:		FRAME ANCHORING	
NO.	DATE	BY	REVISIONS
2	8/19/20	LFS	REVISE COMPONENTS SHEET
1	5/27/20	LFS	UPDATE TO 2018 IBC/IRC CODE

DATE: 1/17/11  
SCALE: N.T.S.  
DWG. BY: JK  
CHK. BY: LFS  
DRAWING NO.: TX-4120  
SHEET 8 OF 9



Z:\Clients\Plastpro, Inc PERMANENT\B - TD\VTDI - DR 488\Drawings\TX-4120.dwg

**BILL OF MATERIALS**

ITEM #	DESCRIPTION	MATERIAL
A	2X HEADER FRAMING (SG >= 0.42)	WOOD
B	2X BUCK (SG >= 0.42)	WOOD
C	1/4" MAX. SHIM SPACE	-
J	#9 X 2-1/2" DRYWALL SCREW	STEEL
L	#10 X 2-1/2" PFH WOOD SCREW (1.15" MIN. EMBEDMENT)	STEEL
K	#10 X 3" PFH WOOD SCREW	STEEL
P	1/4" PFH DeWALT OR ITW CONCRETE SCREW (1-3/4" MIN. EMB.)	STEEL
1	POLY FIBER JAMB	COMP.
2	WOOD JAMB (FINGER JOINTED PINE)	WOOD
3	1X MULLION REINFORCEMENT (SG >= 0.55)	WOOD
4	#8 X 1-1/2" PPH SMS	STEEL
5	INT. FRAME	PVC
6	EXT. FRAME	PVC
7	FORCE 5 WEATHER STRIPPING BY ENDURA	FOAM
8	SWEEP	PVC
9	ALUMINUM SPACER	ALUMINUM
10	INSWING THRESHOLD	ALUM/COMP
11	INSWING THRESHOLD W/SIDELITE ADAPTER	ALUM/COMP
12	HOMERUN SEALANT	-
13	READISEAL SEALANT	-
18	OUTSWING THRESHOLD	ALUM/COMP
19	OUTSWING THRESHOLD W/SIDELITE ADAPTER	ALUM/COMP
24	#9 X 3/4" PFH WOOD SCREW	STEEL
26	#8 X 1-1/2" PFH WOOD SCREW	STEEL
27	LATCH STRIKE PLATE	STEEL
28	DEADBOLT STRIKE PLATE	STEEL
29	4" X 4" HINGE	STEEL
40	DOOR PANEL	-
50	SIDELITE PANEL	-

**CONCRETE ANCHOR NOTES:**

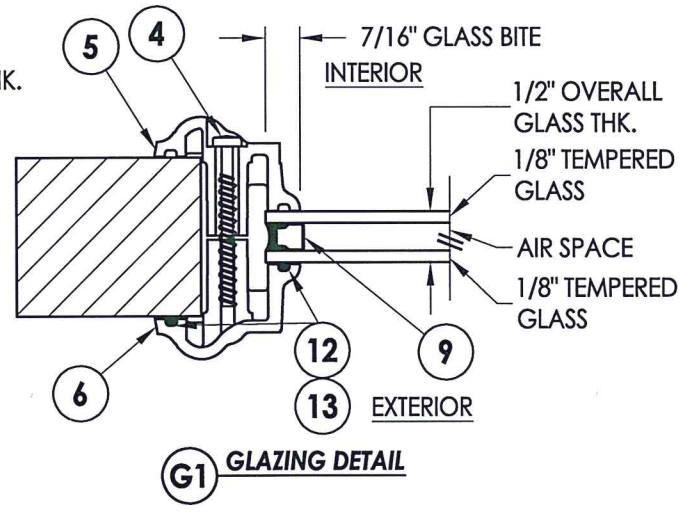
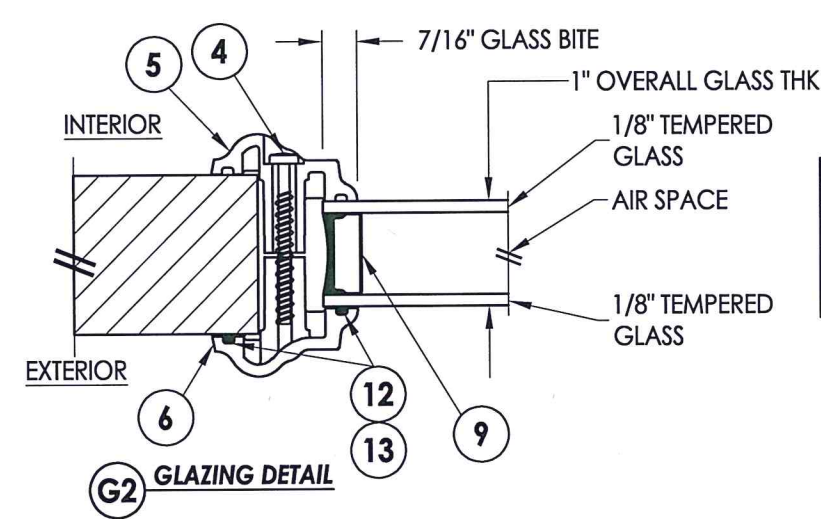
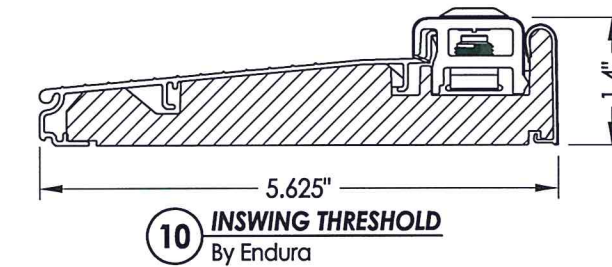
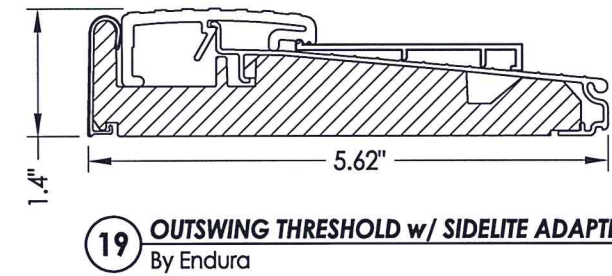
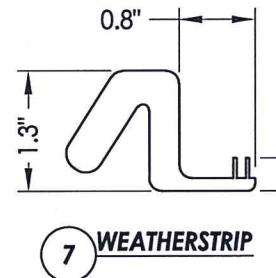
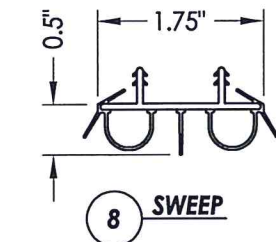
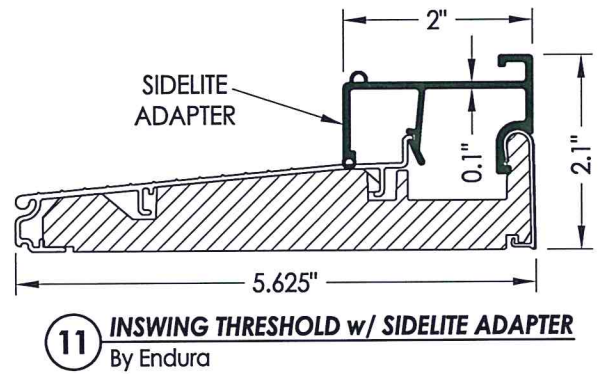
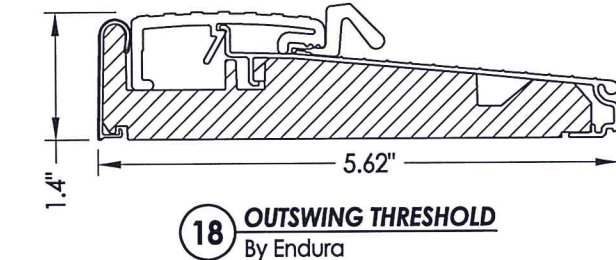
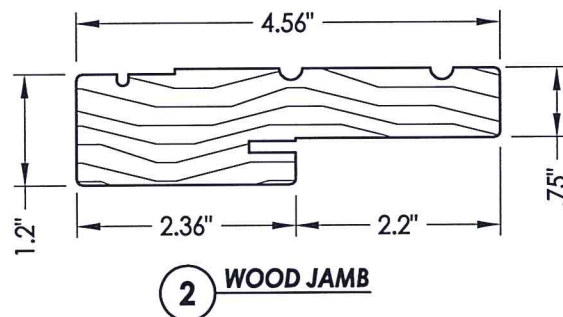
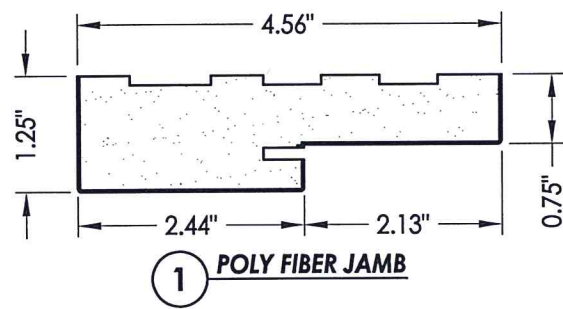
- Concrete anchor locations at the corners may be adjusted to maintain the min. edge distance to mortar joints.
- Concrete anchor locations noted as "MAX. ON CENTER" must be adjusted to maintain the min. edge distance to mortar joints, additional concrete anchors may be required to ensure the "MAX. ON CENTER" dimension are not exceeded.
- Concrete anchor table:

ANCHOR TYPE	ANCHOR SIZE	MIN. EMBEDMENT	MIN. CLEARANCE TO MASONRY EDGE	MIN. CLEARANCE TO ADJACENT ANCHOR
ITW BUILDEX TAPCON®	1/4"	1-3/4"	2"	4"
DeWALT ULTRACON®	1/4"	1-3/4"	1"	4"

- Concrete: 3,000 psi min. conforming to ACI 301.

**WOOD SCREW INSTALLATION NOTES:**

- Maintain a minimum 5/8" edge distance, 1" end distance, & 1" o.c. spacing of wood screws to prevent the splitting of wood.



Documents Prepared By: Lyndon F. Schmidt, P.E.  
TEXAS P.E. #104123

**RW** BUILDING CONSULTANTS, INC.  
P.O. Box 230 Valrico FL, 33595  
Phone No.: 813.659.9197

TEXAS BOARD OF PROFESSIONAL ENGINEERS  
CERTIFICATE OF REGISTRATION # F-11852

PRODUCT: PLASTPRO FIBERGLASS DOOR

PART OR ASSEMBLY: BILL OF MATERIALS, COMPONENTS & GLAZING DETAILS

NO.	DATE	BY	REVISIONS
2	8/19/20	LFS	REVISE COMPONENTS SHEET
1	5/27/20	LFS	UPDATE TO 2018 IBC/IRC CODE

DATE: 1/17/11

SCALE: N.T.S.

DWG. BY: JK

CHK. BY: LFS

DRAWING NO.: TX-4120

SHEET 9 OF 9