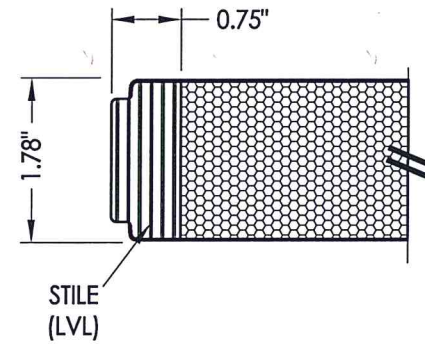
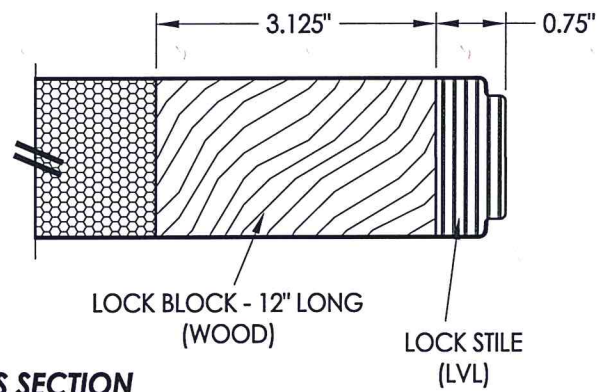


1  
2 **HORIZONTAL CROSS SECTION**



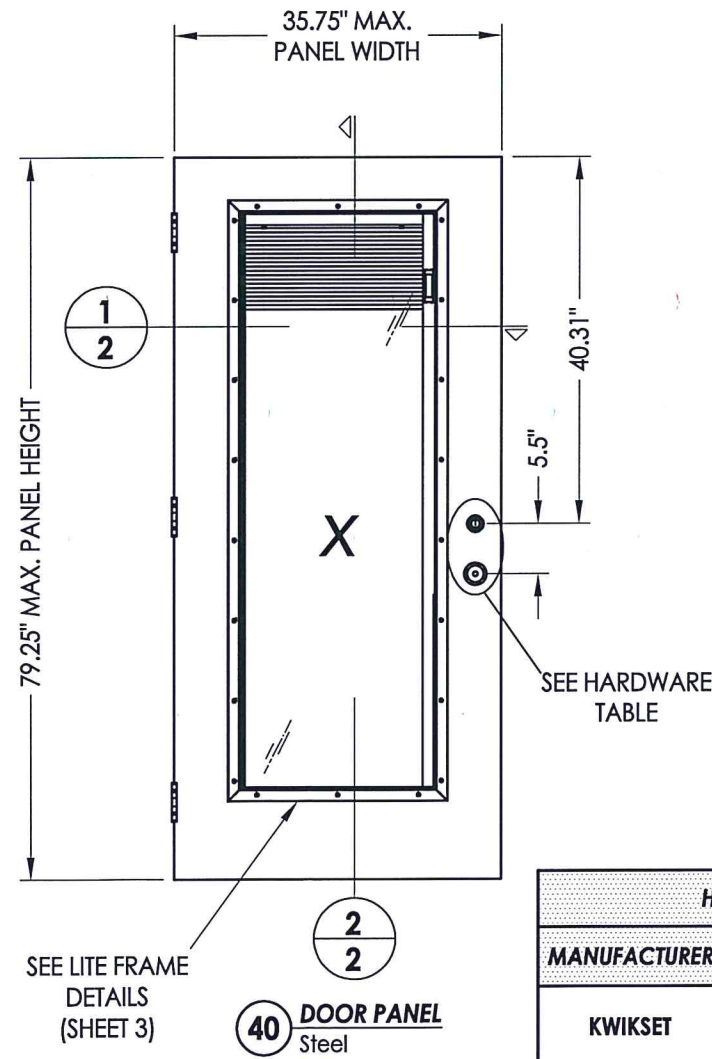
3  
2 **HORIZONTAL CROSS SECTION**



Documents Prepared By: Lyndon F. Schmidt, P.E.  
TEXAS P.E. #104123

**RW** BUILDING CONSULTANTS, INC.  
P.O. Box 230 Vairico FL 33595  
Phone No.: 813.659.9197

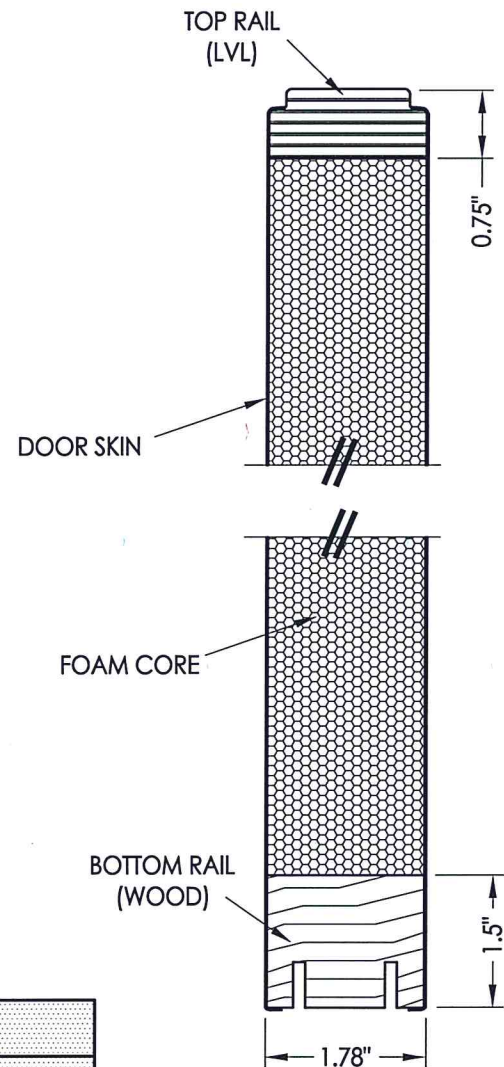
CERTIFICATE OF REGISTRATION # F-11852



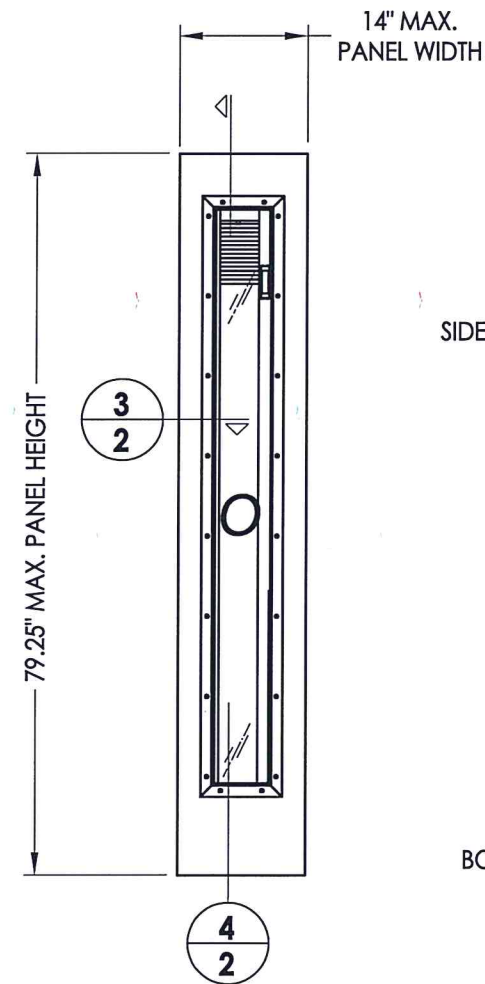
40 **DOOR PANEL**  
Steel

HARDWARE TABLE	
MANUFACTURER	MODEL
KWIKSET	KNOB: KWIKSET (GR. 2) DEADBOLT: 660 SERIES (GR. 3)
SCHLAGE	KNOB: F SERIES (GR. 2) DEADBOLT: B60 SERIES (GR. 1)

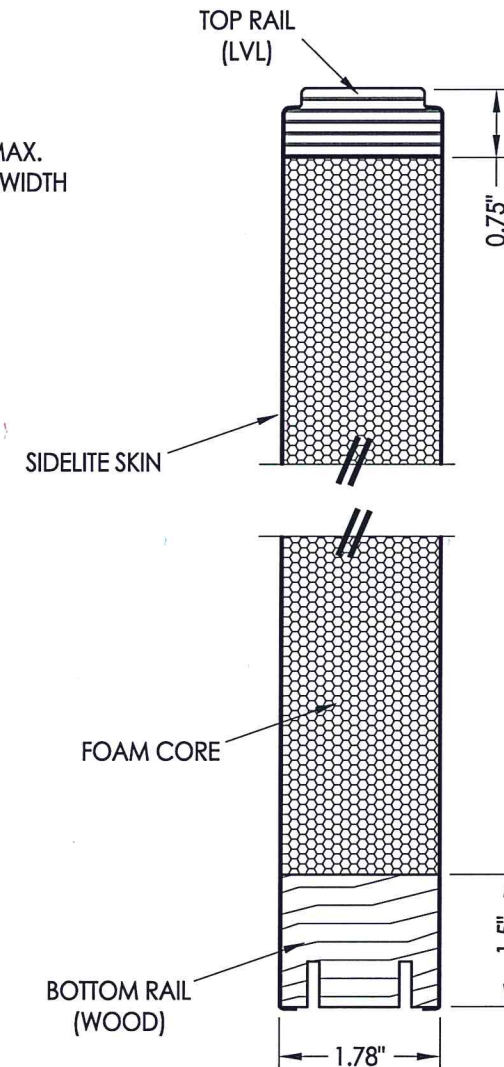
DOOR/SIDELITE SKIN: 0.022" MIN. THK. STEEL  
CORE MATERIAL: POLYSTYRENE FOAM



2  
2 **VERTICAL CROSS SECTION**



50 **SIDELITE PANEL**  
Steel



4  
2 **VERTICAL CROSS SECTION**

PRODUCT: STEVES & SONS

PART OR ASSEMBLY:  
DOOR & SIDELITE  
PANEL DETAILS

NO.	DATE	DESCRIPTION	BY
1	6/02/20	UPDATE TO 2018 IBC/IRC CODE	LFS

DATE: 5/09/18

SCALE: N.T.S.

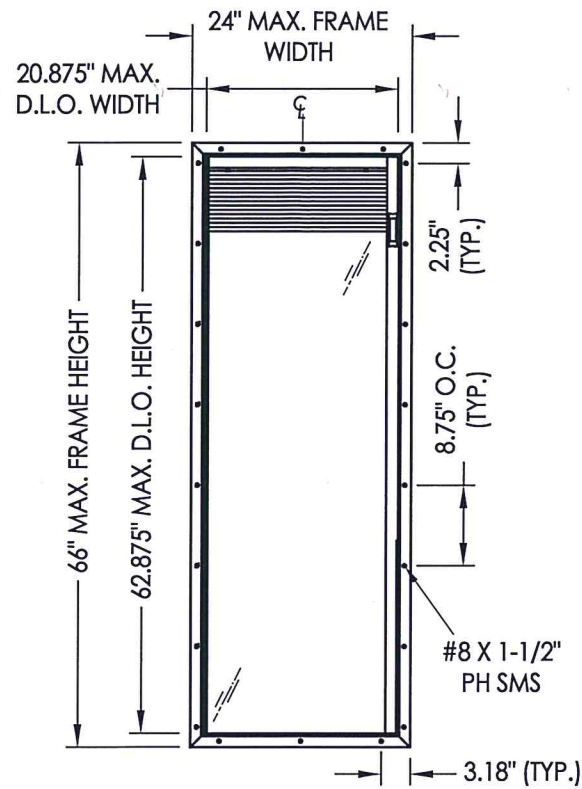
DWG. BY: JK

CHK. BY: LFS

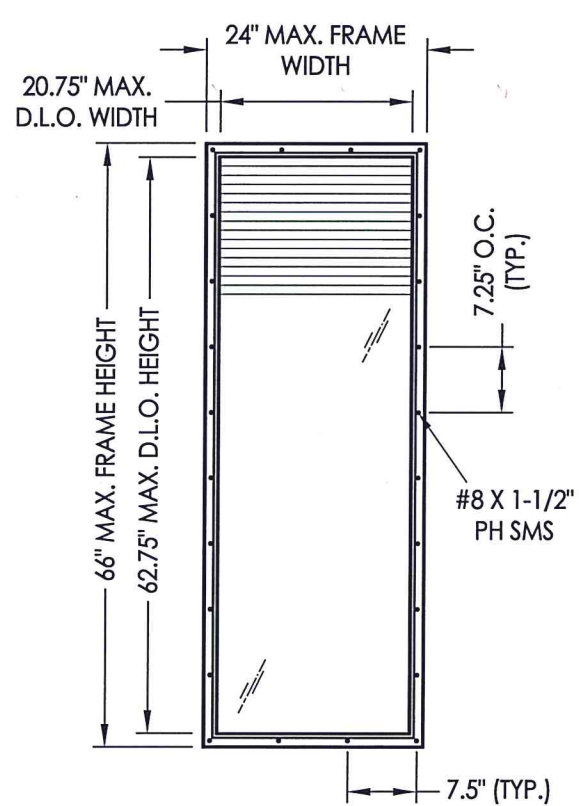
DRAWING NO.: TX-4832

SHEET 2 OF 8

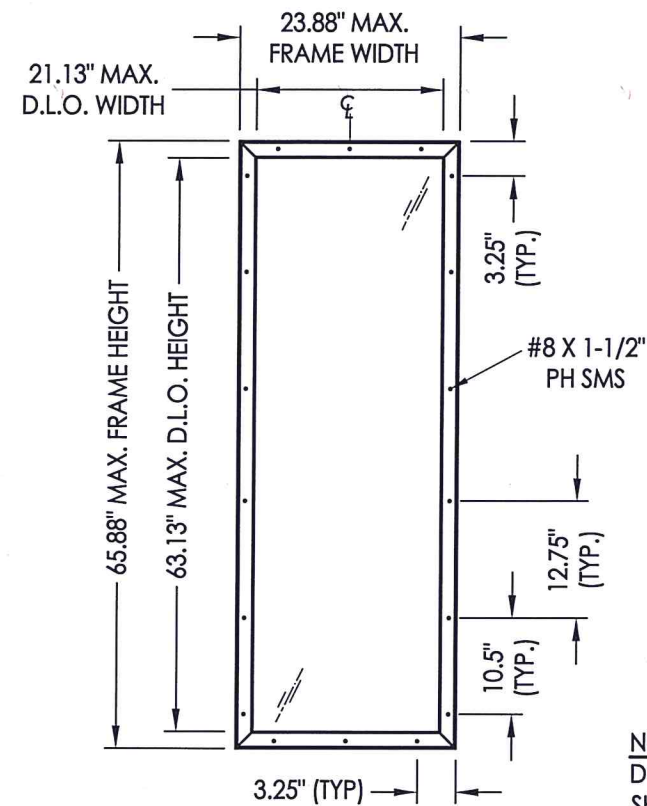




**EVOLVE LITE FRAME (ODL)**  
(w/ BLINDS BETWEEN GLASS)

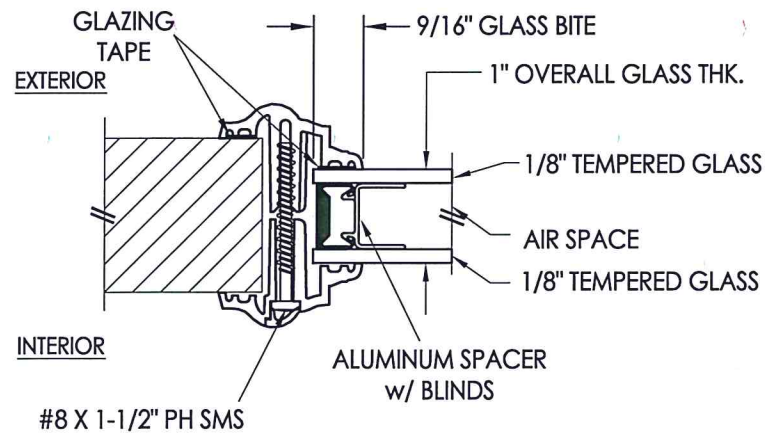


**TRIMLITE FRAME**  
(w/ BLINDS BETWEEN GLASS)

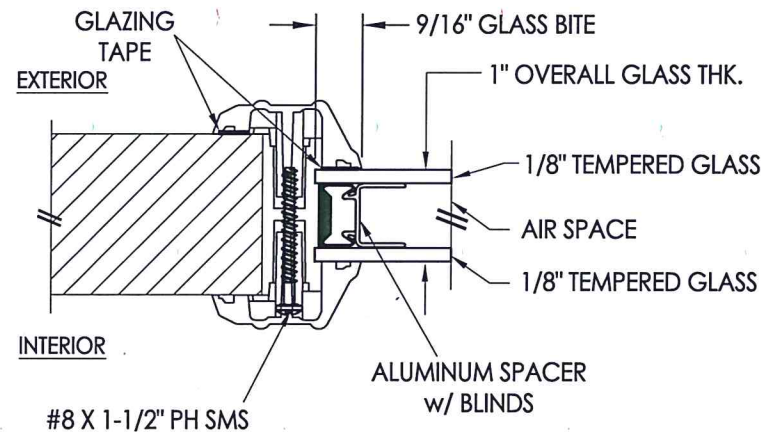


**ODL LITE FRAME**

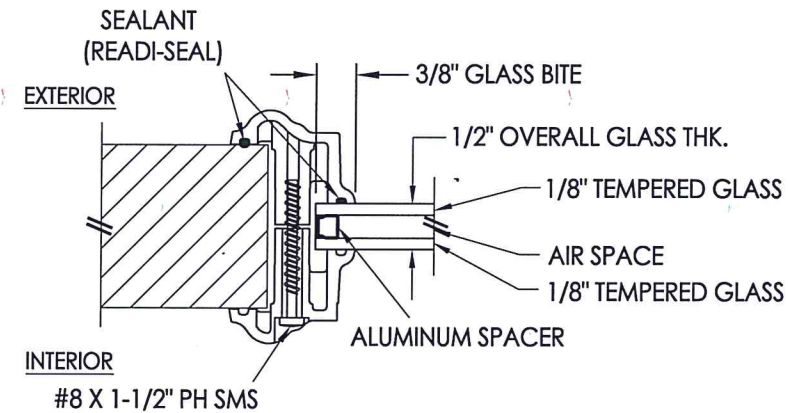
**NOTE:**  
DOOR PANEL LITE FRAMES (36" NOMINAL) ARE SHOWN. SIDELITE LITE FRAMES (14" NOMINAL) ARE SIMILAR w/ ONLY TWO (2) INSTALLATION SCREWS @ TOP & BOTTOM.



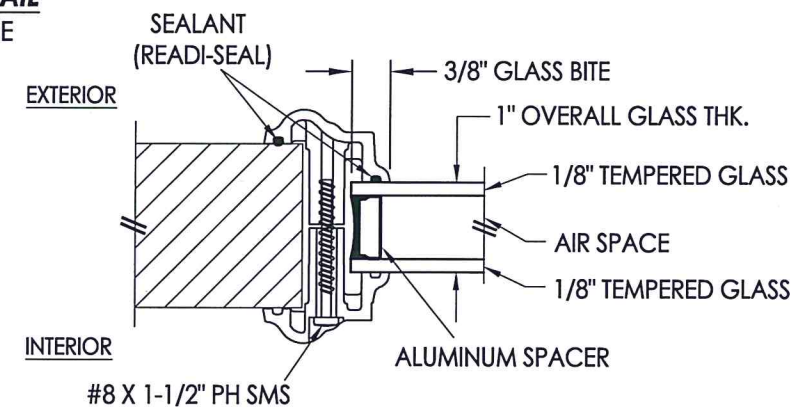
**G1 GLAZING DETAIL**  
EVOLVE LITE FRAME



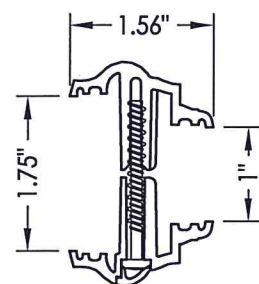
**G2 GLAZING DETAIL**  
TRIMLITE FRAME



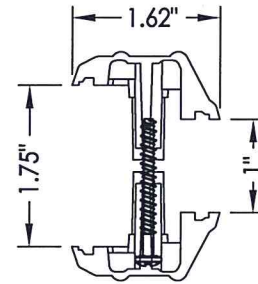
**G3 GLAZING DETAIL**  
ODL LITE FRAME



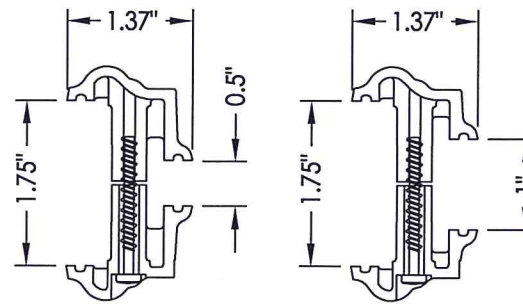
**G4 GLAZING DETAIL**  
ODL LITE FRAME



**EVOLVE LITE FRAME (1\"/>**



**TRIMLITE FRAME (1\"/>**



**ODL LITE FRAME (1/2\"/>**



Documents Prepared By: Lyndon F. Schmidt, P.E.  
TEXAS P.E. #104123

**RW** BUILDING CONSULTANTS, INC.  
P.O. Box 230 Valrico FL 33595  
Phone No.: 813.659.9197

CERTIFICATE OF REGISTRATION # F-11852

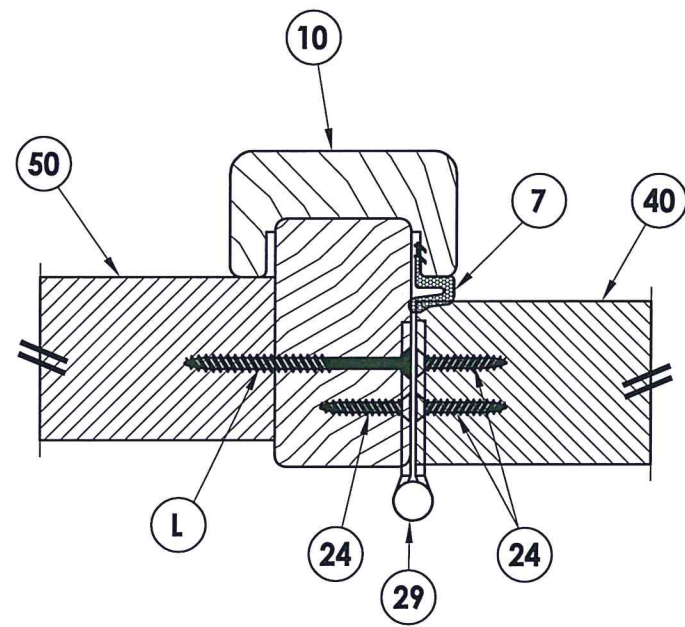
PRODUCT:	STEVES & SONS
PART OR ASSEMBLY:	LITE FRAME DETAILS

NO.	DATE	DESCRIPTION	BY
1	6/02/20	UPDATE TO 2018 IBC/IRC CODE	LFS

DATE:	5/09/18
SCALE:	N.T.S.
DWG. BY:	JK
CHK. BY:	LFS
DRAWING NO.:	TX-4832
SHEET	3 OF 8

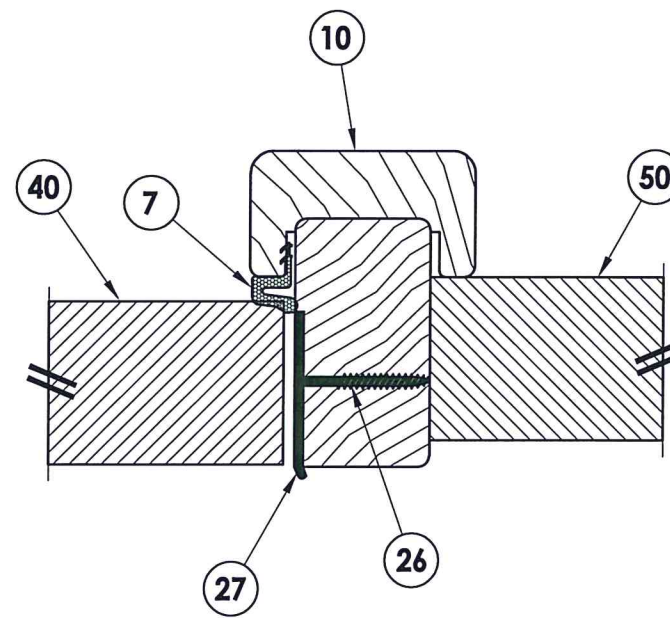






**4** HORIZONTAL CROSS SECTION  
**5** Inswing shown (Outswing similar)

EXTERIOR



**5** HORIZONTAL CROSS SECTION  
**5** Inswing shown (Outswing similar)

INTERIOR

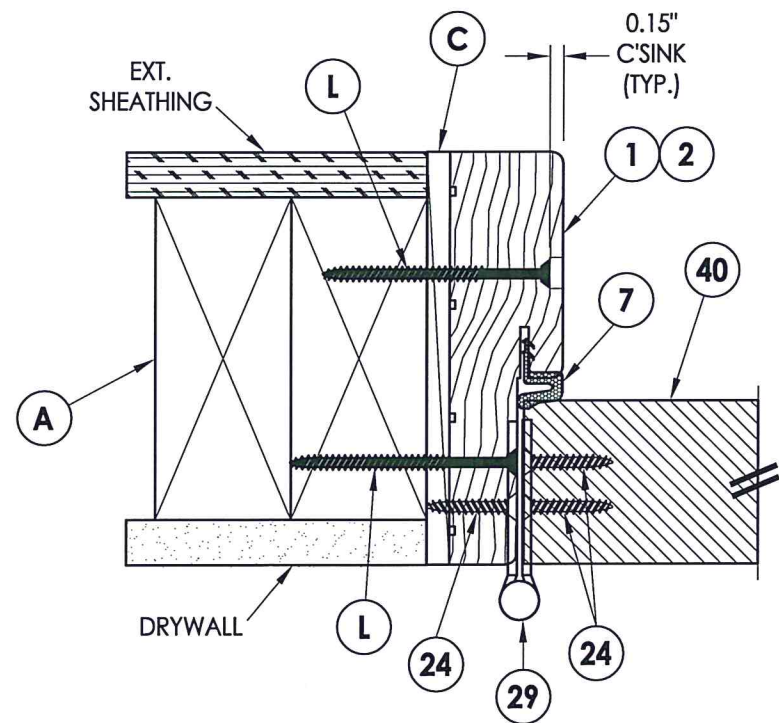


NOTE:  
 1. Item #63 located 6" from each end plus 3 more equally spaced (5 total).

Documents Prepared By: Lyndon F. Schmidt, P.E.  
 TEXAS P.E. #104123

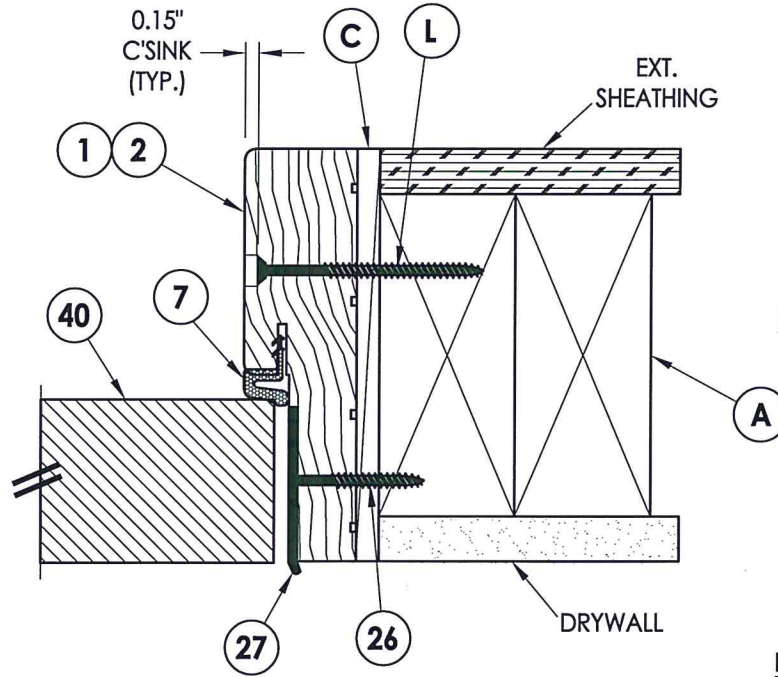
**RW** BUILDING CONSULTANTS, INC.  
 P.O. Box 230 Valrico FL 33595  
 Phone No.: 813.659.9197

CERTIFICATE OF REGISTRATION # F-11852



**1** HORIZONTAL CROSS SECTION  
**5** Inswing shown (Outswing similar)

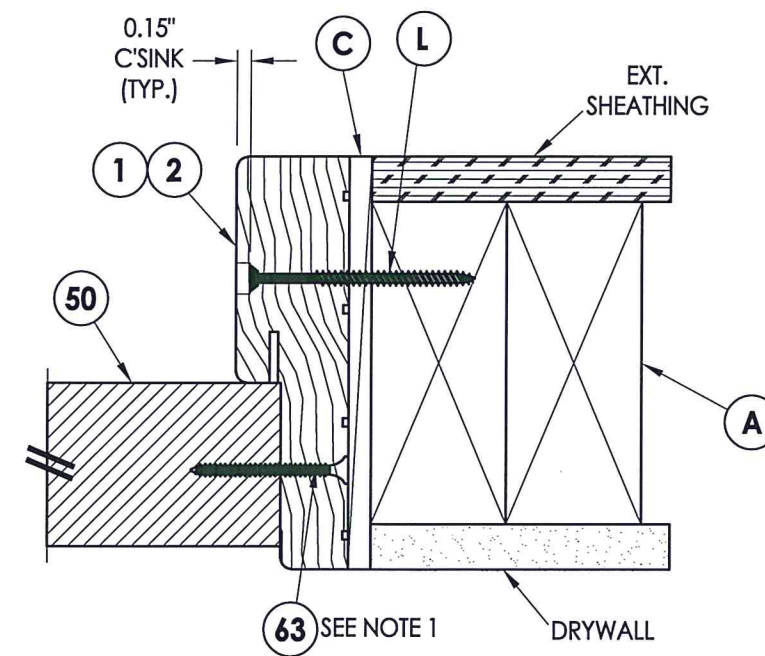
EXTERIOR



**2** HORIZONTAL CROSS SECTION  
**5** Inswing shown (Outswing similar)

EXTERIOR

INTERIOR



**3** HORIZONTAL CROSS SECTION  
**5** Inswing shown (Outswing similar)

PRODUCT: STEVES & SONS

PART OR ASSEMBLY:  
 HORIZONTAL  
 CROSS SECTIONS

NO.	DATE	REVISIONS	BY
1	6/02/20	UPDATE TO 2018 IBC/IRC CODE	LFS

DATE: 5/09/18

SCALE: N.T.S.

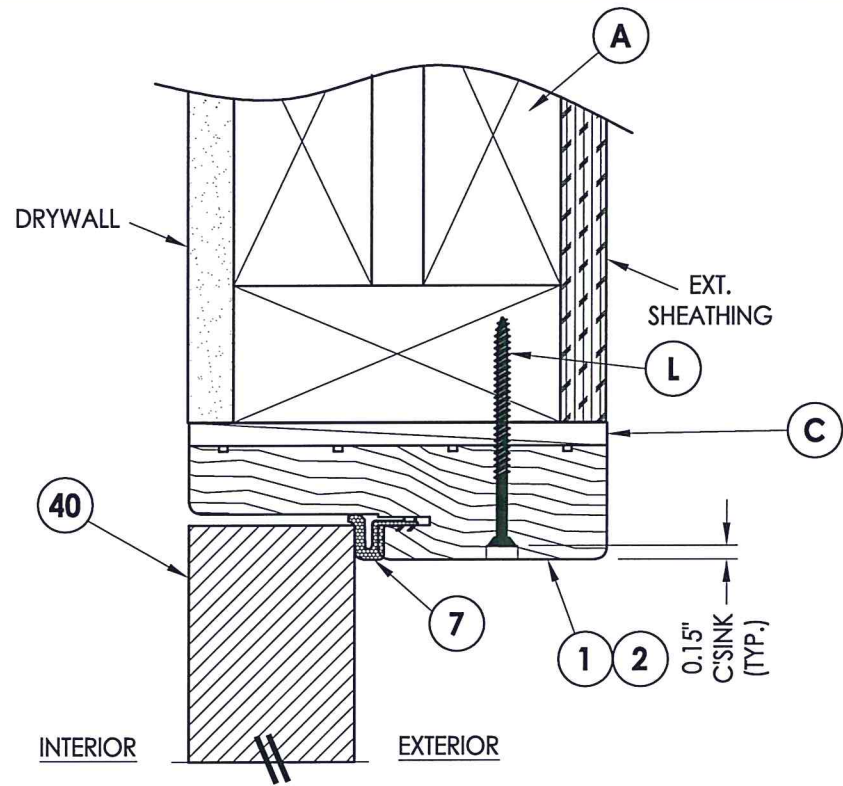
DWG. BY: JK

CHK. BY: LFS

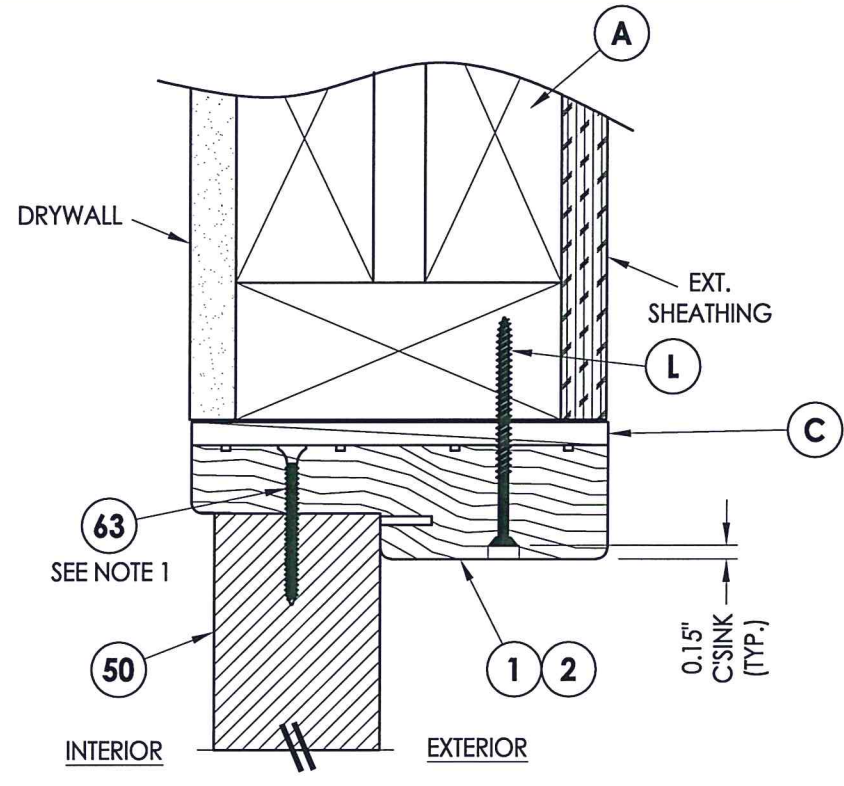
DRAWING NO.: TX-4832

SHEET 5 OF 8





**1** VERTICAL CROSS SECTION  
**6** Inswing shown (Outswing similar)



**2** VERTICAL CROSS SECTION  
**6** Inswing shown (Outswing similar)

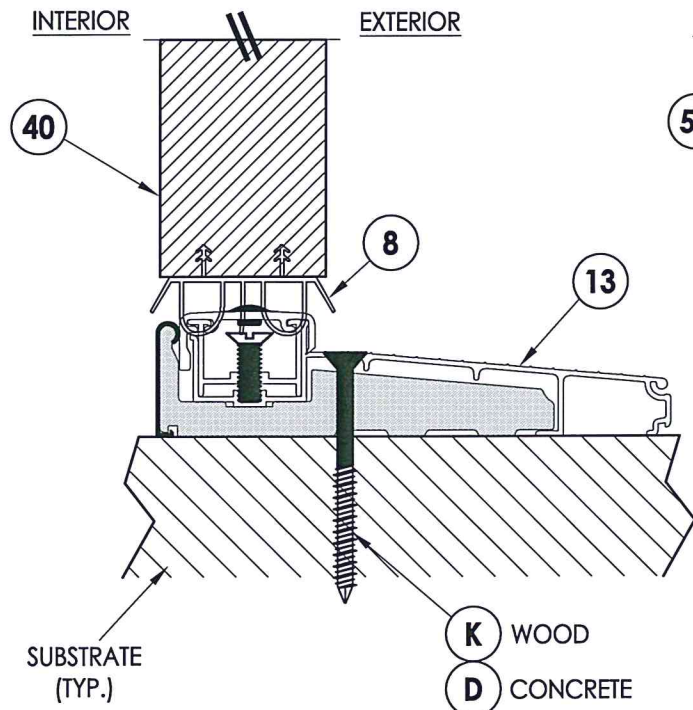
NOTE:  
1. Item #63 located 3" from each end (2 total).



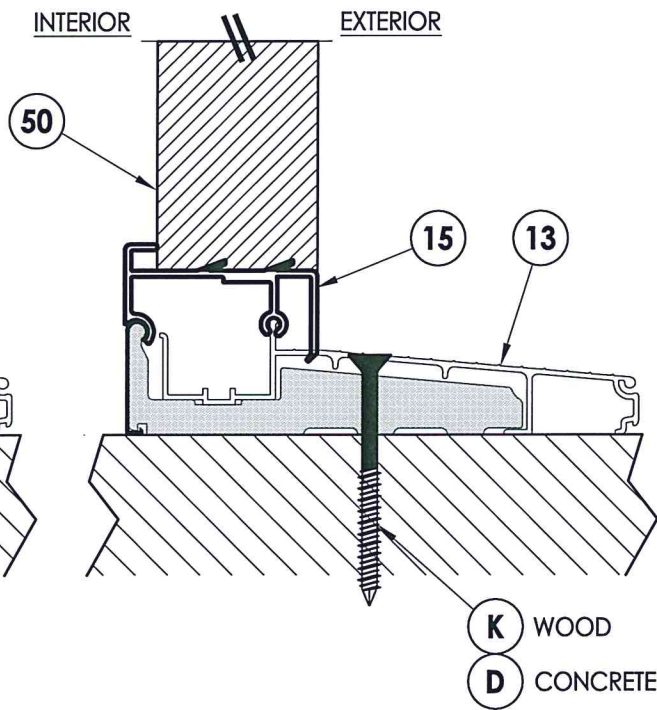
Documents Prepared By: Lyndon F. Schmidt, P.E.  
TEXAS P.E. #104123

RW BUILDING CONSULTANTS, INC.  
P.O. Box 230 Valrico FL, 33595  
Phone No.: 813.659.9197

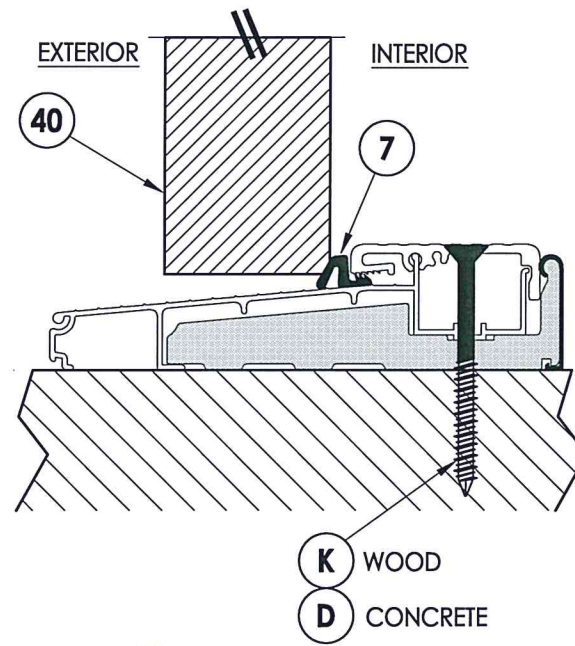
CERTIFICATE OF REGISTRATION # F-11852



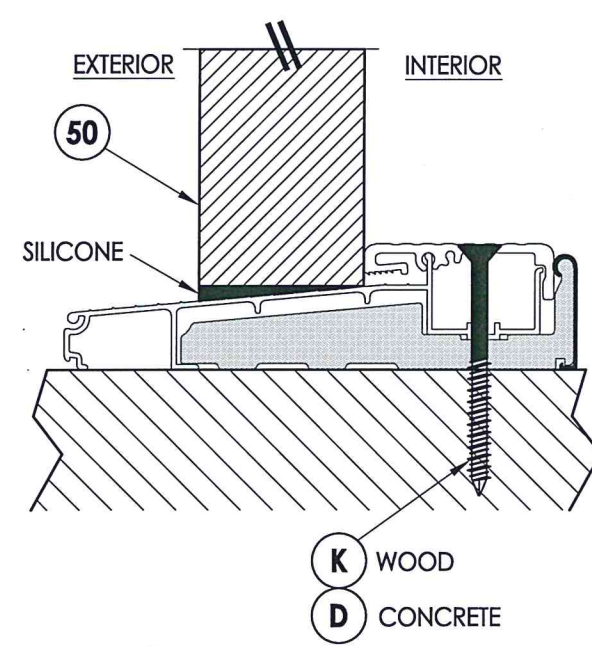
**3** VERTICAL CROSS SECTION  
**6** Inswing sill



**4** VERTICAL CROSS SECTION  
**6** Inswing sill



**5** VERTICAL CROSS SECTION  
**6** Outswing Sill



**6** VERTICAL CROSS SECTION  
**6** Outswing Sill

PRODUCT: STEVES & SONS

PART OR ASSEMBLY:  
VERTICAL CROSS SECTIONS

NO.	DATE	UPDATE TO 2018 IBC/IRC CODE	LFS	BY
1	6/02/20	UPDATE TO 2018 IBC/IRC CODE	LFS	BY

DATE: 5/09/18

SCALE: N.T.S.

DWG. BY: JK

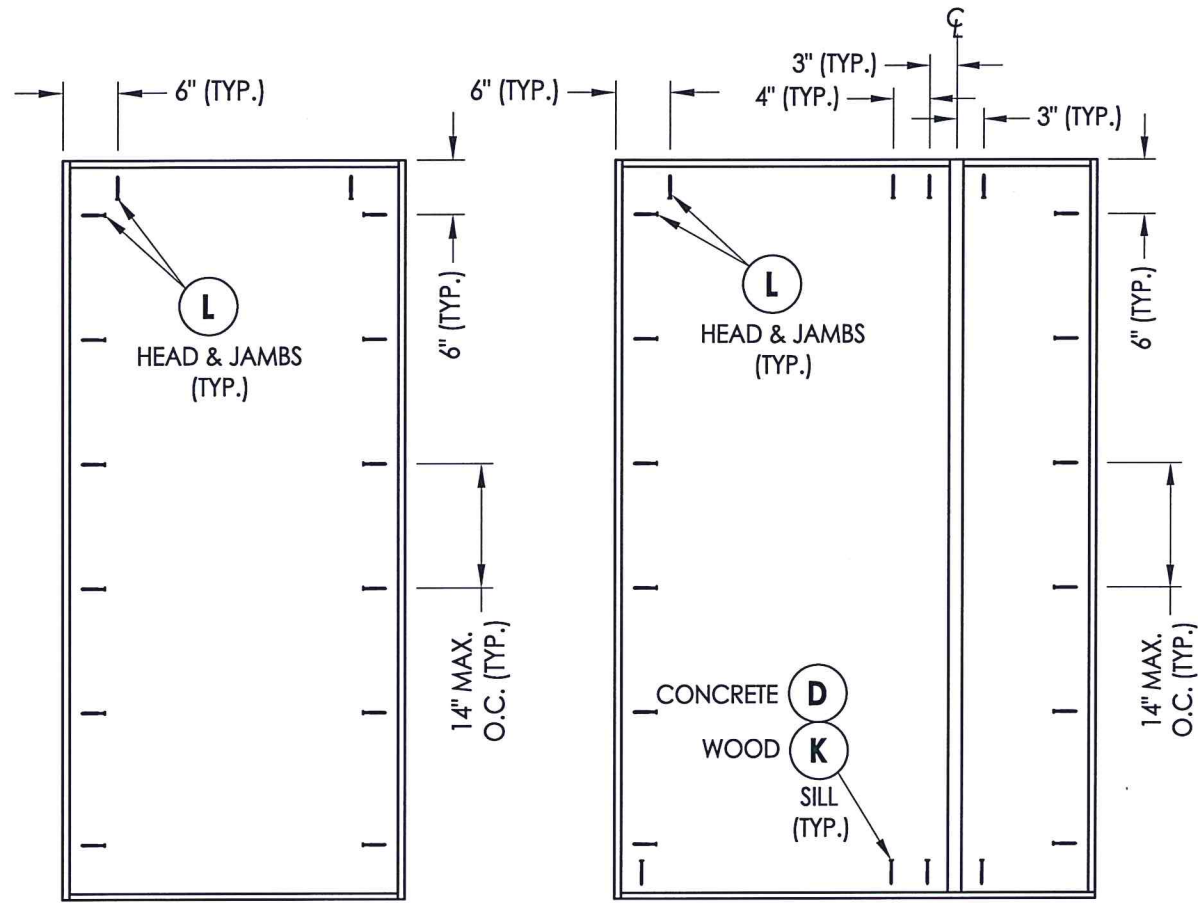
CHK. BY: LFS

DRAWING NO.:

TX-4832

SHEET 6 OF 8

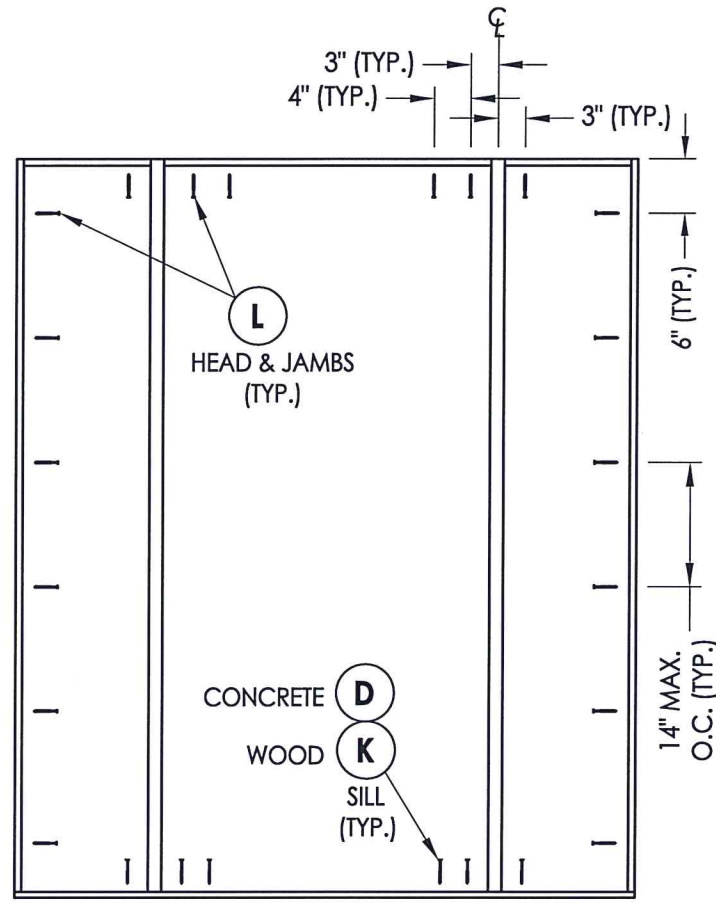




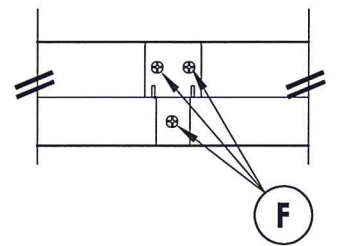
X

XO/OX

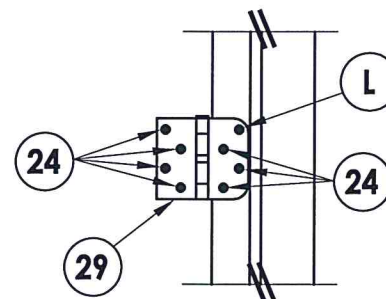
**FRAME ANCHORING**



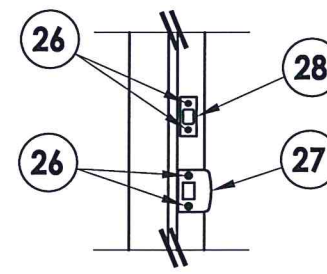
OXO



**MULLION CONNECTION DETAIL**

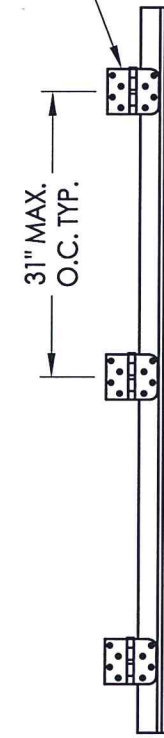


**HINGE DETAIL**



**STRIKE PLATE DETAIL**

SEE HINGE DETAIL (TYP.)

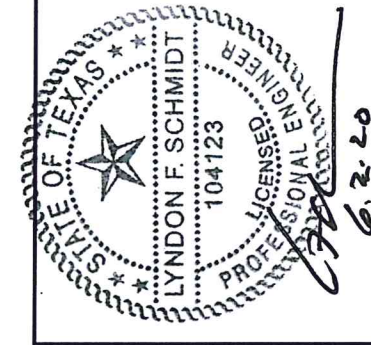


**HINGE JAMB**



**STRIKE JAMB/MULLION**

SEE STRIKE PLATE DETAIL



Documents Prepared By: Lyndon F. Schmidt, P.E.  
TEXAS P.E. #104123

**RW** BUILDING CONSULTANTS, INC.  
P.O. Box 230 Valrico FL 33595  
Phone No.: 813.659.9197

CERTIFICATE OF REGISTRATION # F-11852

PRODUCT: STEVES & SONS

PART OR ASSEMBLY: FRAME ANCHORING

NO.	DATE	DESCRIPTION	LFS	BY
1	6/02/20	UPDATE TO 2018 IBC/IRC CODE	LFS	BY

DATE: 5/09/18

SCALE: N.T.S.

DWG. BY: JK

CHK. BY: LFS

DRAWING NO.: TX-4832

SHEET 7 OF 8



**BILL OF MATERIALS**

ITEM #	DESCRIPTION	MATERIAL
A	2X FRAMING (SG >= 0.42)	WOOD
C	1/4" MAX. SHIM SPACE	-
D	1/4" Ø PFH ELCO OR ITW CONCRETE SCREW (1-3/4" MIN. EMBEDMENT)	STEEL
F	#8 X 2-1/2" PFH WS	STEEL
K	#10 PFH WS (1-3/4" MIN. EMBEDMENT)	STEEL
L	#10 X 2-1/2" PFH WS (1.15" MIN. EMBEDMENT)	STEEL
1	WOOD JAMB (FINGER-JOINT PINE - SG >= 0.42)	WOOD
2	COMPOSITE JAMB (WORLDWIDE 4EVER JAMB)	COMP
7	WEATHERSTRIP (Q-LON)	FOAM
8	DOOR BOTTOM SWEEP	PVC
10	INTEGRAL MULLION (PINE - SG >= 0.42)	WOOD
13	INSWING ADJUSTABLE THRESHOLD	ALUM/ COMP
14	OUTSWING BUMP THRESHOLD	ALUM/ COMP
15	INSWING SIDELITE SPACER	PVC
24	#10 X 1" PFH WS	STEEL
26	#8 X 1-1/2" PFH WS	STEEL
27	LATCH STRIKE PLATE	STEEL
28	DEADBOLT STRIKE PLATE	STEEL
29	4" X 4" HINGE	STEEL
40	DOOR PANEL	STEEL
50	SIDELITE PANEL	STEEL
63	#6 X 1-5/8" DR WALL SCREW	STEEL

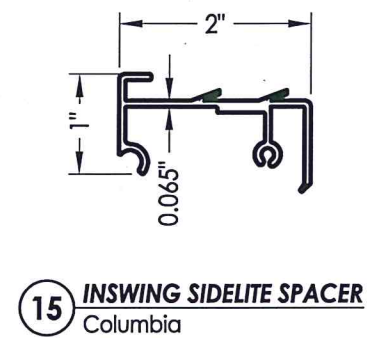
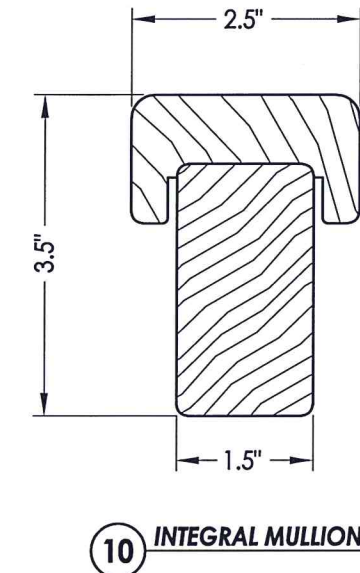
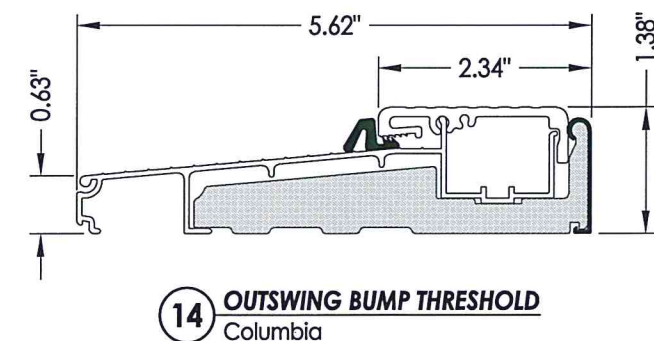
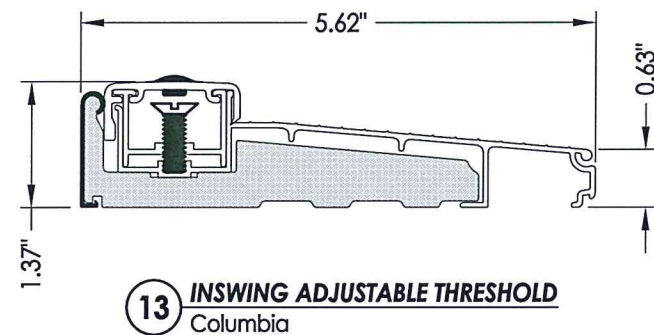
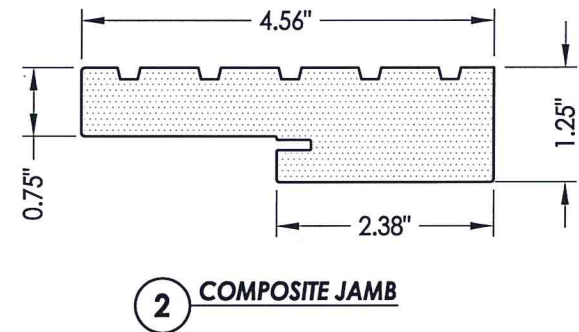
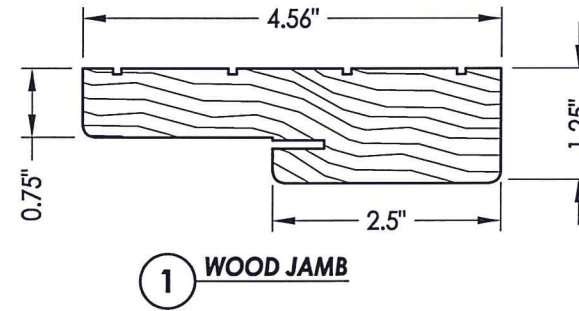
**CONCRETE ANCHOR NOTES:**

- Concrete anchor locations at the corners may be adjusted to maintain the min. edge distance to mortar joints.
- Concrete anchor locations noted as "MAX. ON CENTER" must be adjusted to maintain the min. edge distance to mortar joints, additional concrete anchors may be required to ensure the "MAX. ON CENTER" dimension are not exceeded.
- Concrete anchor table:

ANCHOR TYPE	ANCHOR SIZE	MIN. EMBEDMENT	MIN. CLEARANCE TO MASONRY EDGE	MIN. CLEARANCE TO ADJACENT ANCHOR
ITW TAPCON®	1/4"	1-3/4"	2"	4"
ELCO ULTRACON®	1/4"	1-3/4"	1"	4"

**WOOD SCREW INSTALLATION NOTES:**

- Maintain a minimum 5/8" edge distance, 1" end distance, & 1" o.c. spacing of wood screws to prevent the splitting of wood.



Documents Prepared By: Lyndon F. Schmidt, P.E.  
TEXAS P.E. #104123

**RW** BUILDING CONSULTANTS, INC.  
P.O. Box 230 Valrico FL, 33595  
Phone No.: 813.659.9197

CERTIFICATE OF REGISTRATION # F-11852

PRODUCT: STEVES & SONS

PART OR ASSEMBLY: BILL OF MATERIALS & COMPONENTS

NO.	DATE	DESCRIPTION	BY
1	6/02/20	UPDATE TO 2018 IBC/IRC CODE	LFS

DATE: 5/09/18

SCALE: N.T.S.

DWG. BY: JK

CHK. BY: LFS

DRAWING NO.: TX-4832

SHEET 8 OF 8