

THERMA TRU®

118 INDUSTRIAL DR., EDGERTON, OH 43517
TEL. (419)298-1740

"SMOOTH STAR", "FIBER CLASSIC", "CLASSIC CRAFT" & "CLASSIC CRAFT RUSTIC" GLAZED FIBERGLASS DOOR IN SWING / OUT SWING "IMPACT"

EVALUATED FOR USE IN THE STATE OF TEXAS

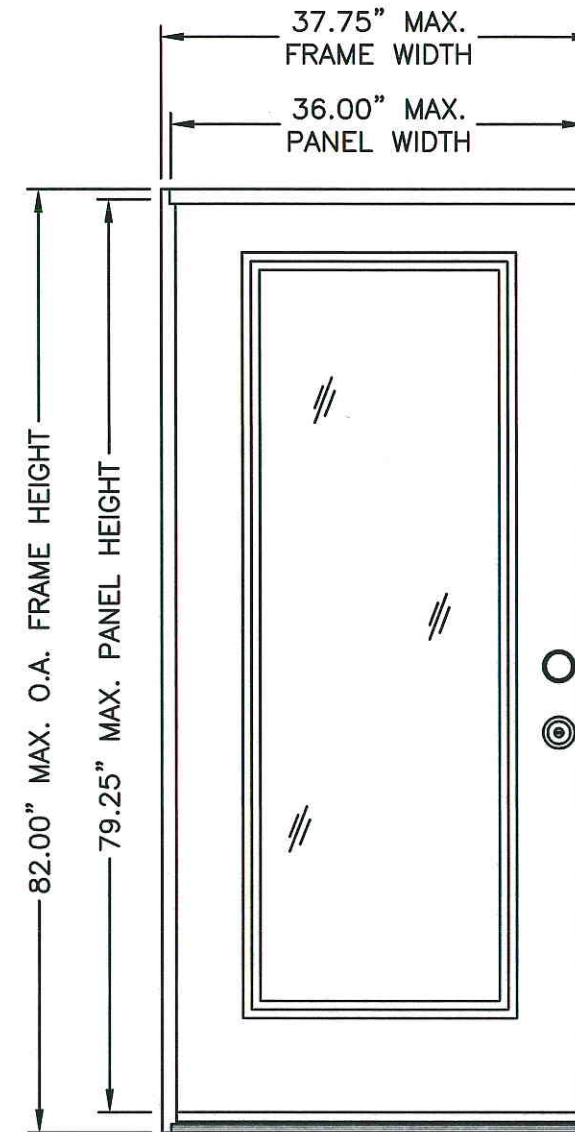
THE THERMA-TRU FIBERGLASS DOOR DESCRIBED HEREIN COMPLIES WITH THE INTERNATIONAL RESIDENTIAL CODE (IRC), SECTIONS R301 & R613 AND THE INTERNATIONAL BUILDING CODE (IBC), SECTIONS 1714.5 1405.12, 1609, 2403 AND 2404 (INCLUDING TEXAS REVISIONS) SUBJECT TO THE FOLLOWING CONDITIONS:

1. Anchors shall be as listed and spaced as shown in the details. Anchor embedment to base material shall be beyond wall dressing or stucco.
2. When used in wind borne debris regions (SEAWARD and INLAND I ZONES), the Product complies with Sections R301.2.1.2 and 1609.1.4 as an impact resistant product and does not require the use of an approved impact resistant covering. This product does not meet the requirements for enhanced protection of essential facilities as defined in ASTM E1996.
3. Allowable design pressure requirements must be equal to or less than the design pressure rating shown in the design pressure chart, sheet 1 of this drawing.
4. Conditions not covered by this drawing are subject to further engineering analysis.

SUPPORTING DOCUMENTS & EVIDENCE

1. Testing per AAMA 101/I.S.2/A440-05, ASTM E1886-02 and ASTM E1996-02 as performed by Testing Evaluation Laboratories Inc. and report number TEL 06-0718-1, dated July 17, 2006 and signed by Wendell W. Haney, P.E.
2. Anchor analysis for loading conditions prepared, signed and sealed by Wendell W. Haney, P.E. Glass load resistance report ASTM E1300-00, prepared by Wendell W. Haney, P.E..
3. Certificate of Participation issued by the National Accreditation and Management Institute, Inc., certifying that Therma Tru Corporation is manufacturing products within a Quality Assurance program.

TABLE OF CONTENTS	
SHEET #	DESCRIPTION
1	TYPICAL ELEVATION, DESIGN PRESSURES & GENERAL NOTES
2	DOOR PANEL CROSS SECTIONS "SMOOTH STAR"
3	DOOR PANEL CROSS SECTIONS "CLASSIC CRAFT" & "RUSTIC"
4	DOOR PANEL CROSS SECTIONS "FIBER CLASSIC"
5	HORIZONTAL CROSS SECTIONS
6	VERTICAL CROSS SECTIONS
7	FRAME ANCHORING
8	BILL OF MATERIALS & COMPONENTS



X

"SMOOTH STAR", "FIBER CLASSIC"
"CLASSIC CRAFT" & "CLASSIC CRAFT RUSTIC"

SWING	OVERALL FRAME DIMENSION	OVERALL D.L.O. DIMENSION	DESIGN PRESSURE (PSF)	
			POSITIVE	NEGATIVE
IN SWING	37.75" X 82.00"	21.00" X 63.25"	+47.0	-53.0
OUT SWING	37.75" X 80.62"	21.00" X 63.25"	+50.0	-50.0

Documents Prepared By:

RW BUILDING CONSULTANTS, INC.
P.O. Box 230 Valrico FL 33595
Phone No.: 813.659.9197
Florida Board of Professional Engineers
Certificate Of Authorization No. 9813
Wendell W. Haney P.E. No. 54158
7-23-08

PRODUCT: THERMA-TRU
GLAZED FIBERGLASS DOOR
IN/OUTSWING "IMPACT"

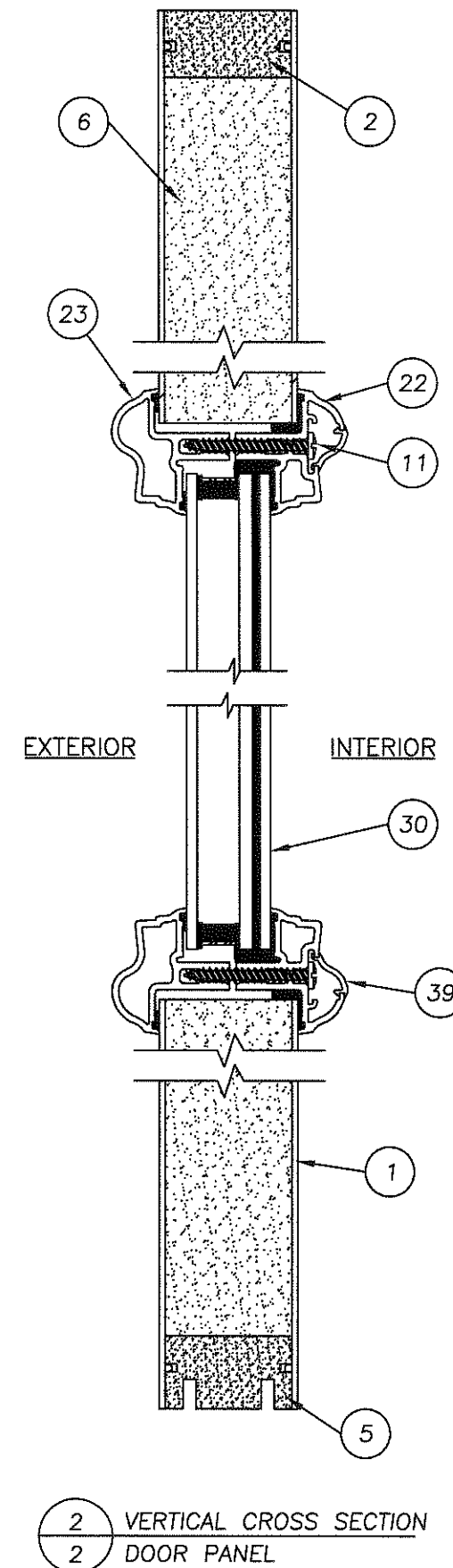
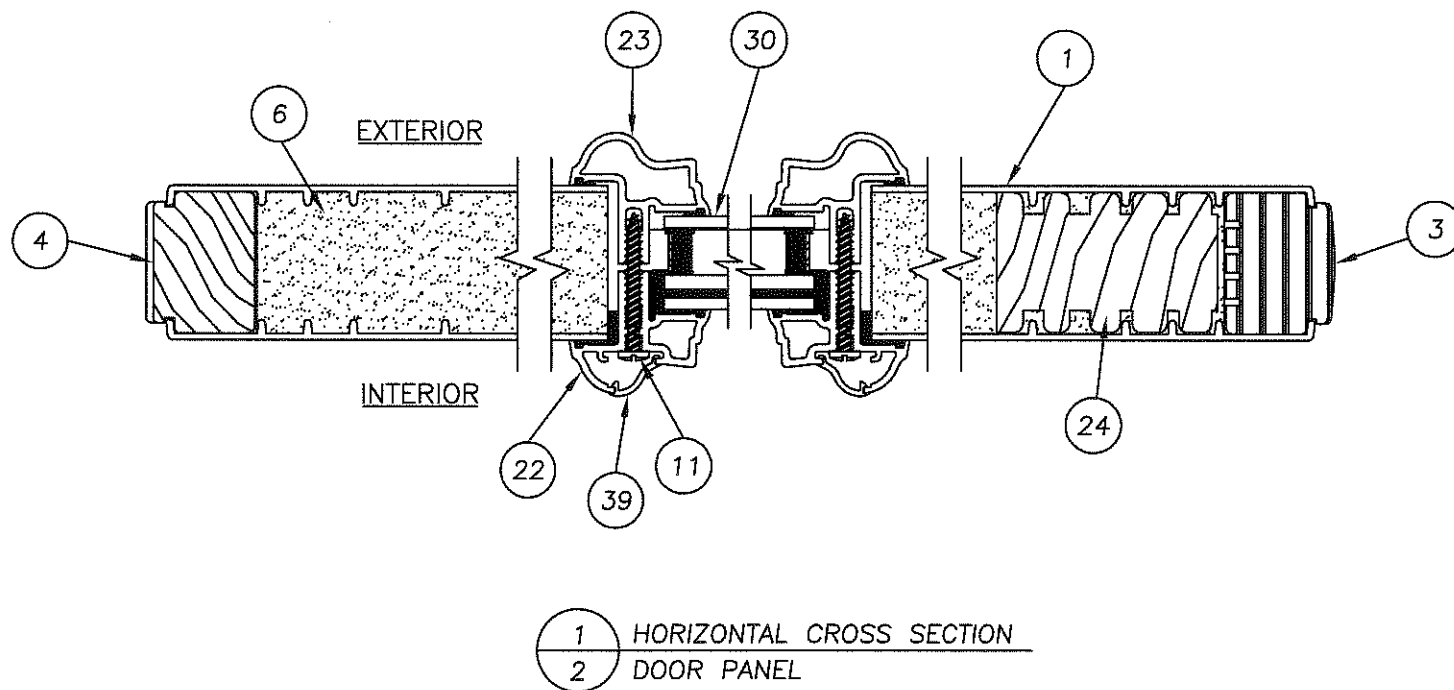
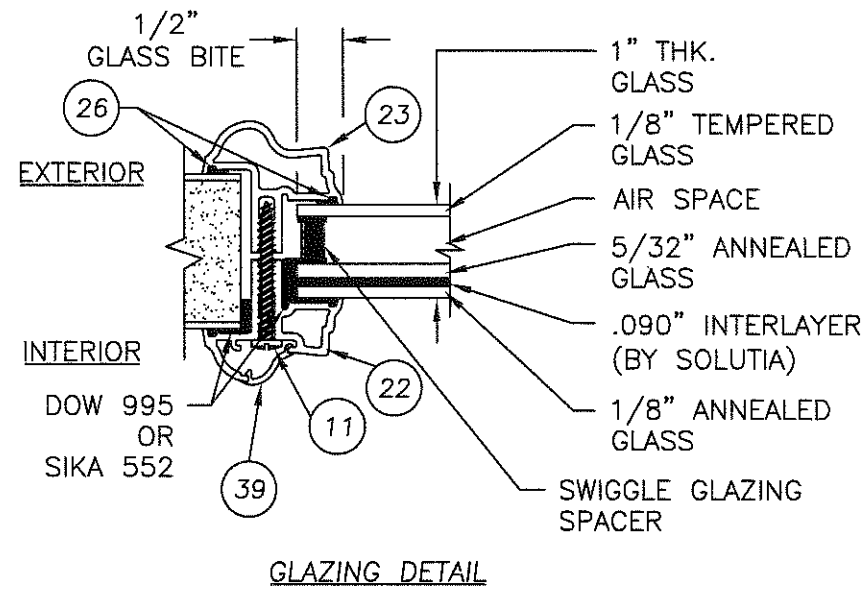
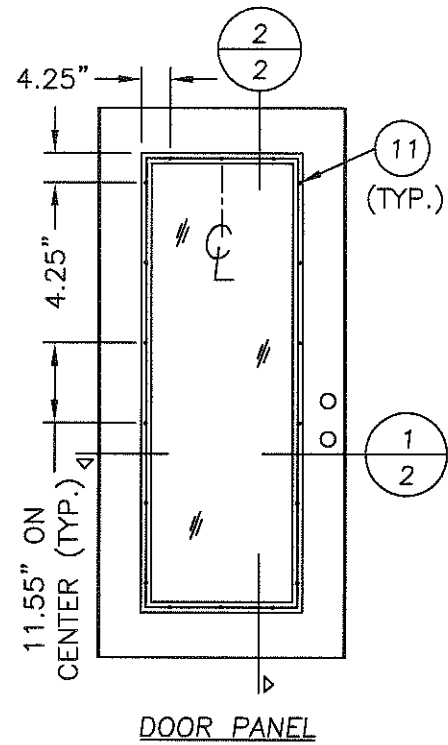
PART OR ASSEMBLY:
TYPICAL ELEVATION, DESIGN
PRESSURES & GENERAL NOTES

NO.	DATE	REV. LOCK & DEADBOLT MODEL	AL	BY
1	7/9/08			

REVISIONS

DATE: 12/15/06
SCALE: N.T.S.
DWG. BY: AEM
CHK. BY: WWH
DRAWING NO.:
TX-3180
SHEET 1 OF 8

K:\A - PROJECTS\PROJECT FOLDERS\PROJ 1.101 - 1.200\PT.1.105\U. RWBC Drawings\TX-3180\TX-3180 REV1\TX-3180-2.DWG, Model



Documents Prepared By:

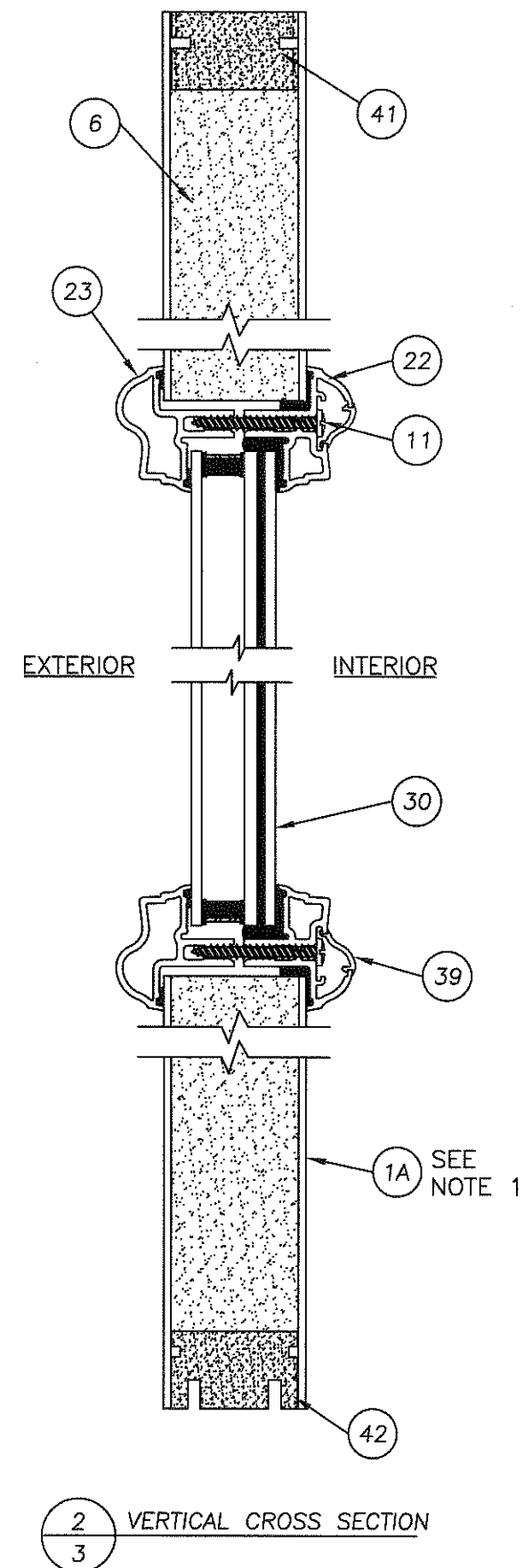
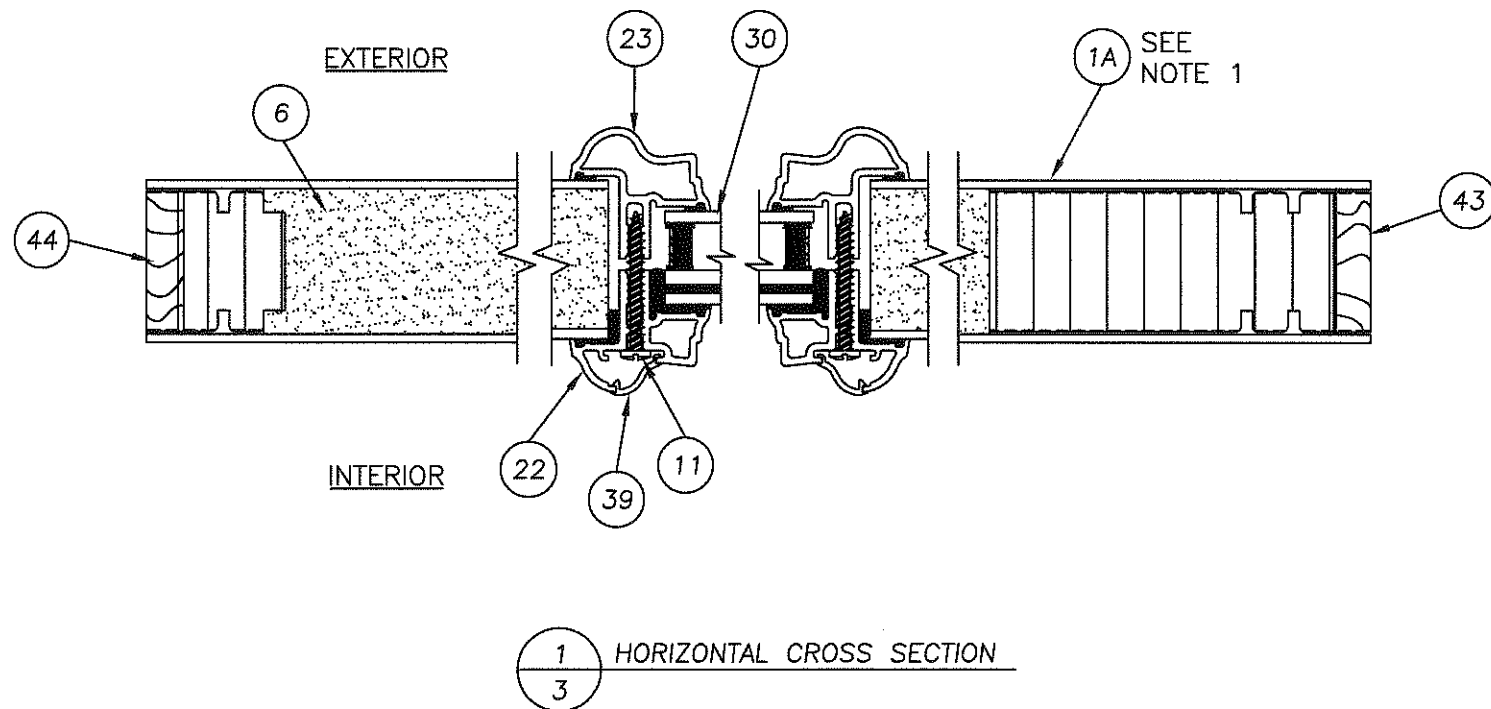
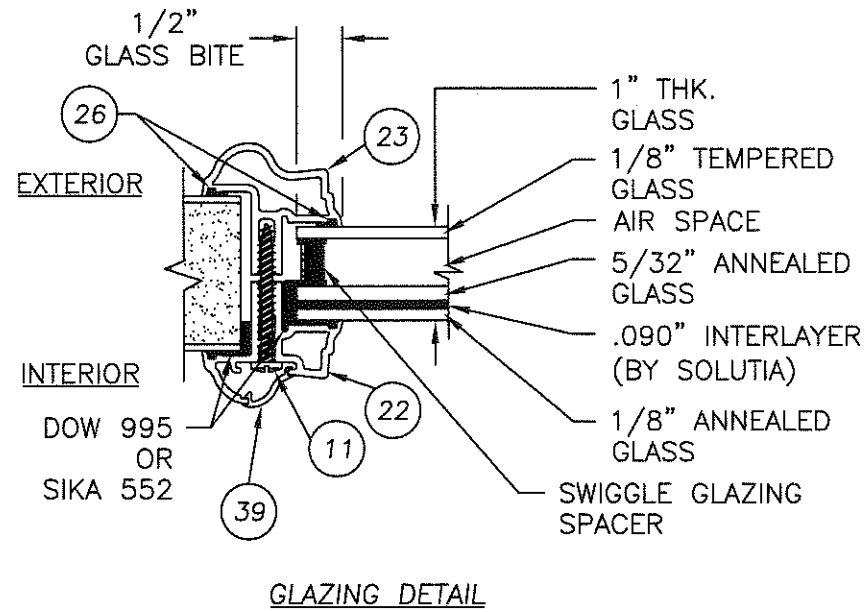
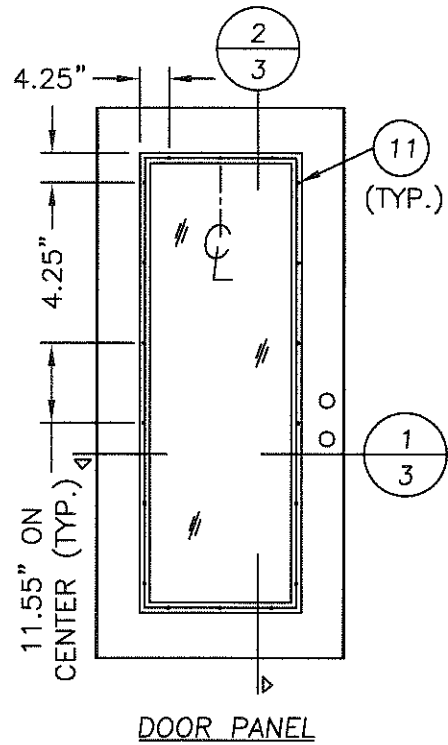
RW BUILDING CONSULTANTS, INC.
P.O. Box 230 Valrico FL 33595
Phone No.: 813.659.9197
Florida Board of Professional Engineers
Certificate of Authorization No. 9813
Wendell W. Hanger 7-23-08
Wendell W. Hanger, P.E. No. 54158

PRODUCT: THERMA-TRU GLAZED FIBERGLASS DOOR IN/OUTSWING "IMPACT"
PART OR ASSEMBLY: "SMOOTH STAR" DOOR PANEL CROSS SECTIONS

NO.	DATE	REV.	LOCK & DEADBOLT MODEL	AL	BY
1	7/9/08				

REVISIONS

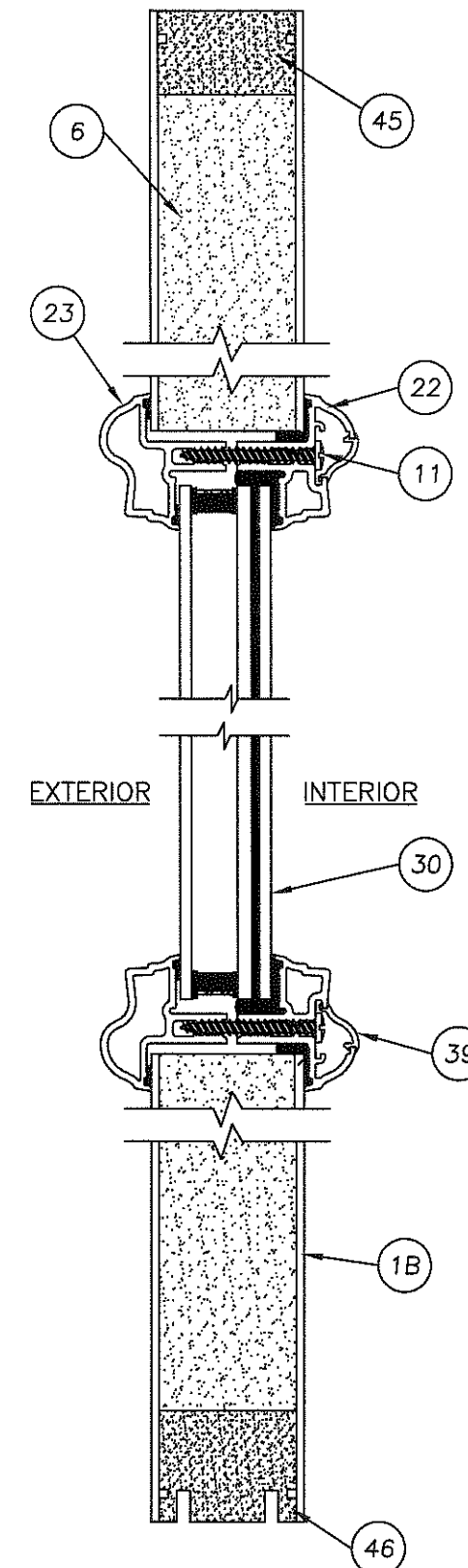
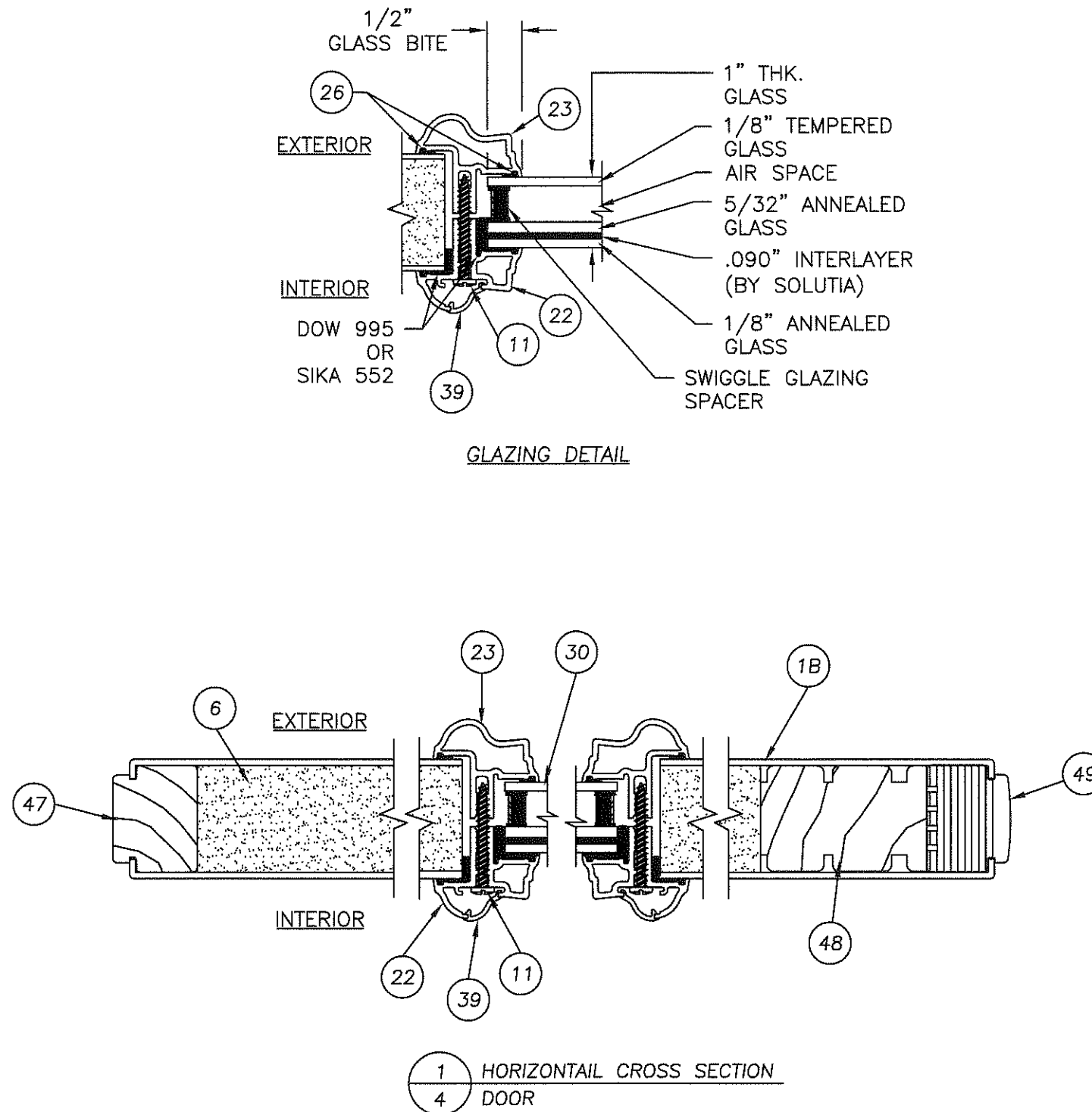
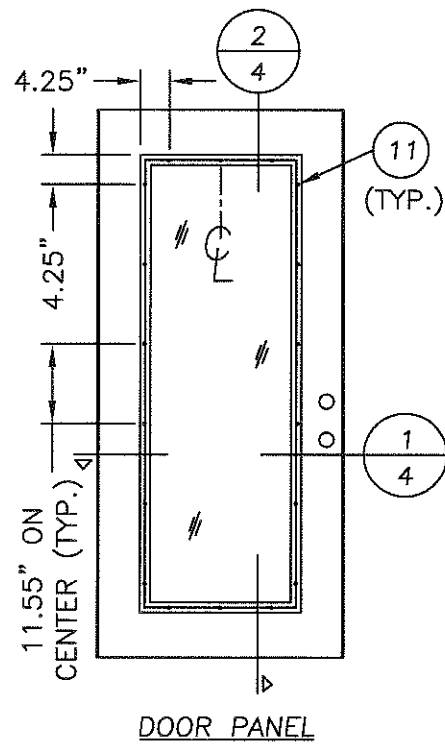
DATE: 12/15/06
SCALE: N.T.S.
DWG. BY: AEM
CHK. BY: WWH
DRAWING NO.: TX-3180
SHEET 2 OF 8



NOTE:
 1. "RUSTIC" PANEL UTILIZES MAHOGANY GRAINING PATTERN,
 "CLASSIC CRAFT" PANEL UTILIZES OAK GRAINING PATTERN.

Documents Prepared By:
RW BUILDING CONSULTANTS, INC.
 P.O. Box 230 Vairico FL, 33595
 Phone No.: 813.659.9197
 Florida Board of Professional Engineers
 Certificate Of Authorization No. 9813
Wendell W. Handy 7-23-08
 Wendell W. Handy, P.E. No. 54158

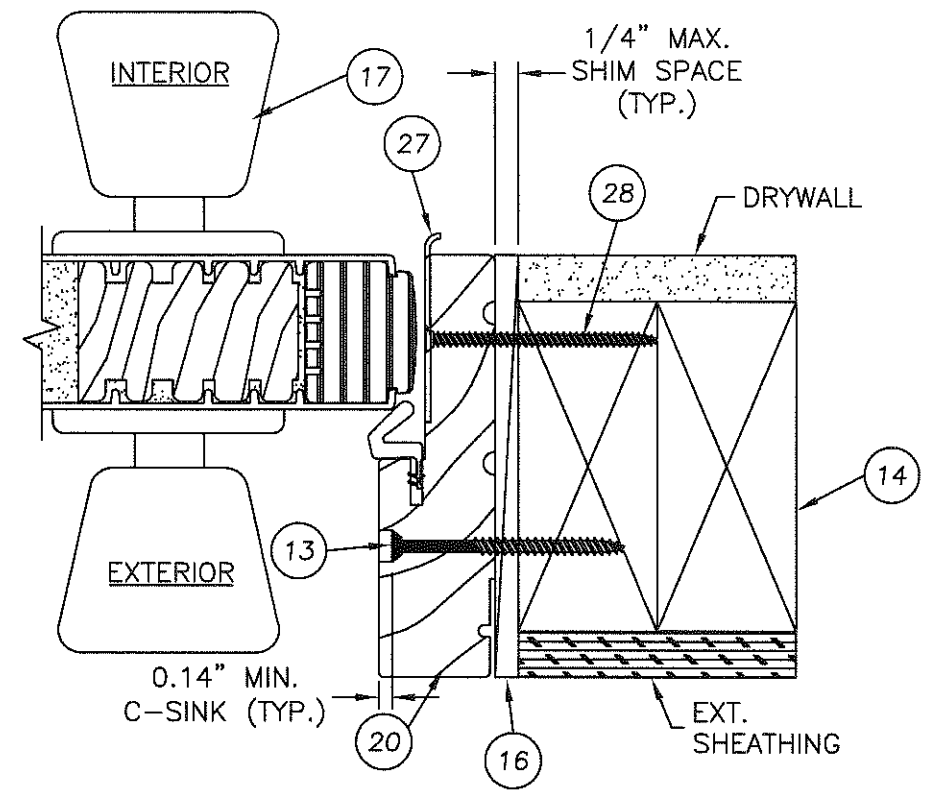
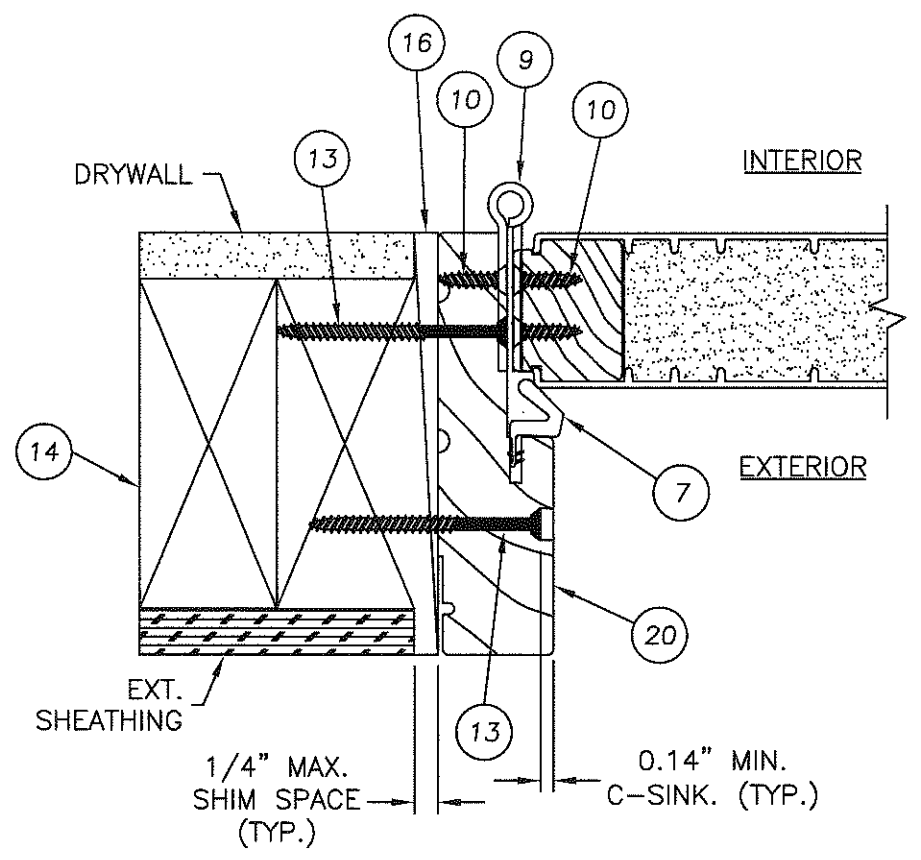
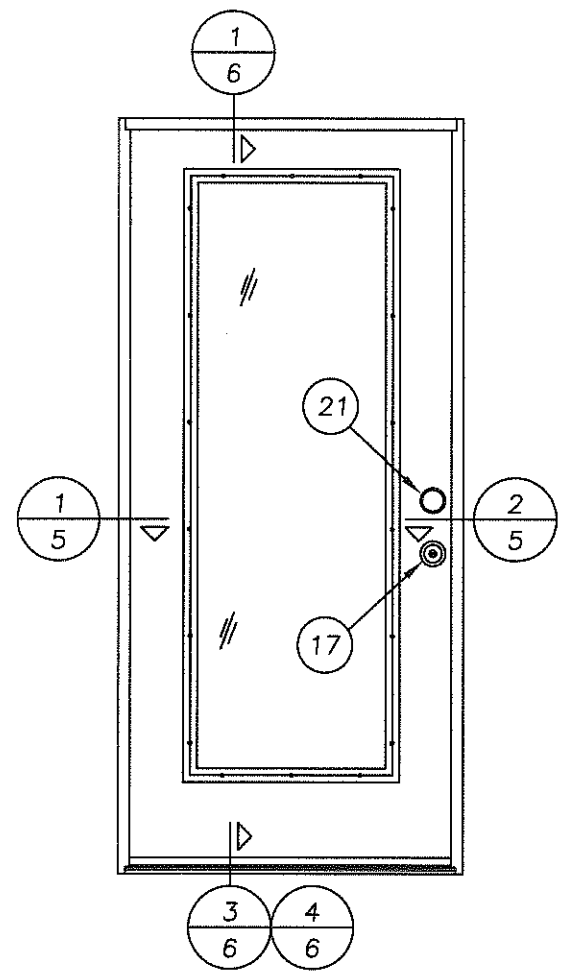
PRODUCT:		THERMA-TRU GLAZED FIBERGLASS DOOR IN/OUTSWING "IMPACT"	
PART OR ASSEMBLY:		"CLASSIC CRAFT" & "RUSTIC" DOOR PANEL CROSS SECTIONS	
NO.	DATE	REV. LOCK & DEADBOLT MODEL	AL BY
1	7/9/08		
REVISIONS			
DATE: 12/15/06		SCALE: N.T.S.	
DWG. BY: AEM		CHK. BY: WWH	
DRAWING NO.: TX-3180		SHEET 3 OF 8	



Documents Prepared By: **R.W. BUILDING CONSULTANTS, INC.**
P.O. Box 230 Valrico FL 33595
Phone No.: 813.659.9197
Florida Board of Professional Engineers
Certificate Of Authorization No. 9813
Wendell W. Haney 7-23-08
Wendell W. Haney P.E. No. 54158

PRODUCT:	THERMA-TRU GLAZED FIBERGLASS DOOR IN/OUTSWING "IMPACT"
PART OR ASSEMBLY:	"FIBER CLASSIC" DOOR PANEL CROSS SECTIONS
NO.	1
DATE	7/9/08
REV.	LOCK & DEADBOLT MODEL
BY	AL
REVISIONS	
DATE:	12/15/06
SCALE:	N.T.S.
DWG. BY:	AEM
CHK. BY:	WWH
DRAWING NO.:	TX-3180
SHEET	4 OF 8

© 2008 R.W. BUILDING CONSULTANTS INC.



1 HORIZONTAL CROSS SECTION
5 INSWING CONFIGURATION
("SMOOTH STAR SERIES" SHOWN)

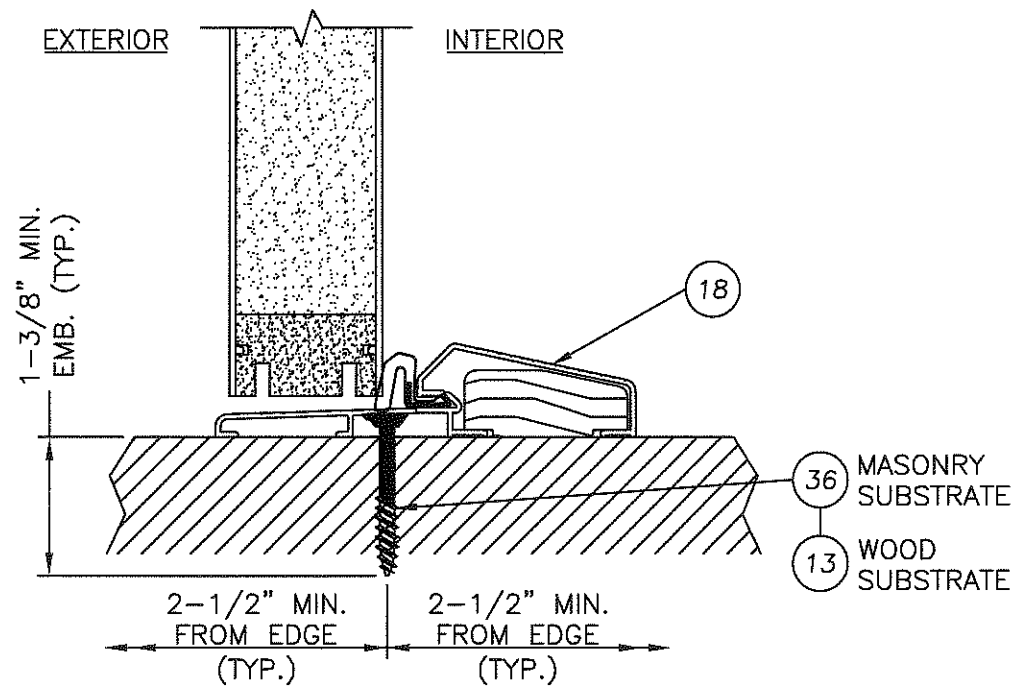
2 HORIZONTAL CROSS SECTION
5 INSWING CONFIGURATION
("SMOOTH STAR SERIES" SHOWN)

DATE:	12/15/06
SCALE:	N.T.S.
DWG. BY:	AEM
CHK. BY:	WWH
DRAWING NO.:	TX-3180
SHEET	5 OF 8

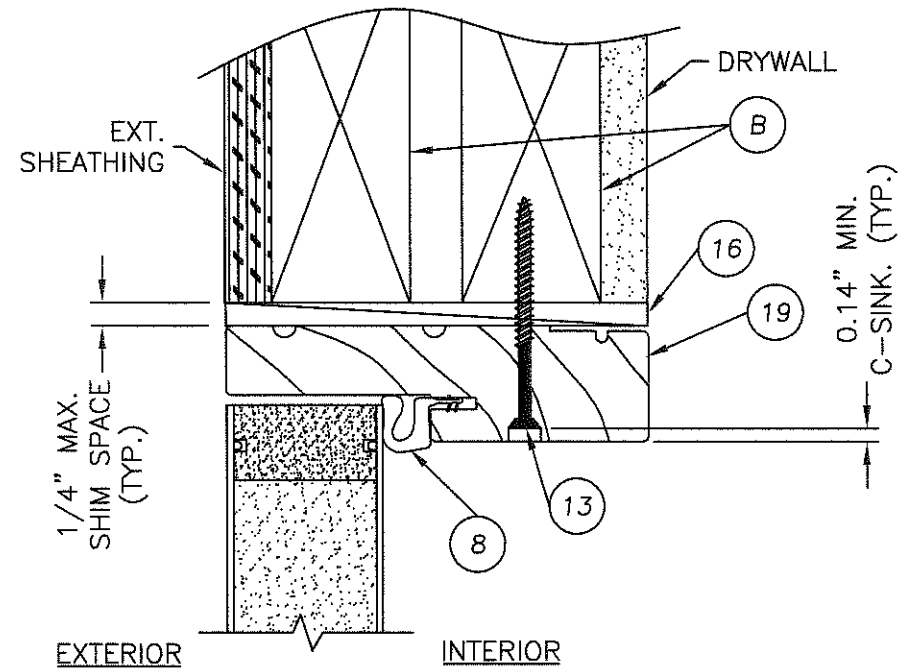
PRODUCT:	THERMA-TRU GLAZED FIBERGLASS DOOR IN/OUTSWING "IMPACT"
PART OR ASSEMBLY:	HORIZONTAL CROSS SECTIONS
NO.	1
DATE	7/9/08
REV.	REV. LOCK & DEADBOLT MODEL
AL	AL
BY	BY

Documents Prepared By:
RW BUILDING CONSULTANTS, INC.
 P.O. Box 230 Valrico FL 33595
 Phone No.: 813.659.9197
 Florida Board of Professional Engineers
 Certificate Of Authorization No. 9813
Wendell W. Hervey 7-23-08
 Wendell W. Hervey, P.E. No. 54158

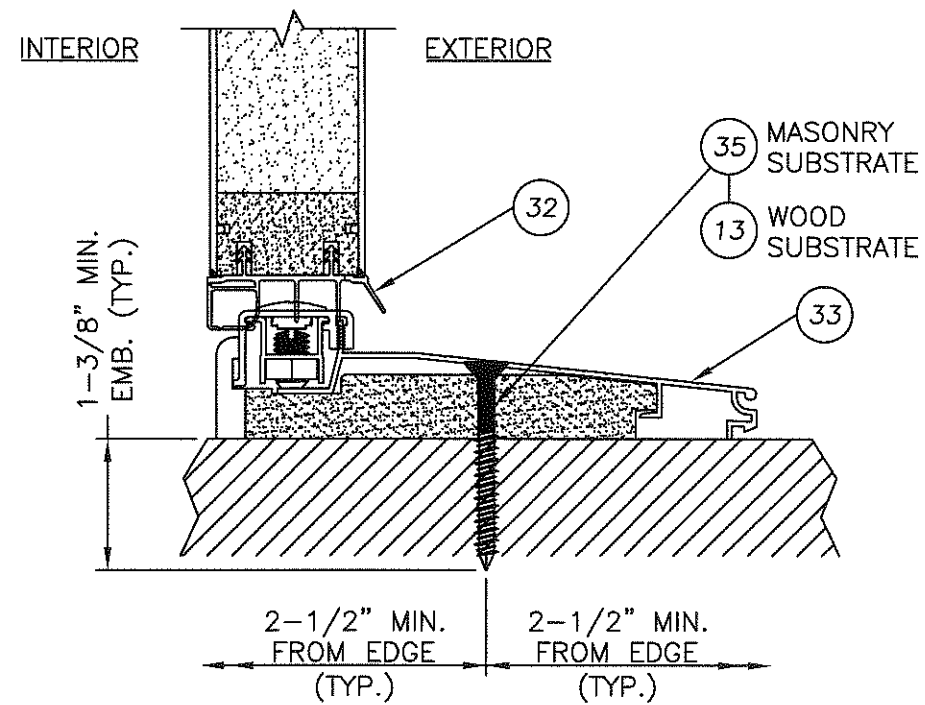
R:\Projects\TX-3180\Drawings\TX-3180.dwg REV 1/1/08 11:31:00 AM 11/15/08



3 VERTICAL CROSS SECTION
6 OUTSWING CONFIGURATION
("SMOOTH STAR SERIES" SHOWN)



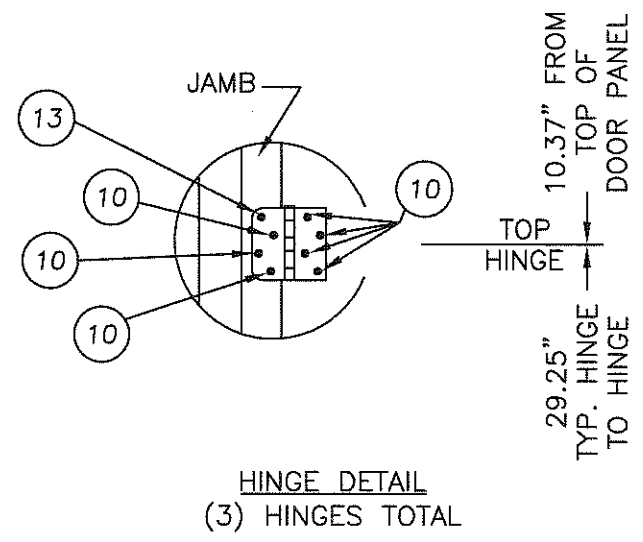
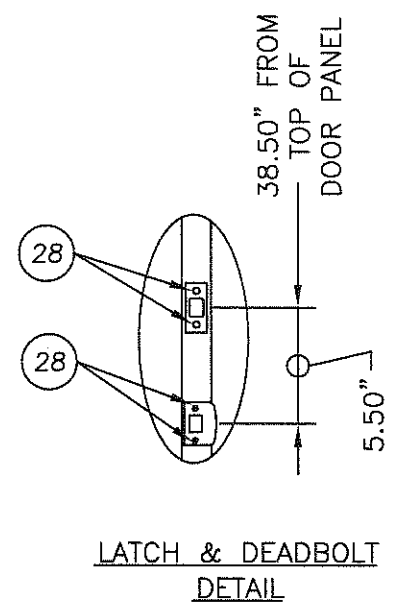
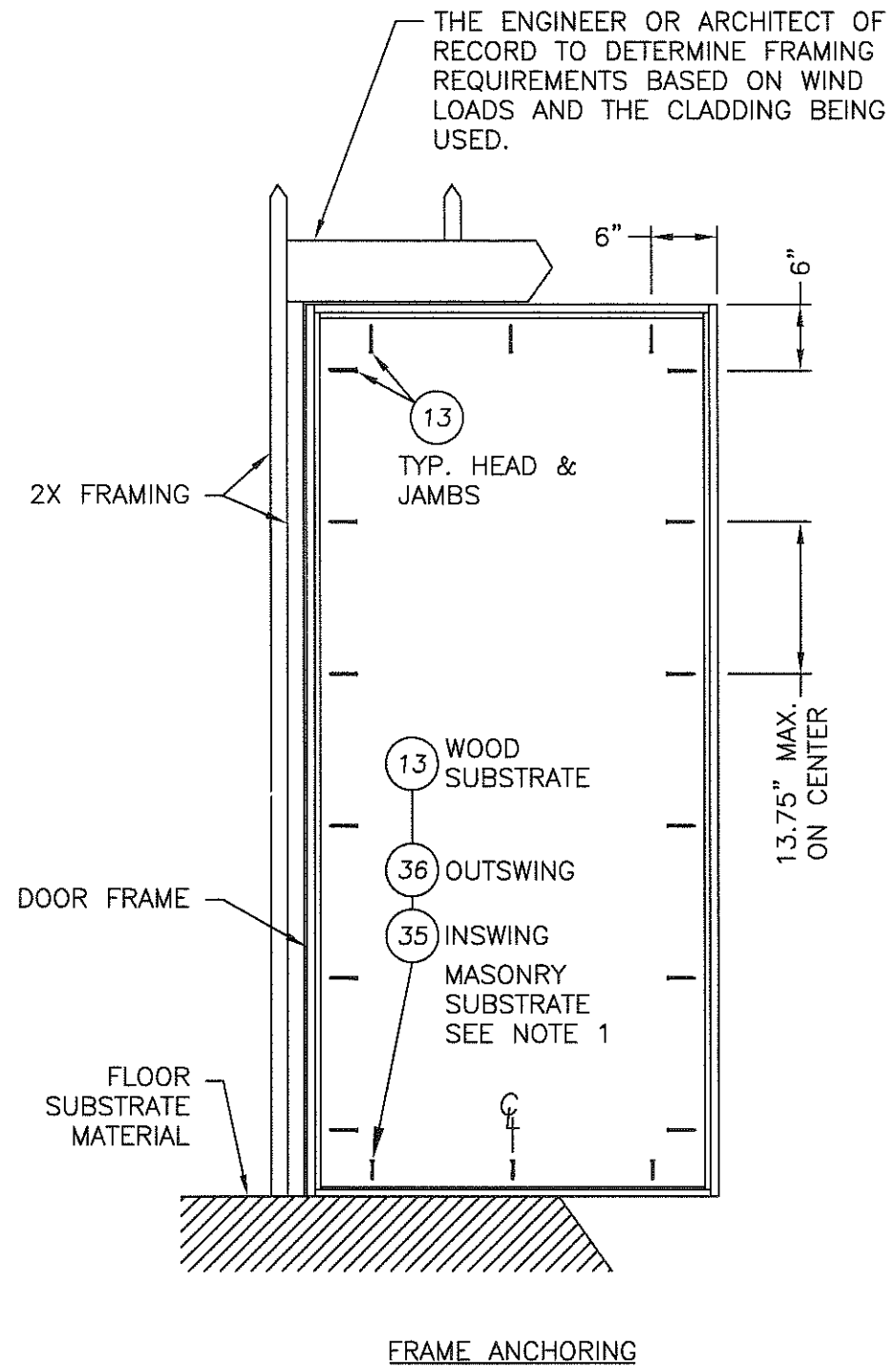
1 VERTICAL CROSS SECTION
6 ("SMOOTH STAR SERIES" SHOWN)



4 VERTICAL CROSS SECTION
6 INSWING CONFIGURATION
("SMOOTH STAR SERIES" SHOWN)

PRODUCT:		THERMA-TRU GLAZED FIBERGLASS DOOR IN/OUTSWING IMPACT	
PART OR ASSEMBLY:		VERTICAL CROSS SECTIONS	
NO.	DATE	REV. LOCK & DEADBOLT MODEL	AL BY
1	7/9/08		
REVISIONS			
DATE: 12/15/06			
SCALE: N.T.S.			
DWG. BY: AEM			
CHK. BY: WWH			
DRAWING NO.: TX-3180			
SHEET 6 OF 8			

Documents Prepared By:
RW BUILDING CONSULTANTS, INC.
 P.O. Box 230 Valrico FL 33595
 Phone No.: 813.659.9197
 Florida Board of Professional Engineers
 Certificate Of Authorization No. 9813
Wendell W. Hensley 7-23-08
 Wendell W. Hensley P.E. No. 54158



NOTES:

1. 1/4" ITW CONCRETE SCREWS ANCHORING FRAME AND/OR SILL REQUIRE A MINIMUM 2-1/2" CLEARANCE TO MASONRY EDGES AND A MINIMUM 3" CLEARANCE TO ADJACENT CONCRETE SCREWS UNLESS OTHERWISE NOTED BY CONCRETE SCREW MANUFACTURER.

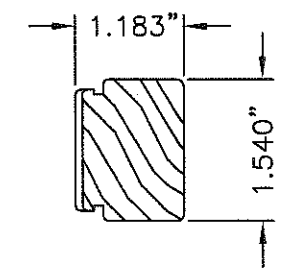
DATE:	12/15/06
SCALE:	N.T.S.
DWG. BY:	AEM
CHK. BY:	WWH
DRAWING NO.:	TX-3180
SHEET	7 OF 8

PRODUCT:	THERMA-TRU GLAZED FIBERGLASS DOOR IN/OUTSWING "IMPACT"
PART OR ASSEMBLY:	FRAME ANCHORING

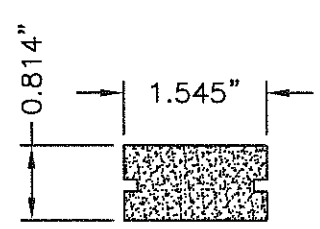
Documents Prepared By:
RW BUILDING CONSULTANTS, INC.
 P.O. Box 230 Vairico FL 33595
 Phone No.: 813.659.9197
 Florida Board of Professional Engineers
 Certificate of Authorization No. 9813
Wendell W. Hagrey 7-23-08
 Wendell W. Hagrey, P.E. No. 54158

K:\A - Projects\Project Folders\Proj 1101 - 1200\p1101\DWG - 3180 REV1\X-3180-8.DWG, Model

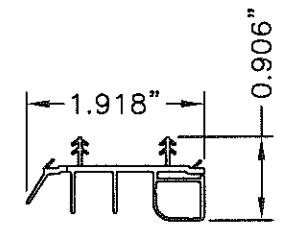
Item	DESCRIPTION	Material
1	DOOR SKIN; SMOOTH STAR SERIES (.065" MIN.)	FIBERGLASS
1A	DOOR SKIN; CLASSIC CRAFT & RUSTIC SERIES (.090" MIN.)	FIBERGLASS
1B	DOOR SKIN; FIBER CLASSIC SERIES (.065" MIN.)	FIBERGLASS
2	TOP RAIL DOOR THERMA-TRU (SMOOTH STAR)	COMP.
3	LATCH STILE DOOR THERMA-TRU (SMOOTH STAR)	LVL
4	HINGE STILE DOOR THERMA-TRU (SMOOTH STAR)	WOOD
5	BOTTOM RAIL DOOR THERMA-TRU (SMOOTH STAR)	COMP.
6	POLYURETHANE FOAM	FOAM
7	MEDIUM REACH COMPRESSION WEATHER-STRIP (THERMA-TRU)	FOAM
8	LONG REACH COMPRESSION WEATHER-STRIP (THERMA-TRU)	FOAM
9	4" x 4" HINGE .097" THK. (THERMA-TRU)	STEEL
10	#10 x 3/4" PFH WOOD SCREW (Hinge to Frame)	STEEL
11	#10 x 1-1/2" PPH SHEET METAL SCREW	STEEL
12	#10 x 2" PFH WOOD SCREW	STEEL
13	#10 x 2-1/2" PFH WOOD SCREW	STEEL
14	2X FRAMING	WOOD
15	NOT USED	-
16	MAX. 1/4" SHIM MATERIAL	WOOD
17	LOCK - KWIKSET ULTRAMAX 740	STEEL
18	THRESHOLD OUTSWING (THERMA-TRU)	ALUM./WOOD
19	HEADER JAMB (4.656" x 1.25" THERMA-TRU, PINE)	WOOD
20	SIDE JAMB (4.656" x 1.25" THERMA-TRU) (FJ PINE)	WOOD
21	DEADBOLT - KWIKSET 780 SINGLE CYLINDER	STEEL
22	INTERIOR LITE FRAME	ALUM.
23	EXTERIOR LITE FRAME	ALUM.
24	LOCK BLOCK	WOOD
25	SILICONE CAULK	SILICONE
26	CELLULAR GLAZING TAPE	FOAM
27	LATCH STRIKE	STEEL
28	#8 x 2-1/2" PFH WOOD SCREW	STEEL
29	#8 x 3" PFH SCREW	STEEL
30	1" THK. INSUL. LAMINATED GLASS (INTERLAYER BY SOLUTIA) 1/8" TEMP.- AIR - 5/32" ANN. / .090" INTERLAYER / 1/8" ANN.	GLASS
31	NOT USED	-
32	DOOR BOTTOM SWEEP (INSWING)	PVC
33	INSWING THRESHOLD	ALUM./COMP.
34	NOT USED	-
35	1/4" x 2-1/4" ITW TAPCON	STEEL
36	1/4" x 1-3/4" ITW TAPCON	STEEL
37	NOT USED	-
38	NOT USED	-
39	LITE FRAME TRIM	PVC
40	#9 x 3" PFH WOOD SCREW	STEEL
41	TOP RAIL (CLASSIC CRAFT & RUSTIC)	COMP.
42	BOTTOM RAIL (CLASSIC CRAFT & RUSTIC)	COMP.
43	LATCH SIDE STILE (CLASSIC CRAFT & RUSTIC)	LSL / OAK
44	HINGE SIDE STILE (CLASSIC CRAFT & RUSTIC)	LSL / OAK
45	TOP RAIL (FIBER CLASSIC)	COMP.
46	BOTTOM RAIL (FIBER CLASSIC)	COMP.
47	HINGE SIDE STILE (FIBER CLASSIC)	WOOD
48	LOCK BLOCK (FIBER CLASSIC)	WOOD
49	LATCH SIDE STILE (FIBER CLASSIC)	LVL / OAK



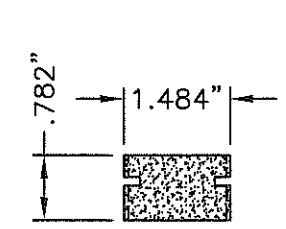
4 HINGE STILE (SMOOTH STAR)



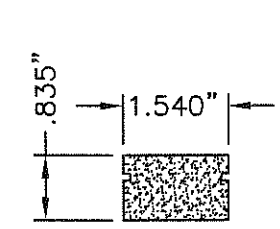
2 DOOR TOP RAIL (SMOOTH STAR)



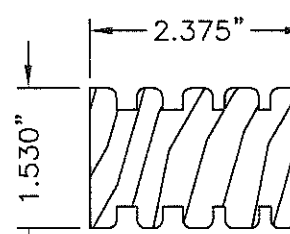
32 SWEEP



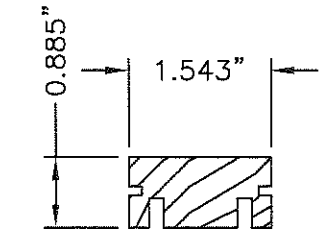
41 TOP RAIL (CLASSIC CRAFT & RUSTIC)



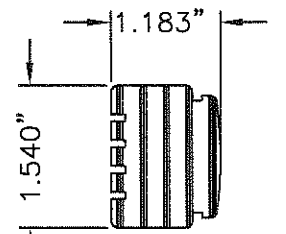
45 TOP RAIL (FIBER CLASSIC)



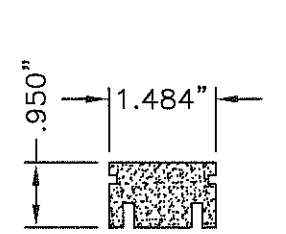
24 LOCK BLOCK (SMOOTH STAR)



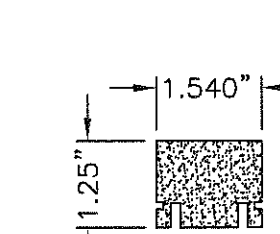
5 DOOR BTM. RAIL (SMOOTH STAR)



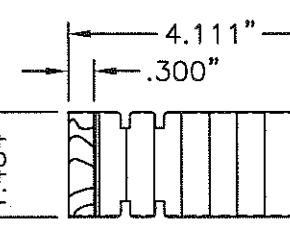
3 LATCH STILE (SMOOTH STAR)



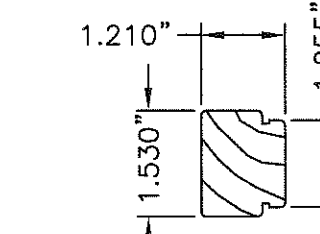
42 BOTTOM RAIL (CLASSIC CRAFT & RUSTIC)



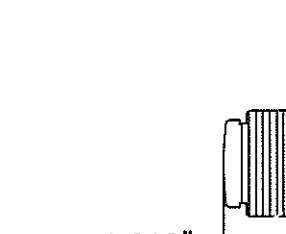
46 BOTTOM RAIL (FIBER CLASSIC)



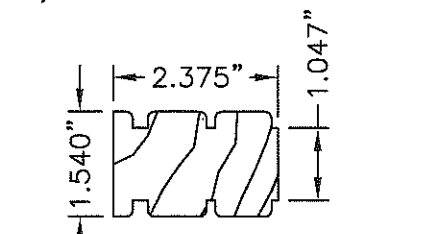
43 LATCH SIDE STILE (CLASSIC CRAFT)



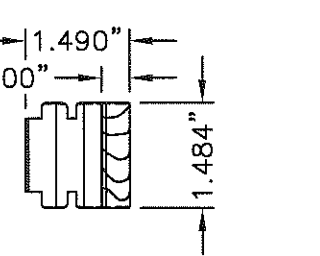
47 HINGE SIDE STILE (FIBER CLASSIC)



49 LATCH SIDE STILE (FIBER CLASSIC)

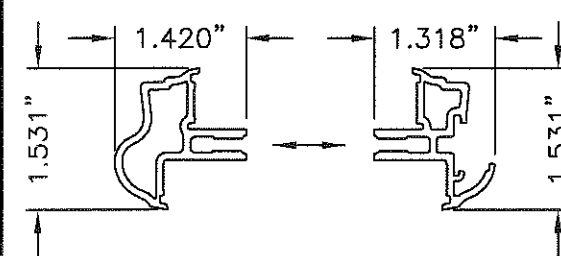


48 LOCK BLOCK (FIBER CLASSIC)

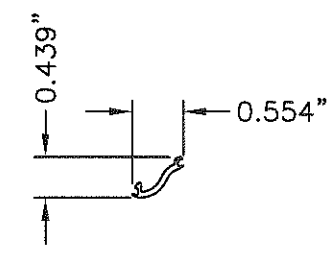


44 HINGE SIDE STILE * (CLASSIC CRAFT & RUSTIC)

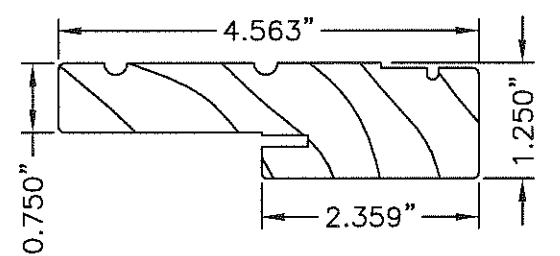
* HINGE SIDE STILE
CORE MATERIAL: LVL OR LSL
ALTERNATE CORE MATERIAL: PONDEROSA, RADIATA, PULAI, ELLIOTTII, TAEDA OR SUGAR PINE, DOUGLAS OR WHITE FIR, CEDAR, INCENSE CEDAR OR REDWOOD.



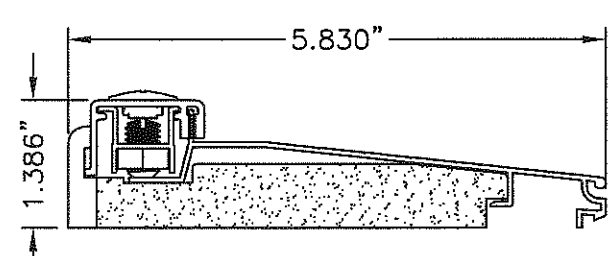
23 EXT. LITE FRAME 22 INT. LITE FRAME



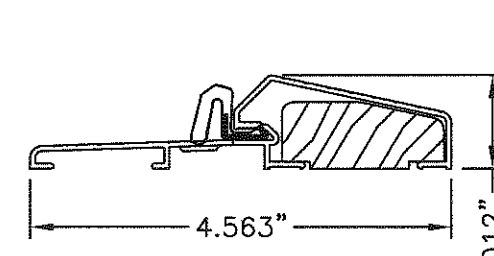
39 LITE FRAME TRIM



19 20 HEAD & SIDE JAMB



33 INSWING THRESHOLD



18 OUTSWING THRESHOLD

Documents Prepared By: **RW** BUILDING CONSULTANTS, INC.
P.O. Box 230 Valrico FL 33595
Phone No.: 813.659.9197
Florida Board of Professional Engineers
Certificate of Authorization No. 9813
Wendell W. Haney, P.E. No. 54158

PRODUCT: THERMA-TRU GLAZED FIBERGLASS DOOR IN/OUTSWING "IMPACT"

PART OR ASSEMBLY: BILL OF MATERIALS & COMPONENTS

NO.	DATE	REV.	LOCK & DEADBOLT MODEL	AL	BY
1	7/9/08				

REVISIONS

DATE: 12/15/06
SCALE: N.T.S.
DWG. BY: AEM
CHK. BY: WWH
DRAWING NO.: TX-3180
SHEET 8 OF 8

© 2008 R.W. BUILDING CONSULTANTS, INC.