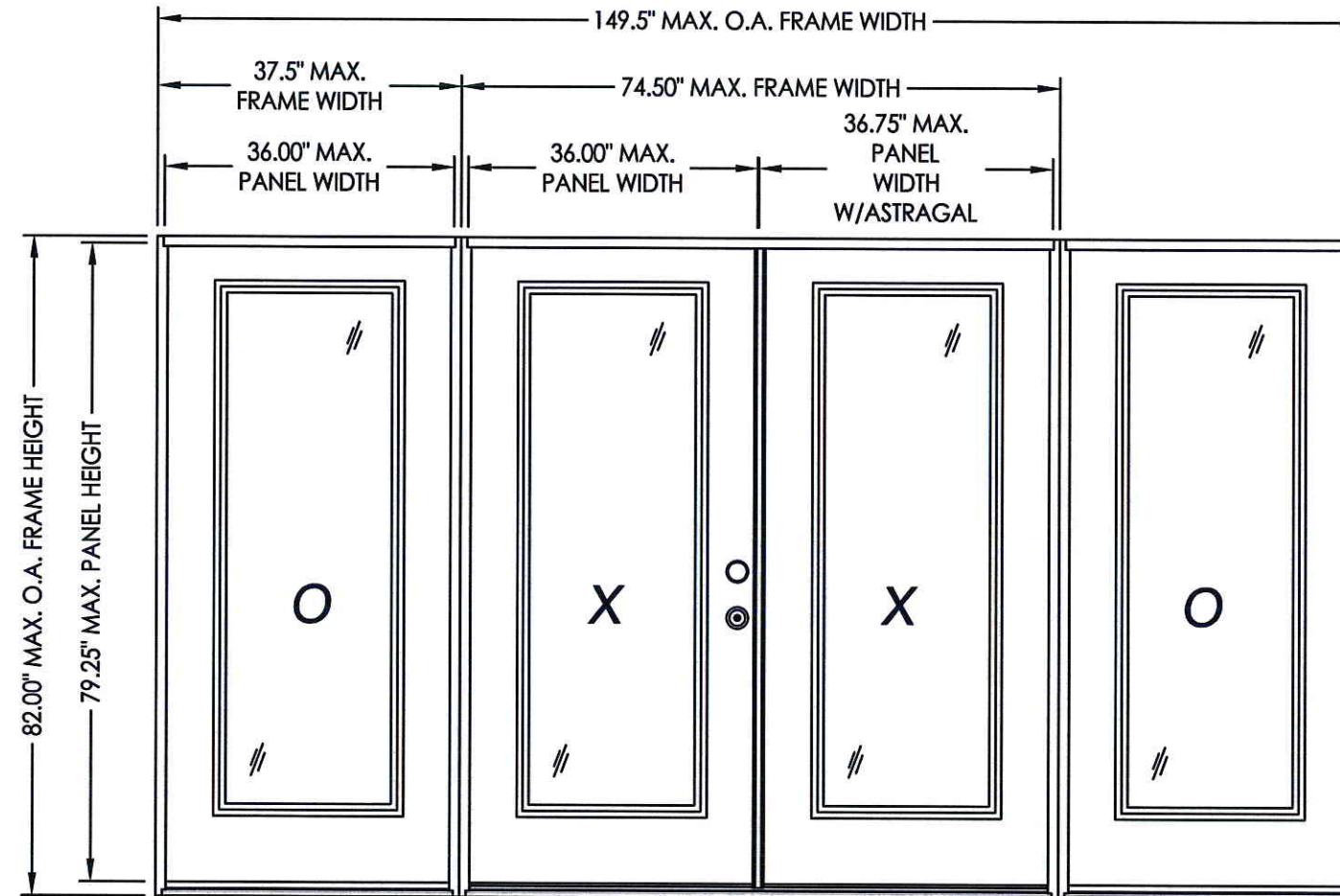


# THERMA TRU®

118 INDUSTRIAL DR., EDGERTON, OH 43517  
TEL. (419)298-1740

## "SMOOTH STAR", "FIBER CLASSIC", "CLASSIC CRAFT" & "CLASSIC CRAFT RUSTIC" GLAZED FIBERGLASS DOUBLE DOOR W/SIDELITES IN SWING / OUT SWING "IMPACT"



"SMOOTH STAR", "FIBER CLASSIC"  
"CLASSIC CRAFT" & "CLASSIC CRAFT RUSTIC"

### EVALUATED FOR USE IN THE STATE OF TEXAS

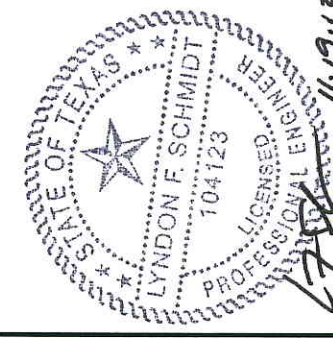
The Fiberglass Glazed Door described herein complies with the 2006 International Residential Code (IRC), Sections R301 & R613 and the 2006 International Building Code (IBC), Sections 1405.12, 1609, 1714.5, 2403 and 2404 (including Texas revisions) subject to the following conditions:

1. Anchors shall be as listed and spaced as shown in the details. Anchor embedment to base material shall be beyond wall dressing or stucco.
2. This system has been tested and evaluated as a large missile impact protective system for installation in the Seaward, Inland I and Inland II areas. This product meets missile level "D" as defined in ASTM E 1996.
3. Allowable design pressure requirements must be equal to or less than the design pressure rating shown in the design pressure chart, sheet 1 of this drawing.
4. Conditions not covered by this drawing are subject to further engineering analysis.

### TABLE OF CONTENTS

SHEET #	DESCRIPTION
1	TYPICAL ELEVATION, DESIGN PRESSURES & GENERAL NOTES
2	"SMOOTH STAR" DOOR/SIDELITE PANEL DETAILS
3	"CLASSIC CRAFT" & "CLASSIC CRAFT RUSTIC" DOOR/SIDELITE PANEL DETAILS
4	"FIBER CLASSIC" DOOR/SIDELITE PANEL DETAILS
5	HORIZONTAL CROSS SECTIONS
6	VERTICAL CROSS SECTIONS
7	VERTICAL CROSS SECTIONS
8	FRAME ANCHORING
9	BILL OF MATERIALS & COMPONENTS

SWING	OVERALL FRAME DIMENSION	OVERALL D.L.O. DOOR / SIDELITE DIMENSION	DESIGN PRESSURE (PSF)	
			POSITIVE	NEGATIVE
IN SWING	149.5" X 82.00"	21.00" X 63.25"	+47.0	-53.0
OUT SWING	149.5" X 80.62"	21.00" X 63.25"	+50.0	-50.0



Documents Prepared By: Lyndon F. Schmidt, P.E.  
TEXAS P.E. #104123

RW BUILDING CONSULTANTS, INC.  
P.O. Box 230 Valrico FL 33595  
Phone No.: 813.659.9197

TEXAS BOARD OF PROFESSIONAL ENGINEERS  
CERTIFICATE OF REGISTRATION # F-11852

PRODUCT: THERMA-TRU  
GLAZED FIBERGLASS DBL DOOR W/  
SIDELITES IN/OUTSWING "IMPACT"  
PART OR ASSEMBLY:  
TYPICAL ELEVATION, DESIGN  
PRESSURES & GENERAL NOTES

NO.	DATE	BY	REVISIONS

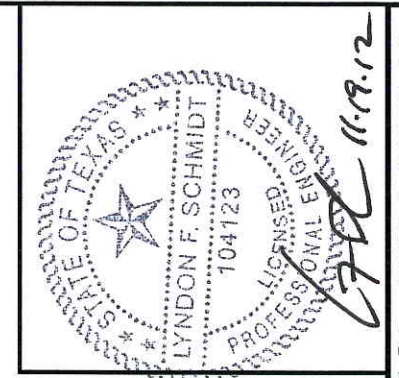
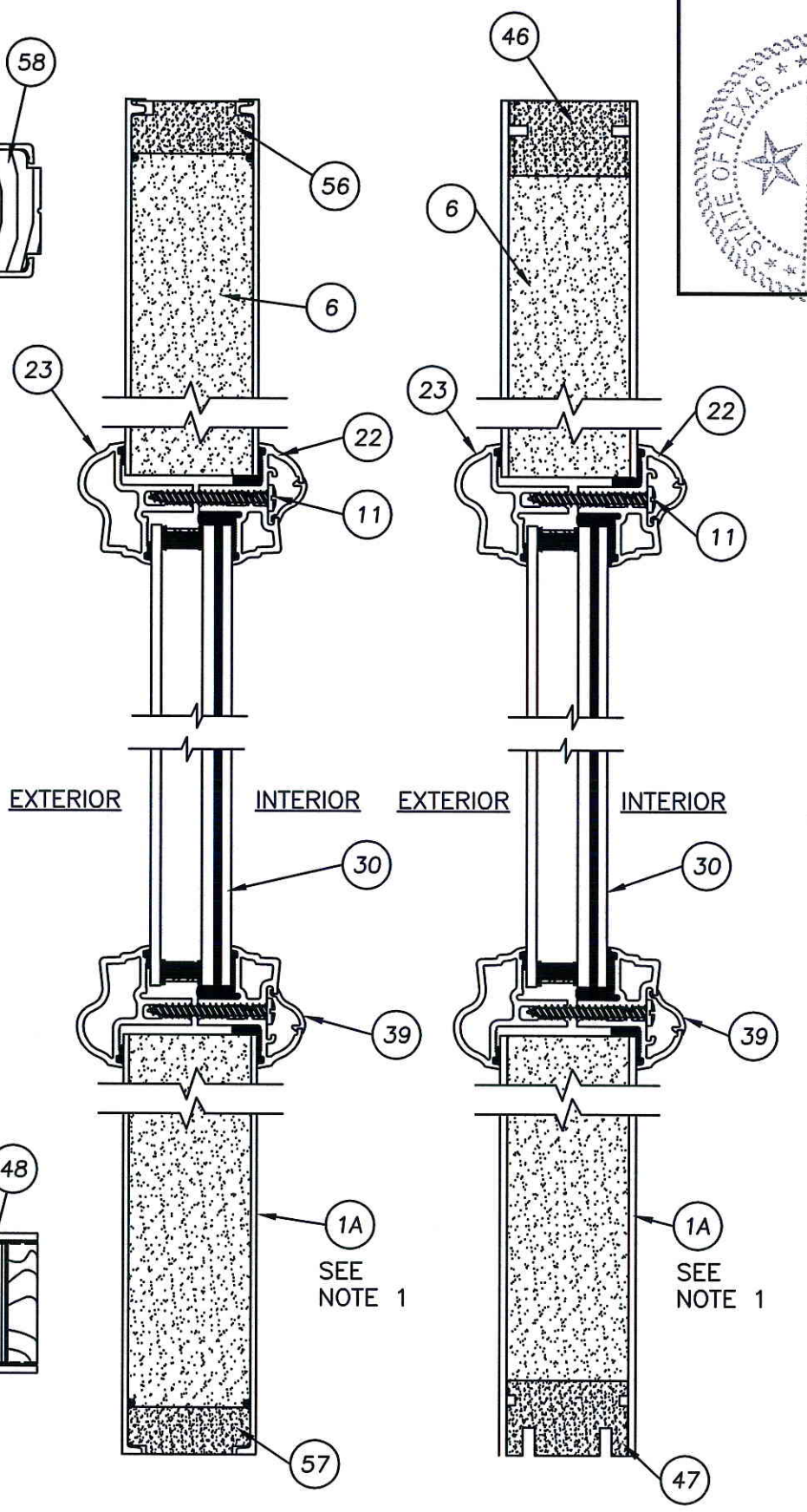
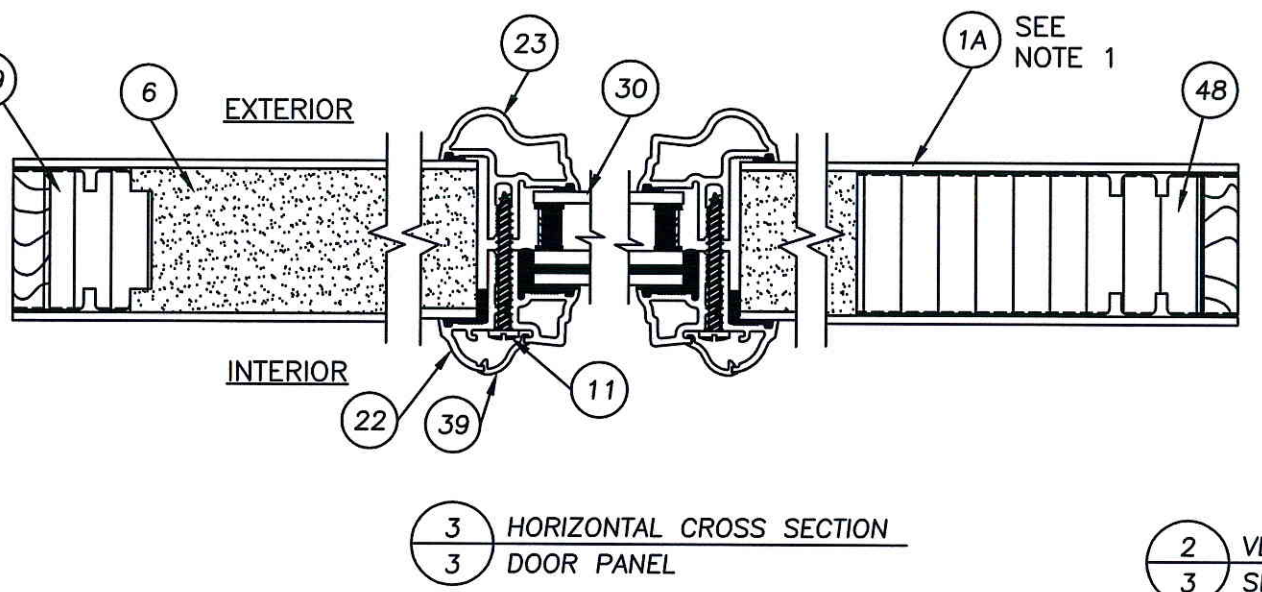
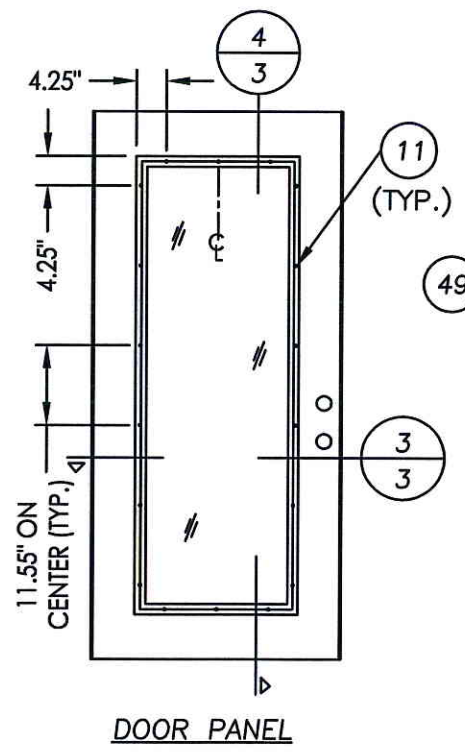
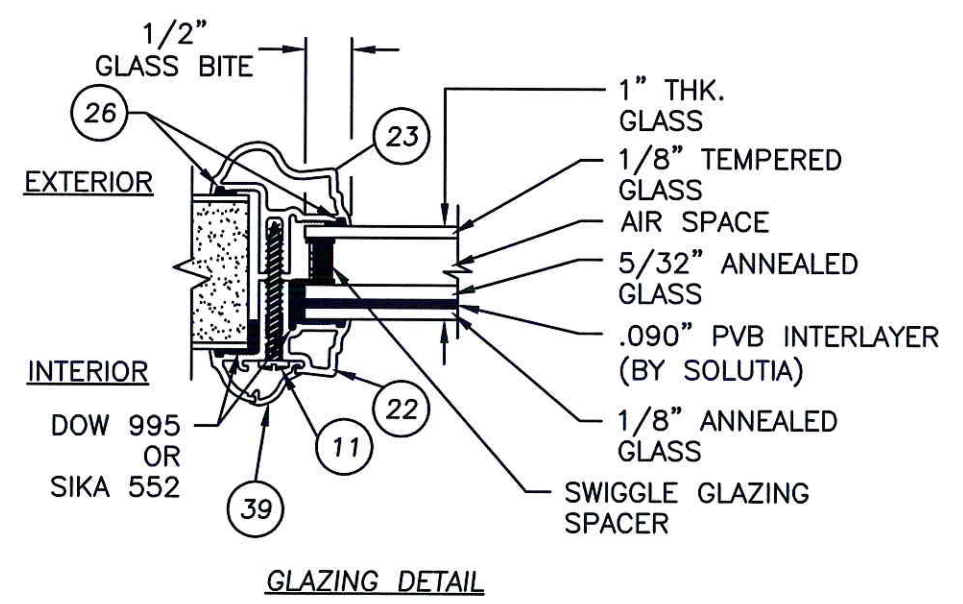
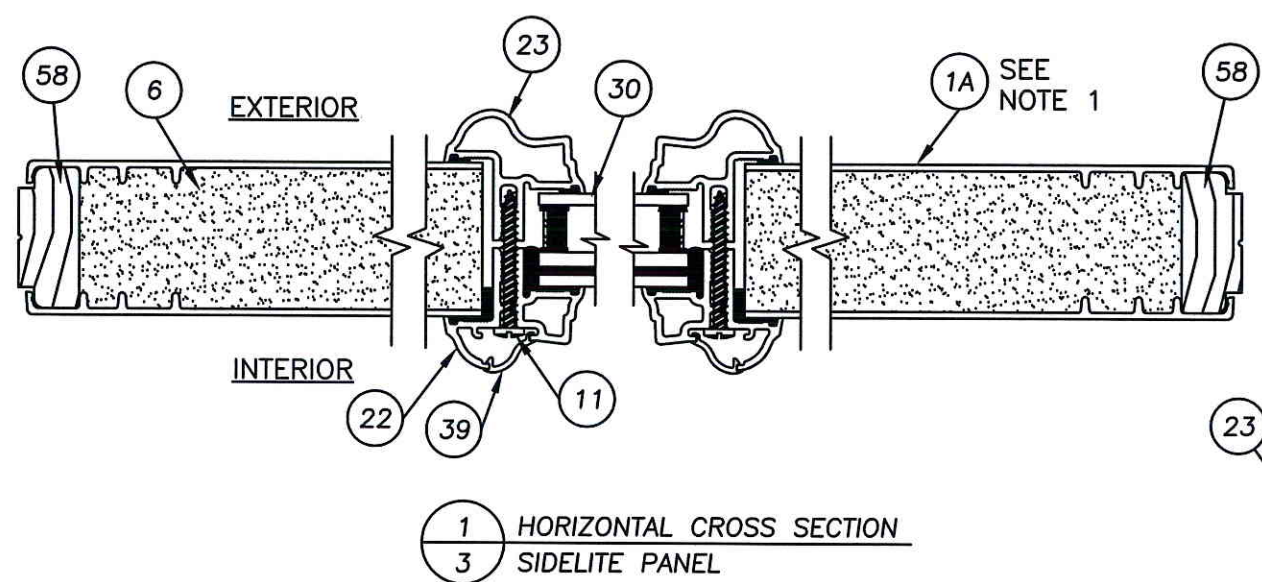
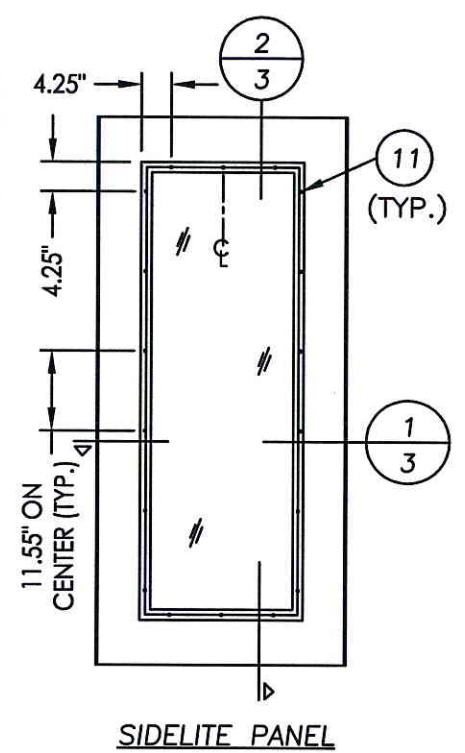
DATE: 7/17/12  
SCALE: N.T.S.  
DWG. BY: JK  
CHK. BY: LFS  
DRAWING NO.:  
TX-4194  
SHEET 1 OF 9







R:\A - Projects\Project Folders\Proj 1101 - 1200\pf1105\DWG\RWBC Drawings\TX-2012\TX-4190-94.dwg, 3.1



Documents Prepared By: Lyndon F. Schmidt, P.E.  
TEXAS P.E. #104123

**RW** BUILDING CONSULTANTS, INC.  
P.O. Box 230 Valrico FL 33595  
Phone No.: 813.659.9197

TEXAS BOARD OF PROFESSIONAL ENGINEERS  
CERTIFICATE OF REGISTRATION # F-11852

PRODUCT: THERMA-TRU GLAZED FIBERGLASS DOOR W/ SIDELITE IN/OUTSWING "IMPACT" PART OR ASSEMBLY:

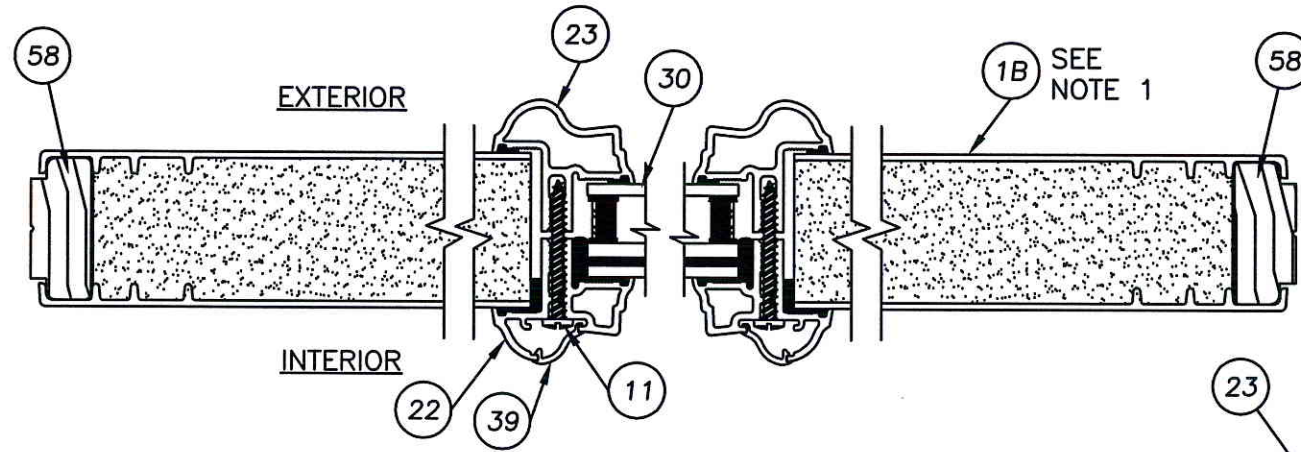
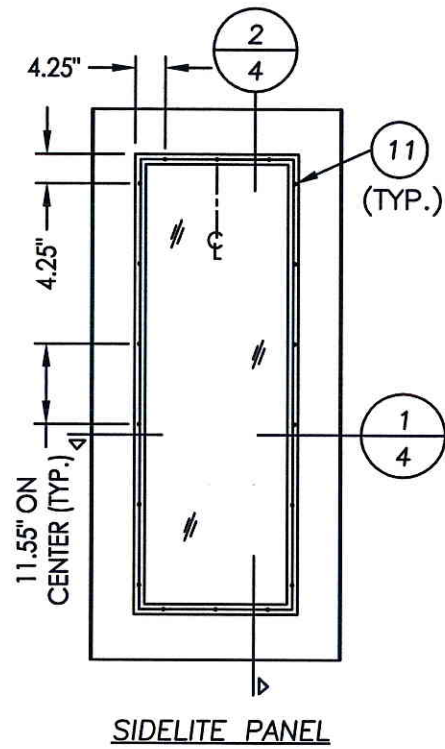
"CLASSIC CRAFT" & "C.C. RUSTIC" DOOR/SIDELITE PANEL DETAILS

NO.	DATE	REVISIONS	BY

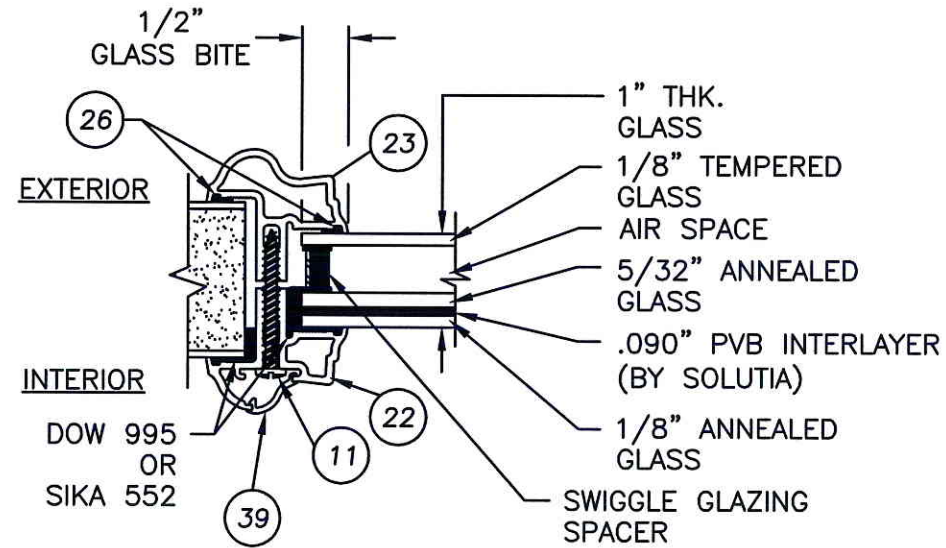
DATE: 7/17/12  
SCALE: N.T.S.  
DWG. BY: JK  
CHK. BY: LFS  
DRAWING NO.: TX-4194  
SHEET 3 OF 9



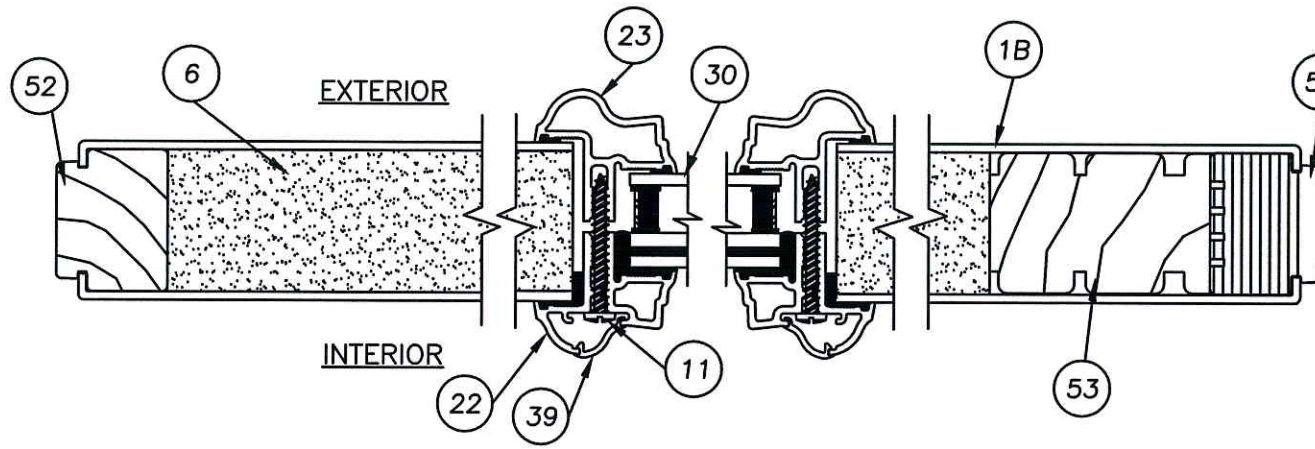
R:\A - Projects\Project Folders\Proj 1101 - 1200\pf1105\p.D. RWBC Drawings\TX-2012\TX-4190-94.dwg, 4.1



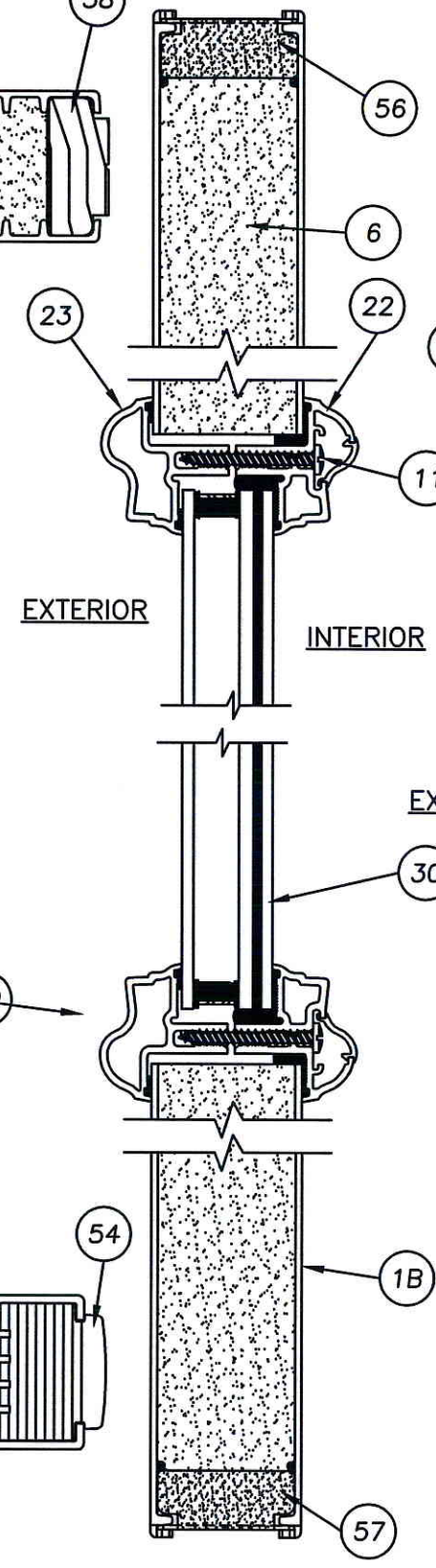
1 HORIZONTAL CROSS SECTION  
4 SIDELITE PANEL



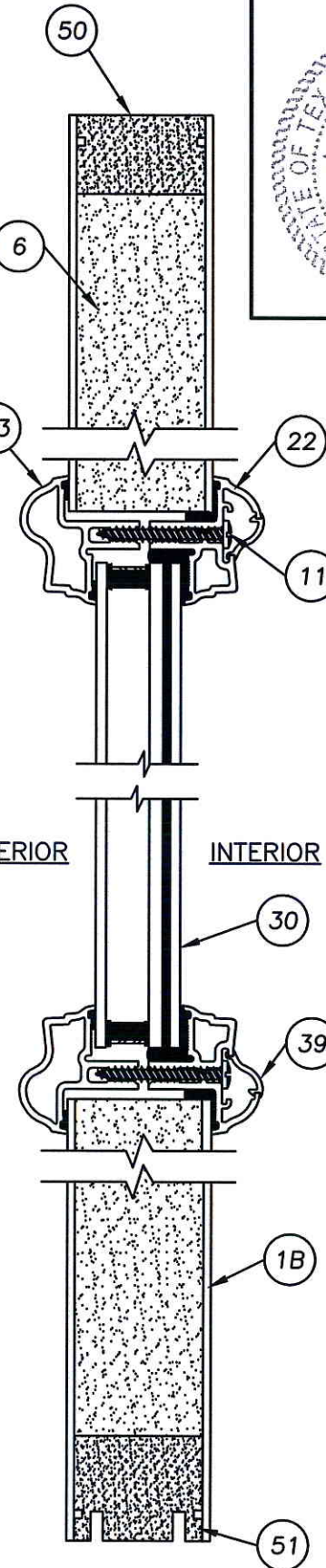
GLAZING DETAIL



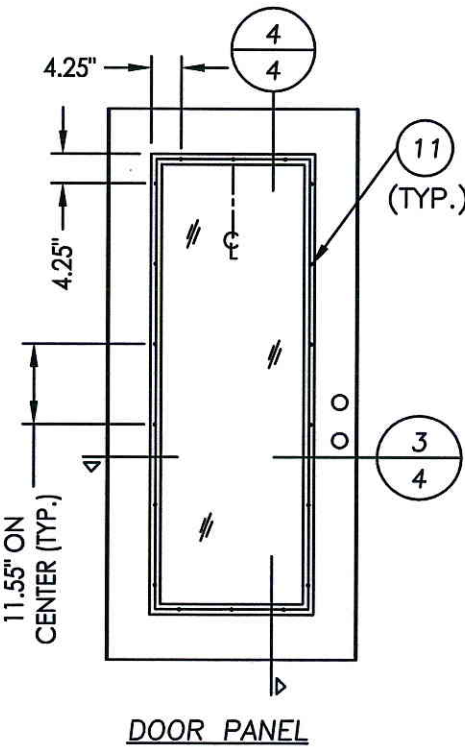
3 HORIZONTAL CROSS SECTION  
4 DOOR PANEL



2 VERTICAL CROSS SECTION  
4 SIDELITE PANEL



4 VERTICAL CROSS SECTION  
4 DOOR PANEL



Documents Prepared By: Lyndon F. Schmidt, P.E.  
TEXAS P.E. #104123

RW BUILDING CONSULTANTS, INC.  
P.O. Box 230 Valrico FL 33595  
Phone No.: 813.659.9197

TEXAS BOARD OF PROFESSIONAL ENGINEERS  
CERTIFICATE OF REGISTRATION # F-11852

PRODUCT: THERMA-TRU DOOR W/  
GLAZED FIBERGLASS "IMPACT"  
SIDELITE IN/OUTSWING  
PART OR ASSEMBLY:  
"FIBER CLASSIC"  
DOOR/SIDELITE PANEL DETAILS

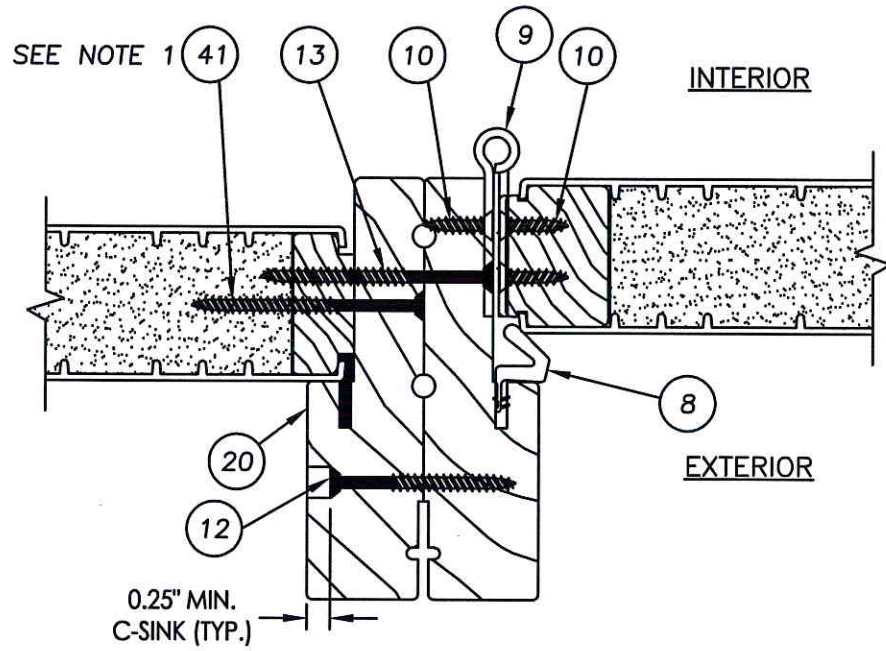
NO.	DATE	BY	REVISIONS

DATE: 7/17/12  
SCALE: N.T.S.  
DWG. BY: JK  
CHK. BY: LFS  
DRAWING NO.: TX-4194  
SHEET 4 OF 9

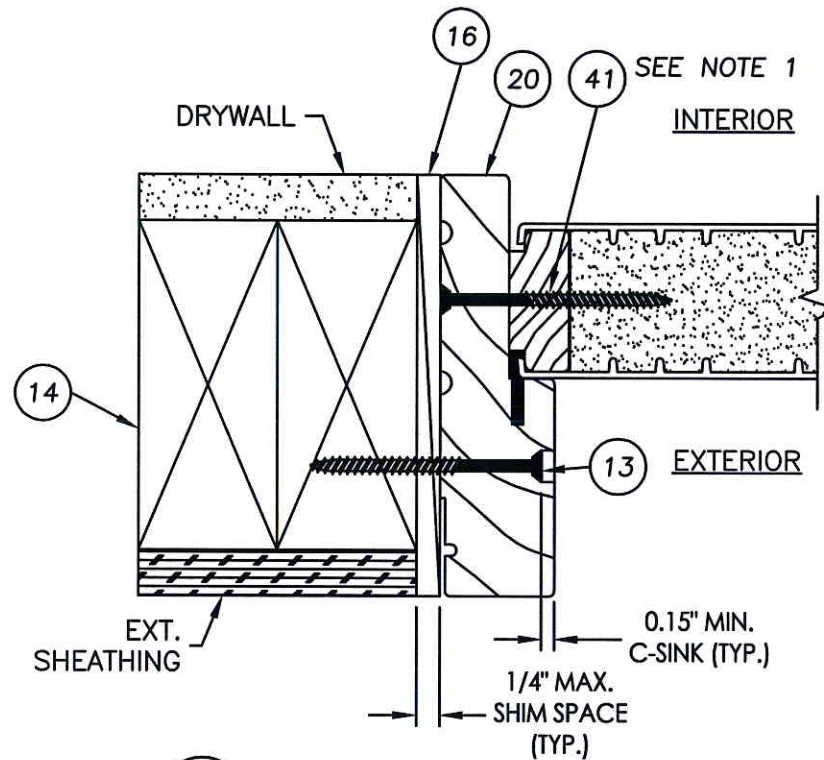
© 2012 R.W. BUILDING CONSULTANTS INC.



R:\A - Projects\Project Folders\Proj 1101 - 1200\pf1105\p. RWBC Drawings\TX-2012\TX-4190-94.dwg, 5.1

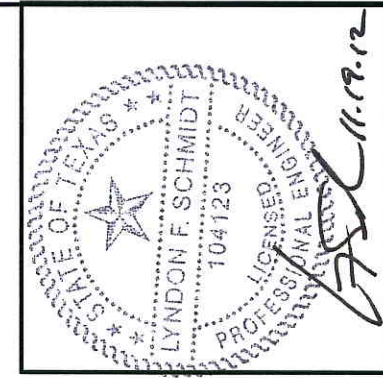


**2** HORIZONTAL CROSS SECTION  
**5** INSWING SHOWN (OUTSWING ALSO APPROVED)  
 ("Smooth Star Series" shown)



**1** HORIZONTAL CROSS SECTION  
**5** INSWING SHOWN (OUTSWING ALSO APPROVED)  
 ("Smooth Star Series" shown)

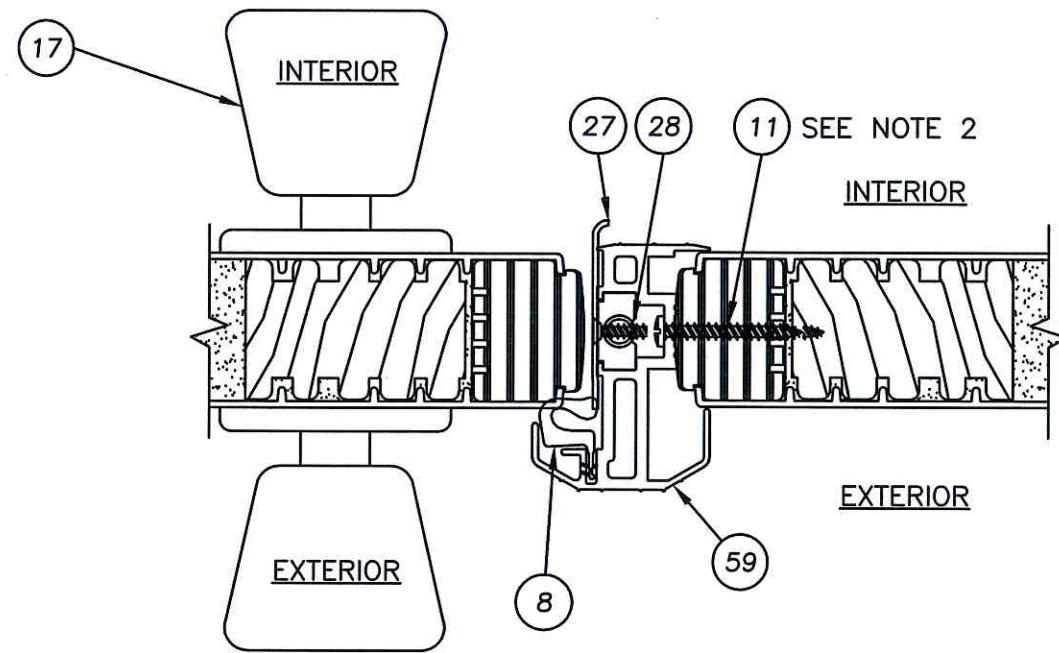
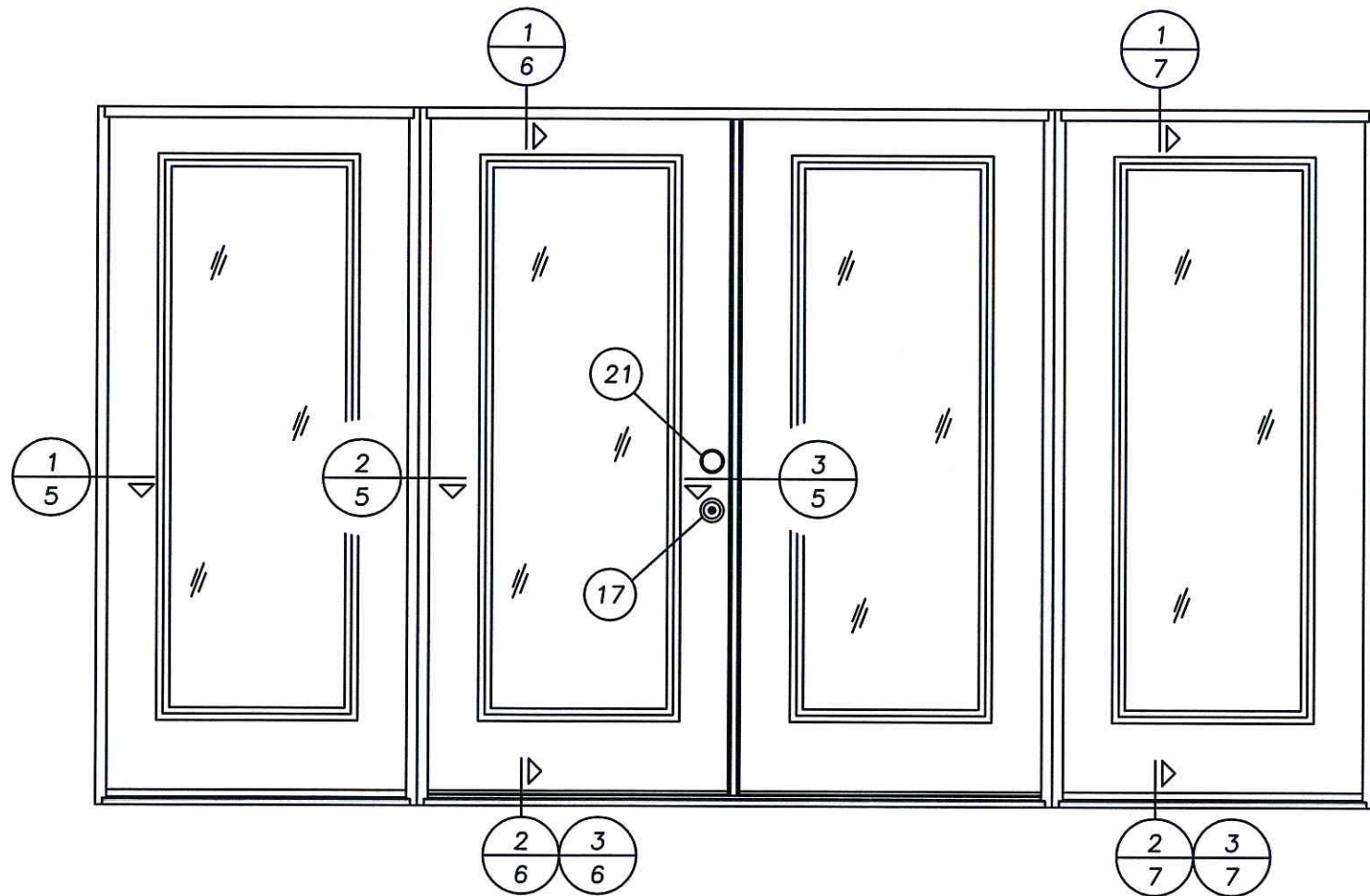
- NOTES:
1. SIDELITE ASSEMBLY FASTENERS LOCATED 6" FROM ENDS PLUS 4 MORE EQUALLY SPACED (6 TOTAL).
  2. ASTRAGAL RETAINING SCREWS LOCATED @ 3/4", 2", 3-1/4", 4-1/2", 18-7/8", 41-7/8", 60-7/8", 74-3/4", 76", 77-1/4" & 78-1/2" FROM TOP OF ASTRAGAL (11 TOTAL).



Documents Prepared By: Lyndon F. Schmidt, P.E.  
 TEXAS P.E. #104123

**RW** BUILDING CONSULTANTS, INC.  
 P.O. Box 230 Vairico FL 33595  
 Phone No.: 813.659.9197

TEXAS BOARD OF PROFESSIONAL ENGINEERS  
 CERTIFICATE OF REGISTRATION # F-11852



**3** HORIZONTAL CROSS SECTION  
**5** INSWING SHOWN (OUTSWING ALSO APPROVED)  
 ("Smooth Star Series" shown)

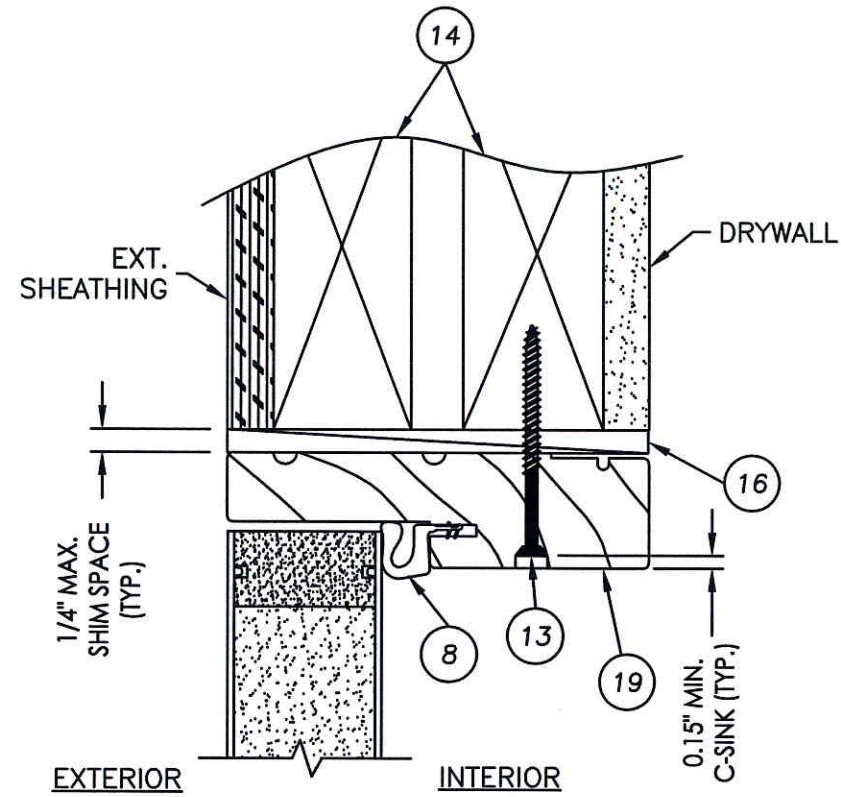
PRODUCT: THERMA-TRU  
 GLAZED FIBERGLASS DBL DOOR W/  
 SIDELITES IN/OUTSWING "IMPACT"  
 PART OR ASSEMBLY: HORIZONTAL  
 CROSS SECTIONS

NO.	DATE	BY

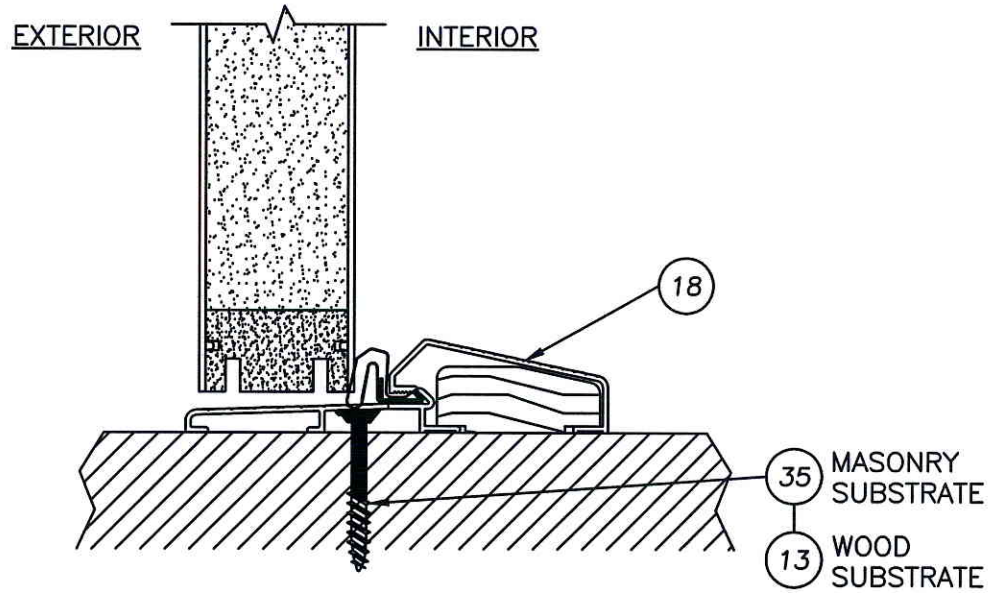
DATE: 7/17/12  
 SCALE: N.T.S.  
 DWG. BY: JK  
 CHK. BY: LFS  
 DRAWING NO.: TX-4194  
 SHEET 5 OF 9



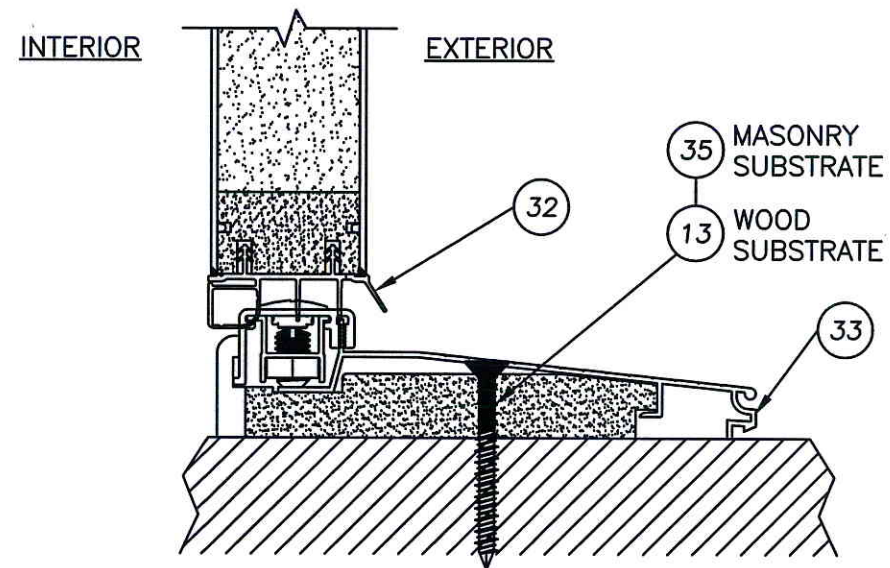
R:\A - Projects\Project Folders\Proj 1101 - 1200\pf1105\101.D. RWBC Drawings\TX-2012\TX-4190-94.dwg, 6.1



1 VERTICAL CROSS SECTION  
6 OUTSWING SHOWN (INSWING ALSO APPROVED)  
("SMOOTH STAR SERIES" SHOWN)



2 VERTICAL CROSS SECTION  
6 OUTSWING CONFIGURATION  
("SMOOTH STAR SERIES" SHOWN)



3 VERTICAL CROSS SECTION  
6 INSWING CONFIGURATION  
("SMOOTH STAR SERIES" SHOWN)



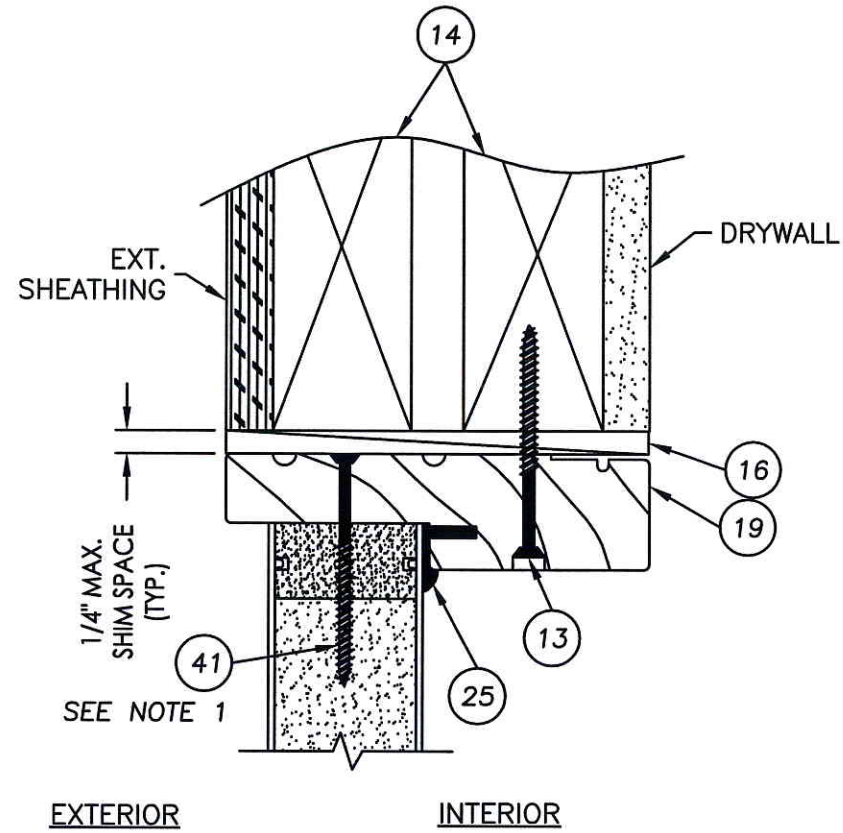
Documents Prepared By: Lyndon F. Schmidt, P.E.  
TEXAS P.E. #104123  
**RW** BUILDING CONSULTANTS, INC.  
P.O. Box 230 Valrico FL 33595  
Phone No.: 813.659.9197  
TEXAS BOARD OF PROFESSIONAL ENGINEERS  
CERTIFICATE OF REGISTRATION # F-11852

PRODUCT: THERMA-TRU DOOR W/  
GLAZED FIBERGLASS DBL SIDELITES IN/OUTSWING "IMPACT"  
PART OR ASSEMBLY: VERTICAL CROSS SECTIONS

NO.	DATE	BY	REVISIONS

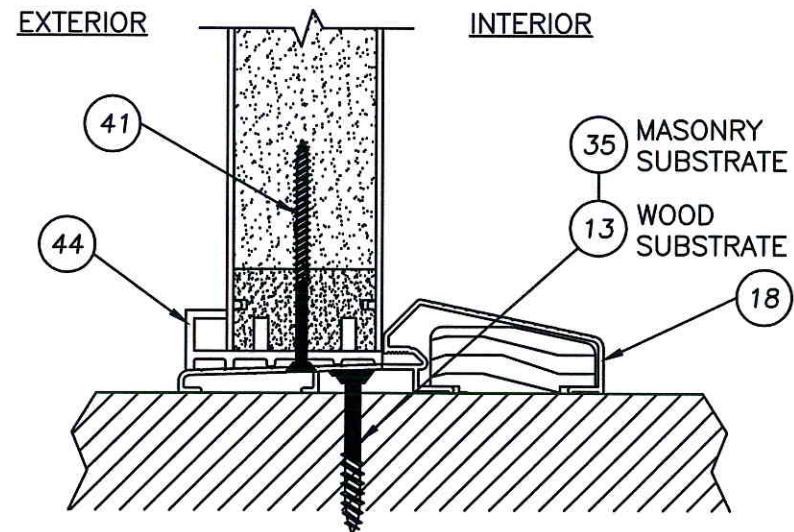
DATE: 7/17/12  
SCALE: N.T.S.  
DWG. BY: JK  
CHK. BY: LFS  
DRAWING NO.: TX-4194  
SHEET 6 OF 9



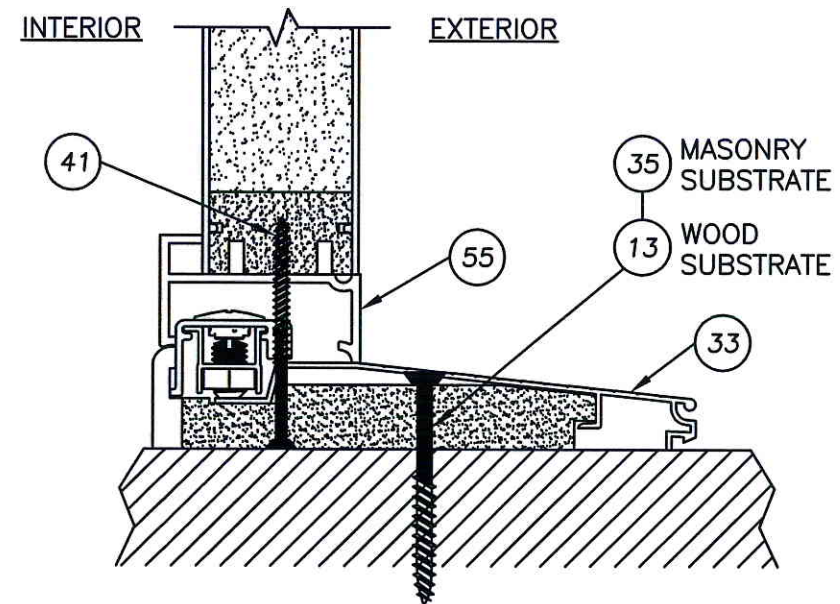


NOTE:  
1. SIDELITE ASSEMBLY FASTENERS LOCATED 6" FROM ENDS PLUS 1 AT CENTERLINE (3 TOTAL).

1 VERTICAL CROSS SECTION  
7 OUTSWING SHOWN (INSWING ALSO APPROVED) ("SMOOTH STAR SERIES" SHOWN)



2 VERTICAL CROSS SECTION  
7 OUTSWING CONFIGURATION ("SMOOTH STAR SERIES" SHOWN)



3 VERTICAL CROSS SECTION  
7 INSWING CONFIGURATION ("SMOOTH STAR SERIES" SHOWN)



Documents Prepared By: Lyndon F. Schmidt, P.E.  
TEXAS P.E. #104123  
RW BUILDING CONSULTANTS, INC.  
P.O. Box 230 Valrico FL 33595  
Phone No.: 813.659.9197  
TEXAS BOARD OF PROFESSIONAL ENGINEERS  
CERTIFICATE OF REGISTRATION # F-11852

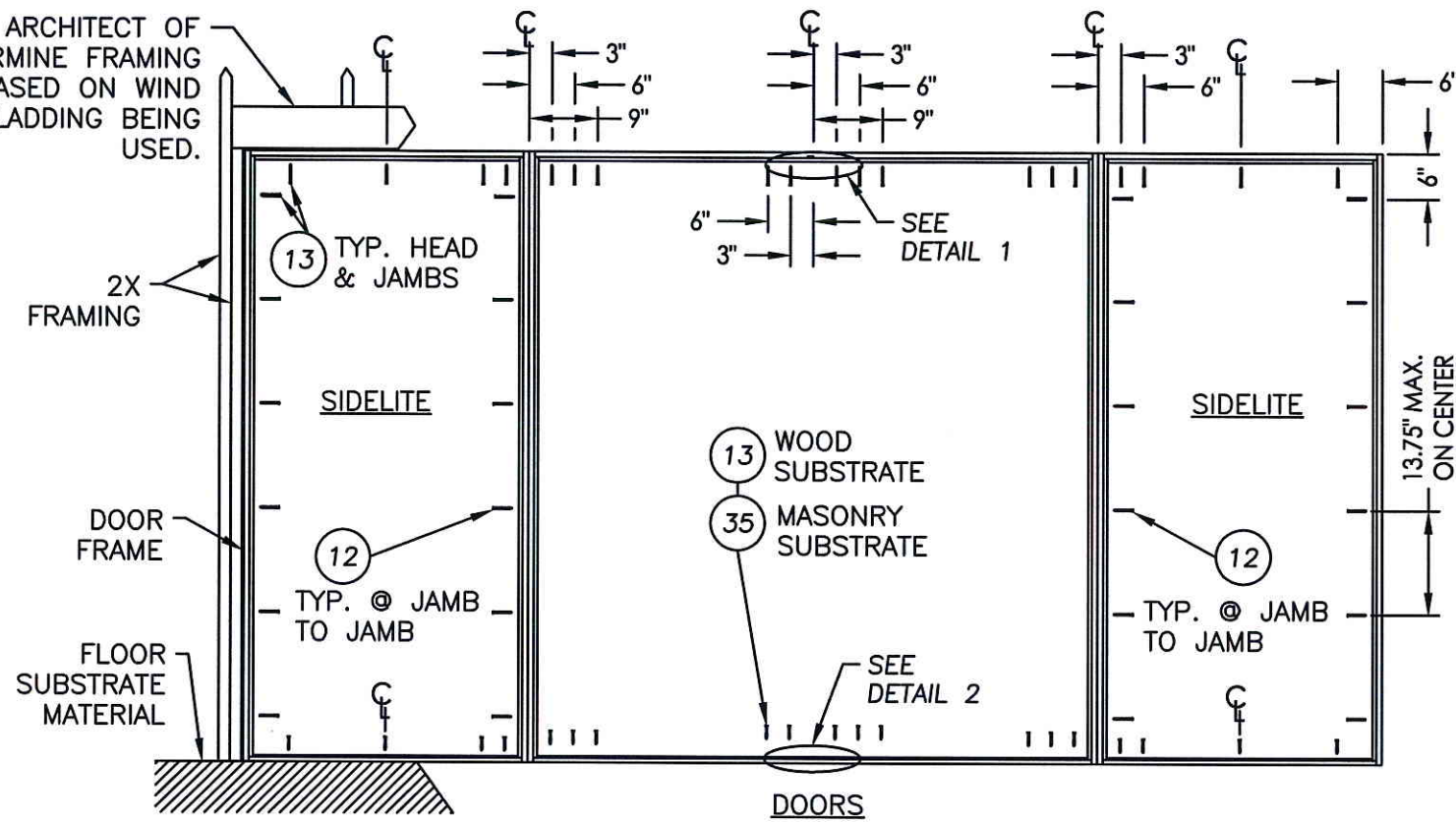
PRODUCT: THERMA-TRU GLAZED FIBERGLASS DBL DOOR W/ SIDELITES IN/OUTSWING "IMPACT"  
PART OR ASSEMBLY: VERTICAL CROSS SECTIONS

NO.	DATE	BY	REVISIONS

DATE: 7/17/12  
SCALE: N.T.S.  
DWG. BY: JK  
CHK. BY: LFS  
DRAWING NO.: TX-4194  
SHEET 7 OF 9

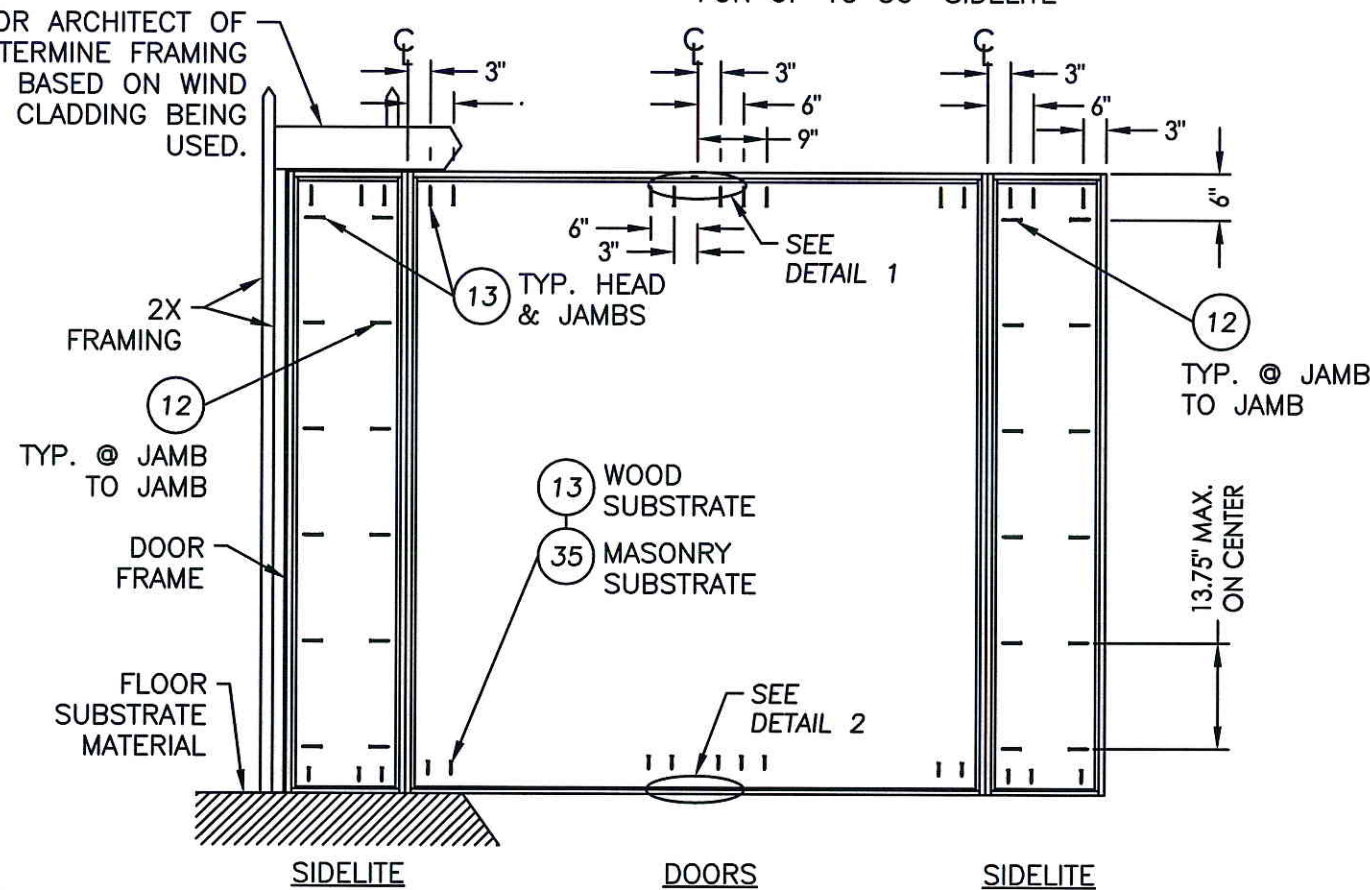


THE ENGINEER OR ARCHITECT OF RECORD TO DETERMINE FRAMING REQUIREMENTS BASED ON WIND LOADS AND THE CLADDING BEING USED.

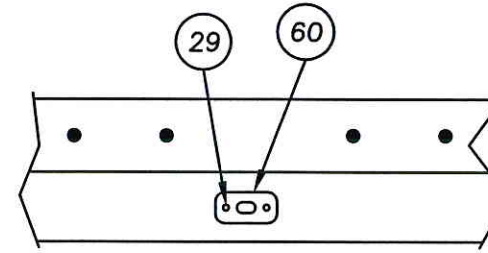


FRAME ANCHORING FOR UP TO 36" SIDELITE

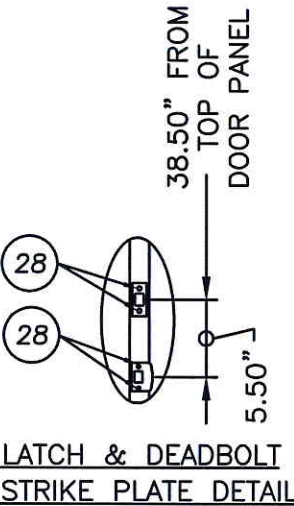
THE ENGINEER OR ARCHITECT OF RECORD TO DETERMINE FRAMING REQUIREMENTS BASED ON WIND LOADS AND THE CLADDING BEING USED.



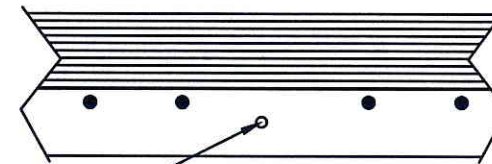
FRAME ANCHORING FOR UP TO 14" SIDELITE



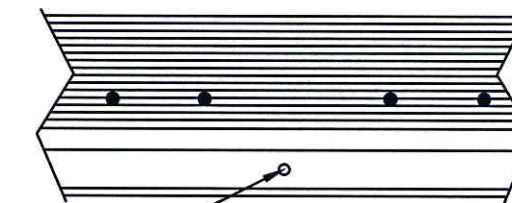
DETAIL 1



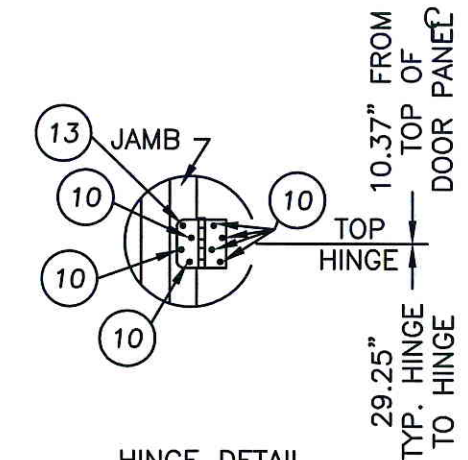
LATCH & DEADBOLT STRIKE PLATE DETAIL



ASTAGAL BOLT HOLE (3" THROW) DETAIL 2 OUTSWING



ASTAGAL BOLT HOLE (3" THROW) DETAIL 2 INSWING

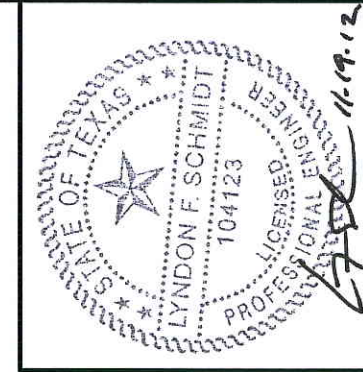


HINGE DETAIL (3) HINGES TOTAL

**CONCRETE ANCHOR NOTES:**

- Concrete anchor locations at the corners may be adjusted to maintain the min. edge distance to mortar joints.
- Concrete anchor locations noted as "MAX. ON CENTER" must be adjusted to maintain the min. edge distance to mortar joints, additional concrete anchors may be required to ensure the "MAX. ON CENTER" dimension are not exceeded.
- Concrete anchor table:

ANCHOR TYPE	ANCHOR SIZE	MIN. EMBEDMENT	MIN. CLEARANCE TO MASONRY EDGE	MIN. CLEARANCE TO ADJACENT ANCHOR
ITW TAPCON®	1/4"	1-3/4"	2-1/2"	3"
ELCO ULTRACON®	1/4"	1-3/4"	1"	3"



Documents Prepared By: Lyndon F. Schmidt, P.E. TEXAS P.E. #104123

RW BUILDING CONSULTANTS, INC. P.O. Box 230 Valrico FL 33595 Phone No.: 813.659.9197

TEXAS BOARD OF PROFESSIONAL ENGINEERS CERTIFICATE OF REGISTRATION # F-11852

PRODUCT: THERMA-TRU DOOR W/ GLAZED FIBERGLASS DBL SIDELITES IN/OUTSWING "IMPACT" PART OR ASSEMBLY: FRAME ANCHORING

NO.	DATE	REVISIONS	BY

DATE: 7/17/12  
SCALE: N.T.S.  
DWG. BY: JK  
CHK. BY: LFS  
DRAWING NO.: TX-4194  
SHEET 8 OF 9



