

# THERMATRU®

118 INDUSTRIAL DR., EDGERTON, OH 43517

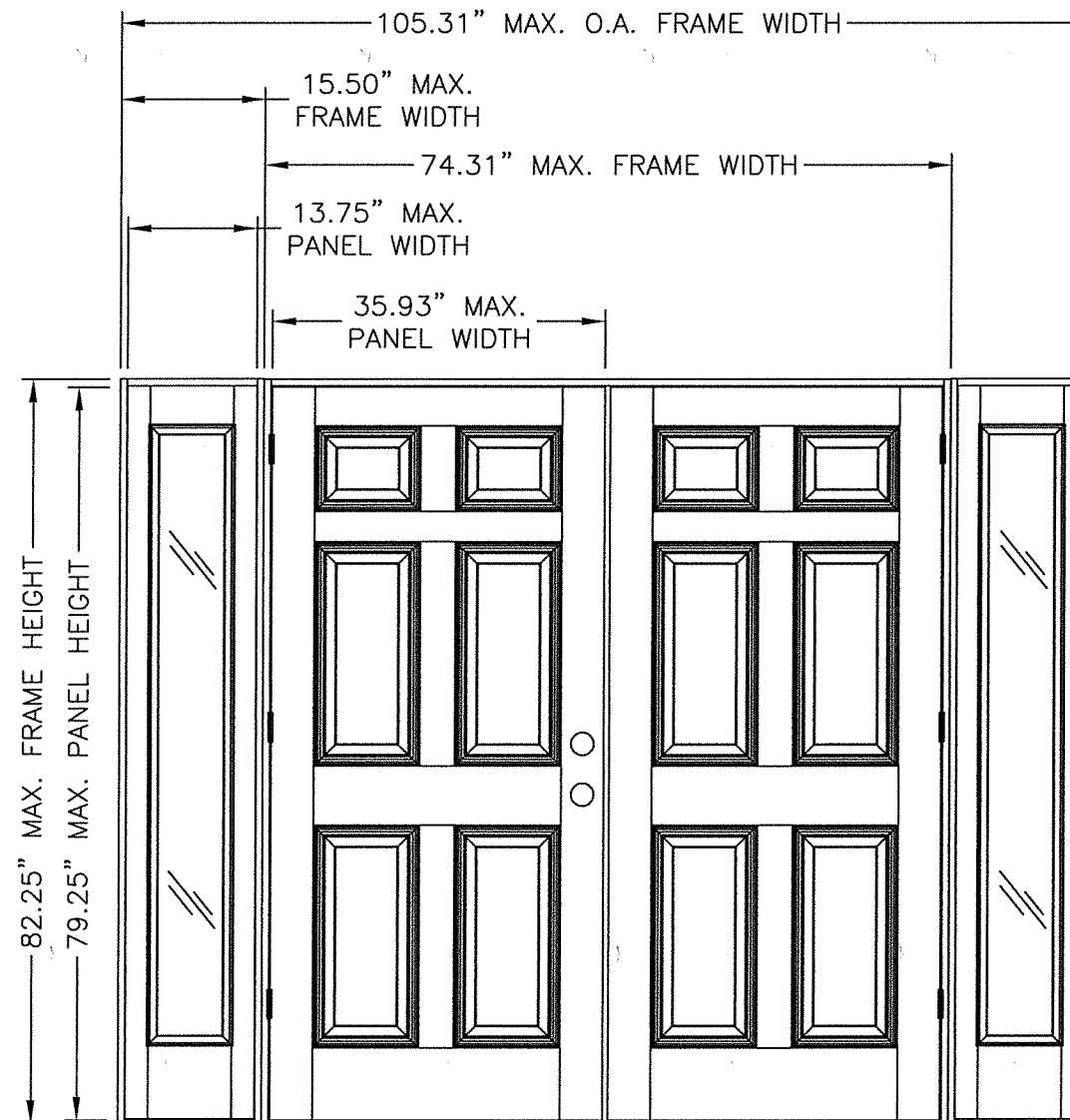
## SMOOTH-STAR, FIBER-CLASSIC, CLASSIC-CRAFT & CLASSIC-CRAFT RUSTIC DOUBLE "IMPACT" DOOR WITH "NON-IMPACT" SIDELITES IN SWING / OUT SWING

### EVALUATED FOR USE IN THE STATE OF TEXAS

The Fiberglass Door system described herein complies with the 2018 International Residential Code (IRC), Sections R301 & R609 and the 2018 International Building Code (IBC), Sections 1404.13, 1609, 1709.5, 2403 and 2404 subject to the following conditions:

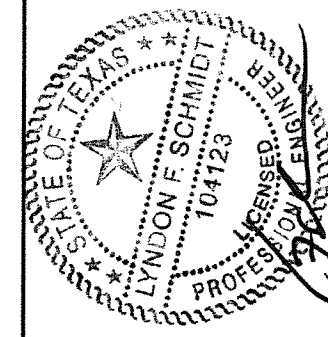
1. Anchors shall be as listed and spaced as shown in the details. Anchor embedment to base material shall be beyond wall dressing or stucco.
2. When used in areas requiring wind-borne debris protection, the opaque door does not require impact protection and meets missile level "D" as defined in ASTM E 1996. The sidelites are required to be protected with an impact resistant covering that complies with Section R301.2.1.2 of the IRC and Section 1609.1.2 of the IBC.
3. Allowable design pressure requirements must be equal to or less than the design pressure rating shown in the design pressure chart, sheet 1 of this drawing.
4. Conditions not covered by this drawing are subject to further engineering analysis.
5. Fiber-Classic and Smooth-Star Door and Sidelite panels require the use of "J" part numbers. These door and sidelite panels must be stained or painted within six months of installation.

TABLE OF CONTENTS	
SHEET #	DESCRIPTION
1	TYPICAL ELEVATION, DESIGN PRESSURES & GENERAL NOTES
2	DOOR PANEL DETAILS (SMOOTH STAR)
3	DOOR PANEL DETAILS (CLASSIC CRAFT)
4	DOOR PANEL DETAILS (CLASSIC CRAFT RUSTIC)
5	DOOR PANEL DETAILS (FIBER CLASSIC)
6	SIDELITE PANEL DETAILS
7	HORIZONTAL CROSS SECTIONS
8	VERTICAL CROSS SECTIONS
9	VERTICAL CROSS SECTIONS
10	FRAME ANCHORING
11	ASTRAGAL DETAILS, ANCHORING DETAILS & GLAZING DETAILS
12	COMPONENTS
13	BILL OF MATERIALS



"SMOOTH STAR", "CLASSIC CRAFT", "CLASSIC CRAFT RUSTIC" & "FIBER CLASSIC"

DOOR TYPE	SWING	OVERALL FRAME DIMENSION	OVERALL SIDELITE D.L.O. DIMENSION	DESIGN PRESSURE	
				POSITIVE	NEGATIVE
CLASSIC CRAFT	OUTSWING	105.31" X 80.75"	7.09" X 63.09"	+70.0	-70.0
	IN SWING	105.31" X 82.25"		+70.0	-70.0
FIBER CLASSIC	OUTSWING	105.31" X 80.75"		+70.0	-70.0
	IN SWING	105.31" X 82.25"		+70.0	-70.0
SMOOTH STAR	OUTSWING	105.31" X 80.75"		+70.0	-70.0
	IN SWING	105.31" X 82.25"		+70.0	-70.0
CLASSIC CRAFT RUSTIC	OUTSWING	105.31" X 80.75"		+70.0	-70.0
	IN SWING	105.31" X 82.25"		+70.0	-70.0



5.7.20

Documents Prepared By: Lyndon F. Schmidt, P.E.  
TEXAS P.E. #104123

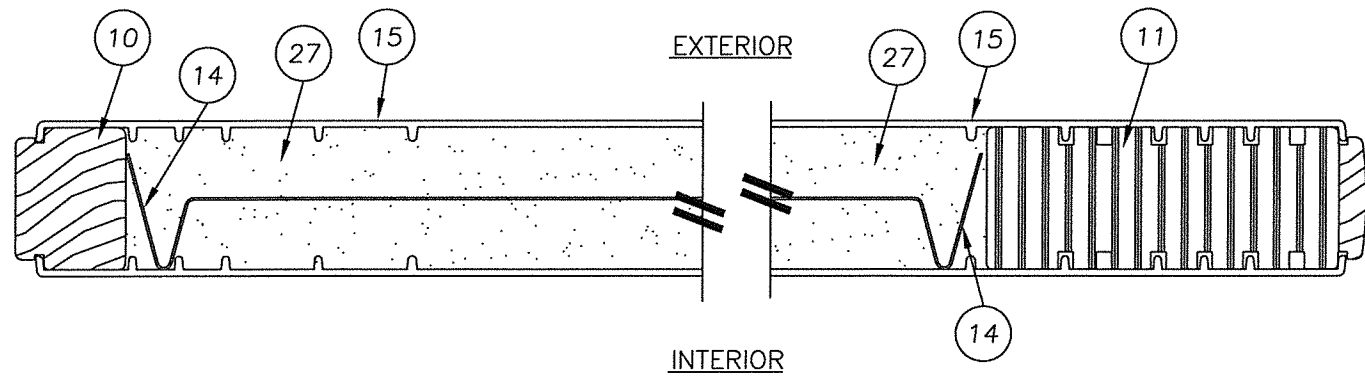
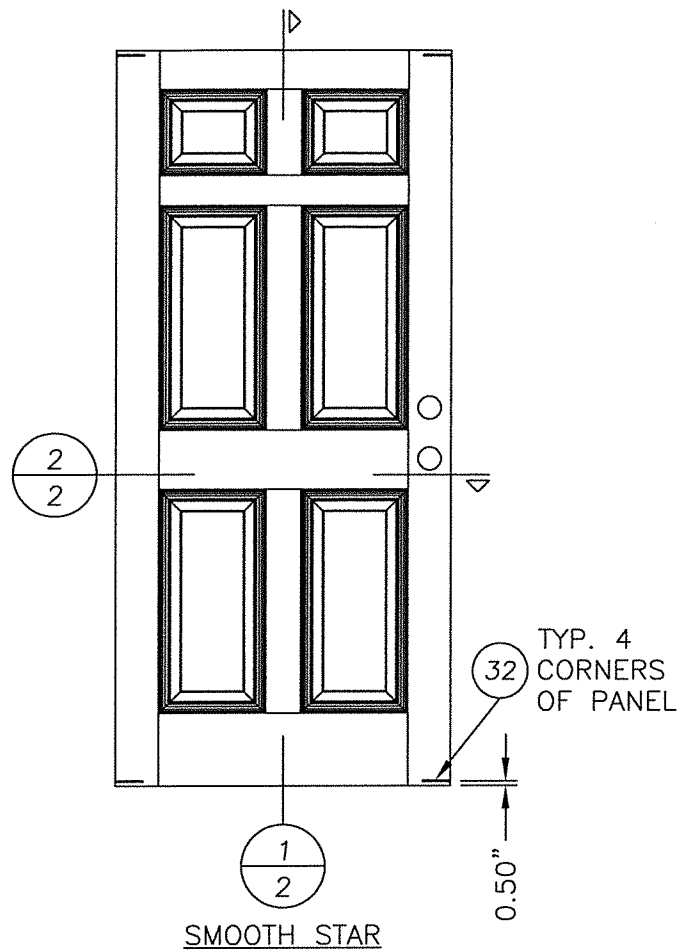
RW BUILDING CONSULTANTS, INC.  
P.O. Box 230 Valrico FL 33595  
Phone No.: 813.659.9197

TEXAS BOARD OF PROFESSIONAL ENGINEERS  
CERTIFICATE OF REGISTRATION # F-11852

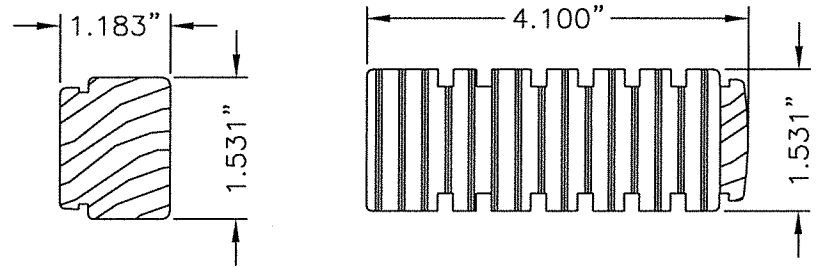
PRODUCT: DOUBLE OPAQUE  
FIBERGLASS DOOR W/ SIDELITES  
"IMPACT" IN SWING / OUTSWING  
PART OR ASSEMBLY:  
TYPICAL ELEVATION, DESIGN  
PRESSURES & GENERAL NOTES

NO.	DATE	REVISIONS
2	5/06/20	UPDATE TO 2018 IBC/IRC CODE
1	7/16/15	ADDED GENERAL NOTE 5.

DATE: 07/17/12  
SCALE: N.T.S.  
DWG. BY: JK  
CHK. BY: LFS  
DRAWING NO.: TX-4189  
SHEET 1 OF 13

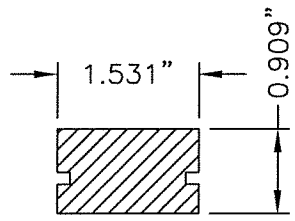
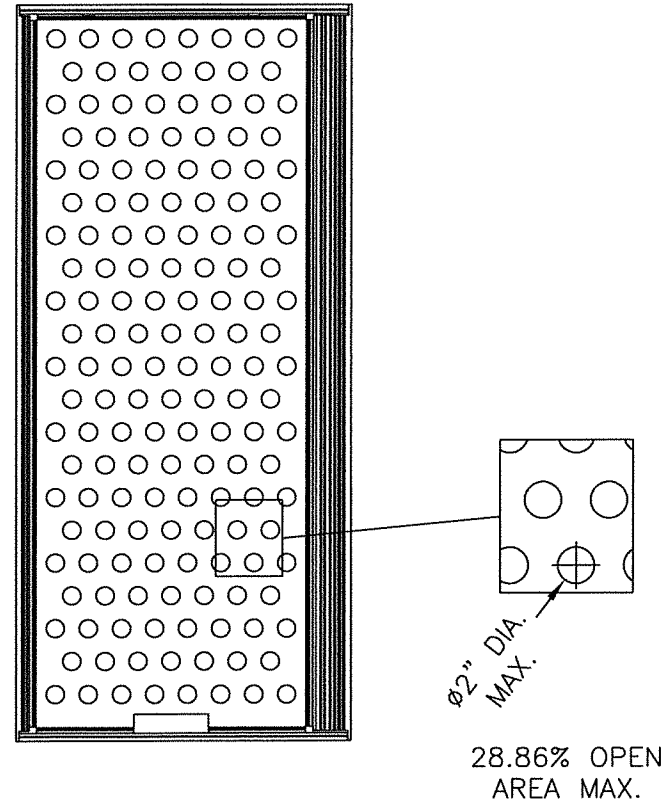


2 HORIZONTAL CROSS SECTION  
2 SMOOTH STAR

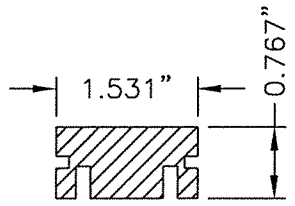


10 HINGE STILE  
SMOOTH STAR

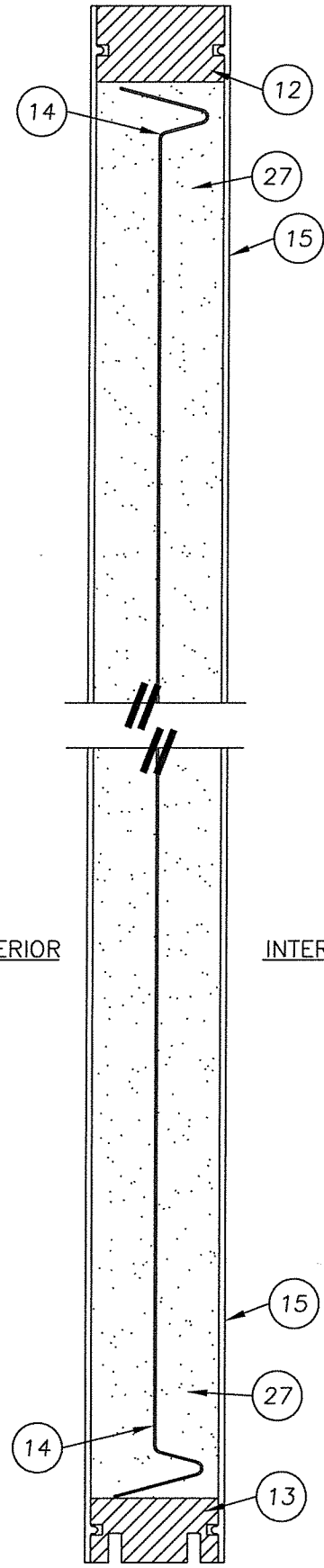
11 LOCK STILE  
SMOOTH STAR



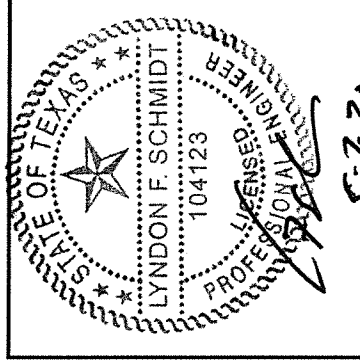
12 TOP RAIL  
SMOOTH STAR



13 BOTTOM RAIL  
SMOOTH STAR



1 VERTICAL CROSS SECTION  
2 SMOOTH STAR



Documents Prepared By: Lyndon F. Schmidt, P.E.  
TEXAS P.E. #104123

RW BUILDING CONSULTANTS, INC.  
P.O. Box 230 Valrico FL 33595  
Phone No.: 813.659.9197

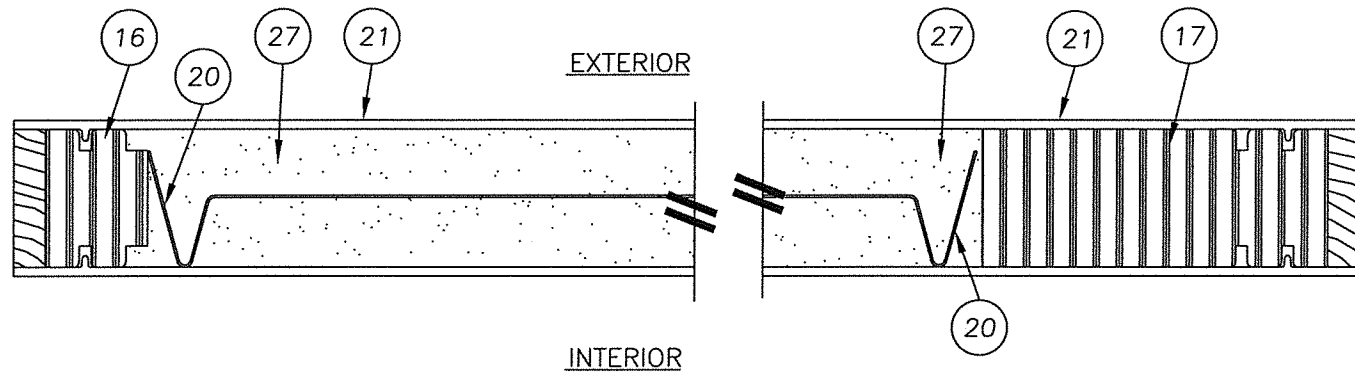
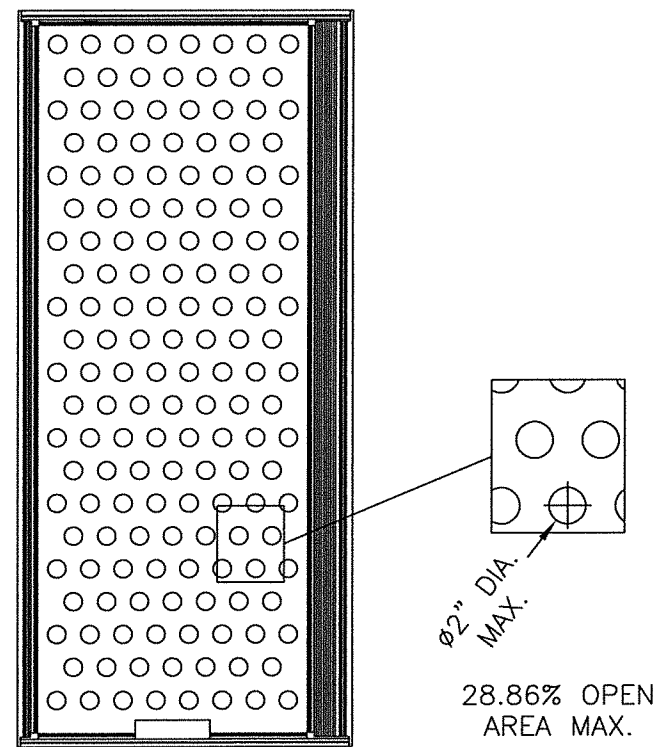
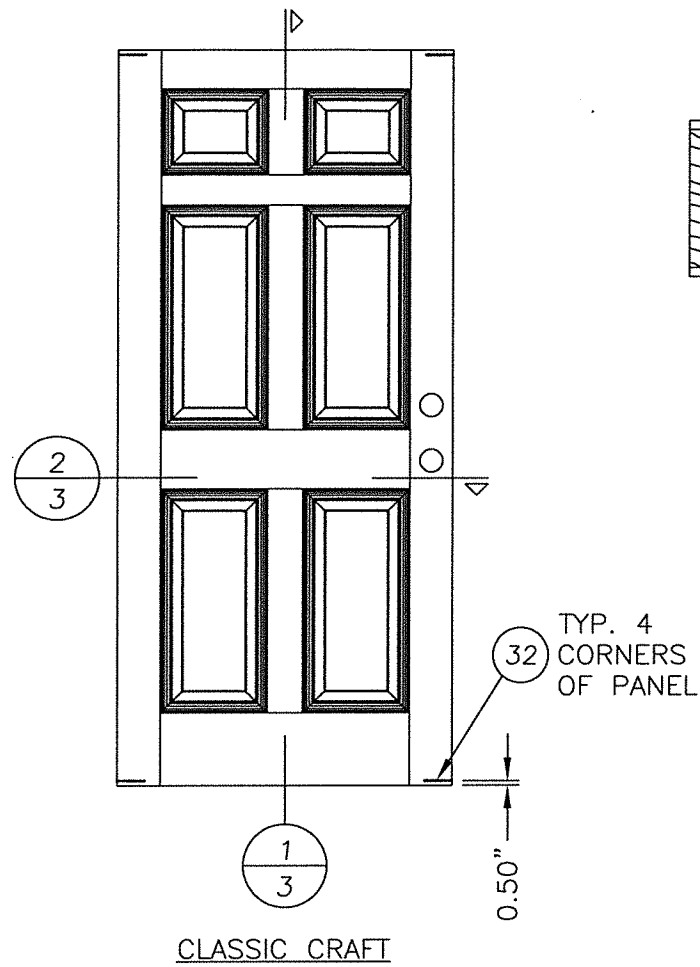
TEXAS BOARD OF PROFESSIONAL ENGINEERS  
CERTIFICATE OF REGISTRATION # F-11852

PRODUCT: DOUBLE OPAQUE  
FIBERGLASS DOOR W/ SIDELITES  
"IMPACT" INSWING / OUTSWING

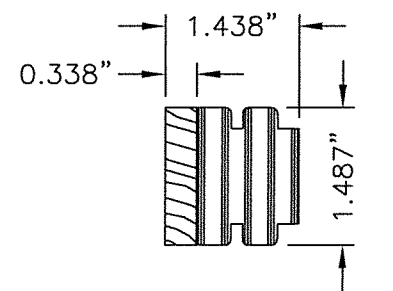
PART OR ASSEMBLY:  
DOOR PANEL DETAILS  
(SMOOTH STAR)

NO.	DATE	REVISIONS
2	5/06/20	UPDATE TO 2018 IBC/IRC CODE
1	7/16/15	ADDED GENERAL NOTE 5.

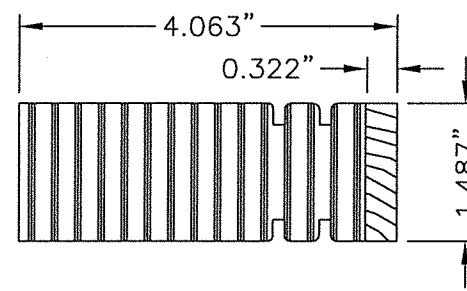
DATE: 07/17/12  
SCALE: N.T.S.  
DWG. BY: JK  
CHK. BY: LFS  
DRAWING NO.: TX-4189  
SHEET 2 OF 13



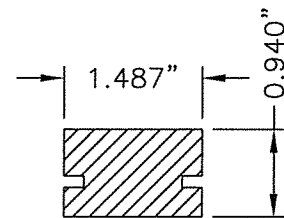
2 HORIZONTAL CROSS SECTION  
3 (CLASSIC CRAFT)



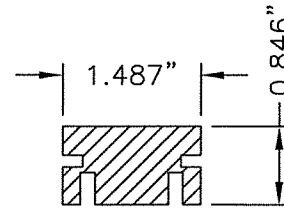
16 HINGE STILE  
CLASSIC CRAFT



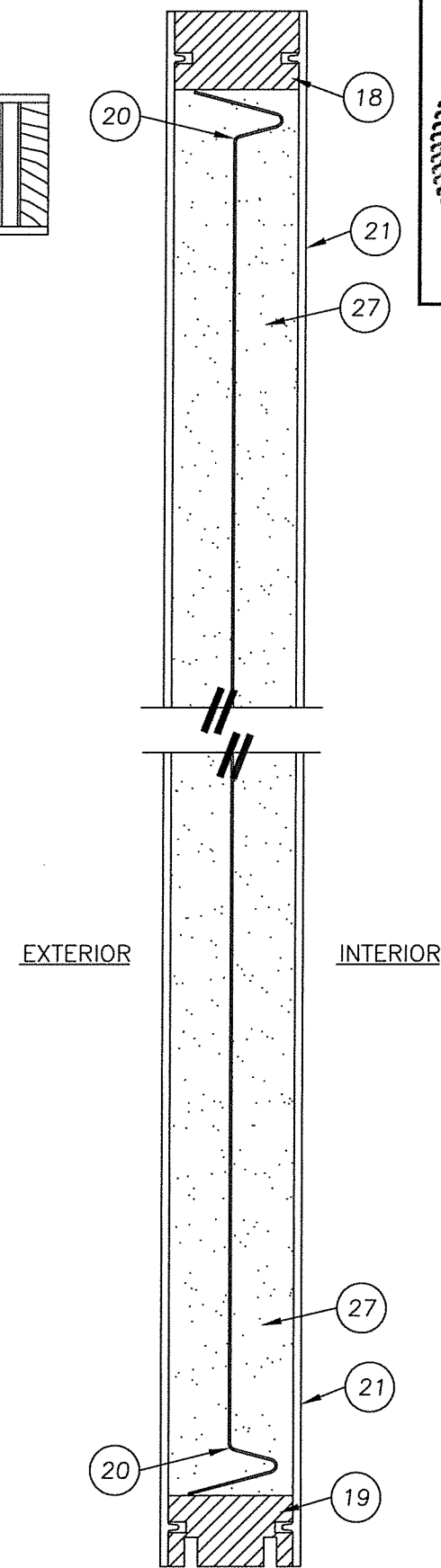
17 LOCK STILE  
CLASSIC CRAFT



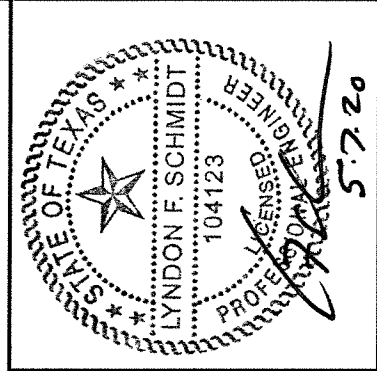
18 TOP RAIL  
CLASSIC CRAFT



19 BOTTOM RAIL  
CLASSIC CRAFT



1 VERTICAL CROSS SECTION  
3 (CLASSIC CRAFT)



Documents Prepared By: Lyndon F. Schmidt, P.E.  
TEXAS P.E. #104123

**RW** BUILDING CONSULTANTS, INC.  
P.O. Box 230 Valrico FL 33595  
Phone No.: 813.659.9197

TEXAS BOARD OF PROFESSIONAL ENGINEERS  
CERTIFICATE OF REGISTRATION # F-11852

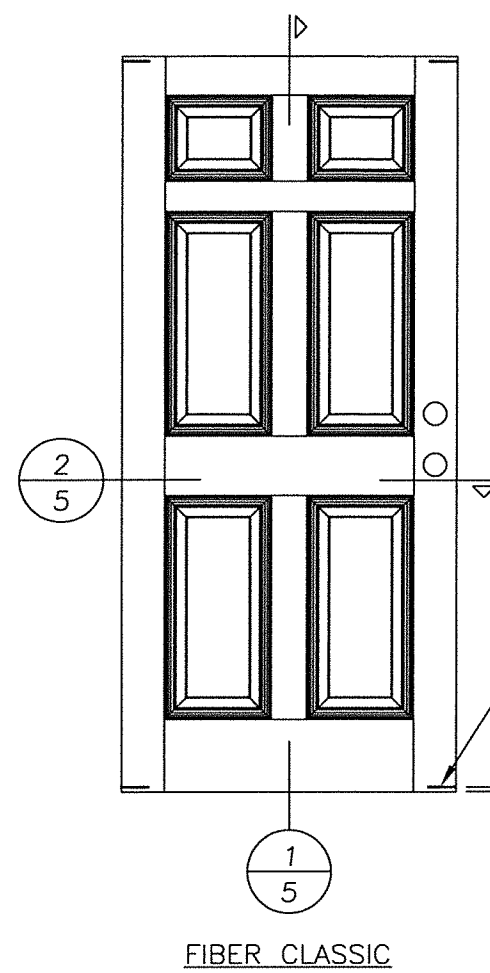
PRODUCT: DOUBLE OPAQUE FIBERGLASS DOOR W/ SIDELITES "IMPACT" INSWING / OUTSWING

PART OR ASSEMBLY: DOOR PANEL DETAILS (CLASSIC CRAFT)

REVISIONS	
NO.	DATE
2	5/08/20
1	7/16/15

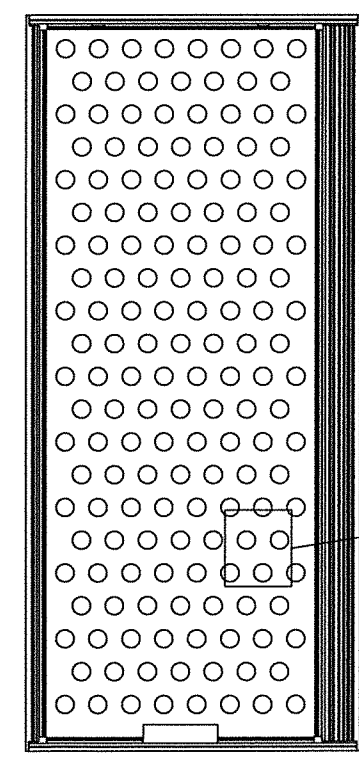
DATE: 7/17/12  
SCALE: N.T.S.  
DWG. BY: JK  
CHK. BY: LFS  
DRAWING NO.: TX-4189  
SHEET 3 OF 13



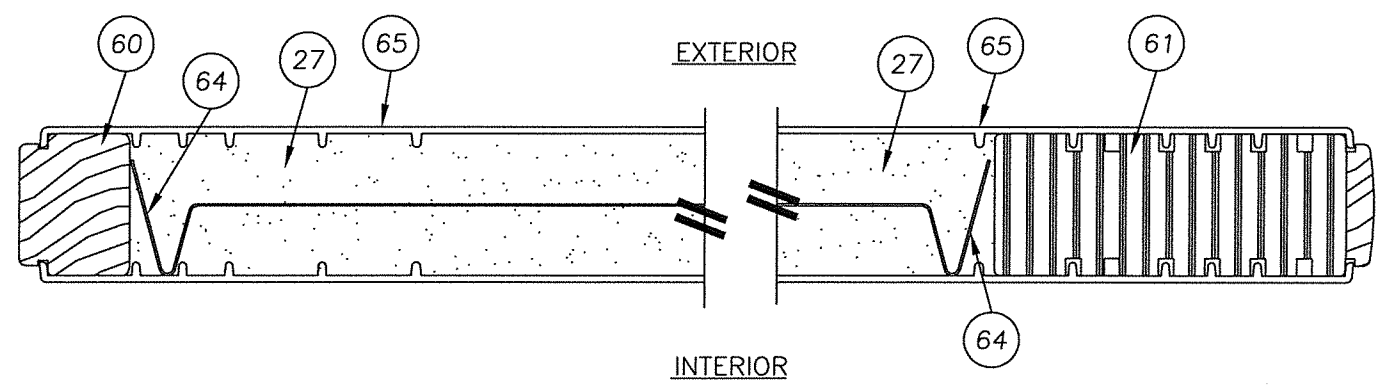


FIBER CLASSIC

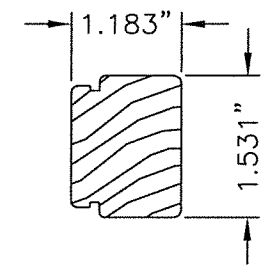
TYP. 4 CORNERS OF PANEL



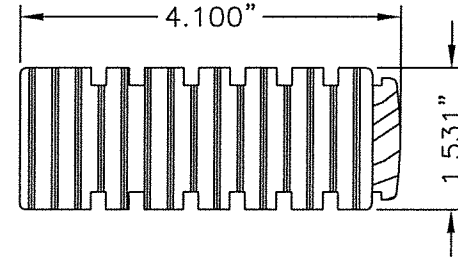
28.86% OPEN AREA MAX.



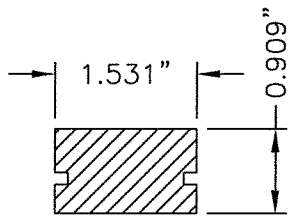
2 HORIZONTAL CROSS SECTION  
5 FIBER CLASSIC



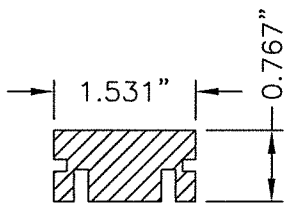
60 HINGE STILE  
FIBER CLASSIC



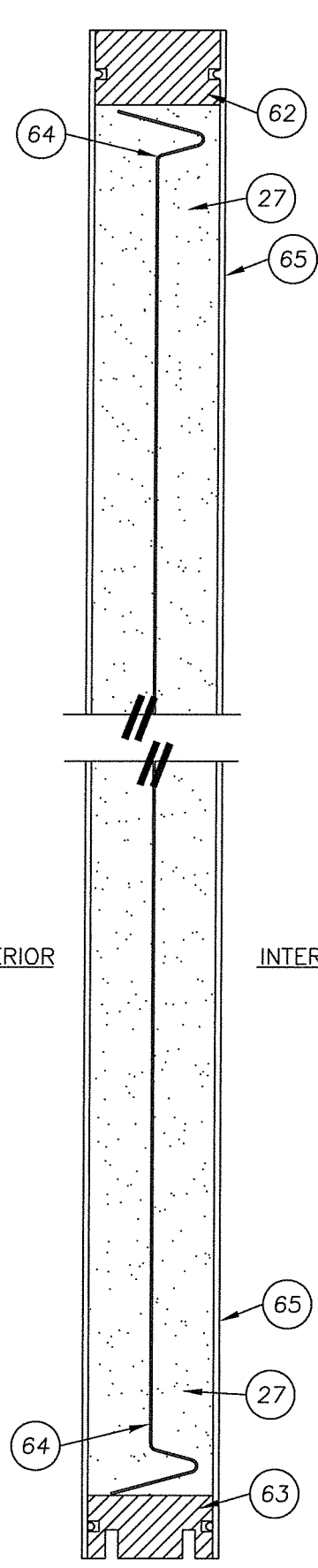
61 LOCK STILE  
FIBER CLASSIC



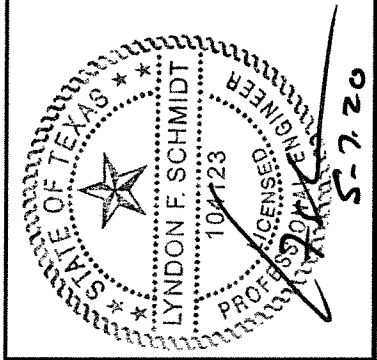
62 TOP RAIL  
FIBER CLASSIC



63 BOTTOM RAIL  
FIBER CLASSIC



1 VERTICAL CROSS SECTION  
5 FIBER CLASSIC



Documents Prepared By: Lyndon F. Schmidt, P.E.  
TEXAS P.E. #104123

**RW** BUILDING CONSULTANTS, INC.  
P.O. Box 230 Valrico FL 33595  
Phone No.: 813.659.9197

TEXAS BOARD OF PROFESSIONAL ENGINEERS  
CERTIFICATE OF REGISTRATION # F-11852

PRODUCT: DOUBLE OPAQUE  
FIBERGLASS DOOR W/SIDELITES  
"IMPACT" INSWING / OUTSWING

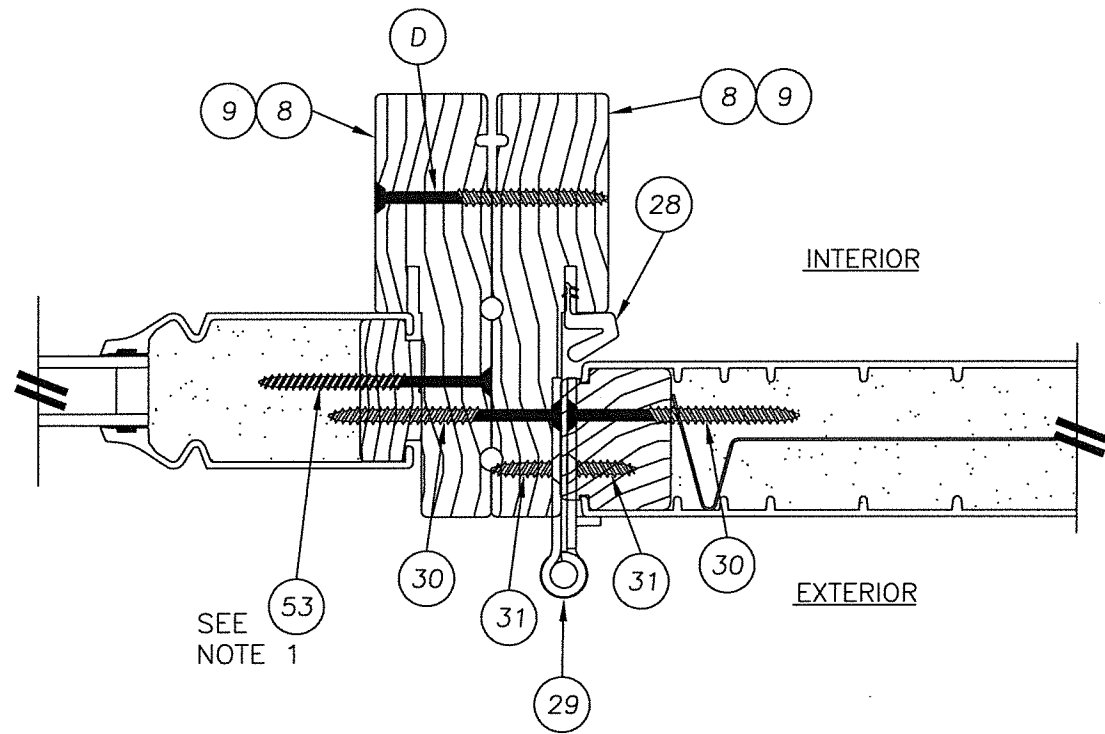
PART OR ASSEMBLY:  
DOOR PANEL DETAILS  
(FIBER CLASSIC)

NO.	DATE	REVISIONS
2	5/06/20	UPDATE TO 2018 IBC/IRC CODE
1	7/16/15	ADDED GENERAL NOTE 5.
LFS		
LFS		
BY		

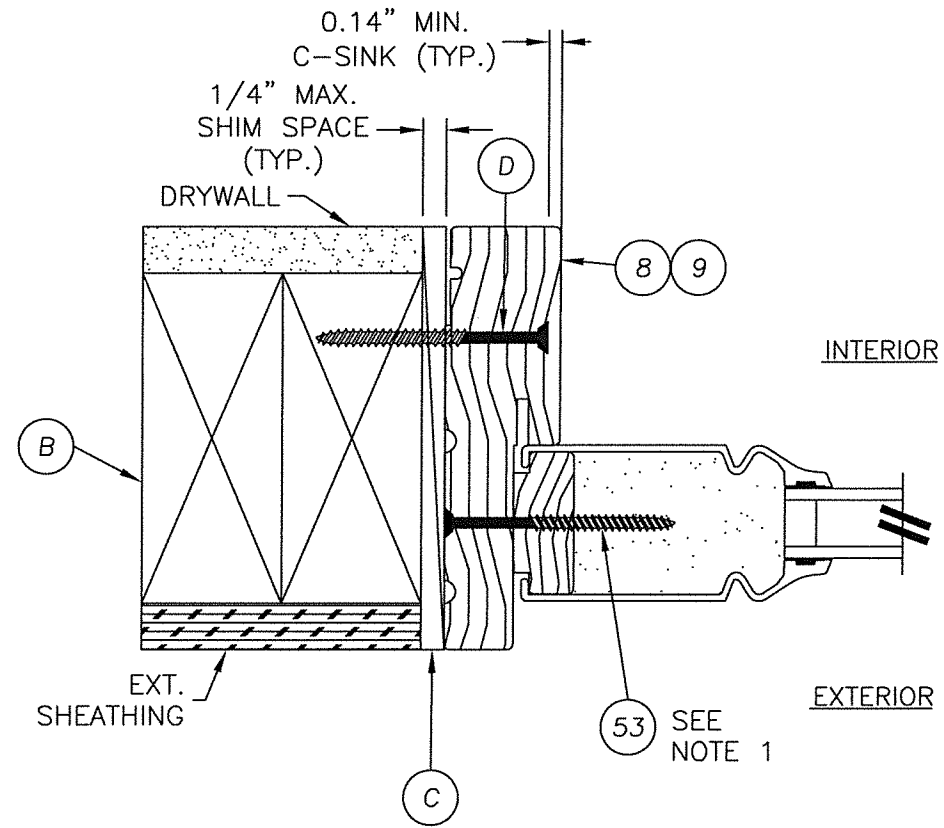
DATE: 07/17/12  
SCALE: N.T.S.  
DWG. BY: JK  
CHK. BY: LFS  
DRAWING NO.: TX-4189  
SHEET 5 OF 13





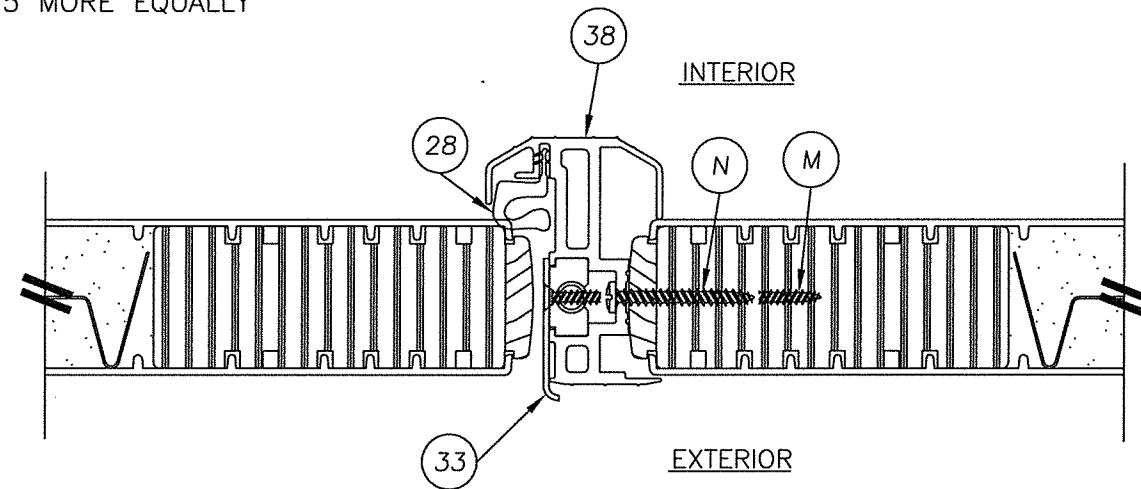
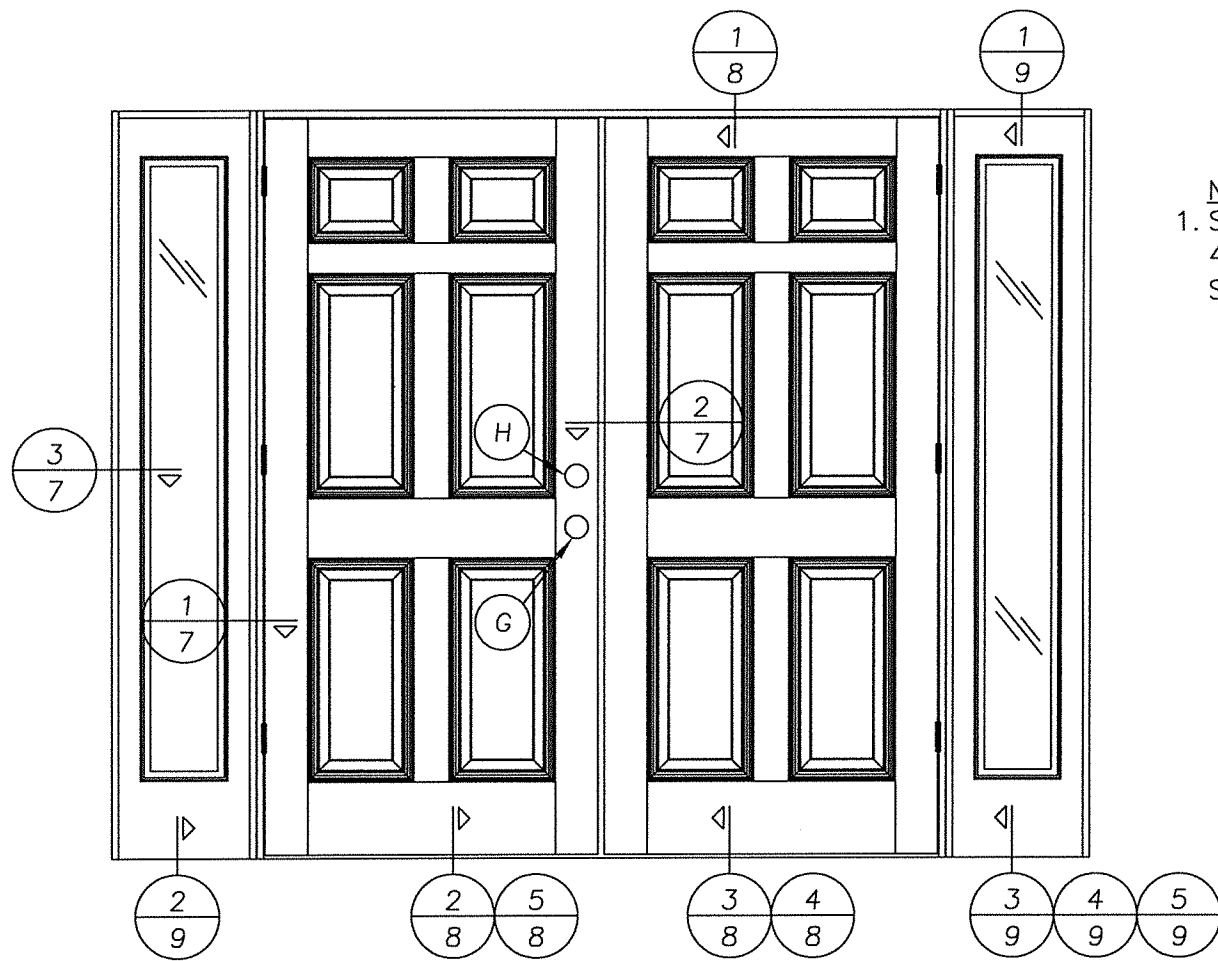


1 HORIZONTAL CROSS SECTION  
 7 OUTSWING SHOWN - INSWING ALSO APPROVED  
 SMOOTH STAR PANEL SHOWN  
 SEE DOOR PANEL DETAILS FOR  
 OPTIONAL PANEL TYPES

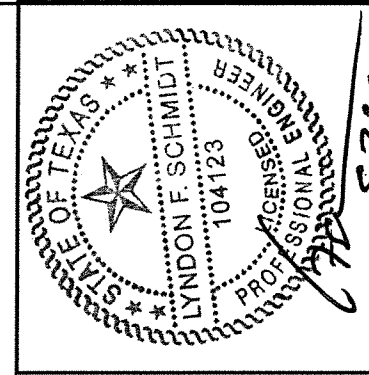


3 HORIZONTAL CROSS SECTION  
 7 OUTSWING SHOWN - INSWING ALSO APPROVED  
 CLASSIC CRAFT PANEL SHOWN  
 SEE SIDELITE PANEL DETAILS FOR  
 OPTIONAL PANEL TYPES

NOTE:  
 1. SIDELITE ASSEMBLY SCREWS LOCATED  
 4" FROM ENDS AND 5 MORE EQUALLY  
 SPACED (7 TOTAL).



2 HORIZONTAL CROSS SECTION  
 7 OUTSWING SHOWN - INSWING ALSO APPROVED  
 SMOOTH STAR PANEL SHOWN  
 SEE DOOR PANEL DETAILS FOR  
 OPTIONAL PANEL TYPES

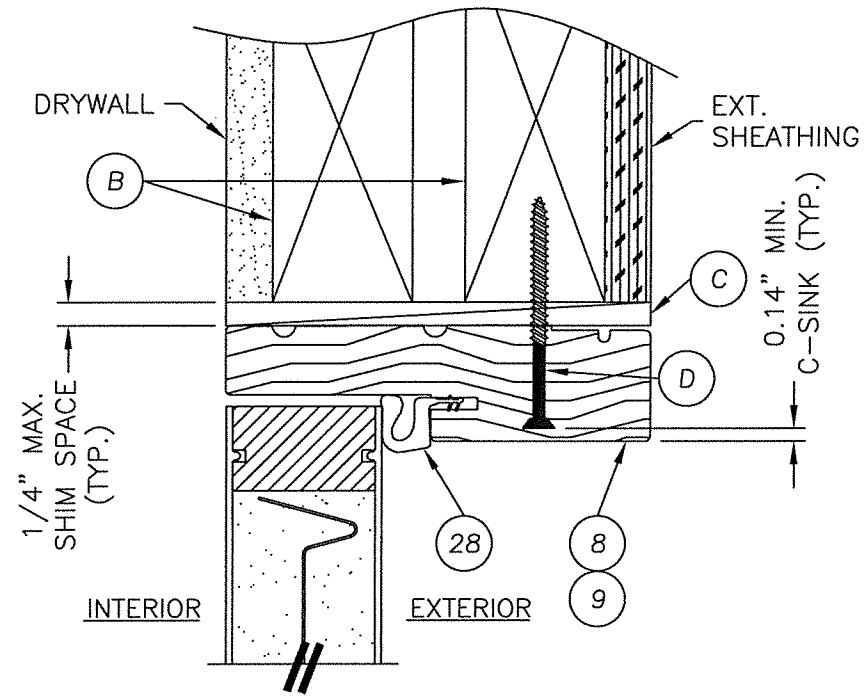


Documents Prepared By: Lyndon F. Schmidt, P.E.  
 TEXAS P.E. #104123

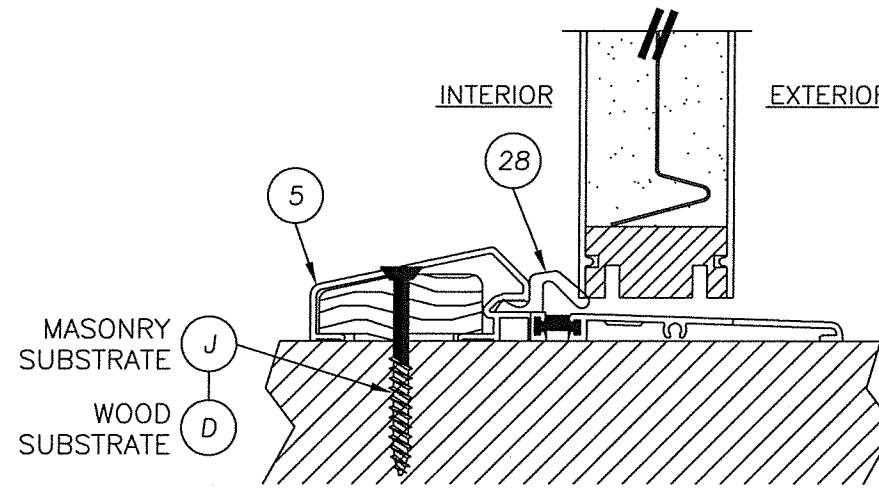
RW BUILDING CONSULTANTS, INC.  
 P.O. Box 230 Valrico FL 33595  
 Phone No.: 813.659.9197  
 TEXAS BOARD OF PROFESSIONAL ENGINEERS  
 CERTIFICATE OF REGISTRATION # F-11852

PRODUCT:		DOUBLE OPAQUE FIBERGLASS DOOR W/SIDELITES "IMPACT" INSWING / OUTSWING	
PART OR ASSEMBLY:		HORIZONTAL CROSS SECTIONS	
NO.	DATE	REVISIONS	BY
2	5/06/20	UPDATE TO 2018 IBC/IRC CODE	LFS
1	7/16/15	ADDED GENERAL NOTE 5.	LFS
DATE: 07/17/12			
SCALE: N.T.S.			
DWG. BY: JK			
CHK. BY: LFS			
DRAWING NO.: TX-4189			
SHEET 7 OF 13			

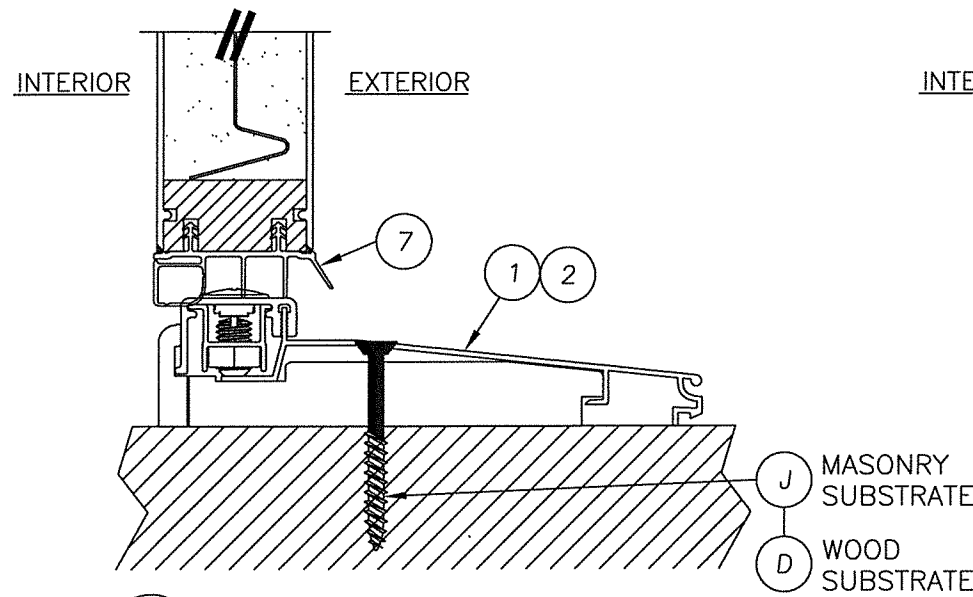
R:\Clients\Therma Tru PERMANENT\B - Texas Dept of Ins\TDI - DR 276 - 68 Opaque FG Imp IS - OS Sgls Dbls w-wo Non-Imp SL\C - Drawings\Current\TX-4184-89.dwg, FOX08



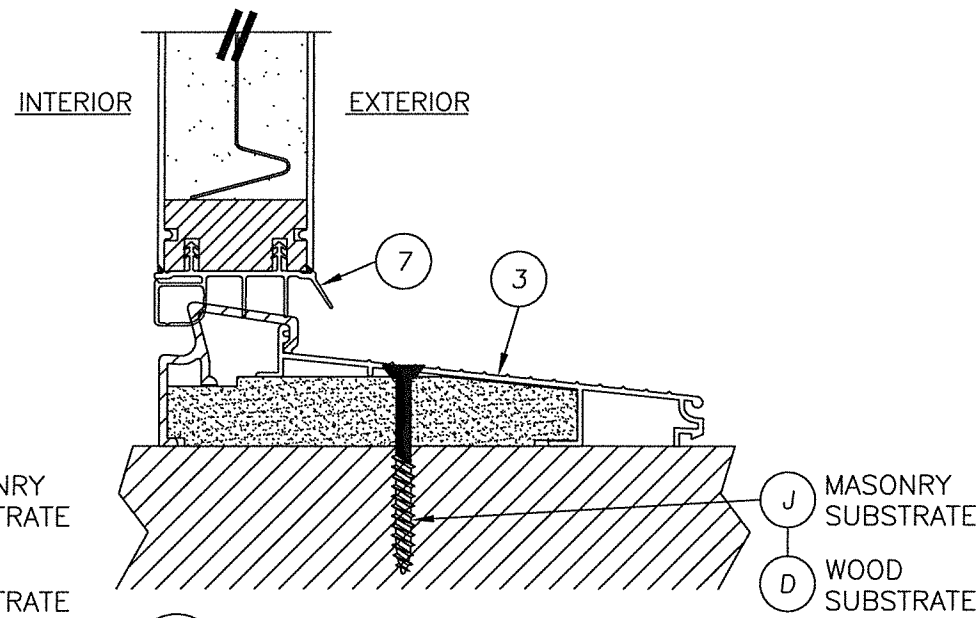
1 VERTICAL CROSS SECTION  
 8 INSWING SHOWN - OUTSWING ALSO APPROVED  
 SMOOTH STAR PANEL SHOWN  
 SEE DOOR PANEL DETAILS FOR  
 OPTIONAL PANEL TYPES



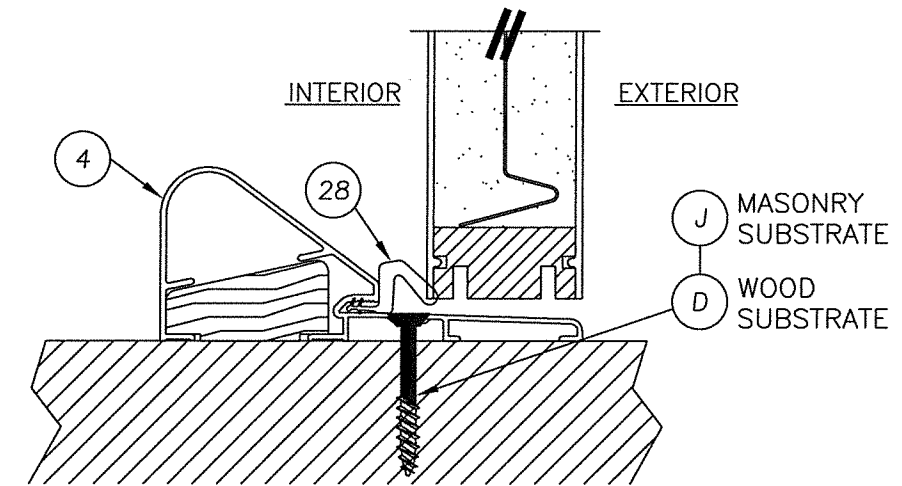
2 VERTICAL CROSS SECTION  
 8 @ THRESHOLD  
 SMOOTH STAR PANEL SHOWN  
 SEE DOOR PANEL DETAILS FOR  
 OPTIONAL PANEL TYPES



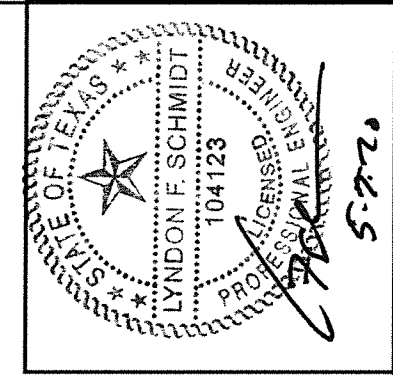
3 VERTICAL CROSS SECTION  
 8 @ THRESHOLD  
 SMOOTH STAR PANEL SHOWN  
 SEE DOOR PANEL DETAILS FOR  
 OPTIONAL PANEL TYPES



4 VERTICAL CROSS SECTION  
 8 @ THRESHOLD  
 SMOOTH STAR PANEL SHOWN  
 SEE DOOR PANEL DETAILS FOR  
 OPTIONAL PANEL TYPES



5 VERTICAL CROSS SECTION  
 8 @ THRESHOLD  
 SMOOTH STAR PANEL SHOWN  
 SEE DOOR PANEL DETAILS FOR  
 OPTIONAL PANEL TYPES



Documents Prepared By: Lyndon F. Schmidt, P.E.  
 TEXAS P.E. #104123

**RW** BUILDING CONSULTANTS, INC.  
 P.O. Box 230 Valrico FL 33595  
 Phone No.: 813.659.9197

© 2012 R.W. BUILDING CONSULTANTS INC.

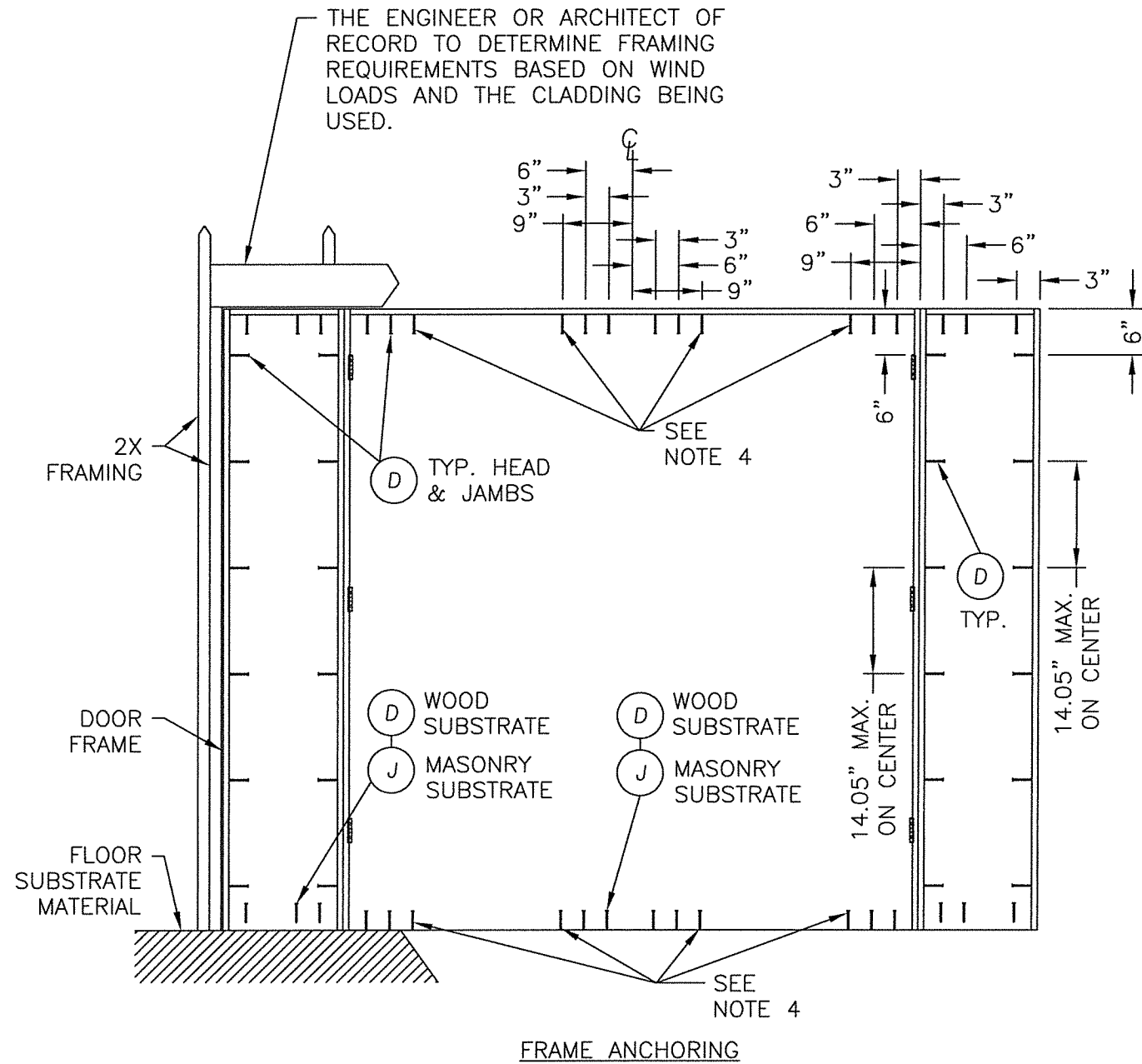
PRODUCT: DOUBLE OPAQUE  
 FIBERGLASS DOOR W/ SIDELITES  
 "IMPACT" INSWING / OUTSWING  
 PART OR ASSEMBLY:  
 VERTICAL CROSS SECTIONS

NO.	DATE	REVISIONS
2	5/06/20	UPDATE TO 2018 IBC/IRC CODE
1	7/16/15	ADDED GENERAL NOTE 5.

DATE:	07/17/12
SCALE:	N.T.S.
DWG. BY:	JK
CHK. BY:	LFS
DRAWING NO.:	TX-4189
SHEET	8 OF 13





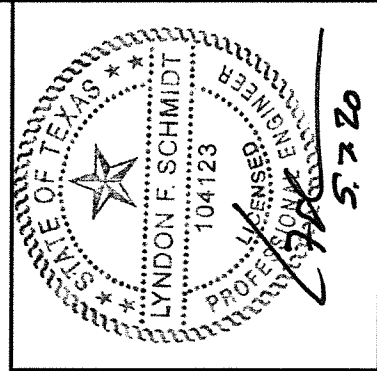
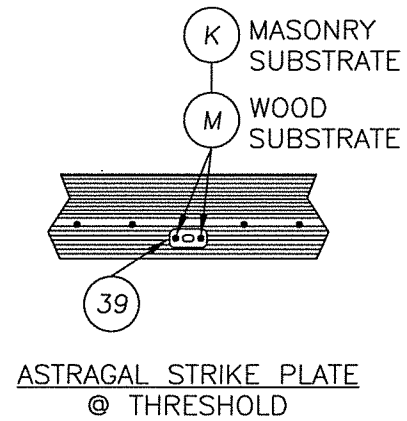
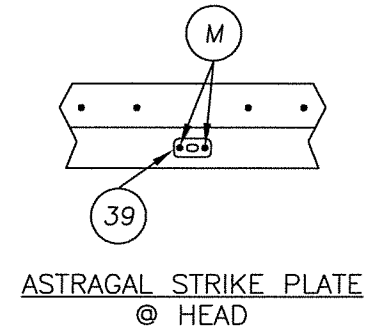


THE ENGINEER OR ARCHITECT OF RECORD TO DETERMINE FRAMING REQUIREMENTS BASED ON WIND LOADS AND THE CLADDING BEING USED.

SEE NOTE 4

SEE NOTE 4

FRAME ANCHORING



Documents Prepared By: Lyndon F. Schmidt, P.E.  
TEXAS P.E. #104123

**RW** BUILDING CONSULTANTS, INC.  
P.O. Box 230 Valrico FL 33595  
Phone No.: 813.659.9197

TEXAS BOARD OF PROFESSIONAL ENGINEERS  
CERTIFICATE OF REGISTRATION # F-11852

PRODUCT: DOUBLE OPAQUE FIBERGLASS DOOR W/ SIDELITES "IMPACT" INSWING / OUTSWING

PART OR ASSEMBLY: FRAME ANCHORING

NO.	DATE	REVISIONS
2	5/06/20	UPDATE TO 2018 IBC/IRC CODE
1	7/16/15	ADDED GENERAL NOTE 5.
		LFS BY

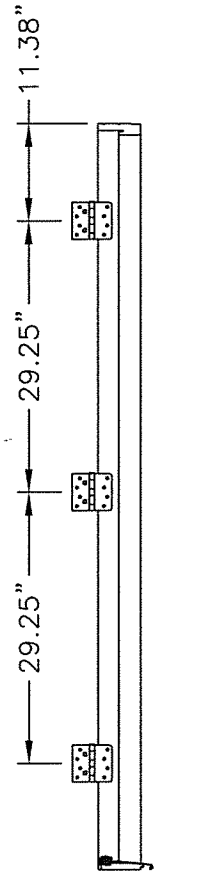
DATE: 07/17/12  
SCALE: N.T.S.  
DWG. BY: JK  
CHK. BY: LFS  
DRAWING NO.: TX-4189  
SHEET 10 OF 13

**CONCRETE ANCHOR NOTES:**

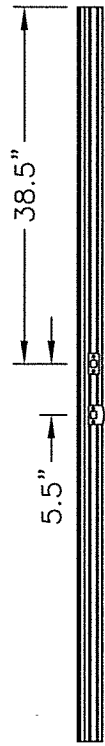
1. Concrete anchor locations at the corners may be adjusted to maintain the min. edge distance to mortar joints.
2. Concrete anchor locations noted as "MAX. ON CENTER" must be adjusted to maintain the min. edge distance to mortar joints, additional concrete anchors may be required to ensure the "MAX. ON CENTER" dimension are not exceeded.
3. Concrete anchor table:

ANCHOR TYPE	ANCHOR SIZE	MIN. EMBEDMENT	MIN. CLEARANCE TO MASONRY EDGE	MIN. CLEARANCE TO ADJACENT ANCHOR
ITW TAPCON®	3/16" 1/4"	1-3/4" 1-3/4"	2-5/8" 2-1/2"	1-1/8" 3"
ELCO ULTRACON®	1/4"	1-3/4"	1"	3"

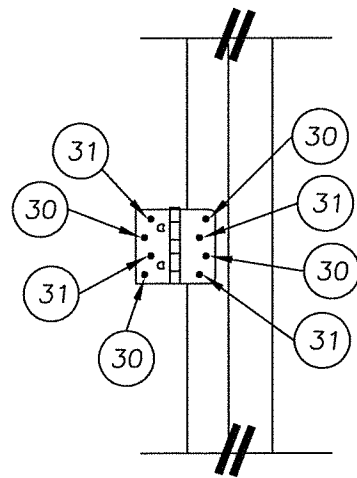
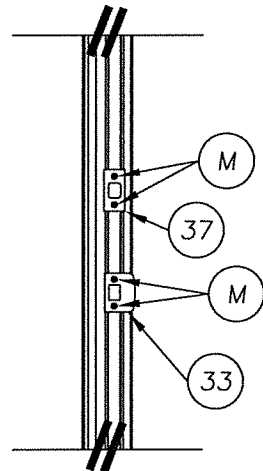
4. THESE SCREWS ARE REQUIRED ONLY WHEN THE DP EXCEEDS 50 PSF.



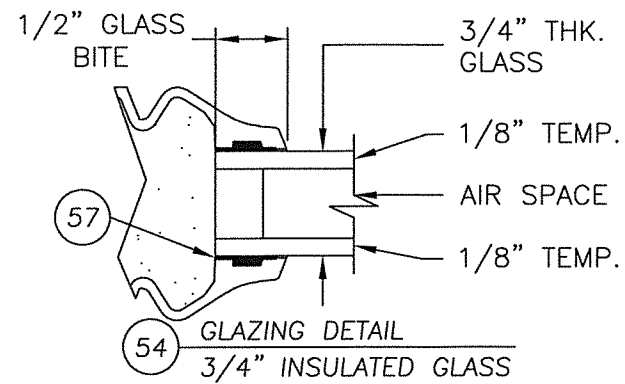
HINGE DETAIL



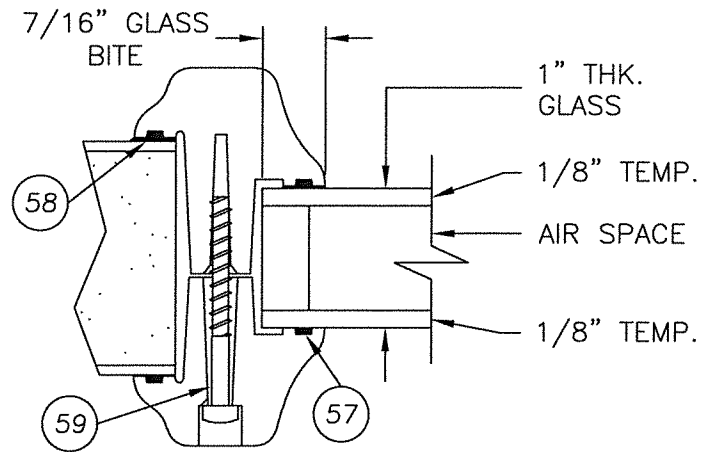
STRIKE PLATE DETAIL  
DOUBLE DOOR



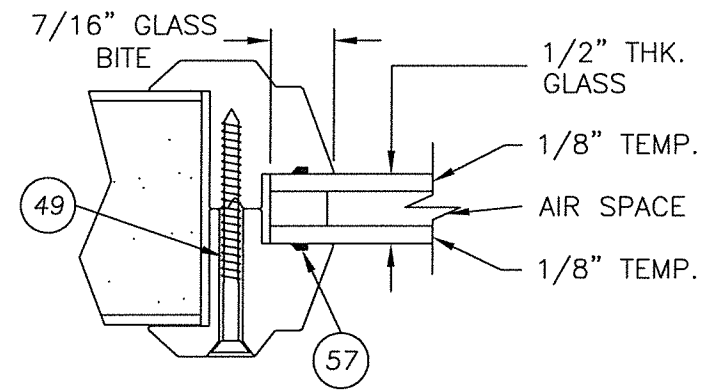
HINGE DETAIL



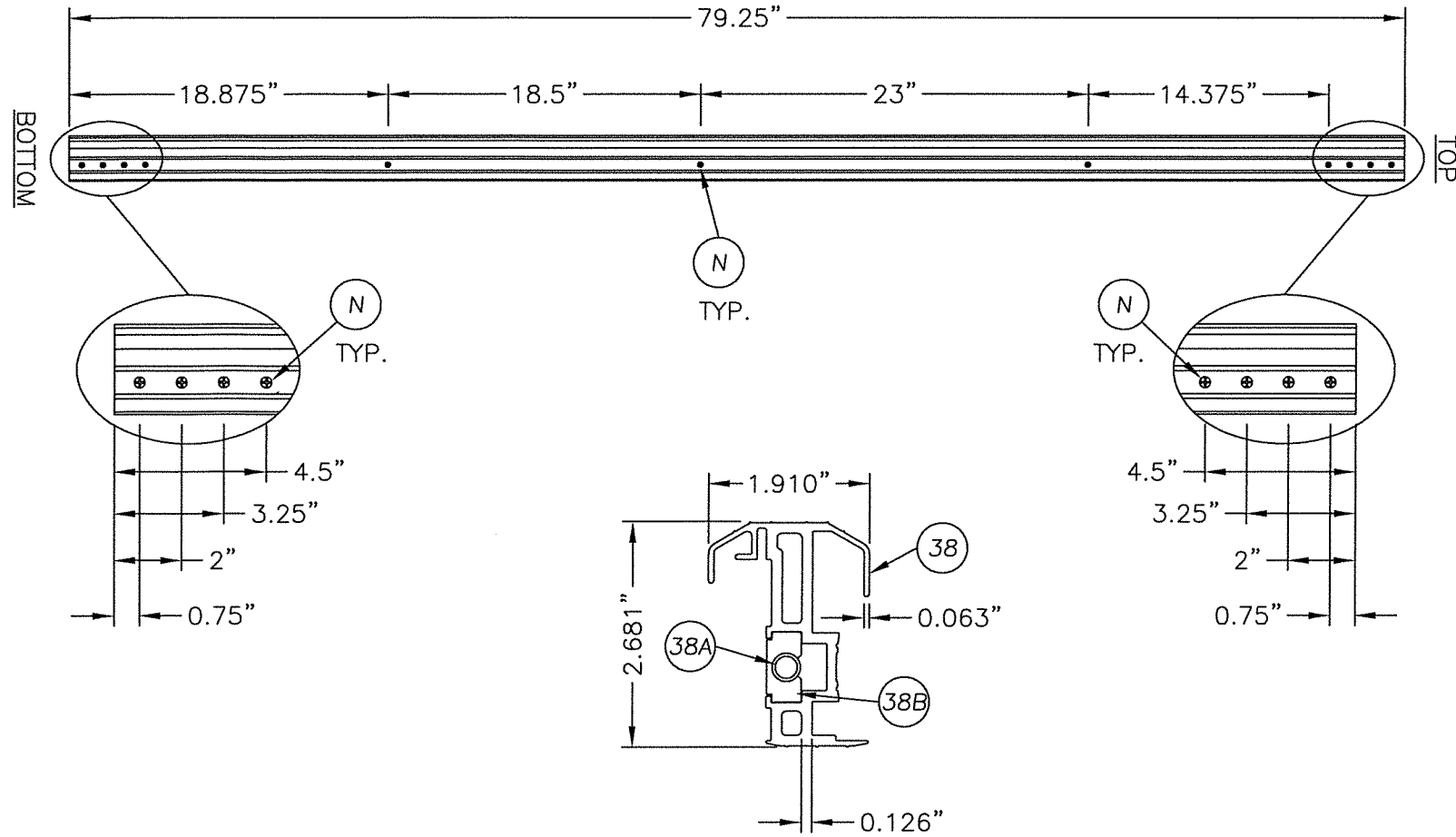
54 GLAZING DETAIL  
3/4" INSULATED GLASS



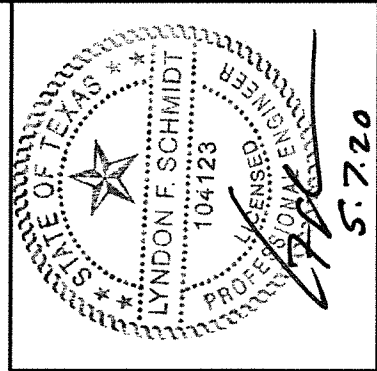
55 GLAZING DETAIL  
1" INSULATED GLASS



56 GLAZING DETAIL  
1/2" INSULATED GLASS



38 ASTRAGAL DETAIL



Documents Prepared By: Lyndon F. Schmidt, P.E.  
TEXAS P.E. #104123

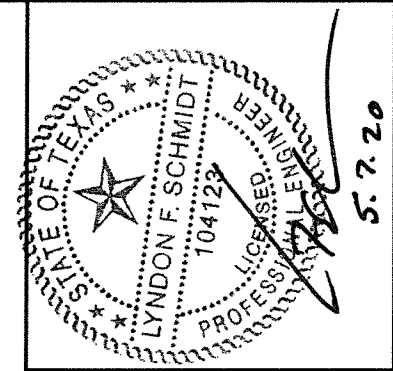
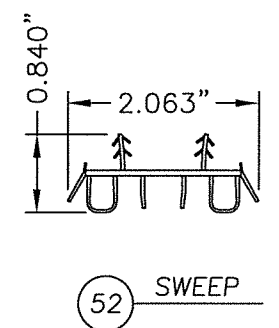
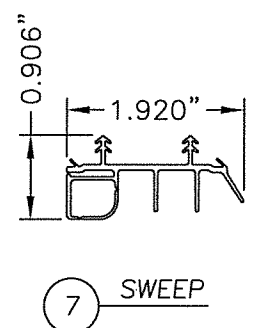
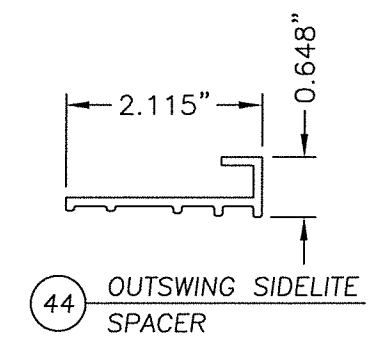
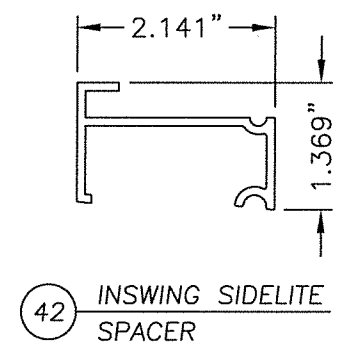
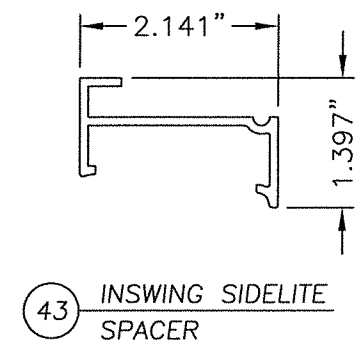
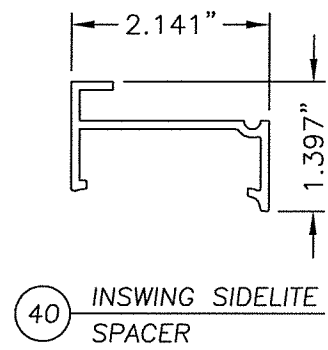
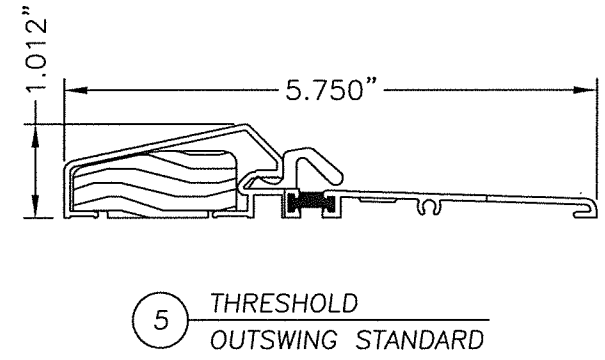
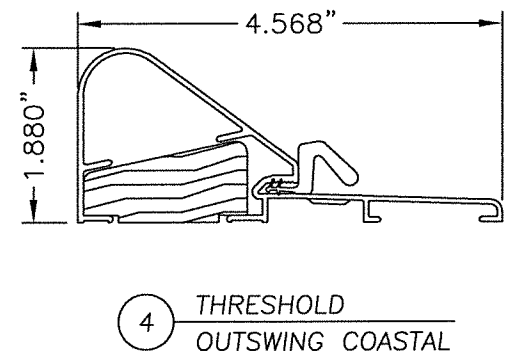
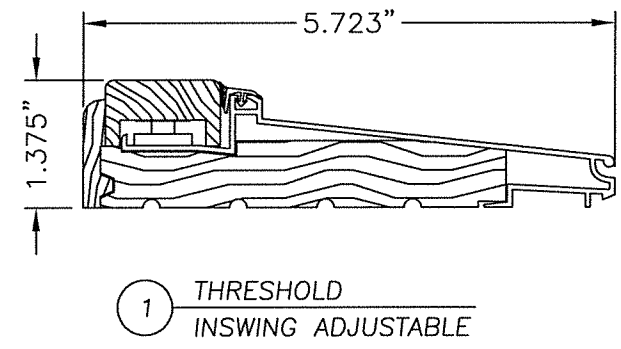
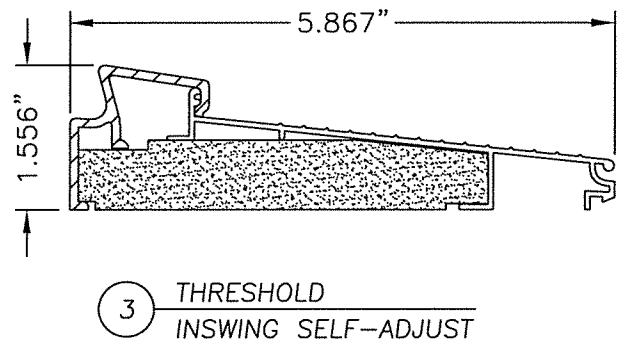
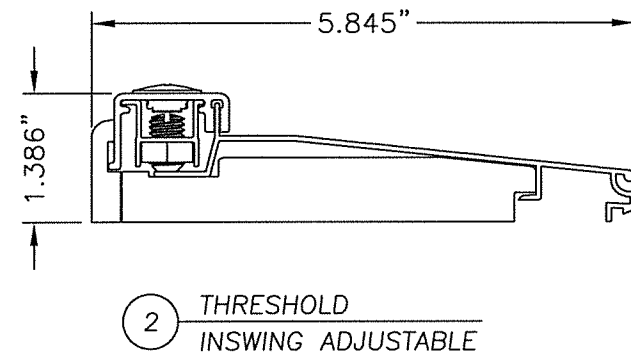
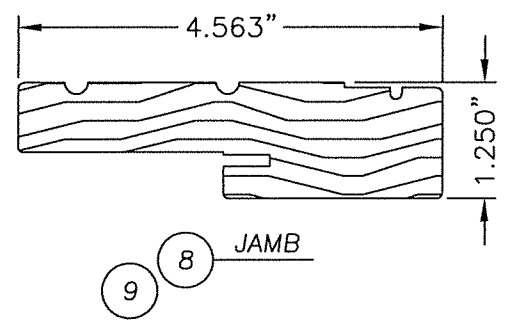
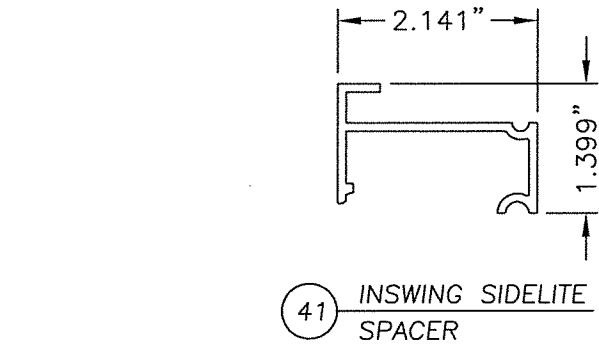
**RW** BUILDING CONSULTANTS, INC.  
P.O. Box 230 Valrico FL 33595  
Phone No.: 813.659.9197

TEXAS BOARD OF PROFESSIONAL ENGINEERS  
CERTIFICATE OF REGISTRATION # F-11852

PRODUCT: DOUBLE OPAQUE  
FIBERGLASS DOOR W/SIDELITES  
"IMPACT" INSWING / OUTSWING  
PART OR ASSEMBLY:  
ASTRAGAL DETAILS, ANCHORING  
DETAILS & GLAZING DETAILS

NO.	DATE	REVISIONS
2	5/06/20	UPDATE TO 2018 IBC/IRC CODE
1	7/16/15	ADDED GENERAL NOTE 5.
LFS		BY
LFS		BY

DATE: 07/17/12  
SCALE: N.T.S.  
DWG. BY: JK  
CHK. BY: LFS  
DRAWING NO.: TX-4189  
SHEET 11 OF 13

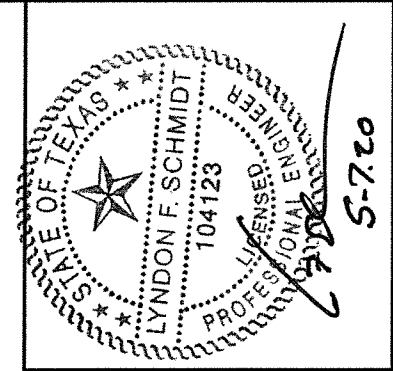


Documents Prepared By: Lyndon F. Schmidt, P.E.  
TEXAS P.E. #104123

**RW** BUILDING CONSULTANTS, INC.  
P.O. Box 230 Valrico FL 33595  
Phone No.: 813.659.9197

TEXAS BOARD OF PROFESSIONAL ENGINEERS  
CERTIFICATE OF REGISTRATION # F-11852

PRODUCT:		DOUBLE OPAQUE FIBERGLASS DOOR W/ SIDELITES "IMPACT" INSWING / OUTSWING	
PART OR ASSEMBLY:		COMPONENTS	
REVISIONS		NO. DATE	
2	5/06/20	UPDATE TO 2018 IBC/IRC CODE	LFS
1	7/16/15	ADDED GENERAL NOTE 5.	LFS
			BY
DATE:		07/17/12	
SCALE:		N.T.S.	
DWG. BY:		JK	
CHK. BY:		LFS	
DRAWING NO.:		TX-4189	
SHEET		12 OF 13	



Documents Prepared By: Lyndon F. Schmidt, P.E.  
TEXAS P.E. #104123

**RW** BUILDING CONSULTANTS, INC.  
P.O. Box 230 Valrico FL 33595  
Phone No.: 813.659.9197

TEXAS BOARD OF PROFESSIONAL ENGINEERS  
CERTIFICATE OF REGISTRATION # F-11852

BILL OF MATERIALS

ITEM	DESCRIPTION	MATERIAL
B	2X FRAMING (G >= 0.42)	WOOD
C	1/4" MAX. SHIM SPACE	WOOD
D	#10 X 2-1/2" PFH WOOD SCREW	STEEL
G	KWIKSET 200 SERIES PASSAGE LOCK	STEEL
H	KWIKSET 600 SERIES DEADBOLT	STEEL
J	1/4" ELCO OR ITW CONCRETE SCREW (1-3/4" MIN. EMB.)	STEEL
K	3/16" ITW CONCRETE SCREW (1-3/4" MIN. EMB.)	STEEL
M	#8 X 3" PFH SCREW (STRIKE PLATES @ HEAD & SILL)	STEEL
N	#10 X 1-1/2" PPH SCREW ASTRAGAL TO PANEL	STEEL
O	1X MULLION (G >= 0.42)	WOOD
1	INSWING ADJUSTABLE THRESHOLD (IS300AJ)	ALUM./WOOD
2	INSWING THRESHOLD (IS300HP5)	-
3	INSWING SELF ADJUST THERMAL BREAK THRESHOLD (ISP30M)	ALUM./COMP.
4	OUTSWING COASTAL THRESHOLD	ALUM./WOOD
5	OUTSWING STANDARD THRESHOLD	ALUM./WOOD
7	DOOR BOTTOM SWEEP	VINYL
8	JAMB (PINE)	WOOD
9	JAMB (OAK)	WOOD
10	HINGE STILE (SMOOTH STAR)	WOOD
11	LOCK STILE (SMOOTH STAR)	LVL/WOOD
12	TOP RAIL (SMOOTH STAR)	PVC
13	BOTTOM RAIL (SMOOTH STAR)	PVC
14	PANEL REINFORCEMENT 0.023" THK. (SMOOTH STAR)	STEEL
15	DOOR SKIN 0.070" THK. (SMOOTH STAR) Fy = 6,000 PSI MIN.	FIBERGLASS
16	HINGE STILE (CLASSIC CRAFT)	WOOD/LVL
17	LOCK STILE (CLASSIC CRAFT)	WOOD/LVL
18	TOP RAIL (CLASSIC CRAFT)	PVC
19	BOTTOM RAIL (CLASSIC CRAFT)	PVC
20	PANEL REINFORCEMENT 0.023" THK. (CLASSIC CRAFT)	STEEL
21	DOOR SKIN 0.090" THK. (CLASSIC CRAFT) Fy = 6,000 PSI MIN.	FIBERGLASS
22	LOCK & HINGE STILE (CLASSIC CRAFT RUSTIC)	WOOD/LVL
23	TOP RAIL (CLASSIC CRAFT RUSTIC)	WOOD
24	BOTTOM RAIL (CLASSIC CRAFT RUSTIC)	PVC
25	PANEL REINFORCEMENT 0.023" THK. (CLASSIC CRAFT RUSTIC)	STEEL
26	DOOR SKIN 0.090" THK. (CC RUSTIC) Fy = 6,000 PSI MIN.	FIBERGLASS
27	FOAM CORE	POLYURETHANE
28	WEATHERSTRIP	FOAM
29	HINGE	STEEL
30	#10 X 2-1/2" PFH SCREW	STEEL
31	#10 X 3/4" PFH SCREW	STEEL
32	#9 X 3" PFH WOOD SCREW	STEEL
33	LATCH STRIKE PLATE	STEEL

BILL OF MATERIALS

ITEM	DESCRIPTION	MATERIAL
37	DEADBOLT STRIKE PLATE	STEEL
38	ASTRAGAL	ALUMINUM
38A	ASTRAGAL FLUSH BOLT	STEEL
38B	ASTRAGAL FLUSH BOLT RETAINER	ALUMINUM
39	ASTRAGAL STRIKE PLATE @ HEAD & THRESHOLD	STEEL
40	INSWING SIDELITE SPACER FOR ADJUSTABLE THRESHOLD (DB14AJA)	PVC
41	INSWING SIDELITE SPACER FOR HP THRESHOLD (DB14HPA)	PVC
42	INSWING SIDELITE SPACER FOR SELF ADJUST THRESHOLD (DB14)	PVC
43	INSWING SIDELITE SPACER	PVC
44	OUTSWING SIDELITE SPACER	PVC
45	SIDELITE STILES & RAILS	WOOD
46	SIDELITE SKIN 0.070" THK. (SMOOTH STAR)	FIBERGLASS
47	SIDELITE SKIN 0.090" THK. (CLASSIC CRAFT)	FIBERGLASS
48	SIDELITE SKIN 0.070" THK. (FIBER CLASSIC)	FIBERGLASS
49	#6 X 1-3/4" PFH SCREW (LITE FRAME)	STEEL
50	LITE FRAME FIBER CLASSIC	PVC
51	LITE FRAME SMOOTH STAR	PVC
52	DOOR BOTTOM SWEEP	VINYL
53	#9 X 2-1/2" PFH WOOD SCREW	STEEL
54	3/4" INSULATED GLASS 1/8" TEMPERED - AIR - 1/8" TEMPERED	GLASS
55	1" INSULATED GLASS 1/8" TEMPERED - AIR - 1/8" TEMPERED	GLASS
56	1/2" INSULATED GLASS 1/8" TEMPERED - AIR - 1/8" TEMPERED	GLASS
57	GLAZING COMPOUND	SILICONE
58	SEALANT	SILICONE
59	#9 X 1" PPH SCREW (LITE FRAME)	STEEL
60	HINGE STILE (FIBER CLASSIC)	WOOD
61	LOCK STILE (FIBER CLASSIC)	LVL/WOOD
62	TOP RAIL (FIBER CLASSIC)	PVC
63	BOTTOM RAIL (FIBER CLASSIC)	PVC
64	PANEL REINFORCEMENT 0.023" THK. (FIBER CLASSIC)	STEEL
65	DOOR SKIN 0.072" THK. (FIBER CLASSIC) Fy = 6,000 PSI MIN.	FIBERGLASS

PRODUCT: DOUBLE OPAQUE  
FIBERGLASS DOOR W/SIDELITES  
"IMPACT" INSWING / OUTSWING

PART OR ASSEMBLY:  
BILL OF MATERIALS

NO.	DATE	REVISIONS
2	5/06/20	UPDATE TO 2018 IBC/IRC CODE
1	7/16/15	ADDED GENERAL NOTE 5.

DATE: 07/17/12  
SCALE: N.T.S.  
DWG. BY: JK  
CHK. BY: LFS  
DRAWING NO.: TX-4189  
SHEET 13 OF 13