

THERMATRU®

118 INDUSTRIAL DR., EDGERTON, OH 43517

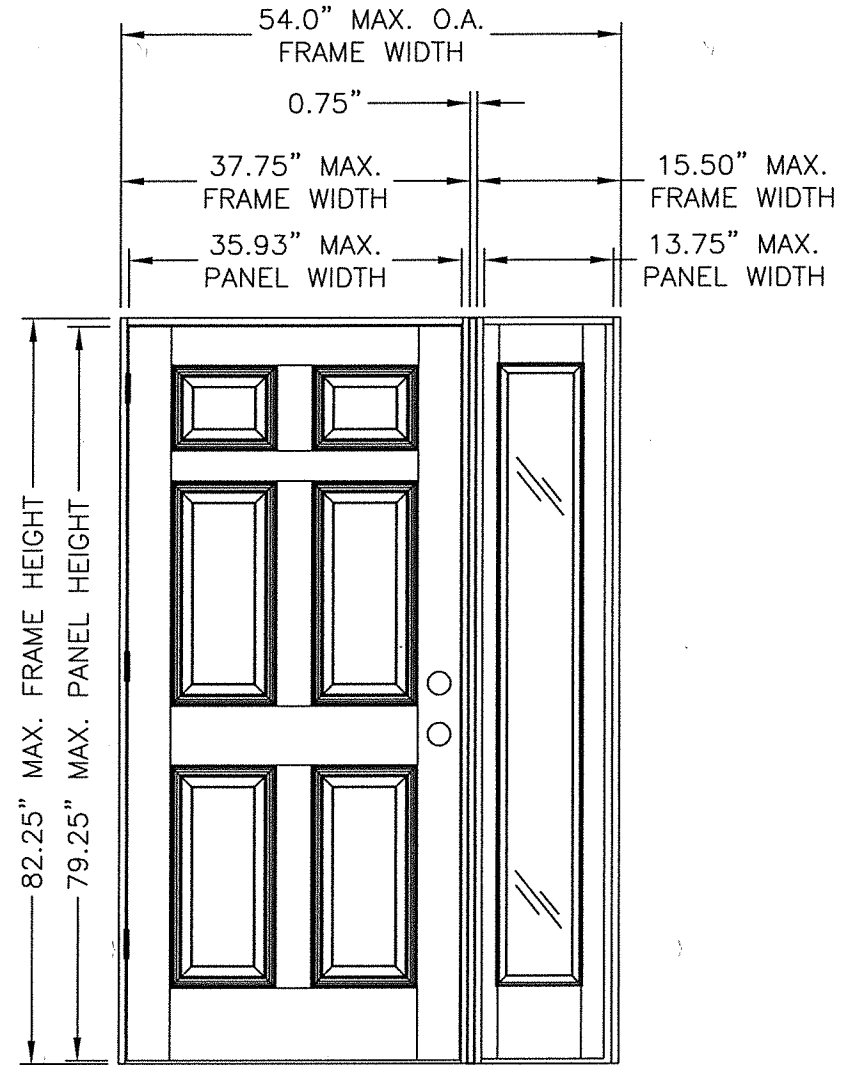
SMOOTH-STAR, FIBER-CLASSIC, CLASSIC-CRAFT & CLASSIC-CRAFT RUSTIC SINGLE "IMPACT" DOOR WITH "NON-IMPACT" SIDELITE IN SWING / OUT SWING

EVALUATED FOR USE IN THE STATE OF TEXAS

The Fiberglass Door system described herein complies with the 2018 International Residential Code (IRC), Sections R301 & R609 and the 2018 International Building Code (IBC), Sections 1404.13, 1609, 1709.5, 2403 and 2404 subject to the following conditions:

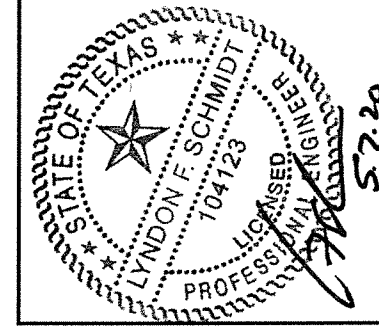
1. Anchors shall be as listed and spaced as shown in the details. Anchor embedment to base material shall be beyond wall dressing or stucco.
2. When used in areas requiring wind-borne debris protection, the opaque door does not require impact protection and meets missile level "D" as defined in ASTM E 1996. The sidelites are required to be protected with an impact resistant covering that complies with Section R301.2.1.2 of the IRC and Section 1609.1.2 of the IBC.
3. Allowable design pressure requirements must be equal to or less than the design pressure rating shown in the design pressure chart, sheet 1 of this drawing.
4. Conditions not covered by this drawing are subject to further engineering analysis.
5. Fiber-Classic and Smooth-Star Door and Sidelite panels require the use of "J" part numbers. These door and sidelite panels must be stained or painted within six months of installation.

TABLE OF CONTENTS	
SHEET #	DESCRIPTION
1	TYPICAL ELEVATIONS, DESIGN PRESSURES & GENERAL NOTES
2	DOOR PANEL DETAILS (SMOOTH STAR)
3	DOOR PANEL DETAILS (CLASSIC CRAFT)
4	DOOR PANEL DETAILS (CLASSIC CRAFT RUSTIC)
5	DOOR PANEL DETAILS (FIBER CLASSIC)
6	SIDELITE PANEL DETAILS
7	HORIZONTAL CROSS SECTIONS
8	VERTICAL CROSS SECTIONS
9	VERTICAL CROSS SECTIONS
10	FRAME ANCHORING
11	COMPONENTS
12	BILL OF MATERIALS & GLAZING DETAILS



"SMOOTH STAR", "CLASSIC CRAFT", "CLASSIC CRAFT RUSTIC" & "FIBER CLASSIC"

DOOR TYPE	SWING	OVERALL FRAME DIMENSION	OVERALL SIDELITE D.L.O. DIMENSION	DESIGN PRESSURE	
				POSITIVE	NEGATIVE
CLASSIC CRAFT	OUTSWING	54.0" X 80.75"	7.09" X 63.09"	+65.0	-65.0
	IN SWING	54.0" X 82.25"		+65.0	-65.0
FIBER CLASSIC	OUTSWING	54.0" X 80.75"		+65.0	-65.0
	IN SWING	54.0" X 82.25"		+65.0	-65.0
SMOOTH STAR	OUTSWING	54.0" X 80.75"		+65.0	-65.0
	IN SWING	54.0" X 82.25"		+65.0	-65.0
CLASSIC CRAFT RUSTIC	OUTSWING	54.0" X 80.75"	+65.0	-65.0	
	IN SWING	54.0" X 82.25"	+65.0	-65.0	



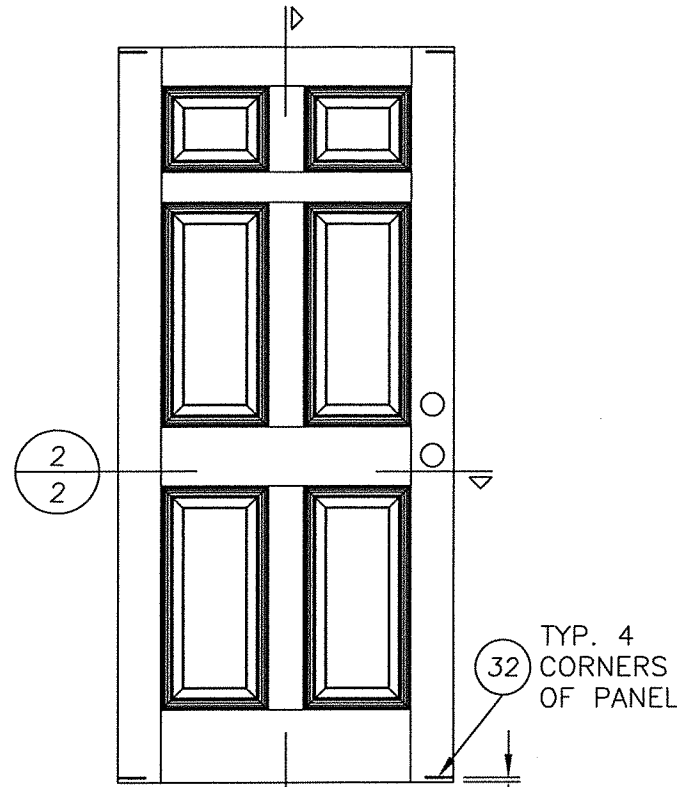
Documents Prepared By: Lyndon F. Schmidt, P.E.
TEXAS P.E. #104123

RW BUILDING CONSULTANTS, INC.
P.O. Box 230 Valrico FL 33595
Phone No.: 813.659.9197
TEXAS BOARD OF PROFESSIONAL ENGINEERS
CERTIFICATE OF REGISTRATION # F-11852

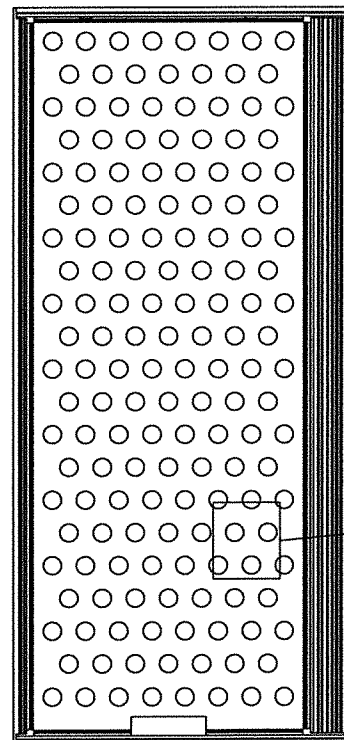
PRODUCT: SINGLE OPAQUE FIBERGLASS DOOR W/SIDELITE "IMPACT" IN SWING / OUTSWING PART OR ASSEMBLY:
TYPICAL ELEVATIONS, DESIGN PRESSURES & GENERAL NOTES

NO.	DATE	REVISIONS
2	5/06/20	UPDATE TO 2018 IBC/IRC CODE
1	7/16/15	ADDED GENERAL NOTE 5.

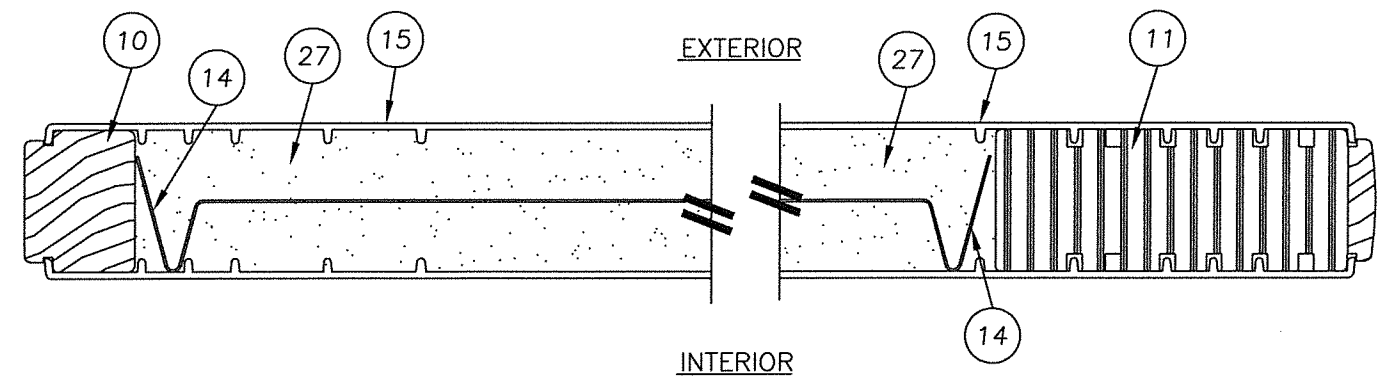
DATE: 07/17/12
SCALE: N.T.S.
DWG. BY: JK
CHK. BY: LFS
DRAWING NO.: TX-4186
SHEET 1 OF 12



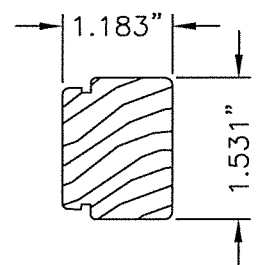
SMOOTH STAR



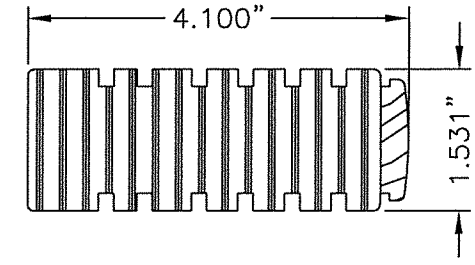
28.86% OPEN AREA MAX.



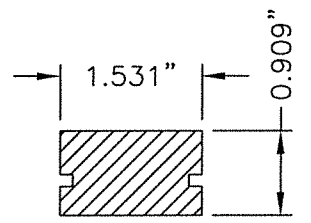
2 HORIZONTAL CROSS SECTION
2 SMOOTH STAR



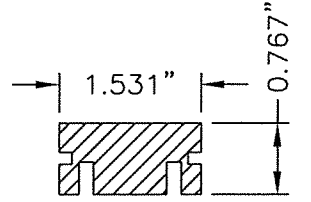
10 HINGE STILE
SMOOTH STAR



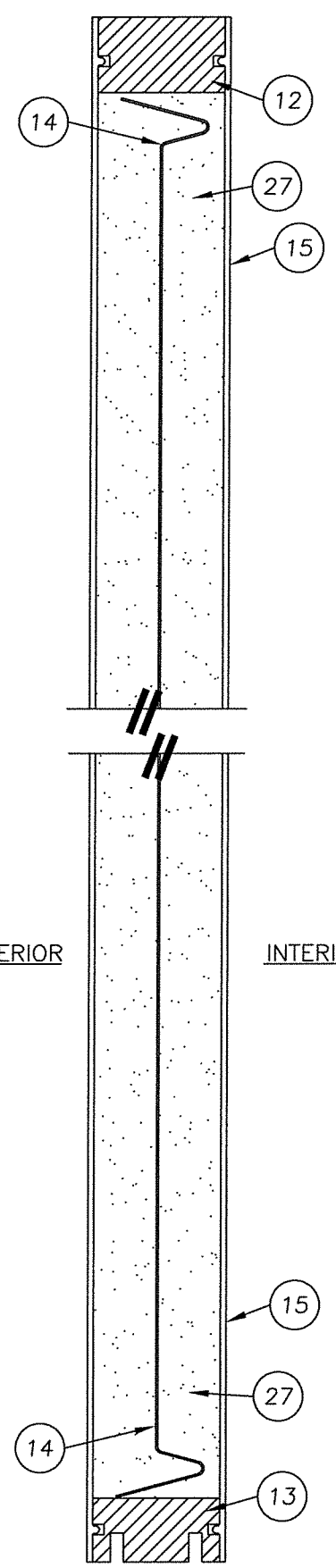
11 LOCK STILE
SMOOTH STAR



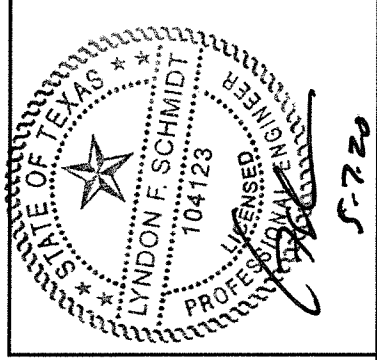
12 TOP RAIL
SMOOTH STAR



13 BOTTOM RAIL
SMOOTH STAR



1 VERTICAL CROSS SECTION
2 SMOOTH STAR



Documents Prepared By: Lyndon F. Schmidt, P.E.
TEXAS P.E. #104123

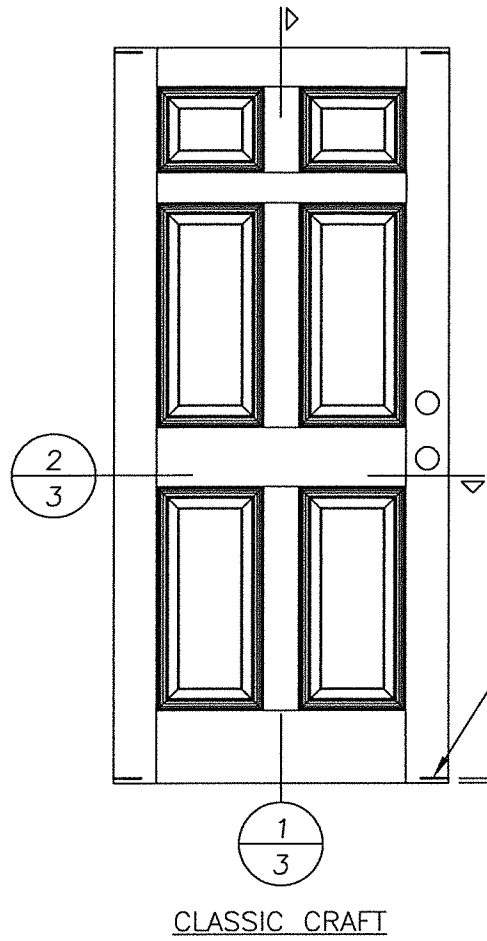
RW BUILDING CONSULTANTS, INC.
P.O. Box 230 Volrico FL 33595
Phone No.: 813.659.9197

TEXAS BOARD OF PROFESSIONAL ENGINEERS
CERTIFICATE OF REGISTRATION # F-11852

PRODUCT: SINGLE OPAQUE FIBERGLASS DOOR W/SIDELITE "IMPACT" INSWING / OUTSWING PART OR ASSEMBLY: DOOR PANEL DETAILS (SMOOTH STAR)

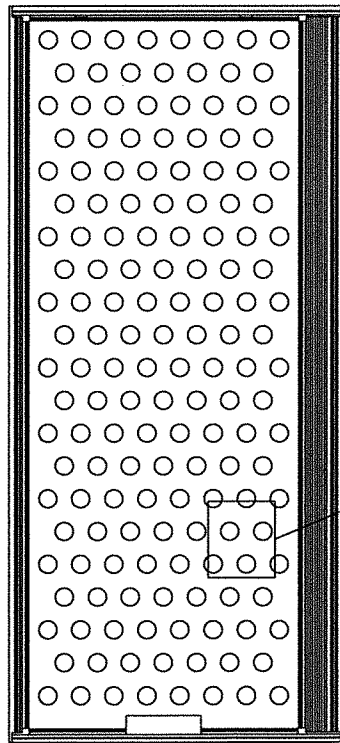
NO.	DATE	REVISIONS
2	5/06/20	UPDATE TO 2018 IBC/IRC CODE
1	7/16/15	ADDED GENERAL NOTE 5.
		LFS BY

DATE: 07/17/12
SCALE: N.T.S.
DWG. BY: JK
CHK. BY: LFS
DRAWING NO.: TX-4186
SHEET 2 OF 12



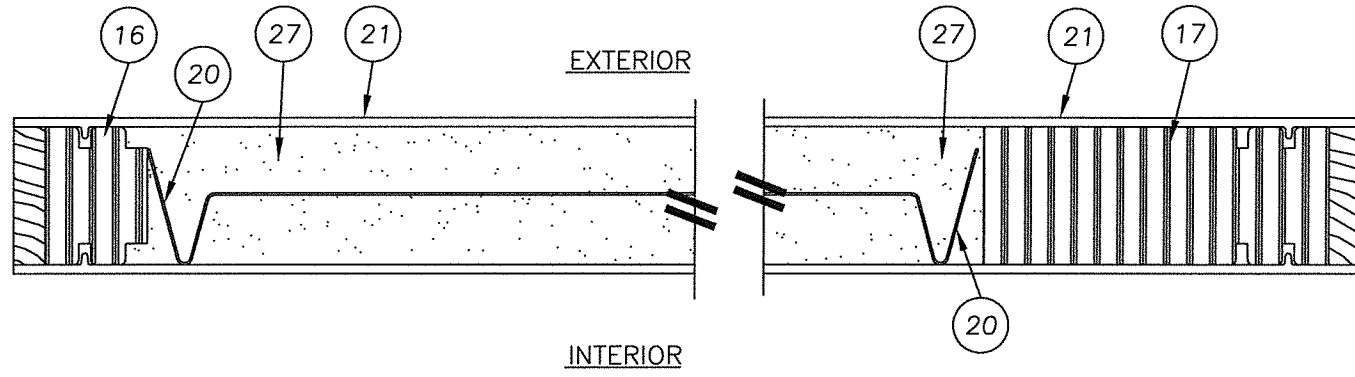
CLASSIC CRAFT

TYP. 4
CORNERS
OF PANEL

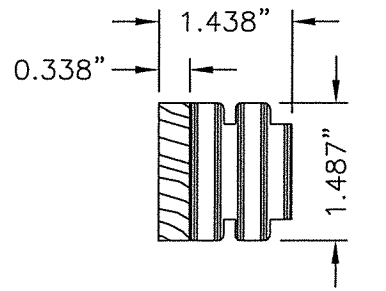


ø2" DIA.
MAX.

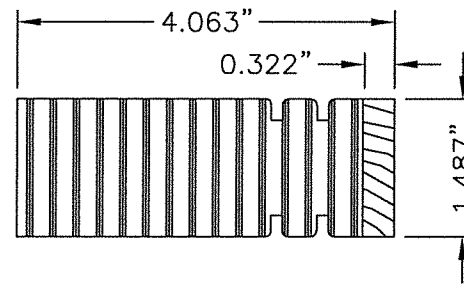
28.86% OPEN
AREA MAX.



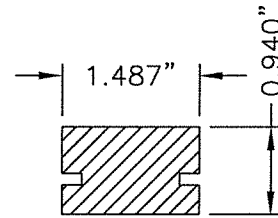
2 HORIZONTAL CROSS SECTION
3 (CLASSIC CRAFT)



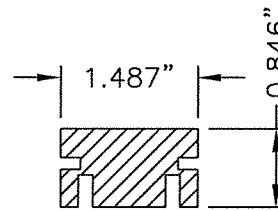
16 HINGE STILE
CLASSIC CRAFT



17 LOCK STILE
CLASSIC CRAFT



18 TOP RAIL
CLASSIC CRAFT

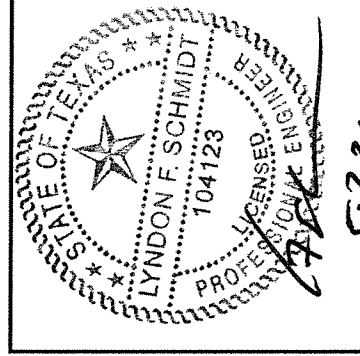
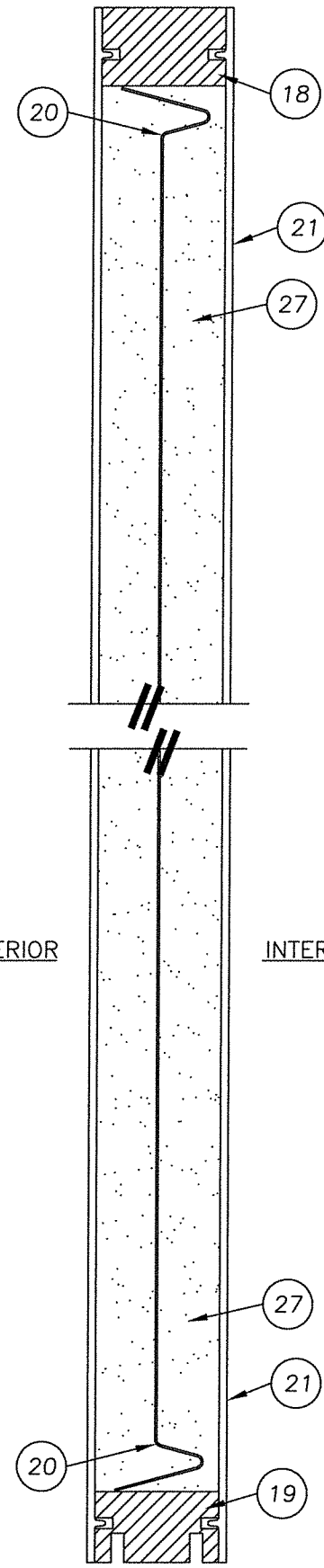


19 BOTTOM RAIL
CLASSIC CRAFT

EXTERIOR

INTERIOR

1 VERTICAL CROSS SECTION
3 (CLASSIC CRAFT)



Documents Prepared By: Lyndon F. Schmidt, P.E.
TEXAS P.E. #104123

RW BUILDING CONSULTANTS, INC.
P.O. Box 230 Vairico FL 33595
Phone No.: 813.659.9197

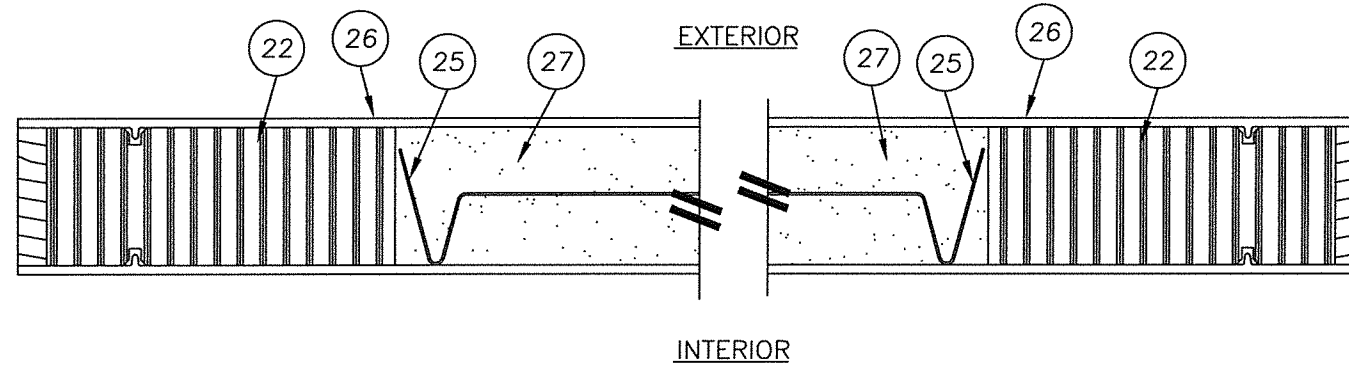
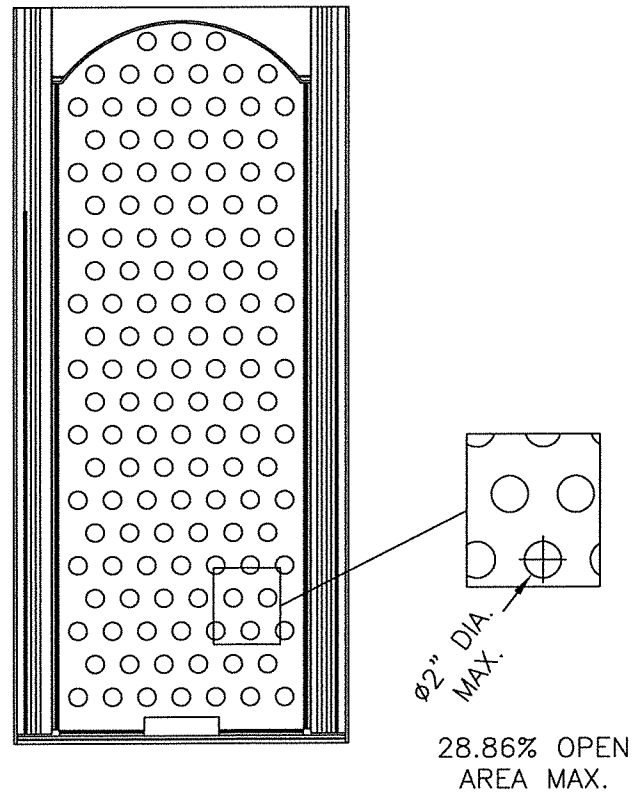
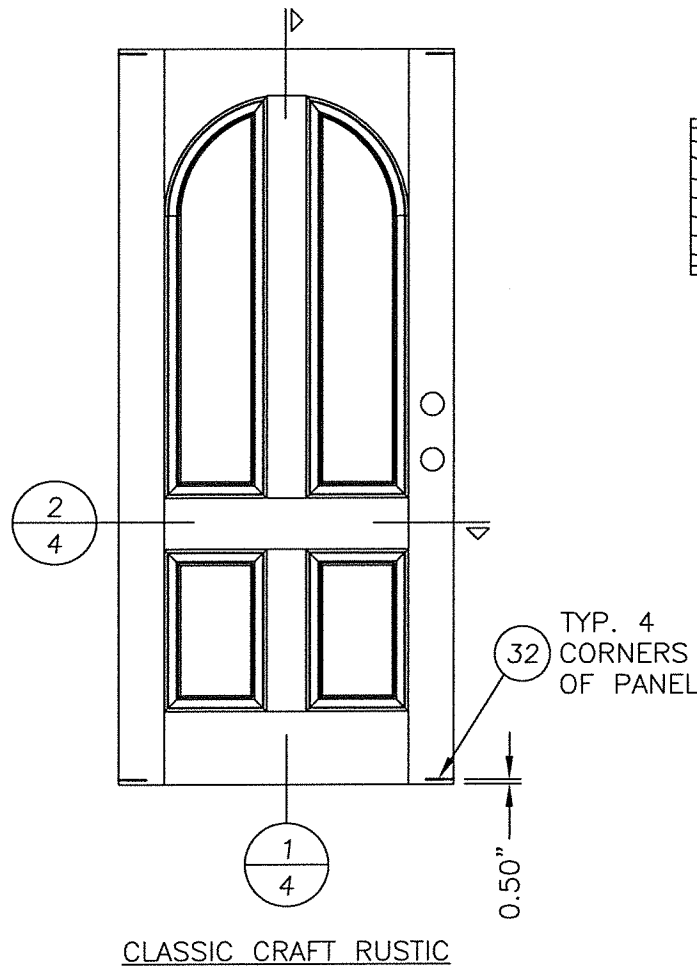
TEXAS BOARD OF PROFESSIONAL ENGINEERS
CERTIFICATE OF REGISTRATION # F-11852

PRODUCT: SINGLE OPAQUE
FIBERGLASS DOOR W/SIDELITE
"IMPACT" INSWING / OUTSWING

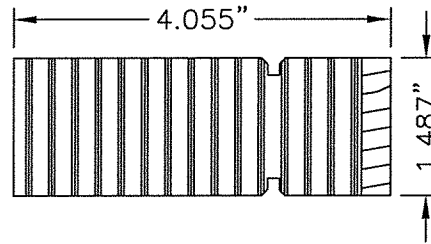
PART OR ASSEMBLY:
DOOR PANEL DETAILS
(CLASSIC CRAFT)

NO.	DATE	REVISIONS
2	5/06/20	UPDATE TO 2018 IBC/IRC CODE
1	7/16/15	ADDED GENERAL NOTE 5.
LFS		BY

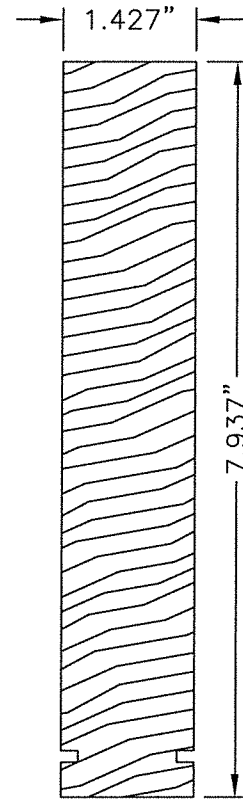
DATE: 7/17/12
SCALE: N.T.S.
DWG. BY: JK
CHK. BY: LFS
DRAWING NO.: TX-4186
SHEET 3 OF 12



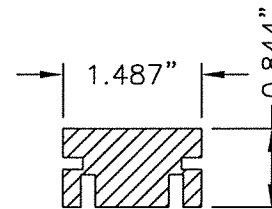
2/4 HORIZONTAL CROSS SECTION (CLASSIC CRAFT RUSTIC)



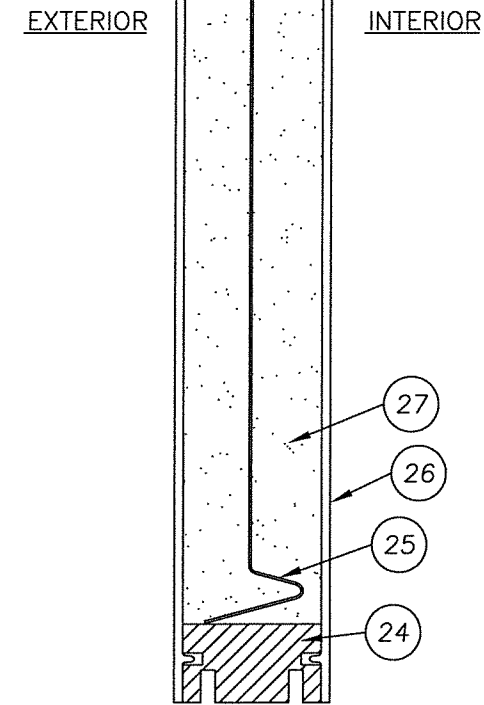
22 LOCK & HINGE STILE CLASSIC CRAFT RUSTIC



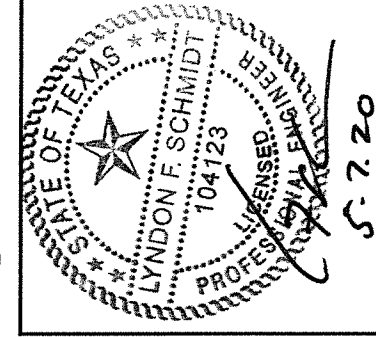
23 TOP RAIL CLASSIC CRAFT RUSTIC



24 BOTTOM RAIL CLASSIC CRAFT RUSTIC



1/4 VERTICAL CROSS SECTION (CLASSIC CRAFT RUSTIC)



Documents Prepared By: Lyndon F. Schmidt, P.E.
TEXAS P.E. #104123

RW BUILDING CONSULTANTS, INC.
P.O. Box 230 Volrico FL 33595
Phone No.: 813.659.9197

TEXAS BOARD OF PROFESSIONAL ENGINEERS
CERTIFICATE OF REGISTRATION # F-11852

PRODUCT: SINGLE OPAQUE FIBERGLASS DOOR W/SIDELITE "IMPACT" INSWING / OUTSWING PART OR ASSEMBLY: DOOR PANEL DETAILS (CLASSIC CRAFT RUSTIC)

NO.	DATE	REVISIONS	BY
2	5/06/20	UPDATE TO 2018 IBC/IRC CODE	LFS
1	7/16/15	ADDED GENERAL NOTE 5.	LFS

DATE: 07/17/12

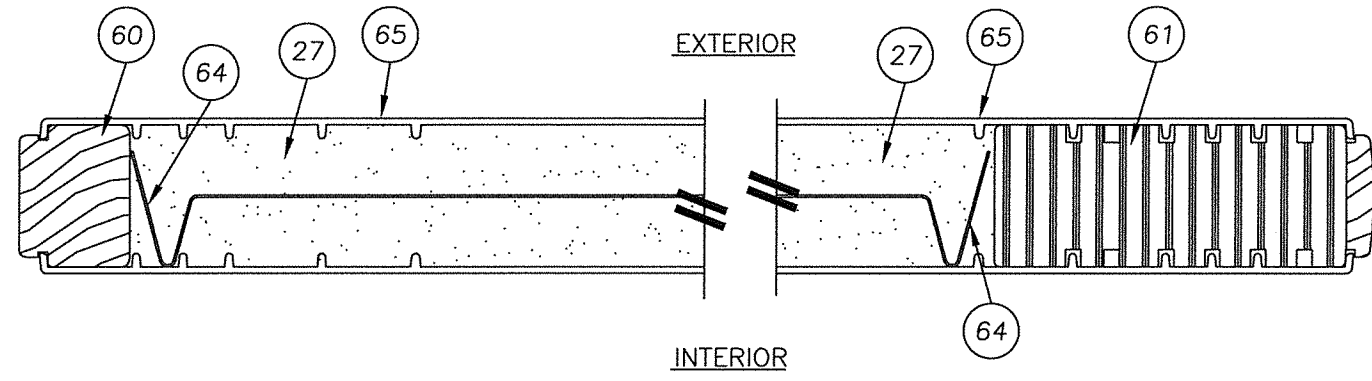
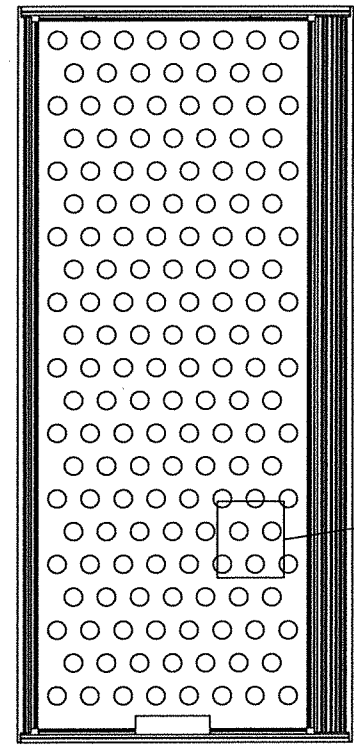
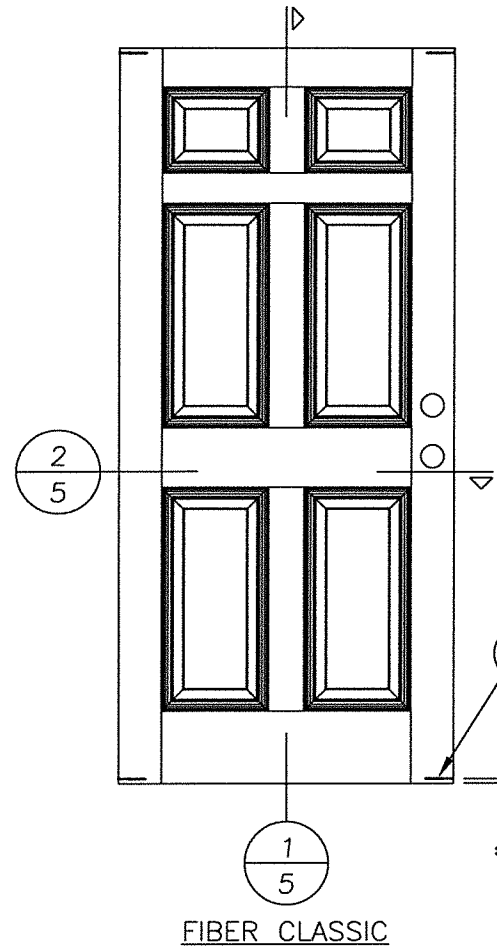
SCALE: N.T.S.

DWG. BY: JK

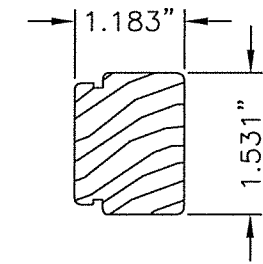
CHK. BY: LFS

DRAWING NO.: TX-4186

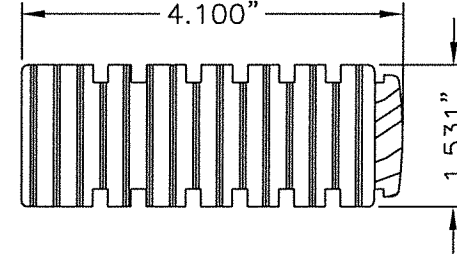
SHEET 4 OF 12



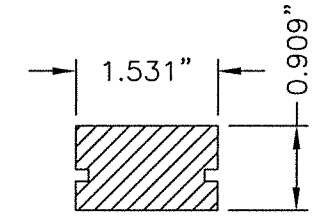
2 HORIZONTAL CROSS SECTION
5 FIBER CLASSIC



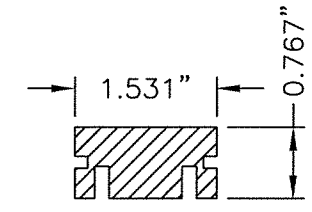
60 HINGE STILE
FIBER CLASSIC



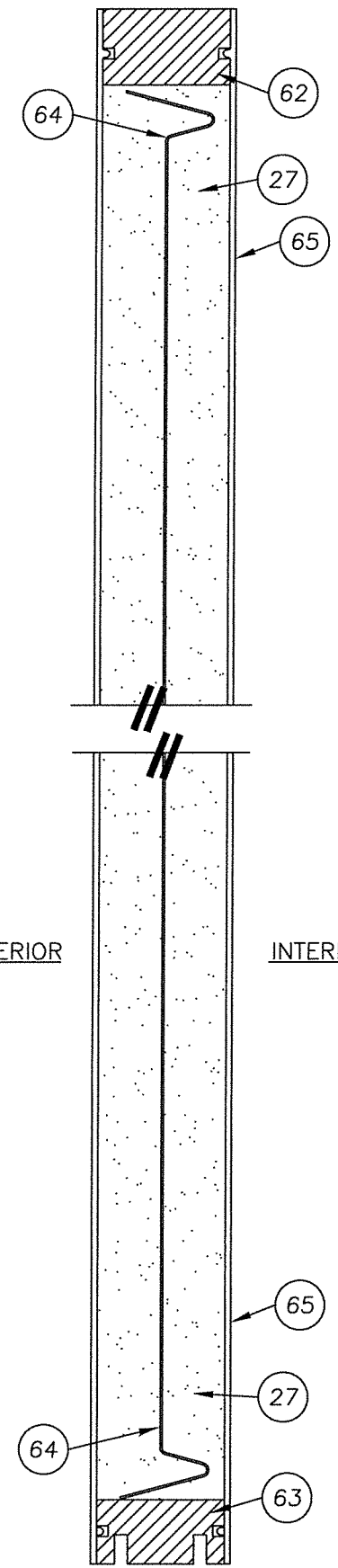
61 LOCK STILE
FIBER CLASSIC



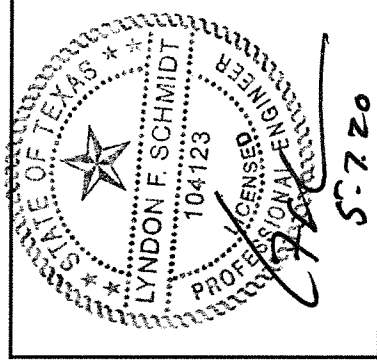
62 TOP RAIL
FIBER CLASSIC



63 BOTTOM RAIL
FIBER CLASSIC



1 VERTICAL CROSS SECTION
5 FIBER CLASSIC



Documents Prepared By: Lyndon F. Schmidt, P.E.
TEXAS P.E. #104123

RW BUILDING CONSULTANTS, INC.
P.O. Box 230 Valrico FL 33595
Phone No.: 813.659.9197

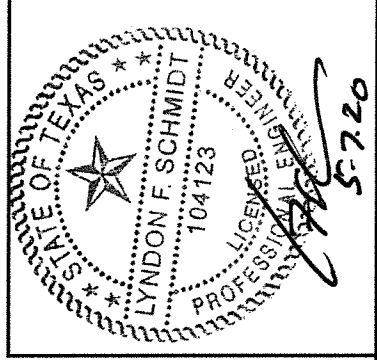
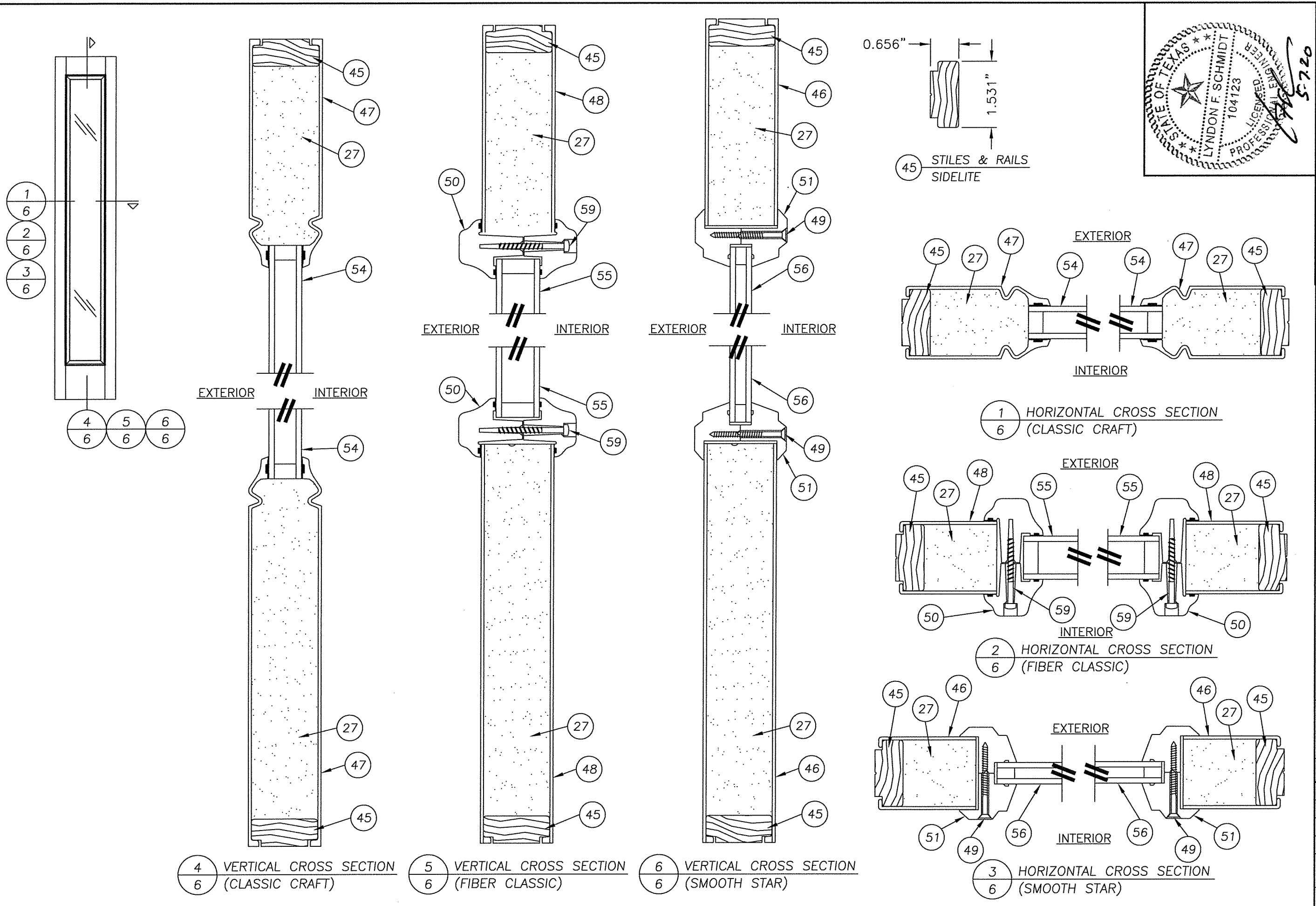
TEXAS BOARD OF PROFESSIONAL ENGINEERS
CERTIFICATE OF REGISTRATION # F-11852

PRODUCT: SINGLE OPAQUE
FIBERGLASS DOOR W/SIDELITE
"IMPACT" INSWING / OUTSWING

PART OR ASSEMBLY:
DOOR PANEL DETAILS
(FIBER CLASSIC)

NO.	DATE	REVISIONS	BY
2	5/06/20	UPDATE TO 2018 IBC/IRC CODE	LFS
1	7/16/15	ADDED GENERAL NOTE 5.	LFS

DATE: 07/17/12
SCALE: N.T.S.
DWG. BY: JK
CHK. BY: LFS
DRAWING NO.: TX-4186
SHEET 5 OF 12



Documents Prepared By: Lyndon F. Schmidt, P.E.
TEXAS P.E. #104123

RW BUILDING CONSULTANTS, INC.
P.O. Box 230 Valrico FL 33595
Phone No.: 813.659.9197

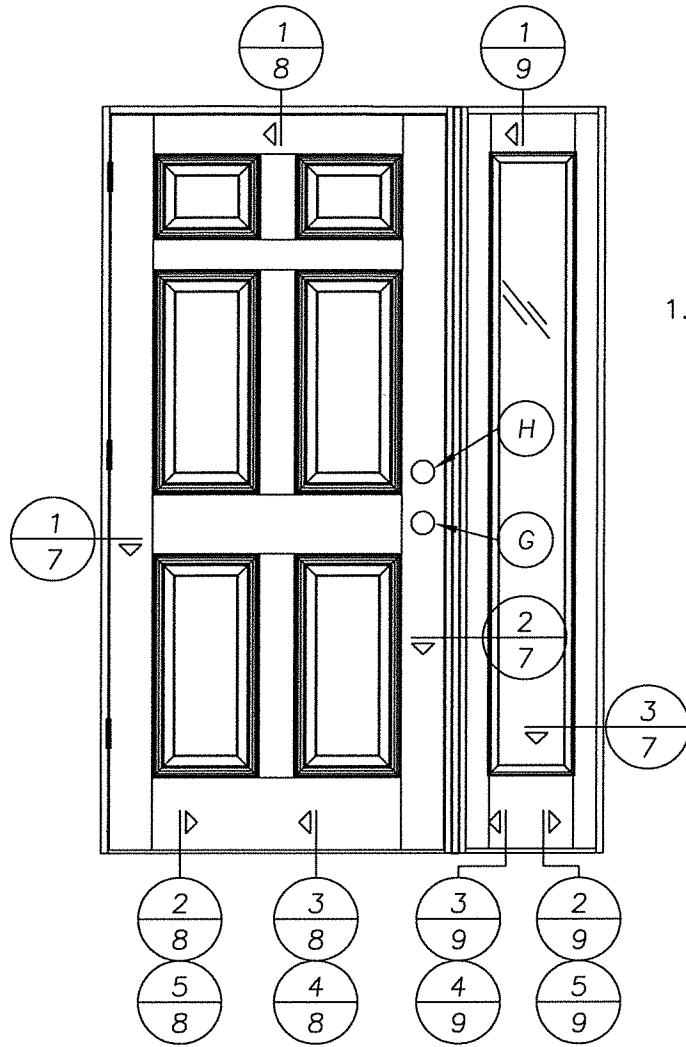
TEXAS BOARD OF PROFESSIONAL ENGINEERS
CERTIFICATE OF REGISTRATION # F-11852

PRODUCT: SINGLE OPAQUE
FIBERGLASS DOOR W/SIDELITE
"IMPACT" INSWING / OUTSWING
PART OR ASSEMBLY:
SIDELITE PANEL DETAILS

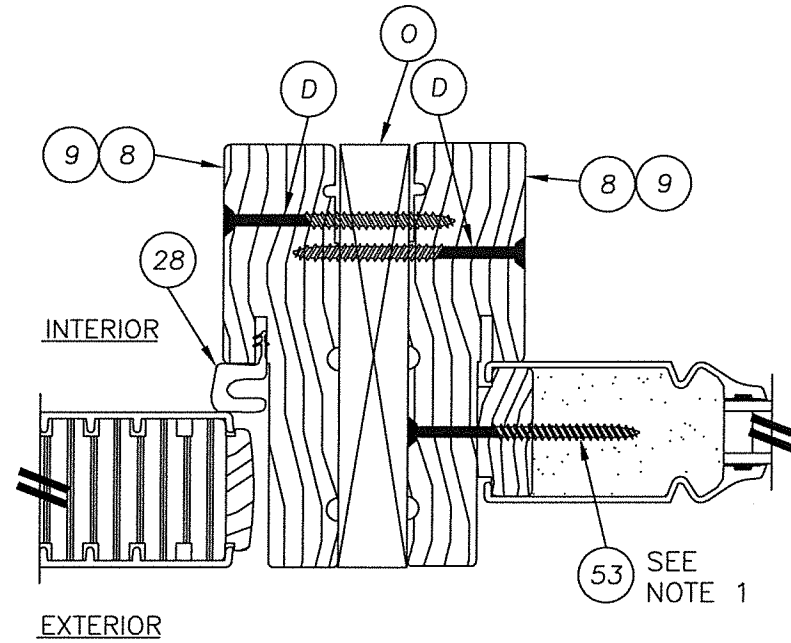
NO.	DATE	REVISIONS
2	5/06/20	UPDATE TO 2018 IBC/IRC CODE
1	7/16/15	ADDED GENERAL NOTE 5.

DATE: 07/17/12
SCALE: N.T.S.
DWG. BY: JK
CHK. BY: LFS
DRAWING NO.: TX-4186
SHEET 6 OF 12

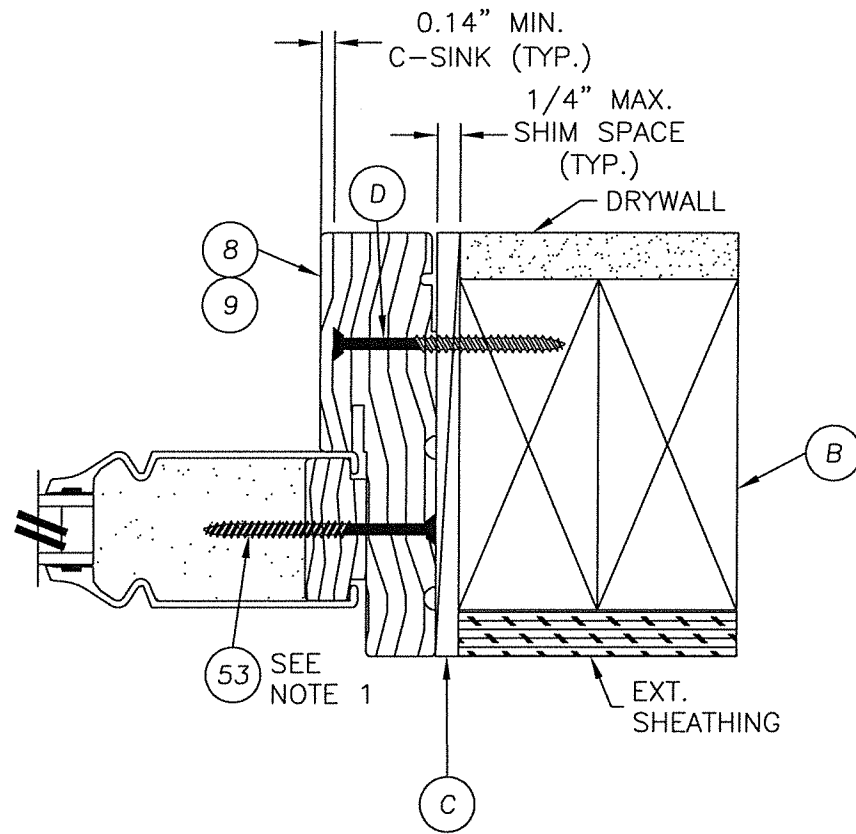
R:\Clients\Therma Tru PERMANENT\B - Texas Dept of Ins\TDI - DR 276 - 68 Opaque FG Imp IS - OS Sgls Dbls w-wo Non-Imp SL\C - Drawings\Current\TX-4184-89.dwg, FOX7



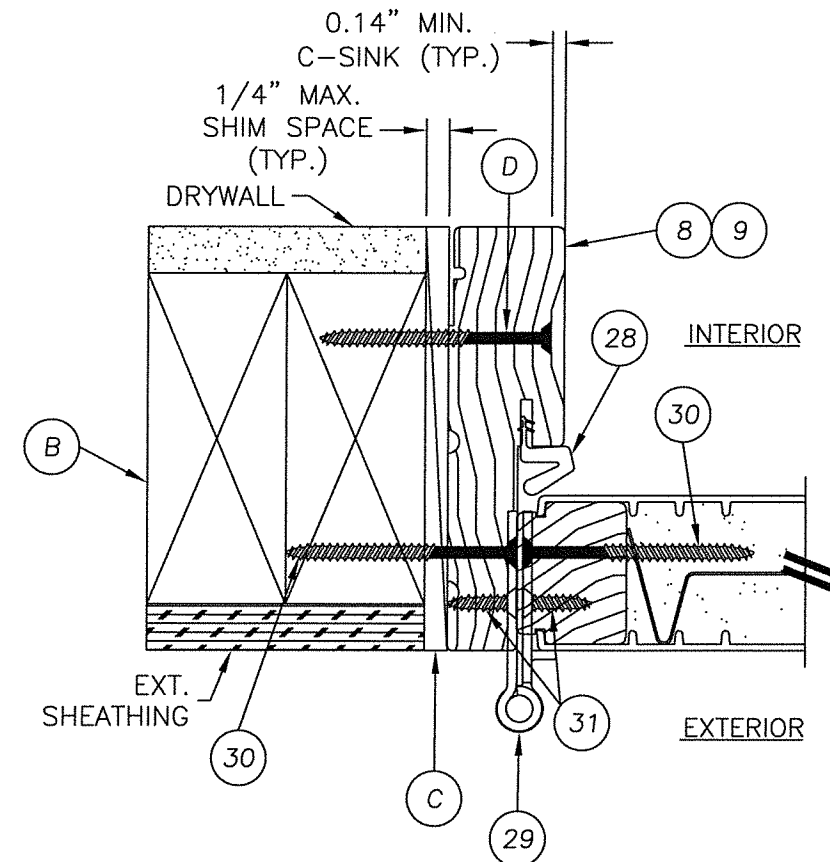
NOTE:
 1. SIDELITE ASSEMBLY SCREWS LOCATED 4" FROM ENDS AND 5 MORE EQUALLY SPACED (7 TOTAL).



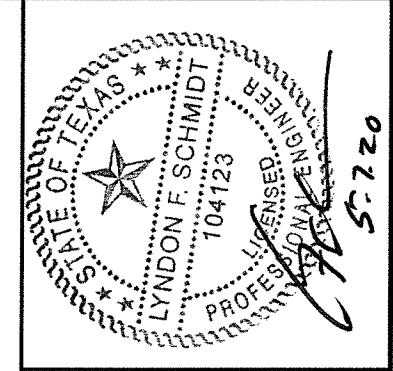
2 HORIZONTAL CROSS SECTION
7 OUTSWING SHOWN - INSWING ALSO APPROVED
 SMOOTH STAR PANEL SHOWN
 SEE DOOR PANEL DETAILS FOR
 OPTIONAL PANEL TYPES



3 HORIZONTAL CROSS SECTION
7 OUTSWING SHOWN - INSWING ALSO APPROVED
 SMOOTH STAR PANEL SHOWN
 SEE DOOR PANEL DETAILS FOR
 OPTIONAL PANEL TYPES



1 HORIZONTAL CROSS SECTION
7 OUTSWING SHOWN - INSWING ALSO APPROVED
 SMOOTH STAR PANEL SHOWN
 SEE DOOR PANEL DETAILS FOR
 OPTIONAL PANEL TYPES



Documents Prepared By: Lyndon F. Schmidt, P.E.
 TEXAS P.E. #104123

RW BUILDING CONSULTANTS, INC.
 P.O. Box 230 Valrico FL 33595
 Phone No.: 813.659.9197

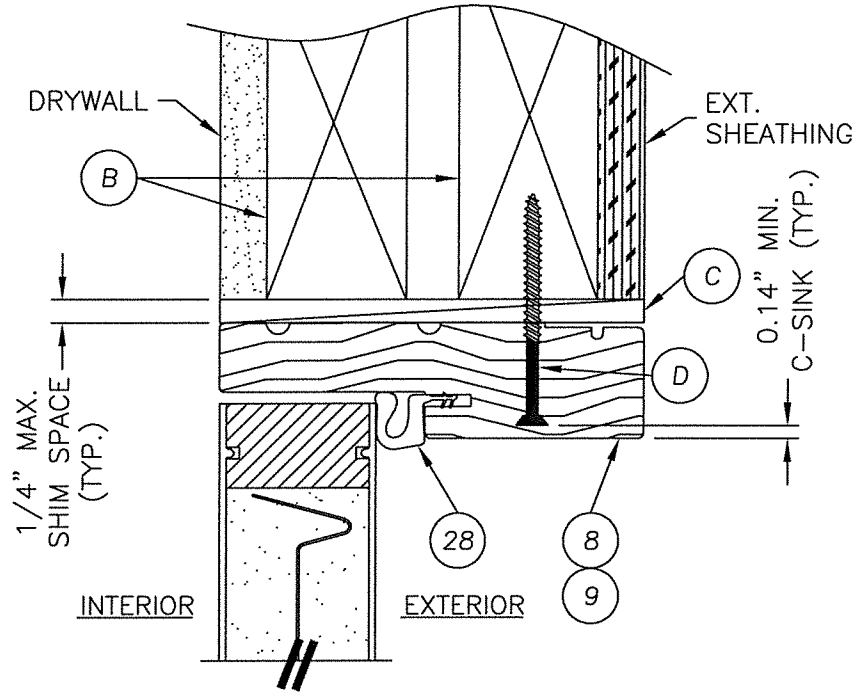
TEXAS BOARD OF PROFESSIONAL ENGINEERS
 CERTIFICATE OF REGISTRATION # F-11852

PRODUCT: SINGLE OPAQUE
 FIBERGLASS DOOR W/SIDELITE
 "IMPACT" INSWING / OUTSWING
 PART OR ASSEMBLY:
 HORIZONTAL CROSS SECTIONS
 & GLAZING DETAILS

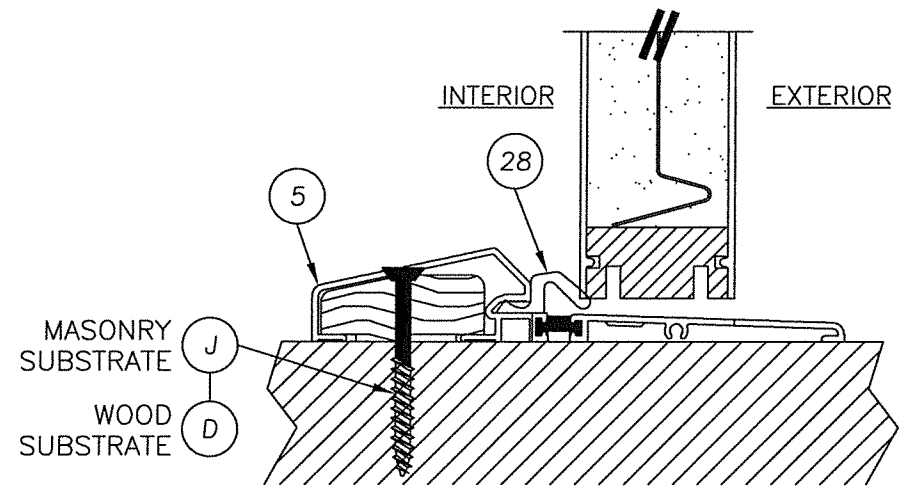
NO.	DATE	REVISIONS
2	5/06/20	UPDATE TO 2018 IBC/IRC CODE
1	7/16/15	ADDED GENERAL NOTE 5.

DATE: 07/17/12
 SCALE: N.T.S.
 DWG. BY: JK
 CHK. BY: LFS
 DRAWING NO.: TX-4186
 SHEET 7 OF 12

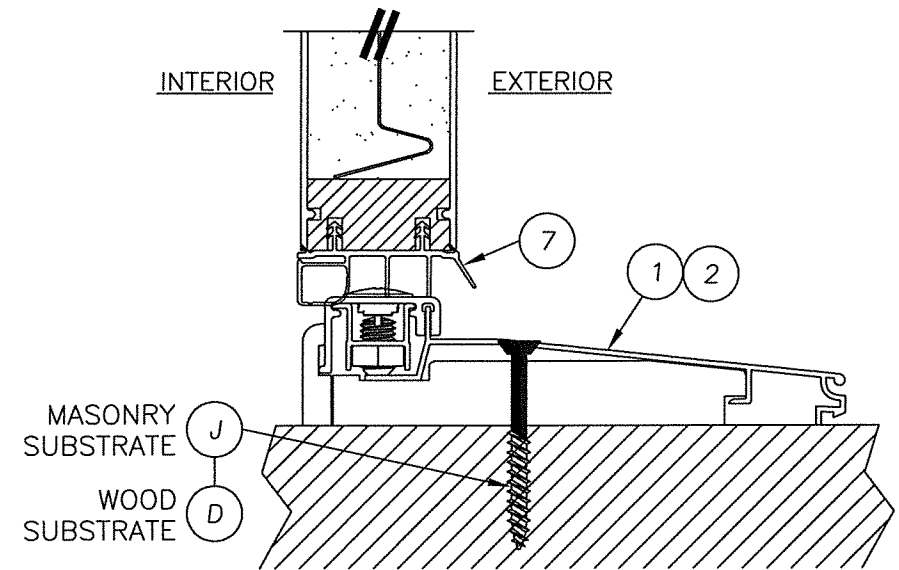
R:\Clients\Therma Tru PERMANENT\B - Texas Dept of Ins\TDI - DR 276 - 68 Opaque FG Imp IS - OS Sgls Dbls w-wo Non-Imp SL\C - Drawings\Current\TX-4184-89.dwg, FOX8



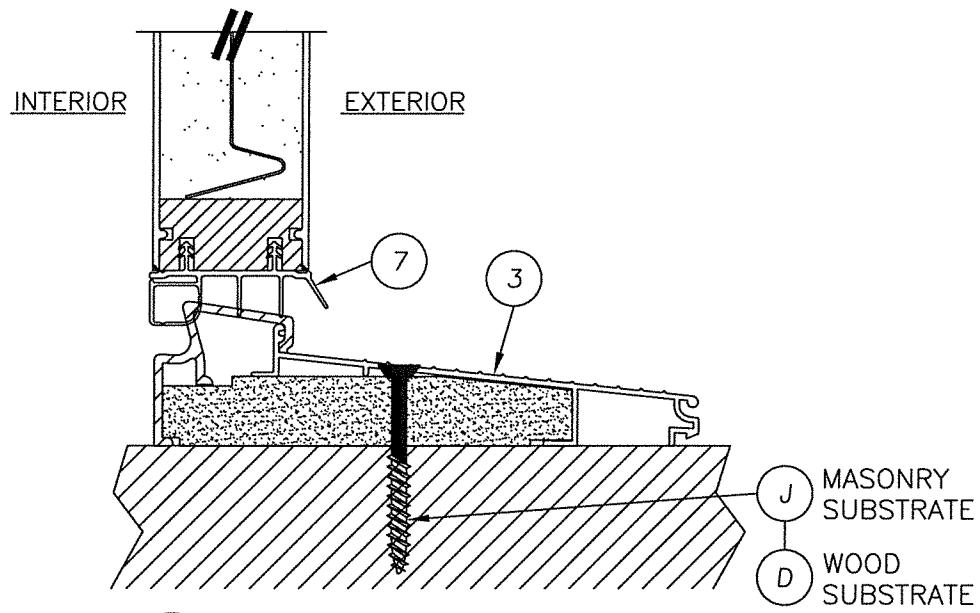
1 VERTICAL CROSS SECTION
 8 INSWING SHOWN - OUTSWING ALSO APPROVED
 SMOOTH STAR PANEL SHOWN
 SEE DOOR PANEL DETAILS FOR
 OPTIONAL PANEL TYPES



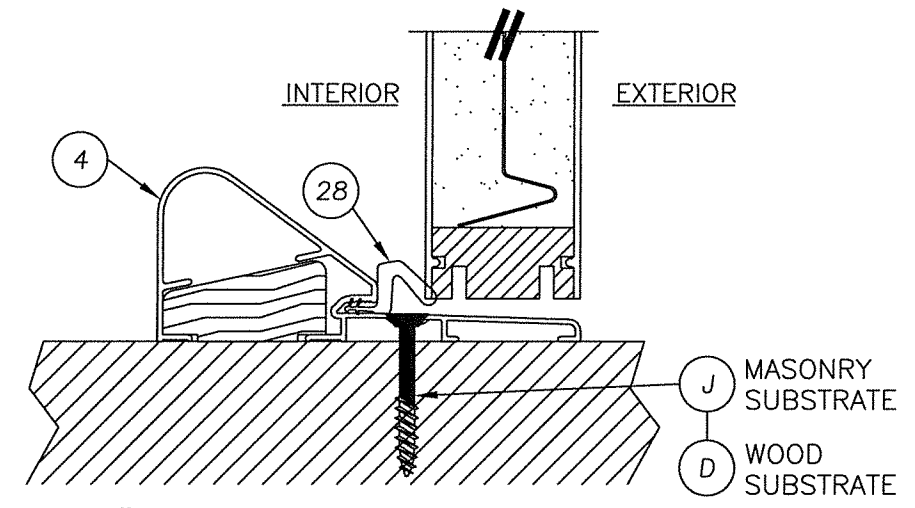
2 VERTICAL CROSS SECTION
 8 @ THRESHOLD
 SMOOTH STAR PANEL SHOWN
 SEE DOOR PANEL DETAILS FOR
 OPTIONAL PANEL TYPES



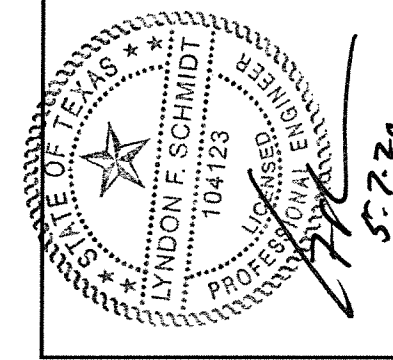
3 VERTICAL CROSS SECTION
 8 @ THRESHOLD
 SMOOTH STAR PANEL SHOWN
 SEE DOOR PANEL DETAILS FOR
 OPTIONAL PANEL TYPES



4 VERTICAL CROSS SECTION
 8 @ THRESHOLD
 SMOOTH STAR PANEL SHOWN
 SEE DOOR PANEL DETAILS FOR
 OPTIONAL PANEL TYPES



5 VERTICAL CROSS SECTION
 8 @ THRESHOLD
 SMOOTH STAR PANEL SHOWN
 SEE DOOR PANEL DETAILS FOR
 OPTIONAL PANEL TYPES



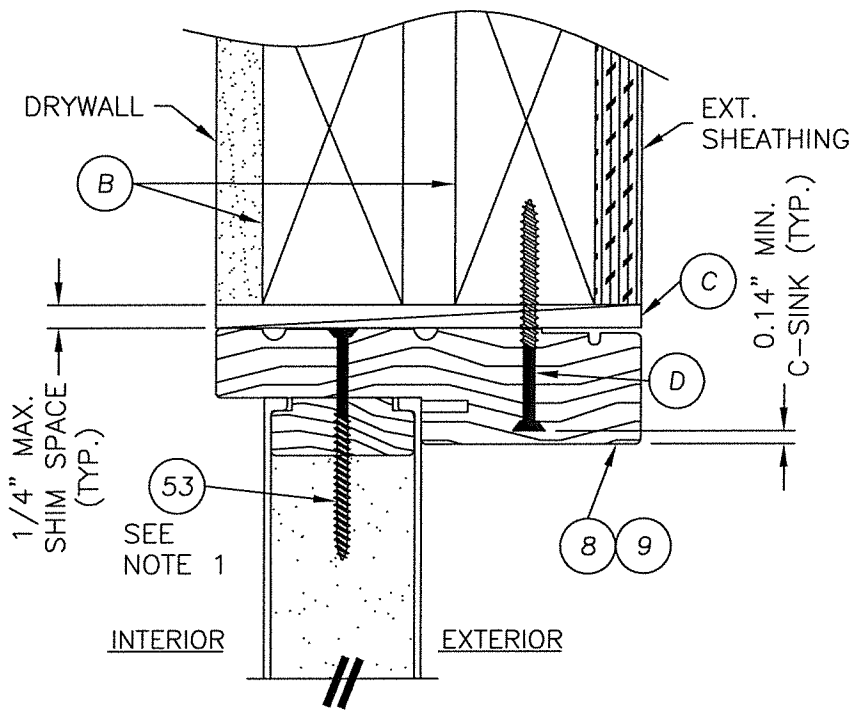
Documents Prepared By: Lyndon F. Schmidt, P.E.
 TEXAS P.E. #104123
 R.W. BUILDING CONSULTANTS, INC.
 P.O. Box 230 Valrico FL 33595
 Phone No.: 813.659.9197
 TEXAS BOARD OF PROFESSIONAL ENGINEERS
 CERTIFICATE OF REGISTRATION # F-11852

PRODUCT: SINGLE OPAQUE
 FIBERGLASS DOOR W/SIDELITE
 "IMPACT" INSWING / OUTSWING
 PART OR ASSEMBLY:
 VERTICAL CROSS SECTIONS

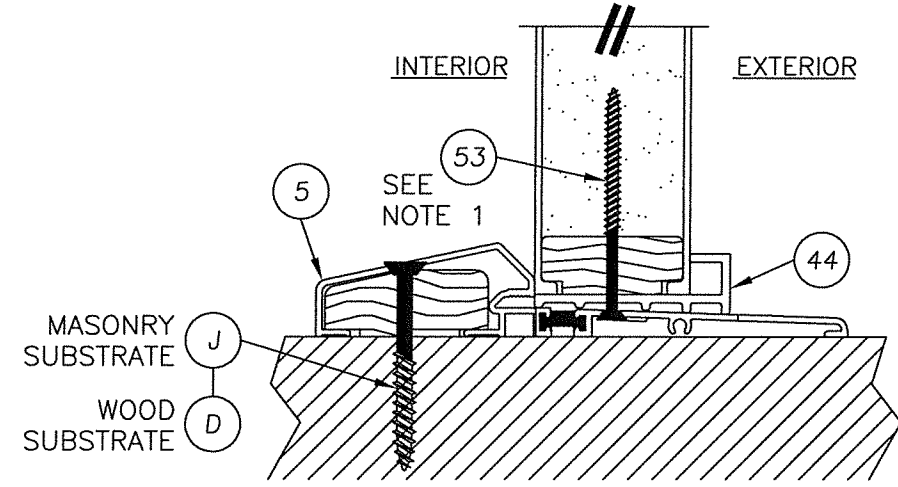
NO.	DATE	BY	REVISIONS
2	5/06/20	LFS	UPDATE TO 2018 IBC/IRC CODE
1	7/16/15	LFS	ADDED GENERAL NOTE 5.

DATE: 07/17/12
 SCALE: N.T.S.
 DWG. BY: JK
 CHK. BY: LFS
 DRAWING NO.: TX-4186
 SHEET 8 OF 12

R:\Clients\Therma Tru PERMANENT\B - Texas Dept of Ins\TDI - DR 276 - 68 Opaque FG Imp IS - OS Sgls Dbls w-wo Non-Imp SL\C - Drawings\Current\TX-4184-89.dwg, FOX9

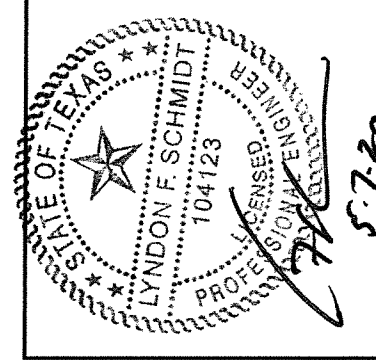


NOTE:
1. SIDELITE ASSEMBLY SCREWS LOCATED 4.25\"/>



1 VERTICAL CROSS SECTION
9 INSWING SHOWN - OUTSWING ALSO APPROVED

2 VERTICAL CROSS SECTION
9

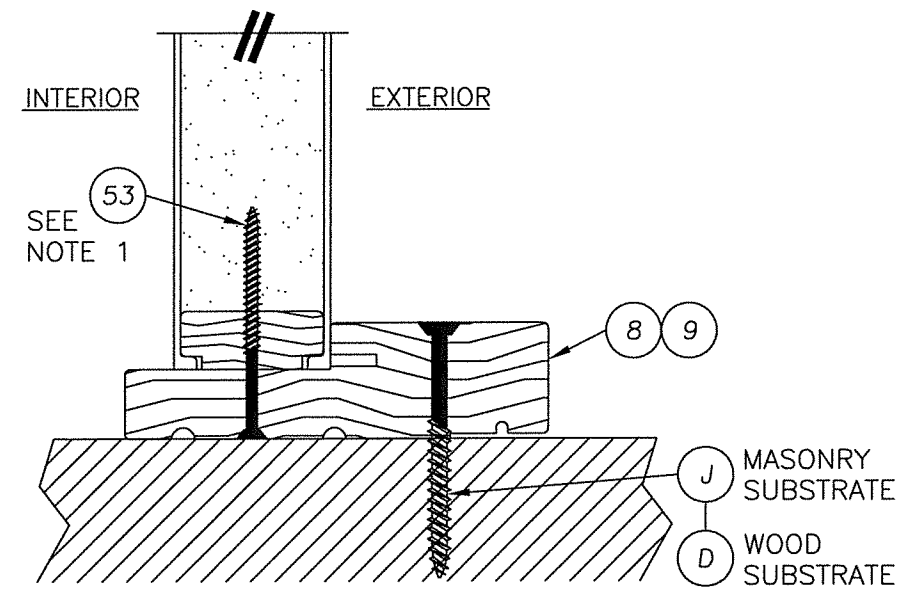


Documents Prepared By: Lyndon F. Schmidt, P.E.
TEXAS P.E. #104123
RW BUILDING CONSULTANTS, INC.
P.O. Box 230 Valrico FL 33595
Phone No.: 813.659.9197
TEXAS BOARD OF PROFESSIONAL ENGINEERS
CERTIFICATE OF REGISTRATION # F-11852

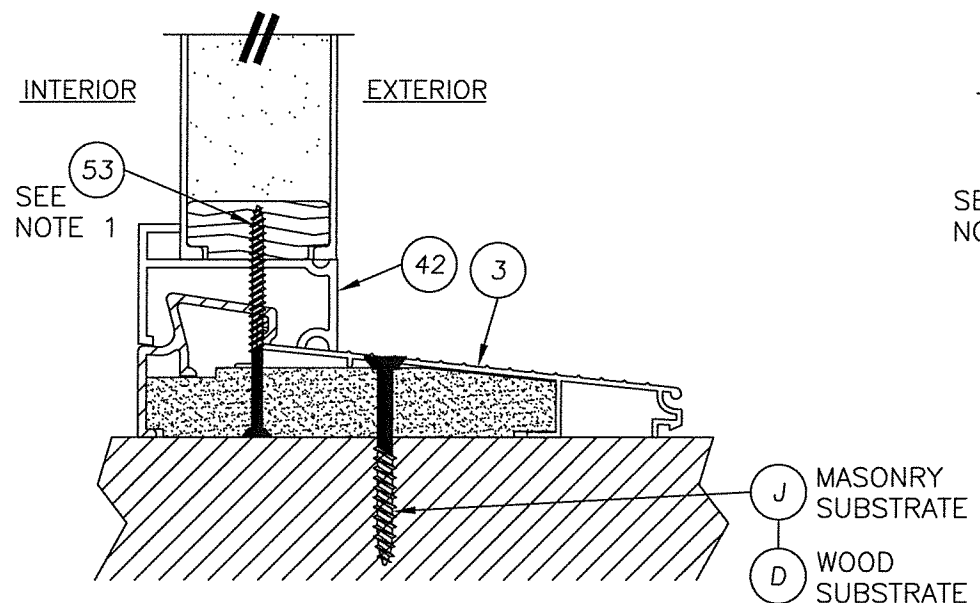
PRODUCT: SINGLE OPAQUE FIBERGLASS DOOR W/SIDELITE "IMPACT" INSWING / OUTSWING PART OR ASSEMBLY: VERTICAL CROSS SECTIONS

NO.	DATE	REVISIONS
2	5/06/20	UPDATE TO 2018 IBC/IRC CODE
1	7/16/15	ADDED GENERAL NOTE 5.

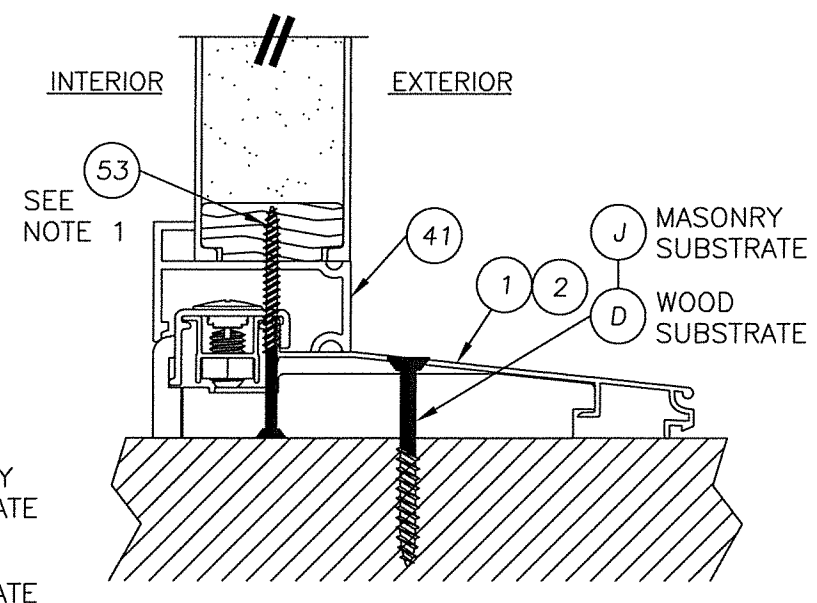
DATE: 07/17/12
SCALE: N.T.S.
DWG. BY: JK
CHK. BY: LFS
DRAWING NO.: TX-4186
SHEET 9 OF 12



3 VERTICAL CROSS SECTION
9



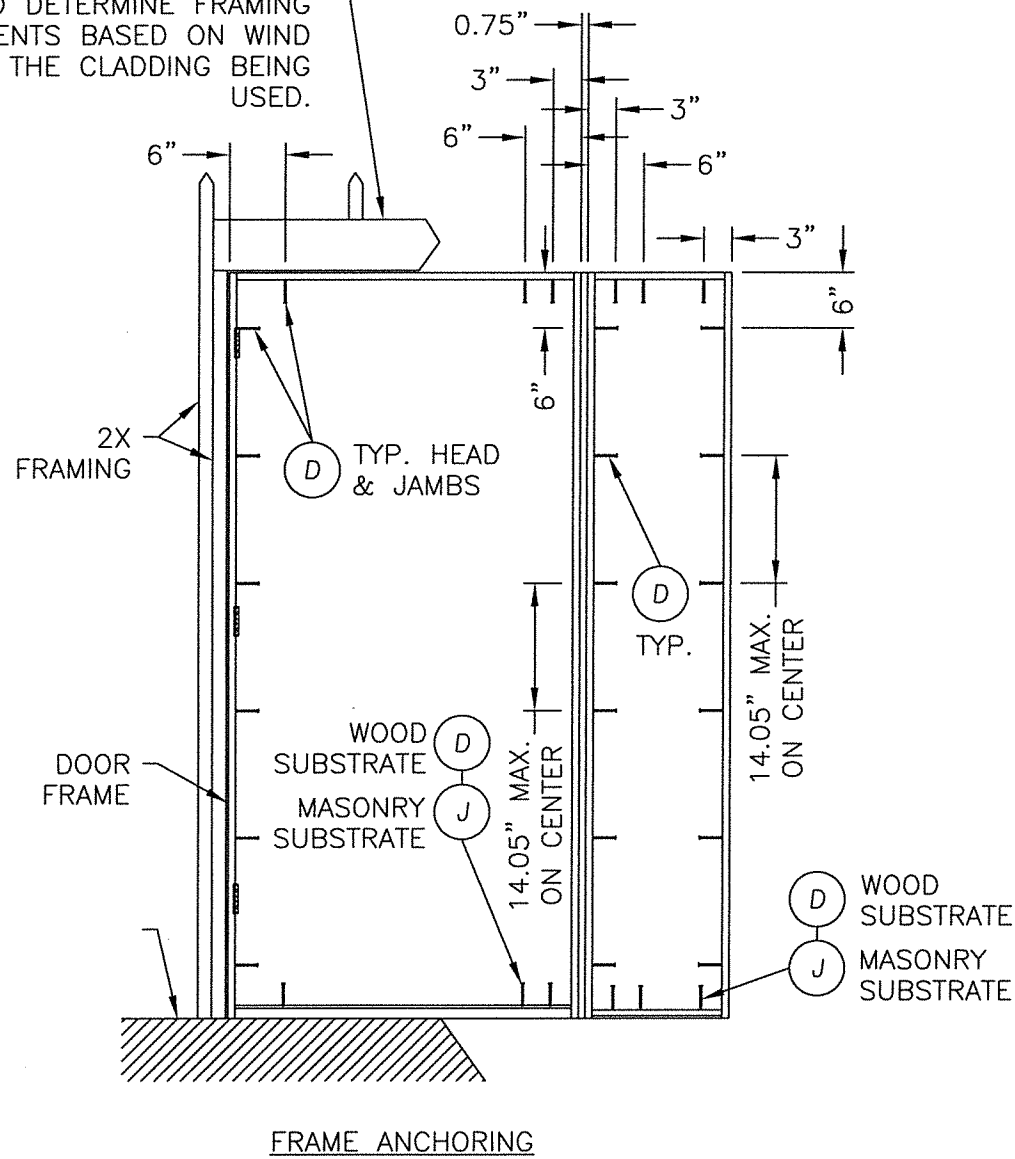
4 VERTICAL CROSS SECTION
9



5 VERTICAL CROSS SECTION
9

© 2012 R.W. BUILDING CONSULTANTS INC.

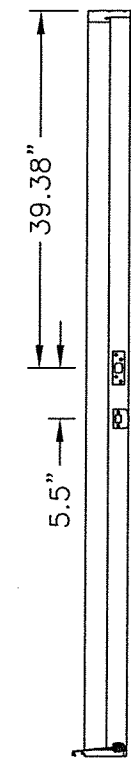
THE ENGINEER OR ARCHITECT OF RECORD TO DETERMINE FRAMING REQUIREMENTS BASED ON WIND LOADS AND THE CLADDING BEING USED.



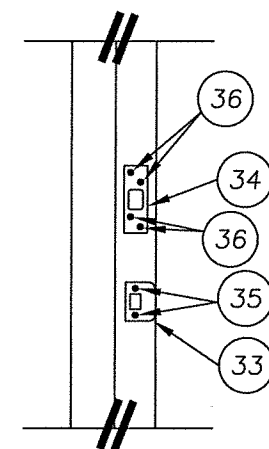
CONCRETE ANCHOR NOTES:

1. Concrete anchor locations at the corners may be adjusted to maintain the min. edge distance to mortar joints.
2. Concrete anchor locations noted as "MAX. ON CENTER" must be adjusted to maintain the min. edge distance to mortar joints, additional concrete anchors may be required to ensure the "MAX. ON CENTER" dimension are not exceeded.
3. Concrete anchor table:

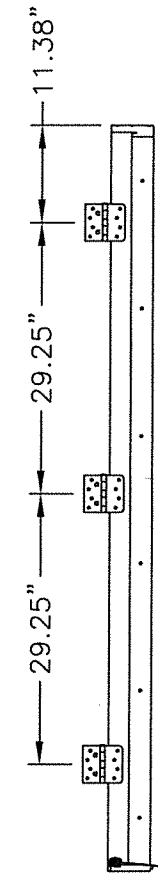
ANCHOR TYPE	ANCHOR SIZE	MIN. EMBEDMENT	MIN. CLEARANCE TO MASONRY EDGE	MIN. CLEARANCE TO ADJACENT ANCHOR
ITW TAPCON®	1/4"	1-3/4"	2-1/2"	3"
ELCO ULTRACON®	1/4"	1-3/4"	1"	3"



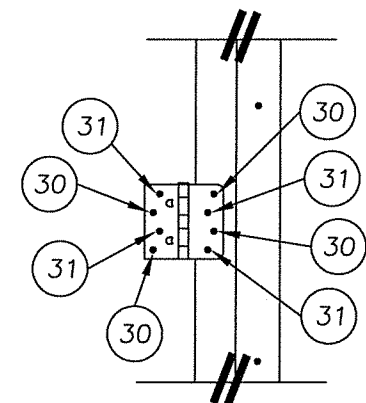
STRIKE PLATE LOCATIONS



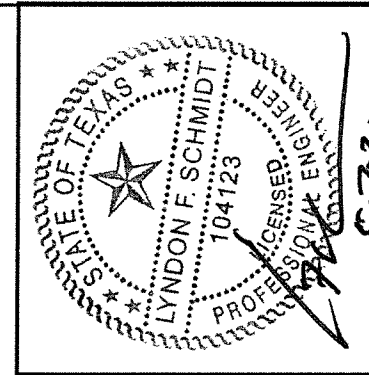
STRIKE PLATE DETAIL



HINGE LOCATIONS



HINGE DETAIL



Documents Prepared By: Lyndon F. Schmidt, P.E.
TEXAS P.E. #104123

RW BUILDING CONSULTANTS, INC.
P.O. Box 230 Vairico FL, 33595
Phone No.: 813.659.9197

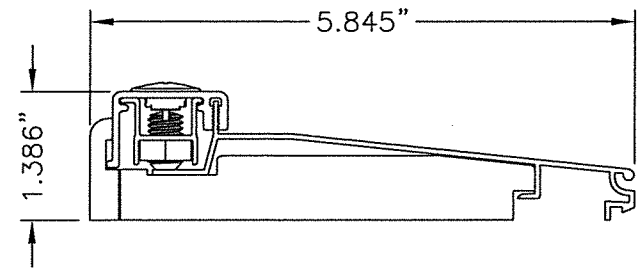
© 2012 R.W. BUILDING CONSULTANTS INC.

PRODUCT: SINGLE OPAQUE FIBERGLASS DOOR W/SIDELITE "IMPACT" INSWING / OUTSWING PART OR ASSEMBLY: FRAME ANCHORING

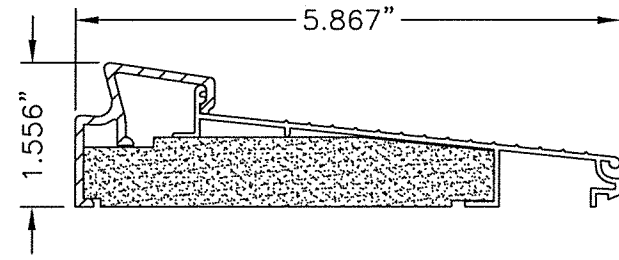
NO.	DATE	REVISIONS
2	5/06/20	UPDATE TO 2018 IBC/IRC CODE
1	7/16/15	ADDED GENERAL NOTE 5.

DATE: 07/17/12
SCALE: N.T.S.
DWG. BY: JK
CHK. BY: LFS
DRAWING NO.: TX-4186
SHEET 10 OF 12

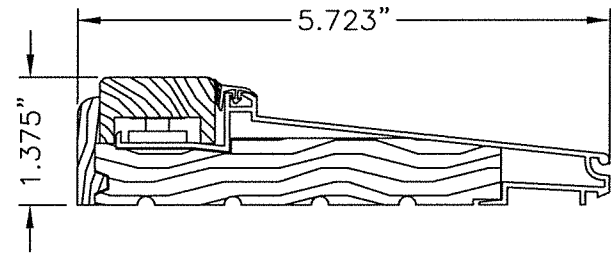
R:\Clients\Therma Tru PERMANENT\B - Texas Dept of Ins\TDI - DR 276 - 68 Opaque FG Imp IS - OS Sgls Dbls w-wo Non-Imp SL\C - Drawings\Current\TX-4184-89.dwg, FOX11



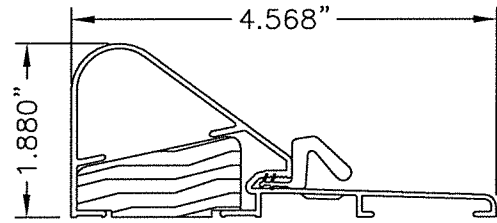
2 THRESHOLD
INSWING ADJUSTABLE



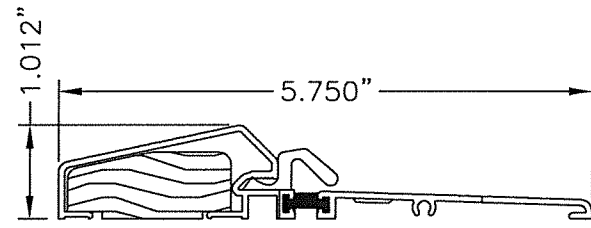
3 THRESHOLD
INSWING SELF-ADJUST



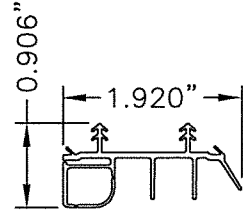
1 THRESHOLD
INSWING ADJUSTABLE



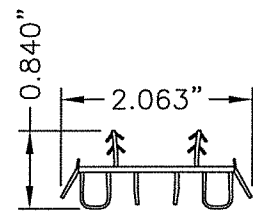
4 THRESHOLD
OUTSWING COASTAL



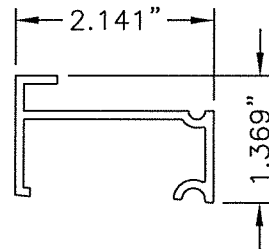
5 THRESHOLD
OUTSWING STANDARD



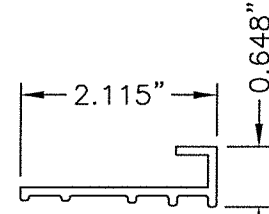
7 SWEEP



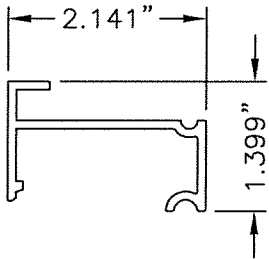
52 SWEEP



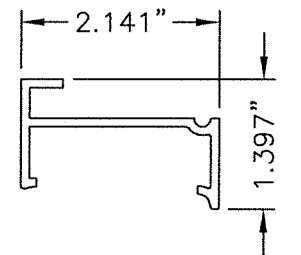
42 INSWING SIDELITE
SPACER



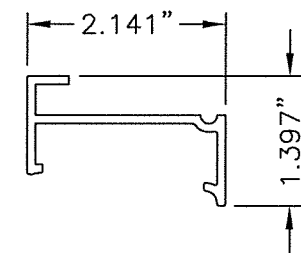
44 OUTSWING SIDELITE
SPACER



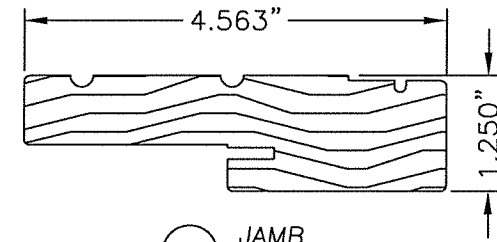
41 INSWING SIDELITE
SPACER



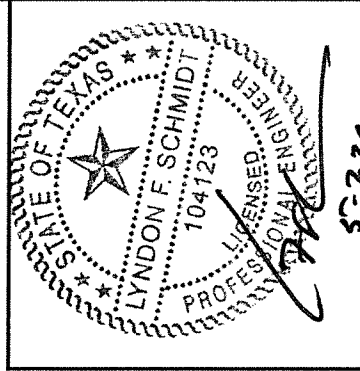
40 INSWING SIDELITE
SPACER



43 INSWING SIDELITE
SPACER



8 JAMB



Documents Prepared By: Lyndon F. Schmidt, P.E.
TEXAS P.E. #104123

R.W. BUILDING CONSULTANTS, INC.
P.O. Box 230 Valrico FL 33595
Phone No.: 813.659.9197

PRODUCT: SINGLE OPAQUE
FIBERGLASS DOOR W/SIDELITE
"IMPACT" INSWING / OUTSWING
PART OR ASSEMBLY:
COMPONENTS

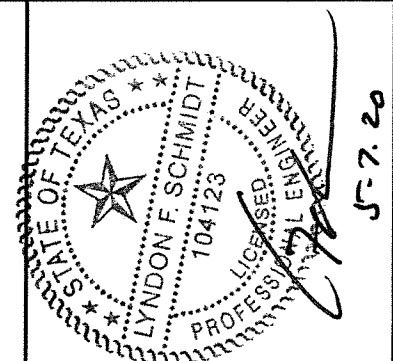
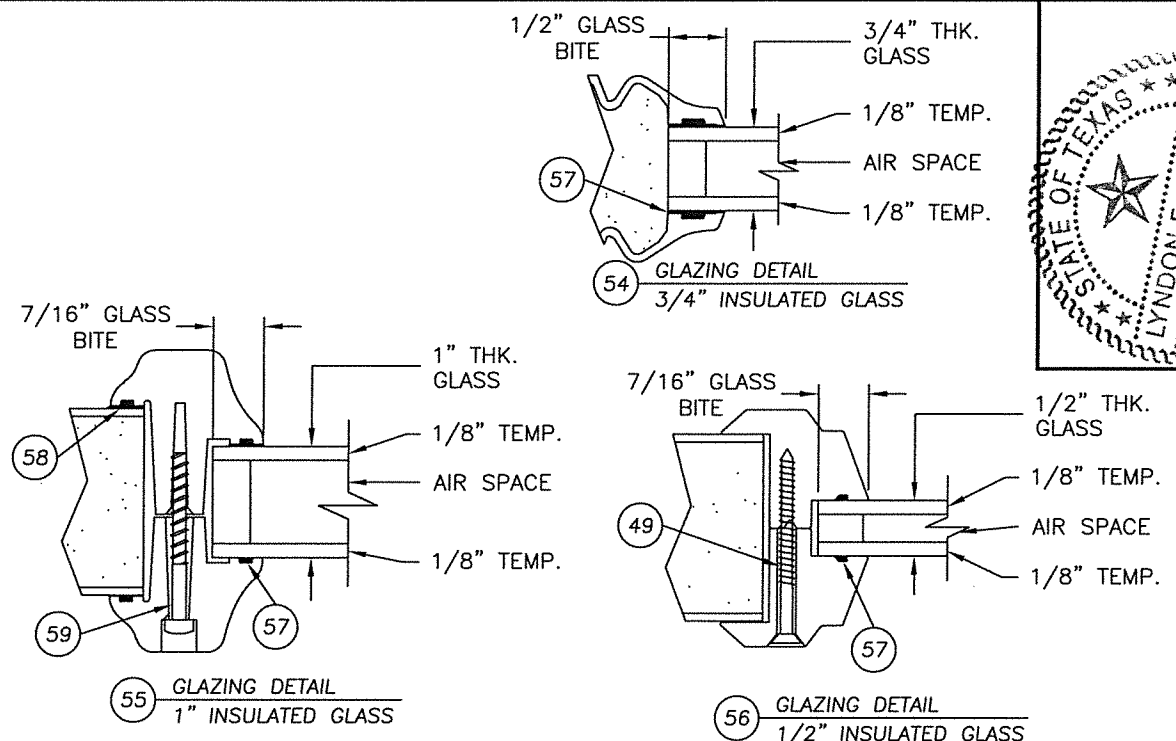
REVISIONS	
NO.	DATE
2	5/06/20
1	7/16/15

DATE: 07/17/12
SCALE: N.T.S.
DWG. BY: JK
CHK. BY: LFS
DRAWING NO.: TX-4186
SHEET 11 OF 12

R:\Clients\Therma Tru PERMANENT\B - Texas Dept of Ins\TDI - DR 276 - 68 Opaque FG Imp IS - OS Sgls Dbls w-wo Non-Imp SL/C - Drawings\Current\TX-4184-89.dwg, FOX12

BILL OF MATERIALS		
ITEM	DESCRIPTION	MATERIAL
B	2X FRAMING (G >= 0.42)	WOOD
C	1/4" MAX. SHIM SPACE	WOOD
D	#10 X 2-1/2" PFH WOOD SCREW	STEEL
G	KWIKSET 200 SERIES PASSAGE LOCK	STEEL
H	KWIKSET 600 SERIES DEADBOLT	STEEL
J	1/4" ELCO OR ITW CONCRETE SCREW (1-3/4" MIN. EMB.)	STEEL
O	1X MULLION (G >= 0.42)	WOOD
1	INSWING ADJUSTABLE THRESHOLD (IS300AJ)	ALUM./WOOD
2	INSWING THRESHOLD (IS300HP5)	-
3	INSWING SELF ADJUST THERMAL BREAK THRESHOLD (ISP30M)	ALUM./COMP.
4	OUTSWING COASTAL THRESHOLD	ALUM./WOOD
7	DOOR BOTTOM SWEEP	VINYL
8	JAMB (PINE)	WOOD
9	JAMB (OAK)	WOOD
10	HINGE STILE (SMOOTH STAR)	WOOD
11	LOCK STILE (SMOOTH STAR)	LVL/WOOD
12	TOP RAIL (SMOOTH STAR)	PVC
13	BOTTOM RAIL (SMOOTH STAR)	PVC
14	PANEL REINFORCEMENT 0.023" THK. (SMOOTH STAR)	STEEL
15	DOOR SKIN 0.070" THK. (SMOOTH STAR) Fy = 6,000 PSI MIN.	FIBERGLASS
16	HINGE STILE (CLASSIC CRAFT)	WOOD/LVL
17	LOCK STILE (CLASSIC CRAFT)	WOOD/LVL
18	TOP RAIL (CLASSIC CRAFT)	PVC
19	BOTTOM RAIL (CLASSIC CRAFT)	PVC
20	PANEL REINFORCEMENT 0.023" THK. (CLASSIC CRAFT)	STEEL
21	DOOR SKIN 0.090" THK. (CLASSIC CRAFT) Fy = 6,000 PSI MIN.	FIBERGLASS
22	LOCK & HINGE STILE (CLASSIC CRAFT RUSTIC)	WOOD/LVL
23	TOP RAIL (CLASSIC CRAFT RUSTIC)	WOOD
24	BOTTOM RAIL (CLASSIC CRAFT RUSTIC)	PVC
25	PANEL REINFORCEMENT 0.023" THK. (CLASSIC CRAFT RUSTIC)	STEEL
26	DOOR SKIN 0.090" THK. (CC RUSTIC) Fy = 6,000 PSI MIN.	FIBERGLASS
27	FOAM CORE	POLYURETHANE
28	WEATHERSTRIP	FOAM
29	HINGE	STEEL
30	#10 X 2-1/2" PFH SCREW	STEEL
31	#10 X 3/4" PFH SCREW	STEEL
32	#9 X 3" PFH WOOD SCREW	STEEL
33	LATCH STRIKE PLATE	STEEL
34	SECURITY STRIKE PLATE (SINGLE DOOR ONLY)	STEEL
35	#8 X 3" PFH SCREW	STEEL
36	#8 X 3" PFH SCREW	STEEL

BILL OF MATERIALS		
ITEM	DESCRIPTION	MATERIAL
40	INSWING SIDELITE SPACER FOR ADJUSTABLE THRESHOLD (DB14AJA)	PVC
41	INSWING SIDELITE SPACER FOR HP THRESHOLD (DB14HPA)	PVC
42	INSWING SIDELITE SPACER FOR SELF ADJUST THRESHOLD (DB14)	PVC
43	INSWING SIDELITE SPACER	PVC
44	OUTSWING SIDELITE SPACER	PVC
45	SIDELITE STILES & RAILS	WOOD
46	SIDELITE SKIN 0.070" THK. (SMOOTH STAR)	FIBERGLASS
47	SIDELITE SKIN 0.090" THK. (CLASSIC CRAFT)	FIBERGLASS
48	SIDELITE SKIN 0.070" THK. (FIBER CLASSIC)	FIBERGLASS
49	#6 X 1-3/4" PFH SCREW (LITE FRAME)	STEEL
50	LITE FRAME FIBER CLASSIC	PVC
51	LITE FRAME SMOOTH STAR	PVC
52	DOOR BOTTOM SWEEP	VINYL
53	#9 X 2-1/2" PFH WOOD SCREW	STEEL
54	3/4" INSULATED GLASS 1/8" TEMPERED - AIR - 1/8" TEMPERED	GLASS
55	1" INSULATED GLASS 1/8" TEMPERED - AIR - 1/8" TEMPERED	GLASS
56	1/2" INSULATED GLASS 1/8" TEMPERED - AIR - 1/8" TEMPERED	GLASS
57	GLAZING COMPOUND	SILICONE
58	SEALANT	SILICONE
59	#9 X 1" PPH SCREW (LITE FRAME)	STEEL
60	HINGE STILE (FIBER CLASSIC)	WOOD
61	LOCK STILE (FIBER CLASSIC)	LVL/WOOD
62	TOP RAIL (FIBER CLASSIC)	PVC
63	BOTTOM RAIL (FIBER CLASSIC)	PVC
64	PANEL REINFORCEMENT 0.023" THK. (FIBER CLASSIC)	STEEL
65	DOOR SKIN 0.072" THK. (FIBER CLASSIC) Fy = 6,000 PSI MIN.	FIBERGLASS



Documents Prepared By: Lyndon F. Schmidt, P.E.
TEXAS P.E. #104123

RW BUILDING CONSULTANTS, INC.
P.O. Box 230 Valrico FL 33595
Phone No.: 813.659.9197

TEXAS BOARD OF PROFESSIONAL ENGINEERS
CERTIFICATE OF REGISTRATION # F-11852

PRODUCT:	SINGLE OPAQUE FIBERGLASS DOOR W/SIDELITE "IMPACT" INSWING / OUTSWING	
PART OR ASSEMBLY:	BILL OF MATERIALS & GLAZING DETAILS	
NO.	DATE	REVISIONS
2	5/06/20	UPDATE TO 2018 IBC/IRC CODE
1	7/16/15	ADDED GENERAL NOTE 5.
LFS		
LFS		
BY		
DATE: 07/17/12		
SCALE: N.T.S.		
DWG. BY: JK		
CHK. BY: LFS		
DRAWING NO.: TX-4186		
SHEET 12 OF 12		

© 2012 R.W. BUILDING CONSULTANTS INC.