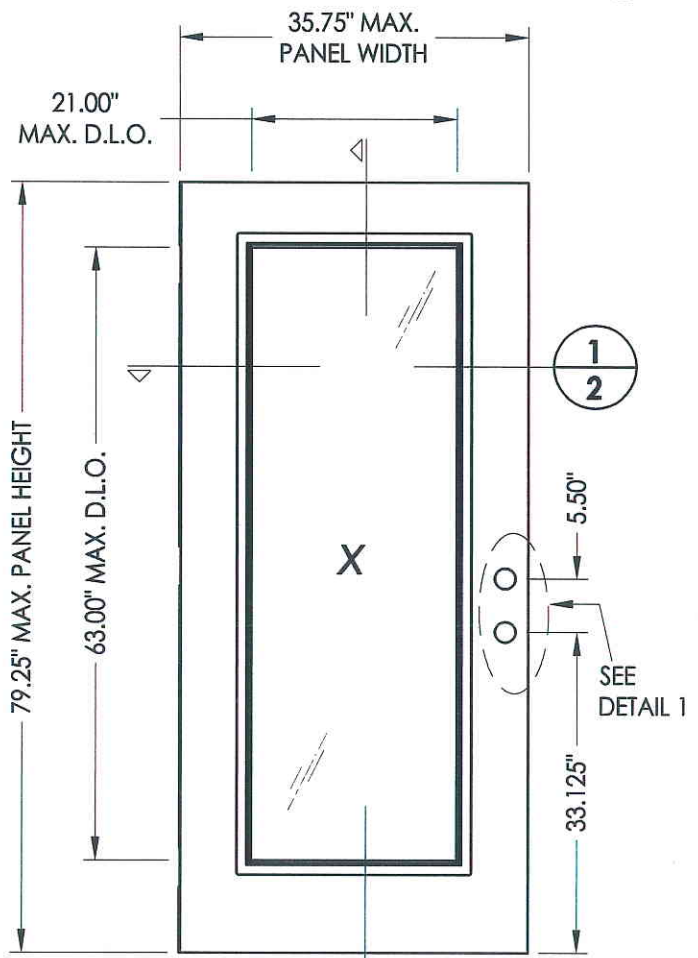
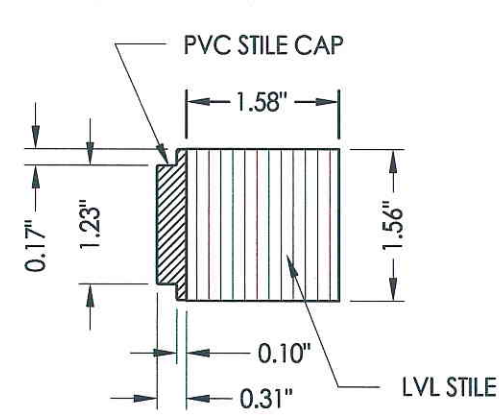


1
2 HORIZONTAL CROSS SECTION

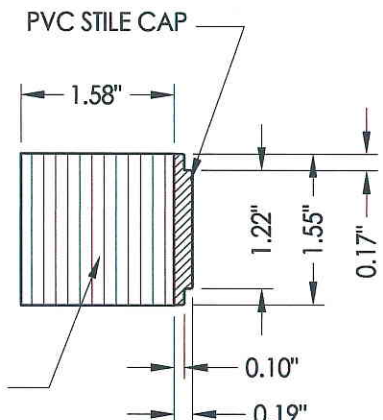


7 GLAZED DOOR PANEL
Fiberglass

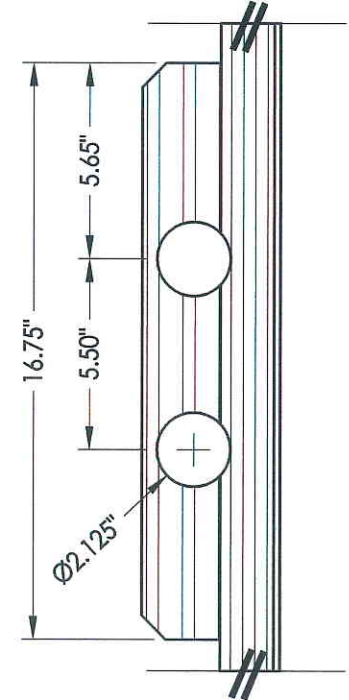
FIBERGLASS DOOR SKIN: MIN. 0.079" THK.
FOAM CORE MATERIAL: POLYURETHANE



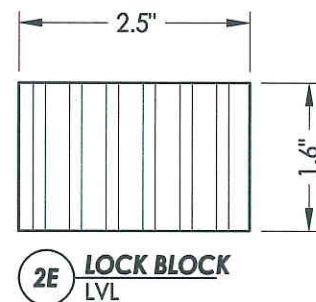
2C HINGE STILE
PVC/LVL



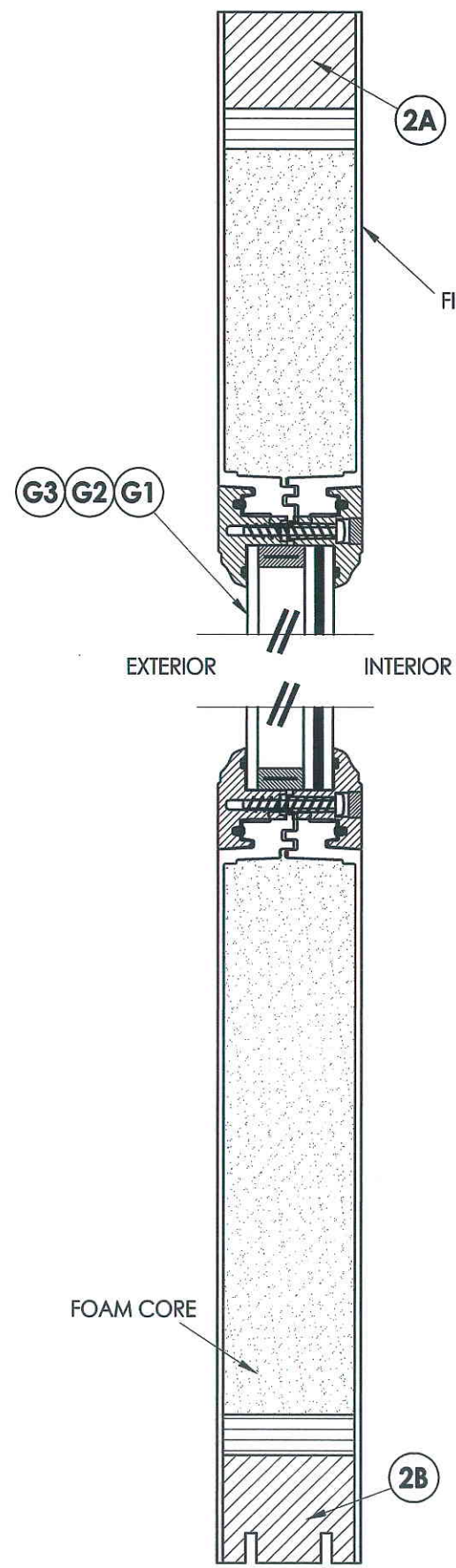
2D LATCH STILE
PVC/LVL



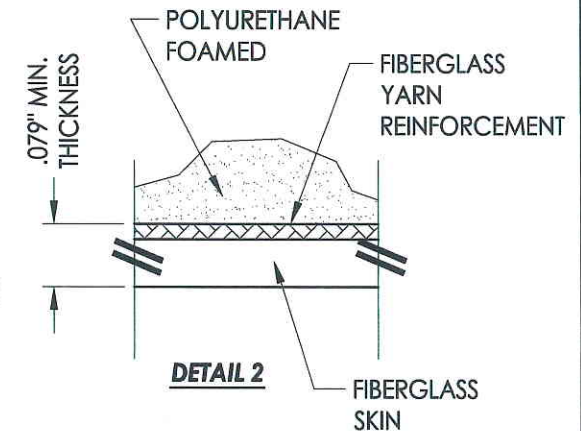
DETAIL 1



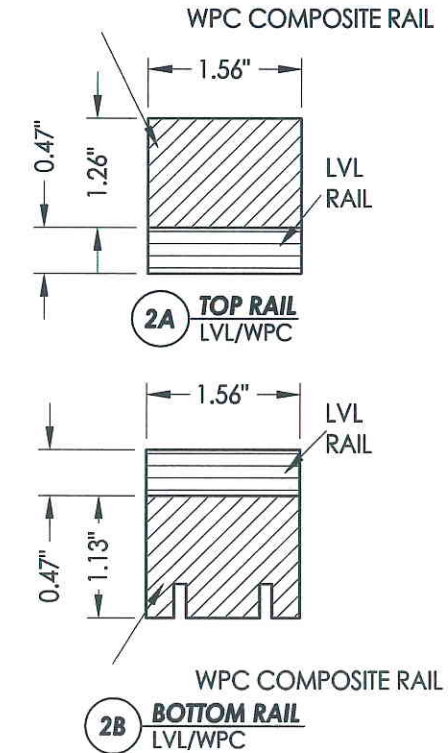
2E LOCK BLOCK
LVL



2
2 VERTICAL CROSS SECTION



DETAIL 2



2A TOP RAIL
LVL/WPC

2B BOTTOM RAIL
LVL/WPC



Documents Prepared By: Lyndon F. Schmidt, P.E.
TEXAS P.E. #104123

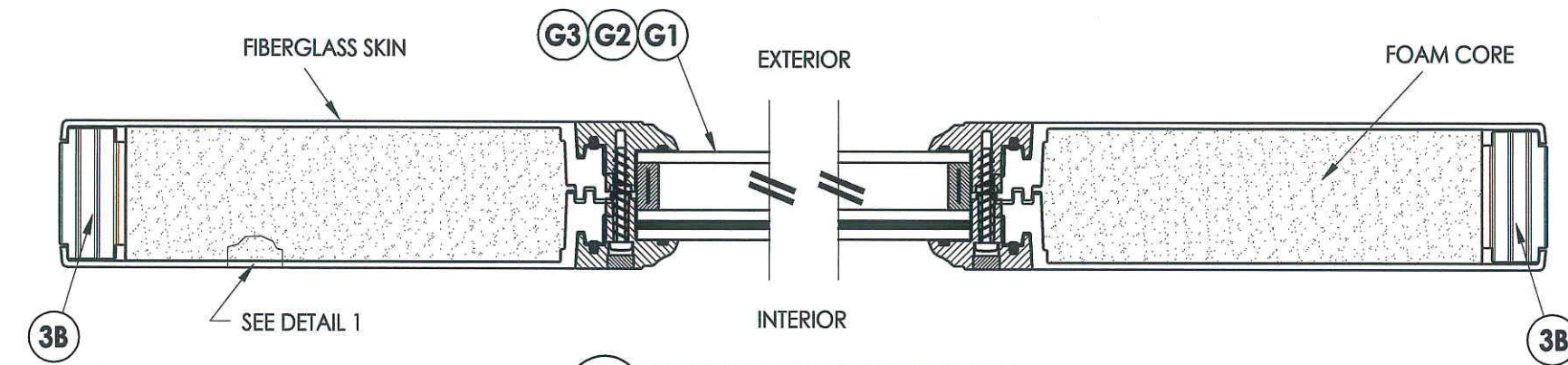
RW BUILDING CONSULTANTS, INC.
P.O. Box 230 Valrico FL, 33595
Phone No.: 813.659.9197

TEXAS BOARD OF PROFESSIONAL ENGINEERS
CERTIFICATE OF REGISTRATION # F-11852

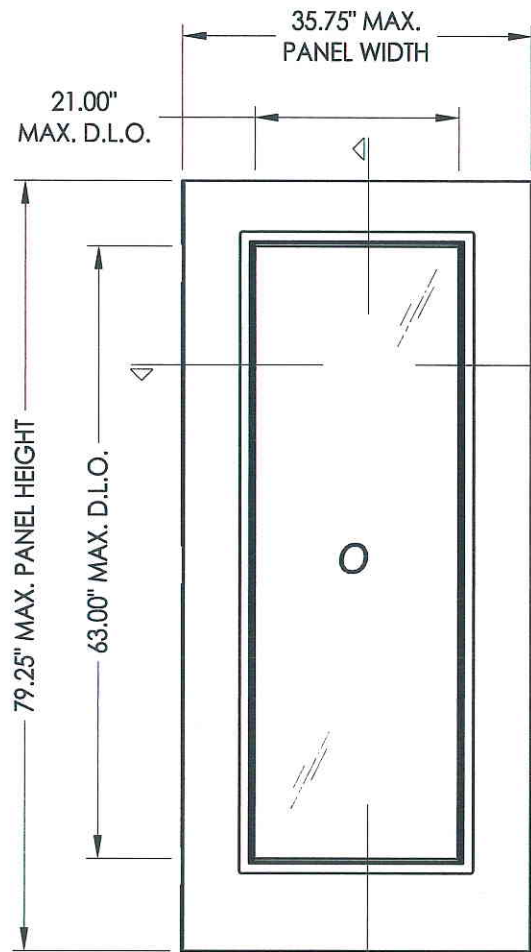
PRODUCT:	RightConcept 6'8" FLUSH-GLAZED
PART OR ASSEMBLY:	DOOR PANEL CONSTRUCTION DETAILS

NO.	DATE	BY	REVISIONS

DATE:	9/21/10
SCALE:	N.T.S.
DWG. BY:	JK
CHK. BY:	LFS
DRAWING NO.:	TX-4111
SHEET	2 OF 11



1
3 HORIZONTAL CROSS SECTION



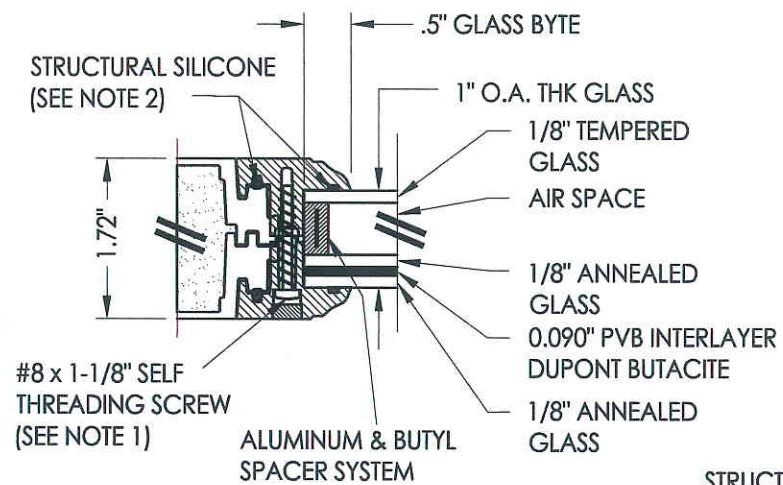
66 SIDELITE PANEL
Fiberglass

FIBERGLASS SIDELITE SKIN: MIN. 0.079\"/>

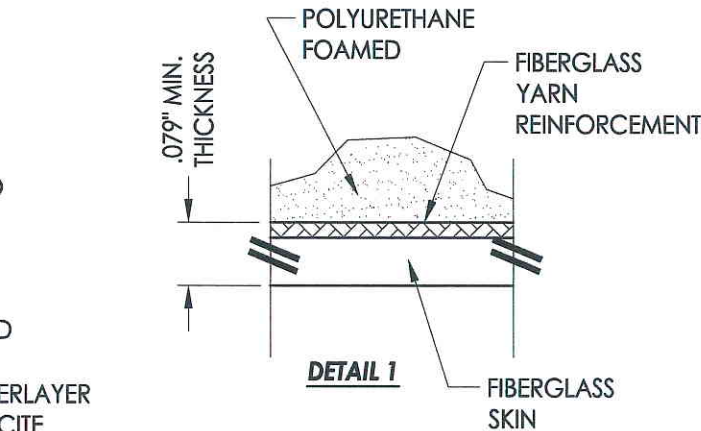
NOTES:

- Spacing for life frame screws is as follows:
Sides: 11\"/>

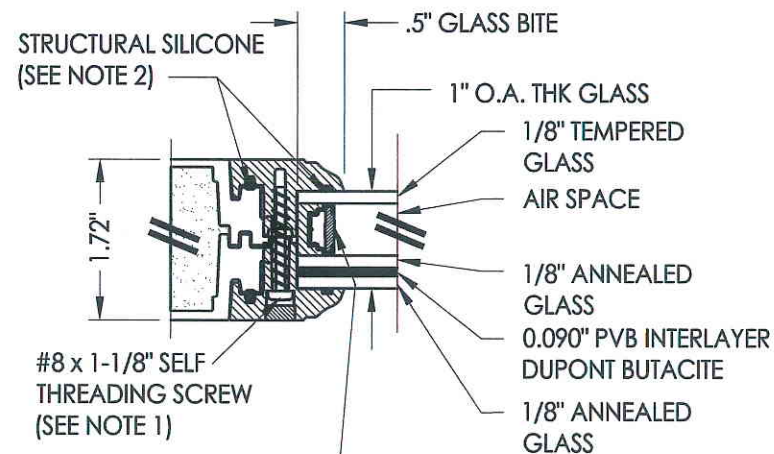
- Structural Silicone: Dow 995, Capstone or Dongyang



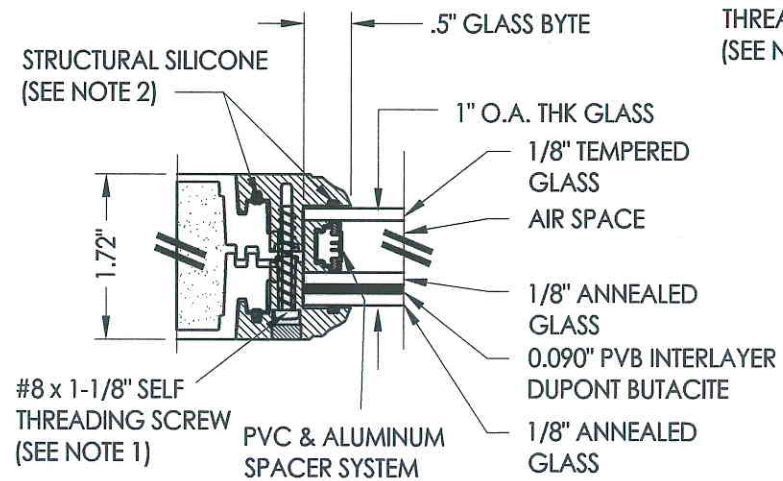
G1 GLAZING DETAIL
Flushed Glazed Lite Frame (Trinity)
PC/ASA



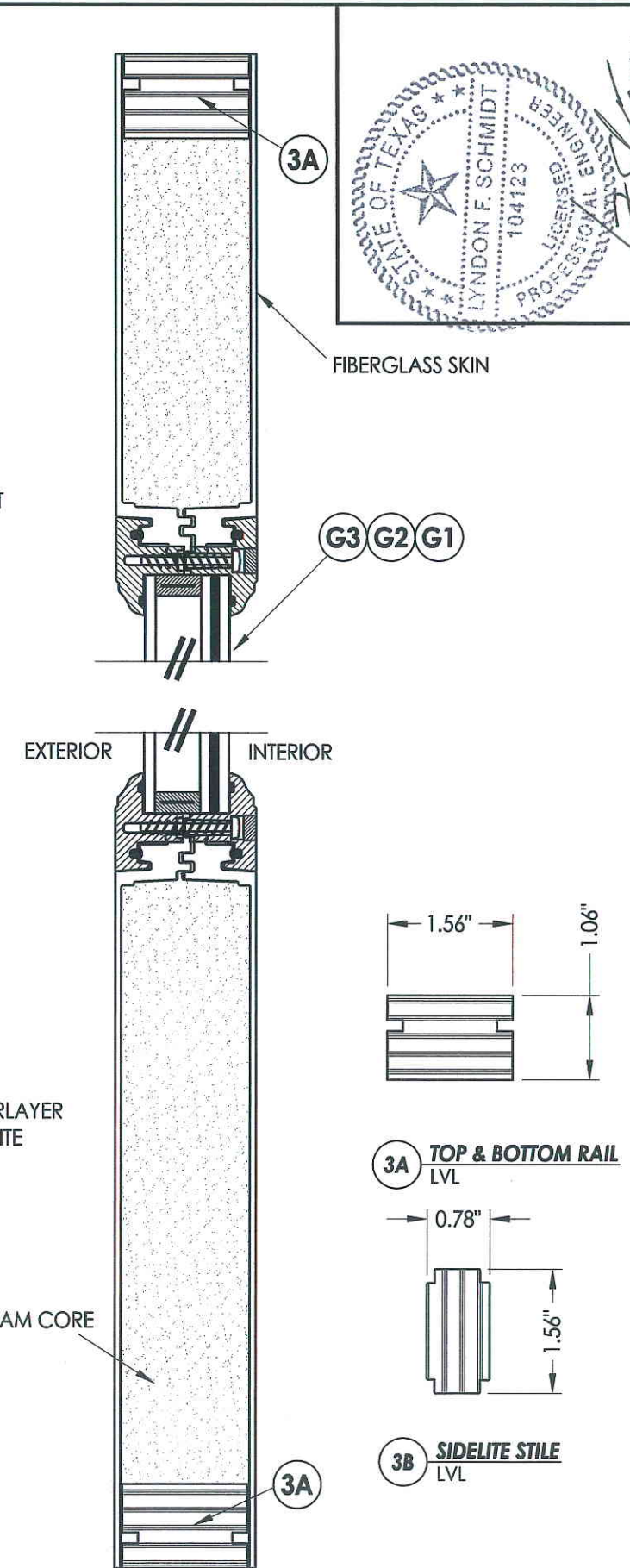
DETAIL 1



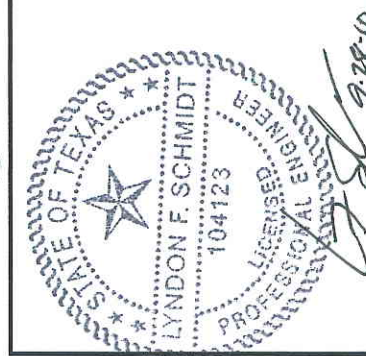
G2 GLAZING DETAIL
Flushed Glazed Lite Frame (Trinity)
PC/ASA



G3 GLAZING DETAIL
Flushed Glazed Lite Frame (Trinity)
PC/ASA



2
3 VERTICAL CROSS SECTION



Documents Prepared By: Lyndon F. Schmidt, P.E.
TEXAS P.E. #104123

RW BUILDING CONSULTANTS, INC.
P.O. Box 230 Valrico FL, 33585
Phone No.: 813.659.9197

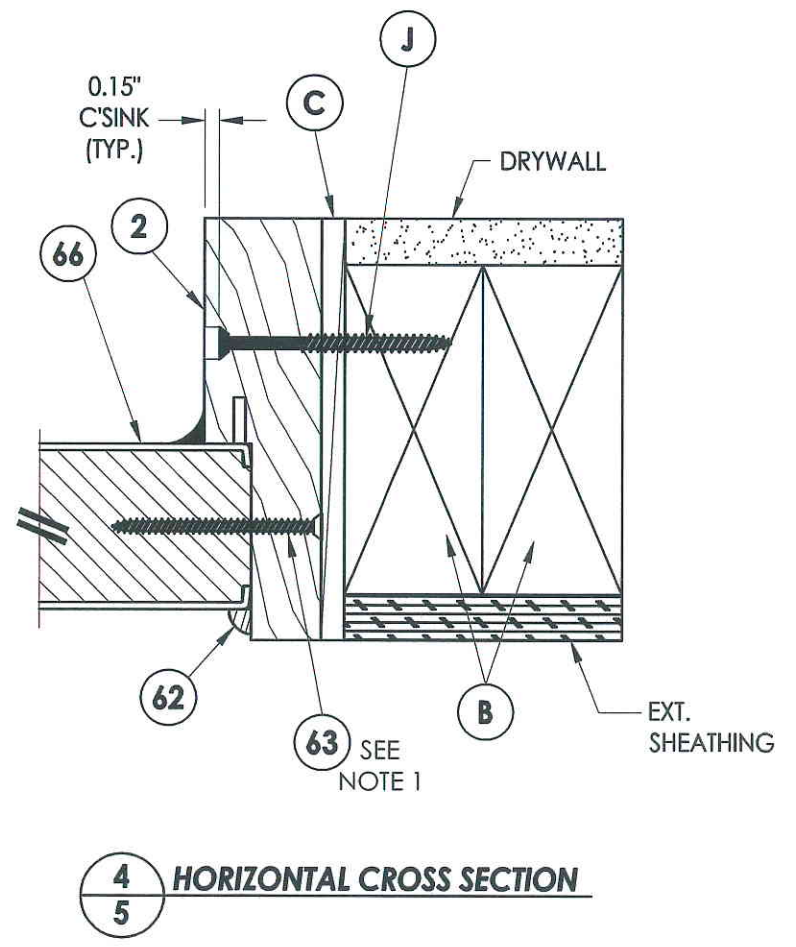
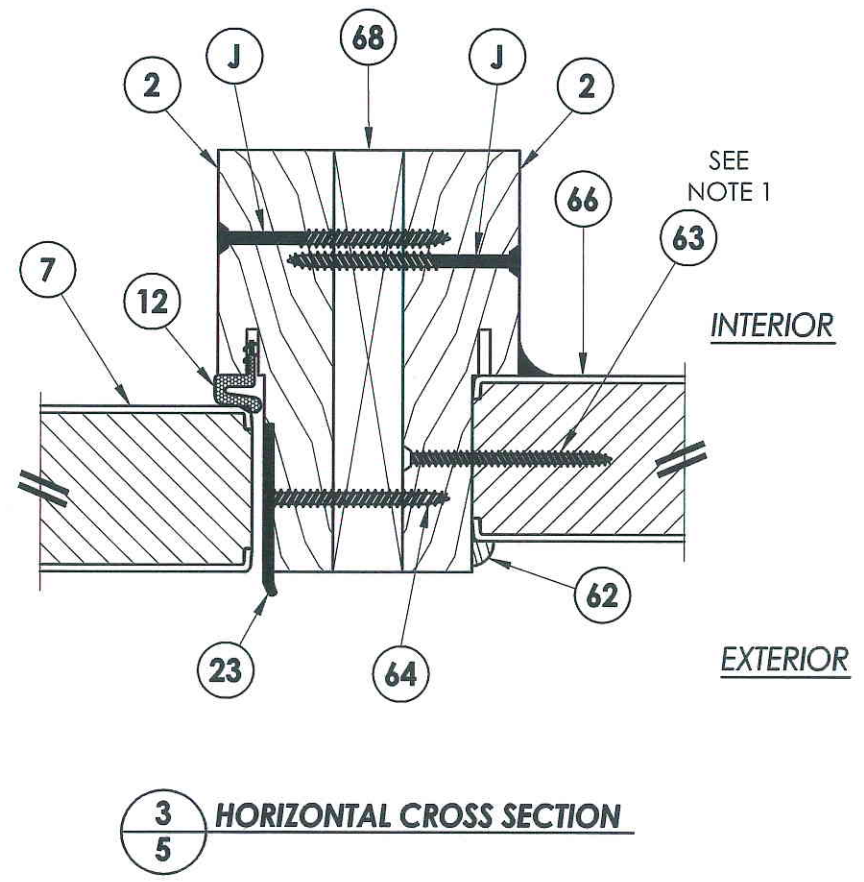
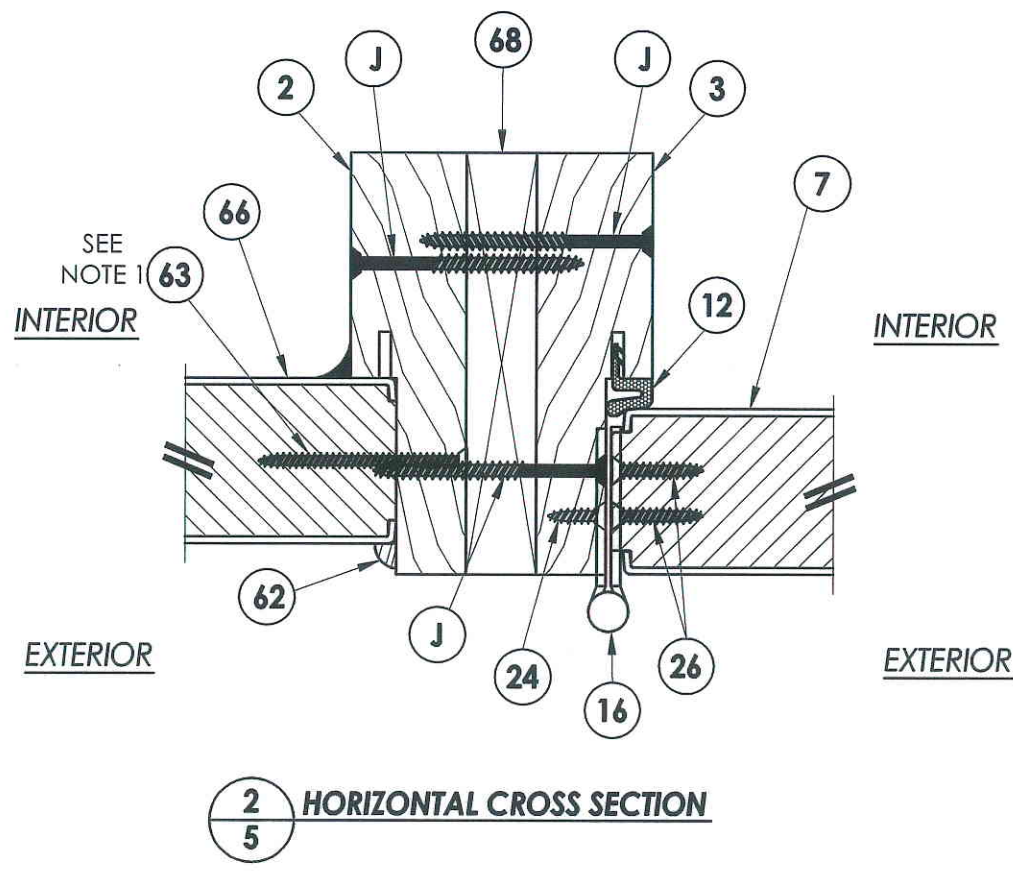
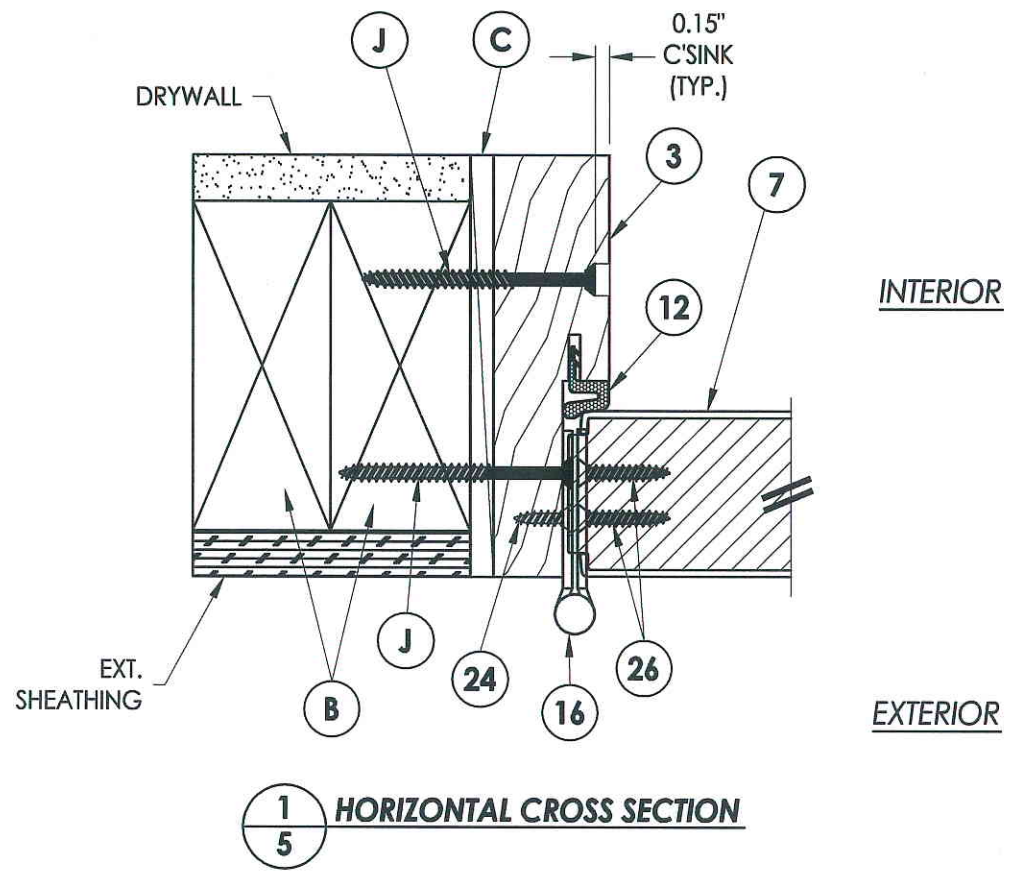
TEXAS BOARD OF PROFESSIONAL ENGINEERS
CERTIFICATE OF REGISTRATION # F-11852

PRODUCT: RightConcept
6\"/>

NO.	DATE	BY	REVISIONS

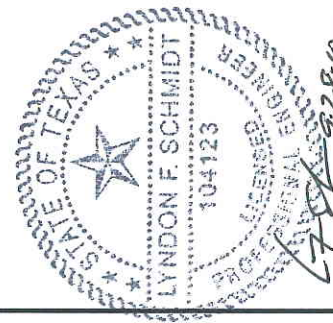
DATE: 9/21/10
SCALE: N.T.S.
DWG. BY: JK
CHK. BY: LFS
DRAWING NO.: TX-4111
SHEET 3 OF 11

R:\A - Projects\Project Folders\Proj 1001-1100\pf1098\RWBC Drawings\TX-4110.dwg, 5.2



NOTE:

1. Sidelite screws (item #63) located at 6" from each end then 3 equal spaces for a total of 4 screws.



Documents Prepared By: Lyndon F. Schmidt, P.E.
TEXAS P.E. #104123

RW BUILDING CONSULTANTS, INC.
P.O. Box 230 Valrico FL 33595
Phone No.: 813.659.9197

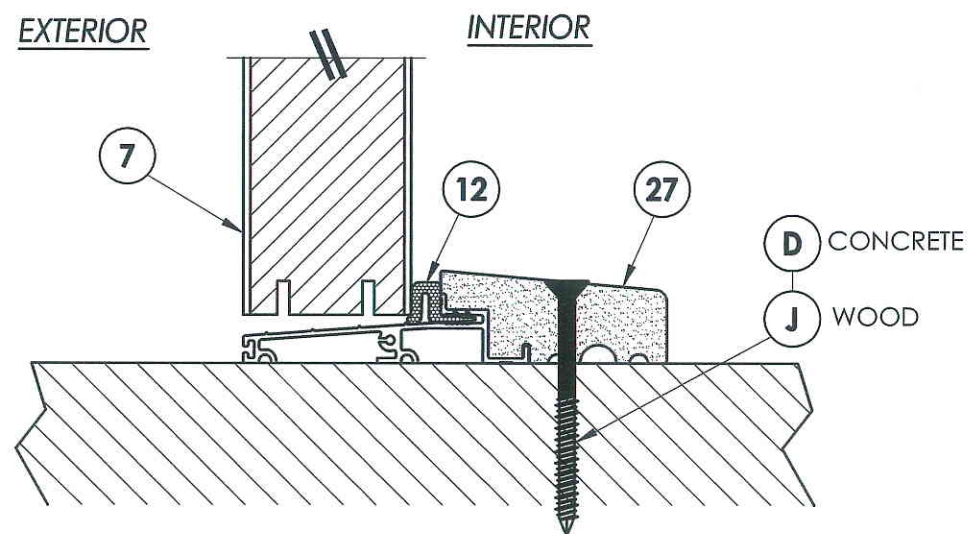
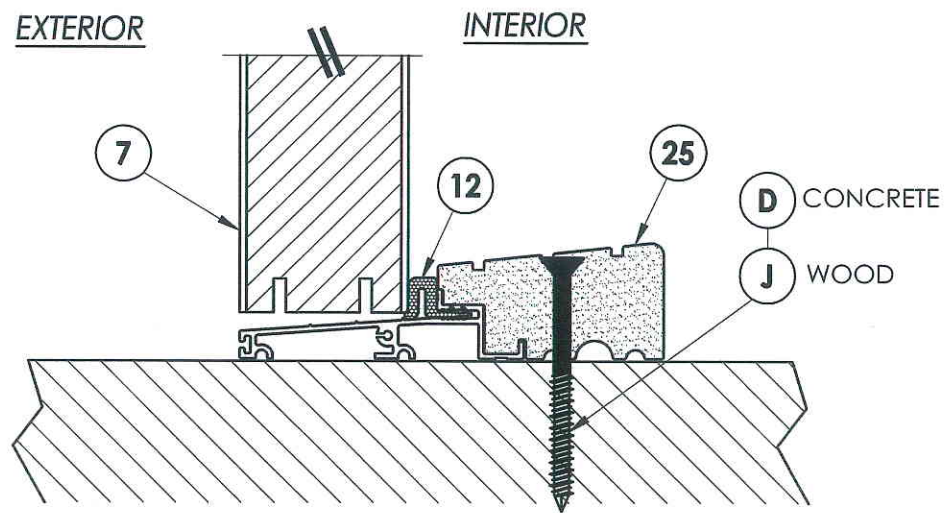
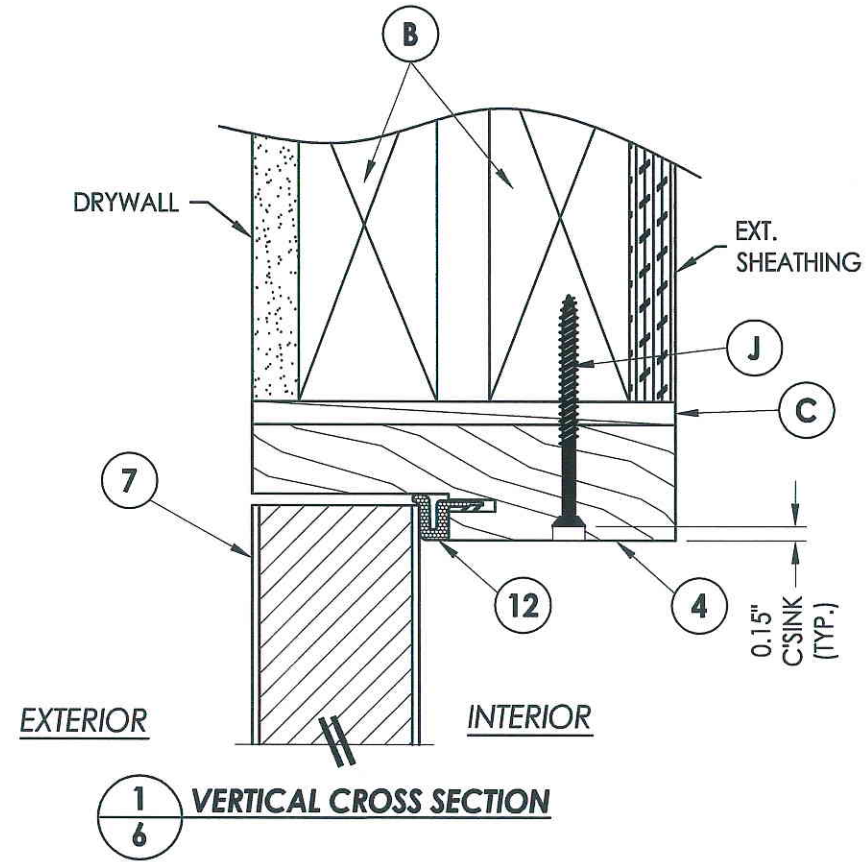
TEXAS BOARD OF PROFESSIONAL ENGINEERS
CERTIFICATE OF REGISTRATION # F-11852

PRODUCT: RightConcept
6'8 FLUSH-GLAZED

PART OR ASSEMBLY:
HORIZONTAL CROSS SECTIONS

NO.	DATE	BY	REVISIONS

DATE: 9/21/10
SCALE: N.T.S.
DWG. BY: JK
CHK. BY: LFS
DRAWING NO.: TX-4111
SHEET 5 OF 11



Documents Prepared By: Lyndon F. Schmidt, P.E.
TEXAS P.E. #104123

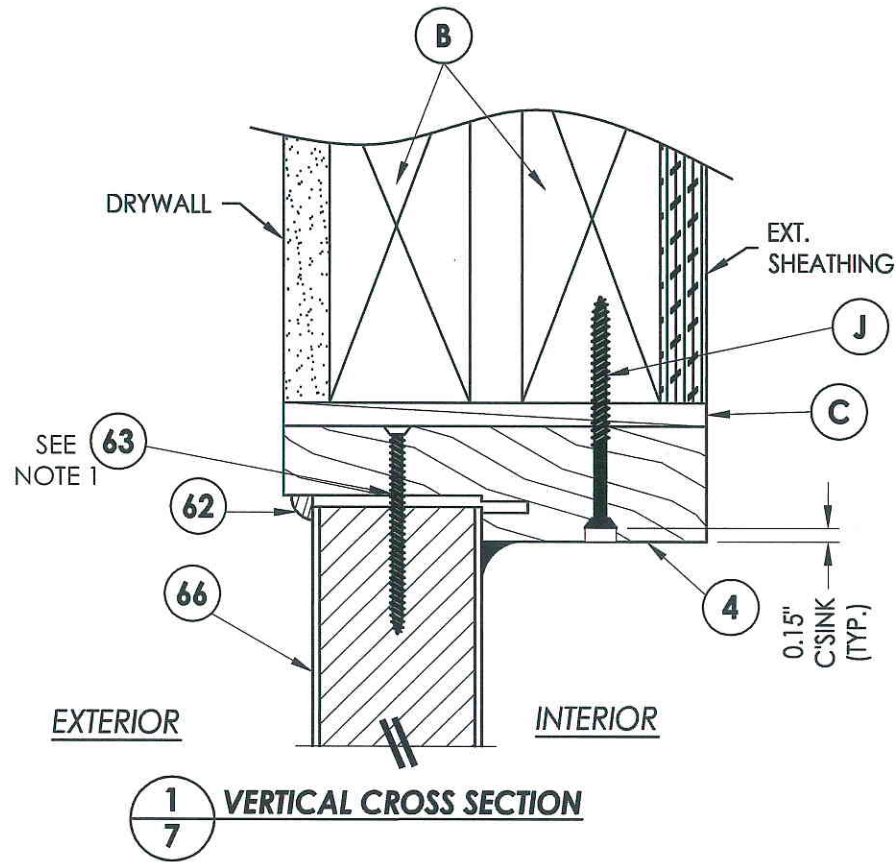
RW BUILDING CONSULTANTS, INC.
P.O. Box 230 Valrico FL, 33595
Phone No.: 813.659.9197

TEXAS BOARD OF PROFESSIONAL ENGINEERS
CERTIFICATE OF REGISTRATION # F-11852

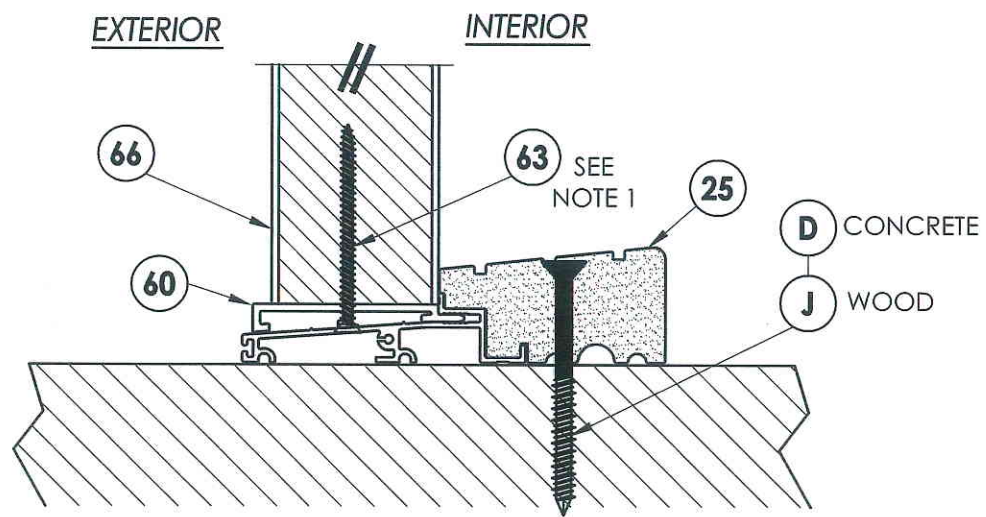
PRODUCT: RightConcept
6'8 FLUSH-GLAZED
PART OR ASSEMBLY:
VERTICAL CROSS SECTIONS

NO.	DATE	REVISIONS	BY

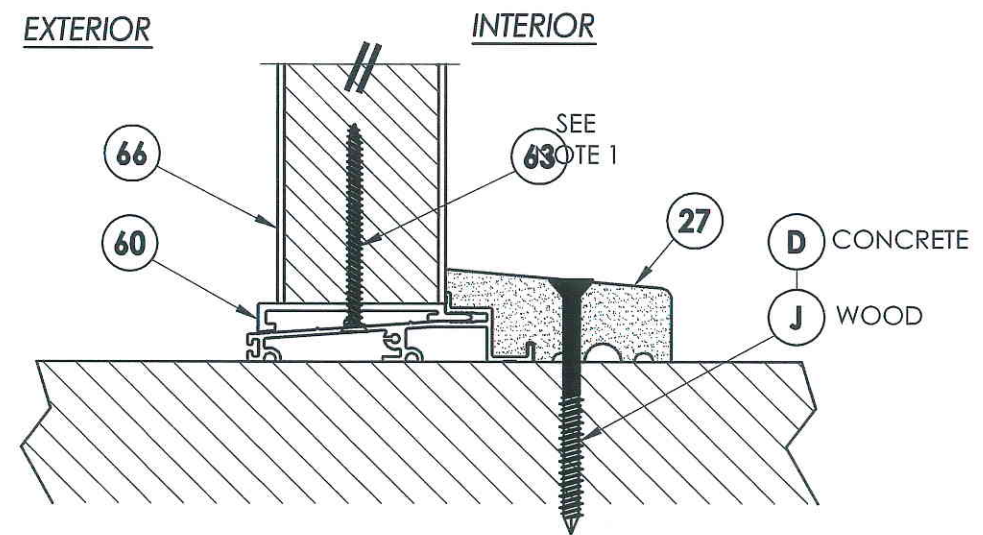
DATE: 9/21/10
SCALE: N.T.S.
DWG. BY: JK
CHK. BY: LFS
DRAWING NO.: TX-4111
SHEET 6 OF 11



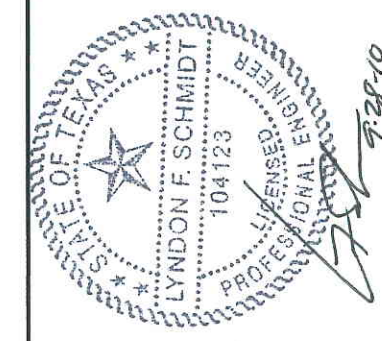
1
7 VERTICAL CROSS SECTION



2
7 VERTICAL CROSS SECTION
Outswing sill - high dam



3
7 VERTICAL CROSS SECTION
Outswing sill



NOTE:

- Sidelite screws (item #63) located at 3" from each end and on center line.

Documents Prepared By: Lyndon F. Schmidt, P.E.
TEXAS P.E. #104123

RW BUILDING CONSULTANTS, INC.
P.O. Box 230 Valrico FL 33595
Phone No.: 813.659.9197

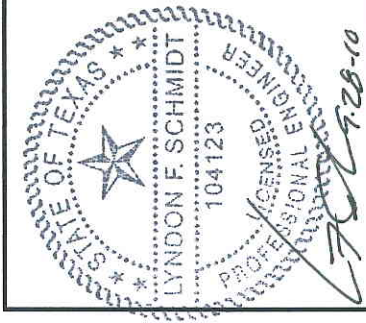
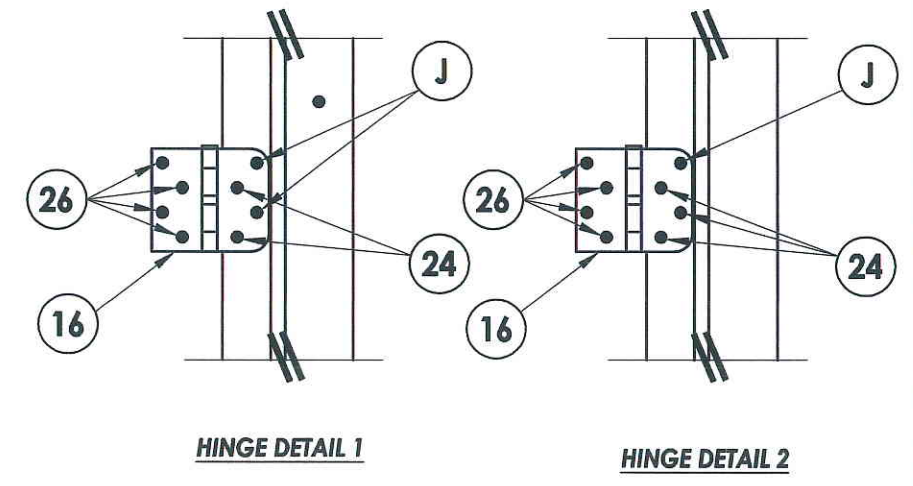
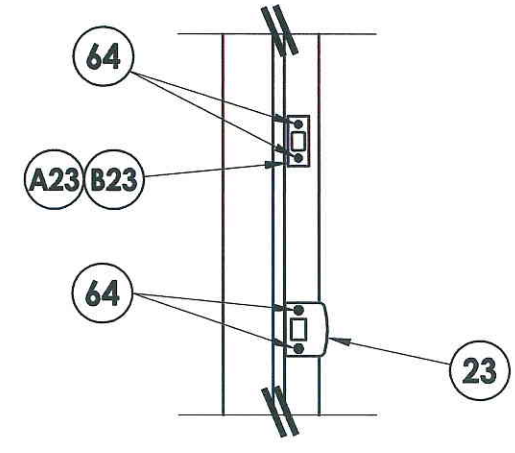
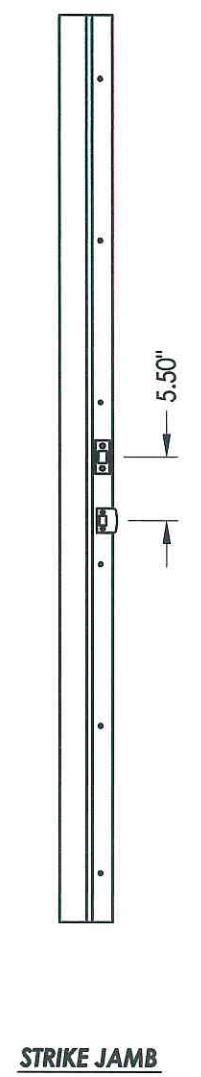
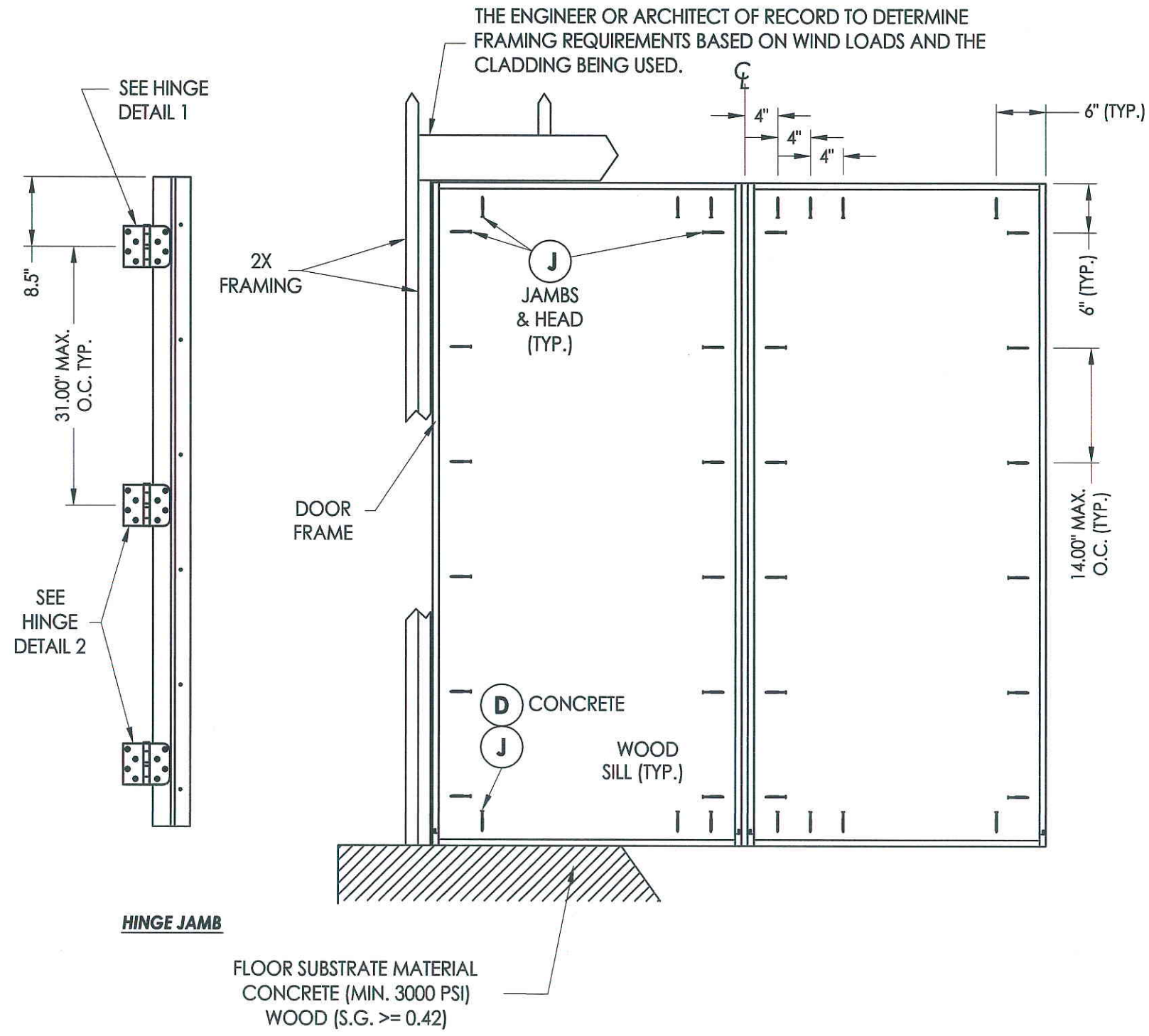
TEXAS BOARD OF PROFESSIONAL ENGINEERS
CERTIFICATE OF REGISTRATION # F-11852

PRODUCT: RightConcept
6'8 FLUSH-GLAZED

PART OR ASSEMBLY:
VERTICAL CROSS SECTIONS

NO.	DATE	BY	REVISIONS

DATE: 9/21/10
SCALE: N.T.S.
DWG. BY: JK
CHK. BY: LFS
DRAWING NO.: TX-4111
SHEET 7 OF 11



Documents Prepared By: Lyndon F. Schmidt, P.E.
TEXAS P.E. #104123

RW BUILDING CONSULTANTS, INC.
P.O. Box 230 Valrico FL 33595
Phone No.: 813.659.9197

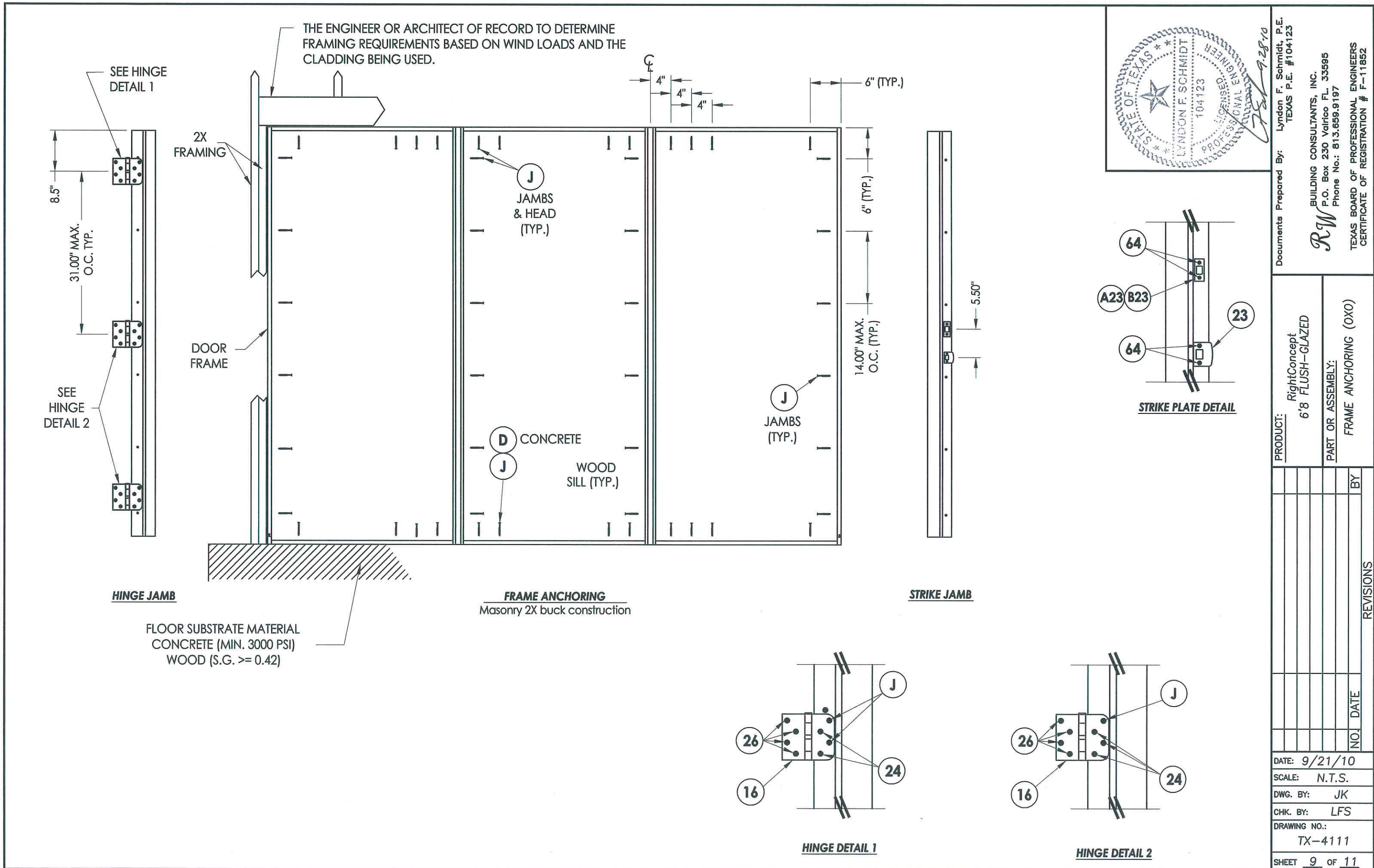
TEXAS BOARD OF PROFESSIONAL ENGINEERS
CERTIFICATE OF REGISTRATION # F-11852

PRODUCT: RightConcept
6"8 FLUSH-GLAZED

PART OR ASSEMBLY:
FRAME ANCHORING (XO)

NO.	DATE	BY	REVISIONS

DATE: 9/21/10
SCALE: N.T.S.
DWG. BY: JK
CHK. BY: LFS
DRAWING NO.: TX-4111
SHEET 8 OF 11



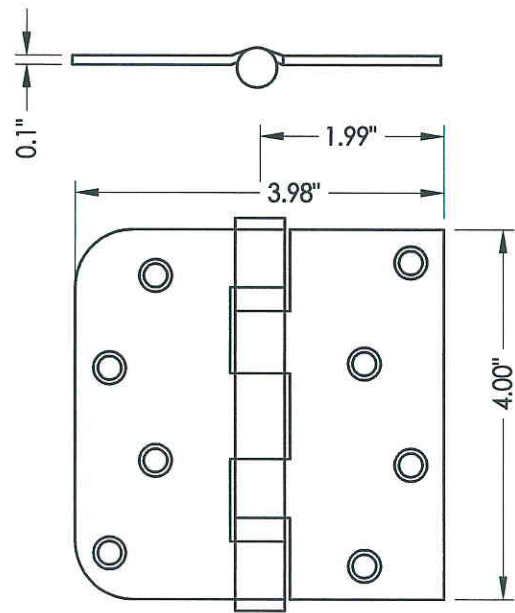
Lyndon F. Schmidt, P.E.
 TEXAS P.E. #104123
 R.W. BUILDING CONSULTANTS, INC.
 P.O. Box 230 Valrico FL, 33595
 Phone No.: 813.659.9197
 TEXAS BOARD OF PROFESSIONAL ENGINEERS
 CERTIFICATE OF REGISTRATION # F-11852

Documents Prepared By: Lyndon F. Schmidt, P.E. TEXAS P.E. #104123

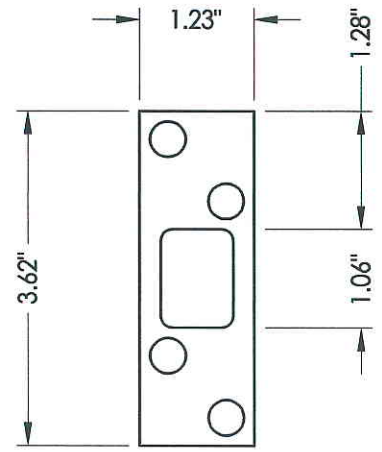
PRODUCT: RightConcept
6'8" FLUSH-GLAZED

PART OR ASSEMBLY: FRAME ANCHORING (OXO)

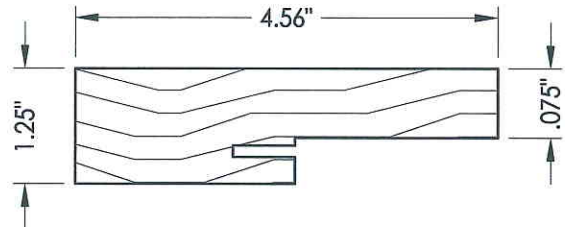
NO.	DATE	BY	REVISIONS



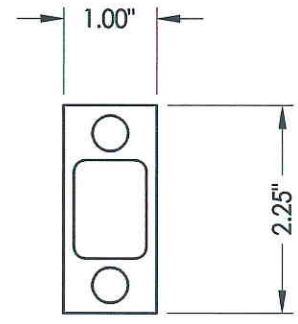
18 HINGE



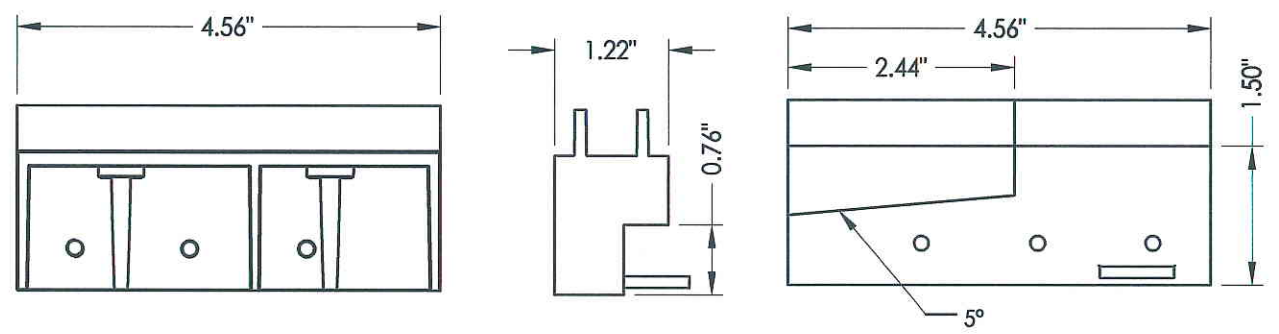
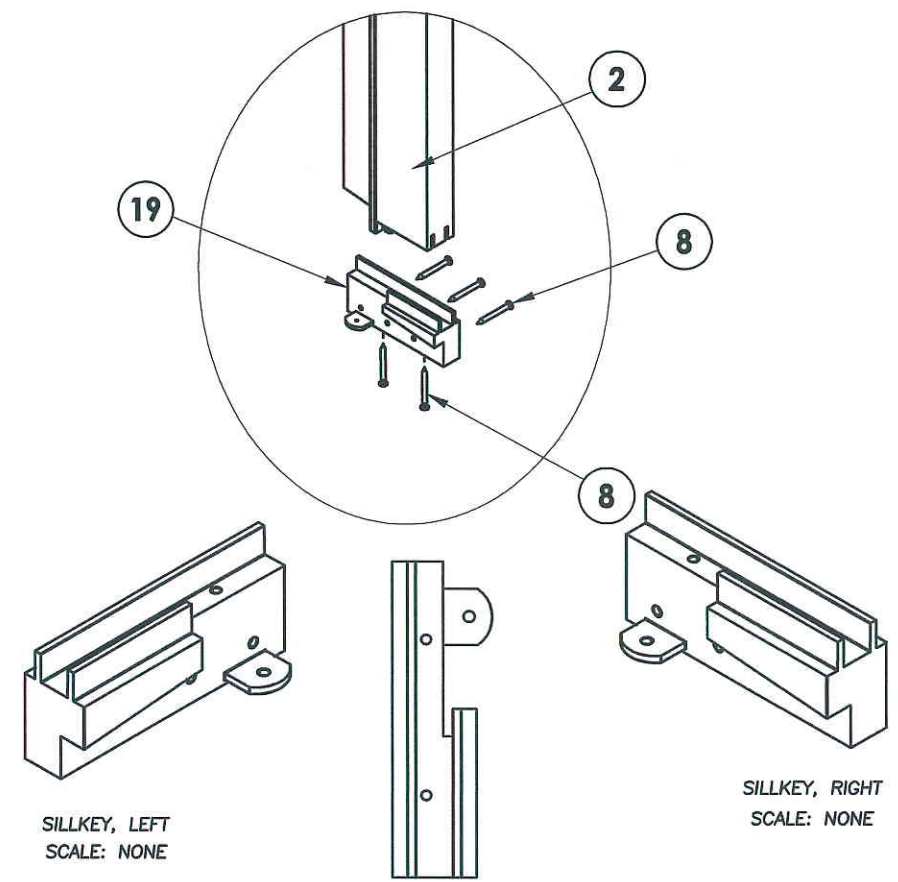
B23 DEADBOLT PLATE
4-HOLE



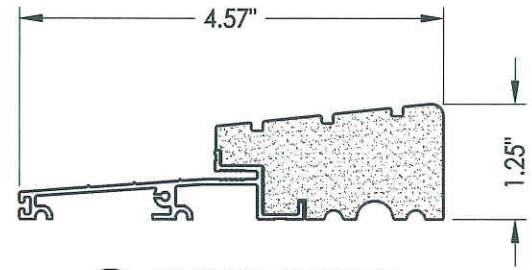
4 3 2 SIDE & HEAD JAMBS



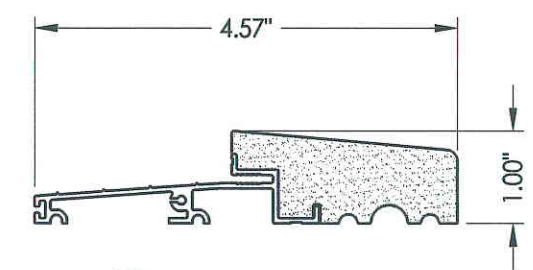
B23 DEADBOLT PLATE
2-HOLE



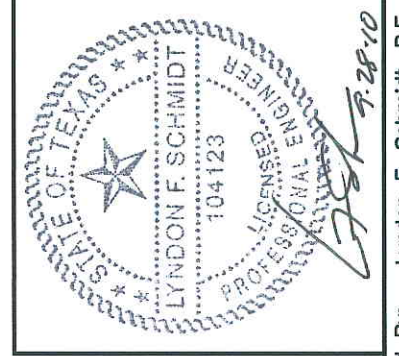
19 SILLKEY DETAILS
Optional



25 OUTSWING THRESHOLD
High-dam option



27 OUTSWING THRESHOLD



Documents Prepared By: Lyndon F. Schmidt, P.E.
TEXAS P.E. #104123

RW BUILDING CONSULTANTS, INC.
P.O. Box 230 Valrico FL, 33595
Phone No.: 813.659.9197

TEXAS BOARD OF PROFESSIONAL ENGINEERS
CERTIFICATE OF REGISTRATION # F-11852

PRODUCT: RightConcept
6'8 FLUSH-GLAZED

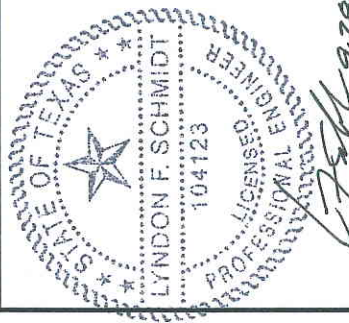
PART OR ASSEMBLY: COMPONENTS

NO.	DATE	BY	REVISIONS

DATE: 9/21/10
SCALE: N.T.S.
DWG. BY: JK
CHK. BY: LFS
DRAWING NO.: TX-4111
SHEET 10 OF 11

R:\A - Projects\Project Folders\Proj 1001-1100\p1098\RWBC Drawings\TX-4110.dwg, 11.2

BILL OF MATERIALS		
ITEM #	DESCRIPTION	MATERIAL
B	2X BUCK SG >= 0.55	WOOD
C	1/4" MAX. SHIM SPACE	-
D	1/4" X 2-3/4" ELCO OR ITW CONCRETE SCREW	STEEL
J	#10 X 2-1/2" PFH WOOD SCREW	STEEL
2	STRIKE JAMB - FINGER-JOINT PINE (4 - 9/16") - SG >= 0.42	WOOD
3	HINGE JAMB - FINGER-JOINT PINE (4 - 9/16") - SG >= 0.42	WOOD
4	HEAD - FINGER-JOINT PINE (4 - 9/16") - SG >= 0.42	WOOD
7	DOOR PANEL - SEE DOOR PANEL DETAIL SHEET FOR CONSTRUCTION DETAILS	-
8	#6 X 1-1/4 PFH DRYWALL SCREW	STEEL
9	#9 X 2-1/4" PFH WOOD SCREW	STEEL
12	WEATHER STRIP QEBD650 Q-LON	-
16	3.983" X 4.0" HINGE MIN 0.098" THICK	STEEL
19	SILLKEY (OPTIONAL)	PC/ASA
23	STRIKE PLATE	STEEL
A23	DEADBOLT PLATE (2-HOLE)	STEEL
B23	DEADBOLT PLATE (4-HOLE)	STEEL
24	#9 X 5/8" PFH WS	STEEL
25	OUTSWING HIGH-DAM THRESHOLD ALUMINUM W/ COMPOSITE SUBSTRATE	ALUM./ COMP.
26	#9 X 1.0" PFH WS	STEEL
27	OUTSWING THRESHOLD ALUMINUM W/ COMPOSITE SUBSTRATE	ALUM./ COMP.
43	PVC & ALUMINUM SPACER SYSTEM	PVC/ ALUM.
60	SIDELITE SPACER - OUTSWING	PVC
62	QUARTER ROUND	WOOD
63	#9 x 2-1/4" PFH SCREW	STEEL
64	#8 x 2" PFH SCREW	STEEL
66	SIDELITE PANEL - SEE SIDELITE PANEL DETAIL SHEET FOR CONSTRUCTION DETAILS	-
68	1X MULLION REINFORCEMENT SG >= 0.42	WOOD



Documents Prepared By: Lyndon F. Schmidt, P.E.
TEXAS P.E. #104123

RW BUILDING CONSULTANTS, INC.
P.O. Box 230 Vaico FL 33595
Phone No.: 813.659.9197

TEXAS BOARD OF PROFESSIONAL ENGINEERS
CERTIFICATE OF REGISTRATION # F-11852

PRODUCT: RightConcept
6'8 FLUSH-GLAZED

PART OR ASSEMBLY:
BILL OF MATERIALS

NO.	DATE	BY	REVISIONS

DATE: 9/21/10
SCALE: N.T.S.
DWG. BY: JK
CHK. BY: LFS
DRAWING NO.: TX-4111
SHEET 11 of 11

CONCRETE ANCHOR NOTES:

- Substitution of equal concrete anchors from a different supplier may have different edge distance and center distance requirements.
- Concrete anchor locations at the corners may be adjusted to maintain the min. edge distance to mortar joints. If concrete anchor locations noted as "MAX. ON CENTER" must be adjusted to maintain the min. edge distance to mortar joints, additional concrete anchors may be required to ensure the "MAX. ON CENTER" dimensions are not exceeded.
- Concrete anchor table:

ANCHOR TYPE	ANCHOR SIZE	MIN. EMBEDMENT	MIN. CLEARANCE TO MASONRY EDGE	MIN. CLEARANCE TO ADJACENT ANCHOR
ITW	1/4"	1-1/4"	2-1/2"	3"
ELCO	1/4"	1-1/4"	1"	4"