

RightConcept™

2615 S. 80th STREET TACOMA, WA 98409

FLUSH-GLAZED FIBERGLASS DOOR w/ or w/o SIDELITES OUTSWING "IMPACT"

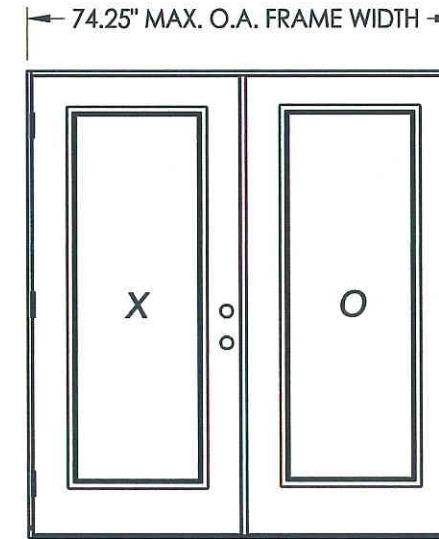
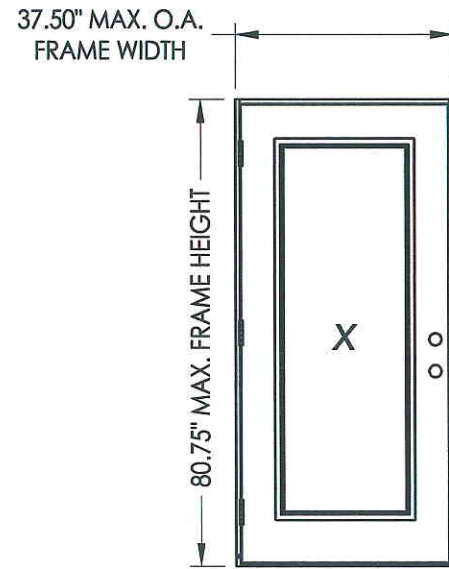
EVALUATED FOR USE IN THE STATE OF TEXAS

The Right Concept Fiberglass Door described herein complies with the 2006 International Residential Code (IRC), Sections R301 & R613 and the 2006 International Building Code (IBC), Sections 1405.12, 1609, 1714.5, 2403 and 2404 (including Texas revisions) subject to the following conditions:

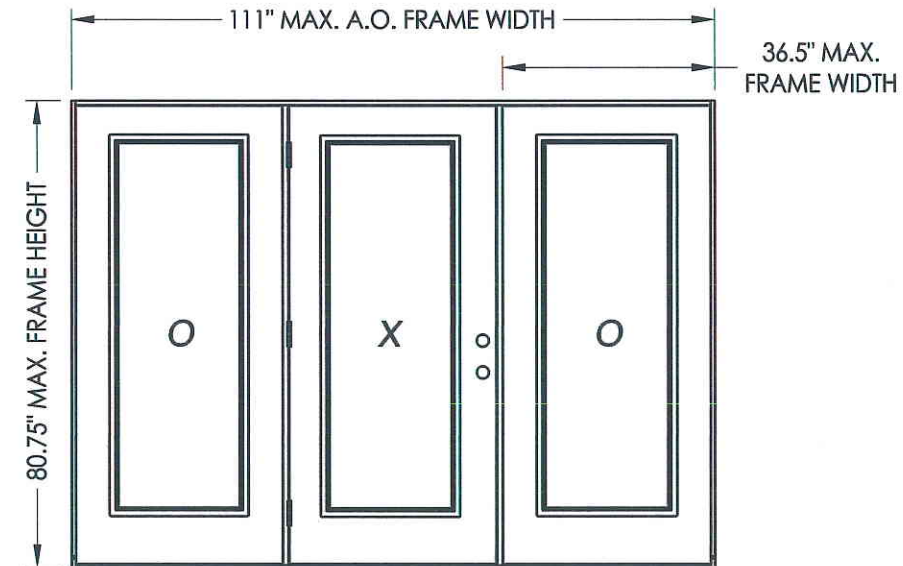
1. Anchors shall be as listed and spaced as shown in the details. Anchor embedment to base material shall be beyond wall dressing or stucco.
2. This system has been tested and evaluated as a large missile impact protective system for installation in the Seaward, Inland I and Inland II areas. This product meets missile level "D" and includes Wind Zone 4 as defined in ASTM E1996.
3. Allowable design pressure requirements must be equal to or less than the design pressure rating shown in the design pressure chart, sheet 1 of this drawing.
4. Conditions not covered by this drawing are subject to further engineering analysis.

SUPPORTING DOCUMENTS & EVIDENCE

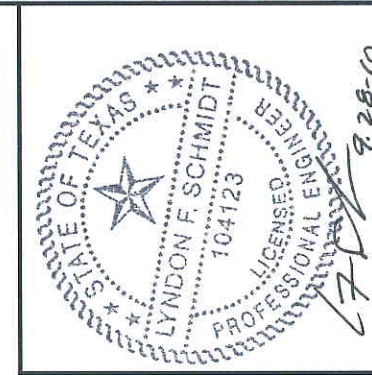
1. Testing per TAS 201, 202 & 203-94; AAMA/WDMA/CSA 101/I.S.2/A440-05, ASTM E 1886/1996: Testing Evaluation Laboratories, Inc. test report(s) #: TEL 06-0918-1, TEL 01370051 & TEL 08-1370021, 21-IC.
2. Calculations (Anchoring and Glass load resistance report ASTM E1300-04) prepared by Lyndon F. Schmidt, P.E.
3. Certificate of Participation issued by the National Accreditation and Management Institute, Inc., certifying that RightConcept is manufacturing products within a Quality Assurance program.



CONTINUOUS HEADER AND SILL



CONTINUOUS HEADER AND SILL



Documents Prepared By: Lyndon F. Schmidt, P.E.
TEXAS P.E. #104123

RW BUILDING CONSULTANTS, INC.
P.O. Box 230 Valrico FL 33595
Phone No.: 813.659.9197

TEXAS BOARD OF PROFESSIONAL ENGINEERS
CERTIFICATE OF REGISTRATION # F-11852

PRODUCT: RightConcept
6'8" FLUSH-GLAZED

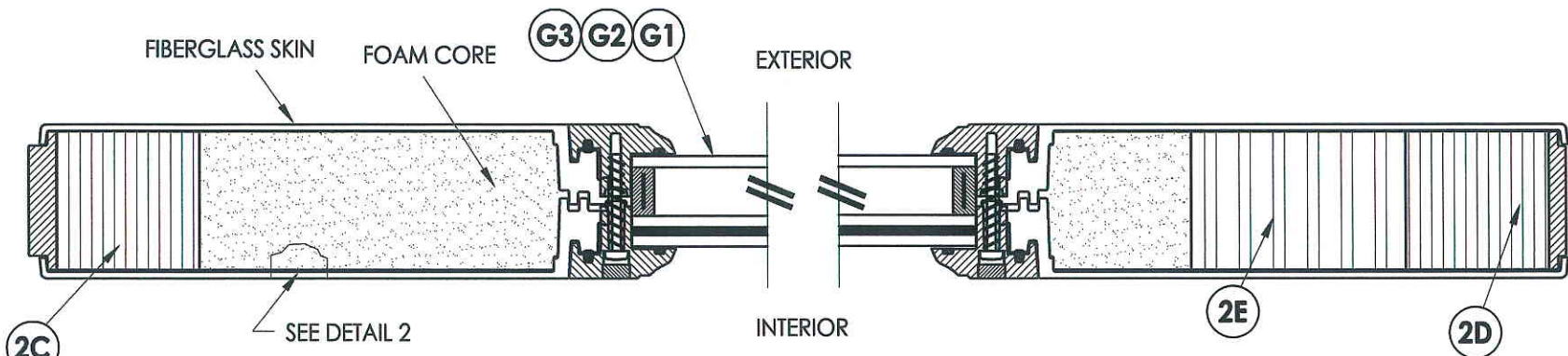
PART OR ASSEMBLY:
TYPICAL ELEVATION, DESIGN
PRESSURES & GENERAL NOTES

NO.	DATE	BY	REVISIONS

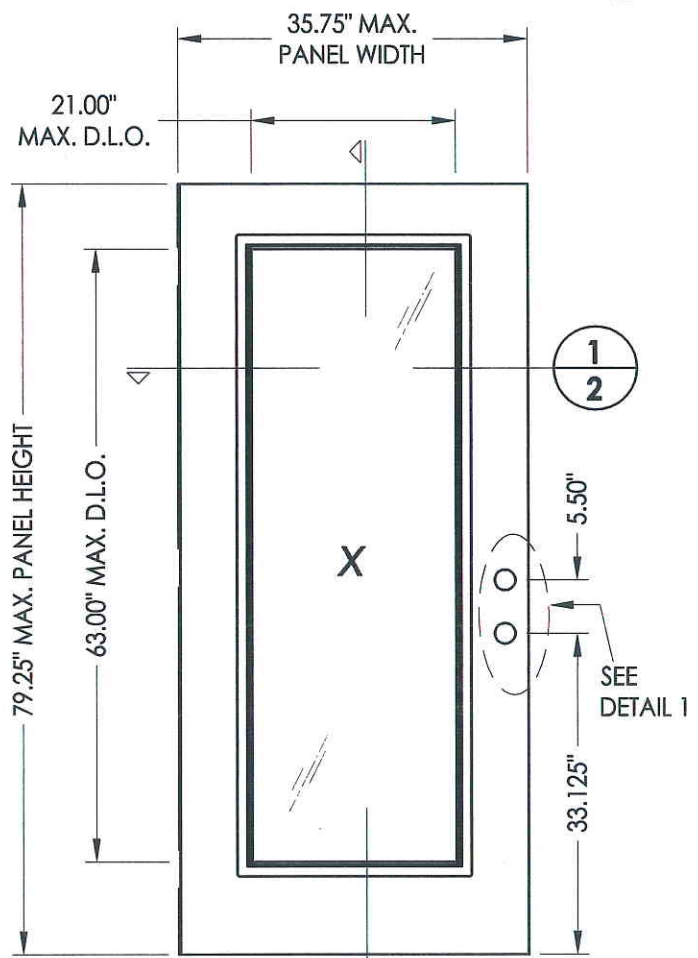
DATE: 9/21/10
SCALE: N.T.S.
DWG. BY: JK
CHK. BY: LFS
DRAWING NO.: TX-4110
SHEET 1 OF 12

TABLE OF CONTENTS	
SHEET#	DESCRIPTION
1	Typical elevations, design pressures & general notes
2	Door panel construction details
3	Sidelite panel construction details and glazing details
4	Elevations
5	Horizontal cross sections
6	Vertical cross sections
7	Vertical cross sections
8	Frame anchoring (X)
9	Frame anchoring (XO/OX)
10	Frame anchoring (OX)
11	Components
12	Bill of materials

CONFIGURATION	MAX. O.A. FRAME DIMENSION	MAX. D.L.O. DIMENSION	GLASS TYPE	DESIGN PRESSURE (PSF)	
				POSITIVE	NEGATIVE
X	37.50" x 80.75"	21.0" x 63.0"	G1, G2 & G3	+60.0	-60.0
XO/OX	74.25" x 80.75"	21.0" x 63.0"	G1, G2 & G3	+60.0	-60.0
OXO	111.0" x 80.75"	21.0" x 63.0"	G1, G2 & G3	+60.0	-60.0

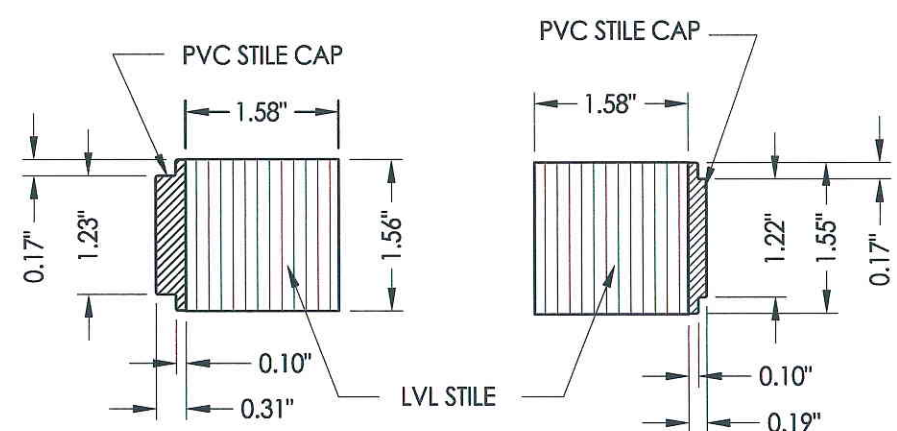


1
2 HORIZONTAL CROSS SECTION



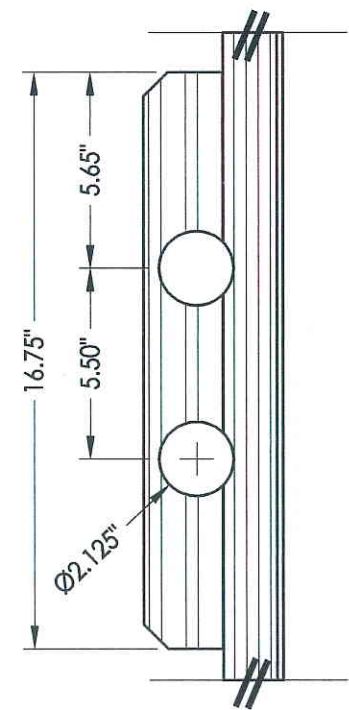
7 GLAZED DOOR PANEL
Fiberglass

FIBERGLASS DOOR SKIN: MIN. 0.079" THK.
FOAM CORE MATERIAL: POLYURETHANE

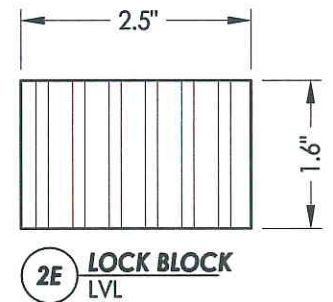


2C HINGE STILE
PVC/LVL

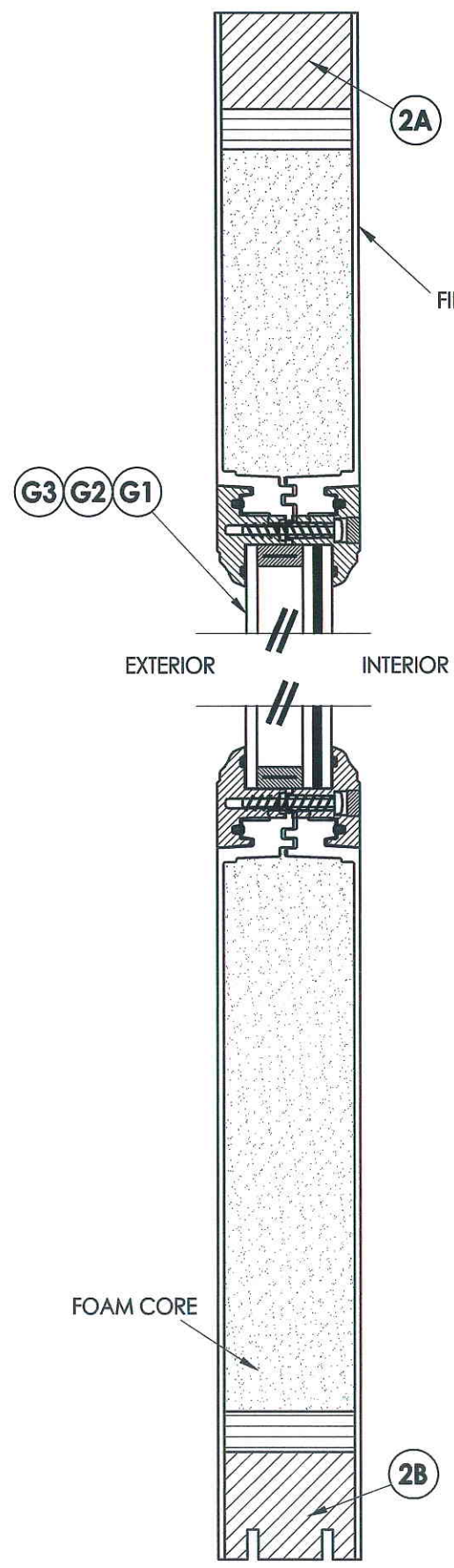
2D LATCH STILE
PVC/LVL



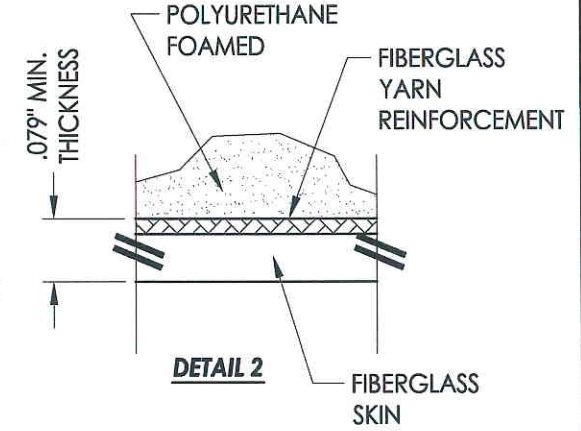
DETAIL 1



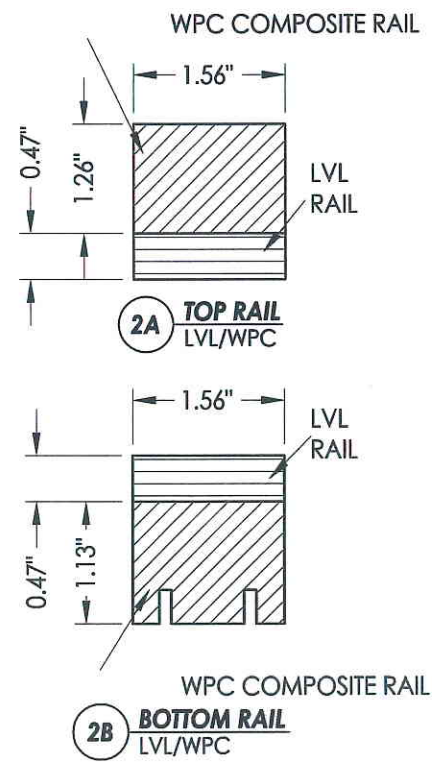
2E LOCK BLOCK
LVL



2
2 VERTICAL CROSS SECTION



DETAIL 2



2A TOP RAIL
LVL/WPC

2B BOTTOM RAIL
LVL/WPC



Documents Prepared By: Lyndon F. Schmidt, P.E.
TEXAS P.E. #104123

RW BUILDING CONSULTANTS, INC.
P.O. Box 230 Valrico FL 33595
Phone No.: 813.659.9197

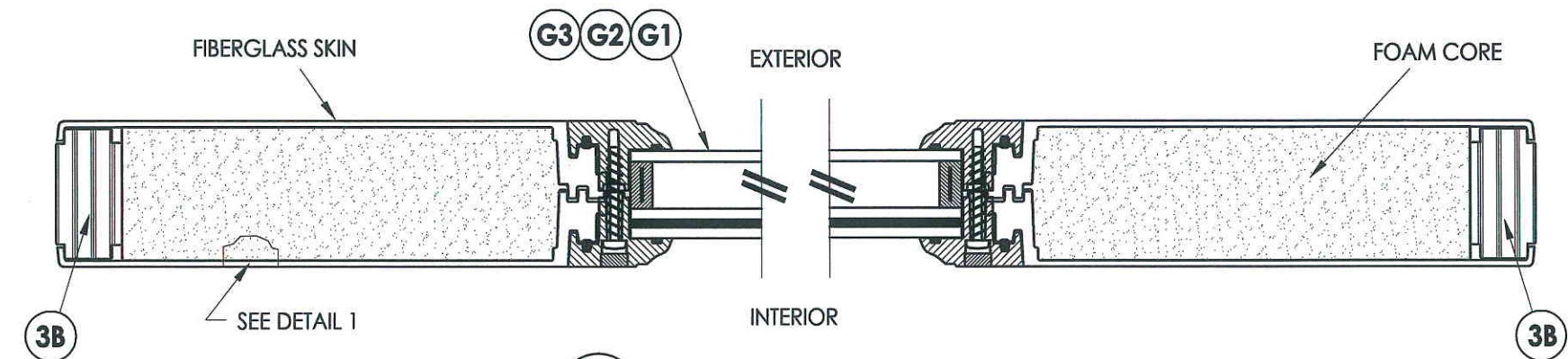
TEXAS BOARD OF PROFESSIONAL ENGINEERS
CERTIFICATE OF REGISTRATION # F-11852

PRODUCT: RightConcept
6'8" FLUSH-GLAZED

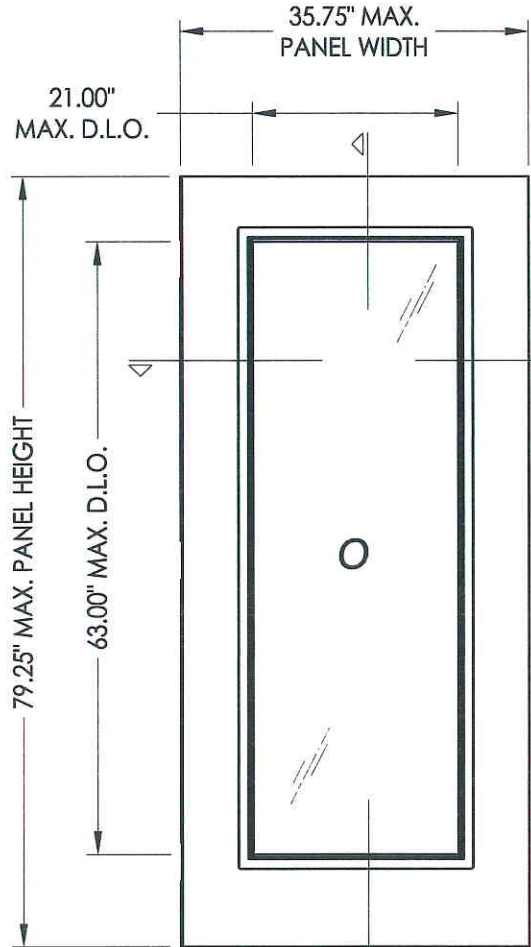
PART OR ASSEMBLY:
DOOR PANEL
CONSTRUCTION DETAILS

NO.	DATE	BY	REVISIONS

DATE: 9/21/10
SCALE: N.T.S.
DWG. BY: JK
CHK. BY: LFS
DRAWING NO.: TX-4110
SHEET 2 OF 12



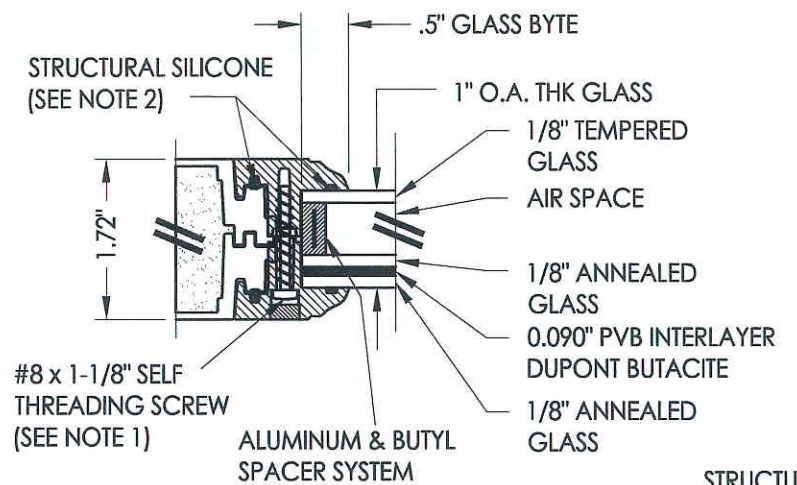
1
3 HORIZONTAL CROSS SECTION



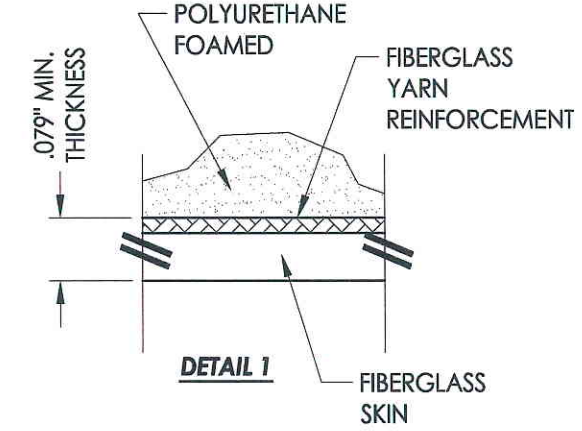
2
3 SIDELITE PANEL
Fiberglass

FIBERGLASS SIDELITE SKIN: MIN. 0.079" THK.
FOAM CORE MATERIAL: POLYURETHANE

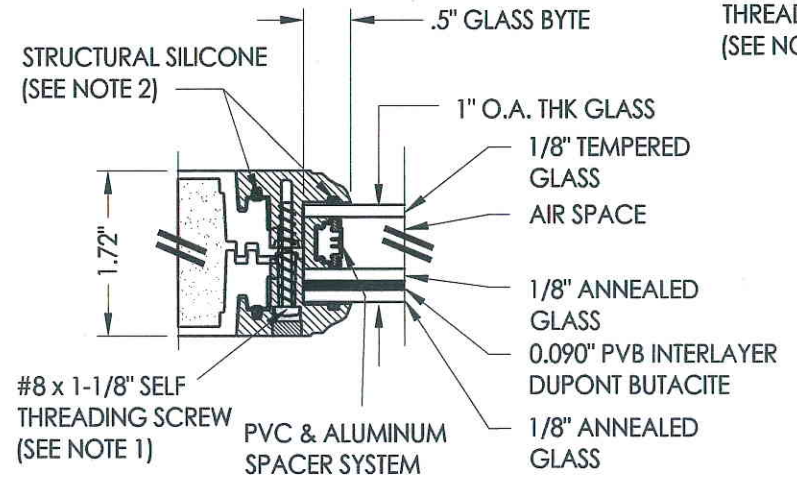
- NOTES:
- Spacing for lite frame screws is as follows:
Sides: 11" from corners and 8.75" o.c. thereafter
Top & Bottom: 9" from corners and @ centerline.
Corners: one @ each corner
 - Structural Silicone: Dow 995, Capstone or Dongyang



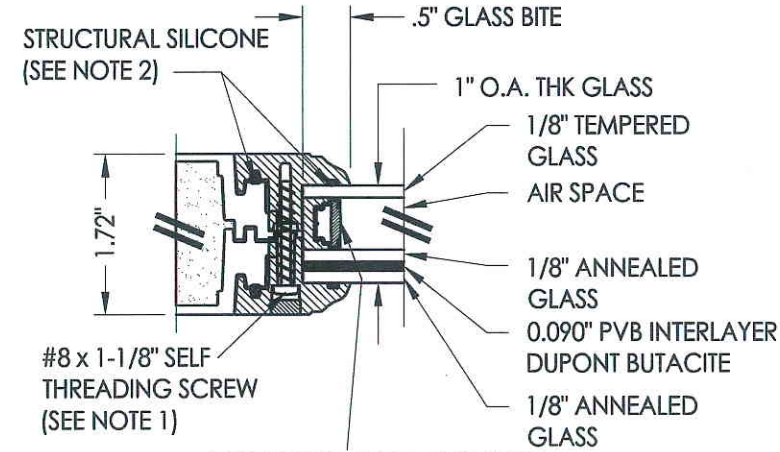
G1 GLAZING DETAIL
Flushed Glazed Lite Frame (Trinity)
PC/ASA



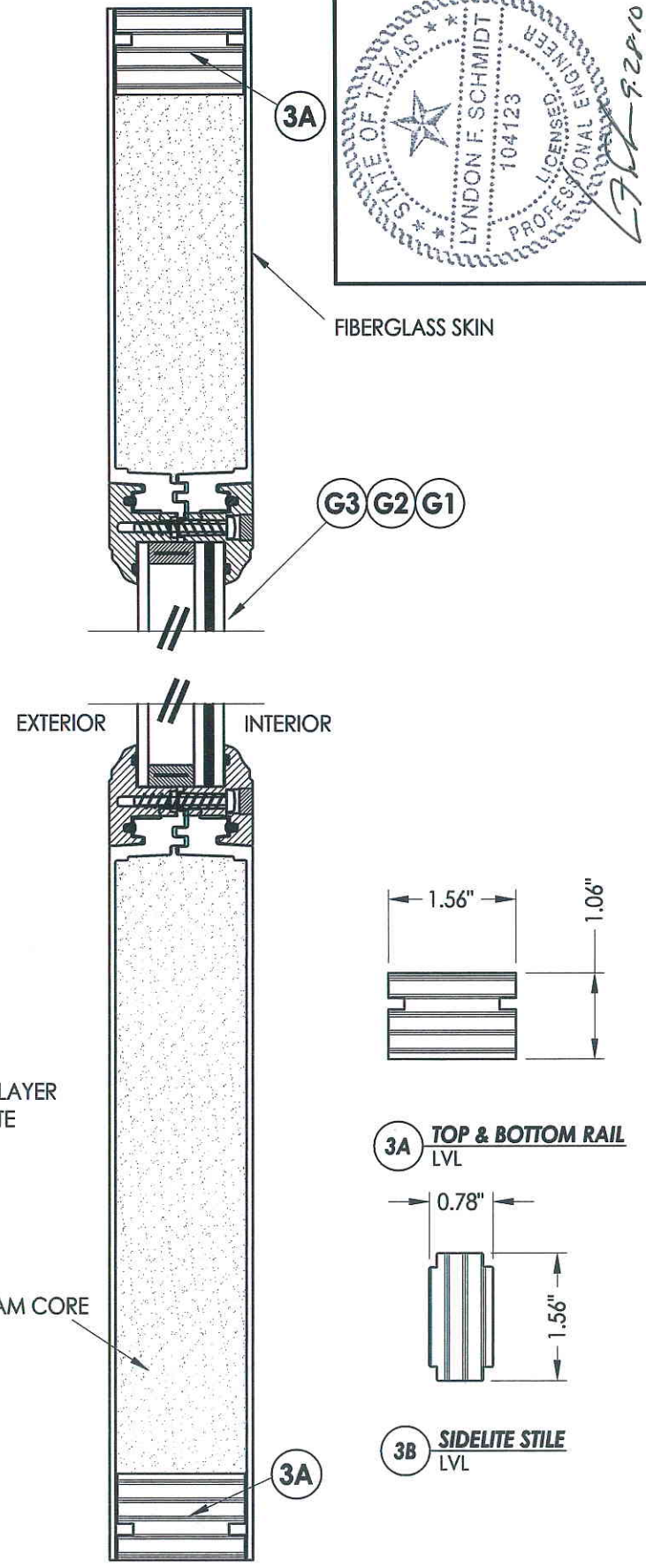
DETAIL 1



G3 GLAZING DETAIL
Flushed Glazed Lite Frame (Trinity)
PC/ASA



G2 GLAZING DETAIL
Flushed Glazed Lite Frame (Trinity)
PC/ASA



2
3 VERTICAL CROSS SECTION



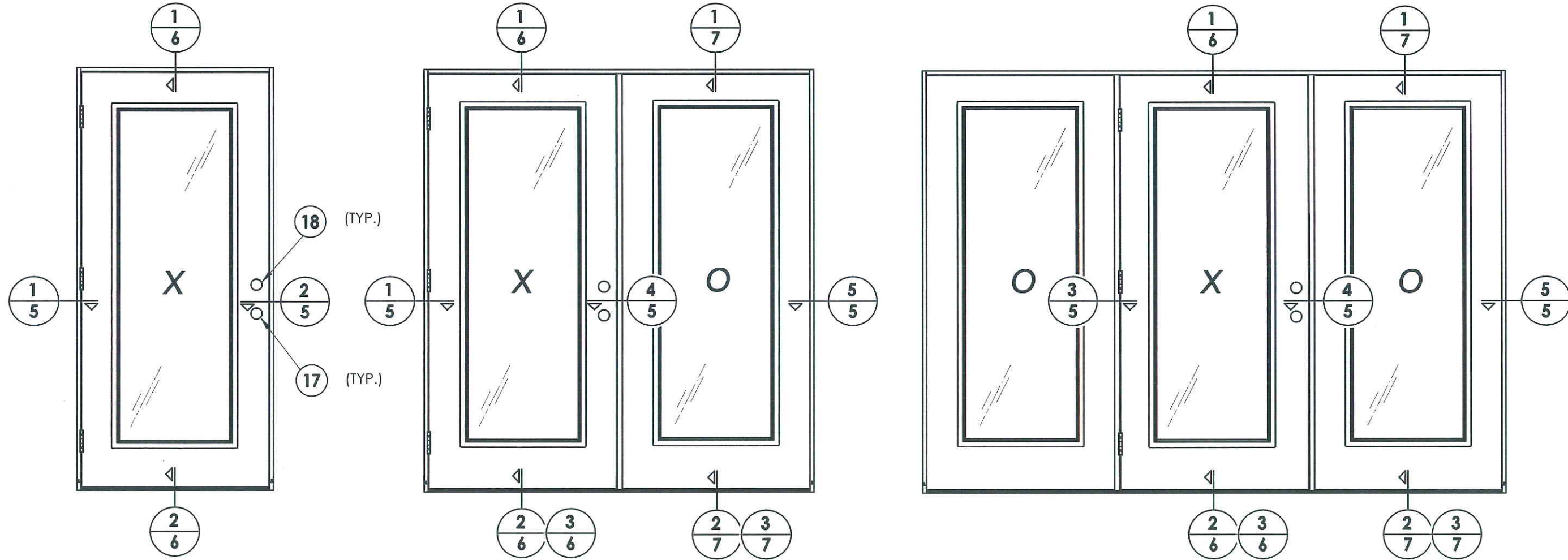
Documents Prepared By: Lyndon F. Schmidt, P.E.
TEXAS P.E. #104123

RW BUILDING CONSULTANTS, INC.
P.O. Box 230 Valrico FL 33595
Phone No.: 813.659.9197

TEXAS BOARD OF PROFESSIONAL ENGINEERS
CERTIFICATE OF REGISTRATION # F-11852

PRODUCT:	RightConcept 6'8 FLUSH-GLAZED	
PART OR ASSEMBLY:	SIDELITE PANEL CONSTRUCTION DETAILS AND GLAZING DETAILS	
NO.	DATE	BY
REVISIONS		
DATE:	9/21/10	
SCALE:	N.T.S.	
DWG. BY:	JK	
CHK. BY:	LFS	
DRAWING NO.:	TX-4110	
SHEET	3 OF 12	

HARDWARE CHART		
MANUFACTURER	MODEL	ITEM #
KWIKSET	LOCK: 660 Combo	17
	DEADBOLT: 660 Combo	18
KWIKSET	LOCK: 740	17
	DEADBOLT: 780	18



ELEVATION (X)

ELEVATION (XO / OX)

ELEVATION (OXO)

Documents Prepared By: Lyndon F. Schmidt, P.E.
 TEXAS P.E. #104123

RW BUILDING CONSULTANTS, INC.
 P.O. Box 230 Valrico FL 33596
 Phone No.: 813.659.9197

TEXAS BOARD OF PROFESSIONAL ENGINEERS
 CERTIFICATE OF REGISTRATION # F-11852

PRODUCT: RightConcept
 6'8 FLUSH-GLAZED

PART OR ASSEMBLY: ELEVATIONS

NO.	DATE	BY

DATE: 9/21/10
 SCALE: N.T.S.
 DWG. BY: JK
 CHK. BY: LFS
 DRAWING NO.: TX-4110
 SHEET 4 OF 12

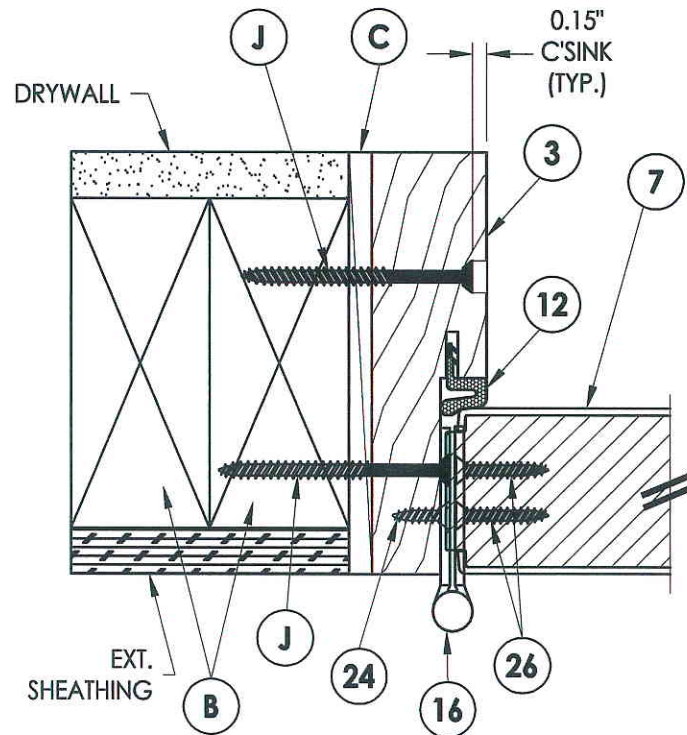


Documents Prepared By: Lyndon F. Schmidt, P.E.
TEXAS P.E. #104123

RW BUILDING CONSULTANTS, INC.
P.O. Box 230 Valrico FL 33595
Phone No.: 813.659.9197

TEXAS BOARD OF PROFESSIONAL ENGINEERS
CERTIFICATE OF REGISTRATION # F-11852

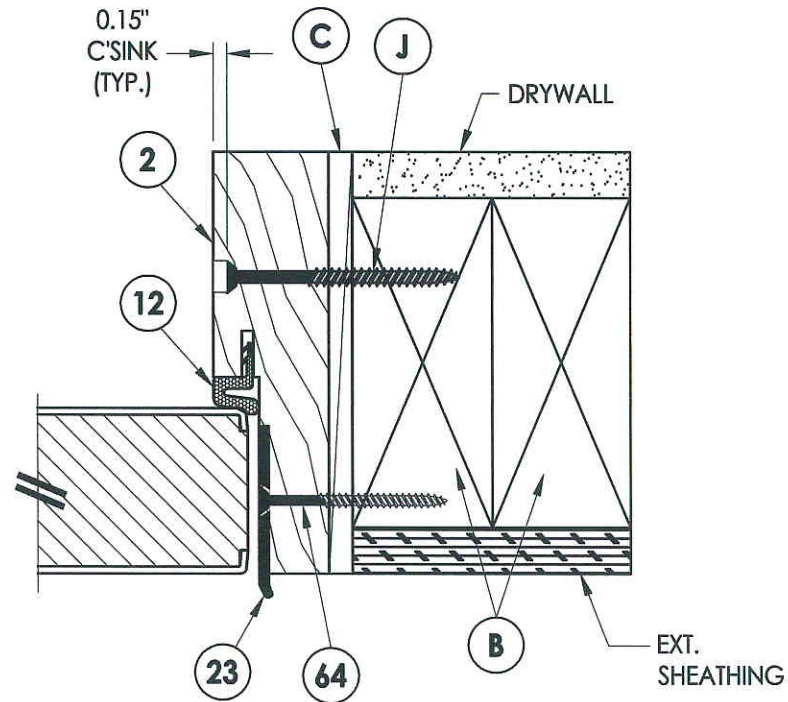
NOTE:
1. Sidelite screws (item #63) located at 6" from each end then 3 equal spaces for a total of 4 screws.



1
5 HORIZONTAL CROSS SECTION

INTERIOR

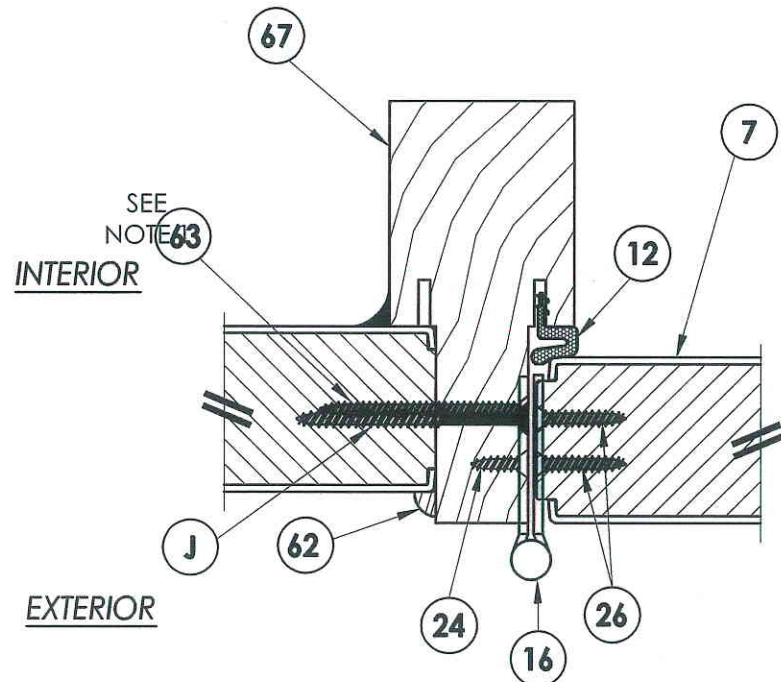
EXTERIOR



2
5 HORIZONTAL CROSS SECTION

INTERIOR

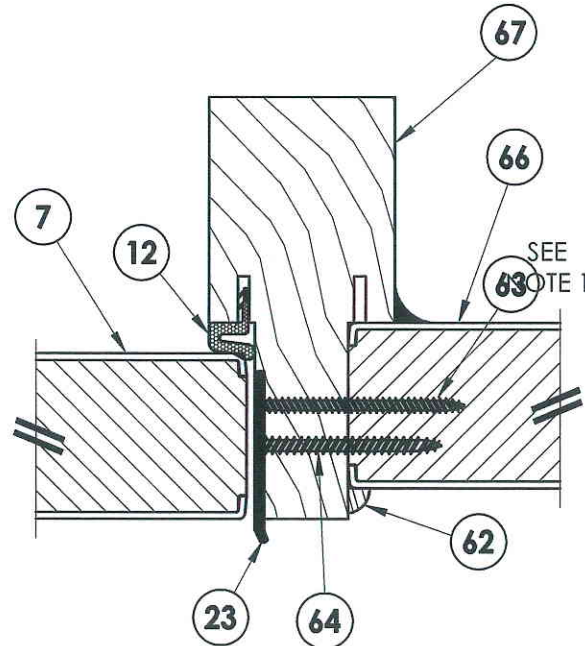
EXTERIOR



3
5 HORIZONTAL CROSS SECTION

INTERIOR

EXTERIOR



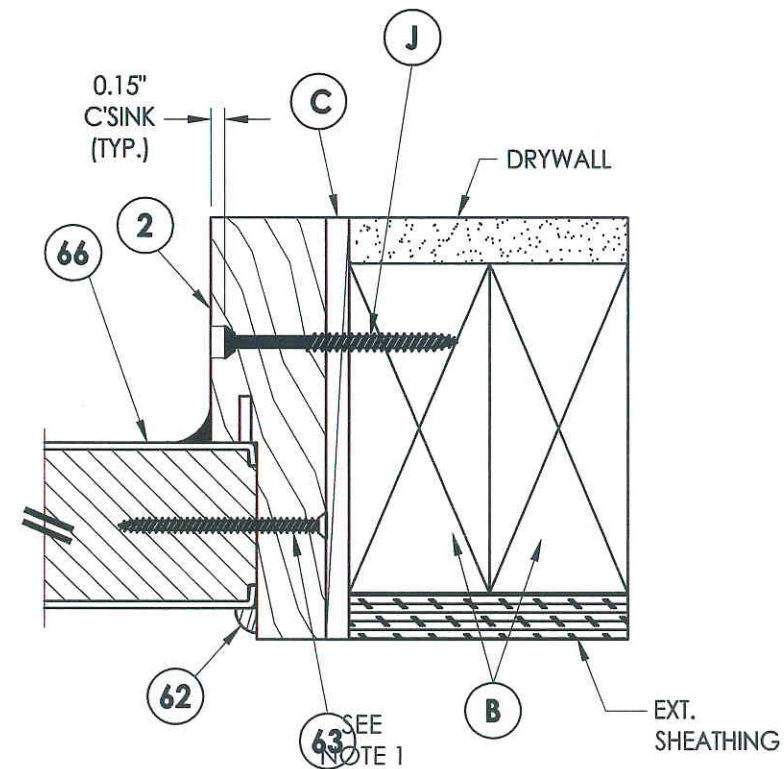
4
5 HORIZONTAL CROSS SECTION

INTERIOR

EXTERIOR

INTERIOR

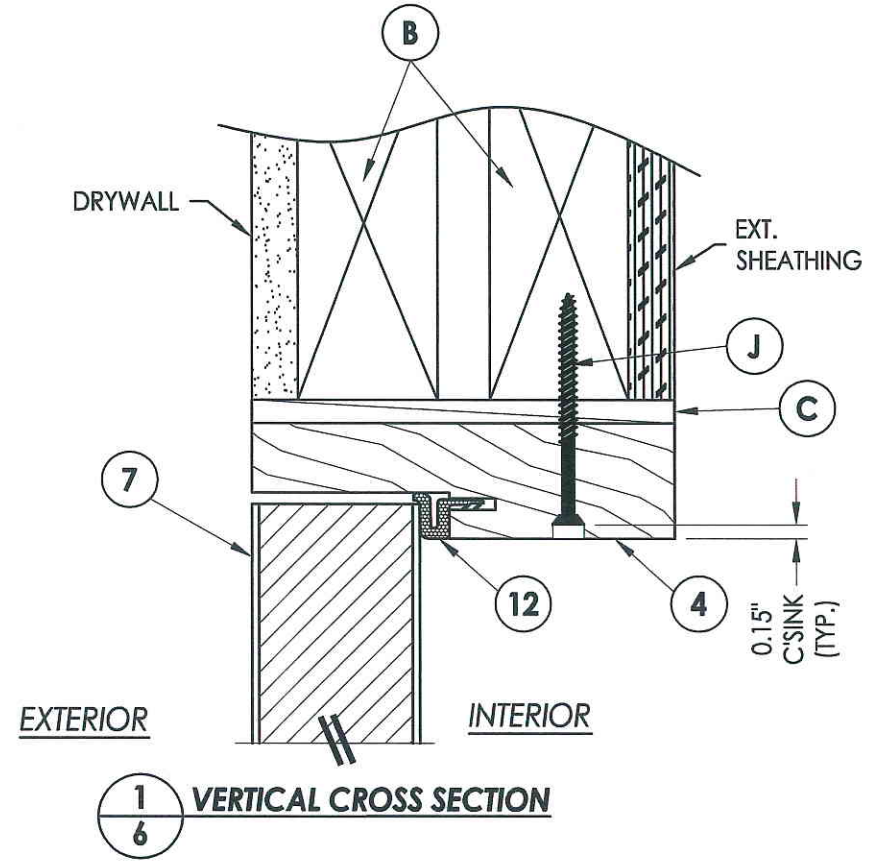
EXTERIOR



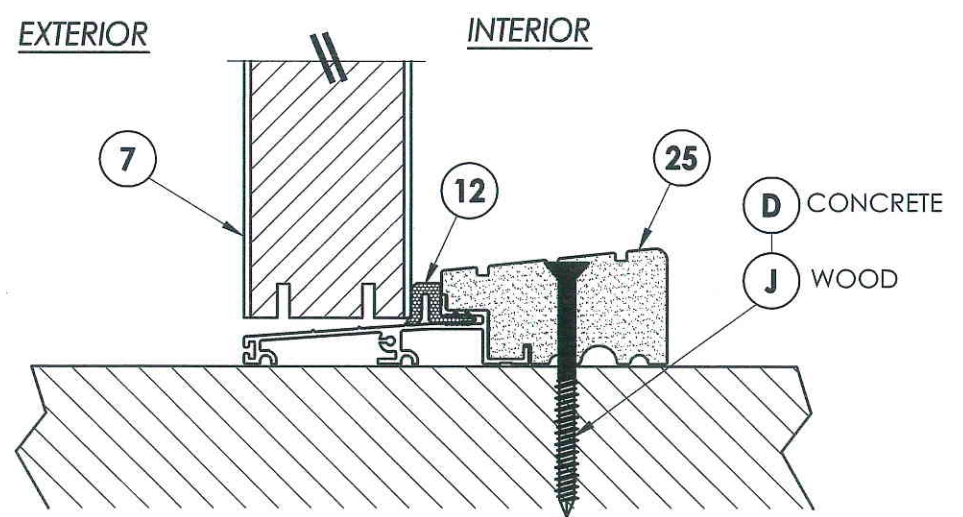
5
5 HORIZONTAL CROSS SECTION

PRODUCT: RightConcept 6'8" FLUSH-GLAZED	PART OR ASSEMBLY: HORIZONTAL CROSS SECTIONS	
	NO. DATE BY	
REVISIONS		
DATE:	9/21/10	
SCALE:	N.T.S.	
DWG. BY:	JK	
CHK. BY:	LFS	
DRAWING NO.:	TX-4110	
SHEET	5 OF 12	

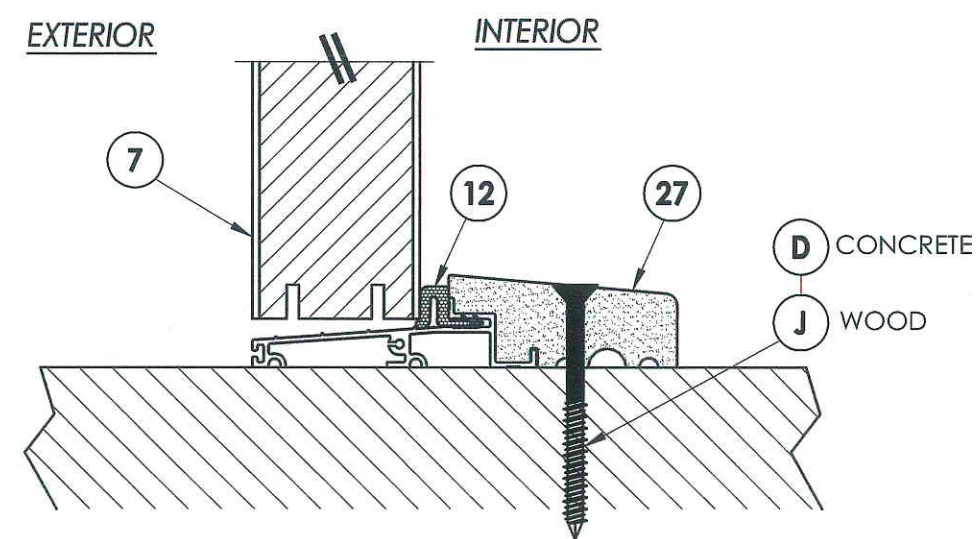
R:\A - Projects\Project Folders\Proj 1001-1100\pf1098\RWBC Drawings\TX-4110.dwg, 6.1



1
6 VERTICAL CROSS SECTION



2
6 VERTICAL CROSS SECTION
Outswing sill - high dam



3
6 VERTICAL CROSS SECTION
Outswing sill



Documents Prepared By: Lyndon F. Schmidt, P.E.
TEXAS P.E. #104123

RW BUILDING CONSULTANTS, INC.
P.O. Box 230 Vairico FL 33595
Phone No.: 813.659.9197

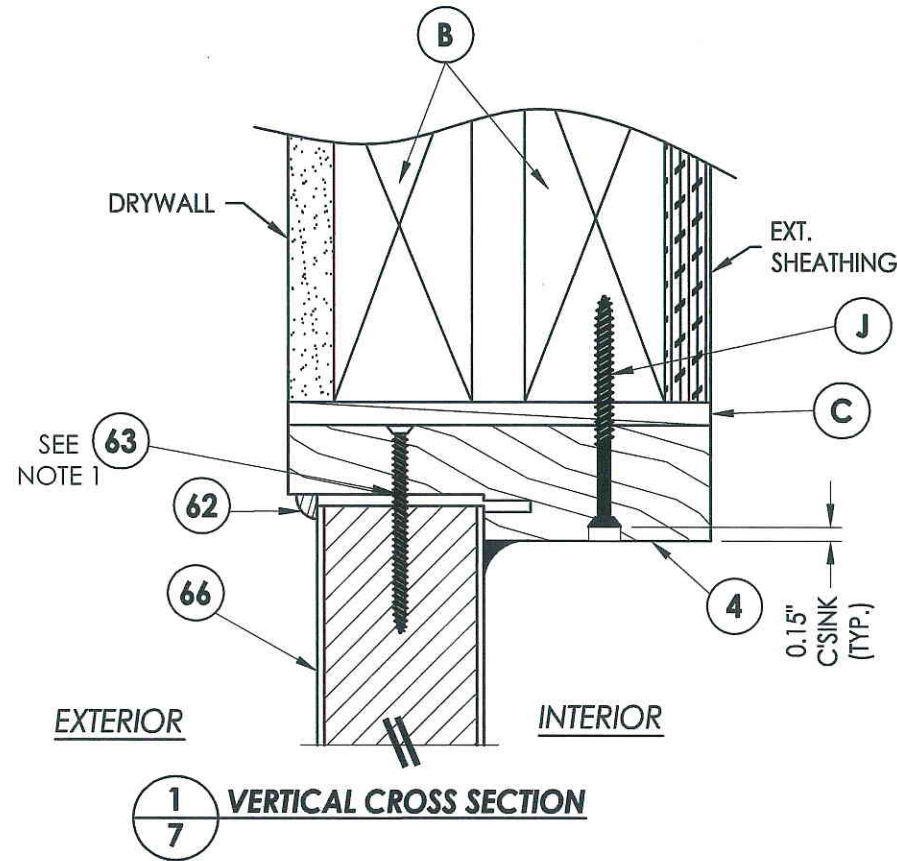
TEXAS BOARD OF PROFESSIONAL ENGINEERS
CERTIFICATE OF REGISTRATION # F-11852

PRODUCT: RightConcept
6'8 FLUSH-GLAZED

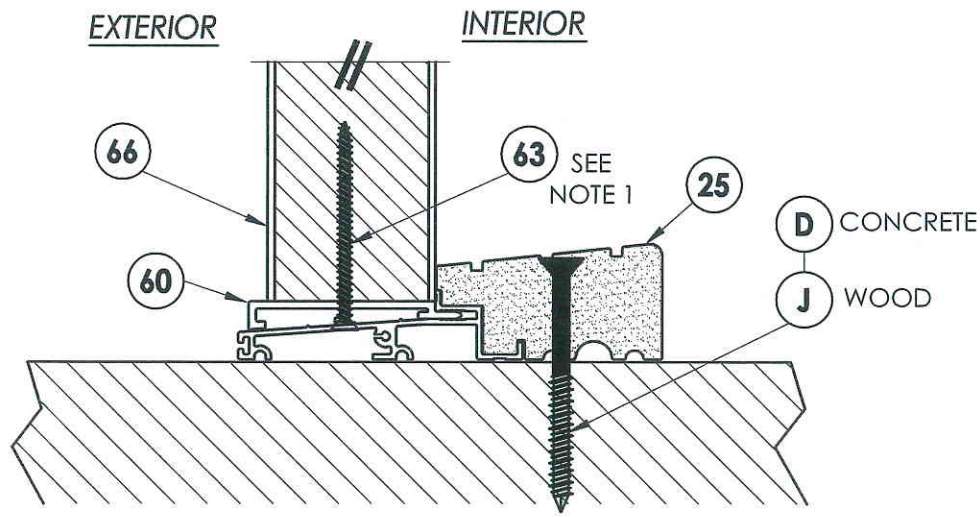
PART OR ASSEMBLY: VERTICAL CROSS SECTIONS

NO.	DATE	BY	REVISIONS

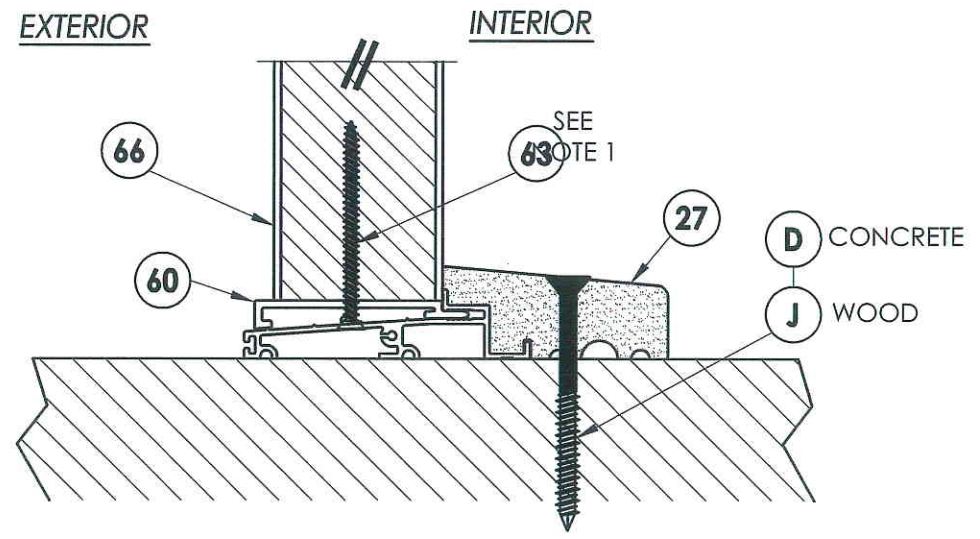
DATE: 9/21/10
SCALE: N.T.S.
DWG. BY: JK
CHK. BY: LFS
DRAWING NO.: TX-4110
SHEET 6 OF 12



1
7 VERTICAL CROSS SECTION



2
7 VERTICAL CROSS SECTION
Outswing sill - high dam



3
7 VERTICAL CROSS SECTION
Outswing sill



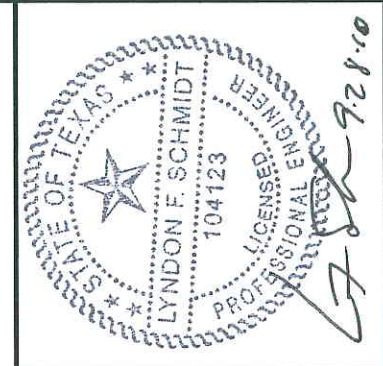
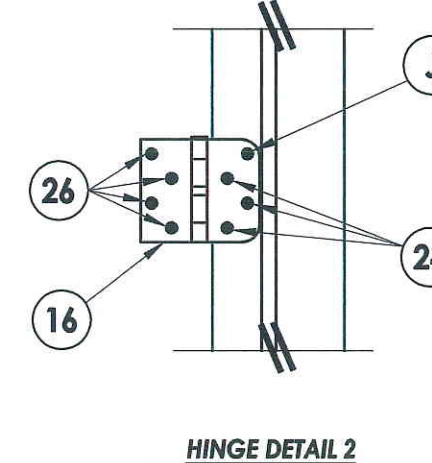
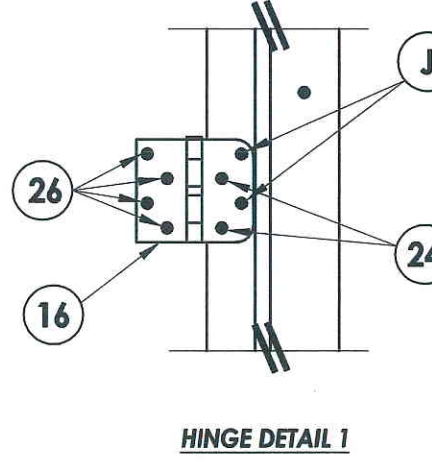
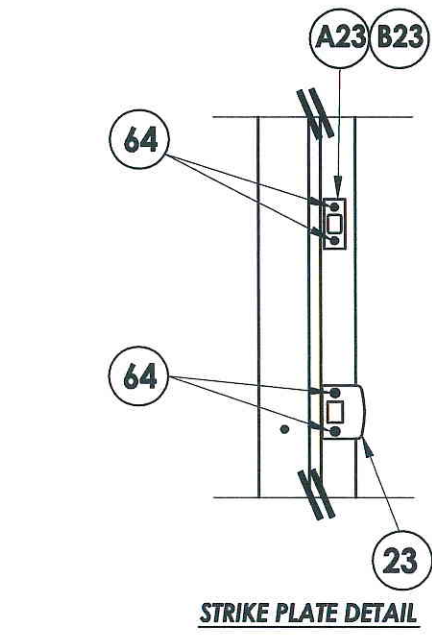
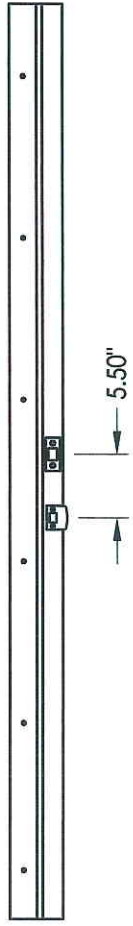
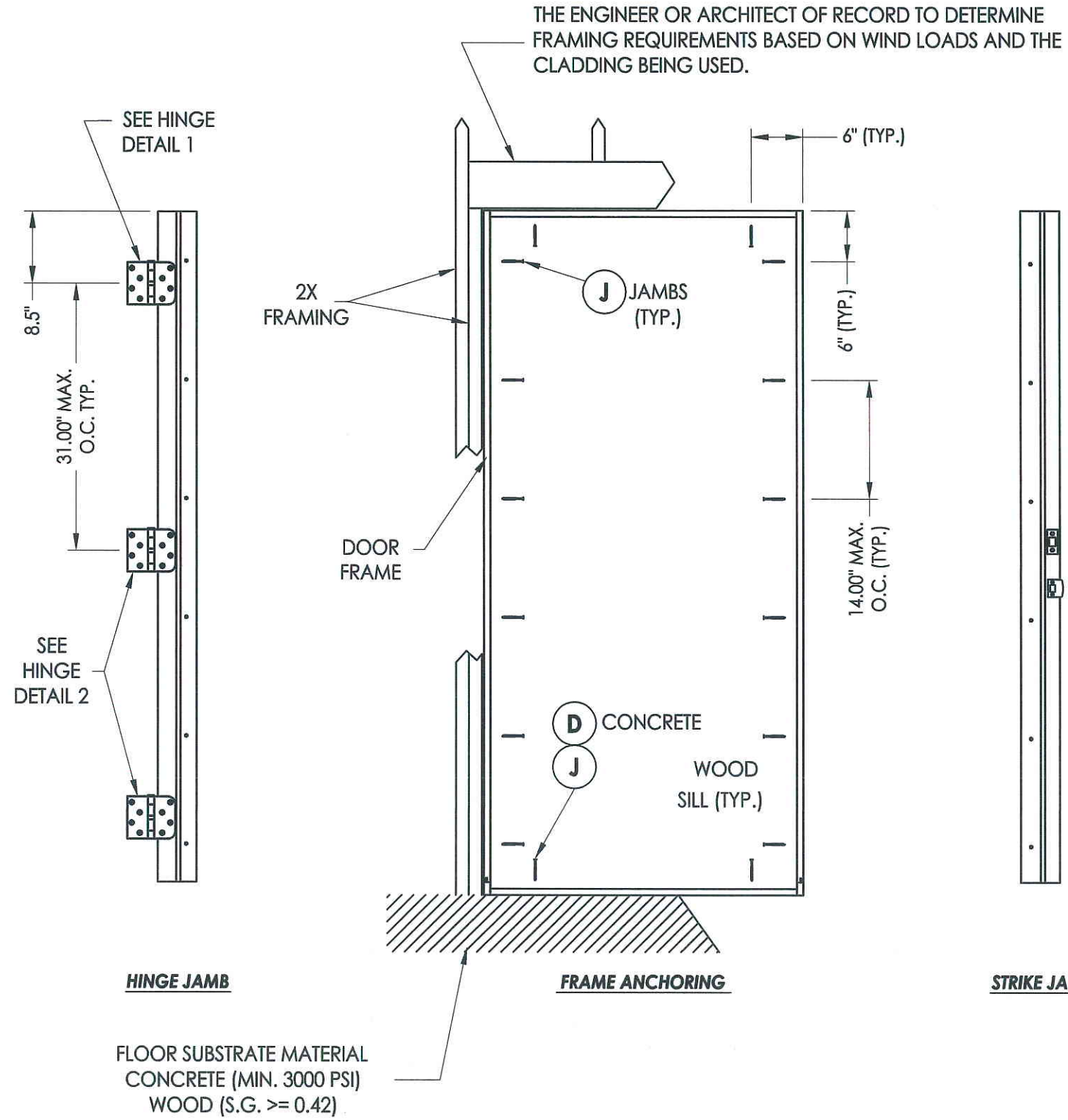
Documents Prepared By: Lyndon F. Schmidt, P.E.
TEXAS P.E. #104123

RW BUILDING CONSULTANTS, INC.
P.O. Box 230 Valrico FL 33595
Phone No.: 813.659.9197
TEXAS BOARD OF PROFESSIONAL ENGINEERS
CERTIFICATE OF REGISTRATION # F-11852

NOTE:
1. Sidelite screws (item #63) located at 3" from each end and on center line.

PRODUCT: RightConcept 6'8" FLUSH-GLAZED	
PART OR ASSEMBLY: VERTICAL CROSS SECTIONS	
NO.	DATE
BY	REVISIONS
DATE: 9/21/10	
SCALE: N.T.S.	
DWG. BY: JK	
CHK. BY: LFS	
DRAWING NO.: TX-4110	
SHEET 7 OF 12	

R:\A - Projects\Project Folders\Proj 1001-1100\pf1098\RWBC Drawings\TX-4110.dwg, 8.1



Documents Prepared By: Lyndon F. Schmidt, P.E.
TEXAS P.E. #104123

RW BUILDING CONSULTANTS, INC.
P.O. Box 230 Vairico FL. 33595
Phone No.: 813.659.9197

TEXAS BOARD OF PROFESSIONAL ENGINEERS
CERTIFICATE OF REGISTRATION # F-11852

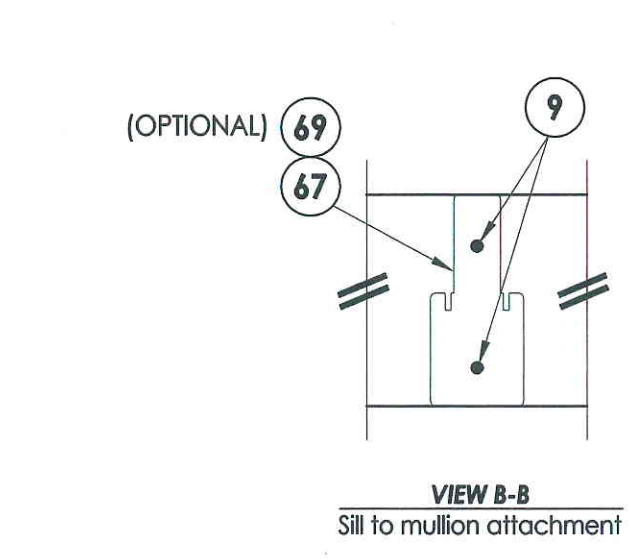
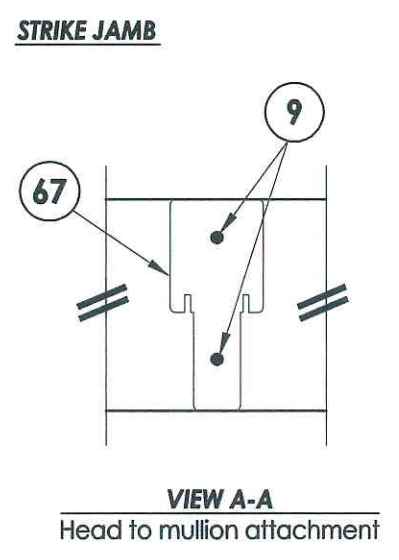
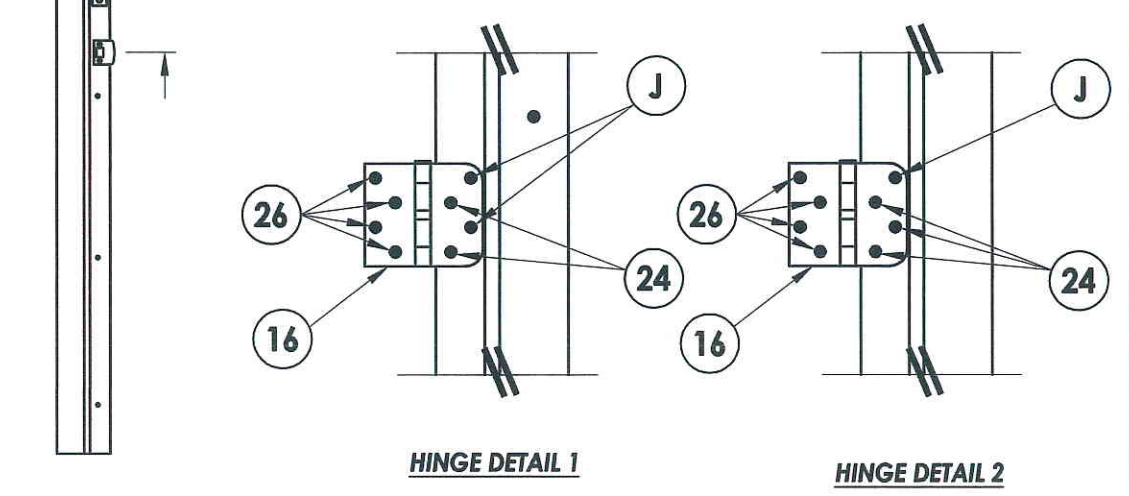
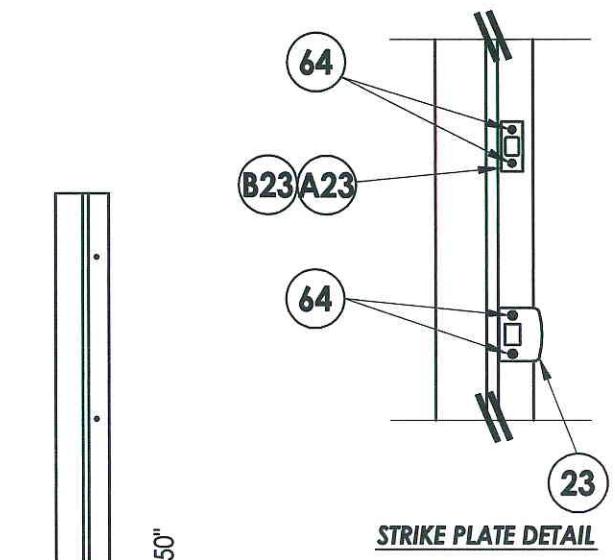
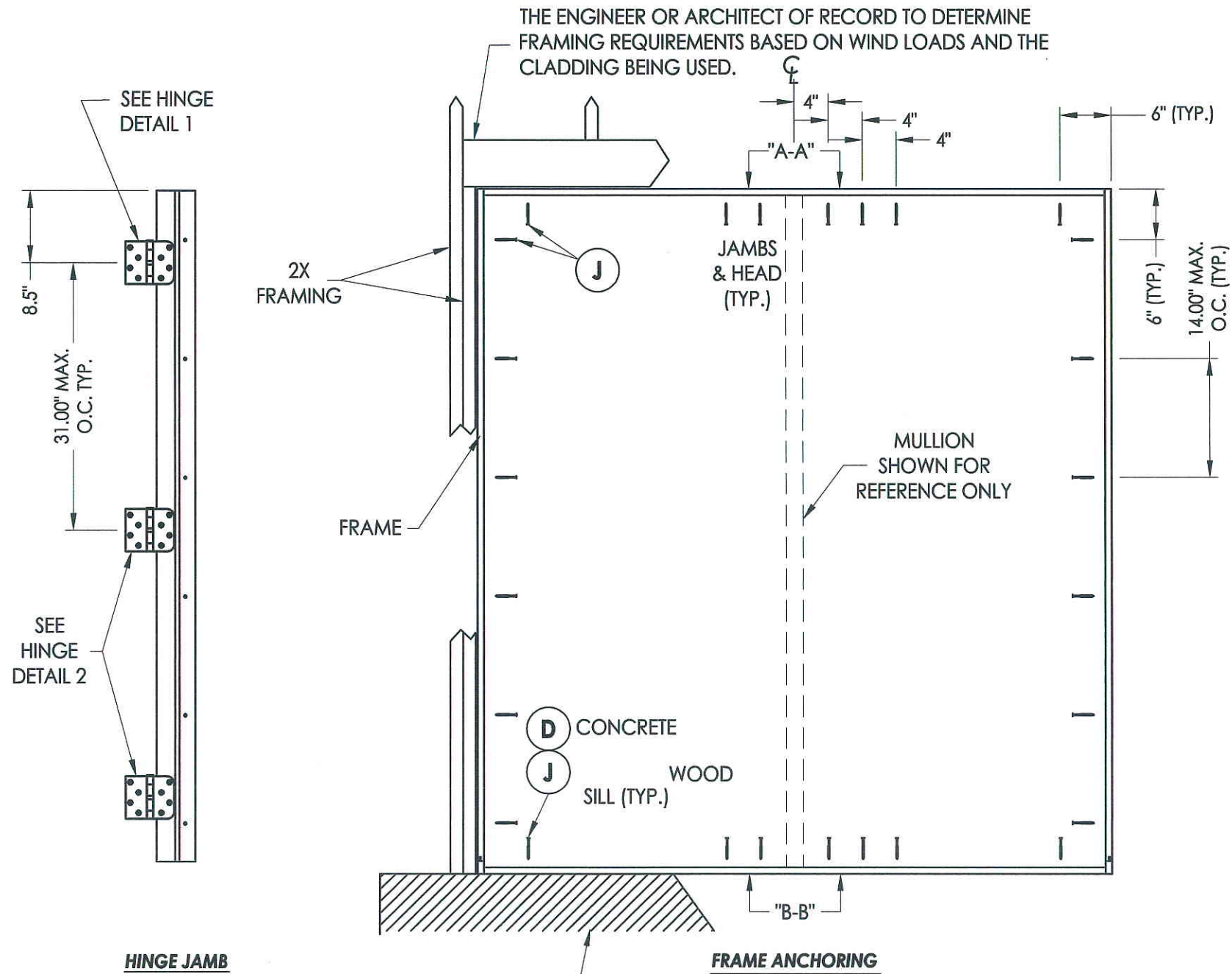
PRODUCT: RightConcept
6'8" FLUSH-GLAZED

PART OR ASSEMBLY: FRAME ANCHORING (X)

NO.	DATE	BY	REVISIONS

DATE: 9/21/10
SCALE: N.T.S.
DWG. BY: JK
CHK. BY: LFS
DRAWING NO.: TX-4110
SHEET 8 OF 12

R:\A - Projects\Project Folders\Proj 1001-1100\pf1098\RWBC Drawings\TX-4110.dwg, 9.1



Documents Prepared By: Lyndon F. Schmidt, P.E.
TEXAS P.E. #104123

RW BUILDING CONSULTANTS, INC.
P.O. Box 230 Valrico FL 33595
Phone No.: 813.659.9197

TEXAS BOARD OF PROFESSIONAL ENGINEERS
CERTIFICATE OF REGISTRATION # F-11852

PRODUCT: RightConcept
6'8" FLUSH-GLAZED

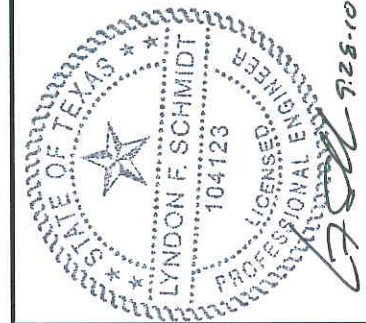
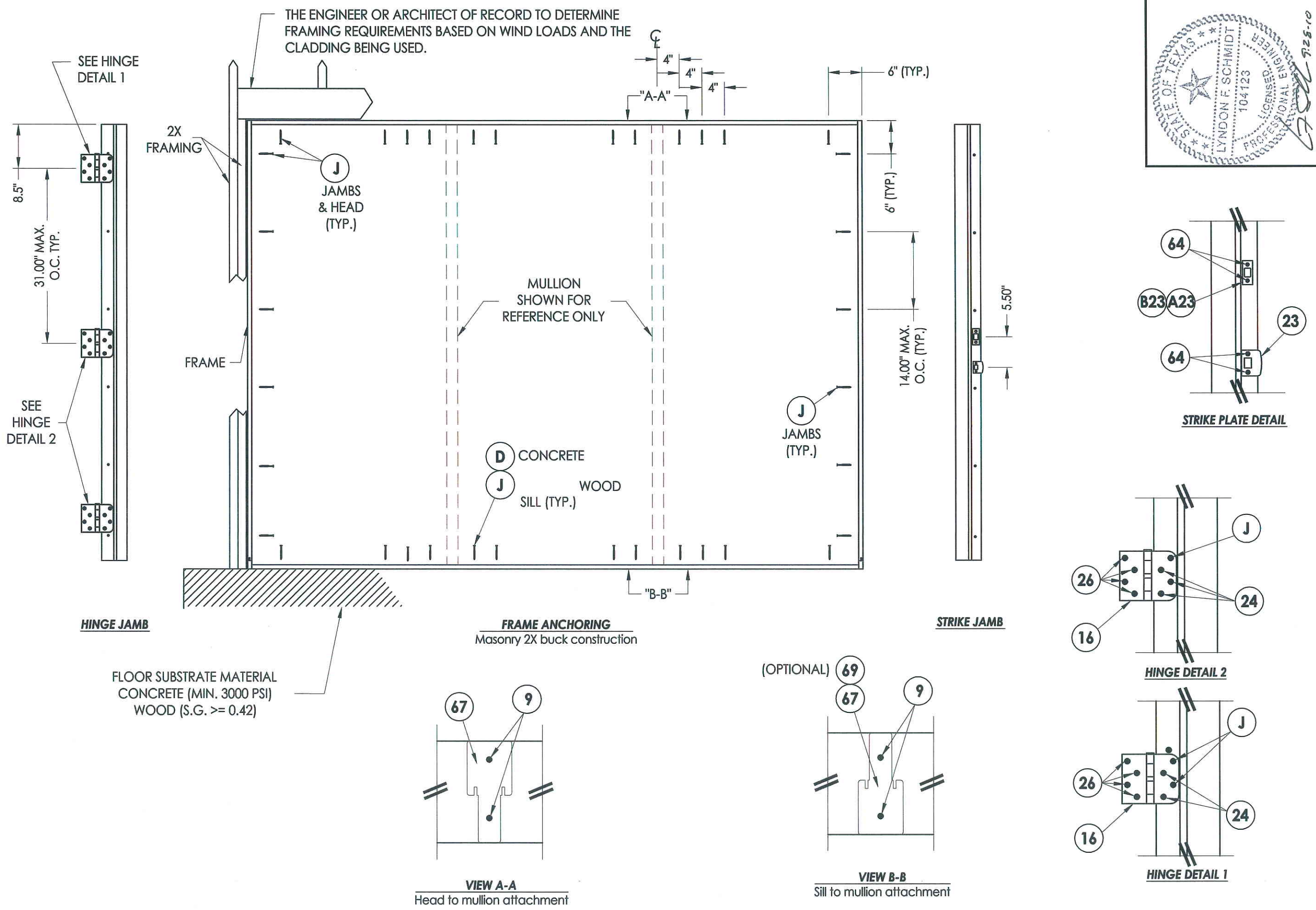
PART OR ASSEMBLY:
FRAME ANCHORING (XO/OX)

NO.	DATE	BY	REVISIONS

DATE: 9/21/10
SCALE: N.T.S.
DWG. BY: JK
CHK. BY: LFS
DRAWING NO.: TX-4110
SHEET 9 OF 12

© 2010 R W BUILDING CONSULTANTS INC

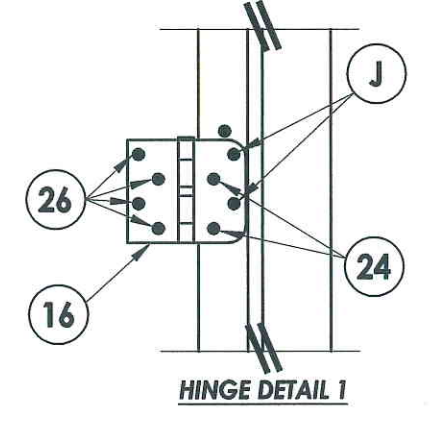
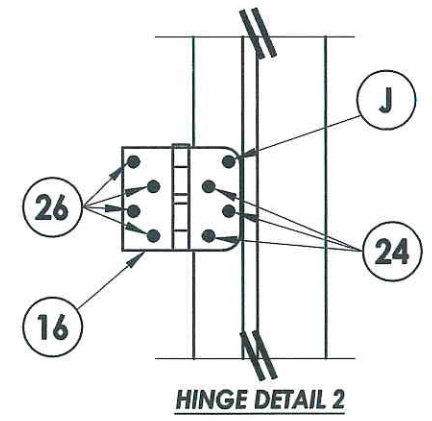
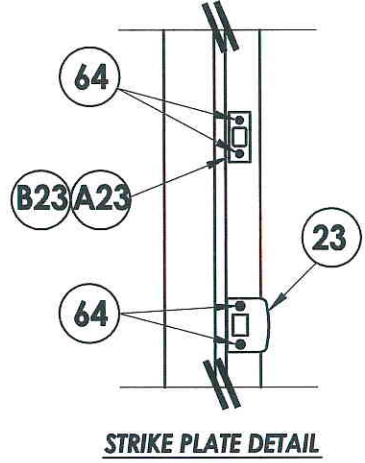
R:\A - Projects\Project Folders\Proj 1001-1100\p1098\RWBC Drawings\TX-4110.dwg, 10.1



Documents Prepared By: Lyndon F. Schmidt, P.E.
TEXAS P.E. #104123

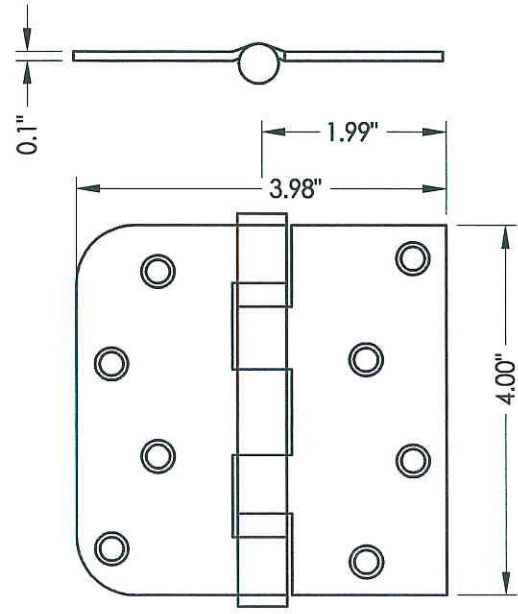
RW BUILDING CONSULTANTS, INC.
P.O. Box 230 Valrico FL 33595
Phone No.: 813.659.9197

TEXAS BOARD OF PROFESSIONAL ENGINEERS
CERTIFICATE OF REGISTRATION # F-11852

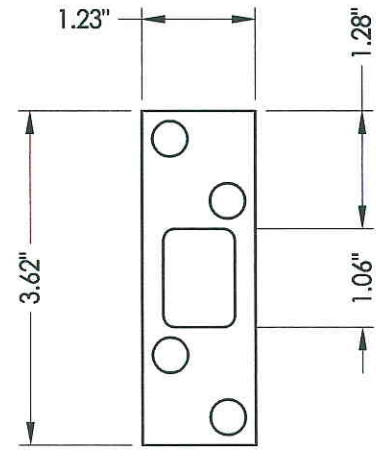


PRODUCT:	RightConcept 6'8" FLUSH-GLAZED	
PART OR ASSEMBLY:	FRAME ANCHORING (OXO)	
NO.	DATE	BY
REVISIONS		
DATE:	9/21/10	
SCALE:	N.T.S.	
DWG. BY:	JK	
CHK. BY:	LFS	
DRAWING NO.:	TX-4110	
SHEET	10 OF 12	

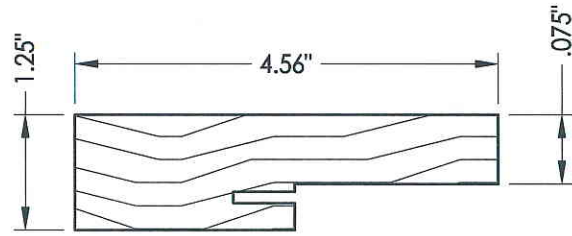
© 2010 R W BUILDING CONSULTANTS INC



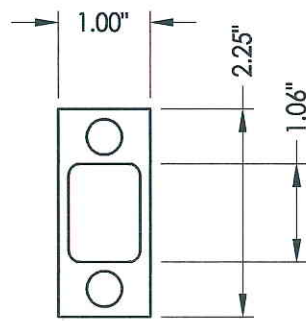
16 HINGE



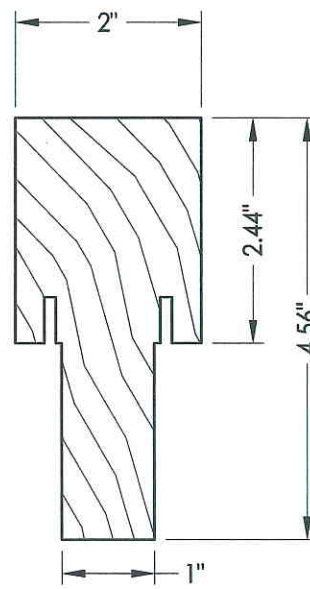
B23 DEADBOLT PLATE 4-HOLE



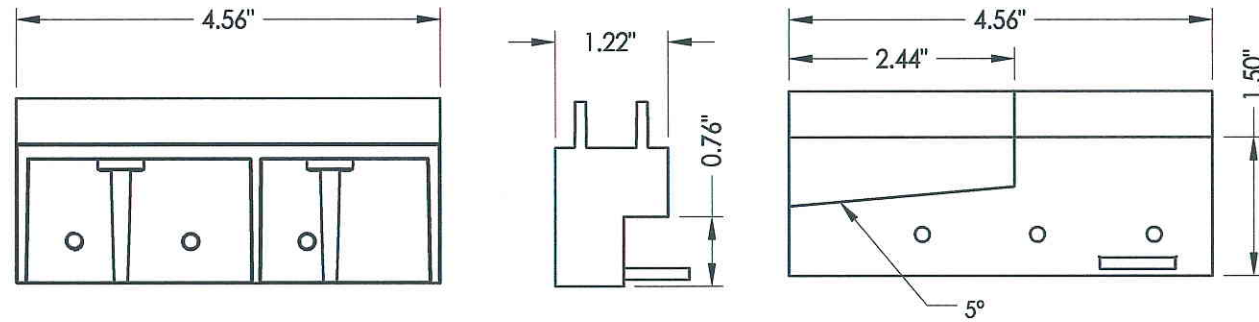
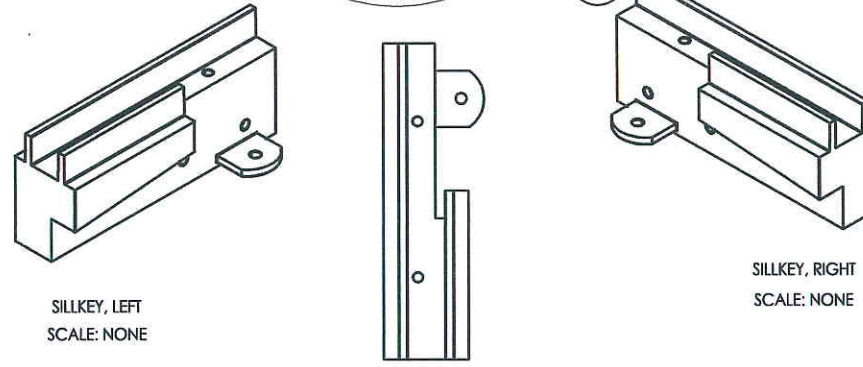
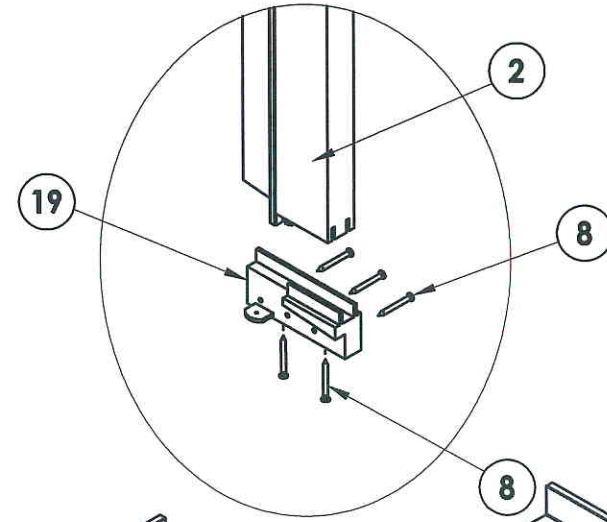
4 3 2 SIDE & HEAD JAMBS



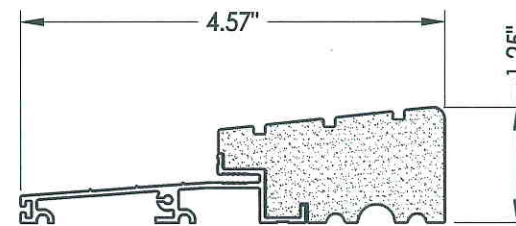
A23 DEADBOLT PLATE 2-HOLE



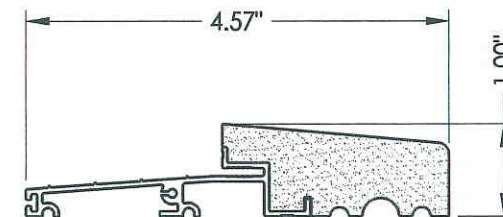
67 INTEGRAL MULLION



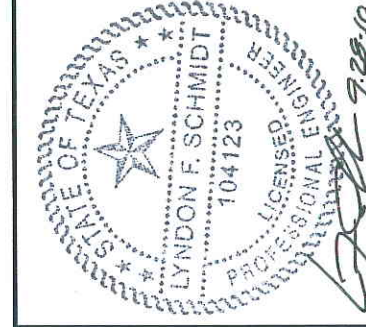
19 SILLKEY DETAILS Optional



25 OUTSWING THRESHOLD High-dam option



27 OUTSWING THRESHOLD



Documents Prepared By: Lyndon F. Schmidt, P.E. TEXAS P.E. #104123

RW BUILDING CONSULTANTS, INC. P.O. Box 230 Valrico FL 33595 Phone No.: 813.659.9197

TEXAS BOARD OF PROFESSIONAL ENGINEERS CERTIFICATE OF REGISTRATION # F-11852

PRODUCT: RightConcept 6'8 FLUSH-GLAZED

PART OR ASSEMBLY: COMPONENTS

NO.	DATE	BY

DATE: 9/21/10
SCALE: N.T.S.
DWG. BY: JK
CHK. BY: LFS
DRAWING NO.: TX-4110
SHEET 11 OF 12



BILL OF MATERIALS		
ITEM #	DESCRIPTION	MATERIAL
B	2X BUCK SG >= 0.55	WOOD
C	1/4" MAX. SHIM SPACE	-
D	1/4" X 2-3/4" ELCO OR ITW CONCRETE SCREW	STEEL
J	#10 X 2-1/2" PFH WOOD SCREW	STEEL
2	STRIKE JAMB - FINGER-JOINT PINE (4 - 9/16") - SG >= 0.42	WOOD
3	HINGE JAMB - FINGER-JOINT PINE (4 - 9/16") - SG >= 0.42	WOOD
4	HEAD - FINGER-JOINT PINE (4 - 9/16") - SG >= 0.42	WOOD
7	DOOR PANEL - SEE DOOR PANEL DETAIL SHEET FOR CONSTRUCTION DETAILS	-
8	#6 X 1-1/4 PFH DRYWALL SCREW	STEEL
9	#9 X 2-1/4" PFH WOOD SCREW	STEEL
12	WEATHER STRIP QEBD650 Q-LON	-
16	3.983" X 4.0" HINGE MIN 0.098" THICK	STEEL
19	SILLKEY (OPTIONAL)	PC/ASA
23	STRIKE PLATE	STEEL
A23	DEADBOLT PLATE (2-HOLE)	STEEL
B23	DEADBOLT PLATE (4-HOLE)	STEEL
24	#9 X 5/8" PFH WS	STEEL
25	OUTSWING HIGH-DAM THRESHOLD ALUMINUM W/ COMPOSITE SUBSTRATE	ALUM./ COMP.
26	#9 X 1.0" PFH WS	STEEL
27	OUTSWING THRESHOLD ALUMINUM W/ COMPOSITE SUBSTRATE	ALUM./ COMP.
43	PVC & ALUMINUM SPACER SYSTEM	PVC/ ALUM.
60	SIDELITE SPACER - OUTSWING	PVC
62	QUARTER ROUND	WOOD
63	#9 x 2-1/4" PFH SCREW	STEEL
64	#8 x 2" PFH SCREW	STEEL
66	SIDELITE PANEL - SEE SIDELITE PANEL DETAIL SHEET FOR CONSTRUCTION DETAILS	-
67	INTEGRAL MULLION - FINGER JOINT PINE (SG >= 0.42)	WOOD
69	MULLION BASE KIT (OPTIONAL)	PC/ASA

CONCRETE ANCHOR NOTES:

1. Substitution of equal concrete anchors from a different supplier may have different edge distance and center distance requirements.
2. Concrete anchor locations at the corners may be adjusted to maintain the min. edge distance to mortar joints. If concrete anchor locations noted as "MAX. ON CENTER" must be adjusted to maintain the min. edge distance to mortar joints, additional concrete anchors may be required to ensure the "MAX. ON CENTER" dimensions are not exceeded.
3. Concrete anchor table:

ANCHOR TYPE	ANCHOR SIZE	MIN. EMBEDMENT	MIN. CLEARANCE TO MASONRY EDGE	MIN. CLEARANCE TO ADJACENT ANCHOR
ITW	1/4"	1-1/4"	2-1/2"	3"
ELCO	1/4"	1-1/4"	1"	4"

Documents Prepared By: Lyndon F. Schmidt, P.E. TEXAS P.E. #104123		RW BUILDING CONSULTANTS, INC. P.O. Box 230 Valrico FL 33595 Phone No.: 813.659.9197		TEXAS BOARD OF PROFESSIONAL ENGINEERS CERTIFICATE OF REGISTRATION # F-11852	
PRODUCT: RightConcept 6'8 FLUSH-GLAZED	PART OR ASSEMBLY: BILL OF MATERIALS		REVISIONS		
			NO.	DATE	BY
DATE: 9/21/10					
SCALE: N.T.S.					
DWG. BY: JK					
CHK. BY: LFS					
DRAWING NO.: TX-4110					
SHEET 12 OF 12					