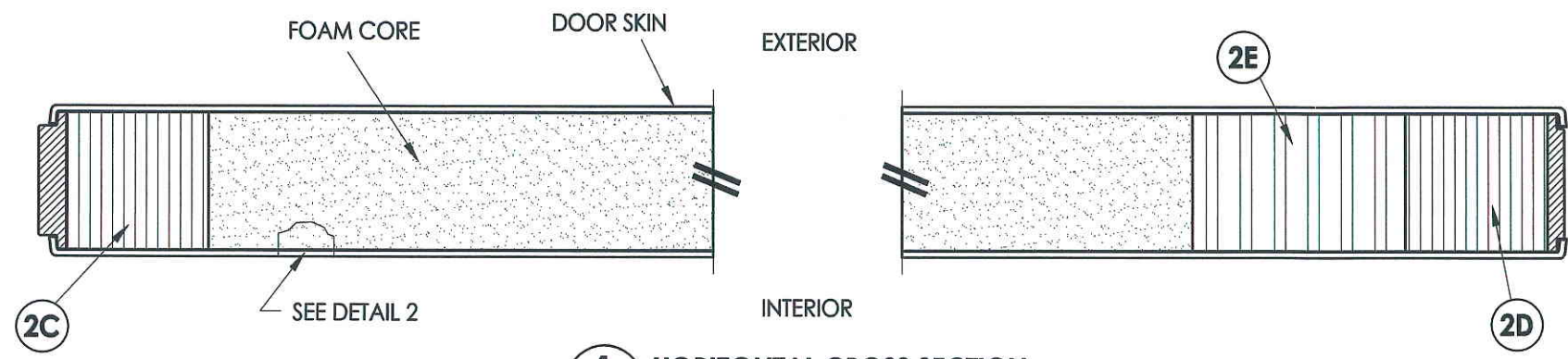
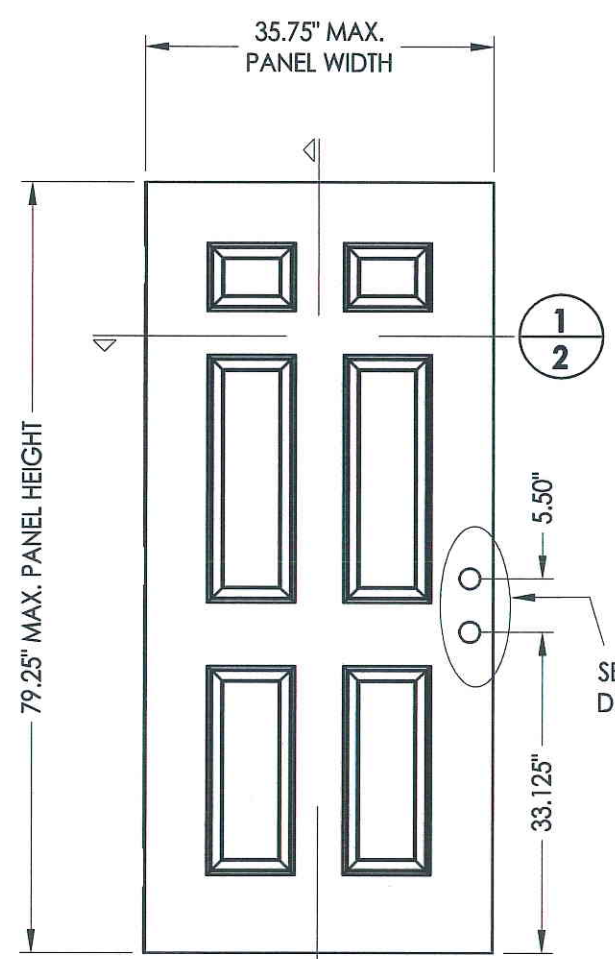


R:\A - Projects\Project Folders\Proj 1001-1100\pf1098\RWBC Drawings\TX-4107.dwg, 2.2

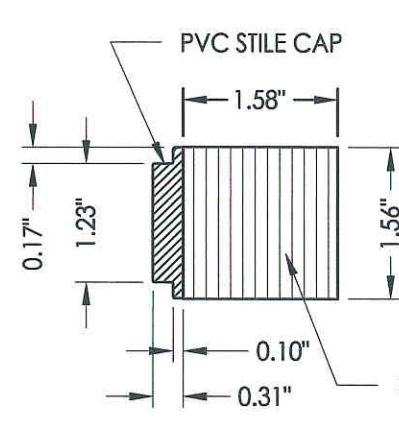


1
2 **HORIZONTAL CROSS SECTION**

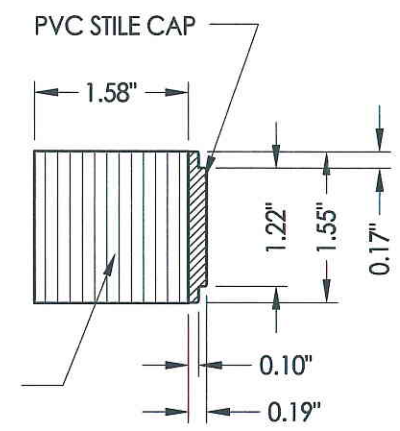


7 **DOOR PANEL**
Fiberglass

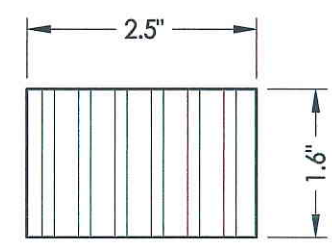
FIBERGLASS DOOR SKIN: MIN. 0.079\"/>



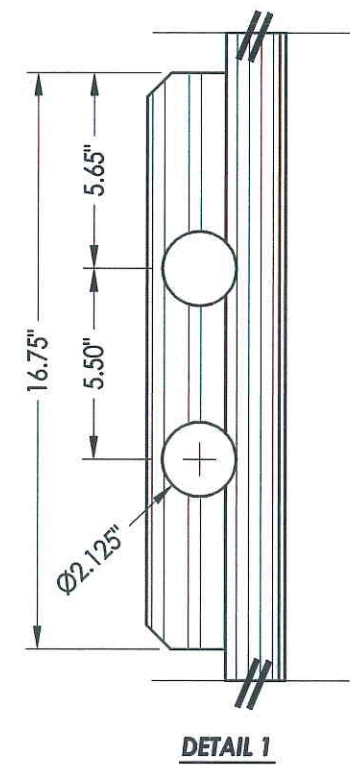
2C **HINGE STILE**
PVC/LVL



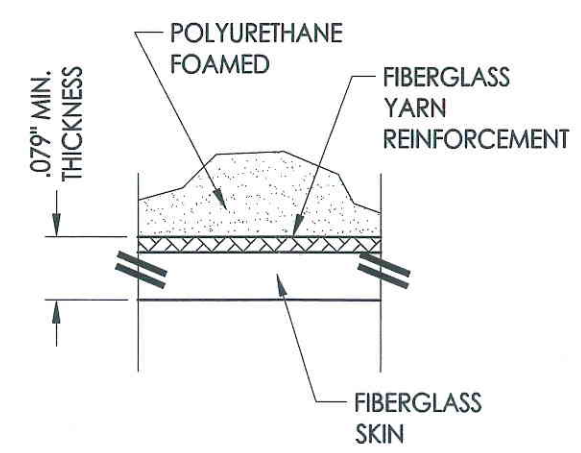
2D **LATCH STILE**
PVC/LVL



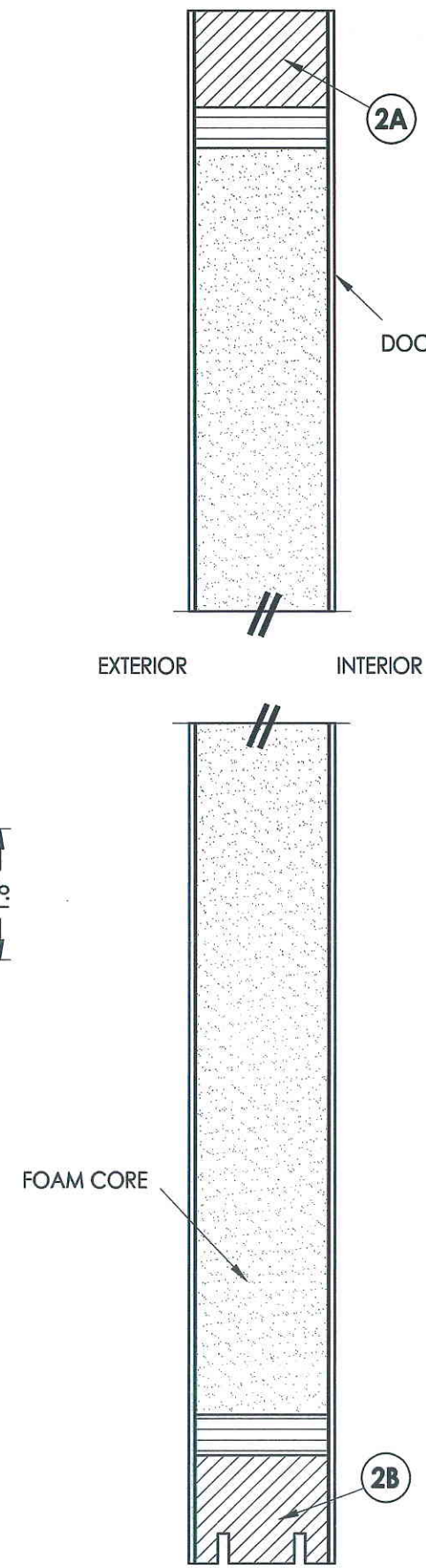
2E **LOCK BLOCK**
LVL



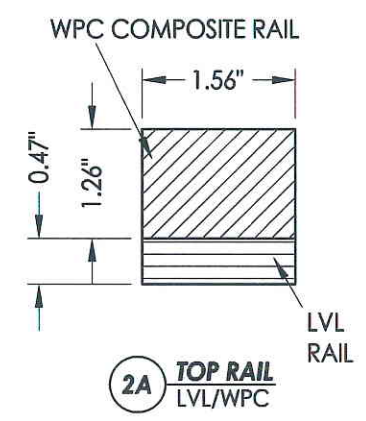
DETAIL 1



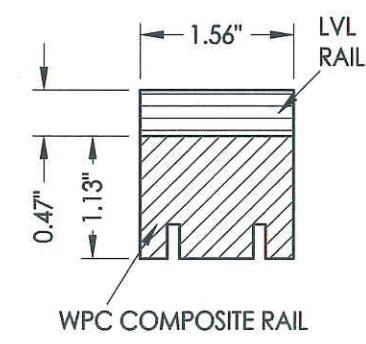
DETAIL 2



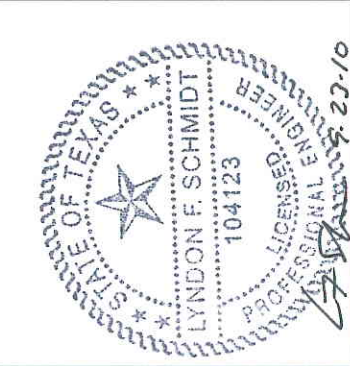
2
2 **VERTICAL CROSS SECTION**



2A **TOP RAIL**
LVL/WPC



2B **BOTTOM RAIL**
LVL/WPC



Documents Prepared By: Lyndon F. Schmidt, P.E.
TEXAS P.E. #104123

RW BUILDING CONSULTANTS, INC.
P.O. Box 230 Valrico FL 33595
Phone No.: 813.659.9197

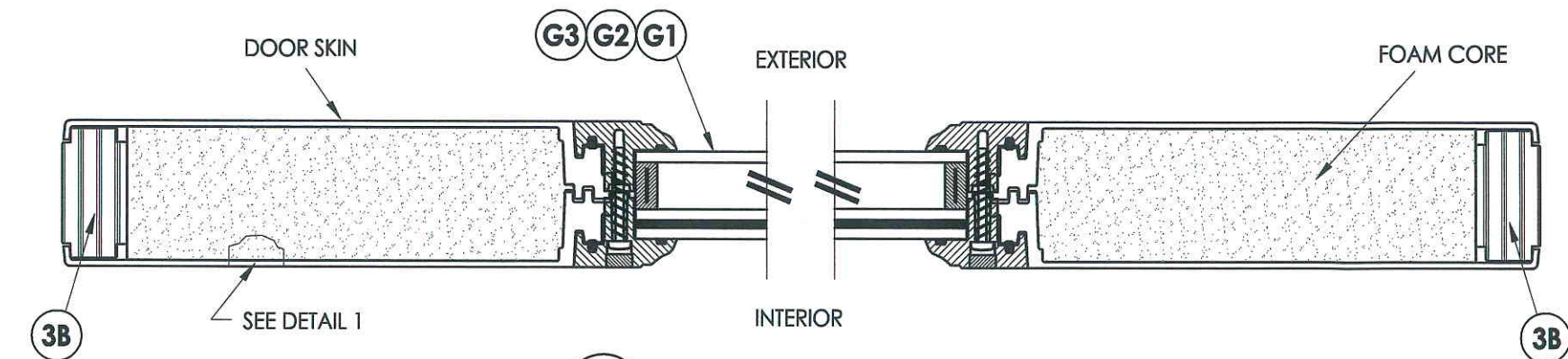
TEXAS BOARD OF PROFESSIONAL ENGINEERS
CERTIFICATE OF REGISTRATION # F-11852

PRODUCT:	RightConcept 6'8 PREMIUM OPAQUE
PART OR ASSEMBLY:	DOOR PANEL CONSTRUCTION DETAILS

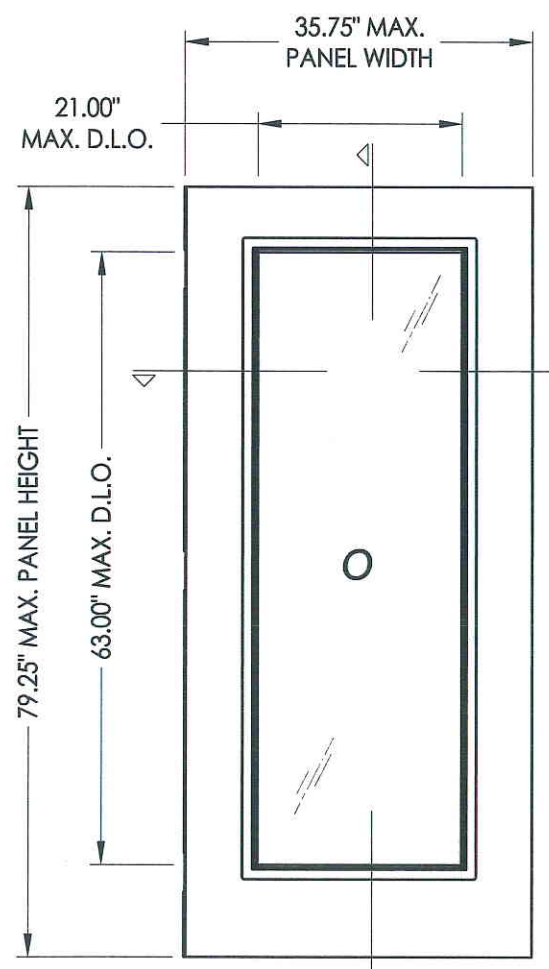
NO.	DATE	BY	REVISIONS

DATE:	9/21/10
SCALE:	N.T.S.
DWG. BY:	JK
CHK. BY:	LFS
DRAWING NO.:	TX-4108
SHEET	2 OF 11

R:\A - Projects\Project Folders\Proj 1001-1100\pf1098\RWBC Drawings\TX-4107.dwg, 3.2



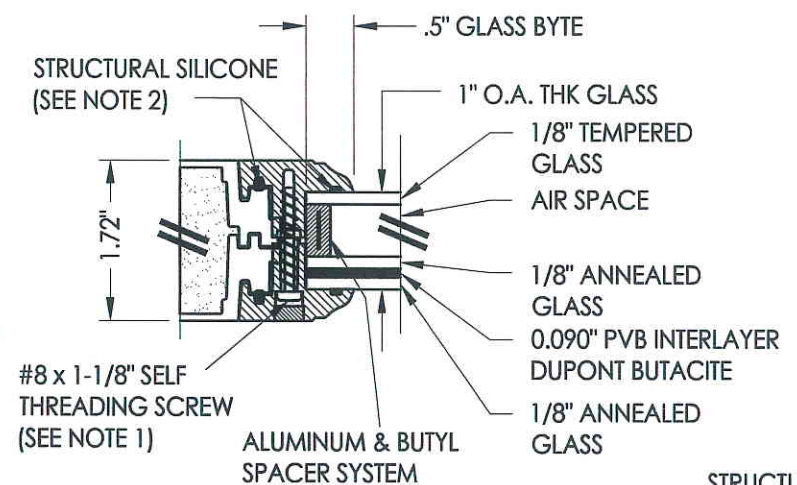
1
3 HORIZONTAL CROSS SECTION



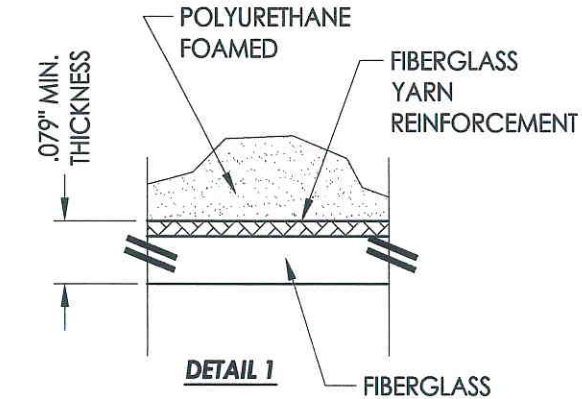
66 SIDELITE PANEL
Fiberglass

FIBERGLASS SIDELITE SKIN: MIN. 0.079\"/>

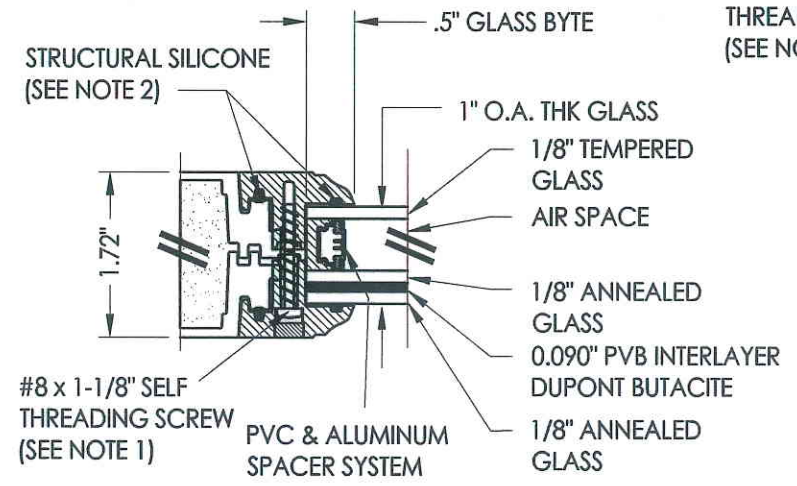
- NOTES:**
- Spacing for lite frame screws is as follows:
Sides: 11\"/>
 - Structural Silicone: Dow 995, Capstone or Dongyang



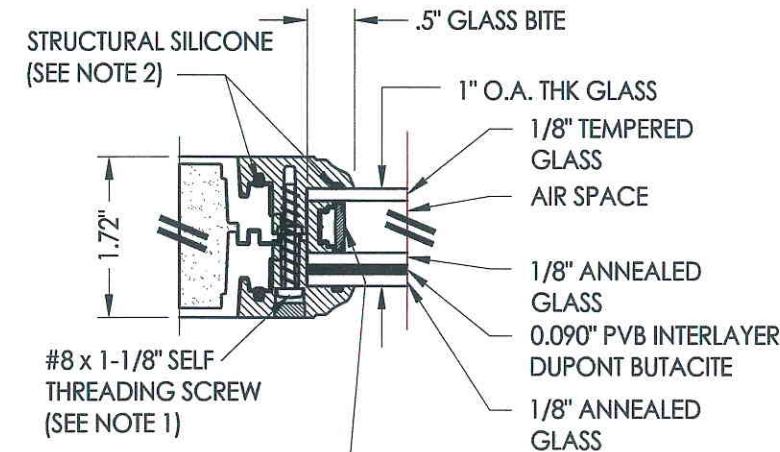
G1 GLAZING DETAIL
Flushed Glazed Lite Frame (Trinity)
PC/ASA



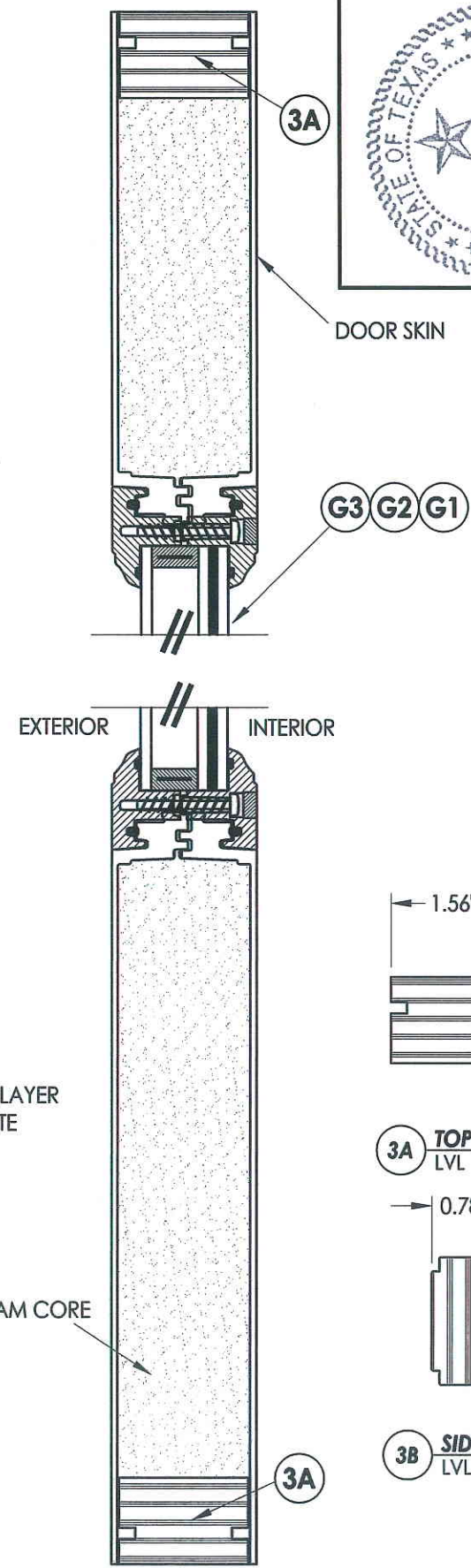
DETAIL 1



G2 GLAZING DETAIL
Flushed Glazed Lite Frame (Trinity)
PC/ASA



G3 GLAZING DETAIL
Flushed Glazed Lite Frame (Trinity)
PC/ASA



2
3 VERTICAL CROSS SECTION



Documents Prepared By: Lyndon F. Schmidt, P.E.
TEXAS P.E. #104123

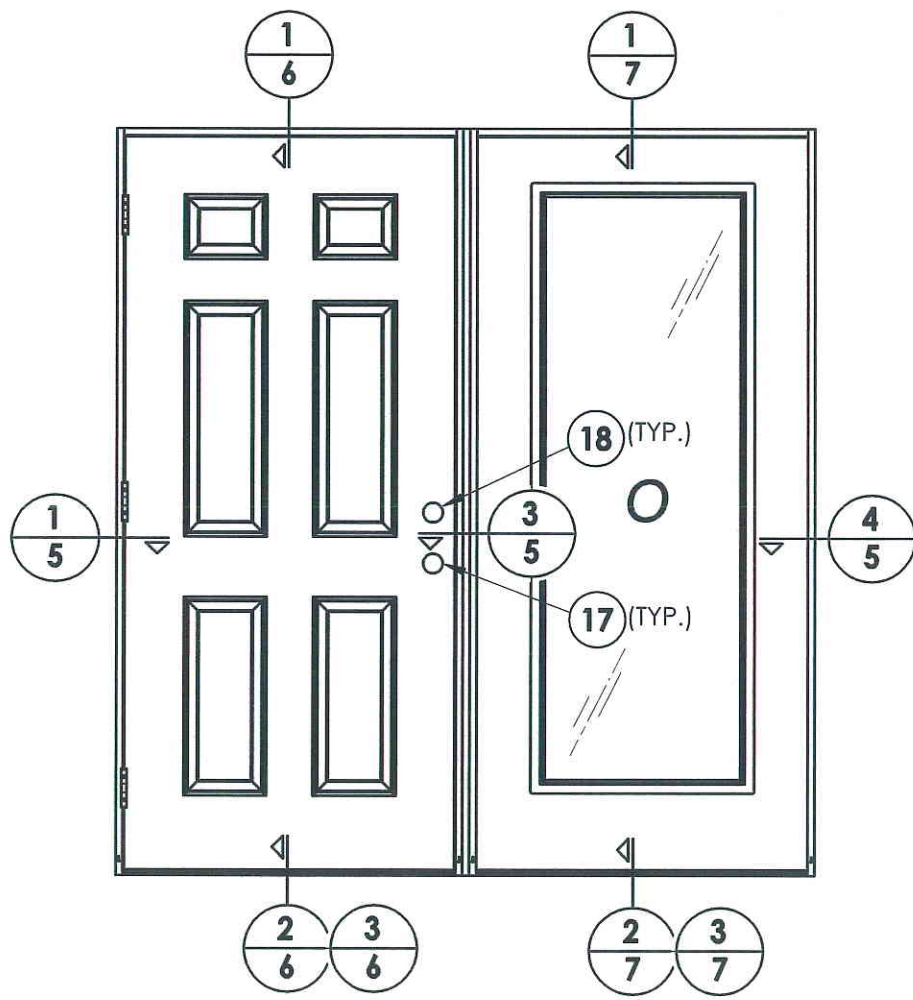
RW BUILDING CONSULTANTS, INC.
P.O. Box 230 Vairico FL 33595
Phone No.: 813.659.9197

TEXAS BOARD OF PROFESSIONAL ENGINEERS
CERTIFICATE OF REGISTRATION # F-11852

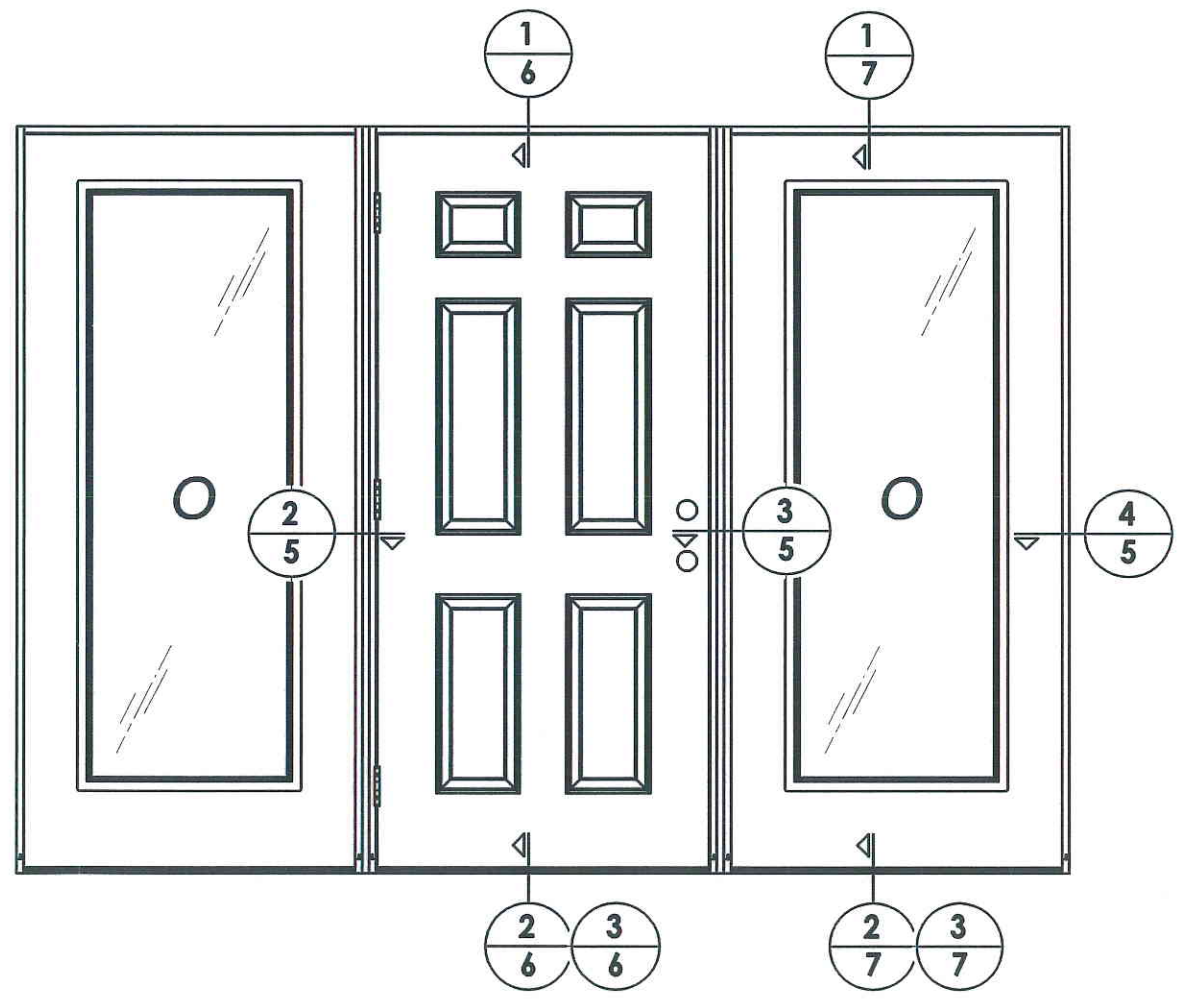
PRODUCT: RightConcept
6'8\"/>

NO.	DATE	BY	REVISIONS

DATE: 9/21/10
SCALE: N.T.S.
DWG. BY: JK
CHK. BY: LFS
DRAWING NO.: TX-4108
SHEET 3 OF 11

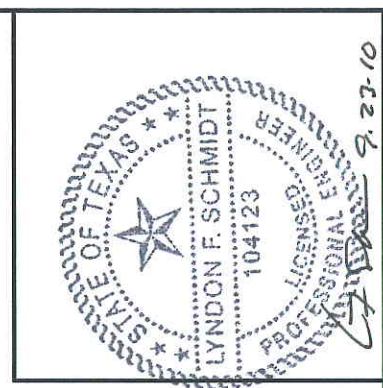


ELEVATION (XO / OX)



ELEVATION (OXO)

HARDWARE CHART		
MANUFACTURER	MODEL	ITEM #
KWIKSET	LOCK: 660 Combo	17
	DEADBOLT: 660 Combo	18
KWIKSET	LOCK: 740	17
	DEADBOLT: 780	18



Documents Prepared By: Lyndon F. Schmidt, P.E.
 TEXAS P.E. #104123

RW BUILDING CONSULTANTS, INC.
 P.O. Box 230 Valrico FL, 33595
 Phone No.: 813.659.9197

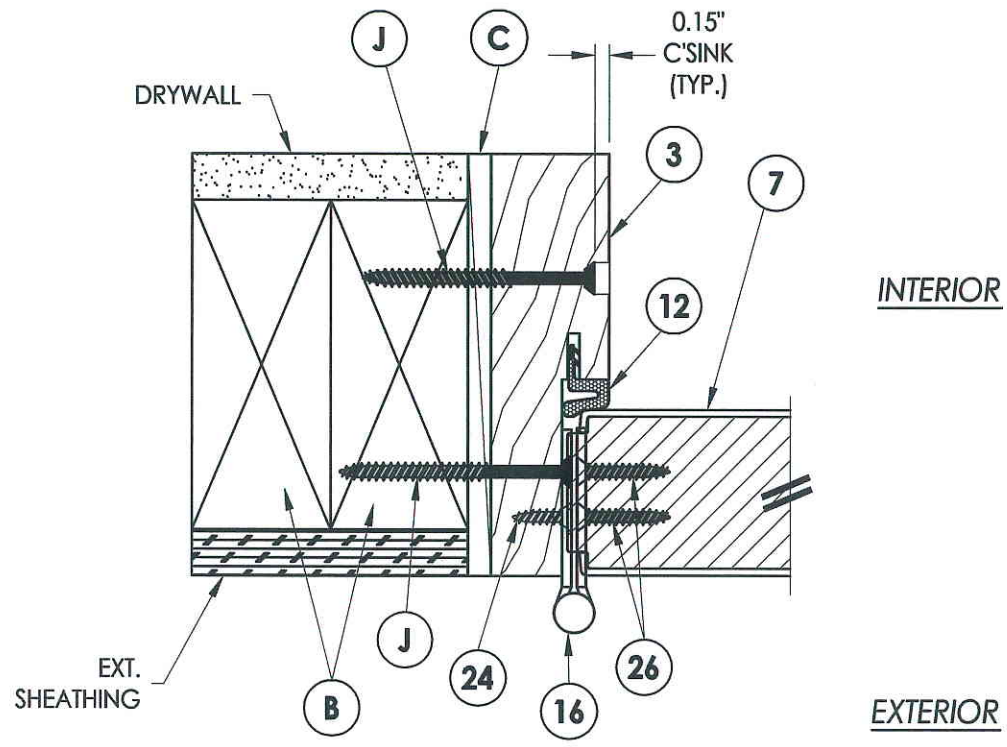
TEXAS BOARD OF PROFESSIONAL ENGINEERS
 CERTIFICATE OF REGISTRATION # F-11852

PRODUCT: RightConcept
 6'8 PREMIUM OPAQUE

PART OR ASSEMBLY:
 ELEVATIONS

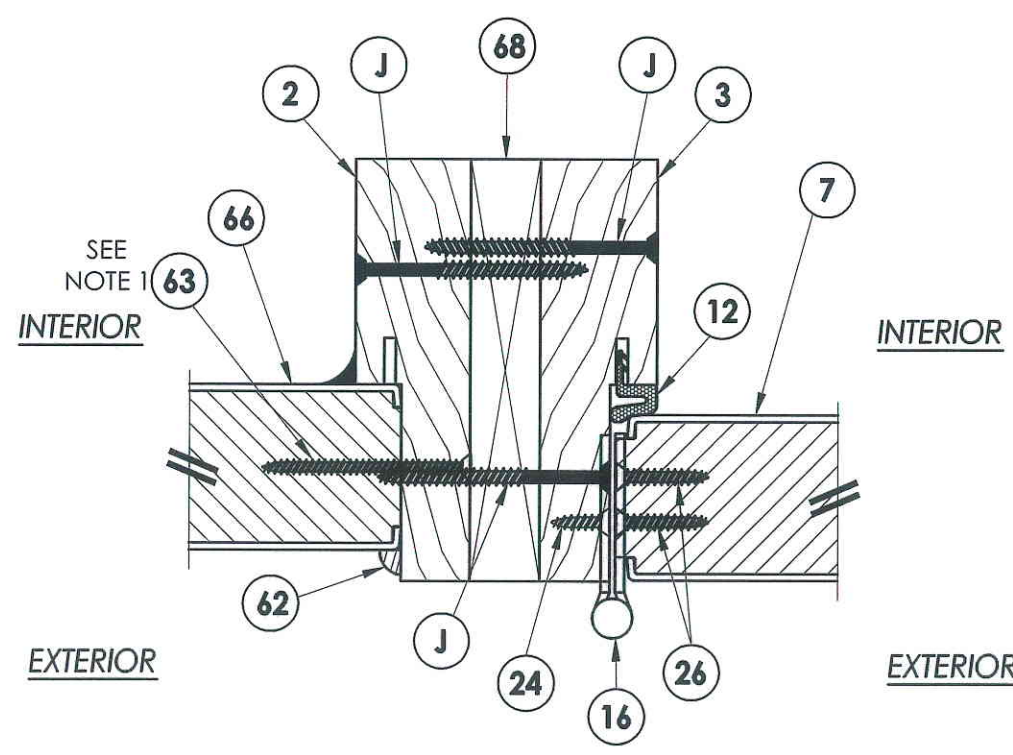
NO.	DATE	BY

DATE: 9/21/10
 SCALE: N.T.S.
 DWG. BY: JK
 CHK. BY: LFS
 DRAWING NO.: TX-4108
 SHEET 4 of 11

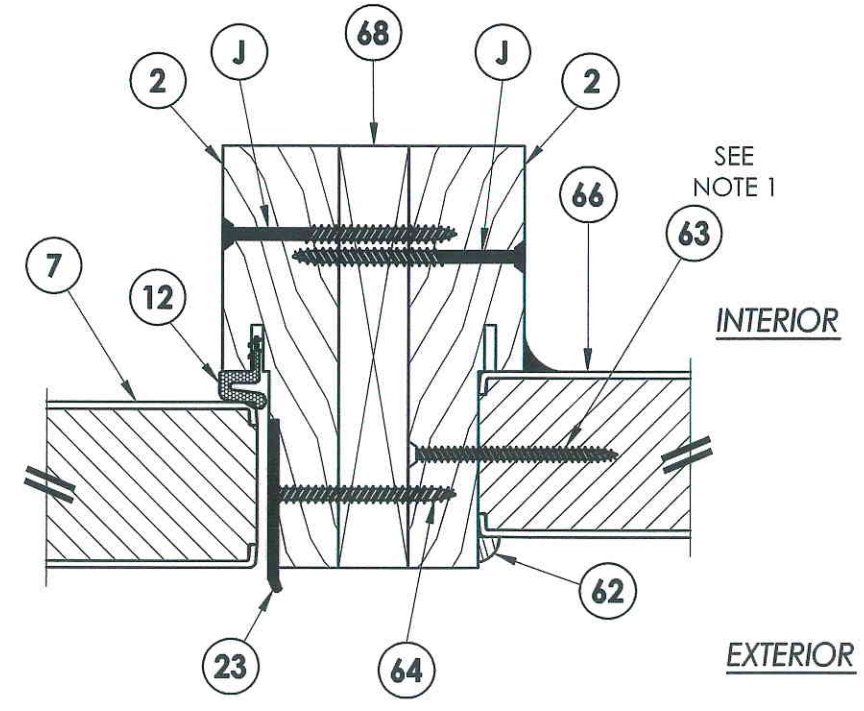


1
5 HORIZONTAL CROSS SECTION

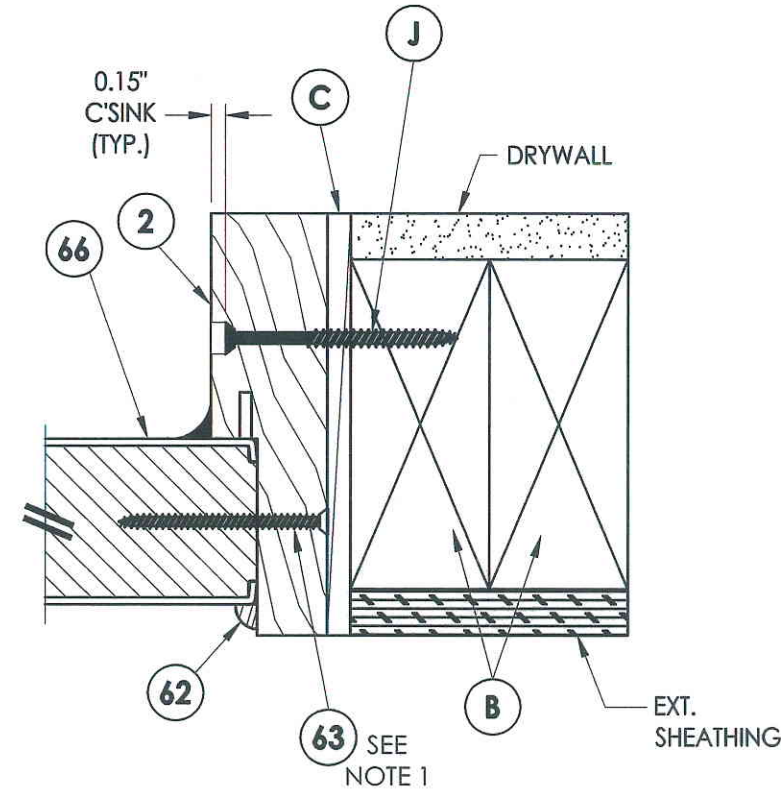
NOTE:
1. Sidelite screws (item #63) located at 6" from each end then 3 equal spaces for a total of 4 screws.



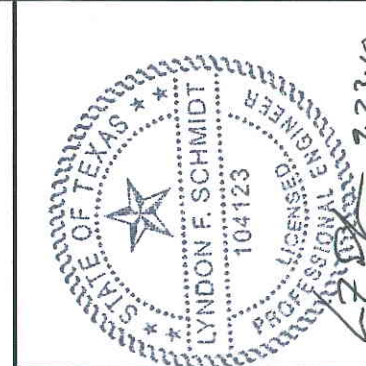
2
5 HORIZONTAL CROSS SECTION



3
5 HORIZONTAL CROSS SECTION



4
5 HORIZONTAL CROSS SECTION



Documents Prepared By: Lyndon F. Schmidt, P.E.
TEXAS P.E. #104123

RW BUILDING CONSULTANTS, INC.
P.O. Box 230 Vairico FL, 33595
Phone No.: 813.659.9197

TEXAS BOARD OF PROFESSIONAL ENGINEERS
CERTIFICATE OF REGISTRATION # F-11852

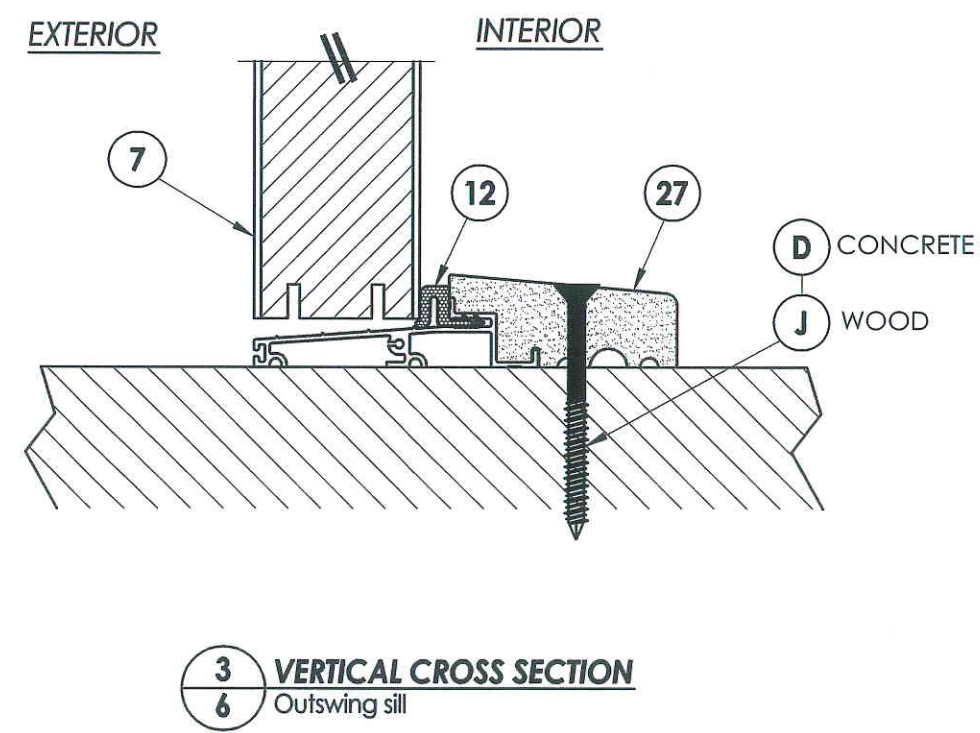
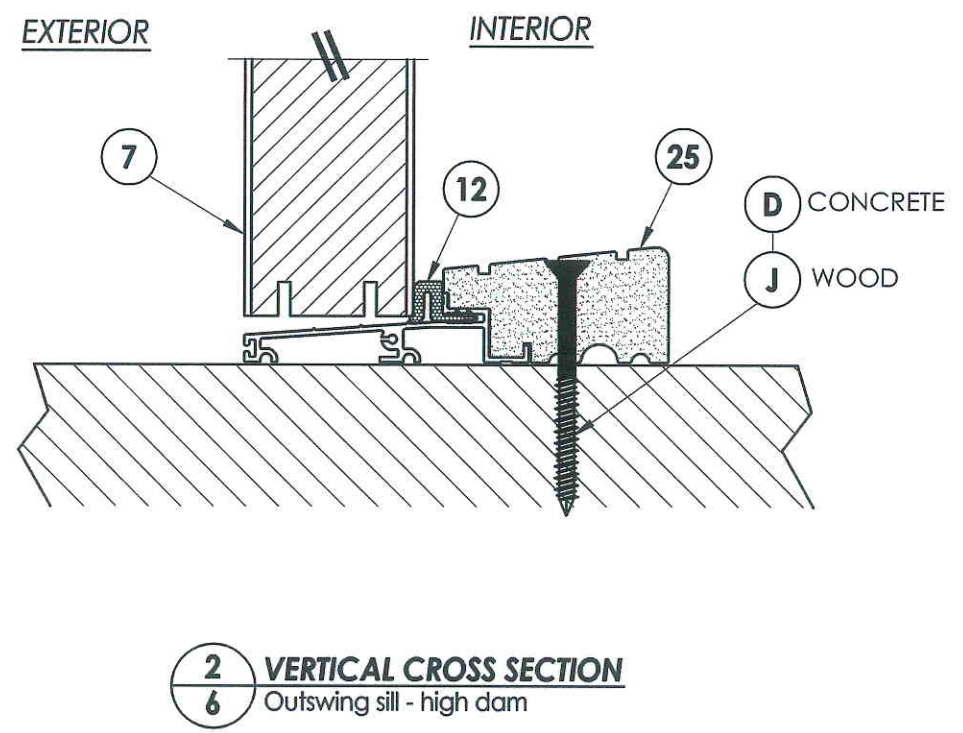
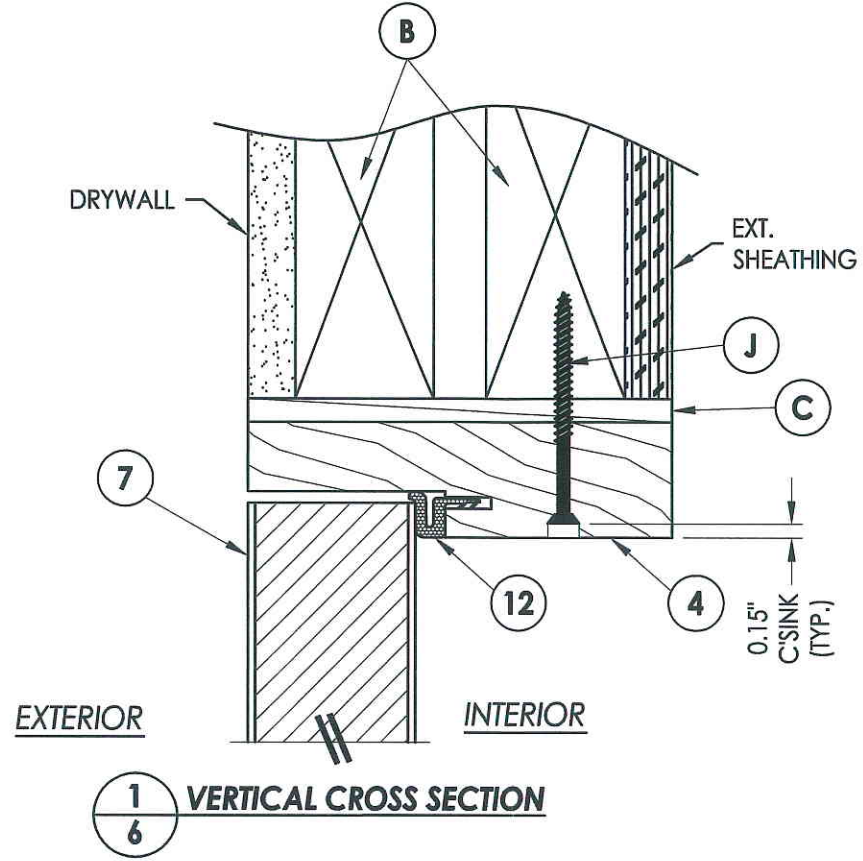
PRODUCT: RightConcept
6'8 PREMIUM OPAQUE

PART OR ASSEMBLY:
HORIZONTAL CROSS SECTIONS

NO.	DATE	BY	REVISIONS

DATE: 9/21/10
SCALE: N.T.S.
DWG. BY: JK
CHK. BY: LFS
DRAWING NO.: TX-4108
SHEET 5 OF 11

R:\A - Projects\Project Folders\Proj 1001-1100\pf1098\RWBC Drawings\TX-4107.dwg, 6.2



Documents Prepared By: Lyndon F. Schmidt, P.E.
TEXAS P.E. #104123

RW BUILDING CONSULTANTS, INC.
P.O. Box 230 Valrico FL 33595
Phone No.: 813.659.9197

TEXAS BOARD OF PROFESSIONAL ENGINEERS
CERTIFICATE OF REGISTRATION # F-11852

PRODUCT: RightConcept
6'8 PREMIUM OPAQUE

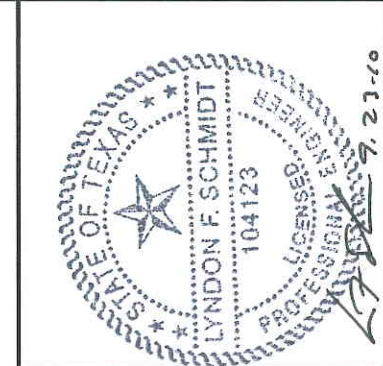
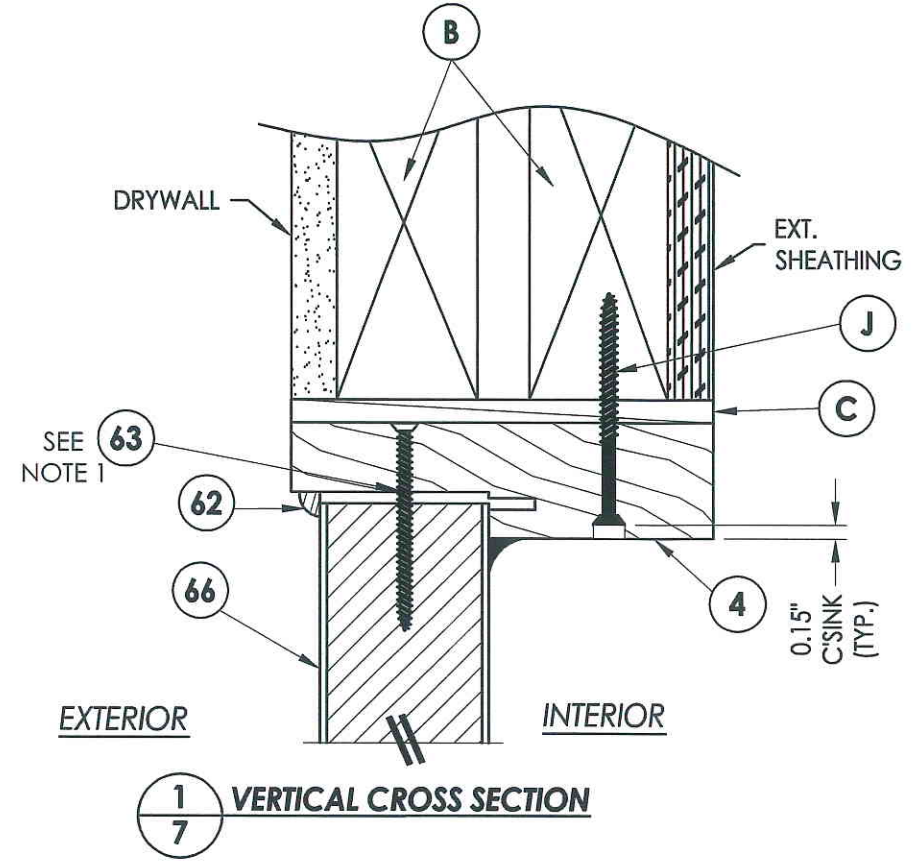
PART OR ASSEMBLY:

VERTICAL CROSS SECTIONS

NO.	DATE	BY	REVISIONS

DATE: 9/21/10
SCALE: N.T.S.
DWG. BY: JK
CHK. BY: LFS
DRAWING NO.: TX-4108
SHEET 6 OF 11

R:\A - Projects\Project Folders\Proj 1001-1100\pf1098\RWBC Drawings\TX-4107.dwg, 7.2

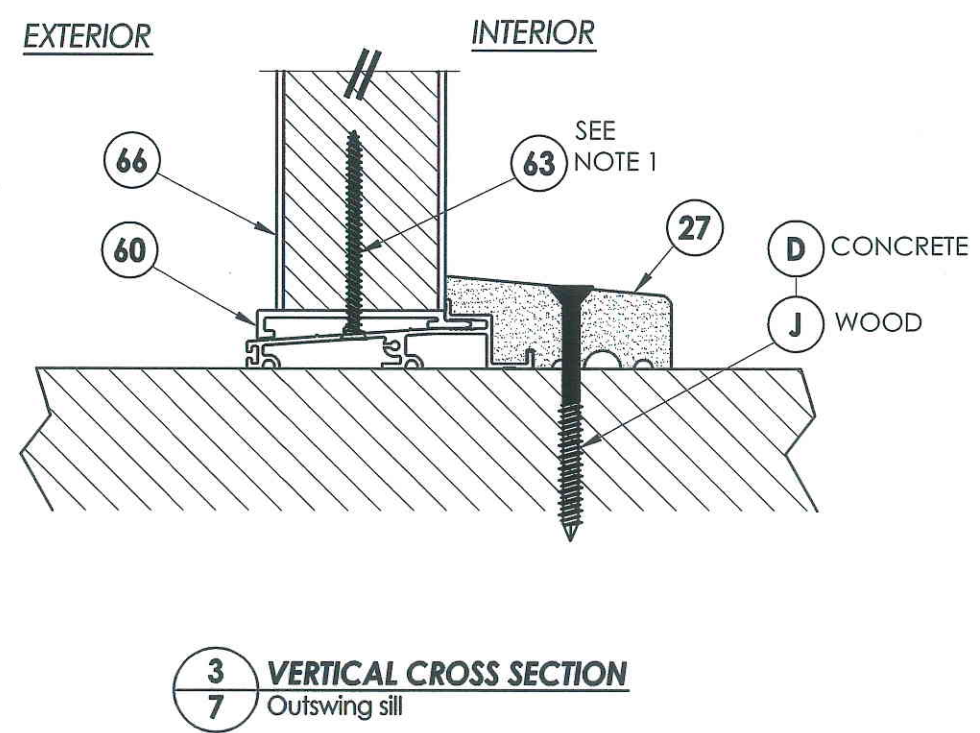
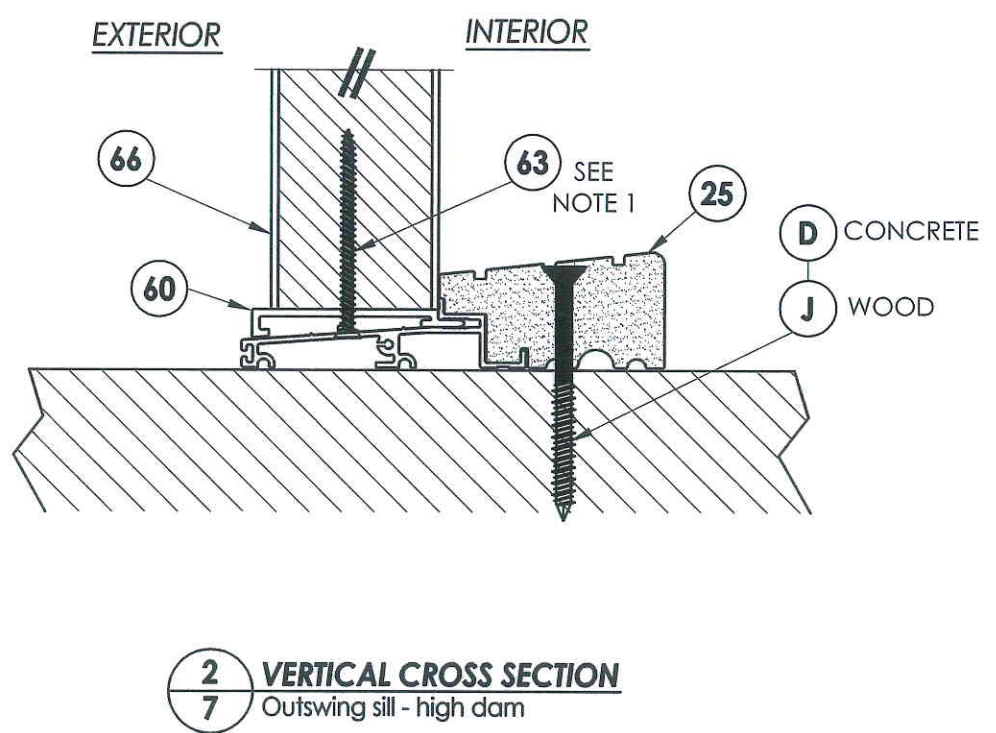


NOTE:
1. Sidelite screws (item #63) located at 3" from each end and on center line.

Documents Prepared By: Lyndon F. Schmidt, P.E.
TEXAS P.E. #104123

RW BUILDING CONSULTANTS, INC.
P.O. Box 230 Vairico FL 33595
Phone No.: 813.659.9197

TEXAS BOARD OF PROFESSIONAL ENGINEERS
CERTIFICATE OF REGISTRATION # F-11852



PRODUCT: RightConcept
6'8 PREMIUM OPAQUE

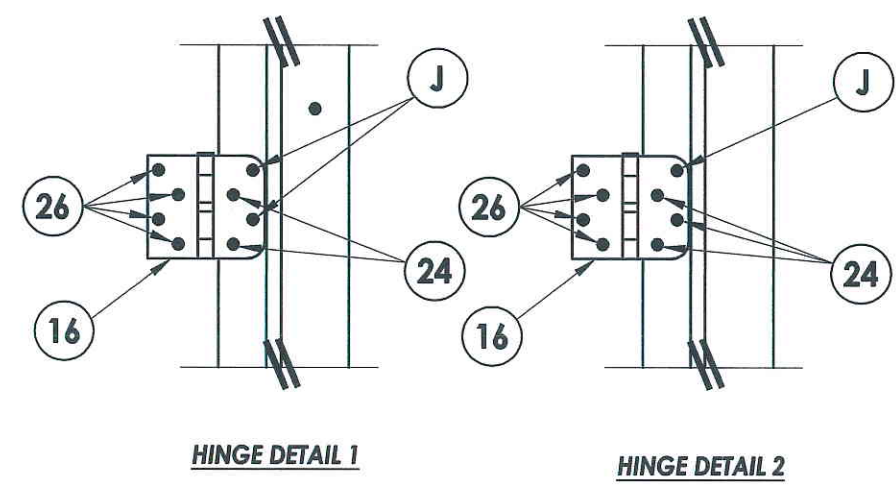
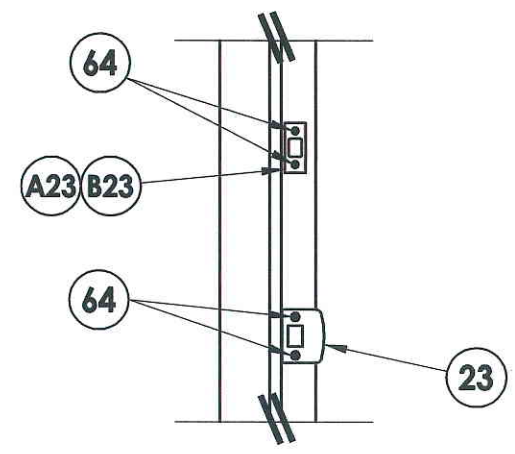
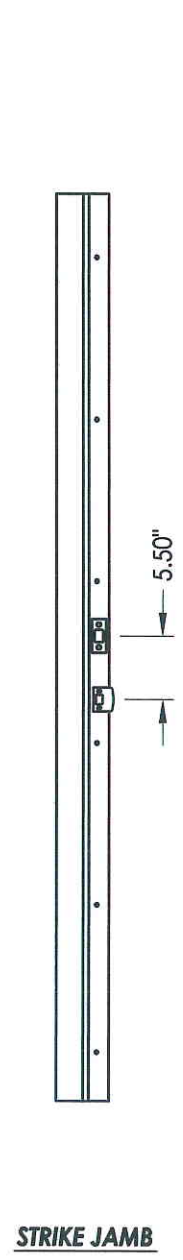
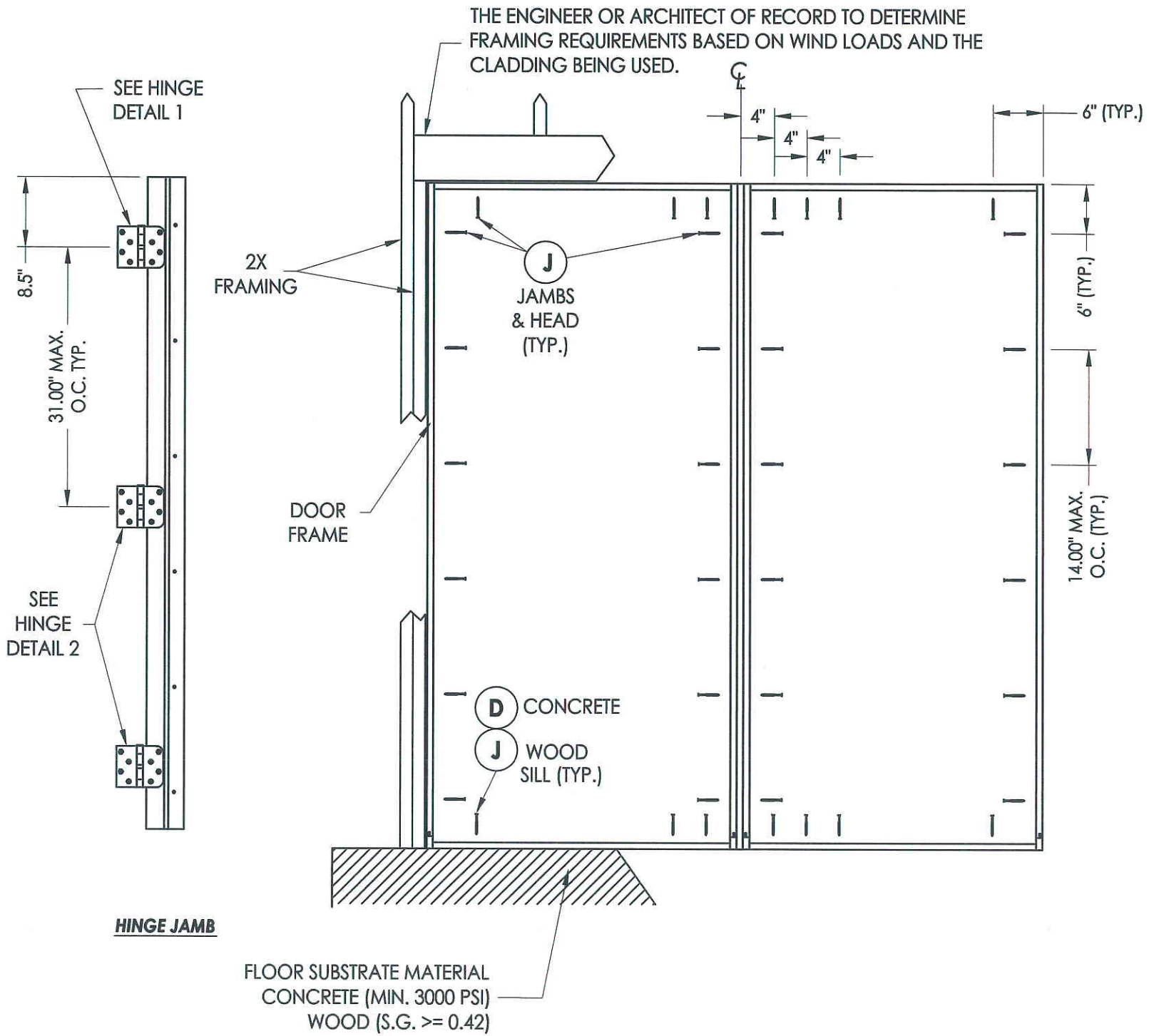
PART OR ASSEMBLY:

VERTICAL CROSS SECTIONS

NO.	DATE	BY	REVISIONS

DATE: 9/21/10
SCALE: N.T.S.
DWG. BY: JK
CHK. BY: LFS
DRAWING NO.: TX-4108
SHEET 7 OF 11

R:\A - Projects\Project Folders\Proj 1001-1100\pf1098\RWBC Drawings\TX-4107.dwg, 8.2



Documents Prepared By: Lyndon F. Schmidt, P.E.
TEXAS P.E. #104123

RW BUILDING CONSULTANTS, INC.
P.O. Box 230 Vairico FL 33595
Phone No.: 813.659.9197

TEXAS BOARD OF PROFESSIONAL ENGINEERS
CERTIFICATE OF REGISTRATION # F-11852

PRODUCT: RightConcept
6'8 PREMIUM OPAQUE

PART OR ASSEMBLY:
FRAME ANCHORING (XO)

NO.	DATE	BY	REVISIONS

DATE: 9/21/10

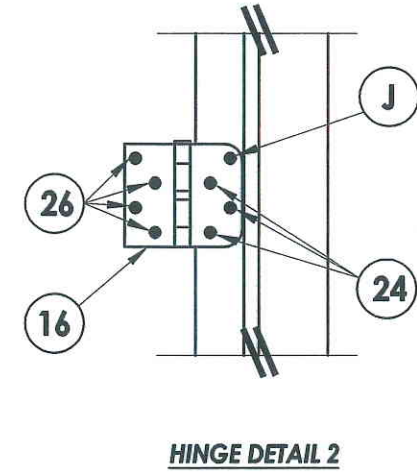
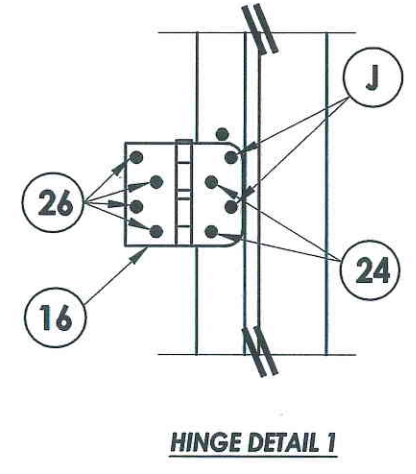
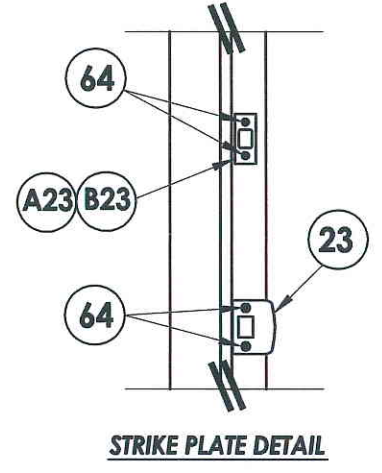
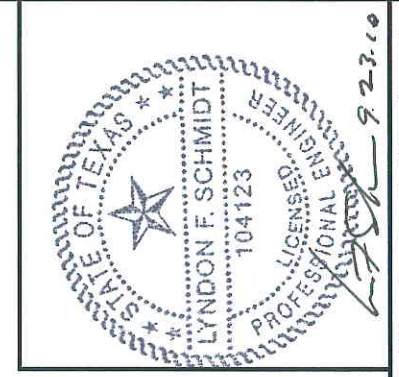
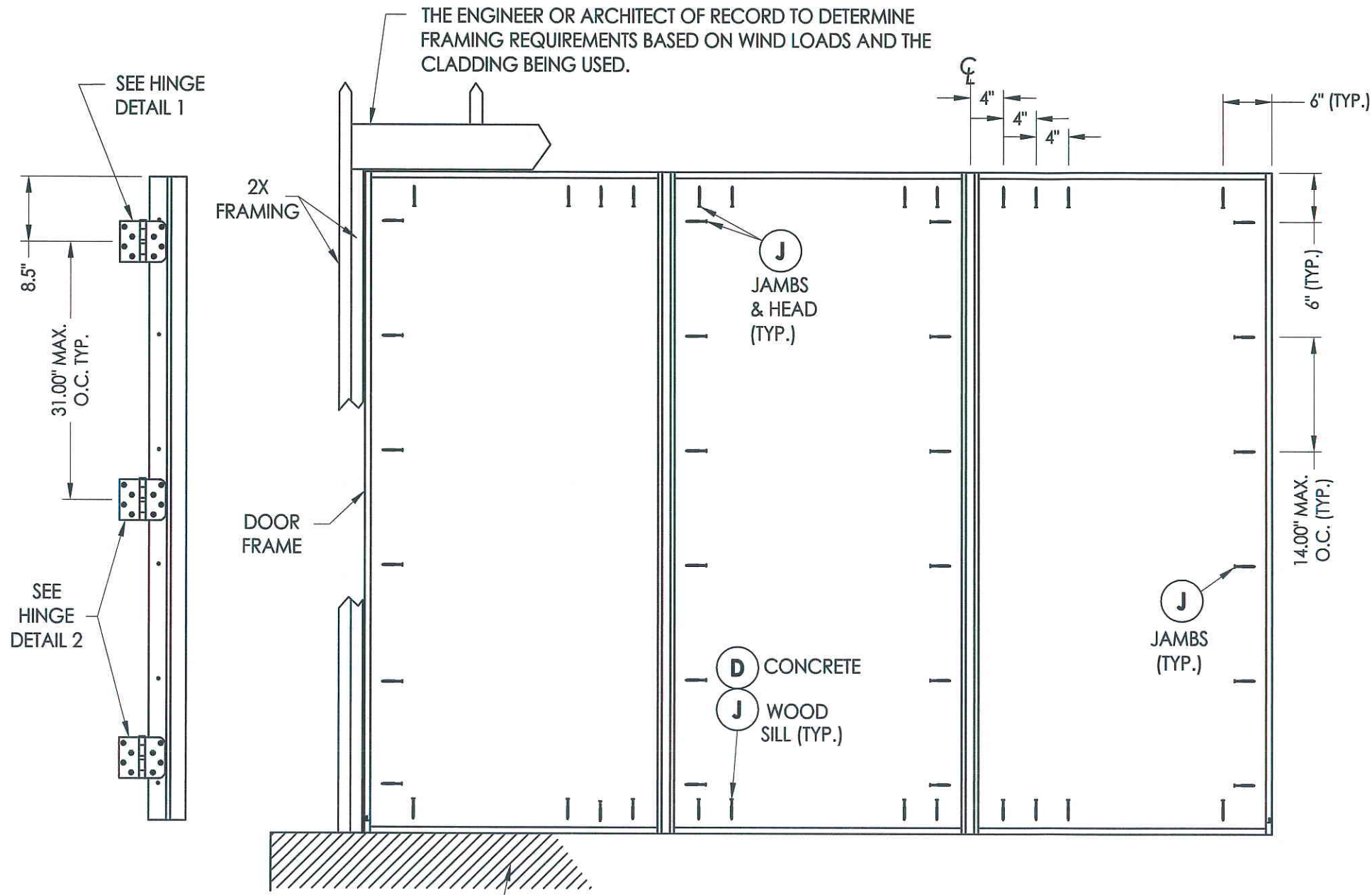
SCALE: N.T.S.

DWG. BY: JK

CHK. BY: LFS

DRAWING NO.: TX-4108

SHEET 8 OF 11



Documents Prepared By: Lyndon F. Schmidt, P.E.
TEXAS P.E. #104123

RW BUILDING CONSULTANTS, INC.
P.O. Box 230 Valrico FL 33595
Phone No.: 813.659.9197

TEXAS BOARD OF PROFESSIONAL ENGINEERS
CERTIFICATE OF REGISTRATION # F-11852

PRODUCT: RightConcept
6'8 PREMIUM OPAQUE

PART OR ASSEMBLY:
FRAME ANCHORING (OXO)

NO.	DATE	BY	REVISIONS

DATE: 9/21/10
SCALE: N.T.S.
DWG. BY: JK
CHK. BY: LFS
DRAWING NO.: TX-4108
SHEET 9 OF 11

