

# RightConcept™

2615 S. 80th STREET TACOMA, WA 98409

## PREMIUM OPAQUE FIBERGLASS DOOR w/ or w/o SIDELITES OUTSWING "IMPACT"

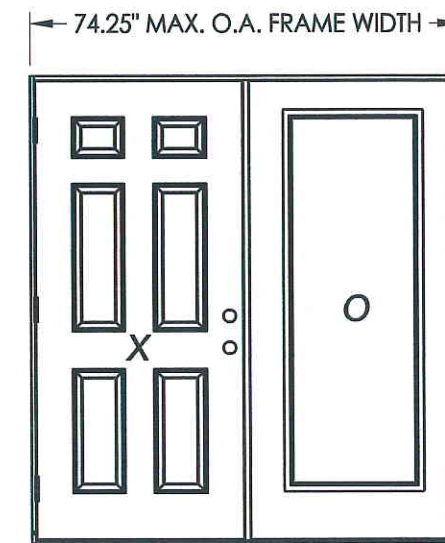
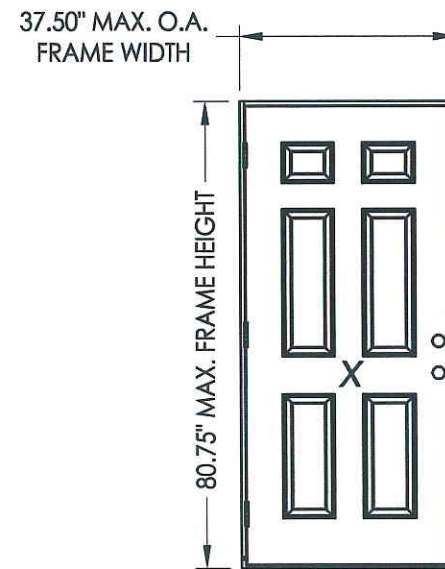
EVALUATED FOR USE IN THE STATE OF TEXAS

The Right Concept Fiberglass Door described herein complies with the 2006 International Residential Code (IRC), Sections R301 & R613 and the 2006 International Building Code (IBC), Sections 1405.12, 1609, 1714.5, 2403 and 2404 (including Texas revisions) subject to the following conditions:

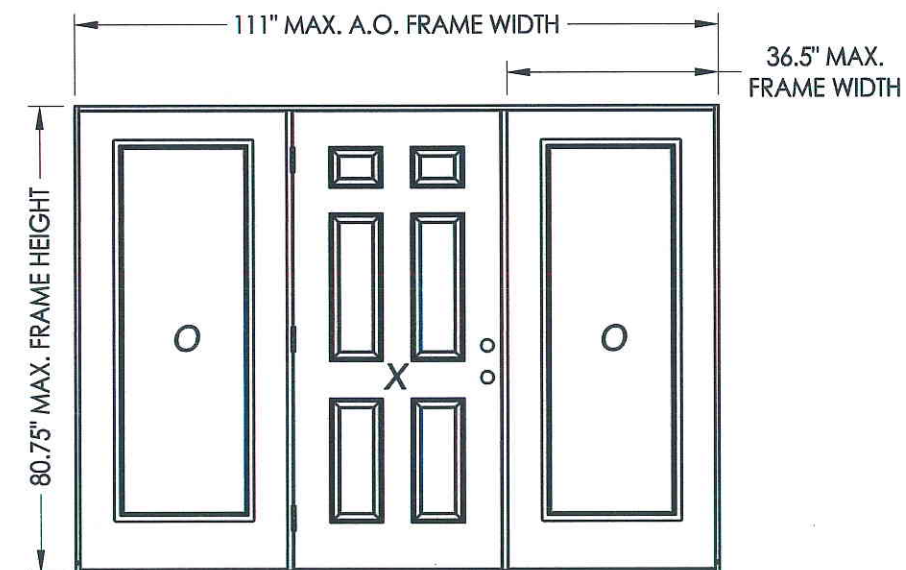
1. Anchors shall be as listed and spaced as shown in the details. Anchor embedment to base material shall be beyond wall dressing or stucco.
2. This system has been tested and evaluated as a large missile impact protective system for installation in the Seaward, Inland I and Inland II areas. This product meets missile level "D" and includes Wind Zone 4 as defined in ASTM E1996.
3. Allowable design pressure requirements must be equal to or less than the design pressure rating shown in the design pressure chart, sheet 1 of this drawing.
4. Conditions not covered by this drawing are subject to further engineering analysis.

### SUPPORTING DOCUMENTS & EVIDENCE

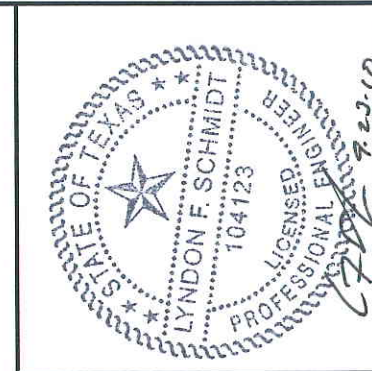
1. Testing per TAS 201, 202 & 203-94; AAMA/WDMA/CSA 101/I.S.2/A440-05, ASTM E 1886/1996:  
Testing Evaluation Laboratories, Inc. test report(s) #: TEL 06-0918-2, TEL 01370051 & TEL 08-1370021, 21-IC.
2. Calculations (Anchoring and Glass load resistance report ASTM E1300-04) prepared by Lyndon F. Schmidt, P.E.
3. Certificate of Participation issued by the National Accreditation and Management Institute, Inc., certifying that RightConcept is manufacturing products within a Quality Assurance program.



CONTINUOUS HEADER AND SILL



CONTINUOUS HEADER AND SILL



Documents Prepared By: Lyndon F. Schmidt, P.E.  
TEXAS P.E. #104123

**RW** BUILDING CONSULTANTS, INC.  
P.O. Box 230 Valrico FL, 33596  
Phone No.: 813.659.9197

TEXAS BOARD OF PROFESSIONAL ENGINEERS  
CERTIFICATE OF REGISTRATION # F-11852

PRODUCT: RightConcept  
6'8 PREMIUM OPAQUE  
PART OR ASSEMBLY:  
TYPICAL ELEVATION, DESIGN  
PRESSURES & GENERAL NOTES

NO.	DATE	BY	REVISIONS

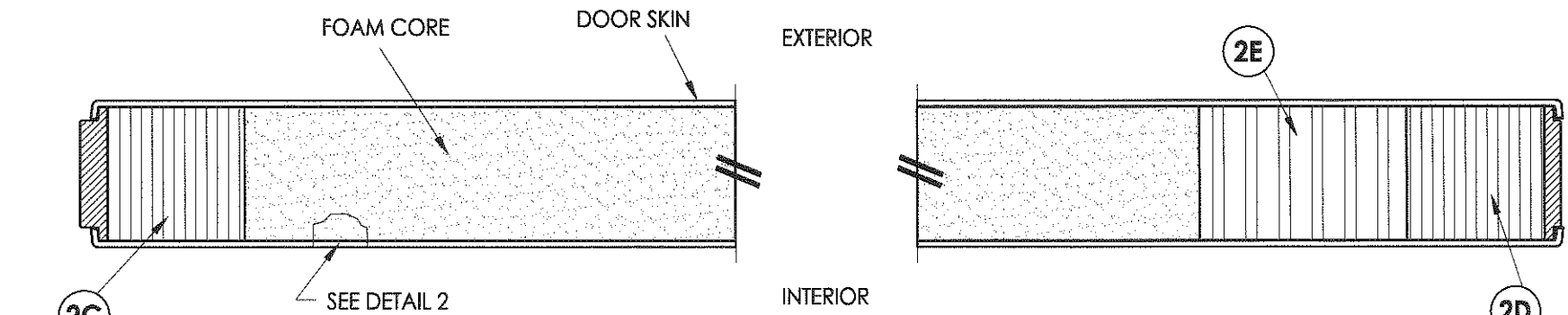
DATE: 9/21/10  
SCALE: N.T.S.  
DWG. BY: JK  
CHK. BY: LFS  
DRAWING NO.: TX-4107  
SHEET 1 OF 12

TABLE OF CONTENTS	
SHEET#	DESCRIPTION
1	Typical elevations, design pressures & general notes
2	Door panel construction details
3	Sidelite panel construction details and glazing details
4	Elevations
5	Horizontal cross sections
6	Vertical cross sections
7	Vertical cross sections
8	Frame anchoring (X)
9	Frame anchoring (XO/OX)
10	Frame anchoring (OX)
11	Components
12	Bill of materials

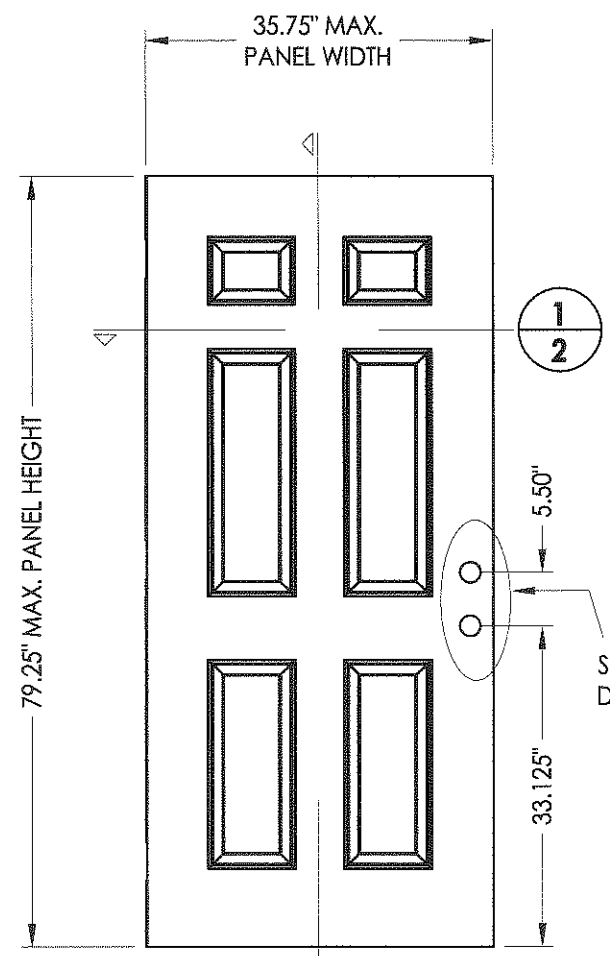
CONFIGURATION	MAX. O.A. FRAME DIMENSION	MAX. SIDELITE D.L.O. DIMENSION	GLASS TYPE	DESIGN PRESSURE (PSF)	
				POSITIVE	NEGATIVE
X	37.50" x 80.75"	N/A	N/A	+65.0	-65.0
XO/OX	74.25" x 80.75"	21.0" x 63.0"	G1, G2 & G3	+60.0	-60.0
OXO	111.0" x 80.75"	21.0" x 63.0"	G1, G2 & G3	+60.0	-60.0



R:\A - Projects\Project Folders\Proj 1001-1100\pf1098\RWBC Drawings\TX-4107.dwg, 2.1

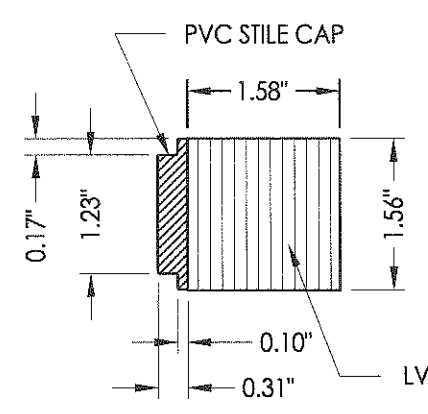


**1**  
**2** HORIZONTAL CROSS SECTION

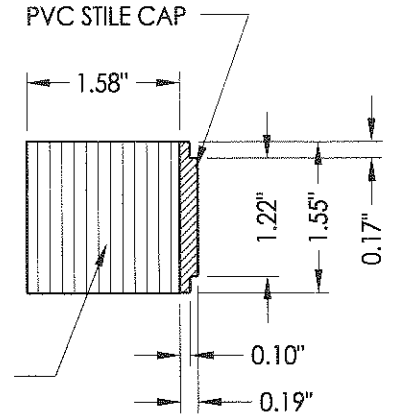


**7** DOOR PANEL  
Fiberglass

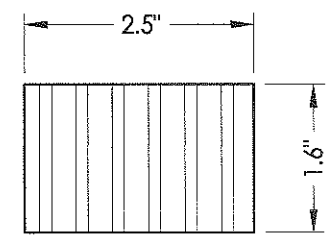
FIBERGLASS DOOR SKIN: MIN. 0.079\"/>



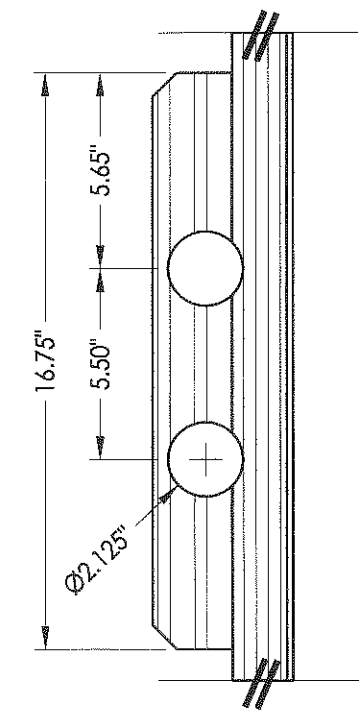
**2C** HINGE STILE  
PVC/LVL



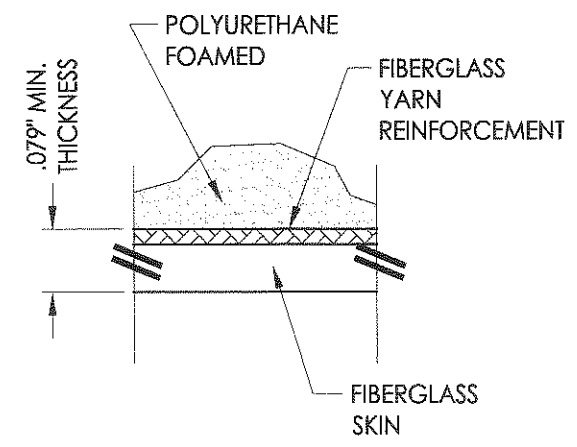
**2D** LATCH STILE  
PVC/LVL



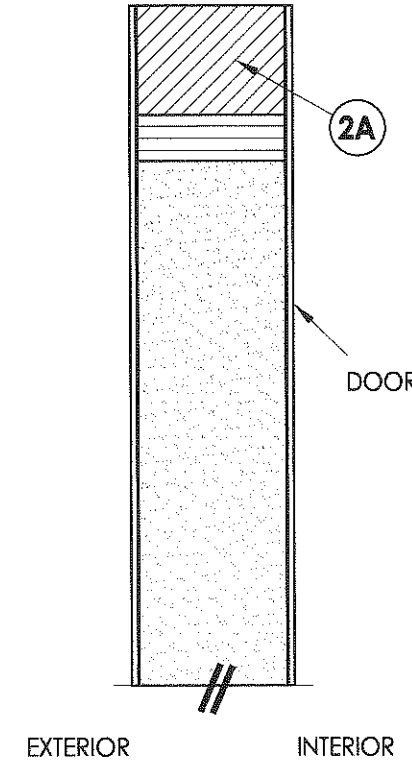
**2E** LOCK BLOCK  
LVL



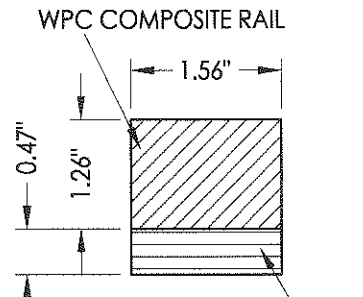
DETAIL 1



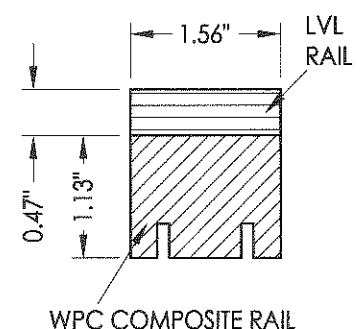
DETAIL 2



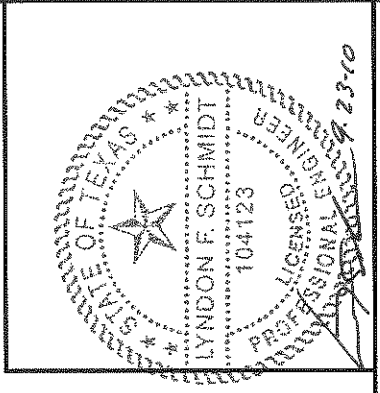
**2**  
**2** VERTICAL CROSS SECTION



**2A** TOP RAIL  
LVL/WPC



**2B** BOTTOM RAIL  
LVL/WPC



Documents Prepared By: Lyndon F. Schmidt, P.E.  
TEXAS P.E. #104123

**RW** BUILDING CONSULTANTS, INC.  
P.O. Box 230 Valrico FL 33595  
Phone No.: 813.659.9197

TEXAS BOARD OF PROFESSIONAL ENGINEERS  
CERTIFICATE OF REGISTRATION # F-11852

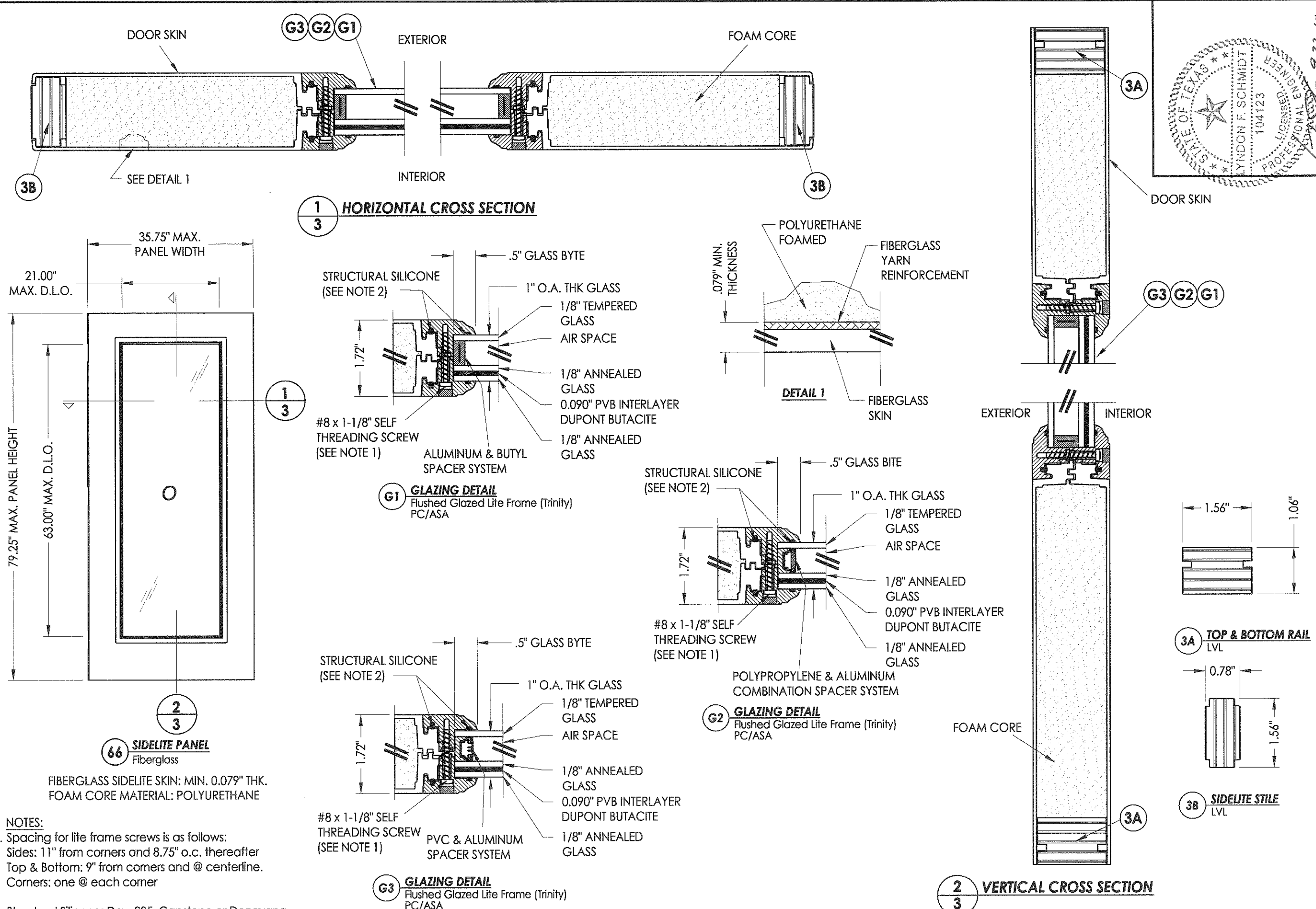
PRODUCT:	RightConcept 6'8 PREMIUM OPAQUE
PART OR ASSEMBLY:	DOOR PANEL CONSTRUCTION DETAILS

NO.	DATE	BY

DATE:	9/21/10
SCALE:	N.T.S.
DWG. BY:	JK
CHK. BY:	LFS
DRAWING NO.:	TX-4107
SHEET	2 of 12

© 2010 R.W. BUILDING CONSULTANTS INC.

R:\A - Projects\Project Folders\Proj 1001-1100\p11098\RWBC Drawings\TX-4107.dwg, 3.1



**1**  
**3** HORIZONTAL CROSS SECTION

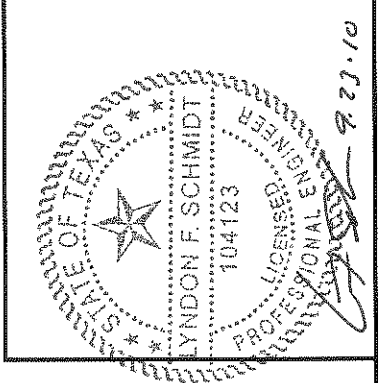
**2**  
**3** VERTICAL CROSS SECTION

**66** SIDELITE PANEL  
Fiberglass

FIBERGLASS SIDELITE SKIN: MIN. 0.079" THK.  
FOAM CORE MATERIAL: POLYURETHANE

- NOTES:
- Spacing for lite frame screws is as follows:  
Sides: 11" from corners and 8.75" o.c. thereafter  
Top & Bottom: 9" from corners and @ centerline.  
Corners: one @ each corner

2. Structural Silicone: Dow 995, Capstone or Dongyang



Documents Prepared By: Lyndon F. Schmidt, P.E.  
TEXAS P.E. #104123

**RW** BUILDING CONSULTANTS, INC.  
P.O. Box 230 Vairico FL 33595  
Phone No.: 813.659.9197

TEXAS BOARD OF PROFESSIONAL ENGINEERS  
CERTIFICATE OF REGISTRATION # F-11852

PRODUCT: RightConcept  
6'8 PREMIUM OPAQUE

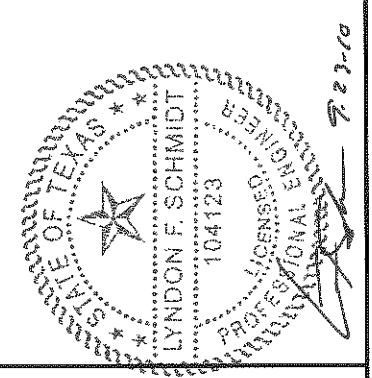
PART OR ASSEMBLY:  
SIDELITE PANEL CONSTRUCTION  
DETAILS AND GLAZING DETAILS

NO.	DATE	BY	REVISIONS

DATE: 9/21/10  
SCALE: N.T.S.  
DWG. BY: JK  
CHK. BY: LFS  
DRAWING NO.: TX-4107  
SHEET 3 of 12

© 2010 R.W. BUILDING CONSULTANTS INC.

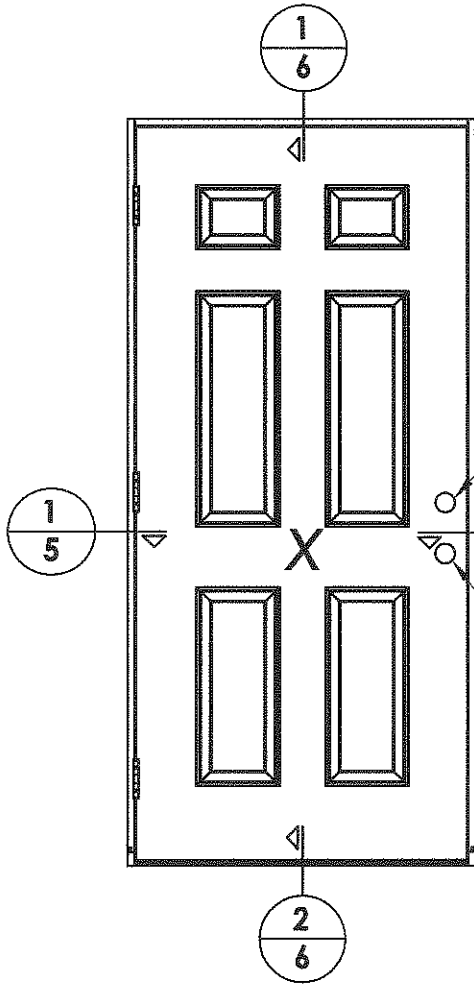
HARDWARE CHART		
MANUFACTURER	MODEL	ITEM #
KWIKSET	LOCK: 660 Combo	17
	DEADBOLT: 660 Combo	18
KWIKSET	LOCK: 740	17
	DEADBOLT: 780	18



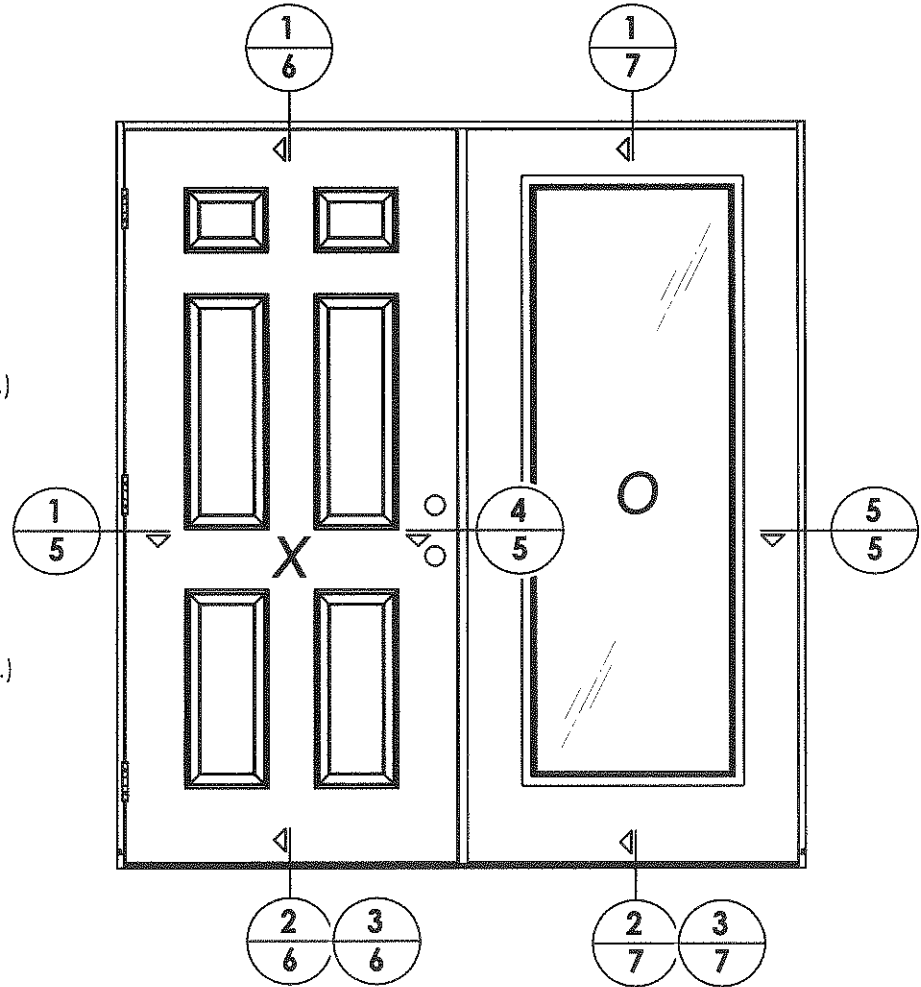
Documents Prepared By: Lyndon F. Schmidt, P.E.  
 TEXAS P.E. #104123

*RW* BUILDING CONSULTANTS, INC.  
 P.O. Box 230 Valrico FL 33595  
 Phone No.: 813.659.9197

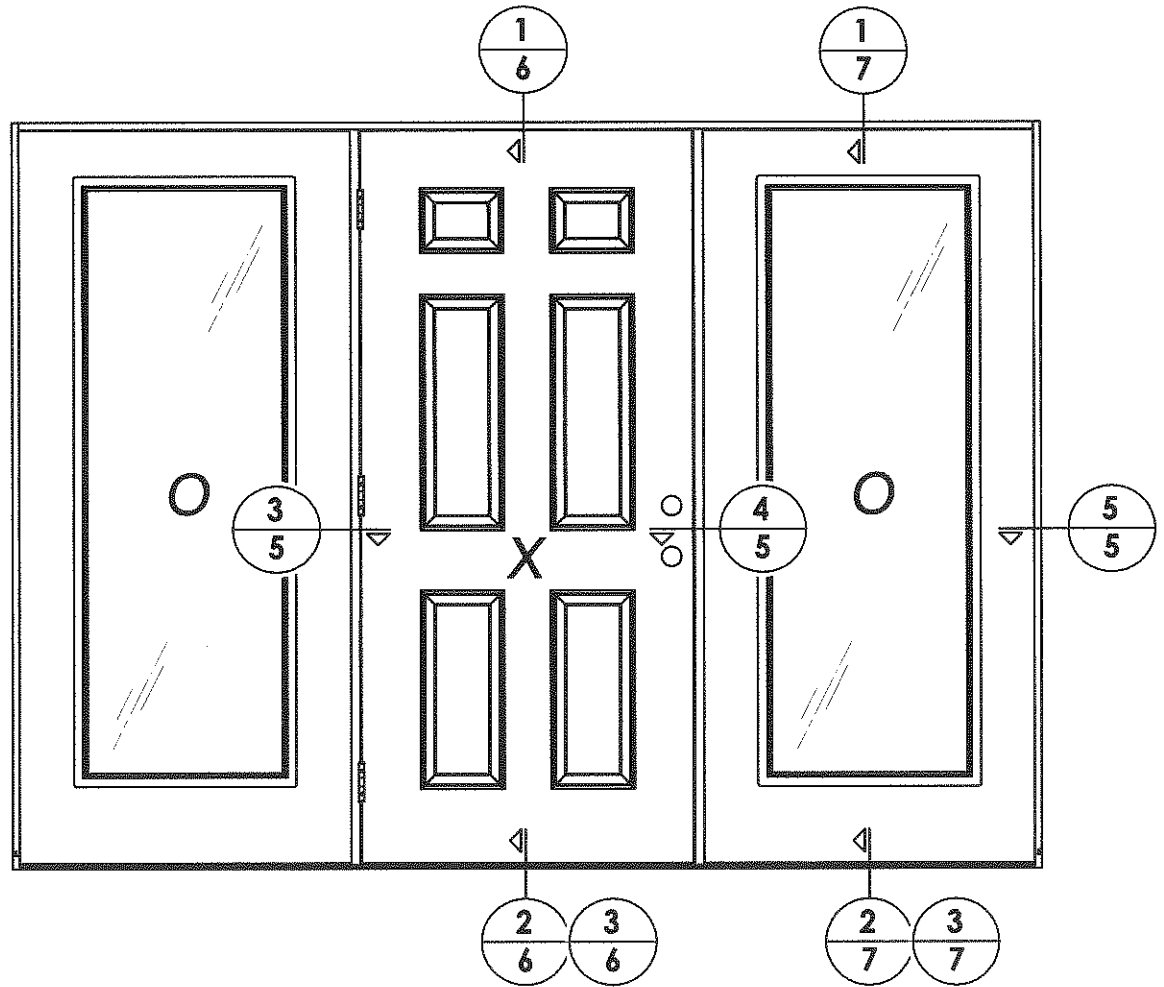
TEXAS BOARD OF PROFESSIONAL ENGINEERS  
 CERTIFICATE OF REGISTRATION # F-11852



ELEVATION (X)



ELEVATION (XO / OX)



ELEVATION (OXO)

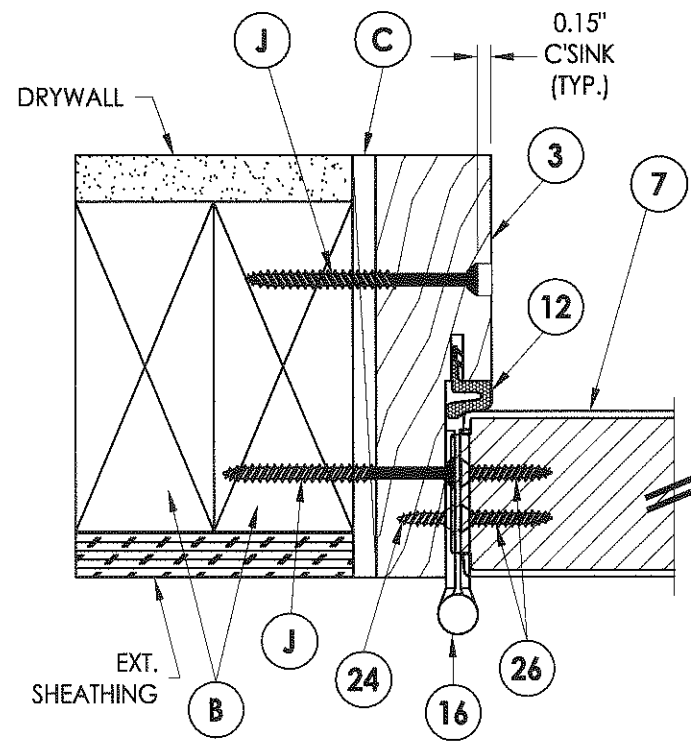
PRODUCT: RightConcept  
 6'8 PREMIUM OPAQUE

PART OR ASSEMBLY:  
 ELEVATIONS

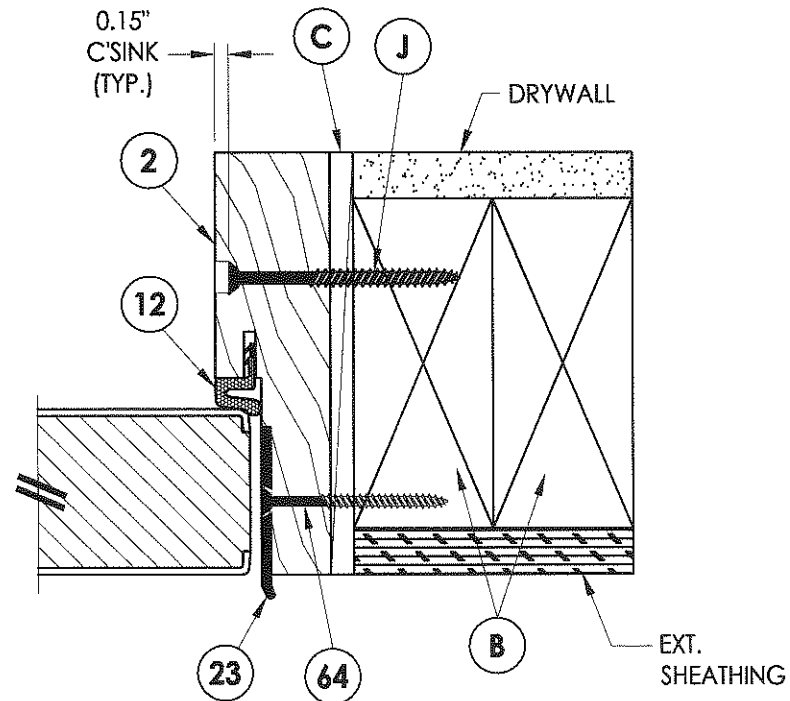
NO.	DATE	BY

DATE: 9/21/10  
 SCALE: N.T.S.  
 DWG. BY: JK  
 CHK. BY: LFS  
 DRAWING NO.: TX-4107  
 SHEET 4 of 12

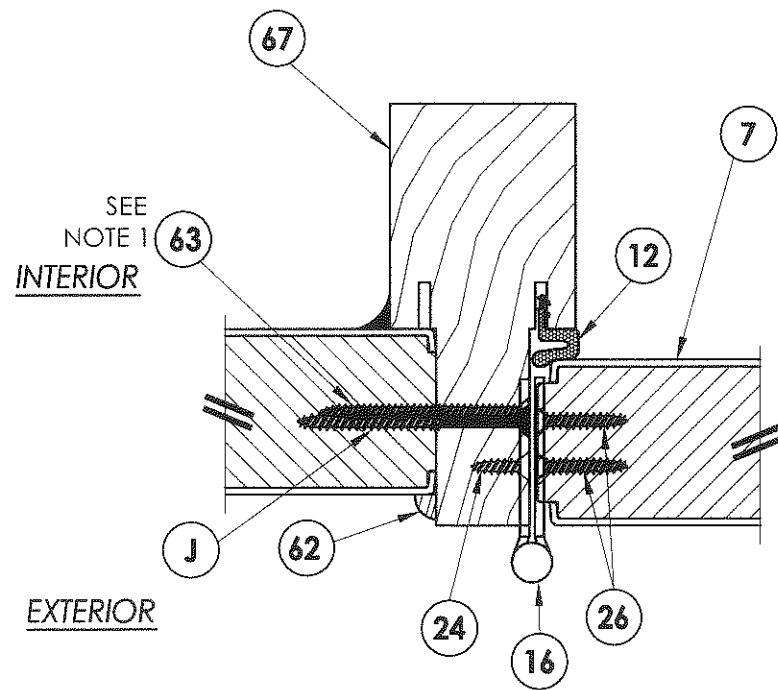
R:\A - Projects\Project Folders\Proj 1001-1100\p11098\RWBC Drawings\TX-4107.dwg, 5.1



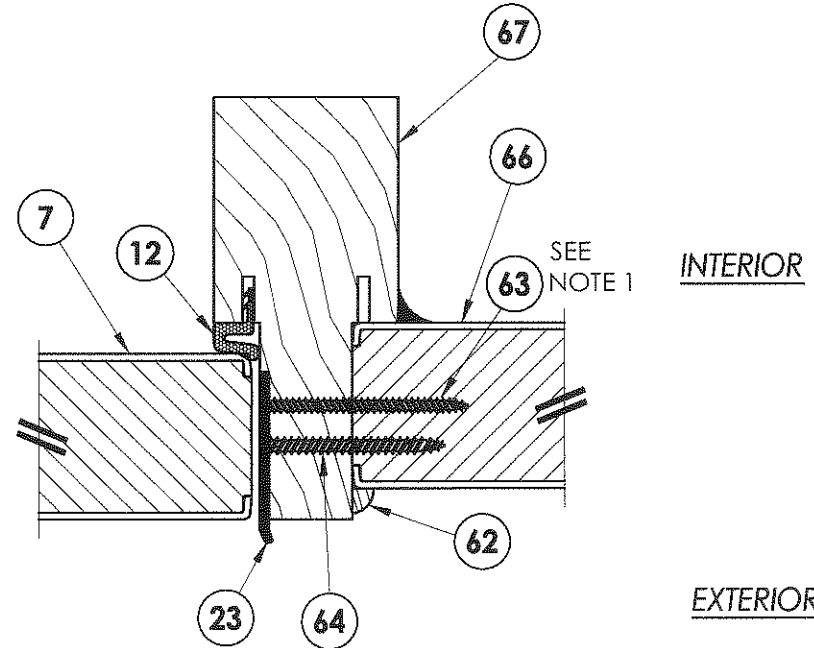
**1**  
**5** HORIZONTAL CROSS SECTION



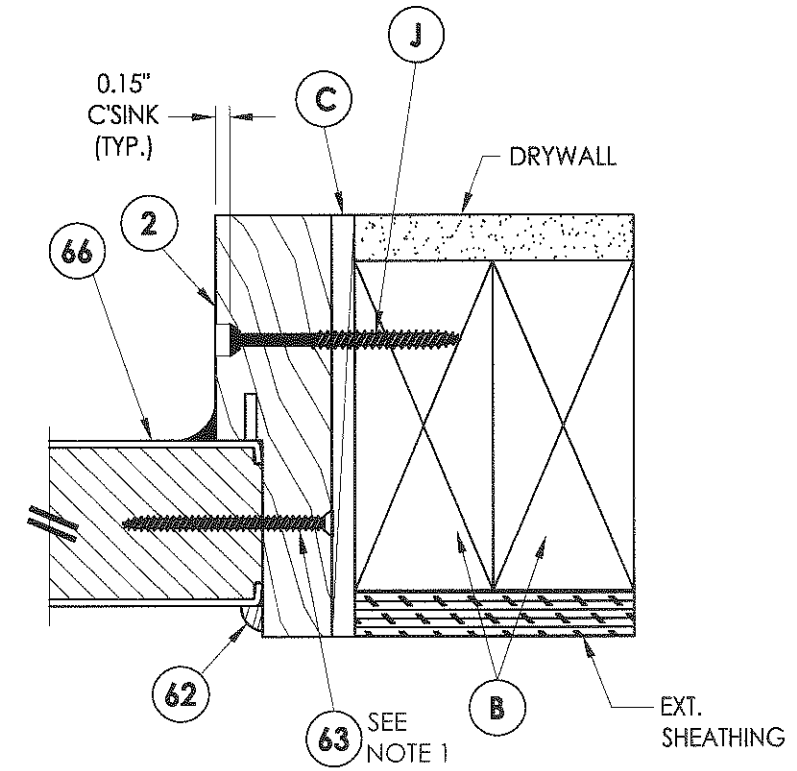
**2**  
**5** HORIZONTAL CROSS SECTION



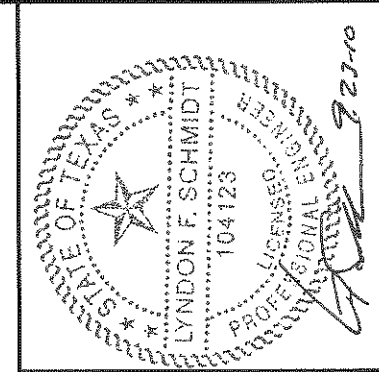
**3**  
**5** HORIZONTAL CROSS SECTION



**4**  
**5** HORIZONTAL CROSS SECTION



**5**  
**5** HORIZONTAL CROSS SECTION



NOTE:  
1. Sidelite screws (item #63) located at 6" from each end then 3 equal spaces for a total of 4 screws.

Documents Prepared By: Lyndon F. Schmidt, P.E.  
TEXAS P.E. #104123

**RW** BUILDING CONSULTANTS, INC.  
P.O. Box 230 Valrico FL 33595  
Phone No.: 813.659.9197

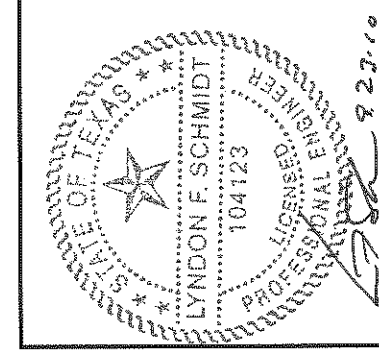
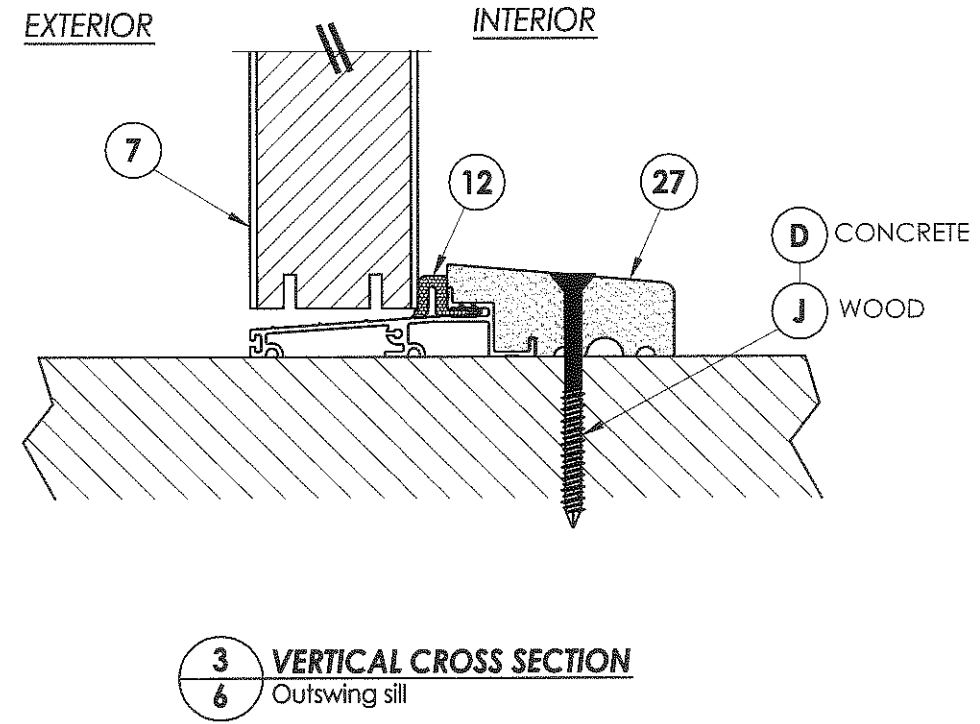
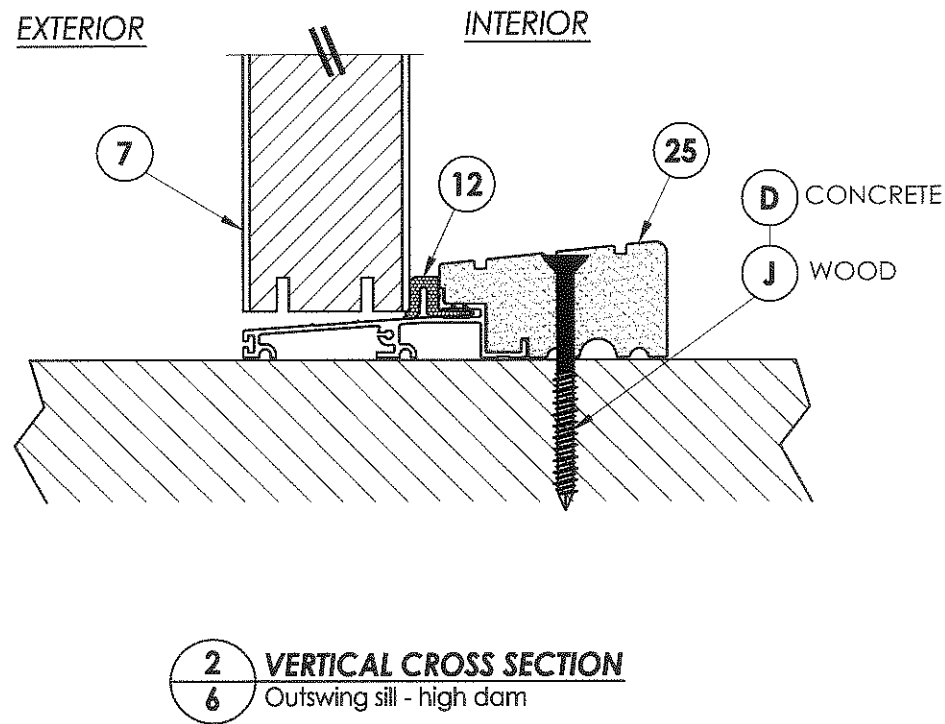
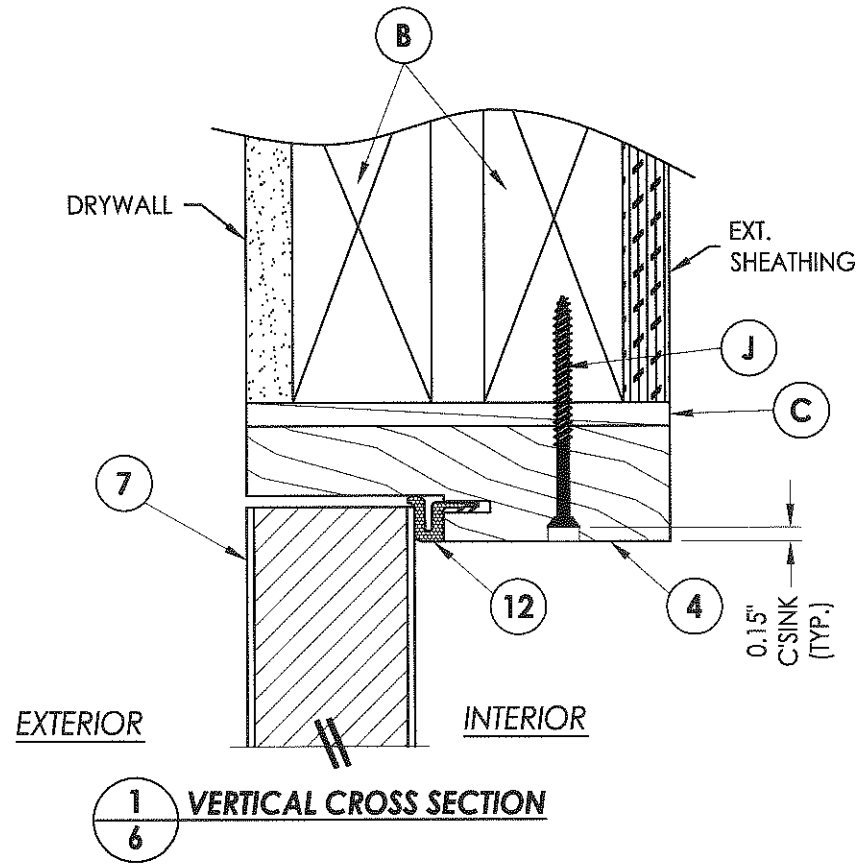
TEXAS BOARD OF PROFESSIONAL ENGINEERS  
CERTIFICATE OF REGISTRATION # F-11852

PRODUCT: RightConcept  
6'8 PREMIUM OPAQUE

PART OR ASSEMBLY:  
HORIZONTAL CROSS SECTIONS

NO.	DATE	BY	REVISIONS

DATE: 9/21/10  
SCALE: N.T.S.  
DWG. BY: JK  
CHK. BY: LFS  
DRAWING NO.: TX-4107  
SHEET 5 OF 12



Documents Prepared By: Lyndon F. Schmidt, P.E.  
TEXAS P.E. #104123

**RW** BUILDING CONSULTANTS, INC.  
P.O. Box 230 Valrico FL 33595  
Phone No.: 813.659.9197

TEXAS BOARD OF PROFESSIONAL ENGINEERS  
CERTIFICATE OF REGISTRATION # F-11852

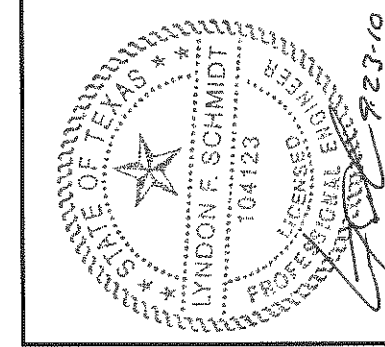
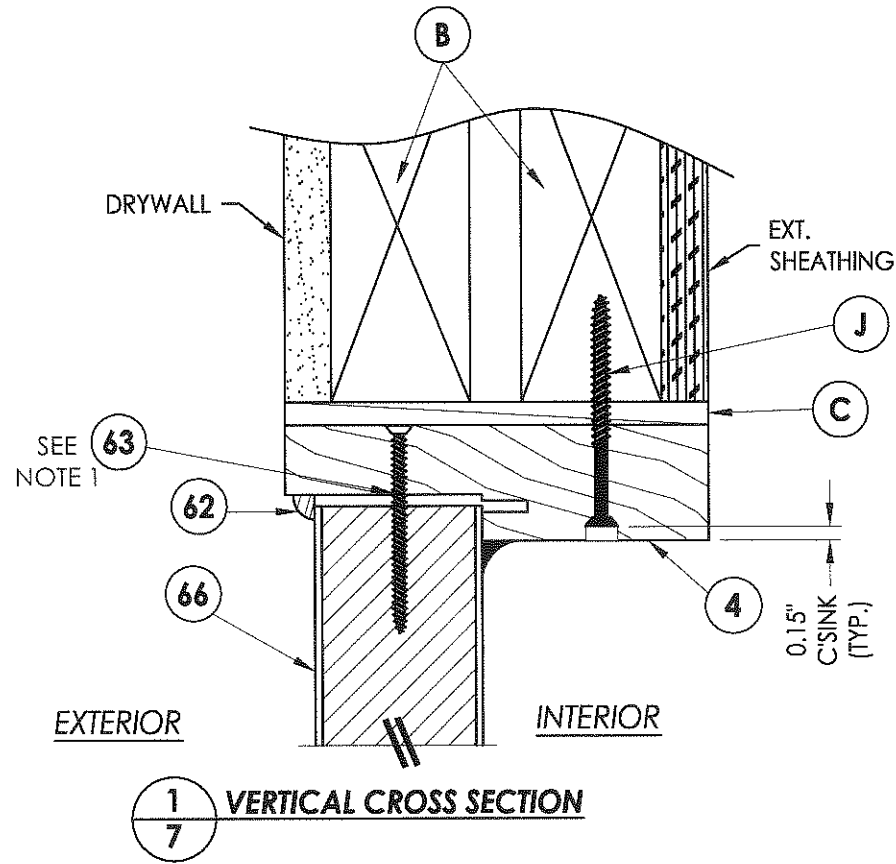
PRODUCT: RightConcept  
6'8 PREMIUM OPAQUE

PART OR ASSEMBLY:  
VERTICAL CROSS SECTIONS

NO.	DATE	BY

DATE: 9/21/10  
SCALE: N.T.S.  
DWG. BY: JK  
CHK. BY: LFS  
DRAWING NO.: TX-4107  
SHEET 6 OF 12

R:\A - Projects\Project Folders\Proj 1001-1100\pf1098\RWBC Drawings\TX-4107.dwg, 7.1



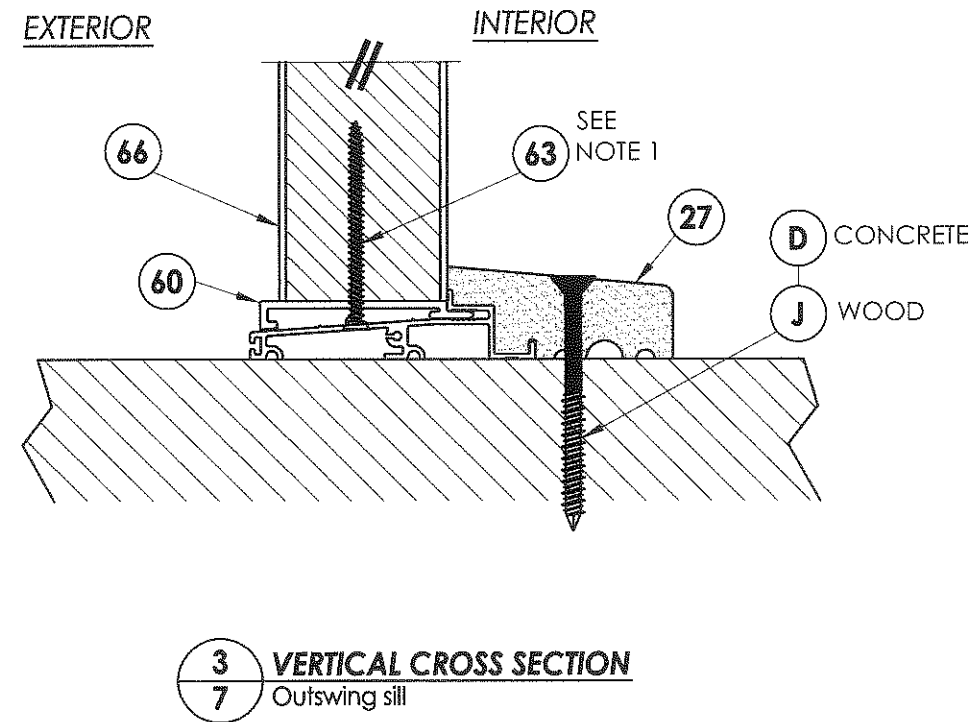
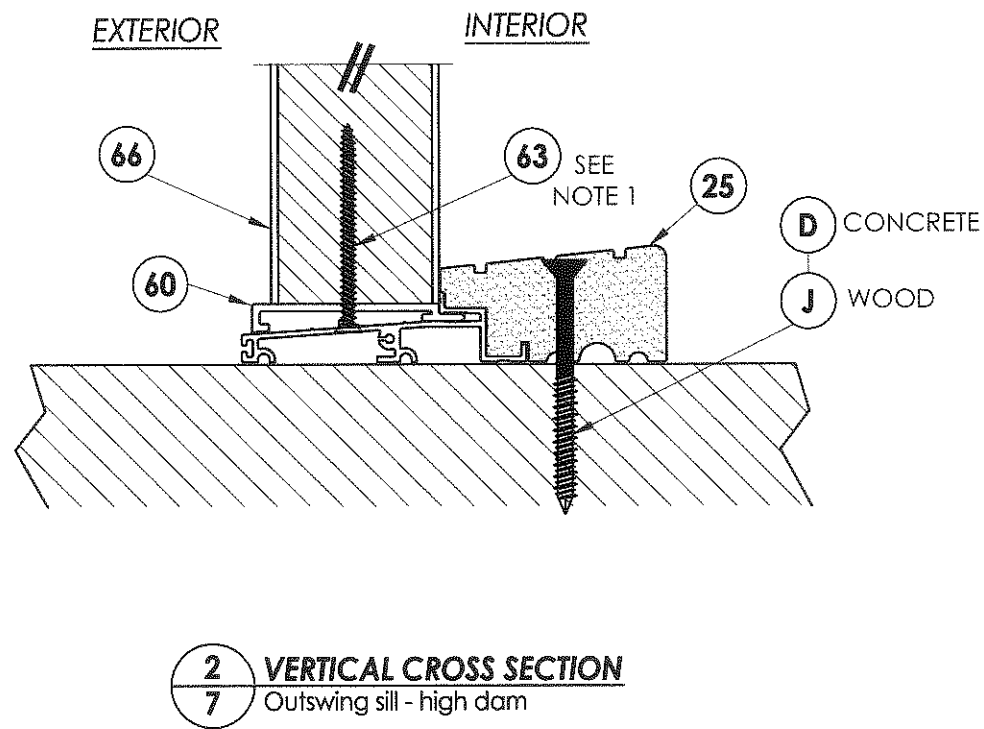
**NOTE:**

- Sidelite screws (item #63) located at 3" from each end and on center line.

Documents Prepared By: Lyndon F. Schmidt, P.E.  
TEXAS P.E. #104123

**RW** BUILDING CONSULTANTS, INC.  
P.O. Box 230 Valrico FL 33595  
Phone No.: 813.659.9197  
TEXAS BOARD OF PROFESSIONAL ENGINEERS  
CERTIFICATE OF REGISTRATION # F-11852

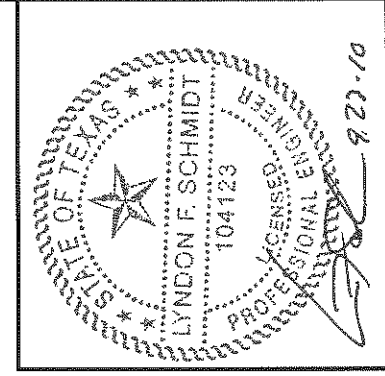
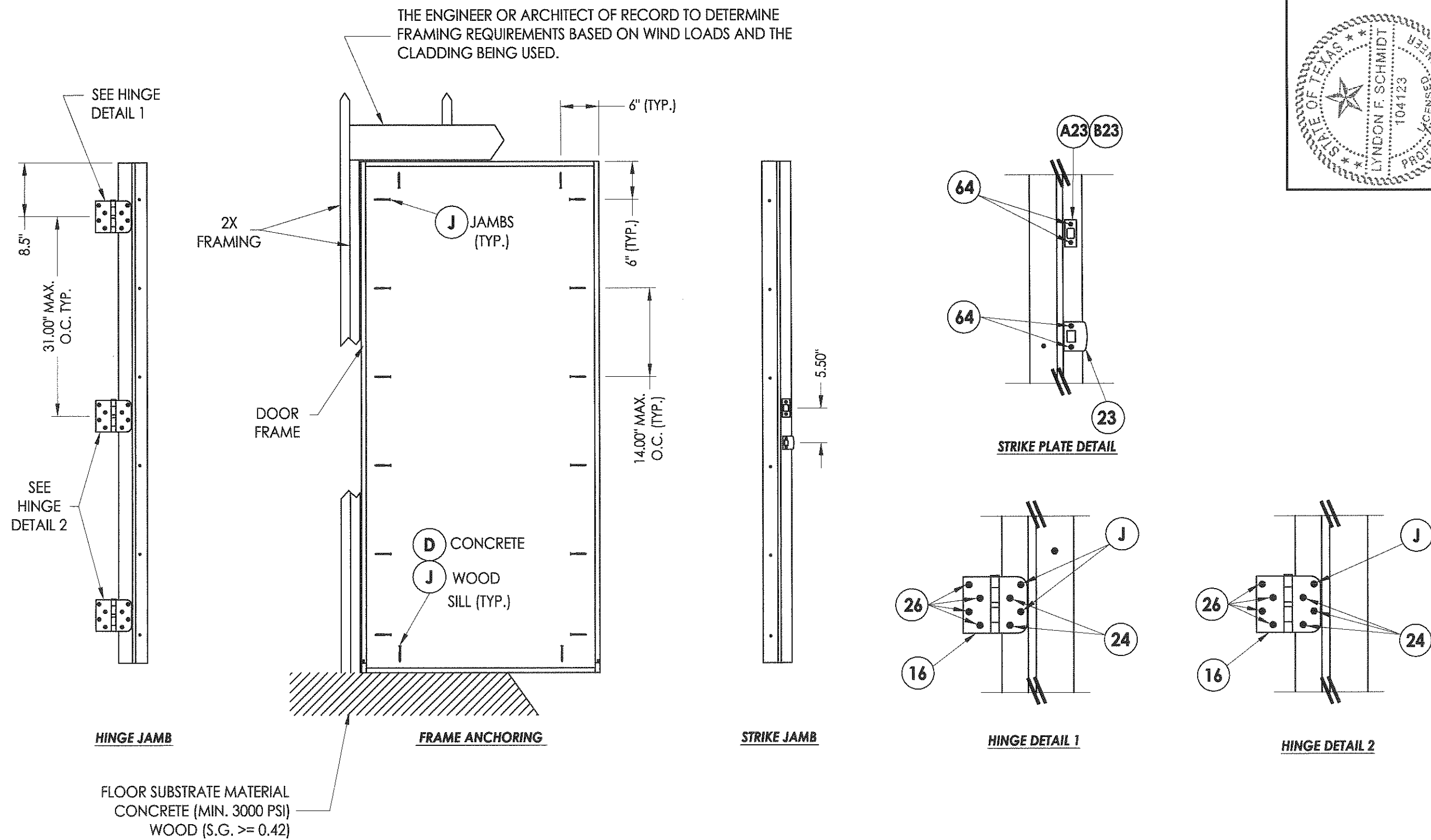
PRODUCT:	RightConcept 6'8 PREMIUM OPAQUE
PART OR ASSEMBLY:	VERTICAL CROSS SECTIONS



NO.	DATE	BY	REVISIONS

DATE:	9/21/10
SCALE:	N.T.S.
DWG. BY:	JK
CHK. BY:	LFS
DRAWING NO.:	TX-4107
SHEET	7 of 12

R:\A - Projects\Project Folders\Proj 1001-1100\pf1098\RWBC Drawings\TX-4107.dwg, 8.1



Documents Prepared By: Lyndon F. Schmidt, P.E.  
TEXAS P.E. #104123

**RW** BUILDING CONSULTANTS, INC.  
P.O. Box 230 Valrico FL 33595  
Phone No.: 813.658.9197

TEXAS BOARD OF PROFESSIONAL ENGINEERS  
CERTIFICATE OF REGISTRATION # F-11852

PRODUCT: RightConcept  
6'8 PREMIUM OPAQUE

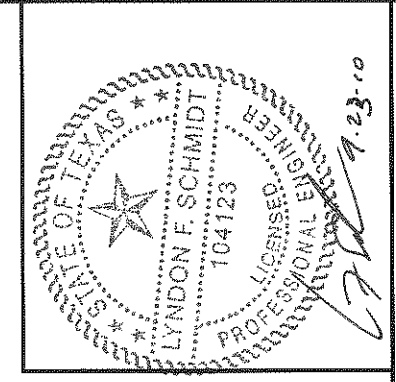
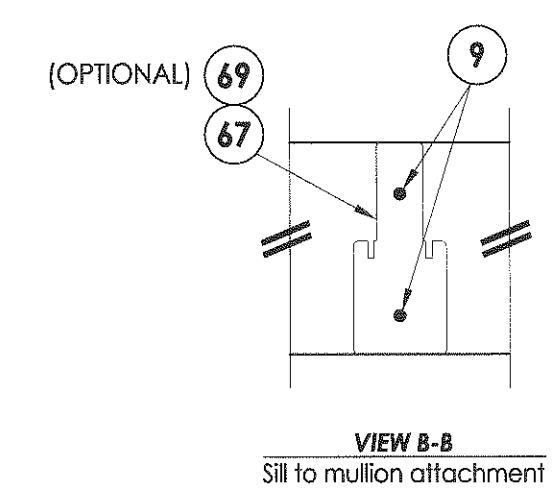
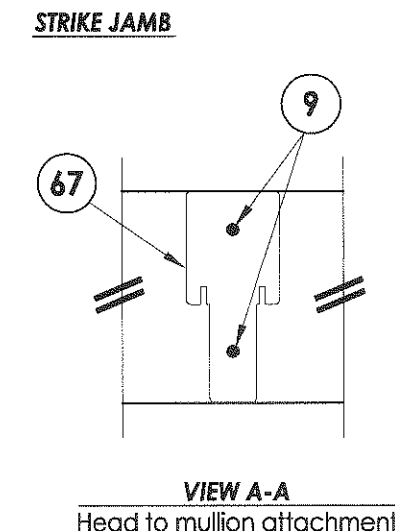
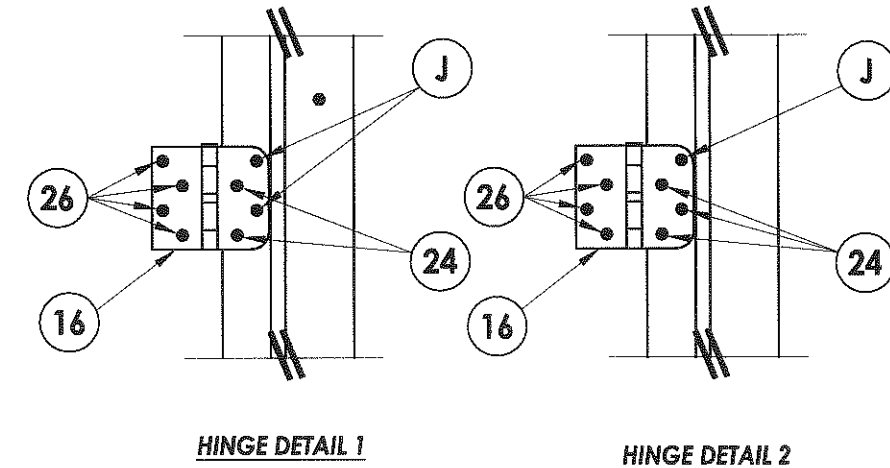
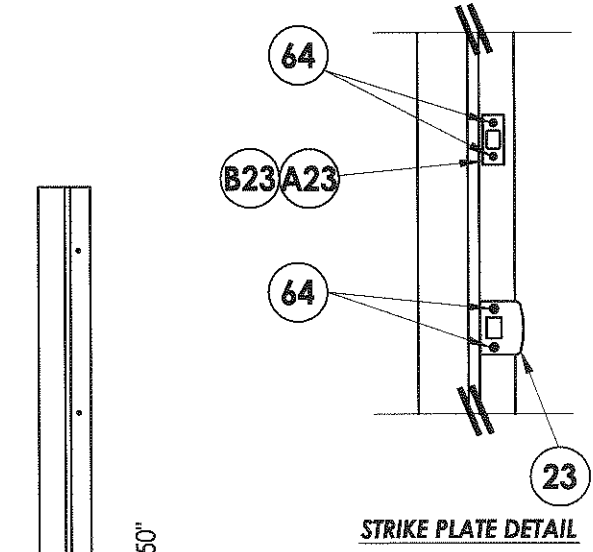
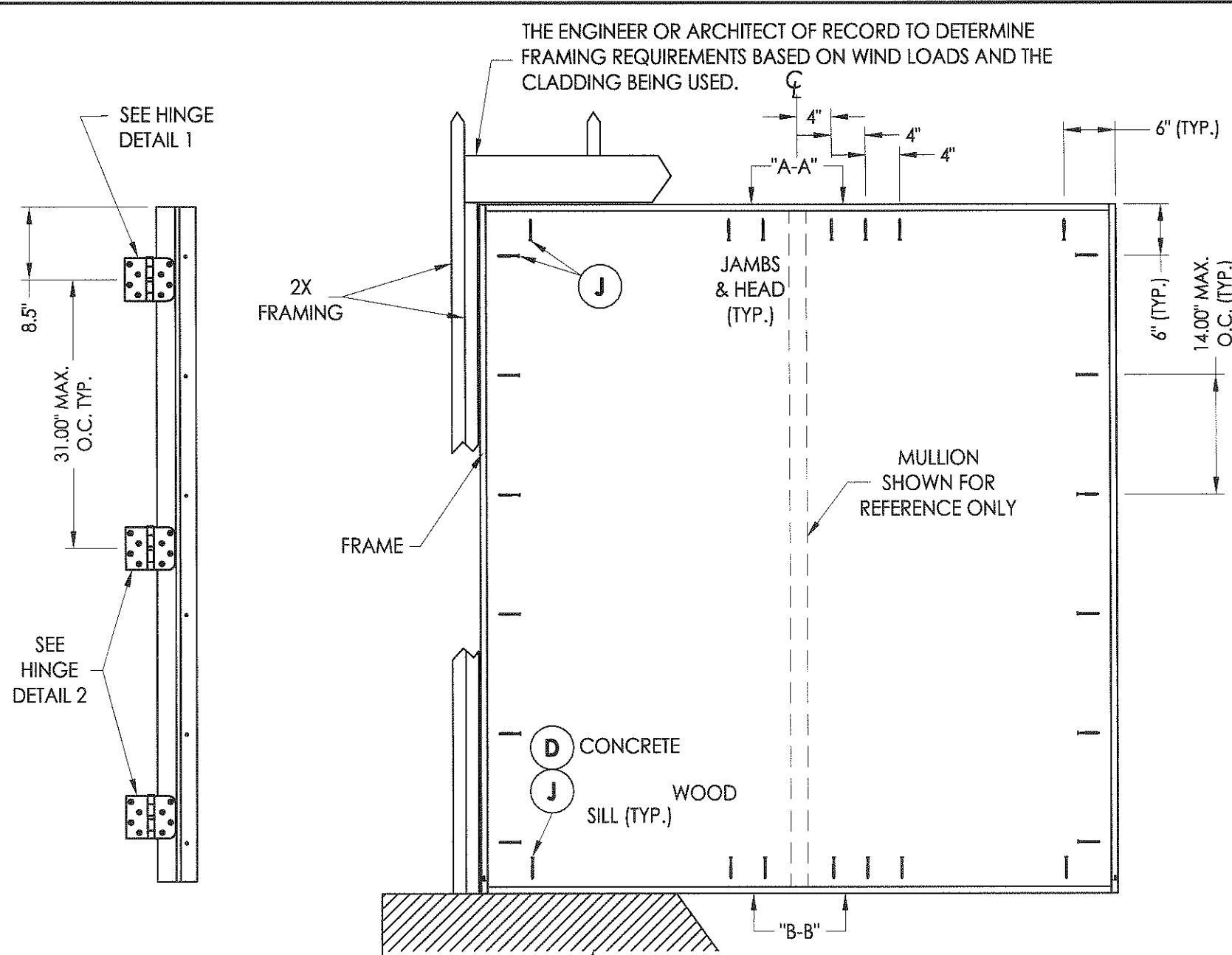
PART OR ASSEMBLY:  
FRAME ANCHORING (X)

NO.	DATE	BY	REVISIONS

DATE: 9/21/10  
SCALE: N.T.S.  
DWG. BY: JK  
CHK. BY: LFS  
DRAWING NO.: TX-4107  
SHEET 8 OF 12



R:\A - Projects\Project Folders\Proj 1001-1100\pf1098\RWBC Drawings\TX-4107.dwg, 9-1



Documents Prepared By: Lyndon F. Schmidt, P.E.  
TEXAS P.E. #104123

**RW** BUILDING CONSULTANTS, INC.  
P.O. Box 230 Valrico FL 33595  
Phone No.: 813.659.9197

TEXAS BOARD OF PROFESSIONAL ENGINEERS  
CERTIFICATE OF REGISTRATION # F-11852

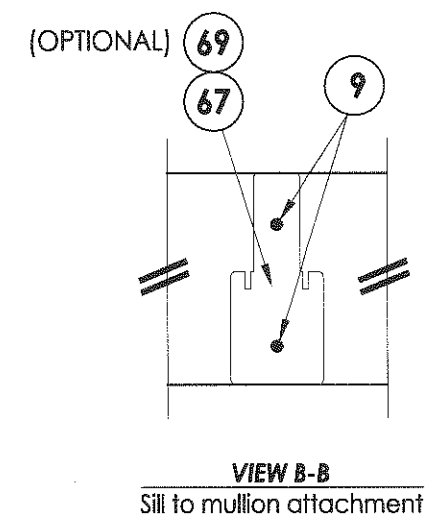
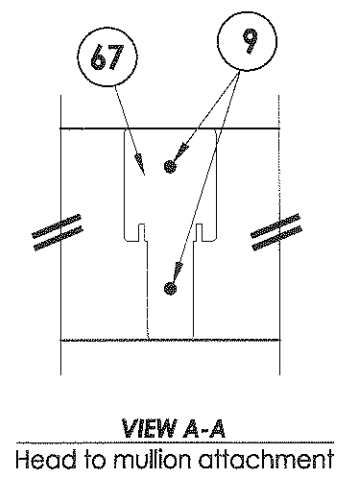
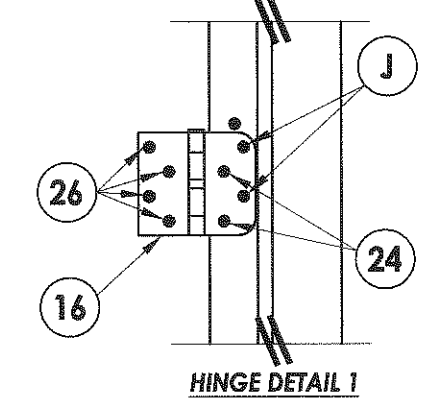
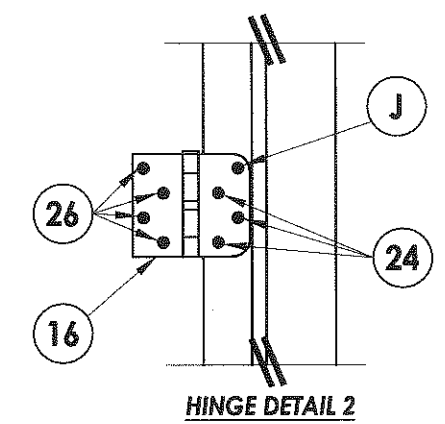
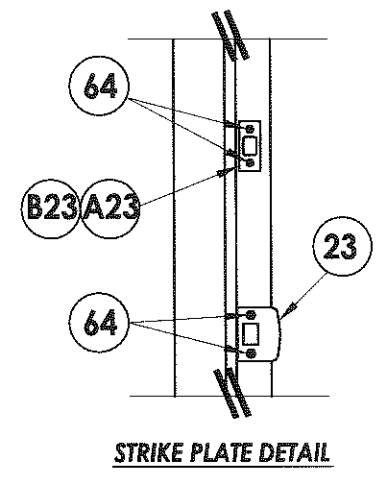
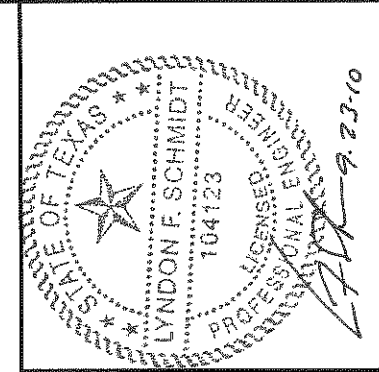
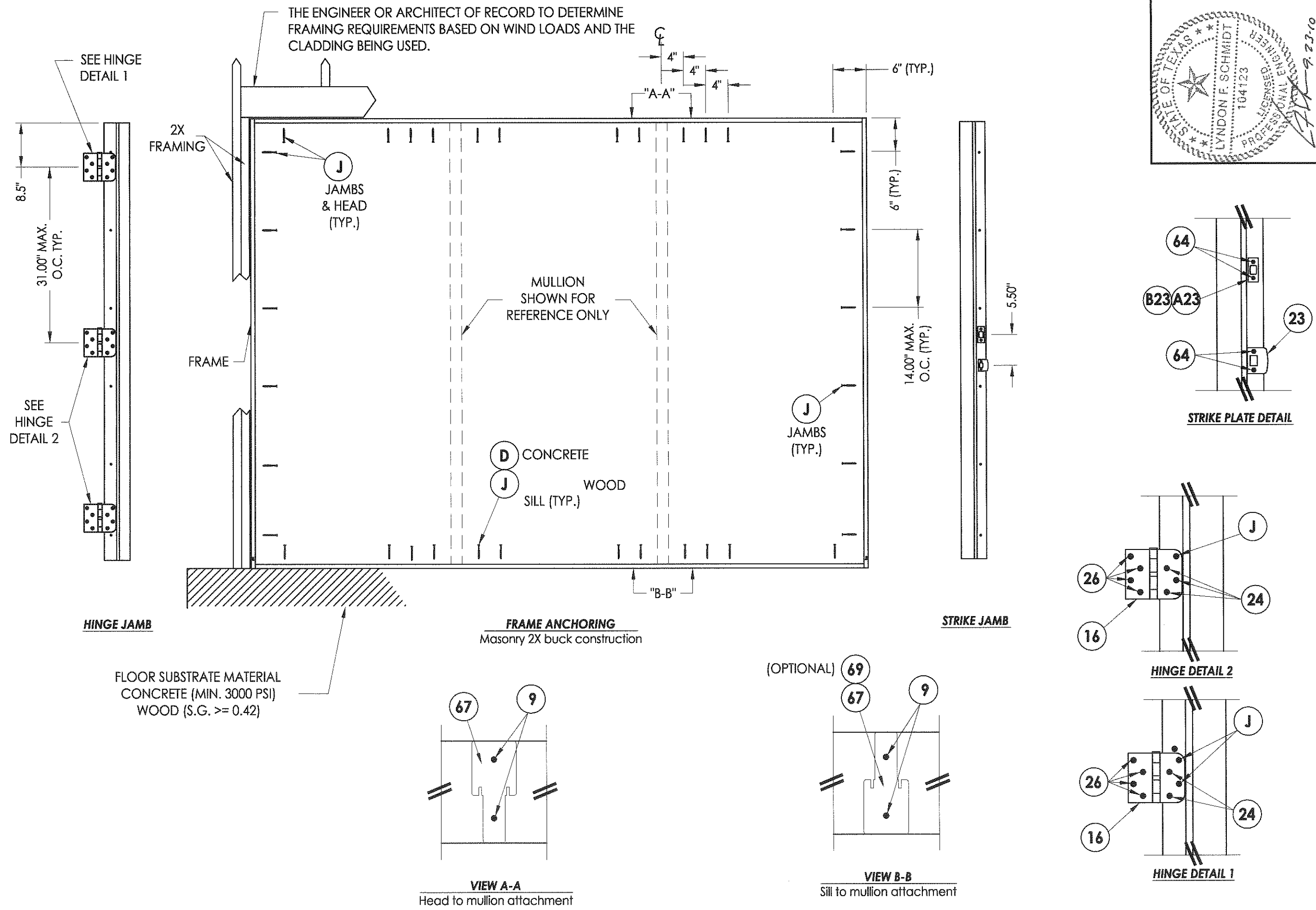
PRODUCT: RightConcept  
6'8 PREMIUM OPAQUE

PART OR ASSEMBLY:  
FRAME ANCHORING (XO/OX)

NO.	DATE	BY	REVISIONS

DATE: 9/21/10  
SCALE: N.T.S.  
DWG. BY: JK  
CHK. BY: LFS  
DRAWING NO.: TX-4107  
SHEET 9 OF 12

R:\A - Projects\Project Folders\Proj 1001-1100\p1098\RWBC Drawings\TX-4107.dwg, 10.1



Documents Prepared By: Lyndon F. Schmidt, P.E. TEXAS P.E. #104123

Building Consultants, Inc. P.O. Box 230 Vairico FL 33595 Phone No.: 813.659.9197

TEXAS BOARD OF PROFESSIONAL ENGINEERS CERTIFICATE OF REGISTRATION # F-11852

PRODUCT:	RightConcept 6'8 PREMIUM OPAQUE	
PART OR ASSEMBLY:	FRAME ANCHORING (OXO)	
NO.	DATE	BY
		REVISIONS
DATE:	9/21/10	
SCALE:	N.T.S.	
DWG. BY:	JK	
CHK. BY:	LFS	
DRAWING NO.:	TX-4107	
SHEET	10	of 12

© 2010 R.W. BUILDING CONSULTANTS INC.



