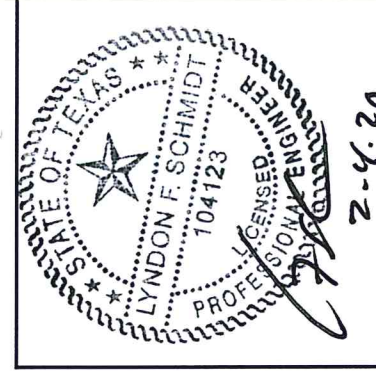




TRINITY GLASS
INTERNATIONAL

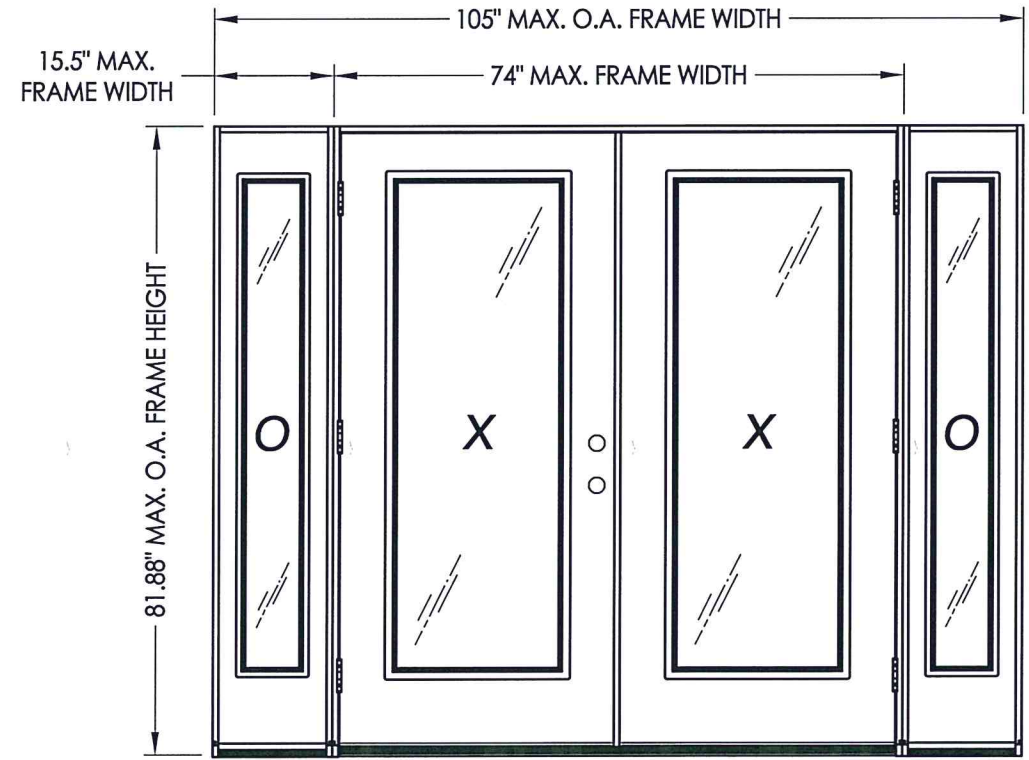
33615 1st Way S, Federal Way, WA 98003

6'0 X 6'8
FLUSH GLAZED FIBERGLASS
DOUBLE DOOR WITH SIDELITES (BOXED)
IN SWING / OUT SWING
"NON-IMPACT"



Documents Prepared By: Lyndon F. Schmidt, P.E.
TEXAS P.E. #104123

RW BUILDING CONSULTANTS, INC.
P.O. Box 230 Valrico FL 33595
Phone No.: 813.659.9197
TEXAS BOARD OF PROFESSIONAL ENGINEERS
CERTIFICATE OF REGISTRATION # F-11852



DOUBLE WITH BOXED SIDELITES

EVALUATED FOR USE IN THE STATE OF TEXAS

The Fiberglass Door system described herein complies with the 2018 International Residential Code (IRC), Sections R301 & R609 and the 2018 International Building Code (IBC), Sections 1404.13, 1609, 1709.5, 2403 and 2404 subject to the following conditions:

1. Anchors shall be as listed and spaced as shown in the details. Anchor embedment to base material shall be beyond wall dressing or stucco.
2. When used in areas requiring wind-borne debris protection this product is required to be protected with an impact resistant covering that complies with Section R301.2.1.2 of the IRC and Section 1609.2 of the IBC.
3. Allowable design pressure requirements must be equal to or less than the design pressure rating shown in the design pressure chart, sheet 1 of this drawing.
4. Conditions not covered by this drawing are subject to further engineering analysis.

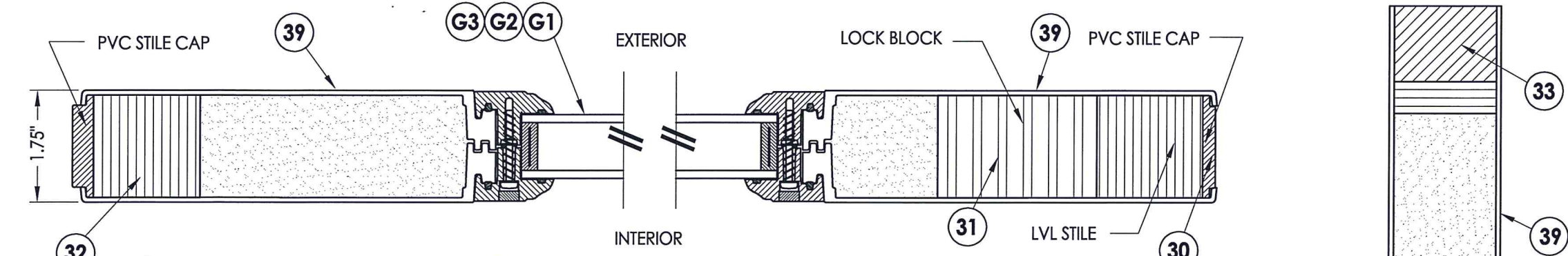
TABLE OF CONTENTS

SHEET #	DESCRIPTION
1	Typical elevations, design pressures & general notes
2	Door panel construction details & glazing details
3	Sidelite panel construction details & glazing details
4	Horizontal cross sections
5	Vertical cross sections
6	Vertical cross sections
7	Frame anchoring
8	Components
9	Endura astragal details
10	Bill of materials

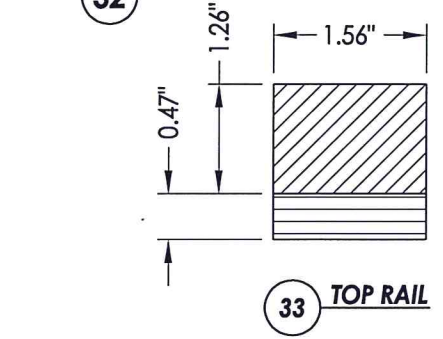
ASTRAGAL TYPE	SWING	MAX. FRAME DIMENSION	GLASS TYPE	DESIGN PRESSURE PSF)	
				POSITIVE	NEGATIVE
ENDURA	IN SWING	105.0" x 81.87"	G1, G2 & G3	+55.0	-60.0
	OUT SWING	105.0" x 80.75"		+55.0	-55.0

PRODUCT:	TRINITY GLASS INT'L 6'8 FLUSH GLAZED
PART OR ASSEMBLY:	TYPICAL ELEVATION, DESIGN PRESSURES & GENERAL NOTES
DATE:	8/29/05
SCALE:	N.T.S.
DWG. BY:	WH
CHK. BY:	LFS
DRAWING NO.:	TX-4038
SHEET	1 OF 10

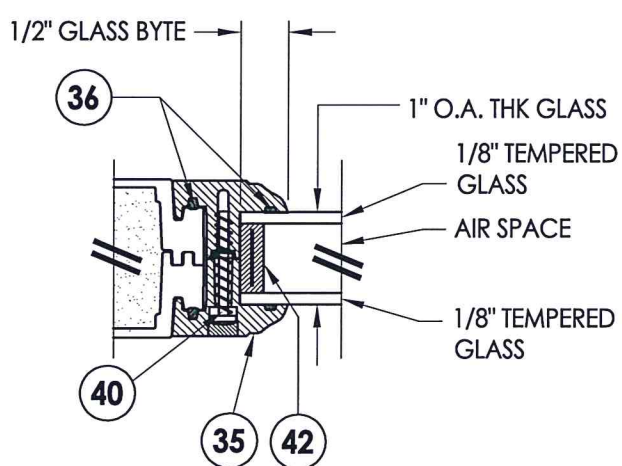
R:\Clients\Trinity Glass Permanent\B - Texas Dept of Ins\DR 181\1C - Drawings\DR-181 2018 IBC\TX-4038.dwg, 2



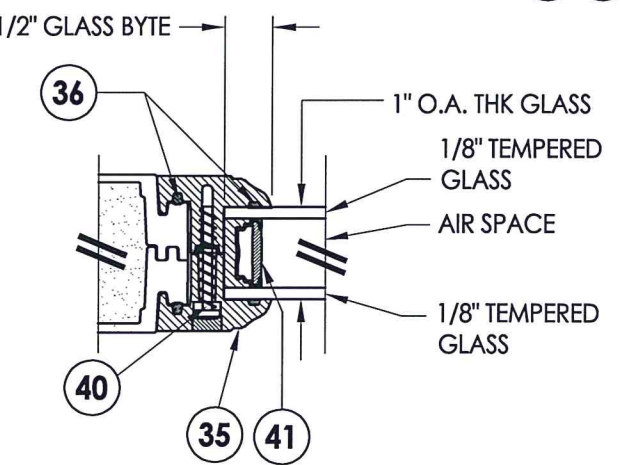
1 HORIZONTAL CROSS SECTION



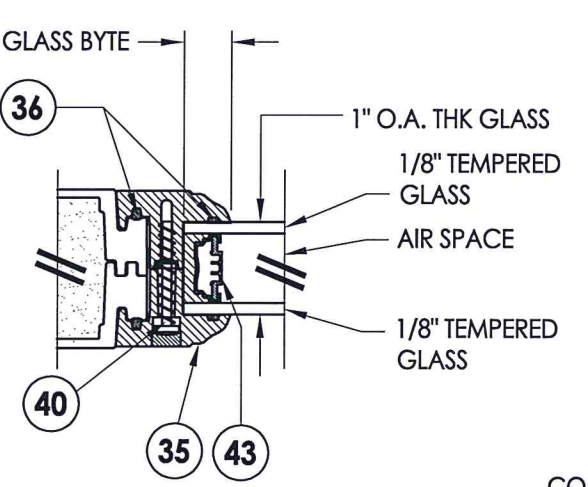
33 TOP RAIL



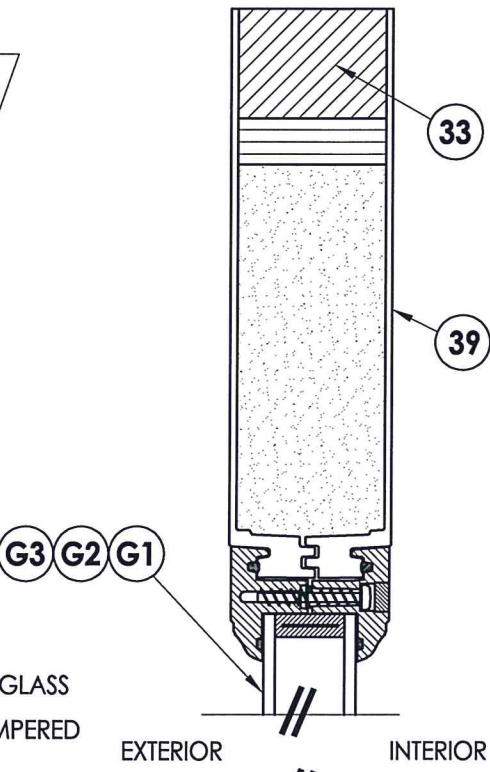
G1 GLAZING DETAIL



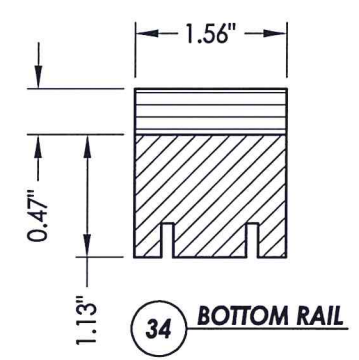
G2 GLAZING DETAIL



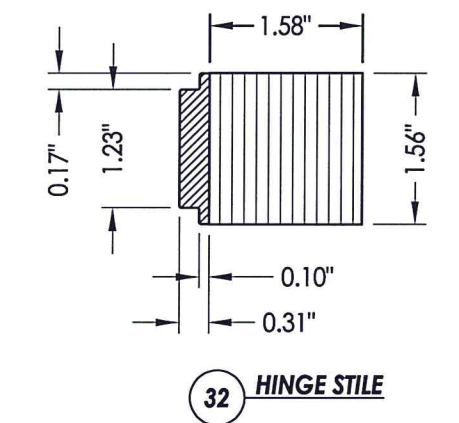
G3 GLAZING DETAIL



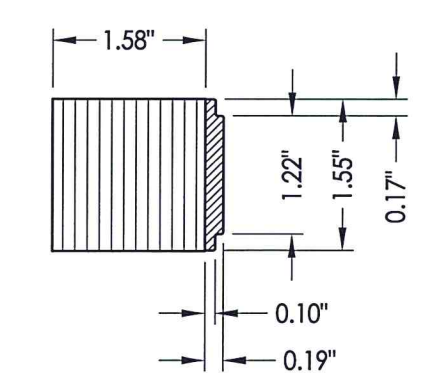
2 VERTICAL CROSS SECTION



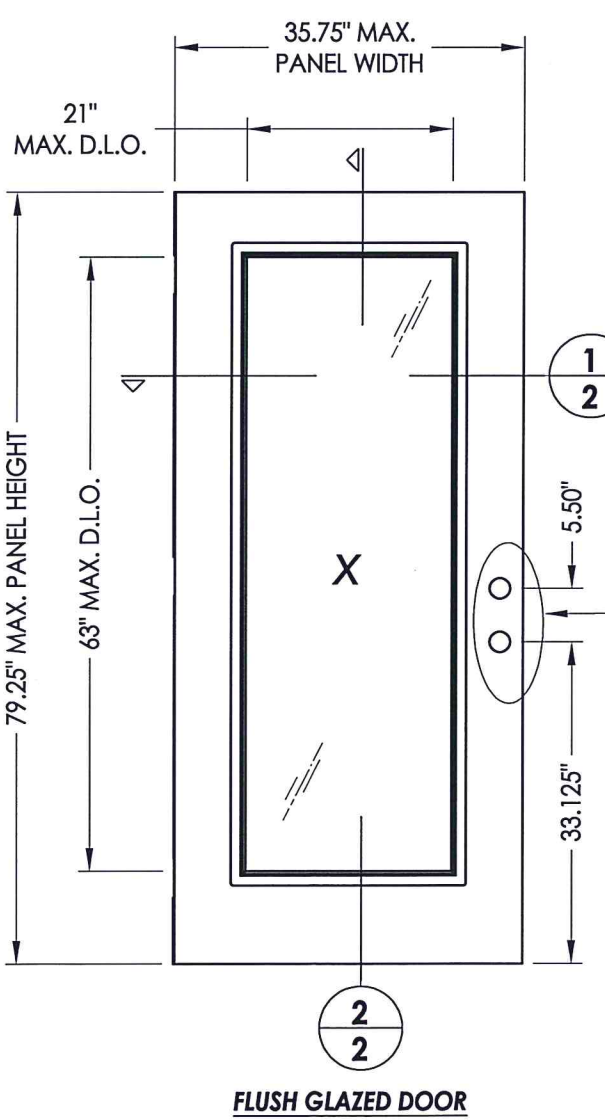
34 BOTTOM RAIL



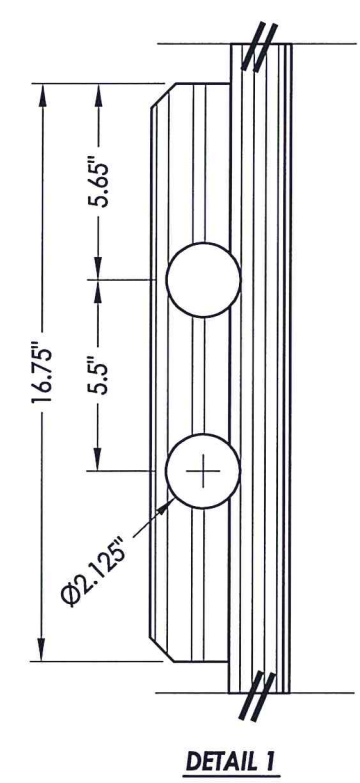
32 HINGE STILE



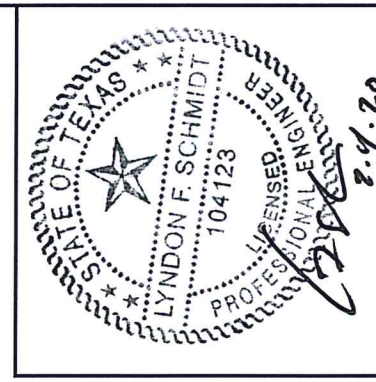
30 LATCH STILE



FLUSH GLAZED DOOR



DETAIL 1



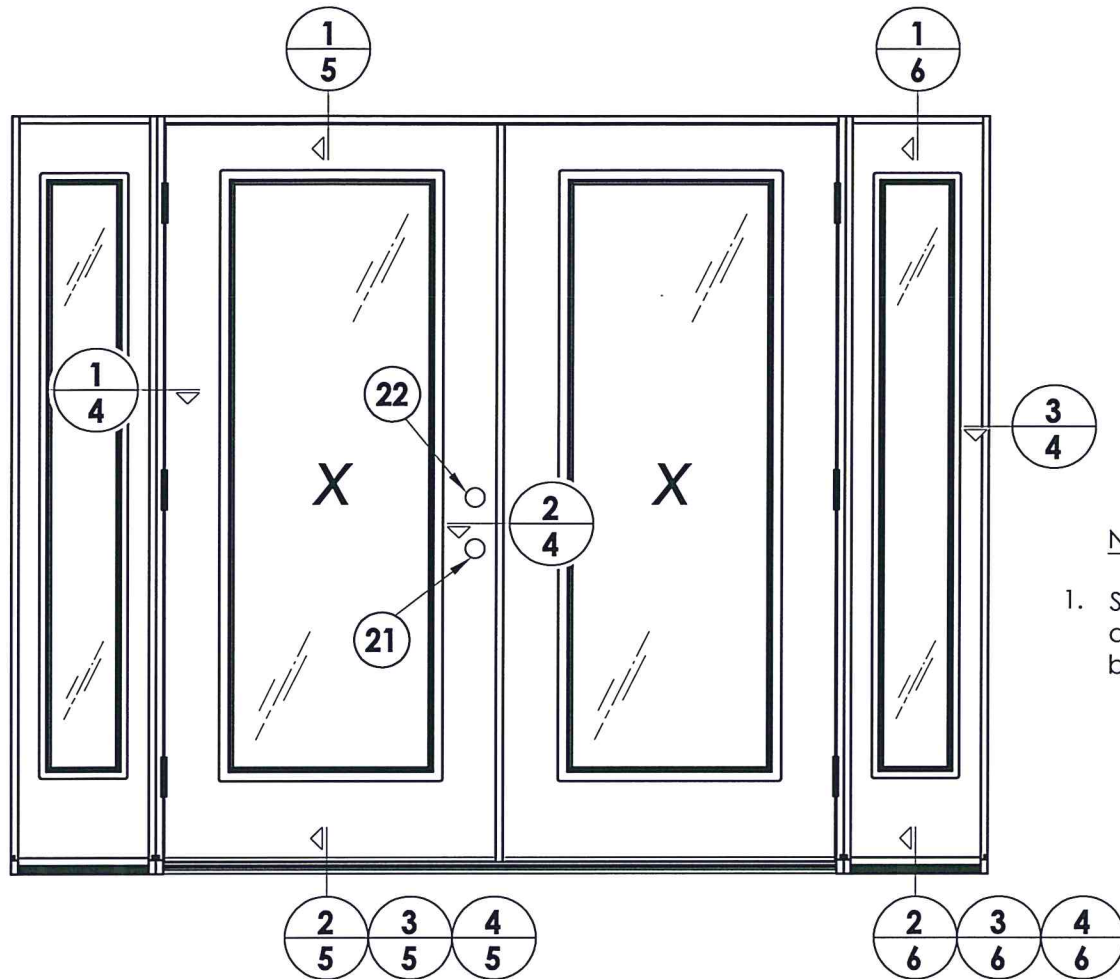
Documents Prepared By: Lyndon F. Schmidt, P.E.
TEXAS P.E. #104123

RW BUILDING CONSULTANTS, INC.
P.O. Box 230 Vairico FL. 33595
Phone No.: 813.659.9197
TEXAS BOARD OF PROFESSIONAL ENGINEERS
CERTIFICATE OF REGISTRATION # F-11852

PRODUCT: TRINITY GLASS INT'L
6'8" FLUSH GLAZED
PART OR ASSEMBLY:
DOOR PANEL CONSTRUCTION
DETAILS & GLAZING DETAILS

NO.	DATE	REVISIONS
3	2/03/20	UPDATE TO 2018 IBC/IRC
2	7/27/09	TDI PRODUCT EVALUATION UPDATE
1	6/28/06	REVISED LOCKSET NOMENCLATURE

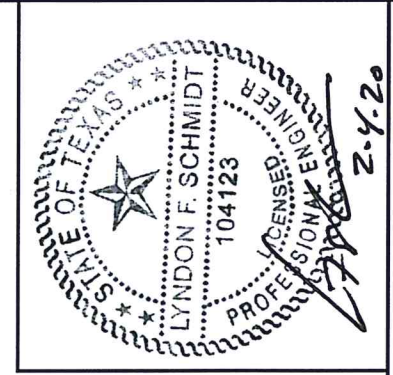
DATE: 8/29/05
SCALE: N.T.S.
DWG. BY: WH
CHK. BY: LFS
DRAWING NO.: TX-4038
SHEET 2 OF 10



LOCK & DEADBOLT RATINGS CHART				
MANUFACTURER	MODEL	ITEM #	MAX. DESIGN PRESSURE (PSF)	
			POSITIVE	NEGATIVE
KWIKSET	LOCK: 740	21	+55.0	-60.0
	DEADBOLT: 780	22		
KWIKSET	LOCK: COMBO 660	21	+55.0	-60.0
	DEADBOLT: COMBO 660	22		
SCHLAGE	LOCK: MAX. SECURITY	21	+55.0	-60.0
	DEADBOLT: MAX. SECURITY	22		

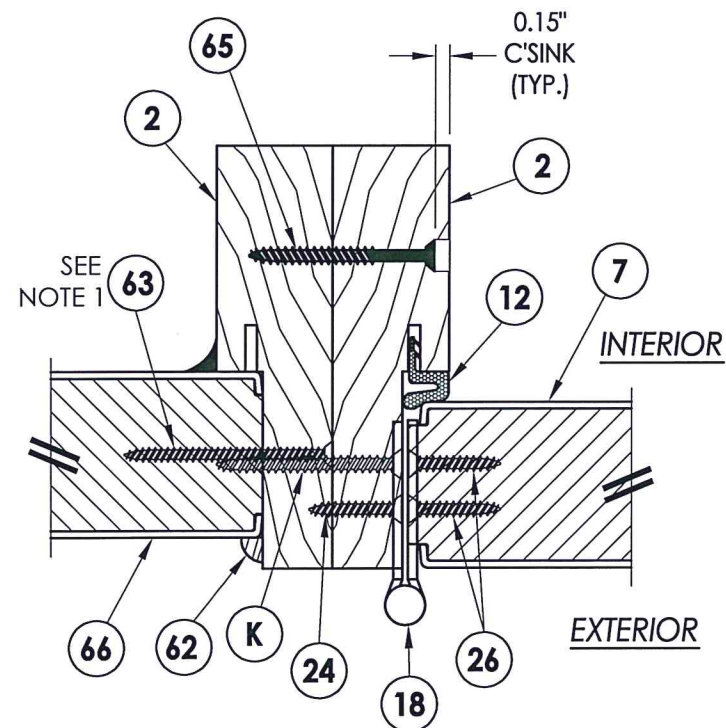
NOTE:

- Sidelite ass'y fastener: 6" from each end and 4 more screws equally spaced between (6 screws total per jamb).

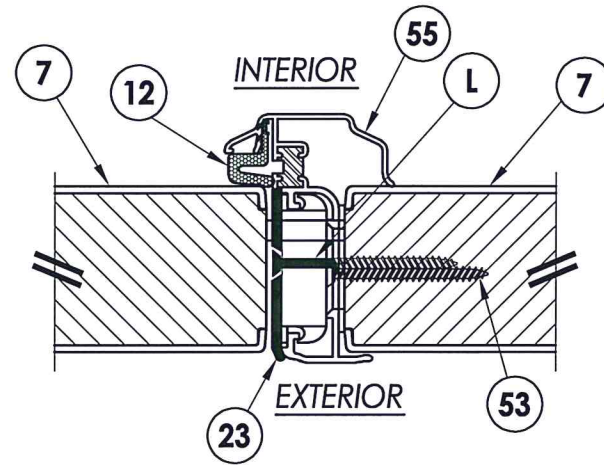


Documents Prepared By: Lyndon F. Schmidt, P.E.
TEXAS P.E. #104123

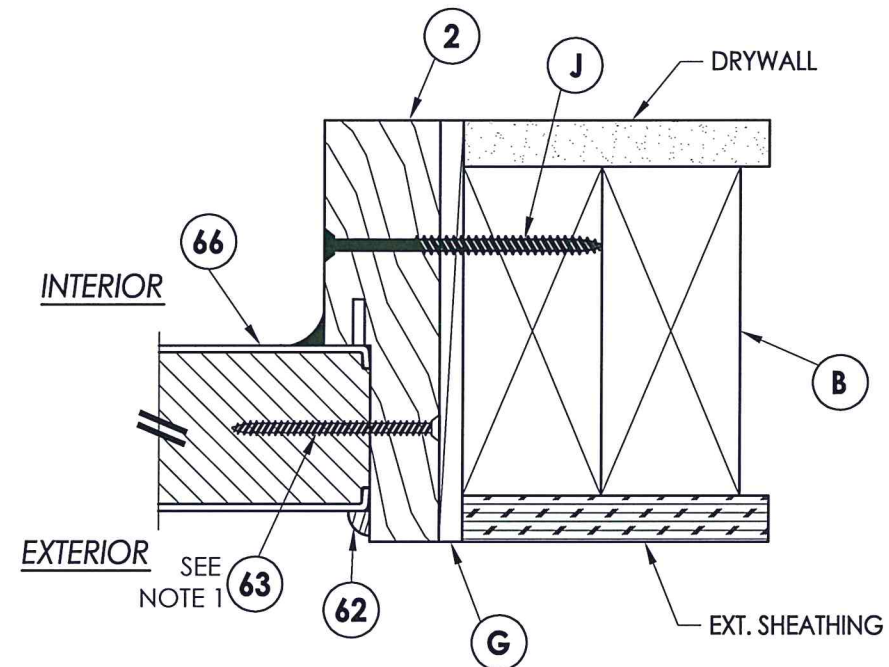
RW BUILDING CONSULTANTS, INC.
P.O. Box 230 Vairico FL, 33595
Phone No.: 813.659.9197
TEXAS BOARD OF PROFESSIONAL ENGINEERS
CERTIFICATE OF REGISTRATION # F-11852



1 HORIZONTAL CROSS SECTION
4 Outswing shown
Inswing also approved



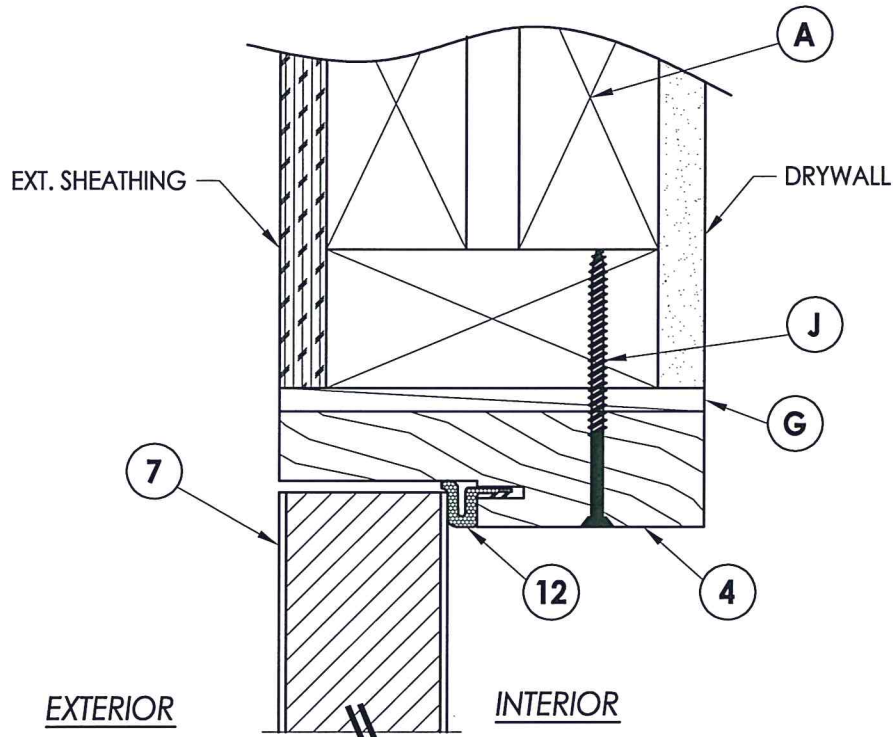
2 HORIZONTAL CROSS SECTION
4 Endura astragal



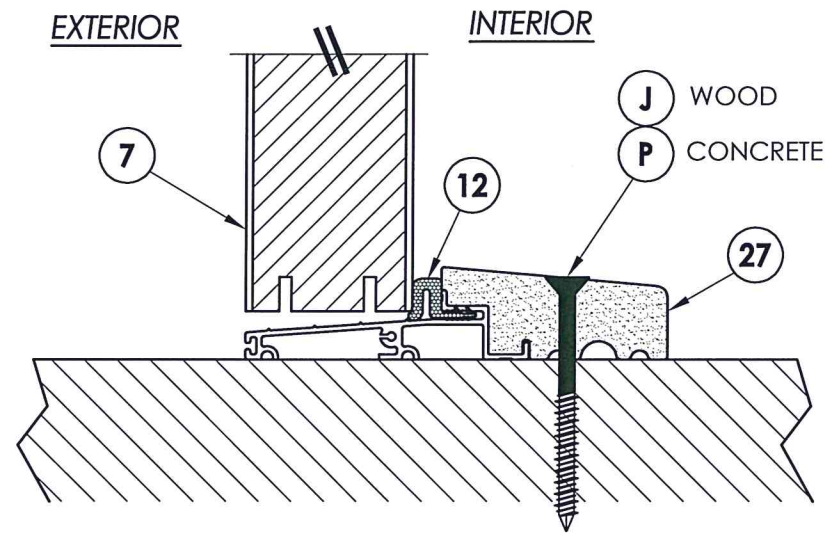
3 HORIZONTAL CROSS SECTION
4 Outswing shown
Inswing also approved

PRODUCT:	TRINITY GLASS INT'L 6 8 FLUSH GLAZED	
PART OR ASSEMBLY:	HORIZONTAL CROSS SECTIONS	
NO.	DATE	REVISIONS
3	2/03/20	UPDATE TO 2018 IBC/IRC
2	7/27/09	TDI PRODUCT EVALUATION UPDATE
1	6/28/06	REVISED LOCKSET NOMENCLATURE
		EW
		BY
		LFS
		AL
		DATE
		8/29/05
		N.T.S.
		WH
		LFS
		TX-4038
		4 OF 10

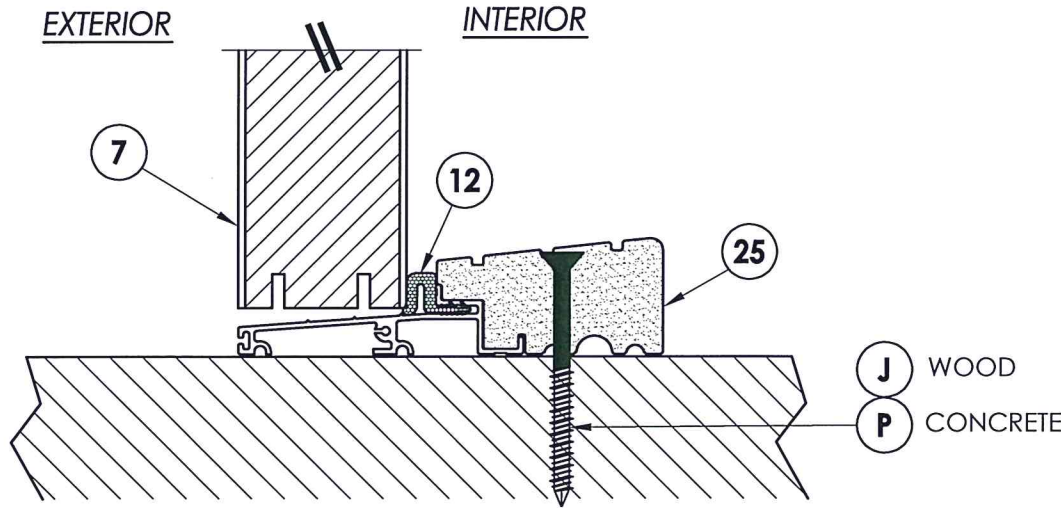
R:\Clients\Trinity Glass PERMANENT\B - Texas Dept of Ins\DR 181\C - Drawings\DR-181 2018 IBC\TX-4038.dwg, 5



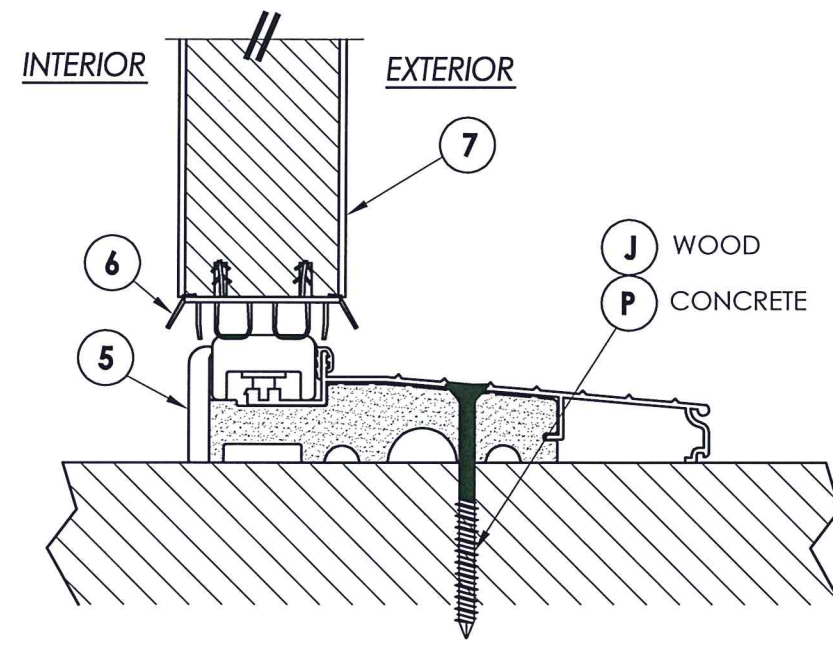
1 VERTICAL CROSS SECTION
5 Outswing shown
 Inswing also approved



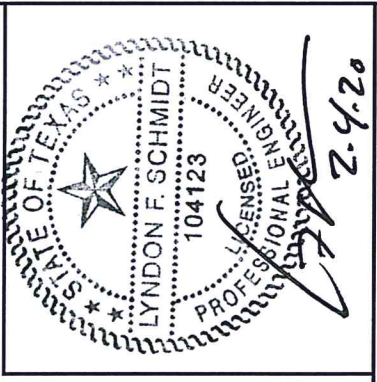
2 VERTICAL CROSS SECTION
5 Outswing configuration



3 VERTICAL CROSS SECTION
5 Outswing configuration



4 VERTICAL CROSS SECTION
5 Inswing configuration



Documents Prepared By: Lyndon F. Schmidt, P.E.
 TEXAS P.E. #104123

RW BUILDING CONSULTANTS, INC.
 P.O. Box 230 Valrico FL, 33595
 Phone No.: 813.659.9197

TEXAS BOARD OF PROFESSIONAL ENGINEERS
 CERTIFICATE OF REGISTRATION # F-11852

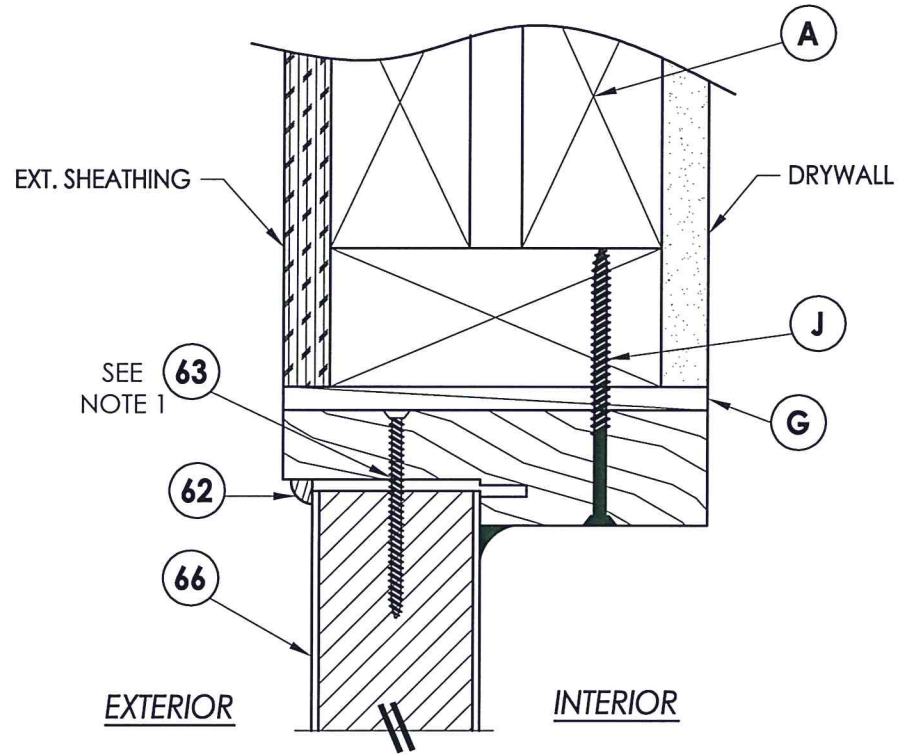
PRODUCT: TRINITY GLASS INT'L
 6'8 FLUSH GLAZED

PART OR ASSEMBLY:
 VERTICAL CROSS SECTIONS

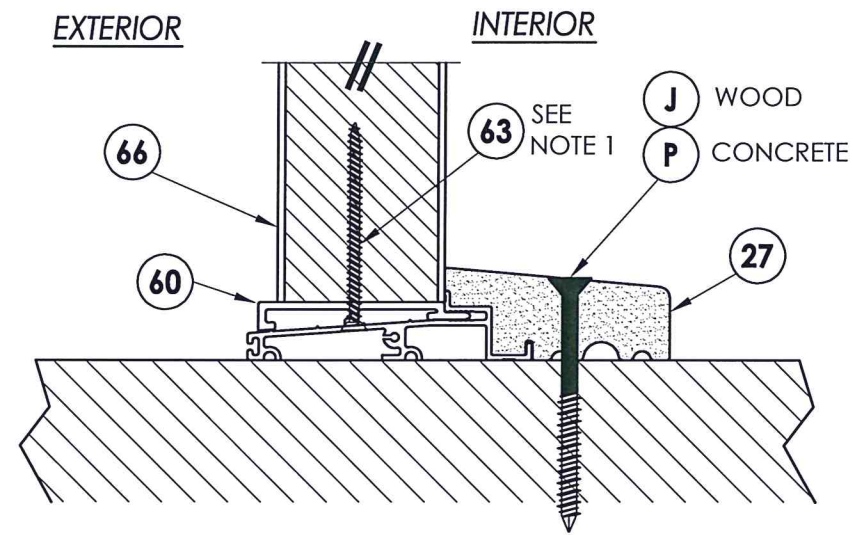
NO.	DATE	REVISIONS
3	2/03/20	UPDATE TO 2018 IBC/IRC
2	7/27/09	TDI PRODUCT EVALUATION UPDATE
1	6/28/06	REVISED LOCKSET NOMENCLATURE
		EW
		BY

DATE: 8/29/05
 SCALE: N.T.S.
 DWG. BY: WH
 CHK. BY: LFS
 DRAWING NO.: TX-4038
 SHEET 5 OF 10

R:\Clients\Trinity Glass PERMANENT\B - Texas Dept of Ins\DR 181\C - Drawings\DR-181 2018 IBC\TX-4038.dwg, 6



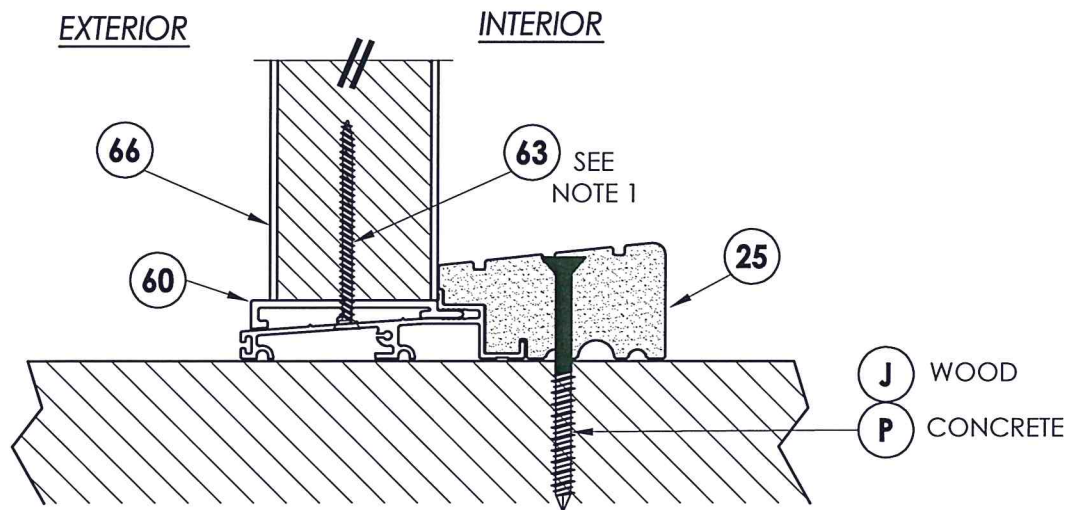
1 VERTICAL CROSS SECTION
6 Outswing shown
 Inswing also approved



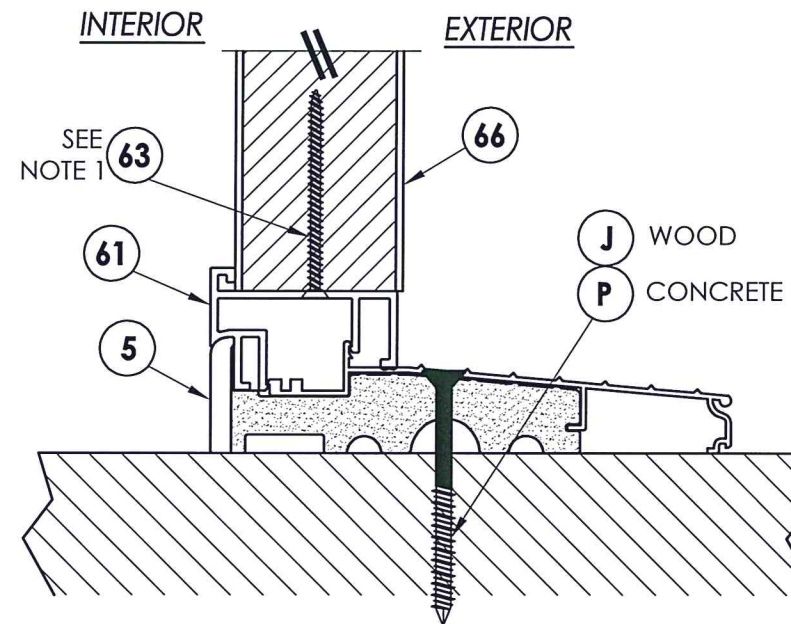
2 VERTICAL CROSS SECTION
6 Outswing configuration

NOTE:

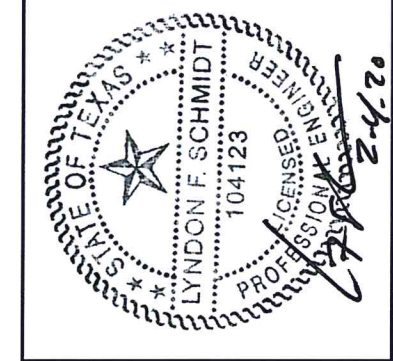
1. Screws thru head and sill jamb located 3" from each end and on center line.



3 VERTICAL CROSS SECTION
6 Outswing configuration



4 VERTICAL CROSS SECTION
6 Inswing configuration



Documents Prepared By: Lyndon F. Schmidt, P.E.
 TEXAS P.E. #104123

RW BUILDING CONSULTANTS, INC.
 P.O. Box 230 Vairlico FL 33595
 Phone No.: 813.659.9197

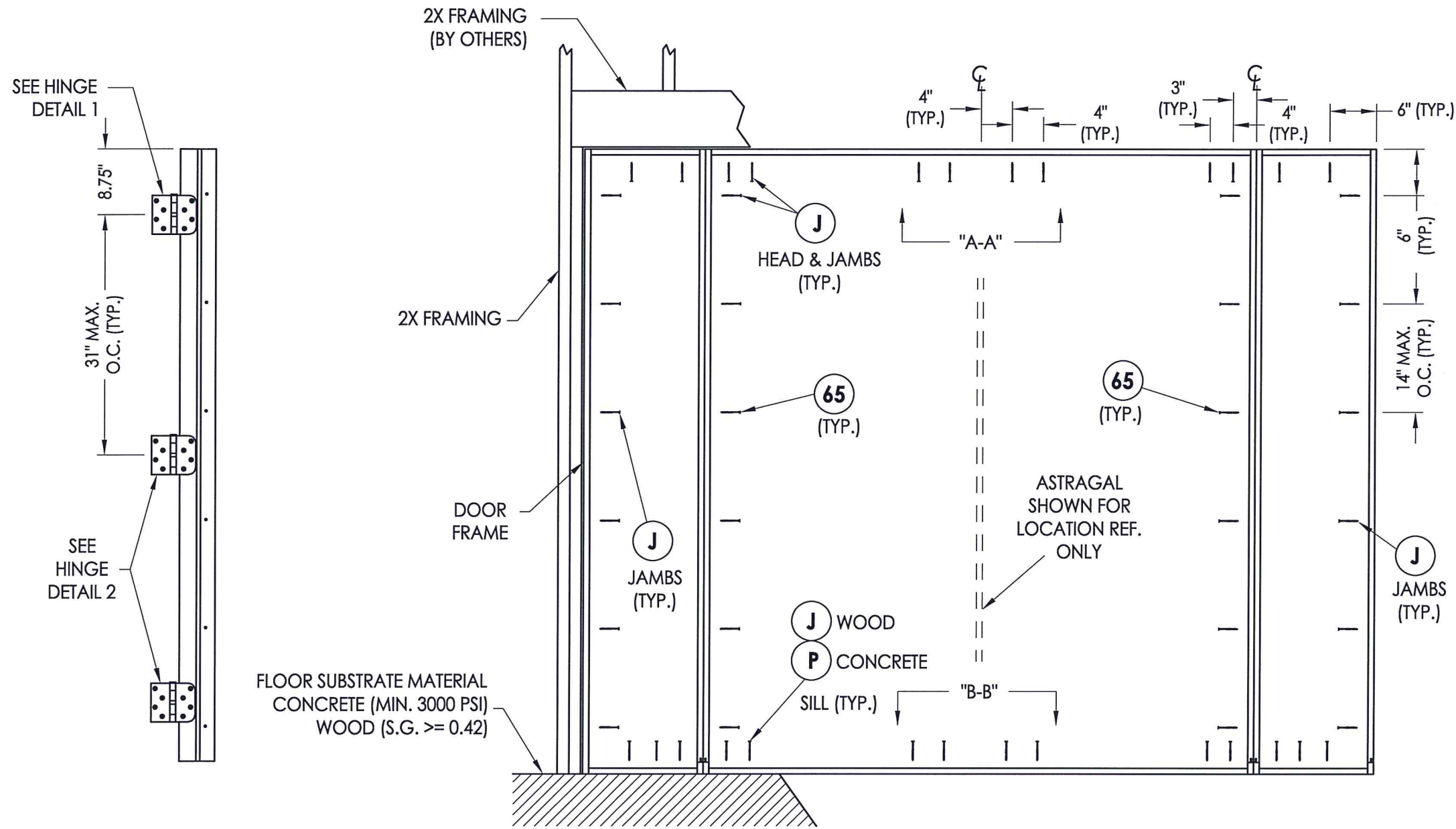
TEXAS BOARD OF PROFESSIONAL ENGINEERS
 CERTIFICATE OF REGISTRATION # F-11852

PRODUCT: TRINITY GLASS INT'L
 6'8 FLUSH GLAZED
 PART OR ASSEMBLY:
 VERTICAL CROSS SECTIONS

NO.	DATE	REVISIONS
3	2/03/20	UPDATE TO 2018 IBC/IRC
2	7/27/09	TDI PRODUCT EVALUATION UPDATE
1	6/28/06	REVISED LOCKSET NOMENCLATURE
		EW
		BY

DATE: 8/29/05
 SCALE: N.T.S.
 DWG. BY: WH
 CHK. BY: LFS
 DRAWING NO.: TX-4038
 SHEET 6 of 10

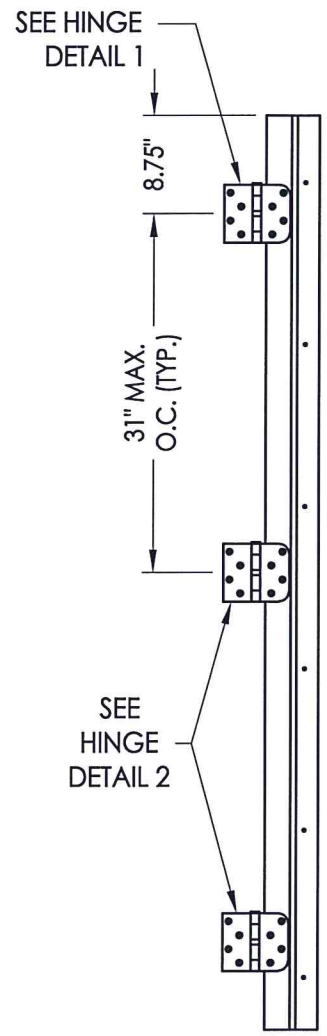
R:\Clients\Trinity Glass PERMANENT\B - Texas Dept of Ins\DR 181\181 - Drawings\DR-181 2018 IBC\TX-4038.dwg, 7



Documents Prepared By: Lyndon F. Schmidt, P.E.
 TEXAS P.E. #104123

RW BUILDING CONSULTANTS, INC.
 P.O. Box 230 Vairico FL 33595
 Phone No.: 813.659.9197

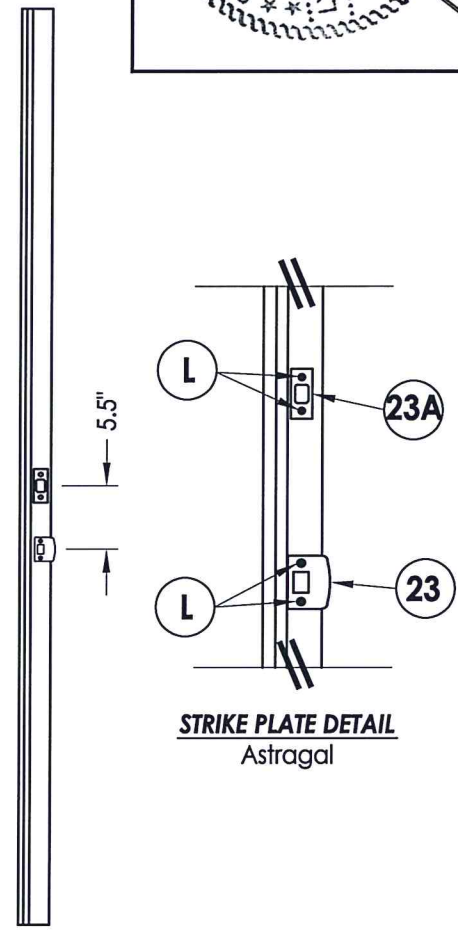
TEXAS BOARD OF PROFESSIONAL ENGINEERS
 CERTIFICATE OF REGISTRATION # F-11852



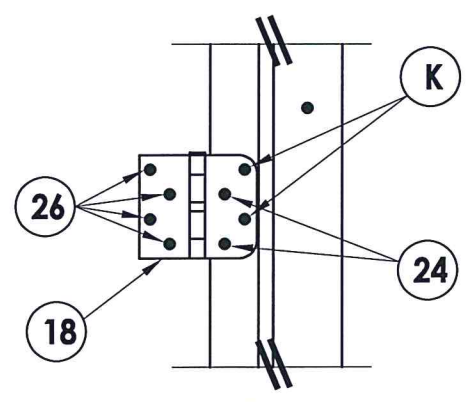
HINGE JAMB

FRAME ANCHORING
 Stud construction

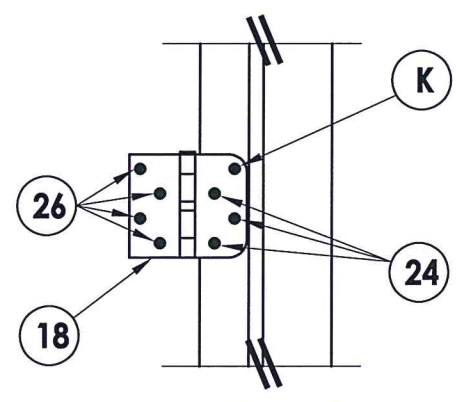
ASTRAGAL



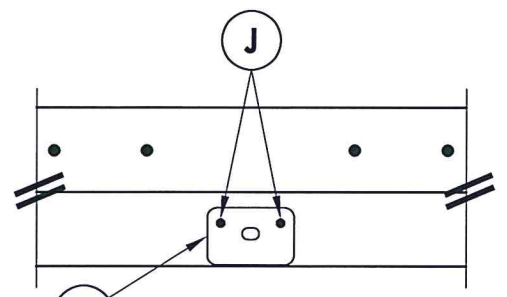
STRIKE PLATE DETAIL
 Astragal



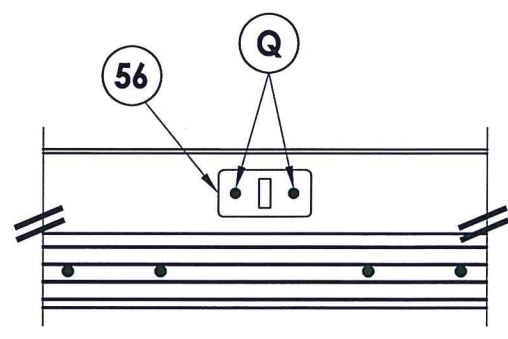
HINGE DETAIL 1



HINGE DETAIL 2



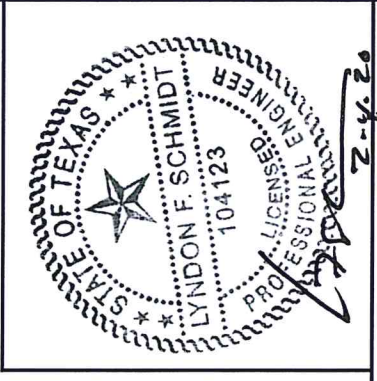
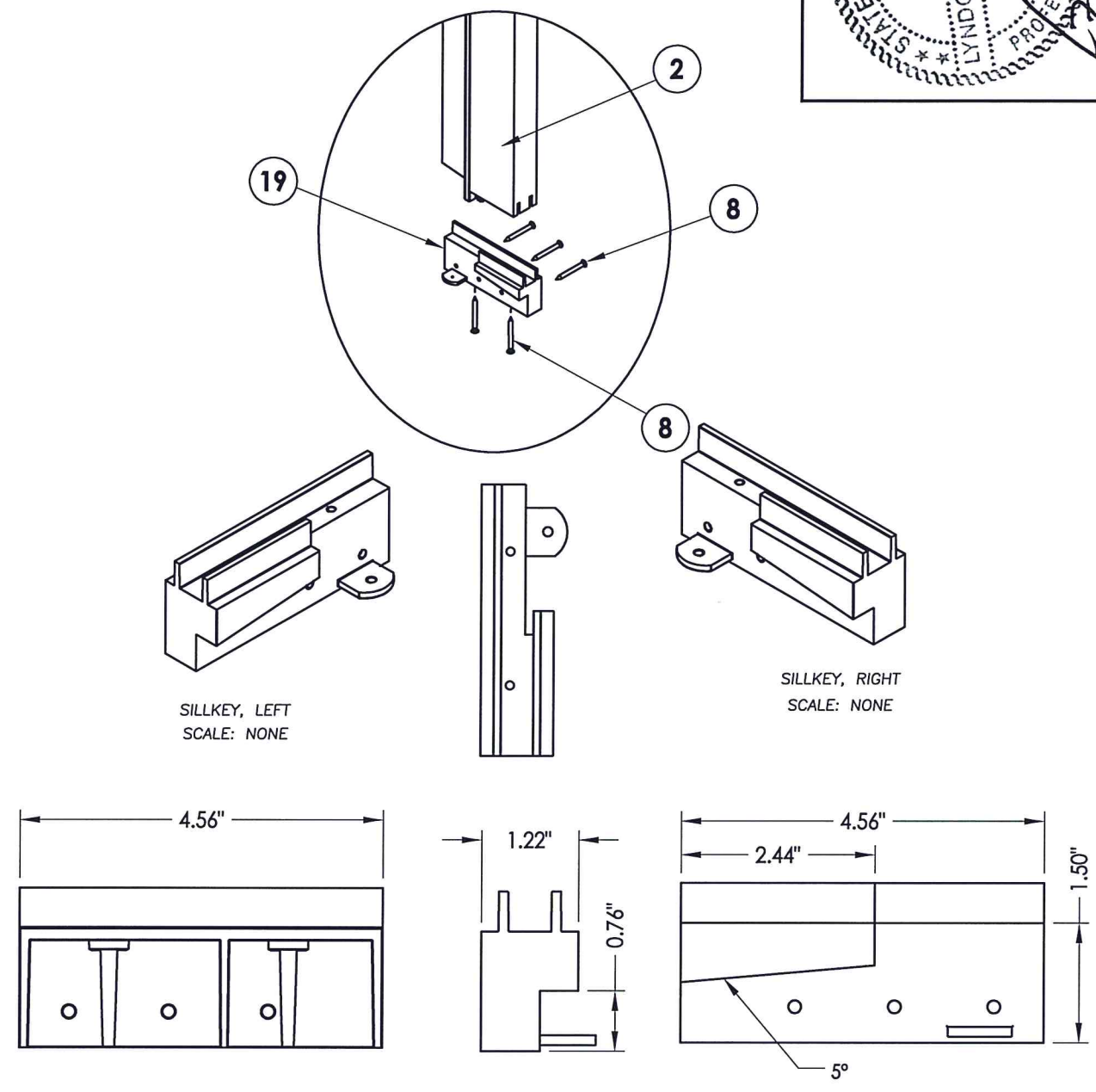
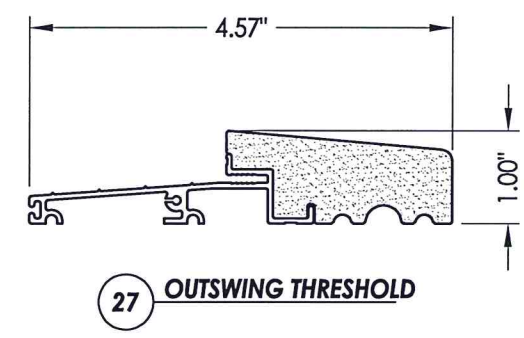
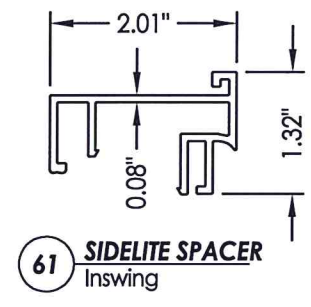
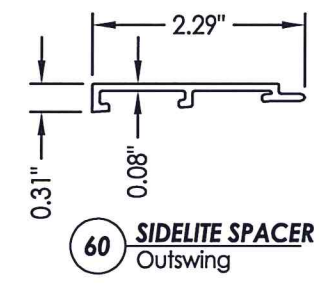
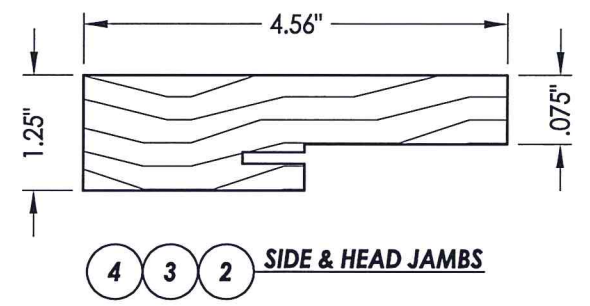
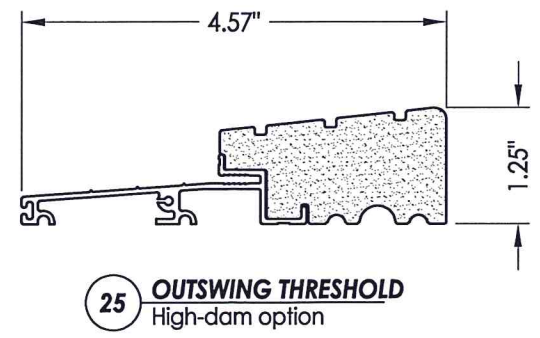
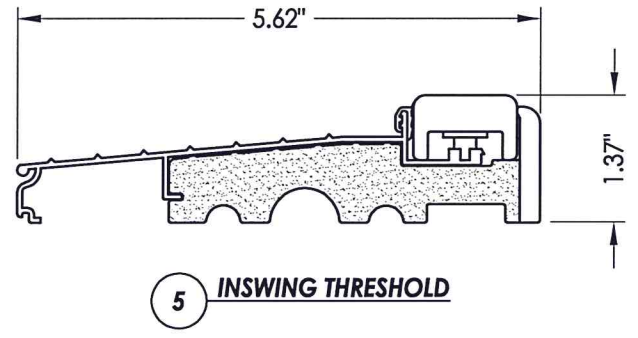
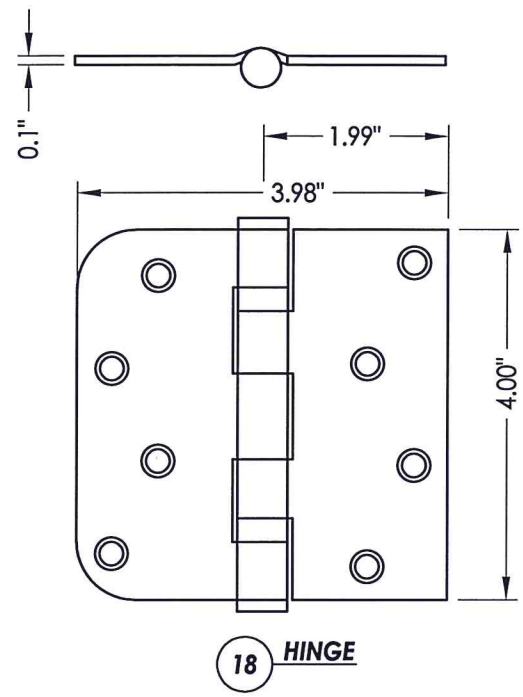
VIEW A-A
 Astragal strike @ head



VIEW B-B
 Astragal strike @ sill

PRODUCT:		TRINITY GLASS INT'L 6 8 FLUSH GLAZED	
PART OR ASSEMBLY:		FRAME ANCHORING	
NO.	DATE	REVISIONS	BY
3	2/03/20	UPDATE TO 2018 IBC/IRC	LFS
2	7/27/09	TDI PRODUCT EVALUATION UPDATE	AL
1	6/28/06	REVISED LOCKSET NOMENCLATURE	EW

DATE: 8/29/05
 SCALE: N.T.S.
 DWG. BY: WH
 CHK. BY: LFS
 DRAWING NO.: TX-4038
 SHEET 7 OF 10



Documents Prepared By: Lyndon F. Schmidt, P.E.
TEXAS P.E. #104123

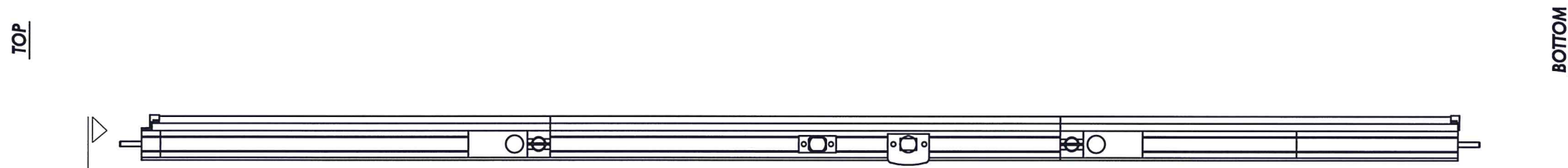
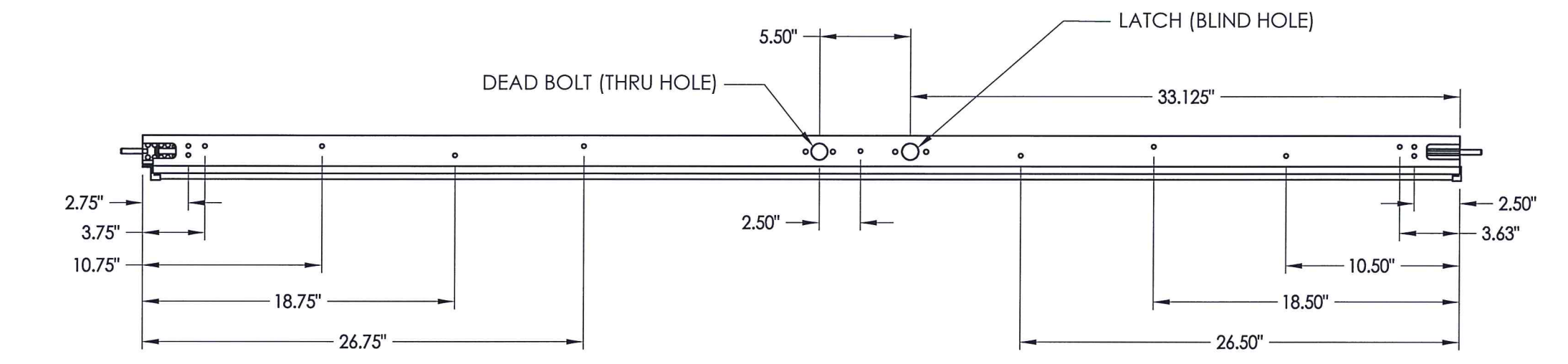
RW BUILDING CONSULTANTS, INC.
P.O. Box 230 Vairico FL, 33595
Phone No.: 813.659.9197

TEXAS BOARD OF PROFESSIONAL ENGINEERS
CERTIFICATE OF REGISTRATION # F-11852

PRODUCT:	TRINITY GLASS INT'L 6 8 FLUSH GLAZED
PART OR ASSEMBLY:	COMPONENTS

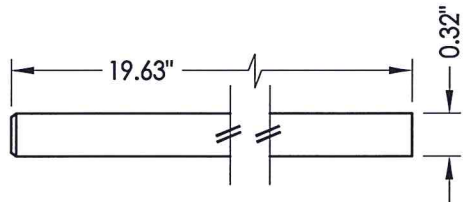
NO.	DATE	REVISIONS
3	2/03/20	UPDATE TO 2018 IBC/IRC LFS
2	7/27/09	TDI PRODUCT EVALUATION UPDATE AL
1	6/28/06	REVISED LOCKSET NOMENCLATURE EW

DATE:	8/29/05
SCALE:	N.T.S.
DWG. BY:	WH
CHK. BY:	LFS
DRAWING NO.:	TX-4038
SHEET	8 of 10

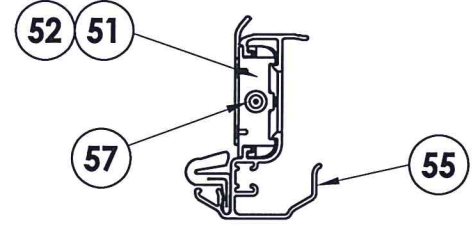


6'8 ALUMINUM ASTRAGAL ASSEMBLY
By Endura Products

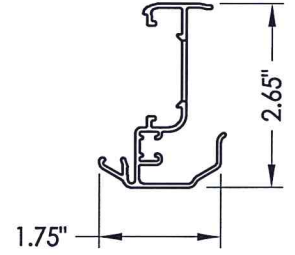
A-A



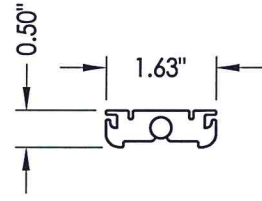
57 SLIDE BOLT ROD
MATL: Steel



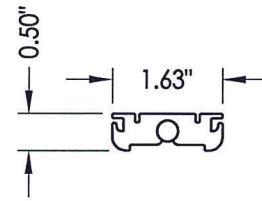
VIEW A-A
Aluminum Astragal Assembly



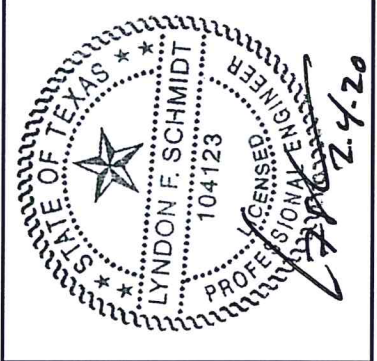
55 ALUMINUM ASTRAGAL
By Endura Products



52 TOP BOLT RETAINER
MATL: 9-3/4\"/>



51 TOP BOLT RETAINER
MATL: 4-3/4\"/>



Documents Prepared By: Lyndon F. Schmidt, P.E.
TEXAS P.E. #104123

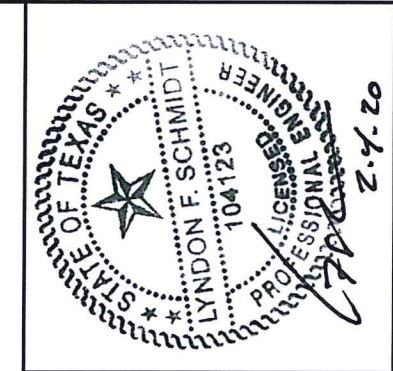
RW BUILDING CONSULTANTS, INC.
P.O. Box 230 Vairico FL 33595
Phone No.: 813.659.9197

TEXAS BOARD OF PROFESSIONAL ENGINEERS
CERTIFICATE OF REGISTRATION # F-11852

PRODUCT:	TRINITY GLASS INT'L 6 8 FLUSH GLAZED
PART OR ASSEMBLY:	ENDURA ASTRAGAL DETAILS

NO.	DATE	REVISIONS
3	2/03/20	UPDATE TO 2018 IBC/IRC
2	7/27/09	TDI PRODUCT EVALUATION UPDATE
1	6/28/06	REVISED LOCKSET NOMENCLATURE
		BY

DATE:	8/29/05
SCALE:	N.T.S.
DWG. BY:	WH
CHK. BY:	LFS
DRAWING NO.:	TX-4038
SHEET	9 of 10



Documents Prepared By: Lyndon F. Schmidt, P.E.
TEXAS P.E. #104123

RW BUILDING CONSULTANTS, INC.
P.O. Box 230 Valrico FL, 33595
Phone No.: 813.659.9197

TEXAS BOARD OF PROFESSIONAL ENGINEERS
CERTIFICATE OF REGISTRATION # F-11852

BILL OF MATERIALS

ITEM	DESCRIPTION	MATERIAL	ITEM	DESCRIPTION	MATERIAL
A	2X HEADER FRAMING SG >= 0.42	WOOD	36	GLAZING COMPOUND	SILICONE
B	2X FRAMING SG >= 0.42	WOOD	39	FIBERGLASS SKIN 0.079" MIN. THICKNESS	FIBERGLASS
G	MAX. 1/4" SHIM SPACE	WOOD	40	#8 X 1-1/8" SELF THREADING SCREW	STEEL
J	#10 X 3" PFH WS	STEEL	41	POLYPROPYLENE & PVC COMBINATION GLAZING SPACER	POLY.
K	#9 X 2" PFH WS	STEEL	42	ALUMINUM & BUTYL SPACER SYSTEM	ALUM./BUTYL
L	#8 X 2-1/2" PFH WS	STEEL	43	PVC & ALUMINUM SPACER SYSTEM	PVC/ ALUM.
P	3/16" X 2-3/4" ELCO OR ITW PFH CONCRETE SCREW	STEEL	60	SIDELITE SPACER - OUTSWING	PVC
Q	3/16" X 3-1/4" ELCO OR ITW PFH CONCRETE SCREW	STEEL	61	SIDELITE SPACER - INSWING	PVC
2	STRIKE JAMB - FINGER-JOINT PINE - SG >= 0.42	WOOD	62	QUARTER ROUND	WOOD
3	HINGE JAMB - FINGER-JOINT PINE - SG >= 0.42	WOOD	63	#8 X 2-1/4" PFH SCREW	STEEL
4	HEAD - FINGER-JOINT PINE - SG >= 0.42	WOOD	65	#10 X 2" PFH SCREW	STEEL
5	INSWING THRESHOLD ALUMINUM W/ COMPOSITE SUBSTRATE	ALUMINUM	66	SIDELITE PANEL - SEE SIDELITE PANEL DETAIL SHEET FOR CONSTRUCTION DETAILS	-
6	DOOR BOTTOM SWEEP	PVC	70	LVL SIDELITE STILE	POPLAR
7	DOOR PANEL - SEE DOOR PANEL DETAIL SHEET FOR CONSTRUCTION DETAILS	-	71	LVL SIDELITE TOP RAIL	POPLAR
8	#6 X 1-1/4 PFH DRYWALL SCREW	STEEL	72	LVL SIDELITE BOTTOM RAIL	POPLAR
12	WEATHER STRIP QEBD650 Q-LON	-	50	FLUSHBOLT BAR	STEEL
18	3.983" X 4.0" HINGE MIN 0.098" THICK	STEEL	51	4-3/4" LENGTH TOP BOLT RETAINER	HDPE
19	SILLKEY	PC/ASA	52	9-8/4" LENGTH TOP BOLT RETAINER	ALUMINUM
21	LOCK (SEE LOCK & DEADBOLT RATINGS CHART)	STEEL	53	#8 X 1-3/4" PFH SMS	STEEL
22	DEADBOLT (SEE LOCK & DEADBOLT RATINGS CHART)	STEEL	54	ASTRAGAL STRIKE @ HEAD	STEEL
23	STRIKE PLATE	STEEL	55	ASTRAGAL BY ENDURA PRODUCTS	ALUMINUM
23A	DEADBOLT PLATE	STEEL	56	ASTRAGAL STRIKE @ SILL	STEEL
24	#9 X 5/8" PFH WS	STEEL	57	SLIDE BOLT ROD	STEEL
25	OUTSWING HIGH-DAM THRESHOLD ALUMINUM W/ COMPOSITE SUBSTRATE	ALUM./ COMP.			
26	#9 X 1" PFH WS	STEEL			
27	OUTSWING THRESHOLD ALUMINUM W/ COMPOSITE SUBSTRATE	ALUM./ COMP.			
30	LATCH STILE - SG >= 0.42	LVL/PVC			
31	LVL LOCK BLOCK	POPLAR			
32	HINGE STILE - SG >= 0.42	LVL/PVC			
33	TOP RAIL - POPLAR LVL & WPC COMBINATION	POPLAR/WPC			
34	BOTTOM RAIL - POPLAR LVL & WPC COMBINATION	POPLAR/WPC			
35	LITE FRAME	PC/ASA			

CONCRETE ANCHOR NOTES:

- Concrete anchor locations at the corners may be adjusted to maintain the min. edge distance to mortar joints.
- Concrete anchor locations noted as "MAX. ON CENTER" must be adjusted to maintain the min. edge distance to mortar joints, additional concrete anchors may be required to ensure the "MAX. ON CENTER" dimension are not exceeded.
- Concrete anchor table:

ANCHOR TYPE	ANCHOR SIZE	MIN. EMBEDMENT	MIN. CLEARANCE TO MASONRY EDGE	MIN. CLEARANCE TO ADJACENT ANCHOR
ITW BUILDEX TAPCON®	1/4"	1-3/4"	2"	4"
ELCO ULTRACON®	1/4"	1-3/4"	1"	4"

WOOD SCREW INSTALLATION NOTES:

- Maintain a minimum 5/8" edge distance, 1" end distance, & 1" o.c. spacing of wood screws to prevent the splitting of wood.

PRODUCT: TRINITY GLASS INT'L
6'8 FLUSH GLAZED

PART OR ASSEMBLY: BILL OF MATERIALS & COMPONENTS

NO.	DATE	REVISIONS
3	2/03/20	UPDATE TO 2018 IBC/IRC
2	7/27/09	TDI PRODUCT EVALUATION UPDATE
1	6/28/06	REVISED LOCKSET NOMENCLATURE

DATE: 8/29/05
SCALE: N.T.S.
DWG. BY: WH
CHK. BY: LFS
DRAWING NO.: TX-4038
SHEET 10 of 10