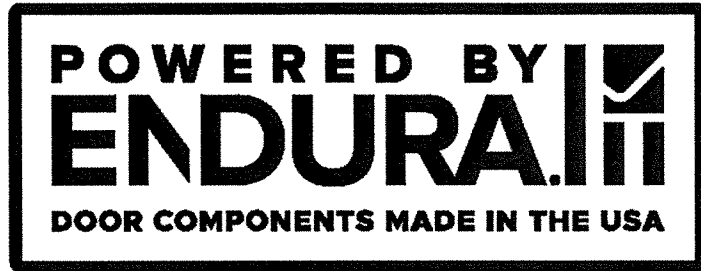


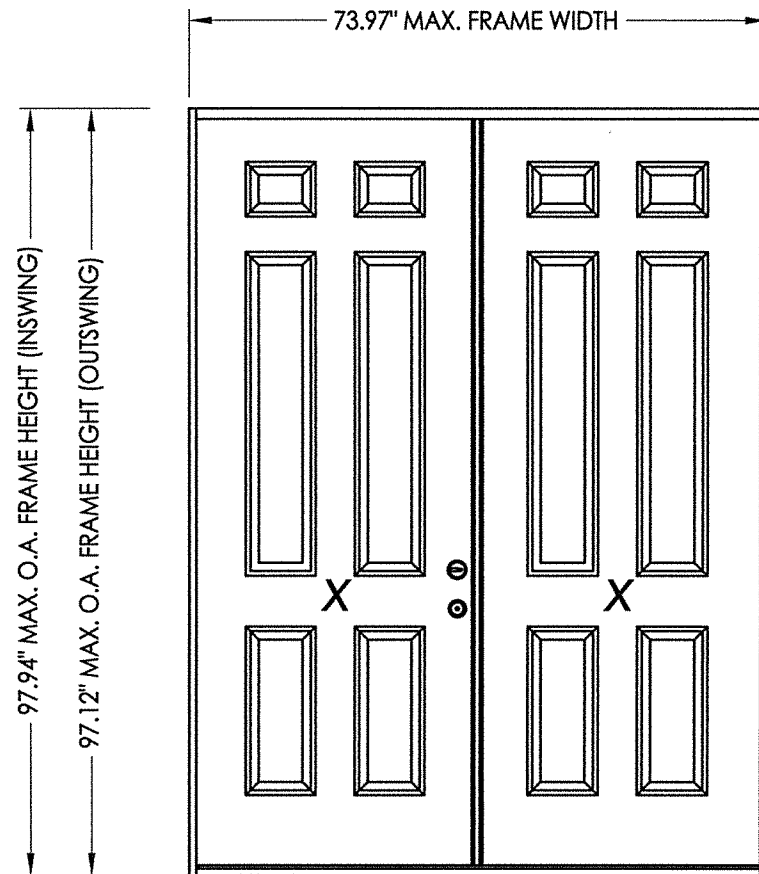
Z:\Clients\Endura PERMANENTB - Texas Dept of Ins\TDI - DR-XXXX Opaque Masonite FG Door XX - IMPACTC - Drawings\TX-5257.dwg



# Ultimate Flip Lever Astragal in a Double Door IN SWING / OUT SWING "IMPACT"



Ultimate Flip Lever Astragal



**EVALUATED FOR USE IN THE STATE OF TEXAS**

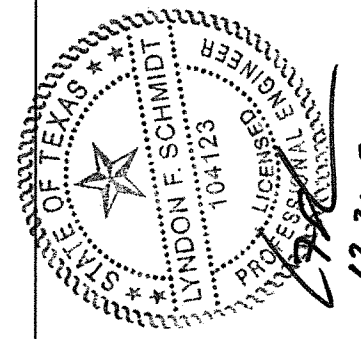
The Fiberglass Door system described herein complies with the 2018 International Residential Code (IRC), Sections R301 & R609 and the 2018 International Building Code (IBC), Sections 1404.13, 1609, 1709.5, 2403 and 2404 subject to the following conditions:

1. Anchors shall be as listed and spaced as shown in the details. Anchor embedment to base material shall be beyond wall dressing or stucco.
2. This system has been tested and evaluated as a large missile impact protective system for installation in areas that require wind borne debris protection. This product meets missile level "D" as defined in ASTM E 1996.
3. Allowable design pressure requirements must be equal to or less than the design pressure rating shown in the design pressure chart, sheet 1 of this drawing.
4. Conditions not covered by this drawing are subject to further engineering analysis.

**TABLE OF CONTENTS**

SHEET #	DESCRIPTION
1	Typical Sections, Design Pressures & General Notes
2	Door Panel Details
3	Vertical Cross Sections
4	Horizontal Cross Sections
5	Frame Anchoring
6	Bill of Materials & Components

ULTIMATE FLIP LEVER ASTRAGAL by ENDURA				
	MAXIMUM FRAME SIZE	DESIGN PRESSURE RATING (PSF)		
		POSITIVE	NEGATIVE	
MASONITE Opaque (FIBERGLASS)	IN SWING	73.97" X 97.94"	+45.0	-50.0
	OUT SWING	73.97" X 97.12"	+50.0	-50.0



Documents Prepared By: Lyndon F. Schmidt, P.E.  
TEXAS P.E. #104123

**RW** BUILDING CONSULTANTS, INC.  
P.O. Box 230 Valrico FL 33595  
Phone No.: 813.659.9197  
TEXAS BOARD OF PROFESSIONAL ENGINEERS  
CERTIFICATE OF REGISTRATION # F-11852

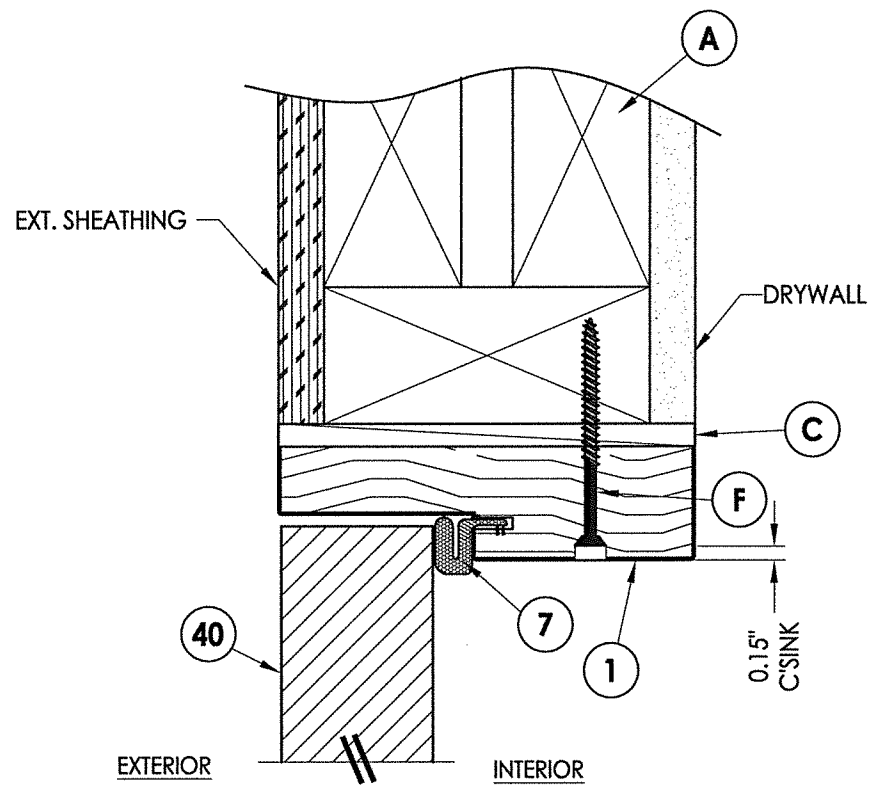
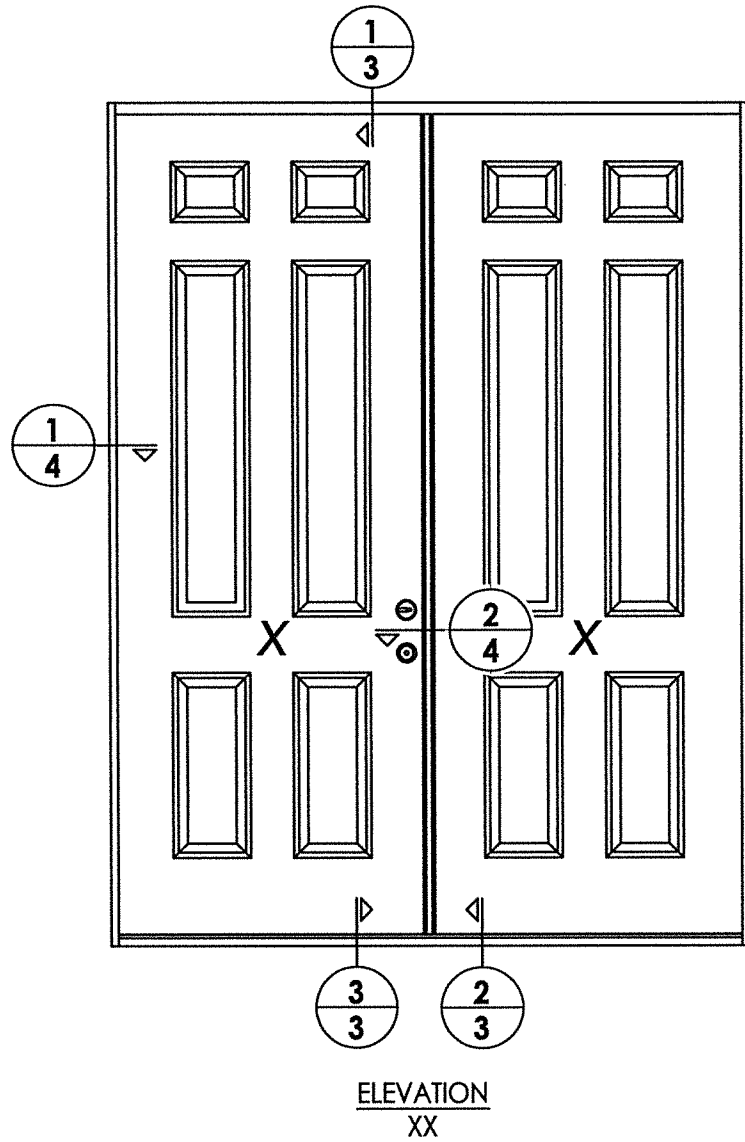
PRODUCT: ENDURA  
PART OR ASSEMBLY:  
TYPICAL SECTIONS, DESIGN PRESSURES & GENERAL NOTES

NO.	DATE	BY	REVISIONS

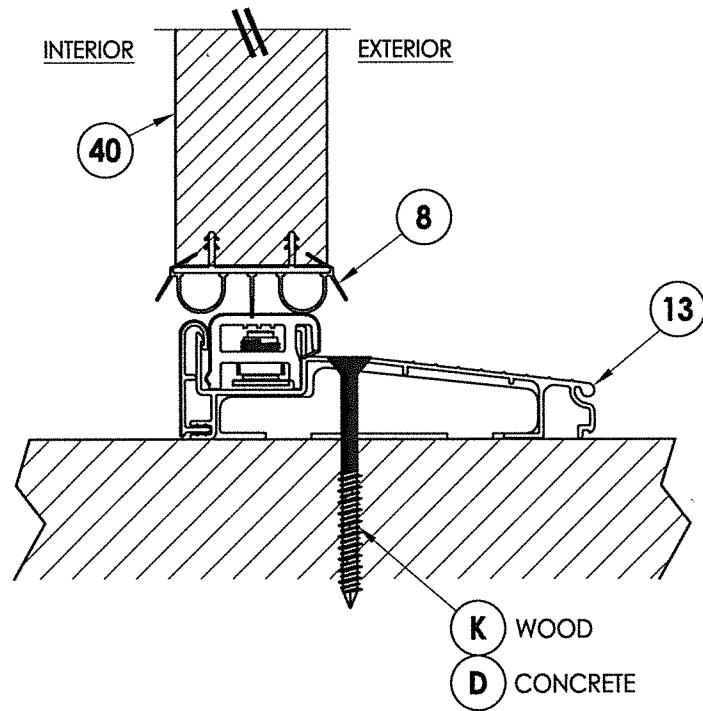
DATE: 12/16/21  
SCALE: N.T.S.  
DWG. BY: RW  
CHK. BY: LFS  
DRAWING NO.: TX-5257  
SHEET 1 OF 6



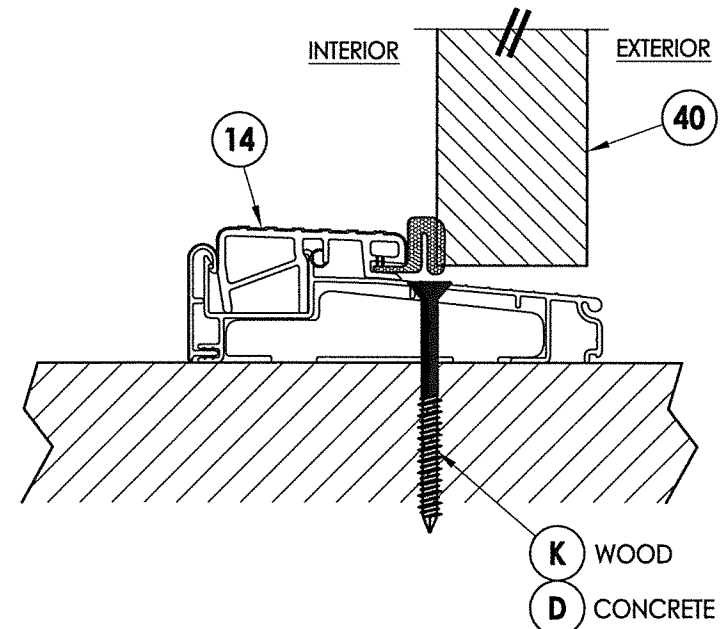
Z:\Clients\Endura PERMANENT\B - Texas Dept of Ins\TDI - DR-XXXX Opaque Masonite FG Door XX - IMPACT\C - Drawings\TX-5257.dwg



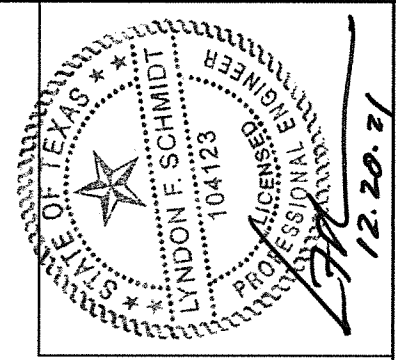
**1** VERTICAL CROSS SECTION  
**3** Outswing shown (Inswing similar)



**2** VERTICAL CROSS SECTION  
**3** Inswing sill



**3** VERTICAL CROSS SECTION  
**3** Outswing sill



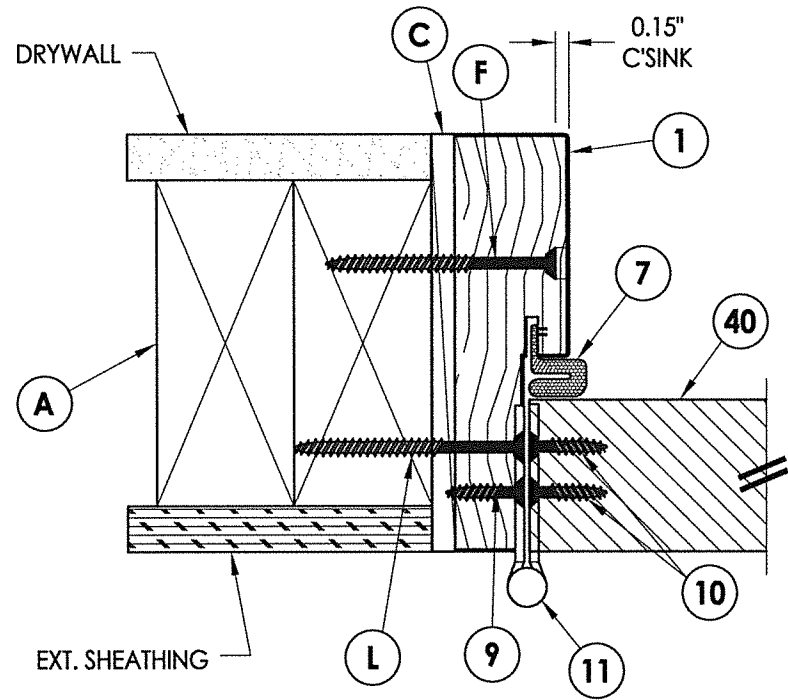
Documents Prepared By: Lyndon F. Schmidt, P.E.  
TEXAS P.E. #104123

**RW** BUILDING CONSULTANTS, INC.  
P.O. Box 230 Valrico FL 33595  
Phone No.: 813.659.9197  
TEXAS BOARD OF PROFESSIONAL ENGINEERS  
CERTIFICATE OF REGISTRATION # F-11852

PRODUCT:	ENDURA
PART OR ASSEMBLY:	VERTICAL CROSS SECTIONS

NO.	DATE	BY	REVISIONS

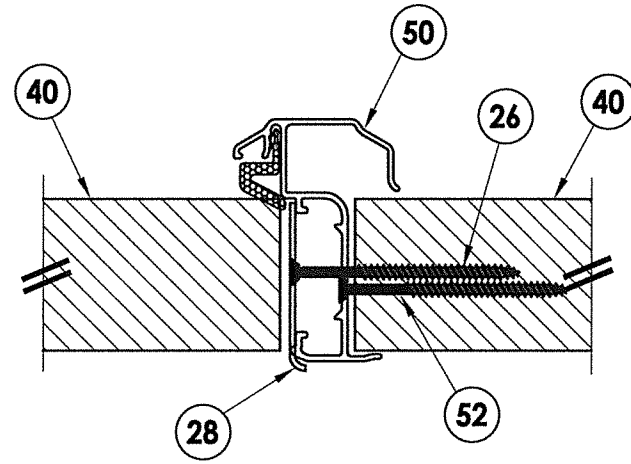
DATE: 12/16/21  
SCALE: N.T.S.  
DWG. BY: RW  
CHK. BY: LFS  
DRAWING NO.: TX-5257  
SHEET 3 OF 6



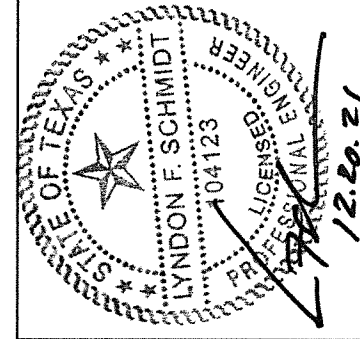
**1** HORIZONTAL CROSS SECTION  
**4** Outswing shown (Inswing similar)

INTERIOR

EXTERIOR



**2** HORIZONTAL CROSS SECTION  
**4** Outswing shown (Inswing similar)



Documents Prepared By: Lyndon F. Schmidt, P.E.  
 TEXAS P.E. #104123

**RW** BUILDING CONSULTANTS, INC.  
 P.O. Box 230 Valrico FL 33595  
 Phone No.: 813.659.9197

TEXAS BOARD OF PROFESSIONAL ENGINEERS  
 CERTIFICATE OF REGISTRATION # F-11852

PRODUCT: ENDURA

PART OR ASSEMBLY: HORIZONTAL CROSS SECTIONS

NO.	DATE	BY	REVISIONS

DATE: 12/16/21

SCALE: N.T.S.

DWG. BY: RW

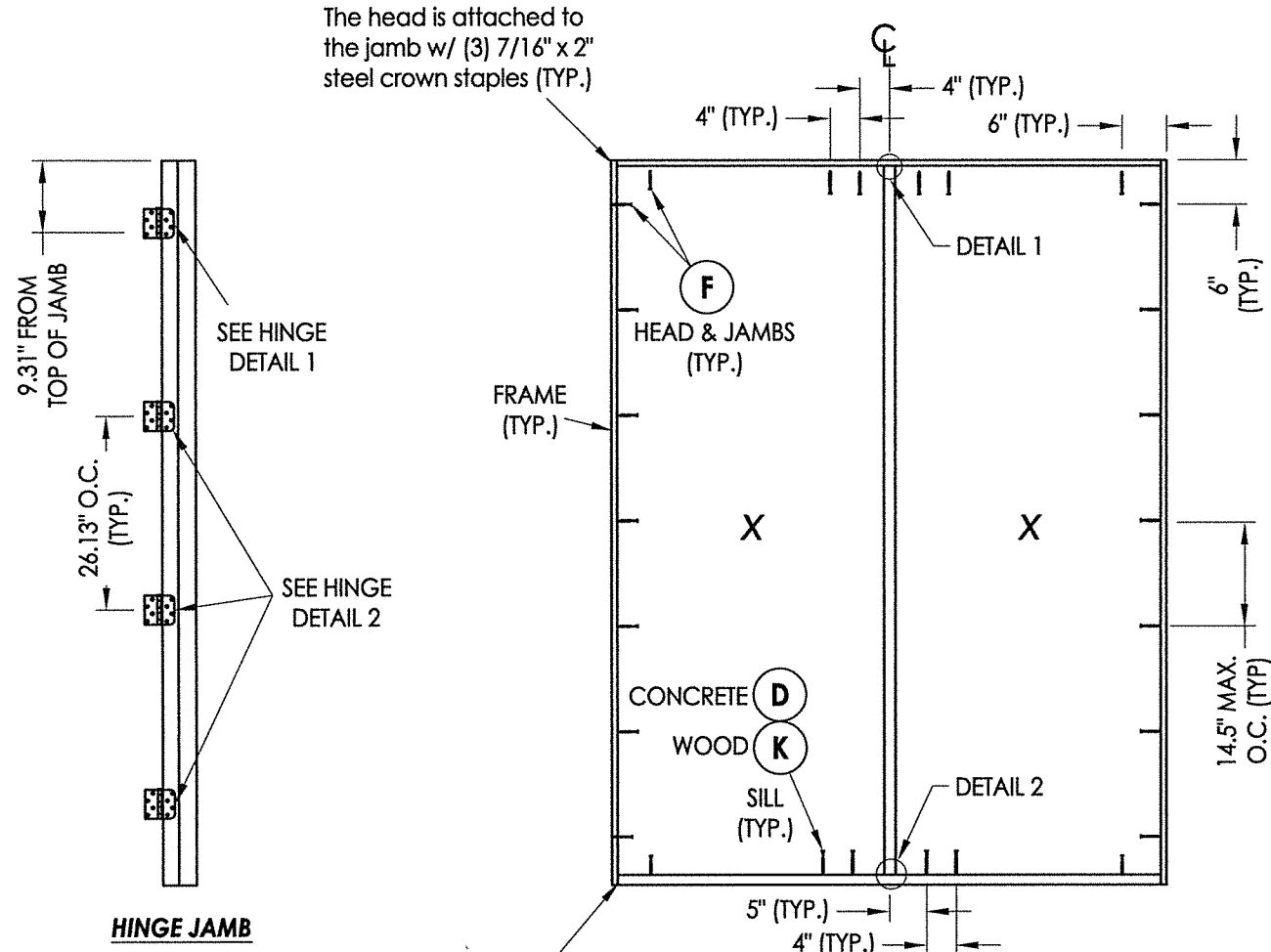
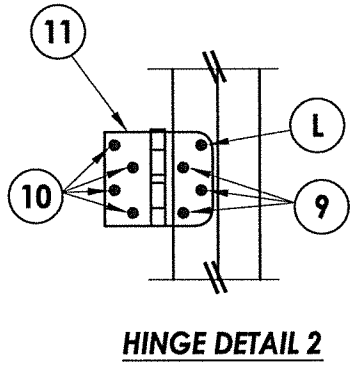
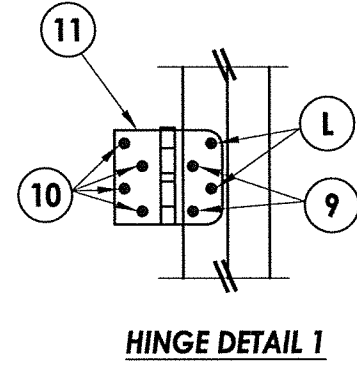
CHK. BY: LFS

DRAWING NO.:

TX-5257

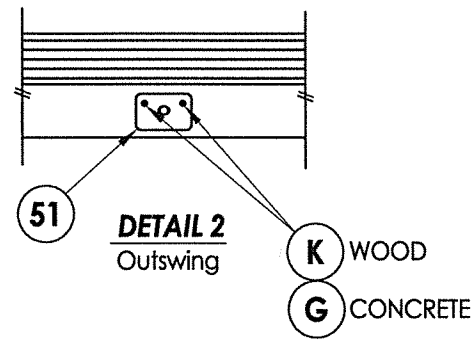
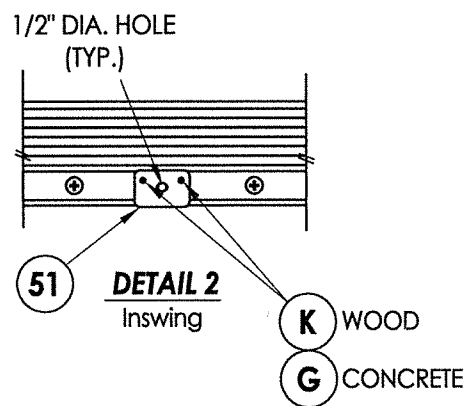
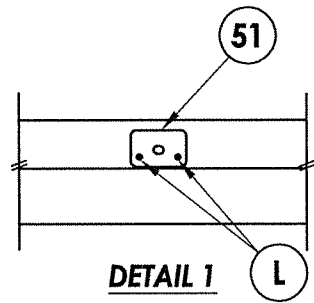
SHEET 4 OF 6

Z:\Clients\Endura PERMANENT\B - Texas Dept of Ins\TDI - DR-XXXX Opaque Masonite FG Door XX - IMPACT\C - Drawings\TX-5257.dwg

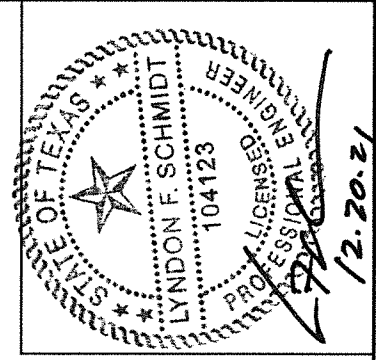
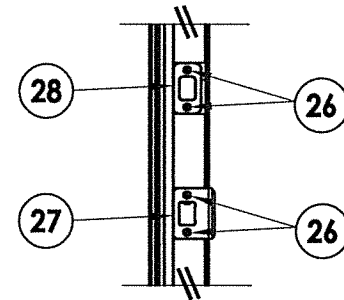


The threshold is attached to the jamb w/ (3) 7/16" x 2" steel crown staples & (1) #8 x 1-5/8" wood screw (TYP.)

**FRAME ANCHORING**



**LATCH & DEADBOLT STRIKE PLATE DETAILS**



Documents Prepared By: Lyndon F. Schmidt, P.E.  
TEXAS P.E. #104123

**RW** BUILDING CONSULTANTS, INC.  
P.O. Box 230 Valrico FL 33595  
Phone No.: 813.659.9197

TEXAS BOARD OF PROFESSIONAL ENGINEERS  
CERTIFICATE OF REGISTRATION # F-11852

PRODUCT: ENDURA

PART OR ASSEMBLY: FRAME ANCHORING

NO.	DATE	BY	REVISIONS

DATE: 12/16/21

SCALE: N.T.S.

DWG. BY: RW

CHK. BY: LFS

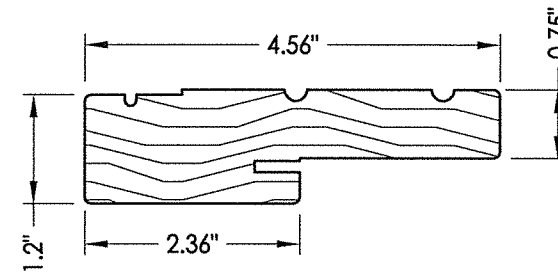
DRAWING NO.: TX-5257

SHEET 5 OF 6

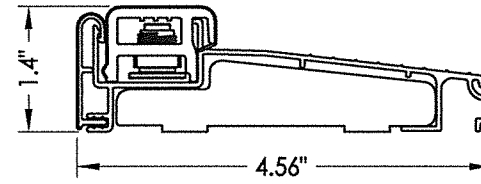
Z:\Clients\Endura PERMANENT B - Texas Dept of Ins\TDI - DR-XXXX Opaque Masonite FG Door XX - IMPACTYC - Drawings\TX-5257.dwg

**BILL OF MATERIALS**

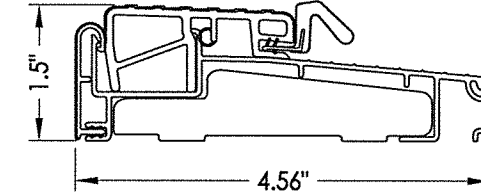
ITEM #	DESCRIPTION	MATERIAL
A	2X FRAMING (SG >= 0.42)	WOOD
C	1/4" MAX. SHIM SPACE	-
D	1/4" PFH DeWALT OR ITW CONCRETE SCREW (1-3/4" MIN. EMBEDMENT)	STEEL
F	#10 X 2-1/2" PFH WOOD SCREW (1.15" MIN. EMBEDMENT)	STEEL
G	3/16" PFH ITW CONCRETE SCREW (1-3/4" MIN. EMBEDMENT)	STEEL
K	#10 FH WOOD SCREW (1-3/4" MIN. EMBEDMENT)	STEEL
L	#10 X 2-1/2" PFH WOOD SCREW (1.5" MIN. EMBEDMENT)	STEEL
1	FINGER JOINTED PINE JAMB	WOOD
7	WEATHERSTRIP	FOAM
8	SWEEP	PVC
9	#9 X 3/4" PFH WOOD SCREW	STEEL
10	#9 X 1" PFH WOOD SCREW	STEEL
11	4" X 4" BUTT HINGE	STEEL
13	INSWING THRESHOLD	ALUM/COMP
14	OUTSWING THRESHOLD	ALUM/COMP
26	#8 X 2-1/2" PFH WOOD SCREW	STEEL
27	LATCH STRIKE PLATE	STEEL
28	DEADBOLT STRIKE PLATE	STEEL
40	DOOR PANEL - SEE DOOR PANEL DETAIL SHEET FOR CONSTRUCTION DETAILS	-
50	ENDURA ULTIMATE FLIP LEVER ASTRAGAL	ALUM
51	ASTRAGAL BOLT STRIKE PLATE	STEEL
52	#8 X 3" FH WOOD SCREW	STEEL



1 WOOD JAMB



13 INSWING ADJUSTABLE THRESHOLD  
ZAIL4565



14 OUTSWING THRESHOLD  
ZOBL4565

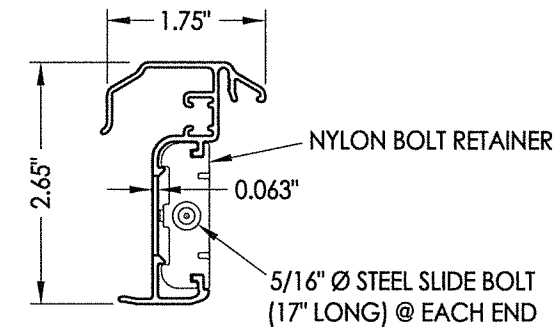
**CONCRETE ANCHOR NOTES:**

- Concrete anchor locations at the corners may be adjusted to maintain the min. edge distance to mortar joints.
- Concrete anchor locations noted as "MAX. ON CENTER" must be adjusted to maintain the min. edge distance to mortar joints, additional concrete anchors may be required to ensure the "MAX. ON CENTER" dimension are not exceeded.
- Concrete anchor table:

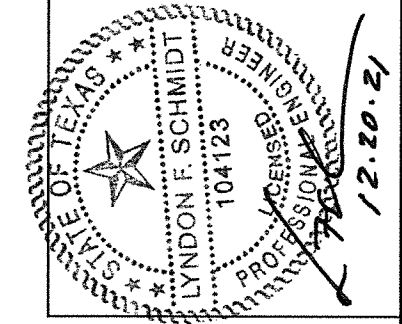
ANCHOR TYPE	ANCHOR SIZE	MIN. EMBEDMENT	MIN. CLEARANCE TO MASONRY EDGE	MIN. CLEARANCE TO ADJACENT ANCHOR
ITW BUILDEX TAPCON®	3/16"	1-3/4"	3"	1-1/2"
	1/4"	1-3/4"	2"	4"
DeWALT ULTRACON®	1/4"	1-3/4"	1"	4"

**WOOD SCREW INSTALLATION NOTES:**

- Maintain a minimum 5/8" edge distance, 1" end distance, & 1" o.c. spacing of wood screws to prevent the splitting of wood.



50 ENDURA ULTIMATE FLIP LEVER ASTRAGAL



Documents Prepared By: Lyndon F. Schmidt, P.E.  
TEXAS P.E. #104123

**RW** BUILDING CONSULTANTS, INC.  
P.O. Box 230 Valrico FL 33595  
Phone No.: 813.659.9197

TEXAS BOARD OF PROFESSIONAL ENGINEERS  
CERTIFICATE OF REGISTRATION # F-11852

PRODUCT:	ENDURA
PART OR ASSEMBLY:	BILL OF MATERIALS & COMPONENTS

NO.	DATE	BY	REVISIONS

DATE:	12/16/21
SCALE:	N.T.S.
DWG. BY:	RW
CHK. BY:	LFS
DRAWING NO.:	TX-5257
SHEET	6 OF 6