

GENERAL NOTES:

1. THIS PRODUCT HAS BEEN TESTED, ANALYZED & APPROVED FOR DESIGN PRESSURES NOT TO EXCEED THOSE SHOWN IN THE "ALLOWABLE DESIGN PRESSURE TABLE(S)".
2. OPENINGS, BUCKING & BUCKING FASTENERS MUST BE PROPERLY DESIGNED & INSTALLED TO TRANSFER WIND LOADS TO THE STRUCTURE.
3. ALL HARDWARE & FASTENERS SHALL BE IN ACCORDANCE WITH THESE DRAWINGS & SHALL NOT VARY UNLESS SPECIFICALLY MENTIONED ON THE DRAWINGS. SPECIFIED ANCHOR EMBED TO BASE MATERIAL SHALL BE BEYOND WALL FINISH OR STUCCO.
4. THE DETAILS & SPECIFICATIONS SHOWN HEREIN REPRESENT THE PRODUCTS TESTED & PROPOSED FOR IMPACT, CYCLIC & UNIFORM STATIC AIR PRESSURE TESTING IN CONFORMANCE WITH 2018 IBC REFERENCED STANDARDS ASTM E330, E1886 & E1996 FOR LARGE MISSILE IMPACT PRODUCTS. ALL TESTING OF THIS PRODUCT TO STANDARDS LESS CURRENT THAN THOSE SPECIFIED IN THE 2018 IBC HAS BEEN DETERMINED EQUIVALENT TO THE MORE CURRENT VERSIONS OF THOSE STANDARDS REFERENCED IN THE 2018 IBC
5. THIS PRODUCT HAS BEEN DESIGNED IN ACCORDANCE WITH AND MEETS THE REQUIREMENTS OF THE 2018 INTERNATIONAL BUILDING CODE (IBC).
6. IMPACT SHUTTERS ARE NOT REQUIRED WITH THIS PRODUCT.
7. ALL ANCHORS SECURING PRODUCT FRAMES TO PRESSURE TREATED BUCKS OR WOOD FRAMING SHALL BE CAPABLE OF RESISTING CORROSION CAUSED BY THE PRESSURE TREATING CHEMICALS IN THE WOOD.
8. DETERMINE THE POSITIVE & NEGATIVE DESIGN LOADS TO USE WHEN REFERENCING THESE DOCUMENTS IN ACCORDANCE WITH THE GOVERNING CODE AND GOVERNING WIND VELOCITY. FOR WIND LOAD CALCULATIONS IN ACCORDANCE WITH THE INTERNATIONAL BUILDING CODE, A DIRECTIONALITY FACTOR OF $KD = 0.85$ MAY BE APPLIED PER THE ASCE-7 STANDARD.
9. MATERIALS, INCLUDING BUT NOT LIMITED TO STEEL SCREWS, THAT COME INTO CONTACT WITH OTHER DISSIMILAR MATERIALS SHALL BE SEPARATED OR COATED AS REQUIRED TO AVOID CORROSION OF EITHER MATERIAL.
10. TO THE BEST OF OUR KNOWLEDGE, THE PRODUCT SHOWN HEREIN ARE QUALITY ASSURED BY AN APPROVED CERTIFICATION/QA ENTITY & SHALL BE LABELED IN ACCORDANCE WITH APPLICABLE STANDARDS. THESE DRAWINGS SHOW ALL APPLICABLE ELEVATION, COMBINATION, INSTALLATION & COMPARATIVE ANALYSIS CONDITIONS AS DETERMINED THROUGH TESTING & ENGINEERING RATIONAL ANALYSIS. PRODUCT ASSEMBLY SHALL BE IN ACCORDANCE WITH THESE DRAWINGS, THE MANUFACTURER'S QUALITY ASSURANCE SPECIFICATIONS & TESTING REPORTS.
11. CERTIFICATION OF THIS PRODUCT SHALL BE CONSIDERED VOID IF THEY ARE INSTALLED WITHOUT A BUILDING PERMIT FROM THE APPLICABLE LOCAL BUILDING DEPARTMENT OR IF THEY ARE INSTALLED BY ANYONE OTHER THAN A LICENSED CONTRACTOR EXPERIENCED WITH INSTALLATIONS OF THIS TYPE OF PRODUCT.

EVALUATION OF THIS PRODUCT IS BASED ON APPLICABLE STANDARDS AND/OR INFORMATION & RESULTS FROM APPLICABLE TEST REPORTS. THE BUILDING CODE VERSION CONSIDERED WITH THIS EVALUATION WAS THAT IN FORCE AT THE TIME OF THE EVALUATION. IN THE EVENT OF CODE VERSION CHANGES/UPDATES OR IN THE EVENT THAT NEW OR ADDITIONAL TESTING IS COMPLETED ON THIS PRODUCT, PRIOR TO STATING CODE COMPLIANCE, THE MANUFACTURER SHALL CONFIRM WITH THE EVALUATION ENGINEER OF RECORD THAT EVERYTHING SPECIFIED HERE-IN IS CURRENT WITH ALL CURRENT TESTING, CODES AND APPLICABLE STANDARDS.

NOTE: THESE DOOR UNITS ARE NOT APPROVED FOR USE WHERE WATER INFILTRATION RESISTANCE IS REQUIRED BY THE DOOR UNLESS THE UNITS ARE INSTALLED IN NON-HABITABLE AREAS WHERE THE UNIT & THE AREA ARE DESIGNED TO ACCEPT WATER INFILTRATION OR THE UNITS ARE INSTALLED AT LOCATIONS PROTECTED BY A CANOPY OR OVERHANG WHERE-BY THE OVERHANG(OH) RATIO IS EQUAL TO OR MORE THAN 1.0 PER FBC.

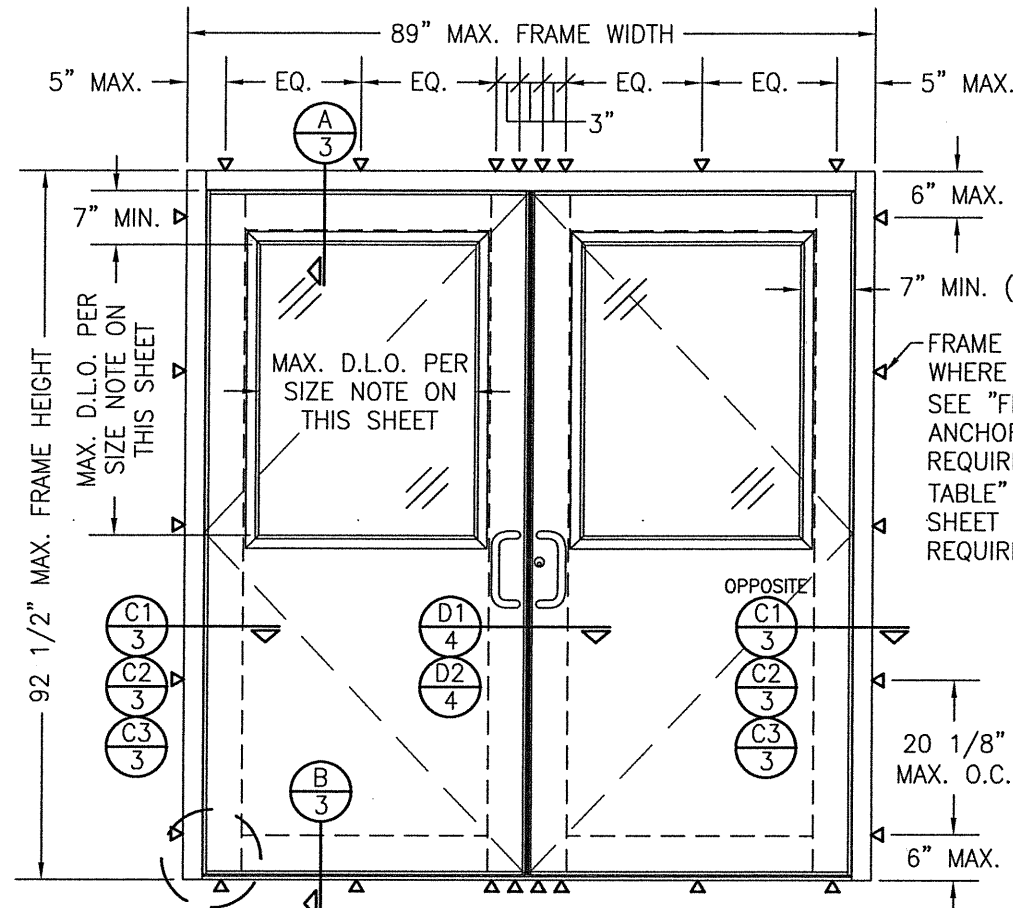
TO AVOID CONFUSION, LOCK & HINGE CONDITIONS ARE NOT CALLED OUT/SPECIFIED IN THE ELEVATIONS. SEE PRESSURE TABLE ON THIS SHEET & PARTS LIST ON SHEET 7 FOR ALL LOCK & HINGE OPTIONS.

FRAME ANCHOR REQUIREMENTS TABLE

FRAME SCREWS

OPENING TYPE (SUBSTRATE)	FRAME TO OPENING FASTENER TYPE	MINIMUM EMBED	MINIMUM EDGE DIST.
(2) MIN. 2X6 WOOD FRAME OR BUCK (MIN. GR. 3 & G=0.55)	NO. 12 SMS OR WOOD SCREW	1 1/4"	7/8"
MIN. 18 GA. 33 KSI METAL STUD	NO. 12 GR. 5 SELF TAP/DRILL SCREW	FULL	1/2"
MIN. 1/8" THK A36 STEEL	NO. 12 GR. 5 SELF TAP/DRILL SCREW	FULL	1/2"
MIN. 0.1" THK 6063-T5 ALUM.	NO. 12 GR. 5 SELF TAP/DRILL SCREW	FULL	1/2"
MIN. C-90 CONCRETE FILLED CMU OR SOLID 2500 PSI CONCRETE	(1) 1/4" CONCRETE SCREW	1 3/4"	2"

- (1) CONCRETE SCREWS SHALL BE ELCO ULTRACONS (C.S.), ELCO CRETE-FLEX (S.S.), ITW RAMSET/RED HEAD TAPCONS (C.S. OR S.S.) OR HILTI KWIK-CON II (C.S OR S.S.).
 (2) 2X6 BUCKS SHALL BE OF A MINIMUM DEPTH REQUIRED TO MEET ANCHOR EDGE DISTANCE REQUIREMENTS BUT NO LESS THAN 4 1/2".

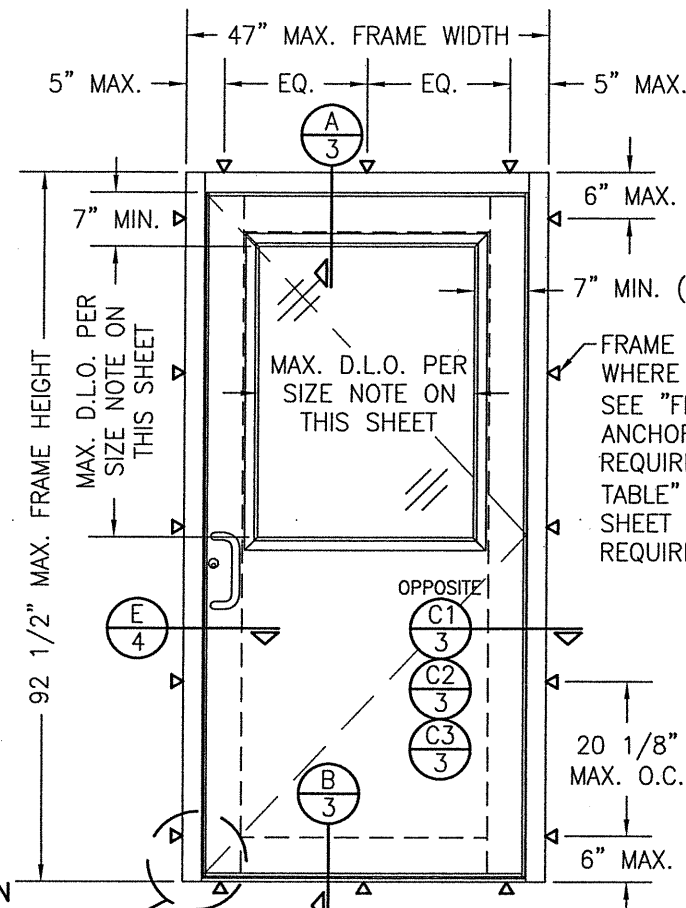


**EXTERIOR ELEVATION:
DOUBLE RECTANGULAR DOOR**

SCALE: 1/2" = 1'-0"

SEE CORNER CONSTRUCTION DESCRIPTIONS ON THIS SHEET

SEE CORNER CONSTRUCTION DESCRIPTIONS ON THIS SHEET



**EXTERIOR ELEVATION:
SINGLE RECTANGULAR DOOR**

SCALE: 1/2" = 1'-0"

DOOR GLASS D.L.O. SIZE NOTE: DIMENSIONS OF THE DOOR PANEL D.L.O. SHALL BE SUCH THAT THE OVERALL D.L.O. AREA DOES NOT EXCEED 7.36 SQ. FT. (1060 SQ. IN.)

ALLOWABLE DESIGN PRESSURE (INDIVIDUAL & TRANSOM UNITS)

LOCK CONDITION	ALLOWABLE DESIGN PRESSURE (DP)	WIND ZONE RATING
DOUBLE DOORS		
1	+/-70 PSF	4
2	+/-70 PSF	4
3	+/-50 PSF	3
SINGLE DOORS		
1	+/-70 PSF	4
2	+/-70 PSF	4
3	+/-70 PSF	3
4	(1) +/-75 PSF	4

1) ONLY A CONTINUOUS GEAR HINGE IS APPLICABLE FOR USE WHEN DP EXCEEDS +/-70 PSF.

LOCK CONDITION 1:

3-POINT LOCK ITEM #39 AT SINGLE DOOR AND ACTIVE PANEL OF DOUBLE DOOR; TOP & BOTTOM FLUSH BOLTS ITEM #40 & 41 AT INACTIVE PANEL OF DOUBLE DOOR.

LOCK CONDITION 2:

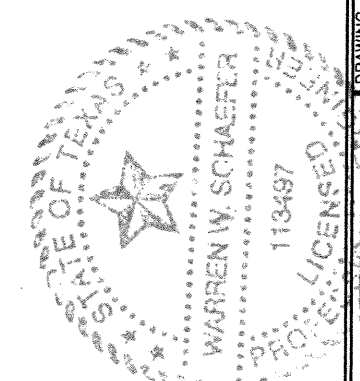
KAWNEER 1686 EXIT DEVICE ITEM #42 AT EACH PANEL (SINGLE & DOUBLE DOORS)

LOCK CONDITION 3:

CORBIN RUSWIN EXIT DEVICE ITEM #43 AT EACH PANEL (SINGLE & DOUBLE DOORS) WITH REMOVABLE MULLION AT DOUBLE DOORS.

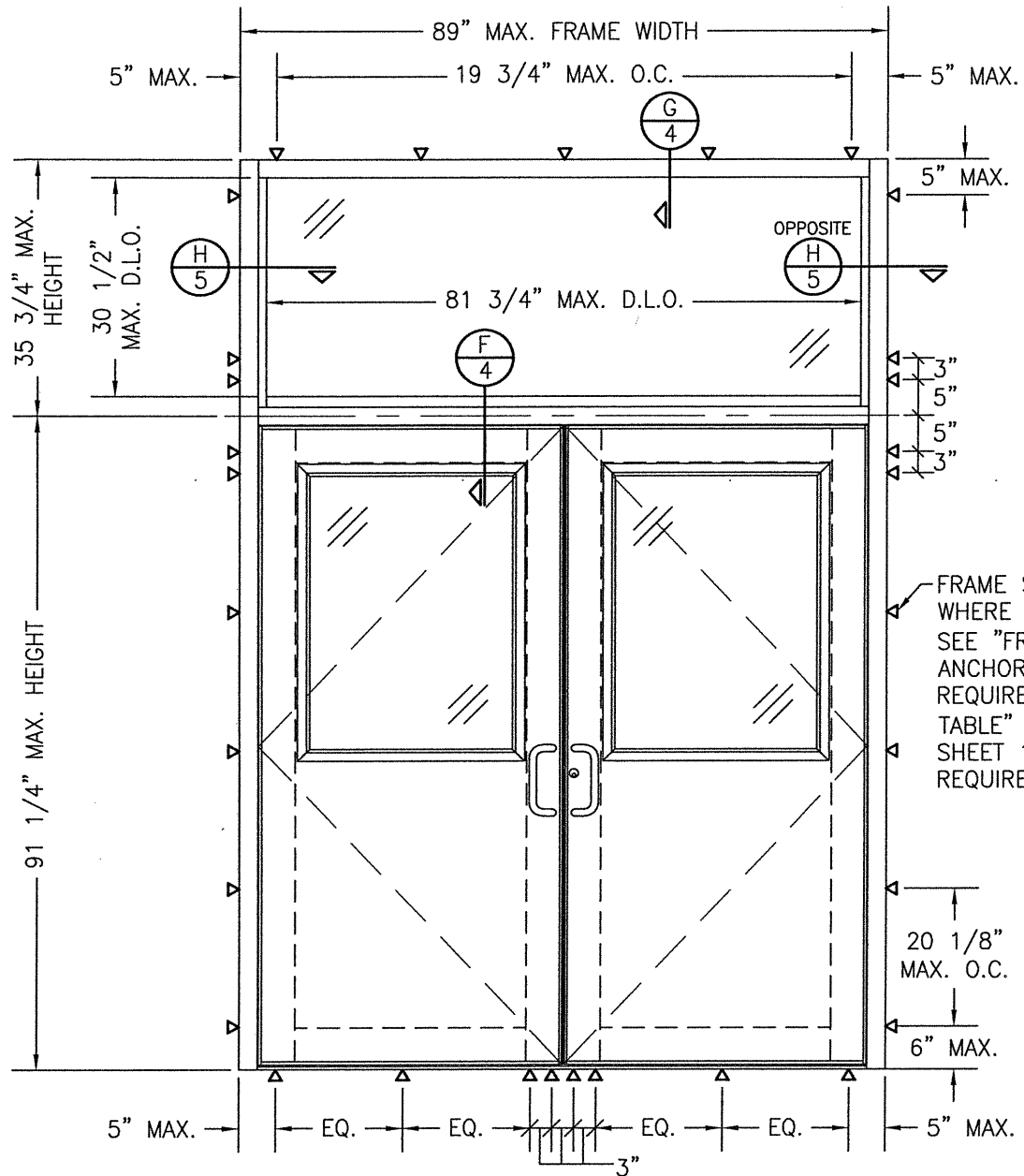
LOCK CONDITION 4:

SCHLAGE MORTISE LOCK ITEM #44 (SINGLE DOORS ONLY)



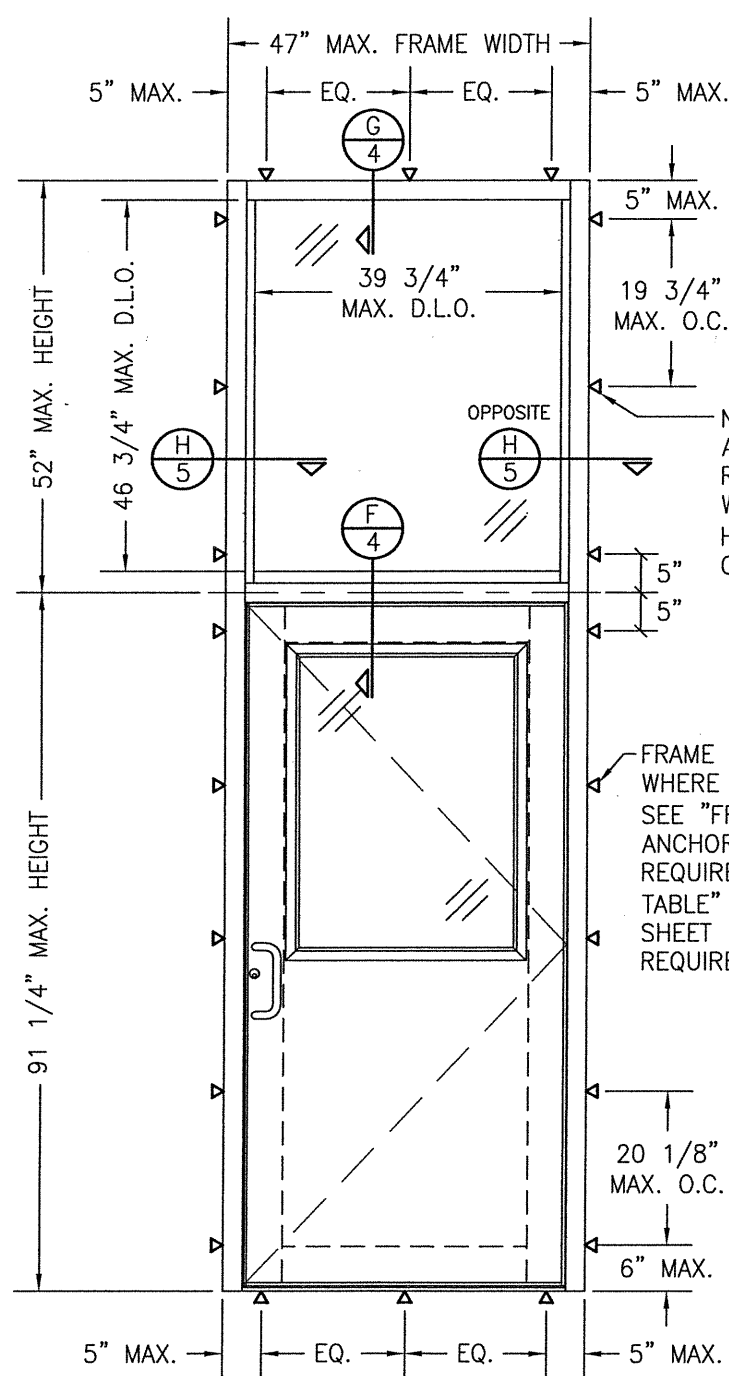
DRAWN BY: W.W.S.	CHECKED BY: W.W.S.	PLOT: 1=24	DATE: 03/04/21
NO.	REVISION DESCRIPTION	BY	DATE
DRAWING TITLE: FLUSHLINE IMPACT DOORS WITH IR501 FRAMES			
JOB INFORMATION: KAWNEER COMPANY, INC. 555 GUTHRIE COURT NORCROSS, GA 30092 770-449-5555			
CONSULTANTS: W. W. SCHAEFER ENGINEERING & CONSULTING, P.A. (REG. NO. F-14980) 7480 150TH COURT NORTH PALM BEACH GARDENS, FL 33418 PHONE: 561-744-3424			
CERTIFICATION: MAR 04 2021		WARREN W. SCHAEFER, P.E. P.E. NO. 113497	
DRAWING NO. 1913T		REV.	
SHEET NO. 1		OF 7	

THESE DRAWINGS ARE APPLICABLE ONLY TO THE PRODUCT SPECIFIED. THEY MAY NOT BE USED FOR THE ASSEMBLY AND/OR INSTALLATION OF ANY OTHER PRODUCT NOR MAY THEY BE USED FOR RATIONAL AND/OR LOCAL APPROVAL OF ANY PRODUCT NOT PRODUCED BY THE MANUFACTURER STATED ON THESE DRAWINGS.



**EXTERIOR ELEVATION:
DOUBLE DOOR WITH TRANSOM**
SCALE: 1/2" = 1'-0"

(FOR ALL DETAIL NOT SHOWN, SEE DOUBLE DOOR ELEVATION ON SHEET 1)



**EXTERIOR ELEVATION:
SINGLE DOOR WITH TRANSOM**
SCALE: 1/2" = 1'-0"

(FOR ALL DETAIL NOT SHOWN, SEE SINGLE DOOR ELEVATION ON SHEET 1)

NO INTERMEDIATE ANCHORS ARE REQUIRED AT SIDES WHEN TRANSOM HEIGHT IS 35 3/4" OR LESS.

FRAME SCREWS WHERE SHOWN. SEE "FRAME ANCHOR REQUIREMENTS TABLE" ON SHEET 1 FOR REQUIREMENTS.

FRAME SCREWS WHERE SHOWN. SEE "FRAME ANCHOR REQUIREMENTS TABLE" ON SHEET 1 FOR REQUIREMENTS.

CORNER CONSTRUCTION:

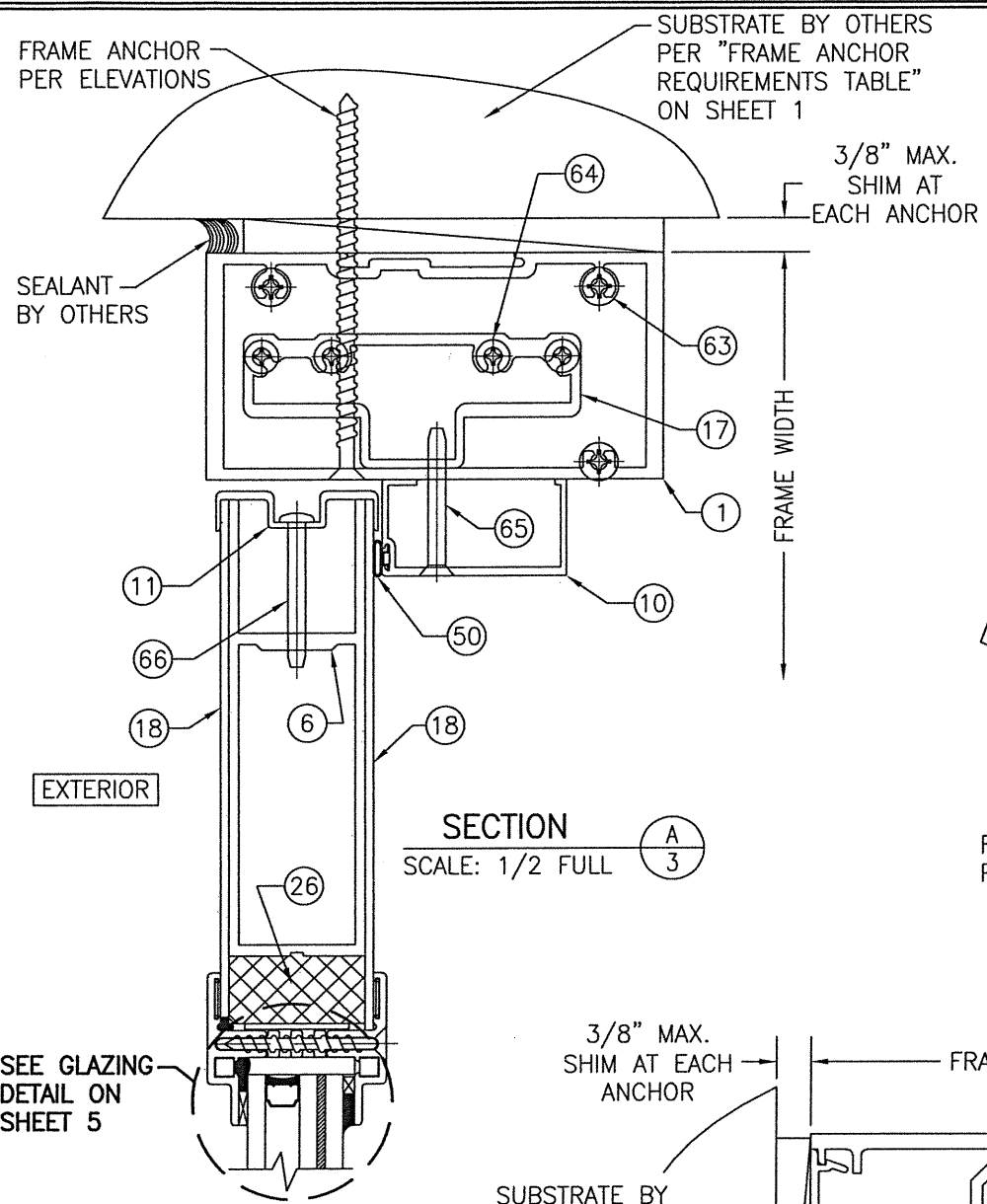
TRANSOM FRAME HEAD CORNER: VERTICAL FRAME MEMBERS RUN THROUGH WHILE THE HORIZONTAL FRAME MEMBER IS SQUARE CUT, BUTTED AND MECHANICALLY FASTENED WITH 3 NO. 12 X 1" PHTF THROUGH THE VERTICAL MEMBERS INTO THE HORIZONTAL MEMBER SCREW SPLINES. CORNERS ARE SEALED WITH DOW 795 SILICONE SEALANT.

DOOR HEAD FRAME ENDS/CORNER: VERTICAL FRAME MEMBERS RUN THROUGH WHILE THE HORIZONTAL DOOR HEAD MEMBER IS SQUARE CUT, BUTTED AND MECHANICALLY FASTENED TO THE VERTICAL MEMBERS VIA 3 NO. 12 X 1" PHTF THROUGH THE VERTICAL MEMBERS INTO THE HORIZONTAL MEMBER SCREW SPLINES AND A SHEAR BLOCK (ITEM #17). THE SHEAR BLOCK IS MECHANICALLY FASTENED TO THE VERTICAL FRAME MEMBER WITH 4 NO. 10 X 1 19/32" PHTF SCREWS. CORNERS ARE SEALED WITH DOW 795 SILICONE SEALANT.

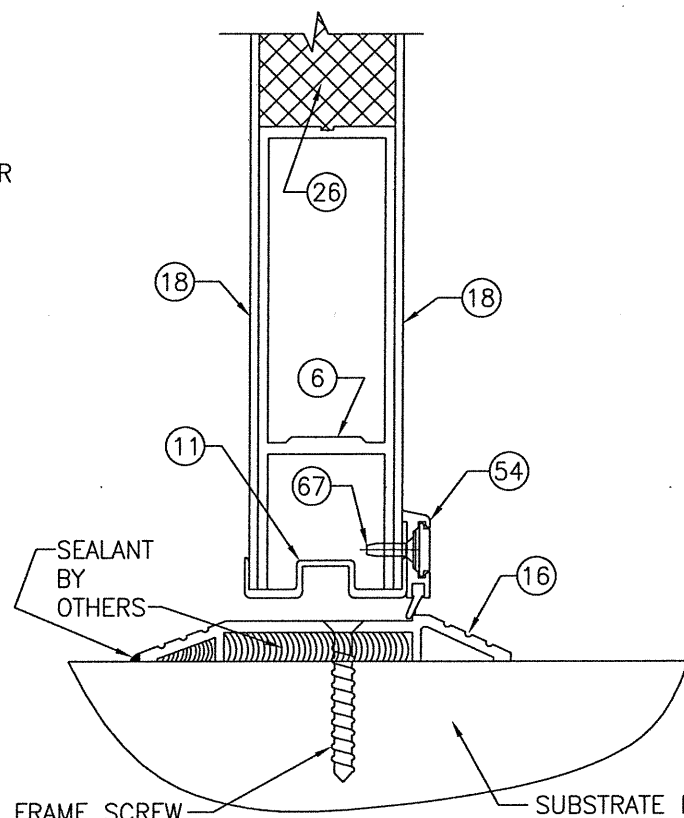
FRAME SILL CORNER: VERTICAL FRAME MEMBERS RUN THROUGH WHILE THE SILL MEMBER IS SQUARE CUT, BUTTED TO THE VERTICAL FRAME MEMBERS & SECURED TO EACH FRAME MEMBER WITH AN ANGLE CLIP ITEM #24. THE ANGLE CLIP IS SCREWED TO THE SILL & FRAME MEMBERS WITH NO. 12 -24 X 3/8" FHMS SCREWS (2 AT SILL; 3 AT FRAME). CORNERS ARE SEALED WITH DOW 795 SILICONE SEALANT.

DOOR PANEL CORNER: VERTICAL STILES RUN THROUGH AND ARE SECURED TO THE RAILS AT THE TOP & BOTTOM WITH A WELD CLIP ITEM #25. EACH WELD CLIP IS FASTENED TO THE STILE & RAIL WITH TWO(2) 1/4-20 X 3/4" PHMS & 3/16" THICK STEEL NUT PLATES. THE INTERSECTION OF EACH CORNER JOINT IS WELDED WITH A 1/2" DIA. PLUG WELD AND A 1 1/8" LONG FILLET WELD AT BOTH WEBS OF THE RAIL.

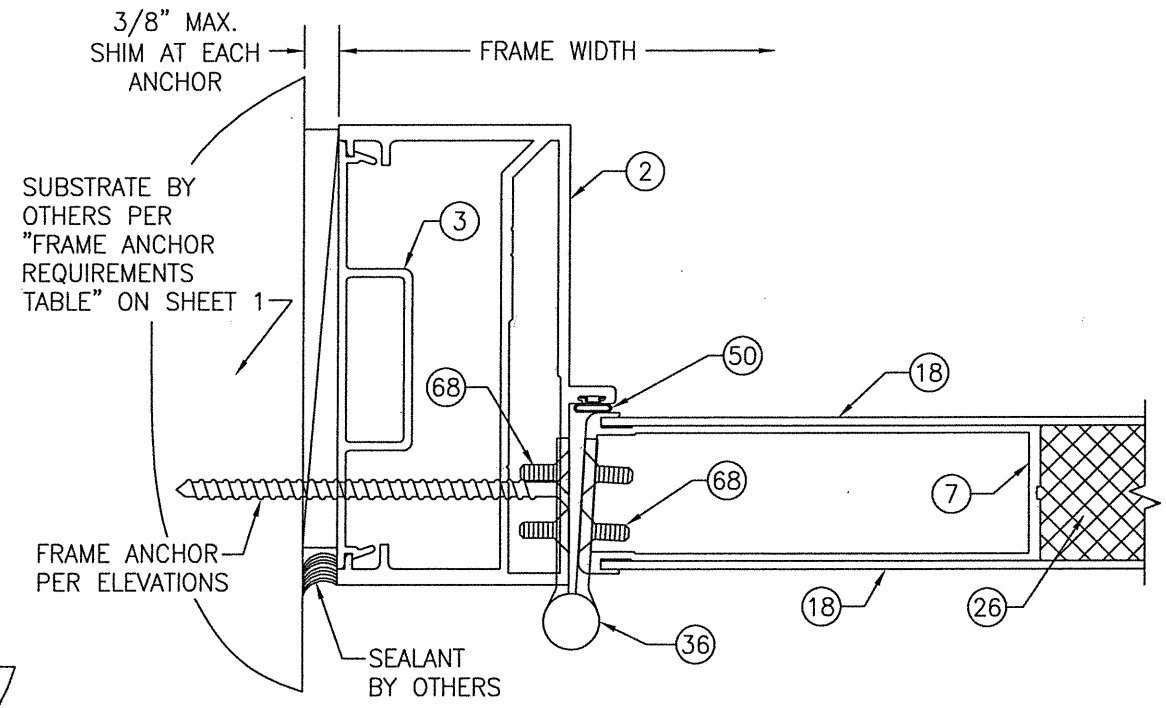
DRAWN BY: W.W.S.		CHECKED BY: W.W.S.	
PLOT: 1=24		DATE: 03/04/21	
NO.	REVISION DESCRIPTION	DATE	BY
DRAWING TITLE FLUSHLINE IMPACT DOORS WITH IR501 FRAMES			
JOB INFORMATION: KAWNEER COMPANY, INC. 555 GUTHRIDGE COURT NORCROSS, GA 30092 770-449-5555			
CONSULTANTS W. W. SCHAEFER ENGINEERING & CONSULTING, P.A. (REG. NO. F-14980) 7480 150TH COURT NORTH PALM BEACH GARDENS, FL 33418 PHONE: 561-744-3424			
CERTIFICATION		MAR 04 2021	
WARREN W. SCHAEFER 113497 REGISTERED PROFESSIONAL ENGINEER STATE OF TEXAS		WARREN W. SCHAEFER, P.E. P.E. NO. 113497	
DRAWING NO. 1913T		REV.	
SHEET NO. 2 OF 7			



SECTION A
SCALE: 1/2 FULL

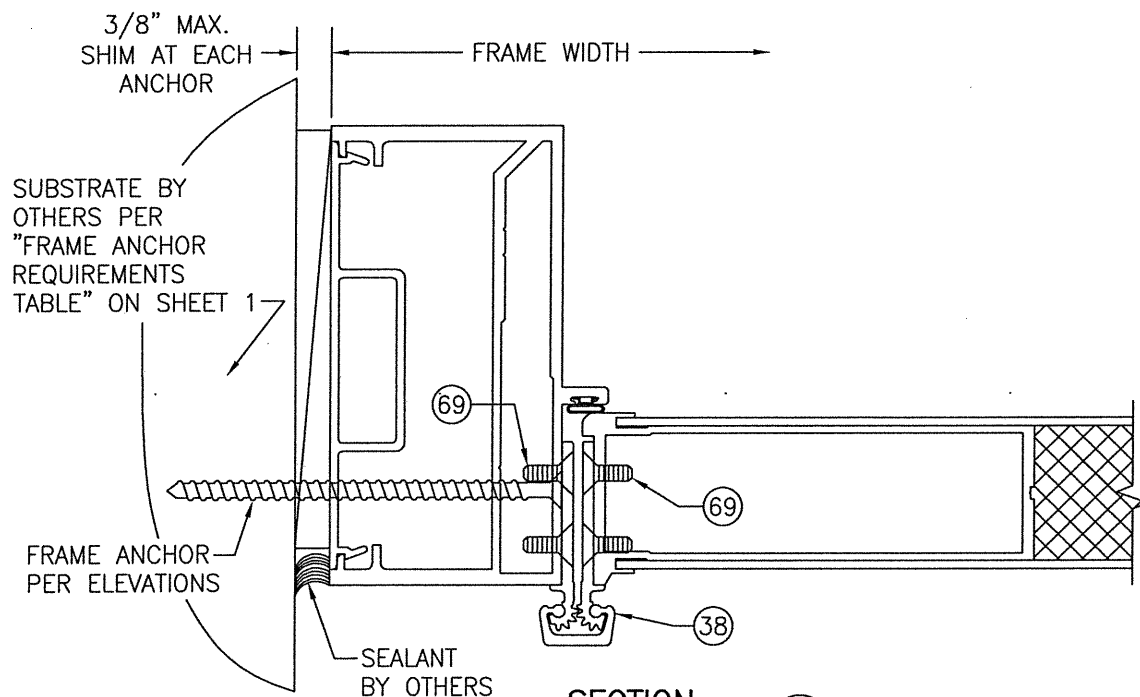


SECTION B
SCALE: 1/2 FULL

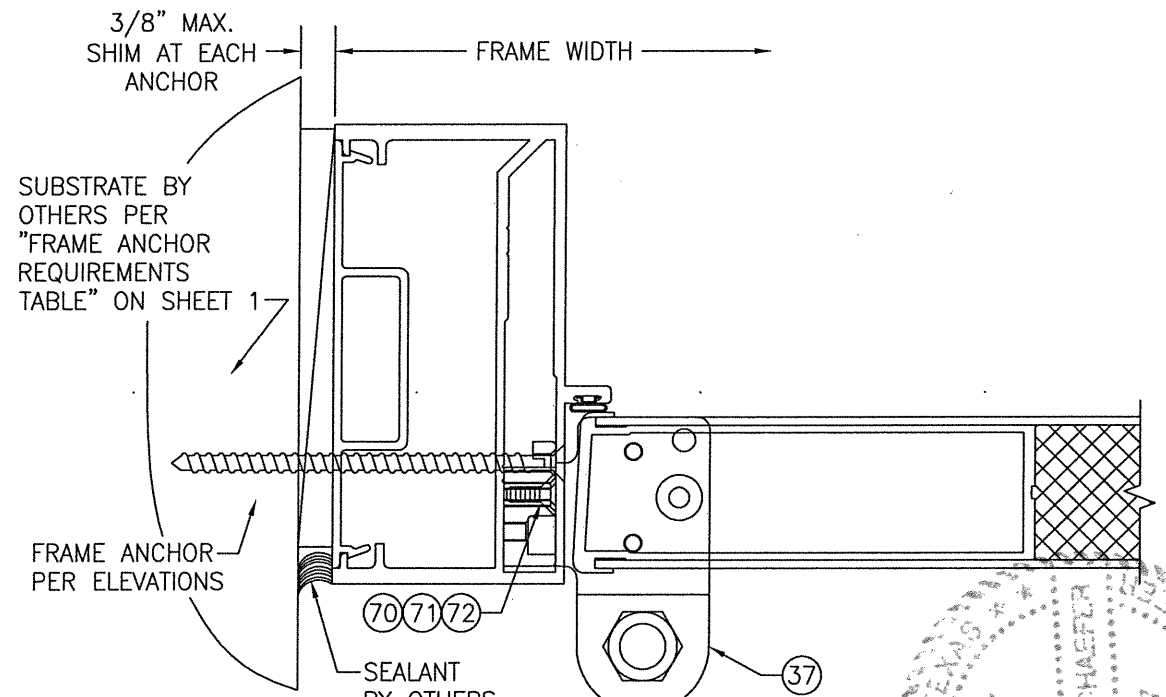


SECTION C1
SCALE: 1/2 FULL
(BUTT HINGE)

SEE GLAZING
DETAIL ON
SHEET 5

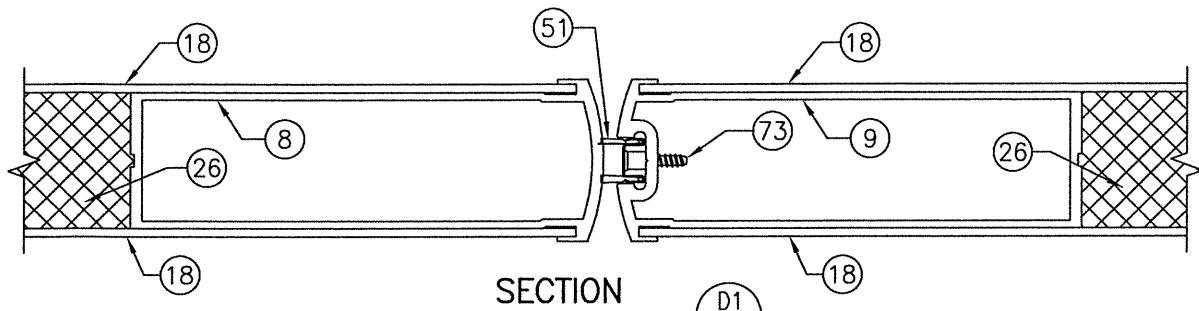


SECTION C2
SCALE: 1/2 FULL
(CONTINUOUS GEAR HINGE)
FOR DETAIL NOT SHOWN, SEE SECTION C1/3.

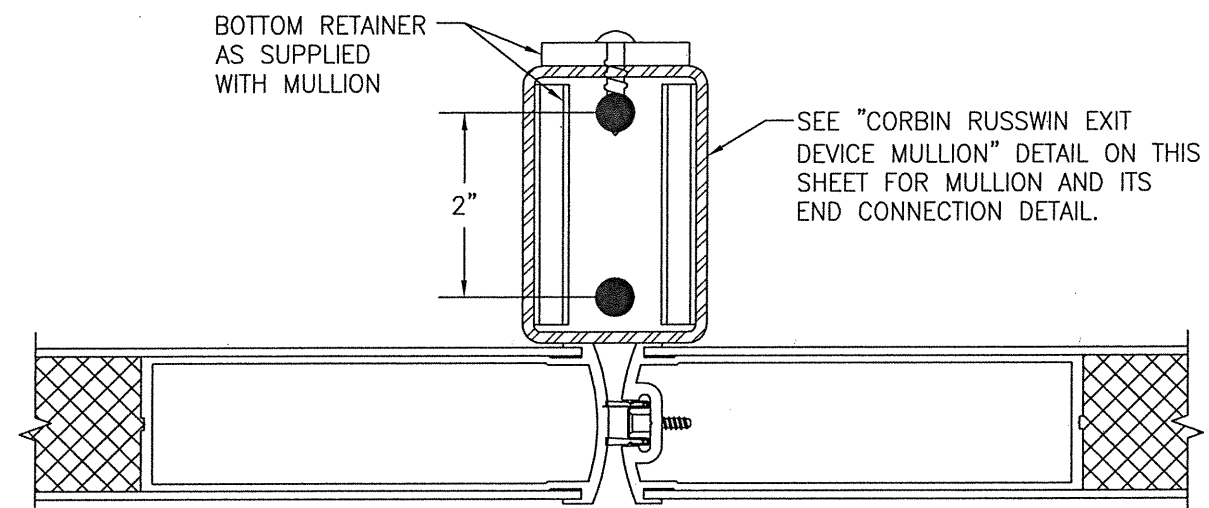


SECTION C3
SCALE: 1/2 FULL
(OFFSET PIVOT HINGE)
FOR DETAIL NOT SHOWN, SEE SECTION C1/3.

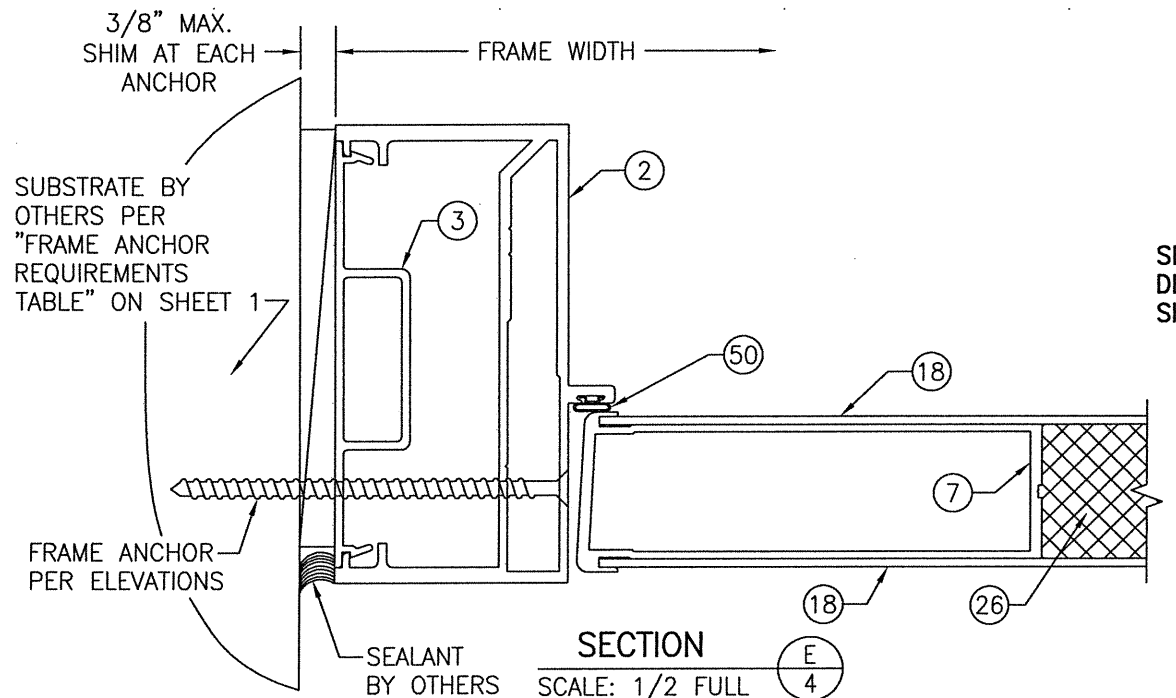
DRAWN BY: W.W.S.	CHECKED BY: W.W.S.
PLOT: 1=24	DATE: 02/29/16
NO.	REVISION DESCRIPTION
DATE	BY
DRAWING TITLE: FLUSHLINE IMPACT DOORS WITH IR501 FRAMES CONSULTANTS: W. W. SCHAEFER ENGINEERING & CONSULTING, P.A. (REG. NO. F-14980) 7480 150TH COURT NORTH, PALM BEACH GARDENS, FL 33418 PHONE: 561-744-3424 JOB INFORMATION: KAWNEER COMPANY, INC. 555 GUTHRIDGE COURT NORCROSS, GA 30092 770-449-5555	
CERTIFICATION: MAR 04 2021 WARREN W. SCHAEFER, P.E. P.E. NO. 113497	
DRAWING NO. 1913T	REV.
SHEET NO. 3	OF 7



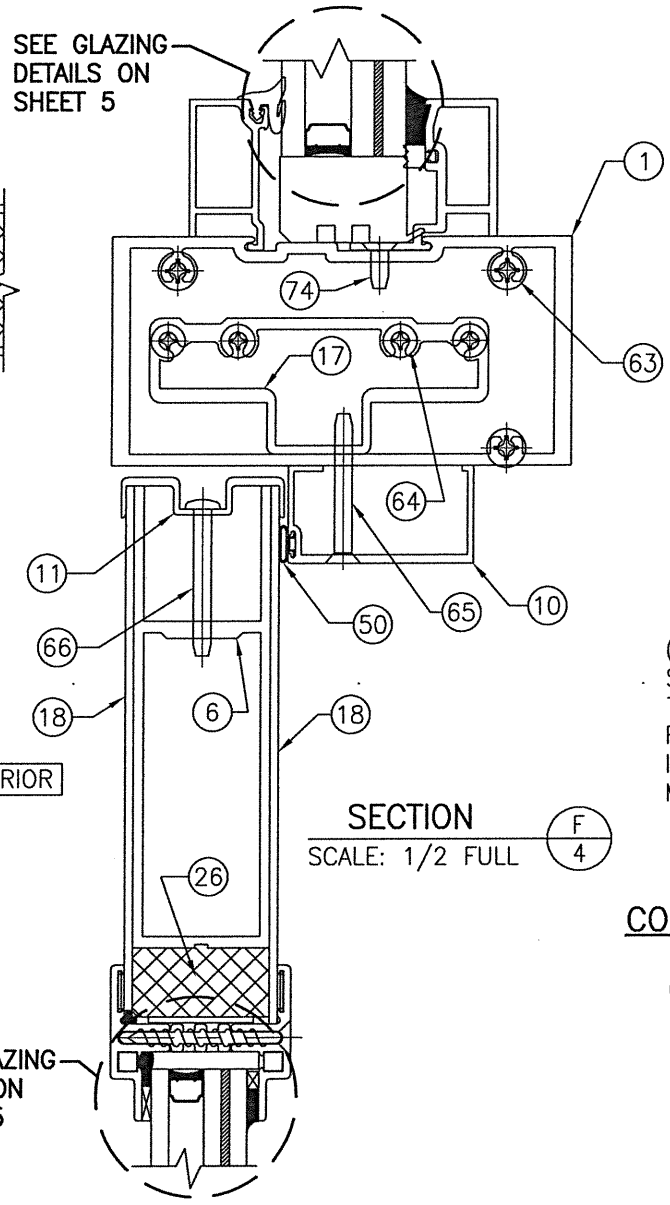
SECTION D1
SCALE: 1/2 FULL
(APPLICABLE WITH LOCK CONDITIONS 1, 2 & 4)



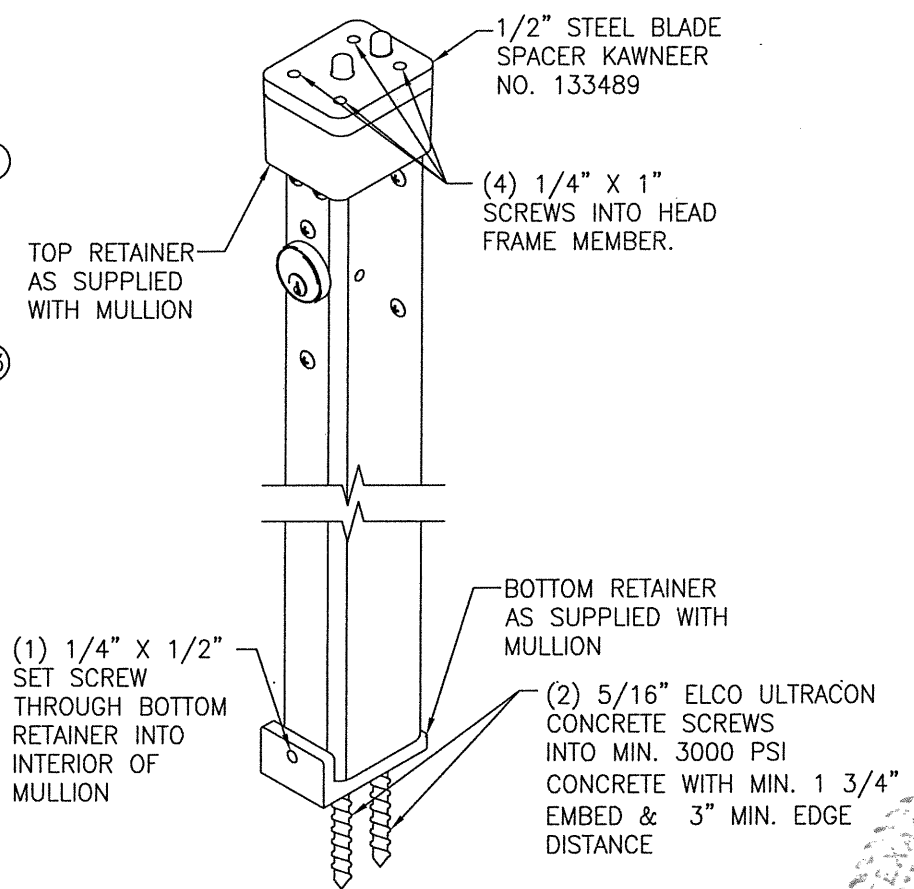
SECTION D2
SCALE: 1/2 FULL
(APPLICABLE WITH LOCK CONDITION 3)
FOR DETAIL NOT SHOWN, SEE SECTION D1/4.



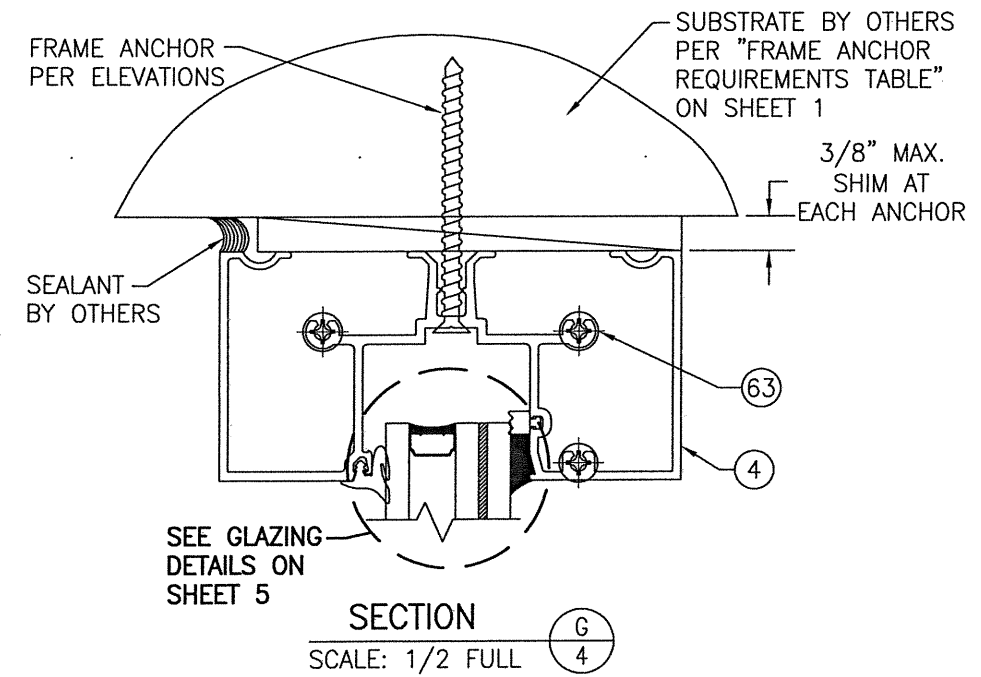
SECTION E
SCALE: 1/2 FULL



SECTION F
SCALE: 1/2 FULL



CORBIN RUSSWIN WS708AKM KEYED INTERIOR MULLION
(KEYED LOCK SHOWN IS AT INTERIOR)
(APPLICABLE WITH CORBIN RUSSWIN EXIT DEVICE ITEM #43 ONLY)



SECTION G
SCALE: 1/2 FULL

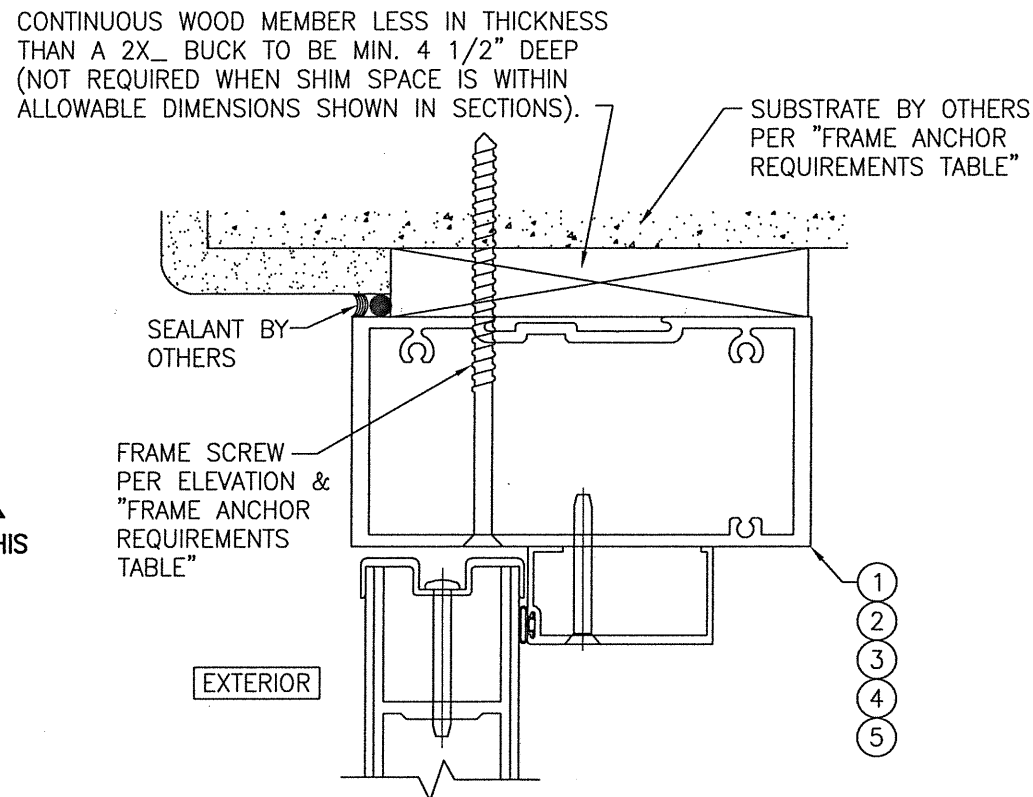
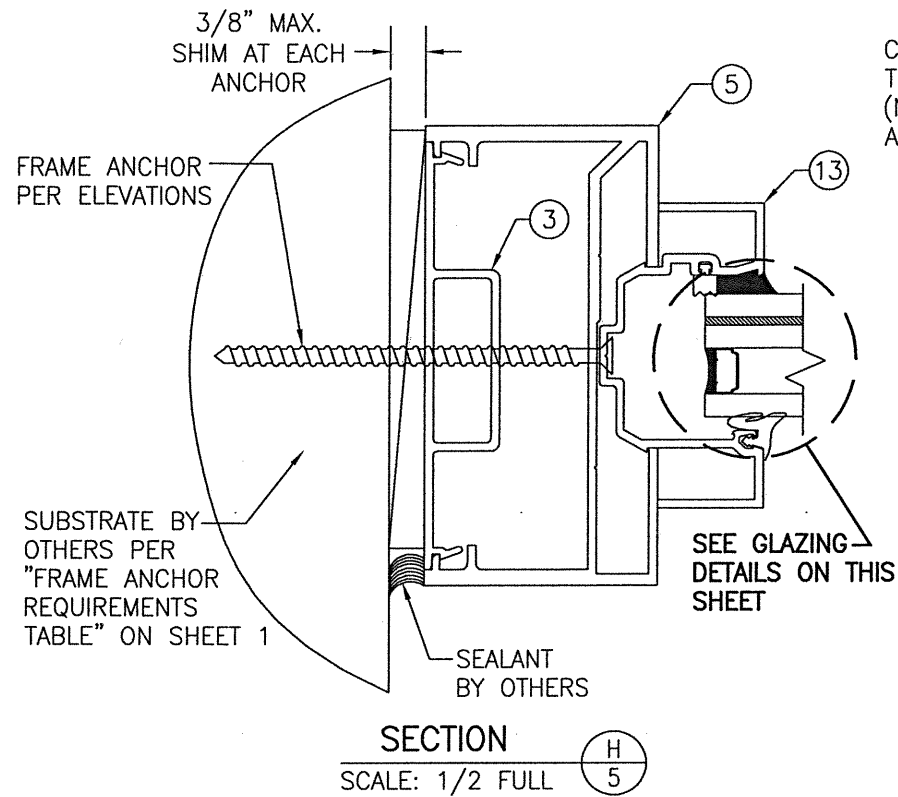
DRAWN BY: W.W.S.	CHECKED BY: W.W.S.
PLOT: 1=24	DATE: 02/29/16
NO.	REVISION DESCRIPTION
BY	DATE

FLUSHLINE IMPACT DOORS WITH IR501 FRAMES
JOB INFORMATION:
KAWNEER COMPANY, INC.
555 GUTHRIDGE COURT
NORCROSS, GA 30092
770-449-5555

CONSULTANTS
W. W. SCHAEFER ENGINEERING & CONSULTING, P.A. (REG. NO. F-14980)
7480 150TH COURT NORTH, 33418
PALM BEACH GARDENS, FL
PHONE: 561-744-3424

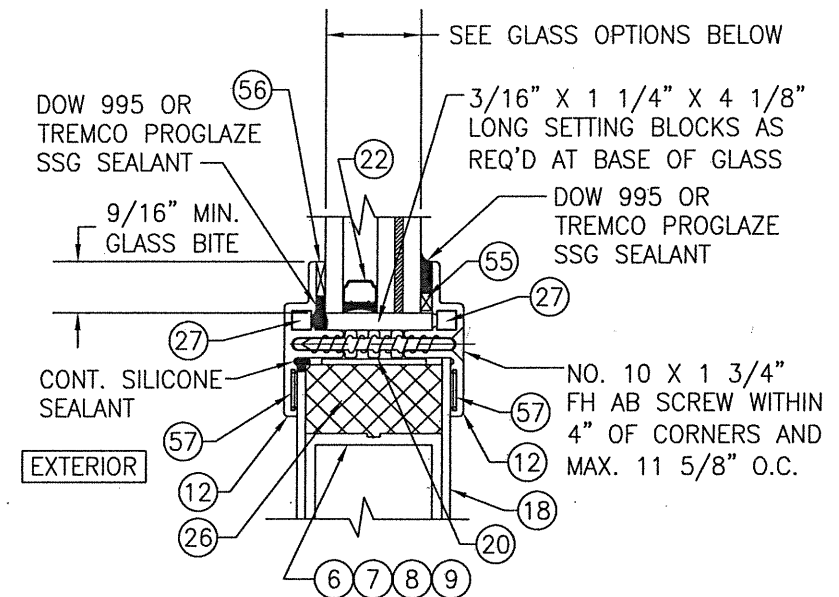
CERTIFICATION
113407
MAR 04 2021
WARREN W. SCHAEFER, P.E.
P.E. NO. 113497

DRAWING NO. 1913T	REV.
SHEET NO. 4	OF 7



OPTIONAL DIRECT MOUNT DETAIL TO SUBSTRATE WITH SPACER

(HEAD SECTION SHOWN; SIDES ARE INSTALLED THE SAME)
(FOR DETAIL NOT SHOWN, SEE OTHER SECTIONS)

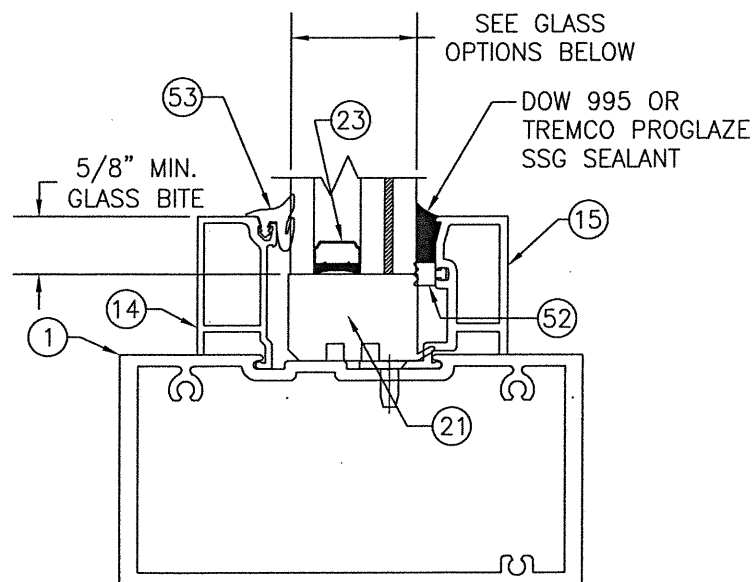


TYPICAL DOOR PANEL GLAZING DETAIL

GLASS OPTIONS:

OPTION 1: 1 1/32" THICK I.G. GLASS (3/16" TEMP EXTERIOR; 3/8" SPACER; 3/16" HS/0.09 EASTMAN CHEM. CO. SAFLEX/3/16" HS INTERIOR

OPTION 2: 1 1/32" THICK I.G. GLASS (3/16" TEMP EXTERIOR; 3/8" SPACER; 3/16" HS/0.09 KURARAY BUTACITE PVB/3/16" HS INTERIOR

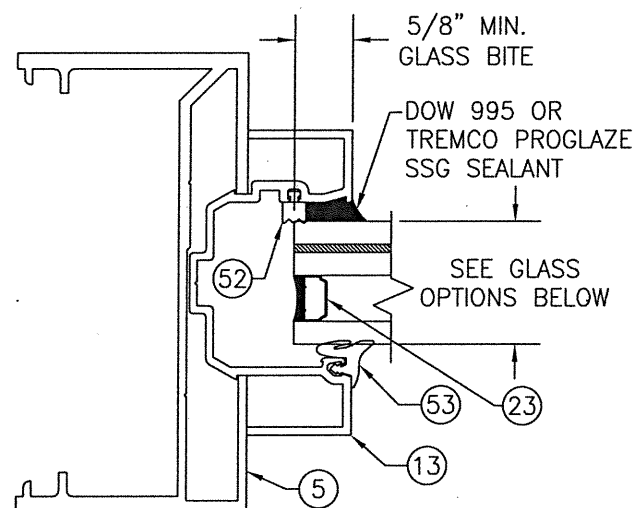


TYPICAL TRANSOM SILL GLAZING DETAIL

GLASS OPTIONS:

OPTION 1: 1 5/16" THICK I.G. GLASS (1/4" TEMP EXTERIOR; 1/2" SPACER; 1/4" HS/0.09 EASTMAN CHEM. CO. SAFLEX/1/4" HS INTERIOR

OPTION 2: 1 5/16" THICK I.G. GLASS (1/4" TEMP EXTERIOR; 1/2" SPACER; 1/4" HS/0.09 KURARAY BUTACITE PVB/1/4" HS INTERIOR

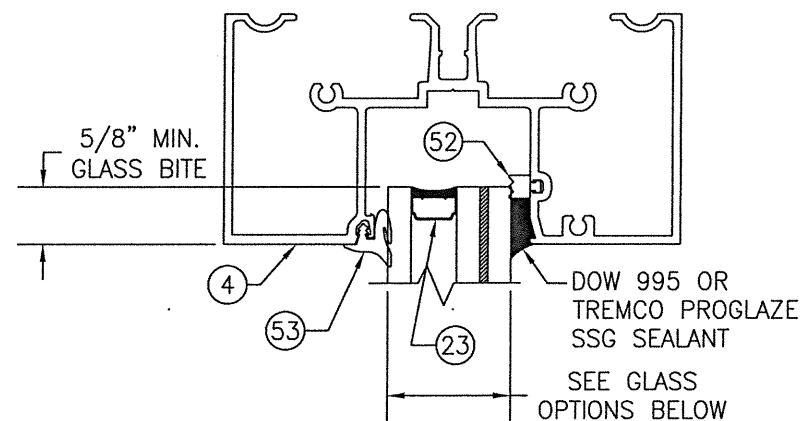


TYPICAL TRANSOM JAMB GLAZING DETAIL

GLASS OPTIONS:

OPTION 1: 1 5/16" THICK I.G. GLASS (1/4" TEMP EXTERIOR; 1/2" SPACER; 1/4" HS/0.09 EASTMAN CHEM. CO. SAFLEX/1/4" HS INTERIOR

OPTION 2: 1 5/16" THICK I.G. GLASS (1/4" TEMP EXTERIOR; 1/2" SPACER; 1/4" HS/0.09 KURARAY BUTACITE PVB/1/4" HS INTERIOR



TYPICAL TRANSOM HEAD GLAZING DETAIL

GLASS OPTIONS:

OPTION 1: 1 5/16" THICK I.G. GLASS (1/4" TEMP EXTERIOR; 1/2" SPACER; 1/4" HS/0.09 EASTMAN CHEM. CO. SAFLEX/1/4" HS INTERIOR

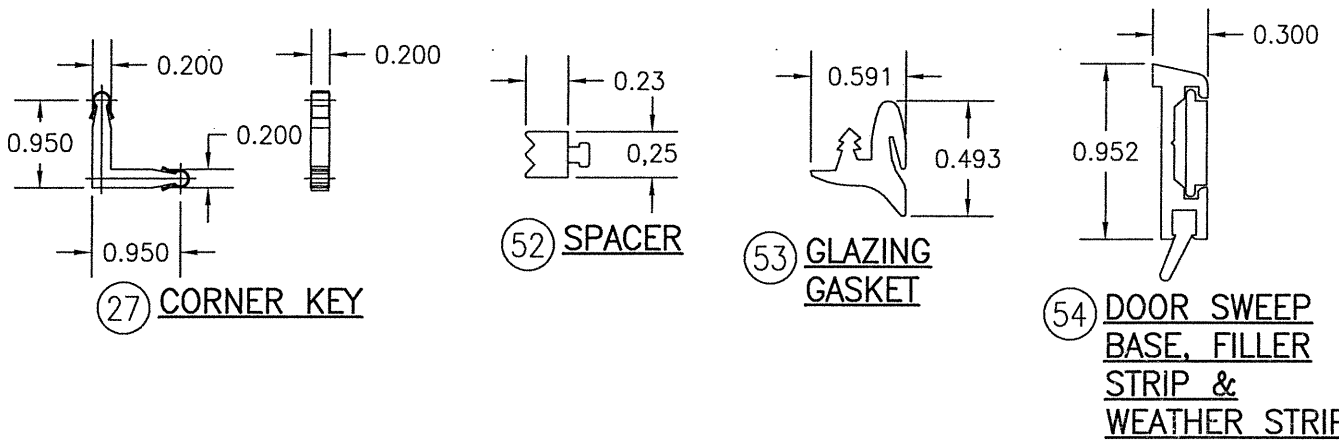
OPTION 2: 1 5/16" THICK I.G. GLASS (1/4" TEMP EXTERIOR; 1/2" SPACER; 1/4" HS/0.09 KURARAY BUTACITE PVB/1/4" HS INTERIOR

DRAWN BY: W.W.S.	CHECKED BY: W.W.S.
PLOT: 1-24	DATE: 02/29/16
NO.	REVISION DESCRIPTION
DATE	BY
DRAWING TITLE FLUSHLINE IMPACT DOORS WITH IR501 FRAMES	
JOB INFORMATION: KAWNEER COMPANY, INC. 555 GUTHRIE COURT NORCROSS, GA 30092 770-449-5555	
CONSULTANTS W. W. SCHAEFER ENGINEERING & CONSULTING, P.A. (REG. NO. F-14980) 7480 150TH COURT NORTH, 33418 PALM BEACH GARDENS, FL PHONE: 561-744-3424	
CERTIFICATION	MAR 04 2021 WARREN W. SCHAEFER, P.E. P.E. NO. 113497
DRAWING NO. 1913T	REV.
SHEET NO. 5	OF 7



ITEM #	ITEM DESCRIPTION	MANUFACTURER/NOTES
PARTS		
1	DOOR HEAD FRAME	6063-T6 ALUMINUM
2	DOOR SIDE JAMB	6063-T6 ALUMINUM
3	JAMB FILLER	6063-T6 ALUMINUM
4	TRANSOM HEAD FRAME	6063-T6 ALUMINUM
5	TRANSOM SIDE JAMB	6063-T6 ALUMINUM
6	TOP & BOTTOM DOOR RAIL	6063-T6 ALUMINUM
7	LOCK & HINGE STILE	6063-T6 ALUMINUM
8	INACTIVE MEETING STILE	6063-T6 ALUMINUM
9	ACTIVE MEETING STILE	6063-T6 ALUMINUM
10	DOOR PANEL STOP	6063-T6 ALUMINUM
11	TOP & BOTTOM DOOR RAIL TRIM CAP	6063-T6 ALUMINUM
12	VISION LITE 1" FRAME (GLASS STOP)	6063-T6 ALUMINUM
13	POCKET INSERT	6063-T6 ALUMINUM
14	EXTERIOR GLASS STOP	6063-T6 ALUMINUM
15	INTERIOR GLASS STOP	6063-T6 ALUMINUM
16	DOOR THRESHOLD	6063-T6 ALUMINUM
17	DOOR HEAD/TRANSOM MULLION SHEAR BLOCK	6063-T6 ALUMINUM
18	0.09" THICK DOOR PANEL SHEET	FIBER REINFORCED PLASTIC OR 5005 ALUMINUM
19	PANIC DEVICE STRIKE SPACER	ALUMINUM; USED W/ITEM #43 & SINGLE DOOR ONLY
20	VISION LITE FRAME INSERT	ABS BLACK
21	TRANSOM GLASS SETTING BLOCK	EPDM
22	DOOR GLASS IG SPACER	A93105 ALUMINUM
23	TRANSOM GLASS IG SPACER	A93105 ALUMINUM
24	SILL END ANGLE CLIP	HR STEEL
25	PANEL CORNER WELD CLIP	6063-T6 ALUMINUM
26	FOAM FILL	5.0 LB/CF PVC FOAM CORE
27	VISION-LITE CORNER KEY	DIE CAST ZINK
HARDWARE		
36	4.5" X 4" BALL BEARING BUTT HINGE	HAGAR A797 304 SS NRP
37	OFFSET PIVOT HINGE	TOP PIVOT: KAWNEER NO. 050300/035520 INTERMEDIATE PIVOT: KAWNEER NO. 037233/037234 BOTTOM PIVOT: KAWNEER NO. 037837/035524/035523
38	CONTINUOUS GEAR HINGE	KAWNEER NO. 050821
39	3-POINT MULTI-POINT ACTIVE DOOR LOCK	KAWNEER NO. T237601
40	INACTIVE DOOR TOP FLUSH BOLT	KAWNEER NO. 050079
41	INACTIVE DOOR BOTTOM FLUSH BOLT	KAWNEER NO. 050079
42	CONCEALED ROD EXIT/PANIC DEVICE	KAWNEER 1686
43	RIM PANIC DEVICE WITH KEYED REMOVABLE MULLION	CORBIN RUSSWIN ED5200S(A)
44	MORTISE LOCK	SCHLAGE L9453L PACKAGE
SEALS & SEALANTS		
50	WEATHERING BULB	ALCRYN/RIGID PVC (DUROMETER = 60)
51	ADJUSTABLE ASTRIGAL SEAL	SS/NYLON/POLYURETHANE
52	SPACER	TPV; POLYPROPYLENE
53	GLAZING GASKET	EPDM SHORE A (DUROMETER = 65 +/-5)
54	DOOR SWEEP BASE, FILLER STRIP & WEATHER STRIP	6063-T6 ALUMINUM/430 SS/EPDM
55	1/8" X 3/16" SPACER	POLYURETHANE FOAM
56	3/16" X 3/8" GLAZING TAPE	CLOSED CELL PVC
57	1/8" X 3/8" GLAZING TAPE	CLOSED CELL PVC
FASTENERS		
63	NO. 12 X 1" PHTF SCREWS	3 PER FRAME CORNER
64	NO. 10 X 1 19/32" PHTF SCREWS	4 PER SHEAR BLOCK
65	NO. 10 X 1 5/8" FHTF TYPE "B" SCREWS	1" FROM ENDS & MAX. 16" O.C.
66	NO. 10 X 1 19/32" FHTF TYPE "B" SCREWS	6" FROM ENDS & MAX. 10" O.C.

ITEM #	ITEM DESCRIPTION	MANUFACTURER/NOTES
FASTENERS CONT'D		
67	NO. 8 X 1/2" FHTF TYPE "B" SCREWS	1/4" FROM ENDS & MAX. 9 1/2" O.C.
68	NO. 12-24 X 9/16" SS FH SCREW	4 PER BUTT HINGE LEAF
69	NO. 12-24 X 11/16" SS FH SCREWS	2 9/16" FROM ENDS & MAX. 5 1/8" O.C.
70	5/16"-18 X 5/8" SS SCREW	2 PER TOP PIVOT HINGE
71	NO. 12-24 X 9/16" SS SCREW	2 PER INTERMEDIATE PIVOT HINGE
72	1/4-20 X 3/8" SS SCREW	3 PER BOTTOM PIVOT HINGE
73	0.279-0.188 DIA. X 0.563" LONG ADJUSTING SCREW	POSITIONED AS REQUIRED BY KAWNEER
74	NO. 10 X 1/2" FHTF SCREW	3" FROM ENDS & MAX. 18" O.C.



DRAWN BY: W.W.S.	CHECKED BY: W.W.S.
PLOT: 1=24	DATE: 02/29/18
DATE	
BY	
REVISION DESCRIPTION	
NO.	
JOB INFORMATION:	
FLUSHLINE IMPACT DOORS WITH IR501 FRAMES	
KAWNEER COMPANY, INC. 555 GUTHRIE COURT NORCROSS, GA 30092 770-449-5555	
CONSULTANTS W. W. SCHAEFER ENGINEERING & CONSULTING, P.A. (REG. NO. F-14980) 7480 150TH COURT NORTH PALM BEACH GARDENS, FL 33418 PHONE: 561-744-3424	
DRAWING TITLE FLUSHLINE IMPACT DOORS WITH IR501 FRAMES	
CERTIFICATION MAR 04 2021 WARREN W. SCHAEFER, P.E. P.E. NO. 113497	
DRAWING NO. 1913T	REV.
SHEET NO. 7	OF 7