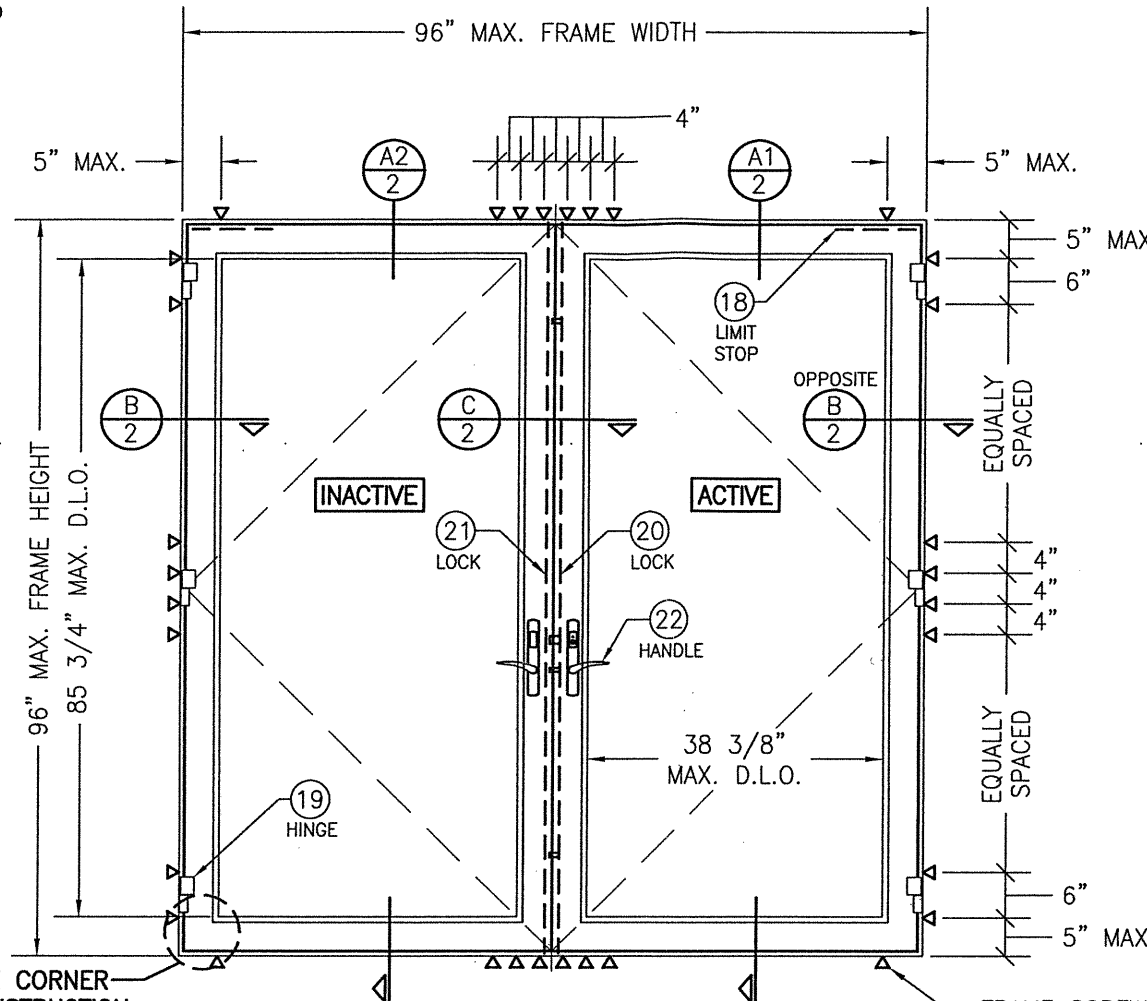


**GENERAL NOTES:**

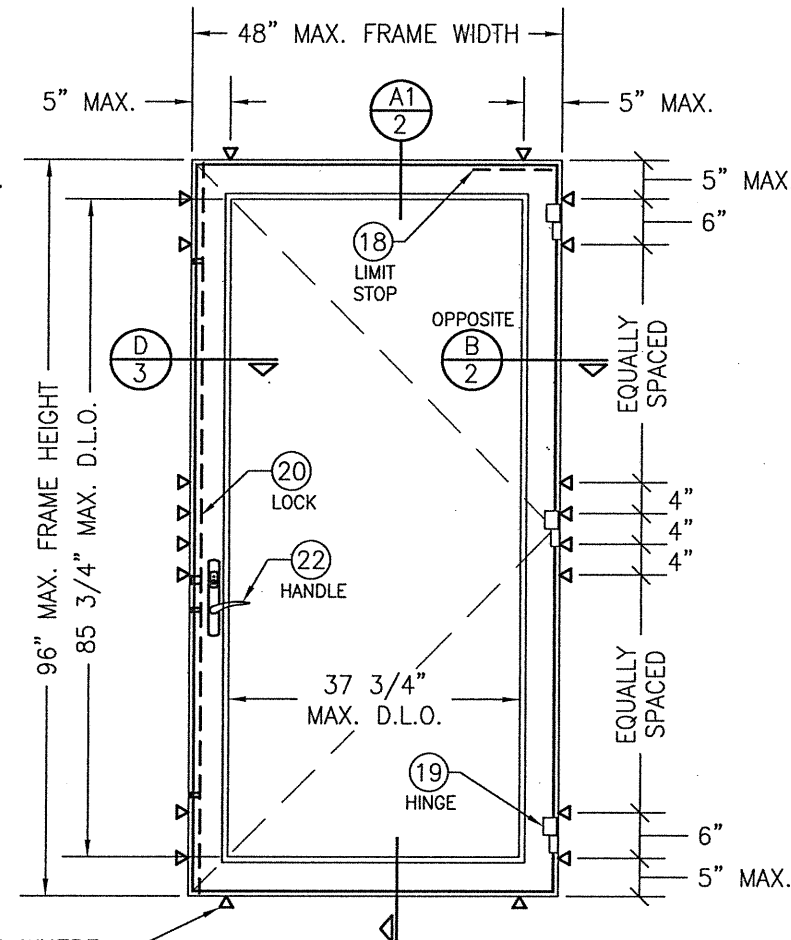
1. THIS PRODUCT HAS BEEN TESTED, ANALYZED & APPROVED FOR DESIGN PRESSURES NOT TO EXCEED THOSE SHOWN IN THE "ALLOWABLE DESIGN PRESSURE TABLE(S)."
2. OPENINGS, BUCKING & BUCKING FASTENERS MUST BE PROPERLY DESIGNED & INSTALLED TO TRANSFER WIND LOADS TO THE STRUCTURE.
3. ALL HARDWARE & FASTENERS SHALL BE IN ACCORDANCE WITH THESE DRAWINGS & SHALL NOT VARY UNLESS SPECIFICALLY MENTIONED ON THE DRAWINGS. SPECIFIED ANCHOR EMBED TO BASE MATERIAL SHALL BE BEYOND WALL FINISH OR STUCCO.
4. THE DETAILS & SPECIFICATIONS SHOWN HEREIN REPRESENT THE PRODUCTS TESTED & PROPOSED FOR WATER, AIR, IMPACT, CYCLIC & UNIFORM STATIC AIR PRESSURE TESTING IN CONFORMANCE WITH 2018 IBC REFERENCED STANDARDS ASTM E330, E283, E331, E1886 & E1996 & AAMA 1304 FOR LARGE & SMALL MISSILE IMPACT PRODUCTS. ALL TESTING OF THIS PRODUCT TO STANDARDS LESS CURRENT THAN THOSE SPECIFIED IN THE 2018 IBC HAS BEEN DETERMINED EQUIVALENT TO THE MORE CURRENT VERSIONS OF THOSE STANDARDS REFERENCED IN THE 2018 IBC.
5. THIS PRODUCT HAS BEEN DESIGNED IN ACCORDANCE WITH AND MEETS THE REQUIREMENTS OF THE 2018 INTERNATIONAL BUILDING CODE (IBC) & IS BOTH LARGE & SMALL MISSILE IMPACT RATED.
6. WHEN GLAZED FOR SMALL MISSILE IMPACT, THIS PRODUCT MAY NOT BE INSTALLED AT ELEVATIONS BELOW 30 FT. ABOVE GRADE OR AT ANY CODE DESIGNATED LARGE MISSILE IMPACT LOCATION WITHOUT AN APPROVED SHUTTER.
7. WHEN LARGE MISSILE IMPACT GLAZED, IMPACT SHUTTERS ARE NOT REQUIRED WITH THIS PRODUCT.
8. ALL ANCHORS SECURING PRODUCT FRAMES TO PRESSURE TREATED BUCKS OR WOOD FRAMING SHALL BE CAPABLE OF RESISTING CORROSION CAUSED BY THE PRESSURE TREATING CHEMICALS IN THE WOOD.
9. DETERMINE THE POSITIVE & NEGATIVE DESIGN LOADS TO USE WHEN REFERENCING THESE DOCUMENTS IN ACCORDANCE WITH THE GOVERNING CODE AND GOVERNING WIND VELOCITY. FOR WIND LOAD CALCULATIONS IN ACCORDANCE WITH THE INTERNATIONAL BUILDING CODE, A DIRECTIONALITY FACTOR OF  $KD = 0.85$  MAY BE APPLIED PER THE ASCE-7 STANDARD.
10. MATERIALS, INCLUDING BUT NOT LIMITED TO STEEL SCREWS, THAT COME INTO CONTACT WITH OTHER DISSIMILAR MATERIALS SHALL BE SEPARATED OR COATED AS REQUIRED TO AVOID CORROSION OF EITHER MATERIAL.
11. TO THE BEST OF OUR KNOWLEDGE, THE PRODUCT SHOWN HEREIN ARE QUALITY ASSURED BY AN APPROVED CERTIFICATION/QA ENTITY & SHALL BE LABELED IN ACCORDANCE WITH APPLICABLE STANDARDS. THESE DRAWINGS SHOW ALL APPLICABLE ELEVATION, COMBINATION, INSTALLATION & COMPARATIVE ANALYSIS CONDITIONS AS DETERMINED THROUGH TESTING & ENGINEERING RATIONAL ANALYSIS. PRODUCT ASSEMBLY SHALL BE IN ACCORDANCE WITH THESE DRAWINGS, THE MANUFACTURER'S QUALITY ASSURANCE SPECIFICATIONS & TESTING REPORTS.
12. CERTIFICATION OF THIS PRODUCT SHALL BE CONSIDERED VOID IF THEY ARE INSTALLED WITHOUT A BUILDING PERMIT FROM THE APPLICABLE LOCAL BUILDING DEPARTMENT OR IF THEY ARE INSTALLED BY ANYONE OTHER THAN A LICENSED CONTRACTOR EXPERIENCED WITH INSTALLATIONS OF THIS TYPE OF PRODUCT.

THESE DRAWINGS ARE APPLICABLE ONLY TO THE PRODUCT SPECIFIED. THEY MAY NOT BE USED FOR THE ASSEMBLY AND/OR INSTALLATION OF ANY OTHER PRODUCT NOR MAY THEY BE USED FOR RATIONAL AND/OR LOCAL APPROVAL OF ANY PRODUCT NOT PRODUCED BY THE MANUFACTURER STATED ON THESE DRAWINGS.

|           |        |                      |          |
|-----------|--------|----------------------|----------|
| DRAWN BY: | W.W.S. | CHECKED BY:          | W.W.S.   |
| PLOT:     | 1-24   | DATE:                | 02/08/21 |
| NO.       |        | REVISION DESCRIPTION |          |
| DATE      |        | BY                   |          |



**INTERIOR ELEVATION:  
DOUBLE RECTANGULAR DOOR**  
SCALE: 1/2" = 1'-0"



**INTERIOR ELEVATION:  
SINGLE RECTANGULAR DOOR**  
SCALE: 1/2" = 1'-0"

SEE CORNER CONSTRUCTION DESCRIPTIONS ON THIS SHEET

FRAME SCREWS WHERE SHOWN. SEE "FRAME ANCHOR REQUIREMENTS TABLE" ON THIS SHEET FOR REQUIREMENTS.

**CORNER CONSTRUCTION:**

**FRAME:** MEMBERS ARE MITER CUT, BUTTED & JOINED VIA TWO(2) SHEAR BLOCKS (PART #'S 11 & 12). EACH SHEAR BLOCK IS FASTENED TO THE THE FRAME MEMBER WITH TWO(2) 5MM X 20MM SCREWS (2 PER BLOCK; 4 PER CORNER). CORNERS, ACCESS HOLES AND SCREW HEADS ARE SEALED WITH TREMCO 600 SILICONE SEALANT & A 1/2" X 2" BACKER ROD BETWEEN THE THERMAL BREAK.  
**RAIL TO STILE:** MEMBERS ARE MITER CUT, BUTTED & JOINED VIA A SHEAR BLOCK (PART #13). THE SHEAR BLOCK IS SNAP FIT INTO THE STILES & RAILS. CORNERS AND ACCESS HOLES ARE SEALED WITH TREMCO 600 SILICONE SEALANT.

EVALUATION OF THIS PRODUCT IS BASED ON APPLICABLE STANDARDS AND/OR INFORMATION & RESULTS FROM APPLICABLE TEST REPORTS. THE BUILDING CODE VERSION CONSIDERED WITH THIS EVALUATION WAS THAT IN FORCE AT THE TIME OF THE EVALUATION. IN THE EVENT OF CODE VERSION CHANGES/UPDATES OR IN THE EVENT THAT NEW OR ADDITIONAL TESTING IS COMPLETED ON THIS PRODUCT, PRIOR TO STATING CODE COMPLIANCE, THE MANUFACTURER SHALL CONFIRM WITH THE EVALUATION ENGINEER OF RECORD THAT EVERYTHING SPECIFIED HERE-IN IS CURRENT WITH ALL CURRENT TESTING, CODES AND APPLICABLE STANDARDS.

**FRAME ANCHOR REQUIREMENTS TABLE**

**FRAME SCREWS**

| OPENING TYPE (SUBSTRATE)                          | FRAME TO OPENING FASTENER TYPE    | MINIMUM EMBED | MINIMUM EDGE DIST. |
|---|-----------------------------------|---------------|--------------------|
| MIN. 2X4 WOOD FRAME OR BUCK (MIN. GR. 3 & G=0.55) | NO. 12 SMS OR WOOD SCREW          | 1 1/4"        | 7/8"               |
| MIN. 16 GA. 50 KSI METAL STUD                     | NO. 12 GR. 5 SELF TAP/DRILL SCREW | FULL          | 1/2"               |
| MIN. 1/8" THK A36 STEEL                           | NO. 12 GR. 5 SELF TAP/DRILL SCREW | FULL          | 1/2"               |
| MIN. 0.100" THK 6063-T5 ALUM.                     | NO. 12 GR. 5 SELF TAP/DRILL SCREW | FULL          | 1/2"               |
| MIN. C-90 CMU                                     | (1) 1/4" CONCRETE SCREW           | 1 1/4"        | 2 1/2"             |
| MIN. 3000 PSI CONCRETE                            | (1) 1/4" CONCRETE SCREW           | 1 1/2"        | 2 1/2"             |

(1) CONCRETE SCREWS SHALL BE ELCO ULTRACONS (C.S.), ELCO CRETE-FLEX (S.S.), ITW RAMSET/RED HEAD TAPCONS (C.S. OR S.S.) OR HILTI KWIK-CON II (C.S OR S.S.).

**ALLOWABLE DESIGN PRESSURE**

| GLAZING DETAIL                             | GLASS OPTION | ALLOWABLE PRESSURE (+/- PSF) |
|--|--------------|------------------------------|
| <b>LARGE MISSILE IMPACT (L.M.I.) DOORS</b> |              |                              |
| 1  | 1            | 90                           |
| 1  | 2            | 90                           |
| 1  | 3            | 90                           |
| 1  | 4            | 70                           |
| 1  | 5            | 70                           |
| 2  | 6            | 70                           |
| <b>SMALL MISSILE IMPACT (S.M.I.) DOORS</b> |              |                              |
| 3  | 7            | 90                           |
| 3  | 8            | 90                           |

SEE GLAZING DETAILS ON SHEET 3 FOR GLASS & GLAZING OPTIONS

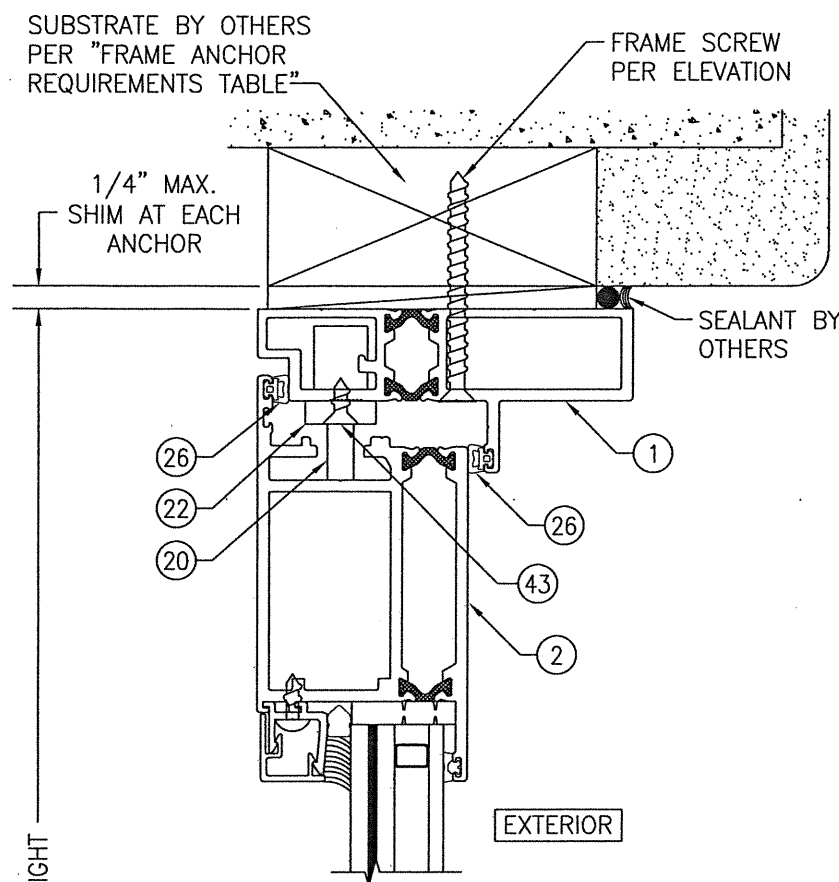
DRAWING TITLE: 2000T TERRACE SMALL & LARGE MISSILE IMPACT IN-SWING DOOR  
CONSULTANTS: W. W. SCHAEFER ENGINEERING & CONSULTING, P.A. (REG. NO. F-14980)

JOB INFORMATION:  
KAWNEER COMPANY, INC.  
555 GUTHRIDGE COURT  
NORCROSS, GA 30092  
770-449-5555

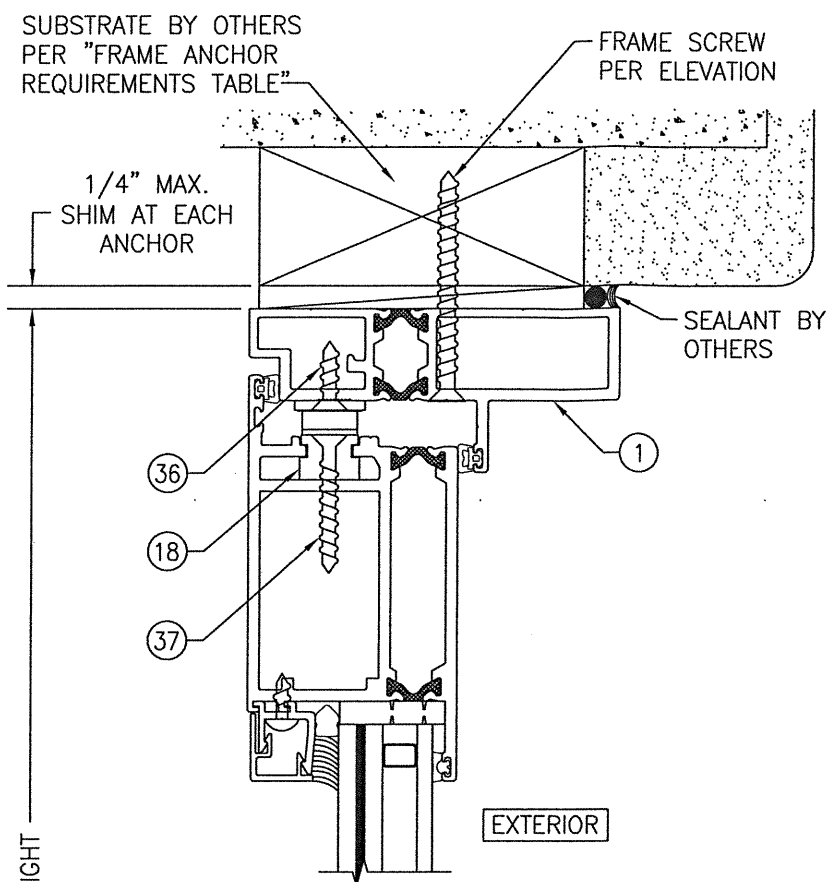
7480 150TH COURT NORTH  
PALM BEACH GARDENS, FL 33418  
PHONE: 561-744-3424

CERTIFICATION: FEB 08 2021  
WARREN W. SCHAEFER, P.E.  
P.E. NO. 113497

DRAWING NO. 1679T  
SHEET NO. 1 OF 4

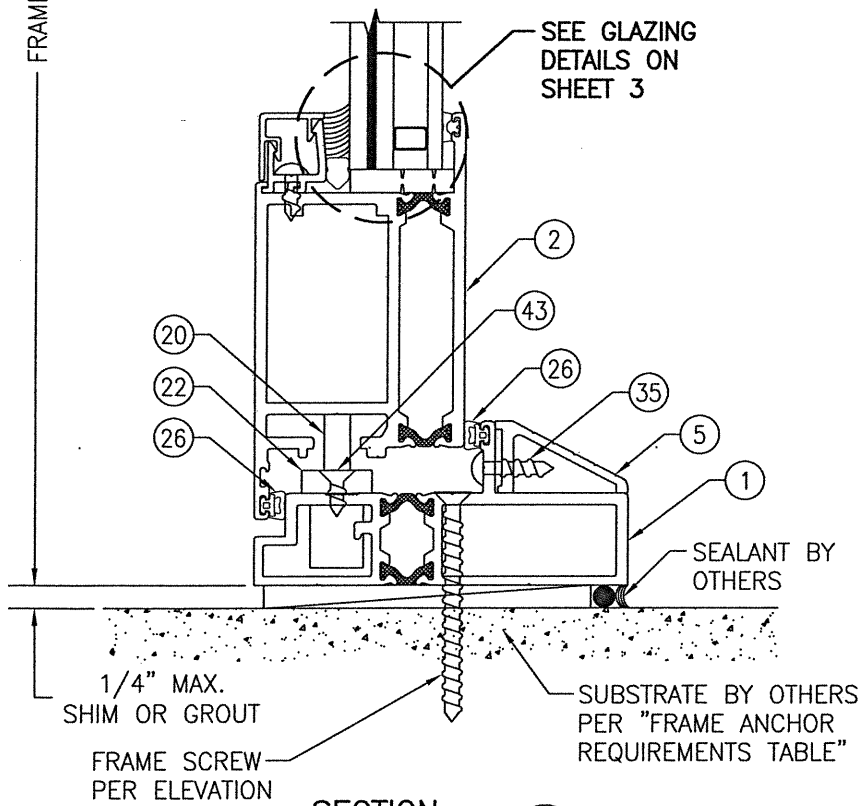


SECTION A1  
SCALE: 1/2 FULL

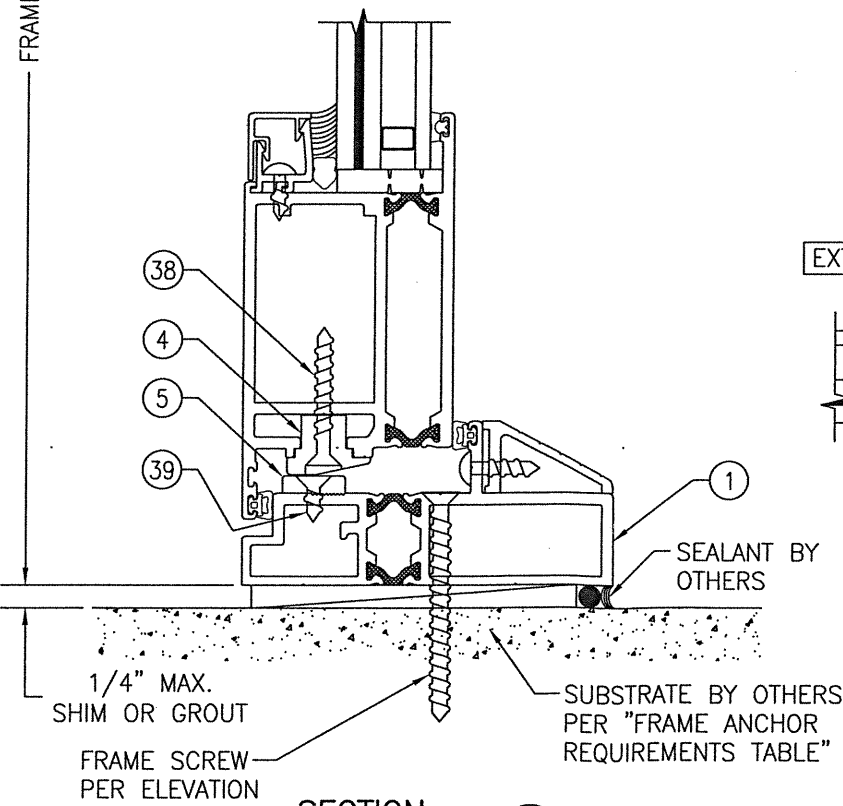


SECTION A2  
SCALE: 1/2 FULL

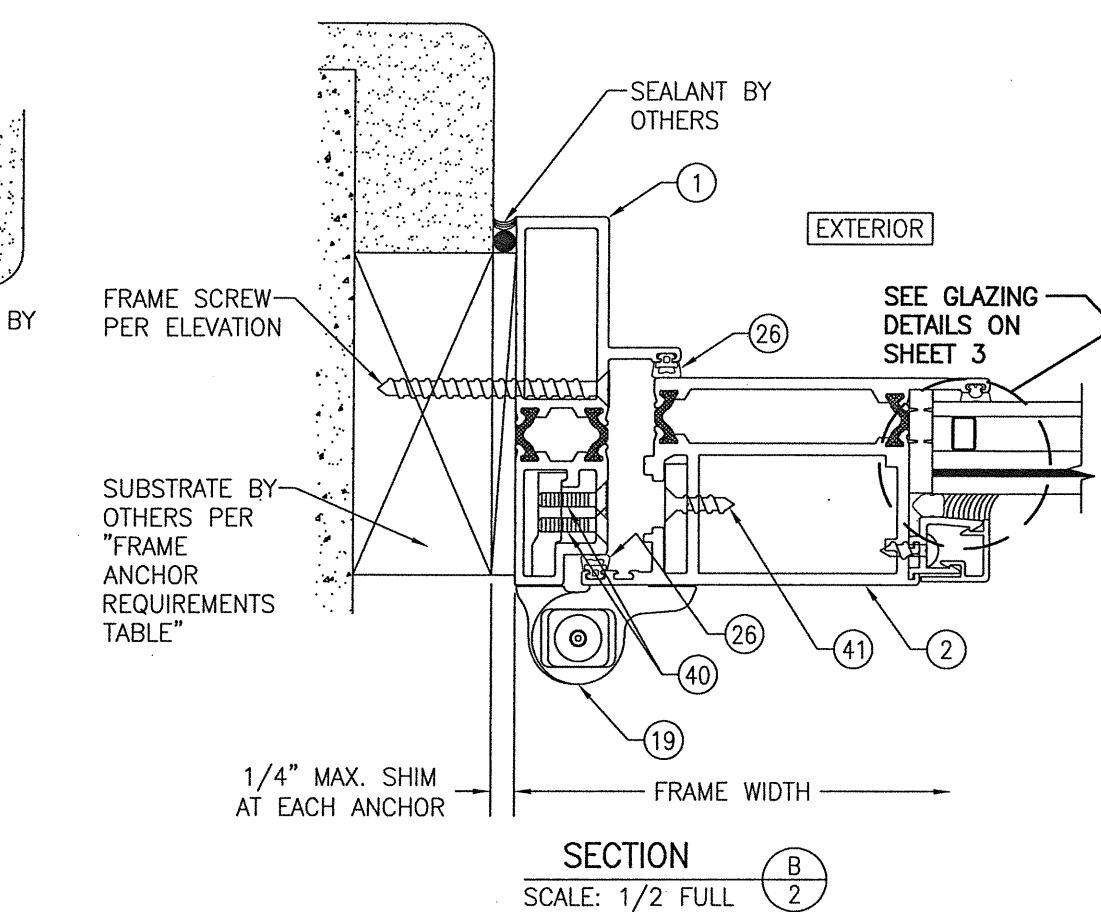
(FOR DETAIL NOT SHOWN, SEE SECTION A1/2)



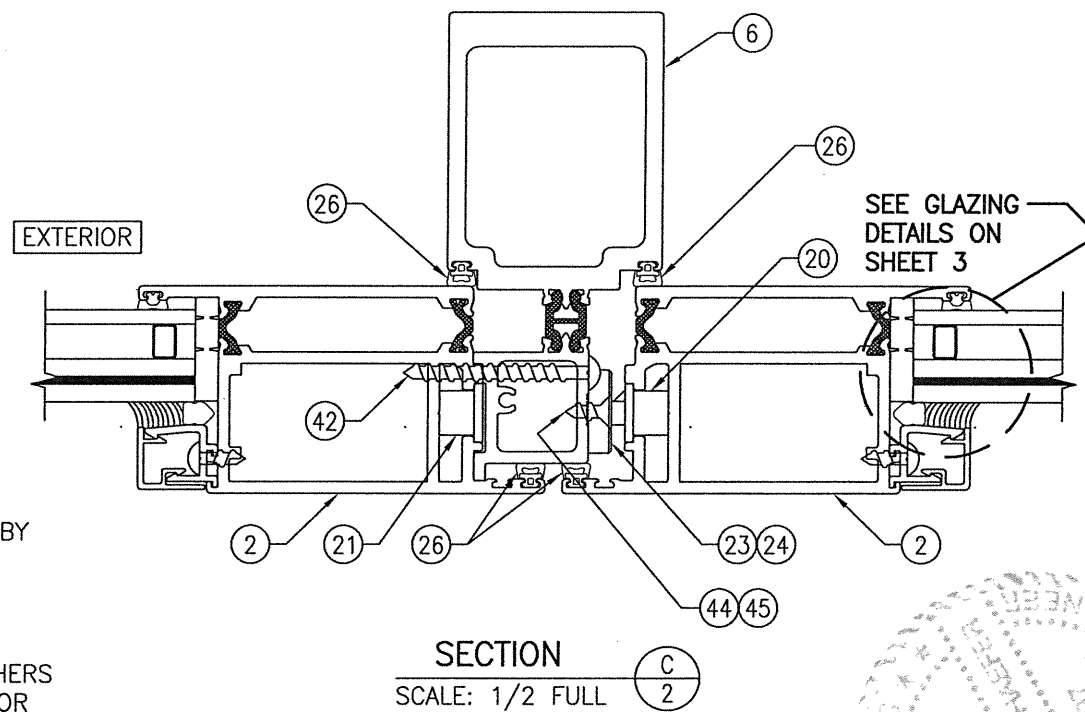
SECTION A1  
SCALE: 1/2 FULL



SECTION A2  
SCALE: 1/2 FULL



SECTION B  
SCALE: 1/2 FULL



SECTION C  
SCALE: 1/2 FULL

|                      |                       |
|----------------------|-----------------------|
| DRAWN BY:<br>W.W.S.  | CHECKED BY:<br>W.W.S. |
| PLOT:<br>1=2         | DATE:<br>02/08/21     |
| DATE                 |                       |
| BY                   |                       |
| REVISION DESCRIPTION |                       |
| NO.                  |                       |

JOB INFORMATION:  
**KAWNEER COMPANY, INC.**  
 555 GUTHRIDGE COURT  
 NORCROSS, GA 30092  
 770-449-5555

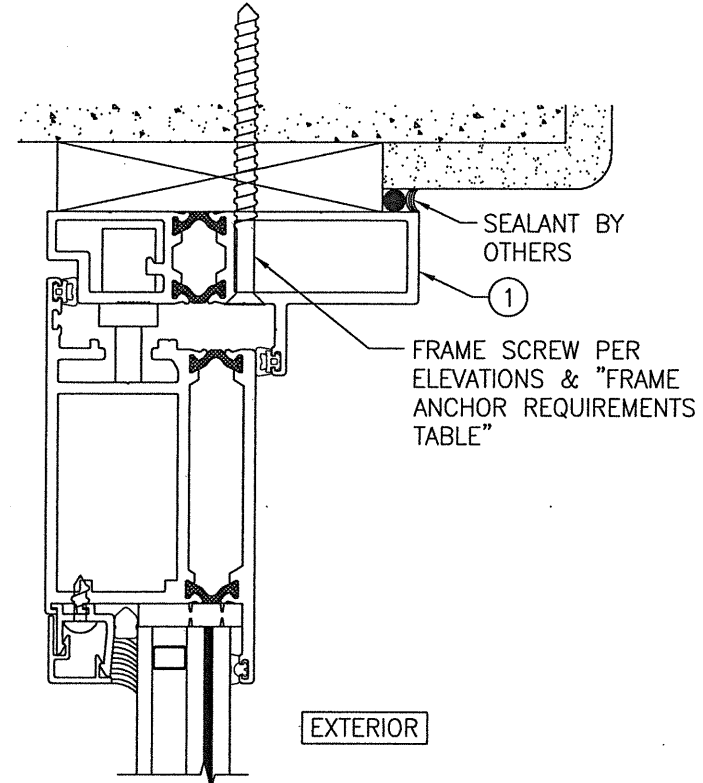
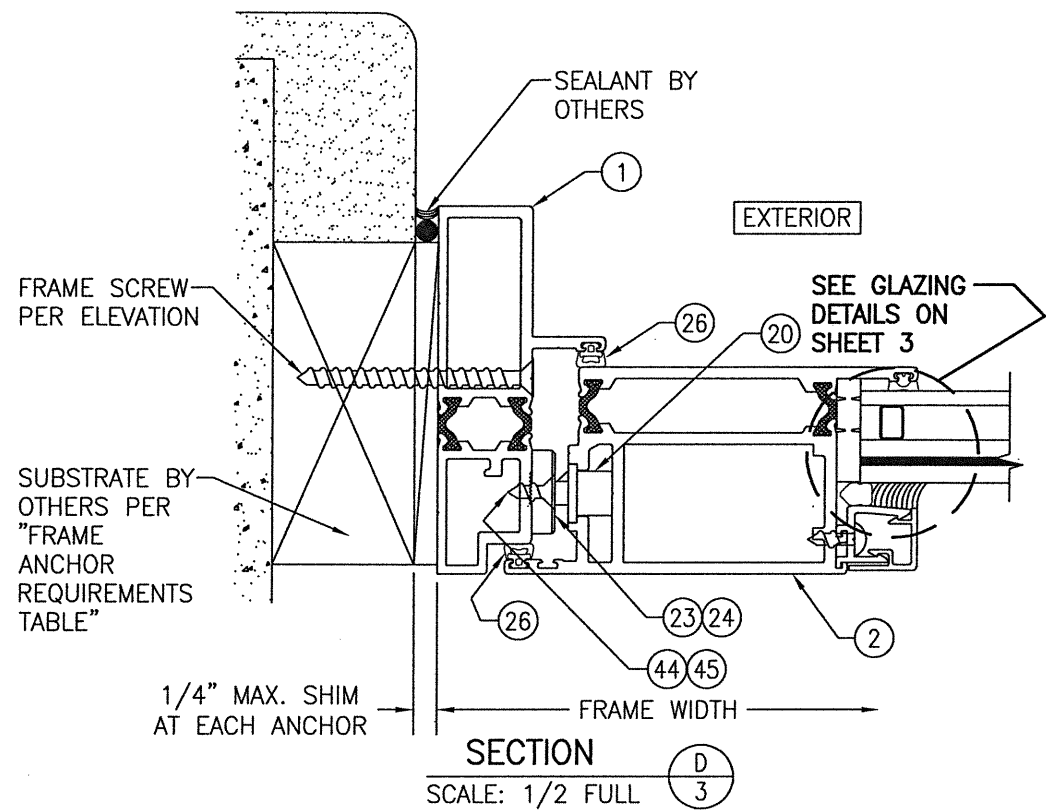
DRAWING TITLE  
**2000T TERRACE SMALL & LARGE MISSILE IMPACT IN-SWING DOOR**

CONSULTANTS  
**W. W. SCHAEFER ENGINEERING & CONSULTING, P.A. (REG. NO. F-14980)**  
 7480 150TH COURT NORTH  
 PALM BEACH GARDENS, FL 33418  
 PHONE: 561-744-3424

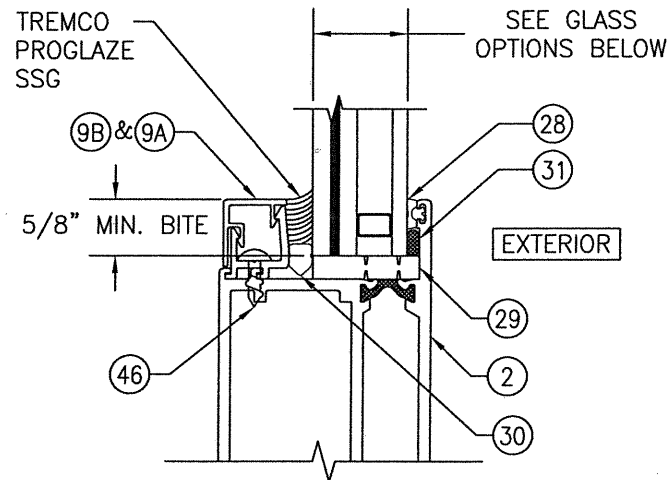
CERTIFICATION  
**FEB 08 2021**  
 WARREN W. SCHAEFER, P.E.  
 P.E. NO. 113497

DRAWING NO.  
**1679T**

REV.  
 SHEET NO.  
**2 OF 4**

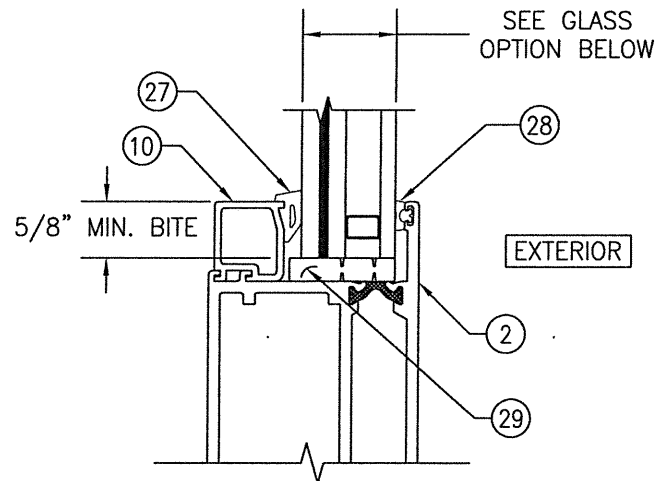


**OPTIONAL DIRECT MOUNT DETAIL TO SUBSTRATE WITH SPACER**  
 (HEAD SECTION SHOWN; SILL & SIDES ARE INSTALLED THE SAME)  
 (FOR DETAIL NOT SHOWN, SEE OTHER SECTIONS)



**GLAZING DETAIL 1**  
**(L.M.I. GLASS OPTIONS 1-5)**

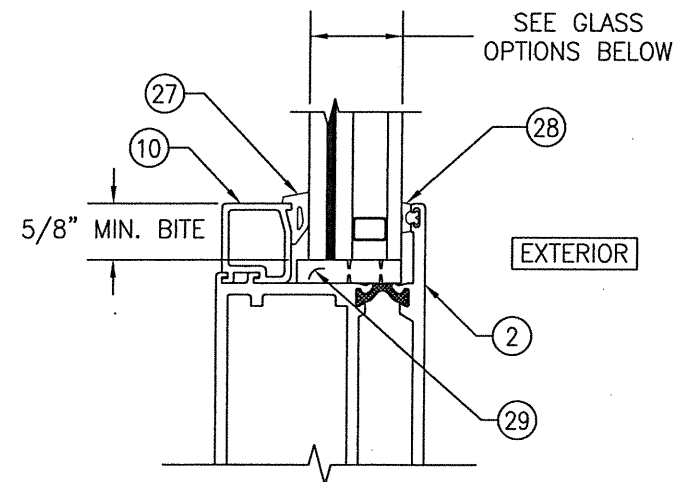
- GLASS OPTION 1: 1" LAMINATED I.G. (3/16" H.S./0.075" EASTMAN CHEM. CO. SAFLEX STORM/3/16" H.S. INTERIOR; 3/8" SPACER; 3/16" TEMPERED EXTERIOR)
- GLASS OPTION 2: 1" LAMINATED I.G. (3/16" H.S./0.090" KURARAY SG/3/16" H.S. INTERIOR; 3/8" SPACER; 3/16" TEMPERED EXTERIOR)
- GLASS OPTION 3: 1" LAMINATED I.G. (3/16" H.S./0.100" EASTMAN CHEM. CO. SAFLEX HP/3/16" H.S. INTERIOR; 3/8" SPACER; 3/16" TEMPERED EXTERIOR)
- GLASS OPTION 4: 1" LAMINATED I.G. (3/16" H.S./0.090" KURARAY BUTACITE PVB/3/16" H.S. INTERIOR; 3/8" SPACER; 3/16" TEMPERED EXTERIOR)
- GLASS OPTION 5: 1" LAMINATED I.G. (3/16" H.S./0.090" EASTMAN CHEM. CO. SAFLEX/3/16" H.S. INTERIOR; 3/8" SPACER; 3/16" TEMPERED EXTERIOR)



**GLAZING DETAIL 2**  
**(L.M.I. GLASS OPTION 6)**

- GLASS OPTION 6: 1" LAMINATED I.G. (3/16" H.S./0.090" KURARAY SG/3/16" H.S. INTERIOR; 3/8" SPACER; 3/16" TEMPERED EXTERIOR)

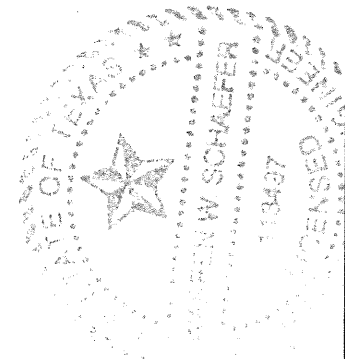
**L.M.I. = LARGE MISSILE IMPACT**  
**S.M.I. = SMALL MISSILE IMPACT**



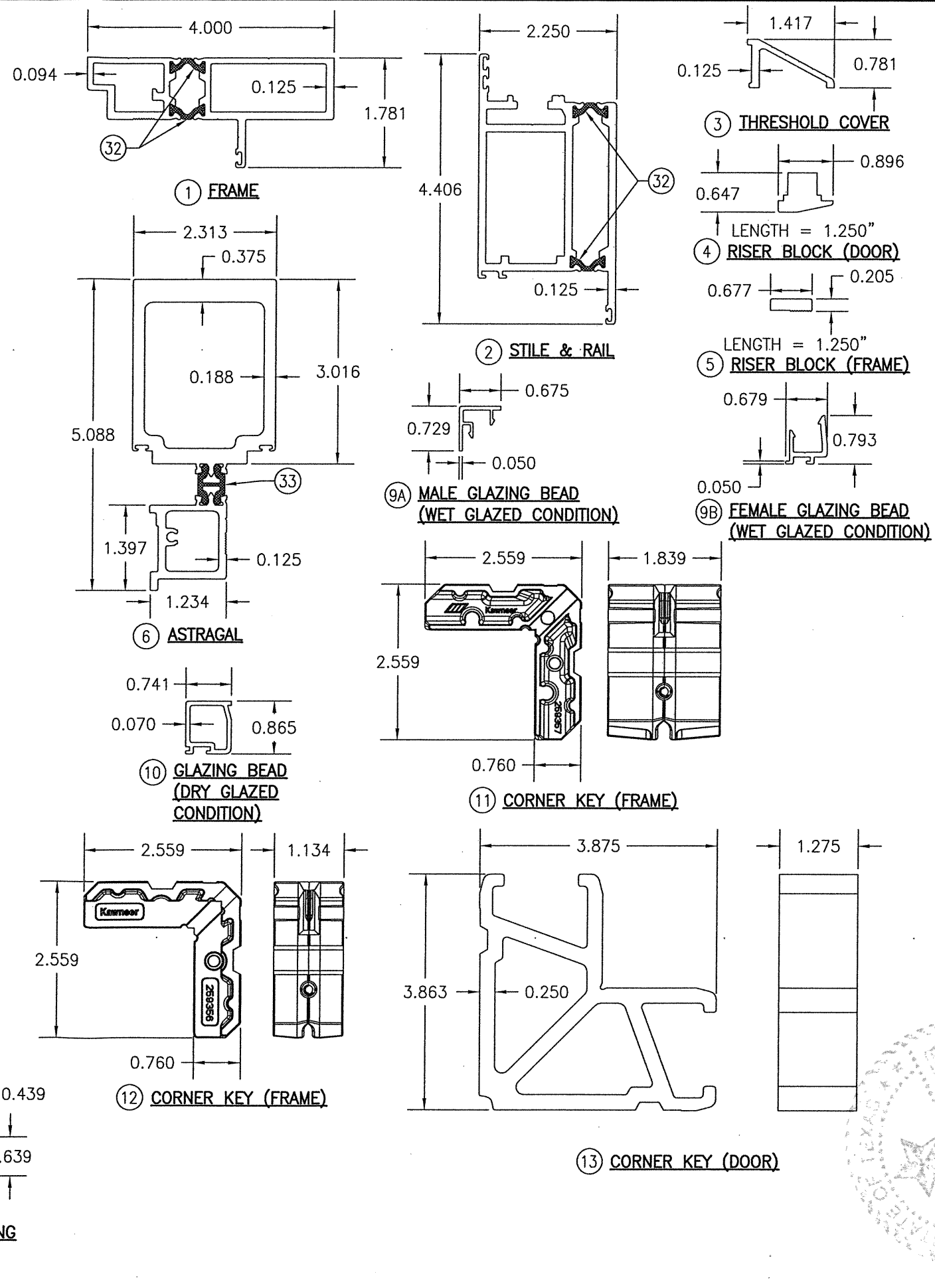
**GLAZING DETAIL 3**  
**(S.M.I. GLASS OPTIONS 7 & 8)**

- GLASS OPTION 7: 1" LAMINATED I.G. (3/16" H.S./0.060" KURARAY BUTACITE PVB/3/16" H.S. INTERIOR; 3/8" SPACER; 3/16" TEMPERED EXTERIOR)
- GLASS OPTION 8: 1" LAMINATED I.G. (3/16" H.S./0.060" EASTMAN CHEM. CO. SAFLEX/3/16" H.S. INTERIOR; 3/8" SPACER; 3/16" TEMPERED EXTERIOR)

|   |                       |   |                   |
|---|-----------------------|---|-------------------|
| DRAWN BY:<br>W.W.S.   | CHECKED BY:<br>W.W.S. | PLOT:<br>1=2  | DATE:<br>02/08/21 |
| NO.   | REVISION DESCRIPTION  | BY  | DATE              |
|   |                       |   |                   |
| DRAWING TITLE<br><b>2000T TERRACE SMALL &amp; LARGE MISSILE IMPACT IN-SWING DOOR</b>  |                       |   |                   |
| CONSULTANTS<br><b>W. W. SCHAEFER ENGINEERING &amp; CONSULTING, P.A. (REG. NO. F-14980)</b><br>7480 150TH COURT NORTH<br>PALM BEACH GARDENS, FL 33418<br>PHONE: 561-744-3424 |                       | JOB INFORMATION:<br><b>KAWNEER COMPANY, INC.</b><br>555 GUTHRIDGE COURT<br>NORCROSS, GA 30092<br>770-449-5555 |                   |
| CERTIFICATION<br><b>FEB 08 2021</b>   |                       |   |                   |
| WARREN W. SCHAEFER<br>P.E. NO. 113497   |                       | DRAWING NO.<br><b>1679T</b>   |                   |
| SHEET NO.<br><b>3</b> OF <b>4</b>   |                       | REV.  |                   |



| ITEM #                      | ITEM DESCRIPTION                           | MANUFACTURER/NOTES                           |
|-----------------------------|--|--|
| <b>PARTS</b>                |  |  |
| 1                           | FRAME                                      | 6063-T6 ALUMINUM                             |
| 2                           | STILE & RAIL                               | 6063-T6 ALUMINUM                             |
| 3                           | THRESHOLD COVER                            | 6063-T6 ALUMINUM                             |
| 4                           | RISER BLOCK (DOOR)                         | NYLON/3 PER DOOR PANEL                       |
| 5                           | RISER BLOCK (FRAME)                        | NYLON/3 PER DOOR PANEL                       |
| 6                           | ASTRAGAL                                   | 6063-T6 ALUMINUM                             |
| 9A                          | MALE GLAZING BEAD (WET GLAZED CONDITION)   | 6063-T6 ALUMINUM                             |
| 9B                          | FEMALE GLAZING BEAD (WET GLAZED CONDITION) | 6063-T6 ALUMINUM                             |
| 10                          | GLAZING BEAD (DRY GLAZED CONDITION)        | 6063-T6 ALUMINUM                             |
| 11                          | CORNER KEY (FRAME)                         | CAST ALUMINUM                                |
| 12                          | CORNER KEY (FRAME)                         | CAST ALUMINUM                                |
| 13                          | CORNER KEY (DOOR)                          | 6105-T5 ALUMINUM                             |
| <b>HARDWARE</b>             |  |  |
| 18                          | LIMIT STOP                                 | ADVANTAGE MFG. #628                          |
| 19                          | HINGE                                      | ADVANTAGE MFG. #1113HCA 6061-T6 ALUMINUM     |
| 20                          | 5 POINT MULTI-POINT LOCK SYSTEM            | HOPPE HLS 7000                               |
| 21                          | 2 POINT MULTI-POINT LOCK SYSTEM            | HOPPE HLS 7000                               |
| 22                          | SHOOTBOLT SLEEVE                           | ADVANTAGE MFG. #7723                         |
| 23                          | SWINGHOOK STRIKE                           | ADVANTAGE MFG. #1130                         |
| 24                          | LATCH/DEADBOLT STRIKE                      | ADVANTAGE MFG. #1131                         |
| 25                          | HANDLE                                     | AS REQUIRED TO OPERATE LOCK SYSTEM           |
| <b>SEALS &amp; SEALANTS</b> |  |  |
| 26                          | BULB GASKET                                | RENKO #R2008B EPDM (DUROMETER = 80 +/-5)     |
| 27                          | INTERIOR GLAZING WEDGE GASKET              | TREMCO #TR-3234-E EPDM (DUROMETER = 70 +/-5) |
| 28                          | EXTERIOR GLAZING GASKET                    | EPG #6508-00-00 EPDM (DUROMETER = 80 +/-5)   |
| 29                          | SETTING BLOCK                              | TRELLEBORG EPDM                              |
| 30                          | DRIVE-IN WEDGE GASKET                      | TREMCO #TR-336W SCR-900 SILICONE RUBBER      |
| 32                          | DEBRIDGING/THERMAL BREAK                   | TECATHERM-66-GF                              |
| 33                          | DEBRIDGING/THERMAL BREAK                   | TECATHERM-66-GF                              |
| <b>FASTENERS</b>            |  |  |
| 35                          | NO. 10 X 3/4" PHTF SCREW 300 S.S.          | WITHIN 6" FROM CORNERS & 12" MAX. O.C.       |
| 36                          | NO. 10-24 X 3/4" FHMS 300 S.S.             | 4 PER LIMIT STOP INTO FRAME                  |
| 37                          | NO. 10 X 1 5/8" FHTF SCREW 300 S.S.        | 4 PER LIMIT STOP INTO DOOR                   |
| 38                          | NO. 10 X 1 5/8" FHTF SCREW 300 S.S.        | 1 PER RISER BLOCK                            |
| 39                          | NO. 10 X 1/2" FHTF SCREW 300 S.S.          | 1 PER RISER BLOCK                            |
| 40                          | NO. 12-24 X 3/4" PHMS 300 S.S.             | 3 PER HINGE INTO FRAME                       |
| 41                          | NO. 10 X 3/4" PHTF SCREW 300 S.S.          | 3 PER HINGE INTO DOOR                        |
| 42                          | NO. 10 X 2" PHTF SCREW 300 S.S.            | WITHIN 5" FROM ENDS & 12" MAX. O.C.          |
| 43                          | NO. 10 X 1/2" FHTF SCREW 300 S.S.          | 1 PER SHOOTBOLT SLEEVE                       |
| 44                          | NO. 10 X 1/2" FHTF SCREW 300 S.S.          | 2 PER SWINGHOOK STRIKE                       |
| 45                          | NO. 10 X 1/2" FHTF SCREW 300 S.S.          | 3 PER LATCH/DEADBOLT STRIKE                  |
| 46                          | NO. 8 X 1/2" PHTF SCREW 300 S.S.           | WITHIN 3" FROM CORNERS & 9" MAX. O.C.        |



|   |                       |
|---|-----------------------|
| DRAWN BY:<br>W.W.S.   | CHECKED BY:<br>W.W.S. |
| PLOT:<br>1=2  | DATE:<br>02/08/21     |
| NO.   | REVISION DESCRIPTION  |
| DATE  | BY                    |
| JOB INFORMATION:  |                       |
| 2000T TERRACE SMALL & LARGE MISSILE IMPACT IN-SWING DOOR  |                       |
| KAWNEER COMPANY, INC.<br>555 GUTHRIDGE COURT<br>NORCROSS, GA 30092<br>770-449-5555  |                       |
| CONSULTANTS:<br>W. W. SCHAEFER ENGINEERING & CONSULTING, P.A. (REG. NO. F-14980)<br>7480 150TH COURT NORTH<br>PALM BEACH GARDENS, FL 33418<br>PHONE: 561-744-3424 |                       |
| DRAWING TITLE   |                       |
| 2000T TERRACE SMALL & LARGE MISSILE IMPACT IN-SWING DOOR  |                       |
| CERTIFICATION   |                       |
| FEB 08 2021   |                       |
| WARREN W. SCHAEFER, P.E.<br>P.E. NO. 113497   |                       |
| DRAWING NO.<br>1679T  | REV.                  |
| SHEET NO.<br>4  | OF<br>4               |