

GENERAL NOTES:

- THIS PRODUCT HAS BEEN TESTED, ANALYZED & APPROVED FOR DESIGN PRESSURES NOT TO EXCEED THOSE SHOWN IN THE "ALLOWABLE DESIGN PRESSURE TABLE(S)".
- OPENINGS, BUCKING & BUCKING FASTENERS MUST BE PROPERLY DESIGNED & INSTALLED TO TRANSFER WIND LOADS TO THE STRUCTURE.
- ALL HARDWARE & FASTENERS SHALL BE IN ACCORDANCE WITH THESE DRAWINGS & SHALL NOT VARY UNLESS SPECIFICALLY MENTIONED ON THE DRAWINGS. SPECIFIED ANCHOR EMBED TO BASE MATERIAL SHALL BE BEYOND WALL FINISH OR STUCCO.
- THE DETAILS & SPECIFICATIONS SHOWN HEREIN REPRESENT THE PRODUCTS TESTED & PROPOSED FOR WATER, AIR, IMPACT, CYCLIC & UNIFORM STATIC AIR PRESSURE TESTING IN CONFORMANCE WITH 2018 IBC REFERENCED STANDARDS ASTM E330, E283, E331, E1886 & E1996 & AAMA 1304 FOR LARGE & SMALL MISSILE IMPACT PRODUCTS. ALL TESTING OF THIS PRODUCT TO STANDARDS LESS CURRENT THAN THOSE SPECIFIED IN THE 2018 IBC HAS BEEN DETERMINED EQUIVALENT TO THE MORE CURRENT VERSIONS OF THOSE STANDARDS REFERENCED IN THE 2018 IBC.
- THIS PRODUCT HAS BEEN DESIGNED IN ACCORDANCE WITH AND MEETS THE REQUIREMENTS OF THE 2018 INTERNATIONAL BUILDING CODE (IBC) & IS BOTH LARGE & SMALL MISSILE IMPACT RATED.
- WHEN GLAZED FOR SMALL MISSILE IMPACT, THIS PRODUCT MAY NOT BE INSTALLED AT ELEVATIONS BELOW 30 FT. ABOVE GRADE OR AT ANY CODE DESIGNATED LARGE MISSILE IMPACT LOCATION WITHOUT AN APPROVED SHUTTER.
- WHEN LARGE MISSILE IMPACT GLAZED, IMPACT SHUTTERS ARE NOT REQUIRED WITH THIS PRODUCT.
- ALL ANCHORS SECURING PRODUCT FRAMES TO PRESSURE TREATED BUCKS OR WOOD FRAMING SHALL BE CAPABLE OF RESISTING CORROSION CAUSED BY THE PRESSURE TREATING CHEMICALS IN THE WOOD.
- DETERMINE THE POSITIVE & NEGATIVE DESIGN LOADS TO USE WHEN REFERENCING THESE DOCUMENTS IN ACCORDANCE WITH THE GOVERNING CODE AND GOVERNING WIND VELOCITY. FOR WIND LOAD CALCULATIONS IN ACCORDANCE WITH THE INTERNATIONAL BUILDING CODE, A DIRECTIONALITY FACTOR OF $KD = 0.85$ MAY BE APPLIED PER THE ASCE-7 STANDARD.
- MATERIALS, INCLUDING BUT NOT LIMITED TO STEEL SCREWS, THAT COME INTO CONTACT WITH OTHER DISSIMILAR MATERIALS SHALL BE SEPARATED OR COATED AS REQUIRED TO AVOID CORROSION OF EITHER MATERIAL.
- TO THE BEST OF OUR KNOWLEDGE, THE PRODUCT SHOWN HEREIN ARE QUALITY ASSURED BY AN APPROVED CERTIFICATION/QA ENTITY & SHALL BE LABELED IN ACCORDANCE WITH APPLICABLE STANDARDS. THESE DRAWINGS SHOW ALL APPLICABLE ELEVATION, COMBINATION, INSTALLATION & COMPARATIVE ANALYSIS CONDITIONS AS DETERMINED THROUGH TESTING & ENGINEERING RATIONAL ANALYSIS. PRODUCT ASSEMBLY SHALL BE IN ACCORDANCE WITH THESE DRAWINGS, THE MANUFACTURER'S QUALITY ASSURANCE SPECIFICATIONS & TESTING REPORTS.
- CERTIFICATION OF THIS PRODUCT SHALL BE CONSIDERED VOID IF THEY ARE INSTALLED WITHOUT A BUILDING PERMIT FROM THE APPLICABLE LOCAL BUILDING DEPARTMENT OR IF THEY ARE INSTALLED BY ANYONE OTHER THAN A LICENSED CONTRACTOR EXPERIENCED WITH INSTALLATIONS OF THIS TYPE OF PRODUCT.

EVALUATION OF THIS PRODUCT IS BASED ON APPLICABLE STANDARDS AND/OR INFORMATION & RESULTS FROM APPLICABLE TEST REPORTS. THE BUILDING CODE VERSION CONSIDERED WITH THIS EVALUATION WAS THAT IN FORCE AT THE TIME OF THE EVALUATION. IN THE EVENT OF CODE VERSION CHANGES/UPDATES OR IN THE EVENT THAT NEW OR ADDITIONAL TESTING IS COMPLETED ON THIS PRODUCT, PRIOR TO STATING CODE COMPLIANCE, THE MANUFACTURER SHALL CONFIRM WITH THE EVALUATION ENGINEER OF RECORD THAT EVERYTHING SPECIFIED HERE-IN IS CURRENT WITH ALL CURRENT TESTING, CODES AND APPLICABLE STANDARDS.

CORNER CONSTRUCTION:

FRAME ASSEMBLY: HORIZONTAL MEMBERS RUN THROUGH WITH VERTICAL MEMBERS RUNNING BETWEEN THE HORIZONTALS. BEFORE ASSEMBLY, SEALANT IS APPLIED TO THE VERTICAL MEMBER ENDS. THE VERTICAL MEMBER ENDS ARE THEN BUTTED TO THE HORIZONTAL MEMBERS, SCREW HOLES ARE FILLED WITH SEALANT AND THE MEMBERS ARE JOINED WITH #12X2" HWH THREAD FORMING SCREWS (QUANTITIES VARY WITH LOCATION & MATCH THE QUANTITY OF AVAILABLE SCREW SPLINES). ONCE ASSEMBLED, SEALANT IS TOOLED AND ALL VOIDS FILLED. END DAMS ARE THEN PLACED TO CLOSE OFF THE HORIZONTAL MEMBER ENDS.

SUB-SASH & SLIDING PANEL ASSEMBLY: VERTICAL MEMBERS RUN THROUGH WITH HORIZONTAL MEMBERS RUNNING BETWEEN THE VERTICALS. SEALANT IS APPLIED TO THE HORIZONTAL ENDS AND GASKET RACEWAYS AND THE MEMBERS ARE JOINED WITH NO. 12 X 2" HWH THREAD FORMING SCREWS (QUANTITIES VARY WITH LOCATION & MATCH THE QUANTITY OF AVAILABLE SCREW SPLINES).

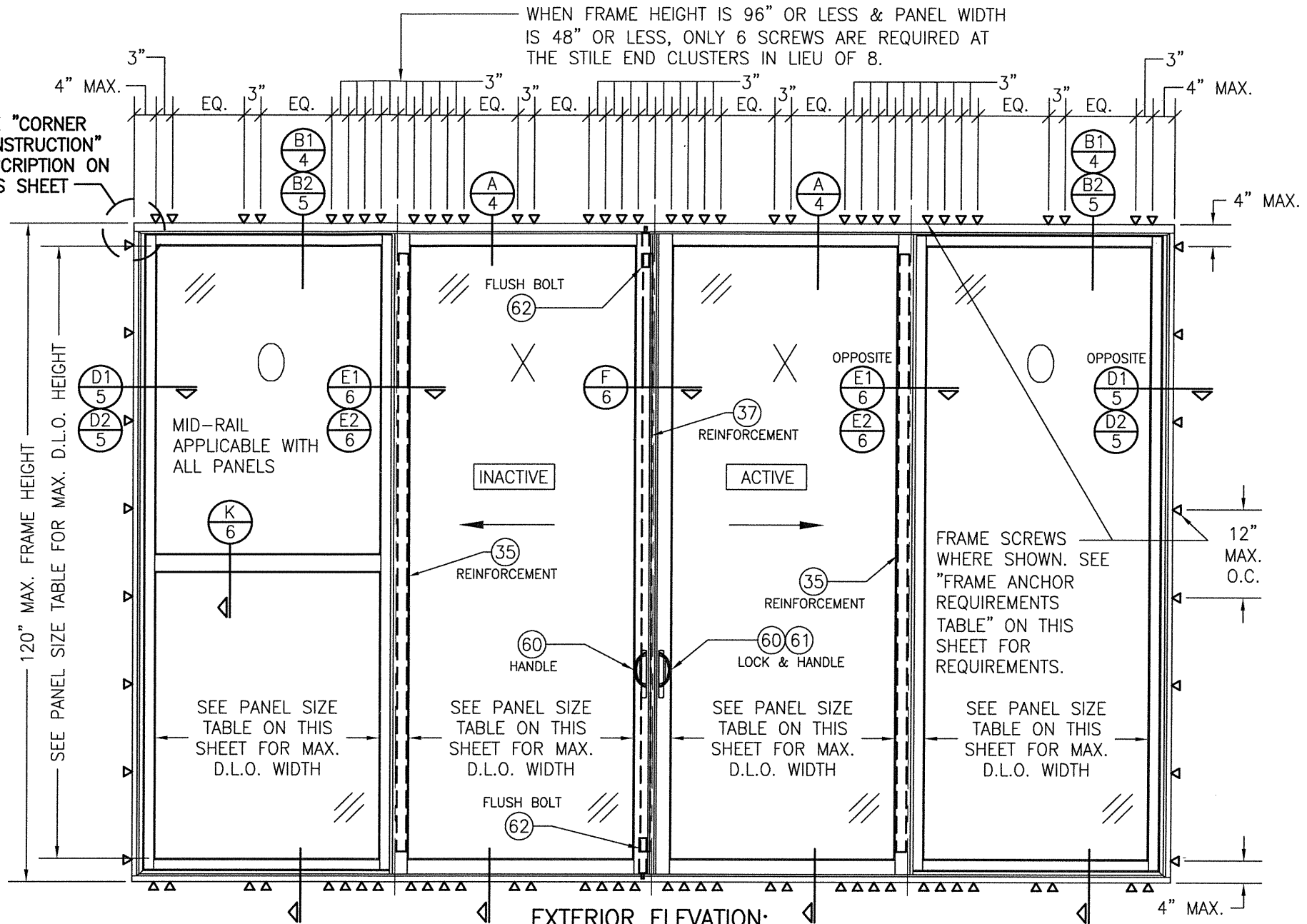
FRAME ANCHOR REQUIREMENTS TABLE

FRAME & RECEPTOR SCREWS

OPENING TYPE (SUBSTRATE)	FRAME TO OPENING FASTENER TYPE	MINIMUM EMBED	MINIMUM EDGE DIST.
MIN. 2X4 WOOD FRAME OR BUCK (MIN. GR. 3 & G=0.55)	NO. 14 SMS OR WOOD SCREW	1 1/4"	1"
MIN. 16 GA. 50 KSI METAL STUD	1/4" GR. 5 SELF TAP/DRILL SCREW	FULL	1/2"
MIN. 1/8" THK A36 STEEL	1/4" GR. 5 SELF TAP/DRILL SCREW	FULL	1/2"
MIN. 0.100" THK 6063-T5 ALUM.	1/4" GR. 5 SELF TAP/DRILL SCREW	FULL	1/2"
MIN. C-90 CONCR. FILLED CMU	(1) (2) 1/4" CONCRETE SCREW	1 3/4"	2 1/2"
MIN. 3000 PSI CONCRETE	(1) 1/4" CONCRETE SCREW	1 3/4"	2"

- (1) CONCRETE SCREWS SHALL BE ELCO ULTRACONS (C.S.), ELCO CRETE-FLEX (S.S.), ITW RAMSET/RED HEAD TAPCONS (C.S. OR S.S.) OR HILTI KWIK-CON II (C.S OR S.S.).
 (2) CMU OPENINGS MUST HAVE REINFORCED CONCRETE FILLED CELLS AT THE SIDES.

SEE "CORNER CONSTRUCTION" DESCRIPTION ON THIS SHEET



EXTERIOR ELEVATION:

4-PANEL OXXO DOOR WITHOUT HEAD RECEPTOR

SCALE: 1/2" = 1'-0"

ELEVATION NOTES:

- FIXED "O" PANELS SHOWN AS SASH GLAZED. DIRECT GLAZING TO FRAME ALSO APPLIES PER THE SECTIONS.
- FOR HEAD RECEPTOR APPLICATION, SEE ELEVATION ON SHEET 3.
- FOR APPLICABLE PANEL CONDITIONS AND "O"/"X" COMBINATIONS, SEE NOTATION ON SHEET 2.

ALLOWABLE DESIGN PRESSURE (ALL UNITS)

+/-135 PSF

ALLOWABLE PANEL SIZE TABLE (SASH GLAZED PANELS)

MAXIMUM D.L.O. WIDTH (IN.)	MAXIMUM D.L.O. HEIGHT (IN.)
53 15/16	87 1/2
51	88 1/2
48	94 1/16
45	100 5/16
42	107 1/2
40 1/2	111 1/2

ALLOWABLE PANEL SIZE TABLE (DIRECT GLAZED PANELS)

MAXIMUM D.L.O. WIDTH (IN.)	MAXIMUM D.L.O. HEIGHT (IN.)
57 15/16	91 1/2
54	98 1/8
51	103 15/16
48	110 7/16
44 1/2	115 1/2

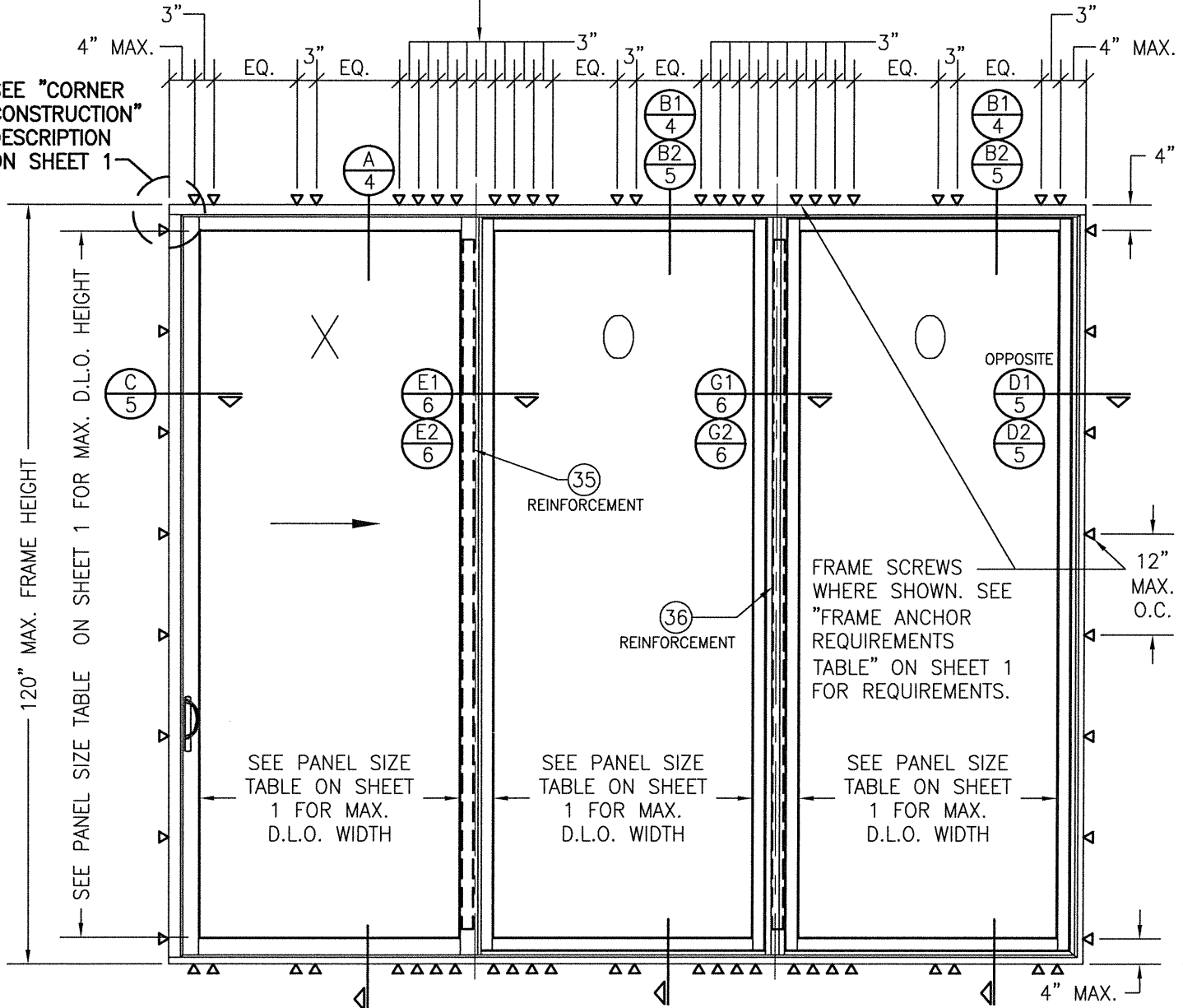
THESE DRAWINGS ARE APPLICABLE ONLY TO THE PRODUCT SPECIFIED. THEY MAY NOT BE USED FOR THE ASSEMBLY AND/OR INSTALLATION OF ANY OTHER PRODUCT NOR MAY THEY BE USED FOR RATIONAL AND/OR LOCAL APPROVAL OF ANY PRODUCT NOT PRODUCED BY THE MANUFACTURER STATED ON THESE DRAWINGS.

DRAWN BY: W.W.S.	CHECKED BY: W.W.S.
PLOT: 1=24	DATE: 02/08/21
DATE	BY
REVISION DESCRIPTION	NO.
DRAWING TITLE AA-3200-IR HIGH PRESSURE SLIDING GLASS DOORS (LMI & SMI)	
JOB INFORMATION: KAWNEER COMPANY, INC. 555 GUTHRIE COURT NORCROSS, GA 30092 770-449-5555	
CONSULTANTS: W. W. SCHAEFER ENGINEERING & CONSULTING, P.A. (REG. NO. F-14980) 7480 150TH COURT NORTH 33418 PALM BEACH GARDENS, FL 33418 PHONE: 561-744-3424	
CERTIFICATION FEB 09 2021	WARREN W. SCHAEFER, P.E. P.E. NO. 113487
DRAWING NO. 1705T	REV.
SHEET NO. 1	OF 10

WHEN FRAME HEIGHT IS 96" OR LESS & PANEL WIDTH IS 48" OR LESS, ONLY 6 SCREWS ARE REQUIRED AT THE STILE END CLUSTERS IN LIEU OF 8.

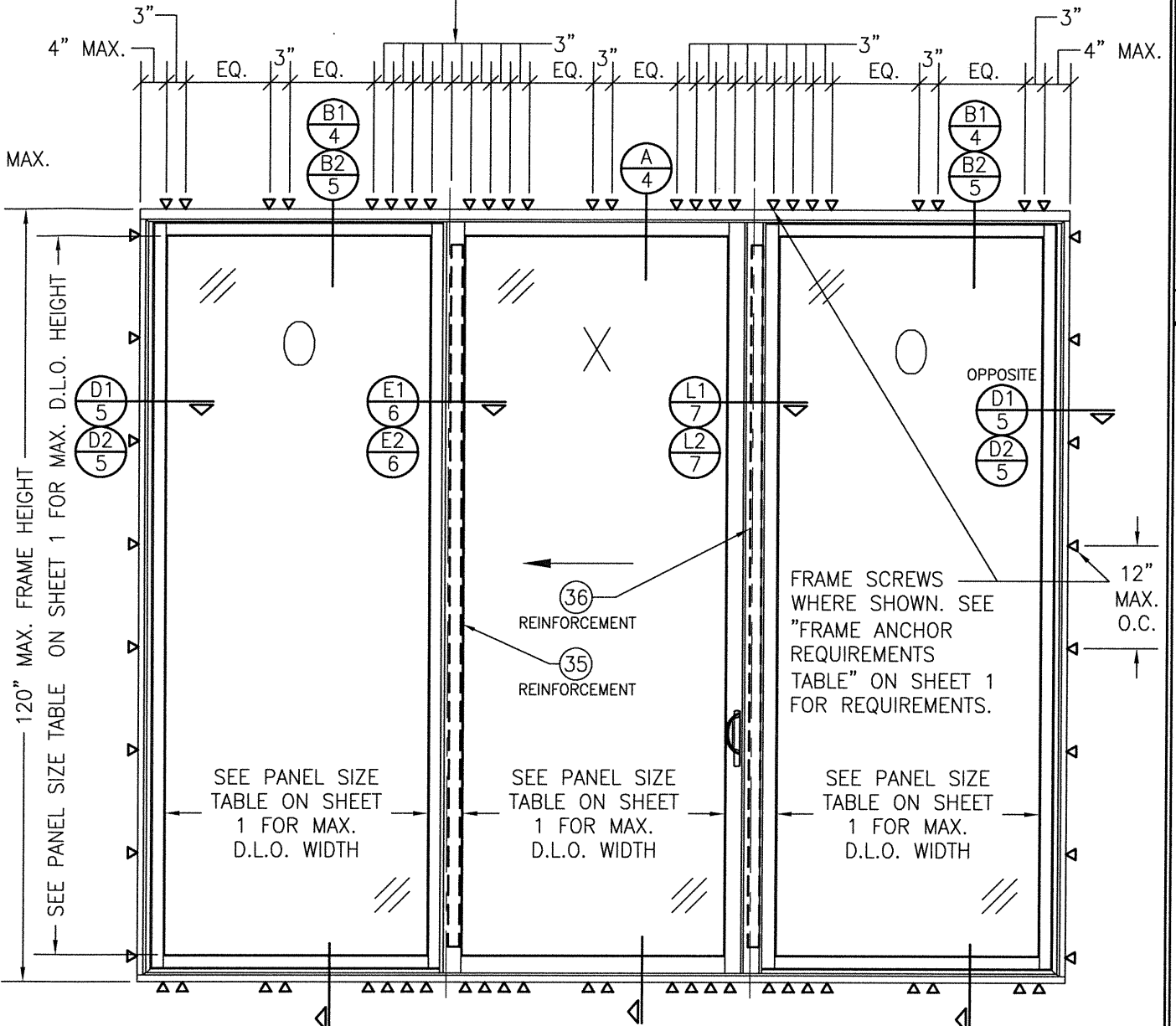
WHEN FRAME HEIGHT IS 96" OR LESS & PANEL WIDTH IS 48" OR LESS, ONLY 6 SCREWS ARE REQUIRED AT THE STILE END CLUSTERS IN LIEU OF 8.

SEE "CORNER CONSTRUCTION" DESCRIPTION ON SHEET 1



EXTERIOR ELEVATION:
3-PANEL XOO DOOR WITHOUT HEAD RECEPTOR

SCALE: 1/2" = 1'-0"



EXTERIOR ELEVATION:
3-PANEL OXO DOOR WITHOUT HEAD RECEPTOR

SCALE: 1/2" = 1'-0"

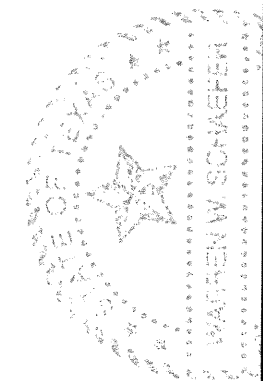
ELEVATION NOTES:

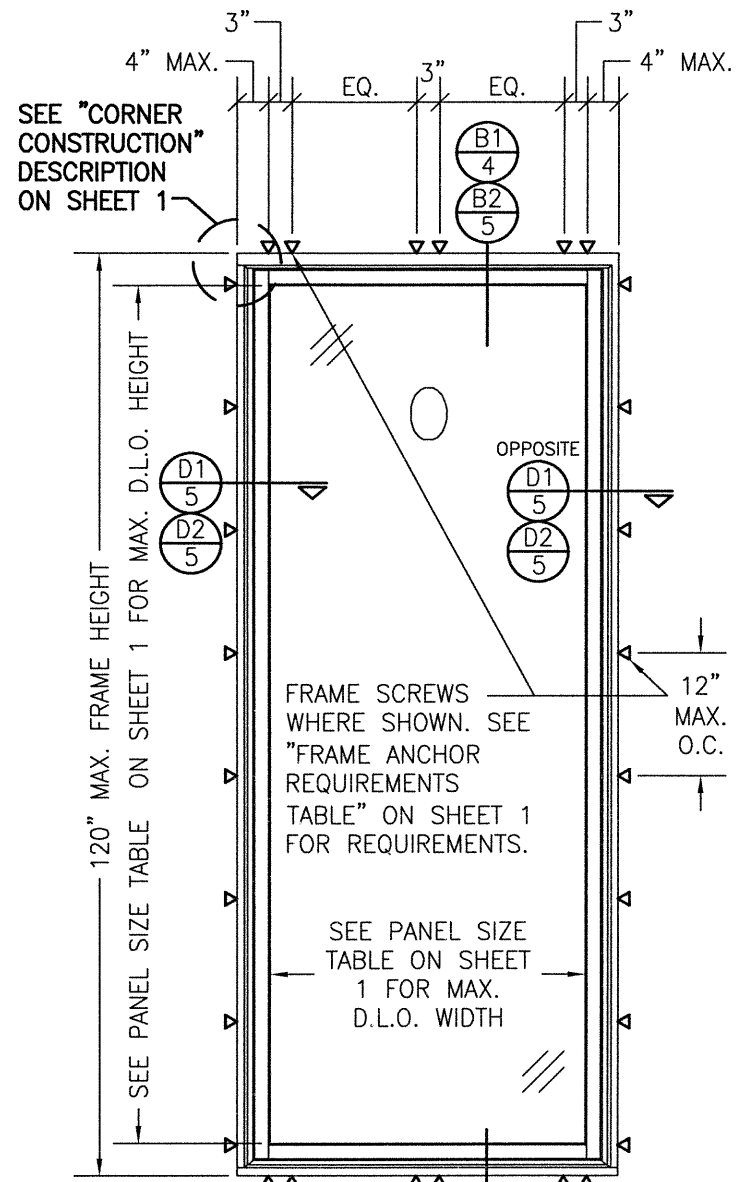
1. FIXED "O" PANELS SHOWN AS SASH GLAZED. DIRECT GLAZING TO FRAME ALSO APPLIES PER THE SECTIONS.
2. FOR HEAD RECEPTOR APPLICATION, SEE "XOO" ELEVATION ON SHEET 3.
3. FOR APPLICABLE PANEL CONDITIONS AND "O"/"X" COMBINATIONS, SEE NOTATION ON THIS SHEET.

APPLICABLE PANEL COMBINATIONS:

O, OX, XO, XX, OO, OXO, XOO, OOX, XOX, OOO, OXXO, OOOO & XOOX

DRAWN BY: W.W.S.	CHECKED BY: W.W.S.
PLOT: 1=24	DATE: 02/08/21
DATE	
BY	
REVISION DESCRIPTION	
NO.	
DRAWING TITLE AA-3200-IR HIGH PRESSURE SLIDING GLASS DOORS (LMI & SMI)	
JOB INFORMATION: KAWNEER COMPANY, INC. 555 GUTHRIDGE COURT NORCROSS, GA 30092 770-449-5555	
CONSULTANTS W. W. SCHAEFER ENGINEERING & CONSULTING, P.A. (REG. NO. F-14980) 7480 150TH COURT NORTH PALM BEACH GARDENS, FL 33418 PHONE: 561-744-3424	
CERTIFICATION	FEB 09 2021
WARREN W. SCHAEFER P.E. NO. 113497	
DRAWING NO. 1705T	REV.
SHEET NO. 2 OF 10	



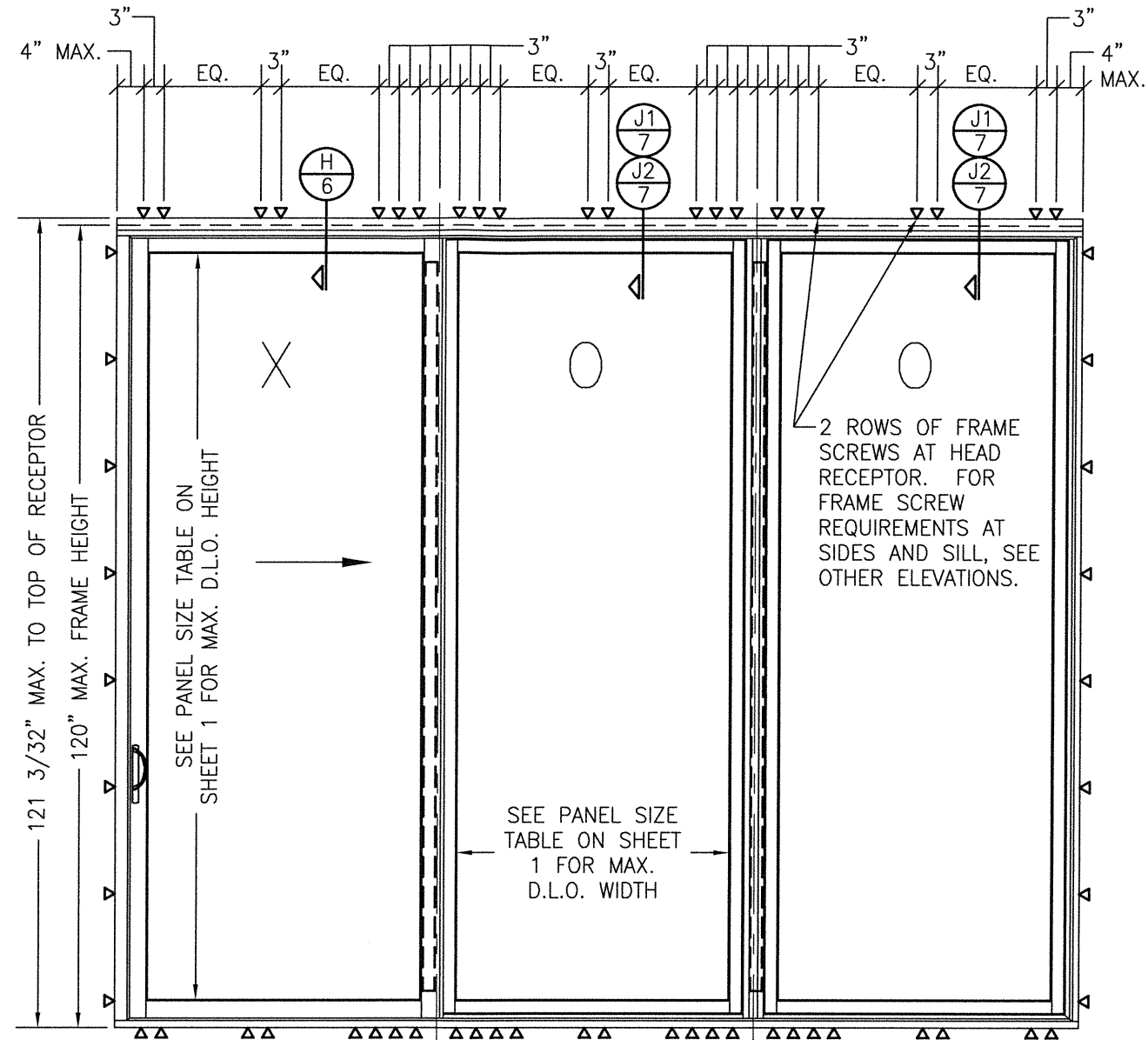


**EXTERIOR ELEVATION:
SINGLE-PANEL O DOOR WITHOUT HEAD RECEPTOR**

SCALE: 1/2" = 1'-0"

ELEVATION NOTES:

1. FIXED "O" PANELS SHOWN AS SASH GLAZED. DIRECT GLAZING TO FRAME ALSO APPLIES PER THE SECTIONS.
2. FOR HEAD RECEPTOR APPLICATION, SEE "XOO" ELEVATION ON THIS SHEET.
3. FOR APPLICABLE PANEL CONDITIONS AND "O"/"X" COMBINATIONS, SEE NOTATION ON SHEET 2.



**EXTERIOR ELEVATION:
3-PANEL XOO DOOR WITH HEAD RECEPTOR**

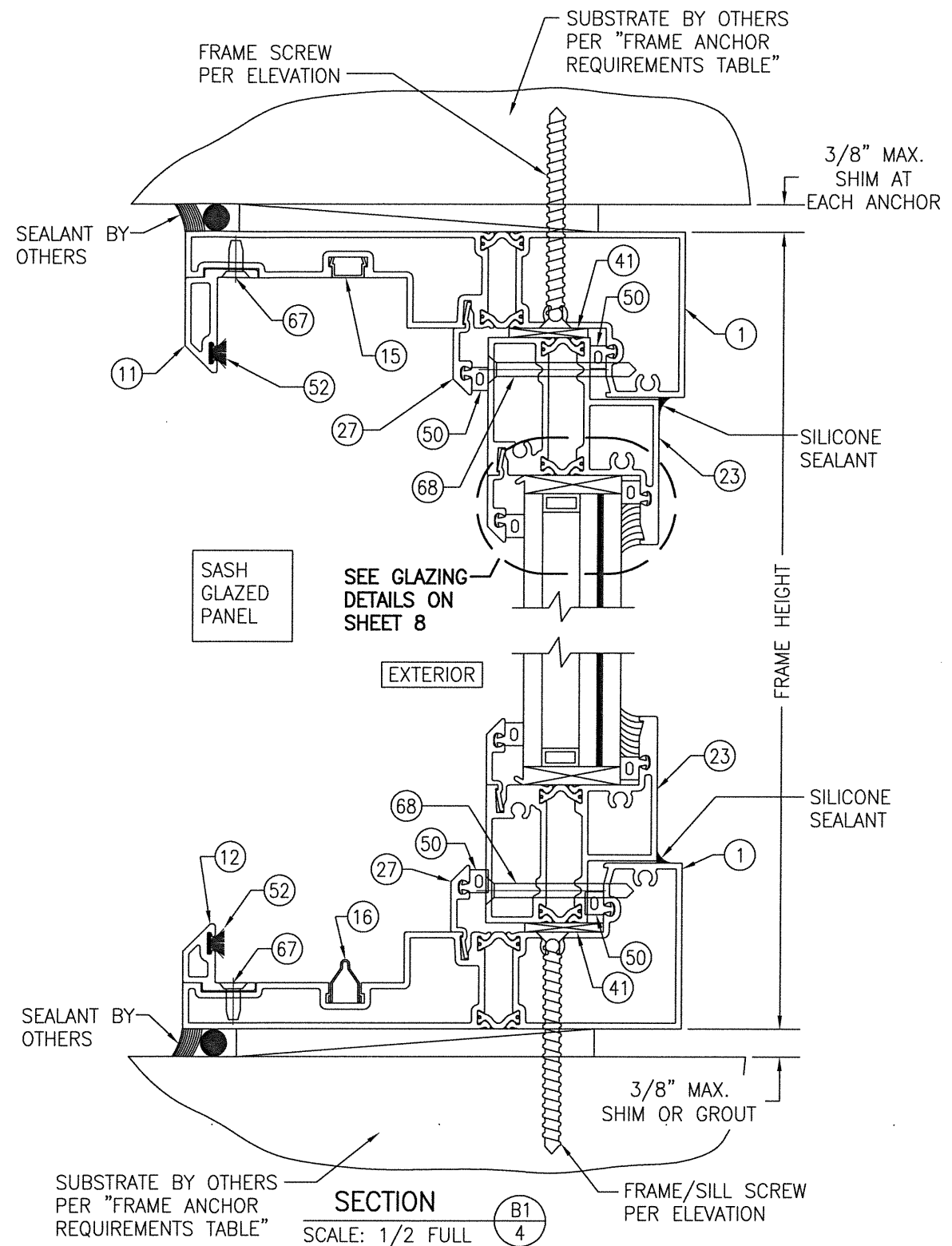
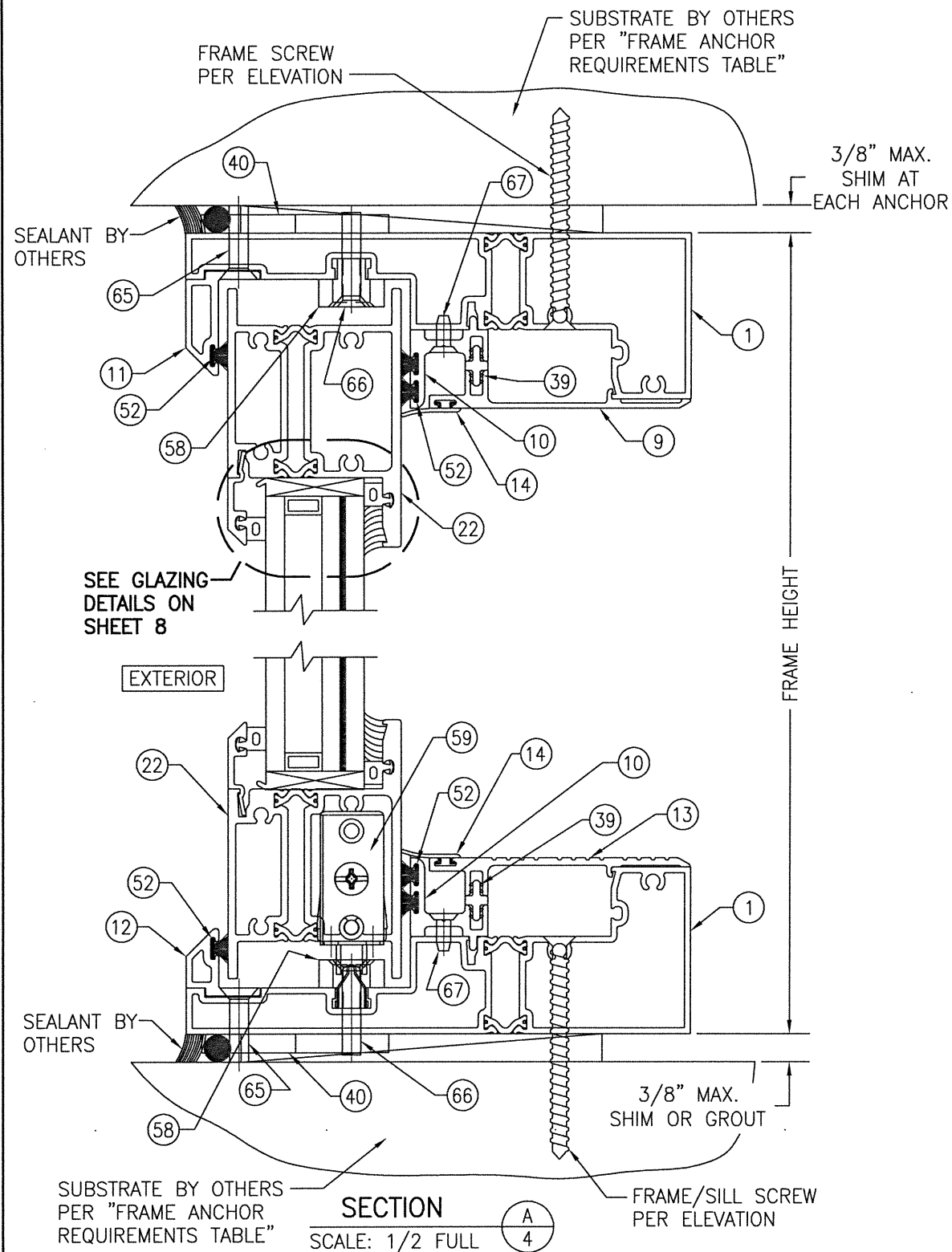
SCALE: 1/2" = 1'-0"

ELEVATION NOTES:

1. FIXED "O" PANELS SHOWN AS SASH GLAZED. DIRECT GLAZING TO FRAME ALSO APPLIES PER THE SECTIONS.
2. THIS ELEVATION IS SHOWN ONLY FOR THE PURPOSE OF DETAILING THE HEAD RECEPTOR & ITS INSTALLATION. FOR ALL OTHER DETAIL, SEE OTHER ELEVATIONS.
3. HEAD RECEPTOR IS APPLICABLE FOR USE WITH ALL DOOR CONFIGURATIONS.
4. FOR APPLICABLE PANEL CONDITIONS AND "O"/"X" COMBINATIONS, SEE NOTATION ON SHEET 2.



DRAWN BY: W.W.S.		CHECKED BY: W.W.S.	
PLOT: 1=24		DATE: 02/08/21	
DATE	BY	REVISION DESCRIPTION	NO.
DRAWING TITLE AA-3200-IR HIGH PRESSURE SLIDING GLASS DOORS (LMI & SMI)		JOB INFORMATION: KAWNEER COMPANY, INC. 555 GUTHRIDGE COURT NORCROSS, GA 30092 770-449-5555	
CONSULTANTS W. W. SCHAEFFER ENGINEERING & CONSULTING, P.A. (REG. NO. F-14980) 7480 150TH COURT NORTH PALM BEACH GARDENS, FL 33418 PHONE: 561-744-3424		CERTIFICATION FEB 09 2021 WARREN W. SCHAEFFER, P.E. P.E. NO. 113497	
DRAWING NO. 1705T	REV.	SHEET NO. 3 OF 10	

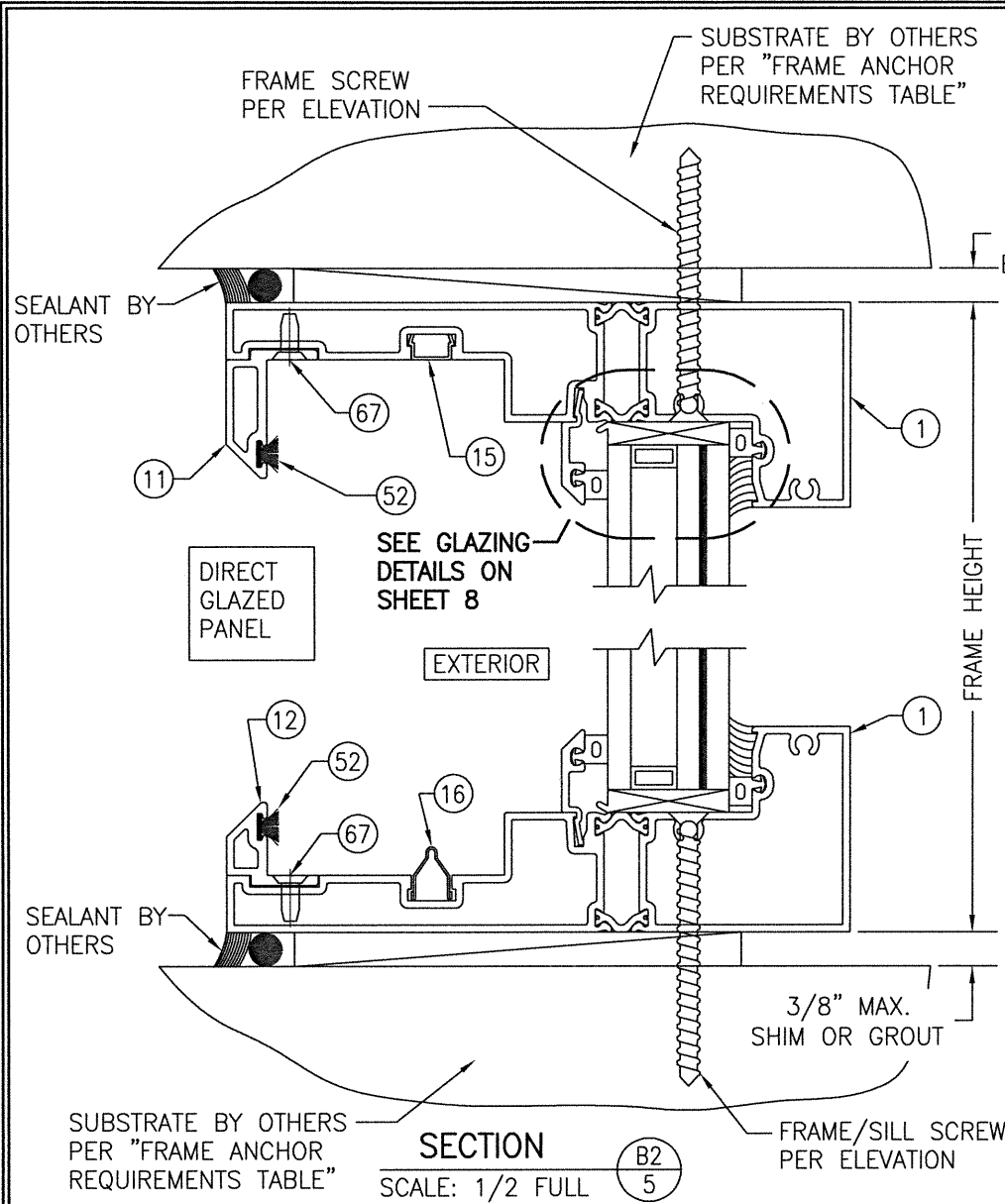


FRAME SCREW MOUNT SHOWN. SEE DETAIL ON SHEET 8 FOR OPTIONAL DIRECT MOUNT DETAIL.



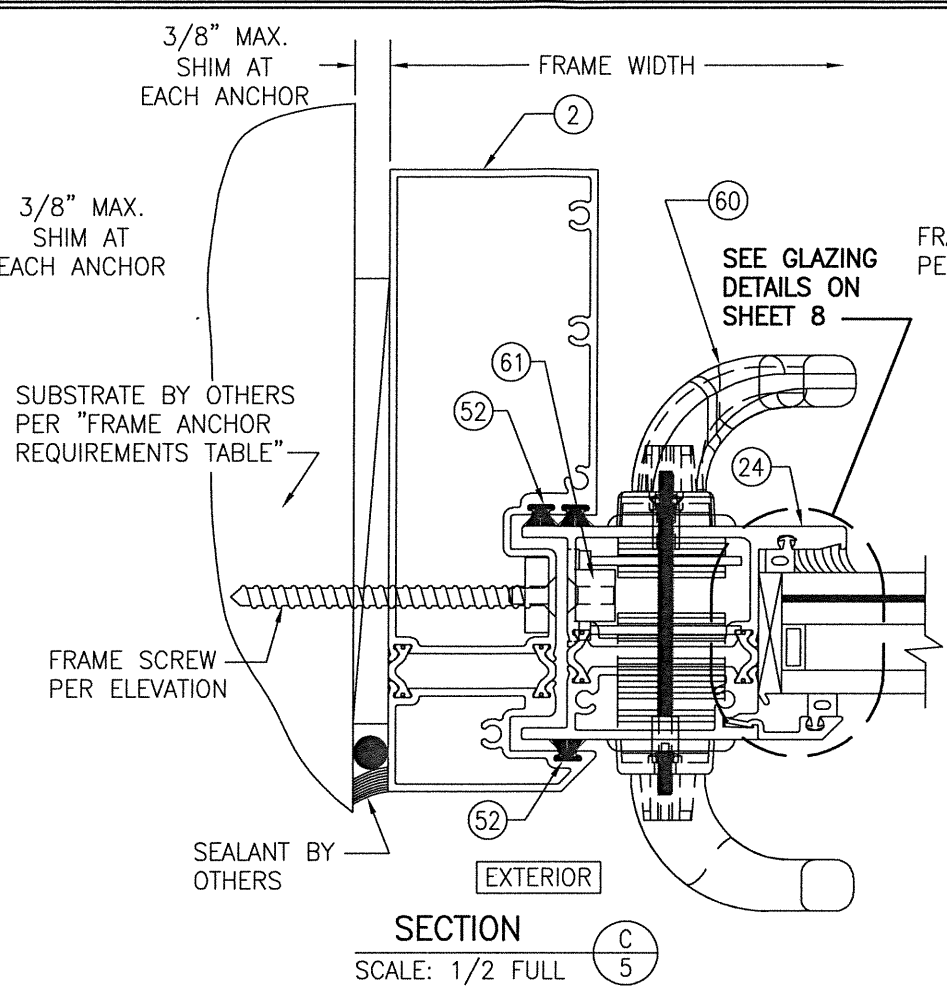
DRAWN BY: W.W.S.		CHECKED BY: W.W.S.	
PLOT: 1=2		DATE: 02/08/21	
NO.	REVISION DESCRIPTION	BY	DATE
DRAWING TITLE: AA-3200-IR HIGH PRESSURE SLIDING GLASS DOORS (LMI & SMI)			
JOB INFORMATION: KAWNEER COMPANY, INC. 555 GUTHRIDGE COURT NORCROSS, GA 30092 770-449-5555			
CONSULTANTS: W. W. SCHAEFER ENGINEERING & CONSULTING, P.A. (REG. NO. F-14980) 7480 150TH COURT NORTH PALM BEACH GARDENS, FL 33418 PHONE: 561-744-3424			
DRAWING NO. 1705T		REV.	
SHEET NO. 4 OF 10			

CERTIFICATION
 FEB 09 2021
 WARREN W. SCHAEFER, P.E.
 P.E. NO. 113497

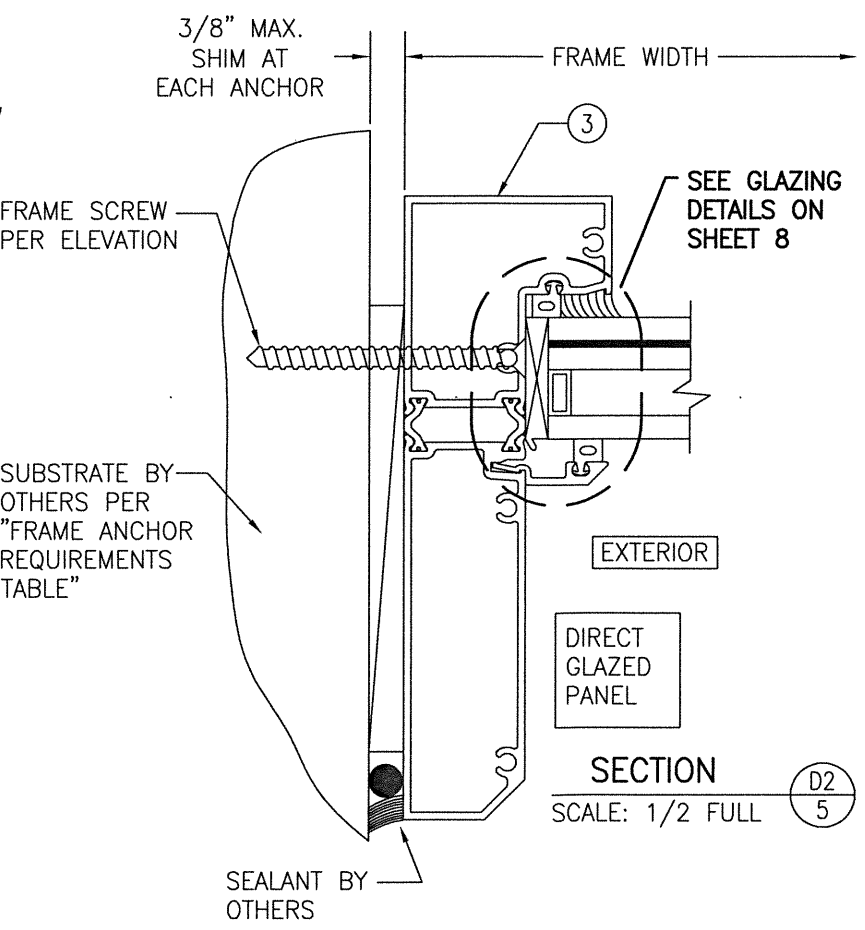


SECTION B2
SCALE: 1/2 FULL

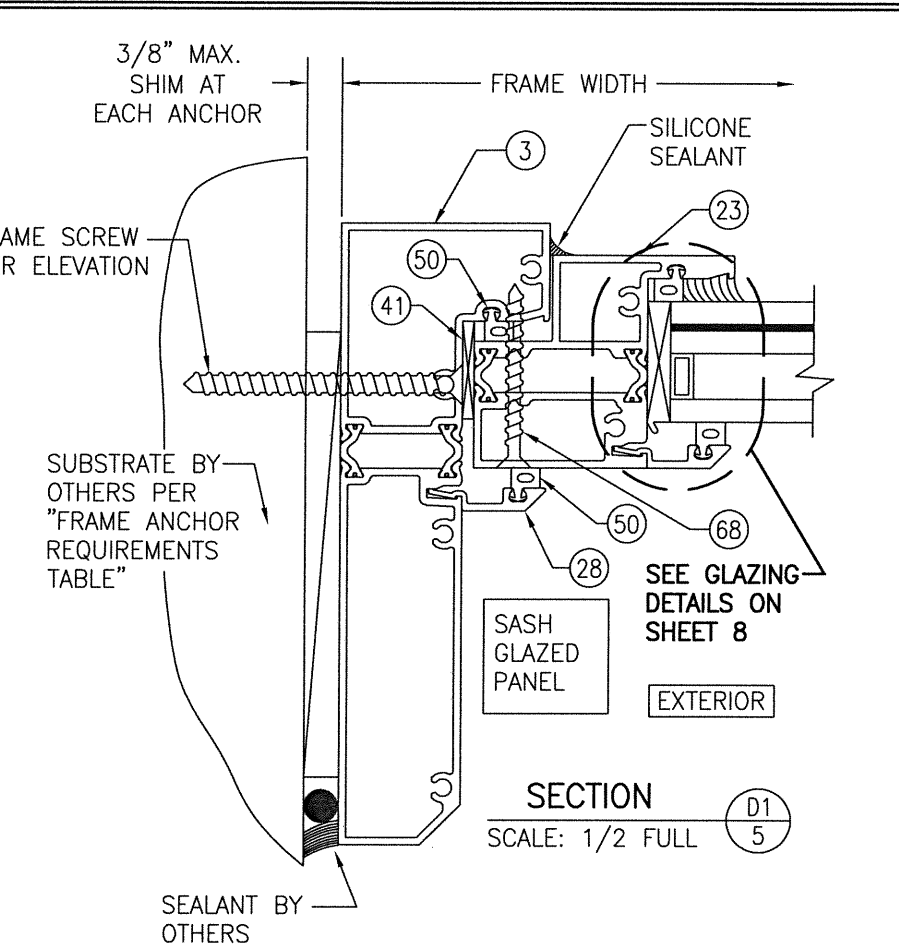
FRAME SCREW MOUNT SHOWN. SEE DETAIL ON SHEET 8 FOR OPTIONAL DIRECT MOUNT DETAIL.



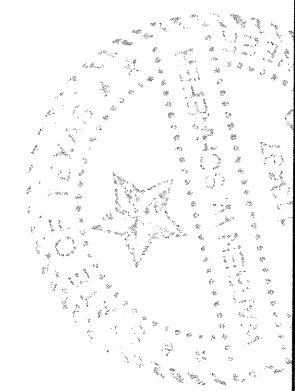
SECTION C
SCALE: 1/2 FULL



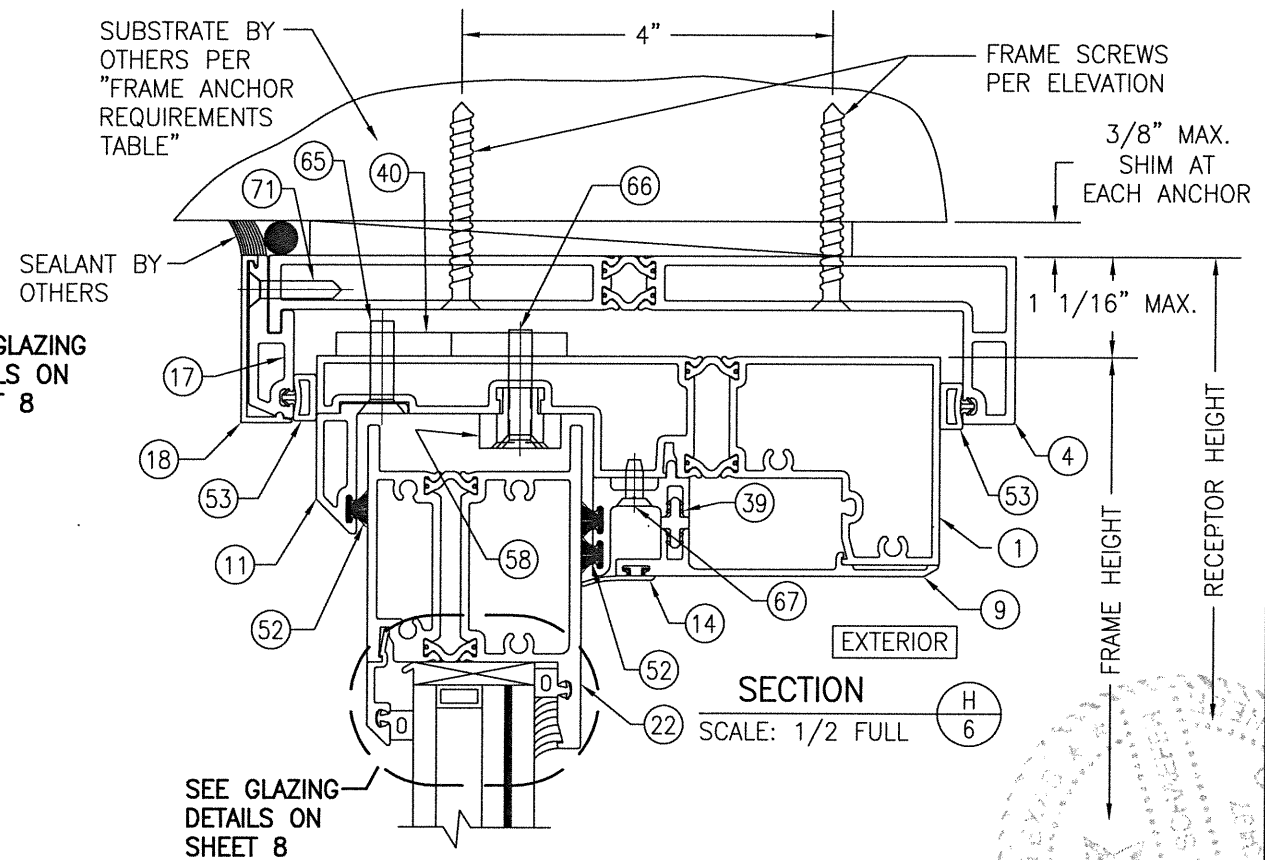
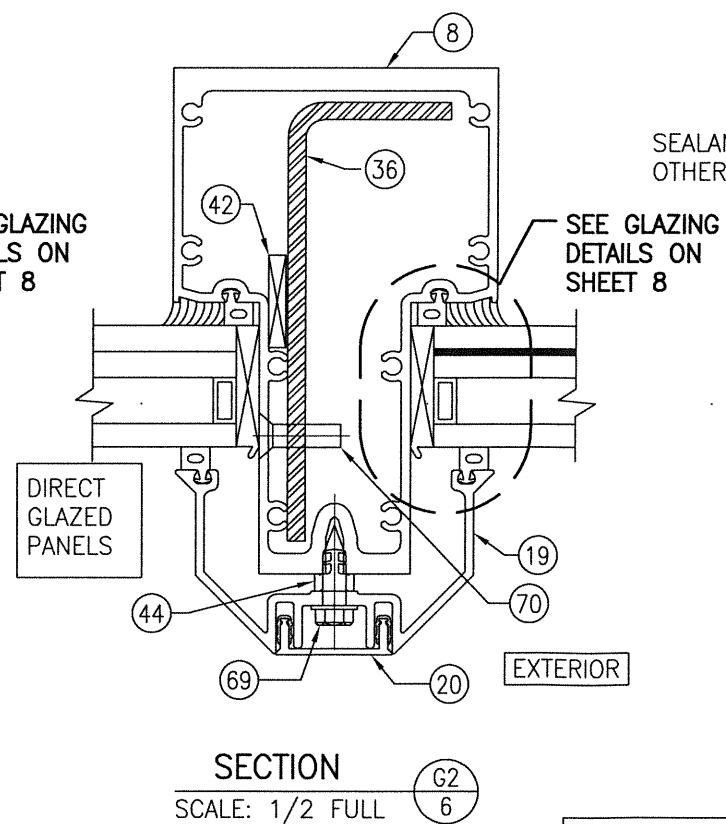
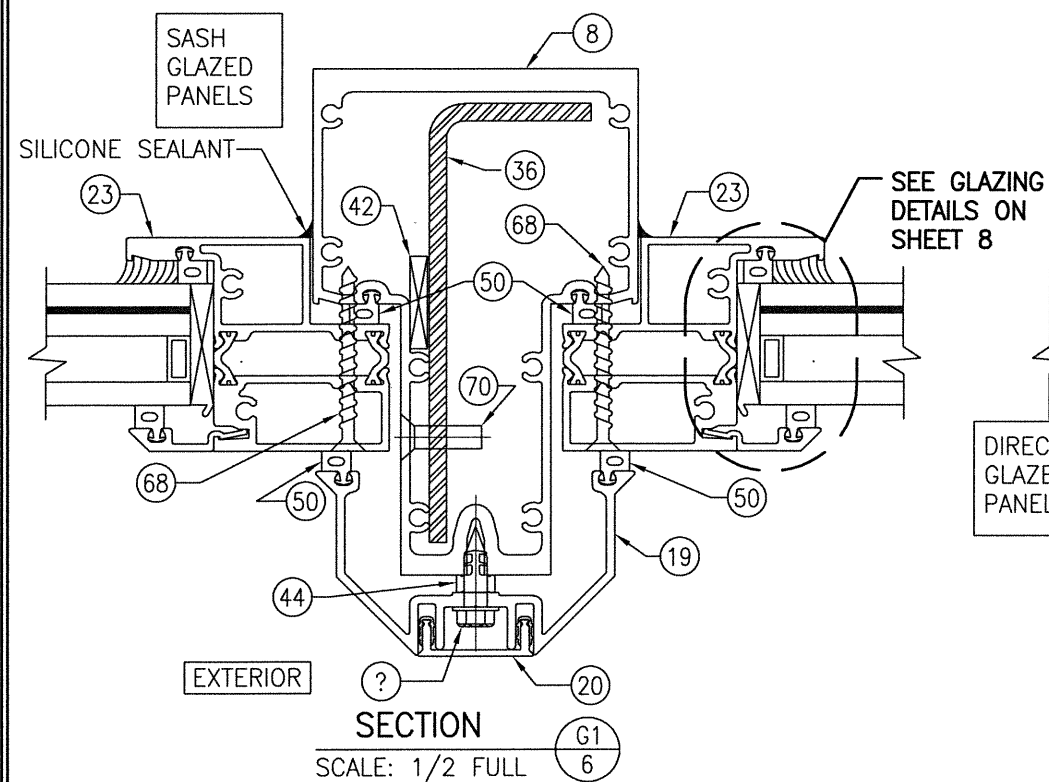
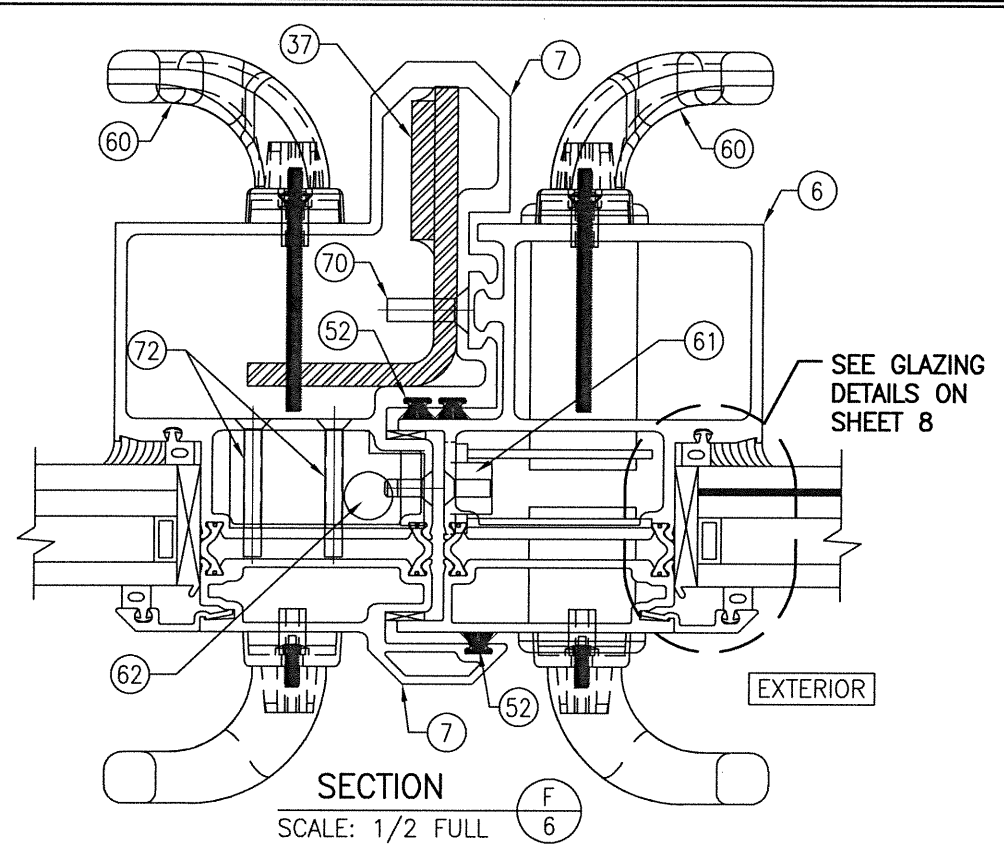
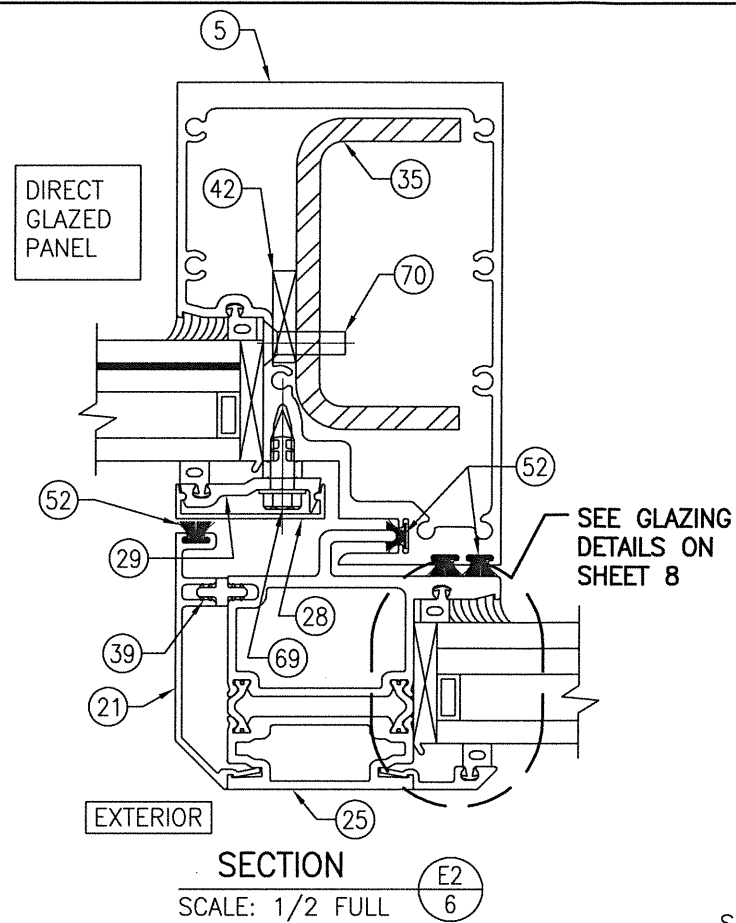
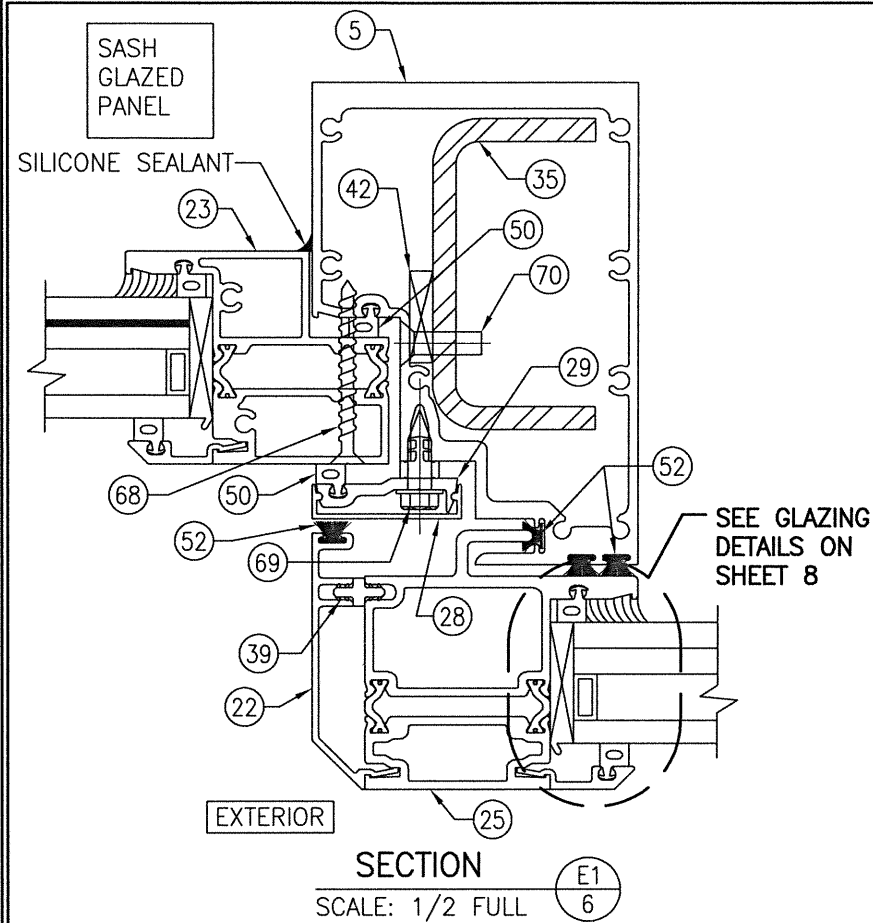
SECTION D2
SCALE: 1/2 FULL



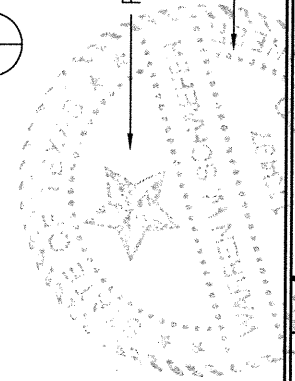
SECTION D1
SCALE: 1/2 FULL



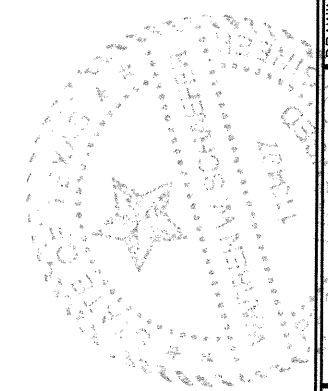
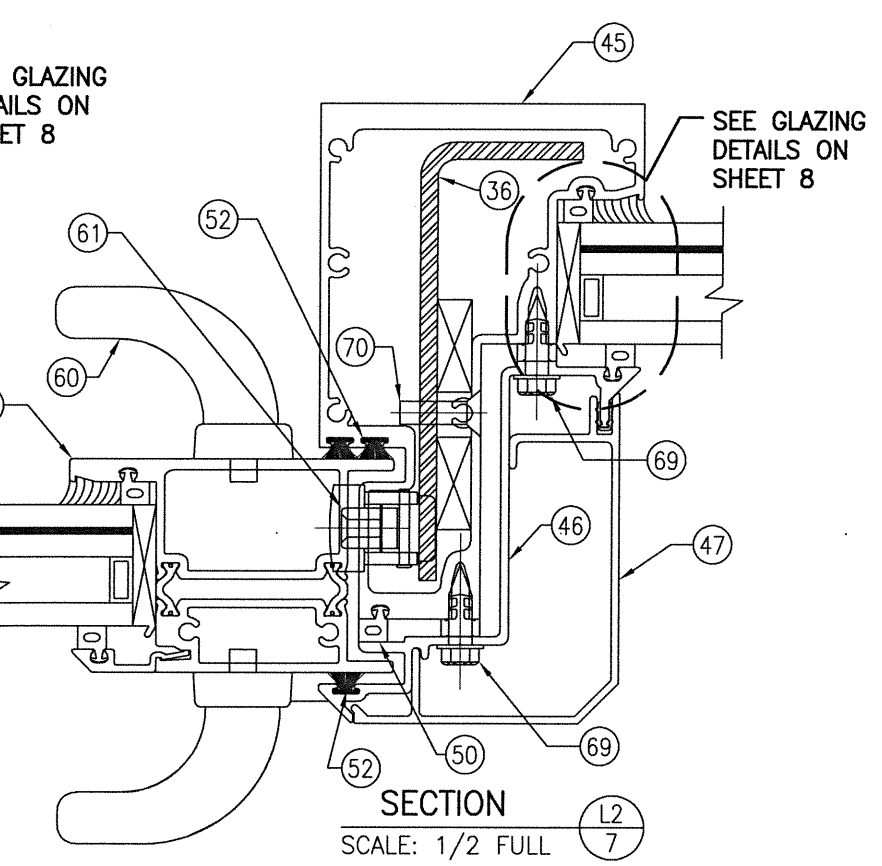
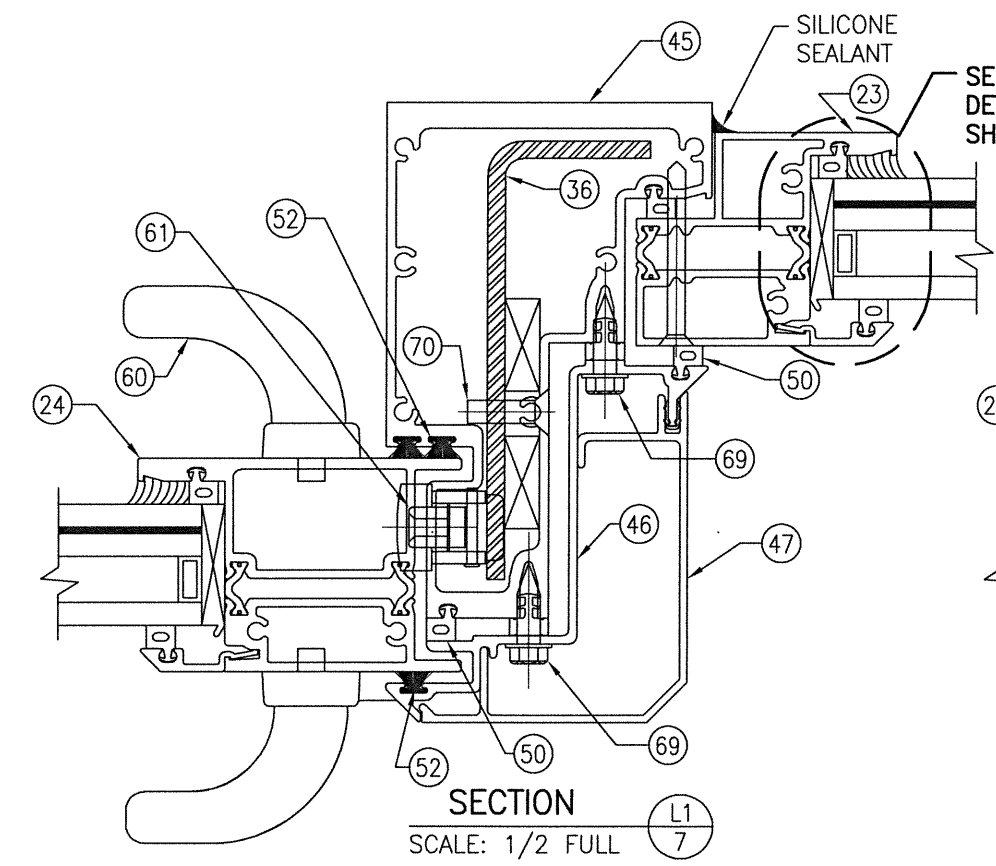
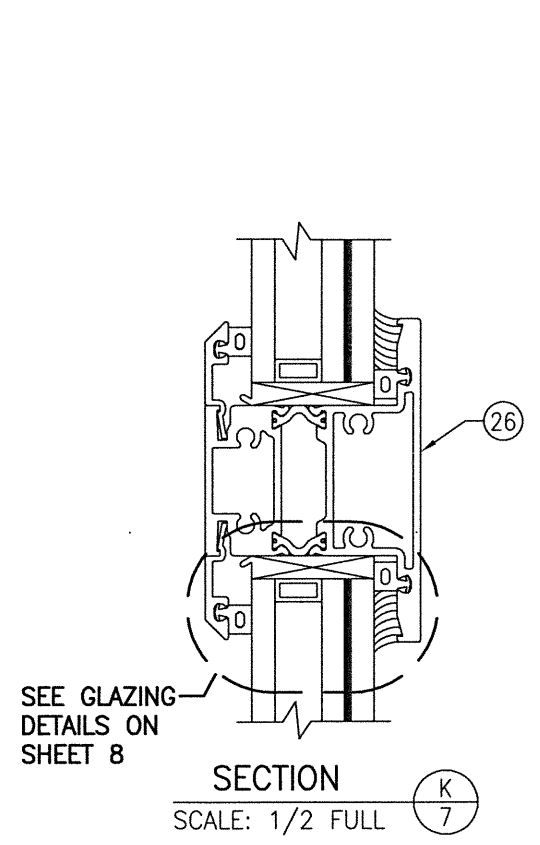
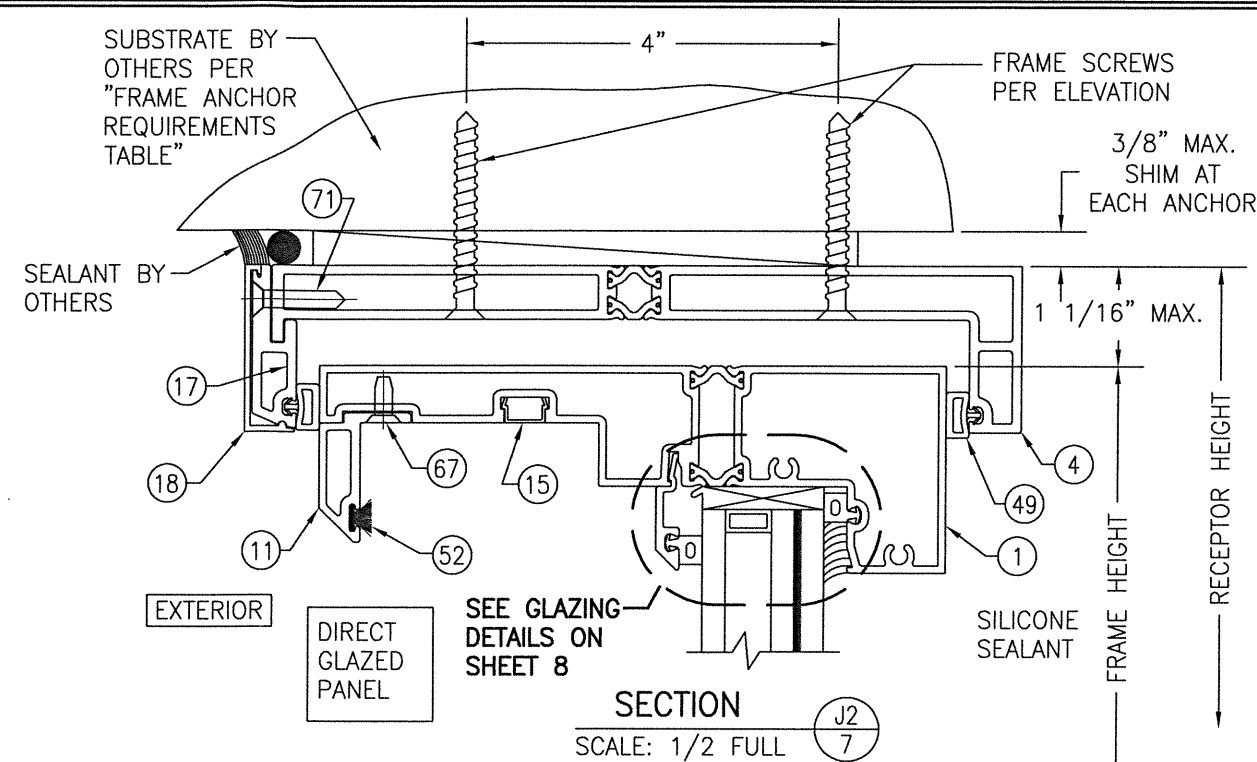
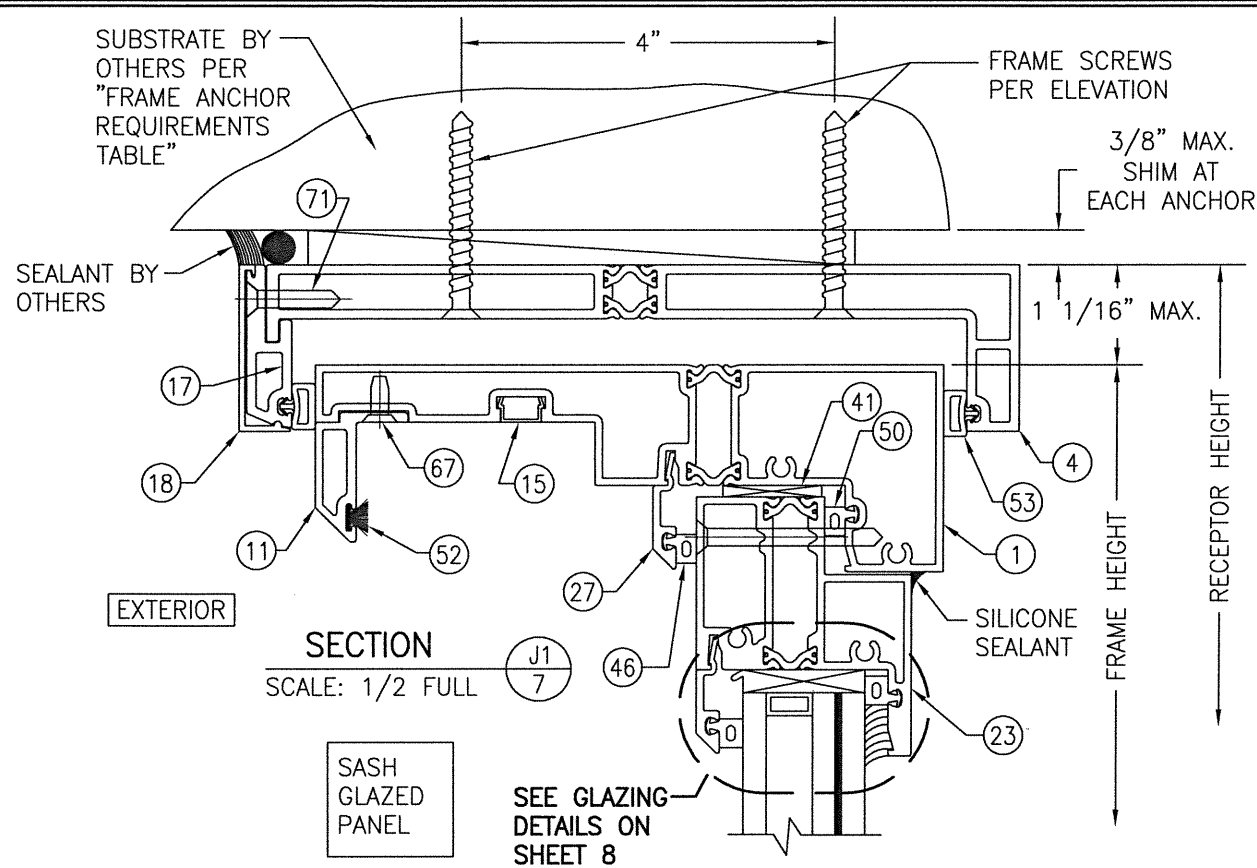
DRAWING NO. 1705T	REV. 5	SHEET NO. 5 OF 10	DRAWING TITLE AA-3200-IR HIGH PRESSURE SLIDING GLASS DOORS (LMI & SMI)	JOB INFORMATION: KAWNEER COMPANY, INC. 555 GUTHRIDGE COURT NORCROSS, GA 30092 770-449-5555	DRAWN BY: W.W.S.	CHECKED BY: W.W.S.								
					DATE: 02/08/21	DATE:								
CERTIFICATION FEB 09 2021			CONSULTANTS W. W. SCHAEFER ENGINEERING & CONSULTING, P.A. (REG. NO. F-14980) 7480 150TH COURT NORTH PALM BEACH GARDENS, FL 33418 PHONE: 561-744-3424			WARREN W. SCHAEFER, P.E. P.E. NO. 113497								
REVISIONS			<table border="1"> <thead> <tr> <th>NO.</th> <th>REVISION DESCRIPTION</th> <th>BY</th> <th>DATE</th> </tr> </thead> <tbody> <tr> <td>1=2</td> <td></td> <td></td> <td></td> </tr> </tbody> </table>				NO.	REVISION DESCRIPTION	BY	DATE	1=2			
NO.	REVISION DESCRIPTION	BY	DATE											
1=2														



FRAME SCREW MOUNT SHOWN. SEE DETAIL ON SHEET 8 FOR OPTIONAL DIRECT MOUNT DETAIL.



DRAWN BY: W.W.S.		CHECKED BY: W.W.S.	
PLOT: 1=2		DATE: 02/08/21	
NO.	REVISION	DESCRIPTION	DATE
DRAWING TITLE AA-3200-IR HIGH PRESSURE SLIDING GLASS DOORS (LMI & SMI)			
JOB INFORMATION: KAWNEER COMPANY, INC. 555 GUTHRIDGE COURT NORCROSS, GA 30092 770-449-5555			
CONSULTANTS W. W. SCHAEFER ENGINEERING & CONSULTING, P.A. (REG. NO. F-14980) 7480 150TH COURT NORTH PALM BEACH GARDENS, FL 33418 PHONE: 561-744-3424			
CERTIFICATION FEB 09 2021 WARREN W. SCHAEFER, P.E. P.E. NO. 113497			
DRAWING NO. 1705T		REV.	
SHEET NO. 6		OF 10	



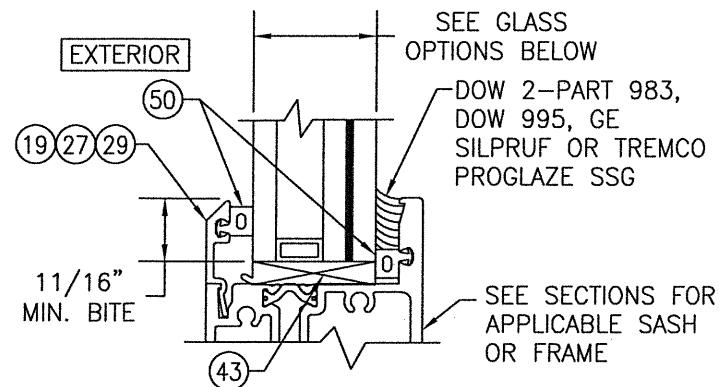
NO.	REVISION DESCRIPTION	BY	DATE

DRAWING TITLE
AA-3200-IR HIGH PRESSURE SLIDING GLASS DOORS (LMI & SMI)

CONSULTANTS
W. W. SCHAEFER ENGINEERING & CONSULTING, P.A. (REG. NO. F-14980)
7480 150TH COURT NORTH
PALM BEACH GARDENS, FL 33418
PHONE: 561-744-3424

JOB INFORMATION:
KAWNEER COMPANY, INC.
555 GUTHRIDGE COURT
NORCROSS, GA 30092
770-449-5555

CERTIFICATION
FEB 09 2021
WARREN W. SCHAEFER, P.E.
P.E. NO. 113497



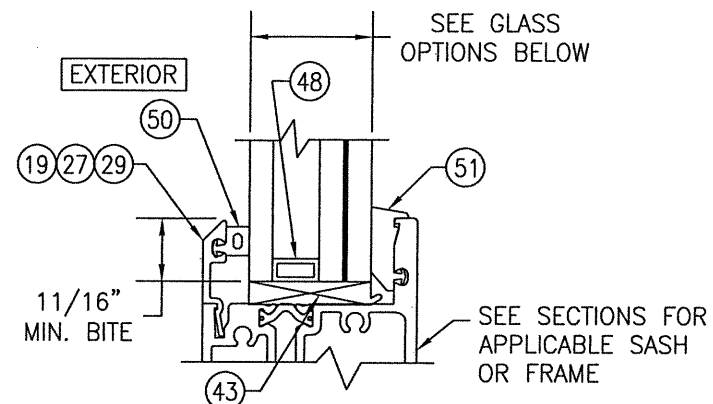
**TYPICAL GLAZING DETAIL
(L.M.I. WET GLAZED)**

GLASS OPTIONS:

OPTION 1: 1 5/16" I.G. WITH 1/4" TEMPERED OUTBOARD, 1/2" AIR SPACE & LAMINATED 1/4" HS/0.077" EASTMAN CHEM. CO. SAFLEX STORM/1/4" HS INBOARD

OPTION 2: 1 5/16" I.G. WITH 1/4" TEMPERED OUTBOARD, 1/2" AIR SPACE & LAMINATED 1/4" HS/0.09" KURARAY SG/1/4" HS INBOARD

SEE GLASS
OPTIONS BELOW
DOW 2-PART 983,
DOW 995, GE
SILPRUF OR TREMCO
PROGLAZE SSG
SEE SECTIONS FOR
APPLICABLE SASH
OR FRAME



**TYPICAL GLAZING DETAIL
(S.M.I. DRY GLAZED)**

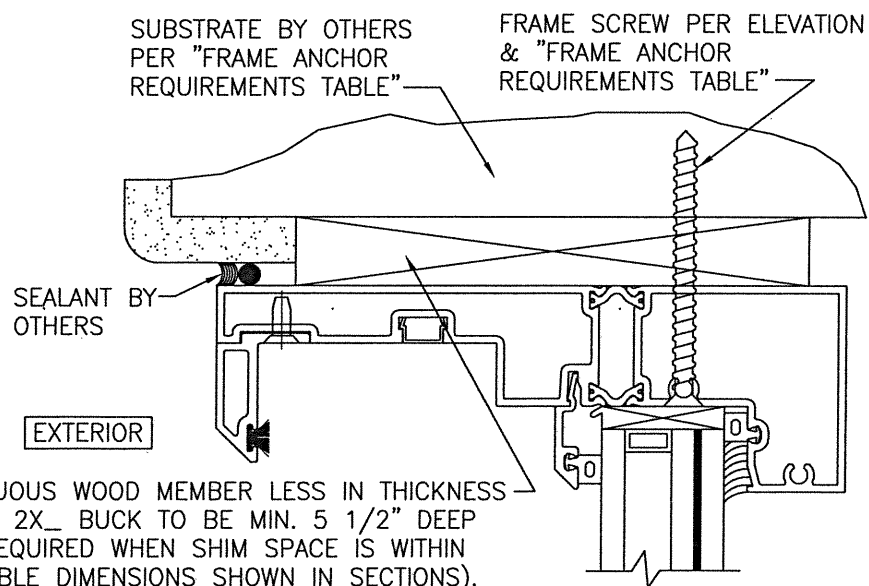
GLASS OPTIONS:

OPTION 3: 1 5/16" I.G. WITH 1/4" TEMP OUTBOARD, 1/2" AIR SPACE & LAMINATED 1/4" HS/0.06" EASTMAN CHEM. CO. SAFLEX/1/4" HS INBOARD

OPTION 4: 1 5/16" I.G. WITH 1/4" TEMP OUTBOARD, 1/2" AIR SPACE & LAMINATED 1/4" HS/0.06" KURARAY BUTACITE PVB/1/4" HS INBOARD

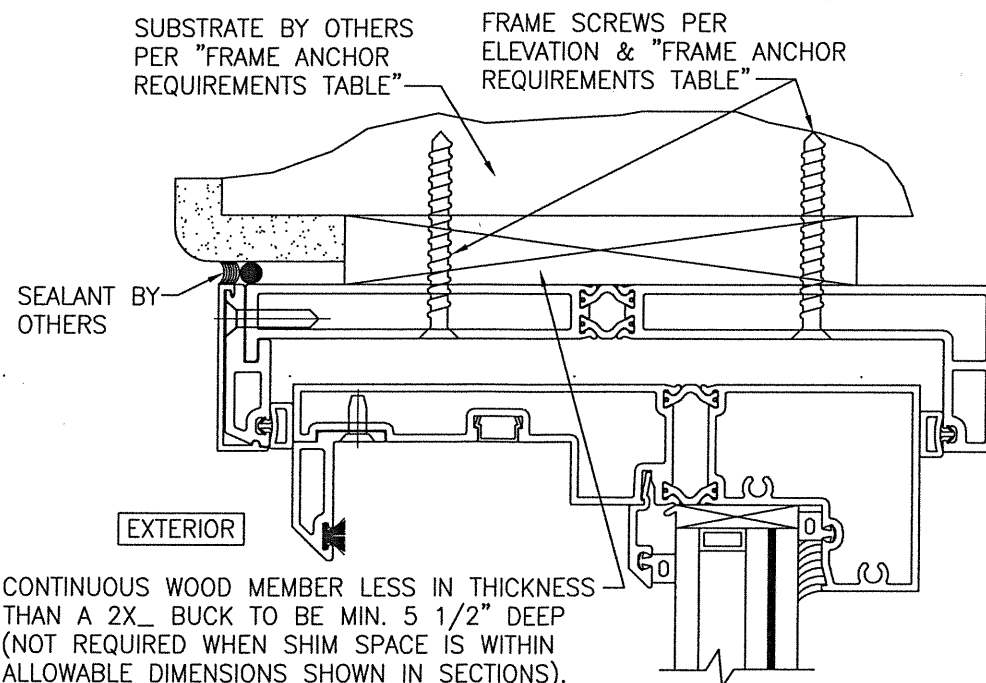
SEE GLASS
OPTIONS BELOW
SEE SECTIONS FOR
APPLICABLE SASH
OR FRAME

L.M.I. = LARGE MISSILE IMPACT
S.M.I. = SMALL MISSILE IMPACT



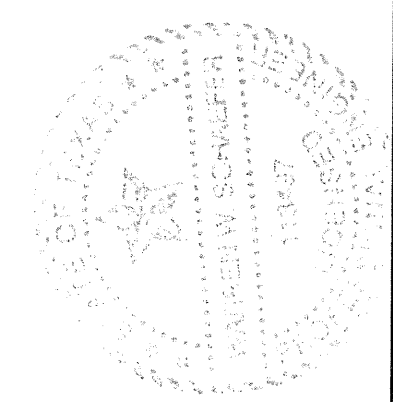
**OPTIONAL DIRECT MOUNT DETAIL
TO SUBSTRATE WITH SPACER
(NO HEAD RECEPTOR)**

(HEAD SECTION SHOWN; SILL & SIDES ARE INSTALLED THE SAME)
(FOR DETAIL NOT SHOWN, SEE OTHER SECTIONS)

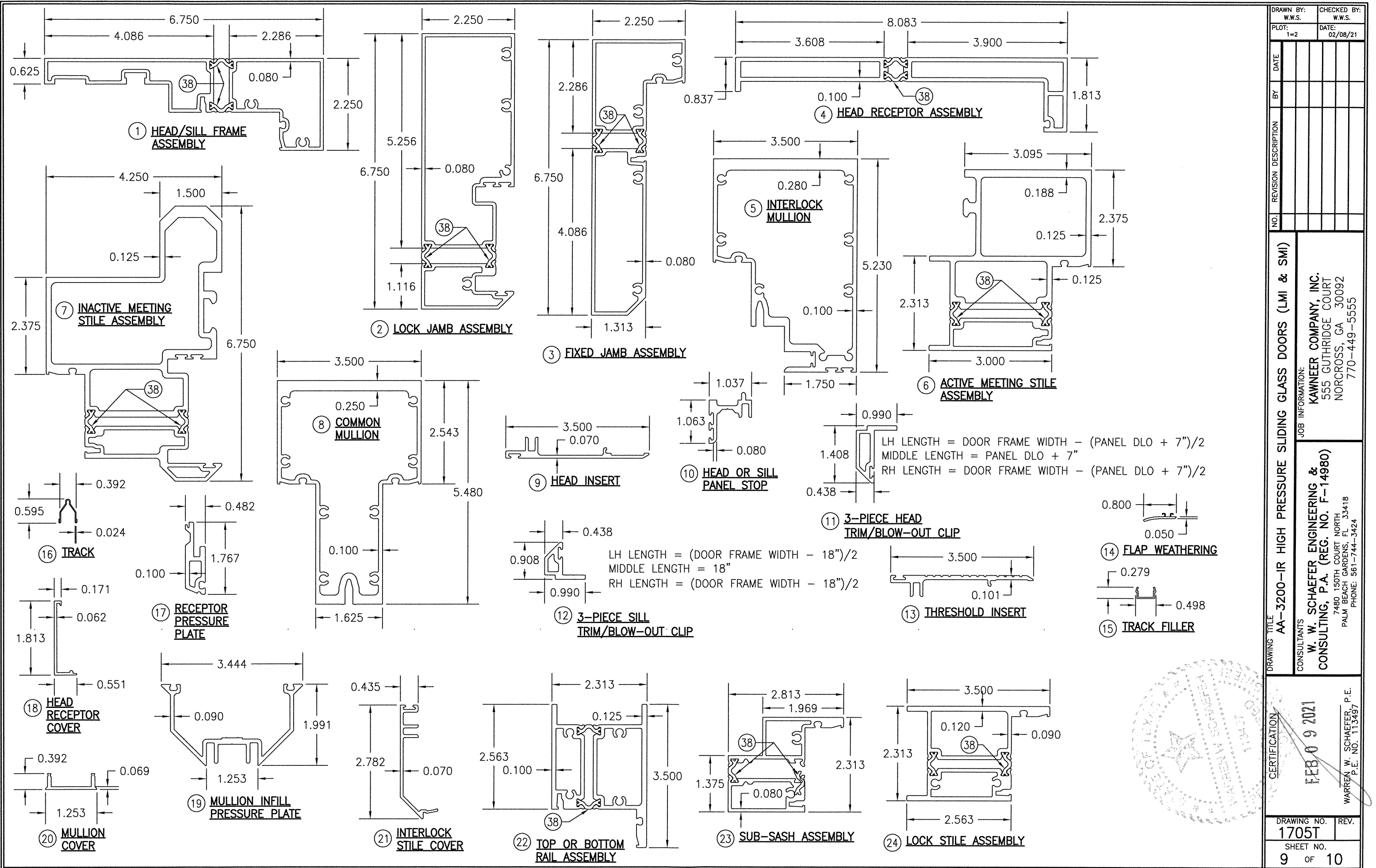


**OPTIONAL DIRECT MOUNT DETAIL
TO SUBSTRATE WITH SPACER
(WITH HEAD RECEPTOR)**

(HEAD SECTION SHOWN; SILL & SIDES ARE INSTALLED THE SAME)
(FOR DETAIL NOT SHOWN, SEE OTHER SECTIONS)



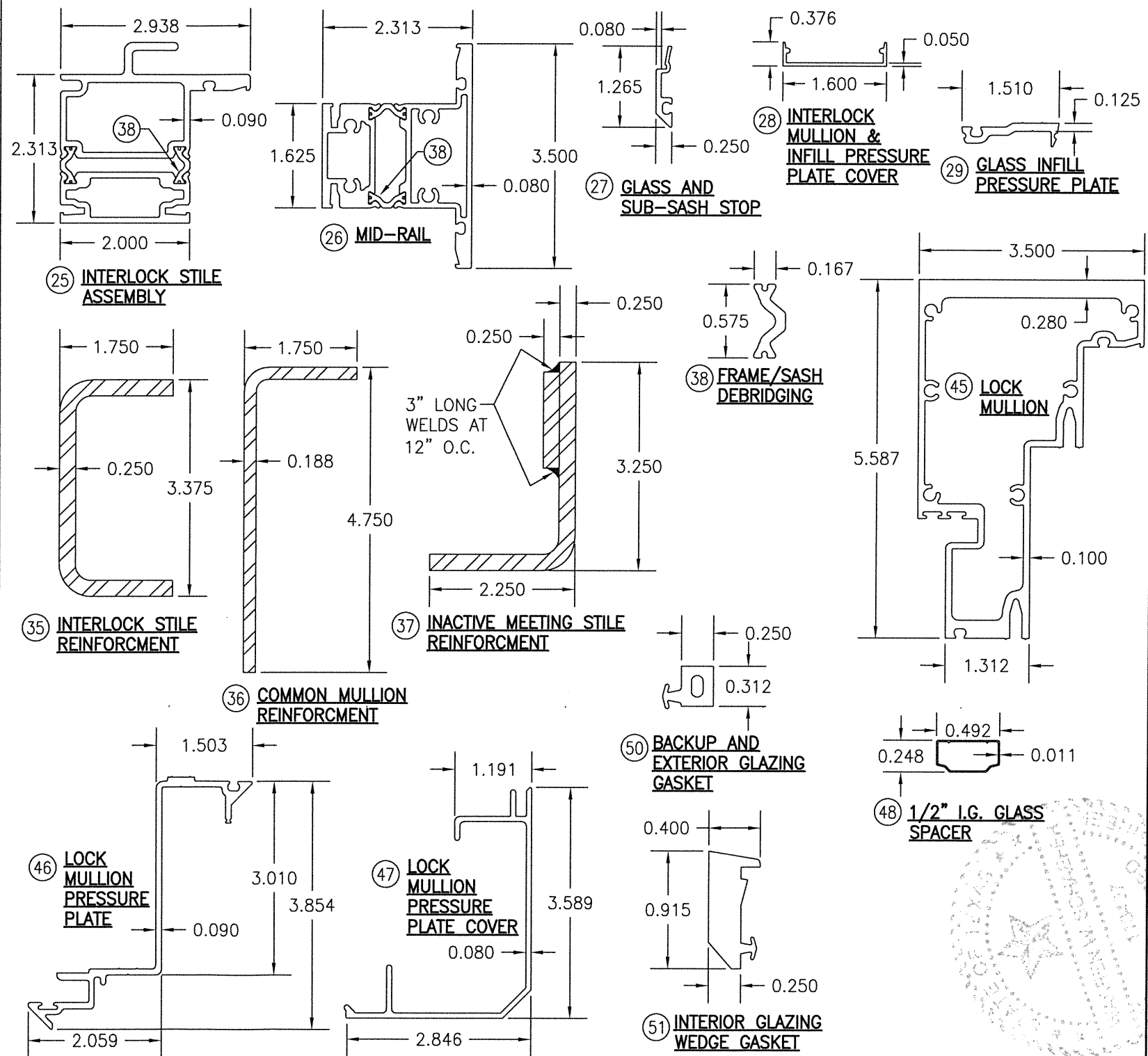
DRAWN BY: W.W.S.		CHECKED BY: W.W.S.	
PLOT: 1=2		DATE: 02/08/21	
NO.	REVISION DESCRIPTION	BY	DATE
DRAWING TITLE AA-3200-IR HIGH PRESSURE SLIDING GLASS DOORS (LMI & SMI)			
JOB INFORMATION: KAWNEER COMPANY, INC. 555 GUTHRIDGE COURT NORCROSS, GA 30092 770-449-5555			
CONSULTANTS W. W. SCHAEFER ENGINEERING & CONSULTING, P.A. (REG. NO. F-14980) 7480 150TH COURT NORTH PALM BEACH GARDENS, FL 33418 PHONE: 561-744-3424			
CERTIFICATION FEB 09 2021		WARREN W. SCHAEFER, P.E. P.E. NO. 113497	
DRAWING NO. 1705T		REV.	
SHEET NO. 8 OF 10			



DRAWING NO. 1705T	REV. 9	SHEET NO. 9 OF 10	DRAWING TITLE AA-3200-IR HIGH PRESSURE SLIDING GLASS DOORS (LMI & SMI)	JOB INFORMATION: KAWNEER COMPANY, INC. 555 GUTHRIDGE COURT NORCROSS, GA 30092 770-449-5555	DRAWN BY: W.W.S.	CHECKED BY:W.W.S.
					DATE	DATE
CERTIFICATION FEB 09 2021 WARREN W. SCHAEFER, P.E. P.E. NO. 113497			NO.	REVISION DESCRIPTION	BY	DATE
			1			
			2			

ITEM #	ITEM DESCRIPTION	MANUFACTURER/NOTES
PARTS		
1	HEAD/SILL FRAME ASSEMBLY	6063-T6 ALUMINUM
2	LOCK JAMB ASSEMBLY	6063-T6 ALUMINUM
3	FIXED JAMB ASSEMBLY	6063-T6 ALUMINUM
4	HEAD RECEPTOR ASSEMBLY	6063-T6 ALUMINUM
5	INTERLOCK MULLION	6063-T6 ALUMINUM
6	ACTIVE MEETING STILE ASSEMBLY	6063-T6 ALUMINUM
7	INACTIVE MEETING STILE ASSEMBLY	6063-T6 ALUMINUM
8	COMMON MULLION	6063-T6 ALUMINUM
9	HEAD INSERT	6063-T6 ALUMINUM
10	HEAD OR SILL PANEL STOP	6063-T6 ALUMINUM
11	3-PIECE HEAD TRIM/BLOW-OUT CLIP	6063-T6 ALUMINUM
12	3-PIECE SILL TRIM/BLOW-OUT CLIP	6063-T6 ALUMINUM
13	THRESHOLD INSERT	6063-T6 ALUMINUM
14	FLAP WEATHERING	RIGID PVC/ALCRYN
15	TRACK FILLER	RIGID PVC
16	TRACK	300 SERIES STAINLESS STEEL
17	RECEPTOR PRESSURE PLATE	6063-T6 ALUMINUM
18	HEAD RECEPTOR COVER	6063-T6 ALUMINUM
19	MULLION INFILL PRESSURE PLATE	6063-T6 ALUMINUM
20	MULLION COVER	6063-T6 ALUMINUM
21	INTERLOCK STILE COVER	6063-T6 ALUMINUM
22	TOP OR BOTTOM RAIL ASSEMBLY	6063-T6 ALUMINUM
23	SUB-SASH ASSEMBLY	6063-T6 ALUMINUM
24	LOCK STILE ASSEMBLY	6063-T6 ALUMINUM
25	INTERLOCK STILE ASSEMBLY	6063-T6 ALUMINUM
26	MID-RAIL ASSEMBLY	6063-T6 ALUMINUM
27	GLASS & SUB-SASH STOP	6063-T6 ALUMINUM
28	INTERLOCK MULL & INFILL COVER	6063-T6 ALUMINUM
29	GLASS INFILL PRESSURE PLATE	6063-T6 ALUMINUM
35	INTERLOCK MULLION REINFORCEMENT	A36 STEEL
36	COMMON MULLION REINFORCEMENT	A36 STEEL
37	INACTIVE MEETING STILE REINFORCEMENT	A36 STEEL
38	FRAME/SASH DEBRIDGING	TECATHERM-66-GF
39	THERMAL SEPERATOR	RIGID PVC/FLEXIBLE PVC
40	ANTI-BLOWOUT CLIP BACKUP PLATE	6063-T6 ALUMINUM
41	1/8" FIXED PANEL SETTING BLOCK	NEOPRENE
42	1/4" REINFORCEMENT SETTING BLOCK	NEOPRENE
43	1/4" GLASS SETTING BLOCK	NEOPRENE
44	THERMAL SEPERATOR	EPDM
45	LOCK MULLION	6063-T6 ALUMINUM
46	LOCK MULLION PRESSURE PLATE	6063-T6 ALUMINUM
47	LOCK MULLION PRESSURE PLATE COVER	6063-T6 ALUMINUM
48	1/2" I.G. GLASS SPACER	3005 OR 3105 ALUMINUM
SEALS & SEALANTS		
50	BACKUP & EXTERIOR GLAZING GASKET	TREMCO TR2983W EPDM (DUROMETER = 60)
51	INTERIOR GLAZING GASKET	TREMCO EPDM SPONGE
52	TRI-FIN WEATHERSTRIP	ULTRAFAB W71225NK POLYPROPELENE
53	GASKET/WEATHER SEAL	KRP 065-401 TPV/POLYPROPELENE
HARDWARE		
58	6063-T6 ALUM. FLUSH BOLT SHOE	7/8"X2"X3/8" THK (KAWNEER NO. 594420)
59	LARGE 300 SERIES SS WHEEL CASTER	KAWNEER PART NO. 594451
60	HANDLE	AS REQUIRED TO PULL DOOR
61	ACTIVE PANEL MAXIMUM SECURITY LOCK	KAWNEER PART NO. 594503
62	INACTIVE PANEL FLUSH BOLTS	KAWNEER PART NO. 594520

ITEM #	ITEM DESCRIPTION	MANUFACTURER/NOTES
FASTENERS		
65	1/4-20 X 1" FHMS SCREW	1" FROM ENDS & 3" O.C. AT HEAD 1.5" & 3" FROM ENDS & 3" O.C. AT SILL
66	1/4-20 X 1 9/32" FHMS SCREW	2 PER SHOE
67	NO. 10 X 1/2" FHTF S.S. SCREW	1"-3" FROM ENDS AND 12" MAX. O.C.
68	NO. 10 X 1 1/2" FHTF S.S. SCREW	12" FROM CORNERS AND 18" MAX. O.C.
69	1/4" X 7/8" HWHTFS S.S. SCREW	3" FROM ENDS AND 9" MAX. O.C.
70	1/4-20 X 7/8" FHMS S.S. SCREW	6 1/2" FROM ENDS AND 48" MAX. O.C.
71	NO. 10 X 1 1/2" FHMS S.S. SCREW	3" FROM ENDS AND 3" MAX. O.C.
72	10-32 X 1 1/2" FHMS S.S. SCREW	2 GUIDE BLOCK AT TOP & BOTTOM



DRAWN BY: W.W.S.	CHECKED BY: W.W.S.
PLOT: 1=2	DATE: 02/08/21
NO.	REVISION DESCRIPTION
DATE	BY
NO.	REVISION DESCRIPTION
DATE	BY
NO.	REVISION DESCRIPTION
DATE	BY
NO.	REVISION DESCRIPTION
DATE	BY

DRAWING TITLE
AA-3200-IR HIGH PRESSURE SLIDING GLASS DOORS (LMI & SMI)

CONSULTANTS
W. W. SCHAEFER ENGINEERING & CONSULTING, P.A. (REG. NO. F-14980)
7480 150TH COURT NORTH
PALM BEACH GARDENS, FL 33418
PHONE: 561-744-3424

JOB INFORMATION:
KAWNEER COMPANY, INC.
555 GUTHRIDGE COURT
NORCROSS, GA 30092
770-449-5555

CERTIFICATION
FEB 09 2021
WARREN W. SCHAEFER, P.E.
P.E. NO. 113497

DRAWING NO.
1705T

REV.

SHEET NO.
10 OF 10