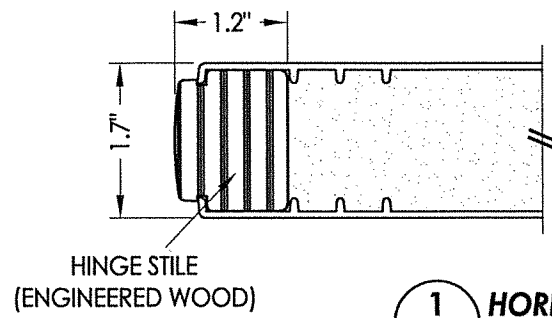
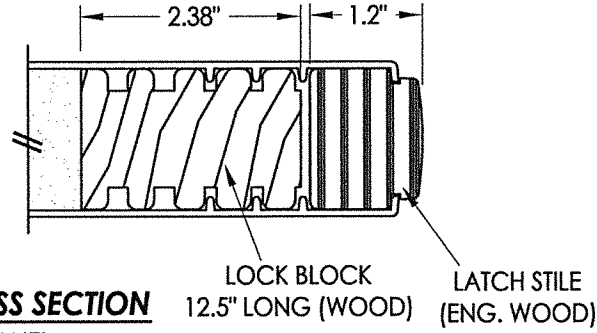


Z:\Clients\Therma Tru PERMANENT\B - Texas Dept of Ins\VTDI - ID XXXX - 6'8 OP GLZ FG Imp Molded Open (TX-5209-5213)\C - Drawings\TX-5212-5213.dwg



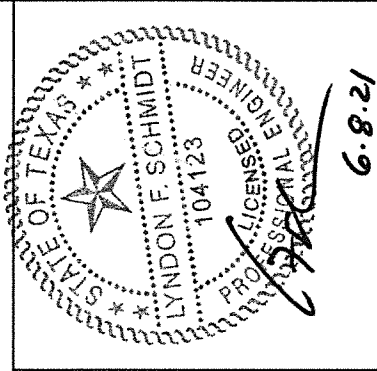
HINGE STILE
(ENGINEERED WOOD)

1 HORIZONTAL CROSS SECTION
2 WOOD EDGE DOOR PANEL



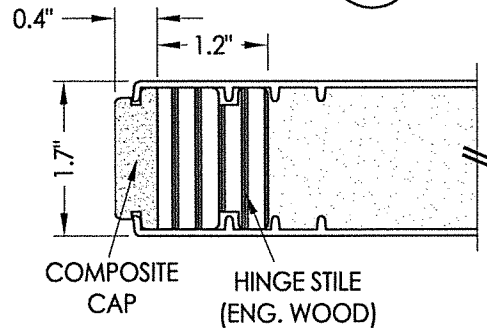
LOCK BLOCK
12.5\"/>

NOTE: BOOK, HYBRID & U1 DOORS
MAY EACH BE FABRICATED AS WOOD
OR COMPOSITE EDGE DOORS.



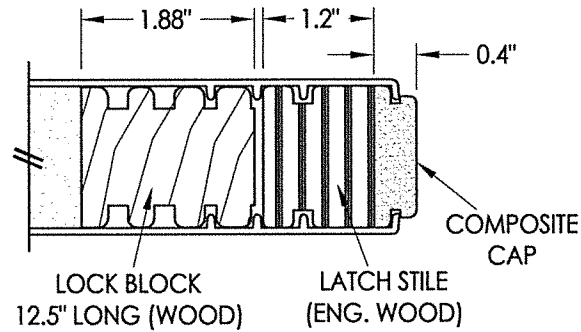
6.8.21

Documents Prepared By: Lyndon F. Schmidt, P.E.
TEXAS P.E. #104123
RW BUILDING CONSULTANTS, INC.
P.O. Box 230 Vairico FL. 33595
Phone No.: 813.659.9197
TEXAS BOARD OF PROFESSIONAL ENGINEERS
CERTIFICATE OF REGISTRATION # F-11852



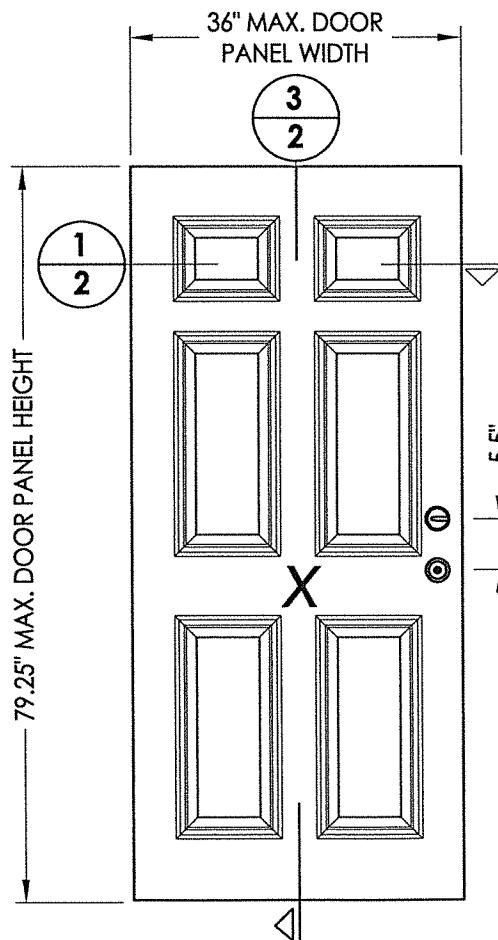
COMPOSITE
CAP HINGE STILE
(ENG. WOOD)

2 HORIZONTAL CROSS SECTION
2 COMPOSITE EDGE DOOR PANEL

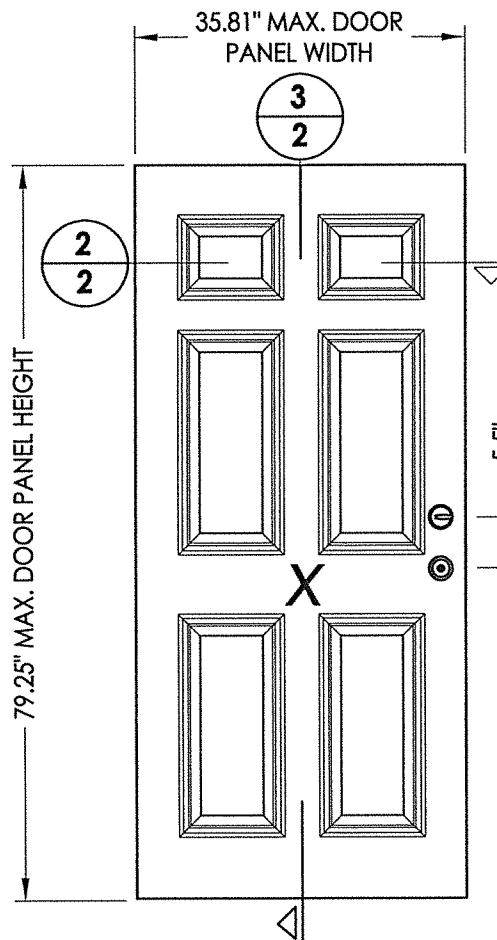


LOCK BLOCK
12.5\"/>

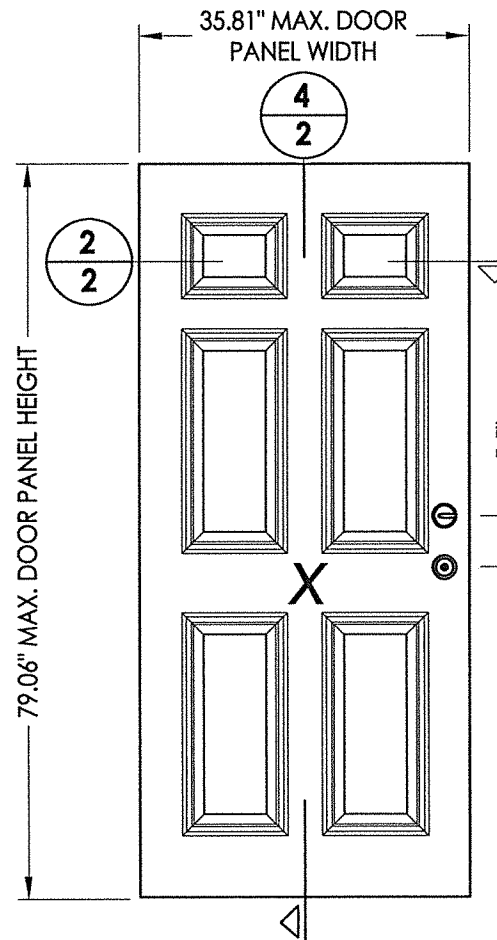
LATCH STILE
(ENG. WOOD)
COMPOSITE
CAP



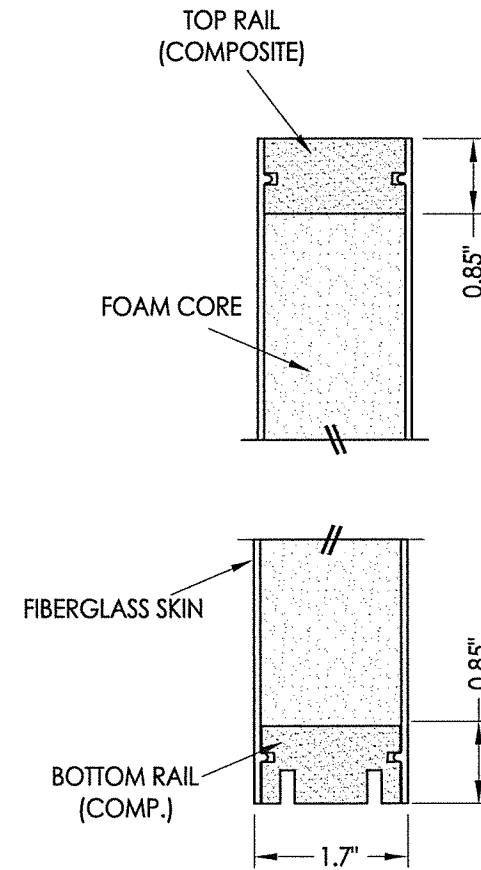
40 FIBERGLASS DOOR PANEL
BOOK DOOR



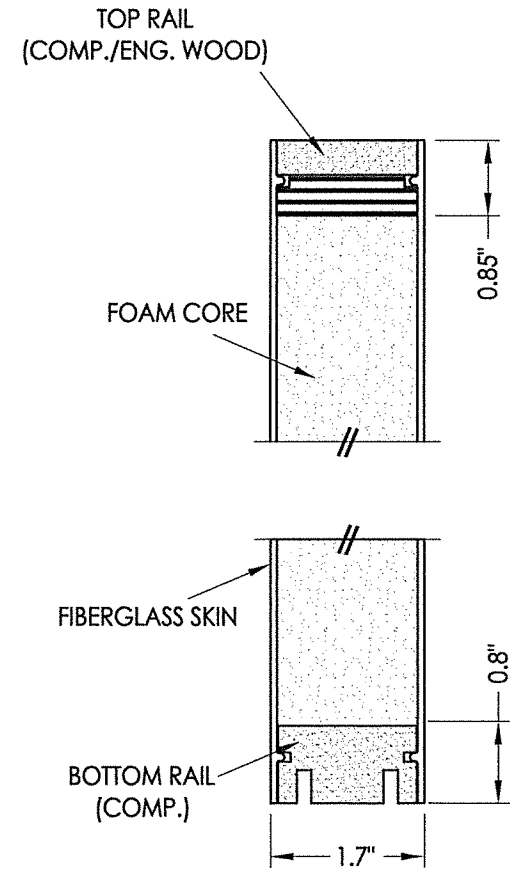
41 FIBERGLASS DOOR PANEL
HYBRID DOOR



42 FIBERGLASS DOOR PANEL
U1 DOOR



3 VERTICAL CROSS SECTION
2 WOOD EDGE DOOR PANEL

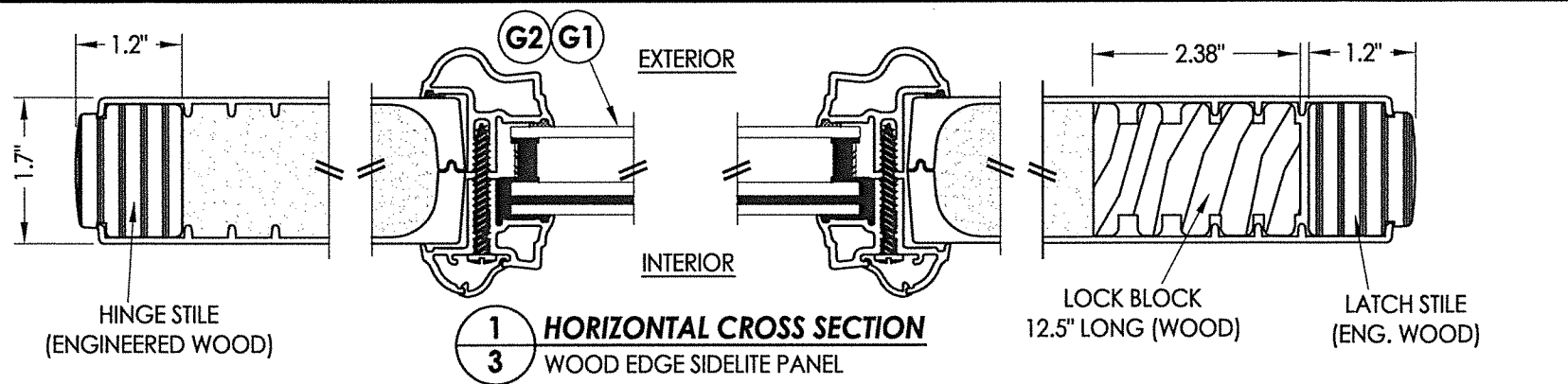


4 VERTICAL CROSS SECTION
2 COMPOSITE EDGE DOOR PANEL

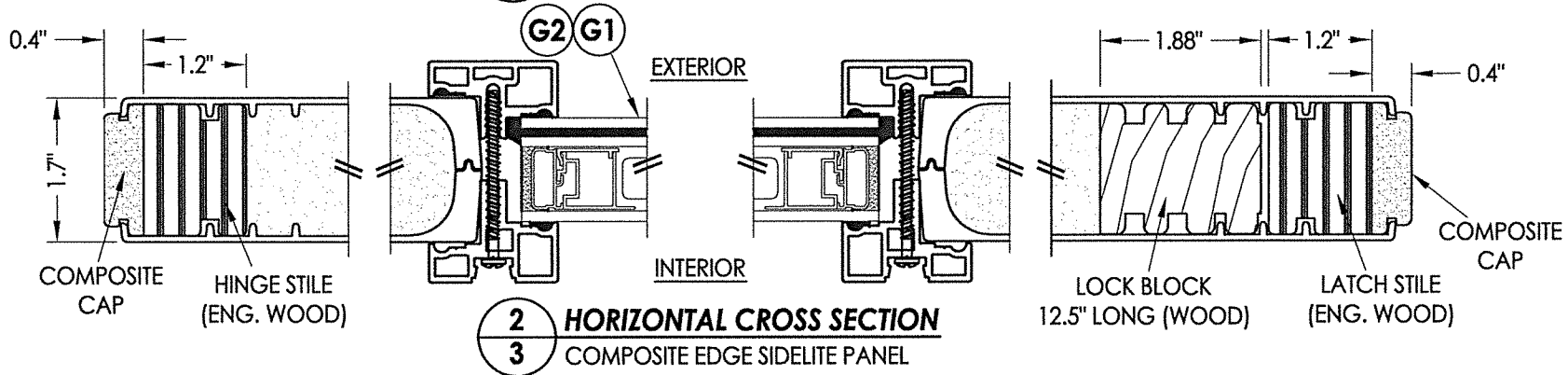
FIBERGLASS SKIN: 0.073\"/>

PRODUCT: THERMA-TRU FIBERGLASS DOOR	
PART OR ASSEMBLY: DOOR PANEL DETAILS	
NO.	DATE
BY	REVISIONS
DATE: 5/27/21	SCALE: N.T.S.
DWG. BY: RW	CHK. BY: LFS
DRAWING NO.: TX-5213	
SHEET 2 OF 10	

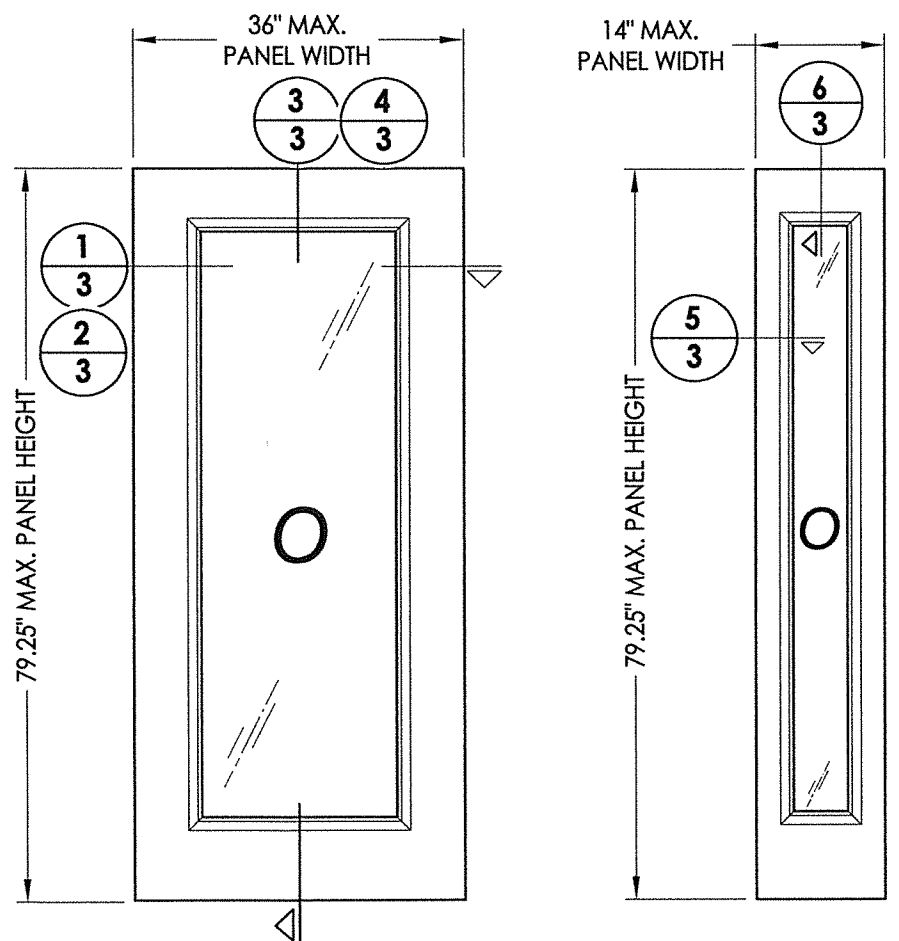
Z:\Clients\Therma Tru PERMANENT\B - Texas Dept of Ins\TDI - ID XXXX - 6'8 OP GLZ FG Imp Molded Open (TX 5209-5213)\C - Drawings\TX-5212-5213.dwg



1 HORIZONTAL CROSS SECTION
3 WOOD EDGE SIDELITE PANEL

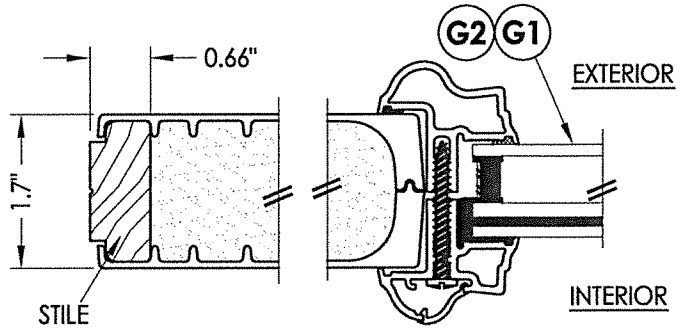


2 HORIZONTAL CROSS SECTION
3 COMPOSITE EDGE SIDELITE PANEL

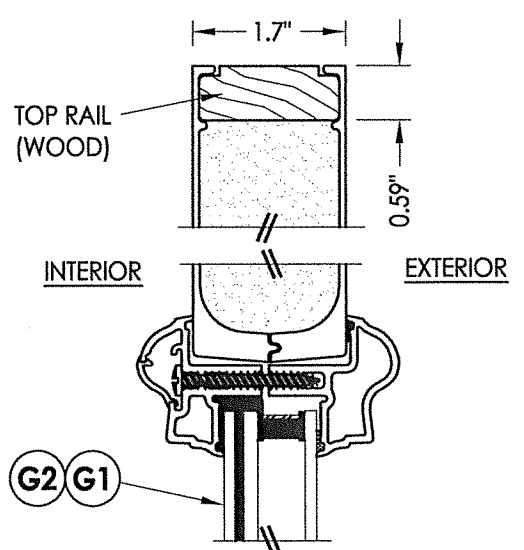


50 FIBERGLASS SIDELITE PANEL
 36\"/>

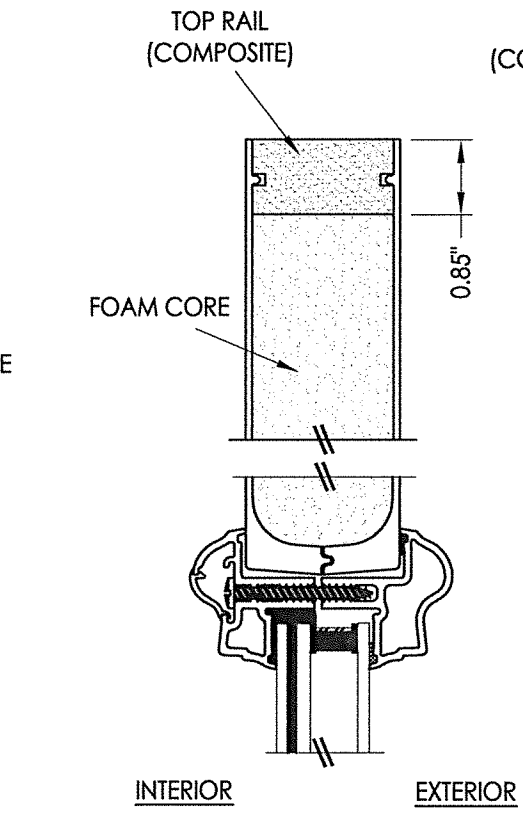
50 SIDELITE PANEL
 14\"/>



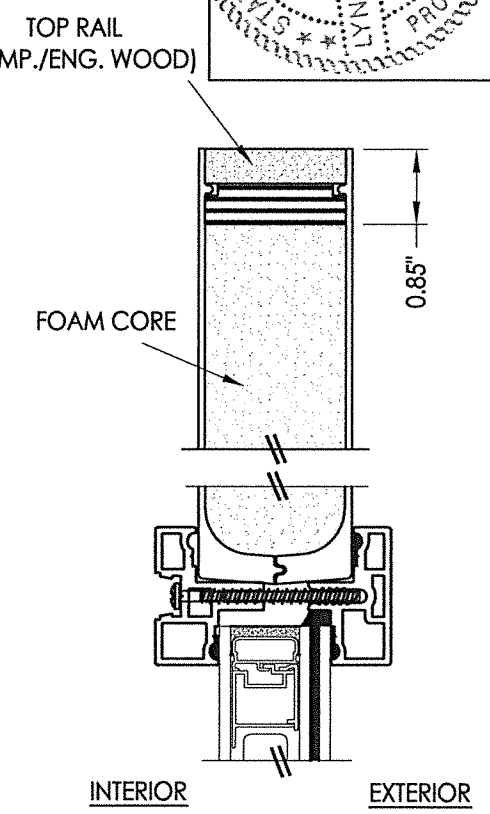
5 HORIZONTAL CROSS SECTION
3 14\"/>



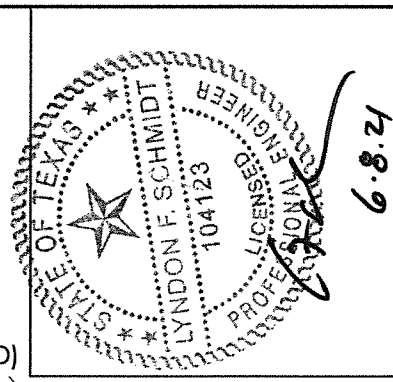
6 VERTICAL CROSS SECTION
3 14\"/>



3 VERTICAL CROSS SECTION
3 WOOD EDGE SIDELITE PANEL



4 VERTICAL CROSS SECTION
3 COMPOSITE EDGE SIDELITE PANEL



Documents Prepared By: Lyndon F. Schmidt, P.E.
 TEXAS P.E. #104123

RW BUILDING CONSULTANTS, INC.
 P.O. Box 230 Vairico FL 33595
 Phone No.: 813.659.9197

PRODUCT: THERMA-TRU FIBERGLASS DOOR
 PART OR ASSEMBLY: SIDELITE PANEL DETAILS

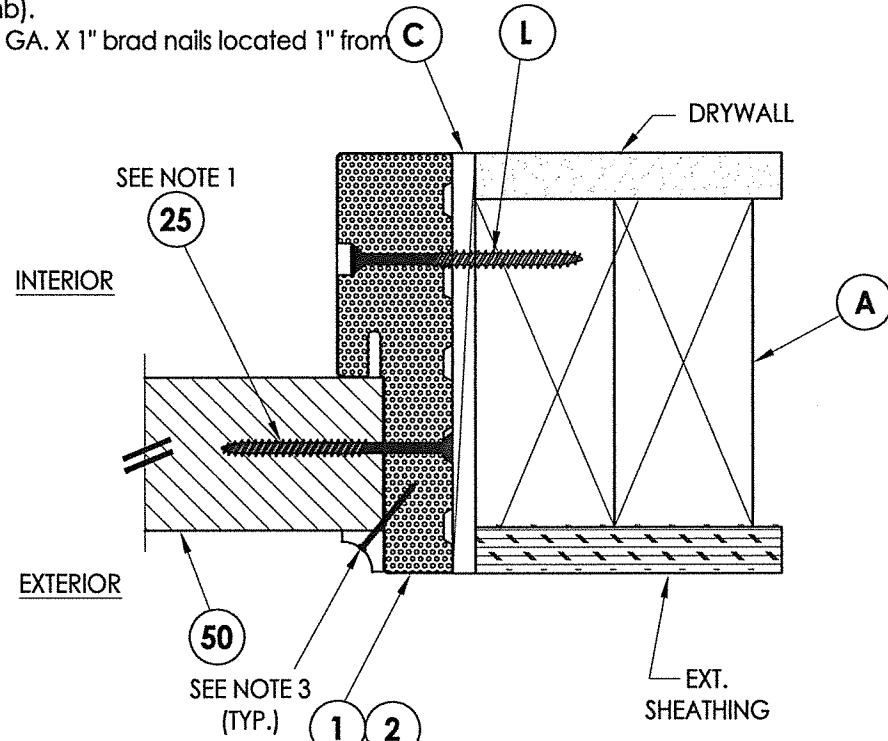
NO.	DATE	BY

DATE: 5/27/21
 SCALE: N.T.S.
 DWG. BY: RW
 CHK. BY: LFS
 DRAWING NO.: TX-5213
 SHEET 3 OF 10

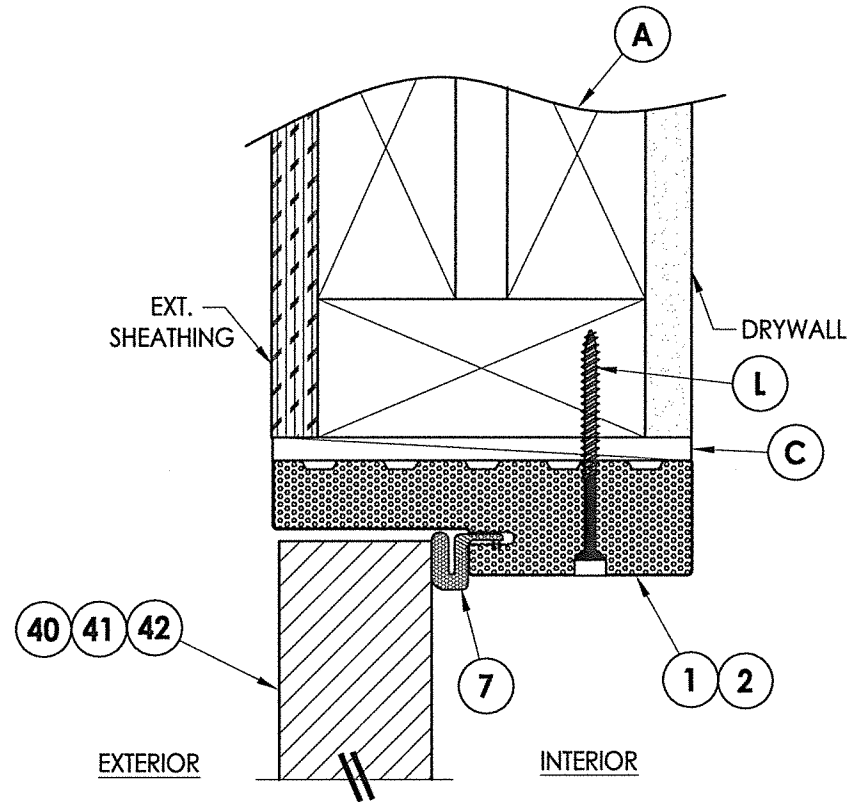
Z:\Clients\Therma Tru PERMANENT\B - Texas Dept of Ins\TDL - ID XXXX - 68 OP GLZ FG Imp Molded Open (TX-5209-5213)\C - Drawings\TX-5212-5213.dwg

Notes:

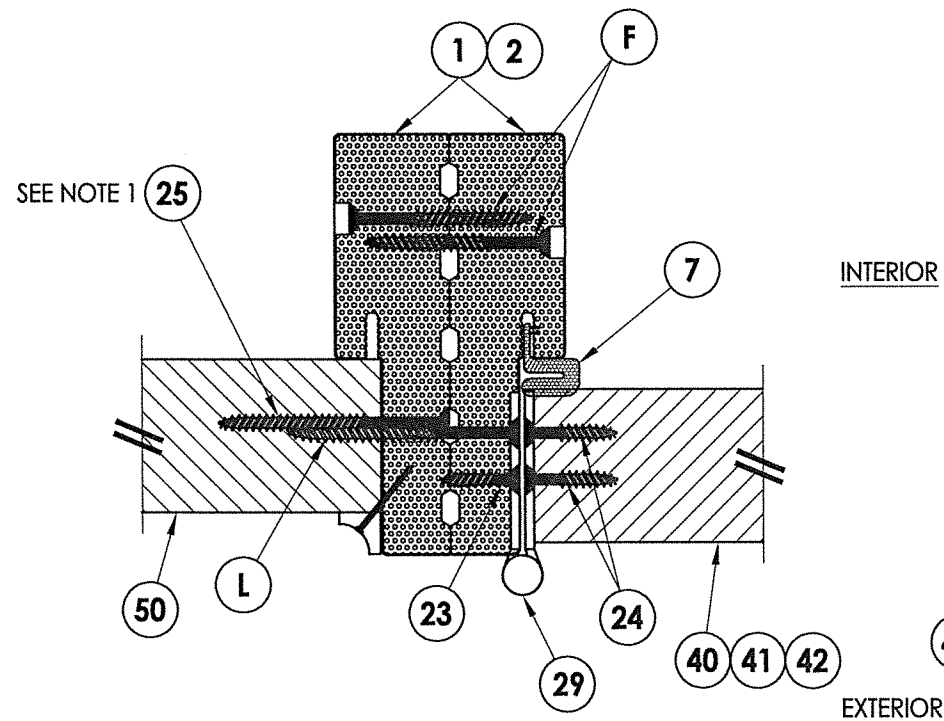
1. Sidelite assembly screws located 6" from each end and 5 more screws equally spaced between (7 screws total per side jamb).
2. Sidelite assembly screws located 3" from each end and @ centerline (3 screws along head jamb).
3. PVC/Wood Moulding secured w/ 16 GA. X 1" brad nails located 1" from ends & 10" o.c. max.



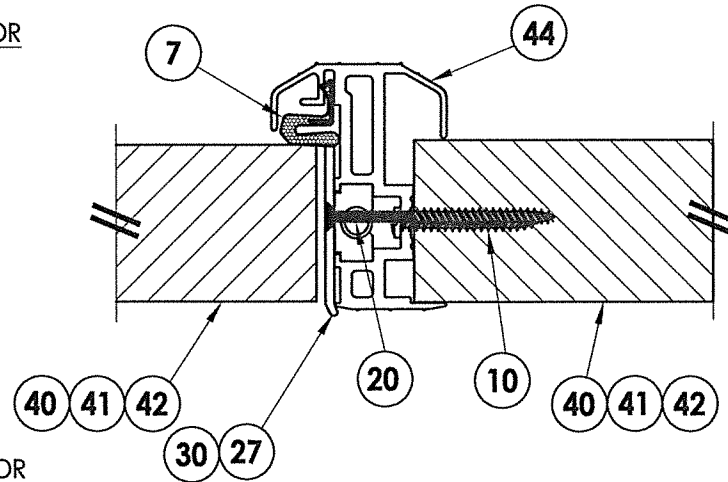
1 HORIZONTAL CROSS SECTION
5 Outswing shown (Inswing similar)



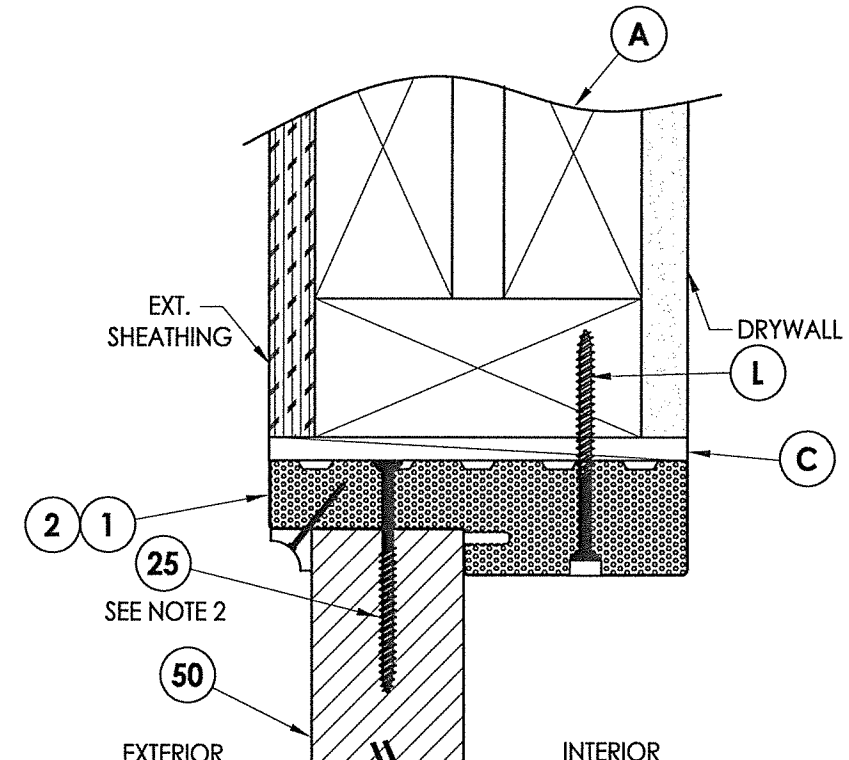
2 VERTICAL CROSS SECTION
5 Outswing shown (Inswing similar)



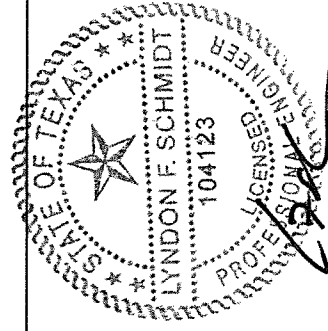
4 HORIZONTAL CROSS SECTION
5 Outswing shown (Inswing similar)



5 HORIZONTAL CROSS SECTION
5 Outswing shown (Inswing similar)



3 VERTICAL CROSS SECTION
5 Outswing shown (Inswing similar)



6.8.21

Documents Prepared By: Lyndon F. Schmidt, P.E.
TEXAS P.E. #104123

RW BUILDING CONSULTANTS, INC.
P.O. Box 230 Valrico FL 33595
Phone No.: 813.659.9197

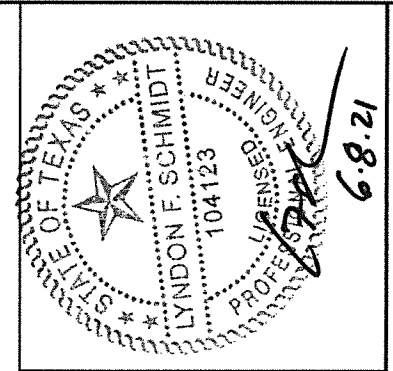
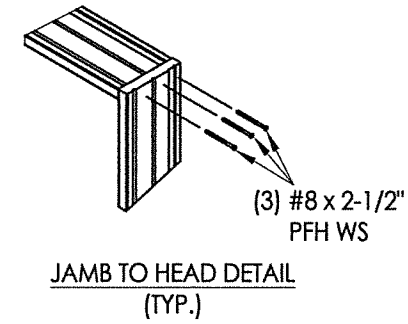
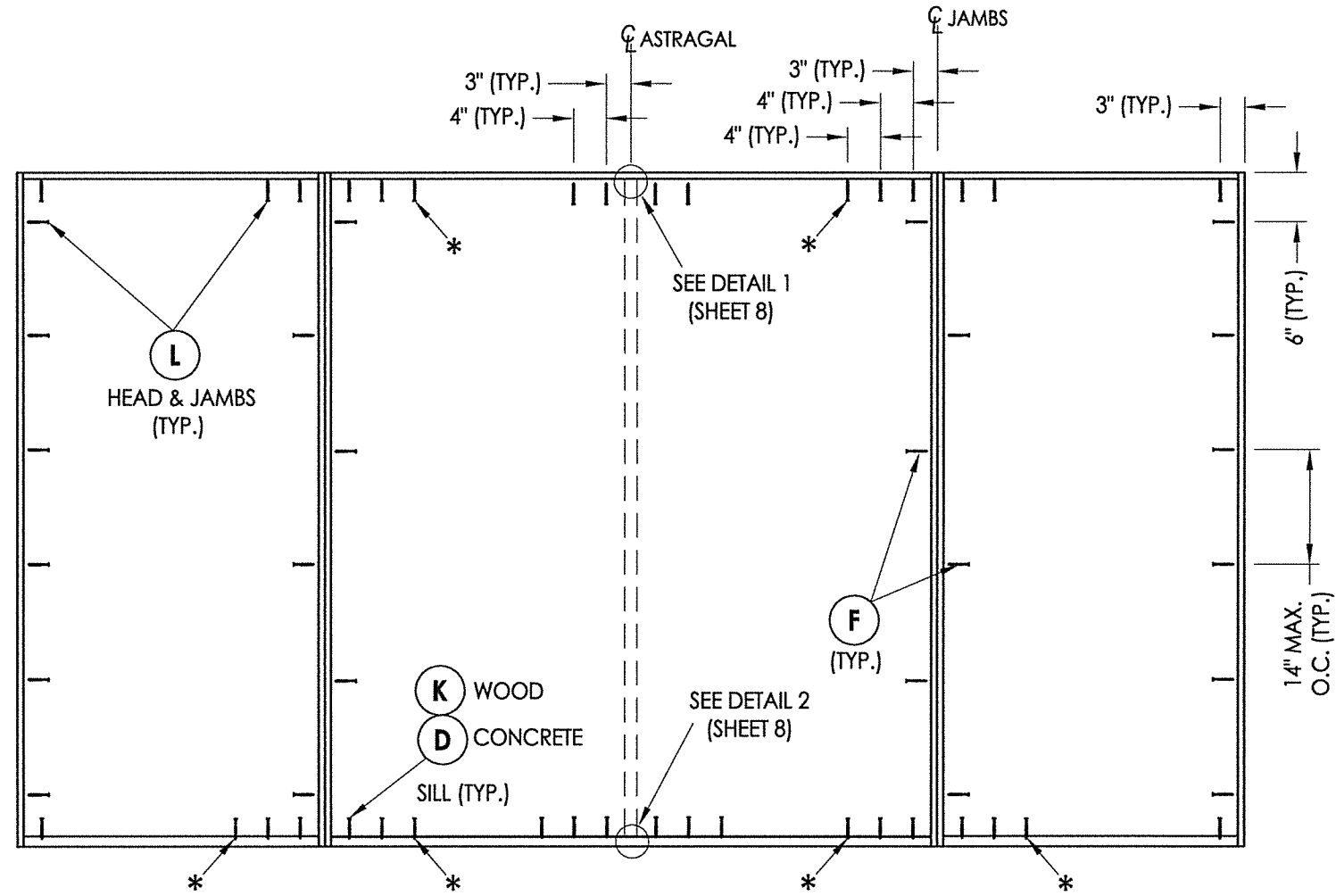
TEXAS BOARD OF PROFESSIONAL ENGINEERS
CERTIFICATE OF REGISTRATION # F-11852

PRODUCT: THERMA-TRU FIBERGLASS DOOR
PART OR ASSEMBLY: HORIZONTAL & VERTICAL CROSS SECTIONS (2X BUCK)

NO.	DATE	BY	REVISIONS

DATE: 5/27/21
SCALE: N.T.S.
DWG. BY: RW
CHK. BY: LFS
DRAWING NO.: TX-5213
SHEET 5 OF 10

© 2021 R.W. BUILDING CONSULTANTS INC.



Documents Prepared By: Lyndon F. Schmidt, P.E.
 TEXAS P.E. #104123

RW BUILDING CONSULTANTS, INC.
 P.O. Box 230 Valrico FL 33595
 Phone No.: 813.659.9197

TEXAS BOARD OF PROFESSIONAL ENGINEERS
 CERTIFICATE OF REGISTRATION # F-11852

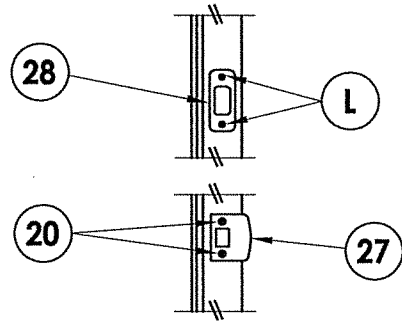
PRODUCT:	THERMA-TRU FIBERGLASS DOOR
PART OR ASSEMBLY:	FRAME ANCHORING

NO.	DATE	BY	REVISIONS

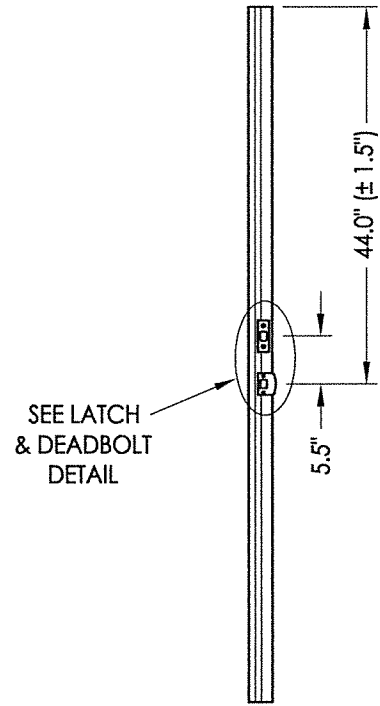
DATE: 5/27/21
 SCALE: N.T.S.
 DWG. BY: RW
 CHK. BY: LFS
 DRAWING NO.: TX-5213
 SHEET 7 OF 10

14" SIDELITE NOTES:
 * ANCHOR NOT REQUIRED FOR DOORS WITH 14" SIDELITES

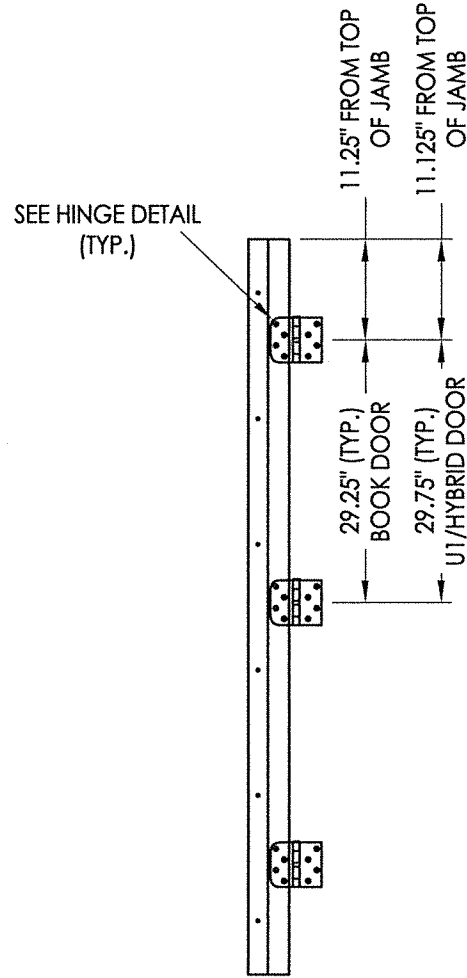
OXO
FRAME ANCHORING



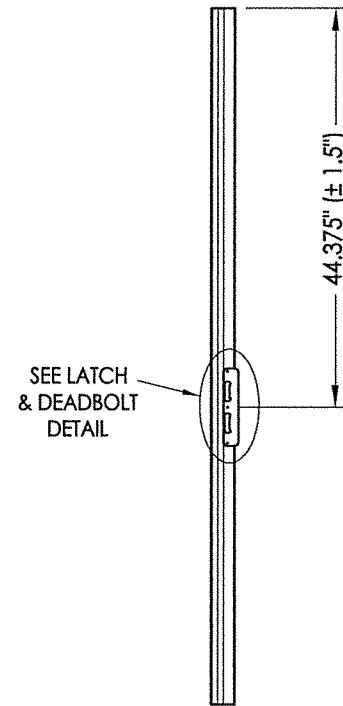
LATCH & DEADBOLT DETAIL
Schlage / Kwikset



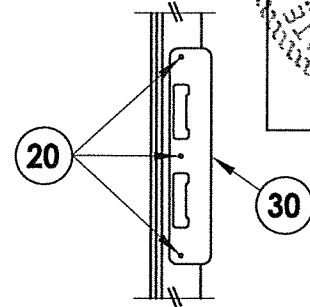
ASTRAGAL
Latch and Deadbolt



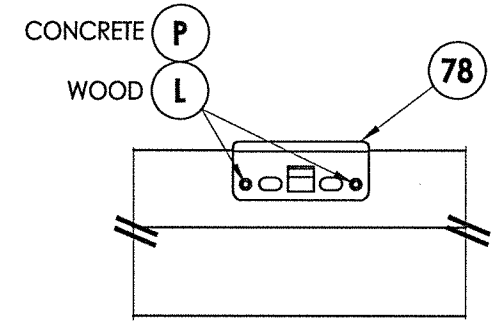
HINGE JAMB



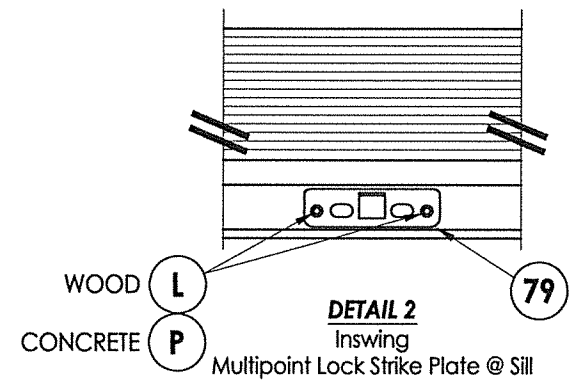
ASTRAGAL
Multipoint Lock



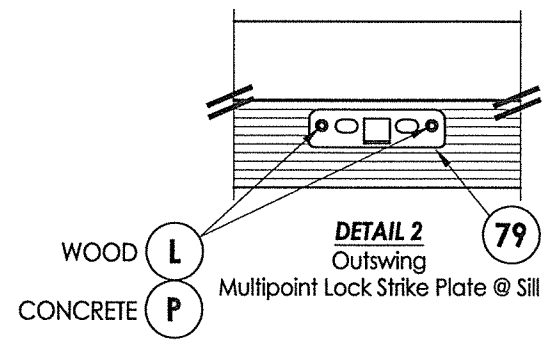
LATCH & DEADBOLT DETAIL
Multipoint Lock



DETAIL 1
Multipoint Lock Strike Plate @ Head

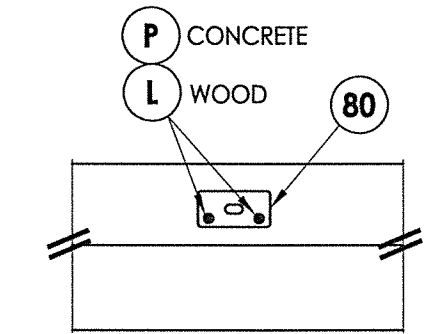


DETAIL 2
Inswing
Multipoint Lock Strike Plate @ Sill

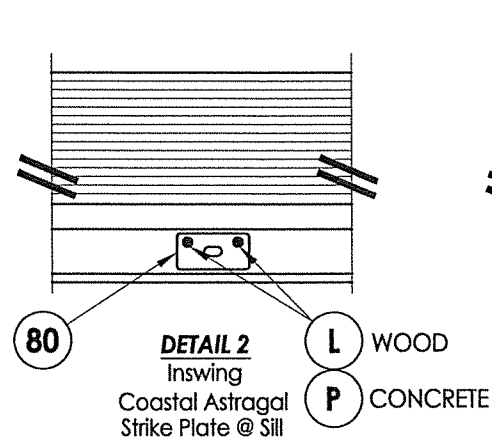


DETAIL 2
Outswing
Multipoint Lock Strike Plate @ Sill

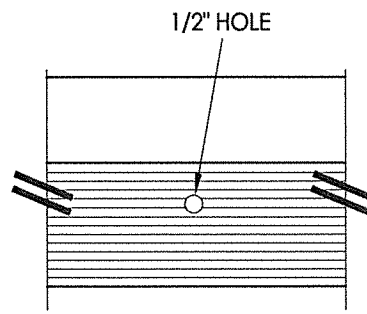
MULTIPOINT LOCK STRIKE DETAILS



DETAIL 1
Coastal Astragal Strike Plate @ Head

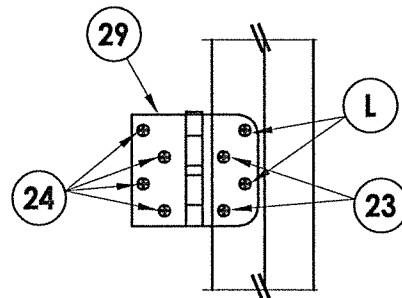


DETAIL 2
Inswing
Coastal Astragal Strike Plate @ Sill

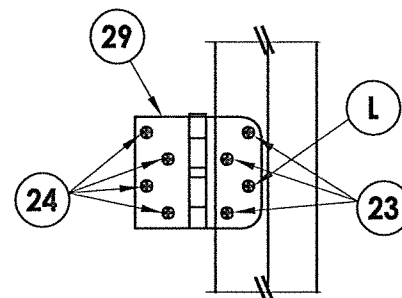


DETAIL 2
Outswing
Astragal Bolt Hole @ Sill

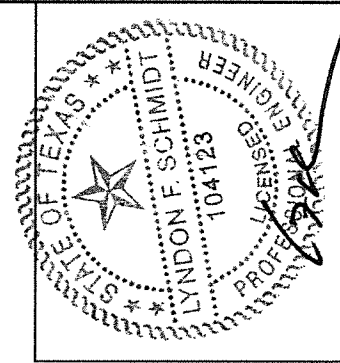
LATCH & DEADBOLT STRIKE DETAILS



HINGE DETAIL
Inswing



HINGE DETAIL
Outswing



6.8.21

Documents Prepared By: Lyndon F. Schmidt, P.E.
TEXAS P.E. #104123

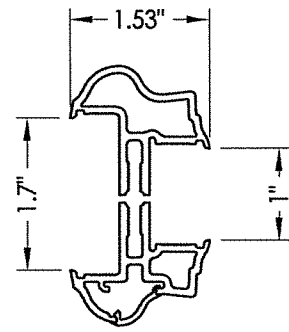
RW BUILDING CONSULTANTS, INC.
P.O. Box 230 Valrico FL 33595
Phone No.: 813.659.9197

TEXAS BOARD OF PROFESSIONAL ENGINEERS
CERTIFICATE OF REGISTRATION # F-11852

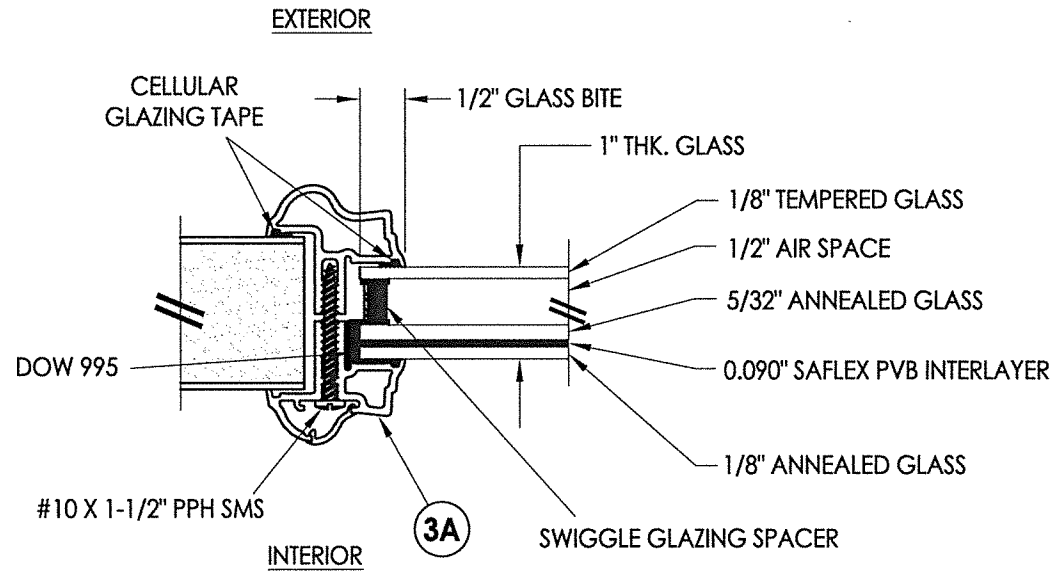
PRODUCT:	THERMA-TRU FIBERGLASS DOOR
PART OR ASSEMBLY:	HARDWARE DETAILS

NO.	DATE	BY	REVISIONS

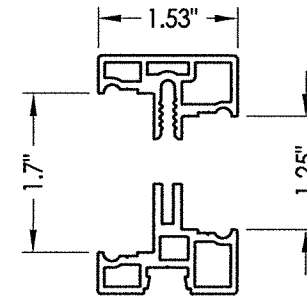
DATE:	5/27/21
SCALE:	N.T.S.
DWG. BY:	RW
CHK. BY:	LFS
DRAWING NO.:	TX-5213
SHEET	8 of 10



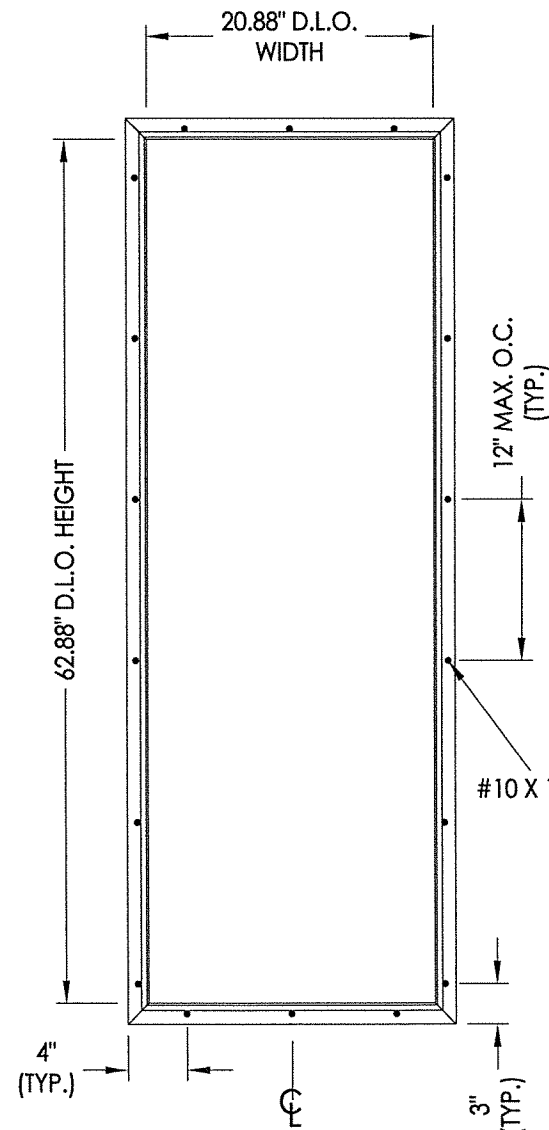
3A ALUMINUM FRAME
Aluminum Impact Lite Frame



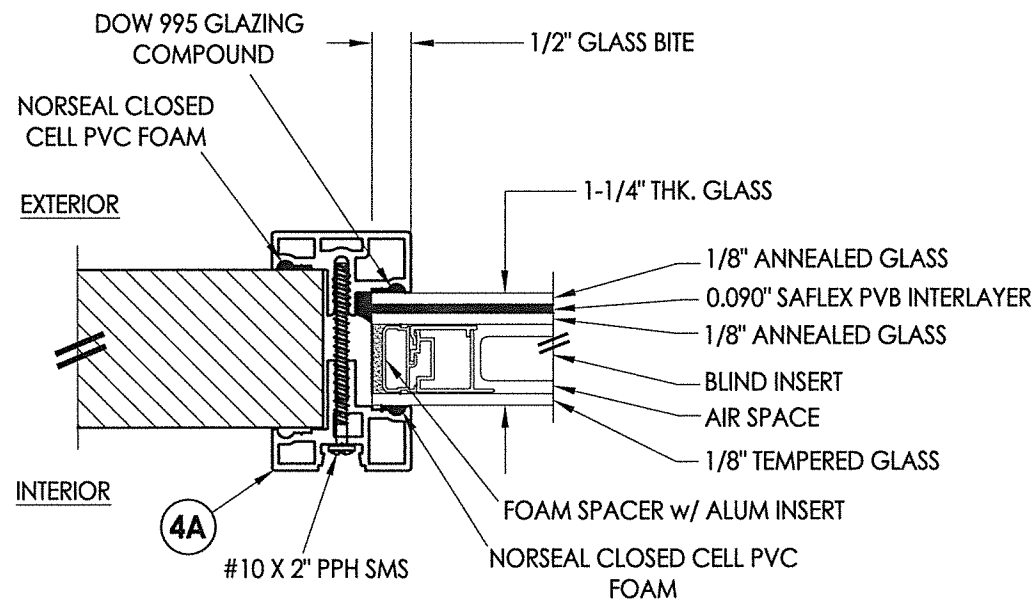
G1 GLAZING DETAIL
Aluminum Impact Lite Frame



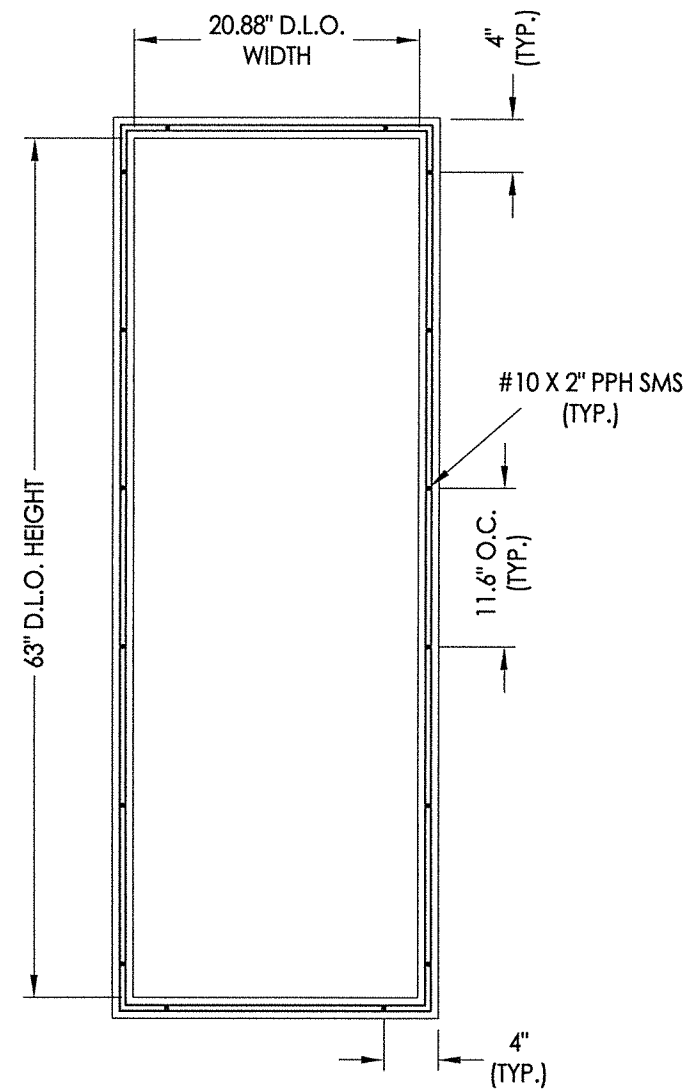
4A ALUMINUM FRAME
Aluminum Impact Lite Frame



3A ALUMINUM LITE FRAME*
(w/ 1\"/>



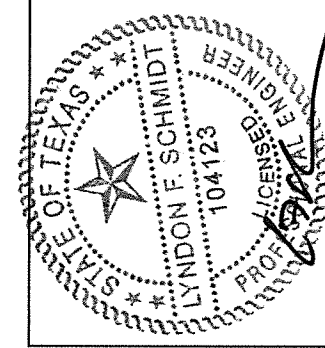
G2 GLAZING DETAIL
1-1/4\"/>



4A ALUMINUM LITE FRAME**
(w/ 1-1/4\"/>

14\"/>

- * 14\"/>
- ** 14\"/>



6-8-21

Documents Prepared By: Lyndon F. Schmidt, P.E.
TEXAS P.E. #104123

RW BUILDING CONSULTANTS, INC.
P.O. Box 230 Valrico FL, 33595
Phone No.: 813.659.9197

TEXAS BOARD OF PROFESSIONAL ENGINEERS
CERTIFICATE OF REGISTRATION # F-11852

PRODUCT:	Therma-TRU FIBERGLASS DOOR
PART OR ASSEMBLY:	LITE FRAME & GLAZING DETAILS

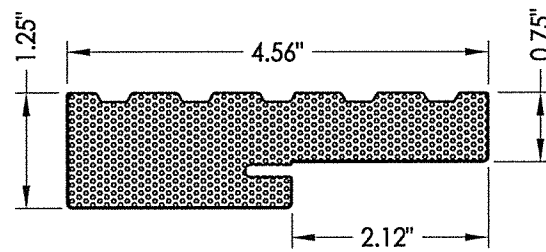
NO.	DATE	BY	REVISIONS

DATE:	5/27/21
SCALE:	N.T.S.
DWG. BY:	RW
CHK. BY:	LFS
DRAWING NO.:	TX-5213
SHEET	9 OF 10

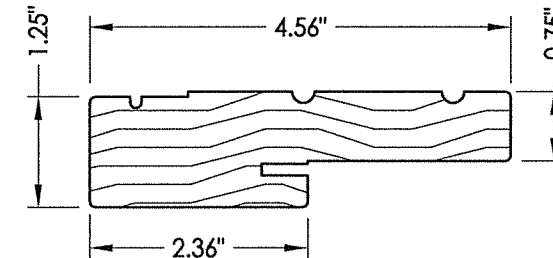
Z:\Clients\Therma Tru PERMANENT\B - Texas Dept of Ins\TDI - ID XXXX - 68 OP GLZ FG Imp Molded Open (TX 5209-5213)\C - Drawings\TX-5212-5213.dwg

BILL OF MATERIALS

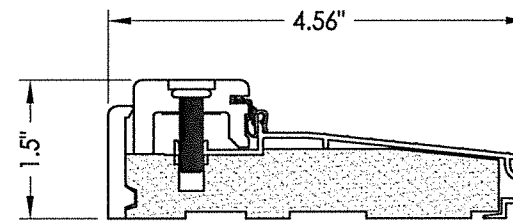
ITEM #	DESCRIPTION	MATERIAL
A	2X FRAMING (SG >= 0.42)	WOOD
C	1/4" MAX. SHIM SPACE	-
D	1/4" PFH DeWALT OR ITW CONCRETE SCREW (1-3/4" MIN. EMBEDMENT)	STEEL
F	#10 X 2" PFH WOOD SCREW	STEEL
K	#10 PFH WOOD SCREW (1-3/4" MIN. EMBEDMENT)	STEEL
L	#10 X 2-1/2" PFH WOOD SCREW (1.15" MIN. EMBEDMENT)	STEEL
P	3/16" PFH ITW CONCRETE SCREW (1-3/4" MIN. EMBEDMENT)	STEEL
1	COMPOSITE JAMB	COMP
2	WOOD JAMB (FINGER JOINT PINE)	WOOD
7	WEATHERSTRIP	FOAM
8	DOOR SWEEP	VINYL
9	SWEEP (USE w/ PUBLIC ACCESS THRESHOLD)	VINYL
10	#10 X 1-1/2" PPH SMS	STEEL
20	#8 X 2-1/2" PFH WOOD SCREW	STEEL
21	#12 X 1-1/2" PFH WOOD SCREW	STEEL
22	#8 X 3/4" PFH WOOD SCREW	STEEL
23	#9 X 3/4" PFH WOOD SCREW	STEEL
24	#9 X 1" PFH WOOD SCREW	STEEL
25	#9 X 2-1/2" PFH WOOD SCREW	STEEL
26	#8 X 5/8" PFH WOOD SCREW	STEEL
27	LATCH STRIKE PLATE	STEEL
28	DEADBOLT STRIKE PLATE	STEEL
28A	DEADBOLT SUB-STRIKE PLATE	STEEL
29	4" X 4" HINGE	STEEL
30	LATCH & DEADBOLT STRIKE PLATE	STEEL
32	INSWING THRESHOLD	ALUM/COMP
33	OUTSWING THRESHOLD	ALUM/COMP
34	PUBLIC ACCESS THRESHOLD	ALUM
35	SIDELITE SPACER (INSWING)	VINYL
36	SIDELITE SPACER (OUTSWING)	VINYL
40	DOOR PANEL (BOOK)	-
41	DOOR PANEL (HYBRID)	-
42	DOOR PANEL (U1)	-
44	COASTAL ASTRAGAL (THERMA-TRU)	ALUM
50	SIDELITE PANEL	-
78	MULTIPOINT LOCK STRIKE PLATE @ HEAD	STEEL
79	MULTIPOINT LOCK STRIKE PLATE @ SILL	STEEL
80	COASTAL ASTRAGAL STRIKE PLATE	STEEL



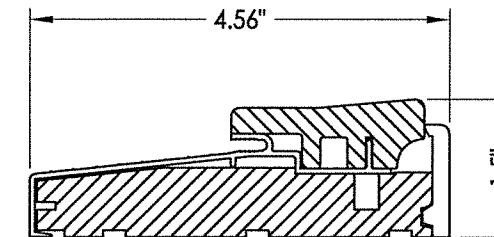
1 COMPOSITE JAMB



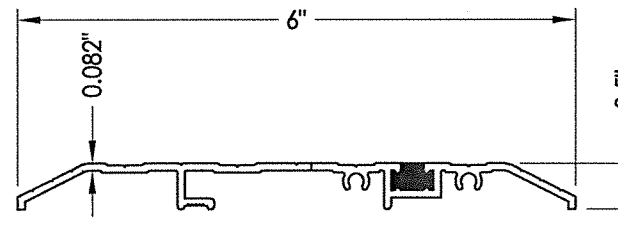
2 WOOD JAMB



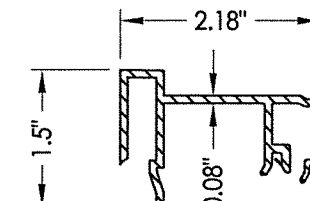
32 INSWING THRESHOLD
Adjustable Composite Sill



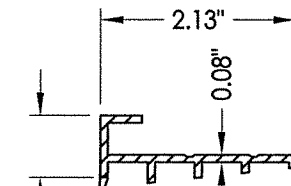
33 OUTSWING THRESHOLD
Composite Sill



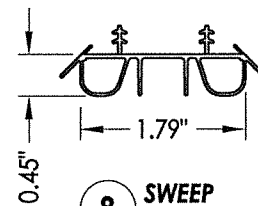
34 PUBLIC ACCESS THRESHOLD



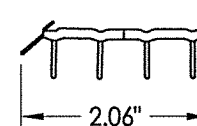
35 SIDELITE SPACER
Inswing



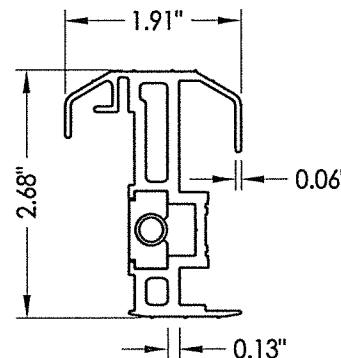
36 SIDELITE SPACER
Outswing



8 SWEEP



9 SWEEP



44 COASTAL ASTRAGAL

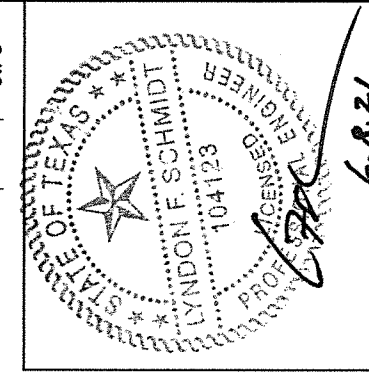
CONCRETE ANCHOR NOTES:

- Concrete anchor locations at the corners may be adjusted to maintain the min. edge distance to mortar joints.
- Concrete anchor locations noted as "MAX. ON CENTER" must be adjusted to maintain the min. edge distance to mortar joints, additional concrete anchors may be required to ensure the "MAX. ON CENTER" dimension are not exceeded.
- Concrete anchor table:

ANCHOR TYPE	ANCHOR SIZE	MIN. EMBEDMENT	MIN. CLEARANCE TO MASONRY EDGE	MIN. CLEARANCE TO ADJACENT ANCHOR
ITW TAPCON®	1/4"	1-1/4"	2"	4"
DeWALT ULTRACON®	1/4"	1-1/4"	1"	4"
ITW TAPCON®	3/16"	1-1/4"	AS SHOWN	1-1/2"

WOOD SCREW INSTALLATION NOTES:

- Maintain a minimum 5/8" edge distance, 1" end distance, & 1" o.c. spacing of wood screws to prevent the splitting of wood.



Documents Prepared By: Lyndon F. Schmidt, P.E.
TEXAS P.E. #104123

RW BUILDING CONSULTANTS, INC.
P.O. Box 230 Valrico FL 33595
Phone No.: 813.659.9197
TEXAS BOARD OF PROFESSIONAL ENGINEERS
CERTIFICATE OF REGISTRATION # F-11852

PRODUCT: THERMA-TRU FIBERGLASS DOOR
PART OR ASSEMBLY: BILL OF MATERIALS & COMPONENTS

NO.	DATE	BY	REVISIONS

DATE: 5/27/21

SCALE: N.T.S.

DWG. BY: RW

CHK. BY: LFS

DRAWING NO.:

TX-5213

SHEET 10 of 10