



**6000 SERIES, SLIDING PATIO DOOR,  
LARGE MISSILE IMPACT RESISTANT,  
BYPASS AND EXTERIOR POCKET,  
2, 3 & 4 TRACK CONFIGURATIONS  
MODELS 6250, 6350, 6450 & 6550**

**GENERAL NOTES:**

- 1) THIS PRODUCT HAS BEEN DESIGNED AND TESTED TO COMPLY WITH THE REQUIREMENTS OF THE 2018 INTERNATIONAL BUILDING CODE.
- 2) SHUTTERS ARE NOT REQUIRED WHEN USED IN WIND-BORNE DEBRIS REGIONS.
- 3) PRODUCT ANCHORS SHALL BE AS LISTED AND SPACED AS SHOWN ON DETAILS. ANCHOR EMBEDMENT TO BASE MATERIAL SHALL BE BEYOND WALL DRESSING OR STUCCO.
- 4) FOR 2X STUD FRAMING CONSTRUCTION, ANCHORING OF THESE UNITS SHALL BE THE SAME AS THAT SHOWN FOR 2X BUCK MASONRY CONSTRUCTION. 1X BUCKS ARE OPTIONAL, IF USED, INSTALLATION ANCHORS WILL GO THRU THE 1X INTO THE MASONRY CONSTRUCTION. CAN INSTALL DIRECTLY INTO MASONRY WITH A 1/4" MAX SHIM.
- 5) DESIGN PRESSURES:
  - A. NEGATIVE DESIGN LOADS BASED ON STRUCTURAL TEST PRESSURE, FRAME ANALYSIS AND GLASS PER ASTM E1300.
  - B. POSITIVE DESIGN LOADS BASED ON WATER TEST PRESSURE, STRUCTURAL TEST PRESSURE, FRAME ANALYSIS AND GLASS PER ASTM E1300.
- 6) THE ANCHORAGE METHODS SHOWN HAVE BEEN DESIGNED TO RESIST THE WINDLOADS CORRESPONDING TO THE REQUIRED DESIGN PRESSURE. THE 33-1/3% STRESS INCREASE HAS NOT BEEN USED IN THE DESIGN OF THIS PRODUCT. THE 1.6 LOAD DURATION FACTOR WAS USED FOR THE EVALUATION OF ANCHORS INTO WOOD. ANCHORS THAT COME INTO CONTACT WITH OTHER DISSIMILAR MATERIALS SHALL BE COATED OR CORROSION RESISTANT AS SPECIFIED IN THE 2018 INTERNATIONAL BUILDING CODE.
- 7) SIZES MUST BE VERIFIED FOR COMPLIANCE WITH EGRESS REQUIREMENTS PER THE INTERNATIONAL BUILDING CODE.

TABLE 1: DESIGN PRESSURES

Nominal Panel Size		Interlayer Type	Design Pressure		Certification Number
Width	Height		(+) psf	(-) psf	
56"	93.125"	.090" PVB	40	55	NI014866
56"	93.125"	.090" SG	45	50	NI014866.01

TABLE 2: SILL RISER TESTED PRESSURE

Water Performance		
Sill Riser	Sill Height	Max. Tested Pressure
Standard	2.81"	7.5 psf
High Dam	4"	9.0 psf

TABLE 3: INSTALLATION ANCHORS

Anchor Type	Substrate	Min. Embedment	Min. Edge Distance	Min. On Center
1/4" Elco Ultracon and Ultracon+	Concrete/CMU	1-3/8"	1-1/8"	4"
#10 SMS	Wood	1-3/8"	1-1/8"	1"
#10 SMS	Steel Stud	.056"	5/8"	1"

**ANCHOR NOTES:**

- 1) CONCRETE ANCHOR LOCATIONS AT THE CORNERS MAY BE ADJUSTED TO MAINTAIN THE MINIMUM EDGE DISTANCE TO MORTOR JOINTS.
- 2) CONCRETE ANCHOR LOCATIONS NOTED AS "MAX. ON CENTER" MUST BE ADJUSTED TO MAINTAIN THE MINIMUM EDGE DISTANCE TO MORTOR JOINTS, ADDITIONAL CONCRETE ANCHORS MAY BE REQUIRED TO ENSURE THE "MAX. ON CENTER" DIMENSION IS NOT EXCEEDED.
- 3) SHEET METAL SCREWS MUST PENETRATE A MIN. OF 3 THREADS THRU THE STEEL STUD.



A. LYNN MILLER, P.E., P.E.# 106954  
 1070 TECHNOLOGY DR  
 N. VENICE, FL 34275  
 (941) 480-1600  
 COPYRIGHT © 2020  
 NEWSOUTH WINDOW SOLUTIONS  
 LIMITED LICENSE TO MAKE COPIES  
 FOR PERMITTING

**6000 SERIES SLIDING GLASS DOOR**  
 GENERAL NOTES, DESIGN PRESSURES,  
 AND ANCHORS  
 NEWSOUTH WINDOW SOLUTIONS  
 10741 CROSSROADS COMMERCE BLVD.  
 TAMPA, FL 33610

GENERAL NOTES.....	1
DP & ANCHOR TABLES.....	1
CONFIGURATIONS.....	2
SIZING TABLE.....	2
SECTION VIEWS.....	3-4
GLAZING DETAILS.....	4
2x BUCK ANCHORAGE.....	5
FRAME ANCHORAGE.....	6-8
EXTRUSIONS.....	9
BILL OF MATERIALS.....	9

BY:				
REVISION:				
DATE:				
#:				
DATE:	06/04/2020			
SCALE:	NTS			
BY:	E KOSS			
DRAWING #:	SGD6000LMI - TDI			
SHEET:	1 OF 9			



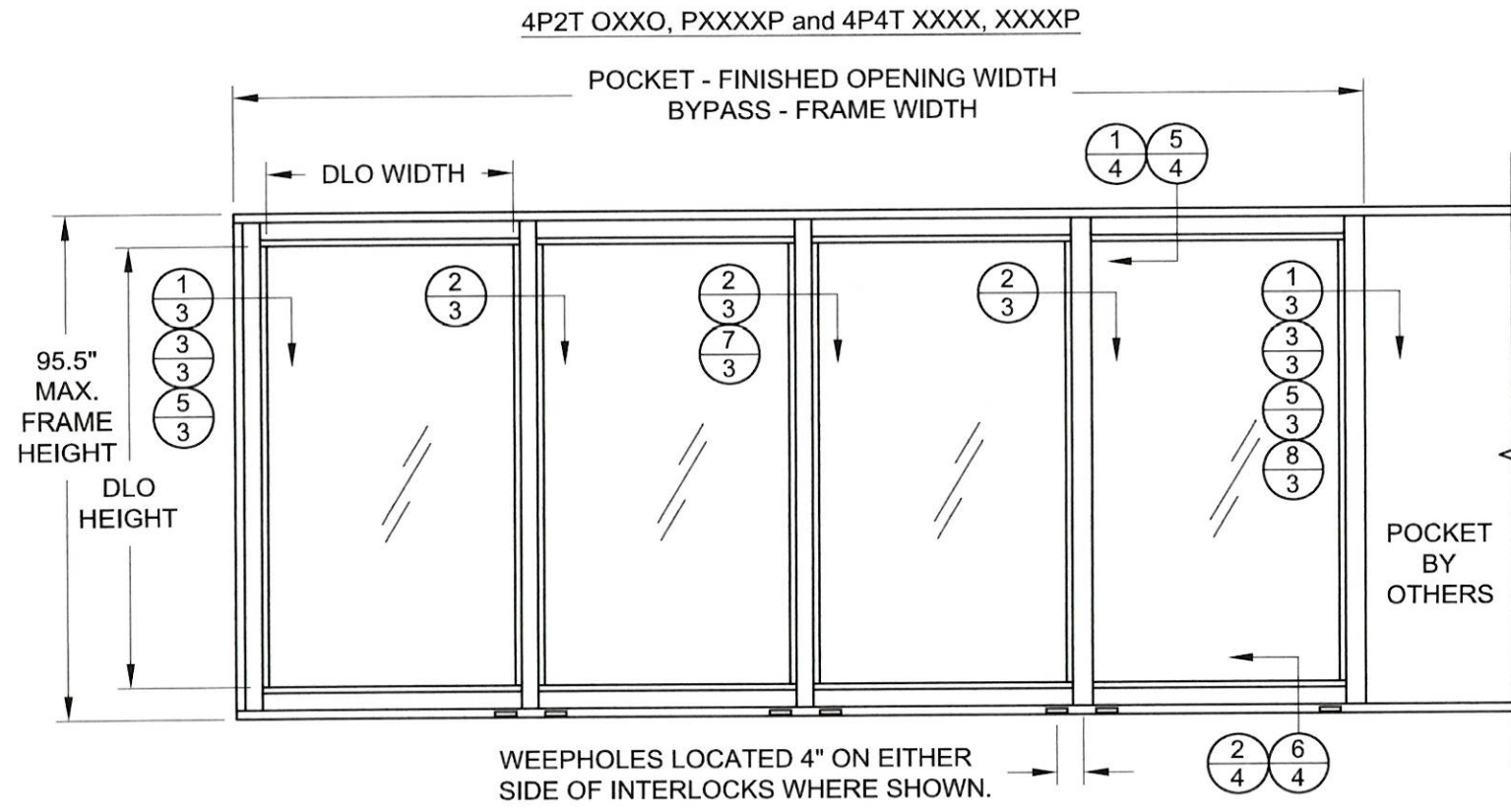
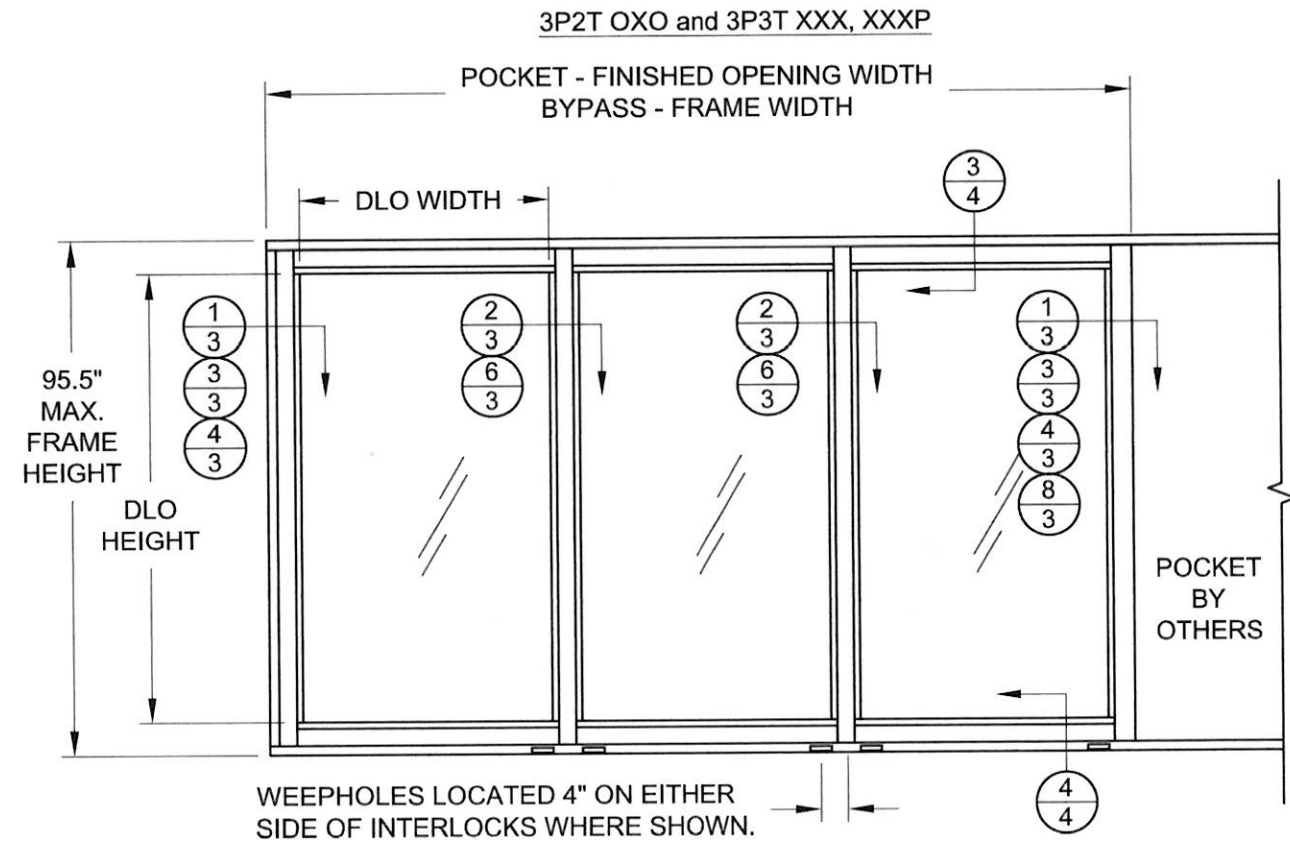
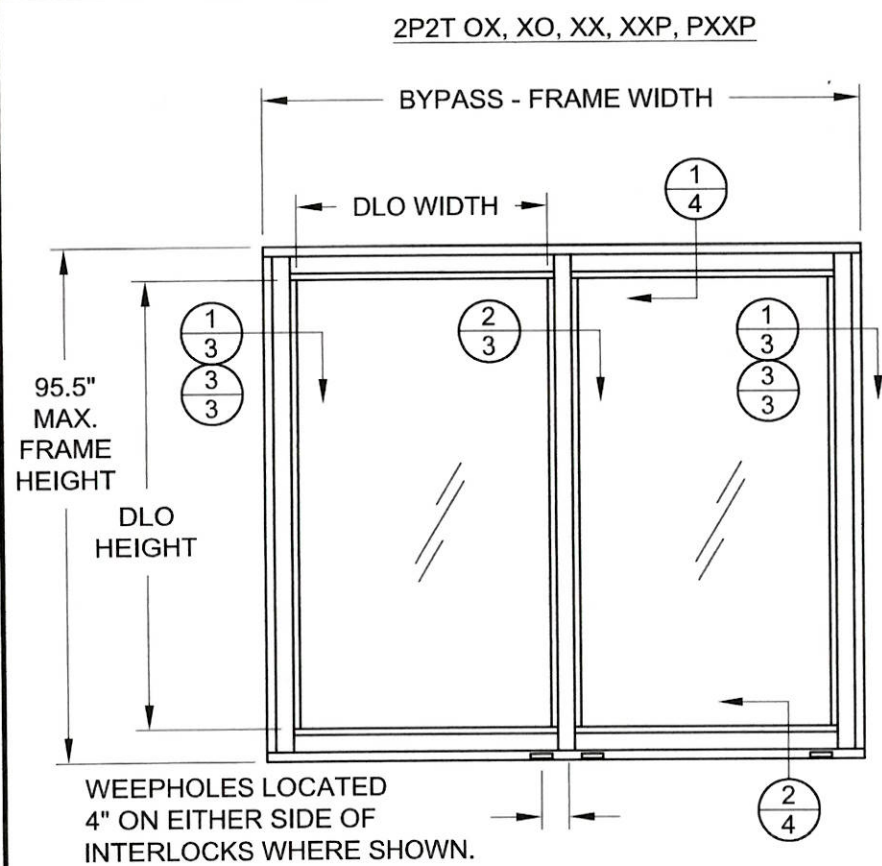


TABLE 3: PANEL DLO, FRAME/FINISHED OPENING WIDTHS

Configuration	Finished Frame Width (in)			
	DLO Width			
	33.438	39.438	43.438	46.200
1P2T XP	39.580	45.580	49.580	52.340
2P2T XO, OX, XX	84.00	96.00	104.00	109.53
2P2T XXP	77.98	89.98	97.98	103.50
2P2T PX XP	77.50	89.50	97.50	103.02
3P2T OXO	128.32	146.32	158.32	166.60
3P3T XXX	122.40	140.40	152.40	160.69
3P3T XXXP	116.38	134.38	146.38	154.66
4P2T OX XO	166.34	190.34	206.34	217.39
4P2T PXX XP	154.29	167.79	183.79	194.84
4P4T XXXX	160.80	184.80	200.80	211.85
4P4T XXXXP	154.78	178.78	194.78	205.82

NOT ALL CONFIGURATIONS SHOWN IN ELEVATIONS.

CONFIGURATION NOTES:

- 1) SINGLE EXTERIOR POCKET CAN BE EITHER LEFT OR RIGHT.
- 2) POCKET WALL OR CAVITY IS NOT PART OF THIS APPROVAL AND IS TO BE DESIGNED BY OTHERS AND REVIEWED BY THE AUTHORITY HAVING JURISDICTION.



A. LYNN MILLER, P.E., P.E.# 106954  
 1070 TECHNOLOGY DR  
 N. VENICE, FL 34275  
 (941)-480-1600  
 COPYRIGHT © 2020  
 NEWSOUTH WINDOW SOLUTIONS  
 LIMITED LICENSE TO MAKE COPIES  
 FOR PERMITTING

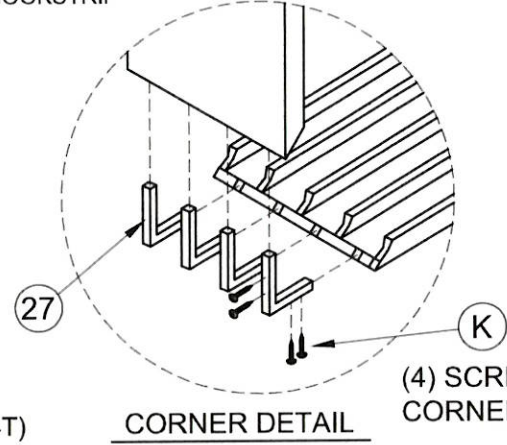
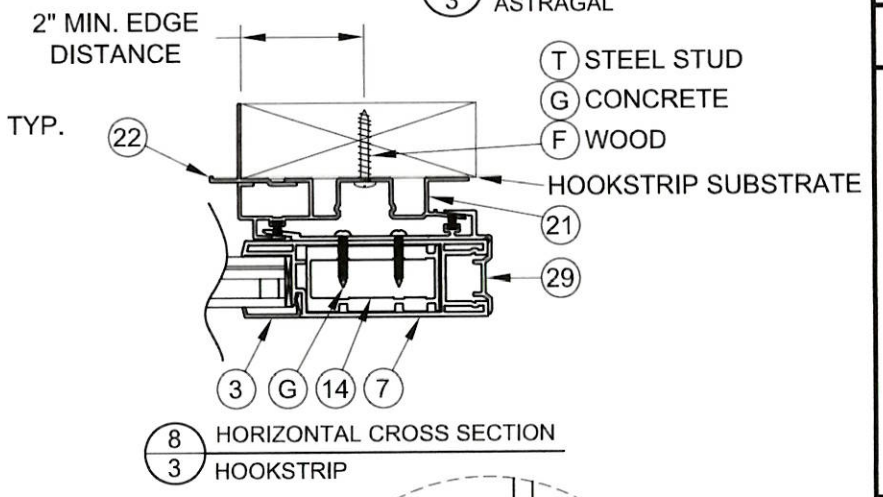
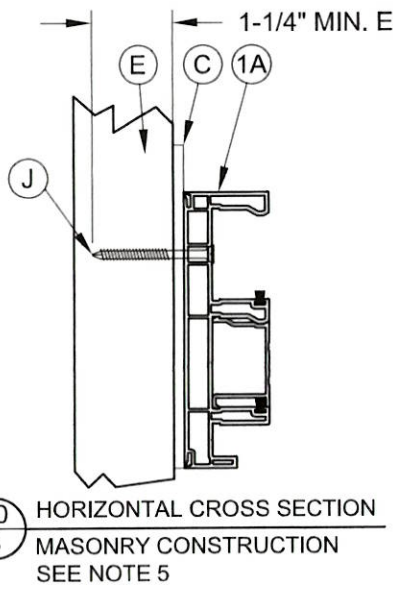
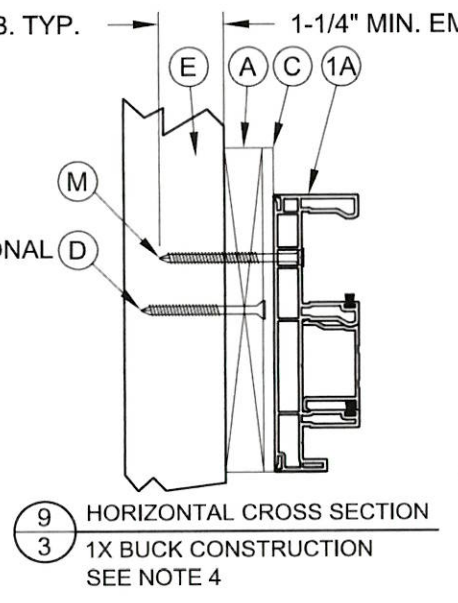
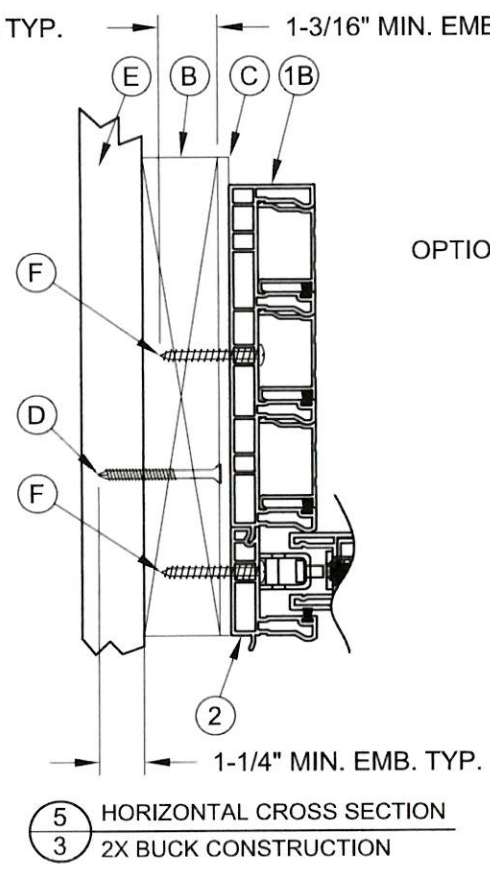
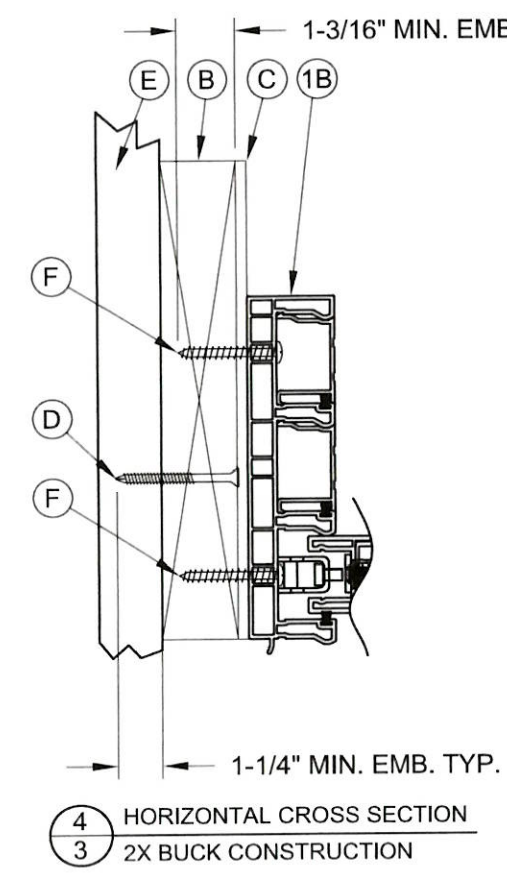
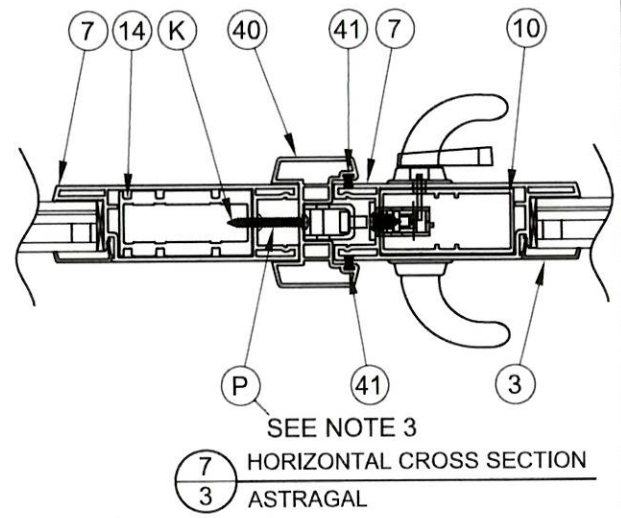
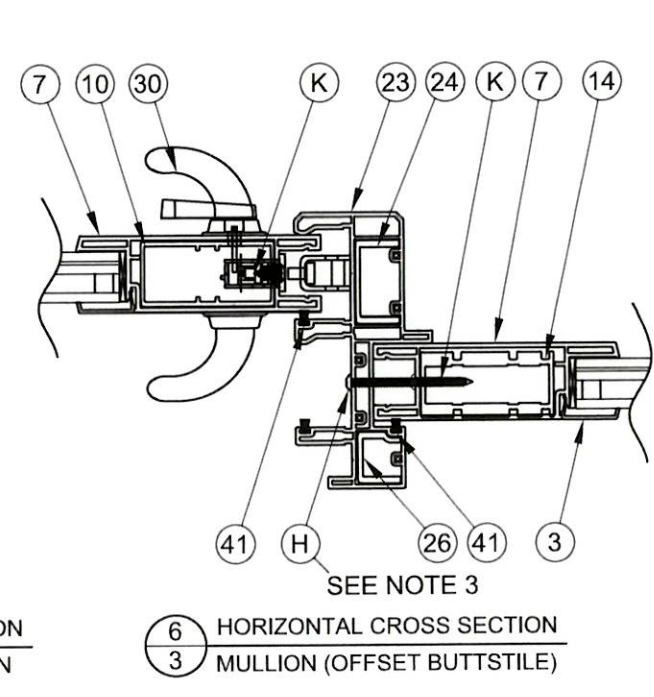
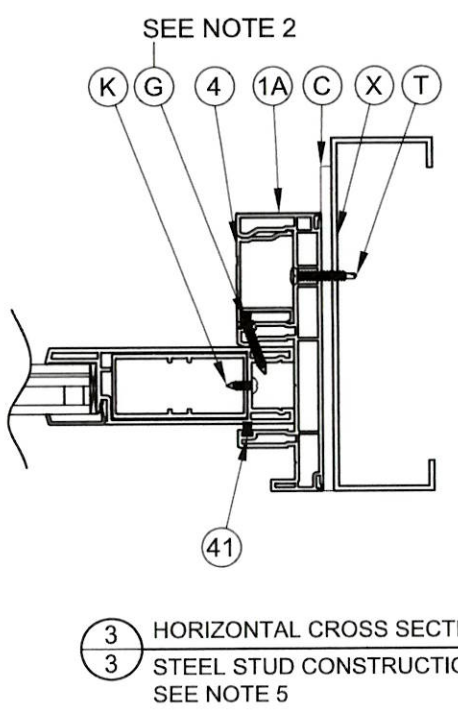
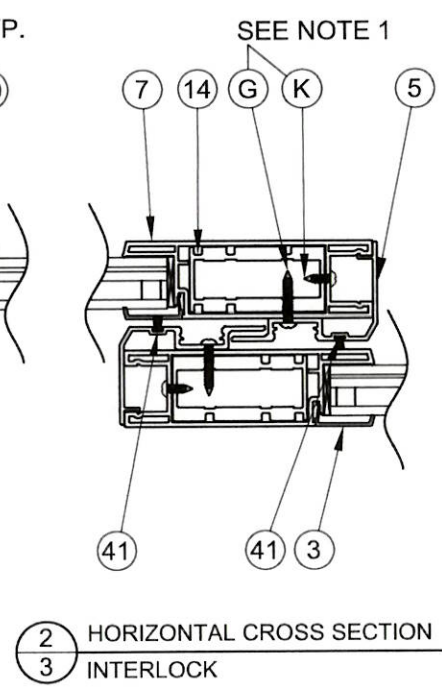
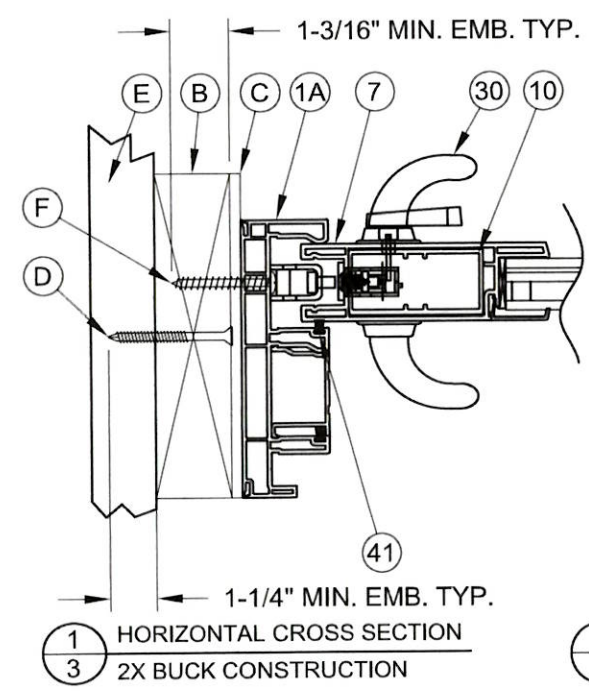
6000 SERIES SLIDING GLASS DOOR	BY:	
CONFIGURATIONS AND SIZING	REVISION:	
NEWSOUTH WINDOW SOLUTIONS 10741 CROSSROADS COMMERCE BLVD. TAMPA, FL 33610	DATE:	
	#:	
	DATE:	06/04/2020
	SCALE:	NTS
	BY:	E KOSS
	DRAWING #:	SGD6000LMI - TD1
	SHEET:	2 OF 9





A. LYNN MILLER, P.E., P.E.# 106954  
 1070 TECHNOLOGY DR  
 N. VENICE, FL 34275  
 (941)-480-1600  
 PROFESSIONAL ENGINEER  
 LICENSED  
 106954  
 ANTHONY LYNN MILLER  
 STATE OF TEXAS

COPYRIGHT © 2020  
 NEWSOUTH WINDOW SOLUTIONS  
 LIMITED LICENSE TO MAKE COPIES  
 FOR PERMITTING



**NOTES:**

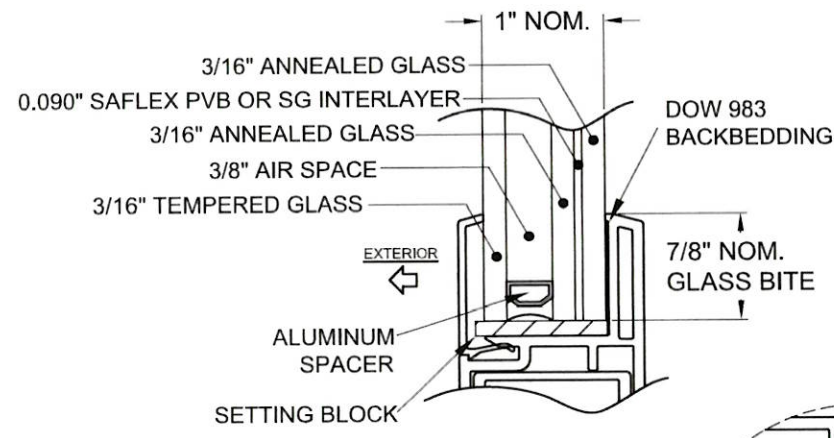
- 1) INTERLOCK REINFORCEMENT SCREWS, G & K, ARE LOCATED 3" FROM EACH END THEN 14.5" ON CENTER.
- 2) FIXED PANEL IN JAMB SCREWS, G, ARE LOCATED 8" FROM EACH END AND THEN 4 MORE EQUALLY SPACED (6 TOTAL)
- 3) FIXED PANEL IN MULLION SCREWS, H, AND FIXED PANEL IN ASTRAGAL SCREWS, P, ARE LOCATED 6" FROM EACH END AND THEN 12" ON CENTER.
- 4) FOR INSTALLATION INTO 1X BUCK CONSTRUCTION, BUCK TO CONCRETE ANCHORS (IF USED) MUST BE AT LEAST 4" FROM PRODUCT INSTALLATION ANCHORS THRU 1X BUCK INTO MASONRY AND FOLLOW MASONRY ANCHOR REQUIREMENTS FROM TABLE 3. APPLIES TO ALL FRAMES.
- 5) STEEL STUD AND DIRECT TO MASONRY APPLIES TO ALL FRAMES - SEE SECTIONS ABOVE AND SHEETS 6-8 FOR ANCHORAGE FOR EACH FRAME TYPE. (2T, 3T, 4T)

6000 SERIES SLIDING GLASS DOOR	
HORIZONTAL SECTIONS, CORNER KEY DETAIL	
NEWSOUTH WINDOW SOLUTIONS 10741 CROSSROADS COMMERCE BLVD. TAMPA, FL 33610	
BY:	
REVISION:	
DATE:	
#:	
DATE:	06/04/2020
SCALE:	1:4
BY:	E KOSS
DRAWING #:	SGD6000LMI - TD1
SHEET:	3 OF 9

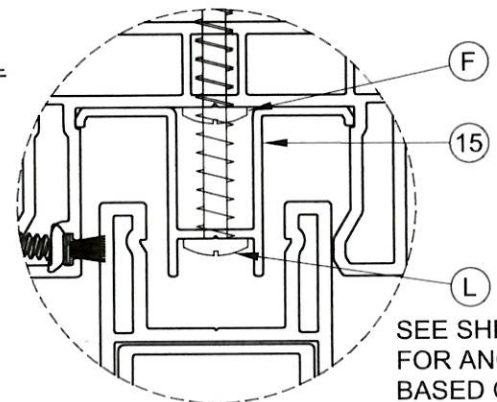




A. LYNN MILLER, P.E., P.E.# 106954  
 1070 TECHNOLOGY DR  
 N. VENICE, FL 34275  
 (941)-480-1600  
 NEWSOUTH WINDOW SOLUTIONS  
 LIMITED LICENSE TO MAKE COPIES  
 FOR PERMITTING



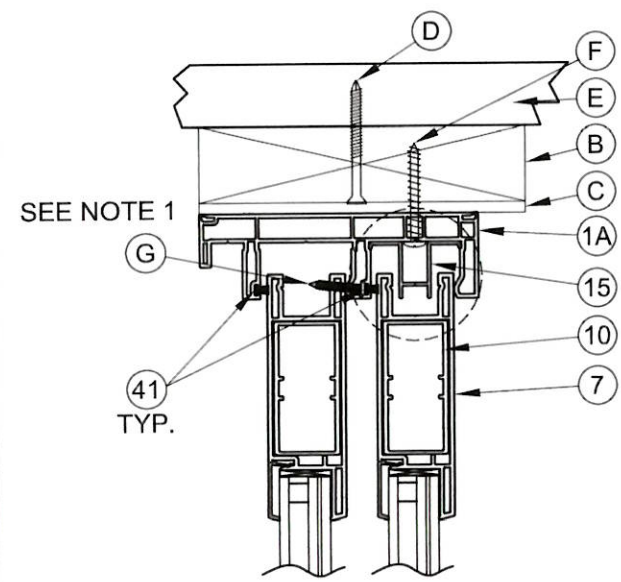
GLAZING DETAIL



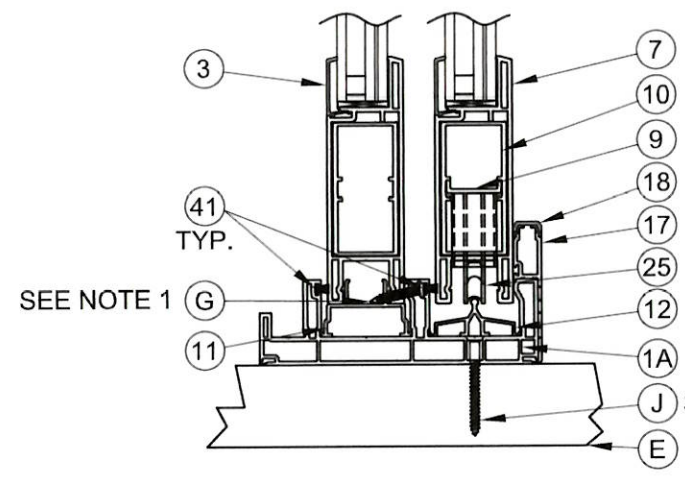
DETAIL 1: ANCHOR THRU ANTI-LIFT BLOCK

SEE SHEETS 6-8 FOR ANCHOR TYPE BASED ON SUBSTRATE

1 VERTICAL CROSS SECTION  
 4 2X BUCK CONSTRUCTION

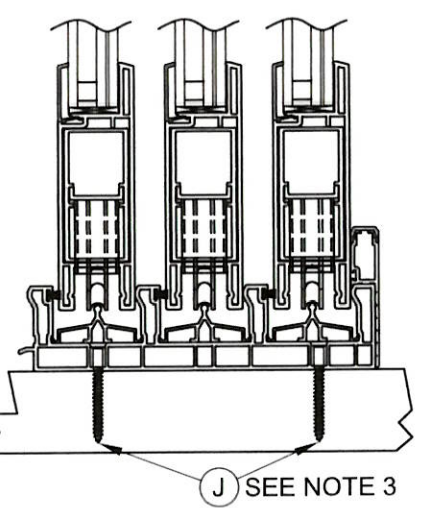
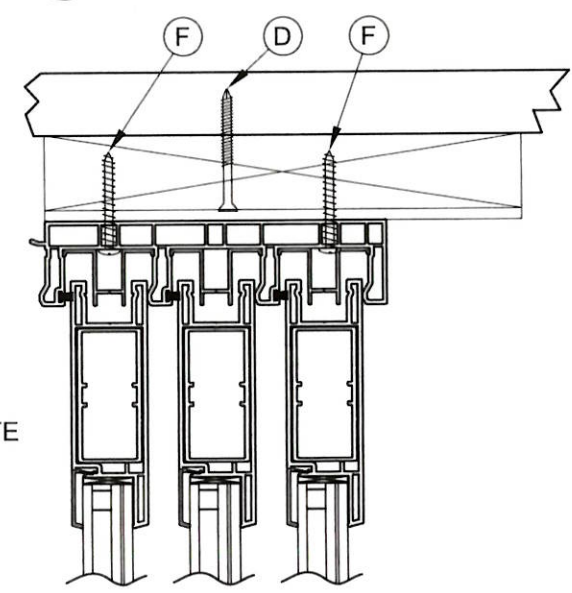


SEE NOTE 2 AND DETAIL 1



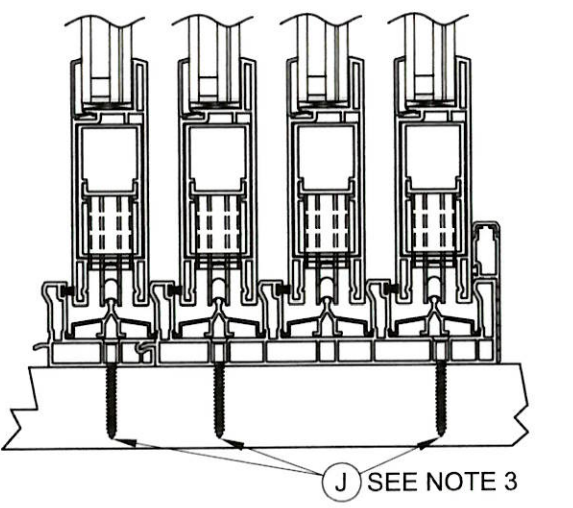
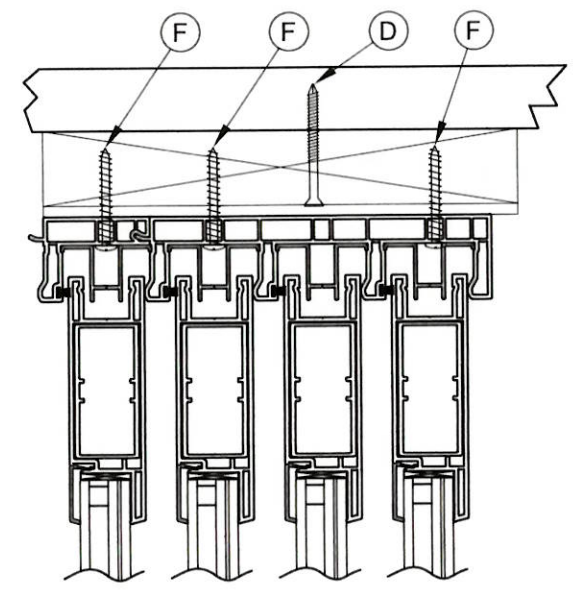
2 VERTICAL CROSS SECTION  
 4 MASONRY CONSTRUCTION

3 VERTICAL CROSS SECTION  
 4 2X BUCK CONSTRUCTION



4 VERTICAL CROSS SECTION  
 4 MASONRY CONSTRUCTION

5 VERTICAL CROSS SECTION  
 4 2X BUCK CONSTRUCTION



6 VERTICAL CROSS SECTION  
 4 MASONRY CONSTRUCTION

NOTES:

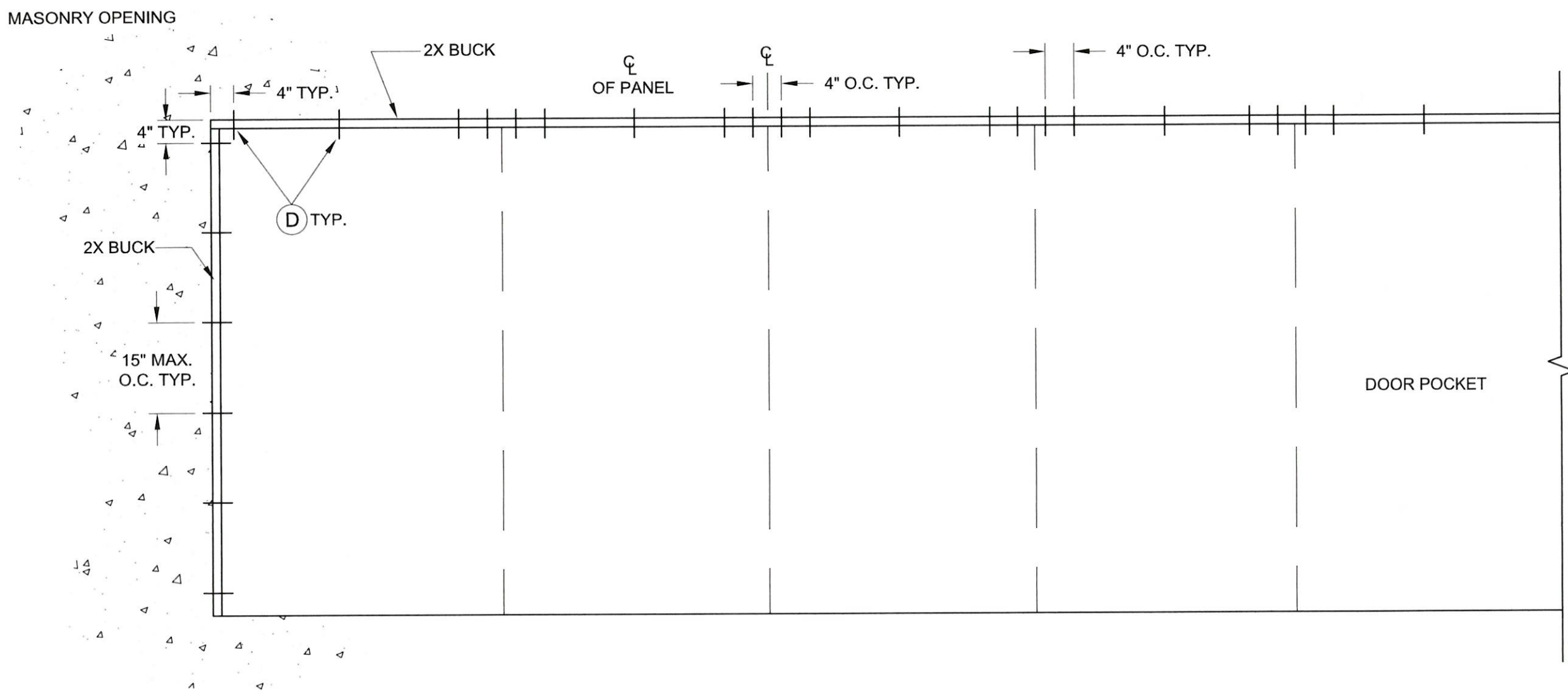
- 1) FIXED PANEL SCREW INTO HEAD AND SILL, G, LOCATED 3" AND 6" FROM JAMB AND THEN 6", 9" AND 12" FROM THE INTERLOCK.
- 2) ANCHOR THRU ANTI-LIFT BLOCK (ITEM #15) NOT SHOWN FOR CLARITY. REFER TO SHEETS 6-8 FOR ANCHOR TYPE.
- 3) FLAT HEAD ANCHORS MUST BE USED IN SILL, ALL OTHERS INTERFERE WITH ROLLER TRACK.
- 4) FOR INSTALLATION INTO 1X BUCK CONSTRUCTION, BUCK TO CONCRETE ANCHORS (IF USED) MUST BE AT LEAST 4" FROM PRODUCT INSTALLATION ANCHORS THRU 1X BUCK INTO MASONRY AND FOLLOW MASONRY ANCHOR REQUIREMENTS FROM TABLE 3. APPLIES TO ALL FRAMES.
- 5) DIRECT TO MASONRY APPLIES TO ALL FRAMES.

6000 SERIES SLIDING GLASS DOOR	BY:	
VERTICAL SECTIONS, GLAZING DETAIL	REVISION:	
NEWSOUTH WINDOW SOLUTIONS 10741 CROSSROADS COMMERCE BLVD. TAMPA, FL 33610	DATE:	
	#:	
	DATE:	06/04/2020
	SCALE:	NTS
	BY:	E KOSS
	DRAWING #:	SGD6000LMI - TDI
	SHEET:	4 OF 9





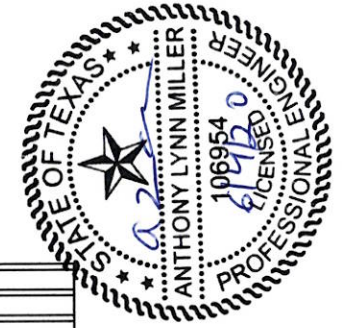
A. LYNN MILLER, P.E., P.E.# 106954  
 1070 TECHNOLOGY DR  
 N. VENICE, FL 34275  
 (941) 480-1600  
 COPYRIGHT © 2020  
 NEWSOUTH WINDOW SOLUTIONS  
 LIMITED LICENSE TO MAKE COPIES  
 FOR PERMITTING



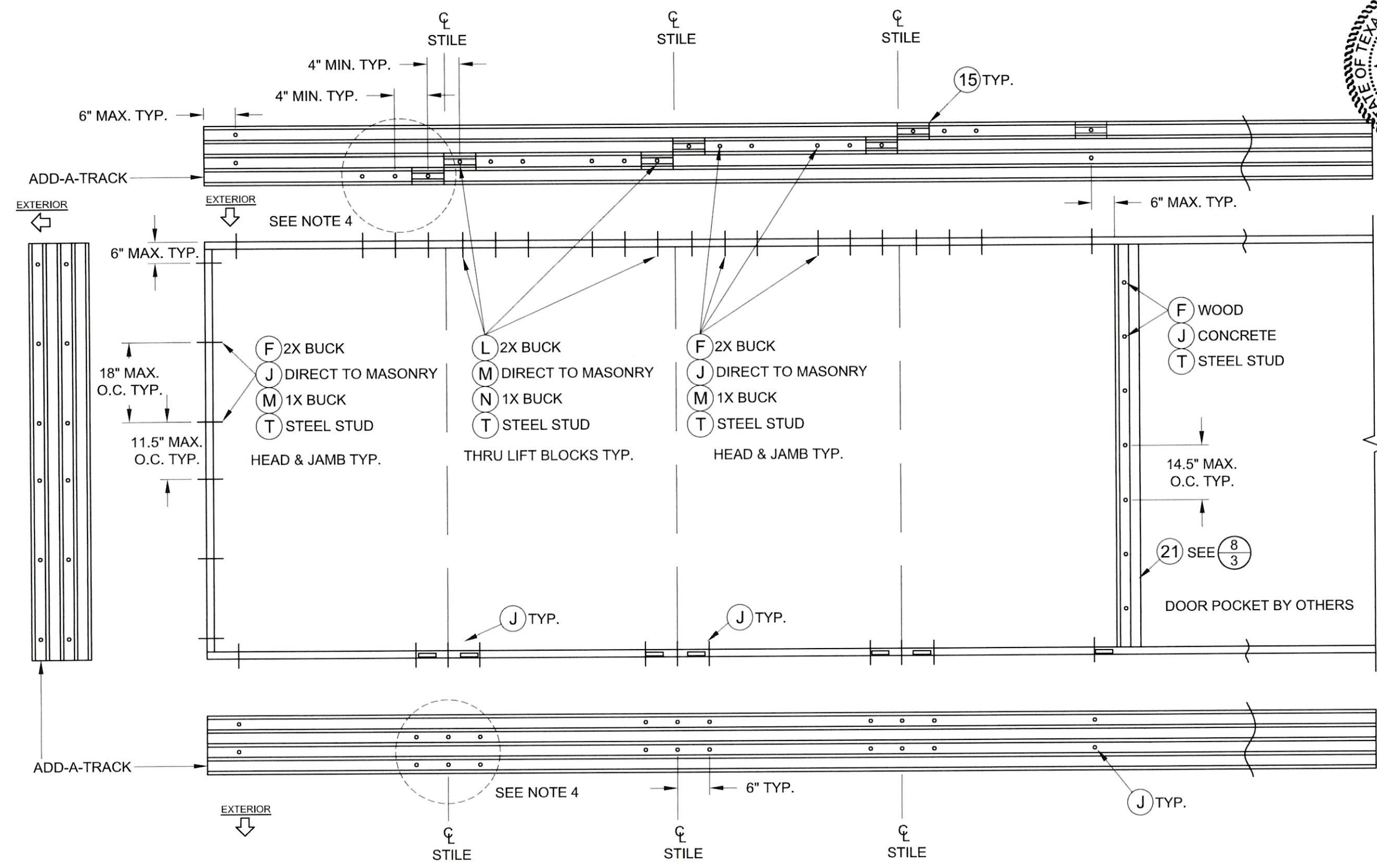
BUCK ANCHORAGE DETAIL

**NOTE:**  
 1) 1X BUCK CONSTRUCTION, BUCK TO CONCRETE ANCHORS (IF USED) MUST BE AT LEAST 4" FROM PRODUCT INSTALLATION ANCHORS THRU 1X BUCK INTO MASONRY AND FOLLOW MASONRY ANCHOR REQUIREMENTS FROM TABLE 2.

BY:	6000 SERIES SLIDING GLASS DOOR
REVISION:	BUCK ANCHORING
DATE:	NEWSOUTH WINDOW SOLUTIONS 10741 CROSSROADS COMMERCE BLVD. TAMPA, FL 33610
#:	
DATE:	06/04/2020
SCALE:	NTS
BY:	E KOSS
DRAWING #:	SGD6000LMI - TDI
SHEET:	5 OF 9



A. LYNN MILLER, P.E., P.E.# 106954  
 1070 TECHNOLOGY DR  
 N. VENICE, FL 34275  
 (941) 480-1600  
 COPYRIGHT © 2020  
 NEWSOUTH WINDOW SOLUTIONS  
 LIMITED LICENSE TO MAKE COPIES  
 FOR PERMITTING



- NOTES:**
- 1) ANTI-LIFT BLOCKS (ITEM #15) REQ'D ABOVE ALL ACTIVE PANELS (X).
  - 2) STAGGER ANCHORS ABOUT INTERLOCK CENTERLINES - MIN. 4" O.C., ANCHOR THRU ANTI-LOCK BLOCKS AT HEAD.
  - 3) FOR BYPASS ANCHORAGE, DISMISS THE CLUSTERS NEAR THE POCKET (SHOWN ON RIGHT) AND REPLACE WITH END CLUSTERS (SHOWN ON LEFT)
  - 4) CLUSTER ANCHORS MUST GO THRU THE ADD-A-TRACK WHEN THERE IS AN OPERABLE PANEL PRESENT IN THE ADD-A-TRACK.

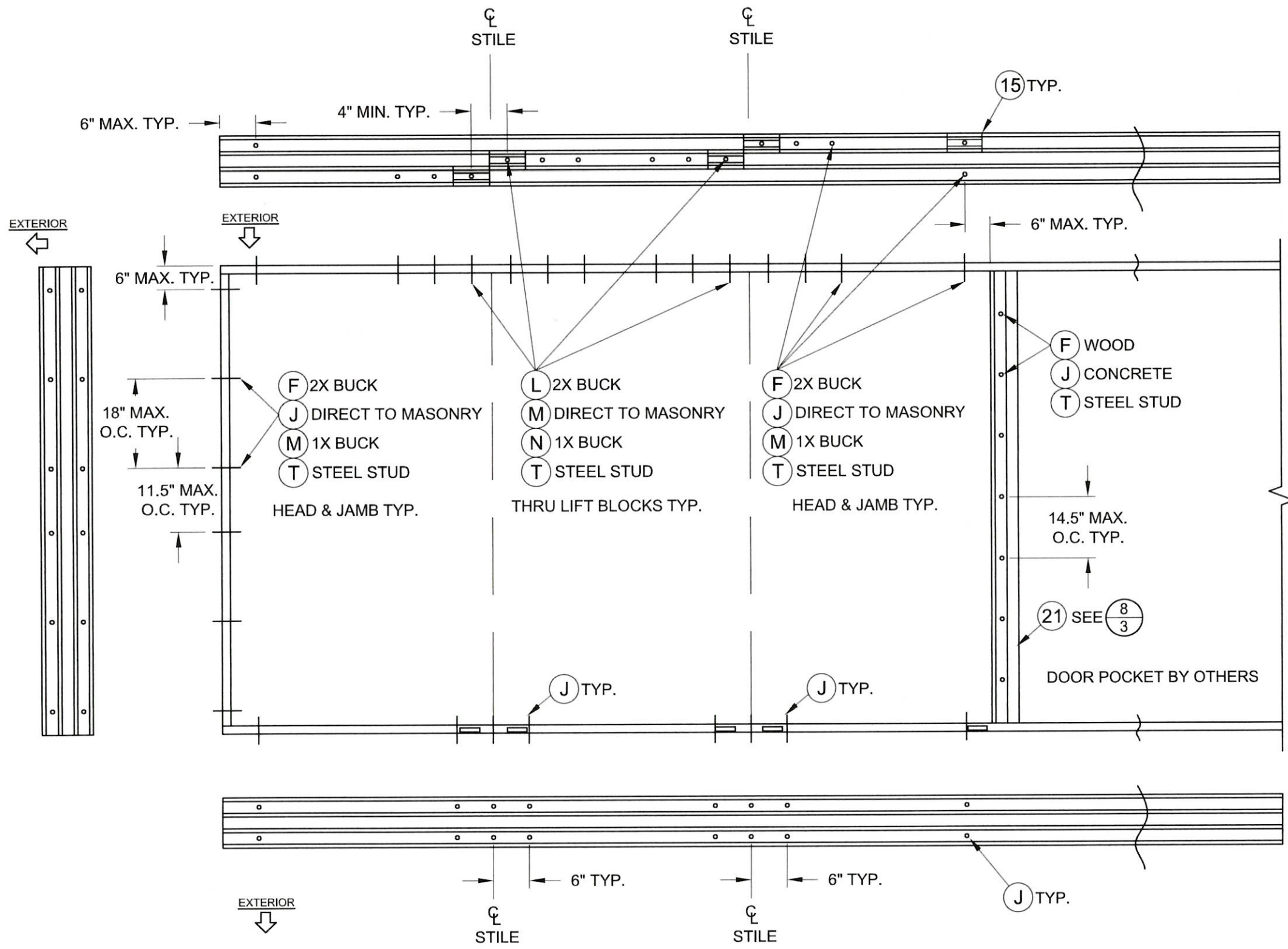
**FRAME ANCHORAGE DETAIL  
 4T SLIDING GLASS POCKET DOOR**

BY:	6000 SERIES SLIDING GLASS DOOR
REVISION:	4T FRAME ANCHORING NEWSOUTH WINDOW SOLUTIONS 10741 CROSSROADS COMMERCE BLVD. TAMPA, FL 33610
DATE:	
#:	
DATE:	06/04/2020
SCALE:	NTS
BY:	E KOSS
DRAWING #:	SGD6000LMI - TDI
SHEET:	6 OF 9





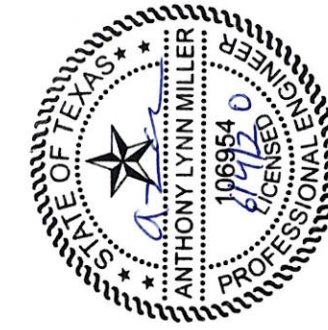
A. LYNN MILLER, P.E., P.E.# 106954  
 1070 TECHNOLOGY DR  
 N. VENICE, FL 34275  
 (941)-480-1600  
 COPYRIGHT © 2020  
 NEWSOUTH WINDOW SOLUTIONS  
 LIMITED LICENSE TO MAKE COPIES  
 FOR PERMITTING



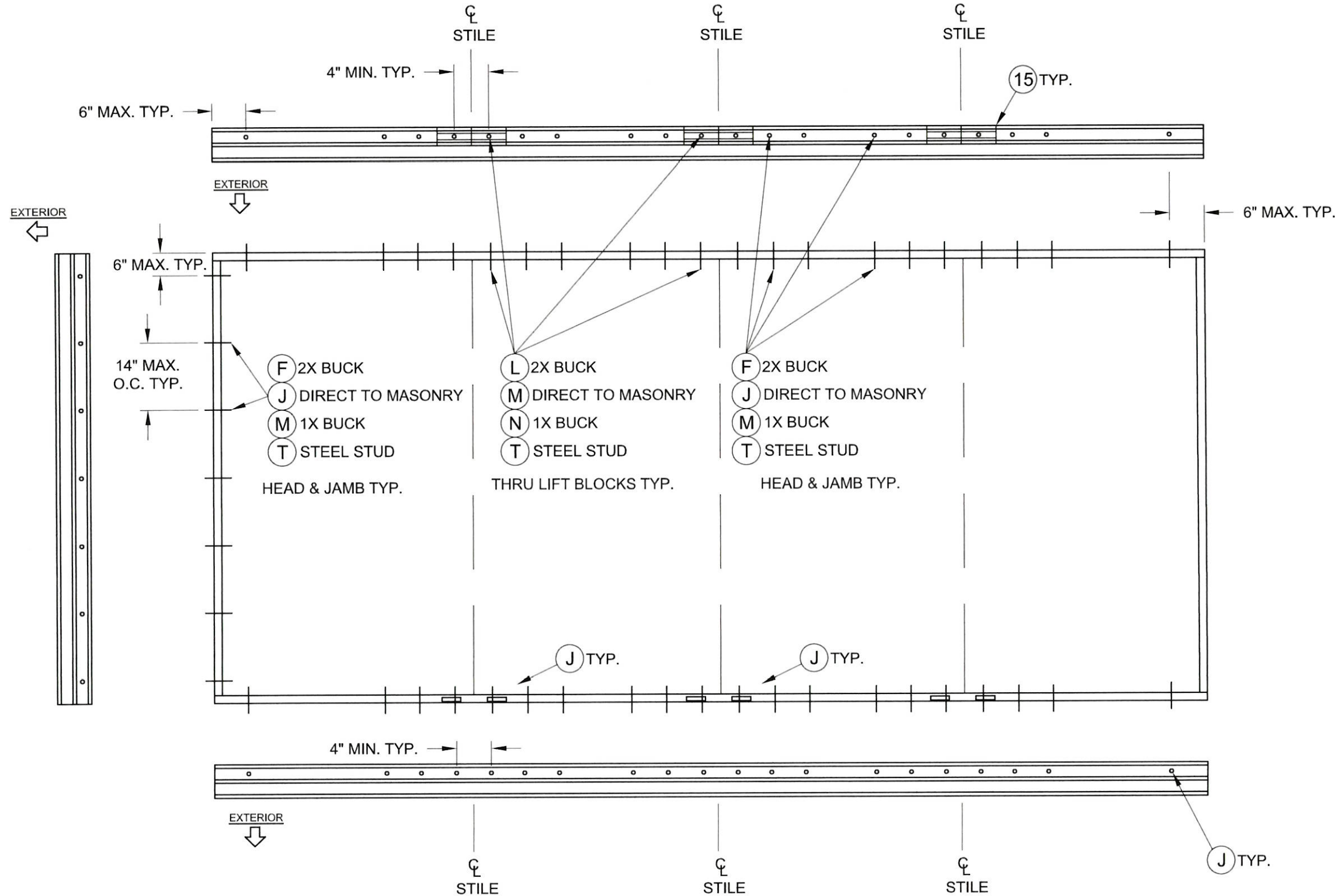
- NOTES:**
- 1) ANTI-LIFT BLOCKS (ITEM #15) REQ'D ABOVE ALL ACTIVE PANELS (X).
  - 2) STAGGER ANCHORS ABOUT INTERLOCK CENTERLINES - MIN. 4" O.C., ANCHOR THRU ANTI-LOCK BLOCKS AT HEAD.
  - 3) FOR BYPASS ANCHORAGE, DISMISS THE CLUSTERS NEAR THE POCKET (SHOWN ON RIGHT) AND REPLACE WITH END CLUSTERS (SHOWN ON LEFT)

**FRAME ANCHORAGE DETAIL  
 3T SLIDING GLASS POCKET DOOR**

BY:	6000 SERIES SLIDING GLASS DOOR
REVISION:	3T FRAME ANCHORING
DATE:	NEWSOUTH WINDOW SOLUTIONS 10741 CROSSROADS COMMERCE BLVD. TAMPA, FL 33610
#:	
DATE:	06/04/2020
SCALE:	NTS
BY:	E KOSS
DRAWING #:	SGD6000LMI - TDI
SHEET:	7 OF 9



A. LYNN MILLER, P.E., P.E.# 106954  
 1070 TECHNOLOGY DR  
 N. VENICE, FL 34275  
 (941)-480-1600  
 COPYRIGHT © 2020  
 NEWSOUTH WINDOW SOLUTIONS  
 LIMITED LICENSE TO MAKE COPIES  
 FOR PERMITTING



FRAME ANCHORAGE DETAIL  
 2T SLIDING GLASS POCKET DOOR

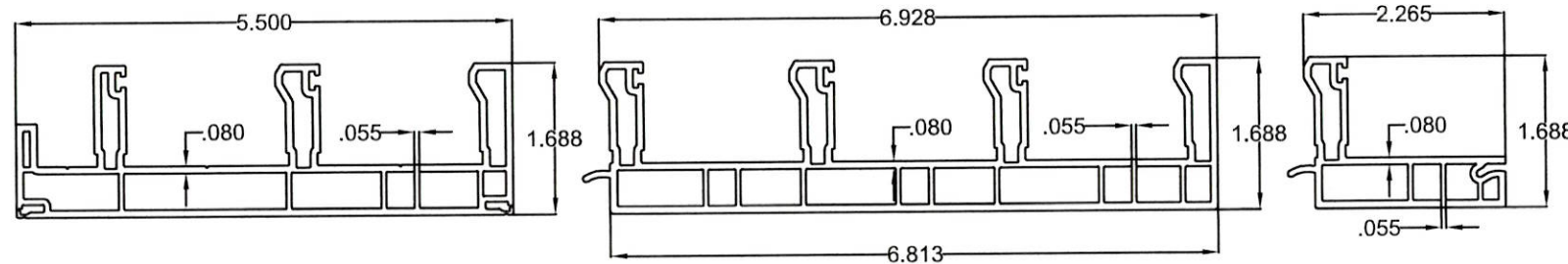
- NOTES:  
 1) ANTI-LIFT BLOCKS (ITEM #15) REQ'D ABOVE ALL ACTIVE PANELS (X).  
 2) OXXO SHOWN, ANCHORAGE SIMILAR FOR OXO, OX AND XO.

BY:	6000 SERIES SLIDING GLASS DOOR
REVISION:	2T FRAME ANCHORING
DATE:	NEWSOUTH WINDOW SOLUTIONS 10741 CROSSROADS COMMERCE BLVD. TAMPA, FL 33610
#:	
DATE:	06/04/2020
SCALE:	NTS
BY:	E KOSS
DRAWING #:	SGD6000LMI - TDI
SHEET:	8 OF 9

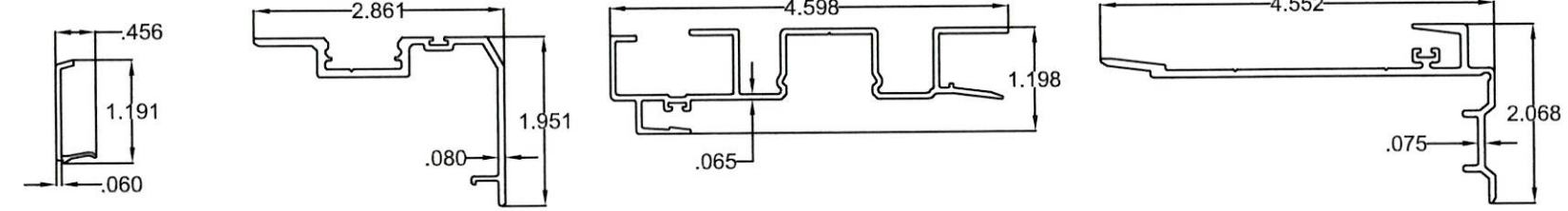


**BILL OF MATERIALS**

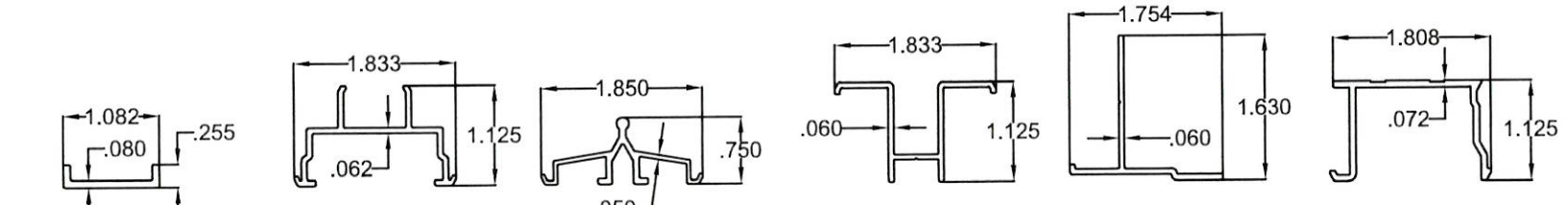
ITEM #	DESCRIPTION	MATERIAL
A	1X BUCK (SG>=0.42)	WOOD
B	2X BUCK (SG>=0.42)	WOOD
C	1/4" MAX SHIM SPACE	-
D	1/4" X 2-3/4" ELCO ULTRACON OR ULTRACON+ CONCRETE SCREW	STEEL
E	MASONRY - 3000 PSI MIN CONCRETE CONFORMING TO ACI 301 OR HOLLOW BLOCK CONFORMING TO ASTM C90	CONCRETE
F	#10 X 2" PPH SMS	STEEL
G	#8 X 1" PPH SMS	STEEL
H	#10 X 2-1/2" PPH SMS	STEEL
J	1/4" X 2-1/4" ELCO ULTRACON OR ULTRACON+ CONCRETE SCREW	STEEL
K	#8 X 1/2" PPH SMS	STEEL
L	#10 X 3" PPH SMS	STEEL
M	1/4" X 3-1/4" ELCO ULTRACON OR ULTRACON+ CONCRETE SCREW	STEEL
N	1/4" X 3-3/4" ELCO ULTRACON OR ULTRACON+ CONCRETE SCREW	STEEL
P	#8 X 1-1/2" PPH SMS	STEEL
T	#10-16 PH SELF-DRILLING SMS (3 THREADS MIN. THRU STUD)	STEEL
X	STEEL STUD MIN THICKNESS 0.056" (ASTM A653 GRADE 50, FY=50 KSI MIN., FU=65 KSI MIN.)	STEEL
1A	FRAME - 2T	PVC
1B	FRAME - 3T	PVC
2	ADD-A-TRACK	PVC
3	GLAZING BEAD	PVC
4	FRAME CAP (JAMB COVER)	PVC
5	INTERLOCK	6063-T5
6	SILL CAP (THRESHOLD)	6063-T5
7	PANEL STILE/RAIL	PVC
9	ROLLER SUPPORT	6063-T5
10	REINFORCEMENT (LOCK STILE, TOP/BTM RAIL)	6065-T5
11	FIXED PANEL SUPPORT	6065-T5
12	ROLLER TRACK	6063-T5
14	HD REINFORCEMENT (INTERLOCK)	ALUM
15	ANTI-LIFT	6063-T5
17	STANDARD SILL RISER	6063-T5
18	SILL RISER CAP	6063-T5
19	HIGH DAM SILL RISER	6063-T5
21	HOOKSTRIP	6063-T5
22	HOOKSTRIP FLANGE	6063-T5
23	MULLION (OFFSET BUTTSTILE)	PVC
24	REINFORCEMENT - MULLION (LARGE)	6063-T5
25	ROLLER ASSEMBLY	STEEL
26	REINFORCEMENT - MULLION (SMALL)	6063-T5
27	CORNER KEY	PVC
29	DOUBLE INTERLOCK (PANEL TO HOOKSTRIP)	6063-T5
30	LOCK AND HANDLE	-
31	STRIKE PLATE	-
39	SCREW COVER (HOOKSTRIP)	PVC
40	ASTRAGAL	6063-T5
41	WTSP, .187 x .290 Poly Fin	
42	WTSP, 0.8125" x 0.875" x 4" Fuzzy Pad (TOP/BTM RAIL)	



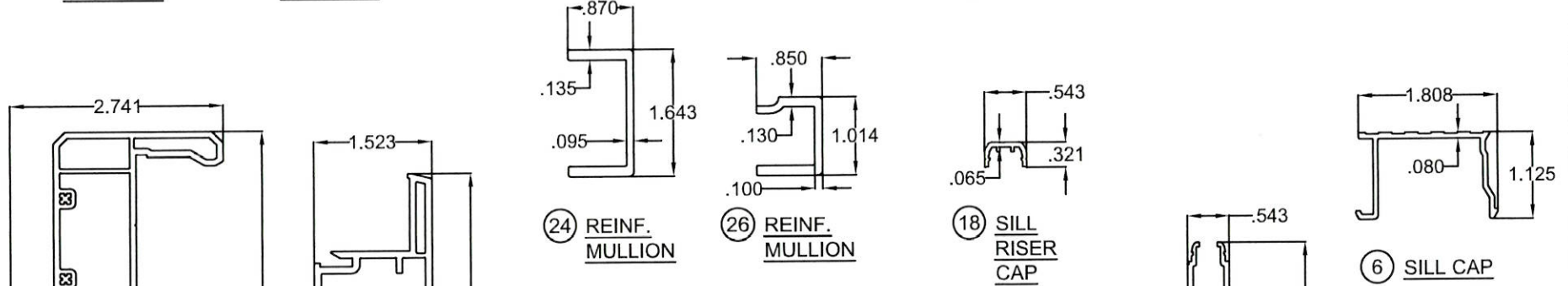
(1A) FRAME - 2T      (1B) FRAME - 3T      (2) ADD-A-TRACK



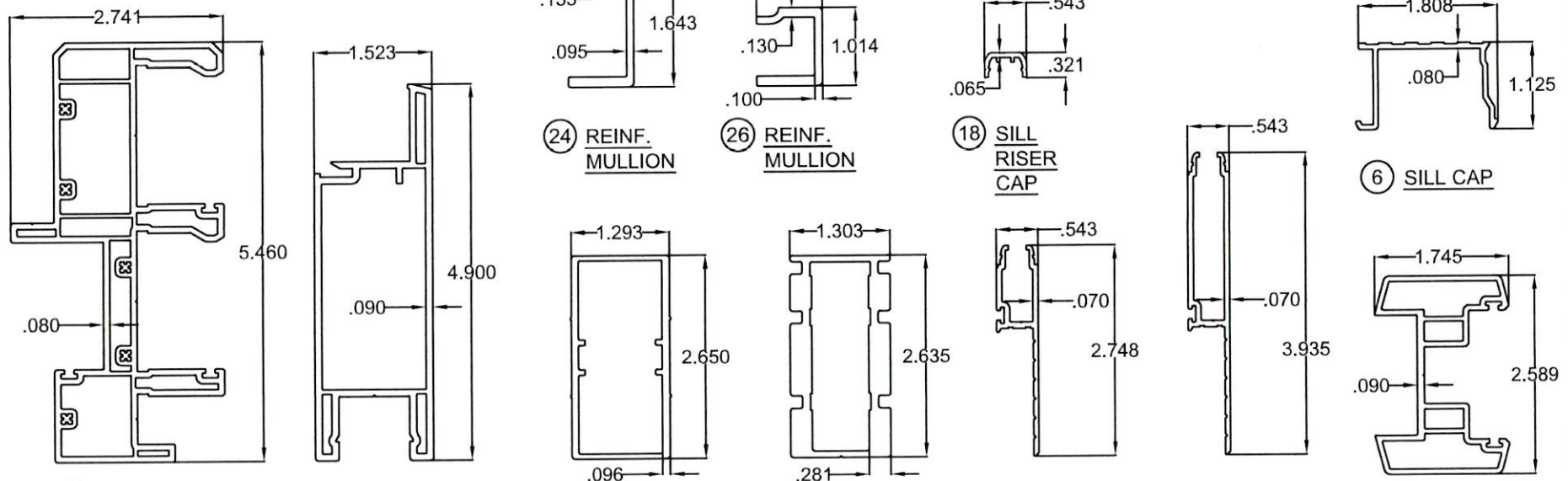
(3) GLAZING BEAD      (5) INTERLOCK      (21) HOOKSTRIP      (29) DOUBLE INTERLOCK (HOOKSTRIP)



(9) ROLLER SUPPORT      (11) FIXED PANEL SUPPORT      (12) ROLLER TRACK      (15) ANTI-LIFT      (22) HOOKSTRIP FLANGE      (4) FRAME CAP



(24) REINF. MULLION      (26) REINF. MULLION      (18) SILL RISER CAP      (6) SILL CAP



(23) MULLION      (7) PANEL STILE/RAIL      (10) REINF. LOCK STILE, TOP/BTM RAIL      (14) HD REINF. INTERLOCK      (17) SILL RISER 2.81" TALL w/CAP      (19) HIGH DAM SILL RISER 4" TALL w/CAP      (40) ASTRAGAL



A. LYNN MILLER, P.E., P.E.# 106954  
 1070 TECHNOLOGY DR  
 N. VENICE, FL 34275  
 (941)-480-1600  
 NEWSOUTH WINDOW SOLUTIONS  
 LIMITED LICENSE TO MAKE COPIES FOR PERMITTING

**6000 SERIES SLIDING GLASS DOOR**  
 EXTRUSIONS / BILL OF MATERIALS  
 NEWSOUTH WINDOW SOLUTIONS  
 10741 CROSSROADS COMMERCE BLVD.  
 TAMPA, FL 33610

BY:	
REVISION:	
DATE:	
#:	
DATE:	06/04/2020
SCALE:	10:1
BY:	E KOSS
DRAWING #:	SGD6000LMI - TDI
SHEET:	9 OF 9

THE APPROVED WHITE, RIGID PVC EXTERIOR EXTRUSIONS FOR DOORS ARE TO BE PRODUCED BY EXTRUDERS' LICENSEES UNDER "AAMA CERTIFICATION PROGRAMS FOR RIGID PVC EXTRUSIONS".