



R-650 SLIDING PATIO DOOR "NON-IMPACT"

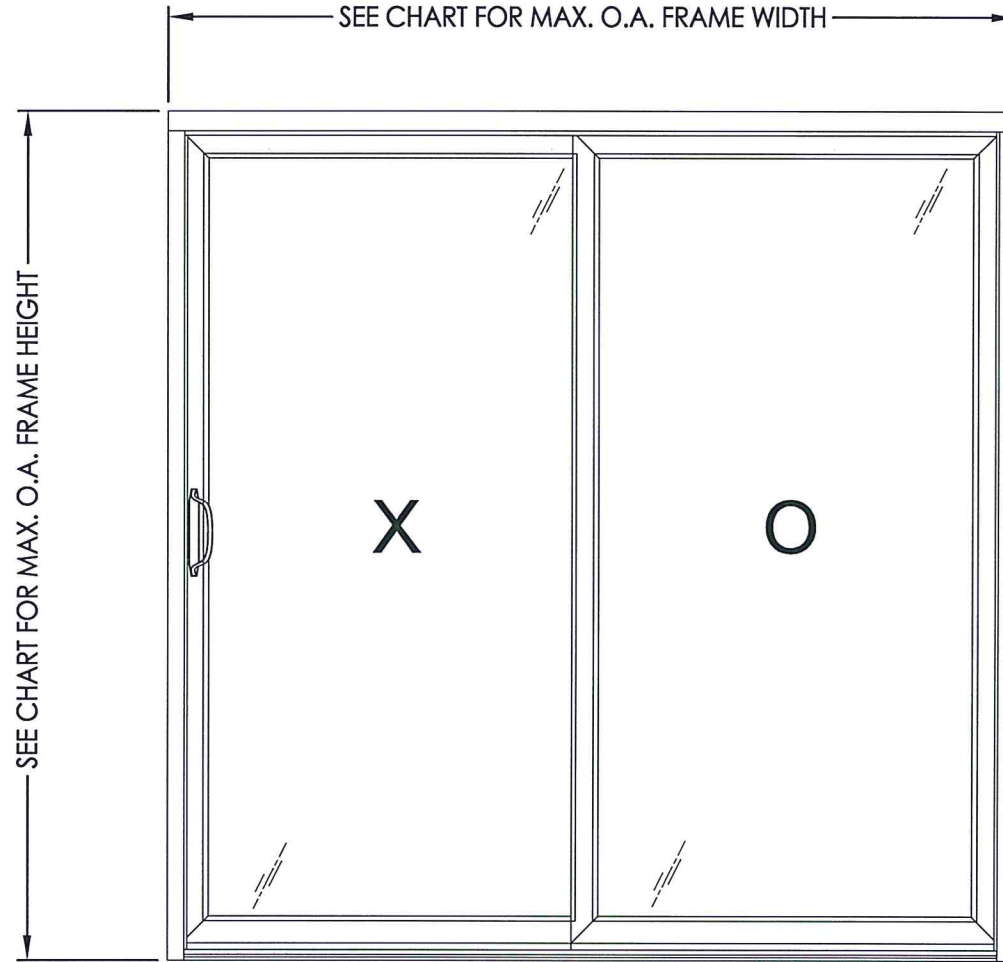
EVALUATED FOR USE IN THE STATE OF TEXAS

TDI DR-1108

The Novatech Sliding Patio Door described herein complies with the 2018 International Residential Code (IRC), Sections R301 & R609 and the 2018 International Building Code (IBC), Sections 1404.13, 1609, 1709.5, 2403 and 2404 subject to the following conditions:

1. Anchors shall be as listed and spaced as shown in the details. Anchor embedment to base material shall be beyond wall dressing or stucco.
2. When used in areas requiring wind-borne debris protection this product is required to be protected with an impact resistant covering that complies with Section R301.2.1.2 of the IRC and Section 1609.1.2 of the IBC.
3. Allowable design pressure requirements must be equal to or less than the design pressure rating shown in the design pressure chart, sheet 1 of this drawing.
4. Conditions not covered by this drawing are subject to further engineering analysis.

| TABLE OF CONTENTS | |
|-------------------|--|
| SHEET# | DESCRIPTION |
| 1 | Typical elevations, design pressures and general notes |
| 2 | Horizontal cross sections |
| 3 | Vertical cross sections |
| 4 | Frame anchoring |
| 5 | Bill of materials, glazing details & components |



| MAX. FRAME DIMENSION | MAX. D.L.O. DIMENSION | GLASS TYPE | DESIGN PRESSURE (PSF) | |
|----------------------|-----------------------|------------|-----------------------|----------|
| | | | POSITIVE | NEGATIVE |
| 70.5" X 81.0" | 30.0" x 72.2" | G1 | +60.0 | -60.0 |



Documents Prepared By: Lyndon F. Schmidt, P.E.
TEXAS P.E. #104123

RW BUILDING CONSULTANTS, INC.
P.O. Box 230 Valrico FL, 33595
Phone No.: 813.659.9197

TEXAS BOARD OF PROFESSIONAL ENGINEERS
CERTIFICATE OF REGISTRATION # F-11852

PRODUCT: NOVATECH PATIO DOOR

PART OR ASSEMBLY: TYPICAL ELEVATION, DESIGN PRESSURES & GENERAL NOTES

| NO. | DATE | UPDATE | CONCRETE ANCHOR TYPE | LFS BY |
|-----|---------|--------|----------------------|--------|
| 1 | 5/25/21 | | | |

REVISIONS

DATE: 3/05/20

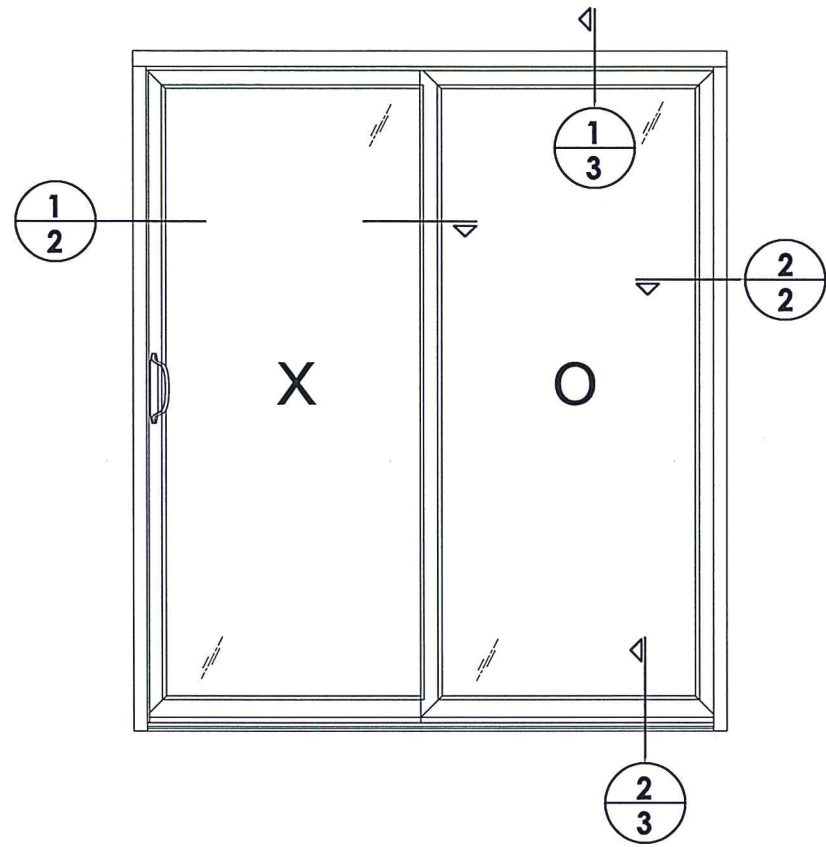
SCALE: N.T.S.

DWG. BY: LFS

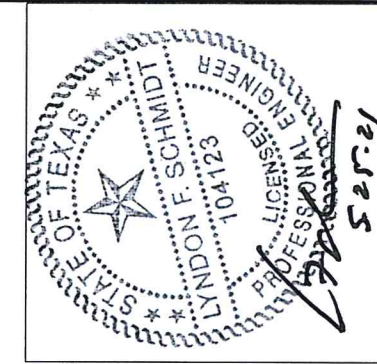
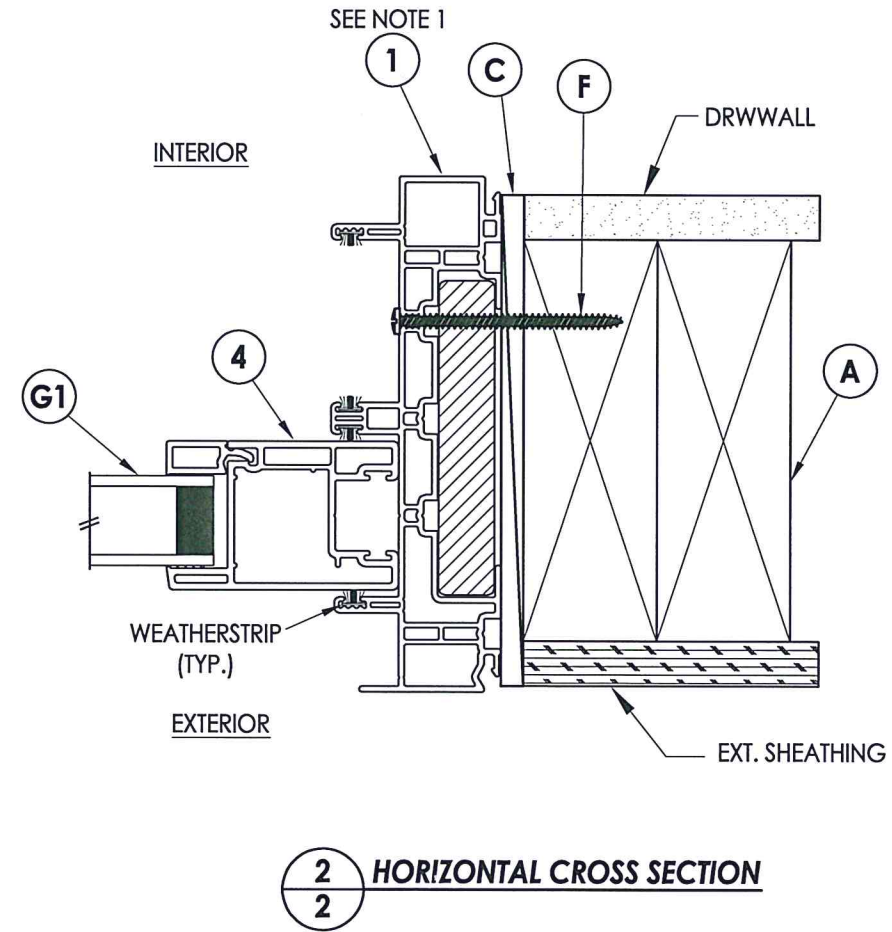
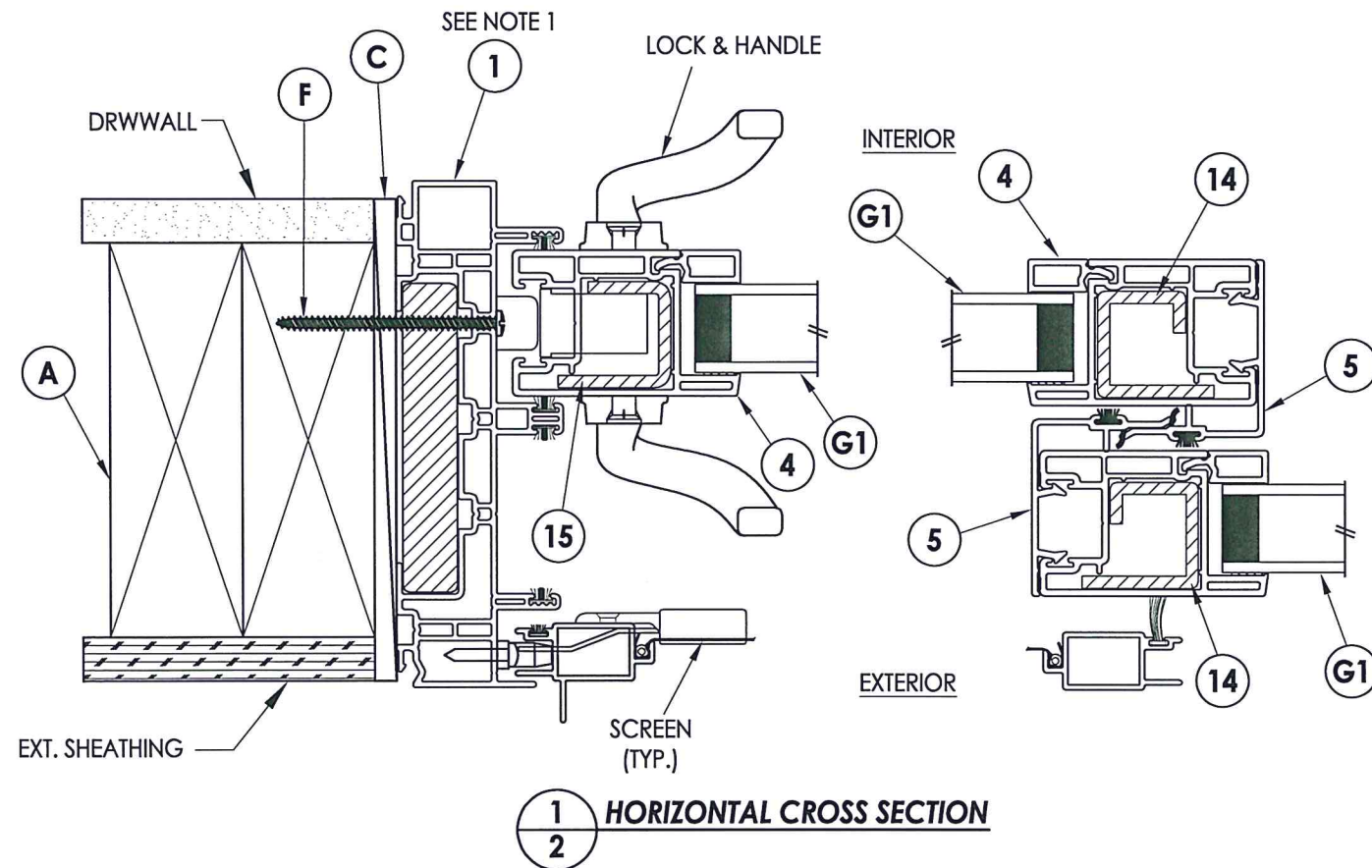
CHK. BY: RW

DRAWING NO.: TX-4989

SHEET 1 OF 5



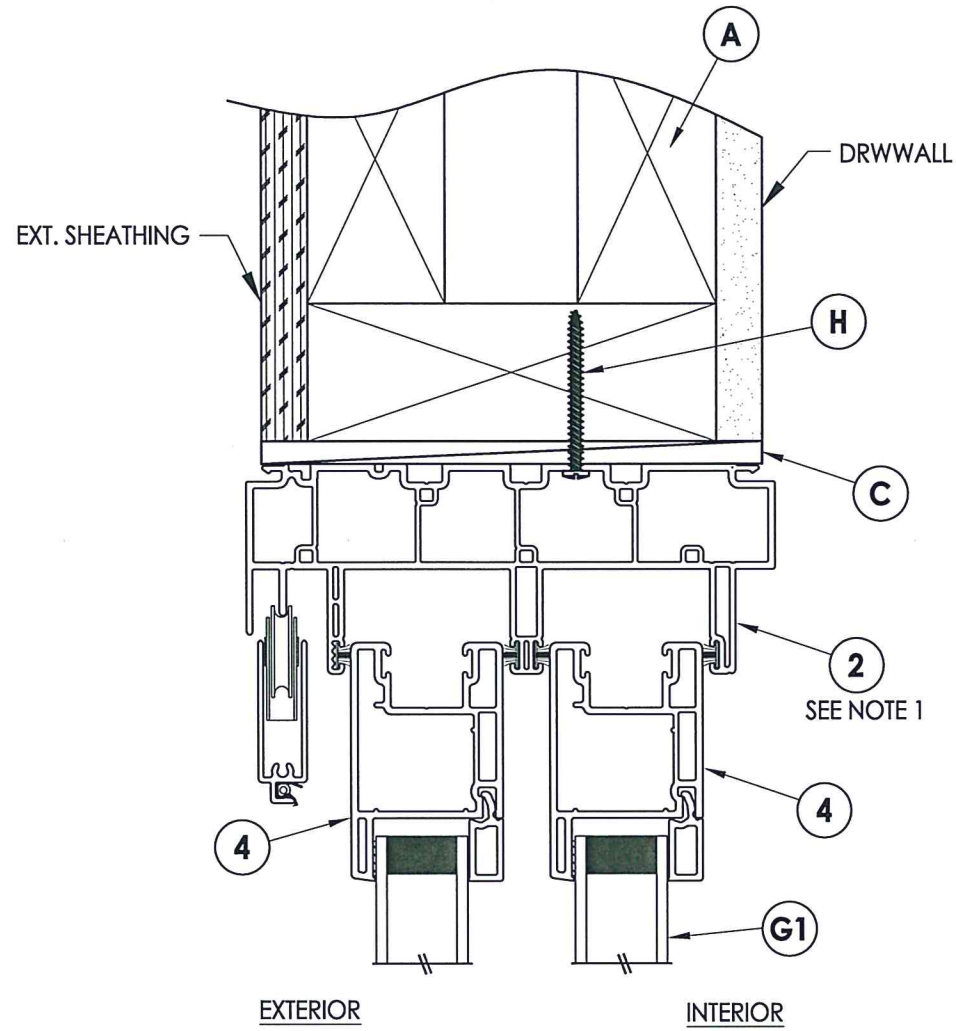
NOTE:
1. 5.75" HEAD, JAMB & SILL ARE SHOWN IN CROSS SECTIONS
(FULLY SUPPORTED 7.25" HEAD, JAMB & SILL ARE ALSO ALLOWED).



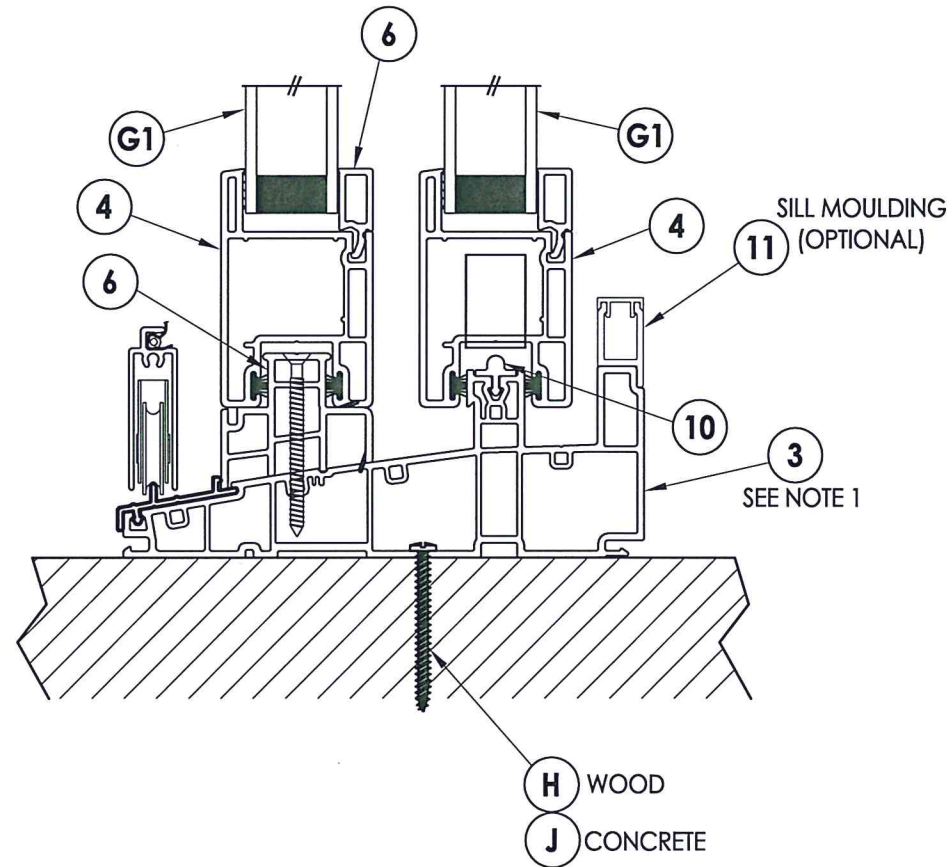
Documents Prepared By: Lyndon F. Schmidt, P.E.
TEXAS P.E. #104123

RW BUILDING CONSULTANTS, INC.
P.O. Box 230 Valrico FL, 33595
Phone No.: 813-659-9197
TEXAS BOARD OF PROFESSIONAL ENGINEERS
CERTIFICATE OF REGISTRATION # F-11852

| | |
|---|---------|
| PRODUCT: NOVATECH PATIO DOOR | |
| PART OR ASSEMBLY: HORIZONTAL CROSS SECTIONS | |
| NO. | DATE |
| 1 | 5/25/21 |
| DATE | 3/05/20 |
| SCALE | N.T.S. |
| DWG. BY | LFS |
| CHK. BY | RW |
| DRAWING NO. | TX-4989 |
| SHEET | 2 OF 5 |



1
3 VERTICAL CROSS SECTION



2
3 VERTICAL CROSS SECTION

NOTE:
1. 5.75" HEAD, JAMB & SILL ARE SHOWN IN CROSS SECTIONS (FULLY SUPPORTED 7.25" HEAD, JAMB & SILL ARE ALSO ALLOWED).



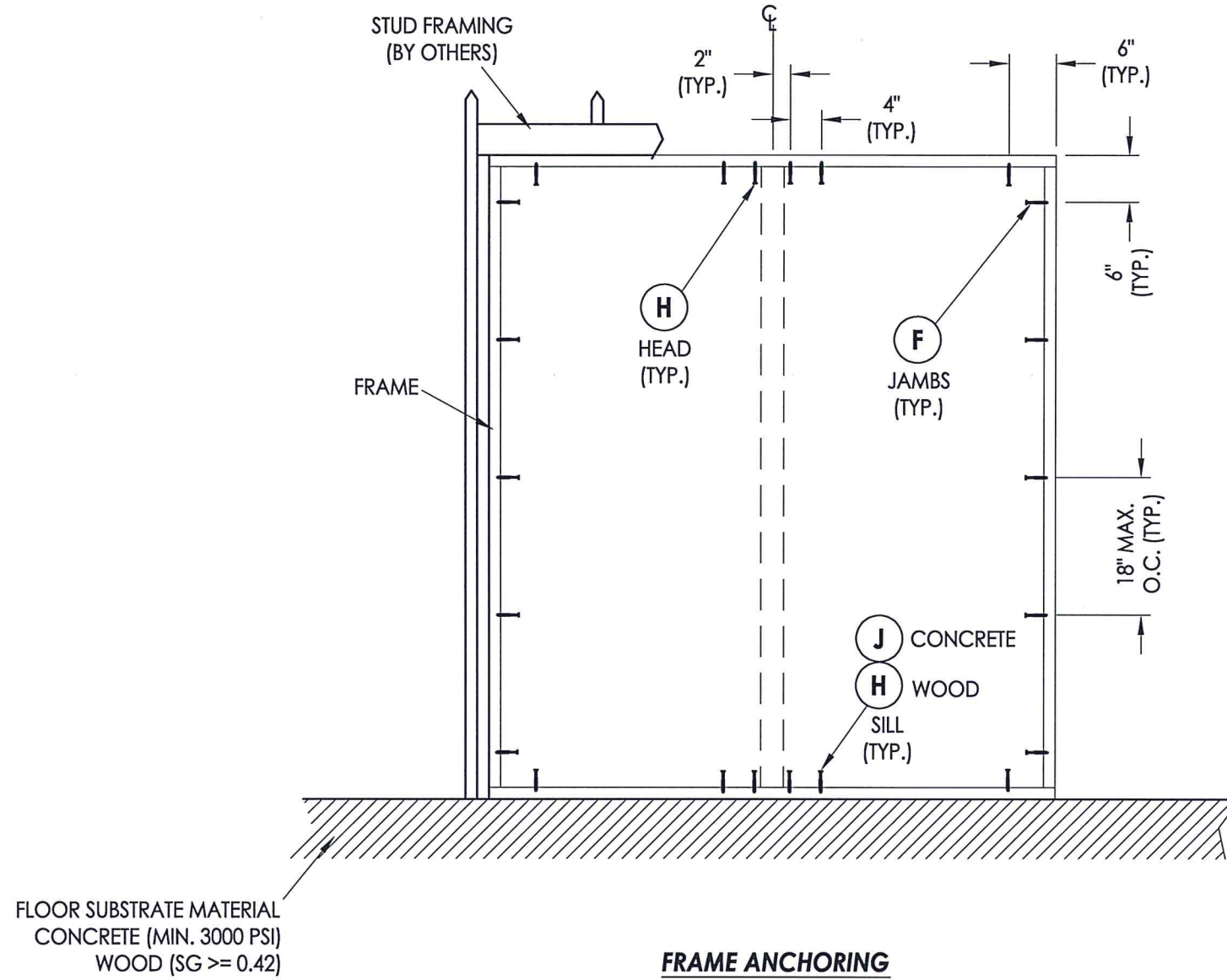
Documents Prepared By: Lyndon F. Schmidt, P.E.
TEXAS P.E. #104123

RW BUILDING CONSULTANTS, INC.
P.O. Box 230 Valrico FL, 33595
Phone No.: 813.659.9197
TEXAS BOARD OF PROFESSIONAL ENGINEERS
CERTIFICATE OF REGISTRATION # F-11852

| | |
|-------------------|-------------------------|
| PRODUCT: | NOVATECH PATIO DOOR |
| PART OR ASSEMBLY: | VERTICAL CROSS SECTIONS |

| NO. | DATE | UPDATE | CONCRETE ANCHOR TYPE | LFS | BY |
|-----|---------|--------|----------------------|-----|----|
| 1 | 5/25/21 | UPDATE | CONCRETE ANCHOR | LFS | BY |

| | |
|--------------|---------|
| DATE: | 3/05/20 |
| SCALE: | N.T.S. |
| DWG. BY: | LFS |
| CHK. BY: | RW |
| DRAWING NO.: | TX-4989 |
| SHEET | 3 OF 5 |



FRAME ANCHORING

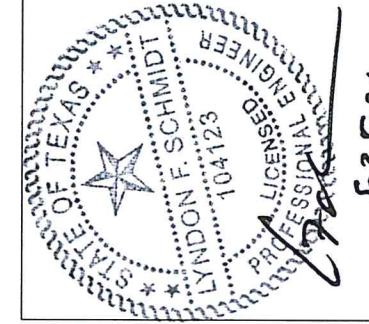
CONCRETE ANCHOR NOTES:

1. Concrete anchor locations at the corners may be adjusted to maintain the min. edge distance to mortar joints.
2. Concrete anchor locations noted as "MAX. ON CENTER" must be adjusted to maintain the min. edge distance to mortar joints, additional concrete anchors may be required to ensure the "MAX. ON CENTER" dimension are not exceeded.
3. Concrete anchor table:

| ANCHOR TYPE | ANCHOR SIZE | MIN. EMBEDMENT | MIN. CLEARANCE TO MASONRY EDGE | MIN. CLEARANCE TO ADJACENT ANCHOR |
|-------------------|-------------|----------------|--------------------------------|-----------------------------------|
| ITW TAPCON® | 1/4" | 1-3/4" | 1-1/2" | 4" |
| DeWALT ULTRACON®+ | 1/4" | 1-3/4" | 1" | 4" |

WOOD SCREW INSTALLATION NOTES:

1. Maintain a minimum 5/8" edge distance, 1" end distance, & 1" o.c. spacing of wood screws to prevent the splitting of wood.



5-25-21

Documents Prepared By: Lyndon F. Schmidt, P.E.
TEXAS P.E. #104123

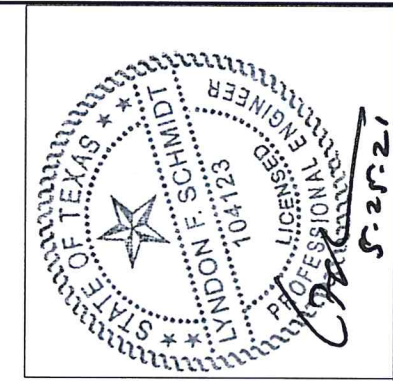
RW BUILDING CONSULTANTS, INC.
P.O. Box 230 Valrico FL 33595
Phone No.: 813.659.9197
TEXAS BOARD OF PROFESSIONAL ENGINEERS
CERTIFICATE OF REGISTRATION # F-11852

| | | | |
|----------------------|---------|---------------------|----------------------|
| PRODUCT: | | NOVATECH PATIO DOOR | |
| PART OR ASSEMBLY: | | FRAME ANCHORING | |
| NO. | DATE | UPDATE | CONCRETE ANCHOR TYPE |
| 1 | 5/25/21 | | LFS |
| BY | | LFS | |
| REVISIONS | | | |
| DATE: 3/05/20 | | | |
| SCALE: N.T.S. | | | |
| DWG. BY: LFS | | | |
| CHK. BY: RW | | | |
| DRAWING NO.: TX-4989 | | | |
| SHEET 4 OF 5 | | | |

BILL OF MATERIALS

| ITEM # | DESCRIPTION | MATERIAL |
|--------|---|----------|
| A | 2X FRAMING (SG >= 0.42) | WOOD |
| C | 1/4" MAX. SHIM SPACE | - |
| F | #8 X 2-1/2" PPH SMS (1-1/8" MIN. EMBEDMENT) | STEEL |
| H | #8 X 1-3/4" PPH SMS (1-3/8" MIN. EMBEDMENT) | STEEL |
| J | 1/4" PFH DeWALT OR ITW CONCRETE SCREW (1-3/4" MIN. EMBEDMENT) | STEEL |
| 1 | FRAME (5.75" OR 7.75")* | PVC |
| 2 | HEAD (5.75" OR 7.75")* | PVC |
| 3 | SILL (5.69" OR 7.59")* | PVC |
| 4 | SASH* | PVC |
| 5 | MEETING STILE INTERLOCK* | PVC |
| 6 | FIXED SASH SUPPORT* | PVC |
| 9 | GLAZING BEAD* | PVC |
| 10 | ALUMINUM RAIL | ALUM |
| 11 | SILL MOULDING* | PVC |
| 14 | REINFORCEMENT (MEETING STILE) | STEEL |
| 15 | REINFORCEMENT (HANDLE) | STEEL |

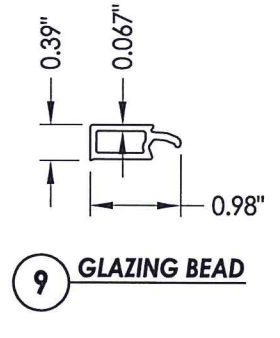
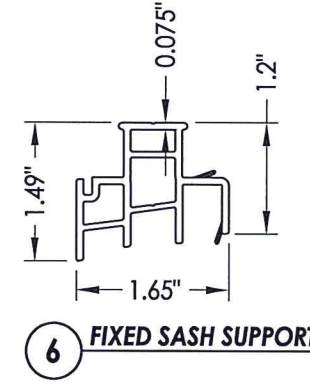
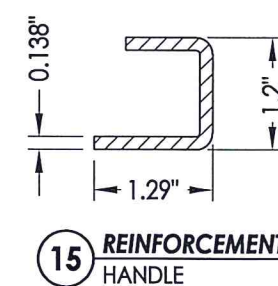
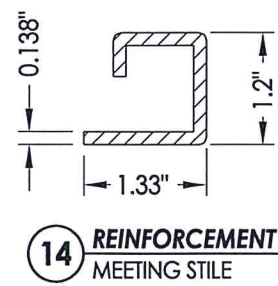
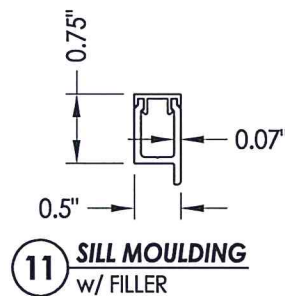
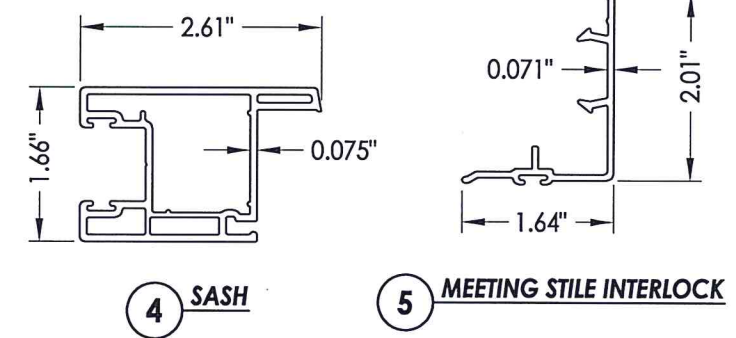
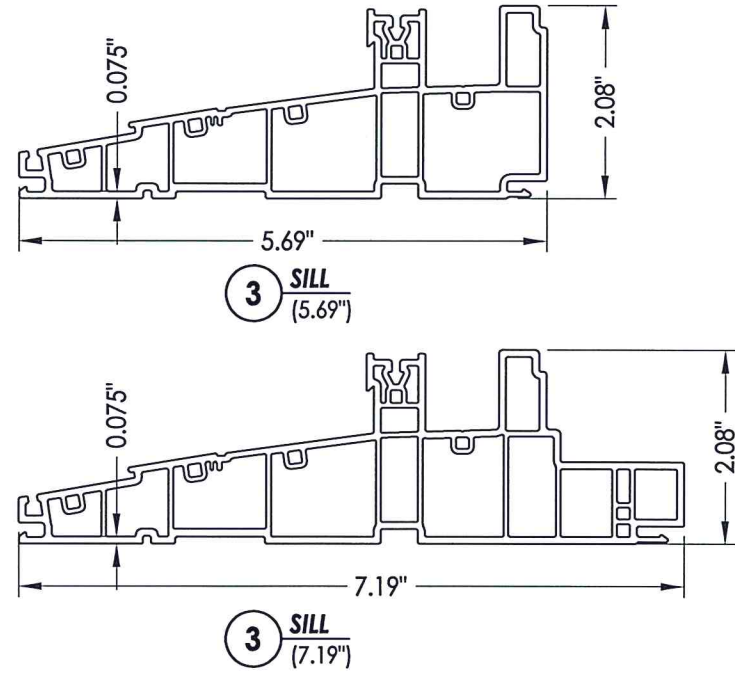
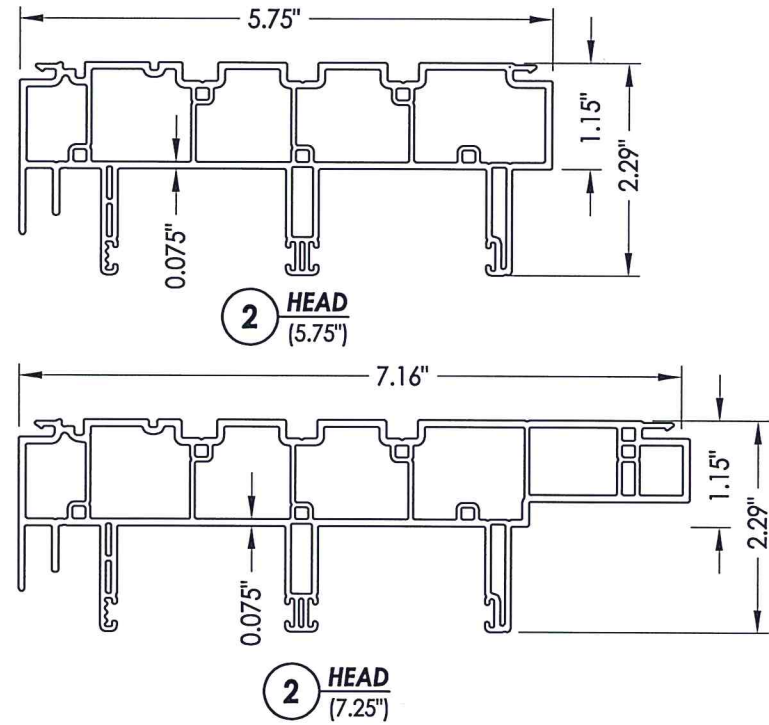
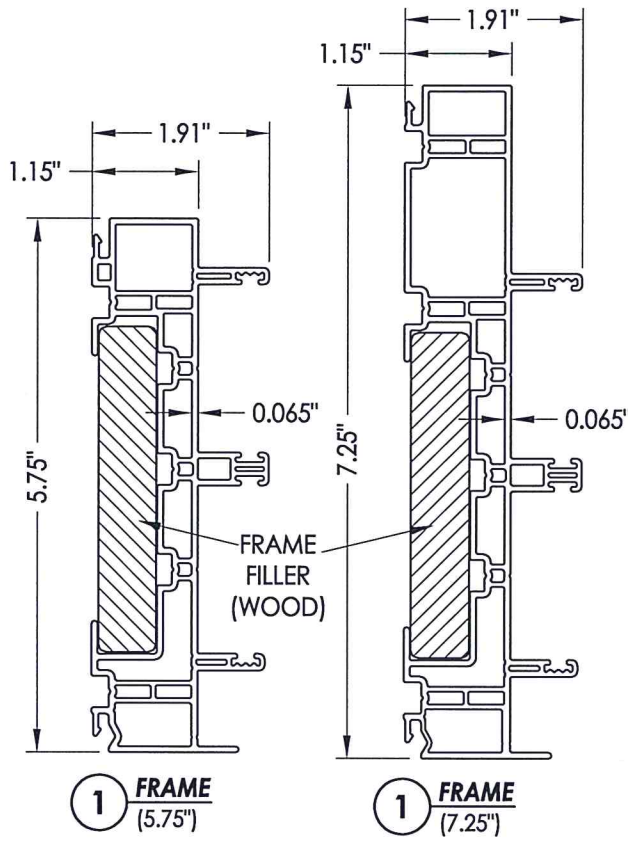
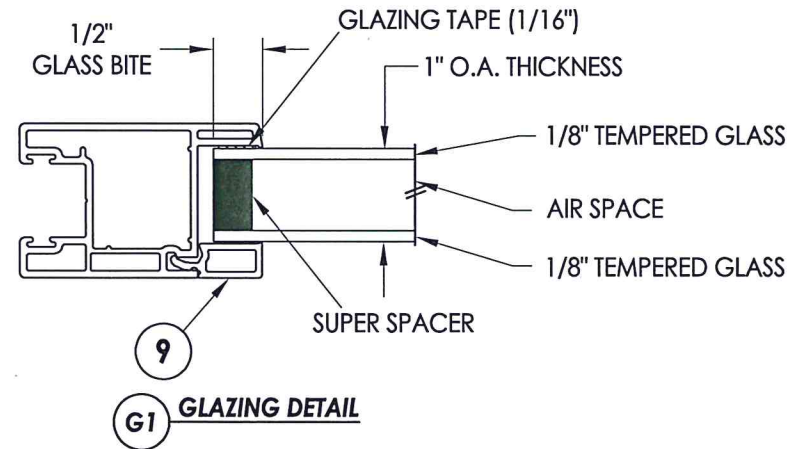
* THE APPROVED WHITE RIGID PVC EXTERIOR EXTRUSIONS FOR WINDOWS ARE TO BE PRODUCED BY EXTRUDERS LICENSEES IN "CERTIFICATIONS PROGRAMS FOR RIGID PVC EXTRUSIONS".



Documents Prepared By: Lyndon F. Schmidt, P.E.
TEXAS P.E. #104123

RW BUILDING CONSULTANTS, INC.
P.O. Box 230 Veroico FL, 33595
Phone No.: 813.659.9197

TEXAS BOARD OF PROFESSIONAL ENGINEERS
CERTIFICATE OF REGISTRATION # F-11852



PRODUCT: NOVATECH PATIO DOOR

PART OR ASSEMBLY: BILL OF MATERIALS, GLAZING DETAILS & COMPONENTS

| NO. | DATE | UPDATE | CONCRETE ANCHOR TYPE | LFS | BY |
|-----|---------|--------|----------------------|-----|----|
| 1 | 5/25/21 | UPDATE | CONCRETE ANCHOR TYPE | LFS | BY |

DATE: 3/05/20
SCALE: N.T.S.
DWG. BY: LFS
CHK. BY: RW
DRAWING NO.: TX-4989
SHEET 5 OF 5