

# MODEL 8700, 8710, & 8750 SYSTEM 1 SWING DOOR & SIDELITE - NON-IMPACT

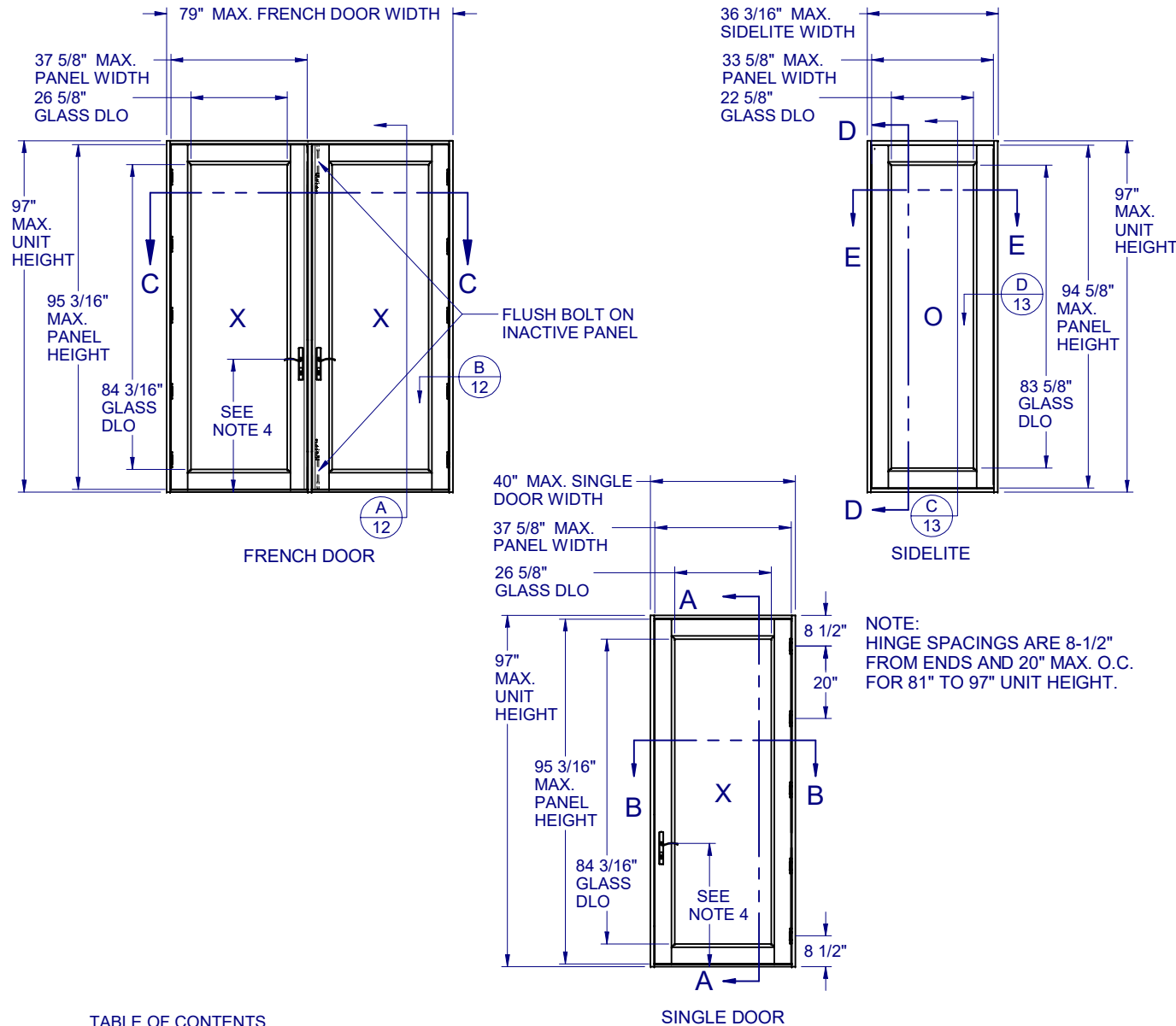
## GENERAL NOTES:

1. THE PRODUCT SHOWN HEREIN IS DESIGNED AND MANUFACTURED TO COMPLY WITH THE REQUIREMENTS OF THE 2018 INTERNATIONAL BUILDING CODE (IBC) AND 2018 INTERNATIONAL RESIDENTIAL CODE (IRC).
2. GLAZING OPTIONS: (SEE SHEET 4)
3. CONFIGURATIONS: SINGLE OUTSWING, SINGLE OUTSWING w/SIDELITE(S), FRENCH DOOR(S), FRENCH DOOR(S) w/SIDELITE(S), SIDELITE NOT ATTACHED.
4. LOCK OPTIONS:  
UP TO 6'8":  
A. DOUBLE BORE w/TWO (2) INTERIOR FLUSH BOLTS. HANDLE SET @ 36"  
B. MORTISE LOCK w/ TWO (2) INTERIOR FLUSH BOLTS. HANDLE SET @ 34"  
C. MULTIPOINT (4 PT.) HANDLE SET @ 34"  
ABOVE 6'8":  
A. MULTIPOINT (5 PT.) HANDLE SET @ 34"
5. ANCHORAGE: THE 33 1/3% STRESS INCREASE HAS NOT BEEN USED IN THE DESIGN OF THIS PRODUCT. SEE SHEETS 12-13 FOR ANCHOR DETAILS. WINDLOAD DURATION FACTOR Cd=1.6 WAS USED FOR WOOD ANCHOR CALCULATIONS.
6. NOT APPROVED FOR IMPACT RESISTANCE. IMPACT PROTECTIVE SYSTEM IS REQUIRED IN WIND BORNE DEBRIS REGION.
7. ALL FRAMES ARE PROCESSED AND SCREWED TOGETHER. PANELS ARE PROCESSED AND ASSEMBLED VIA TIE ROD.
8. SERIES / MODEL DESIGNATION SD-8700, FD-8750, SLT-8710.
9. THE DESIGNATION X AND O STAND FOR THE FOLLOWING:  
X = OPERABLE SASH, O = FIXED SASH
10. SECTION CALLOUTS APPLY TO ALL CONFIGURATIONS IN A SIMILAR LOCATION.
11. INTERIOR FLUSH BOLTS ON ACTIVE PANEL TO BE ENGAGED PRIOR TO SEVERE WEATHER.
12. QUALIFIED ALTERNATIVE LOCKSET/DEADBOLT HARDWARE IS GRADE 2 BY PAMEX AND DELANY.
13. MAX. PANEL WIDTHS APPLY TO ALL CONFIGURATIONS, MULLED OR NON-MULLED UNITS.



1900 SW 44TH AVE.  
OCALA, FLORIDA 34474  
WWW.CWS.CC

## 8700/10/50 PVC SWING DOOR NON-IMPACT



### TABLE OF CONTENTS

GENERAL NOTES & ELEVATIONS.....	1-3
DP CHART & GLAZING DETAIL.....	4
SECTION VIEWS.....	5-7
BOM.....	8
EXTRUSIONS.....	9
ANCHOR SCHEDULE & NOTES.....	10-11
INSTALLATION DETAILS.....	12-13

SYSTEM 1 (CAR 138-787)  
MAXIMUM ALLOWABLE DESIGN PRESSURE: +80/-80 PSF

NO.:	DESCRIPTION:	BY:	DATE:
		JLD	4/21/20
		JML	3/21/17
		JML	8/21/16
REVISIONS			



5/15/2020

LUCAS A. TURNER, P.E.  
TX PE # 115094  
TBPE REG. #F-18075  
2428 OLD NATCHEZ TRC TRL  
CAMDEN, TN 38320  
PH. 941-380-1574

SHEET DESCRIPTION:

### GENERAL NOTES AND ELEVATIONS

DRAWN BY:	DATE:
EMK	11/11/15
DWG #:	REV.:
TDI-640	C
SCALE:	SHEET
1:35	1 OF 13

**8700/10/50 PVC  
SWING DOOR  
NON-IMPACT**

					4/27/20	DATE:
				JLD	3/21/17	BY:
			IBC/IRC REF. 2018 UPDATE	JML	8/2/16	NO.:
			REVIS TO TDI REQUEST	JML		DESCRIPTION:
			REVIS TO TDI REQUEST			REVISIONS



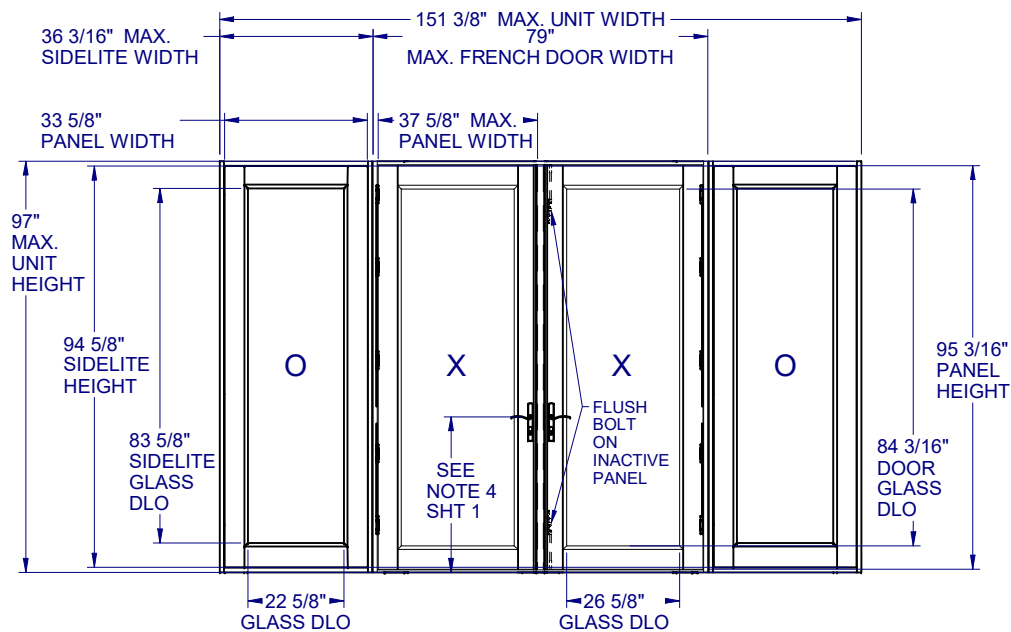
5/15/2020

LUCAS A. TURNER, P.E.  
TX PE # 115094  
TBPE REG. #F-18075  
2428 OLD NATCHEZ TRC TRL  
CAMDEN, TN 38320  
PH. 941-380-1574

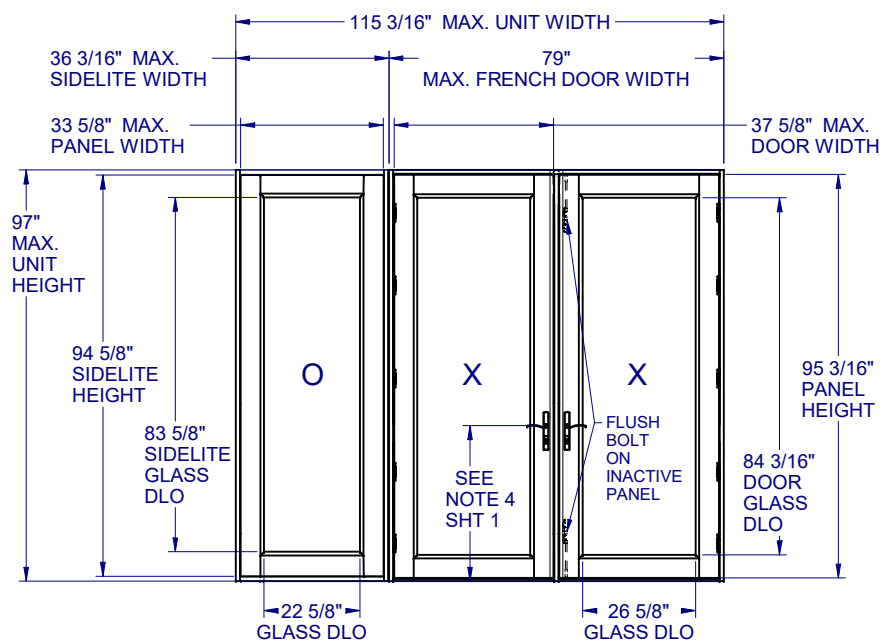
SHEET DESCRIPTION:

**GENERAL NOTES AND  
ELEVATIONS**

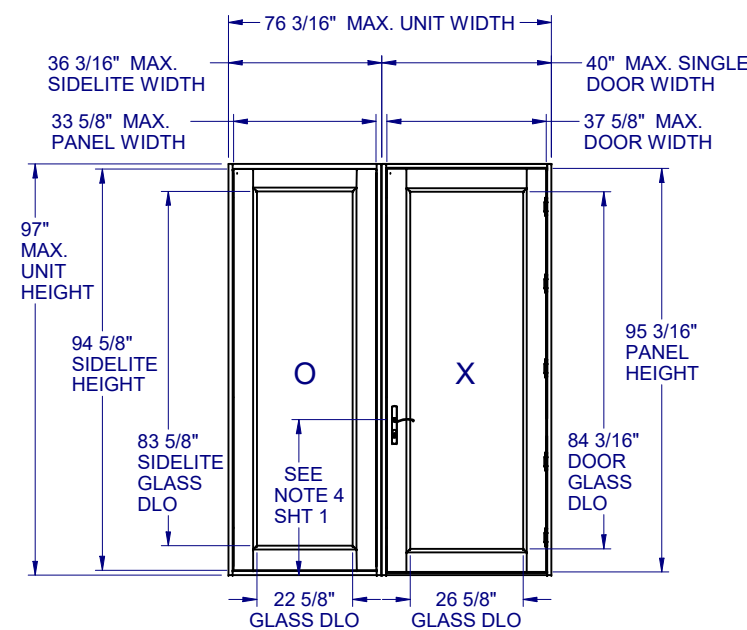
DRAWN BY:	DATE:
EMK	11/11/15
DWG #:	REV.:
TDI-640	C
SCALE:	SHEET
1:35	2 OF 13



FRENCH DOOR w/SIDELITES

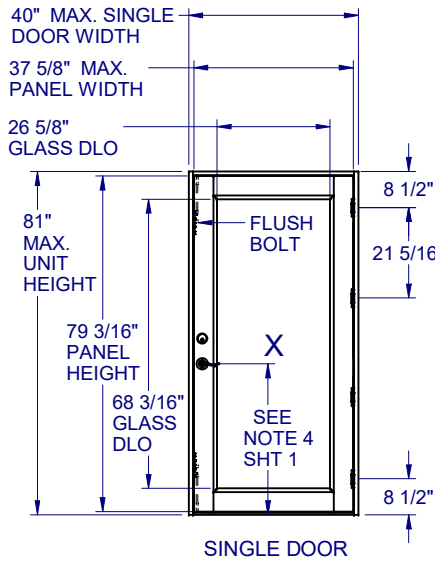


FRENCH DOOR w/SIDLITE



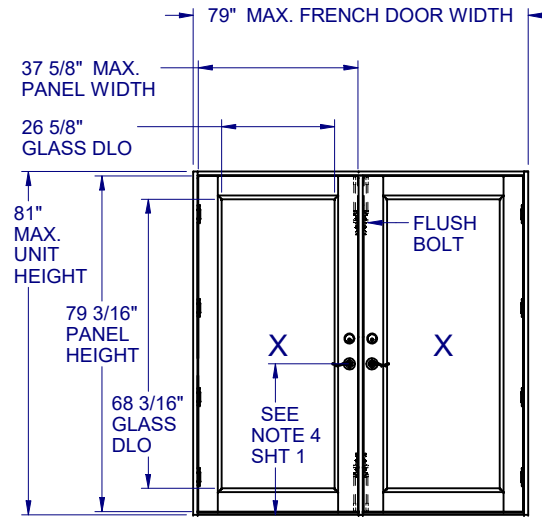
SINGLE DOOR w/SIDELITE

### 8700/10/50 PVC SWING DOOR NON-IMPACT

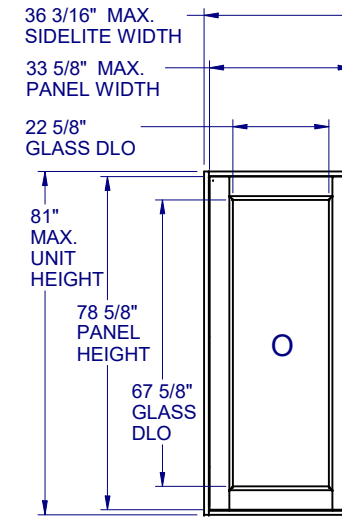


SINGLE DOOR

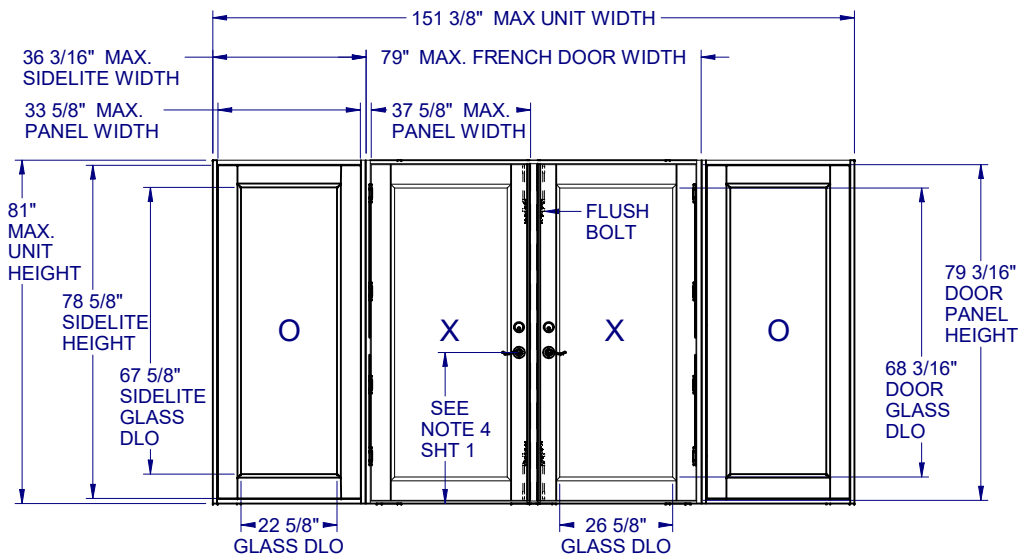
NOTE: HINGE SPACINGS ARE 8-1/2" FROM ENDS AND 21-5/16" MAX. O.C. UP TO 81" UNIT HEIGHT.



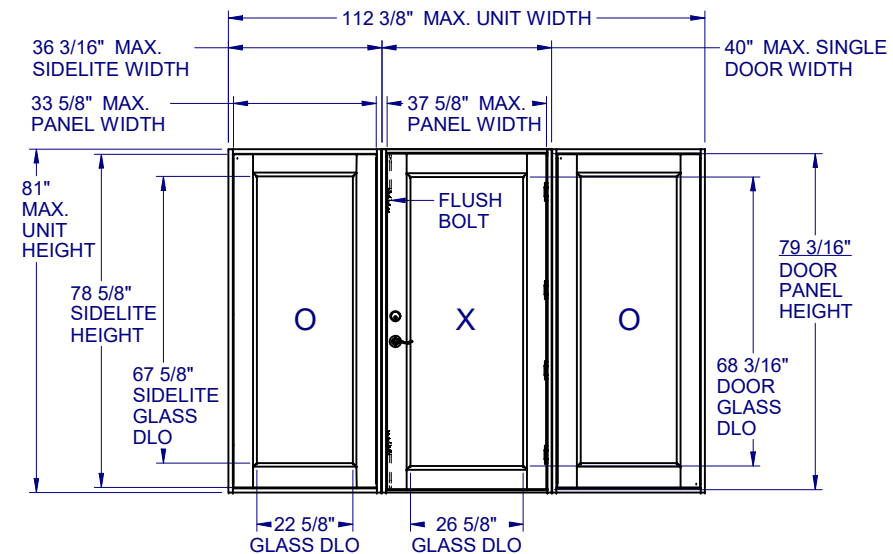
FRENCH DOOR



SIDELITE



FRENCH DOOR w/SIDELITES



SINGLE DOOR w/SIDELITES

NO.:	DESCRIPTION:	BY:	DATE:
C	IBC/IRC REF. 2018 UPDATE	JLD	4/27/20
B	REVISED TO TDI REQUEST	JML	3/21/17
A	REVISED TO TDI REQUEST	JML	8/2/16

REVISIONS



5/15/2020

LUCAS A. TURNER, P.E.  
TX PE # 115094  
TBPE REG. #F-18075  
2428 OLD NATCHEZ TRC TRL  
CAMDEN, TN 38320  
PH. 941-380-1574

SHEET DESCRIPTION:

#### GENERAL NOTES AND ELEVATIONS

DRAWN BY:	DATE:
EMK	11/11/15
DWG #:	REV.:
TDI-640	C
SCALE:	SHEET
1:35	3 OF 13

**8700/10/50 PVC  
SWING DOOR  
NON-IMPACT**

NO.:	DESCRIPTION:	BY:	DATE:
C	IBC/IRC REF. 2018 UPDATE	JLD	4/27/20
B	REVISED TO TDI REQUEST	JML	3/21/17
A	REVISED TO TDI REQUEST	JML	8/2/16

REVISIONS



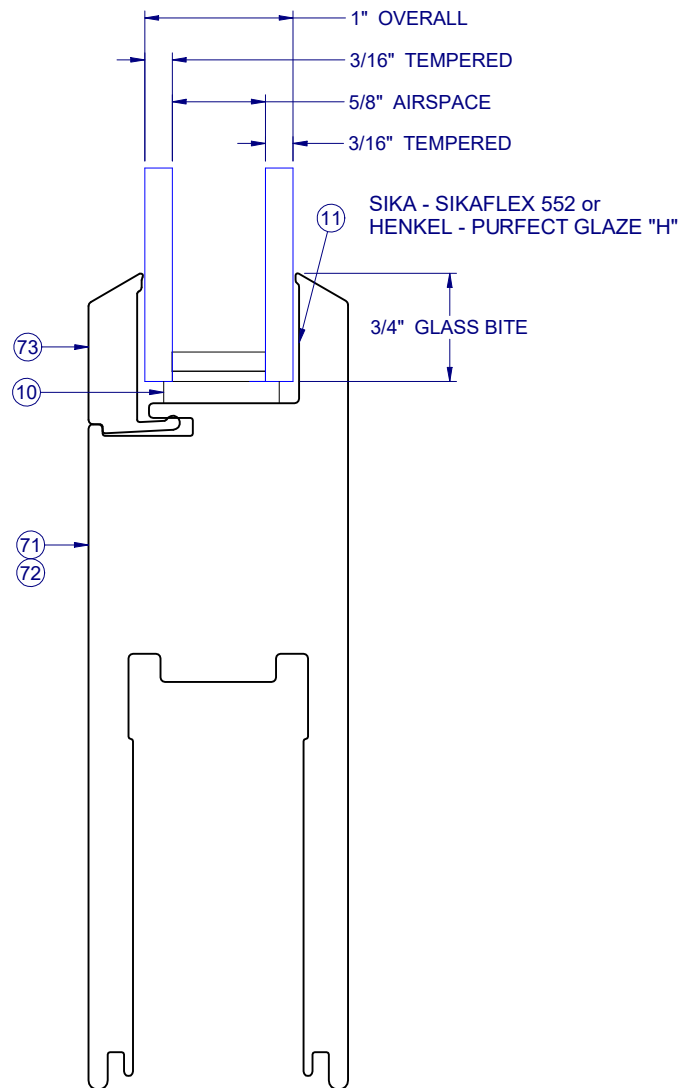
5/15/2020

LUCAS A. TURNER, P.E.  
TX PE # 115094  
TBPE REG. #F-18075  
2428 OLD NATCHEZ TRC TRL  
CAMDEN, TN 38320  
PH. 941-380-1574

SHEET DESCRIPTION:

**GLAZING DETAIL**

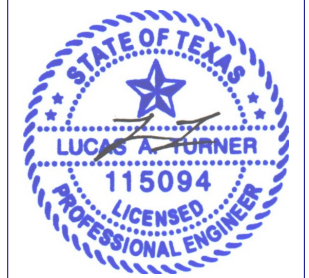
DRAWN BY:	DATE:
EMK	11/11/15
DWG #:	REV.:
TDI-640	C
SCALE:	SHEET
1:1	4 OF 13



**8700/10/50 PVC  
SWING DOOR  
NON-IMPACT**

NO.:	DESCRIPTION:	BY:	DATE:
C	IBC/IRC REF. 2018 UPDATE	JLD	4/27/20
B	REVISED TO TDI REQUEST	JML	3/21/17
A	REVISED TO TDI REQUEST	JML	8/2/16

REVISIONS



5/15/2020

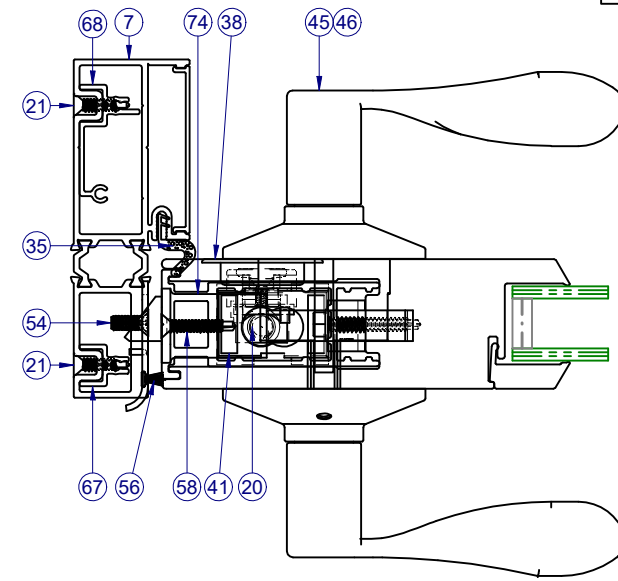
LUCAS A. TURNER, P.E.  
TX PE # 115094  
TBPE REG. #F-18075  
2428 OLD NATCHEZ TRC TRL  
CAMDEN, TN 38320  
PH. 941-380-1574

SHEET DESCRIPTION:

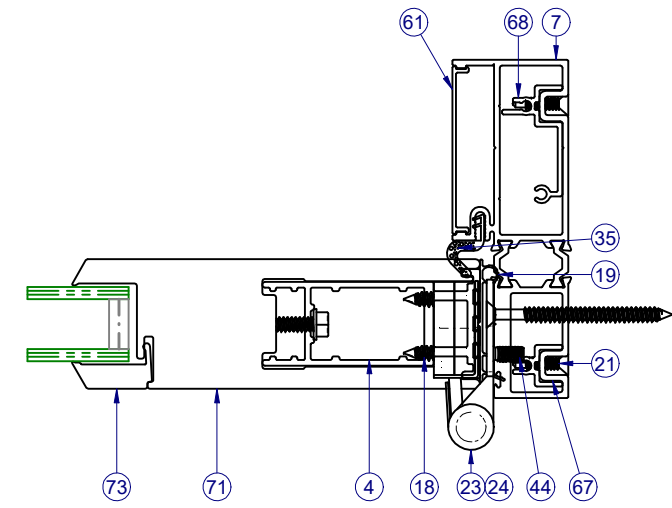
**SECTION VIEWS  
SINGLE DOOR**

DRAWN BY:	DATE:
EMK	11/11/15
DWG #:	REV.:
TDI-640	C
SCALE:	SHEET
1:2	5 OF 13

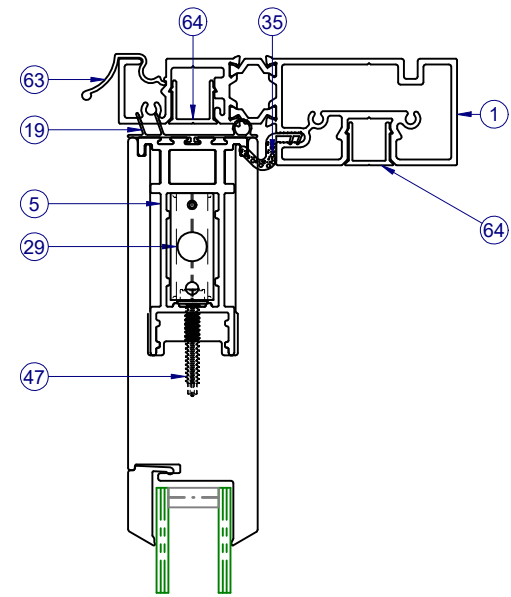
INTERIOR



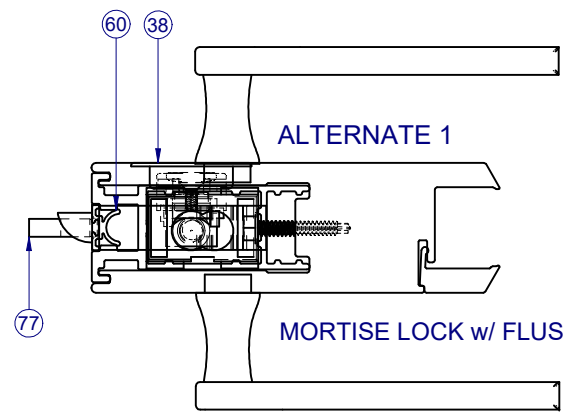
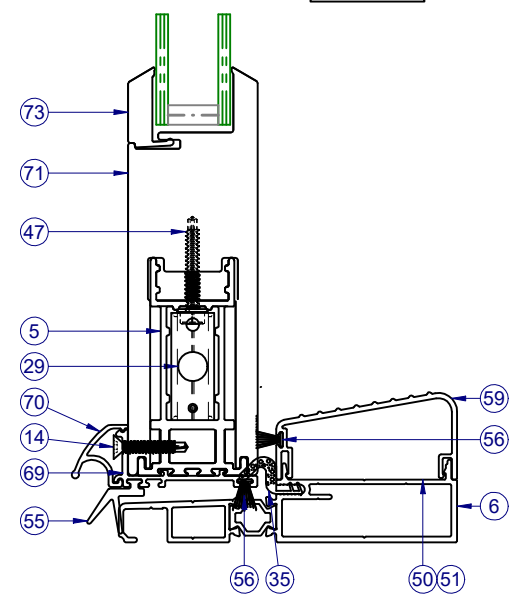
SECTION VIEW B-B



INTERIOR

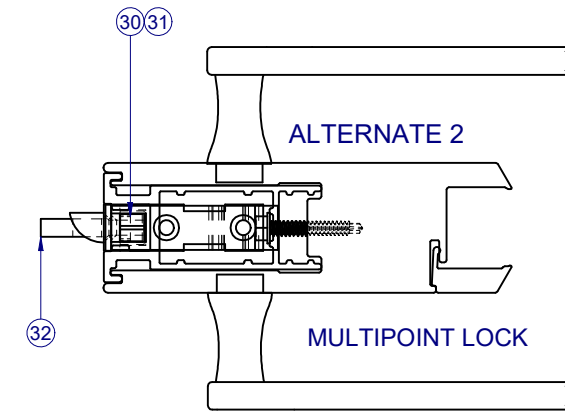


SECTION VIEW A-A



ALTERNATE 1

MORTISE LOCK w/ FLUSH BOLT



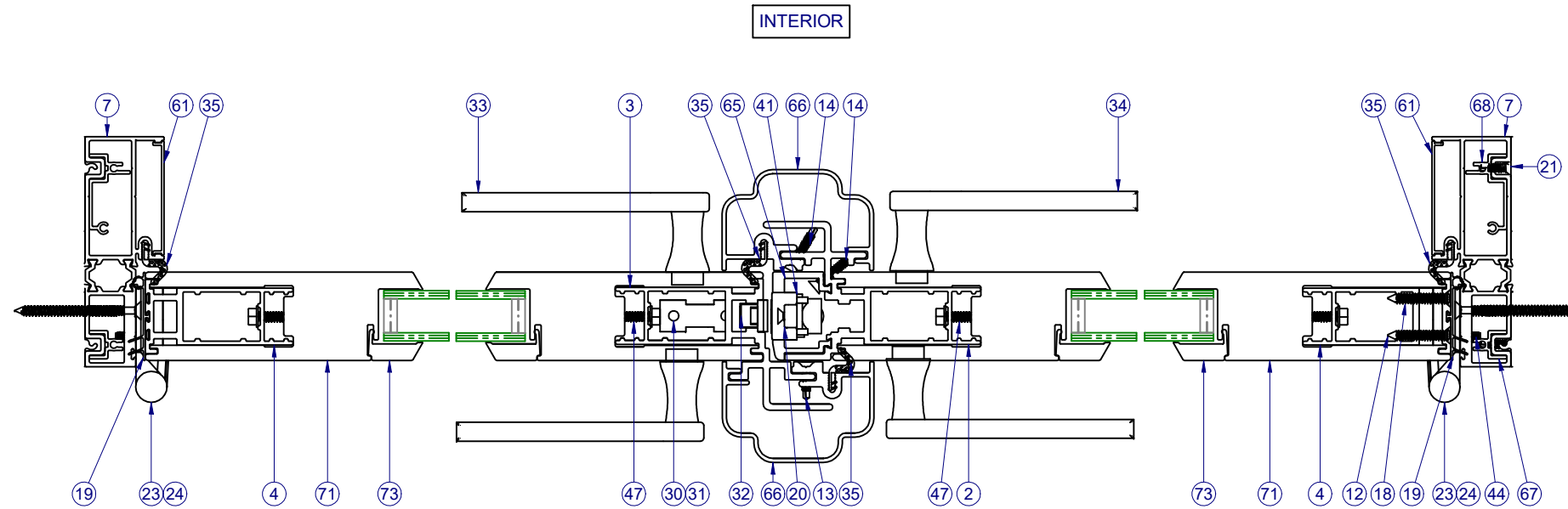
ALTERNATE 2

MULTIPOINT LOCK

ITEMS NOT SHOWN FOR CLARITY:  
10-12, 13, 15-17, 22, 43, 48, 54, 57-58

ITEMS NOT USED IN VERSION SHOWN:  
2-3, 8-9, 15-16, 25-28, 30-34, 36-40, 43, 52-53, 60, 62, 65-66, 72, 76

**8700/10/50 PVC  
SWING DOOR  
NON-IMPACT**



SECTION VIEW C-C

NOTE: VERTICAL SECTION SIMILAR  
TO SINGLE DOOR, SEE SHEET 5

ITEMS NOT SHOWN FOR CLARITY:  
10-13, 15-17, 22, 26-28, 36-39, 43, 54, 57

ITEMS NOT USED IN VERSION SHOWN:  
8-9, 15-16, 25, 40, 42, 45-46, 48, 52-53, 58, 60, 74, 76

NO.	DESCRIPTION	BY	DATE
C	IBC/IRC REF. 2018 UPDATE	JLD	4/27/20
B	REVISED TO TDI REQUEST	JML	3/21/17
A	REVISED TO TDI REQUEST	JML	8/2/16



5/15/2020

LUCAS A. TURNER, P.E.  
TX PE # 115094  
TBPE REG. #F-18075  
2428 OLD NATCHEZ TRC TRL  
CAMDEN, TN 38320  
PH. 941-380-1574

SHEET DESCRIPTION:

SECTION VIEWS  
FRENCH DOOR

DRAWN BY:	DATE:
EMK	11/11/15
DWG #:	REV.:
TDI-640	C
SCALE:	SHEET
1:2.5	6 OF 13

**8700/10/50 PVC  
SWING DOOR  
NON-IMPACT**

NO.:	DESCRIPTION:	BY:	DATE:
C	IBC/IRC REF. 2018 UPDATE	JLD	4/27/20
B	REVISED TO TDI REQUEST	JML	3/21/17
A	REVISED TO TDI REQUEST	JML	8/2/16



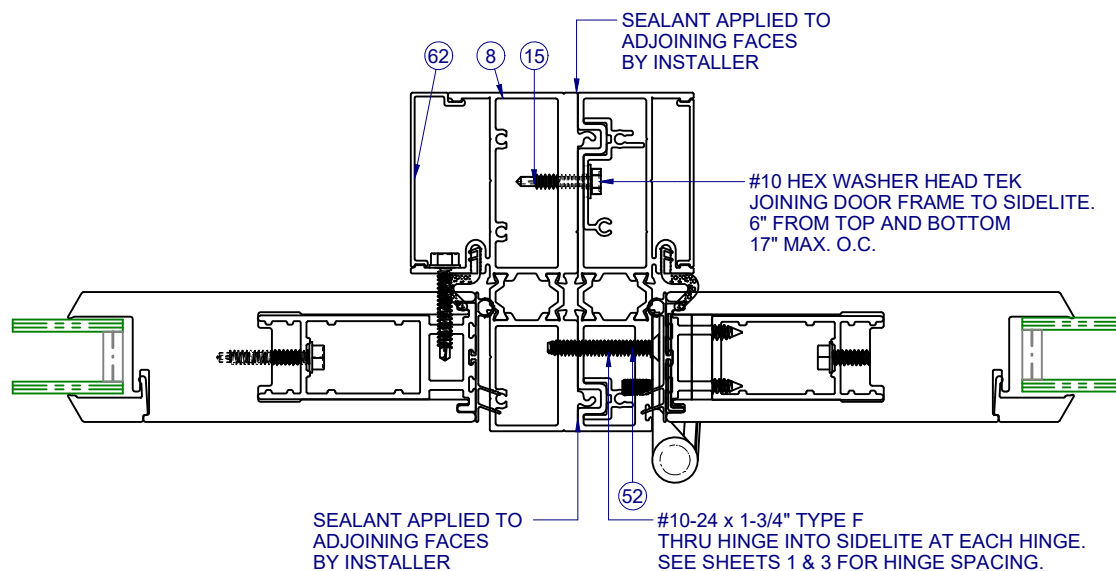
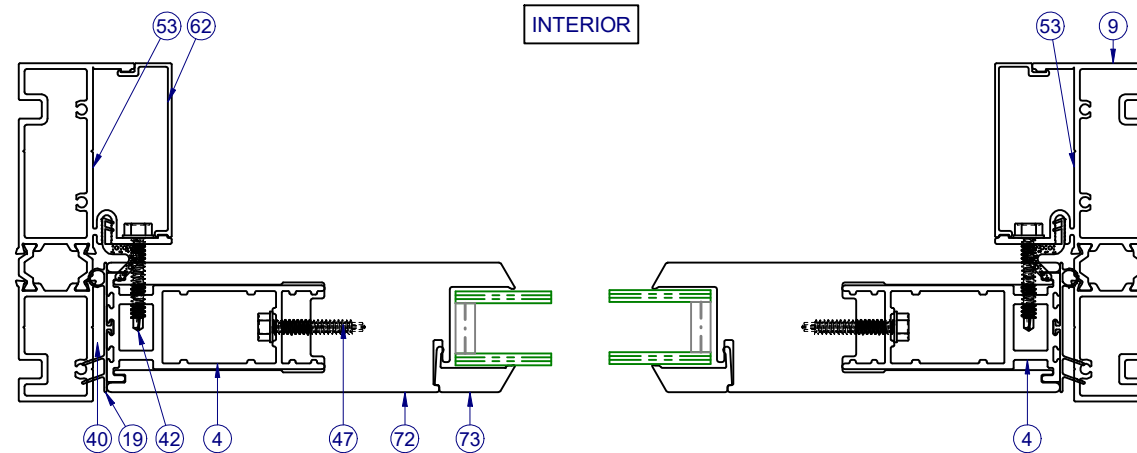
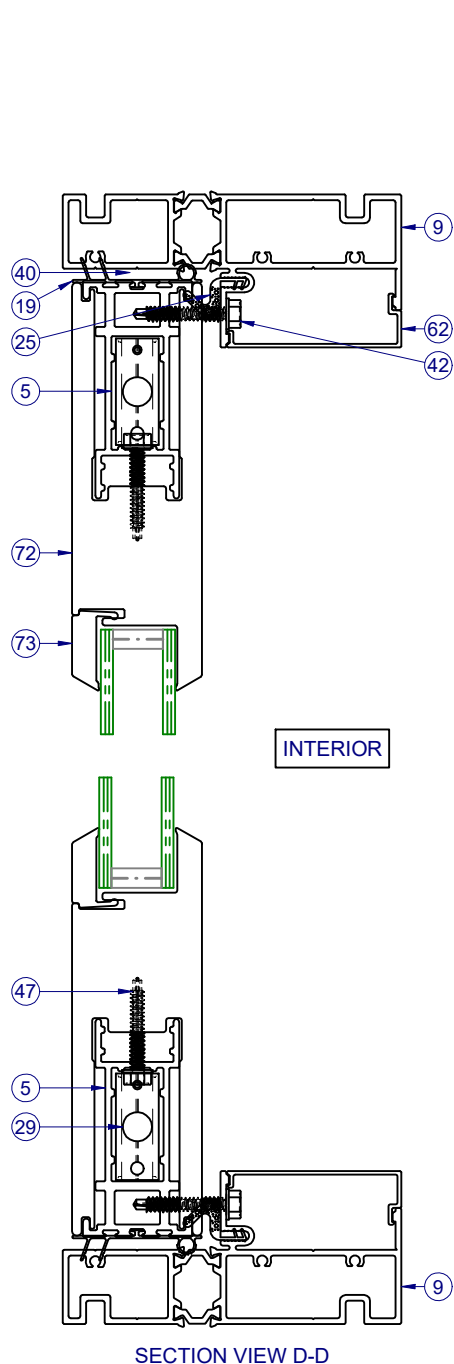
5/15/2020

LUCAS A. TURNER, P.E.  
TX PE # 115094  
TBPE REG. #F-18075  
2428 OLD NATCHEZ TRC TRL  
CAMDEN, TN 38320  
PH. 941-380-1574

SHEET DESCRIPTION:

**SECTION VIEWS  
ATTACHED SIDELITE**

DRAWN BY:	DATE:
EMK	11/11/15
DWG #:	REV.:
TDI-640	C
SCALE:	SHEET
1:2	7 OF 13



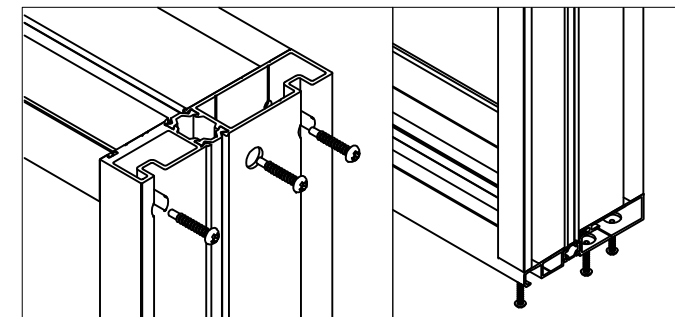
ITEMS NOT SHOWN FOR CLARITY:  
10-11, 16, 22, 28, 43, 57

ITEMS NOT USED IN VERSION SHOWN:  
1-3, 6-15, 17-18, 20-21, 23-24, 26-27, 30-39, 41, 44-46, 48-52, 54-56, 58-61, 63-71, 74-76

PARTS LIST				
ITEM	PART #	DESCRIPTION	MATERIAL	VENDOR
1	H-1833	MAIN FRAME, HEAD	ALUM	KEYMARK
2	H-1857	ASTRAGAL, INACTIVE, FD, PVC	ALUM	KEYMARK
3	H-1858	ASTRAGAL, ACTIVE, FD, PVC	ALUM	KEYMARK
4	H-1860	REINFORCEMENT, VERT.	ALUM	KEYMARK
5	H-1861	REINFORCEMENT, HORIZ	ALUM	KEYMARK
6	H-1878	MAIN FRAME, SILL	ALUM	KEYMARK
7	H-1880	MAINFRAME, JAMB	ALUM	KEYMARK
8	H-1881	MAINFRAME, SIDELITE @ DOOR	ALUM	KEYMARK
9	H-1900	MAINFRAME, SIDELITE @ JAMB, HEAD, SILL	ALUM	KEYMARK
10	P-3039	SETTING BLOCK, 1/8 X 1 X 2		FRANKLOWE
11		SIKAFLEX 552 or PURFECT GLAZE "H"		SIKA - HENKEL
12	P-3503	SCREW #8 X 1/2" PH TRUSS SS @ ASTRAGAL CAP		FASTENAL
13	P-3511	SCREW #8 x 5/8" SQ. PAN TEK @ TIEROD BRKT		FASTENAL
14	P-3587	SCREW #8 X 1", PH FLAT TEK @ ASTRAGAL, INSERT, LOCK		FASTENAL
15	P-3767	SCREW, #10 X 1" HEX HEAD, TEK @ SIDELITE		FASTENAL
16	P-4146	SCREW #8 X 3/4 PHIL, FLAT SS TEK @ SIDELITE SHIM		FASTENAL
17	P-4278	FUZZY PAD, .200" x 1.250" W/ADHESIVE		ULTRAFAB
18	P-4522	#10 x 1 1/4", PH FLAT, SMS - HINGE @ PANEL		FASTENAL
19	P-4774B	WSTP, BULB/LEAFS, PANEL		AMESBURY
20	P-4790	FLUSH BOLT, ASSM, TOP/BTM		SULLIVAN
21	P-4794	SCREW #8 x 5/8" SQ. FLAT TEK @ INSERT ATTACH		FASTENAL
22	P-4802	ALL THREADED ROD (TIE ROD)		McMASTER
23	P-4807	HINGE, GUIDE		HOPPE
24	P-4808/P4809	HINGE, SET		HOPPE
25	P-4814	WSTP, .50X.750 FOLDED BULB SEAL, @ SIDELITE		AMESBURY
26	P-4863	LOCK STRIKE PLATE		PADDOCK
27	P-4864	RHINO STRIKE PLATE		PADDOCK
28	P-4866A	GUIDE, TIE ROD	NYLON	M&M
29	P-4871	TIE ROD BRACKET	ZINC	SULLIVAN
30	P-4885	SHOOT BOLT, TOP		PADDOCK
31	P-4886	SHOOT BOLT, BOTTOM		PADDOCK
32	P-4851	LOCKBAR, INACTIVE, 8 FT		PADDOCK
32	P-4884	LOCKBAR, MULTI-POINT, 5PT, 8 FT		PADDOCK
32	P-4901	LOCKBAR, MULTI-POINT, 4PT, 6'8 FT		PADDOCK
32	P-4902	LOCKBAR, INACTIVE, 6'8 FT		PADDOCK
33	P-4903	HANDLE SET, ACTIVE		PADDOCK
34	P-4905	HANDLE SET, INACTIVE		PADDOCK
35	P-4913	WSTP, .50X.50 FOLDED BULB SEAL, @ DOOR		SCHLAGE
36	P-4917	CAP, ASTRAGAL, OUTSIDE	NYLON	M&M
37	P-4918	GUIDE, FLUSH BOLT, INACTIVE PNL		M&M
38	P-4922	COVER, INTERIOR, FLUSH BOLT	NYLON	M&M
39	P-4925	CAP, ASTRAGAL, INSIDE	NYLON	M&M
40	P-4926	SHIM, SIDELITE, DOOR SHIPPING BLOCK	NYLON	M&M
41	P-4927	GUIDE, FLUSH BOLT	NYLON	M&M
42	P-4930	SCREW, #10 X 1-1/4" HEX HEAD TEK @ SIDELITE ATTACH		FASTENAL
43	P-4933	NUT, 3/8"-16 FLANGED W/ SERRATED LIP, SS, @ PANEL		McMASTER
44	P-4934	SCREW, #12-24 X 1/2", PH FLAT, MS, @ HINGE		FASTENAL
45	P-4936	DOOR KNOB, ACTIVE PANEL *		DELANY
46	P-4937	DEADBOLT, ACTIVE PANEL *		DELANY
47	P-4969	SCREW, #10 X 2" REINF. ATTACH.		FASTENAL
48	P-4997	STRIKE, DEADBOLT		PADDOCK
49	P-5127	SCREW, #12 X 2", PH PAN, SMS, ANCHOR		FASTENAL
50	P-5130	GASKET, DOOR SILL, FRONT	FOAM	HO PRODUCTS

\* ALTERNATE APPROVED LOCKSETS:  
PAMEX GRADE 2 LOCKSET AND DEADBOLT

PARTS LIST				
ITEM	PART #	DESCRIPTION	MATERIAL	VENDOR
51	P-5131	GASKET, DOOR SILL, BACK	FOAM	HO PRODUCTS
52	P-5134	SCREW, #10 X 1-3/4" FLAT SQUARE TYPE F @ HINGE		FASTENAL
53	P-5151	GASKET, SIDELITE	FOAM	HO PRODUCTS
54	P-5157	SCREW #10-24 x 1/2", FI Undercut PH, 18-8SS @ KEEPER		FASTENAL
55	P-5158	BOTTOM SEAL	RUBBER	TEAM
56	P-5172	WSTP, .370 X .187, TRI FIN, BLACK		ULTRAFAB
57	P-5174	SCREW #8 X 3/4" HEX WASHER HEAD, @ FRAME		FASTENAL
58	P-5186	SCREW #8-32 x 1-1/4" PH, FL MS, SS @ PLUNGER	SS	FASTENAL
59	S-1783	THRESHOLD, HIGH RISE	ALUM	KEYMARK
60	S-1784	INSERT, REINFORCEMENT	ALUM	KEYMARK
61	S-1806	COVER, JAMB, ANCHOR	ALUM	KEYMARK
62	S-1816	COVER, JAMBS, HEAD, SILL, SIDELITE	ALUM	KEYMARK
63	S-1817	DRIP CAP	ALUM	KEYMARK
64	S-1840	COVER, HEAD, ANCHOR	ALUM	KEYMARK
65	S-1849	INSERT, INACTIVE PNL, LOCK HARDWARE		KEYMARK
66	S-1859	COVER, ASTRAGAL, FD	ALUM	KEYMARK
67	S-1864	INSERT, FRONT, BTM ATTACH SILL	ALUM	KEYMARK
68	S-1865	INSERT, BACK, BTM ATTACH SILL	ALUM	KEYMARK
69	S-1915	BASE, SWEEP	ALUM	KEYMARK
70	S-1916	DRIP COVER, SWEEP	ALUM	KEYMARK
71	S-6083	PANEL, TOP/BTM RAIL, SIDES - DOOR	PVC	MIKRON
72	S-6083	PANEL, TOP/BTM RAIL, SIDES - SIDELITE	PVC	MIKRON
73	S-6084	GLAZING BEAD (1")	PVC	MIKRON
74	H-1888	REINFORCEMENT, VERT., SINGLE DOOR	ALUM	KEYMARK
75	GLASS	SEE SHEET 4		
76	H-1862	REINFORCEMENT, VERT.	ALUM	KEYMARK
77	P-4887	MORTISE LOCK		PADDOCK



HEAD

SILL

ALL FRAMES ARE MECHANICALLY FASTENED



1900 SW 44TH AVE.  
OCALA, FLORIDA 34474  
WWW.CWS.CC

**8700/10/50 PVC SWING DOOR NON-IMPACT**

				4/27/20	DATE:
			JLD	3/21/17	
			JML	8/2/16	
			JML		
			BY:		
			NO.:	DESCRIPTION:	REVISIONS
			C	IBC/IRC REF. 2018 UPDATE	
			B	REVISED TO TDI REQUEST	
			A	REVISED TO TDI REQUEST	



5/15/2020

LUCAS A. TURNER, P.E.  
TX PE # 115094  
TBPE REG. #F-18075  
2428 OLD NATCHEZ TRC TRL  
CAMDEN, TN 38320  
PH. 941-380-1574  
SHEET DESCRIPTION:

BOM

DRAWN BY:	DATE:
EMK	11/11/15
DWG #:	REV.:
TDI-640	C
SCALE:	SHEET
1:1	8 OF 13



**8700/10/50 PVC SWING DOOR NON-IMPACT**

NO.:	DESCRIPTION:	BY:	DATE:
C	IBC/IRC REF. 2018 UPDATE	JLD	4/27/20
B	REVISED TO TDI REQUEST	JML	3/21/17
A	REVISED TO TDI REQUEST	JML	8/2/16

REVISIONS



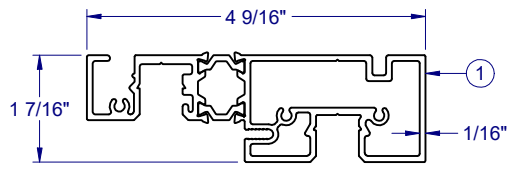
5/15/2020

LUCAS A. TURNER, P.E.  
TX PE # 115094  
TBPE REG. #F-18075  
2428 OLD NATCHEZ TRC TRL  
CAMDEN, TN 38320  
PH. 941-380-1574

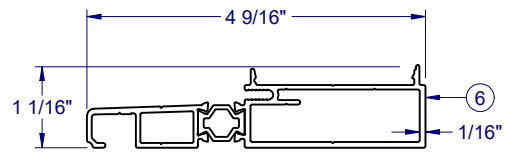
SHEET DESCRIPTION:

**EXTRUSIONS**

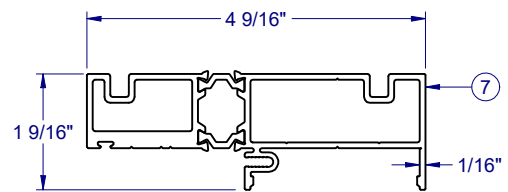
DRAWN BY:	DATE:
EMK	11/11/15
DWG #:	REV.:
TDI-640	C
SCALE:	SHEET
1:2	9 OF 13



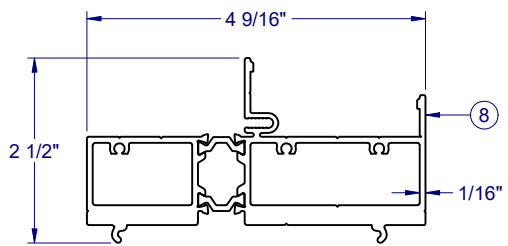
DOOR HEAD-1833



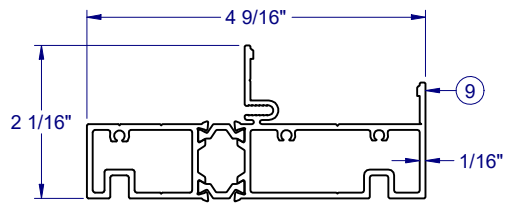
DOOR SILL-1878



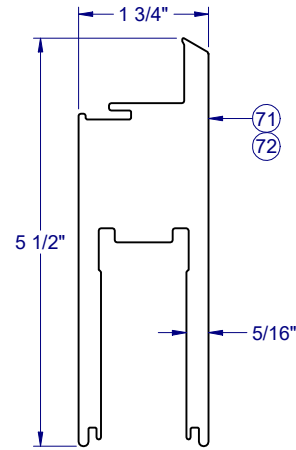
DOOR JAMB-1880



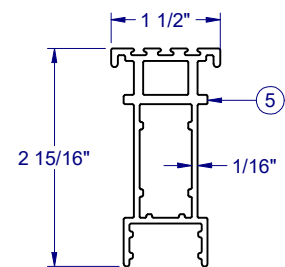
SIDELITE-1881



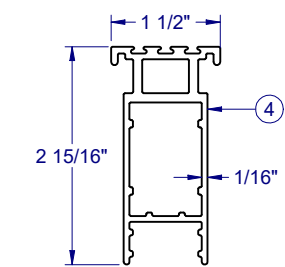
SIDELITE-1900



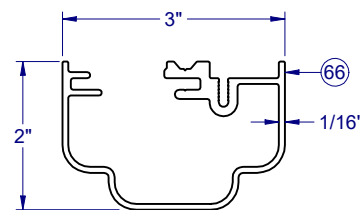
PVC DOOR PANEL - 6083



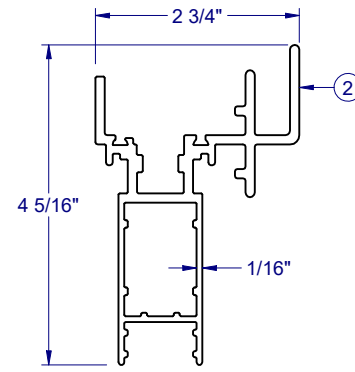
REINFORCEMENT - 1861



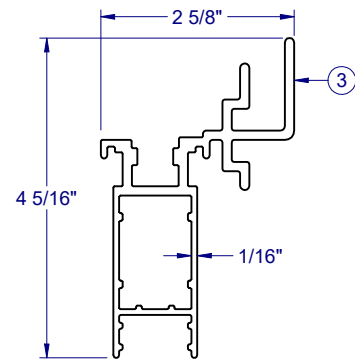
REINFORCEMENT-1860



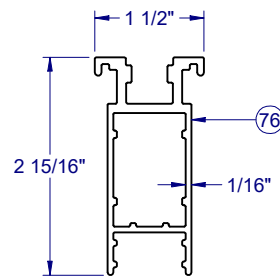
ASTRAGAL COVER-1859



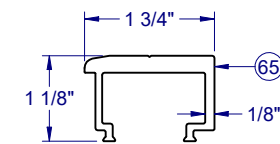
REINFORCEMENT - 1857



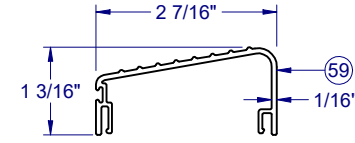
REINFORCEMENT - 1858



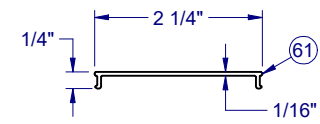
REINFORCEMENT - 1862



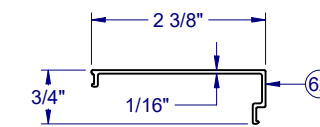
INSERT, INACTIVE PNL - 1849



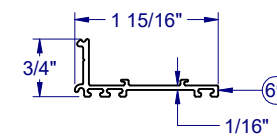
THRESHOLD - 1783



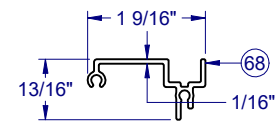
FRAME COVER - 1806



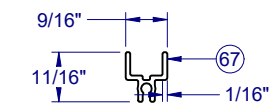
SIDELITE COVER - 1816



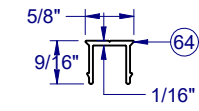
BASE SWEEP - 1915



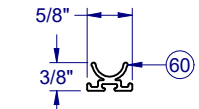
INSERT, BACK - 1865



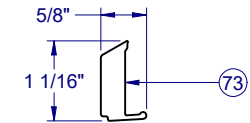
INSERT, FRONT - 1864



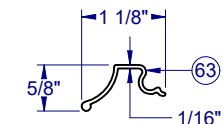
HEAD COVER - 1840



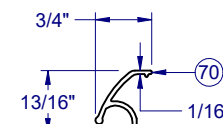
FILLER - 1784



PVC GLAZING BEAD - 6084



DRIP CAP - 1817



DRIP COVER - 1916

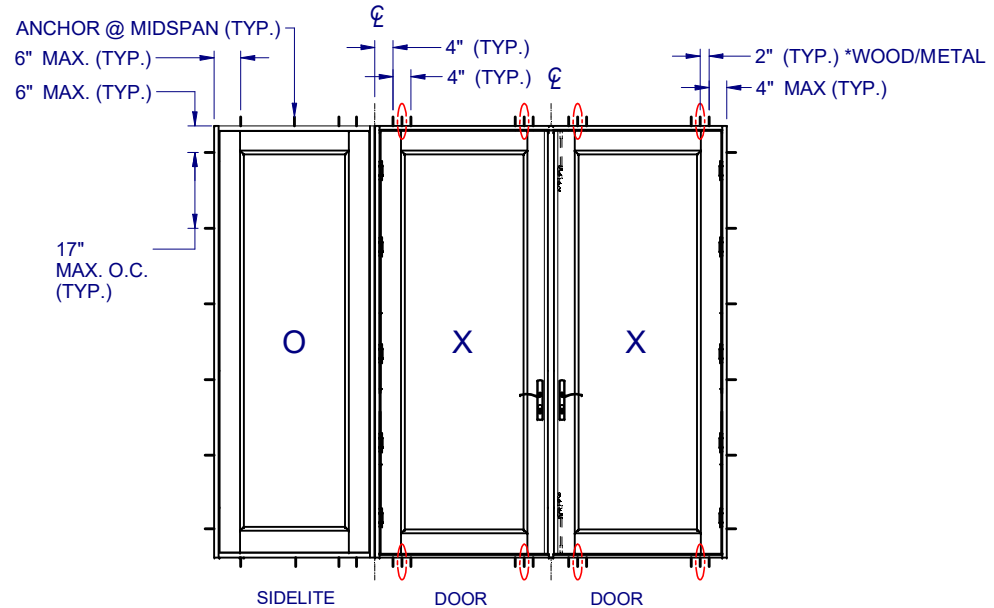
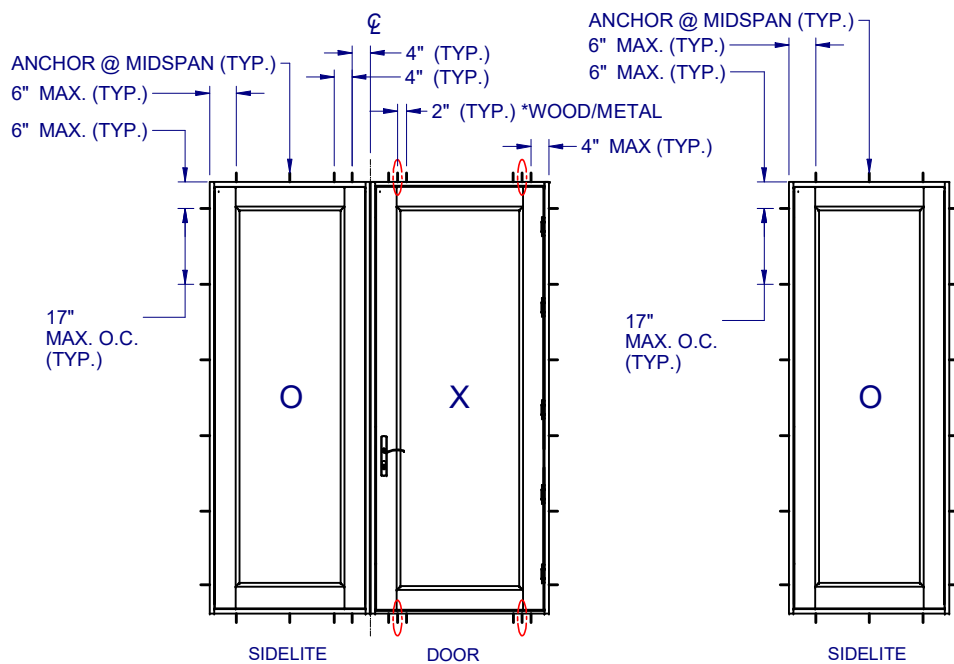
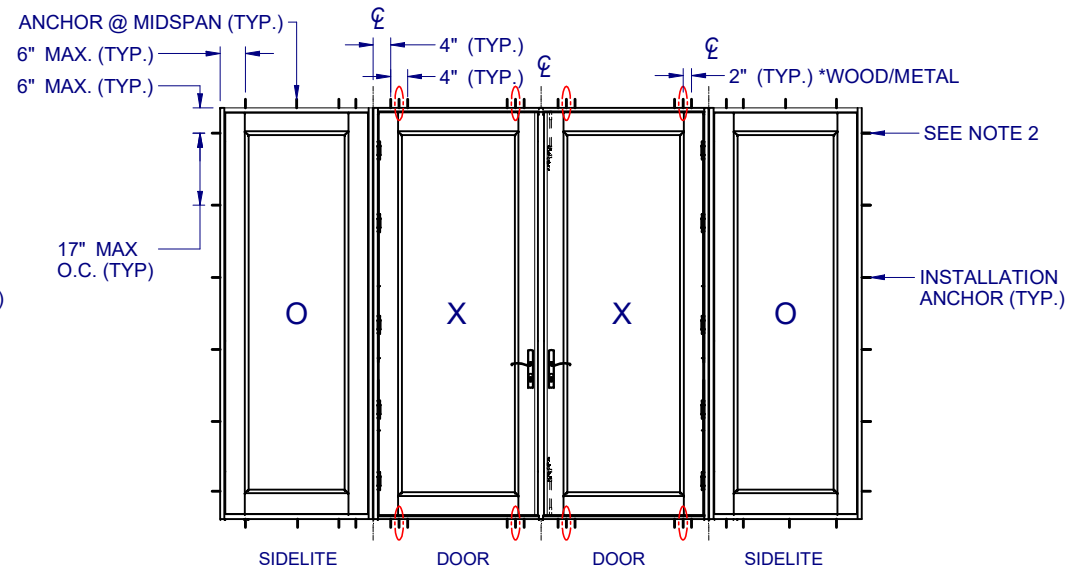
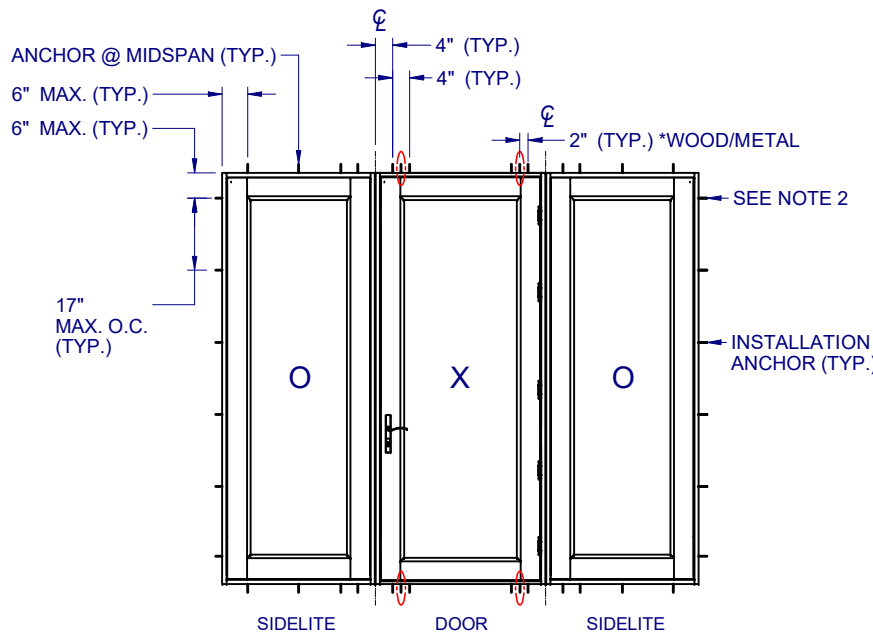


**\* CIRCLED ANCHOR LOCATIONS REQ'D ONLY IN WOOD AND METAL INSTALLATIONS. DO NOT INSTALL THESE ANCHORS INTO MASONRY.**

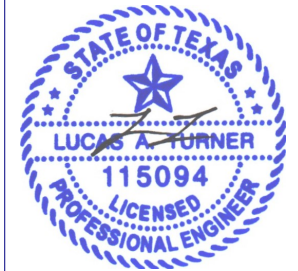


1900 SW 44TH AVE.  
OCALA, FLORIDA 34474  
WWW.CWS.CC

**8700/10/50 PVC SWING DOOR NON-IMPACT**



NO.:	DESCRIPTION:	BY:	DATE:
C	IBC/IRC REF. 2018 UPDATE	JLD	4/27/20
B	REVISED TO TDI REQUEST	JML	3/21/17
A	REVISED TO TDI REQUEST	JML	8/2/16



5/15/2020

LUCAS A. TURNER, P.E.  
TX PE # 115094  
TBPE REG. #F-18075  
2428 OLD NATCHEZ TRC TRL  
CAMDEN, TN 38320  
PH. 941-380-1574

SHEET DESCRIPTION:

**ANCHOR SCHEDULE AND NOTES**

DRAWN BY:	DATE:
EMK	11/11/15
DWG #:	REV.:
TDI-640	C
SCALE:	SHEET
1:33.33	1 OF 13

**8700/10/50 PVC  
SWING DOOR  
NON-IMPACT**

				4/27/20	JLD	BY:	DATE:
				3/21/17	JML		
				8/2/16	JML		
						NO.:	DESCRIPTION:
							REVISIONS



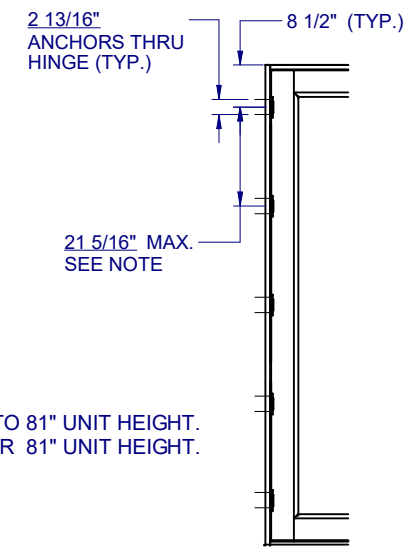
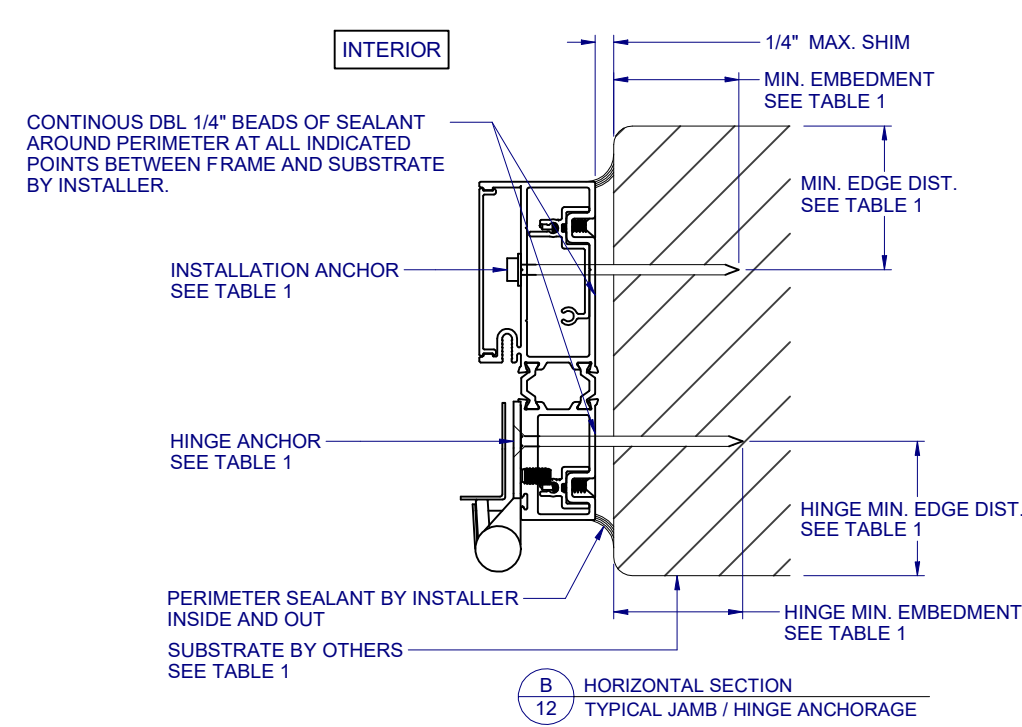
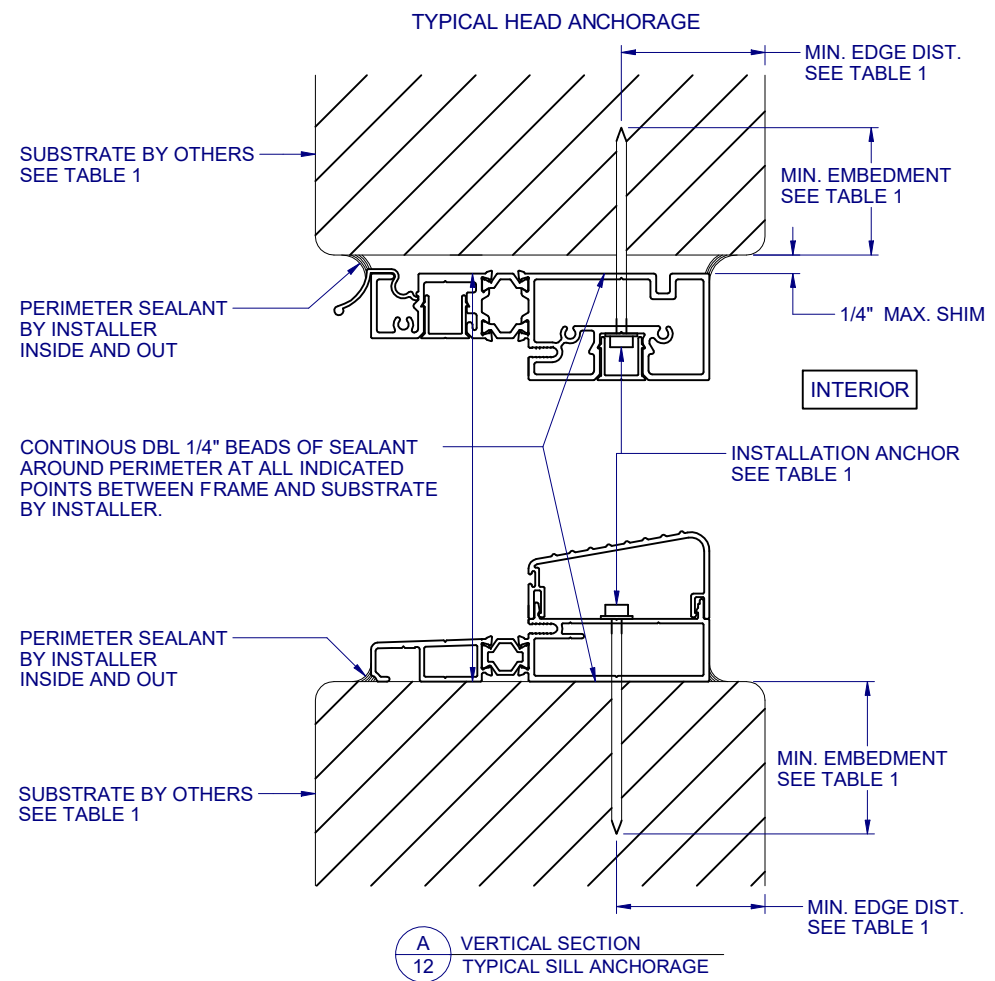
5/15/2020

LUCAS A. TURNER, P.E.  
TX PE # 115094  
TBPE REG. #F-18075  
2428 OLD NATCHEZ TRC TRL  
CAMDEN, TN 38320  
PH. 941-380-1574

SHEET DESCRIPTION:

**INSTALLATION DETAILS  
DOOR**

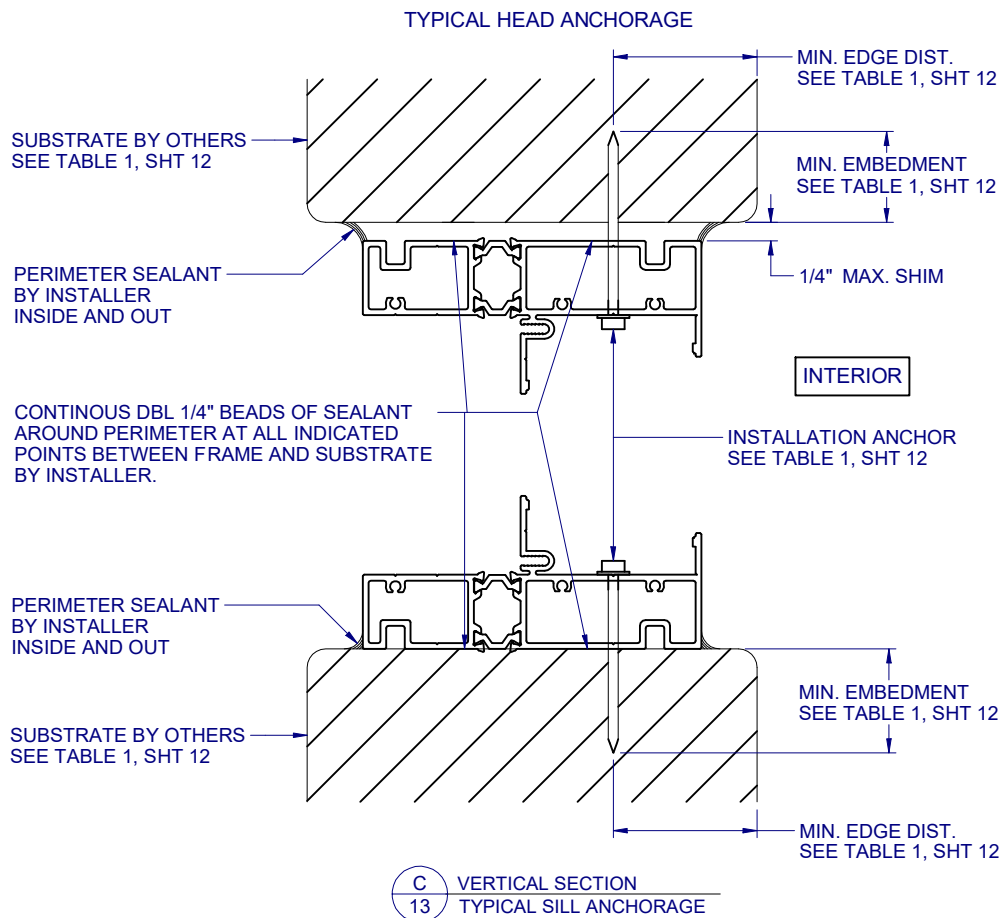
DRAWN BY:	DATE:
EMK	11/11/15
DWG #:	REV.:
TDI-640	C
SCALE:	SHEET
1:2	12 OF 13



NOTE:  
HINGE SPACINGS ARE:  
8-1/2" FROM ENDS  
21-5/16" MAX. O.C. FOR UP TO 81" UNIT HEIGHT.  
20" MAX. O.C. FOR OVER 81" UNIT HEIGHT.

HINGE LAYOUT  
1:30

SUBSTRATE TYPE	ANCHOR TYPE	MIN. EMBEDMENT	MIN. EDGE DIST.
CONCRETE (2.85 KSI MIN.)	1/4" ELCO ULTRACON	1"	2-1/2"
GROUT-FILLED CMU (ASTM C-90)	1/4" ELCO ULTRACON	1-3/4"	2-1/2"
2X MIN. SOUTHERN PINE (G=0.55)	1/4" ELCO ULTRACON	1-3/8"	7/8"
2X MIN. SOUTHERN PINE (G=0.55)	#12 WOOD SCREW	1-3/8"	7/8"
16 GAUGE (0.060") MIN. STEEL STUD (33 KSI YIELD MIN)	#12-14 HILTI KWIK-FLEX OR ITW TEKS SELF-DRILLING SCREW	FULL THREAD THRU 0.060"	1/2"
1/8" ALUM. (6063-T5 MIN.) OR 1/8" STEEL (33 KSI MIN.)	#12 GRADE 5 SELF-TAPPING / DRILLING SCREW	FULL THREAD THRU 0.125"	1/2"
HINGE ANCHORS INTO CONCRETE (2.85 KSI MIN.)	3/16" ELCO ULTRACON	1-3/4"	2-1/2"
HINGE ANCHORS INTO GROUT-FILLED CMU (ASTM C-90)	3/16" ELCO ULTRACON	1-1/4"	2-1/2"
HINGE ANCHORS INTO 2X MIN. SOUTHERN PINE (G=0.55)	#12 PHILLIPS PH SHEET METAL SCREW	2"	7/8"
HINGE ANCHORS INTO 16 GAUGE (0.060") MIN. STEEL STUD (33 KSI YIELD MIN)	#10-16 HILTI KWIK-FLEX OR ITW TEKS SELF-DRILLING SCREW	FULL THREAD THRU 0.060"	1/2"
HINGE ANCHORS 1/8" ALUM. (6063-T5 MIN.) OR 1/8" STEEL (33 KSI MIN.)	#10 GRADE 5 SELF-TAPPING / DRILLING SCREW	FULL THREAD THRU 0.125"	1/2"



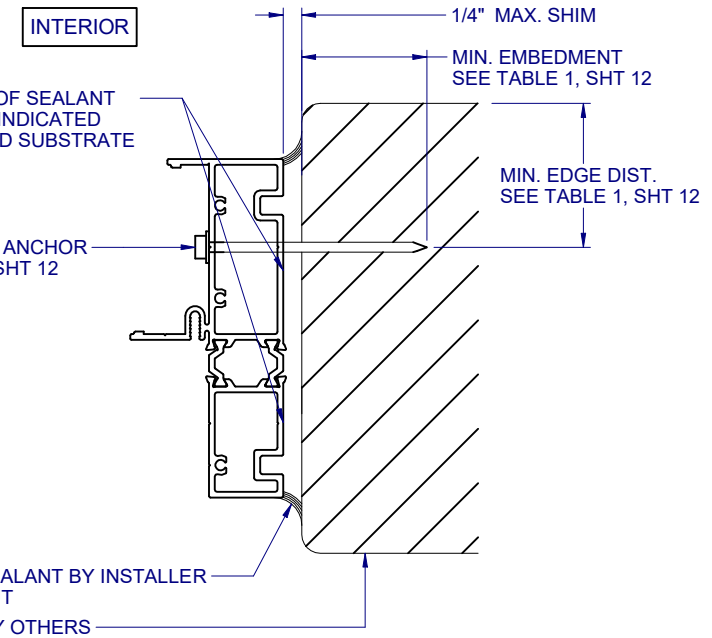
**C**  
13 VERTICAL SECTION  
TYPICAL SILL ANCHORAGE

CONTINUOUS DBL 1/4" BEADS OF SEALANT AROUND PERIMETER AT ALL INDICATED POINTS BETWEEN FRAME AND SUBSTRATE BY INSTALLER.

INSTALLATION ANCHOR  
SEE TABLE 1, SHT 12

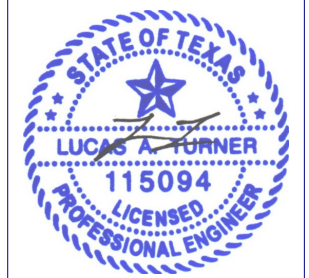
PERIMETER SEALANT BY INSTALLER  
INSIDE AND OUT  
SUBSTRATE BY OTHERS  
SEE TABLE 1, SHT 12

**D**  
13 HORIZONTAL SECTION  
TYPICAL JAMB / HINGE ANCHORAGE



**8700/10/50 PVC  
SWING DOOR  
NON-IMPACT**

NO.:	DESCRIPTION:	BY:	DATE:
C	IBC/IRC REF. 2018 UPDATE	JLD	4/27/20
B	REVISED TO TDI REQUEST	JML	3/21/17
A	REVISED TO TDI REQUEST	JML	8/2/16



5/15/2020

LUCAS A. TURNER, P.E.  
TX PE # 115094  
TBPE REG. #F-18075  
2428 OLD NACHEZ TRC TRL  
CAMDEN, TN 38320  
PH. 941-380-1574

SHEET DESCRIPTION:  
**INSTALLATION DETAILS  
SIDELITE**

DRAWN BY: <b>EMK</b>	DATE: 11/11/15
DWG #: <b>TDI-640</b>	REV.: <b>C</b>
SCALE: 1:2	SHEET 13 OF 13