

11/22/2021 9:08 AM  
s:\projects\andersen windows\lfdi-21-0937 a-series fiberglass clad wood glazed is side hinged doors, impact resistant\dwg\awd060.dwg

# ANDERSEN CORPORATION

## A-SERIES FRENCHWOOD HINGED PATIO DOOR - INSWING WITH STORMWATCH PROTECTION (IMPACT)



100 FOURTH AVE NORTH  
BAYPORT, MN 55003-1096  
PH: (651) 264-5150 FX: (651) 264-5485

### INSTALLATION NOTES:

- ONE (1) INSTALLATION ANCHOR IS REQUIRED AT EACH ANCHOR LOCATION SHOWN, UNLESS OTHERWISE STATED.
- THE NUMBER OF INSTALLATION ANCHORS DEPICTED IS THE MINIMUM NUMBER OF ANCHORS TO BE USED FOR PRODUCT INSTALLATION.
- INSTALL INDIVIDUAL INSTALLATION ANCHORS WITHIN A TOLERANCE OF ±1/2 INCH OF THE DEPICTED LOCATION IN THE ANCHOR LAYOUT DETAIL (I.E., WITHOUT CONSIDERATION OF TOLERANCES). TOLERANCES ARE NOT CUMULATIVE FROM ONE INSTALLATION ANCHOR TO THE NEXT.
- FOR INSTALLATION THROUGH 1X BUCK TO CONCRETE/MASONRY, OR DIRECTLY INTO CONCRETE/MASONRY, USE 3/16 INCH OR 1/4 INCH ITW TAPCON OF SUFFICIENT LENGTH TO ACHIEVE 1 3/4 INCH MINIMUM EMBEDMENT.
- FOR INSTALLATION INTO 2X BUCK USE #10 WOOD SCREW OF SUFFICIENT LENGTH TO ACHIEVE 1 1/2 INCH MINIMUM EMBEDMENT INTO WOOD SUBSTRATE.
- FOR INSTALLATION THROUGH METAL FRAME USE #10 SELF-TAPPING SCREW OF SUFFICIENT LENGTH TO ACHIEVE 3 THREADS MINIMUM PENETRATION BEYOND METAL FRAME SUBSTRATE.
- MINIMUM EMBEDMENT AND EDGE DISTANCE EXCLUDE WALL FINISHES, INCLUDING BUT NOT LIMITED TO STUCCO, FOAM, BRICK VENEER, AND SIDING.
- INSTALLATION ANCHORS AND ASSOCIATED HARDWARE MUST BE MADE OF CORROSION RESISTANT MATERIAL OR HAVE A CORROSION RESISTANT COATING.
- FOR GROUT FILLED BLOCK, DO NOT INSTALL INSTALLATION ANCHORS INTO MORTAR JOINTS. EDGE DISTANCE IS MEASURED FROM FREE EDGE OF BLOCK OR EDGE OF MORTAR JOINT INTO FACE SHELL OF BLOCK.
- INSTALLATION ANCHORS SHALL BE INSTALLED IN ACCORDANCE WITH ANCHOR MANUFACTURER'S INSTALLATION INSTRUCTIONS, AND ANCHORS SHALL NOT BE USED IN SUBSTRATES WITH STRENGTHS LESS THAN THE MINIMUM STRENGTH SPECIFIED BY THE ANCHOR MANUFACTURER.
- INSTALLATION ANCHOR CAPACITIES FOR PRODUCTS HEREIN ARE BASED ON SUBSTRATE MATERIALS WITH THE FOLLOWING PROPERTIES:
  - WOOD - MINIMUM SPECIFIC GRAVITY OF 0.42.
  - CONCRETE - MINIMUM COMPRESSIVE STRENGTH OF 3000 PSI.
  - GROUT-FILLED CMU- UNIT STRENGTH CONFORMS TO ASTM C-90 WITH MINIMUM COMPRESSIVE STRENGTH OF 2000 PSI AND GROUT CONFORMS TO ASTM C 476, MINIMUM GROUT COMPRESSIVE STRENGTH OF 2000 PSI.
  - HOLLOW BLOCK CMU - UNIT STRENGTH CONFORMS TO ASTM C-90 WITH MINIMUM COMPRESSIVE STRENGTH OF 2000 PSI.
  - STEEL - MINIMUM YIELD STRENGTH OF 33 KSI. MINIMUM WALL THICKNESS OF 33 MIL (0.033" or 20 GAUGE). MIN. 1/2" EDGE DISTANCE.
  - ALUMINUM - MINIMUM 1/8" THICKNESS. (6063-T5)

### GENERAL NOTES:

- THE PRODUCT SHOWN HEREIN IS DESIGNED AND MANUFACTURED TO COMPLY WITH THE 2018 INTERNATIONAL BUILDING CODE AND INTERNATIONAL RESIDENTIAL, AND HAS BEEN EVALUATED ACCORDING TO THE FOLLOWING:
  - AAMA/WDMA/CSA 101/I.S.2/A440-17
  - ASTM E 1886-13a
  - ASTM E 1996-14a
- ADEQUACY OF THE EXISTING STRUCTURAL CONCRETE/MASONRY, 2X AND METAL STUD FRAMING AS A MAIN WIND FORCE RESISTING SYSTEM CAPABLE OF WITHSTANDING AND TRANSFERRING APPLIED PRODUCT LOADS TO THE FOUNDATION IS THE RESPONSIBILITY OF THE ENGINEER OR ARCHITECT OF RECORD FOR THE PROJECT OF INSTALLATION.
- 1X AND 2X BUCKS (WHEN USED) SHALL BE DESIGNED AND ANCHORED TO PROPERLY TRANSFER ALL LOADS TO THE STRUCTURE. BUCK DESIGN AND INSTALLATION IS THE RESPONSIBILITY OF THE ENGINEER OR ARCHITECT OF RECORD FOR THE PROJECT OF INSTALLATION.
- THE INSTALLATION DETAILS DESCRIBED HEREIN ARE GENERIC AND MAY NOT REFLECT ACTUAL CONDITIONS FOR A SPECIFIC SITE. IF SITE CONDITIONS CAUSE INSTALLATION TO DEVIATE FROM THE REQUIREMENTS DETAILED HEREIN, A LICENSED ENGINEER OR ARCHITECT SHALL PREPARE SITE SPECIFIC DOCUMENTS FOR USE WITH THIS DOCUMENT.
- APPROVED IMPACT PROTECTIVE SYSTEM **IS NOT REQUIRED** TO PROTECT THIS PRODUCT IN WIND ZONE 4 OR LESS.
- DOOR FRAME MATERIAL: *PONDEROSA PINE OR EQUIVALENT WITH FIBERGLASS CLADDING. (MIN SG = 0.40)*
- GLASS MEETS THE REQUIREMENTS OF ASTM E1300 GLASS CHARTS. SEE SHEET 5 FOR GLAZING DETAILS..
- DESIGNATIONS "X" AND "O" STAND FOR THE FOLLOWING:  
X: OPERABLE PANEL  
O: FIXED PANEL
- CUSTOM SIZES AVAILABLE UPON REQUEST. CUSTOM DESIGN PRESSURE WILL BE ASSIGNED EQUAL TO NEXT LARGER STANDARD SIZE
- IN ACCORDANCE WITH THE 2018 IBC, WOOD COMPONENTS SHALL HAVE BEEN PRESERVATIVE TREATED OR SHALL BE OF A DURABLE SPECIES AS DEFINED IN CHAPTER 23.

TABLE OF CONTENTS	
SHEET	SHEET DESCRIPTION
1	GENERAL AND INSTALLATION NOTES
2	ELEVATION AND ANCHOR LAYOUT
3	ELEVATION AND ANCHOR LAYOUT
4	ELEVATION AND ANCHOR LAYOUT
5	PRESSURE TABLES & GLAZING DETAILS
6	VERTICAL SECTIONS
7	HORIZONTAL SECTIONS
8	COMPONENTS AND BILL OF MATERIALS
9	LOCK COMPONENT DETAILS

WATER RATING	MISSILE IMPACT RATING
W/ WATER INFILTRATION	LARGE AND SMALL MISSILE IMPACT RATED

TITLE: A-SERIES FRENCHWOOD SIDELITE & TRANSOM DOOR WITH STORMWATCH (IMPACT)

GENERAL AND INSTALLATION NOTES

PREPARED BY: BUILDING DROPS, INC.  
398 E. DANIA BEACH BLVD., STE. 338  
DANIA BEACH, FL 33004  
PH: (954)399-8478  
FAX: (954)744-4738  
WEB: www.buildingdrops.com



REMARKS	BY	DATE
2018 IBC UPDATE	SH	10.06.21

THE INSTALLATION DETAILS DESCRIBED HEREIN ARE GENERIC AND MAY NOT REFLECT ACTUAL CONDITIONS FOR A SPECIFIC SITE. IF SITE CONDITIONS CAUSE INSTALLATION TO DEVIATE FROM THE REQUIREMENTS DETAILED HEREIN, A LICENSED ENGINEER OR ARCHITECT SHALL PREPARE SITE SPECIFIC DOCUMENTS FOR USE WITH THIS DOCUMENT.

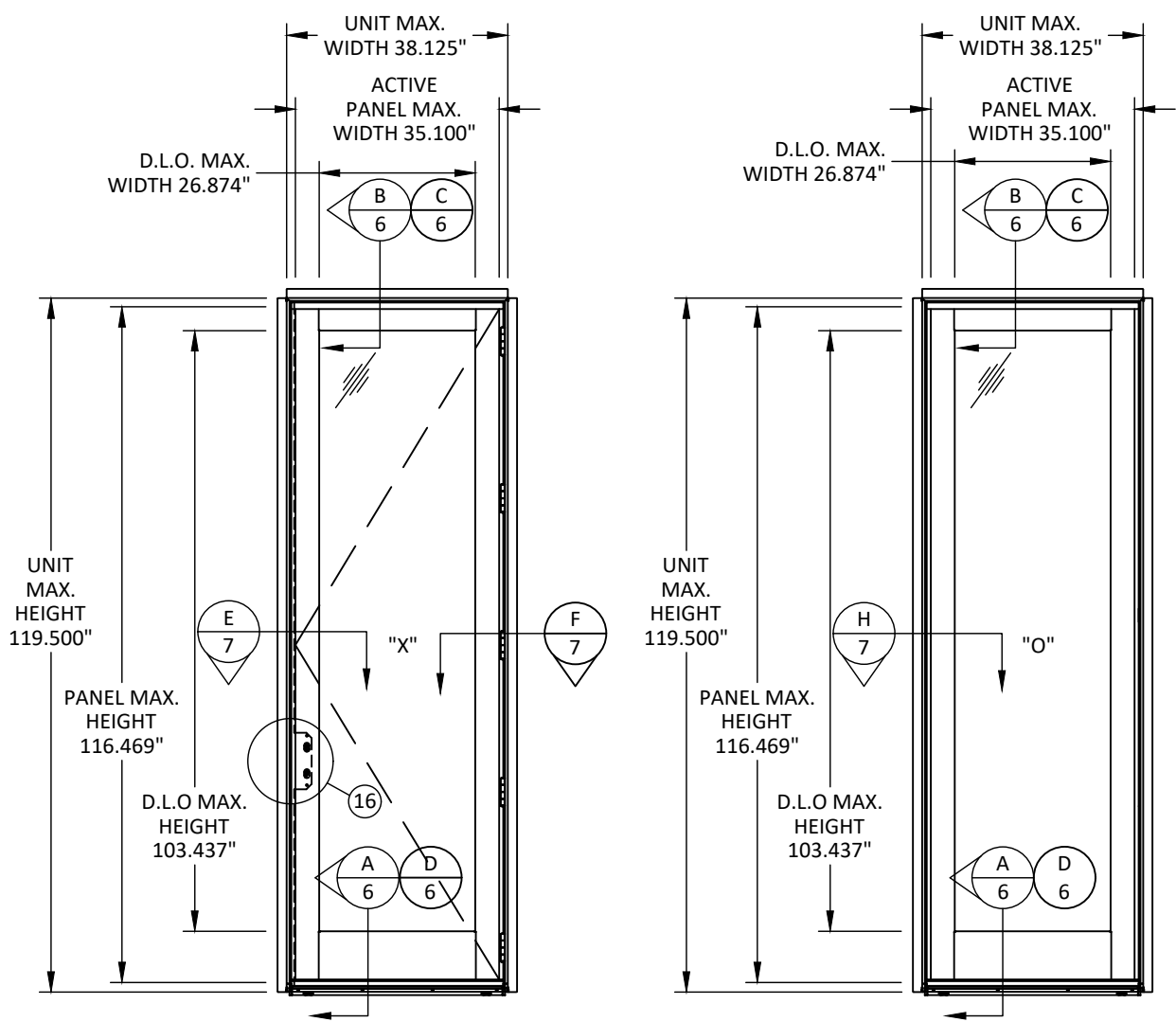


HERMES F. NORERO, P.E.  
TEXAS P.E. No 118471  
BUILDING DROPS, INC  
398 E. DANIA BEACH BLVD. # 338  
DANIA BEACH, FL 33004  
TBPE FIRM No. 13734

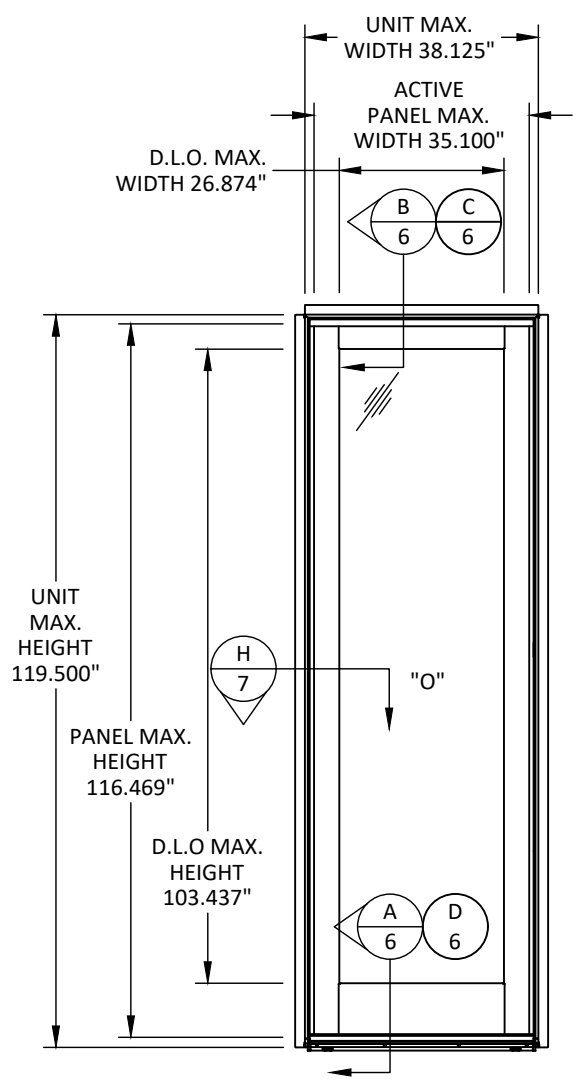
DATE:	08.02.12
DWG. BY:	MSS
CHK. BY:	HFN
SCALE:	NTS
DWG. #:	AWD060

SHEET  
**1**  
OF 9

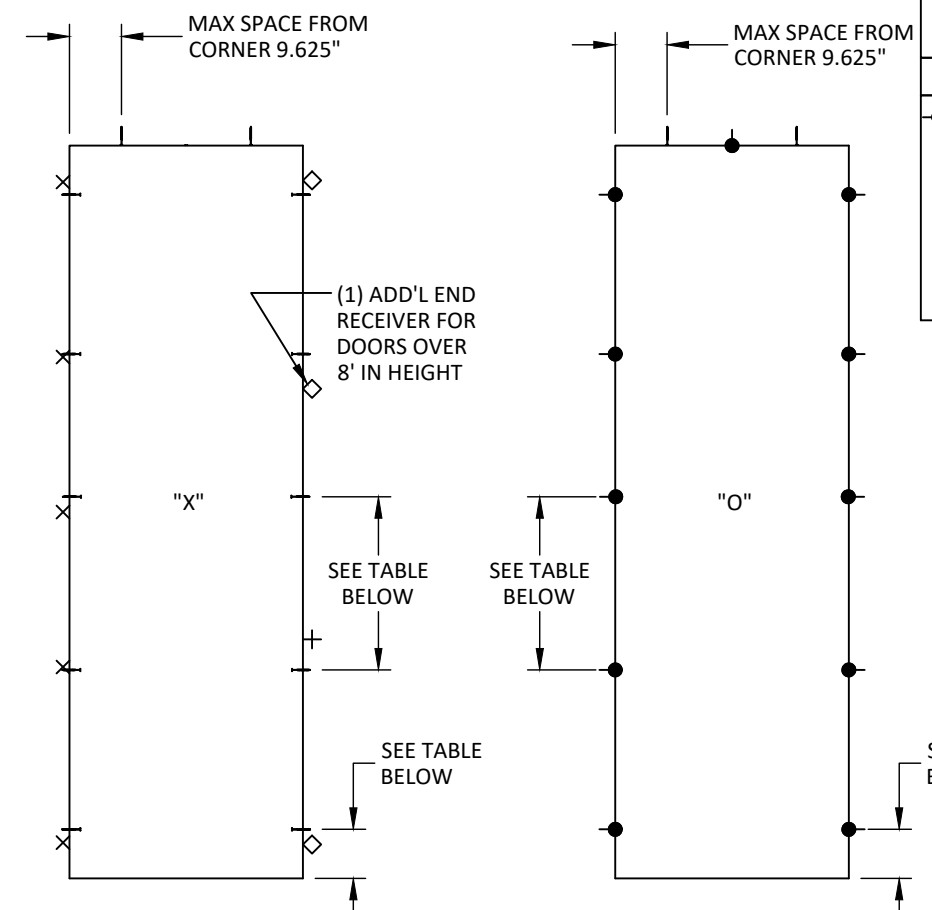
11/22/2021 9:08 AM  
s:\projects\andersen windows\lfd-21-0937 a-series fiberglass clad wood glazed is side hinged doors, impact resistant\dwg\awd060.dwg



**ELEVATION  
OPERABLE**



**ELEVATION  
STATIONARY**



**ANCHOR LAYOUT  
OPERABLE**

**ANCHOR LAYOUT  
STATIONARY**

ACTIVE DOOR LEGEND (X)	
×	= ONE (1) ANCHOR THRU HINGE PLATE
◇	= ANCHORS THRU END RECEIVER - WOOD OR METAL: THREE (3) - CONCRETE/MASONRY: TWO (2)
+	= ANCHORS THRU CENTER RECEIVER - WOOD OR STEEL: FOUR (4) - CONCRETE/MASONRY: TWO (2)
STATIONARY DOOR LEGEND (O)	
●	= FOR CONCRETE/MASONRY INSTALLATIONS, ONLY 1/4" ITW TAPCONS MAY BE USED IN ACCORDANCE WITH EDGE DISTANCE REQUIREMENTS IN TABLE BELOW. FOR WOOD OR METAL INSTALLATIONS, REFER TO APPLICABLE DETAILS AND INSTALLATION NOTES 5 & 6, SHEET 1, RESPECTIVELY

*MIN. EDGE DISTANCES		
ANCHOR	CONCRETE	CMU
1/4" TAPCON	2 1/8"	3 1/2"

\*MIN. EDGE DISTANCES FOR INSTALLATION OF STATIONARY DOORS ONLY

ANCHOR SCHEDULE								
SIZE (IN.)	CONFIGURATION	HEAD			JAMBS			
		MAX. FROM CORNER (IN.)	MAX. O.C. (IN.)	ANCHOR QUANTITY	MAX. FROM CORNER (IN.)	MIN. ANCHOR QUANTITY AT HINGE JAMB	MIN. ANCHOR QUANTITY AT LOCK JAMB	MIN. ANCHOR QUANTITY AT STATIONARY JAMB
38.125 X 119.50*	X or O	9.625	N/A	2	8.0, 34.0 & MIDSPAN	10	13	5
38.125 X 95.50*	X or O	9.625	N/A	2	8.0 & 34.0	8	10	4
38.125 X 82.38*	X or O	9.625	N/A	2	8.0 & MIDSPAN	6	9	3
38.125 X 79.50*	X or O	9.625	N/A	2	8.0 & MIDSPAN	6	9	3

- NOTE:**
- ANCHOR SCHEDULE REFLECTS MINIMUM NUMBER OF ANCHORS REQUIRED, TOTAL QUANTITY MAY VARY DEPENDING ON LEGEND REQUIREMENTS.
  - HINGE REQUIREMENTS - DOORS GREATER THAN 8' IN HEIGHT SHALL UTILIZE 5 HINGES, DOORS GREATER THAN 6'-10 3/8" IN HEIGHT SHALL UTILIZE 4 HINGES, AND DOORS EQUAL TO OR LESS THAN 6'-10 3/8" SHALL UTILIZE 3 HINGES.
  - LOCKING HARDWARE REQUIREMENTS - DOORS UP TO 95.5" USE ANDERSON 3 POINT LOCKING SYSTEM, OVER 95.5" UP TO 119.5" USE 4 POINT LOCKING SYSTEM.
  - FOR INSTALLATION OF HINGES, ITEM#12
    - USE (4) 10-12 X 1 1/2" FLAT HD SCREWS PER HINGE RECEIVER TO DOOR PANEL.
    - USE (2) 10-12 X 1 1/2" FLAT HD SCREWS AND (2) INSTALLATION ANCHORS IN ACCORDANCE WITH SHEET 1, INSTALL. NOTES 4-6, PER HINGE THRU DOOR FRAME INTO SUBSTRATE IN ACCORDANCE WITH LEGEND ABOVE.
  - END RECEIVER & CENTER RECEIVER STRIKE PLATES SHALL BE FASTENED IN ACCORDANCE WITH LEGEND ABOVE. INSTALLATION ANCHORS SHALL BE IN ACCORDANCE WITH SHEET 1, INSTALL. NOTES 4-6, AND LEGEND ABOVE.



100 FOURTH AVE NORTH  
BAYPORT, MN 55003-1096  
PH: (651) 264-5150 FX: (651) 264-5485

TITLE: A-SERIES FRENCHWOOD SIDELITE & TRANSOM DOOR WITH STORMWATCH (IMPACT)  
ELEVATION AND ANCHOR LAYOUT  
PREPARED BY: BUILDING DROPS, INC.  
398 E. DANIA BEACH BLVD., STE. 338  
DANIA BEACH, FL 33004  
PH: (954) 399-8478  
FAX: (954) 744-4738  
WEB: www.buildingdrops.com

REMARKS	BY	DATE
2018 IBC UPDATE	SH	10.06.21

THE INSTALLATION DETAILS DESCRIBED HEREIN ARE GENERIC AND MAY NOT REFLECT ACTUAL CONDITIONS FOR A SPECIFIC SITE. IF SITE CONDITIONS CAUSE INSTALLATION TO DEVIATE FROM THE REQUIREMENTS DETAILED HEREIN, A LICENSED ENGINEER OR ARCHITECT SHALL PREPARE SITE SPECIFIC DOCUMENTS FOR USE WITH THIS DOCUMENT.

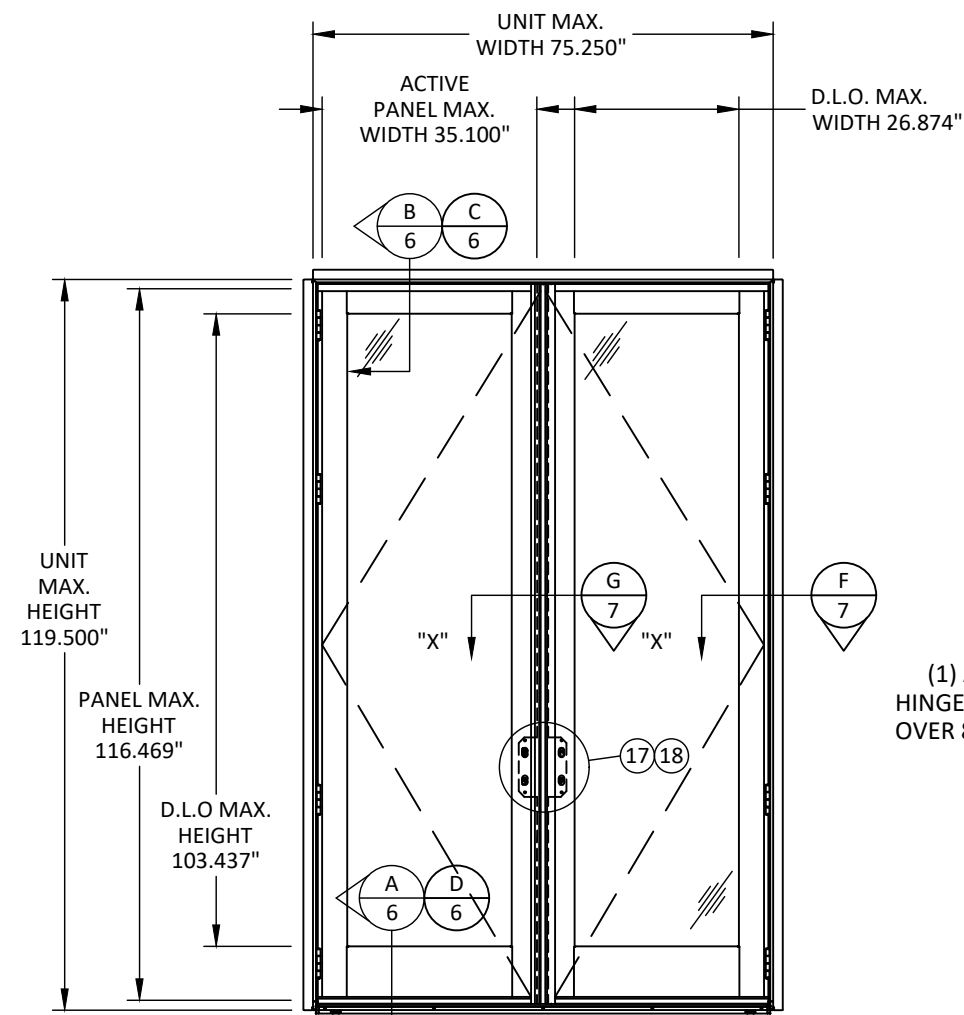


HERMES F. NORERO, P.E.  
TEXAS P.E. No 118471  
BUILDING DROPS, INC  
398 E. DANIA BEACH BLVD. # 338  
DANIA BEACH, FL 33004  
TBPE FIRM No. 13734

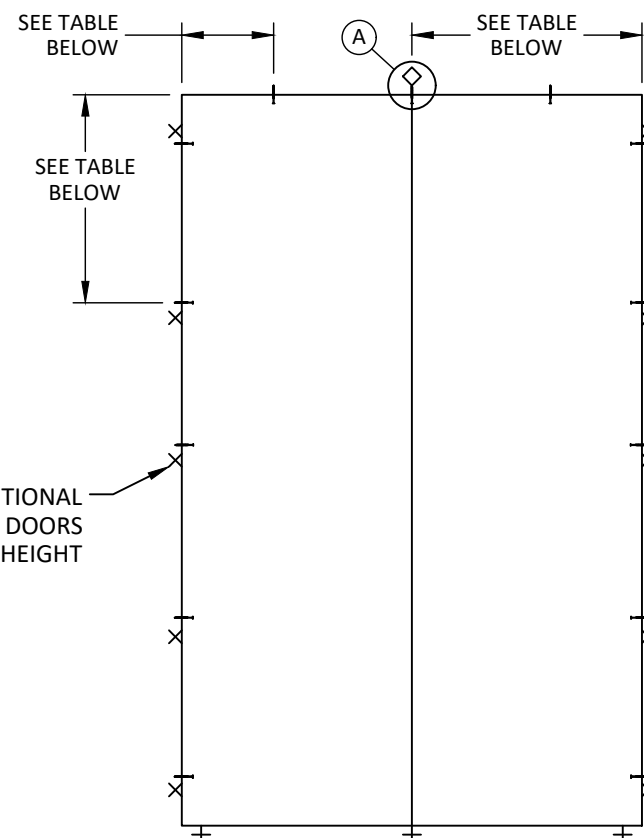
DATE: 08.02.12  
DWG. BY: MSS  
CHK. BY: HFN  
SCALE: NTS  
DWG. #: AWD060

SHEET  
2  
OF 9

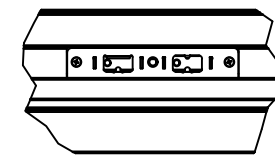
11/22/2021 9:08 AM  
s:\projects\andersen windows\lfd-21-0937 a-series fiberglass clad wood glazed is side hinged doors, impact resistant\dwg\awd060.dwg



**ELEVATION**

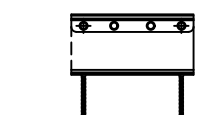
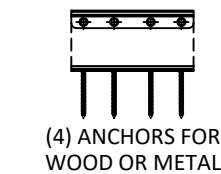


**ANCHOR LAYOUT**



**DETAIL A**  
HEAD JAMB RECEIVER  
SEE LEGEND BELOW FOR QTY

DOOR LEGEND (XX)	
X	= ONE (1) ANCHOR THRU HINGE PLATE
◇	= ANCHORS THRU HEAD RECEIVER SEE DETAIL 'A' ABOVE -WOOD OR METAL: FIVE (5) -CONCRETE/MASONRY: FOUR (4)
+	= ANCHORS THROUGH SILL BRACKET(S), SEE DETAIL 'B' BELOW



(2) ANCHORS FOR CONCRETE/MASONRY

**DETAIL B**

SILL BRACKET  
SEE ABOVE FOR ANCHOR QUANTITIES

ANCHOR SCHEDULE						
SIZE (IN.)	CONFIGURATION	HEAD/SILL			JAMBS	
		MAX. FROM CORNER (IN.)	MAX. O.C. (IN.)	ANCHOR QUANTITY	MAX. FROM CORNER (IN.)	MIN ANCHOR QUANTITY AT HINGE JAMBS
75.25 X 119.50*	XX	17.75	MIDSPAN	3	8.0, 34.0 & MIDSPAN	10
75.25 X 95.50*	XX	17.75	MIDSPAN	3	8.0 & 34.0	8
75.25 X 82.38*	XX	17.75	MIDSPAN	3	8.0 & MIDSPAN	6
75.25 X 79.50*	XX	17.75	MIDSPAN	3	8.0 & MIDSPAN	6

**NOTE:**

- FOR SILL ANCHORAGE SEE LEGEND ABOVE. ALTERNATIVELY, THE CONTINUOUS REMODEL CLIP (ITEM #30) MAY BE UTILIZED WITH FASTENERS FROM CLIP TO SUBSTRATE 3" FROM CORNERS & 6 7/8" MAX. O.C. PLEASE REFER TO DETAIL A/6 AND D/6 FOR REQUIREMENTS OF INSTALLATION.
- ANCHOR SCHEDULE REFLECTS MINIMUM NUMBER OF ANCHORS REQUIRED, TOTAL QUANTITY MAY VARY DEPENDING ON LEGEND REQUIREMENTS.
- LOCKING HARDWARE REQUIREMENTS - DOORS UP TO 95.5" USE ANDERSON 3 POINT LOCKING SYSTEM, OVER 95.5" UP TO 119.5" USE 4 POINT LOCKING SYSTEM.
- HINGE REQUIREMENTS - DOORS GREATER THAN 8' IN HEIGHT SHALL UTILIZE 5 HINGES, DOORS GREATER THAN 6'-10 3/8" IN HEIGHT SHALL UTILIZE 4 HINGES, AND DOORS EQUAL TO OR LESS THAN 6'-10 3/8" SHALL UTILIZE 3 HINGES.
- RECEIVER REQUIREMENTS - ALL DOORS UTILIZE CENTER RECEIVER BASKET, DOORS EQUAL TO OR LESS THAN 8' TALL SHALL UTILIZE 2 END RECEIVERS (TOP & BOTTOM).
- FOR INSTALLATION OF HINGES, ITEM#12
  - USE (4) 10-12 X 1 1/2" FLAT HD SCREWS PER HINGE RECEIVER TO DOOR PANEL.
  - USE (2) 10-12 X 1 1/2" FLAT HD SCREWS AND (2) INSTALLATION ANCHORS IN ACCORDANCE WITH SHEET 1, INSTALL. NOTES 4-6, PER HINGE THRU DOOR FRAME INTO SUBSTRATE IN ACCORDANCE WITH LEGEND ABOVE.
- FOR INSTALLATION OF HEAD RECEIVER, DETAIL A ABOVE, SEE LEGEND ABOVE FOR QUANTITY REQUIREMENTS. INSTALLATION ANCHORS SHALL BE IN ACCORDANCE WITH SHEET 1, INSTALL. NOTES 4-6, AND LEGEND ABOVE. LEFTOVER HOLES SHALL UTILIZE 10-12 X 1" PH SCREWS TO DOOR FRAME.
- ASTRAGALS SHALL BE ATTACHED THROUGH EACH MULTI-POINT STRIKE & MULTI-POINT LATCH LOCATION (ITEM #16 & #17) WITH (2) 10-12 X 3 1/2" PH SCREWS PER STRIKE OR FACE PLATE.



100 FOURTH AVE NORTH  
BAYPORT, MN 55003-1096  
PH: (651) 264-5150 FX: (651) 264-5485

TITLE: A-SERIES FRENCHWOOD SIDELITE & TRANSOM DOOR WITH STORMWATCH (IMPACT)

ELEVATION AND ANCHOR LAYOUT

PREPARED BY: **BUILDING DROPS, INC.**  
398 E. DANIA BEACH BLVD., STE. 338  
DANIA BEACH, FL 33004  
PH: (954) 399-8478  
FAX: (954) 474-4738  
WEB: www.buildingdrops.com

REMARKS	BY	DATE
2018 IBC UPDATE	SH	10.06.21

THE INSTALLATION DETAILS DESCRIBED HEREIN ARE GENERIC AND MAY NOT REFLECT ACTUAL CONDITIONS FOR A SPECIFIC SITE. IF SITE CONDITIONS CAUSE INSTALLATION TO DEVIATE FROM THE REQUIREMENTS DETAILED HEREIN, A LICENSED ENGINEER OR ARCHITECT SHALL PREPARE SITE SPECIFIC DOCUMENTS FOR USE WITH THIS DOCUMENT.



HERMES F. NORERO, P.E.  
TEXAS P.E. No 118471  
BUILDING DROPS, INC  
398 E. DANIA BEACH BLVD. # 338  
DANIA BEACH, FL 33004  
TBPE FIRM No. 13734

DATE: **08.02.12**

DWG. BY: **MSS**      CHK. BY: **HFN**

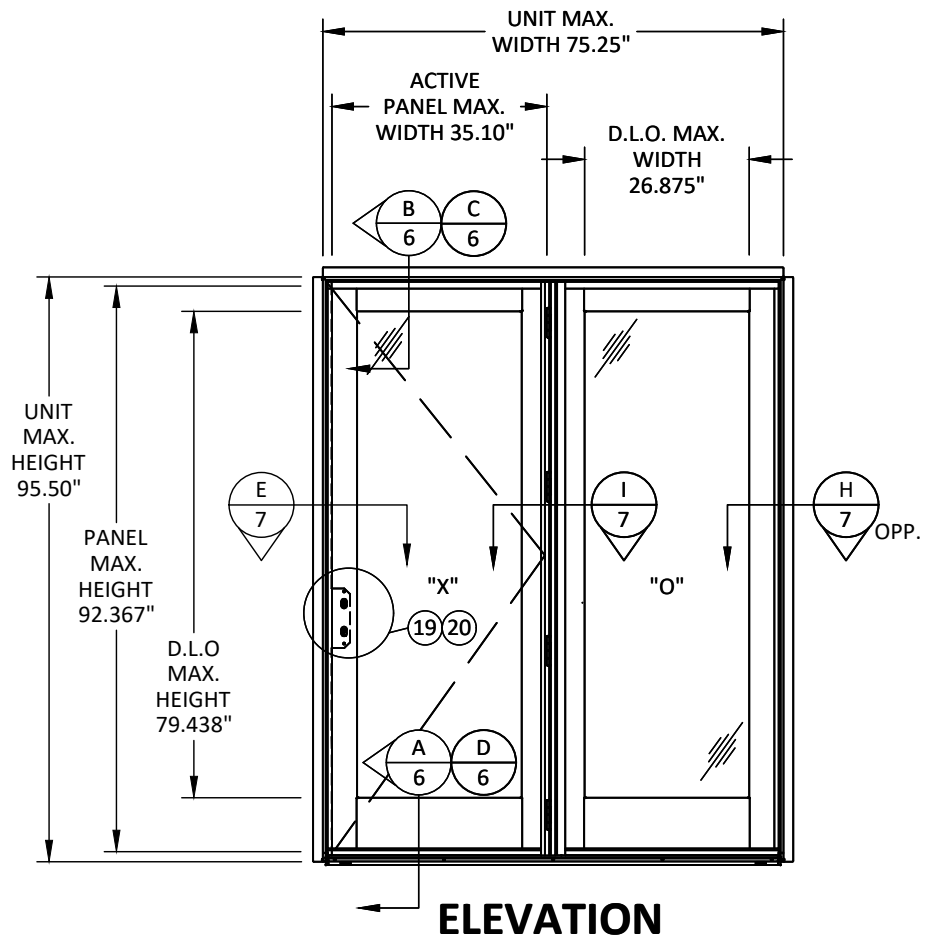
SCALE: **NTS**

DWG. #: **AWD060**

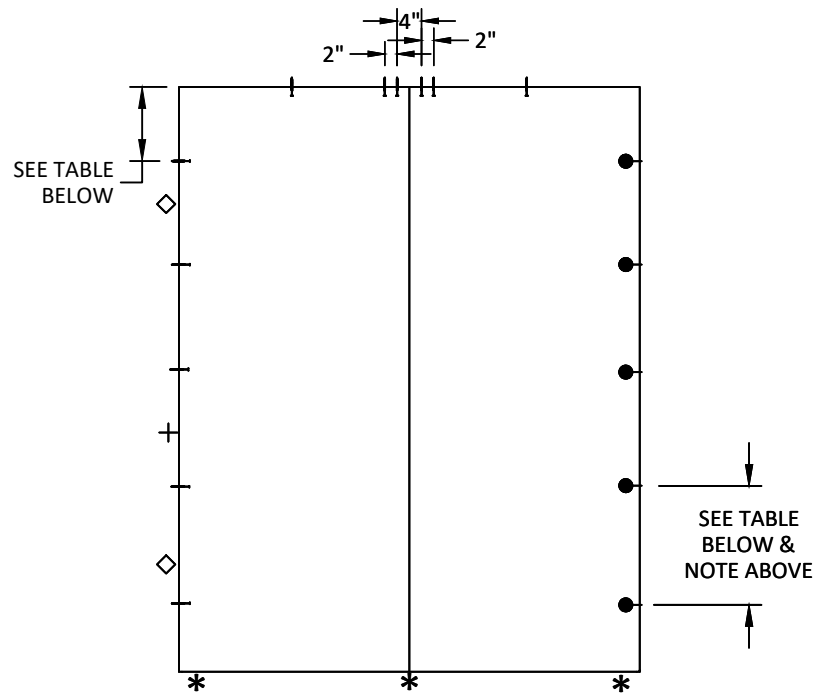
SHEET

**3**

11/22/2021 9:08 AM  
s:\projects\andersen windows\lfdi-21-0937 a-series fiberglass clad wood glazed is side hinged doors, impact resistant\dwg\awd060.dwg

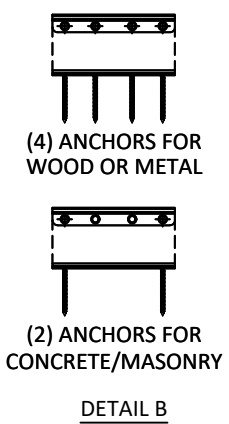


**ELEVATION**



**ANCHOR LAYOUT**

DOOR LEGEND (OX)	
◇	= ONE (1) ANCHORS THROUGH KEEPER
+	= TWO (2) ANCHORS THRU LATCH BOLT
*	= ANCHORS THROUGH SILL BRACKET(S), SEE DETAIL 'B' BELOW



**DETAIL B**  
SILL BRACKET  
SEE ABOVE FOR ANCHOR QUANTITIES

ANCHOR SCHEDULE											
SIZE (IN)	CONFIGURATION	HEAD			SILL			JAMBS			MIN. THROUGH LOCK STRIKE ANCHOR QUANTITY PER JAMB
		MAX. FROM CORNER (IN)	MAX. O.C. (IN)	ANCHOR QUANTITY	MAX. FROM CORNER (IN)	MAX. O.C. (IN)	ANCHOR QUANTITY	MAX. FROM CORNER (IN)	MAX. O.C. (IN)	MIN. THROUGH JAMB ANCHOR QUANTITY	
75.25 X 95.50	XO OR OX	19" (AT CENTER OF EACH PANEL)	SEE ABOVE	6	4.0	33.625	3	10.5	19.0	5	5
75.25 X 82.38	XO OR OX	19" (AT CENTER OF EACH PANEL)	SEE ABOVE	6	4.0	33.625	3	10.5	21.0	4	4
75.25 X 79.50	XO OR OX	19" (AT CENTER OF EACH PANEL)	SEE ABOVE	6	4.0	33.625	3	10.5	21.0	4	4

- NOTES:**
- FOR SILL ANCHORAGE SEE LEGEND ABOVE. PLEASE REFER TO DETAIL A/6 AND D/6 FOR REQUIREMENTS OF INSTALLATION.
  - ANCHOR SCHEDULE REFLECTS MINIMUM NUMBER OF ANCHORS REQUIRED, TOTAL QUANTITY MAY VARY DEPENDING ON LEGEND REQUIREMENTS.
  - HINGE REQUIREMENTS - DOORS GREATER THAN 8' IN HEIGHT SHALL UTILIZE 5 HINGES, DOORS GREATER THAN 6'-10 3/8" IN HEIGHT SHALL UTILIZE 4 HINGES, AND DOORS EQUAL TO OR LESS THAN 6'-10 3/8" SHALL UTILIZE 3 HINGES.
  - LOCKING HARDWARE REQUIREMENTS - DOORS UP TO 95.5" USE ANDERSON 3 POINT LOCKING SYSTEM.
  - RECEIVER REQUIREMENTS - ALL DOORS UTILIZE CENTER RECEIVER BASKET, DOORS EQUAL TO OR LESS THAN 8' TALL SHALL UTILIZE 2 END RECEIVERS (TOP & BOTTOM).
  - FOR INSTALLATION OF HINGES, ITEM#12
    - USE (4) 10-12 X 1 1/2" FLAT HD SCREWS PER HINGE RECEIVER TO DOOR PANEL.
    - USE (4) 10-12 X 1 1/2" FLAT HD SCREWS PER HINGE TO FRAME.
  - FOR INSTALLATION OF HEAD & SILL RECEIVER SEE LEGEND ABOVE FOR QUANTITY REQUIREMENTS. INSTALLATION ANCHORS SHALL BE IN ACCORDANCE WITH SHEET 1, INSTALL. NOTES 4-6, AND LEGEND ABOVE. LEFTOVER HOLES SHALL UTILIZE 10-12 X 1" PH SCREWS TO DOOR FRAME.

100 FOURTH AVE NORTH  
BAYPORT, MN 55003-1096  
PH: (651) 264-5150 FX: (651) 264-5485

**TITLE:** A-SERIES FRENCHWOOD SIDELITE & TRANSOM DOOR WITH STORMWATCH (IMPACT)  
ELEVATION AND ANCHOR LAYOUT

**PREPARED BY:** BUILDING DROPS, INC.  
398 E. DANIA BEACH BLVD., STE. 338  
DANIA BEACH, FL 33004  
PH: (954) 399-8478  
FAX: (954) 744-4738  
WEB: www.buildingdrops.com

REMARKS	BY	DATE
2018 IBC UPDATE	SH	10.06.21

THE INSTALLATION DETAILS DESCRIBED HEREIN ARE GENERIC AND MAY NOT REFLECT ACTUAL CONDITIONS FOR A SPECIFIC SITE. IF SITE CONDITIONS CAUSE INSTALLATION TO DEVIATE FROM THE REQUIREMENTS DETAILED HEREIN, A LICENSED ENGINEER OR ARCHITECT SHALL PREPARE SITE SPECIFIC DOCUMENTS FOR USE WITH THIS DOCUMENT.

HERMES F. NORERO, P.E.  
TEXAS P.E. No 118471  
BUILDING DROPS, INC  
398 E. DANIA BEACH BLVD. # 338  
DANIA BEACH, FL 33004  
TBPE FIRM No. 13734

DATE: **08.02.12**

DWG. BY: **MSS**      CHK. BY: **HFN**

SCALE: **NTS**

DWG. #: **AWD060**

SHEET

**4**

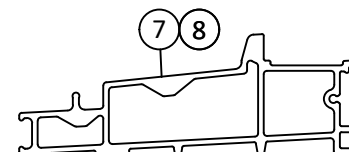
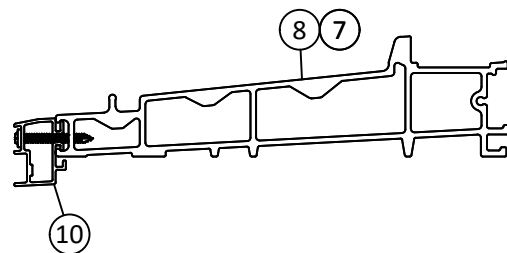
11/22/2021 9:09 AM  
s:\projects\andersen windows\lfdi-21-0937 a-series fiberglass clad wood glazed is side hinged doors, impact resistant\dwg\awd060.dwg

**A-SERIES INSWING DOOR UNITS WITH DROP-NOSE SILL (ITEM 10)**

CONFIGURATION	HEIGHT (IN.)	WIDTH (IN.)	DESIGN PRESSURE (PSF)			
			G1		G2	
			POS.	NEG.	POS.	NEG.
XX	79.50	75.25	65.0	80.0	-	-
XX	82.38	75.25	65.0	80.0	-	-
XX	95.50	63.25	65.0	80.0	-	-
XX	95.50	75.25	-	-	65.0	70.0
XX	101.50	75.25	-	-	62.8	77.6
XX	107.50	75.25	-	-	60.2	75.2
XX	113.50	75.25	-	-	53.8	68.8
XX	119.50	75.250	-	-	50.0	65.0
XO/OX	79.50	75.250	65.0	80.0	-	-
XO/OX	82.38	75.250	65.0	80.0	-	-
XO/OX	95.50	63.250	65.0	70.0	65.0	70.0
XO/OX	95.50	75.250	-	-	65.0	70.0
X or O	79.50	38.125	65.0	80.0	-	-
X or O	82.38	38.125	65.0	80.0	-	-
X or O	95.50	32.125	65.0	70.0	-	-
X or O	95.50	38.125	-	-	65.0	80.0
X or O	101.50	38.125	-	-	65.0	77.5
X or O	107.50	38.125	-	-	65.0	75.0
X or O	113.50	38.125	-	-	65.0	72.5
X or O	119.50	38.125	-	-	65.0	70.0

**A-SERIES INSWING DOOR UNITS WITHOUT DROP-NOSE SILL (ITEM 10)**

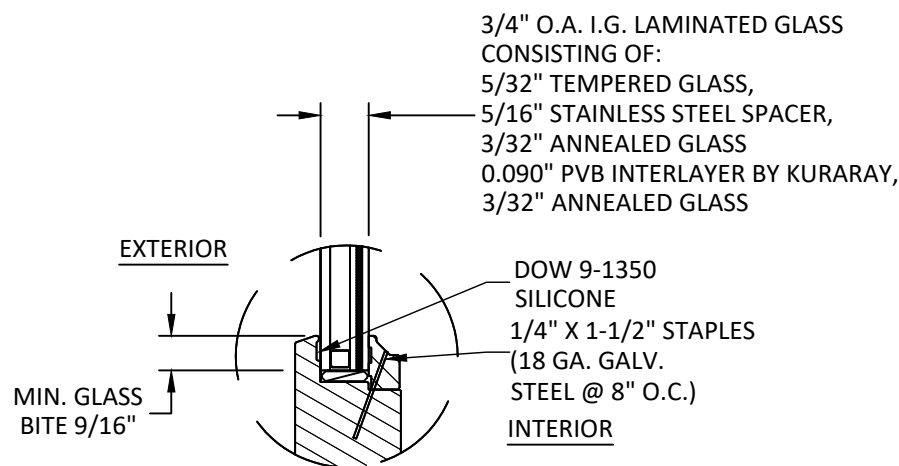
CONFIGURATION	HEIGHT (IN.)	WIDTH (IN.)	DESIGN PRESSURE (PSF)			
			G1		G2	
			POS.	NEG.	POS.	NEG.
XX	79.50	75.25	45.0	80.0	-	-
XX	82.38	75.25	45.0	80.0	-	-
XX	95.50	63.25	45.0	80.0	-	-
XX	95.50	75.25	-	-	45.0	70.0
XX	101.50	75.25	-	-	45.0	77.6
XX	107.50	75.25	-	-	45.0	75.2
XX	113.50	75.25	-	-	45.0	68.8
XX	119.50	75.250	-	-	50.0	65.0
XO/OX	79.50	75.250	45.0	80.0	-	-
XO/OX	82.38	75.250	45.0	80.0	-	-
XO/OX	95.50	63.250	45.0	70.0	45.0	70.0
XO/OX	95.50	75.250	-	-	45.0	70.0
X or O	79.50	38.125	45.0	80.0	-	-
X or O	82.38	38.125	45.0	80.0	-	-
X or O	95.50	32.125	45.0	80.0	-	-
X or O	95.50	38.125	-	-	45.0	70.0
X or O	101.50	38.125	-	-	45.0	77.5
X or O	107.50	38.125	-	-	45.0	75.0
X or O	113.50	38.125	-	-	45.0	72.5
X or O	119.50	38.125	-	-	45.0	70.0



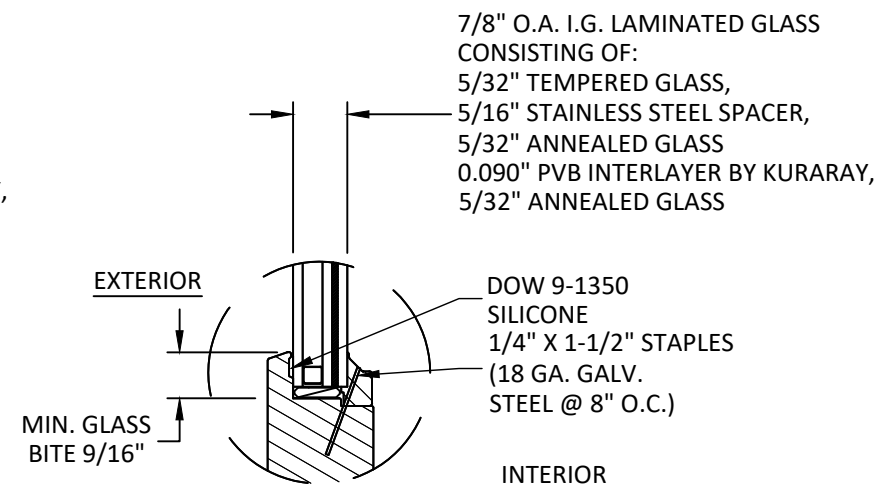
NOTE: ALL PRESSURES MEET WATER INFILTRATION REQUIREMENTS

**NOTE:**

- ALL GLAZING MEETS SAFETY GLAZING REQUIREMENTS AS PER CH 24 OF THE 2018 IBC.



**GLAZING DETAIL 1**



**GLAZING DETAIL 2**



100 FOURTH AVE NORTH  
 BAYPORT, MN 55003-1096  
 PH: (651) 264-5150 FX: (651) 264-5485

TITLE: A-SERIES FRENCHWOOD SIDELITE & TRANSOM DOOR WITH STORMWATCH (IMPACT)

PRESSURE TABLES AND GLAZING DETAIL

PREPARED BY: BUILDING DROPS, INC.  
 398 E. DANIA BEACH BLVD., STE. 338  
 DANIA BEACH, FL 33004  
 PH: (954) 399-8478  
 FAX: (954) 744-4738  
 WEB: www.buildingdrops.com



REMARKS	BY	DATE
2018 IBC UPDATE	SH	10.06.21

THE INSTALLATION DETAILS DESCRIBED HEREIN ARE GENERIC AND MAY NOT REFLECT ACTUAL CONDITIONS FOR A SPECIFIC SITE. IF SITE CONDITIONS CAUSE INSTALLATION TO DEVIATE FROM THE REQUIREMENTS DETAILED HEREIN, A LICENSED ENGINEER OR ARCHITECT SHALL PREPARE SITE SPECIFIC DOCUMENTS FOR USE WITH THIS DOCUMENT.



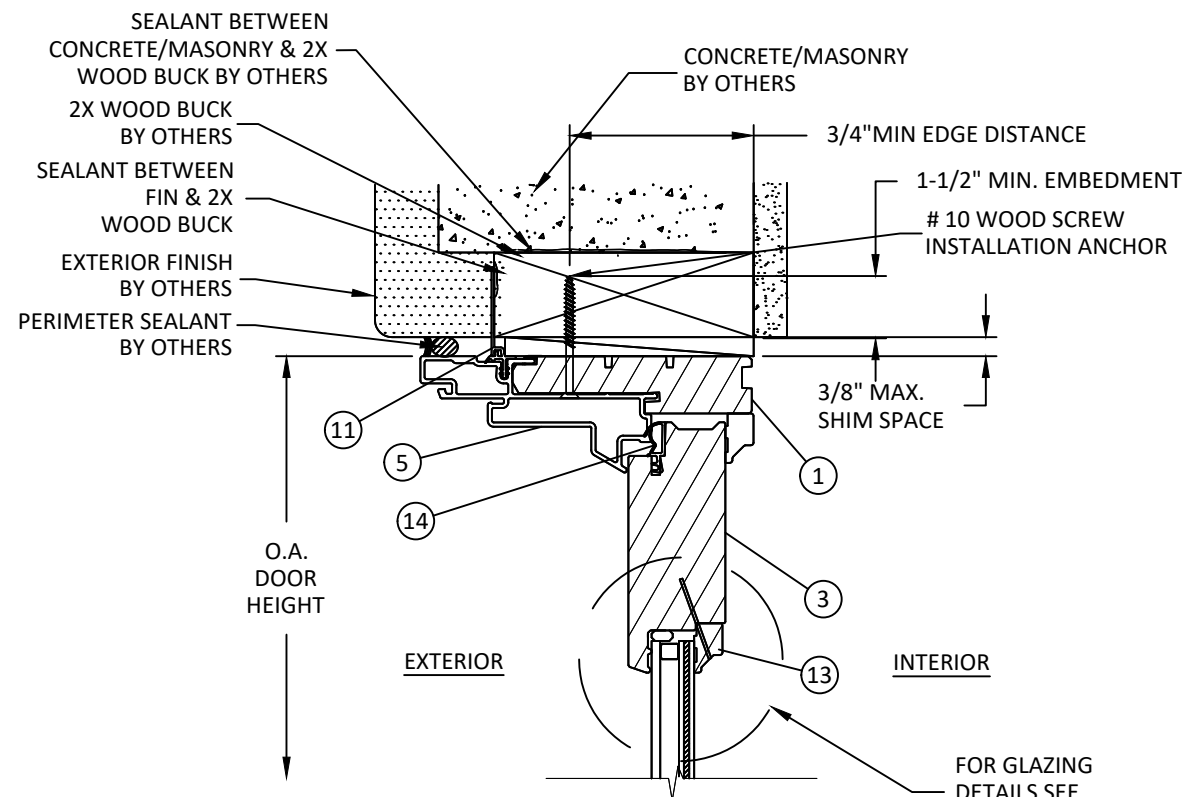
HERMES F. NORERO, P.E.  
 TEXAS P.E. No 118471  
 BUILDING DROPS, INC  
 398 E. DANIA BEACH BLVD. # 338  
 DANIA BEACH, FL 33004  
 TBPE FIRM No. 13734

DATE:	08.02.12	
DWG. BY:	MSS	CHK. BY: HFN
SCALE:	NTS	
DWG. #:	AWD060	

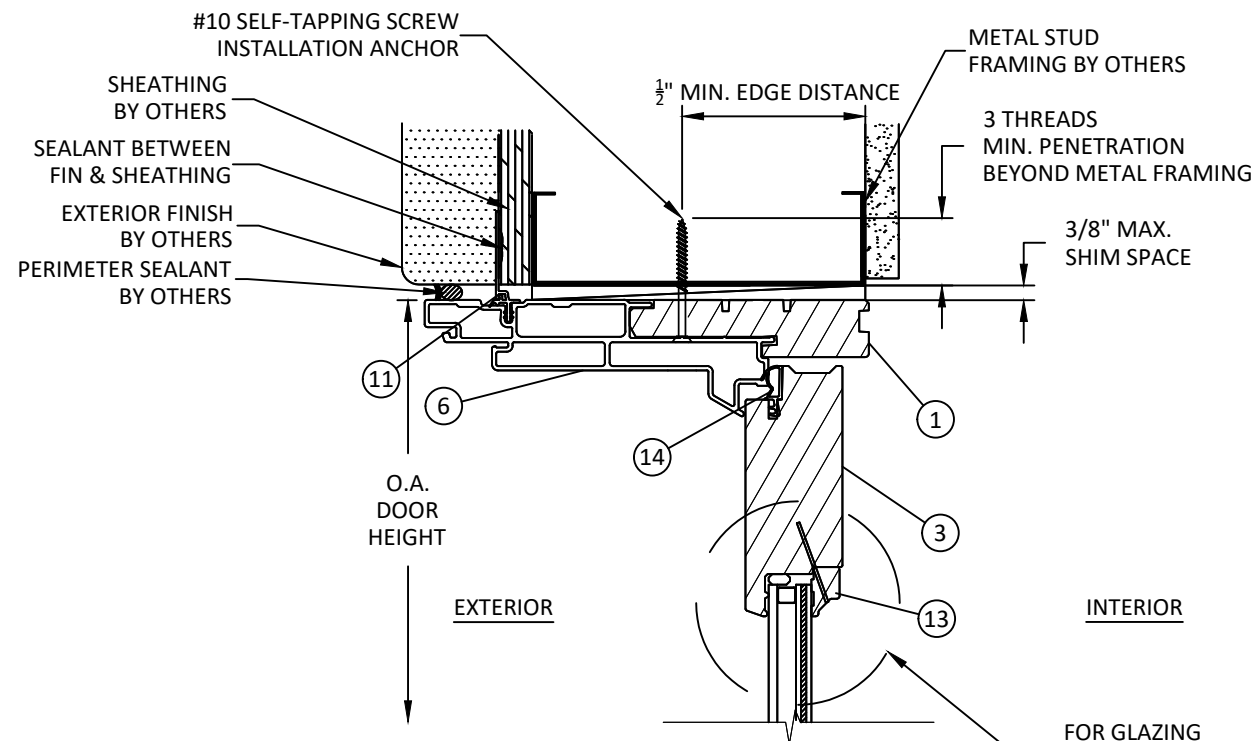
SHEET

5

11/22/2021 9:09 AM  
s:\projects\andersen windows\21-0937 a-series fiberglass clad wood glazed is side hinged doors, impact resistant\dwg\awd060.dwg



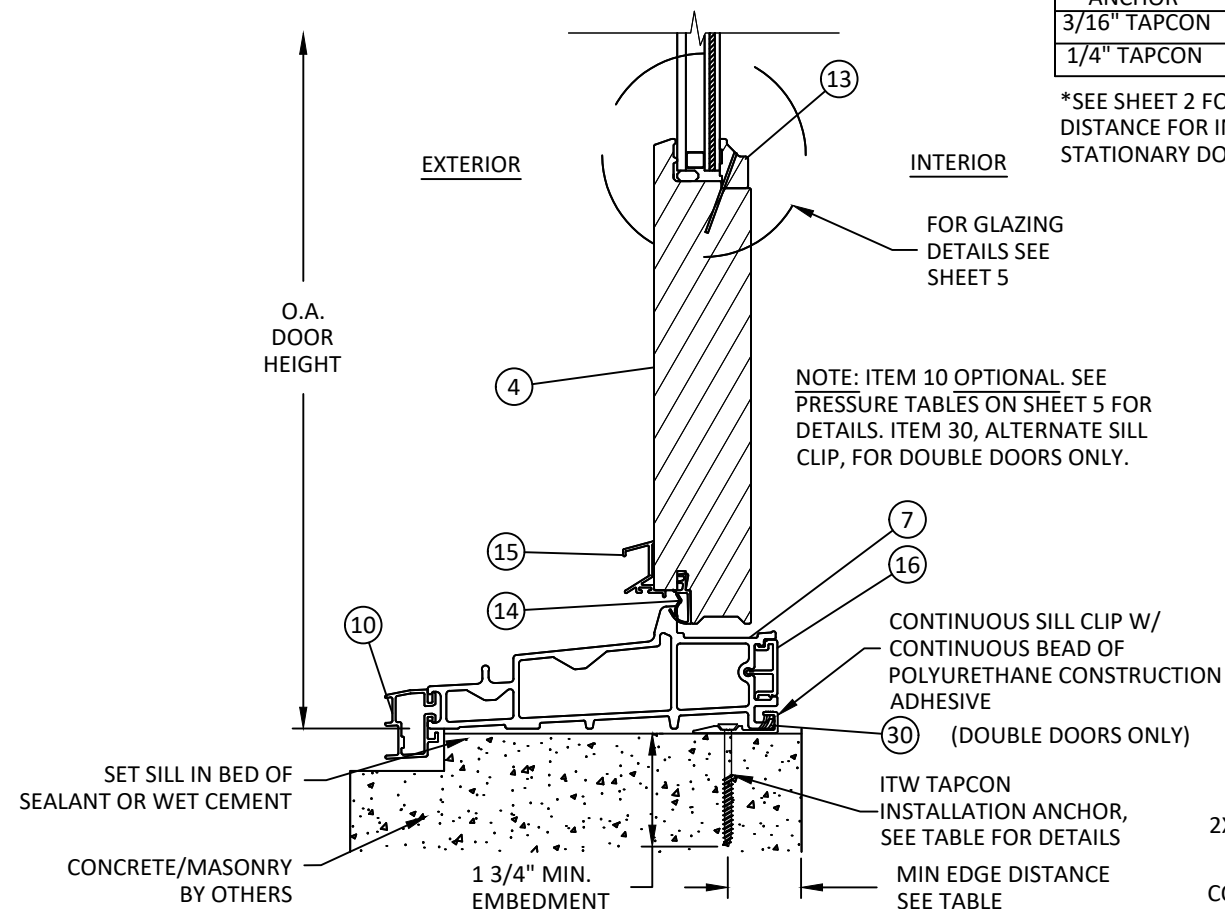
**B**  
**6** VERTICAL SECTION  
HEAD - 2X WOOD FRAME



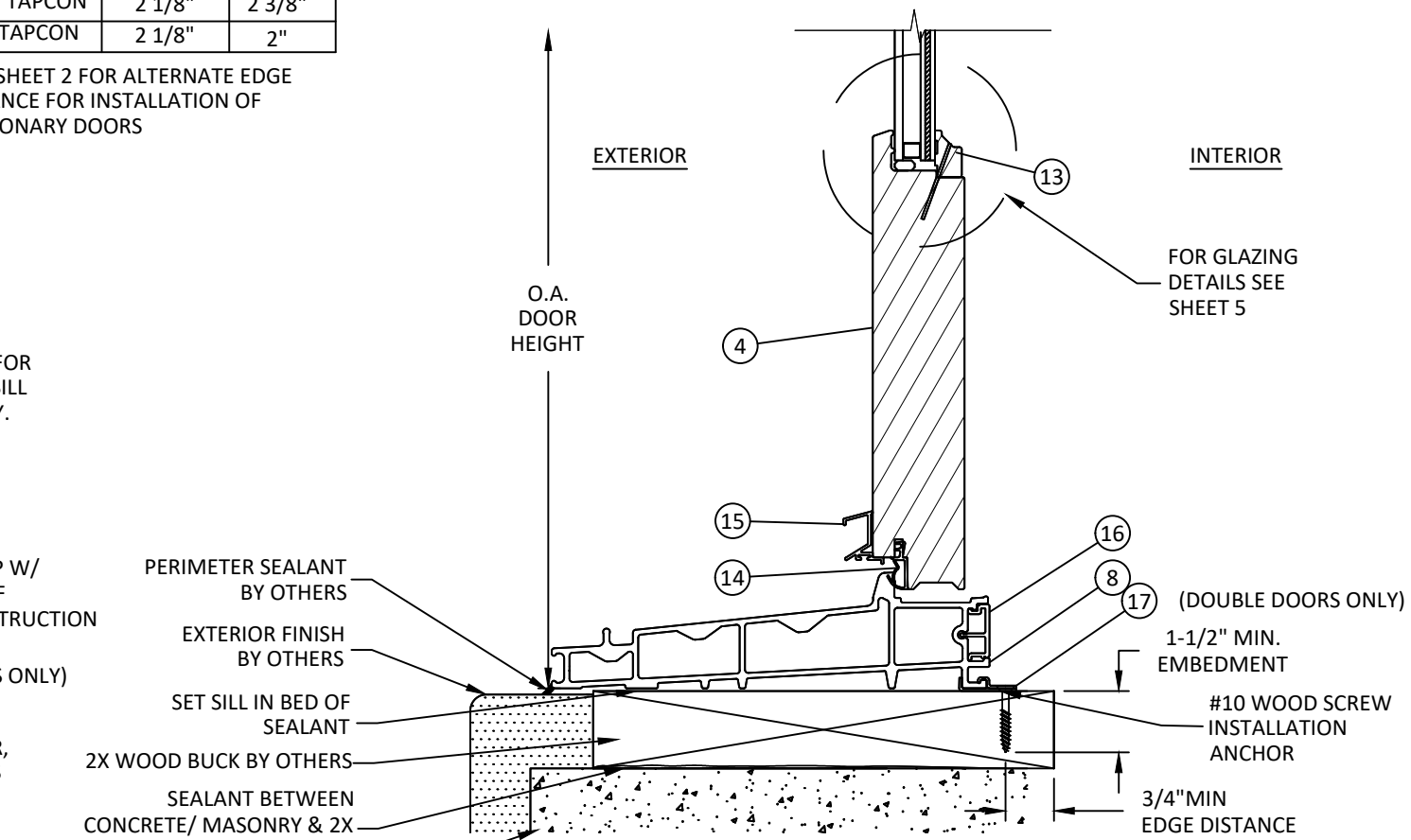
**C**  
**6** VERTICAL SECTION  
HEAD - METAL STUD FRAME

*MIN. EDGE DISTANCES		
ANCHOR	CONCRETE	CMU
3/16" TAPCON	2 1/8"	2 3/8"
1/4" TAPCON	2 1/8"	2"

\*SEE SHEET 2 FOR ALTERNATE EDGE DISTANCE FOR INSTALLATION OF STATIONARY DOORS



**A**  
**6** VERTICAL SECTION  
SILL - CONCRETE



**D**  
**6** VERTICAL SECTION  
SILL - 2X WOOD FRAME



100 FOURTH AVE NORTH  
BAYPORT, MN 55003-1096  
PH: (651) 264-5150 FX: (651) 264-5485

TITLE: A-SERIES FRENCHWOOD SIDELITE & TRANSOM DOOR WITH STORMWATCH (IMPACT)

VERTICAL SECTIONS

PREPARED BY: **BD** BUILDING DROPS  
BUILDING DROPS, INC.  
398 E. DANIA BEACH BLVD., STE. 338  
DANIA BEACH, FL 33004  
PH: (954) 399-8478  
FAX: (954) 744-4738  
WEB: www.buildingdrops.com

REMARKS	BY	DATE
2018 IBC UPDATE	SH	10.06.21

THE INSTALLATION DETAILS DESCRIBED HEREIN ARE GENERIC AND MAY NOT REFLECT ACTUAL CONDITIONS FOR A SPECIFIC SITE. IF SITE CONDITIONS CAUSE INSTALLATION TO DEVIATE FROM THE REQUIREMENTS DETAILED HEREIN, A LICENSED ENGINEER OR ARCHITECT SHALL PREPARE SITE SPECIFIC DOCUMENTS FOR USE WITH THIS DOCUMENT.



HERMES F. NORERO, P.E.  
TEXAS P.E. No 118471  
BUILDING DROPS, INC  
398 E. DANIA BEACH BLVD. # 338  
DANIA BEACH, FL 33004  
TBPE FIRM No. 13734

DATE: 08.02.12

DWG. BY: MSS  
CHK. BY: HFN

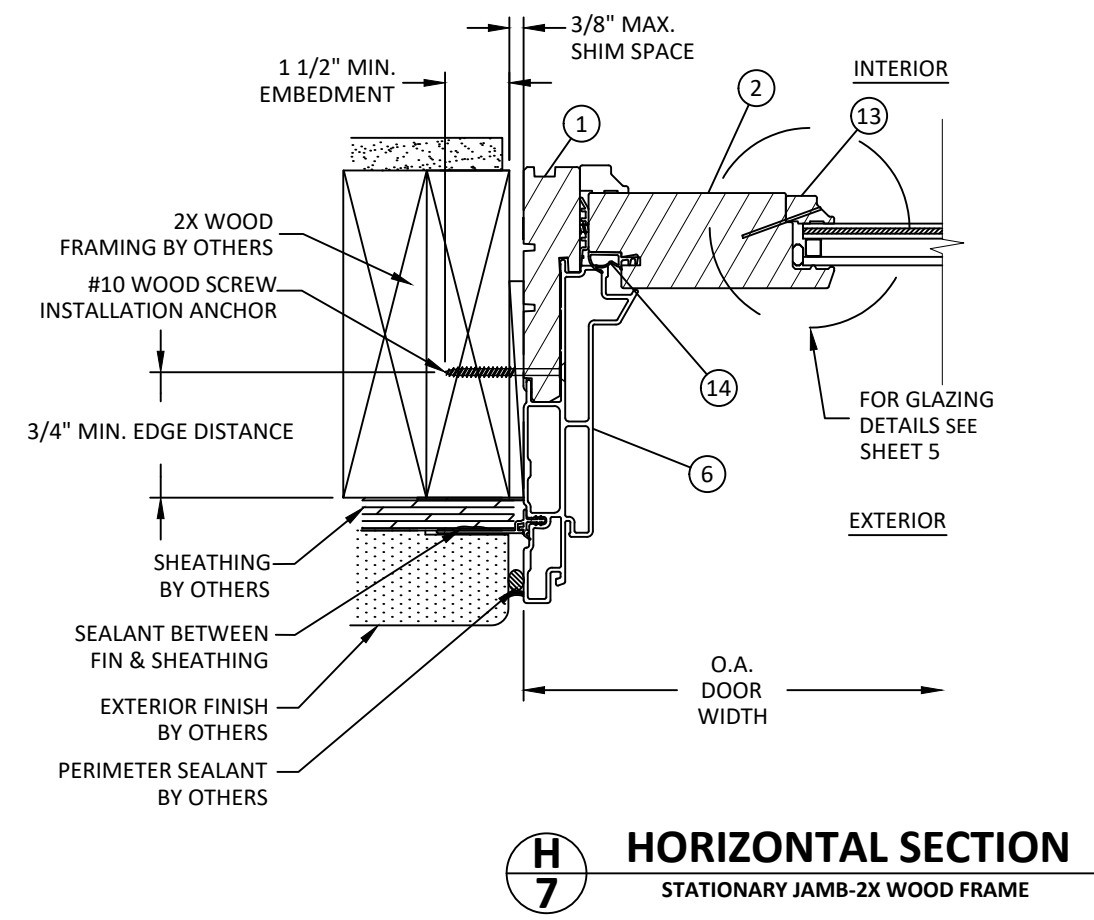
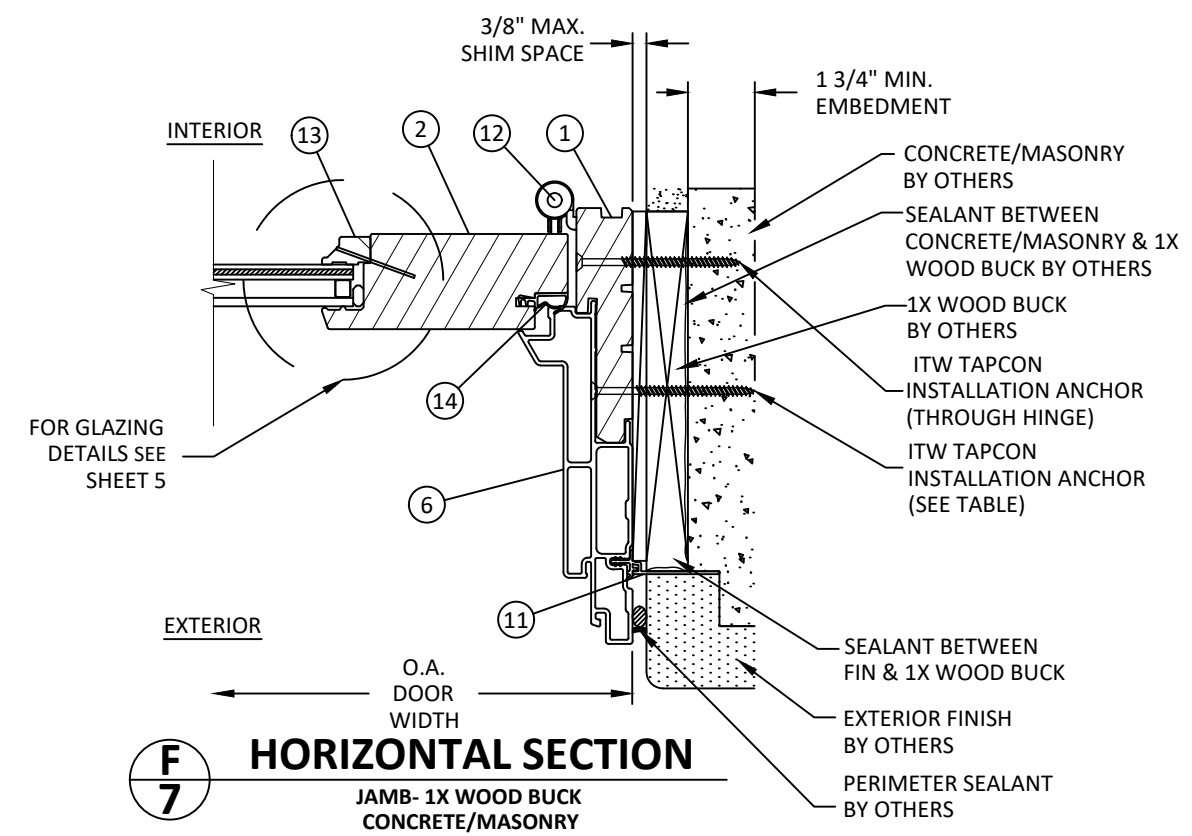
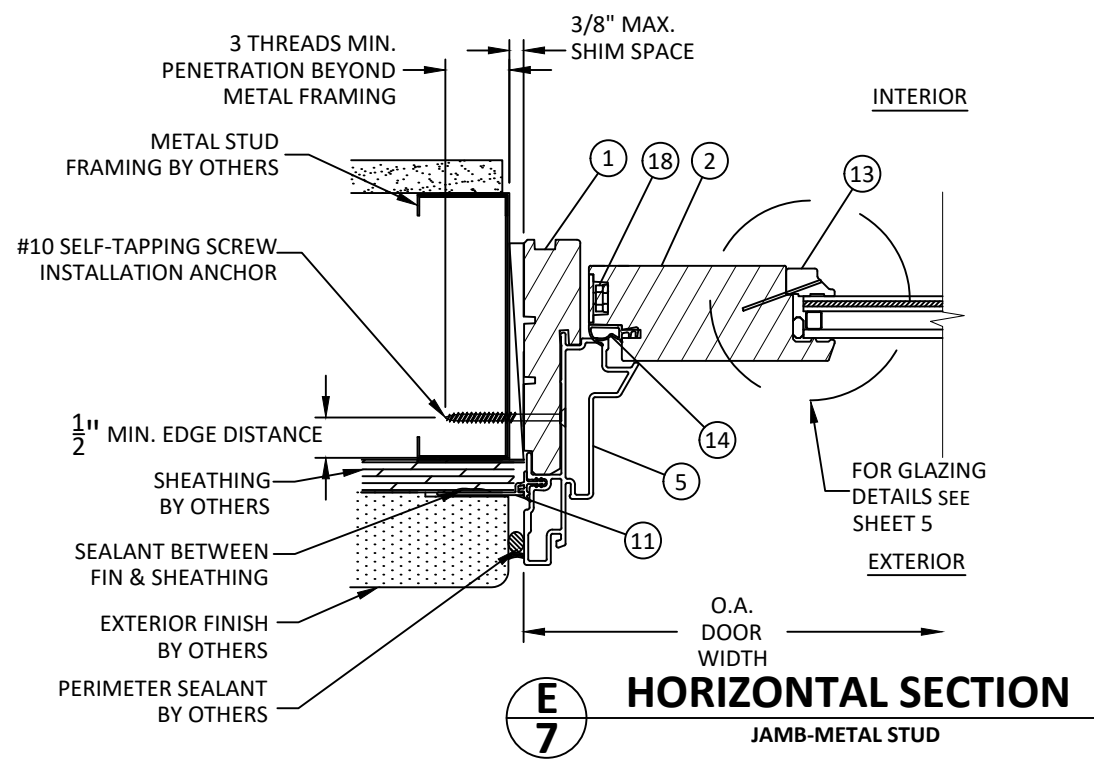
SCALE: NTS

DWG. #: AWD060

SHEET

6

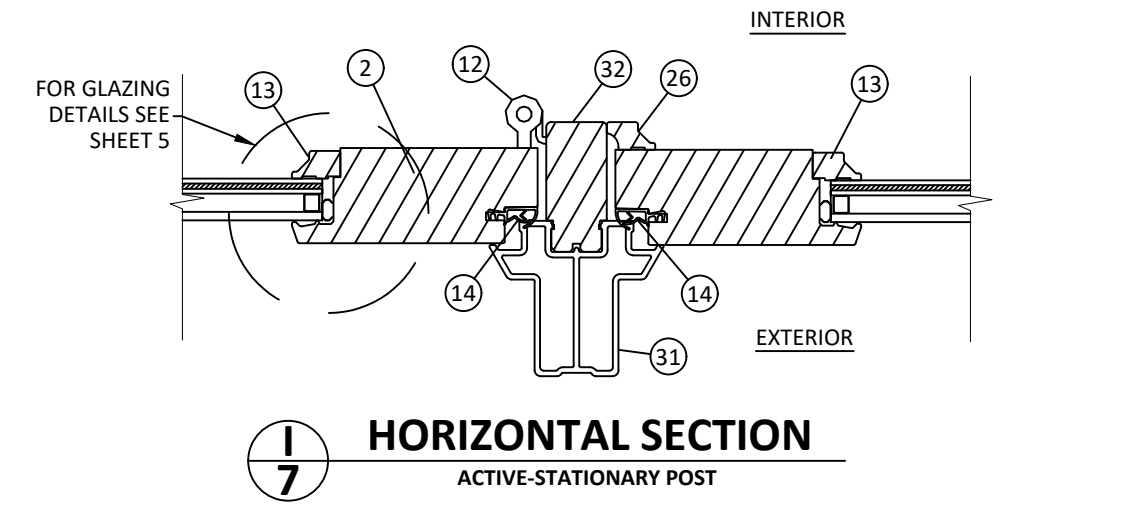
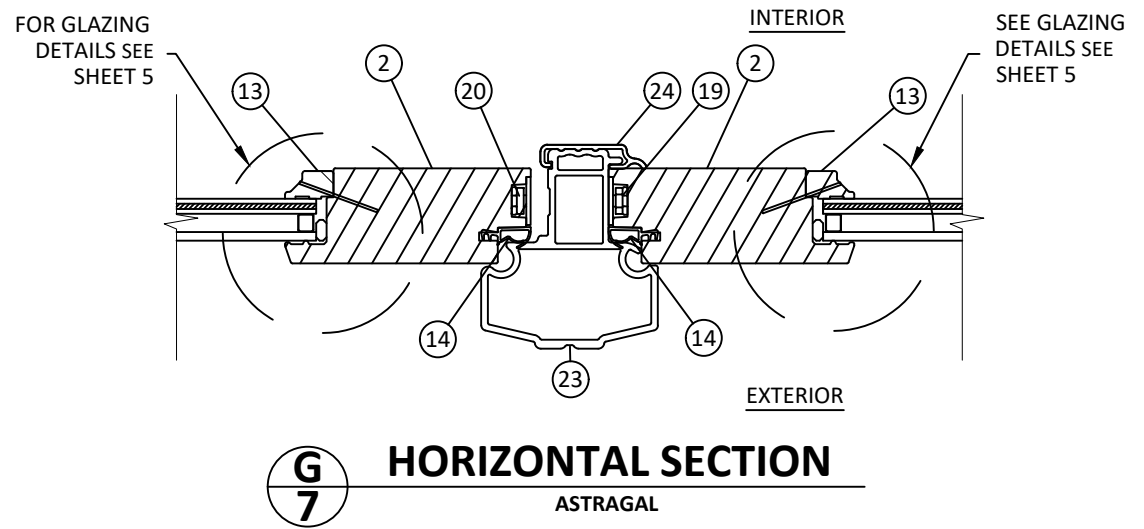
11/22/2021 9:09 AM  
s:\projects\andersen windows\lfdi-21-0937 a-series fiberglass clad wood glazed is side hinged doors, impact resistant\dwg\awd060.dwg



**\*MIN. EDGE DISTANCES**

ANCHOR	CONCRETE	CMU
3/16" TAPCON	2 1/8"	2 3/8"
1/4" TAPCON	2 1/8"	2"

\*SEE SHEET 2 FOR ALTERNATE EDGE DISTANCE FOR INSTALLATION OF STATIONARY DOORS



100 FOURTH AVE NORTH  
BAYPORT, MN 55003-1096  
PH: (651) 264-5150 FX: (651) 264-5485

TITLE: A-SERIES FRENCHWOOD SIDELITE & TRANSOM DOOR WITH STORMWATCH (IMPACT)  
HORIZONTAL SECTIONS

PREPARED BY: BUILDING DROPS, INC.  
398 E. DANIA BEACH BLVD., STE. 338  
DANIA BEACH, FL 33004  
PH: (954) 399-8478  
FAX: (954) 744-4738  
WEB: www.buildingdrops.com

REMARKS	BY	DATE
2018 IBC UPDATE	SH	10.06.21

THE INSTALLATION DETAILS DESCRIBED HEREIN ARE GENERIC AND MAY NOT REFLECT ACTUAL CONDITIONS FOR A SPECIFIC SITE. IF SITE CONDITIONS CAUSE INSTALLATION TO DEVIATE FROM THE REQUIREMENTS DETAILED HEREIN, A LICENSED ENGINEER OR ARCHITECT SHALL PREPARE SITE SPECIFIC DOCUMENTS FOR USE WITH THIS DOCUMENT.



HERMES F. NORERO, P.E.  
TEXAS P.E. No 118471  
BUILDING DROPS, INC  
398 E. DANIA BEACH BLVD. # 338  
DANIA BEACH, FL 33004  
TBPE FIRM No. 13734

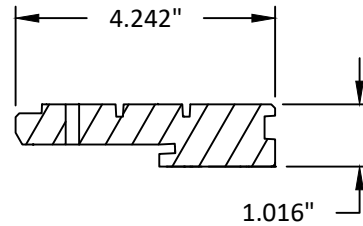
DATE:	08.02.12
DWG. BY:	MSS
CHK. BY:	HFN
SCALE:	NTS
DWG. #:	AWD060

SHEET 7 OF 9

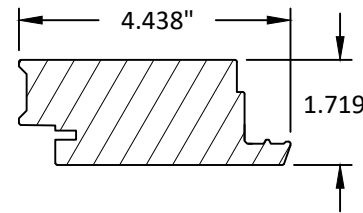
11/22/2021 9:09 AM  
s:\projects\andersen windows\tdi-21-0937 a-series fiberglass clad wood glazed is side hinged doors, impact resistant\dwg\awd060.dwg

BILL OF MATERIALS			
NO.	DESCRIPTION	MATERIAL	MANUFACTURER
1	FRAME HEAD/SIDE JAMB	WOOD	ANDERSEN
2	PANEL STILE	WOOD	ANDERSEN
3	PANEL TOP RAIL	WOOD	ANDERSEN
4	PANEL BOTTOM RAIL	WOOD	ANDERSEN
5	HEAD/JAMB CLADDING	FIBERGLASS	ANDERSEN
6	EXT. HEAD/JAMB CLADDING	FIBERGLASS	ANDERSEN
7	FRAME SILL	FIBERGLASS	ANDERSEN
8	EXT. FRAME SILL	FIBERGLASS	ANDERSEN
9	(NOT USED)	-	-
10	DROP CHANNEL	ALUMINUM 6063-T5	ANDERSEN
11	FLANGE	PVC	ANDERSEN
12	HINGE	STEEL	ANDERSEN
13	PANEL GLAZING STOP	WOOD	ANDERSEN
14	WEATHERSTRIPPING	SANTOPRENE	ANDERSEN
15	BOTTOM RAIL CLADDING	ALUMINUM 6063-T5	ANDERSEN
16	SILL COVER	PVC	ANDERSEN
17	SILL BRACKET	STAINLESS STEEL	ANDERSEN
18	3 PT. LOCK SYSTEM	STEEL	ANDERSEN
19	5 PT. LOCK SYSTEM	STEEL	ANDERSEN
20	PASSIVE LOCK SYSTEM	STEEL	ANDERSEN
21	HANDLE	-	ANDERSEN
22	WEATHERSTRIPPING (HEAD)	PVC	ANDERSEN
23	2 PC. ASTRAGAL	FIBERGLASS	ANDERSEN
24	2 PC. ASTRAGAL TRIM	FIBERGLASS	ANDERSEN
25	(NOT USED)	-	-
26	PANELSTOP	WOOD	ANDERSEN
27	4 PT LOCK SYSTEM	STEEL	ANDERSEN
28	6 PT. LOCK SYSTEM	STEEL	ANDERSEN
29	PASSIVE LOCK SYSTEM	STEEL	ANDERSEN
30	REMODELCLIP	STEEL	ANDERSEN
31	ACTIVE-STAT POST CLADDING	FIBERGLASS	ANDERSEN
32	ACTIVE-STAT POST	WOOD	ANDERSEN

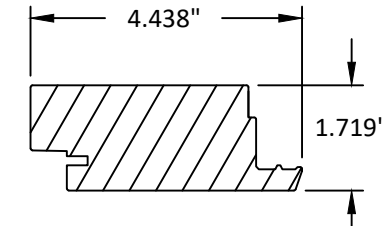
1 FRAME HEAD/SIDE JAMB  
WOOD



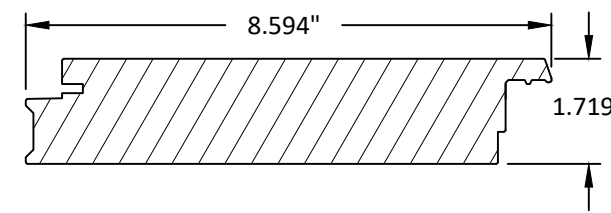
3 PANEL TOP RAIL  
WOOD



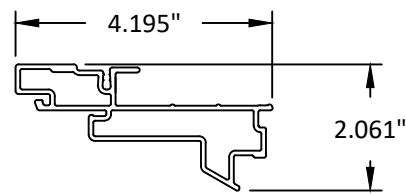
2 PANEL STILE  
WOOD



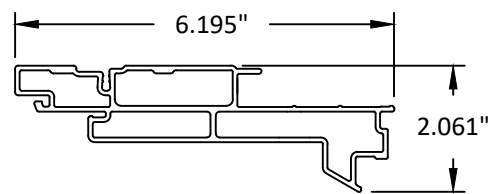
4 PANEL BOTTOM RAIL  
WOOD



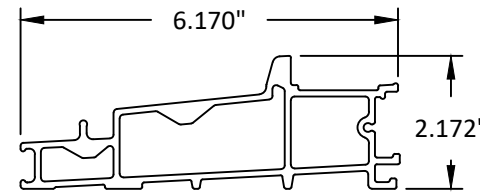
5 HEAD/JAMB FRAME CLADDING  
FIBERGLASS  
TYP. WALL THICKNESS 0.082"



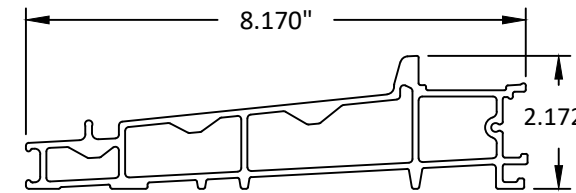
6 EXTENDED HEAD/JAMB FRAME CLADDING  
FIBERGLASS  
TYP. WALL THICKNESS 0.082"



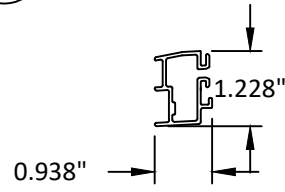
7 FRAME SILL  
FIBERGLASS  
TYP. WALL THICKNESS 0.090"



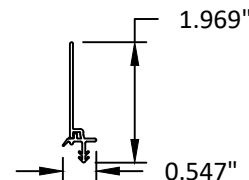
8 EXTENDED FRAME SILL  
FIBERGLASS  
TYP. WALL THICKNESS 0.090"



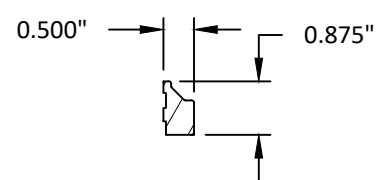
10 DROP CHANNEL  
ALUMINUM 6063-T5



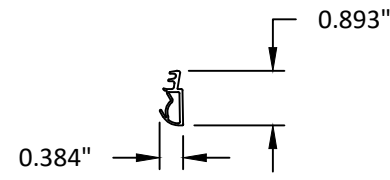
11 FLANGE  
PVC  
TYP. WALL THICKNESS 0.05"



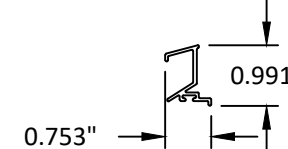
13 PANEL/GLAZING STOP  
WOOD



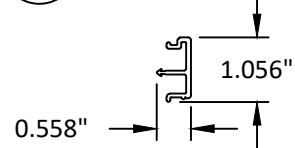
14 WEATHERSTRIPPING  
SANTOPRENE (DUROMETER: 70)  
TYP. WALL THICKNESS 0.047"



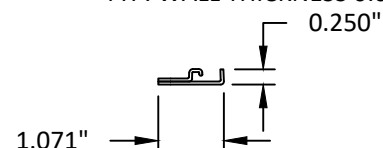
15 BOTTOM RAIL CLADDING  
ALUMINUM 6063-T5



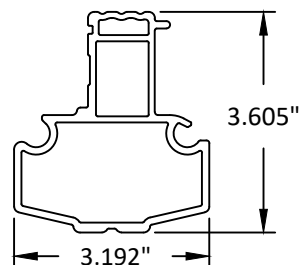
16 SILL COVER  
PVC



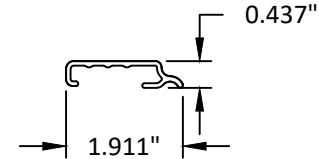
17 SILL BRACKET  
STAINLESS STEEL  
TYP. WALL THICKNESS 0.05"



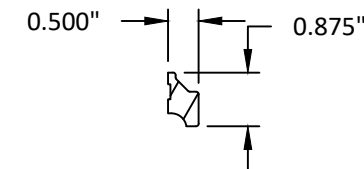
23 2 PC. ASTRAGAL  
FIBERGLASS  
TYP. WALL THICKNESS 0.100"



24 2 PC. ASTRAGAL TRIM  
FIBERGLASS  
TYP. WALL THICKNESS 0.075"



26 PANEL STOP  
WOOD



SEE ADDITIONAL DETAIL, SHEET 9

100 FOURTH AVE NORTH  
BAYPORT, MN 55003-1096  
PH: (651) 264-5150 FX: (651) 264-5485

TITLE: A-SERIES FRENCHWOOD SIDELITE & TRANSOM DOOR WITH STORMWATCH (IMPACT)

COMPONENTS AND BILL OF MATERIALS

PREPARED BY: BUILDING DROPS, INC.  
398 E. DANIA BEACH BLVD., STE. 338  
DANIA BEACH, FL 33004  
PH: (954) 399-8478  
FAX: (954) 744-4738  
WEB: www.buildingdrops.com

REMARKS	BY	DATE
2018 IBC UPDATE	SH	10.06.21

THE INSTALLATION DETAILS DESCRIBED HEREIN ARE GENERIC AND MAY NOT REFLECT ACTUAL CONDITIONS FOR A SPECIFIC SITE. IF SITE CONDITIONS CAUSE INSTALLATION TO DEVIATE FROM THE REQUIREMENTS DETAILED HEREIN, A LICENSED ENGINEER OR ARCHITECT SHALL PREPARE SITE SPECIFIC DOCUMENTS FOR USE WITH THIS DOCUMENT.

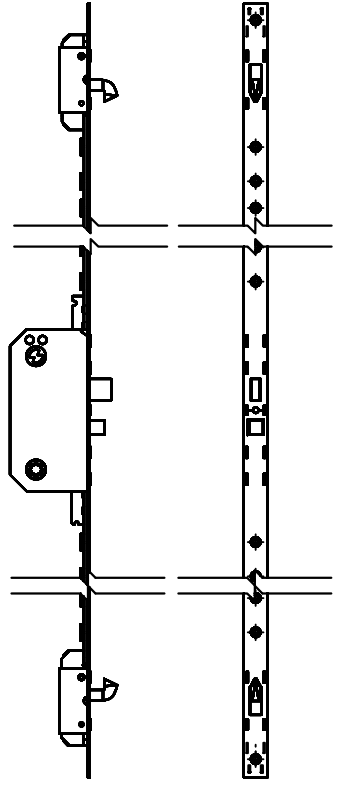
HERMES F. NORERO, P.E.  
TEXAS P.E. No 118471  
BUILDING DROPS, INC  
398 E. DANIA BEACH BLVD. # 338  
DANIA BEACH, FL 33004  
TBPE FIRM No. 13734

DATE:	08.02.12
DWG. BY:	MSS
CHK. BY:	HFN
SCALE:	NTS
DWG. #:	AWD060

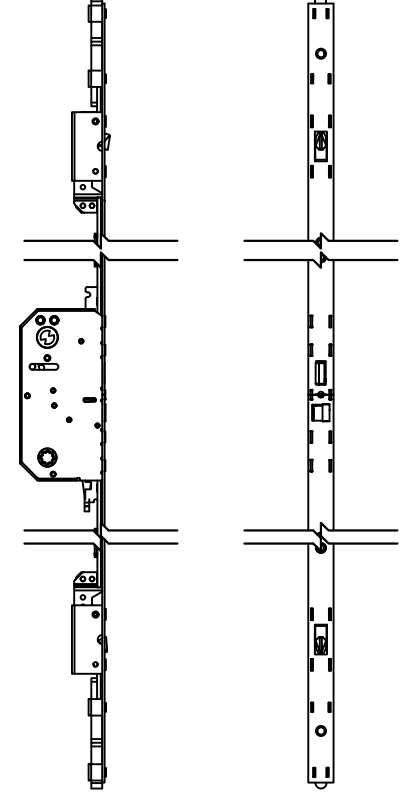


11/22/2021 9:09 AM

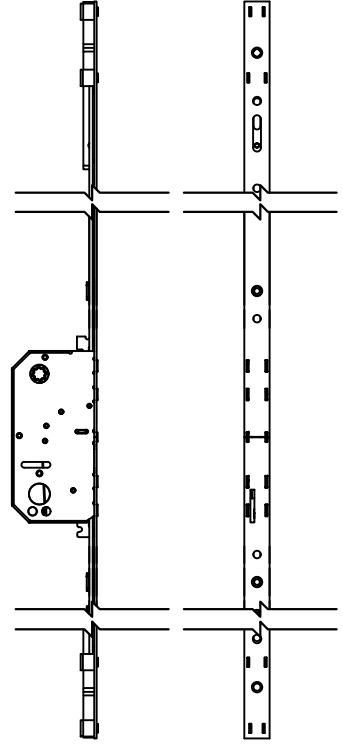
18 ACTIVE SINGLE DOOR (8' OR LESS)  
3 PT. LOCK SYSTEM  
STEEL



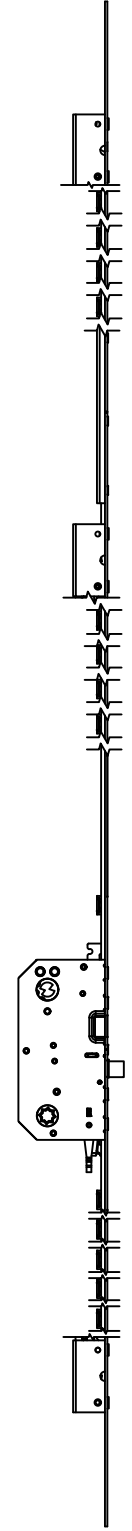
19 ACTIVE DOUBLE DOOR (8' OR LESS)  
5 PT. LOCK SYSTEM  
STEEL



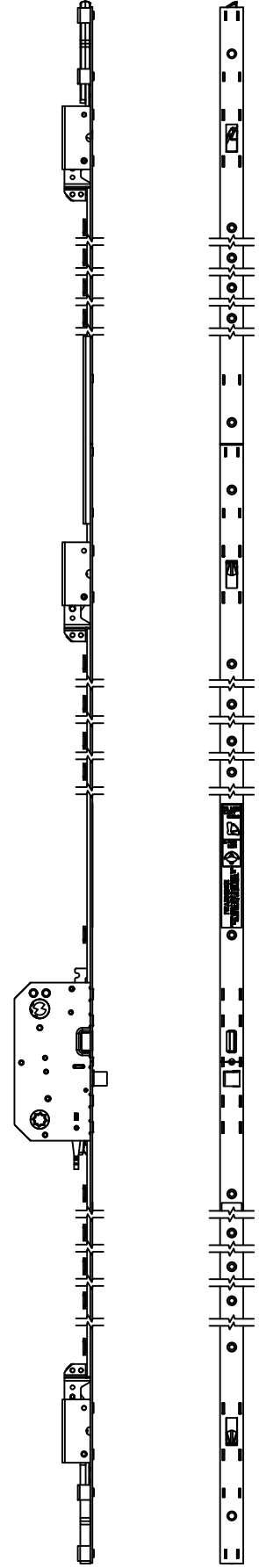
20 PASSIVE DOUBLE DOOR (8' OR LESS)  
PASSIVE LOCK SYSTEM  
STEEL



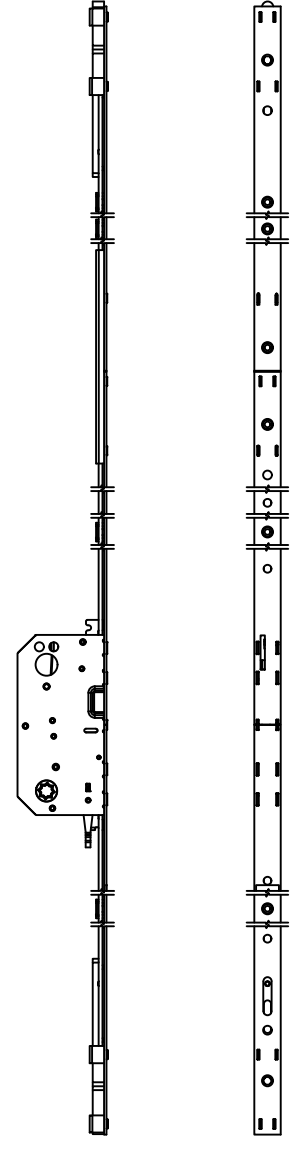
27 ACTIVE SINGLE DOOR (ABOVE 8')  
4 PT. LOCK SYSTEM  
STEEL



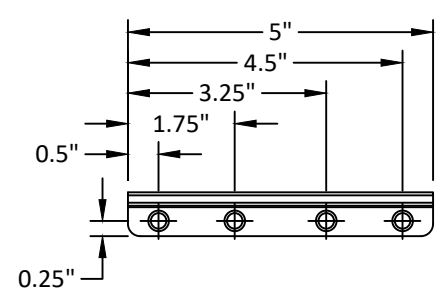
28 ACTIVE DOUBLE DOOR (ABOVE 8')  
6 PT. LOCK SYSTEM  
STEEL



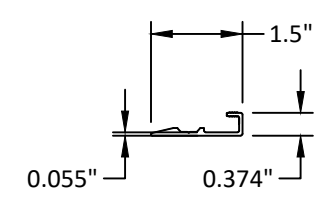
29 PASSIVE DOUBLE DOOR (ABOVE 8')  
PASSIVE LOCK SYSTEM  
STEEL



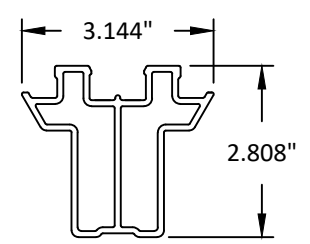
17 SILL BRACKET  
STAINLESS STEEL  
TYP. WALL THICKNESS 0.05"



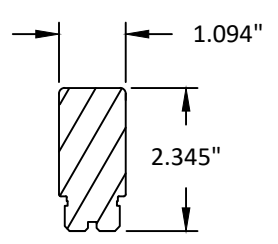
30 REMODEL CLIP  
STEEL - CONTINUOUS



31 ACTIVE-STAT POST CLADDING  
FIBERGLASS  
TYP. WALL THICKNESS 0.100"



32 ACTIVE-STAT POST  
WOOD




**ANDERSEN**  
WINDOWS & DOORS  
100 FOURTH AVE NORTH  
BAYPORT, MN 55003-1096  
PH: (651) 264-5150 FX: (651) 264-5485

TITLE:  
A-SERIES FRENCHWOOD SIDELITE &  
TRANSOM DOOR WITH STORMWATCH  
(IMPACT)


LOCK COMPONENT DETAILS

PREPARED BY:  
**BD**  
BUILDING DROPS

**BUILDING DROPS, INC.**  
398 E. DANIA BEACH BLVD., STE. 338  
DANIA BEACH, FL 33004  
PH: (954) 399-8478  
FAX: (954) 744-4738  
WEB: www.buildingdrops.com

REMARKS	BY	DATE
2018 IBC UPDATE	SH	10.06.21

THE INSTALLATION DETAILS DESCRIBED HEREIN ARE GENERIC AND MAY NOT REFLECT ACTUAL CONDITIONS FOR A SPECIFIC SITE. IF SITE CONDITIONS CAUSE INSTALLATION TO DEVIATE FROM THE REQUIREMENTS DETAILED HEREIN, A LICENSED ENGINEER OR ARCHITECT SHALL PREPARE SITE SPECIFIC DOCUMENTS FOR USE WITH THIS DOCUMENT.



HERMES F. NORERO, P.E.  
TEXAS P.E. No 118471  
BUILDING DROPS, INC  
398 E. DANIA BEACH BLVD. # 338  
DANIA BEACH, FL 33004  
TBPE FIRM No. 13734

DATE:	08.02.12	
DWG. BY:	MSS	CHK. BY: HFN
SCALE:	NTS	
DWG. #:	AWD060	

SHEET

9

OF 9