

REVISIONS			
REV	DESCRIPTION	DATE	APPROVED
A	REVISED PER NEW CODES	10/05/2021	R.L.

NOTES:

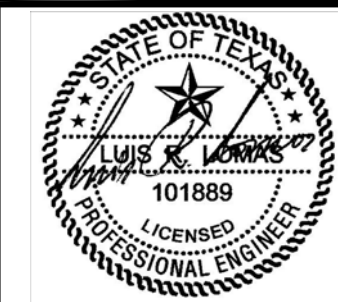
1. THE PRODUCT SHOWN HEREIN IS DESIGNED AND MANUFACTURED TO COMPLY WITH REQUIREMENTS OF THE 2018 IBC AND 2018 IRC.
2. WOOD FRAMING AND MASONRY OPENING TO BE DESIGNED AND ANCHORED TO PROPERLY TRANSFER ALL LOADS TO STRUCTURE. FRAMING AND MASONRY OPENING IS THE RESPONSIBILITY OF THE ARCHITECT OR ENGINEER OF RECORD.
3. 1X BUCK OVER MASONRY/CONCRETE IS OPTIONAL.
4. WHERE SHIM OR BUCK THICKNESS IS LESS THAN 1-1/2" UNITS MUST BE ANCHORED THROUGH THE FRAME IN ACCORDANCE WITH MANUFACTURER'S PUBLISHED INSTALLATION INSTRUCTIONS. ANCHORS SHALL BE SECURELY FASTENED DIRECTLY INTO MASONRY, CONCRETE OR OTHER STRUCTURAL SUBSTRATE MATERIAL.
5. WHERE WOOD BUCK THICKNESS IS 1-1/2" OR GREATER, BUCK SHALL BE SECURELY FASTENED TO MASONRY, CONCRETE OR OTHER STRUCTURAL SUBSTRATE. UNITS MAY BE ANCHORED THROUGH FRAME TO SECURED WOOD BUCK IN ACCORDANCE WITH MANUFACTURER'S PUBLISHED INSTALLATION INSTRUCTIONS.
6. WHERE 1X BUCK IS NOT USED DISSIMILAR MATERIALS MUST BE SEPARATED WITH APPROVED COATING OR MEMBRANE. SELECTION OF COATING OR MEMBRANE IS THE RESPONSIBILITY OF THE ARCHITECT OR ENGINEER OF RECORD.
7. BUCKS SHALL EXTEND BEYOND UNIT FRAME INTERIOR FACE SO THAT FULL FRAME SUPPORT IS PROVIDED.
8. FOR FIN INSTALLATION SHIM AS NEEDED. FOR FRAME INSTALLATION SHIM AS REQUIRED AT EACH ANCHOR LOCATION WITH LOAD BEARING SHIM. SHIM WHERE SPACE OF 1/16" OR GREATER OCCURS. MAXIMUM ALLOWABLE SHIM STACK TO BE 1/4".
9. SHIMS SHALL BE LOCATED, APPLIED AND MADE FROM MATERIALS AND THICKNESS CAPABLE OF SUSTAINING APPLICABLE LOADS.
10. WIND LOAD DURATION FACTOR Cd=1.6 WAS USED FOR WOOD ANCHOR CALCULATIONS.
11. FRAME MATERIAL: EXTRUDED ALUMINUM 6063-T6.
12. UNITS MUST BE GLAZED PER ASTM E1300, SEE SHEET 2 FOR GLASS DETAIL.
13. APPROVED IMPACT PROTECTIVE SYSTEM IS NOT REQUIRED FOR THIS PRODUCT IN WIND BORNE DEBRIS REGIONS.
14. FOR ANCHORING THROUGH FRAME INTO WOOD FRAMING OR 2X BUCK USE #12 WOOD SCREWS WITH SUFFICIENT LENGTH TO ACHIEVE A 1 1/4" MINIMUM EMBEDMENT INTO SUBSTRATE. LOCATE ANCHORS AS SHOWN IN ELEVATIONS AND INSTALLATION DETAILS.

15. FOR ANCHORING THROUGH FRAME INTO MASONRY/CONCRETE USE 1/4" ELCO CRETE-FLEX TAPCONS WITH SUFFICIENT LENGTH TO ACHIEVE A 1 1/4" MINIMUM EMBEDMENT INTO SUBSTRATE WITH 2 1/2" MINIMUM EDGE DISTANCE. LOCATE ANCHORS AS SHOWN IN ELEVATIONS AND INSTALLATION DETAILS.
16. FOR ANCHORING THROUGH FRAME INTO METAL STRUCTURE USE #12 SMS OR SELF DRILLING SCREWS WITH SUFFICIENT LENGTH TO ACHIEVE 3 THREADS MINIMUM BEYOND STRUCTURE INTERIOR WALL. LOCATE ANCHORS AS SHOWN IN ELEVATIONS AND INSTALLATION DETAILS.
17. ALL FASTENERS TO BE CORROSION RESISTANT.
18. INSTALLATION ANCHORS SHALL BE INSTALLED IN ACCORDANCE WITH ANCHOR MANUFACTURER'S INSTALLATION INSTRUCTIONS AND ANCHORS SHALL NOT BE USED IN SUBSTRATES WITH STRENGTHS LESS THAN THE MINIMUM STRENGTH SPECIFIED BELOW:
 - A. WOOD: MINIMUM SPECIFIC GRAVITY OF G=0.42
 - B. CONCRETE: MINIMUM COMPRESSIVE STRENGTH OF 2,000 PSI.
 - C. MASONRY: HOLLOW/FILLED BLOCK PER ASTM C90 WITH Fm=2,000PSI MINIMUM.
 - D. METAL STRUCTURE: STEEL 18GA (.048") FY=33KSI/FU=52KSI OR ALUMINUM 6063-T5 FU=30KSI 1/8" THICK MINIMUM

SIGNED: 11/22/2021

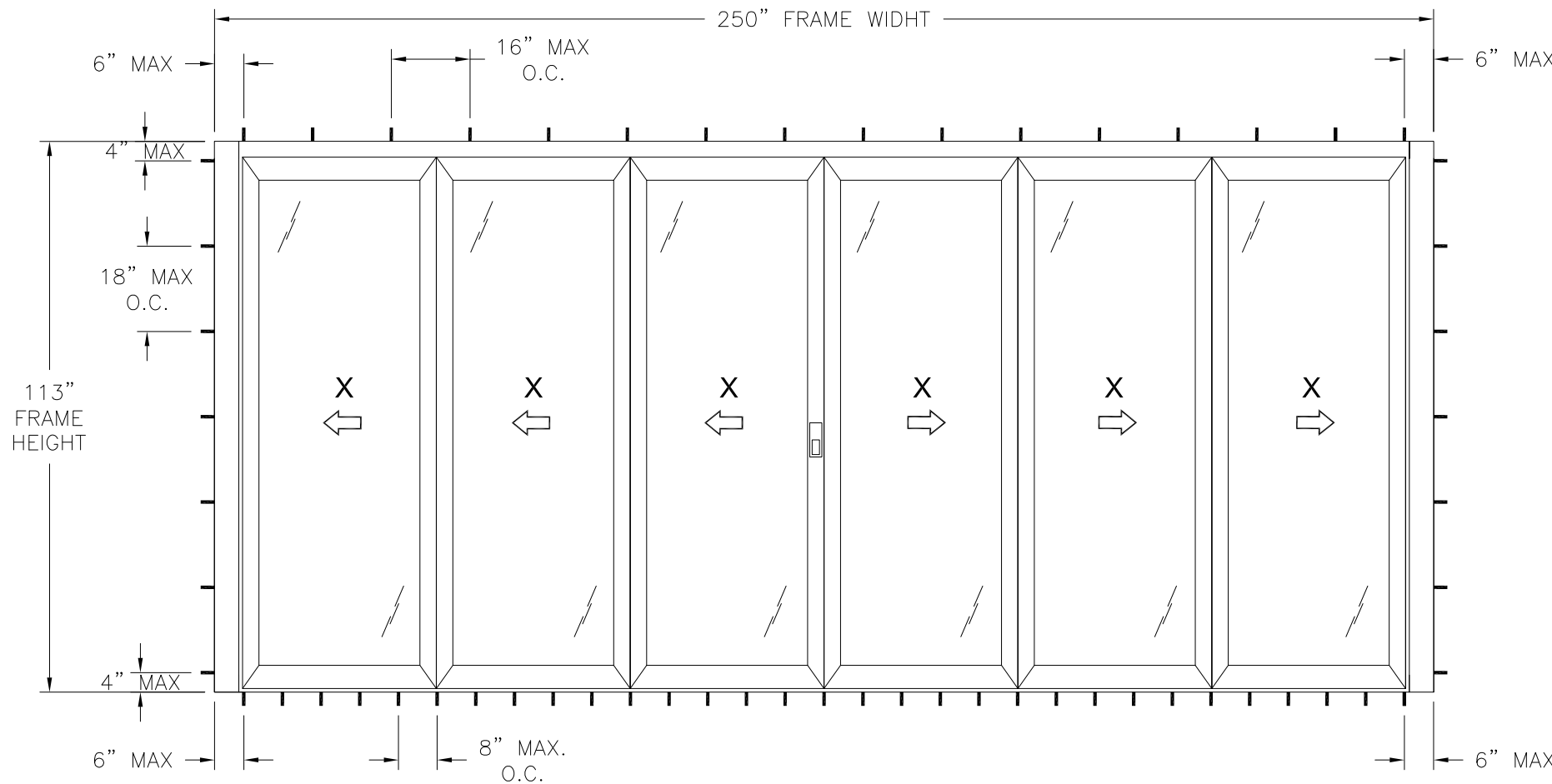
TABLE OF CONTENTS	
SHEET NO.	DESCRIPTION
1	NOTES
2	ELEVATION AND GLAZING DETAIL
3	CROSS SECTIONS
4 - 6	INSTALLATION DETAILS
7 - 8	COMPONENTS

CENTOR NORTH AMERICA INC. 966-130 CORPORATE BLVD. AURORA, IL 60502		
200 SERIES/MODEL 205 FOLDING OUTWARD OPENING DOOR WITH WOOD TRIM - IMPACT NOTES		
DRAWN: A.R.	DWG NO. 08-03431	REV A
SCALE NTS	DATE 05/20/19	SHEET 1 OF 8
L. ROBERTO LOMAS P.E. 1432 WOODFORD RD LEWISVILLE, NC 27023 434-688-0609 rllomas@lrlomaspe.com		

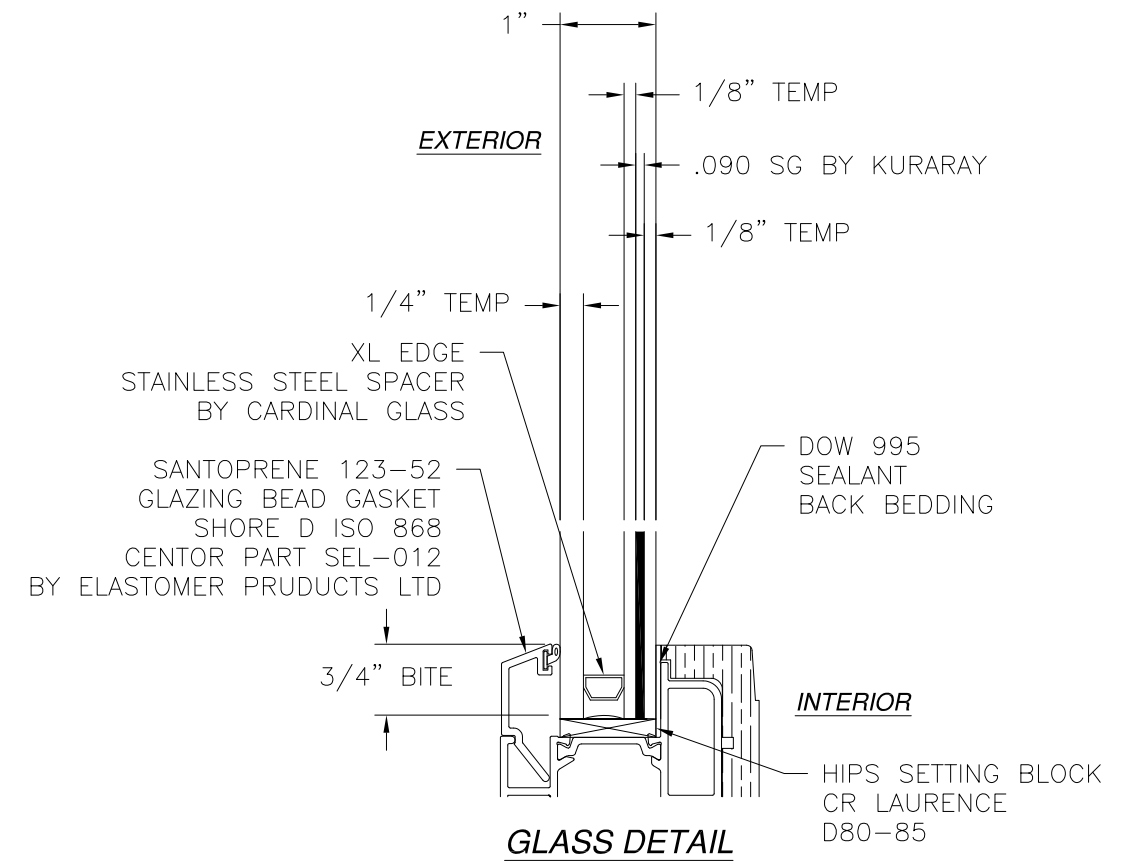


Luis R. Lomas P.E.
TX No.: 101889

REVISIONS			
REV	DESCRIPTION	DATE	APPROVED
A	REVISED PER NEW CODES	10/05/2021	R.L.



- NOTES:**
- PANEL SIZE: 39 3/4" x 109"
 - D.L.O.: 33" x 99 1/2"



200 SERIES/MODEL 205 FOLDING OUTWARD DOOR
EXTERIOR VIEW

UNLIMITED NUMBER OF PANELS ARE APPROVED AS LONG AS THE INDIVIDUAL PANEL HEIGHT AND WIDTH AND GLASS DAYLIGHT OPENING SIZE IN THE INSTALLED ASSEMBLY DO NOT EXCEED THE HEIGHT AND WIDTH OF THE PANEL SIZES AND THE GLASS DAYLIGHT OPENING SIZES SHOWN

DESIGN PRESSURE RATING	IMPACT RATING
±55.0PSF	LARGE AND SMALL MISSILE IMPACT

MISSILE LEVEL D, WIND ZONE 4

SIGNED: 11/22/2021

CENTOR NORTH AMERICA INC.
966-130 CORPORATE BLVD.
AURORA, IL 60502

200 SERIES/MODEL 205 FOLDING OUTWARD
OPENING DOOR WITH WOOD TRIM - IMPACT
ELEVATION AND GLAZING DETAIL;

DRAWN: A.R.	DWG NO. 08-03431	REV A
SCALE NTS	DATE 05/20/19	SHEET 2 OF 8

L. ROBERTO LOMAS P.E.
1432 WOODFORD RD LEWISVILLE, NC 27023
434-688-0609 rllomas@rlomaspe.com



Luis R. Lomas P.E.
TX No.: 101889

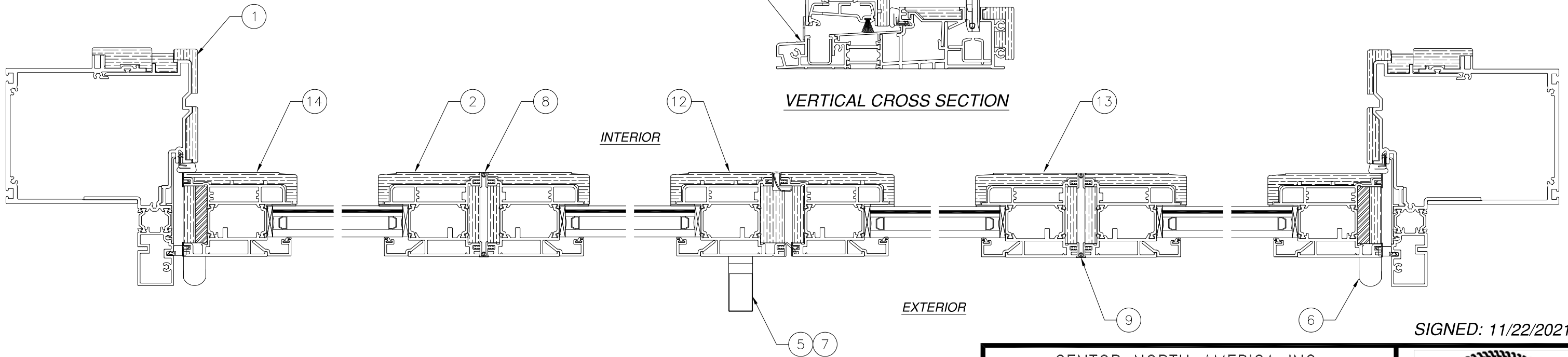
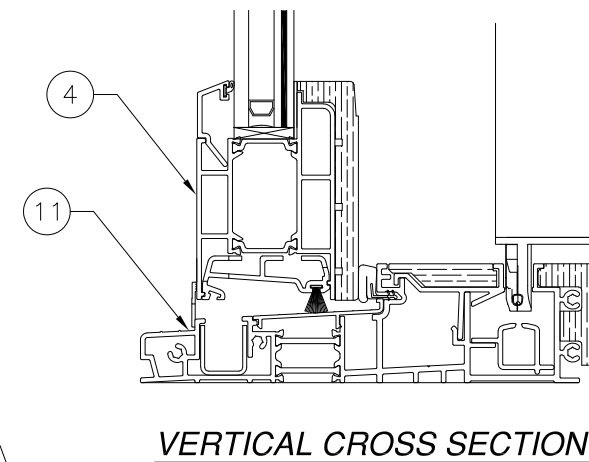
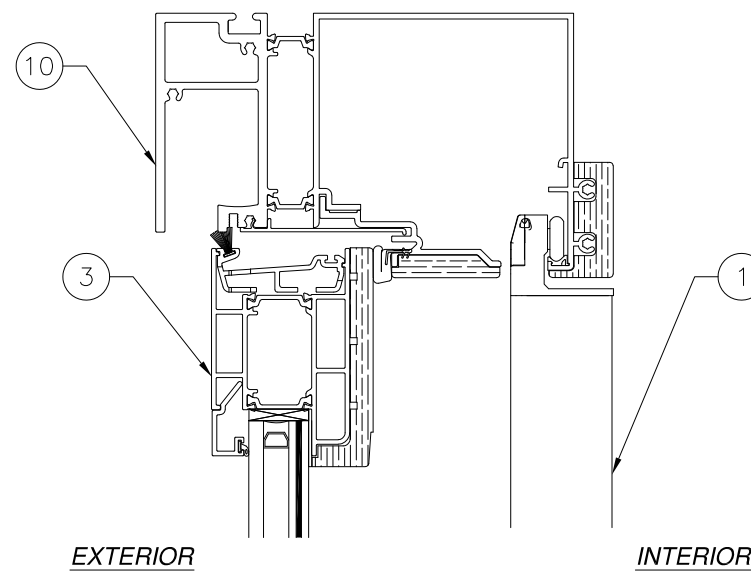
HARDWARE SCHEDULE

A.	(6) CONCEALED HINGES, 7 1/4" FROM TOP AND BOTTOM AND 7 1/4" MAX O.C.
B.	(2) INTERMEDIATE CARRIER AT TOP OF CENTER PANEL OF EACH SIDE
C.	(2) CENTER INTERMEDIATE HINGE, LOCATED BETWEEN TOP CARRIER AND BOTTOM GUIDE
D.	(8) COVER PLATES AT TOP CARRIER AND BOTTOM GUIDE
E.	(2) TOP PIVOT HINGE AND (2) BOTTOM PIVOT HINGE AT LEFT AND RIGHT SIDE OF JAMBS
F.	(1) EXTERNAL CYLINDER AND INTERNAL SNIB, 32" FROM SILL WITH KEEPER SYSTEM
G.	(1) AUTO LATCH LOCKS, 32" FROM SILL AT TOP AND BOTTOM LEFT CORNERS OF INTERMEDIATE PANELS
H.	(1) ALUMINUM REINFORCEMENT BAR AT JAMB STILE

BILL OF MATERIALS				
ITEM NO.:	PART NUMBER	DESCRIPTION	MANUFACTURER	MATERIAL
1	ASSY-0713	INOPERABLE JAMB	CENTOR	
2	ASSY-0813	DOOR PANEL STILE	CENTOR	
3	ASSY-0816	TOP RAIL	CENTOR	
4	ASSY-0817	BOTTOM RAIL	CENTOR	
5	ASSY-0814	ENTRANCE HANDLE	CENTOR	
6	ASSY-0813	PIVOT SET	CENTOR	
7	ASSY-0814	ENTRANCE LOCK	CENTOR	
8	ASSY-0560	CONCEALED HINGE	CENTOR	
9	ASSY-0813	INTERMEDIATE SET	CENTOR	
10	ASSY-0637	HEAD	CENTOR	
11	ASSY-0571	SILL	CENTOR	
12	ASSY-0814	STILE ACTIVE	CENTOR	
13	ASSY-0815	STILE PASSIVE	CENTOR	
14	ASSY-0807	JAMB STILE	CENTOR	
15	ASSY-0618	INTERMEDIATE CARRIER	CENTOR	
16	ASSY-0620	INTERMEDIATE HINGE	CENTOR	
17	ASSY-0331	TOP PIVOT	CENTOR	
18	ASSY-0332	END CARRIER	CENTOR	
19	ASSY-0626	BOTTOM GUIDE JAMB	CENTOR	
20	ASSY-0565	BOTTOM LEFT PIVOT	CENTOR	
21	ASSY-0619	INTERMEDIATE GUIDE	CENTOR	

NOTE:
1. ITEMS 15 THROUGH 21 ARE USED BUT NOT SHOWN,
SEE SHEET 9 FOR DETAILS.

REVISIONS			
REV	DESCRIPTION	DATE	APPROVED
A	REVISED PER NEW CODES	10/05/2021	R.L.



HORIZONTAL CROSS SECTION

VERTICAL CROSS SECTION

SIGNED: 11/22/2021

CENTOR NORTH AMERICA INC.
966-130 CORPORATE BLVD.
AURORA, IL 60502

200 SERIES/MODEL 205 FOLDING OUTWARD
OPENING DOOR WITH WOOD TRIM - IMPACT
CROSS SECTIONS

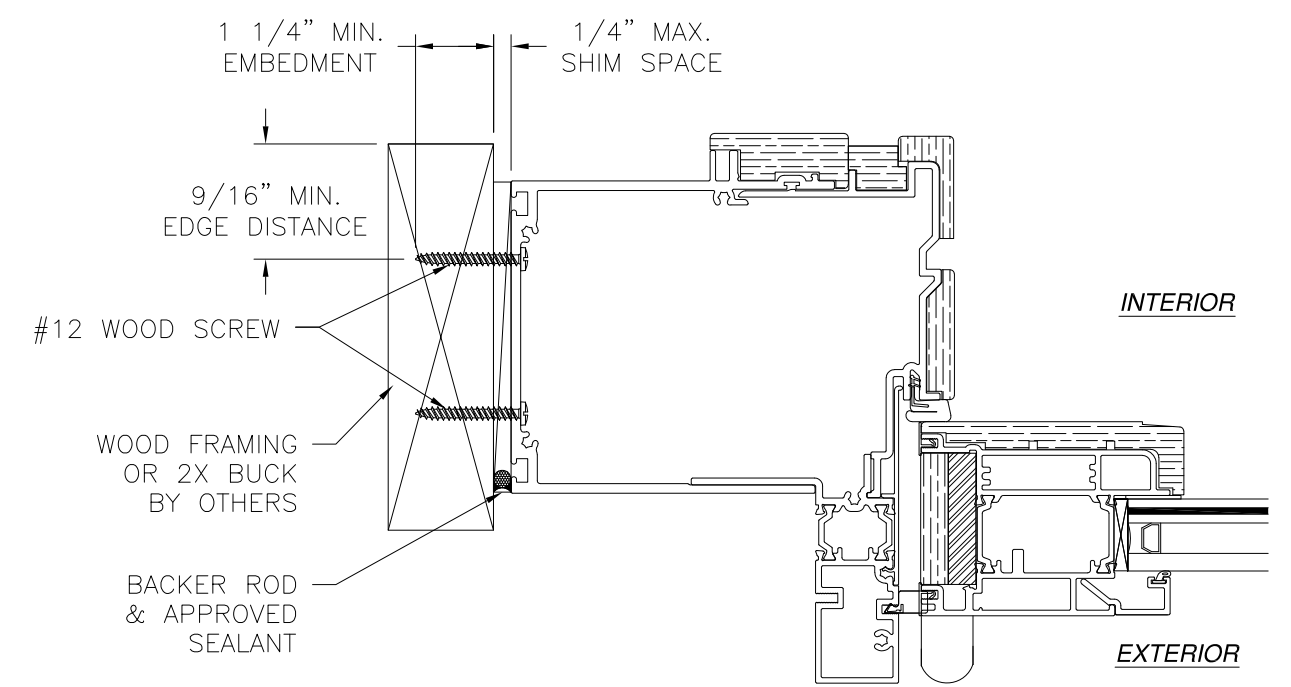
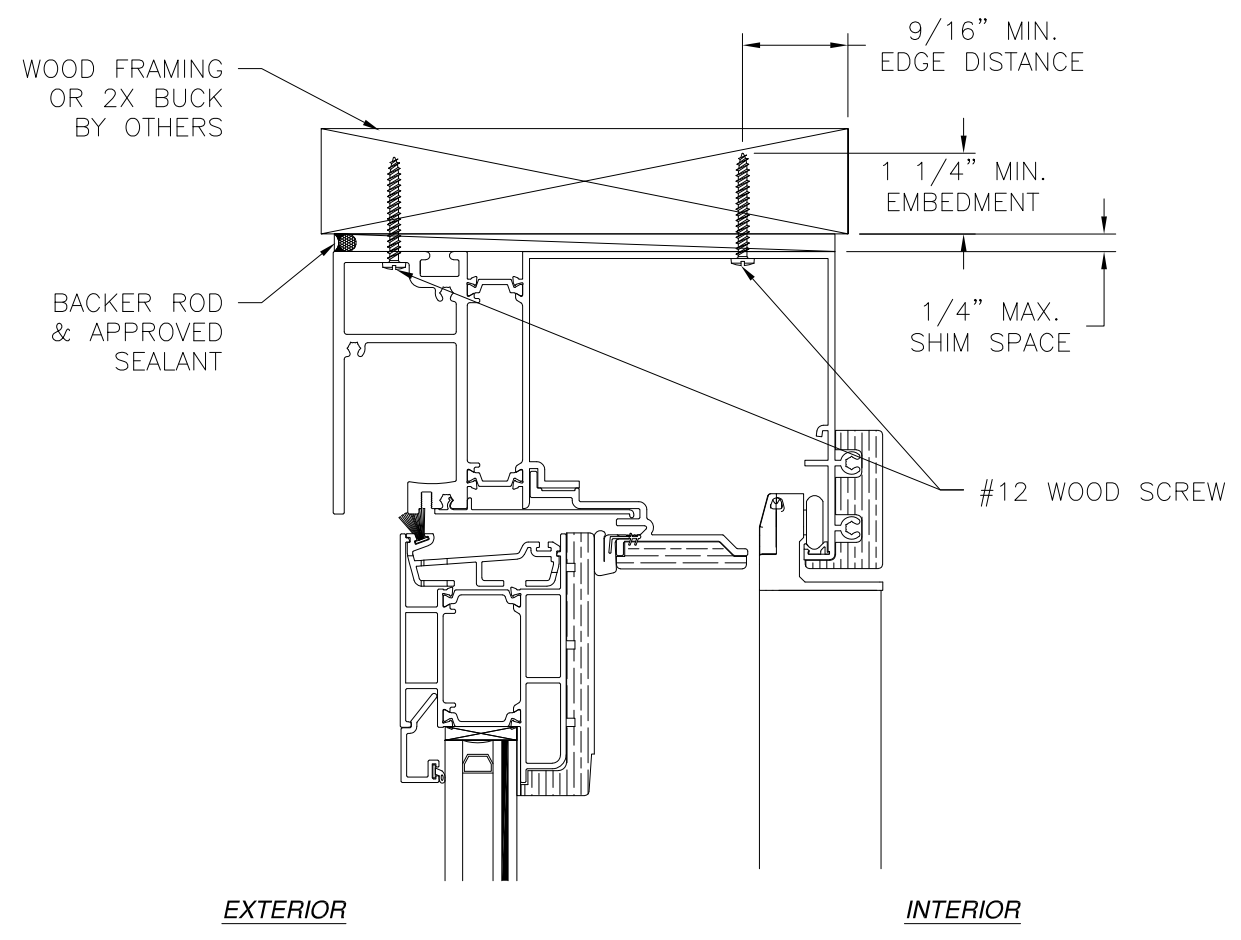
DRAWN: A.R.	DWG NO. 08-03431	REV A
SCALE NTS	DATE 05/20/19	SHEET 3 OF 8

L. ROBERTO LOMAS P.E.
1432 WOODFORD RD LEWISVILLE, NC 27023
434-688-0609 rllomas@rlomaspe.com

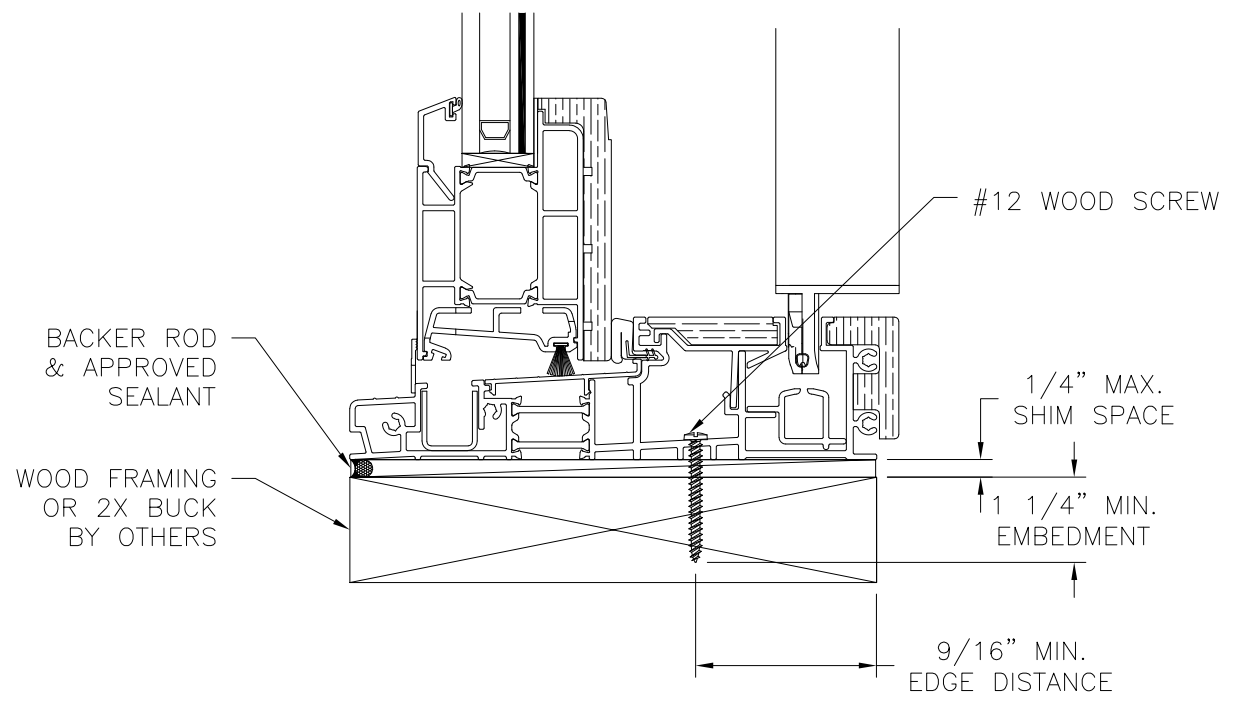


Luis R. Lomas P.E.
TX No.: 101889

REVISIONS			
REV	DESCRIPTION	DATE	APPROVED
A	REVISED PER NEW CODES	10/05/2021	R.L.



JAMB INSTALLATION DETAIL
WOOD FRAMING OR 2X BUCK INSTALLATION



VERTICAL CROSS SECTION
WOOD FRAMING OR 2X BUCK INSTALLATION

- NOTES:**
1. INTERIOR AND EXTERIOR FINISHES, BY OTHERS, NOT SHOWN FOR CLARITY.
 2. PERIMETER AND JOINT SEALANT BY OTHERS TO BE DESIGNED IN ACCORDANCE WITH ASTM E2112

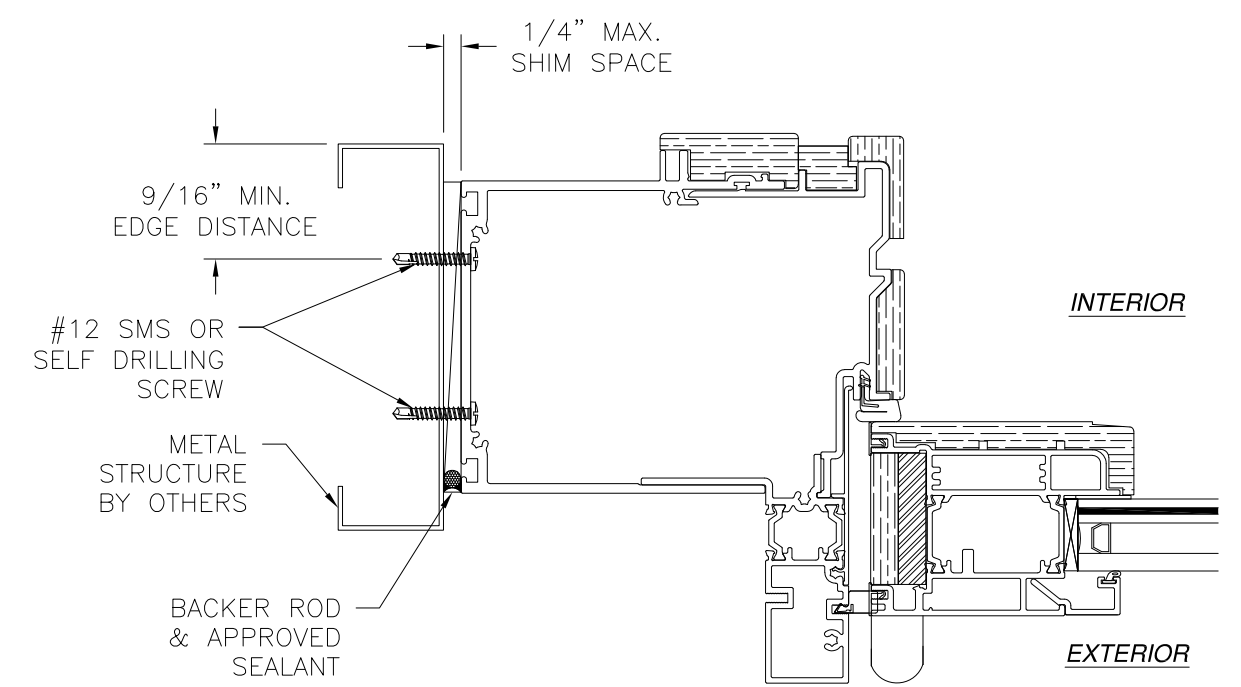
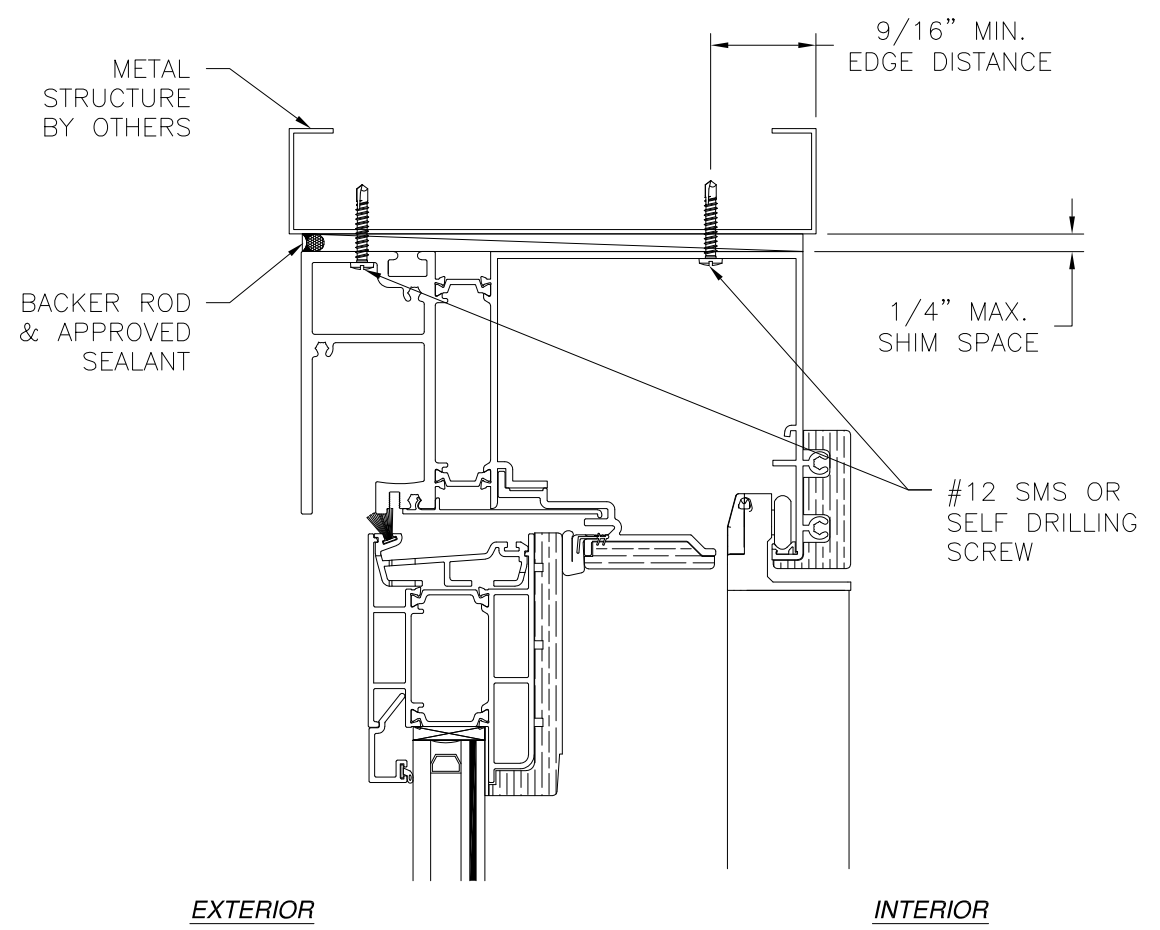
SIGNED: 11/22/2021

CENTOR NORTH AMERICA INC. 966-130 CORPORATE BLVD. AURORA, IL 60502		
200 SERIES/MODEL 205 FOLDING OUTWARD OPENING DOOR WITH WOOD TRIM - IMPACT INSTALLATION DETAILS		
DRAWN: A.R.	DWG NO. 08-03431	REV A
SCALE NTS	DATE 05/20/19	SHEET 4 OF 8
L. ROBERTO LOMAS P.E. 1432 WOODFORD RD LEWISVILLE, NC 27023 434-688-0609 rllomas@lrlomaspe.com		

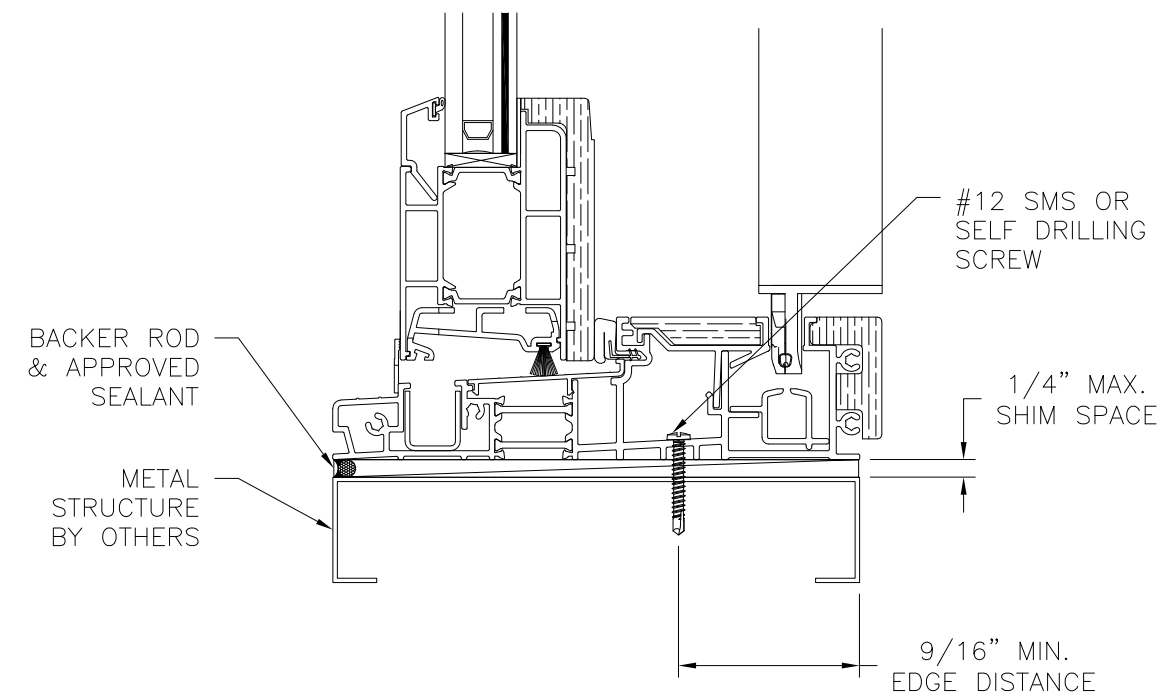


Luis R. Lomas P.E.
TX No.: 101889

REVISIONS			
REV	DESCRIPTION	DATE	APPROVED
A	REVISED PER NEW CODES	10/05/2021	R.L.



JAMB INSTALLATION DETAIL
METAL STRUCTURE INSTALLATION



VERTICAL CROSS SECTION
METAL STRUCTURE INSTALLATION

- NOTES:**
1. INTERIOR AND EXTERIOR FINISHES, BY OTHERS, NOT SHOWN FOR CLARITY.
 2. PERIMETER AND JOINT SEALANT BY OTHERS TO BE DESIGNED IN ACCORDANCE WITH ASTM E2112

SIGNED: 11/22/2021

CENTOR NORTH AMERICA INC.
966-130 CORPORATE BLVD.
AURORA, IL 60502

200 SERIES/MODEL 205 FOLDING OUTWARD
OPENING DOOR WITH WOOD TRIM - IMPACT
INSTALLATION DETAILS

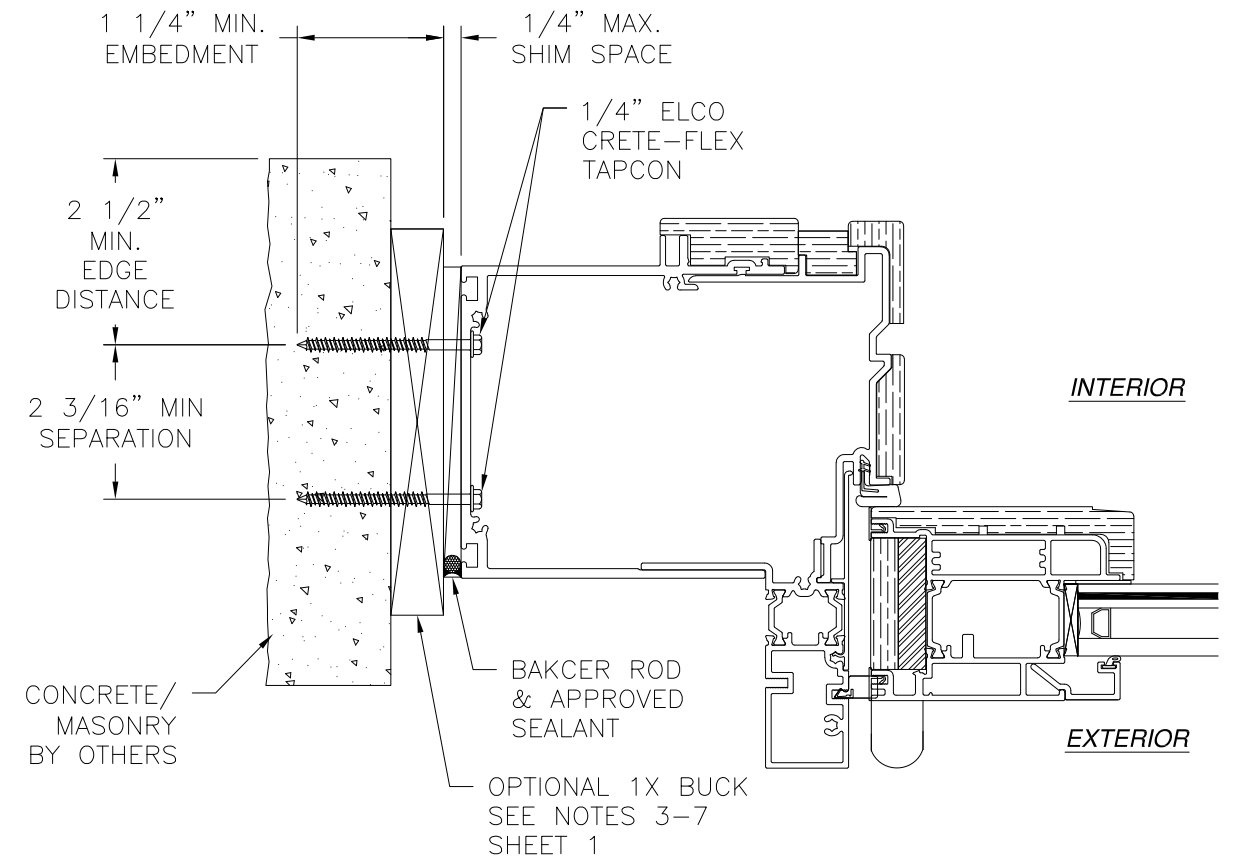
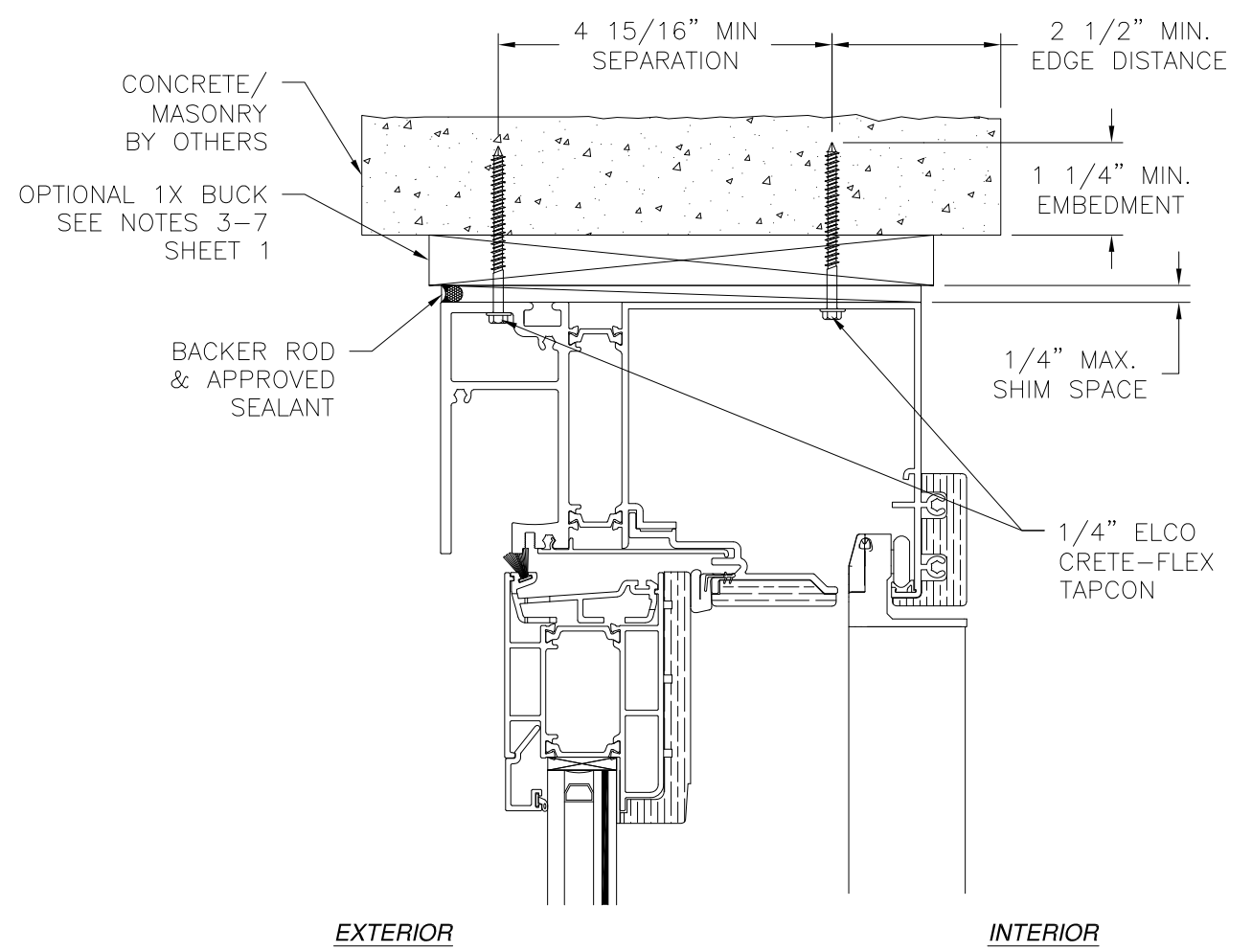
DRAWN: A.R.	DWG NO. 08-03431	REV A
SCALE NTS	DATE 05/20/19	SHEET 5 OF 8

L. ROBERTO LOMAS P.E.
1432 WOODFORD RD LEWISVILLE, NC 27023
434-688-0609 rllomas@rlomaspe.com

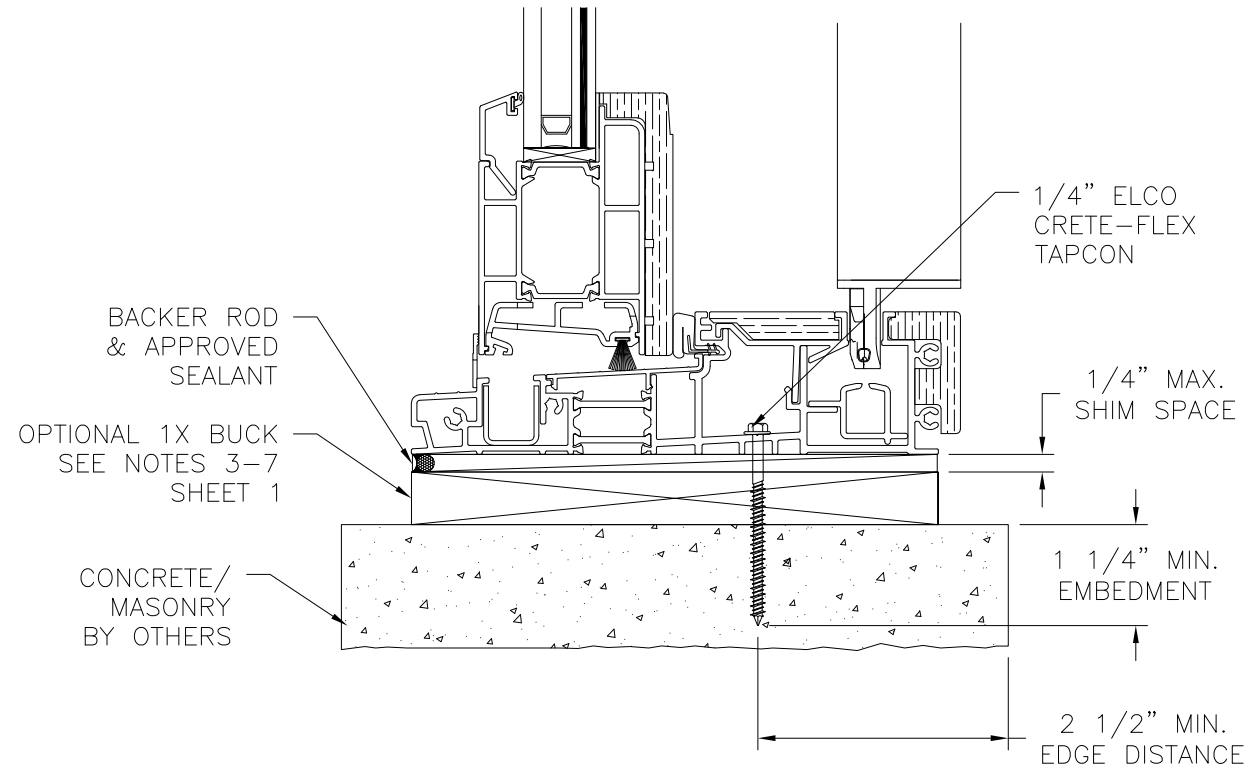


Luis R. Lomas P.E.
TX No.: 101889

REVISIONS			
REV	DESCRIPTION	DATE	APPROVED
A	REVISED PER NEW CODES	10/05/2021	R.L.



JAMB INSTALLATION DETAIL
CONCRETE/MASONRY INSTALLATION



VERTICAL CROSS SECTION
CONCRETE/MASONRY INSTALLATION

- NOTES:**
1. INTERIOR AND EXTERIOR FINISHES, BY OTHERS, NOT SHOWN FOR CLARITY.
 2. PERIMETER AND JOINT SEALANT BY OTHERS TO BE DESIGNED IN ACCORDANCE WITH ASTM E2112

SIGNED: 11/22/2021

CENTOR NORTH AMERICA INC.
966-130 CORPORATE BLVD.
AURORA, IL 60502

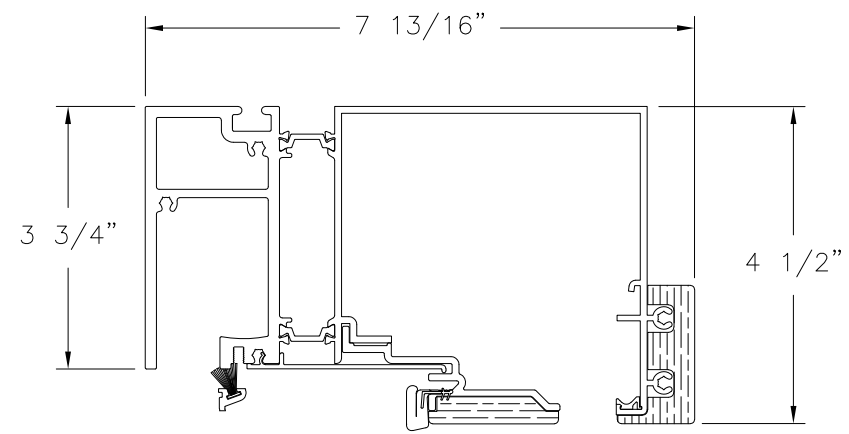
200 SERIES/MODEL 205 FOLDING OUTWARD
OPENING DOOR WITH WOOD TRIM - IMPACT
INSTALLATION DETAILS

DRAWN: A.R.	DWG NO. 08-03431	REV A
SCALE NTS	DATE 05/20/19	SHEET 6 OF 8

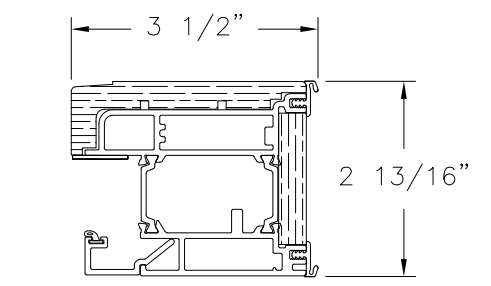
L. ROBERTO LOMAS P.E.
1432 WOODFORD RD LEWISVILLE, NC 27023
434-688-0609 rllomas@rlomaspe.com



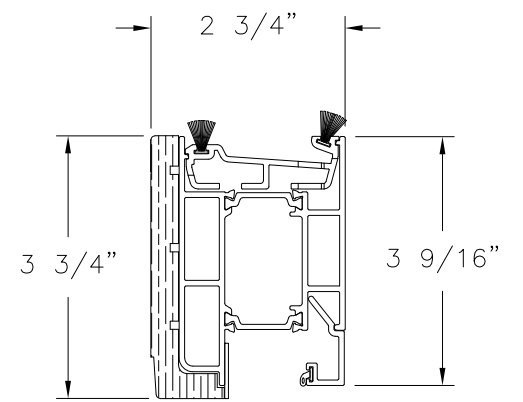
Luis R. Lomas P.E.
TX No.: 101889



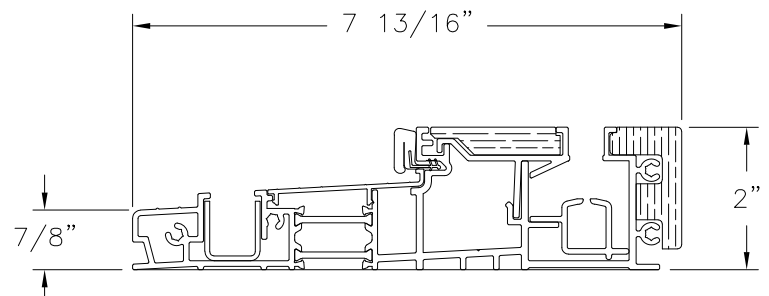
⑩ **HEAD**
ASSY-0637



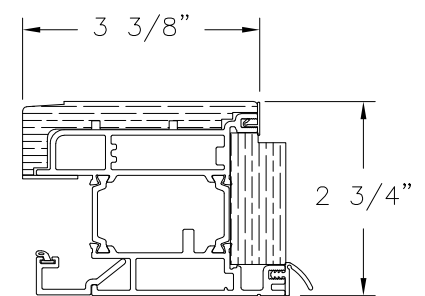
② **COMMON STILE**
ASSY-0813



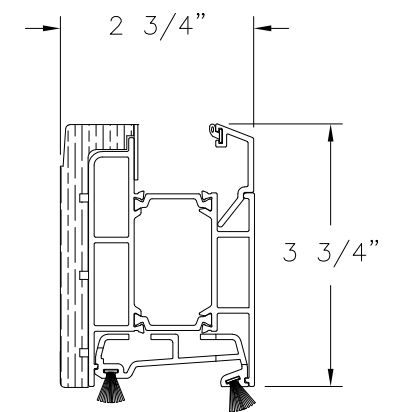
③ **TOP RAIL**
ASSY-0816



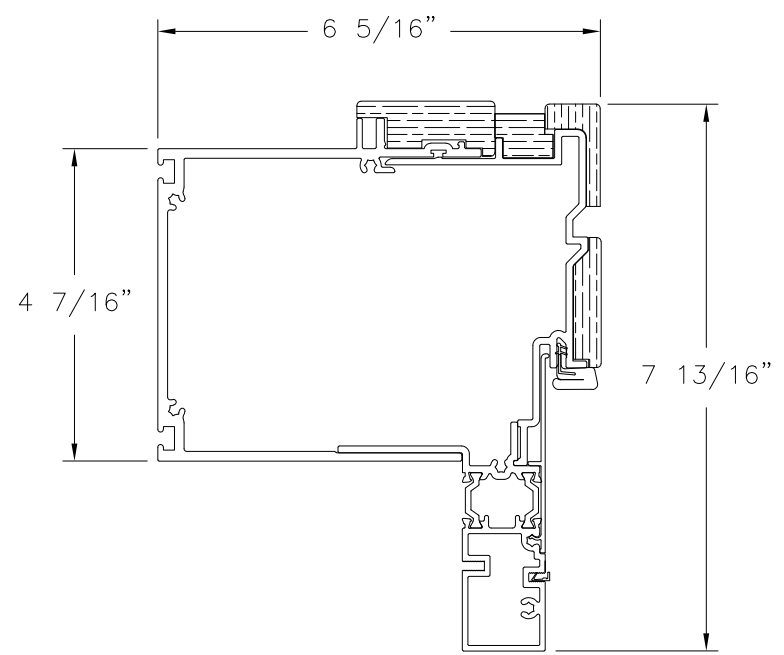
⑪ **SILL**
ASSY-0571



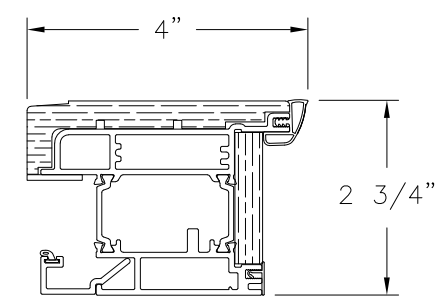
⑫ **STILE ACTIVE**
ASSY-0814



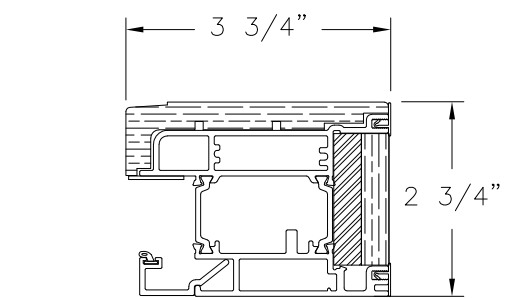
④ **BOTTOM RAIL**
ASSY-0817



① **INOPERABLE JAMB**
ASSY-0713



⑬ **STILE PASSIVE**
ASSY-0815



⑭ **JAMB STILE HURRICANE**
ASSY-0807

REVISIONS			
REV	DESCRIPTION	DATE	APPROVED
A	REVISED PER NEW CODES	10/05/2021	R.L.

SIGNED: 11/22/2021

CENTOR NORTH AMERICA INC.
966-130 CORPORATE BLVD.
AURORA, IL 60502

200 SERIES/MODEL 205 FOLDING OUTWARD
OPENING DOOR WITH WOOD TRIM - IMPACT
COMPONENTS

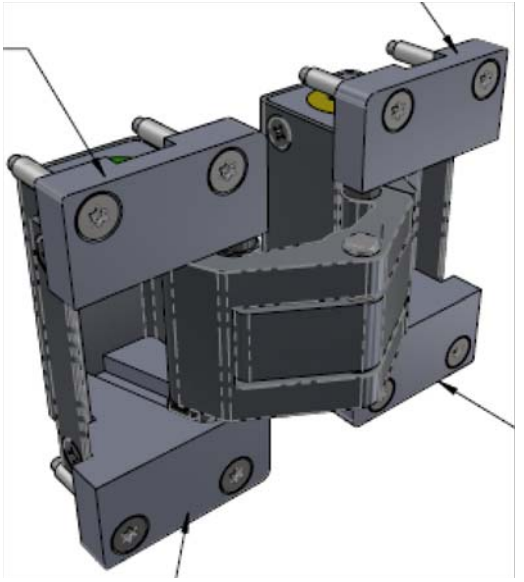
DRAWN: A.R.	DWG NO. 08-03431	REV A
SCALE NTS	DATE 05/20/19	SHEET 7 OF 8

L. ROBERTO LOMAS P.E.
1432 WOODFORD RD LEWISVILLE, NC 27023
434-688-0609 rllomas@lrlomaspe.com



Luis R. Lomas P.E.
TX No.: 101889

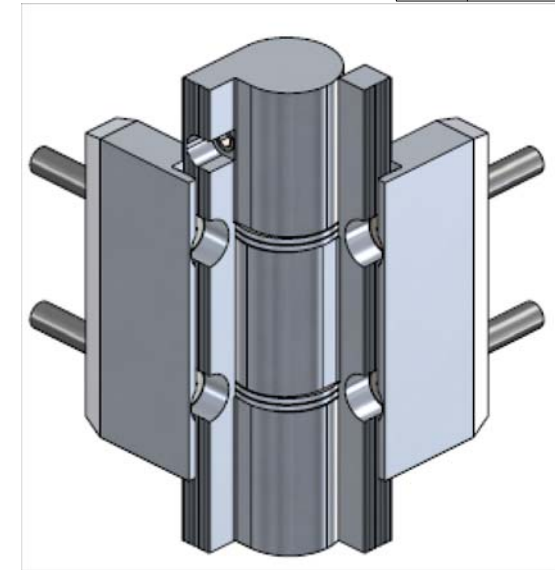
REVISIONS			
REV	DESCRIPTION	DATE	APPROVED
A	REVISED PER NEW CODES	10/05/2021	R.L.



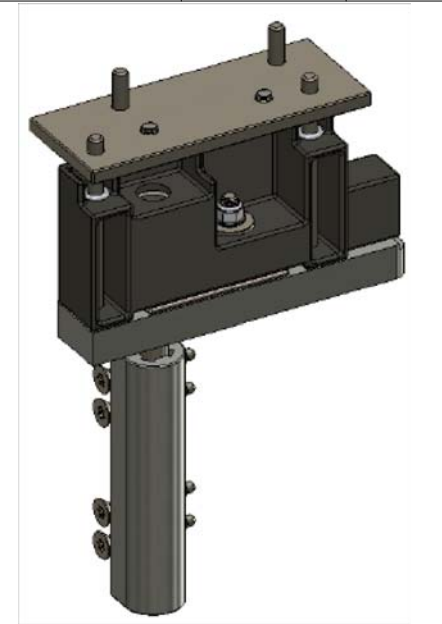
8 **CONCEALED HINGE**
ASSY-0560



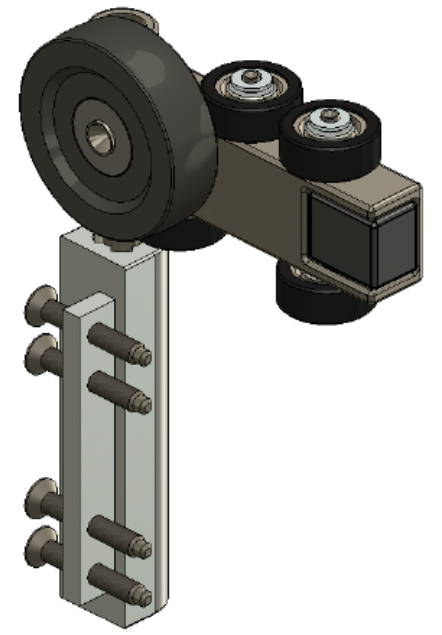
15 **INTERMEDIATE CARRIER**
ASSY-0618



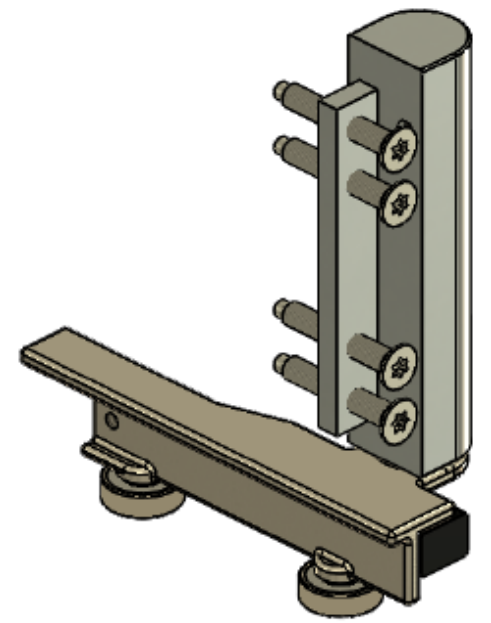
16 **INTERMEDIATE HINGE**
ASSY-0620



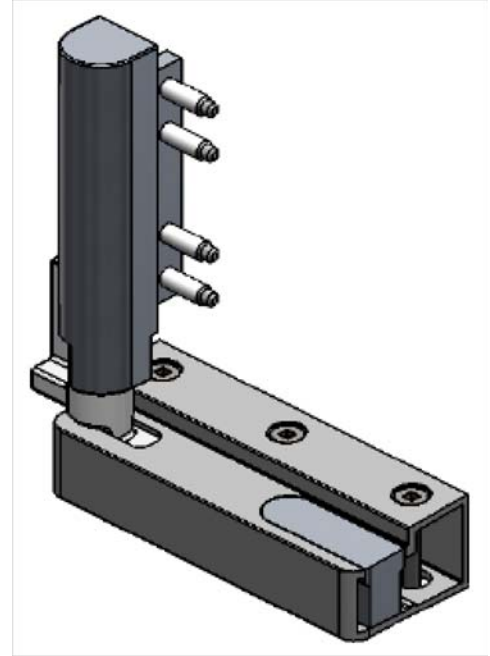
17 **TOP PIVOT**
ASSY-0331



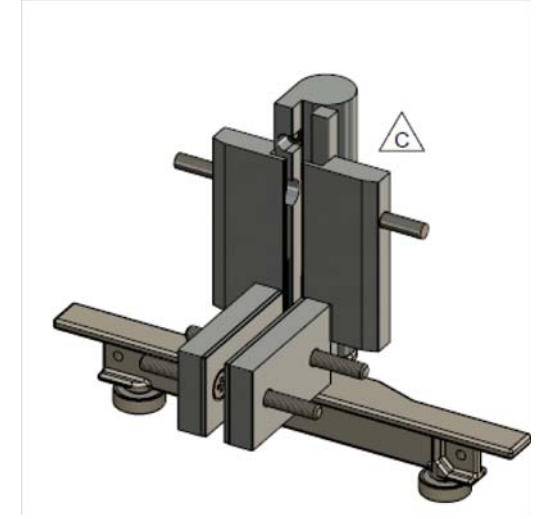
18 **END CARRIER**
ASSY-0332



19 **BOTTOM GUIDE JAMB**
ASSY-0626



20 **BOTTOM LEFT PIVOT**
ASSY-0565



21 **INTERMEDIATE GUIDE**
ASSY-0619

SIGNED: 11/22/2021

CENTOR NORTH AMERICA INC.
966-130 CORPORATE BLVD.
AURORA, IL 60502

200 SERIES/MODEL 205 FOLDING OUTWARD
OPENING DOOR WITH WOOD TRIM - IMPACT
COMPONENTS

DRAWN: A.R.	DWG NO. 08-03431	REV A
SCALE NTS	DATE 05/20/19	SHEET 8 OF 8

L. ROBERTO LOMAS P.E.
1432 WOODFORD RD LEWISVILLE, NC 27023
434-688-0609 rllomas@rlomaspe.com



Luis R. Lomas P.E.
TX No.: 101889