



COMPLEX INDUSTRIES

5768 Distribution Dr.
Memphis, TN 38141

GLAZED IRON DOUBLE DOOR w/ or w/out SIDELITES

INSWING
"NON-IMPACT"

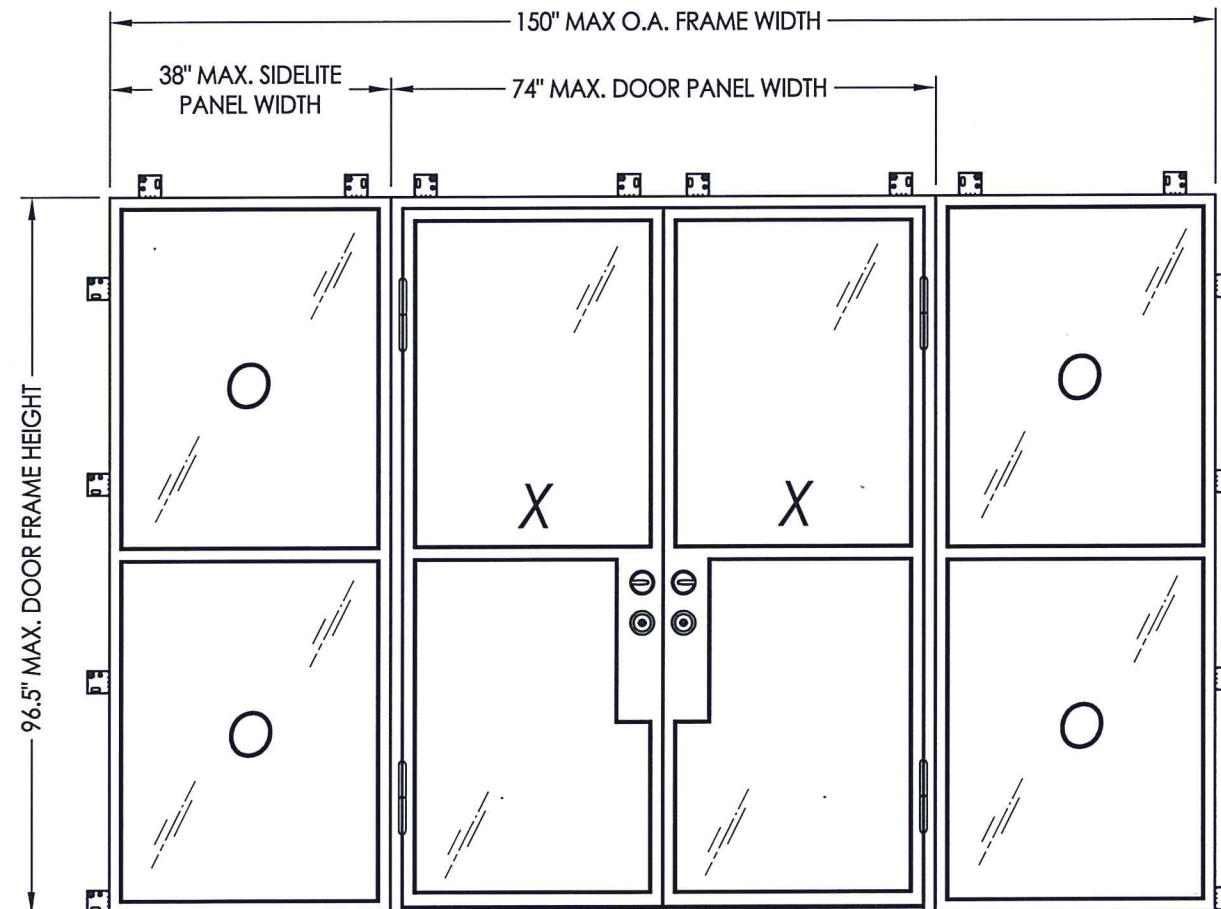
EVALUATED FOR USE IN THE STATE OF TEXAS

The Iron Door system described herein complies with the 2018 International Residential Code (IRC), Sections R301 & R609 and the 2018 International Building Code (IBC), Sections 1404.13, 1609, 1709.5, 2403 and 2404 subject to the following conditions:

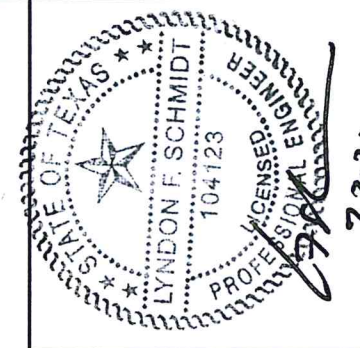
1. Anchors shall be as listed and spaced as shown in the details. Anchor embedment to base material shall be beyond wall dressing or stucco.
2. When used in areas requiring wind-borne debris protection, this system is required to be protected with an impact resistant covering that complies with Section R301.2.1.2 of the IRC and Section 1609.2 of the IBC.
3. Allowable design pressure requirements must be equal to or less than the design pressure rating shown in the design pressure chart, sheet 1 of this drawing.
4. Conditions not covered by this drawing are subject to further engineering analysis.

TABLE OF CONTENTS

SHEET#	DESCRIPTION
1	Typical Elevations, Design Pressures, & General Notes
2	Door Panel Details
3	Sidelite Panel Details
4	Elevations
5	Horizontal Cross Sections
6	Vertical Cross Sections
7	Frame anchoring
8	Bill of materials and components



CONFIGURATION	OVERALL FRAME DIMENSION	DESIGN PRESSURE (PSF)	
		POSITIVE	NEGATIVE
XX	74" x 96.5"	+55.0	-60.0
OXXO	150" x 96.5"	+55.0	-60.0



Documents Prepared By: Lyndon F. Schmidt, P.E.
TEXAS P.E. #104123

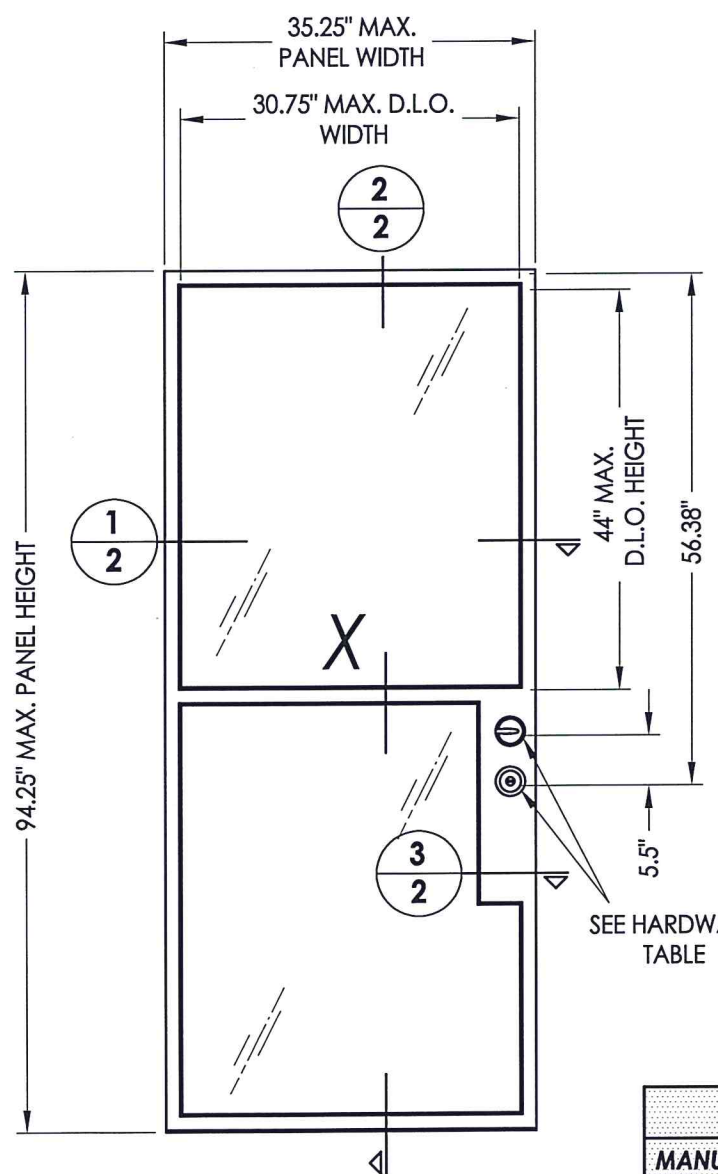
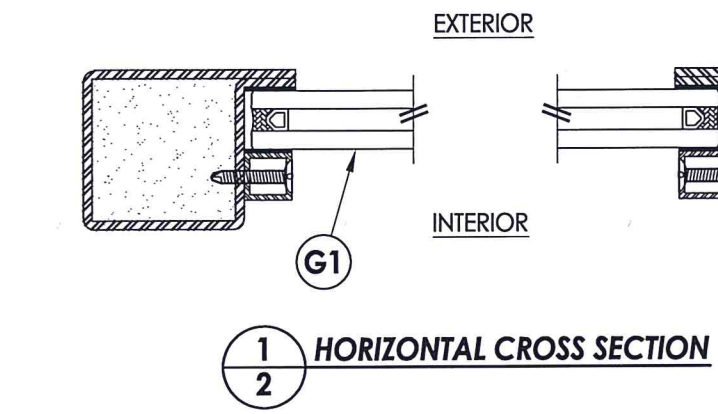
RW BUILDING CONSULTANTS, INC.
P.O. Box 230 Valrico FL 33595
Phone No.: 813.659.9197

TEXAS BOARD OF PROFESSIONAL ENGINEERS
CERTIFICATE OF REGISTRATION # F-11852

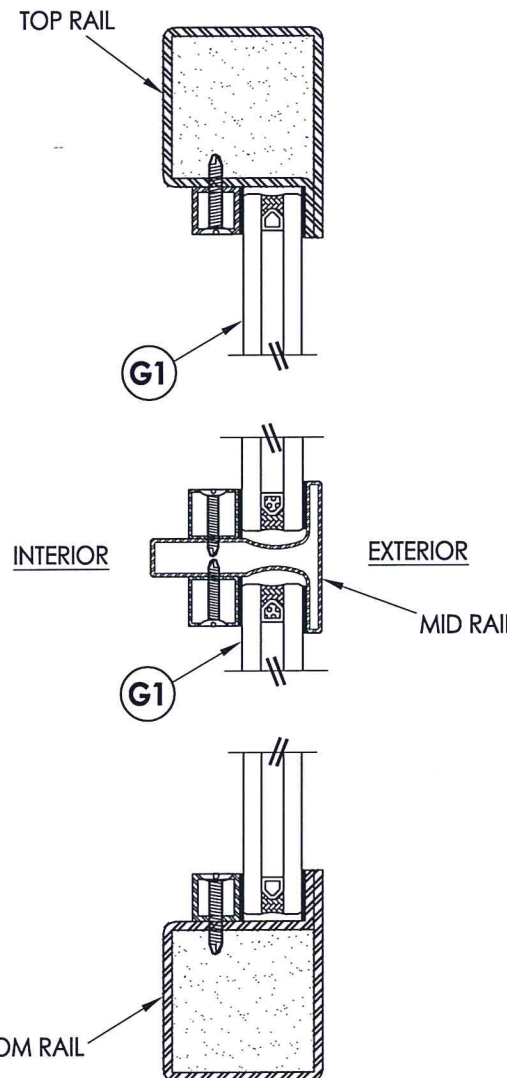
PRODUCT:	COMPLEX INDUSTRIES GLAZED IRON DOOR	
PART OR ASSEMBLY:	TYPICAL ELEVATIONS, DESIGN PRESSURES & GENERAL NOTES	
NO.	DATE	BY
1	7/02/20	LFS
UPDATE TO 2018 IBC/IRC CODE		

DATE: 8/26/19
SCALE: N.T.S.
DWG. BY: TRJ
CHK. BY: LFS
DRAWING NO.: TX-4945
SHEET 1 OF 8

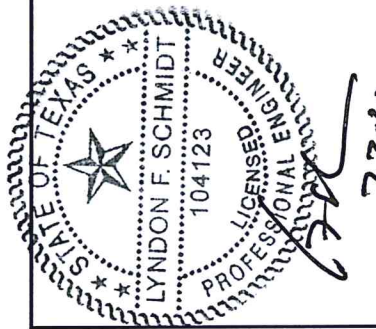
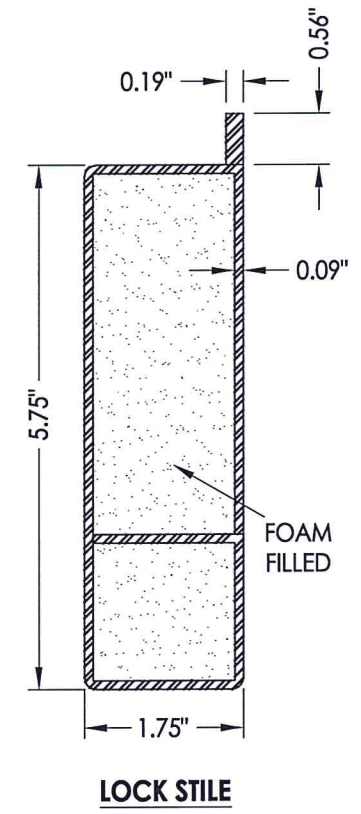
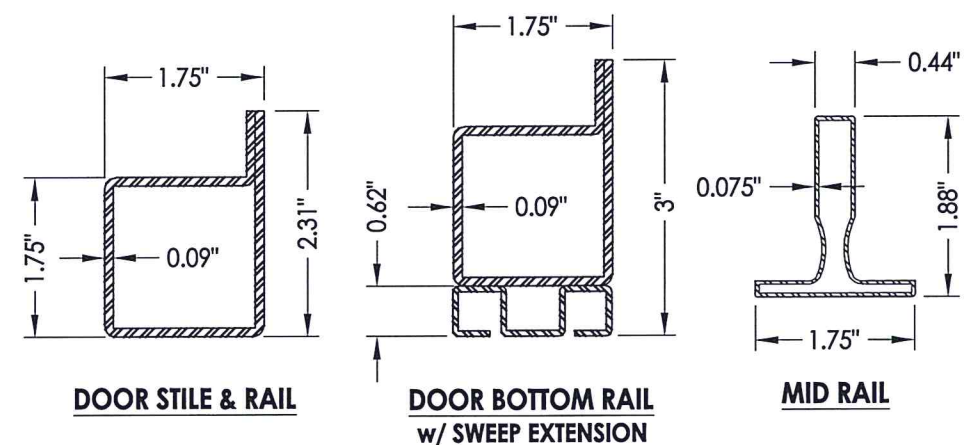
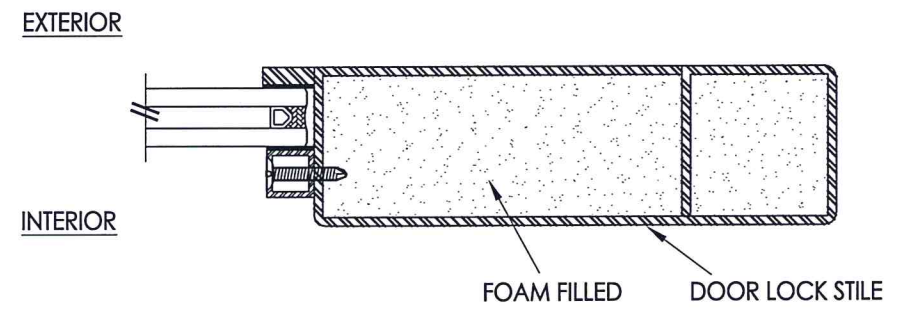
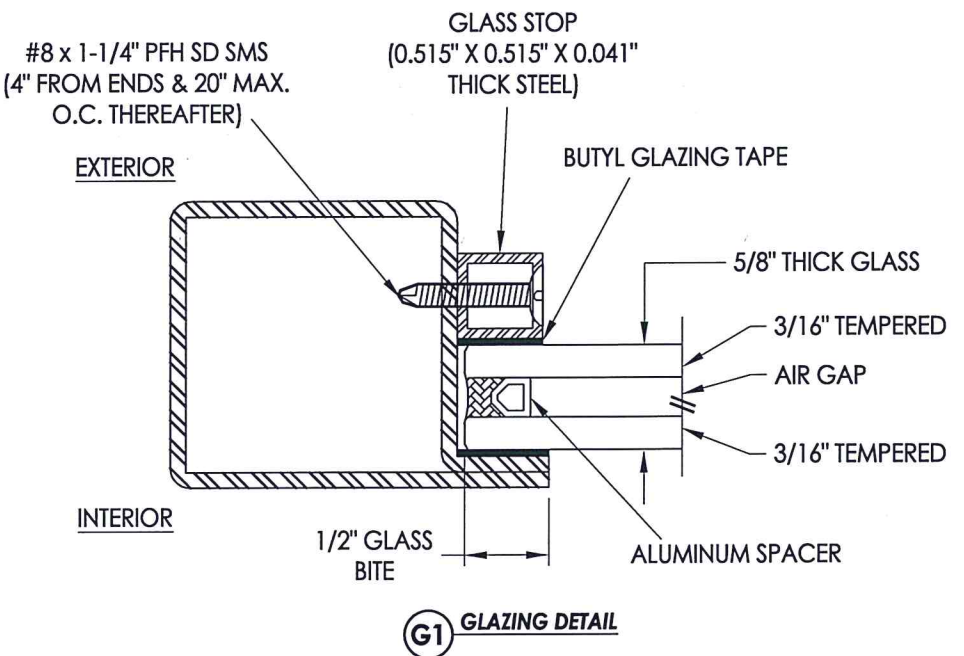
R:\Clients\Complex Industries PERMANENT\B - Texas Dept of Ins\TDI DR-1068 - Narrow Stile Iron Doors wwo Sidelites and Transoms\C - Drawings\TX-4945-4946.dwg, 1.2



40 DOOR PANEL



HARDWARE TABLE	
MANUFACTURER	MODEL
SCHLAGE	Knob: F51
	Deadbolt: B60N
KWIKSET	Knob: SIGNATURE SERIES
	Deadbolt: SIGNATURE SERIES (980)



Documents Prepared By: Lyndon F. Schmidt, P.E.
 TEXAS P.E. #104123

RW BUILDING CONSULTANTS, INC.
 P.O. Box 230 Valrico FL 33595
 Phone No.: 813.659.9197

TEXAS BOARD OF PROFESSIONAL ENGINEERS
 CERTIFICATE OF REGISTRATION # F-11852

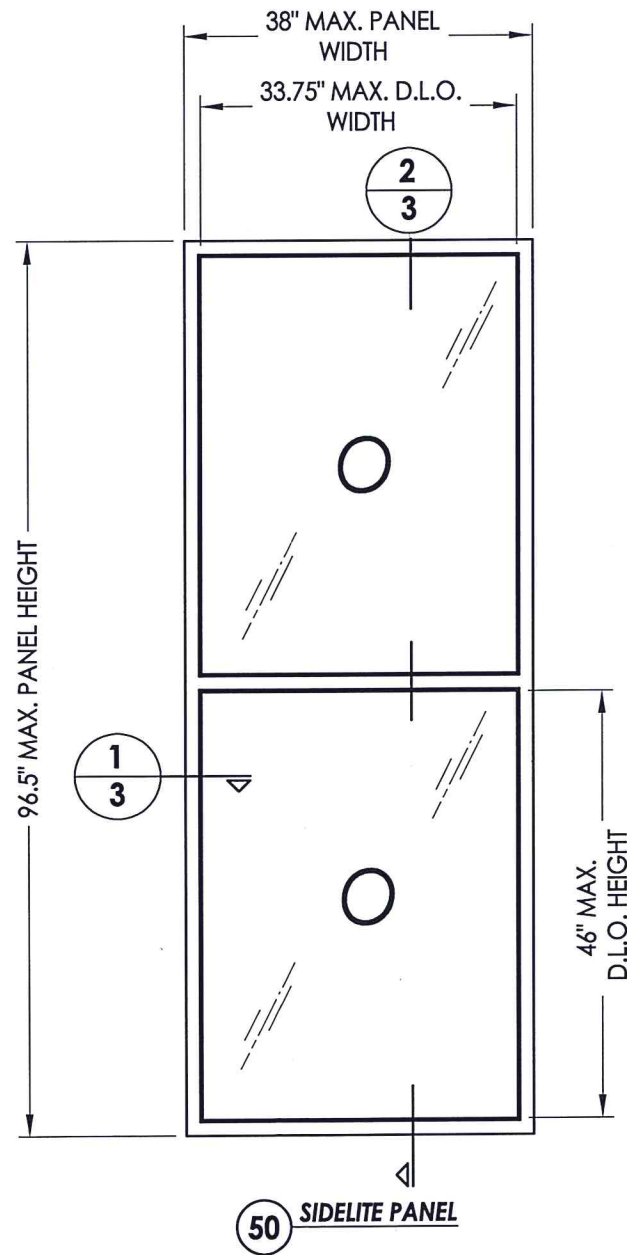
PRODUCT: COMPLEX INDUSTRIES GLAZED IRON DOOR

PART OR ASSEMBLY: DOOR PANEL DETAILS

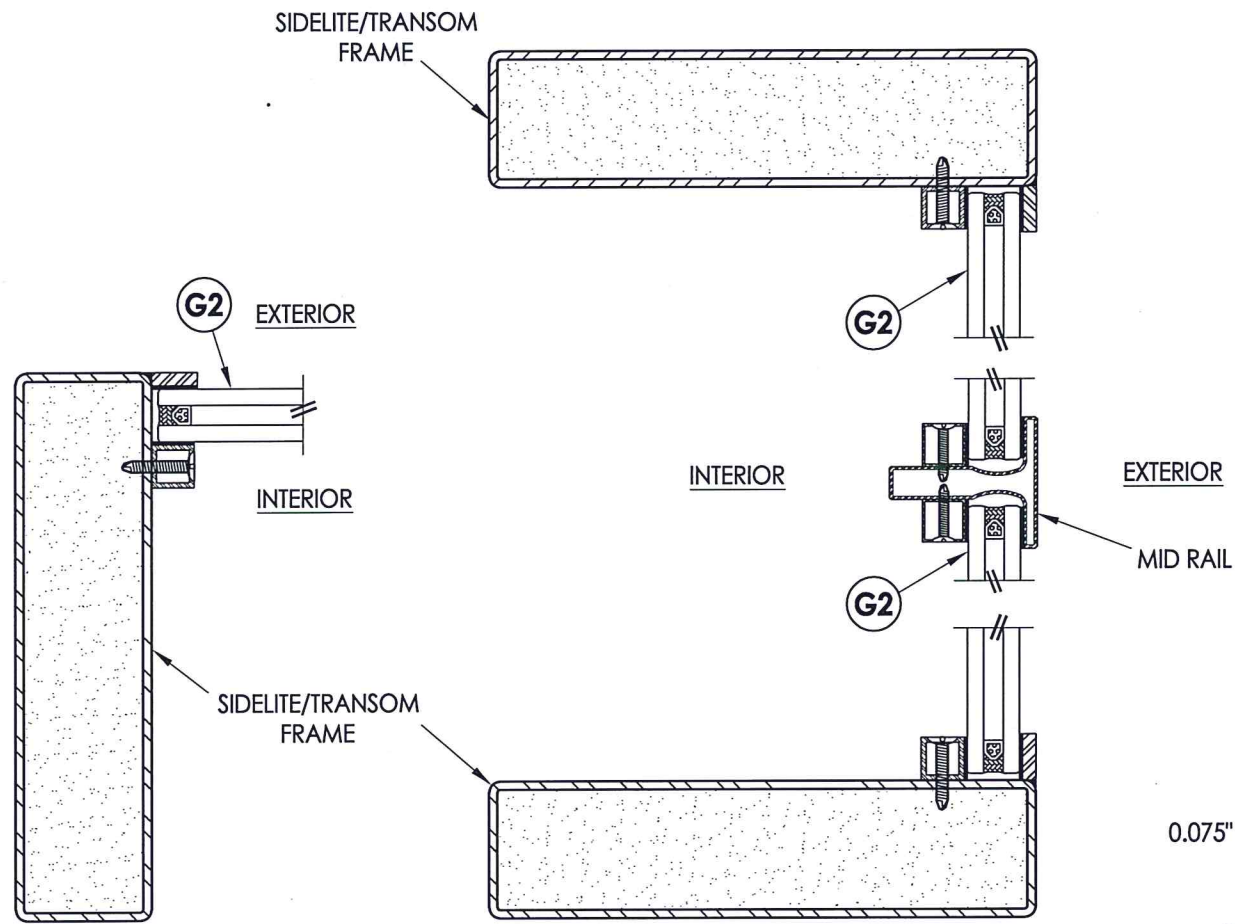
NO.	DATE	DESCRIPTION	BY
1	7/02/20	UPDATE TO 2018 IBC/IRC CODE	LFS

DATE: 8/26/19
 SCALE: N.T.S.
 DWG. BY: TRJ
 CHK. BY: LFS
 DRAWING NO.: TX-4945
 SHEET 2 OF 8

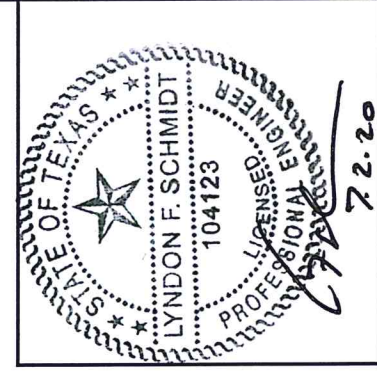
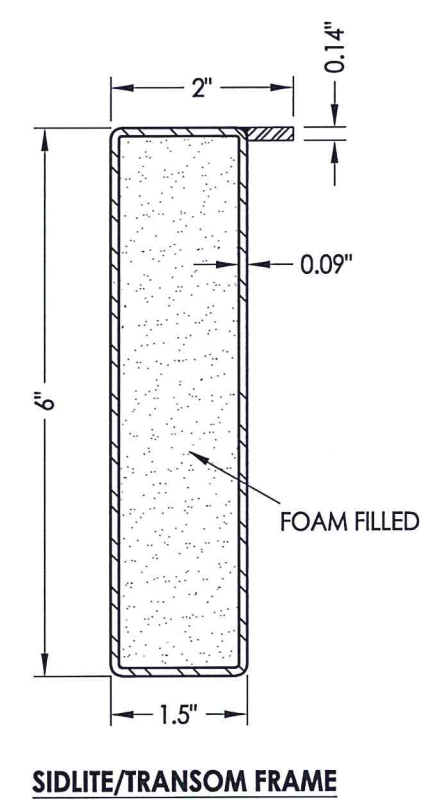
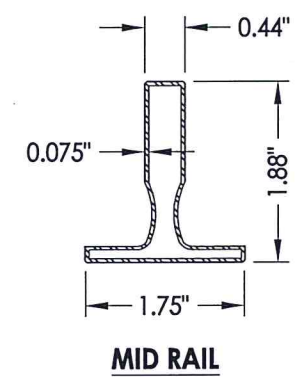
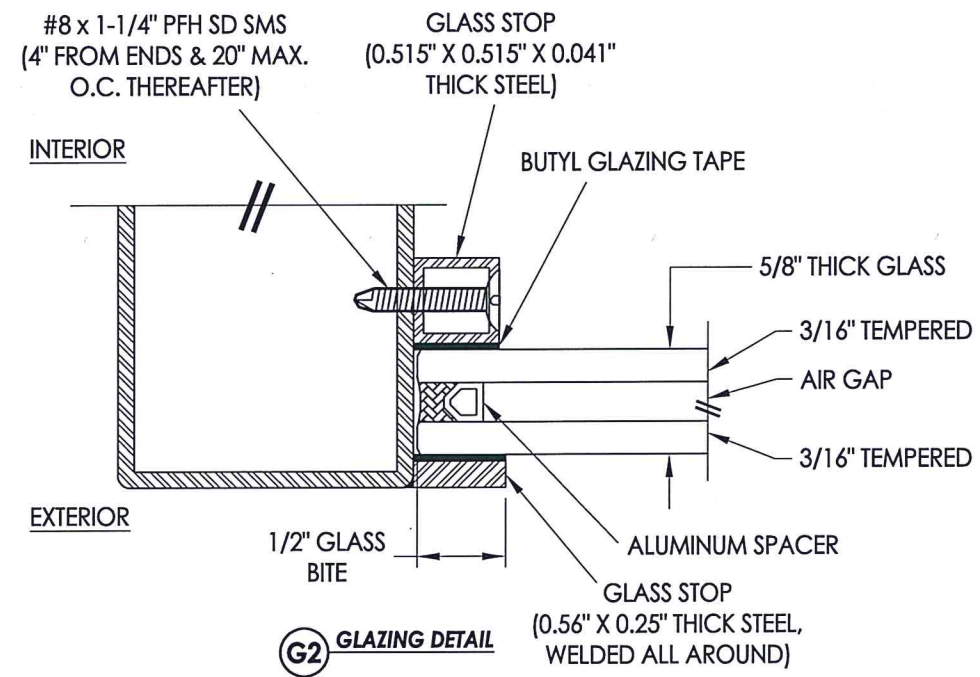
© 2019 R.W. BUILDING CONSULTANTS INC.



1
3 **HORIZONTAL CROSS SECTION**



2
3 **VERTICAL CROSS SECTION**



Documents Prepared By: Lyndon F. Schmidt, P.E.
TEXAS P.E. #104123

RW BUILDING CONSULTANTS, INC.
P.O. Box 230 Valrico FL 33595
Phone No.: 813.659.9197

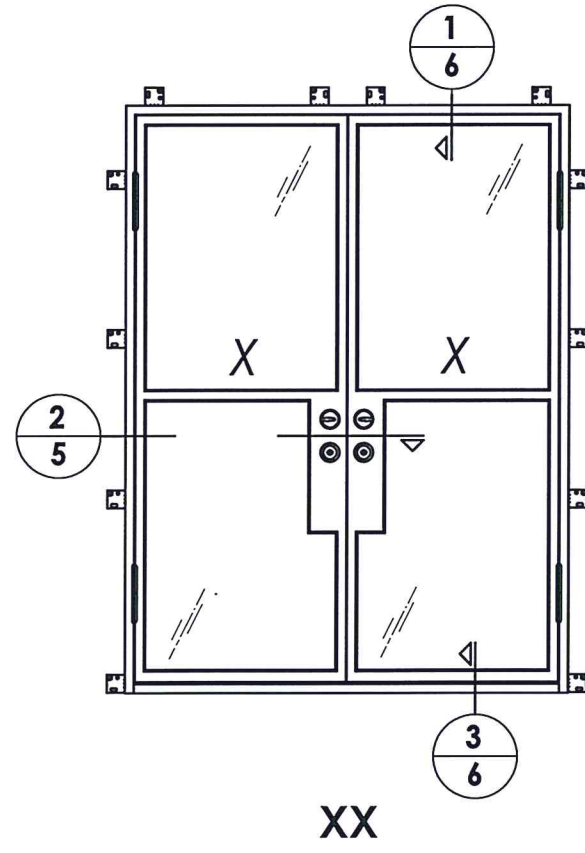
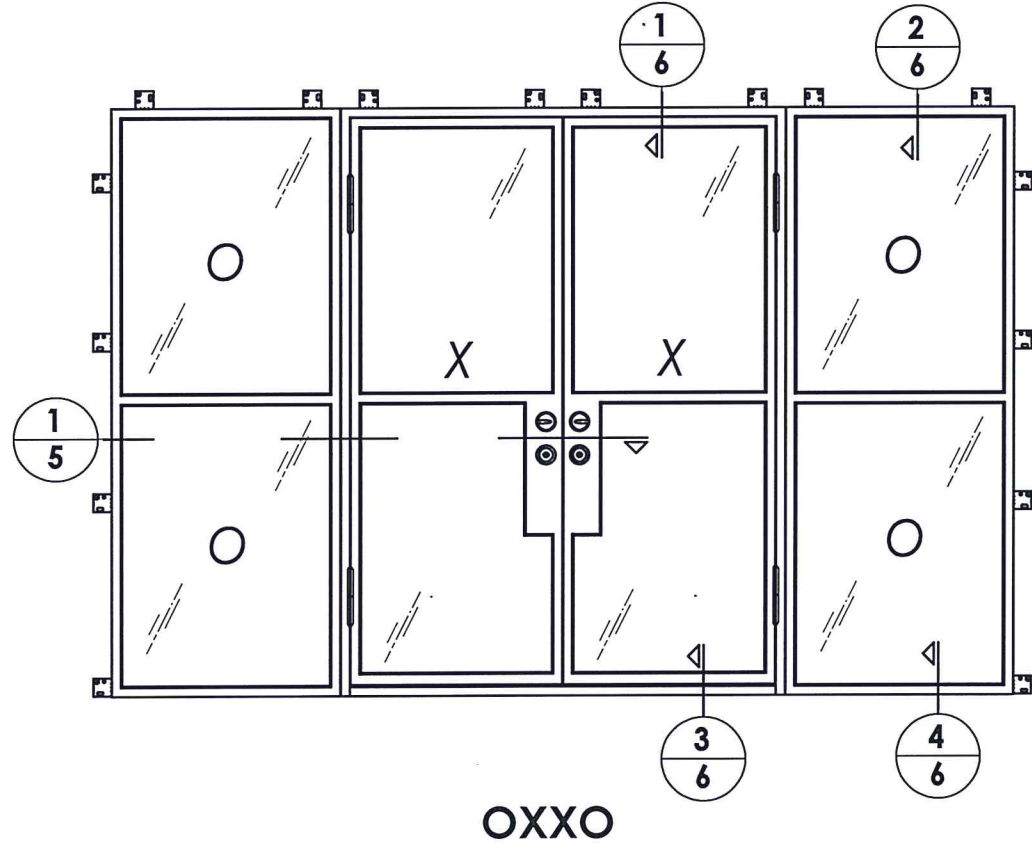
TEXAS BOARD OF PROFESSIONAL ENGINEERS
CERTIFICATE OF REGISTRATION # F-11852

PRODUCT: COMPLEX INDUSTRIES GLAZED IRON DOOR

PART OR ASSEMBLY: SIDELITE & TRANSOM PANEL DETAILS

NO.	DATE	DESCRIPTION	BY
1	7/02/20	UPDATE TO 2018 IBC/IRC CODE	LFS

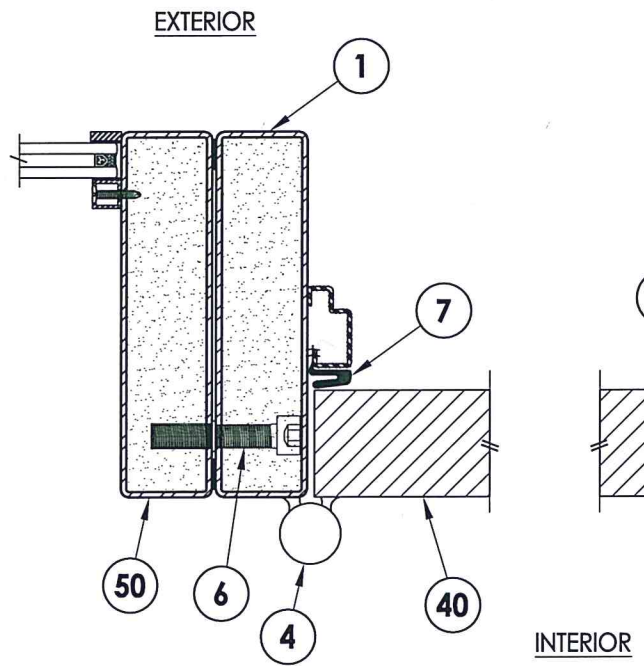
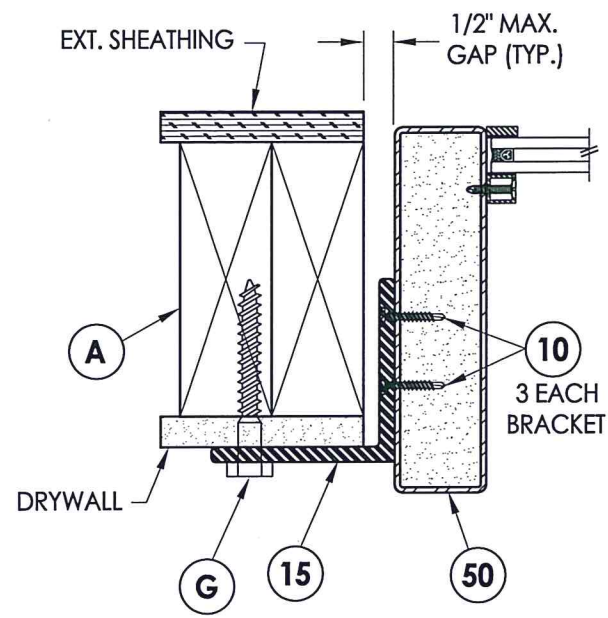
DATE: 8/26/19
SCALE: N.T.S.
DWG. BY: TRJ
CHK. BY: LFS
DRAWING NO.: TX-4945
SHEET 3 OF 8



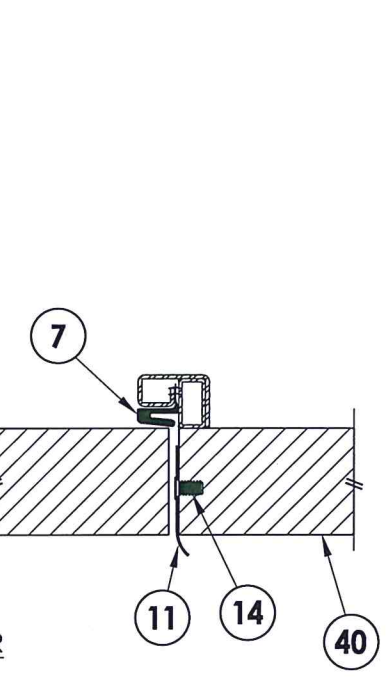
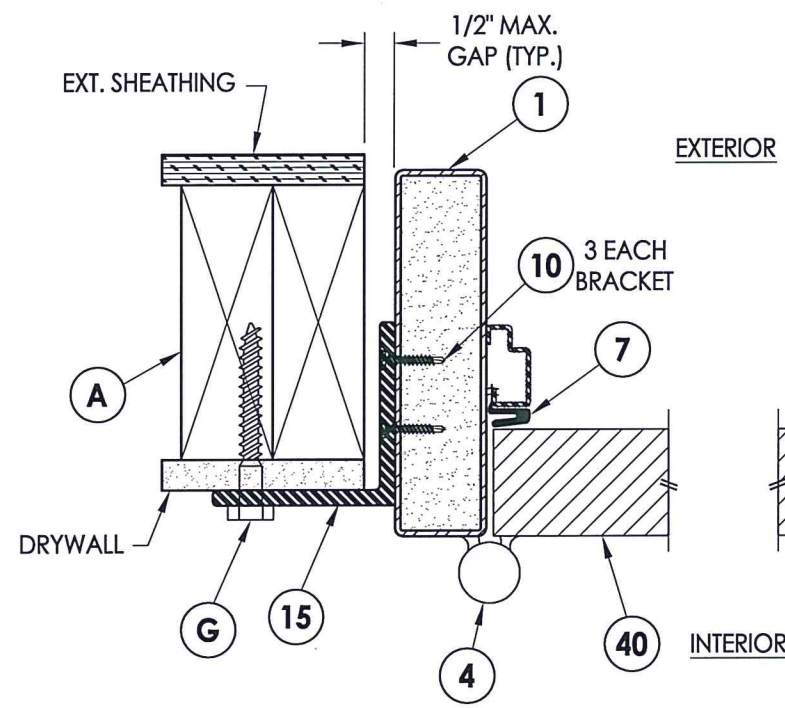
Documents Prepared By: Lyndon F. Schmidt, P.E.
TEXAS P.E. #104123

RW BUILDING CONSULTANTS, INC.
P.O. Box 230 Valrico FL 33595
Phone No.: 813.659.9197
TEXAS BOARD OF PROFESSIONAL ENGINEERS
CERTIFICATE OF REGISTRATION # F-11852

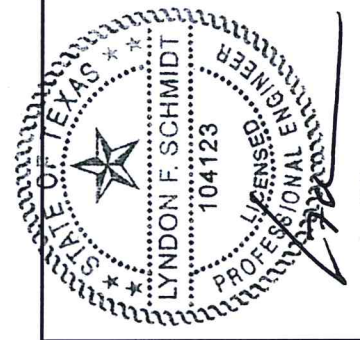
PRODUCT:		COMPLEX INDUSTRIES GLAZED IRON DOOR	
PART OR ASSEMBLY:		ELEVATIONS	
NO.	DATE	DESCRIPTION	BY
1	7/02/20	UPDATE TO 2018 IBC/IRC CODE	LFS
REVISIONS			BY
DATE: 8/26/19			
SCALE: N.T.S.			
DWG. BY: TRJ			
CHK. BY: LFS			
DRAWING NO.: TX-4945			
SHEET 4 OF 8			



1
5 HORIZONTAL CROSS SECTION



2
5 HORIZONTAL CROSS SECTION



Documents Prepared By: Lyndon F. Schmidt, P.E.
TEXAS P.E. #104123

RW BUILDING CONSULTANTS, INC.
P.O. Box 230 Valrico FL, 33595
Phone No.: 813.659.9197

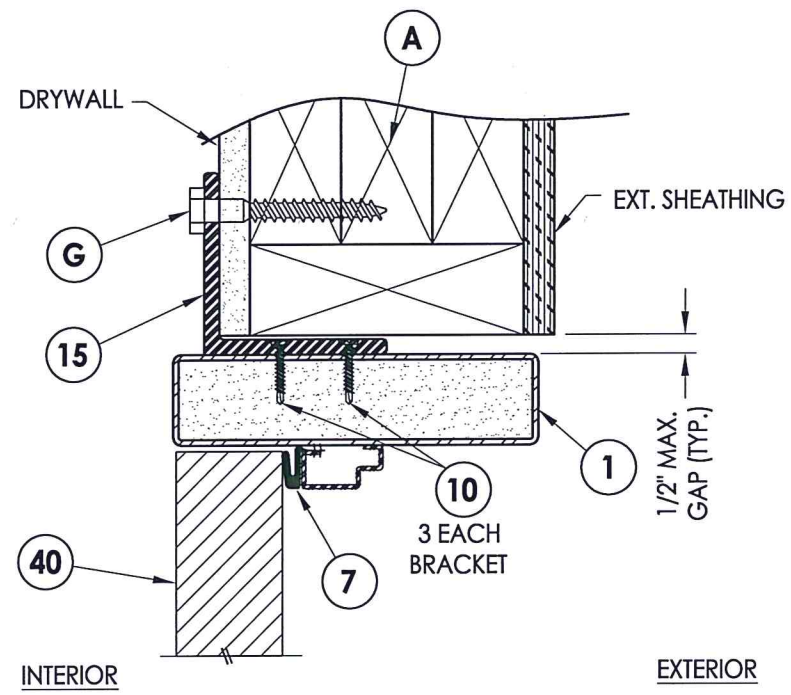
TEXAS BOARD OF PROFESSIONAL ENGINEERS
CERTIFICATE OF REGISTRATION # F-11852

PRODUCT: COMPLEX INDUSTRIES
GLAZED IRON DOOR

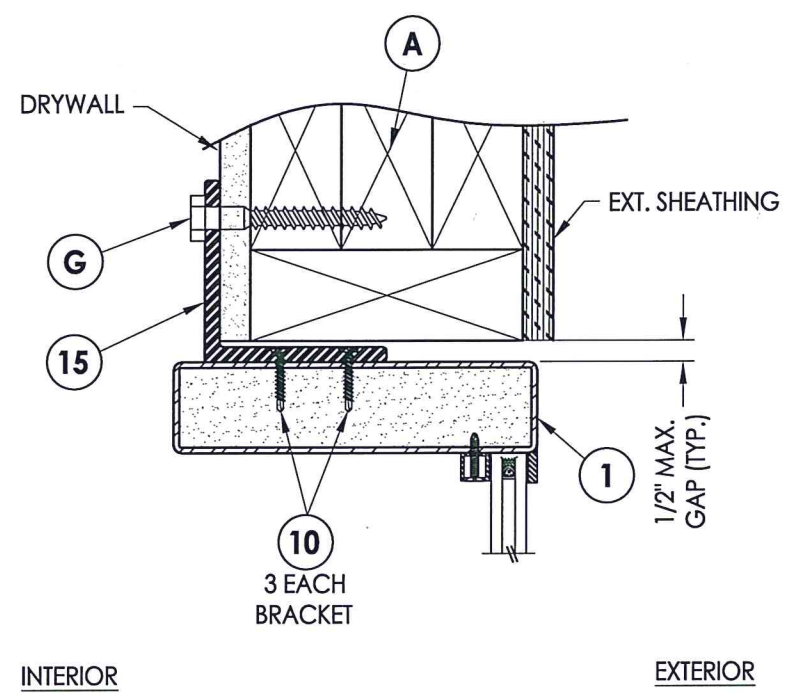
PART OR ASSEMBLY:
HORIZONTAL
CROSS SECTIONS

NO.	DATE	DESCRIPTION	BY
1	7/02/20	UPDATE TO 2018 IBC/IRC CODE	LFS

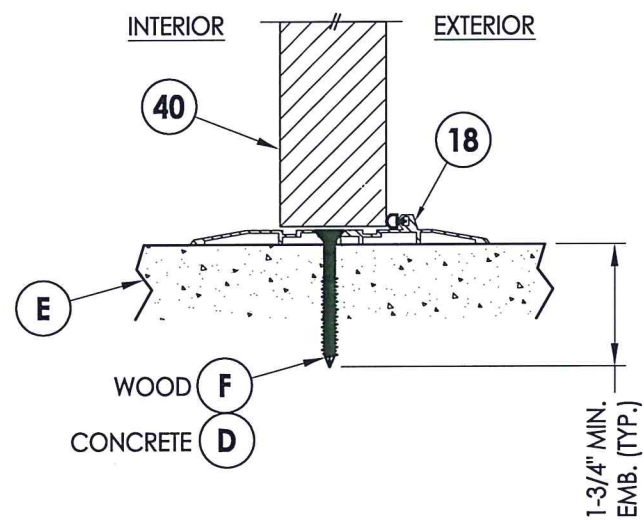
DATE: 8/26/19
SCALE: N.T.S.
DWG. BY: TRJ
CHK. BY: LFS
DRAWING NO.: TX-4945
SHEET 5 OF 8



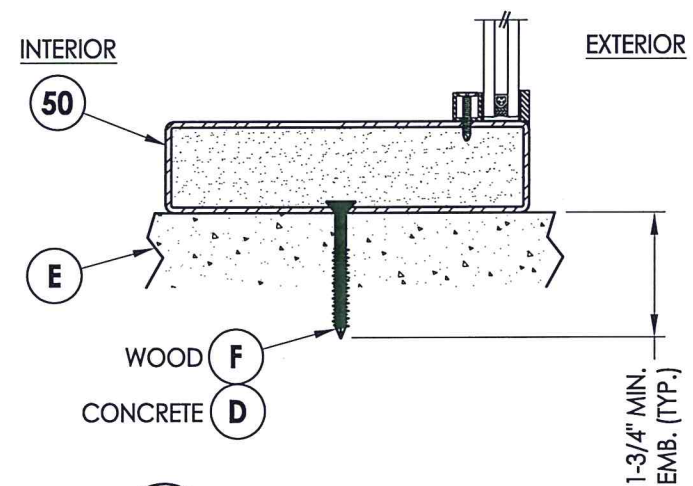
1
6 VERTICAL CROSS SECTION



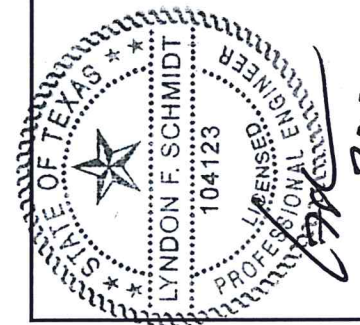
2
6 VERTICAL CROSS SECTION



3
6 VERTICAL CROSS SECTION



4
6 VERTICAL CROSS SECTION



Documents Prepared By: Lyndon F. Schmidt, P.E.
TEXAS P.E. #104123

RW BUILDING CONSULTANTS, INC.
P.O. Box 230 Valrico FL, 33595
Phone No.: 813.659.9197

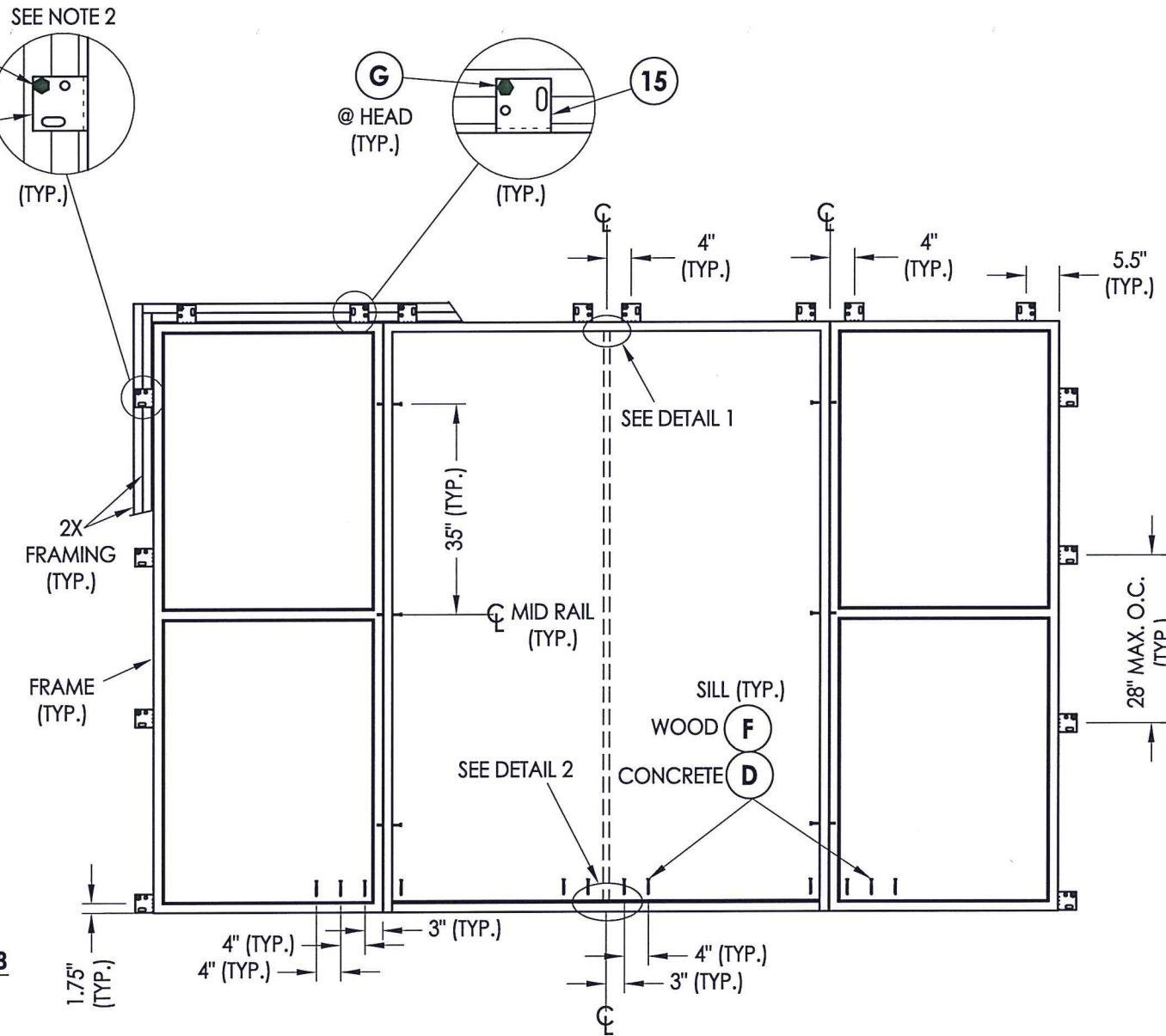
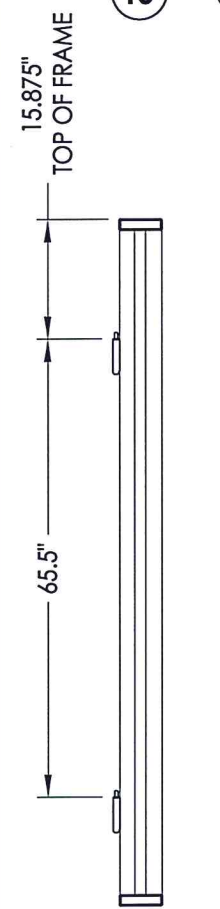
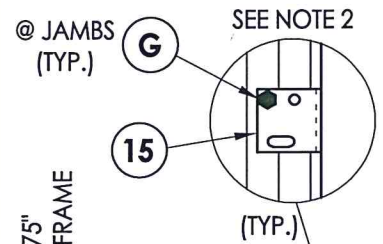
TEXAS BOARD OF PROFESSIONAL ENGINEERS
CERTIFICATE OF REGISTRATION # F-11852

PRODUCT: COMPLEX INDUSTRIES
GLAZED IRON DOOR

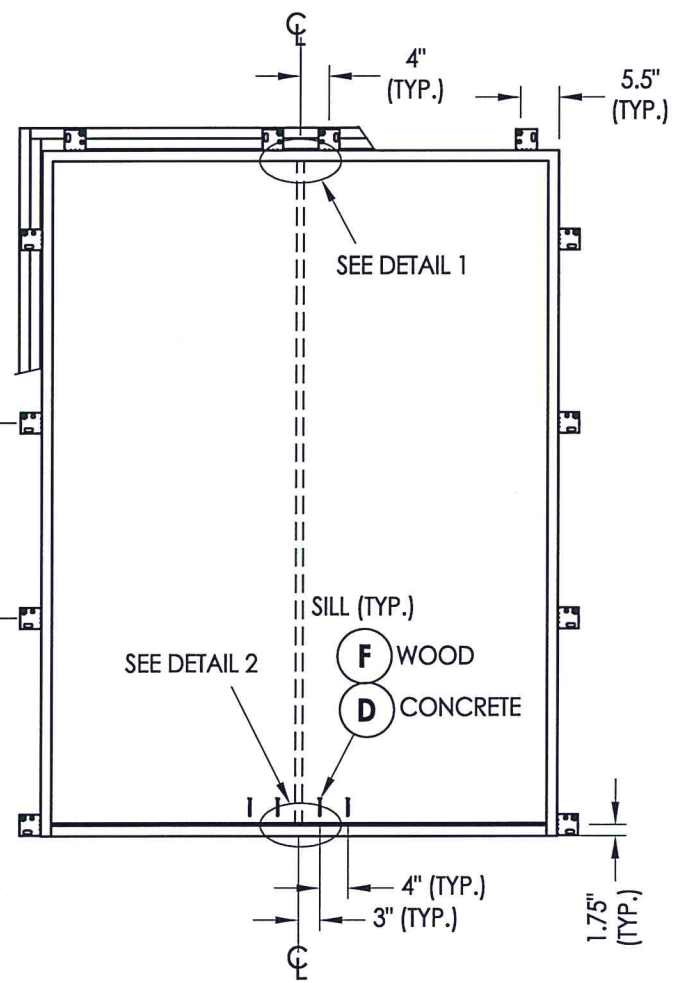
PART OR ASSEMBLY:
VERTICAL
CROSS SECTIONS

NO.	DATE	DESCRIPTION	BY
1	7/02/20	UPDATE TO 2018 IBC/IRC CODE	LFS

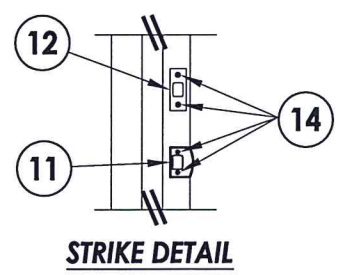
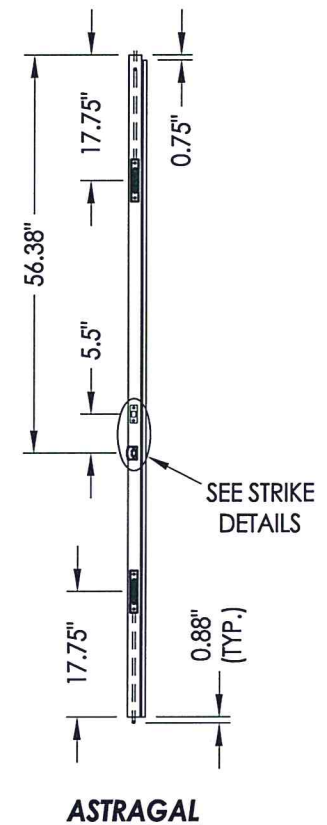
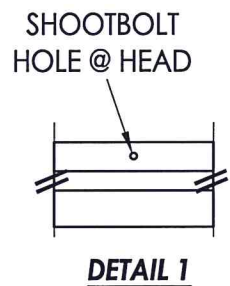
DATE: 8/26/19
SCALE: N.T.S.
DWG. BY: TRJ
CHK. BY: LFS
DRAWING NO.: TX-4945
SHEET 6 OF 8



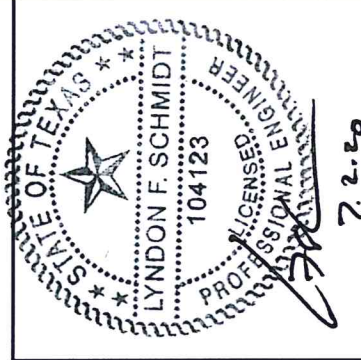
FRAME ANCHORING
OOO
OXXO



FRAME ANCHORING
OOO
XX



- NOTES:**
- Item 6 is located at the centerline of each transom sash and along door frame where indicated.
 - Brackets located at the top & bottom of both jambs are welded to the frame, all others are screwed on.



Documents Prepared By: Lyndon F. Schmidt, P.E.
TEXAS P.E. #104123

RW BUILDING CONSULTANTS, INC.
P.O. Box 230 Valrico FL 33595
Phone No.: 813.659.9197

TEXAS BOARD OF PROFESSIONAL ENGINEERS
CERTIFICATE OF REGISTRATION # F-11852

PRODUCT: COMPLEX INDUSTRIES GLAZED IRON DOOR

PART OR ASSEMBLY: FRAME ANCHORING

NO.	DATE	DESCRIPTION	LFS	BY
1	7/02/20	UPDATE TO 2018 IBC/IRC CODE	LFS	BY

DATE: 8/26/19

SCALE: N.T.S.

DWG. BY: TRJ

CHK. BY: LFS

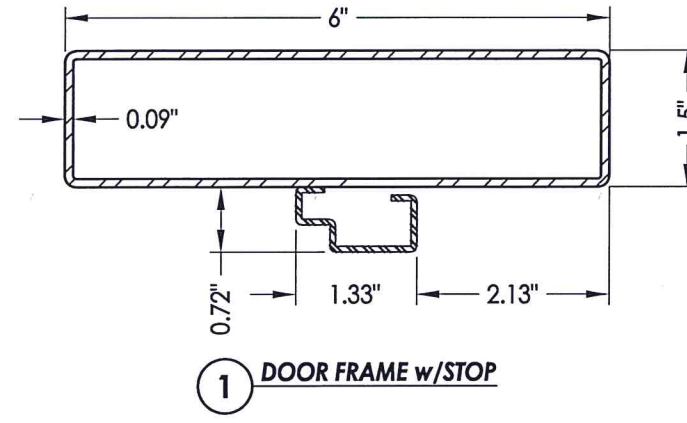
DRAWING NO.: TX-4945

SHEET 7 OF 8

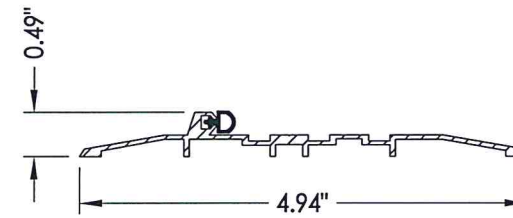
BILL OF MATERIALS

ITEM #	DESCRIPTION	MATERIAL
A	2X FRAMING (SG >= 0.42)	WOOD
C	1/4" MAX. SHIM	-
D	1/4" PFH ELCO OR ITW CONCRETE SCREW (1.5" MIN. EMBEDMENT)	STEEL
F	#10 PFH WOOD SCREW (1.5" MIN. EMBEDMENT)	STEEL
G	3/8" X 3" HWH LAG SCREW (2.75" MIN. EMBEDMENT)	STEEL
1	DOOR FRAME w/ STOP	STEEL
4	DOOR HINGE	STEEL
6	10mm X 25mm X 1.50 CAP HEAD SCREW w/ 10mm X 1.50 THREAD INSERT	STEEL
7	WEATHERSTRIP	FOAM
10	#8 X 1" PPH SELF-DRILLING SMS	STEEL
11	LATCH STRIKE PLATE	STEEL
12	DEADBOLT STRIKE PLATE	STEEL
14	#8-32 X 1/2" PFH MACHINE SCREW	STEEL
15	ANCHORING BRACKET	STEEL
18	ADA INSWING THRESHOLD	ALUM
40	DOOR PANEL	STEEL
50	SIDELITE PANEL	STEEL

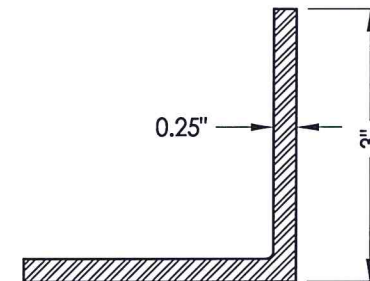
NOTE: ALL DOOR FRAME TUBULAR STEEL SHALL BE ASTM A36 STEEL



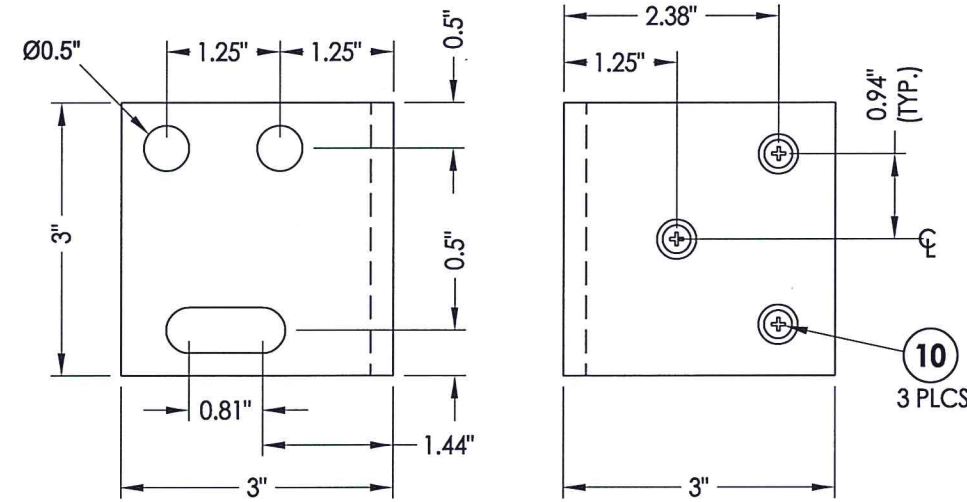
1 DOOR FRAME w/STOP



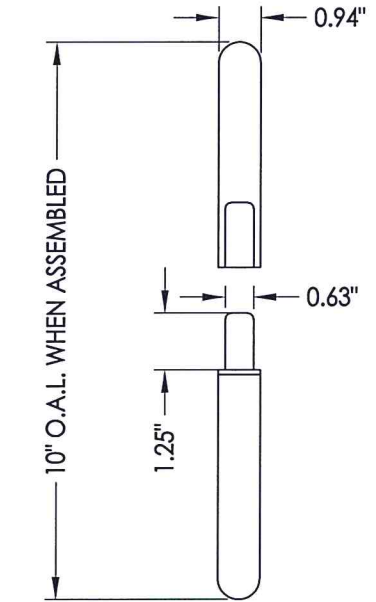
18 ADA INSWING THRESHOLD



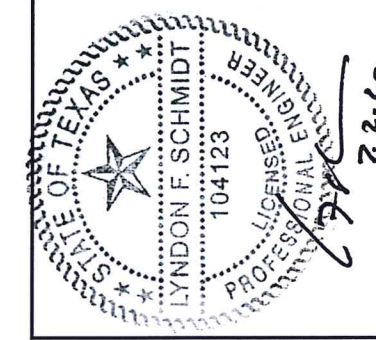
4 DOOR HINGE



15 ANCHORING BRACKET



4 DOOR HINGE



Documents Prepared By: Lyndon F. Schmidt, P.E.
TEXAS P.E. #104123

RW BUILDING CONSULTANTS, INC.
P.O. Box 230 Valrico FL, 33595
Phone No.: 813.659.9197

TEXAS BOARD OF PROFESSIONAL ENGINEERS
CERTIFICATE OF REGISTRATION # F-11852

PRODUCT: COMPLEX INDUSTRIES GLAZED IRON DOOR

PART OR ASSEMBLY: BILL OF MATERIALS AND COMPONENTS

NO.	DATE	DESCRIPTION	BY
1	7/02/20	UPDATE TO 2018 IBC/IRC CODE	LFS

DATE: 8/26/19
SCALE: N.T.S.
DWG. BY: TRJ
CHK. BY: LFS
DRAWING NO.: TX-4945
SHEET 8 OF 8

CONCRETE ANCHOR NOTES:

- Concrete anchor locations at the corners may be adjusted to maintain the min. edge distance to mortar joints.
- Concrete anchor locations noted as "MAX. ON CENTER" must be adjusted to maintain the min. edge distance to mortar joints, additional concrete anchors may be required to ensure the "MAX. ON CENTER" dimension are not exceeded.
- Concrete anchor table:

ANCHOR TYPE	ANCHOR SIZE	MIN. EMBEDMENT	MIN. CLEARANCE TO MASONRY EDGE	MIN. CLEARANCE TO ADJACENT ANCHOR
ITW BUILDEX TAPCON®	1/4"	1-3/4"	1-1/2"	4"
ELCO ULTRACON®	1/4"	1-3/4"	2-1/2"	4"