

GLAZED IRON SINGLE DOOR w/ TRANSOM w/ or w/out SIDELITES

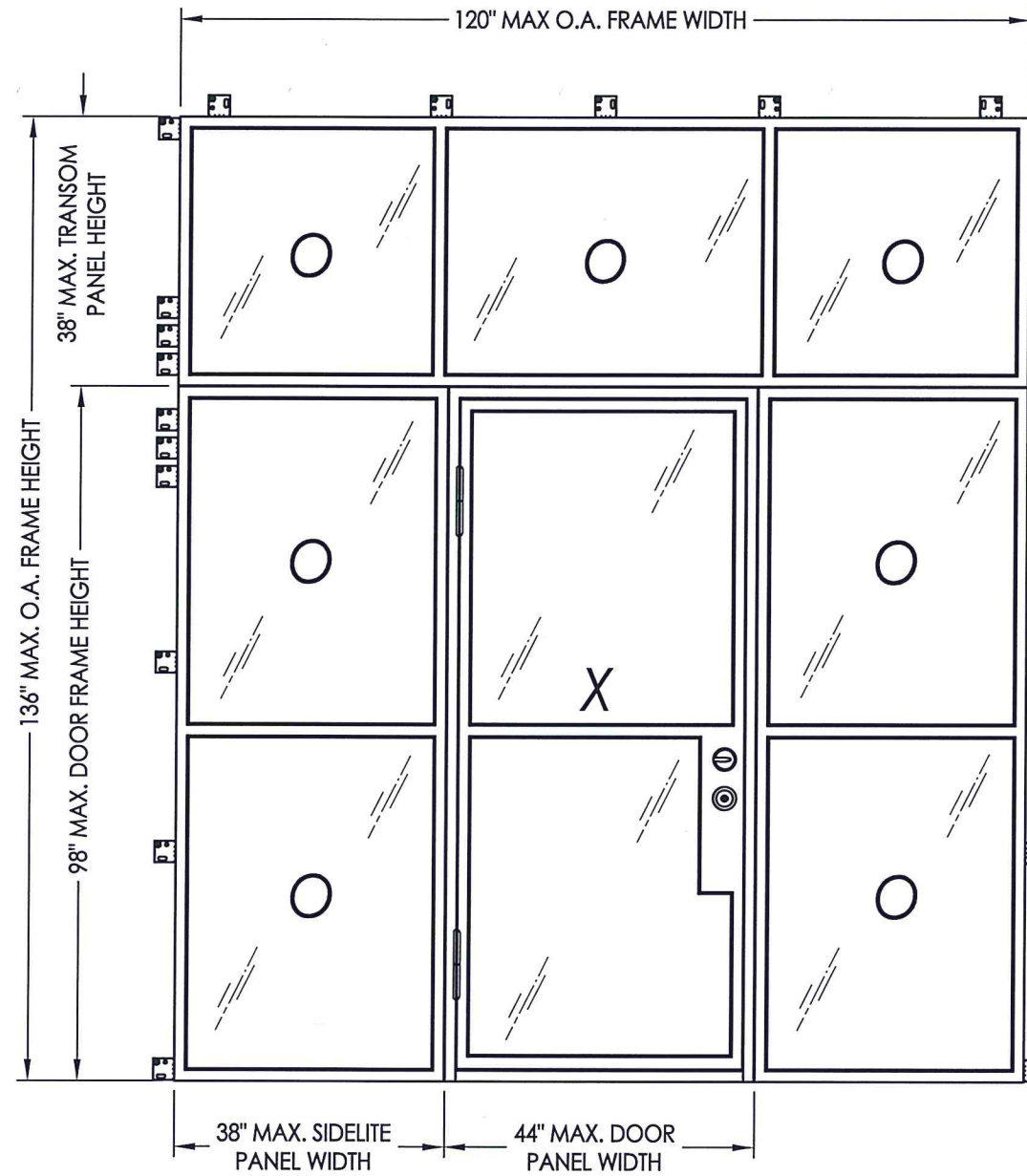
**INSWING
 "NON-IMPACT"**

EVALUATED FOR USE IN THE STATE OF TEXAS

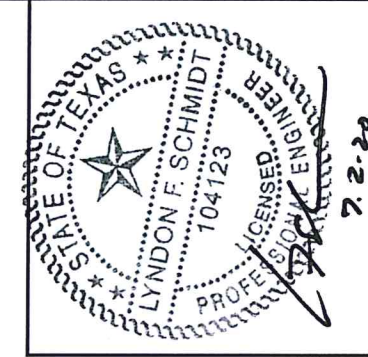
The Iron Door system described herein complies with the 2018 International Residential Code (IRC), Sections R301 & R609 and the 2018 International Building Code (IBC), Sections 1404.13, 1609, 1709.5, 2403 and 2404 subject to the following conditions:

1. Anchors shall be as listed and spaced as shown in the details. Anchor embedment to base material shall be beyond wall dressing or stucco.
2. When used in areas requiring wind-borne debris protection, this system is required to be protected with an impact resistant covering that complies with Section R301.2.1.2 of the IRC and Section 1609.2 of the IBC.
3. Allowable design pressure requirements must be equal to or less than the design pressure rating shown in the design pressure chart, sheet 1 of this drawing.
4. Conditions not covered by this drawing are subject to further engineering analysis.

TABLE OF CONTENTS	
SHEET#	DESCRIPTION
1	Typical Elevations, Design Pressures, & General Notes
2	Door Panel Details
3	Sidelite & Transom Panel Details
4	Elevations
5	Horizontal Cross Sections
6	Vertical Cross Sections
7	Frame anchoring
8	Bill of materials and components



CONFIGURATION	OVERALL FRAME DIMENSION	DESIGN PRESSURE (PSF)	
		POSITIVE	NEGATIVE
O X	44" x 136"	+55.0	-60.0
OO XO or XO	82" x 136"	+55.0	-60.0
OOO OXO	120" x 136"	+55.0	-60.0

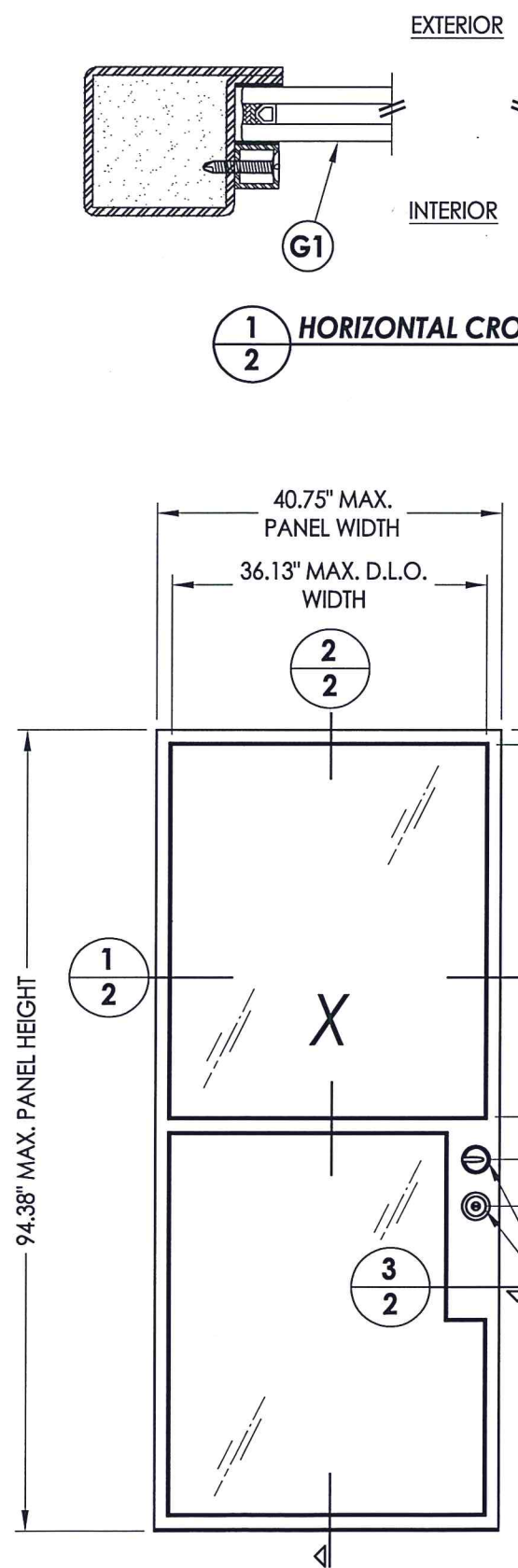


Documents Prepared By: Lyndon F. Schmidt, P.E.
 TEXAS P.E. #104123

RW BUILDING CONSULTANTS, INC.
 P.O. Box 230 Valrico FL 33595
 Phone No.: 813.659.9197

TEXAS BOARD OF PROFESSIONAL ENGINEERS
 CERTIFICATE OF REGISTRATION # F-11852

PRODUCT:	COMPLEX INDUSTRIES GLAZED IRON DOOR
PART OR ASSEMBLY:	TYPICAL ELEVATIONS, DESIGN PRESSURES & GENERAL NOTES
DATE:	8/26/19
SCALE:	N.T.S.
DWG. BY:	TRJ
CHK. BY:	LFS
DRAWING NO.:	TX-4944
SHEET	1 OF 8



1 HORIZONTAL CROSS SECTION

1
2

2
2

1
2

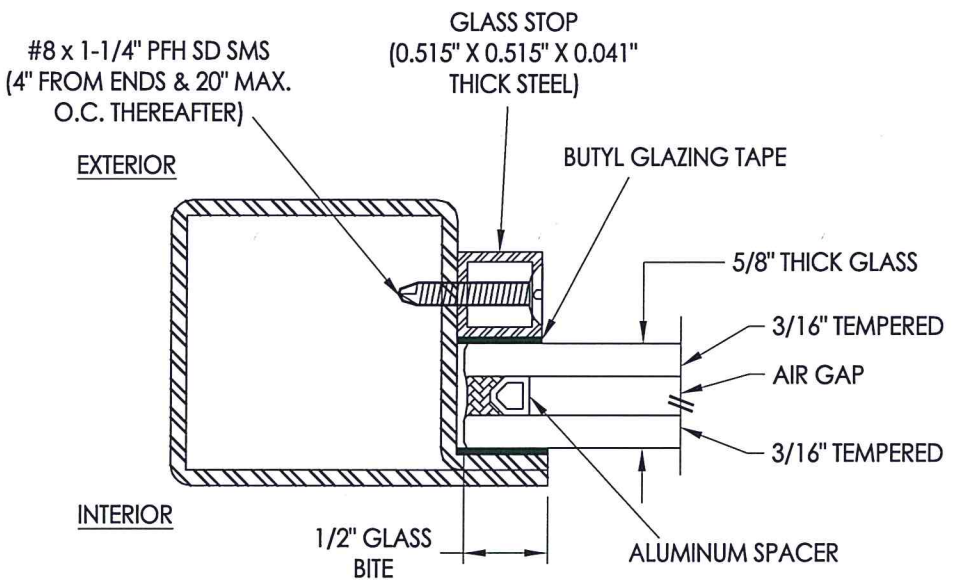
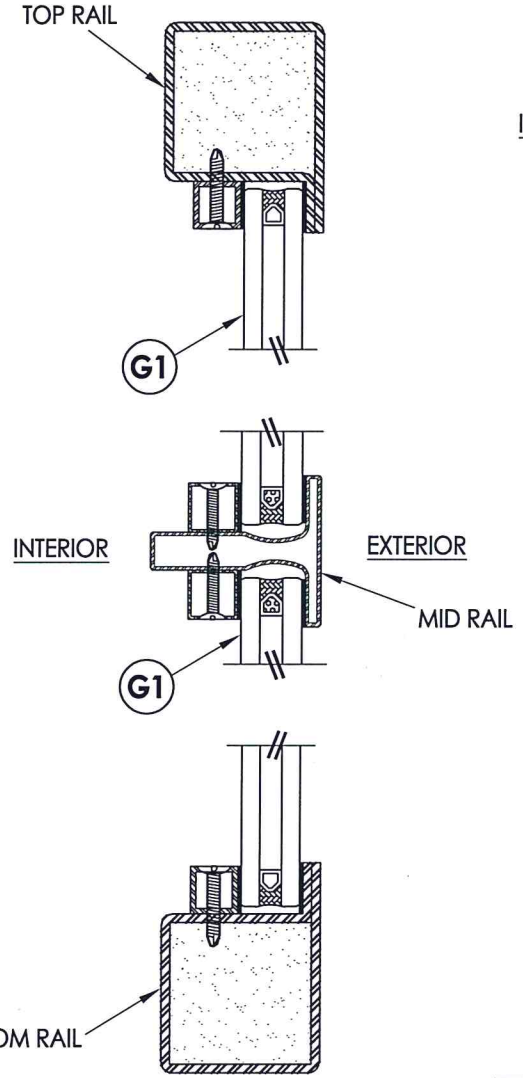
3
2

40 DOOR PANEL

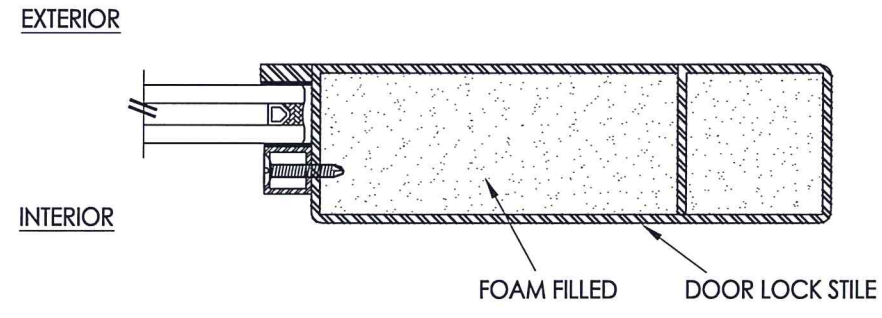
HARDWARE TABLE	
MANUFACTURER	MODEL
SCHLAGE	KNOB: F51
	DEADBOLT: B60N
KWIKSET	KNOB: SIGNATURE SERIES
	DEADBOLT: SIGNATURE SERIES (980)

2 VERTICAL CROSS SECTION

2
2

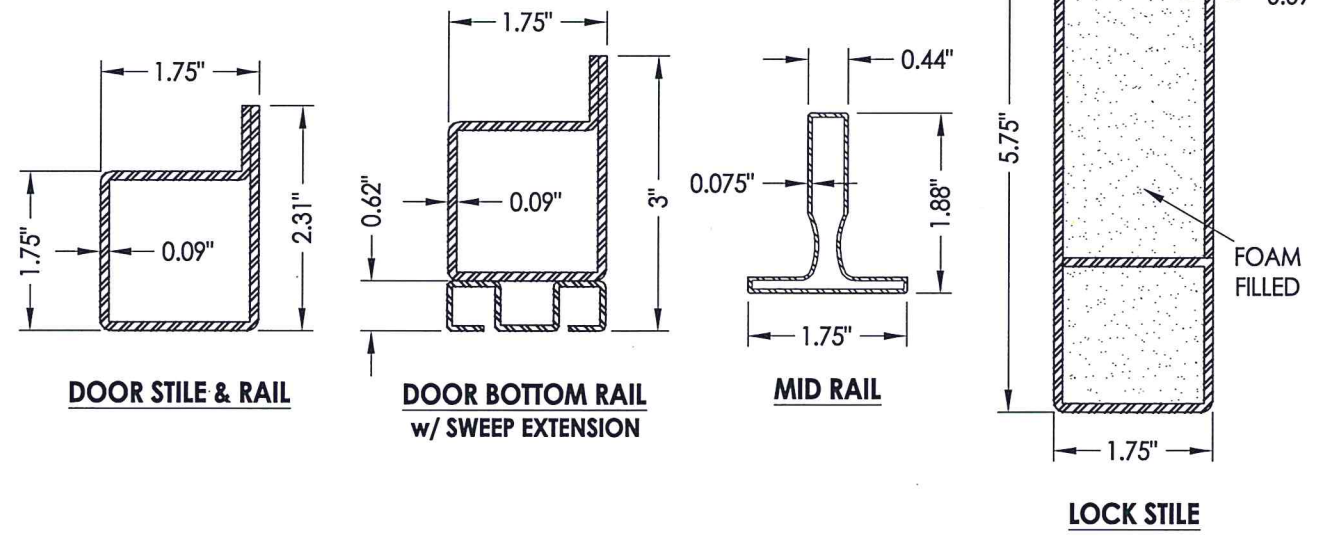


G1 GLAZING DETAIL



3 HORIZONTAL CROSS SECTION

3
2



Documents Prepared By: Lyndon F. Schmidt, P.E.
TEXAS P.E. #104123

RW BUILDING CONSULTANTS, INC.
P.O. Box 230 Valrico FL 33595
Phone No.: 813.659.9197

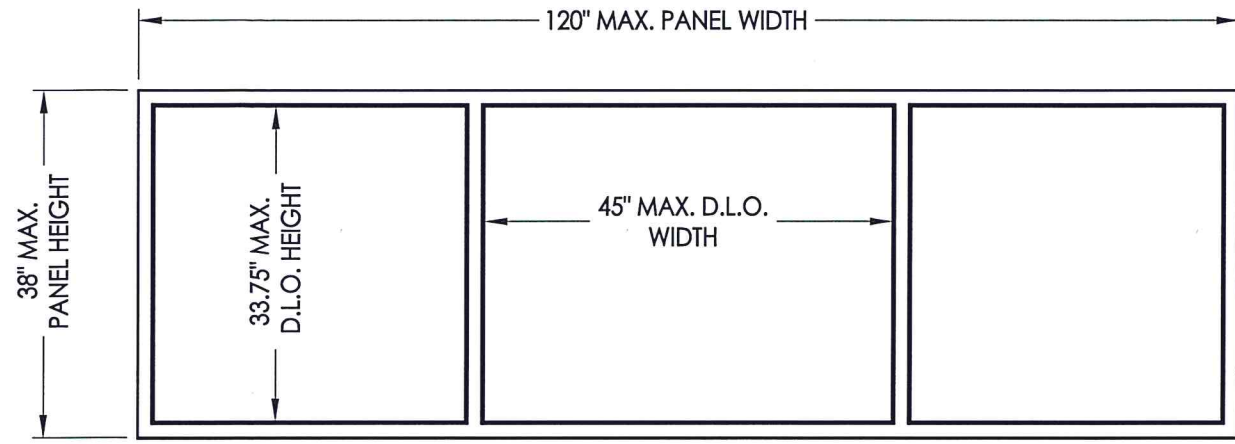
TEXAS BOARD OF PROFESSIONAL ENGINEERS
CERTIFICATE OF REGISTRATION # F-11852

PRODUCT: COMPLEX INDUSTRIES GLAZED IRON DOOR

PART OR ASSEMBLY: DOOR PANEL DETAILS

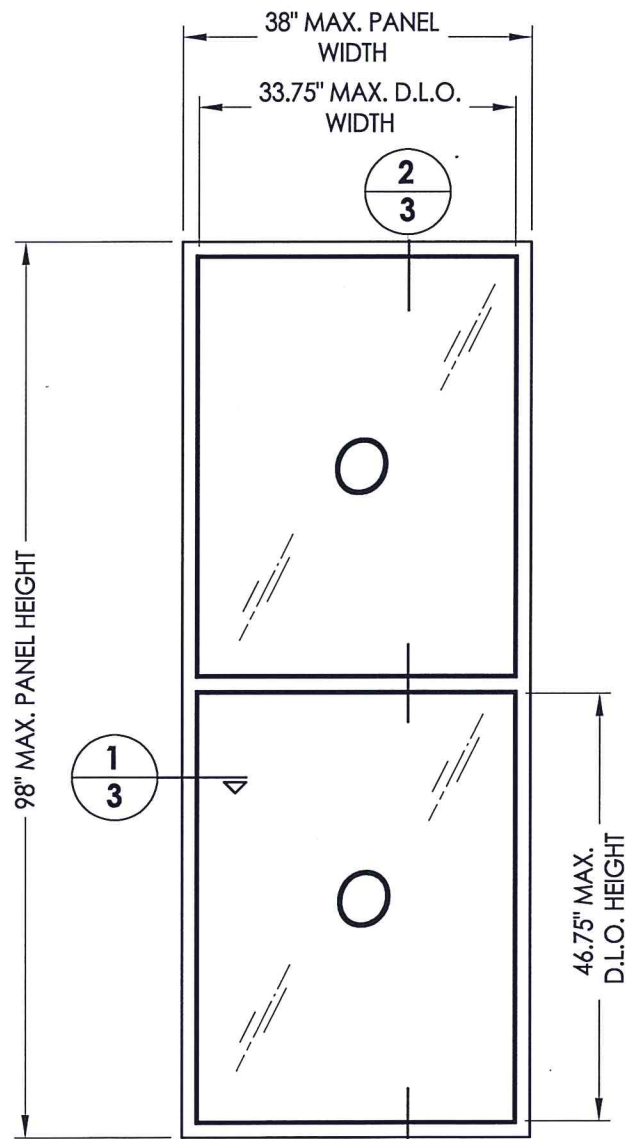
NO.	DATE	DESCRIPTION	BY
1	7/02/20	UPDATE TO 2018 IBC/IRC CODE	LFS

DATE: 8/26/19
SCALE: N.T.S.
DWG. BY: TRJ
CHK. BY: LFS
DRAWING NO.: TX-4944
SHEET 2 OF 8



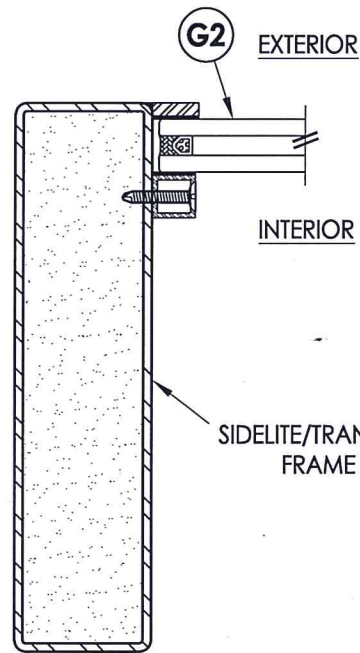
60 TRANSOM PANEL

NOTE: SIDELITE CROSS SECTIONS SHOWN
(TRANSOM CROSS SECTIONS SIMILAR)

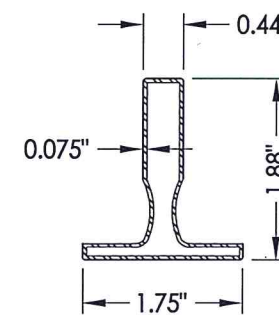
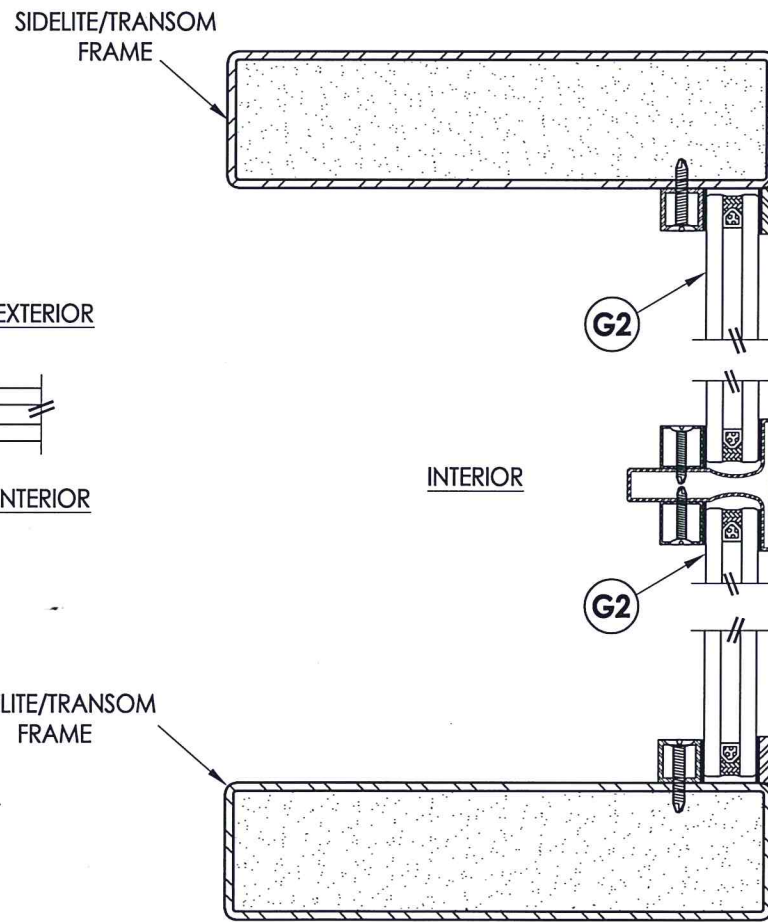


50 SIDELITE PANEL

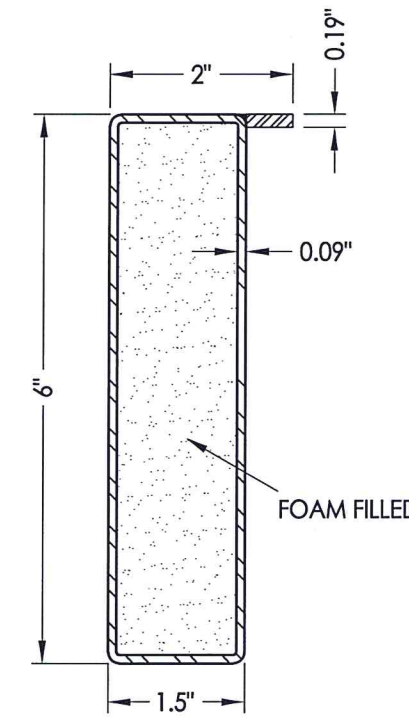
1
3 HORIZONTAL CROSS SECTION



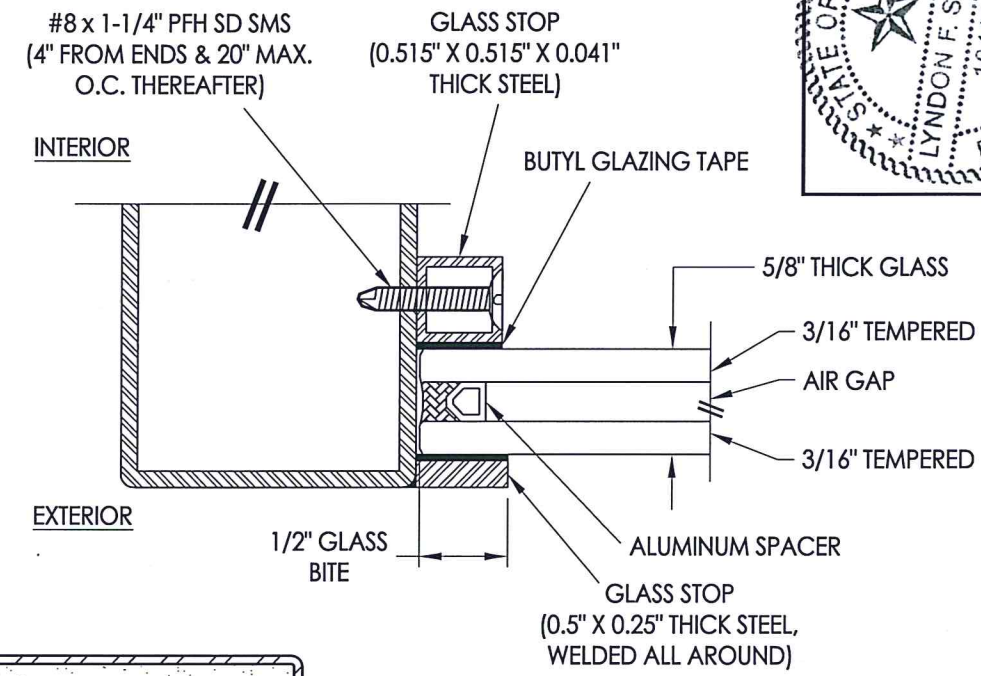
2
3 VERTICAL CROSS SECTION



MID RAIL



SIDELITE/TRANSOM FRAME



G2 GLAZING DETAIL



Documents Prepared By: Lyndon F. Schmidt, P.E.
TEXAS P.E. #104123

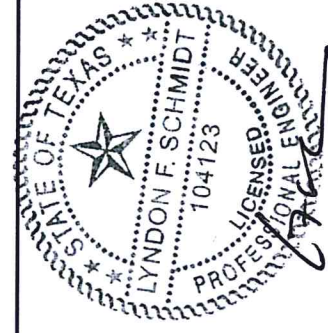
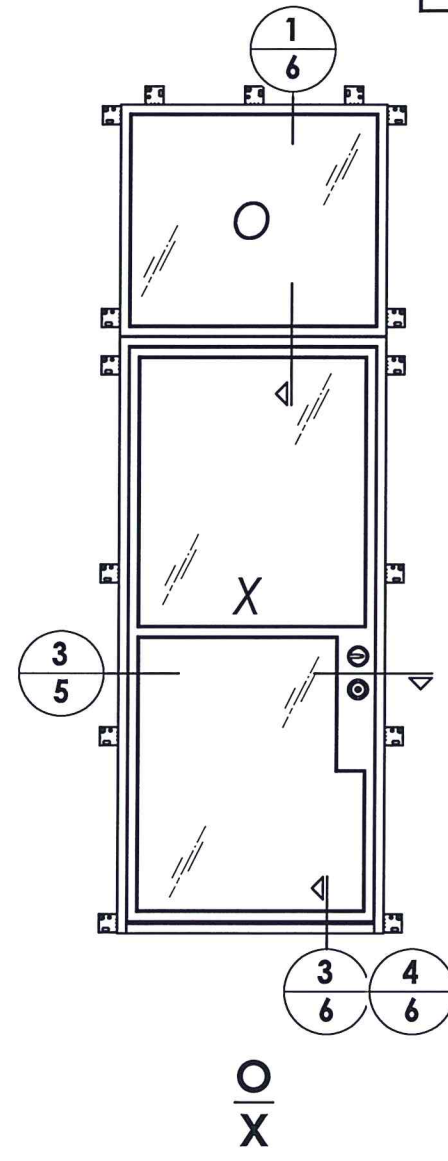
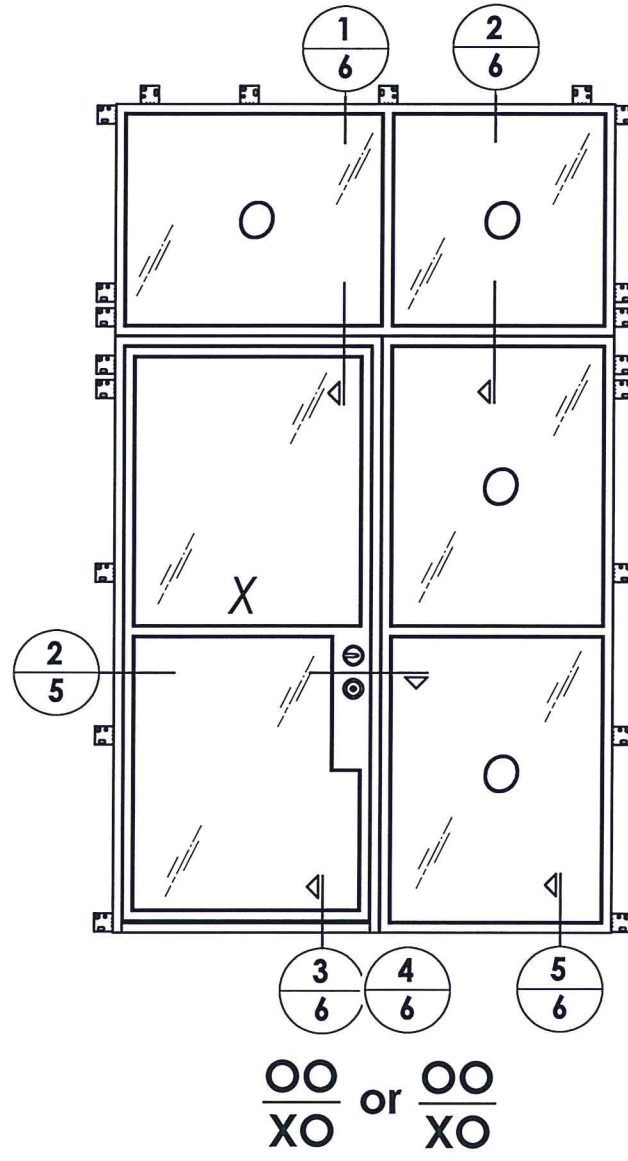
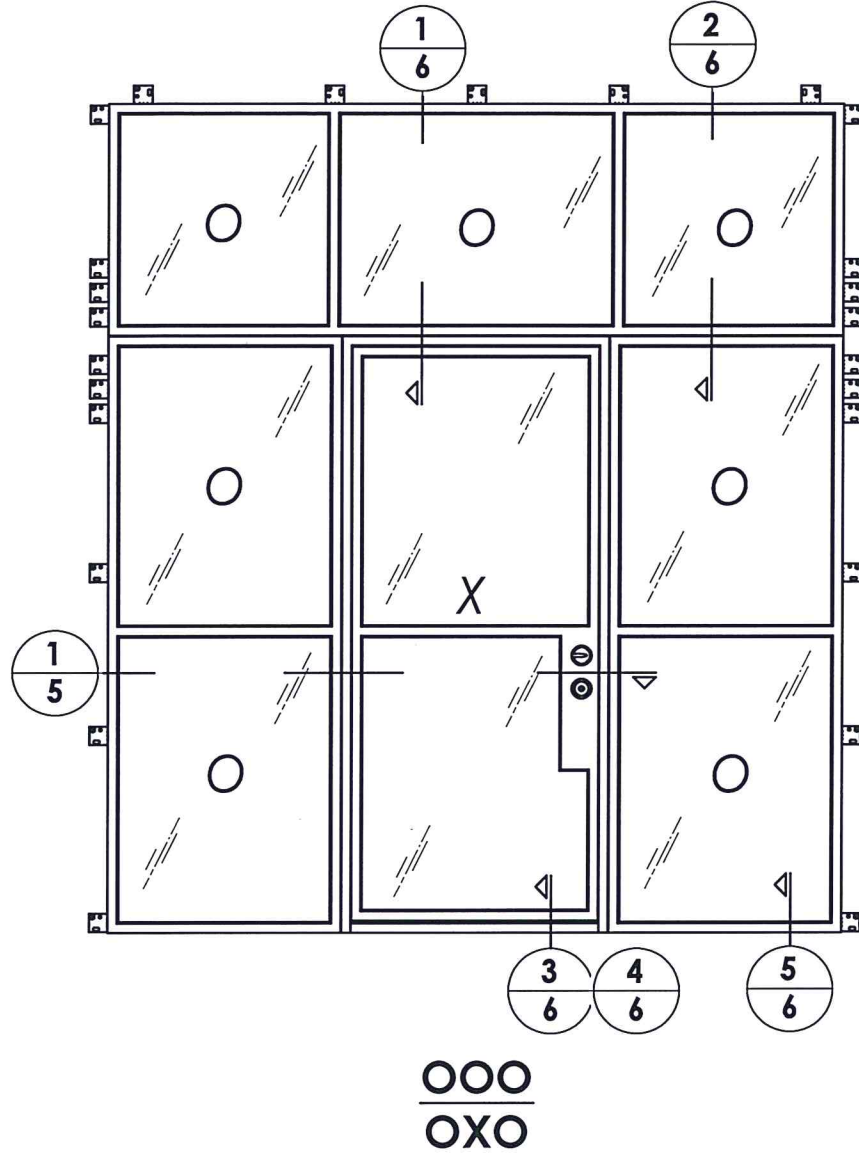
RW BUILDING CONSULTANTS, INC.
P.O. Box 230 Valrico FL 33595
Phone No.: 813.659.9197
TEXAS BOARD OF PROFESSIONAL ENGINEERS
CERTIFICATE OF REGISTRATION # F-11852

PRODUCT: COMPLEX INDUSTRIES
GLAZED IRON DOOR

PART OR ASSEMBLY:
SIDELITE & TRANSOM
PANEL DETAILS

NO.	DATE	DESCRIPTION	BY
1	7/02/20	UPDATE TO 2018 IBC/IRC CODE	LFS

DATE: 8/26/19
SCALE: N.T.S.
DWG. BY: TRJ
CHK. BY: LFS
DRAWING NO.: TX-4944
SHEET 3 OF 8

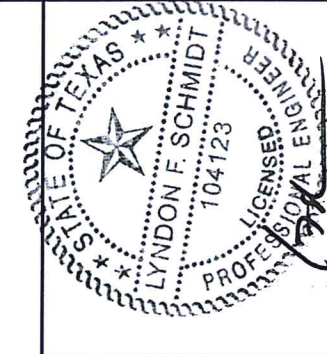


Documents Prepared By: Lyndon F. Schmidt, P.E.
TEXAS P.E. #104123

RW BUILDING CONSULTANTS, INC.
P.O. Box 230 Valrico FL 33595
Phone No.: 813.659.9197

TEXAS BOARD OF PROFESSIONAL ENGINEERS
CERTIFICATE OF REGISTRATION # F-11852

PRODUCT: COMPLEX INDUSTRIES GLAZED IRON DOOR	
PART OR ASSEMBLY: ELEVATIONS	
NO.	DATE
1	7/02/20
UPDATE TO 2018 IBC/IRC CODE	
LFS	BY
REVISIONS	
DATE: 8/26/19	
SCALE: N.T.S.	
DWG. BY: TRJ	
CHK. BY: LFS	
DRAWING NO.: TX-4944	
SHEET 4 OF 8	



7-220

Documents Prepared By: Lyndon F. Schmidt, P.E.
TEXAS P.E. #104123

RW BUILDING CONSULTANTS, INC.
P.O. Box 230 Valrico FL 33595
Phone No.: 813.659.9197

TEXAS BOARD OF PROFESSIONAL ENGINEERS
CERTIFICATE OF REGISTRATION # F-11852

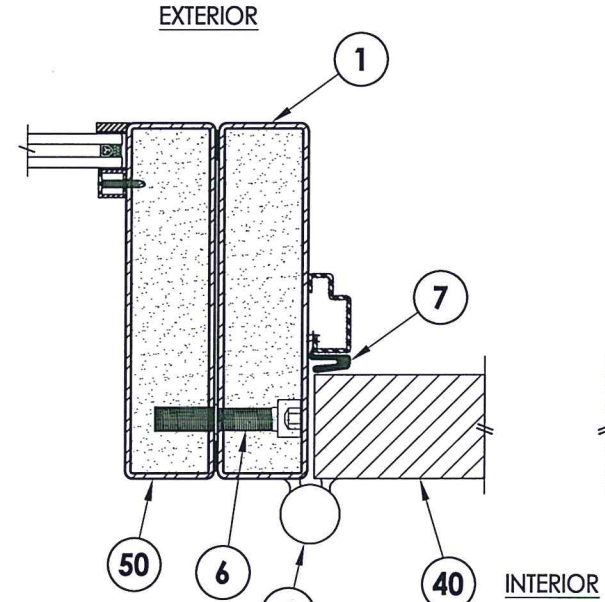
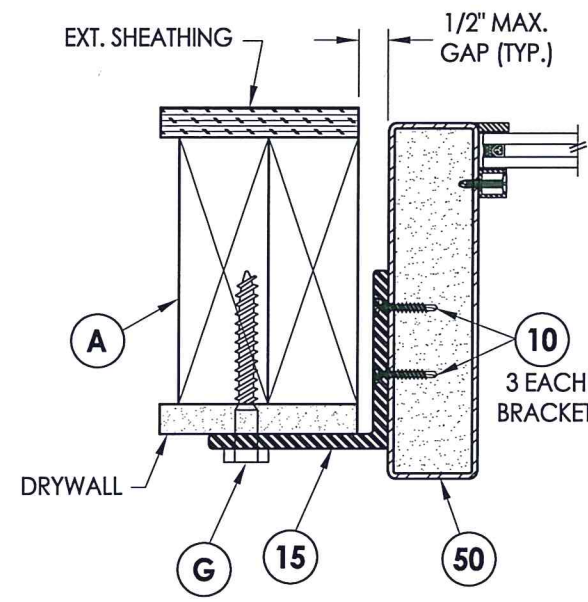
PRODUCT: COMPLEX INDUSTRIES
GLAZED IRON DOOR

PART OR ASSEMBLY:
HORIZONTAL
CROSS SECTIONS

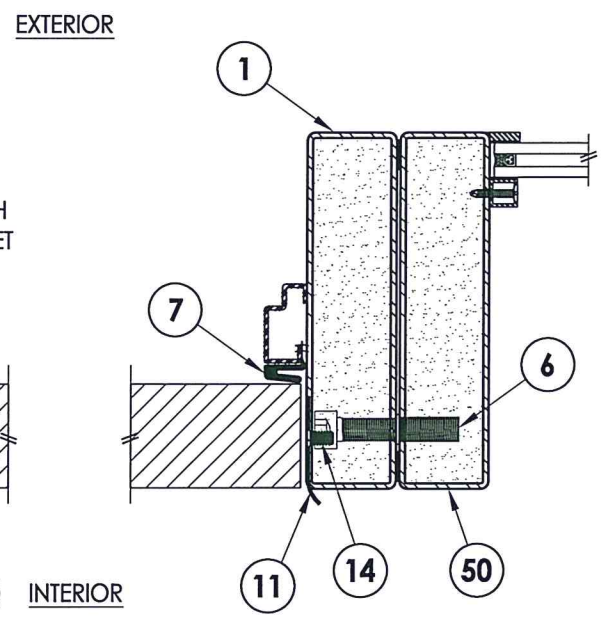
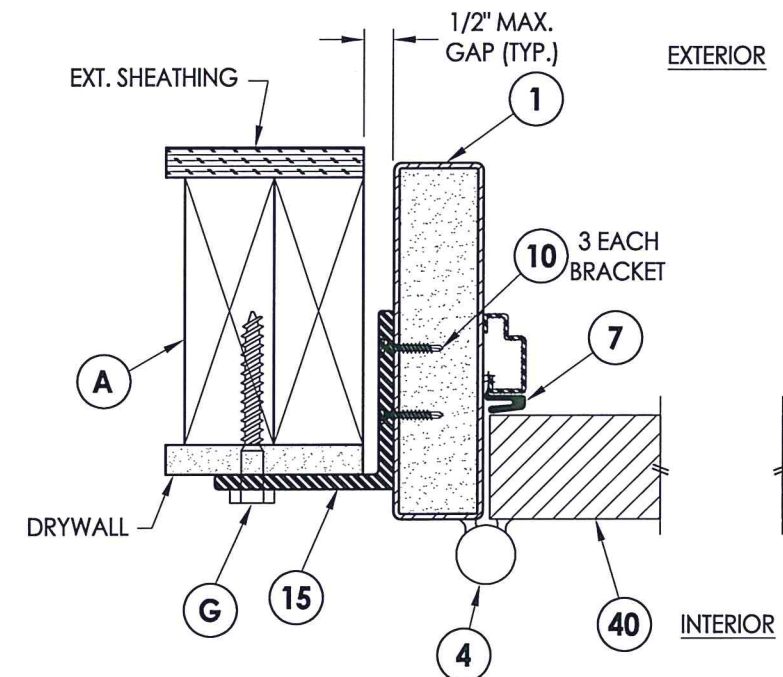
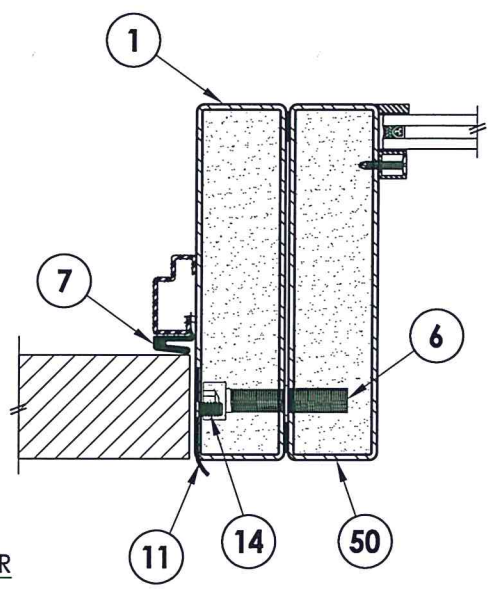
NO.	DATE	DESCRIPTION	BY
1	7/02/20	UPDATE TO 2018 IBC/IRC CODE	LFS

DATE:	8/26/19
SCALE:	N.T.S.
DWG. BY:	TRJ
CHK. BY:	LFS
DRAWING NO.:	TX-4944
SHEET	5 OF 8

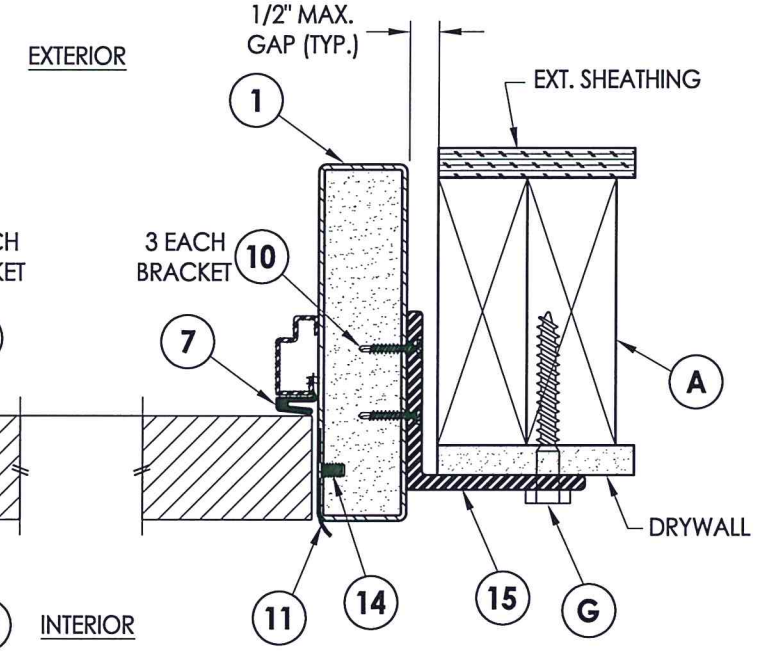
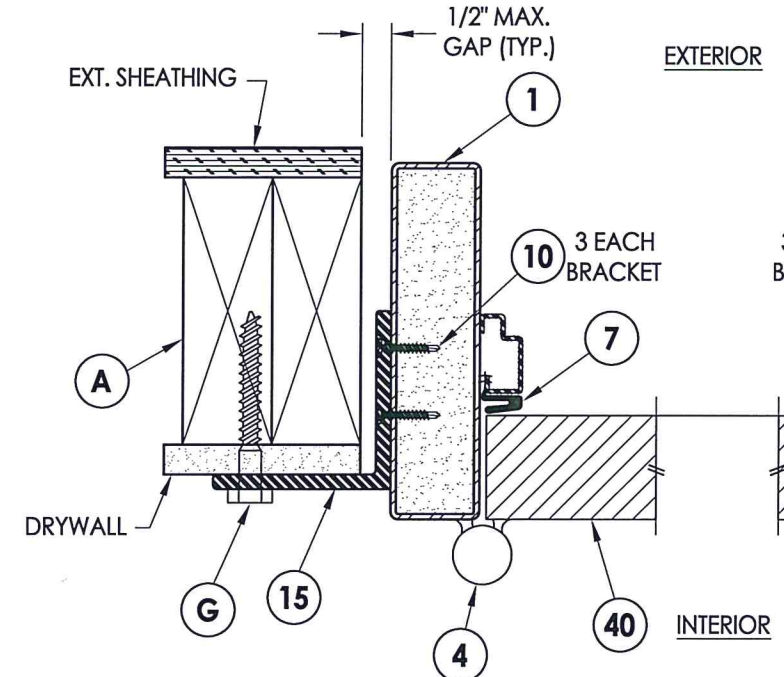
© 2019 R.W. BUILDING CONSULTANTS INC.



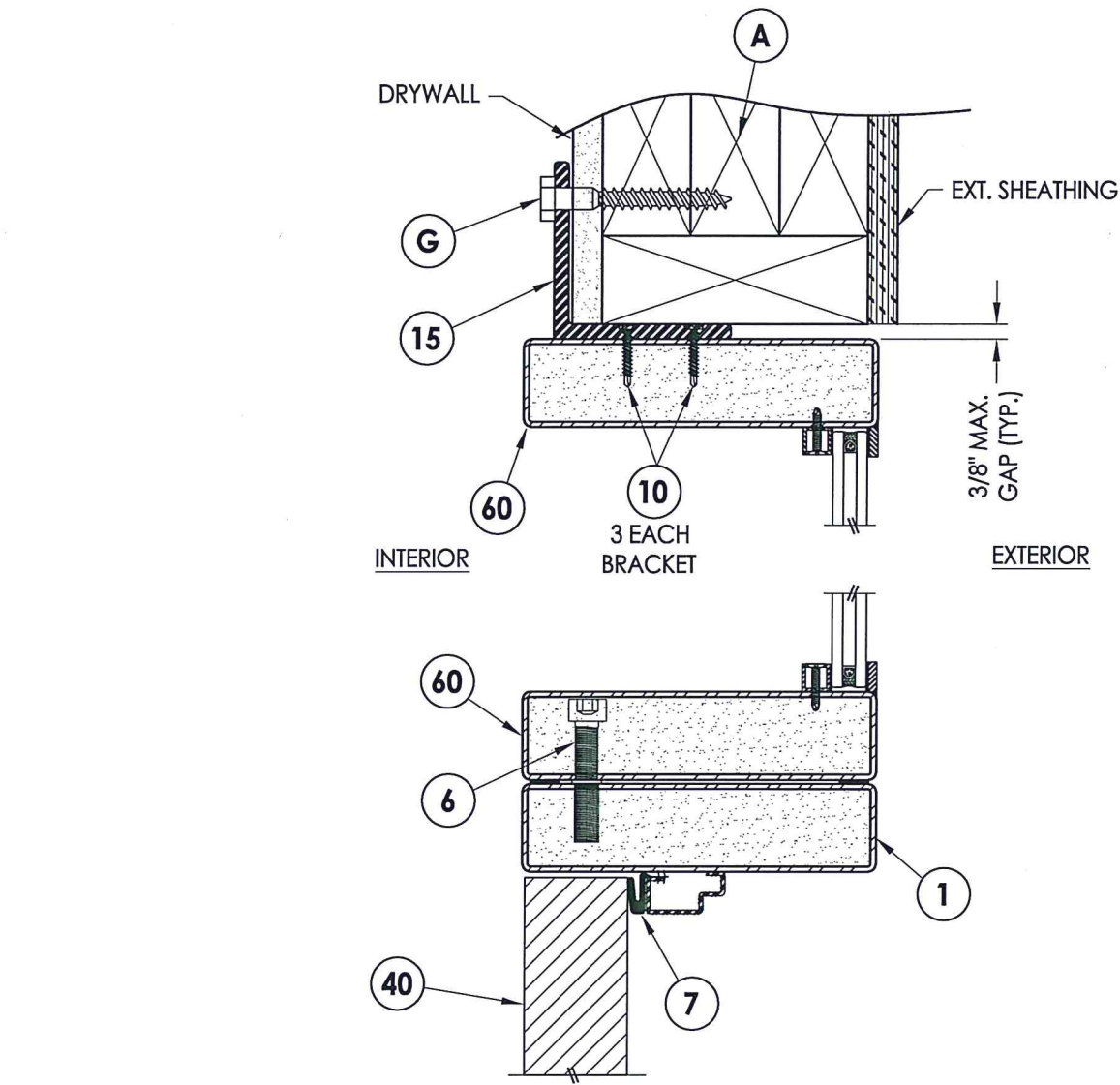
1
5 HORIZONTAL CROSS SECTION



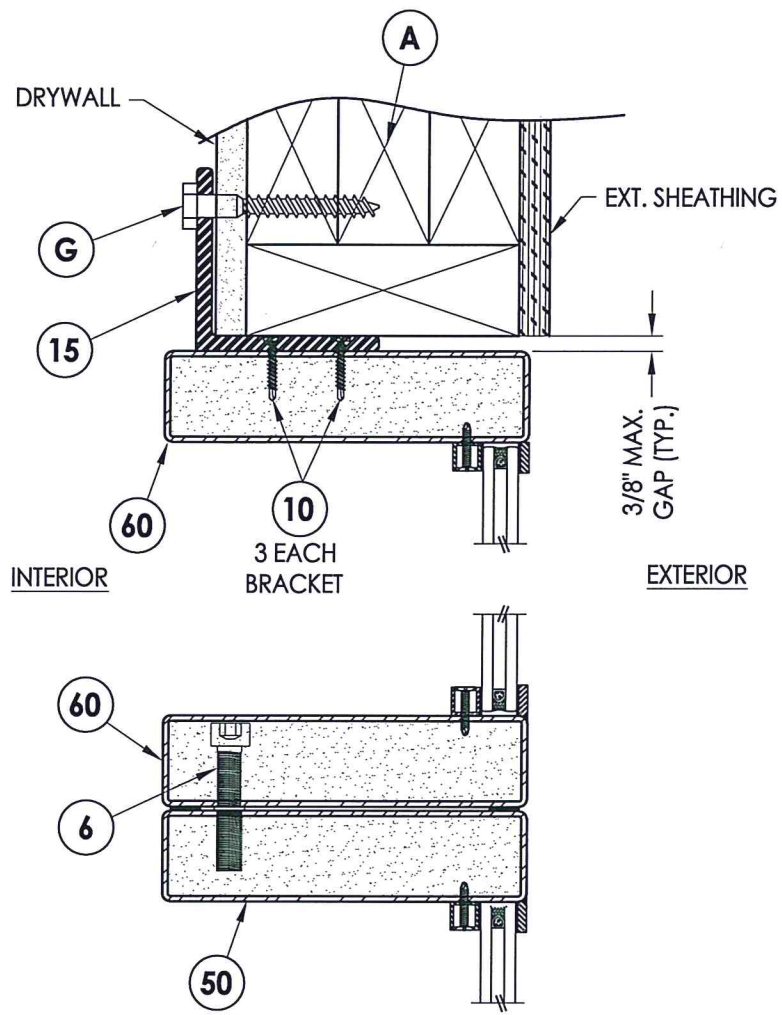
2
5 HORIZONTAL CROSS SECTION



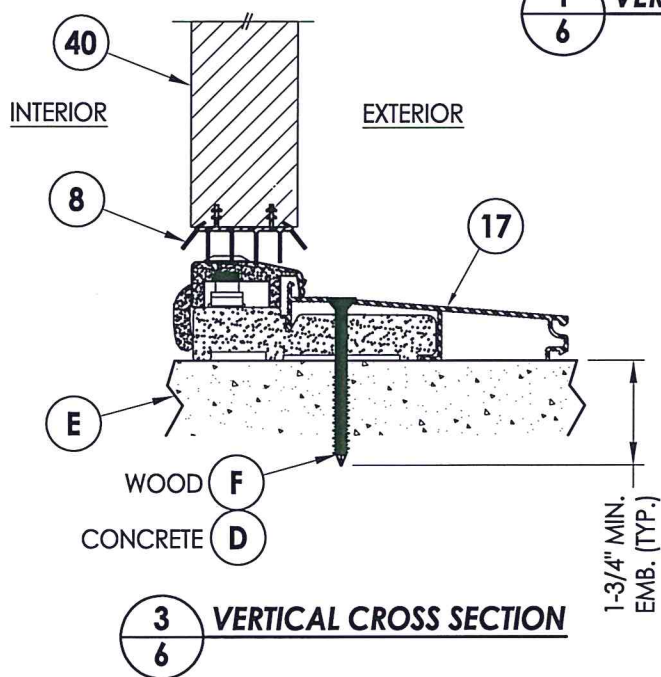
3
5 HORIZONTAL CROSS SECTION



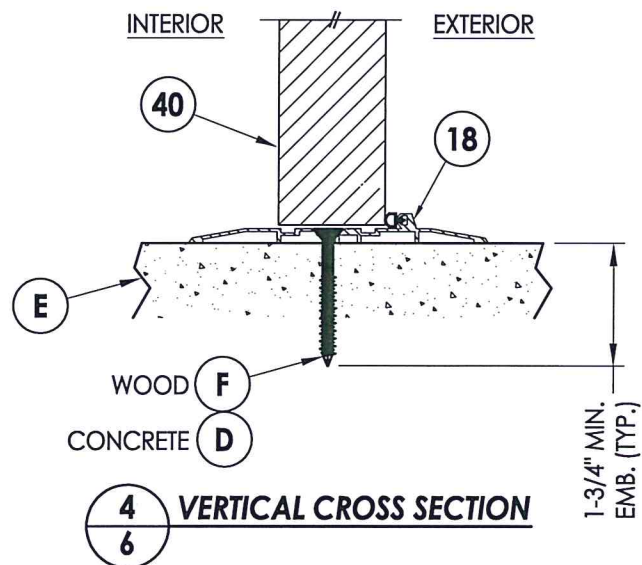
1
6 VERTICAL CROSS SECTION



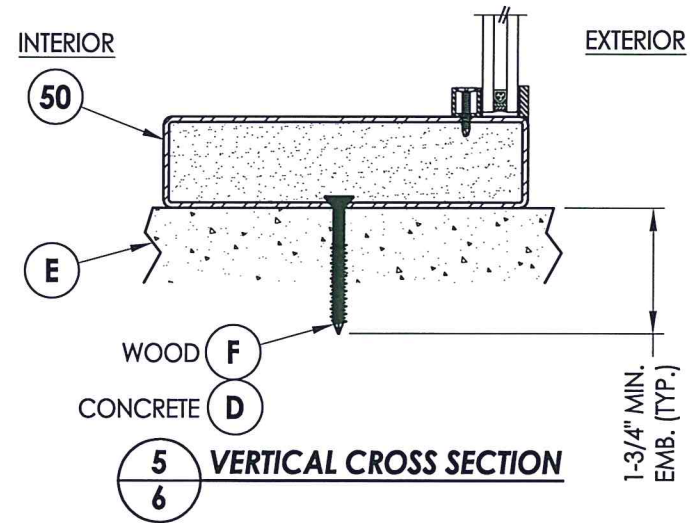
2
6 VERTICAL CROSS SECTION



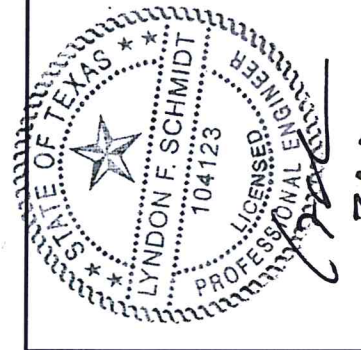
3
6 VERTICAL CROSS SECTION



4
6 VERTICAL CROSS SECTION



5
6 VERTICAL CROSS SECTION



Documents Prepared By: Lyndon F. Schmidt, P.E.
TEXAS P.E. #104123

RW BUILDING CONSULTANTS, INC.
P.O. Box 230 Valrico FL 33595
Phone No.: 813.659.9197

TEXAS BOARD OF PROFESSIONAL ENGINEERS
CERTIFICATE OF REGISTRATION # F-11852

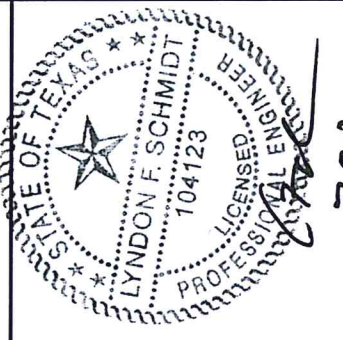
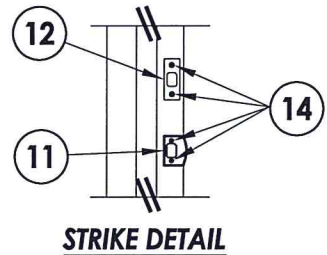
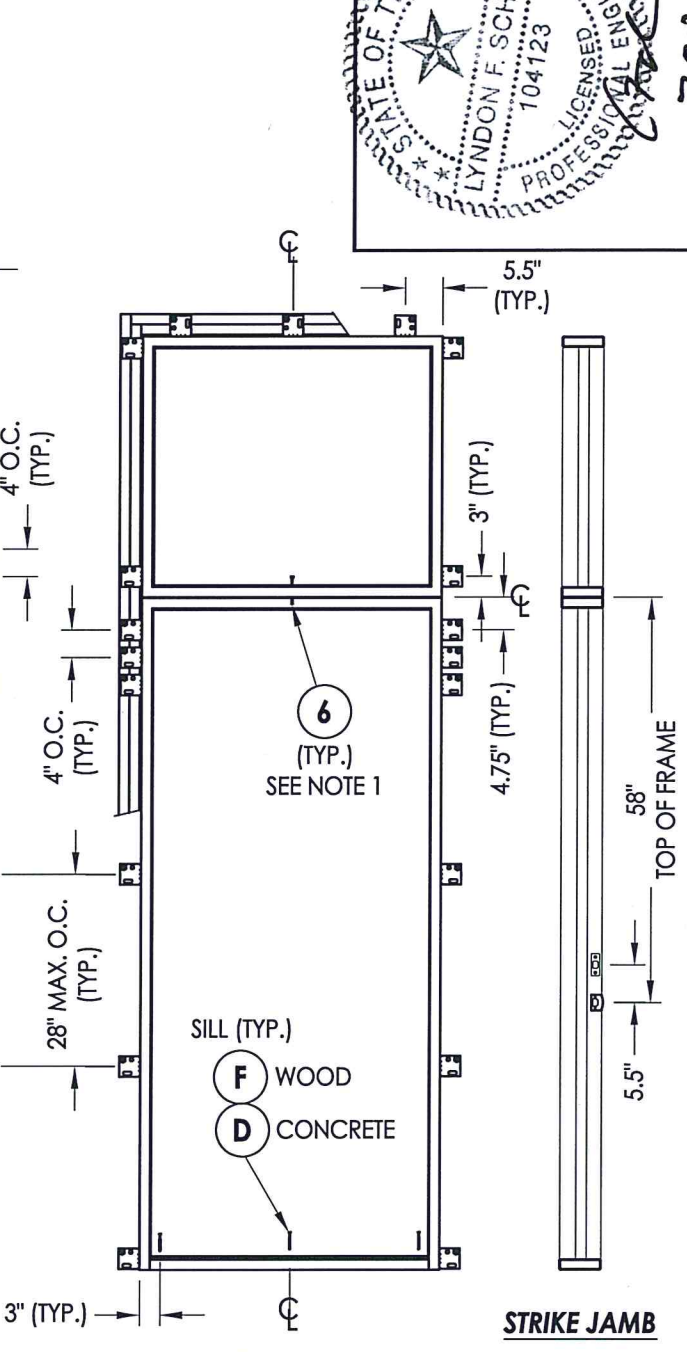
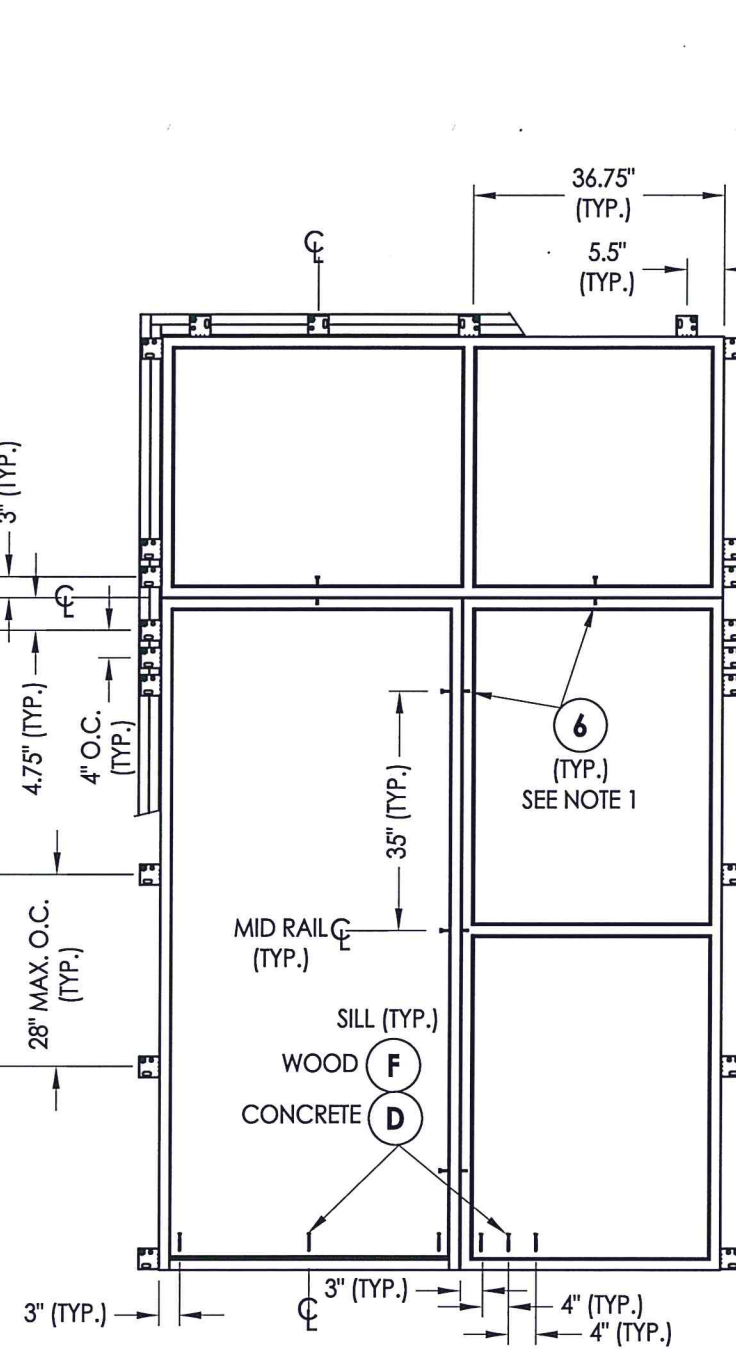
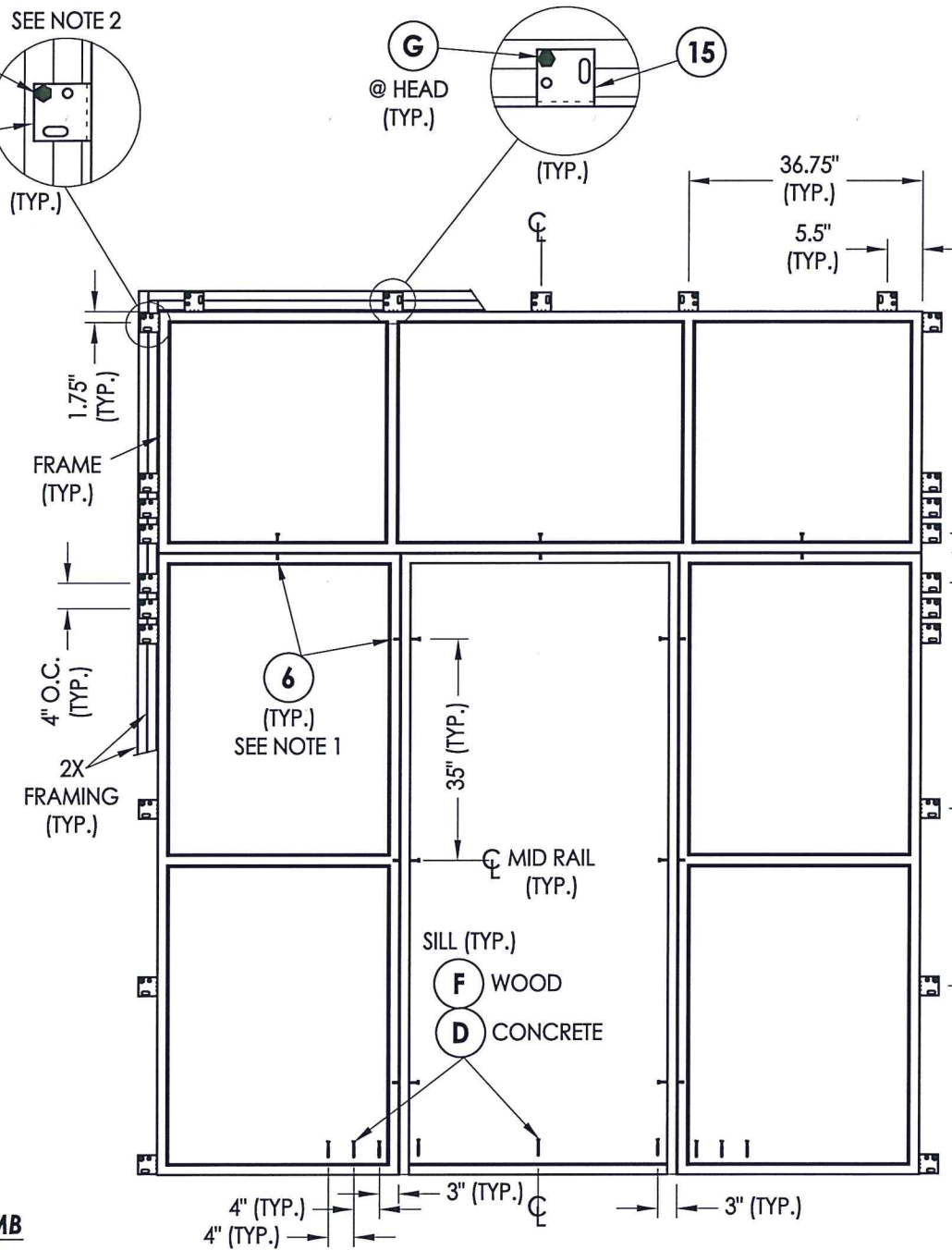
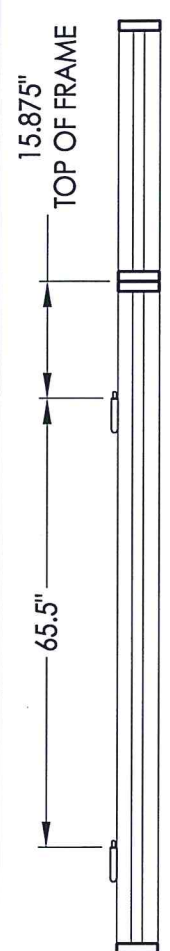
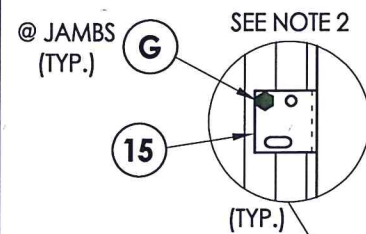
PRODUCT: COMPLEX INDUSTRIES GLAZED IRON DOOR

PART OR ASSEMBLY: VERTICAL CROSS SECTIONS

NO.	DATE	DESCRIPTION	BY
1	7/02/20	UPDATE TO 2018 IBC/IRC CODE	LFS

REVISIONS

DATE: 8/26/19
SCALE: N.T.S.
DWG. BY: TRJ
CHK. BY: LFS
DRAWING NO.: TX-4944
SHEET 6 OF 8



Documents Prepared By: Lyndon F. Schmidt, P.E.
TEXAS P.E. #104123

RW BUILDING CONSULTANTS, INC.
P.O. Box 230 Valrico FL, 33595
Phone No.: 813.659.9197

TEXAS BOARD OF PROFESSIONAL ENGINEERS
CERTIFICATE OF REGISTRATION # F-11852

PRODUCT: COMPLEX INDUSTRIES GLAZED IRON DOOR
PART OR ASSEMBLY: FRAME ANCHORING

REVISIONS	
NO.	DATE
1	7/02/20
	UPDATE TO 2018 IBC/IRC CODE
	LFS BY

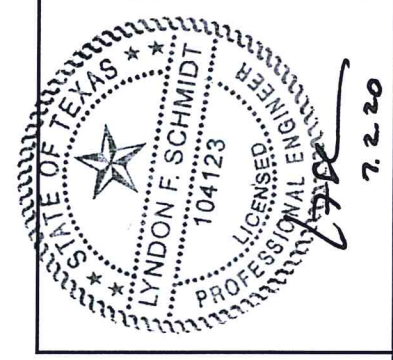
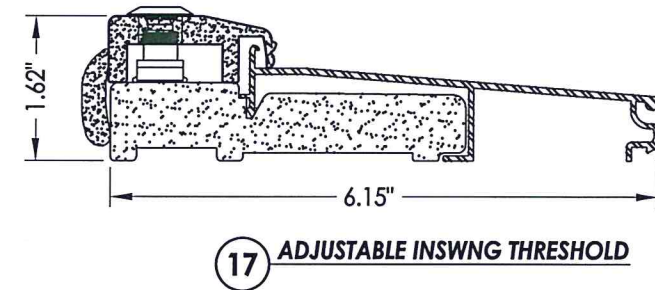
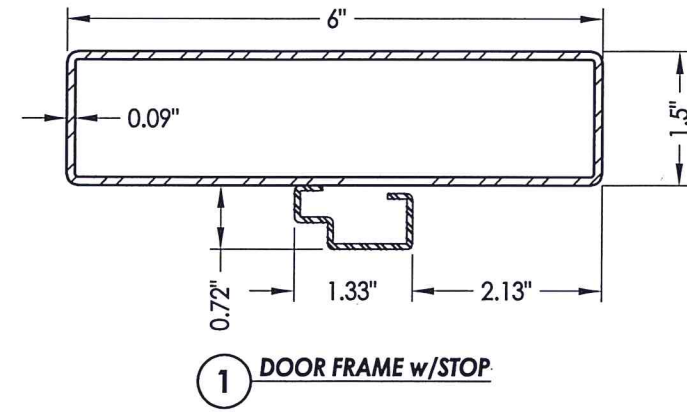
DATE: 8/26/19
SCALE: N.T.S.
DWG. BY: TRJ
CHK. BY: LFS
DRAWING NO.: TX-4944
SHEET 7 OF 8

- NOTES:
- Item is 6 located at the centerline of each transom sash and along door frame where indicated.
 - Brackets located at the top & bottom of both jambs are welded to the frame, all others are screwed on.

BILL OF MATERIALS

ITEM #	DESCRIPTION	MATERIAL
A	2X FRAMING (SG >= 0.42)	WOOD
C	1/4" MAX. SHIM	-
D	1/4" PFH ELCO OR ITW CONCRETE SCREW (1.5" MIN. EMBEDMENT)	STEEL
F	#10 PFH WOOD SCREW (1.5" MIN. EMBEDMENT)	STEEL
G	3/8" X 3" HWH LAG SCREW (2.75" MIN. EMBEDMENT)	STEEL
1	DOOR FRAME w/ STOP	STEEL
4	DOOR HINGE	STEEL
6	10mm X 25mm X 1.50 CAP HEAD SCREW w/ 10mm X 1.50 THREAD INSERT	STEEL
7	WEATHERSTRIP	FOAM
8	DOOR SWEEP	PVC
10	#8 X 1" PPH SELF-DRILLING SMS	STEEL
11	LATCH STRIKE PLATE	STEEL
12	DEADBOLT STRIKE PLATE	STEEL
14	#8-32 X 1/2" PFH MACHINE SCREW	STEEL
15	ANCHORING BRACKET	STEEL
17	ADJUSTABLE INSWING THRESHOLD	ALUM/COMP
18	ADA INSWING THRESHOLD	ALUM
40	DOOR PANEL	STEEL
50	SIDELITE PANEL	STEEL
60	TRANSOM PANEL	STEEL

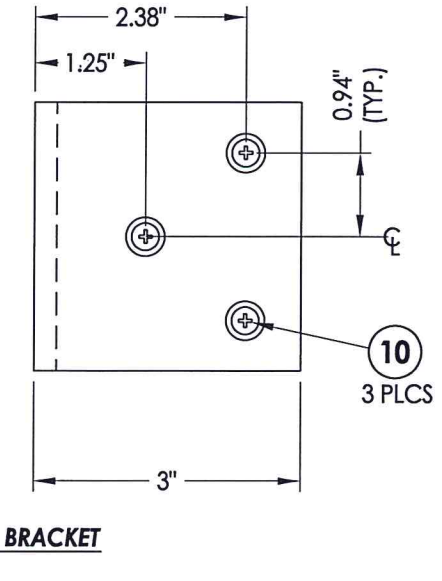
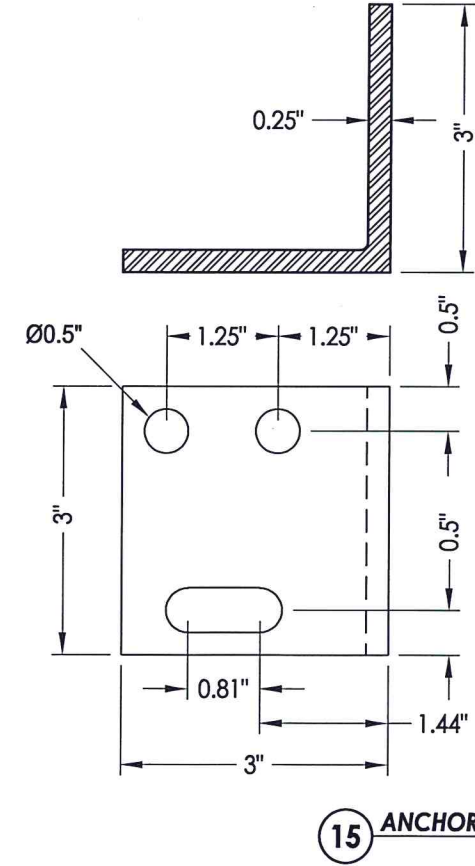
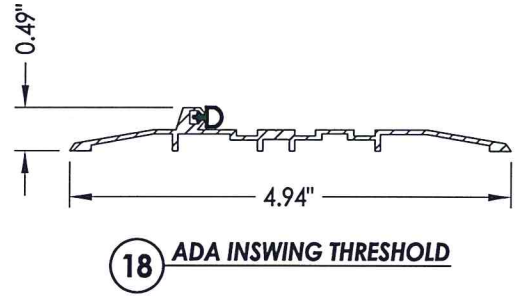
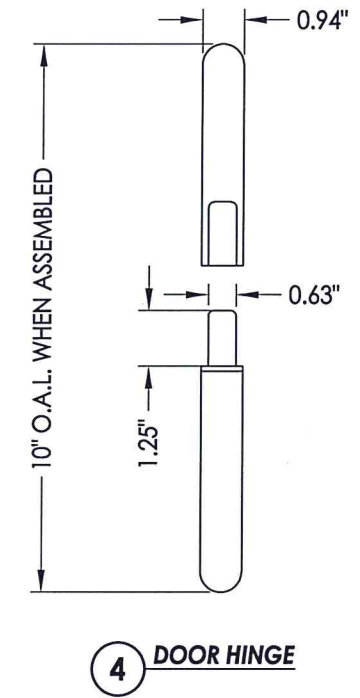
NOTE: ALL DOOR FRAME TUBULAR STEEL SHALL BE ASTM A36 STEEL



Documents Prepared By: Lyndon F. Schmidt, P.E.
TEXAS P.E. #104123

RW BUILDING CONSULTANTS, INC.
P.O. Box 230 Valrico FL 33595
Phone No.: 813.659.9197

TEXAS BOARD OF PROFESSIONAL ENGINEERS
CERTIFICATE OF REGISTRATION # F-11852



CONCRETE ANCHOR NOTES:

- Concrete anchor locations at the corners may be adjusted to maintain the min. edge distance to mortar joints.
- Concrete anchor locations noted as "MAX. ON CENTER" must be adjusted to maintain the min. edge distance to mortar joints, additional concrete anchors may be required to ensure the "MAX. ON CENTER" dimension are not exceeded.
- Concrete anchor table:

ANCHOR TYPE	ANCHOR SIZE	MIN. EMBEDMENT	MIN. CLEARANCE TO MASONRY EDGE	MIN. CLEARANCE TO ADJACENT ANCHOR
ITW BUILDEX TAPCON®	1/4"	1-3/4"	1-1/2"	4"
ELCO ULTRACON®	1/4"	1-3/4"	2-1/2"	4"

PRODUCT:	COMPLEX INDUSTRIES GLAZED IRON DOOR
PART OR ASSEMBLY:	BILL OF MATERIALS AND COMPONENTS
DATE:	8/26/19
SCALE:	N.T.S.
DWG. BY:	TRJ
CHK. BY:	LFS
DRAWING NO.:	TX-4944
SHEET	8 OF 8