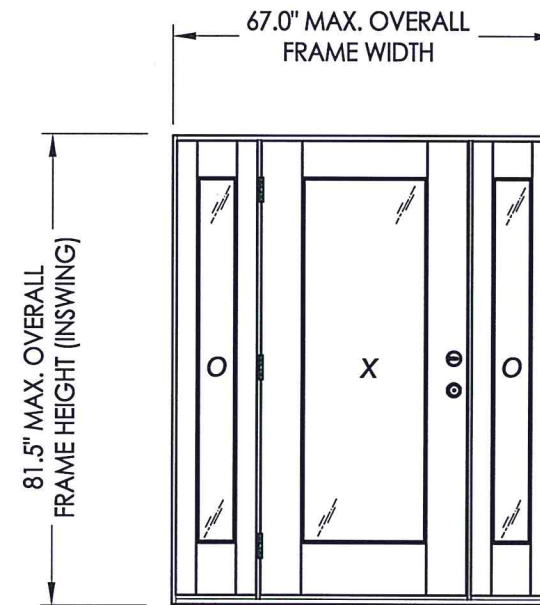
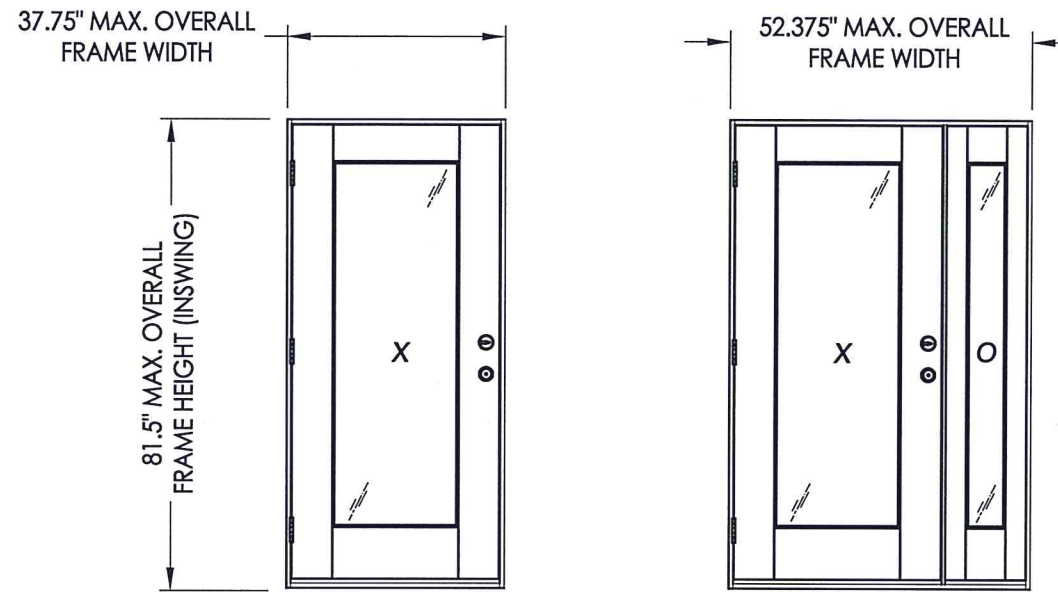




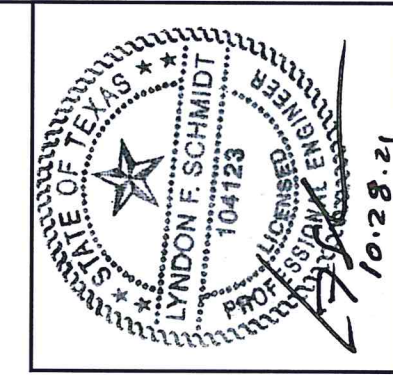
GLAZED WOOD ENTRY DOOR SINGLES w/ or w/out SIDELITES

**INSWING
"NON-IMPACT"**



CONTINUOUS HEAD & SILL

| CONFIGURATION | MAX. FRAME DIMENSION | DESIGN PRESSURE (PSF) INSWING | |
|---------------|----------------------|-------------------------------|----------|
| | | POSITIVE | NEGATIVE |
| X | 37.75" x 81.5" | +50.0 | -55.0 |
| OX/XO | 52.375" x 81.5" | +50.0 | -55.0 |
| OXO | 67.0" x 81.5" | +50.0 | -55.0 |



Documents Prepared By: Lyndon F. Schmidt, P.E.
TEXAS P.E. #104123

RW BUILDING CONSULTANTS, INC.
P.O. Box 230 Valrico FL 33595
Phone No.: 813.659.9197

TEXAS BOARD OF PROFESSIONAL ENGINEERS
CERTIFICATE OF REGISTRATION # F-11852

EVALUATED FOR USE IN THE STATE OF TEXAS

The Wood Door system described herein complies with the 2018 International Residential Code (IRC), Sections R301 & R609 and the 2018 International Building Code (IBC), Sections 1404.13, 1609, 1709.5, 2403 and 2404 subject to the following conditions:

1. Anchors shall be as listed and spaced as shown in the details. Anchor embedment to base material shall be beyond wall dressing or stucco.
2. When used in areas requiring wind-borne debris protection this product is required to be protected with an impact resistant covering that complies with Section R301.2.1.2 of the IRC and Section 1609.1.2 of the IBC.
3. Allowable design pressure requirements must be equal to or less than the design pressure rating shown in the design pressure chart, sheet 1 of this drawing.
4. Conditions not covered by this drawing are subject to further engineering analysis.

| TABLE OF CONTENTS | |
|-------------------|--|
| SHEET # | DESCRIPTION |
| 1 | Typical Elevations, Design Pressures & General Notes |
| 2 | Door Panel & Glazing Details |
| 3 | Sidelite Panel Details |
| 4 | Elevations |
| 5 | Horizontal & Vertical Cross Sections |
| 6 | Horizontal Cross Sections |
| 7 | Vertical Cross Sections |
| 8 | Frame Anchoring & Hardware Details |
| 9 | Bill of Materials & Components |

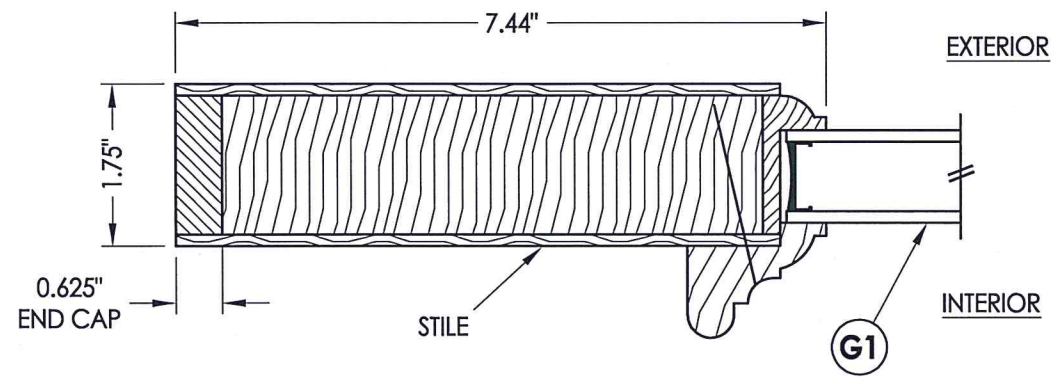
PRODUCT: DOORSCAPES FIBERGLASS DOOR

PART OR ASSEMBLY: TYPICAL ELEVATION, DESIGN PRESSURES & GENERAL NOTES

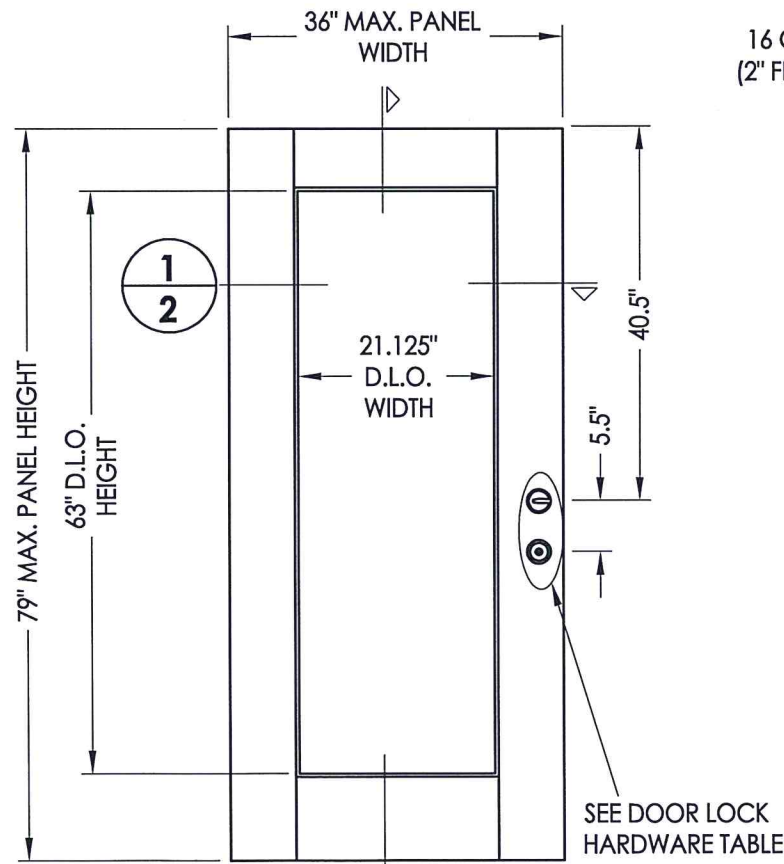
| NO. | DATE | BY | REVISIONS |
|-----|----------|-----|-----------------------------|
| 1 | 10/28/21 | LFS | UPDATE TO 2018 IBC/IRC CODE |

DATE: 5/06/19
SCALE: N.T.S.
DWG. BY: MT
CHK. BY: LFS
DRAWING NO.: TX-4934
SHEET 1 OF 9

Z:\Clients\Doorscapes\B - Texas Dept of Ins\TDI - DR 1060 Wood Non-Impact\C - Drawings\TX-4934.dwg

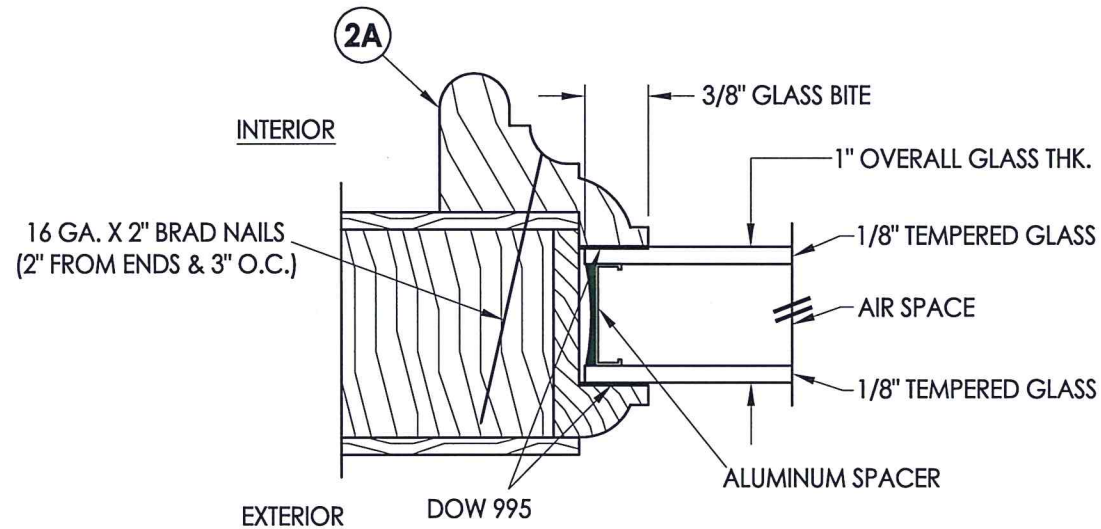


1
2
HORIZONTAL CROSS SECTION

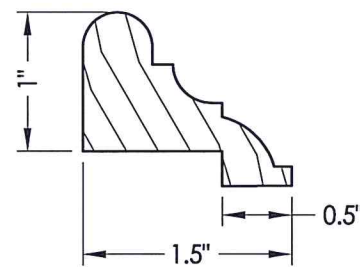


40
DOOR PANEL
Doorscapes

WOOD DOOR COMPONENTS:
OUTER SKIN & END CAPS: MAHOGANY (G= 0.5 MIN.)
CORE: FINGER JOINT PINE (G= 0.42 MIN.)

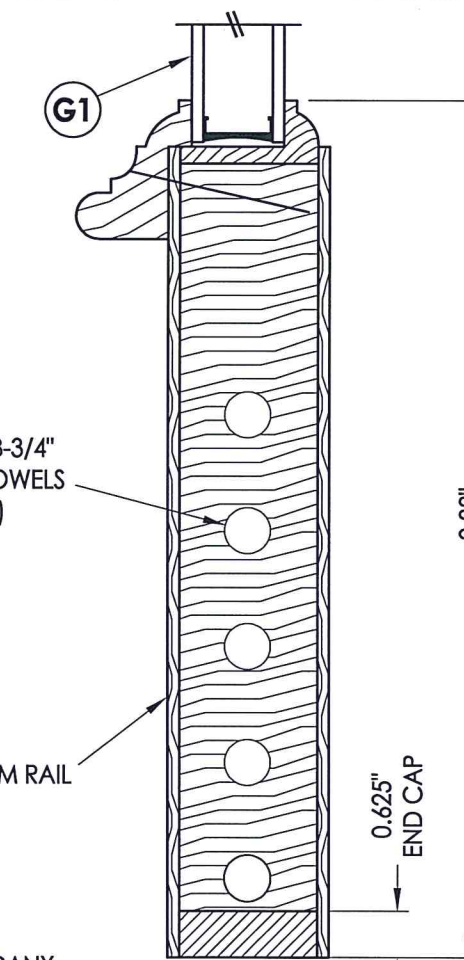
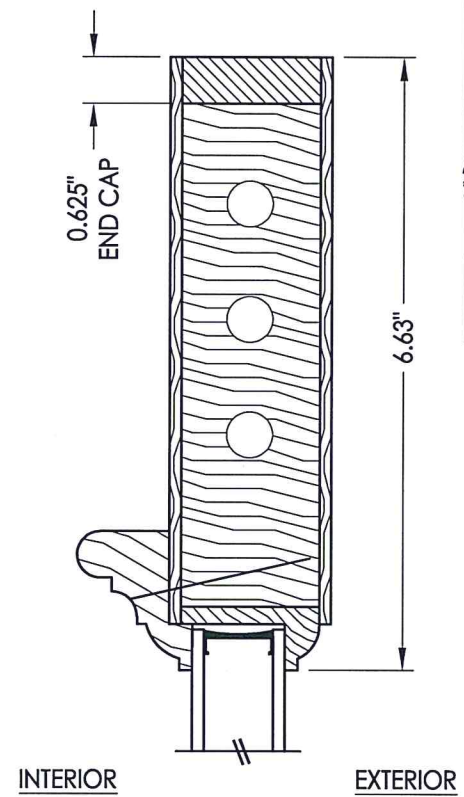


G1
GLAZING DETAIL

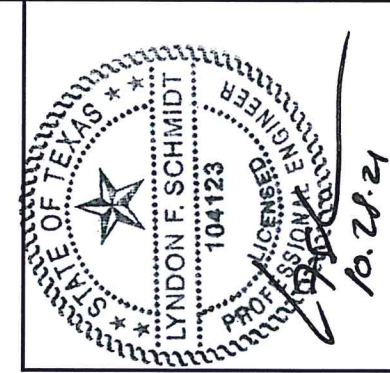


2A
GLAZING BEAD

| HARDWARE TABLE | |
|----------------|---|
| MANUFACTURER | MODEL |
| YALE | KNOB: YE SERIES (10) DEADBOLT: YE SERIES (82E) |



2
2
VERTICAL CROSS SECTION



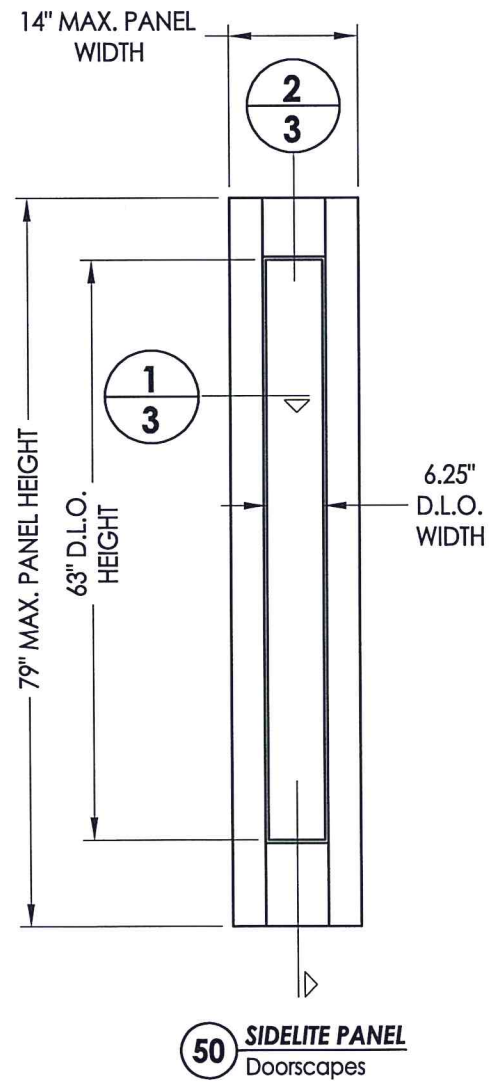
Documents Prepared By: Lyndon F. Schmidt, P.E.
TEXAS P.E. #104123

RW BUILDING CONSULTANTS, INC.
P.O. Box 230 Valrico FL 33595
Phone No.: 813.659.9197
TEXAS BOARD OF PROFESSIONAL ENGINEERS
CERTIFICATE OF REGISTRATION # F-11852

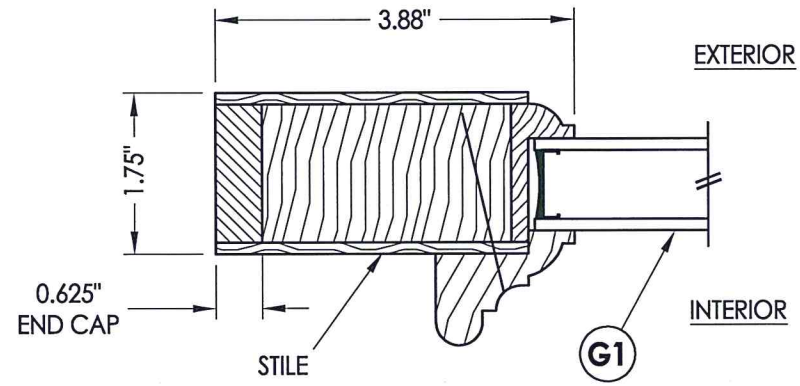
PRODUCT: DOORSCAPES
FIBERGLASS DOOR
PART OR ASSEMBLY:
DOOR PANEL
& GLAZING DETAILS

| NO. | DATE | DESCRIPTION | LFS | BY |
|-----|----------|-----------------------------|-----|----|
| 1 | 10/28/21 | UPDATE TO 2018 IBC/IRC CODE | | |

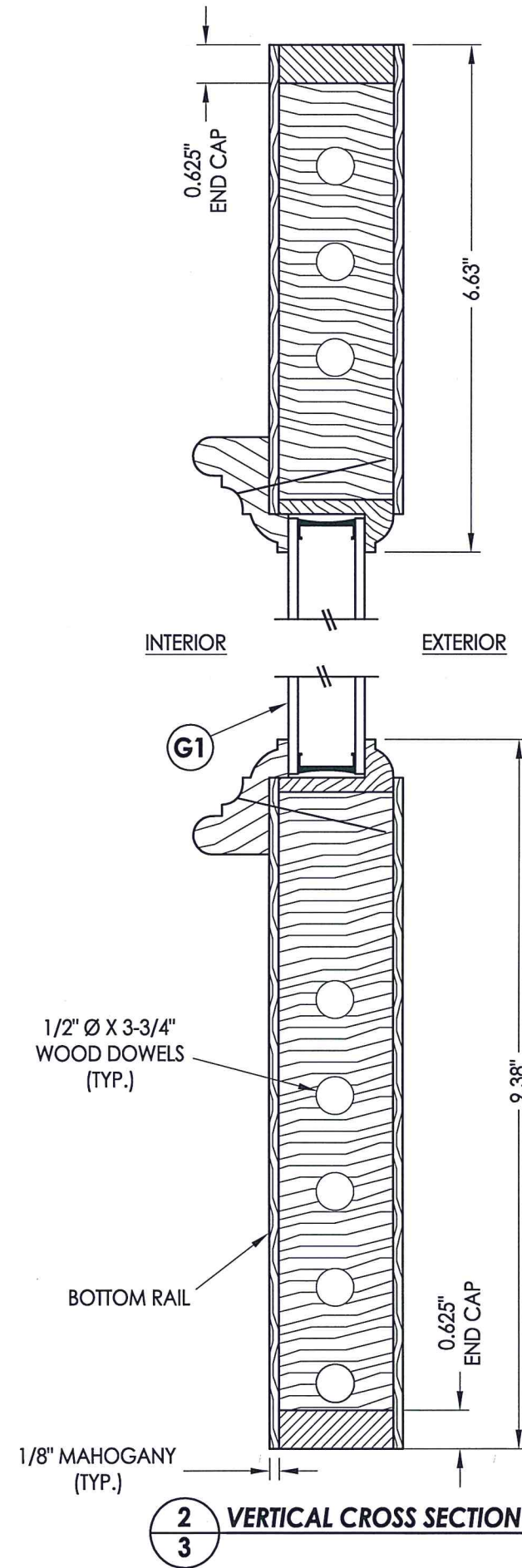
DATE: 5/06/19
SCALE: N.T.S.
DWG. BY: MT
CHK. BY: LFS
DRAWING NO.: TX-4934
SHEET 2 OF 9



50 SIDELITE PANEL
Doorscapes

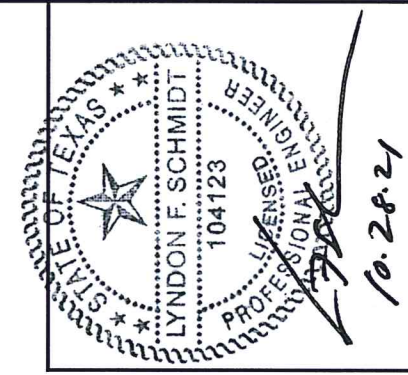


1 HORIZONTAL CROSS SECTION



2 VERTICAL CROSS SECTION

WOOD DOOR COMPONENTS:
 OUTER SKIN & END CAPS: MAHOGANY (G= 0.5 MIN.)
 CORE: FINGER JOINT PINE (G= 0.42 MIN.)



Documents Prepared By: Lyndon F. Schmidt, P.E.
 TEXAS P.E. #104123

RW BUILDING CONSULTANTS, INC.
 P.O. Box 230 Vairico FL 33595
 Phone No.: 813.659.9197

TEXAS BOARD OF PROFESSIONAL ENGINEERS
 CERTIFICATE OF REGISTRATION # F-11852

| | |
|-------------------|-------------------------------|
| PRODUCT: | DOORSCAPES FIBERGLASS DOOR |
| PART OR ASSEMBLY: | SIDELITE PANEL DETAILS |

| NO. | DATE | DESCRIPTION | BY |
|-----------|----------|-----------------------------|-----|
| 1 | 10/28/21 | UPDATE TO 2018 IBC/IRC CODE | LFS |
| REVISIONS | | | |

DATE: 5/06/19

SCALE: N.T.S.

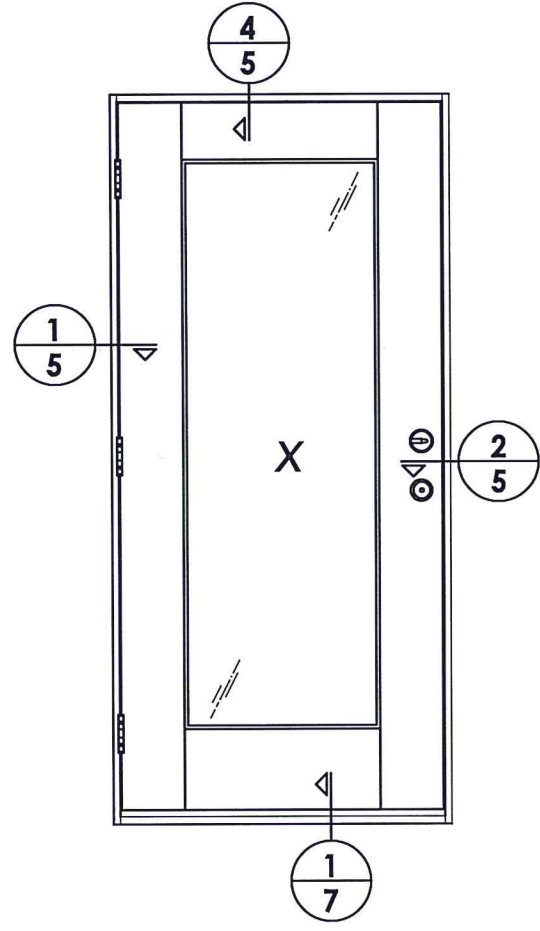
DWG. BY: MT

CHK. BY: LFS

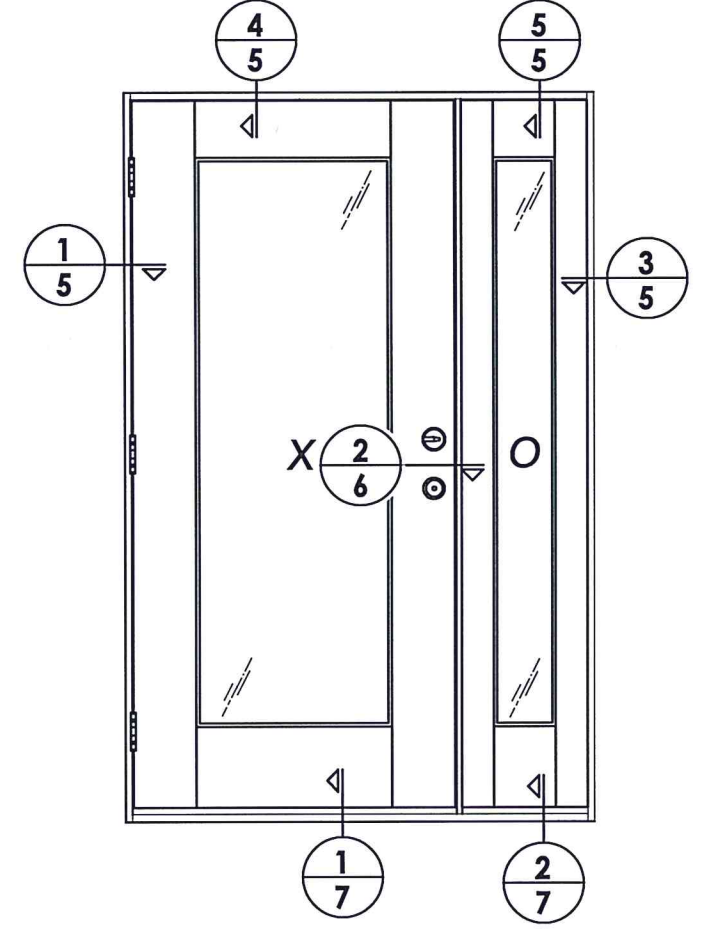
DRAWING NO.:

TX-4934

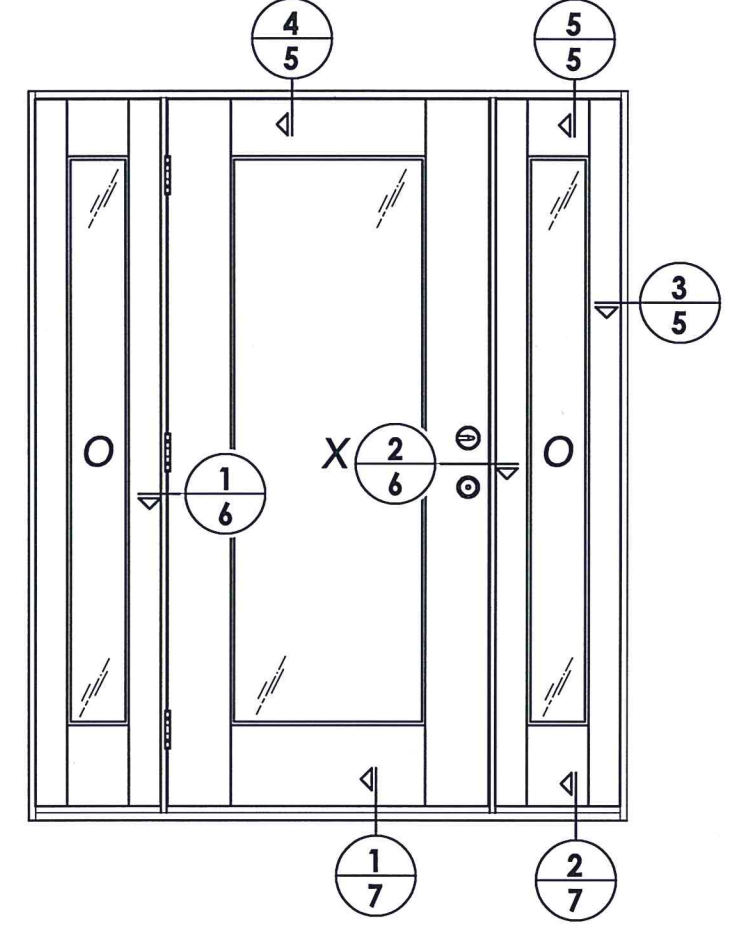
SHEET 3 OF 9



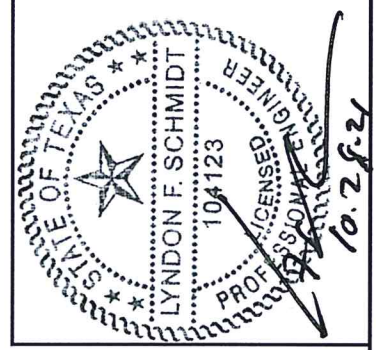
ELEVATION
X



ELEVATION
XO / OX



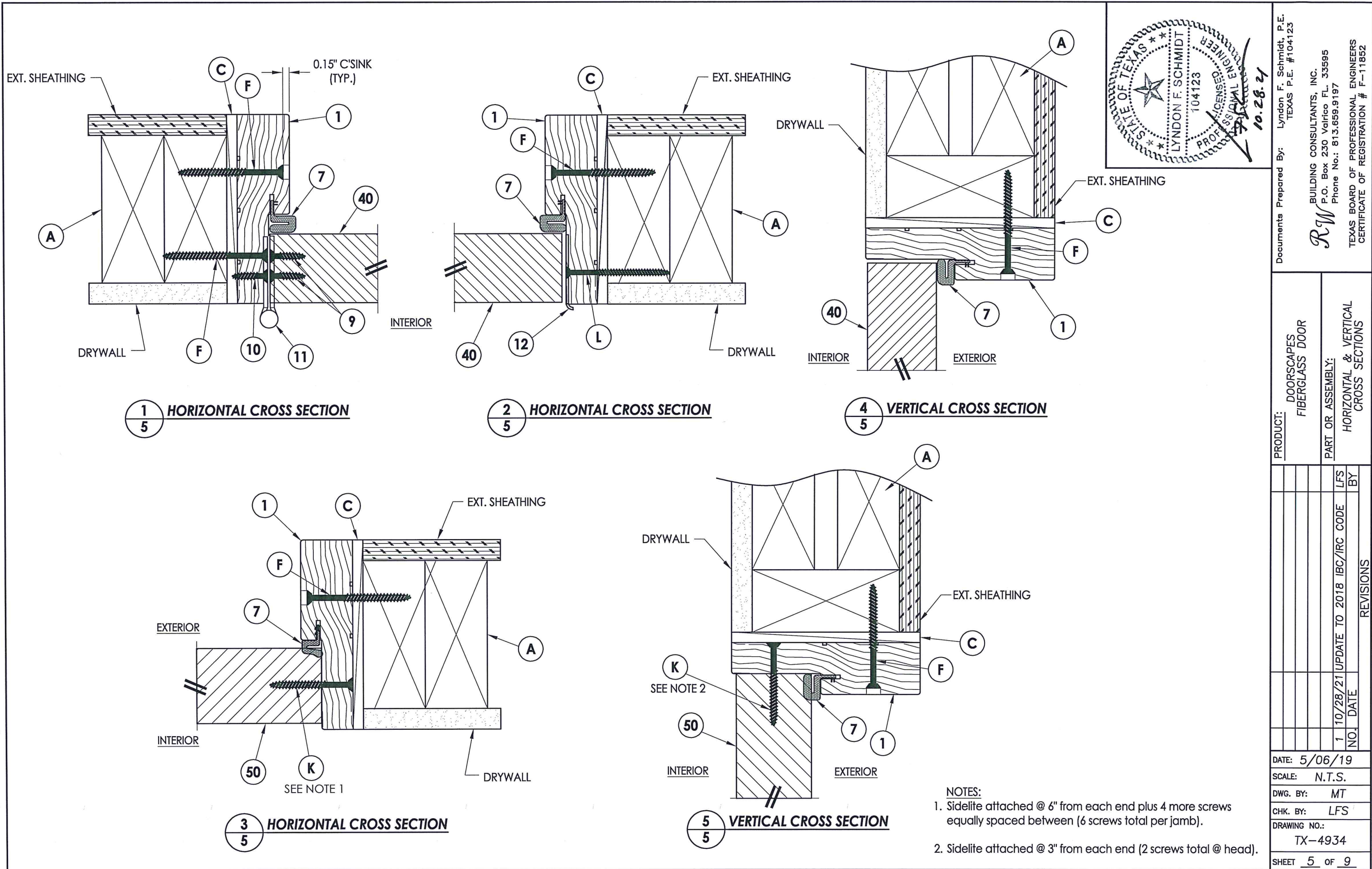
ELEVATION
OXO



Documents Prepared By: Lyndon F. Schmidt, P.E.
TEXAS P.E. #104123

RW BUILDING CONSULTANTS, INC.
P.O. Box 230 Valrico FL 33595
Phone No.: 813.659.9197
TEXAS BOARD OF PROFESSIONAL ENGINEERS
CERTIFICATE OF REGISTRATION # F-11852

| | | | |
|----------------------|----------|-------------------------------|-----|
| PRODUCT: | | DOORSCAPES FIBERGLASS DOOR | |
| PART OR ASSEMBLY: | | ELEVATIONS | |
| NO. | DATE | DESCRIPTION | BY |
| 1 | 10/28/21 | UPDATE TO 2018 IBC/IRC CODE | LFS |
| REVISIONS | | | |
| DATE: 5/06/19 | | | |
| SCALE: N.T.S. | | | |
| DWG. BY: MT | | | |
| CHK. BY: LFS | | | |
| DRAWING NO.: TX-4934 | | | |
| SHEET 4 OF 9 | | | |



1
5 HORIZONTAL CROSS SECTION

2
5 HORIZONTAL CROSS SECTION

4
5 VERTICAL CROSS SECTION

3
5 HORIZONTAL CROSS SECTION

5
5 VERTICAL CROSS SECTION

NOTES:

- Sidelite attached @ 6" from each end plus 4 more screws equally spaced between (6 screws total per jamb).
- Sidelite attached @ 3" from each end (2 screws total @ head).



Documents Prepared By: Lyndon F. Schmidt, P.E.
TEXAS P.E. #104123

RW BUILDING CONSULTANTS, INC.
P.O. Box 230 Valrico FL 33595
Phone No.: 813.659.9197

TEXAS BOARD OF PROFESSIONAL ENGINEERS
CERTIFICATE OF REGISTRATION # F-11852

PRODUCT: DOORSCAPES
FIBERGLASS DOOR

PART OR ASSEMBLY:
HORIZONTAL & VERTICAL
CROSS SECTIONS

| NO. | DATE | REVISIONS | LFS | BY |
|-----|----------|-----------------------------|-----|----|
| 1 | 10/28/21 | UPDATE TO 2018 IBC/IRC CODE | LFS | BY |

DATE: 5/06/19

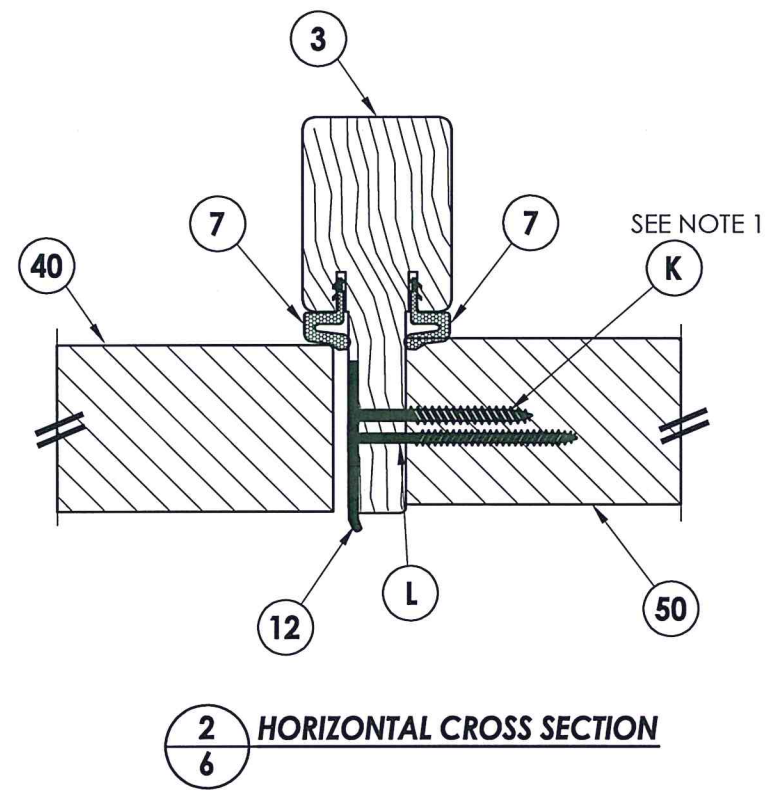
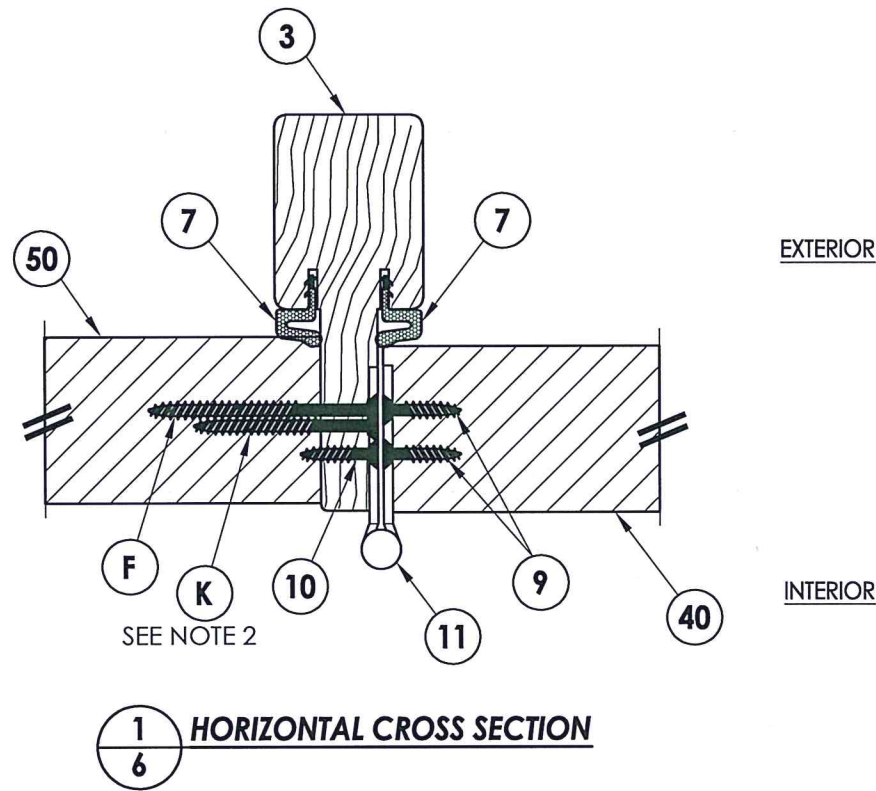
SCALE: N.T.S.

DWG. BY: MT

CHK. BY: LFS

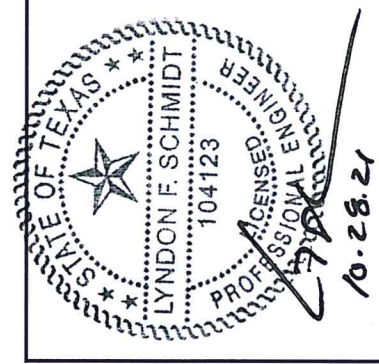
DRAWING NO.: TX-4934

SHEET 5 OF 9



NOTES:

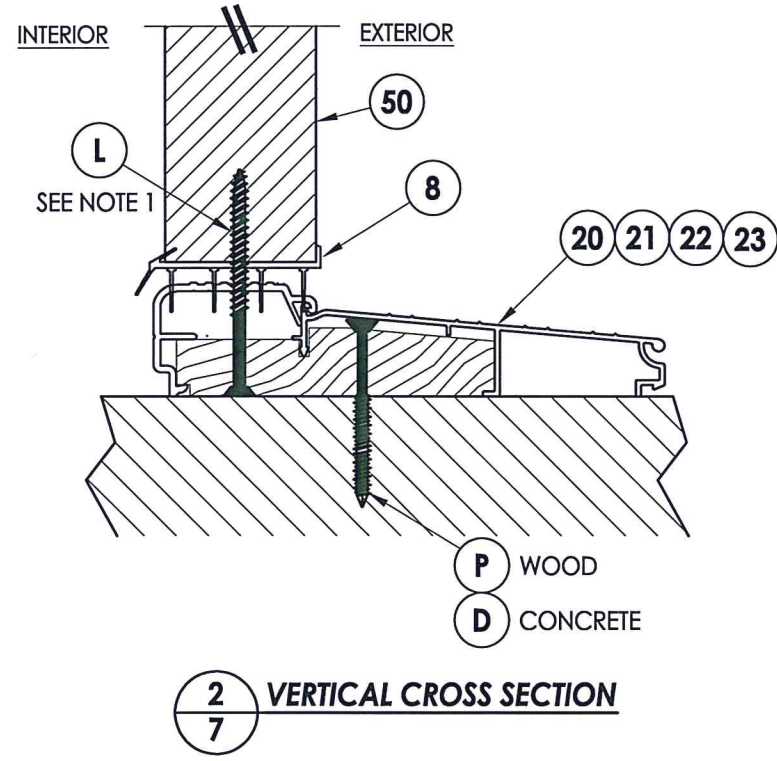
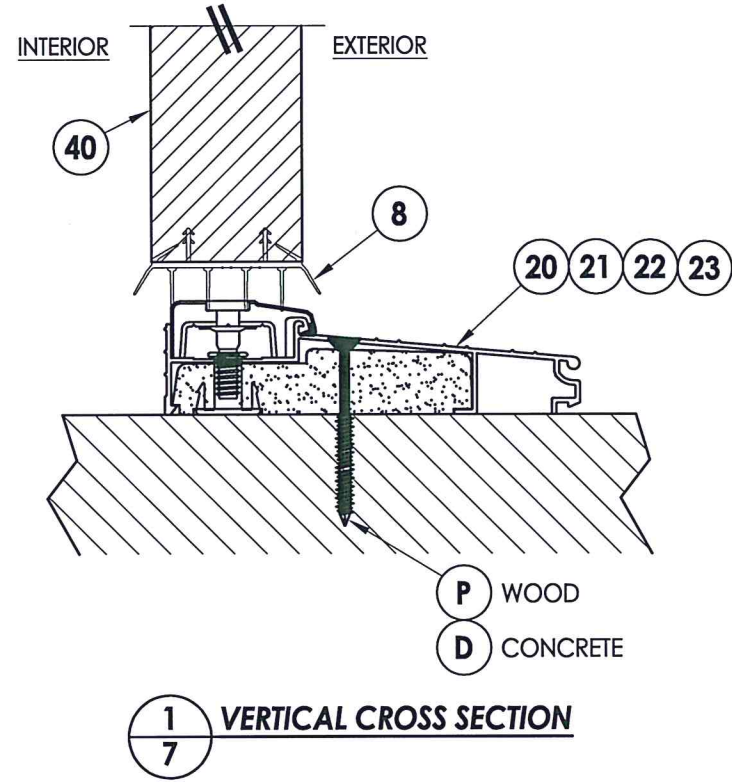
1. Sidelite attached @ 6" from each end plus 4 more screws equally spaced between (6 screws total per jamb).
2. Sidelite attached w/ 1 screw equally spaced between each hinge (2 screws total per mullion).



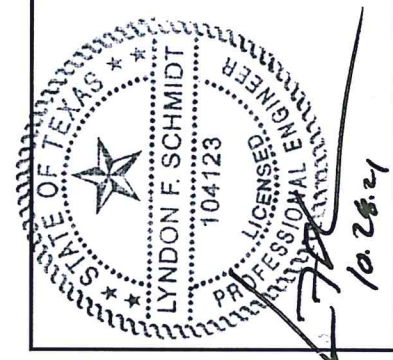
Documents Prepared By: Lyndon F. Schmidt, P.E.
TEXAS P.E. #104123

RW BUILDING CONSULTANTS, INC.
P.O. Box 230 Valrico FL, 33595
Phone No.: 813.659.9197
TEXAS BOARD OF PROFESSIONAL ENGINEERS
CERTIFICATE OF REGISTRATION # F-11852

| | |
|---|-----------------------------|
| PRODUCT: DOORSCAPES FIBERGLASS DOOR | |
| PART OR ASSEMBLY: HORIZONTAL CROSS SECTIONS | |
| NO. | BY |
| 1 | LFS |
| DATE | REVISIONS |
| 10/28/21 | UPDATE TO 2018 IBC/IRC CODE |
| DATE: 5/06/19 | |
| SCALE: N.T.S. | |
| DWG. BY: MT | |
| CHK. BY: LFS | |
| DRAWING NO.: TX-4934 | |
| SHEET 6 OF 9 | |



NOTE:
1. Sidelite attached @ 3" from each end (2 screws total @ sill).



Documents Prepared By: Lyndon F. Schmidt, P.E.
TEXAS P.E. #104123

RW BUILDING CONSULTANTS, INC.
P.O. Box 230 Valrico FL, 33595
Phone No.: 813.659.9197

TEXAS BOARD OF PROFESSIONAL ENGINEERS
CERTIFICATE OF REGISTRATION # F-11852

PRODUCT: DOORSCAPES FIBERGLASS DOOR

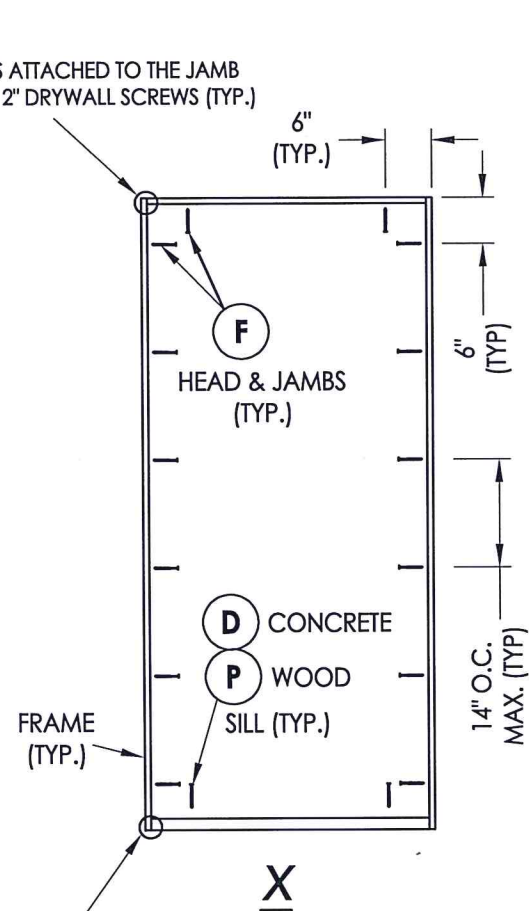
PART OR ASSEMBLY: VERTICAL CROSS SECTIONS

| NO. | DATE | REVISIONS |
|-----|----------|-----------------------------|
| 1 | 10/28/21 | UPDATE TO 2018 IBC/IRC CODE |
| | | LFS |
| | | BY |

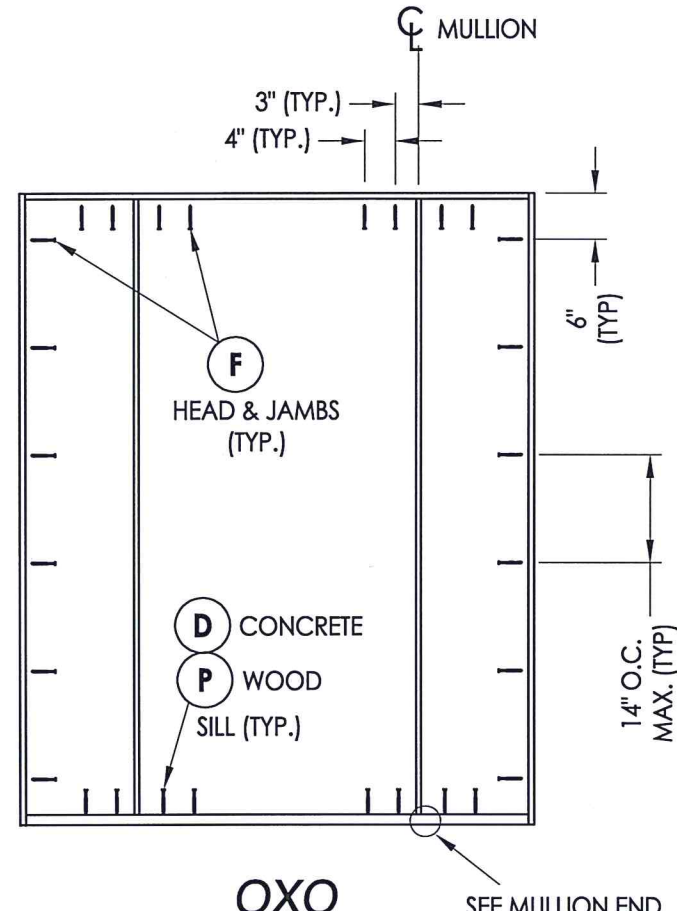
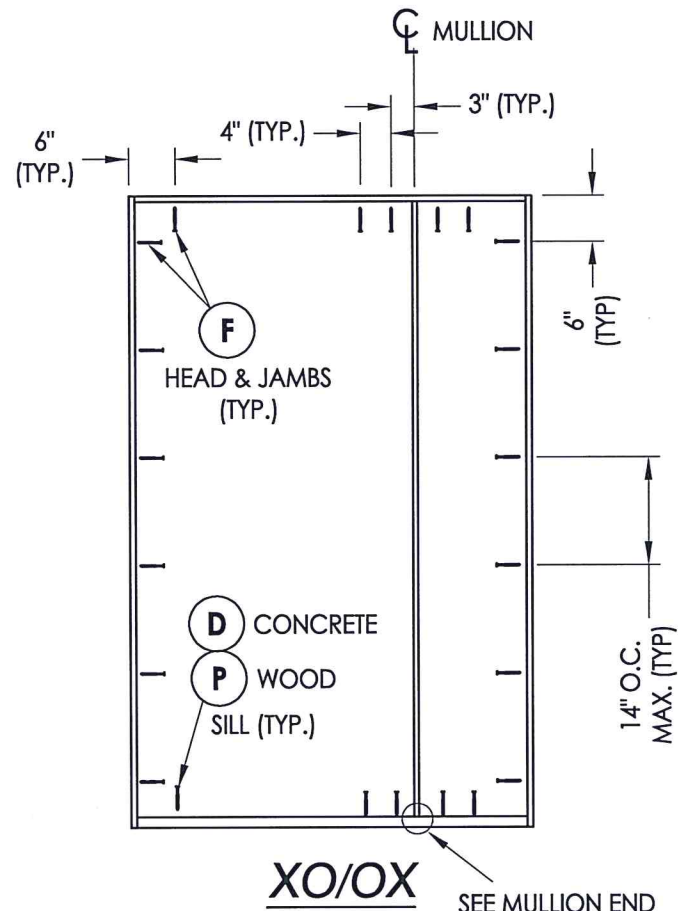
DATE: 5/06/19
SCALE: N.T.S.
DWG. BY: MT
CHK. BY: LFS
DRAWING NO.: TX-4934
SHEET 7 OF 9

Z:\Clients\Doorscapes\B - Texas Dept of Ins\TDI - DR 1060 Wood Non-Impact\C - Drawings\TX-4934.dwg

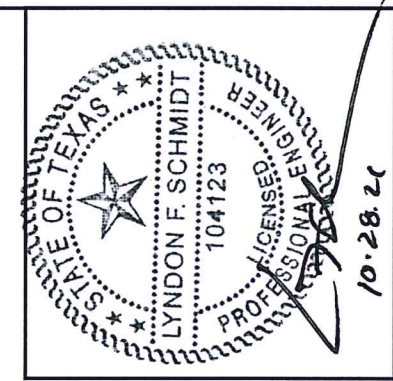
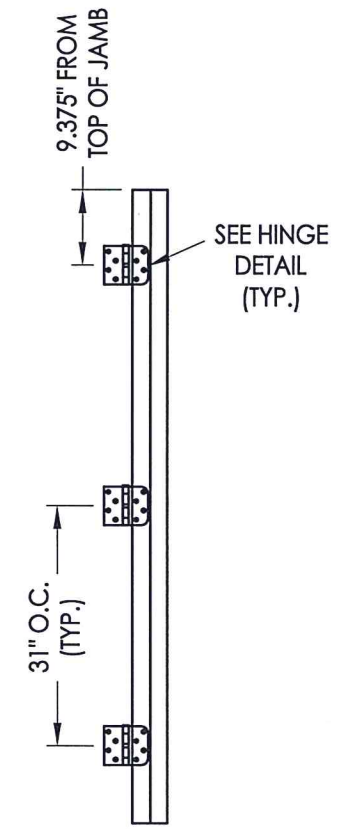
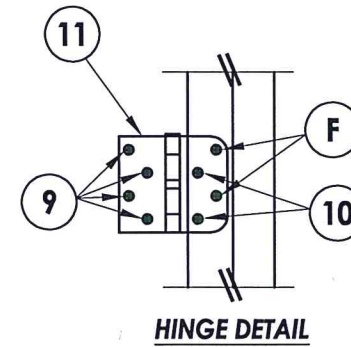
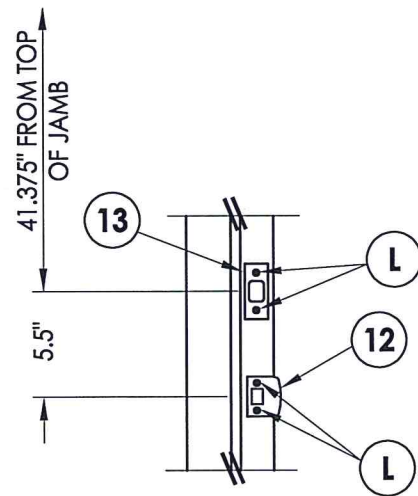
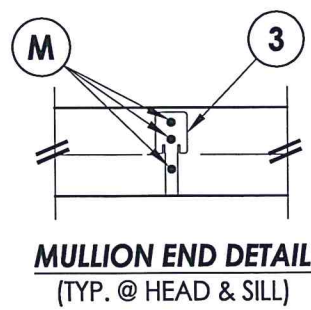
THE HEAD IS ATTACHED TO THE JAMB
w/ (4) #7 X 2" DRYWALL SCREWS (TYP.)



THE THRESHOLD IS ATTACHED TO THE JAMB
w/ (4) 7/16" X 2" STEEL CROWN STAPLES (TYP.)



FRAME ANCHORING



Documents Prepared By: Lyndon F. Schmidt, P.E.
TEXAS P.E. #104123

R.W. BUILDING CONSULTANTS, INC.
P.O. Box 230 Valrico FL, 33595
Phone No.: 813.659.9197

TEXAS BOARD OF PROFESSIONAL ENGINEERS
CERTIFICATE OF REGISTRATION # F-11852

PRODUCT: DOORSCAPES FIBERGLASS DOOR

PART OR ASSEMBLY: FRAME ANCHORING & HARDWARE DETAILS

| NO. | DATE | DESCRIPTION | BY |
|-----|----------|-----------------------------|-----|
| 1 | 10/28/21 | UPDATE TO 2018 IBC/IRC CODE | LFS |

DATE: 5/06/19

SCALE: N.T.S.

DWG. BY: MT

CHK. BY: LFS

DRAWING NO.: TX-4934

SHEET 8 OF 9

Z:\Clients\Doorscapes\B - Texas Dept of Ins\TDI - DR 1060 Wood Non-Impact\C - Drawings\TX-4934.dwg

BILL OF MATERIALS

| ITEM # | DESCRIPTION | MATERIAL |
|--------|---|-----------|
| A | 2X FRAMING (G >= 0.42) | WOOD |
| C | 1/4" MAX. SHIM SPACE | - |
| D | 1/4" Ø PFH DeWALT OR ITW CONCRETE SCREW (1-3/4" MIN. EMBEDMENT) | STEEL |
| F | #10 X 2-1/2" PFH WOOD SCREW (1.15" MIN. EMBEDMENT) | STEEL |
| K | #10 X 2" PFH WOOD SCREW | STEEL |
| L | #8 X 2-1/2" PFH WOOD SCREW | STEEL |
| M | #7 X 2-1/2" DRYWALL SCREW | STEEL |
| P | #10 PFH WOOD SCREW (1-1/2" MIN. EMB.) | STEEL |
| 1 | FINGER JOINT PINE JAMB (G >= 0.42) | WOOD |
| 3 | INTEGRAL MULLION - 1.625" WIDE (PINE, G >= 0.42) | WOOD |
| 4 | INTEGRAL MULLION - 2.5" WIDE (PINE, G >= 0.42) | WOOD |
| 7 | WEATHERSTRIP | FOAM |
| 8 | DOOR/SIDELITE BOTTOM SWEEP | VINYL |
| 9 | #9 X 1" PFH WOOD SCREW | STEEL |
| 10 | #10 X 3/4" PFH WOOD SCREW | STEEL |
| 11 | 4" X 4" BUTT HINGE | STEEL |
| 12 | LATCH STRIKE PLATE | STEEL |
| 13 | DEADBOLT STRIKE PLATE | STEEL |
| 20 | INSWING THRESHOLD (AFCO A-125) | ALUM/WOOD |
| 21 | INSWING THRESHOLD (AFCO A-125) | ALUM/COMP |
| 22 | INSWING THRESHOLD (AFCO A-276) | ALUM/WOOD |
| 23 | INSWING THRESHOLD (AFCO A-280) | ALUM/WOOD |
| 40 | DOOR PANEL - SEE DOOR PANEL DETAIL SHEET FOR DETAILS | - |
| 50 | SIDELITE PANEL - SEE SIDELITE PANEL DETAIL SHEET FOR DETAILS | - |

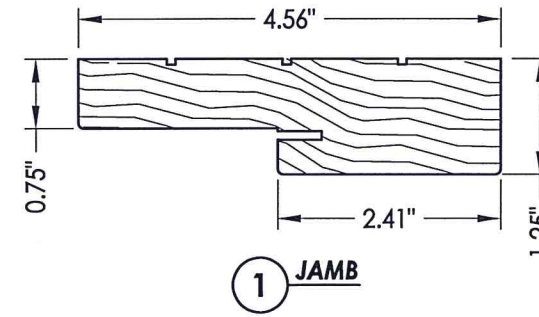
CONCRETE ANCHOR NOTES:

- Concrete anchor locations at the corners may be adjusted to maintain the min. edge distance to mortar joints.
- Concrete anchor locations noted as "MAX. ON CENTER" must be adjusted to mortar joints, additional concrete anchors may be required to ensure the "MAX. ON CENTER" dimension are not exceeded.
- Concrete anchor table:

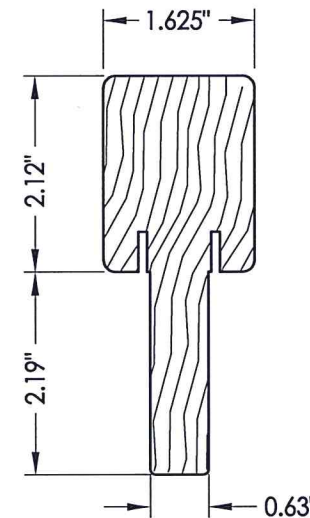
| ANCHOR TYPE | ANCHOR SIZE | MIN. EMBEDMENT | MIN. CLEARANCE TO MASONRY EDGE | MIN. CLEARANCE TO ADJACENT ANCHOR |
|---------------------|-------------|----------------|--------------------------------|-----------------------------------|
| ITW BUILDEX TAPCON® | 1/4" | 1-3/4" | 2" | 4" |
| DeWALT ULTRACON® | 1/4" | 1-3/4" | 1" | 4" |

WOOD SCREW INSTALLATION NOTES:

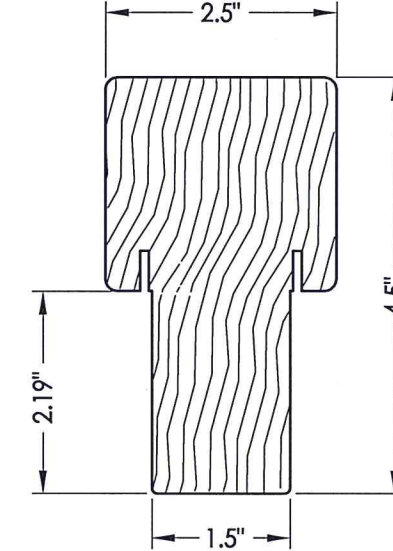
- Maintain a minimum 5/8" edge distance, 1" end distance, & 1" o.c. spacing of wood screws to prevent the splitting of wood.



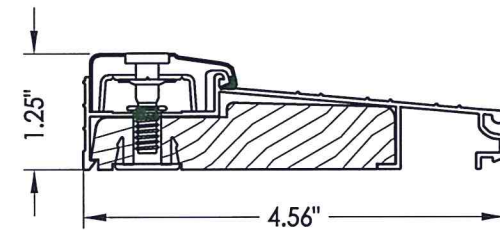
1 JAMB



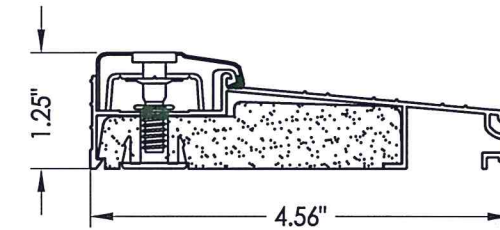
3 INTEGRAL MULLION
1.625" WIDTH



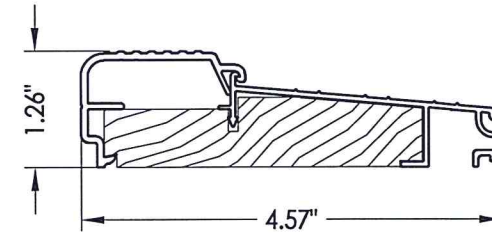
4 INTEGRAL MULLION
2.5" WIDTH



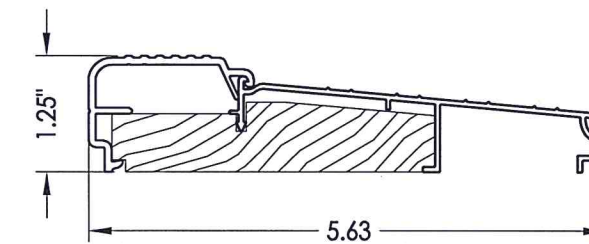
20 INSWING ADJUSTABLE THRESHOLD



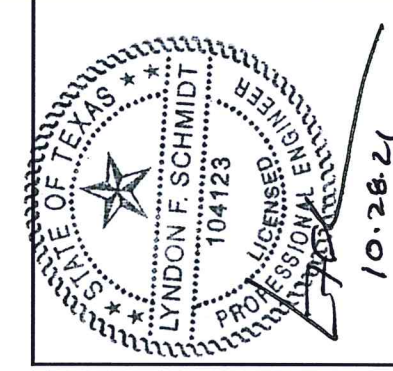
21 INSWING ADJUSTABLE THRESHOLD



22 INSWING FIXED THRESHOLD



23 INSWING FIXED THRESHOLD



Documents Prepared By: Lyndon F. Schmidt, P.E.
TEXAS P.E. #104123

RW BUILDING CONSULTANTS, INC.
P.O. Box 230 Valrico FL 33595
Phone No.: 813.659.9197

TEXAS BOARD OF PROFESSIONAL ENGINEERS
CERTIFICATE OF REGISTRATION # F-11852

| | | |
|-------------------|-----------------------------------|-----------------------------|
| PRODUCT: | DOORSCAPES FIBERGLASS DOOR | |
| PART OR ASSEMBLY: | BILL OF MATERIALS & COMPONENTS | |
| NO. | DATE | DESCRIPTION |
| 1 | 10/28/21 | UPDATE TO 2018 IBC/IRC CODE |
| | | REVISIONS |
| DATE: | 5/06/19 | |
| SCALE: | N.T.S. | |
| DWG. BY: | MT | |
| CHK. BY: | LFS | |
| DRAWING NO.: | TX-4934 | |
| SHEET | 9 | OF 9 |