

PRODUCT:

352 SERIES ALUM OUTSWING WET-GLAZED DOORS

W/ OR W/O TRANSOM
(LARGE MISSILE IMPACT)

REVN	DATE/REMARKS
2	01.28.2022

ENGINEER:



MCY ENGINEERING, INC.
GLAZING CONSULTANT

12781 MIRAMAR PARKWAY #301
MIRAMAR FL 33027
P: 305-271-0117
Email: MCY@mcyengineering.com
www.MCYEngineering.com

STAMP:



January 28th, 2022

PRODUCT CONTROL APPROVAL:

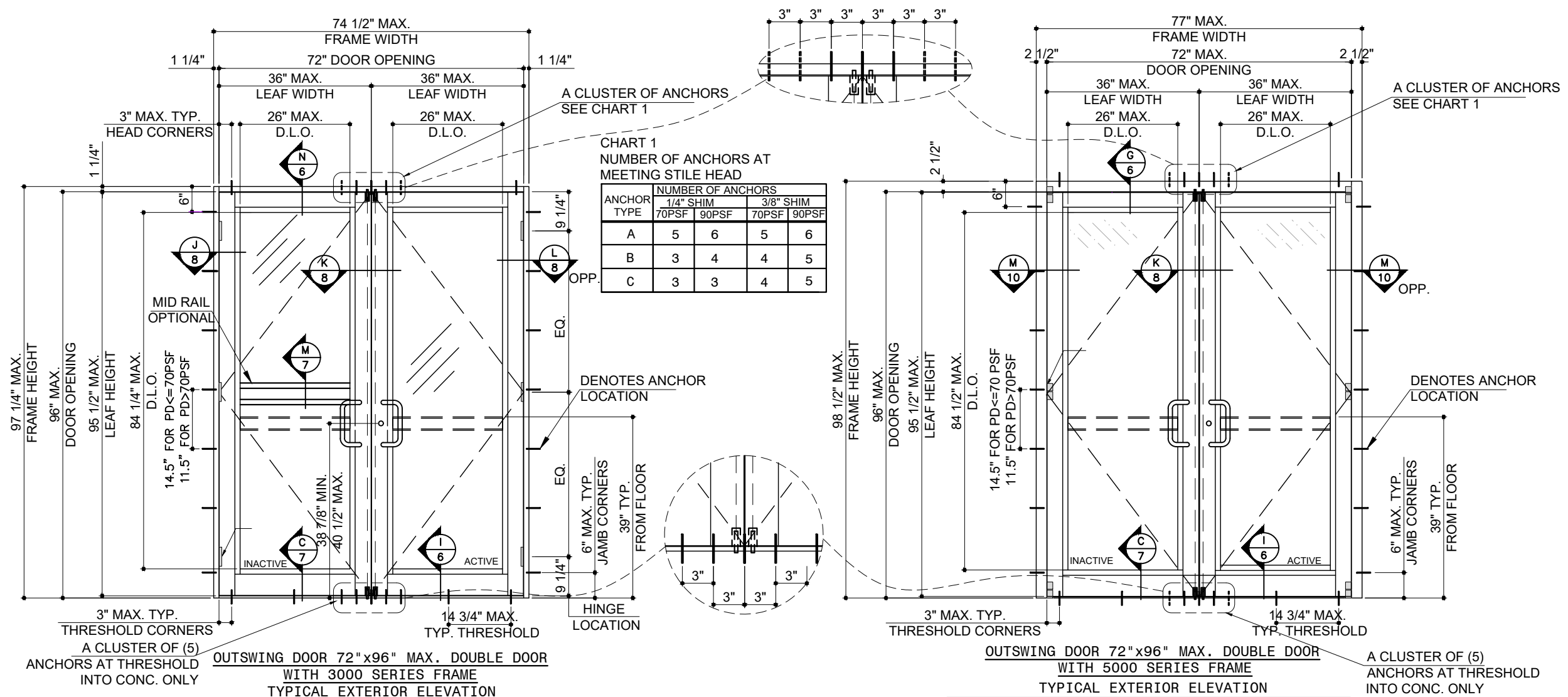
DRAWN: James

DATE: 01.28.2022

DWG: TA18-02

DRAWING No:

1 OF 13



MAX. DESIGN LOAD W/LOCK OPTIONS 1,2,3,4&5	MAX. DESIGN LOAD W/LOCK OPTIONS 4 & 5
+ 70 PSF	+ 80 PSF
- 70 PSF	- 90 PSF

MAX. DESIGN LOAD W/LOCK OPTIONS 1,2,3,4&5	MAX. DESIGN LOAD W/LOCK OPTIONS 4 & 5
+ 70 PSF	+ 80 PSF
- 70 PSF	- 90 PSF

SERIES 352 LARGE MISSILE IMPACT DOOR

- THIS PRODUCT HAS BEEN DESIGNED AND TESTED TO COMPLY WITH THE REQUIREMENTS OF 2018 INTERNATIONAL RESIDENTIAL CODE AND 2018 INTERNATIONAL BUILDING CODE WITH TEXAS REVISIONS EFFECTIVE Sep 01, 2020. INCLUDING HIGH VELOCITY HURRICANE ZONE (HVHZ)
- DOORS ARE RATED LARGE MISSILE IMPACT. SHUTTERS OR EXTERNAL PROTECTION DEVICES IS NOT REQUIRED.
- ULTIMATE DESIGN LOAD OBTAINED FROM ASCE 7-16, MULTIPLY BY 0.6, SHALL BE LESS THAN OR EQUAL TO MAX. DESIGN LOAD IN THE DOCUMENT.
- DOOR NOT APPROVED WHERE WATER INFILTRATION IS REQUIRED.
- 1X OR 2X WOOD BUCKS BY OTHERS, MUST BE ANCHORED PROPERLY TO TRANSFER LOADS TO THE STRUCTURE, TO BE REVIEWED BY BUILDING OFFICIAL.
- ANCHORING OR LOADING CONDITIONS NOT SHOWN IN THESE DETAILS ARE NOT PART OF THIS APPROVAL.
- A LOAD DURATION INCREASE IS USED IN DESIGN OF ANCHORS INTO WOOD ONLY.
- MATERIALS INCLUDING BUT NOT LIMITED TO STEEL/METAL SCREWS, THAT COME INTO CONTACT WITH OTHER DISSIMILAR MATERIALS SHALL MEET THE REQUIREMENTS OF 2018 INTERNATIONAL RESIDENTIAL CODE AND 2018 INTERNATIONAL BUILDING CODE WITH TEXAS REVISIONS EFFECTIVE Sep 01, 2020 SECTION AS APPLICABLE
- ANCHORS SHALL BE AS LISTED, SPACED AS SHOWN ON DETAILS. ANCHORS EMBEDMENT TO BASE MATERIAL SHALL BE BEYOND WALL DRESSING OR STUCCO.
- LIMITATION:
WHEN DOORS OR DOOR WITH TRANSOM ARE MULLED TO STOREFRONT (UNDER SEPARATE APPROVAL) LOWER DESIGN PRESSURE FROM DOOR, DOOR WITH TRANSOM OR STOREFRONT SHALL GOVERN IN THE ENTIRE ASSEMBLY.
- WHERE APPLICABLE:
EGRESS REQUIREMENTS TO BE REVIEWED BY BUILDING OFFICIAL.

LIMITATIONS OF USE

- THIS PRODUCT EVALUATION DOCUMENT (P.E.D.) PREPARED BY THIS ENGINEER IS GENERIC AND DOES NOT PROVIDE INFORMATION FOR A SITE SPECIFIC PROJECT; i.e. WHERE THE SITE CONDITIONS DEVIATE FROM THE P.E.D.
- CONTRACTOR TO BE RESPONSIBLE FOR THE SELECTION, PURCHASE AND INSTALLATION OF THIS PRODUCT BASED ON THIS PRODUCT EVALUATION PROVIDED HE/SHE DOES NOT DEVIATE FROM THE CONDITIONS DETAILED ON THIS DOCUMENT.
- THIS PRODUCT EVALUATION DOCUMENT WILL BE CONSIDERED INVALID IF ALTERED BY ANY MEANS.
- SITE SPECIFIC PROJECTS SHALL BE PREPARED BY A TEXAS REGISTERED ENGINEER OR ARCHITECT WHICH WILL BECOME THE ENGINEER OF RECORD (E.O.R.) FOR THE PROJECT AND WHO WILL BE RESPONSIBLE FOR THE PROPER USE OF THE P.E.D.
- THIS P.E.D. SHALL BEAR THE DATE AND ORIGINAL SEAL AND SIGNATURE OF THE PROFESSIONAL ENGINEER OF RECORD THAT PREPARED IT.

PRODUCT:

352 SERIES ALUM OUTSWING WET-GLAZED DOORS

W/ OR W/O TRANSOM
(LARGE MISSILE IMPACT)

REVN	DATE/REMARKS
2	01.28.2022

ENGINEER:



MCY ENGINEERING, INC.
GLAZING CONSULTANT

12781 MIRAMAR PARKWAY #301
MIRAMAR FL 33027
P: 305-271-0117
Email: MCY@mcyengineering.com
www.MCYEngineering.com

STAMP:

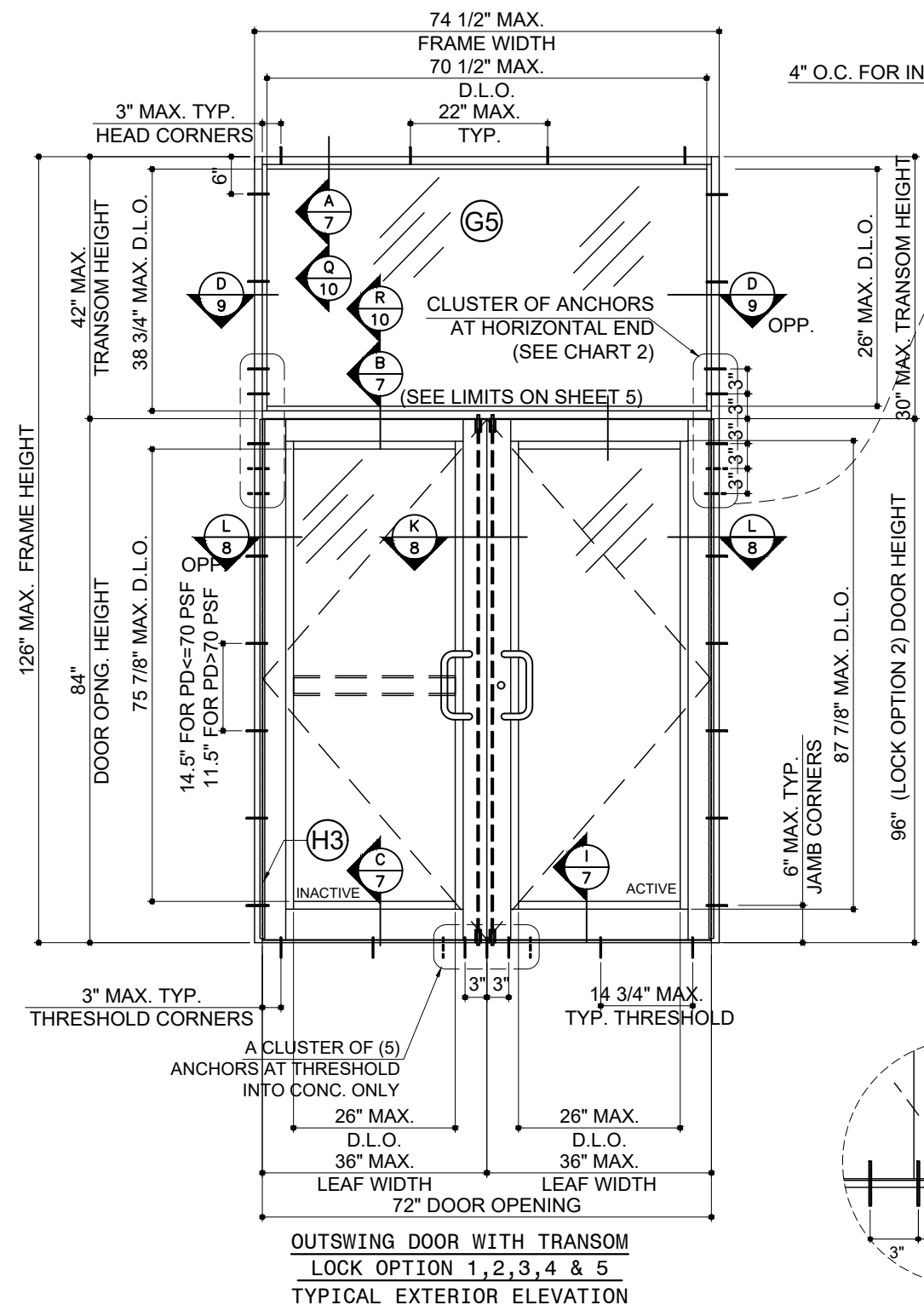


January 28th, 2022

PRODUCT CONTROL APPROVAL:

DRAWN: James
DATE: 01.28.2022
DWG: TA18-02

DRAWING No:
2 OF 13



MAX. DESIGN LOAD	
LOCK OPTIONS 1, 2, 3, 4 & 5	
+ 70 PSF	
- 70 PSF	

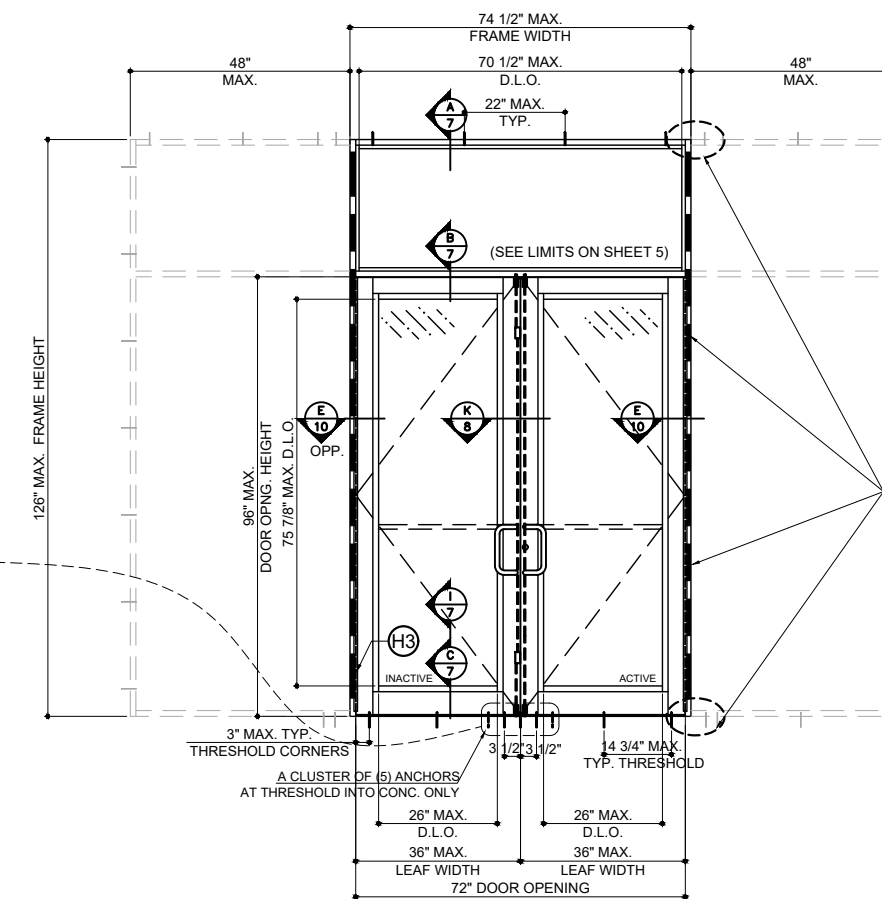
NOTE: 351X DOOR FRAME CAN BE USED ON THIS DOOR.

ANCHOR TYPE	SUBSTRATE	NUMBER OF ANCHORS	
		1/4" SHIM	3/8" SHIM
A	WOOD	5	5
B	CONC.	3	4
B	BLOCK	6	6
C	METAL	3	4

CHART 2 NUMBER OF ANCHORS AT TRANSOM END

OUTSWING SINGLE DOOR WITH TRANSOM ELEVATION

MAX. DESIGN LOAD	
+ 70 PSF	
- 70 PSF	



SIDELITE, MULLION REINFORCEMENT AND ANCHORS REFER TO SEPARATE PRODUCT APPROVAL.

WHEN DOORS OR DOOR WITH TRANSOM ARE MULLED TO STOREFRONT (UNDER SEPARATE APPROVAL) LOWER DESIGN PRESSURE FROM DOOR, DOOR WITH TRANSOM OR STOREFRONT SHALL CONTROL FOR THE ENTIRE ASSEMBLY.

MAX. DESIGN LOAD	
+ 70 PSF	
- 70 PSF	

DOOR OPTIONS

PRODUCT:

352 SERIES ALUM OUTSWING WET-GLAZED DOORS

W/ OR W/O TRANSOM
(LARGE MISSILE IMPACT)

REVN	DATE/REMARKS
2	01.28.2022

ENGINEER:



MCY ENGINEERING, INC.
GLAZING CONSULTANT

12781 MIRAMAR PARKWAY #301
MIRAMAR FL33027
P: 305-271-0117
Email: MCY@mcyengineering.com
www.MCYEngineering.com

STAMP:

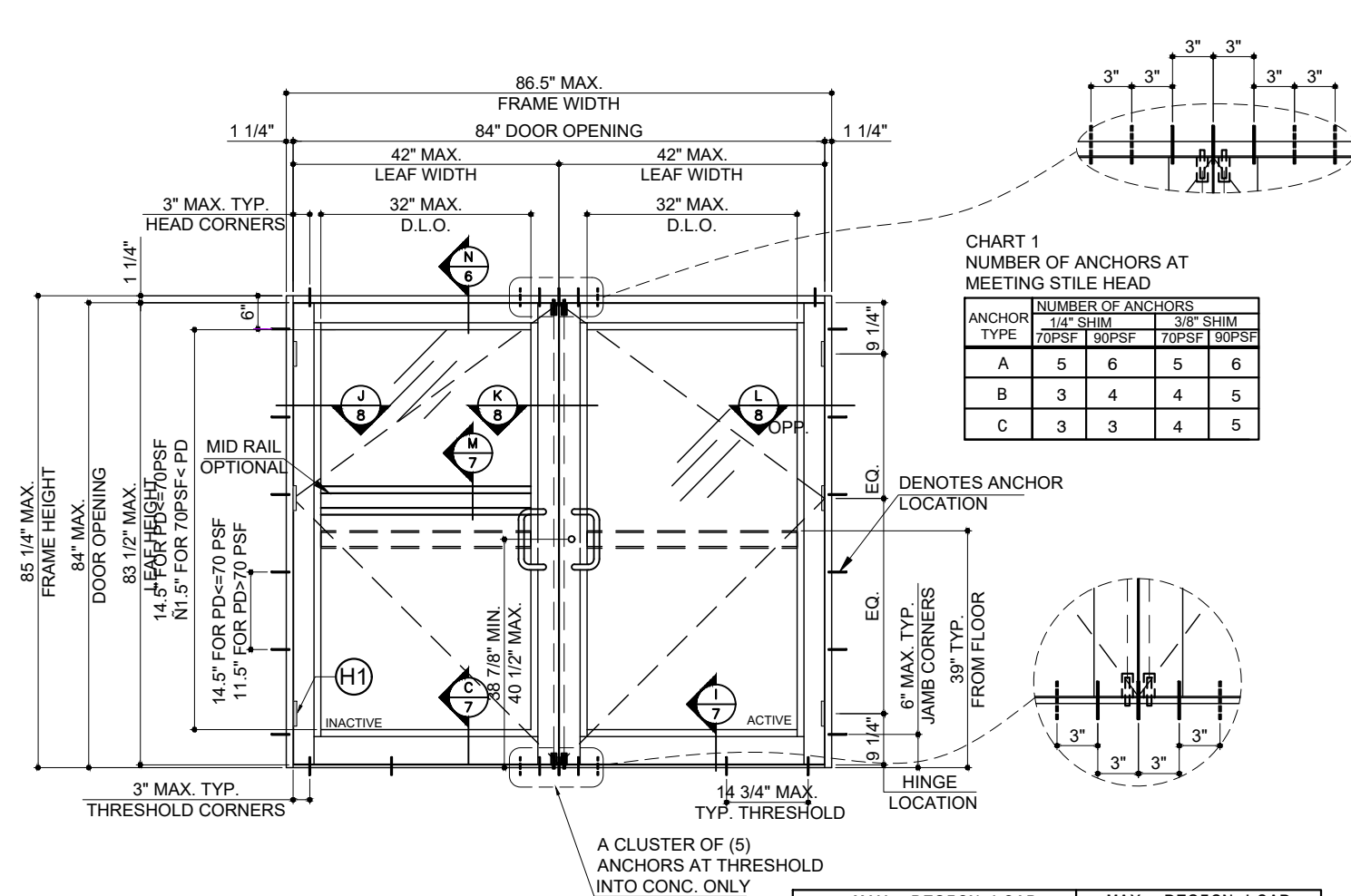


January 28th, 2022

PRODUCT CONTROL APPROVAL:

DRAWN: James
DATE: 01.28.2022
DWG: TA18-02

DRAWING No:
3 OF 13

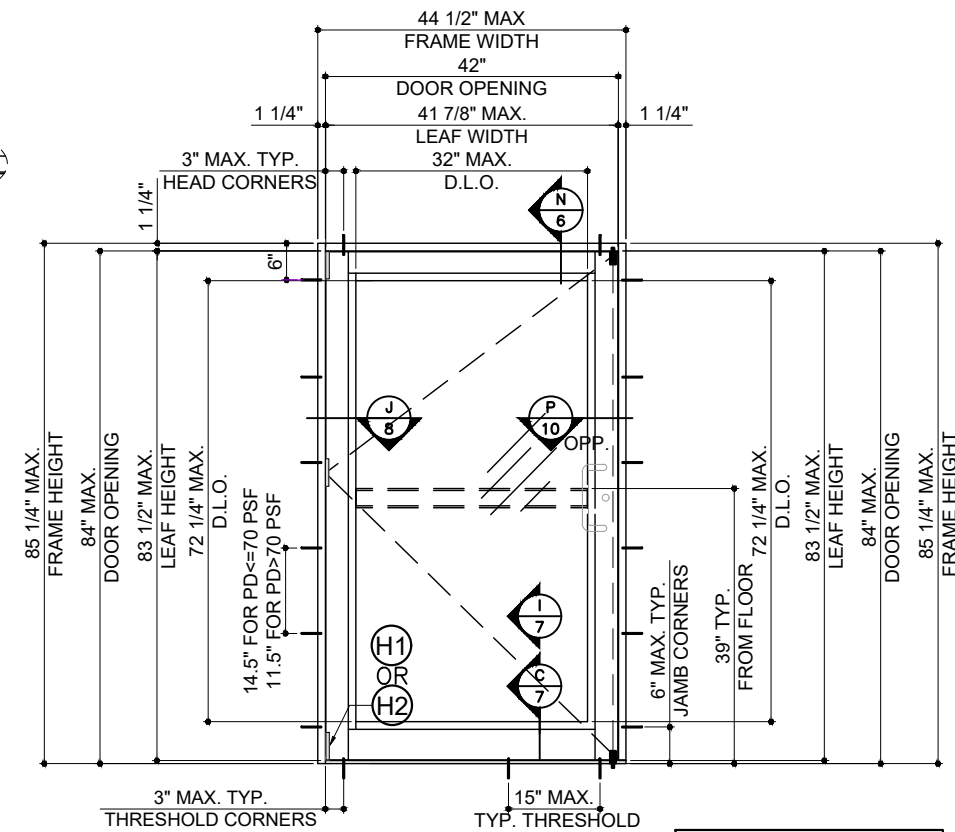


OUTSWING DOOR 96"x84" MAX. DOUBLE DOOR
WITH 3000 SERIES FRAME
TYPICAL EXTERIOR ELEVATION

	MAX. DESIGN LOAD W/LOCK OPTIONS 1,2,3,4&5 (SEE SHEET 3)	MAX. DESIGN LOAD W/LOCK OPTIONS 4 & 5 (SEE SHEET 3)
	+ 70 PSF	+78 PSF
	- 70 PSF	-88 PSF

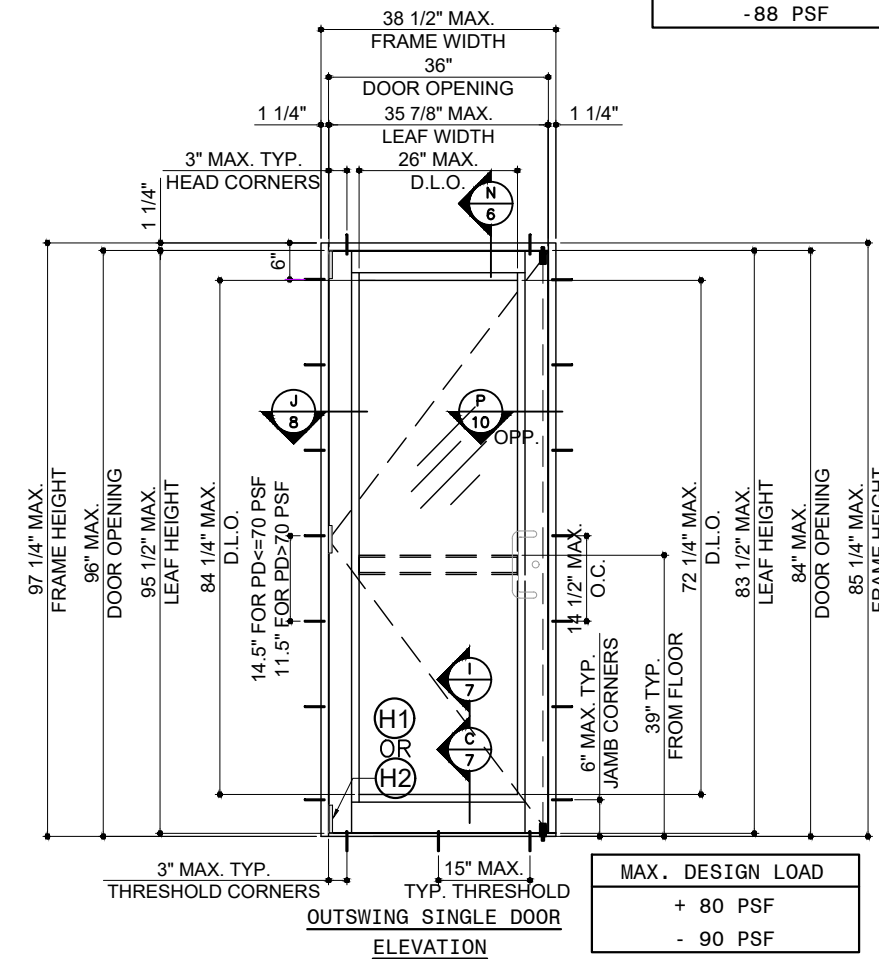
CHART 1
NUMBER OF ANCHORS AT
MEETING STILE HEAD

ANCHOR TYPE	NUMBER OF ANCHORS			
	1/4" SHIM 70PSF	3/8" SHIM 90PSF	3/8" SHIM 70PSF	3/8" SHIM 90PSF
A	5	6	5	6
B	3	4	4	5
C	3	3	4	5



OUTSWING SINGLE DOOR
ELEVATION

MAX. DESIGN LOAD
+ 78 PSF
-88 PSF



OUTSWING SINGLE DOOR
ELEVATION

MAX. DESIGN LOAD
+ 80 PSF
- 90 PSF

PRODUCT:

352 SERIES ALUM OUTSWING WET-GLAZED DOORS

W/ OR W/O TRANSOM
(LARGE MISSILE IMPACT)

REVN	DATE/REMARKS
2	01.28.2022

ENGINEER:



MCY ENGINEERING, INC.
GLAZING CONSULTANT

12781 MIRAMAR PARKWAY #301
MIRAMAR FL33027

P: 305-271-0117
Email: MCY@mcyengineering.com
www.MCYEngineering.com

STAMP:

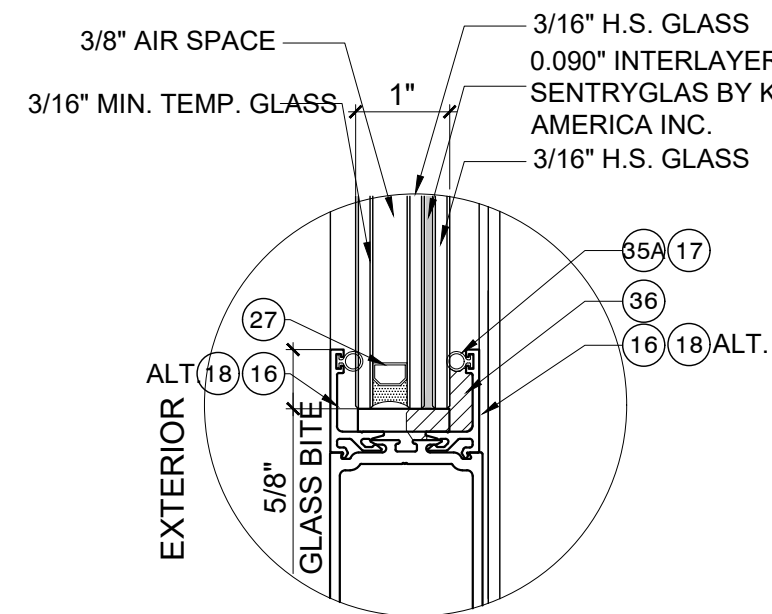


January 28th, 2022

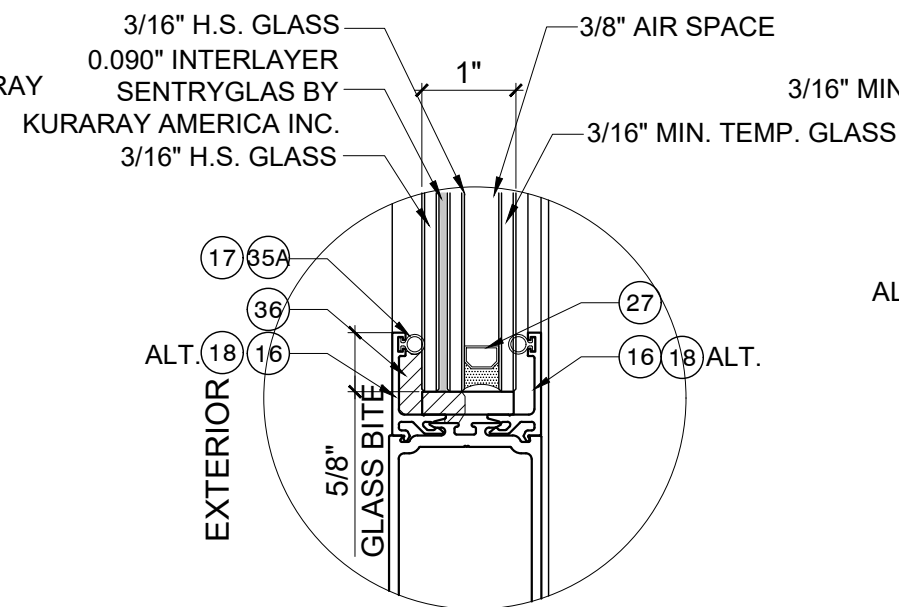
PRODUCT CONTROL APPROVAL:

DRAWN: James
DATE: 01.28.2022
DWG: TA18-02

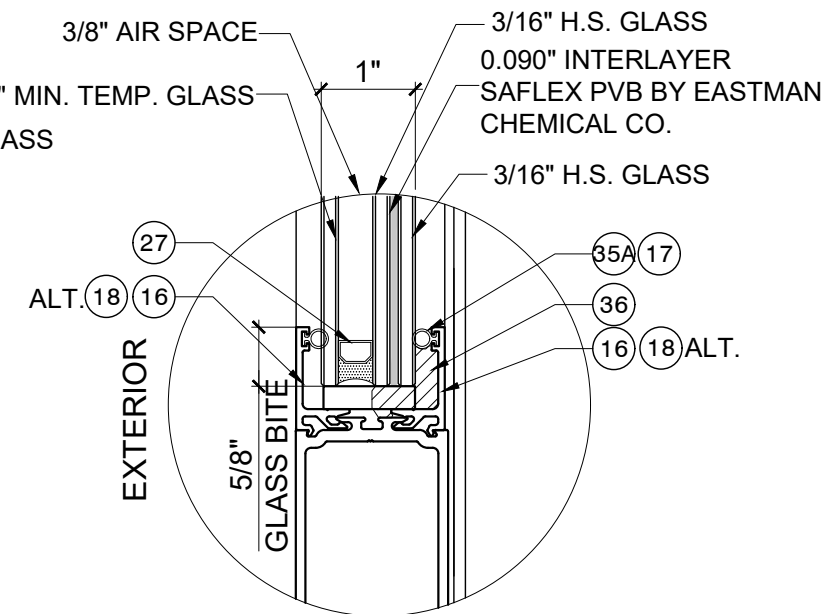
DRAWING No:
4 OF 13



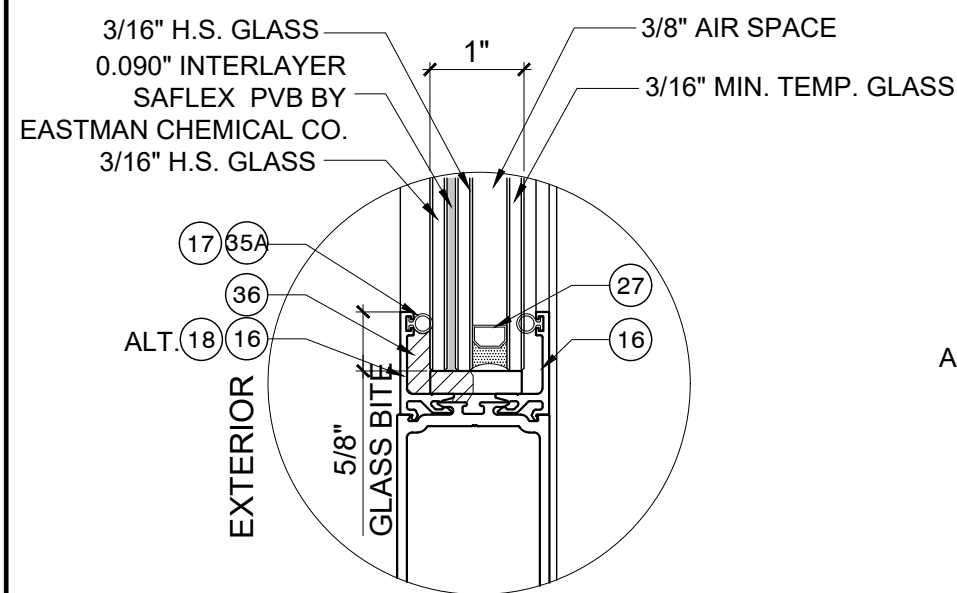
G1 1" INSULATED LAMINATED
GLASS GLAZING DETAIL DOOR
LEAF (ACT/INACT)



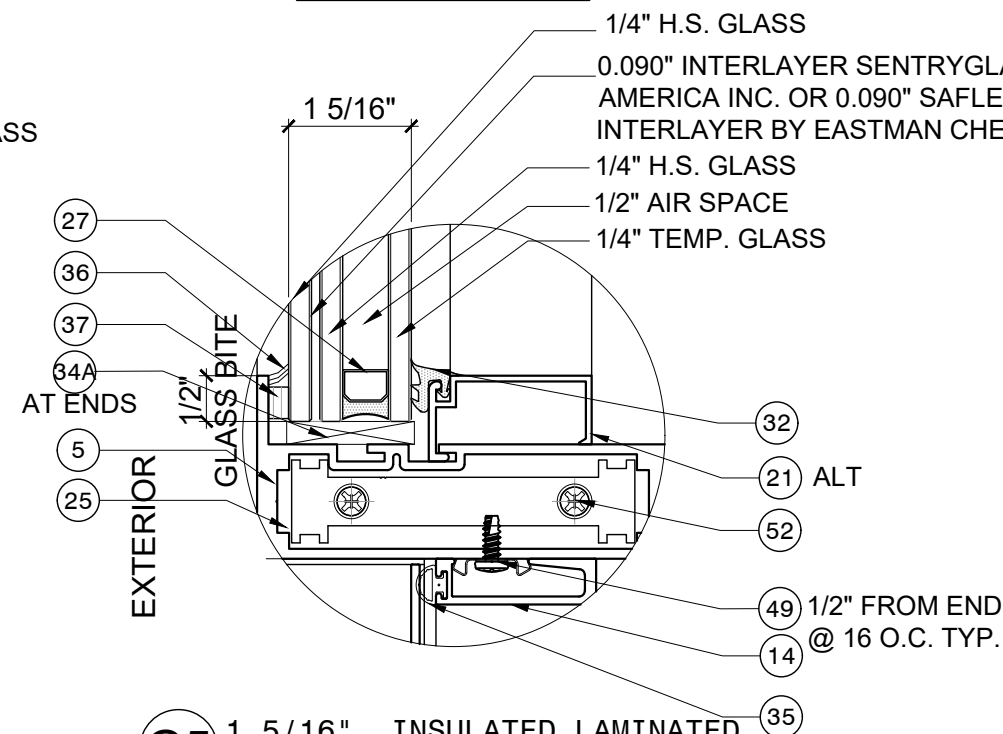
G2 1" INSULATED LAMINATED
GLASS GLAZING DETAIL DOOR
LEAF (ACT/INACT)



G3 1" INSULATED LAMINATED
GLASS GLAZING DETAIL DOOR
LEAF (ACT/INACT)



G4 1" INSULATED LAMINATED
GLASS GLAZING DETAIL DOOR
LEAF (ACT/INACT)



G5 1 5/16" INSULATED LAMINATED
GLAZING DETAIL AT TRANSOM

NOTE:
GLAZING COMPLIES WITH ASTM E1300-09.

LOCKS:

LOCK OPTION 1(ACTIVE/INACTIVE PANEL): AHT 8000 CVR TWO POINT LOCK SYSTEM WITH STRIKE PLATES AND ACTIVATING SURFACE MOUNT METALLIC INTERIOR PANIC DEVICE AND REGENT KEY OPERATOR ON THE EXTERIOR

LOCK OPTION 2(ACTIVE/INACTIVE PANEL): FALCON DOOR-O-MATIC 1690 CVR TWO POINT LOCK SYSTEM WITH STRIKE PLATES AND ACTIVATING SURFACE MOUNT METALLIC PANIC DEVICE ON THE INTERIOR

LOCK OPTION 3(ACTIVE/INACTIVE PANEL): VON DUPRIN 9947 CVR TWO POINT LOCK SYSTEM WITH TOP/BOTTOM STRIKE PLATES AND ACTIVATING SURFACE MOUNT METALLIC PANIC DEVICE ON THE INTERIOR AND SCHLAGE STANDARD KEY OPERATOR ON THE EXTERIOR

LOCK OPTION 4:

INACTIVE PANEL: ADAMS RITE MS1880, MS1881 OR ILCO 1880 CONCEALED TWO POINT LOCK SYSTEM WITH VERTICAL ROD AND THUMB TURN (INTERIOR).

ACTIVE PANEL: ADAMS RITE MS1850 OR ILCO 185 WITH AR4016 OR ILCO 4016 TOP ROD AND AR4015 OR ILCO 4015 BOTTOM RODS CONCEALED THREE POINT LOCK SYSTEM , WITH EIGHT PLY HOOK LOCK, KEY OPERATOR ON THE EXTERIOR AND THUMB TURN ON THE INTERIOR

LOCK OPTION 5:

INACTIVE PANEL: REGENT ML-207-TT-2PT TWO POINT LOCK SYSTEM WITH EIGHT PLY HOOK LOCK. THUMB TURN ON THE INTERIOR CAN NOT APPLY TO SINGLE PANEL DOOR

ACTIVE PANEL: REGENT ML-207-012, CONCEALED THREE POINT LOCK SYSTEM WITH EIGHT PLY HOOK LOCK, KEY OPERATOR ON THE EXTERIOR AND THUMB TURN ON THE INTERIOR

HINGES: REFER TO DETAILS (H1) (H2) & (H3) ON SHEET 7 OF 11

HINGE OPTION 1: (32) H1: (3) 4 1/2" BUTT HINGES (26298)
9 1/4" FROM TOP & BOTTOM, CENTERED

HINGE OPTION 2: (31) H2: OFFSET CAST ALUMINUM PIVOT HINGES
TOP (H160X)
BOTTOM (H160X)
MIDSPAN (2456x)

HINGE OPTION 3: (33) H3: CONTINUOUS ALUMINUM GEAR (60095)

TYPICAL ANCHORS: SEE ELEV. FOR SPACING

TYPE A: 1/4" DIA. ULTRACON+ (Fu=164 ksi Fy=148 ksi)
OR 1/4" DIA. TAPCON (Fu=120 ksi Fy=92 ksi)

- THRU 1BY OR 2BY WOOD BUCKS
1-3/4" MIN. EMBED INTO CONC.@ HEAD/SILL
1-3/4" MIN. EMBED INTO CONC./MASONRY @ JAMB
- INTO 2X WOOD BUCKS OR WOOD STRUCTURAL
1-1/2" MIN. EMBED @ HEAD AND JAMB

TYPE B: 1/4" DIA. ULTRACON+ (Fu=164 ksi Fy=148 ksi)
OR 1/4" DIA. TAPCON (Fu=120 ksi Fy=92 ksi)

- DIRECTLY INTO CONCRETE 1-3/4" MIN. EMBED @ HEAD/SILL
1-3/4" MIN. EMBED INTO CONC./MASONRY @ JAMB

TYPE C: 1/4" TEK OR SELF DRILLING SCREWS(GRADE 5 FU=120ksi FY=92ksi)

- INTO METAL STRUCTURES (HEAD/JAMB)
STEEL : 1/8" MIN. THICKNESS (Fy = 36 ksi MIN.)
ALUMINUM : 1/8" THK. MIN. (6063-T5 MIN.)
(STEEL IN CONTACT WITH ALUMINUM TO BE PLATED OR PAINTED)

MIN. EDGE DISTANCES

INTO CONCRETE AND MASONRY = 2 1/2"
INTO WOOD STRUCTURE = 1"
INTO METAL STRUCTURE = 3/4"
CONCRETE f'c = 3000 PSI MIN.
MASONRY C-90 f'c = 2000 PSI MIN.
WOOD SG= 0.55

SEALANTS:

ALL FRAME AND PANEL JOINT, INSTALLATION SCREWS AND HEADS OF ANCHOR SCREWS AT SILL TO BE SEALED WITH CLEAR SEALANT.

1X OR 2X WOOD BUCKS AND METAL STRUCTURES BY OTHERS MUST SUPPORT LOADS IMPOSED BY GLAZING SYSTEMS AND TRANSFER THEM TO THE BUILDING STRUCTURE.



http://www.trulite.com

403 WESTPARK CT. SUITE 201
PEACHTREE CITY, GA 30269
p. 800-432-8132 | f. 954-724-2083

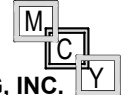
PRODUCT:

**352 SERIES
ALUM OUTSWING
WET-GLAZED
DOORS**

W/ OR W/O TRANSOM
(LARGE MISSILE IMPACT)

REV#	DATE/REMARKS
2	01.28.2022

ENGINEER:



MCY ENGINEERING, INC.
GLAZING CONSULTANT

12781 MIRAMAR PARKWAY #301
MIRAMAR FL33027
P: 305-271-0117
Email: MCY@mcyengineering.com
www.MCYEngineering.com

STAMP:



January 28th, 2022

PRODUCT CONTROL APPROVAL:

DRAWN: James DRAWING No:
DATE: 01.28.2022 **5 OF 13**
DWG: TA18-02

PRODUCT:

**352 SERIES
ALUM OUTSWING
WET-GLAZED
DOORS**

W/ OR W/O TRANSOM
(LARGE MISSILE IMPACT)

REVN	DATE/REMARKS
2	01.28.2022

ENGINEER:



MCY ENGINEERING, INC.
GLAZING CONSULTANT

12781 MIRAMAR PARKWAY #301
MIRAMAR FL33027

P: 305-271-0117
Email: MCY@mcyengineering.com
www.MCYEngineering.com

STAMP:

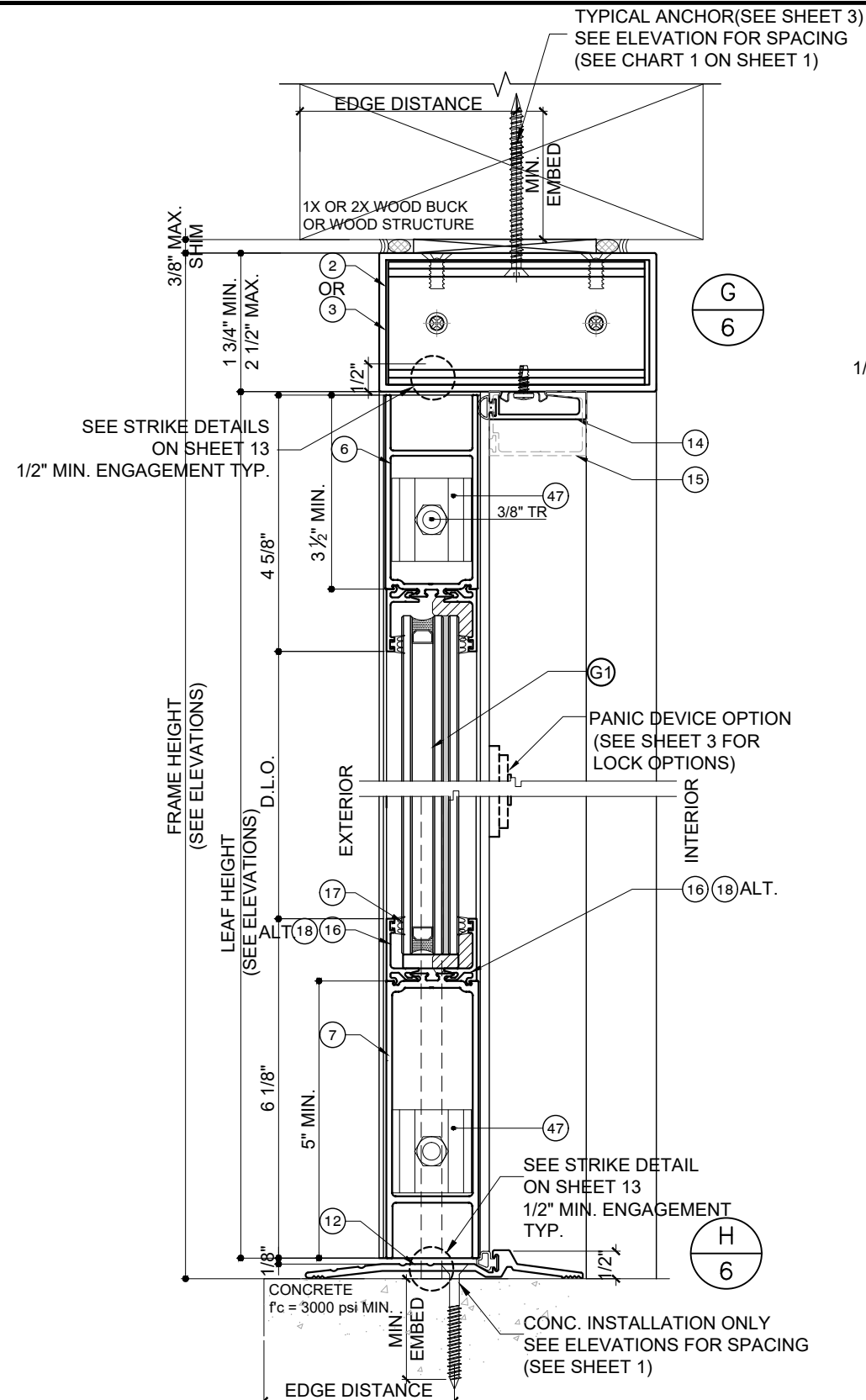


January 28th, 2022

PRODUCT CONTROL APPROVAL:

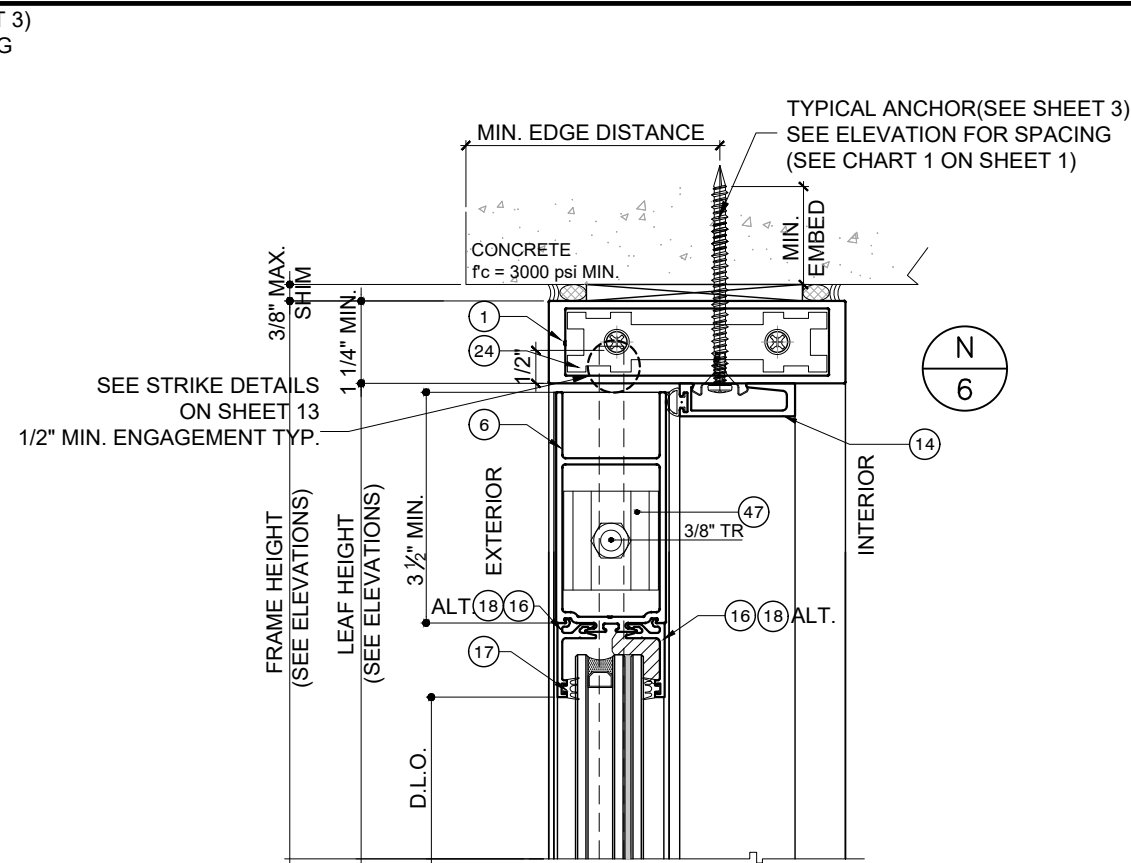
DRAWN: James
DATE: 01.28.2022
DWG: TA18-02

DRAWING No:
6 OF 13



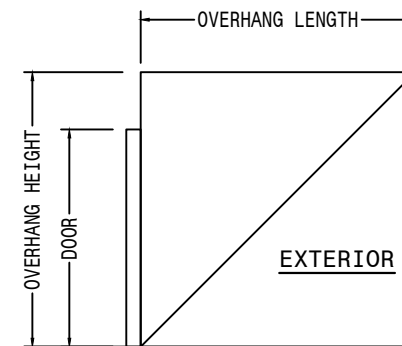
**5" BUMPER THRESHOLD
NON-WATER RATING**

NOTE: ADA COMPLIANT TO BE REVIEWED BY BUILDING OFFICIAL. INSTALL WHERE WATER INFILTRATION IS NOT REQUIRED OR MEET NOTE #1 ON SHEET 6 OF 13.



EPDM GASKETS USED IN THIS FENESTRATION PRODUCT ARE IN COMPLIANCE WITH ASTM STANDARD C864.

NOTE #1:
UNITS WHERE WATER INFILTRATION IS REQUIRED MUST BE INSTALLED AT LOCATIONS PROTECTED BY AN OVERHANG MEETING CRITERIA AS PER ILLUSTRATION BELOW OR IN NON-HABITABLE AREAS WHERE WATER INFILTRATION IS ACCEPTABLE. IT IS APPLIED TO 4" NON-WATER RATING SADDLE THRESHOLD (DETAIL C/5). AND 4" (DETAIL I/5) OR 5" (DETAIL H/4)



$$OH \text{ RATIO} = \frac{\text{OVERHANG LENGTH}}{\text{OVERHANG HEIGHT}} \geq 1$$

PRODUCT:

352 SERIES ALUM OUTSWING WET-GLAZED DOORS

W/ OR W/O TRANSOM
(LARGE MISSILE IMPACT)

REVN	DATE/REMARKS
2	01.28.2022

ENGINEER:



MCY ENGINEERING, INC.
GLAZING CONSULTANT

12781 MIRAMAR PARKWAY #301
MIRAMAR FL33027
P: 305-271-0117
Email: MCY@mcyengineering.com
www.MCYEngineering.com

STAMP:



January 28th, 2022

PRODUCT CONTROL APPROVAL:

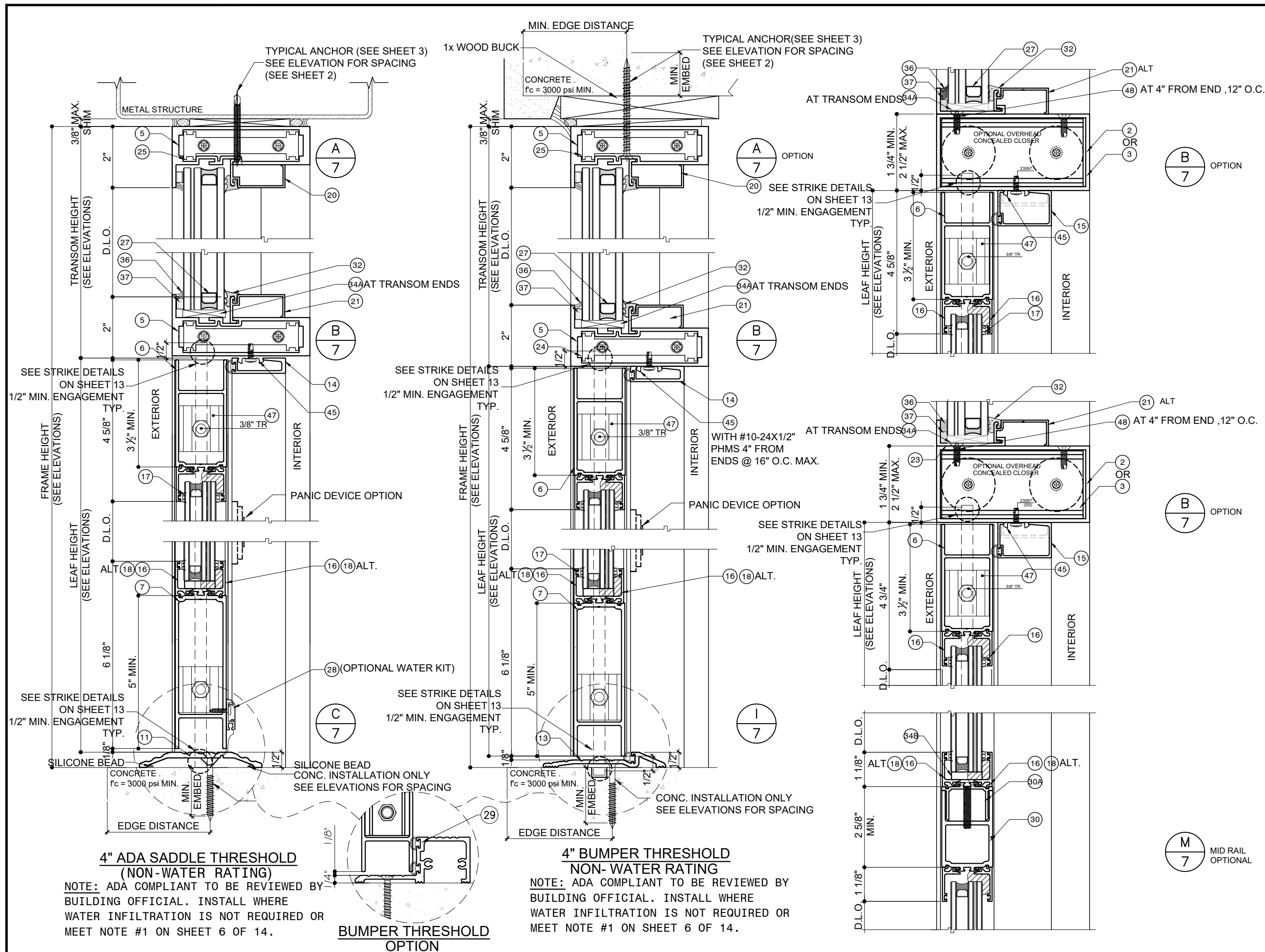
DRAWN: James

DRAWING No:

DATE: 01.28.2022

7 OF 13

DWG: TA18-02



4" ADA SADDLE THRESHOLD (NON-WATER RATING)

NOTE: ADA COMPLIANT TO BE REVIEWED BY BUILDING OFFICIAL. INSTALL WHERE WATER INFILTRATION IS NOT REQUIRED OR MEET NOTE #1 ON SHEET 6 OF 14.

BUMPER THRESHOLD OPTION

4" BUMPER THRESHOLD NON-WATER RATING

NOTE: ADA COMPLIANT TO BE REVIEWED BY BUILDING OFFICIAL. INSTALL WHERE WATER INFILTRATION IS NOT REQUIRED OR MEET NOTE #1 ON SHEET 6 OF 14.

PRODUCT:

352 SERIES ALUM OUTSWING WET-GLAZED DOORS

W/ OR W/O TRANSOM
(LARGE MISSILE IMPACT)

REVN	DATE/REMARKS
2	01.28.2022

ENGINEER:

MCY ENGINEERING, INC.
GLAZING CONSULTANT

12781 MIRAMAR PARKWAY #301
MIRAMAR FL33027
P: 305-271-0117
Email: MCY@mcyengineering.com
www.MCYEngineering.com

STAMP:



January 28th, 2022

PRODUCT CONTROL APPROVAL:

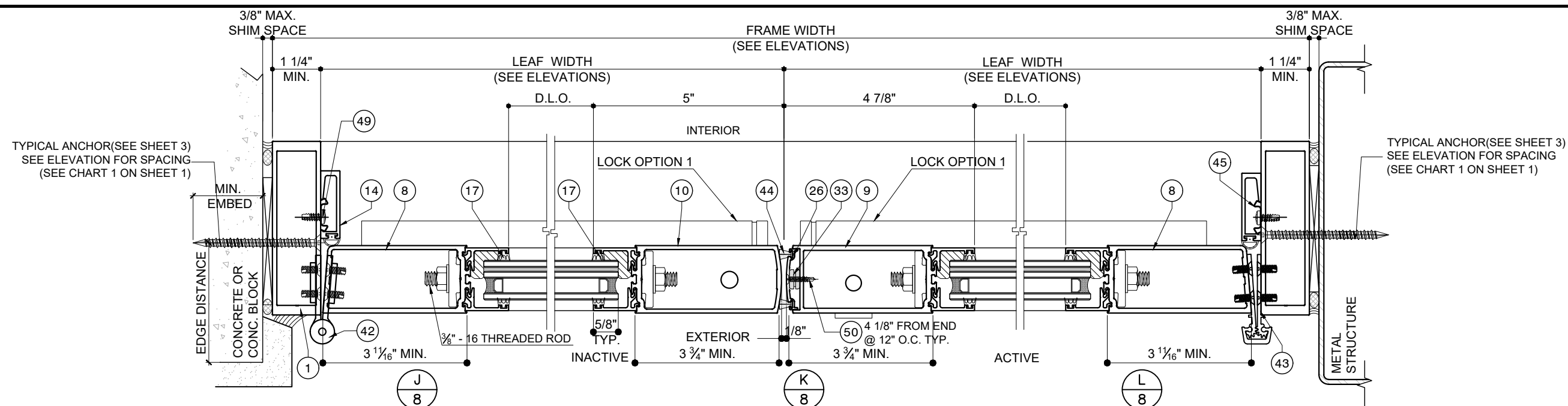
DRAWN: James

DRAWING No:

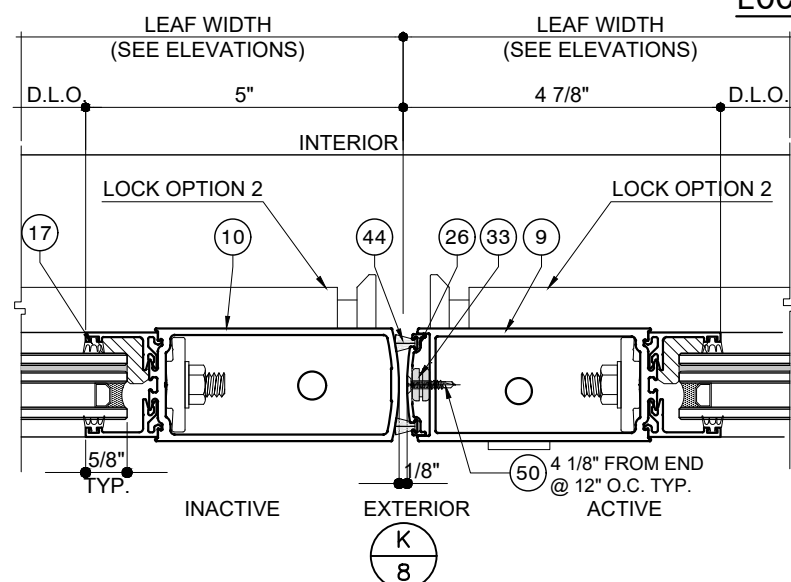
DATE: 01.28.2022

8 OF 13

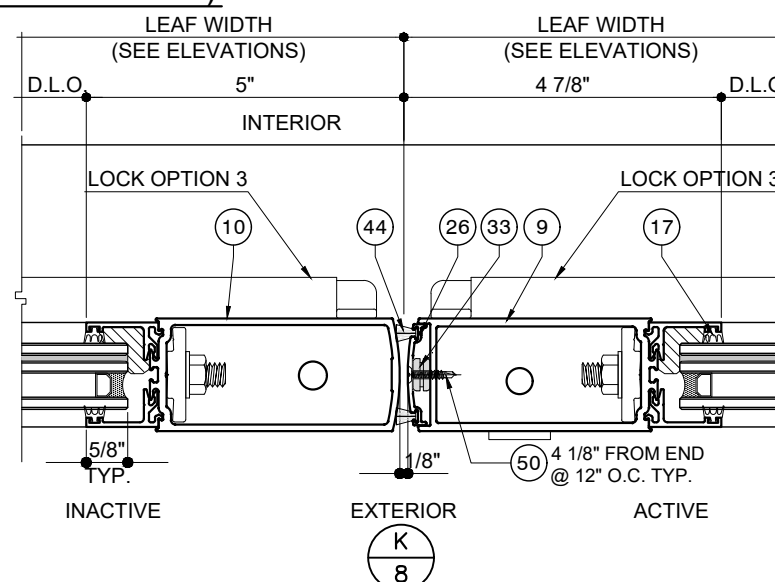
DWG: TA18-02



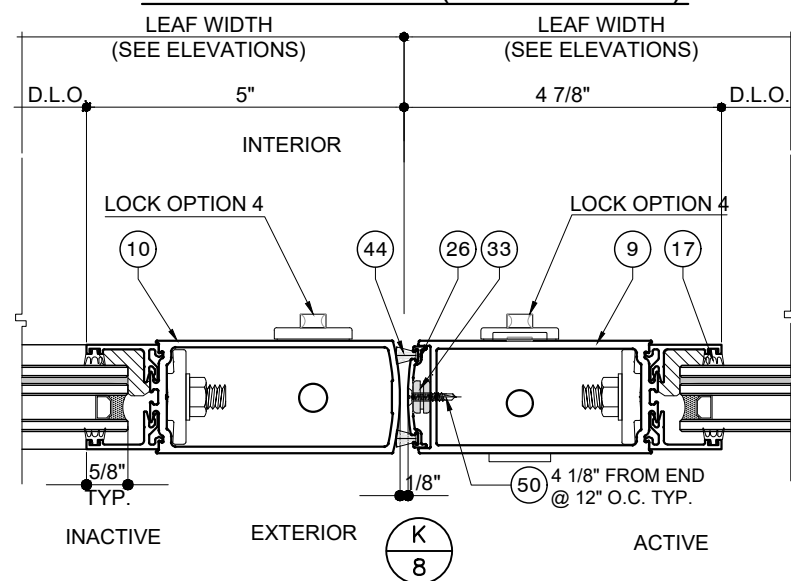
LOCK OPTION 1 (SEE SHEET 3)



LOCK OPTION 2 (SEE SHEET 3)



LOCK OPTION 3 (SEE SHEET 3)



LOCK OPTION 4 (SEE SHEET 3)

NOTE:

- 1- DOOR OR DOOR WITH TRANSOM IS QUALIFIED FOR INSTALLATION INTO APPROVED STOREFRONT(SEE SHEET 2 AND DETAIL 10).
- 2- REINFORCED STOREFRONT AND END ANCHORS REFER TO SEPARATE PRODUCT APPROVAL, TO BE REVIEWED BY BUILDING OFFICIAL.

PRODUCT:

**352 SERIES
ALUM OUTSWING
WET-GLAZED
DOORS**

W/ OR W/O TRANSOM
(LARGE MISSILE IMPACT)

REVN	DATE/REMARKS
2	01.28.2022

ENGINEER:



MCY ENGINEERING, INC.
GLAZING CONSULTANT

12781 MIRAMAR PARKWAY #301
MIRAMAR FL33027

P: 305-271-0117
Email: MCY@mcyengineering.com
www.MCYEngineering.com

STAMP:



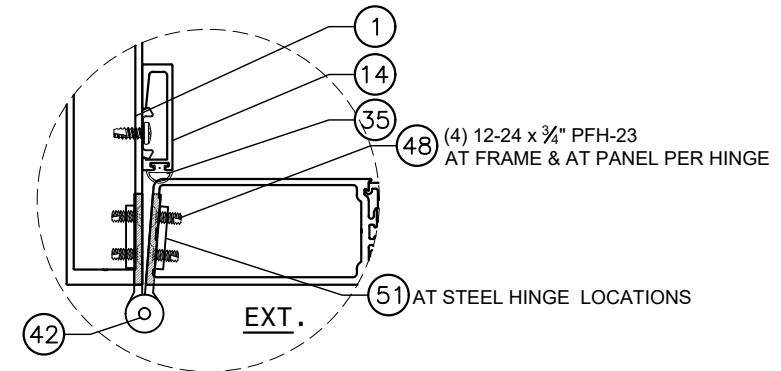
January 28th, 2022

PRODUCT CONTROL APPROVAL:

DRAWN: James
DATE: 01.28.2022
DWG: TA18-02

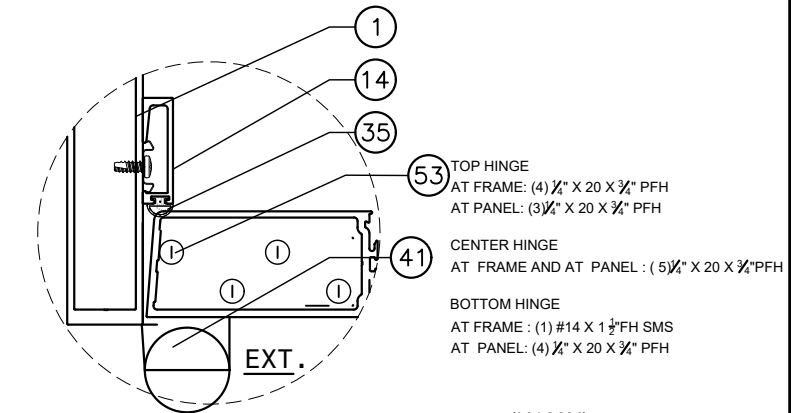
DRAWING No:
9 OF 13

NOTE: HINGES SHOWN ARE IMAGE ONLY.



H1 HINGE OPTION 1: (26298)
4-1/2" STEEL BUTT HINGE

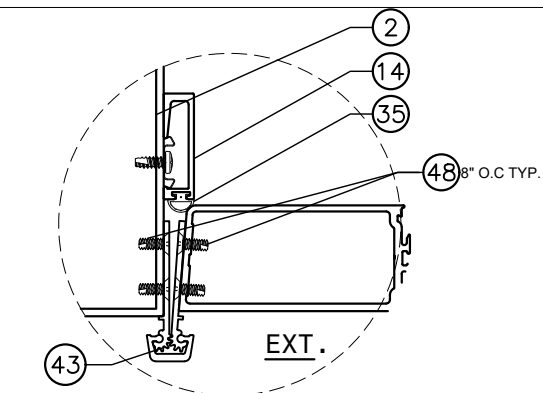
(SEE ELEVATION FOR LOCATION)



H2 HINGE OPTION 2:
OFFSET PIVOT HINGE

(SEE ELEVATION FOR LOCATION)

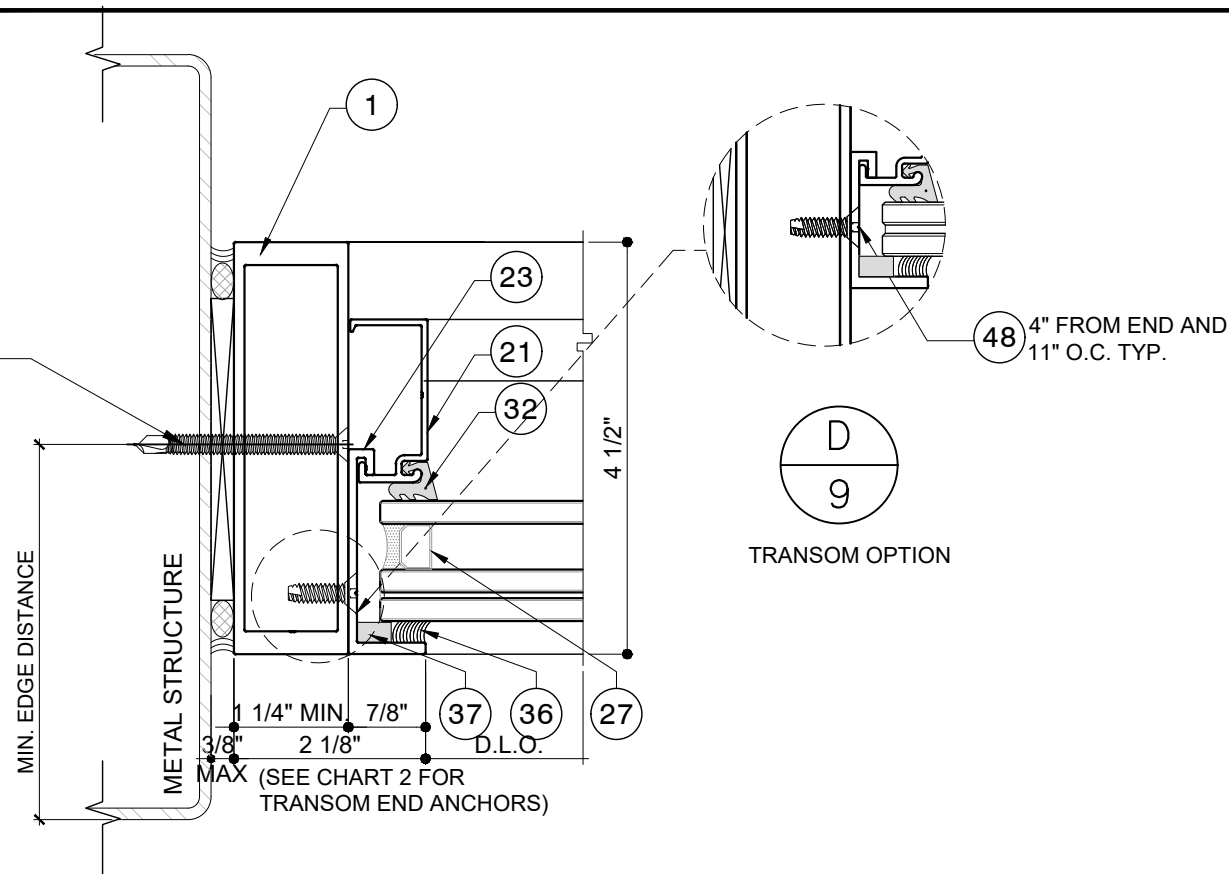
TOP (H160X)
BOTTOM (H160X)
MIDSPAN (2456x)



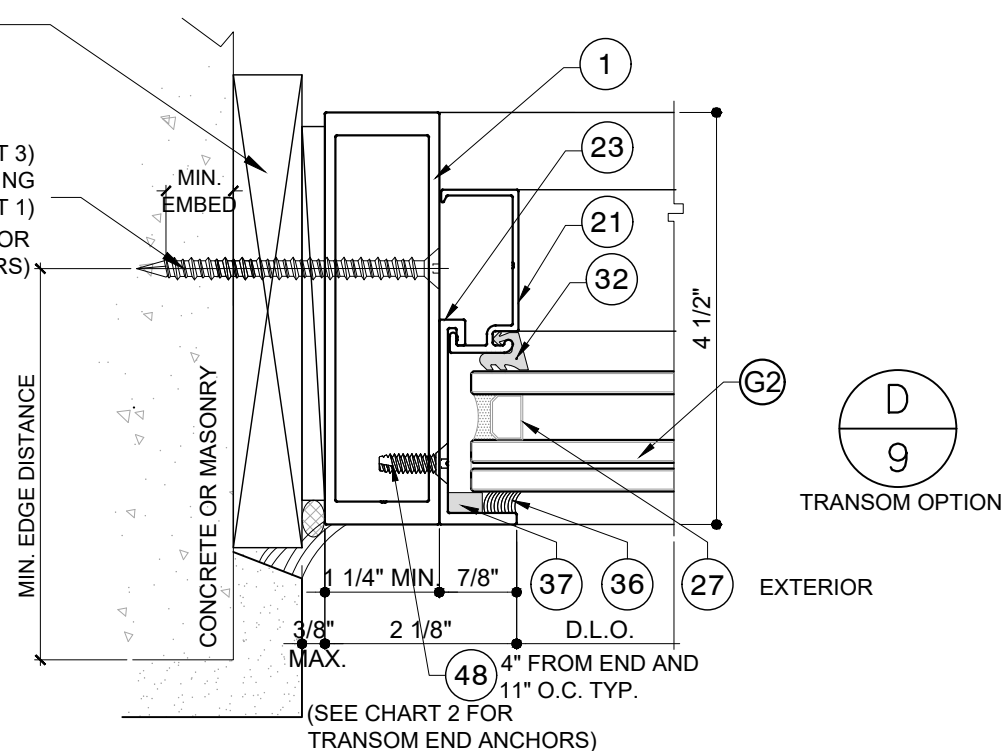
H3 HINGE OPTION 3: (6009X)
CONCEALED ALUM. CONTINUOUS
GEARED HINGE

(SEE ELEVATION FOR LOCATION)

TYPICAL ANCHOR(SEE SHEET 3)
SEE ELEVATION FOR SPACING
(SEE CHART 1 ON SHEET 1)



TYPICAL ANCHOR(SEE SHEET 3)
SEE ELEVATION FOR SPACING
(SEE CHART 1 ON SHEET 1)
(SEE CHART 2 FOR
TRANSOM END ANCHORS)



NOTE:
1- DOOR OR DOOR WITH TRANSOM IS QUALIFIED FOR INSTALLATION INTO APPROVED STOREFRONT(SEE SHEET 2 AND DETAIL E/8).
2- REINFORCED STOREFRONT AND END ANCHORS REFER TO SEPARATE PRODUCT APPROVAL, TO BE REVIEWED BY BUILDING OFFICIAL.

PRODUCT:

352 SERIES ALUM OUTSWING WET-GLAZED DOORS

W/ OR W/O TRANSOM
(LARGE MISSILE IMPACT)

REVN	DATE/REMARKS
2	01.28.2022

ENGINEER:



MCY ENGINEERING, INC.
GLAZING CONSULTANT

12781 MIRAMAR PARKWAY #301
MIRAMAR FL33027
P: 305-271-0117
Email: MCY@mcyengineering.com
www.MCYEngineering.com

STAMP:

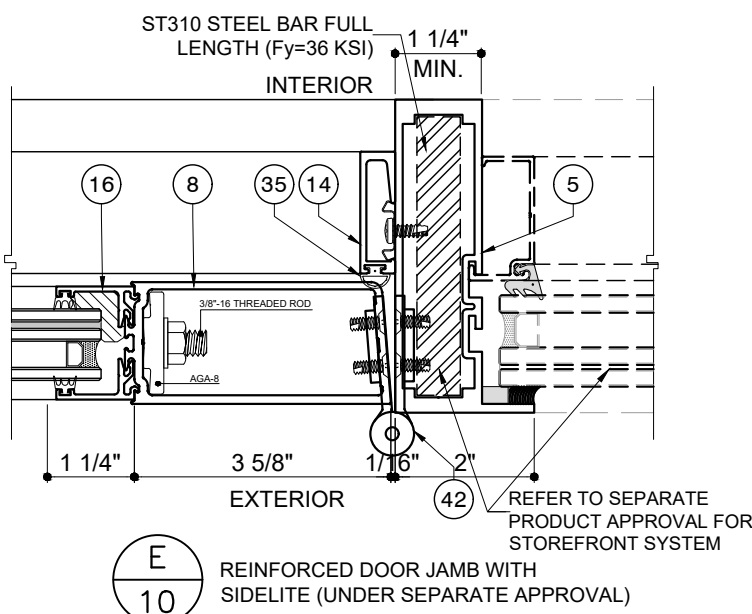
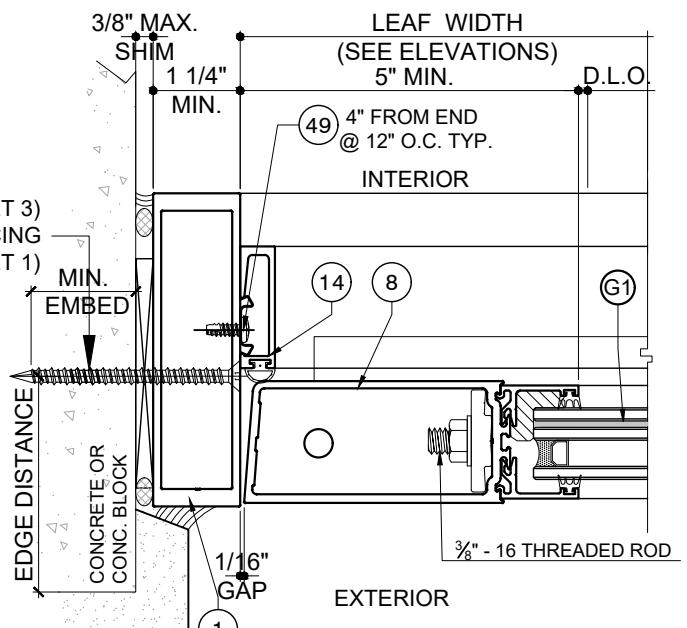
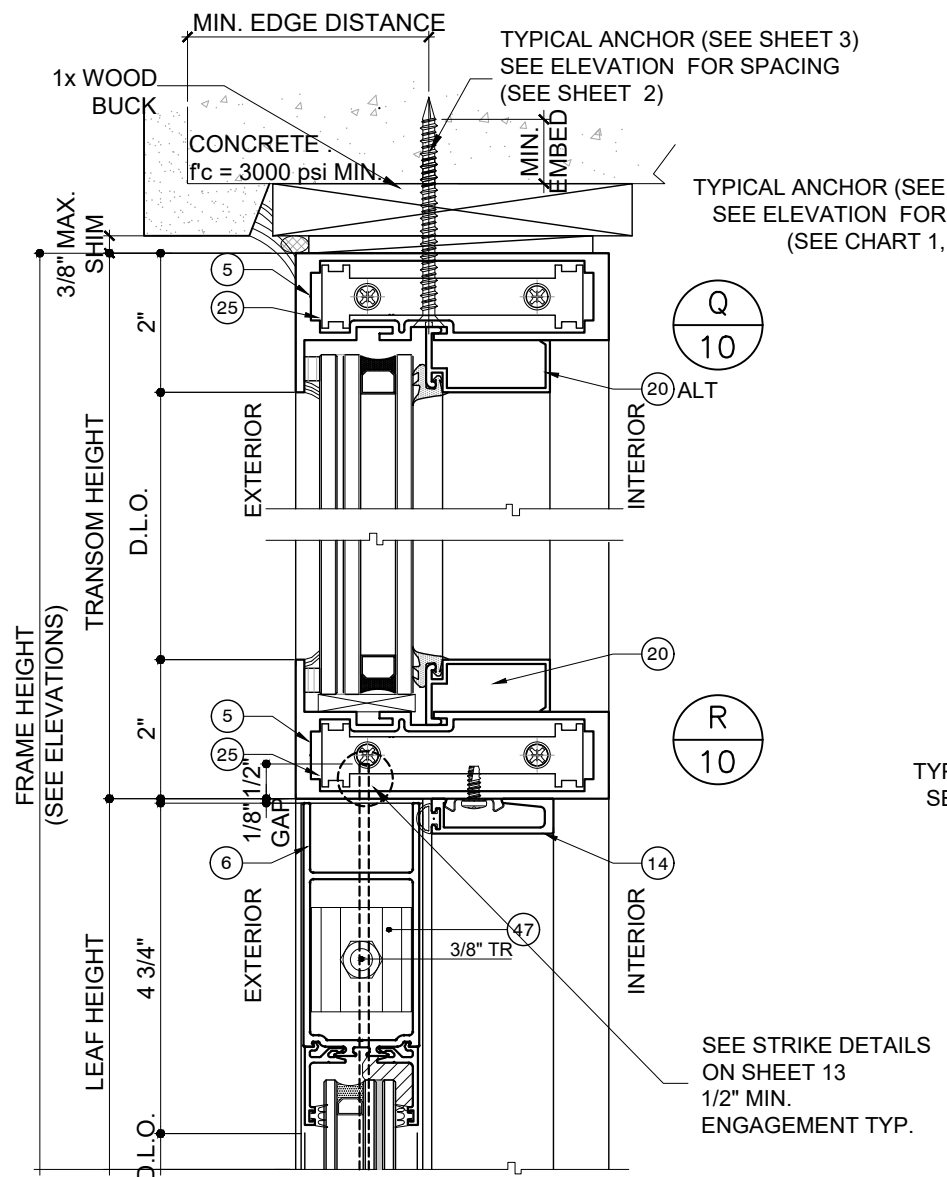


January 28th, 2022

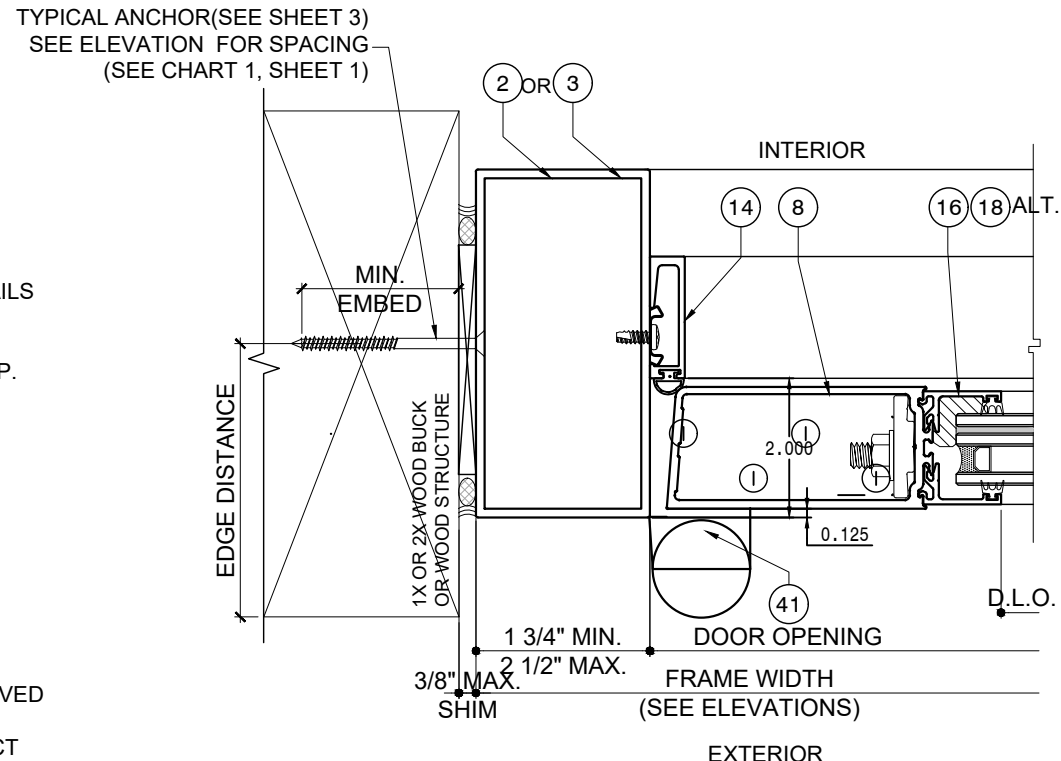
PRODUCT CONTROL APPROVAL:

DRAWN: James
DATE: 01.28.2022
DWG: TA18-02

DRAWING No:
10 OF 13



NOTE:
END LOAD, ANCHORS TO BE REVIEWED BY AUTHORITY HAVING JURISDICTION



NOTE:
1- DOOR OR DOOR WITH TRANSOM IS QUALIFIED FOR INSTALLATION INTO APPROVED STOREFRONT (SEE SHEET 2 AND DETAIL E/8).
2- REINFORCED STOREFRONT AND END ANCHORS REFER TO SEPARATE PRODUCT APPROVAL, TO BE REVIEWED BY BUILDING OFFICIAL.
3- 351 FRAME CAN BE USED FOR 352 DOOR.

PRODUCT:

352 SERIES ALUM OUTSWING WET-GLAZED DOORS

W/ OR W/O TRANSOM
(LARGE MISSILE IMPACT)

REVN	DATE/REMARKS
2	01.28.2022

ENGINEER:



MCY ENGINEERING, INC.
GLAZING CONSULTANT

12781 MIRAMAR PARKWAY #301
MIRAMAR FL33027
P: 305-271-0117
Email: MCY@mcyengineering.com
www.MCYEngineering.com

STAMP:



January 28th, 2022

PRODUCT CONTROL APPROVAL:

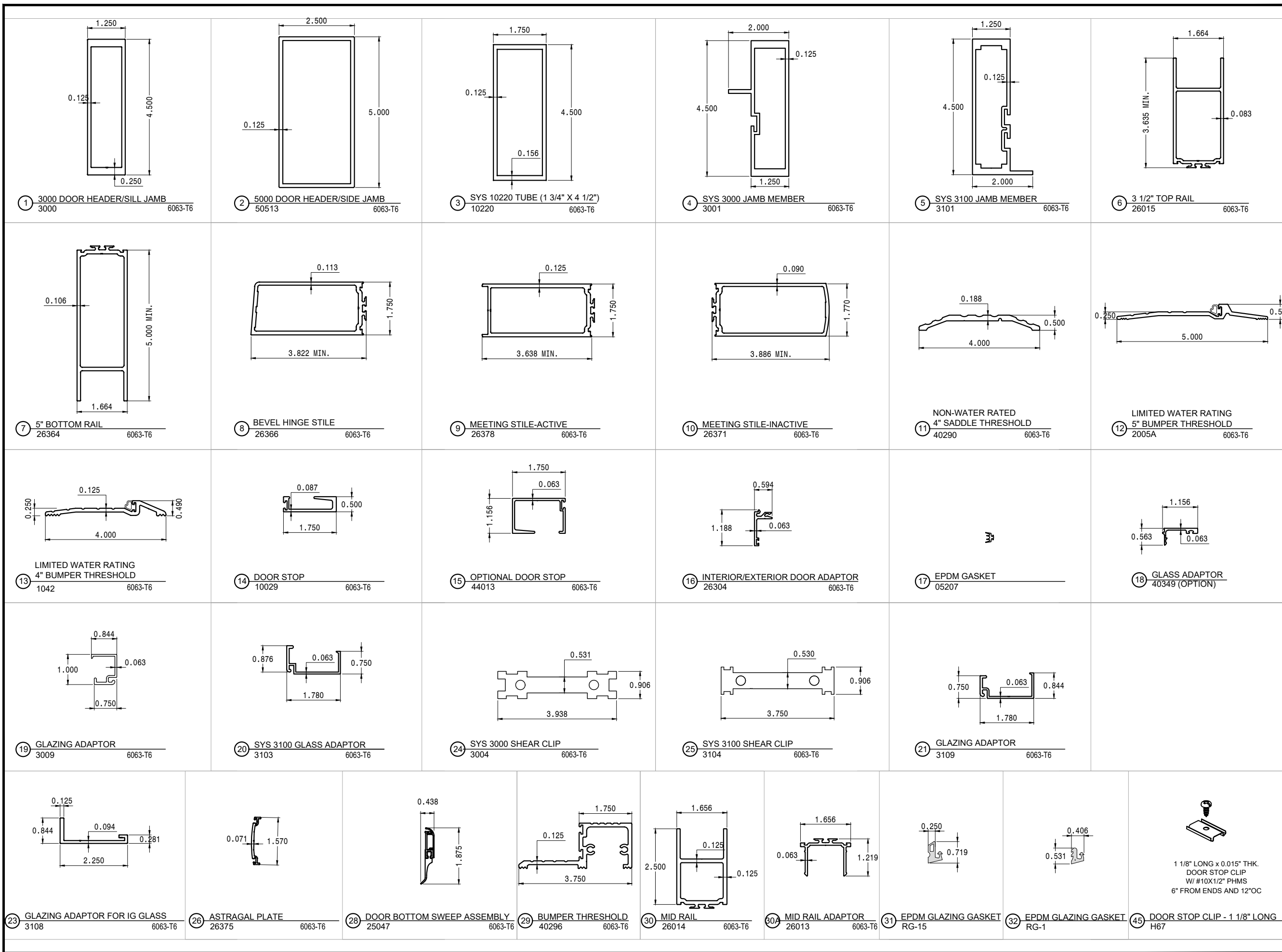
DRAWN: James

DRAWING No:

DATE: 01.28.2022

11 OF 13

DWG: TA18-02



BILL OF MATERIALS

ITEM #	PART #	DESCRIPTION	MATERIAL	SUPPLIER /MANUF.	ITEM #	PART #	DESCRIPTION	MATERIAL	SUPPLIER /MANUF.
1	3000	3000 DOOR HEADER/SILL JAMB	ALUM. 6063-T6	BONNELL	34A	H62F	1 3/8"x 1/4" SETTING BLOCK	EPDM (DUROMETER 85 +/-5 SHORE A)	TREMCO
2	50513	5000 DOOR HEADER/SIDE JAMB	ALUM. 6063-T6	BONNELL	34B	H62B	1/8"x 1"x 2" SETTING BLOCK	EPDM (DUROMETER 85 +/-5 SHORE A)	TREMCO
3	10220	SYS 10220 1-3/4" X 4 1/2" TUBE	ALUM. 6063-T6	BONNELL	35	RG5	DOOR STOP GASKET	EPDM (DUROMETER 65 SHORE A)	TREMCO
4	3001	3000 TRANSOM BAR/TRANSOM HEADER/JAMB	ALUM. 6063-T6	BONNELL	35A	RG-17	EPDM GASKET (OPTIONAL)	EPDM (DUROMETER 65 SHORE A)	TREMCO
5	3101	3100 TRANSOM BAR/TRANSOM HEADER/JAMB	ALUM. 6063-T6	BONNELL	36	DOWSIL-995	DOWSIL-995 SILICONE	SILICONE	DOW CORNING
6	26015	3 1/2" TOP RAIL	ALUM. 6063-T6	BONNELL	37	V2108	1/4"X3/8" GLAZING TAPE	FOAM	ST. GOBAIN
7	26364	5" BOTTOM RAIL	ALUM. 6063-T6	BONNELL	41	H160X (TOP) SET (BOTTOM) 2456X MIDSPAN	OFFSET PIVOT HINGE	ALUM. 6063-T6	GLOBAL DOOR
8	26366	BEVEL HINGE STILE	ALUM. 6063-T6	BONNELL				ALUM. 6063-T6	GLOBAL DOOR
9	26378	MEETING STILE-ACTIVE	ALUM. 6063-T6	BONNELL				ALUM. 6063-T6	GLOBAL DOOR
10	26371	MEETING STILE-INACTIVE	ALUM. 6063-T6	BONNELL	42	26298	4-1/2" STEEL BUTT HINGE 1/8" THK.	STEEL	HAGER COMPANIES
11	40290	4"SADDLE THRESHOLD	ALUM. 6063-T6	BONNELL	43	6009X	ALUM CONTINUOUS GEARED HINGE 0.094" THK.	ALUM. 6063-T6	HAGER COMPANIES
12	2005A	5"BUMPER THRESHOLD	ALUM. 6063-T6	PEMKO	44	24110	BRUSH PILE AT DOOR MEETING STILE	YARN	AMESBURY GROUP
13	1042	4"BUMPER THRESHOLD	ALUM. 6063-T6	BONNELL	45	23501	DOOR STOP CLIP-1 1/8" LG, 6" ON ENDS, 12" O.C.	STEEL	EVANS MANUFACTURING
14	10029	DOOR STOP	ALUM. 6063-T6	BONNELL	46	SPACER2	PVC SETTING BLOCK FOR 9/16" GLASS	PVC PLASTIC	M & M PLASTIC
15	44013	OPTIONAL DOOR STOP	ALUM. 6063-T6	BONNELL	47	2620301	BACKING PLATE	ALUM. 6063-T6	BONNELL
16	26033	INTERIOR/EXTERIOR DOOR ADAPTOR	ALUM. 6063-T6	BONNELL	48	23163	#12-24" x 3/4" PFH-23	ZINC COATED STEEL	ALLOY FASTENER
17	05207	EPDM GASKET	EPDM (DUROMETER 65 SHORE A)	BONNELL	49	23897	#10-24" x 1/4" PFH	STEEL	VARIES
18	40349	GLAZING ADAPTOR (OPTION)	ALUM. 6063-T6	BONNELL	50	23302	#6 x 3/4" UC-PFH TEK	STEEL	VARIES
19	3009	GLAZING ADAPTOR	ALUM. 6063-T6	BONNELL	51	26139	HINGE BACKING PLATE	STEEL	EVANS
20	3103	SYS 3100 GLAZING ADAPTOR	ALUM. 6063-T6	BONNELL	52	23233	1/4-20 X 1-1/2" PFH	ZINC COATED STEEL	ALLOY FASTENER
21	3109	TRANSOM GLAZING ADAPTOR	ALUM. 6063-T6	BONNELL	53	23089	#10-24" x 5/10" PFH	ZINC COATED STEEL	ALLOY FASTENER
23	3108	TRANSOM GLAZINGADAPTOR FOR 1-5/16" GLASS	ALUM. 6063-T6	BONNELL	54	23079	#10-24" x 3/14" PFH	STEEL	ALLOY FASTENER
24	3004	SYS 3000 SHEAR CLIP	ALUM. 6063-T6	BONNELL	52	-	1/4-20 X 1-1/2" PFH	ZINC COATED STEEL	ALLOY FASTENER
25	3104	SYS 3100 SHEAR CLIP	ALUM. 6063-T6	BONNELL					
26	26375	ASTRAGAL PLATE	ALUM. 6063-T6	BONNELL					
27	1122	INSULATED ALUMINUM SPACER	ALUM. 6063-T6	ALL METAL INC.					
28	25047	DOOR BOTTOM SWEEP ASSEMBLY	ALUM / RUBBER	HAGER					
29	40296	1 1/2" x 3 3/4" BUMPER THRESHOLD	ALUM. 6063-T6	BONNELL					
30	26014	MID RAIL	ALUM. 6063-T6	BONNELL					
30A	26013	MID RAIL ADAPTOR	ALUM. 6063-T6	BONNELL					
31	RG15	EPDM GLAZING GASKET	EPDM (DUROMETER 70 SHORE A)	TREMCO					
32	RG1	EPDM GLAZING GASKET	EPDM (DUROMETER 70 SHORE A)	TREMCO					
33	23301	RUBBER GROMMET AT ASTRAGAL	NITRILE	RUBBER GROMMET					
34	H62D	1/2"x 1/4" SETTING BLOCK	EPDM (DUROMETER 85 +/-5 SHORE A)	TREMCO					



http://www.trulite.com

403 WESTPARK CT. SUITE 201
PEACHTREE CITY, GA 30269
p. 800-432-8132 | f. 954-724-2083

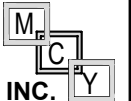
PRODUCT:

**352 SERIES
ALUM OUTSWING
WET-GLAZED
DOORS**

W/ OR W/O TRANSOM
(LARGE MISSILE IMPACT)

REV#	DATE/REMARKS
2	01.28.2022

ENGINEER:



MCY ENGINEERING, INC.
GLAZING CONSULTANT

12781 MIRAMAR PARKWAY #301
MIRAMAR FL33027
P: 305-271-0117
Email: MCY@mcyengineering.com
www.MCYEngineering.com

STAMP:



PRODUCT CONTROL APPROVAL:

DRAWN: James
DATE: 01.28.2022
DWG: TA18-02

DRAWING No:
12 OF 13

PRODUCT:

352 SERIES ALUM OUTSWING WET-GLAZED DOORS

W/ OR W/O TRANSOM
(LARGE MISSILE IMPACT)

REVN	DATE/REMARKS
2	01.28.2022

ENGINEER:



MCY ENGINEERING, INC.
GLAZING CONSULTANT

12781 MIRAMAR PARKWAY #301
MIRAMAR FL33027

P: 305-271-0117

Email: MCY@mcyengineering.com
www.MCYEngineering.com

STAMP:



January 28th, 2022

PRODUCT CONTROL APPROVAL:

DRAWN: James

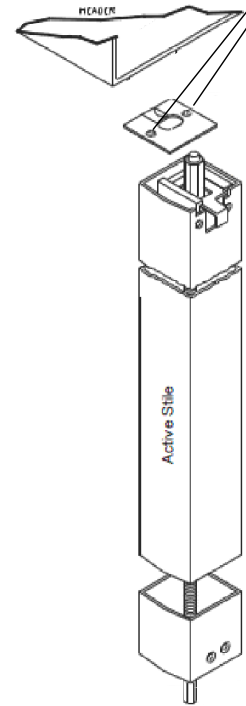
DRAWING No:

DATE: 01.28.2022

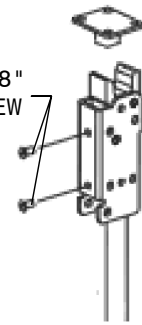
13 OF 13

DWG: TA18-02

(2) #6-3/4" FH SDS SCREWS
AT EACH DOOR PANEL HEADER ONLY

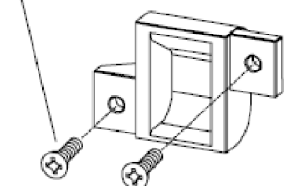


(2) #10-24 BY 3/8"
MOUNTING SCREW



STRIKES (FALCON DOOR-O-MATIC)
LOCK OPTION 2

Screw Pkg 900285

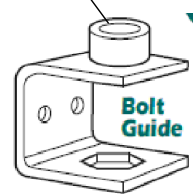


338 Strike (Top) Standard
Panic or Fire Exit Hardware

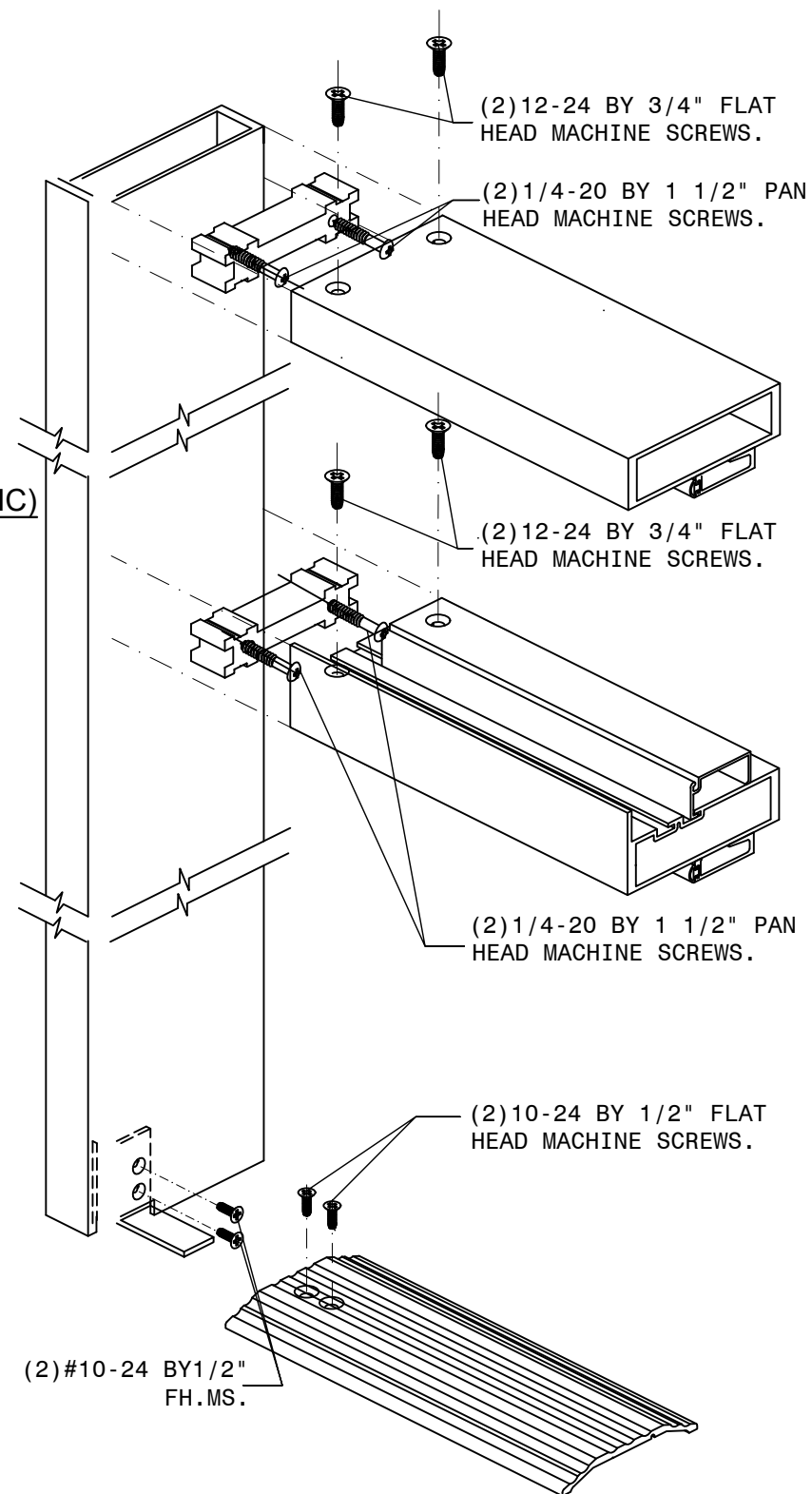
STRIKES (VONDUPRIN 9947)
LOCK OPTION 3

STRIKES (AHT 8000)
LOCK OPTION 1

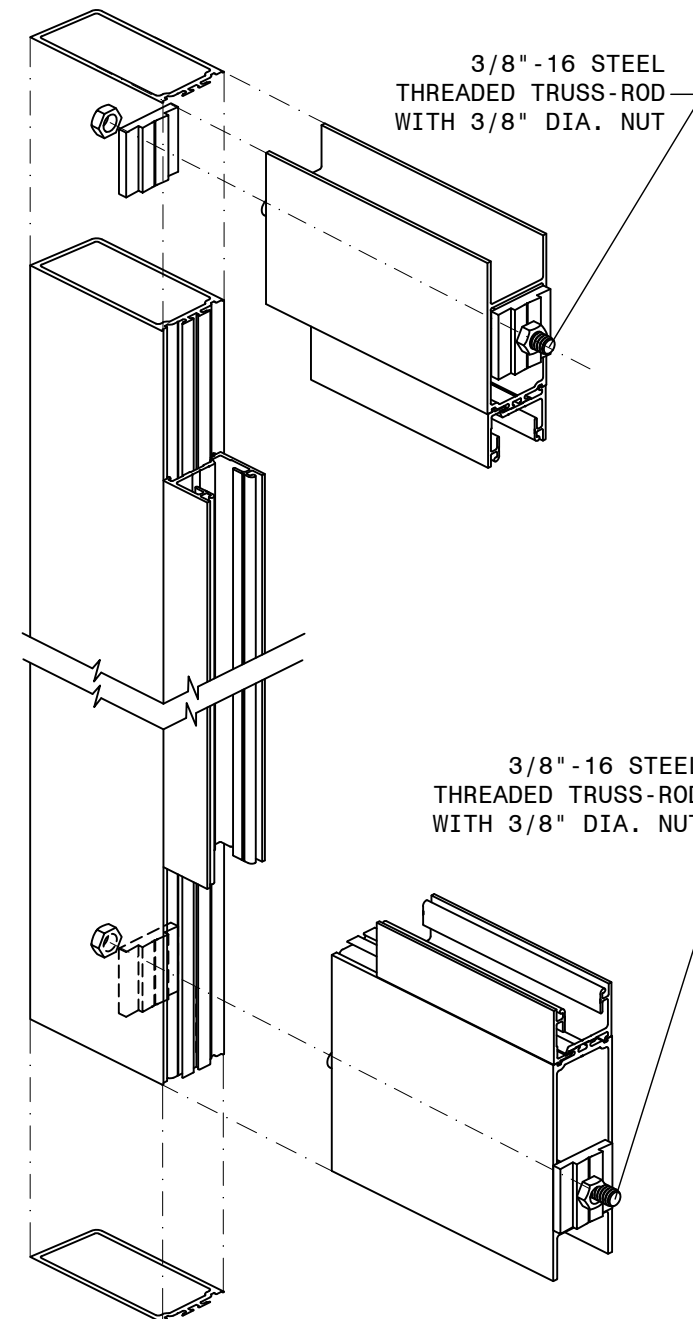
11/16" THROW



LOCK GUIDE



FRAME CORNER CONNECTION



DOOR PANEL CORNER CONNECTION